

**Company:** Lamont-Doherty Borehole Research

**Well:** IODP Expedition 311 CAS-02C

**Field:** Cascadia Margin

**Rig:** JOIDES Resolution State

**Pacific Ocean**

**Rig:** JOIDES Resolution  
**Field:** Cascadia Margin  
**Location:** Vancouver Island  
**Well:** IODP Expedition 311 CAS-02C  
**Company:** Lamont-Doherty Borehole Research

## VISION Density Neutron - Image 1:240 Measured Depth Recorded Mode Log

Location		Total depth:	K.B.
Total depth:	2562 m	2562 m	10.06 m
Spud date:	20-Sep-2005	G.L.	-2202 m
Runs:	1 To 1	D.F.	9.60 m
Permanent datum:	MEAN SEA LEVEL	Elev.:	0 m
Log measured from:	Kelly Bushing	10.06 m above Perm. datum	
Depth reference:	Driller's Depth		

Service Order no.	NAD 27	Longitude	Latitude
40012416	UTM Zone 10 N	W 126.98322	N 48.64480

**Depth logged:** 2212 m To 2561 m **Mag decl:** 18.83 deg. **Other services:**  
**Date logged:** 20-Sep-05 To 21-Sep-05 **Mag dip:** 69.17 deg. **EcoScope, sonicVISION, proVISION**

### Bore hole record

Hole size	from	to	Size	Density	from	to
9.875 in.	2212 m	2562 m				

### Mud record

Type	from	to	Min	Max
Seawater	2212 m	2562 m		

### Surface equipment

Unit	TWIS	IDEAL Wis	ID10_2C_01
Depth system	Geograph	SPM	hspm10_1c_05
		LWD	See Remarks
		MWD	9.0_C03

### Software record

# PEF / Density Static Image

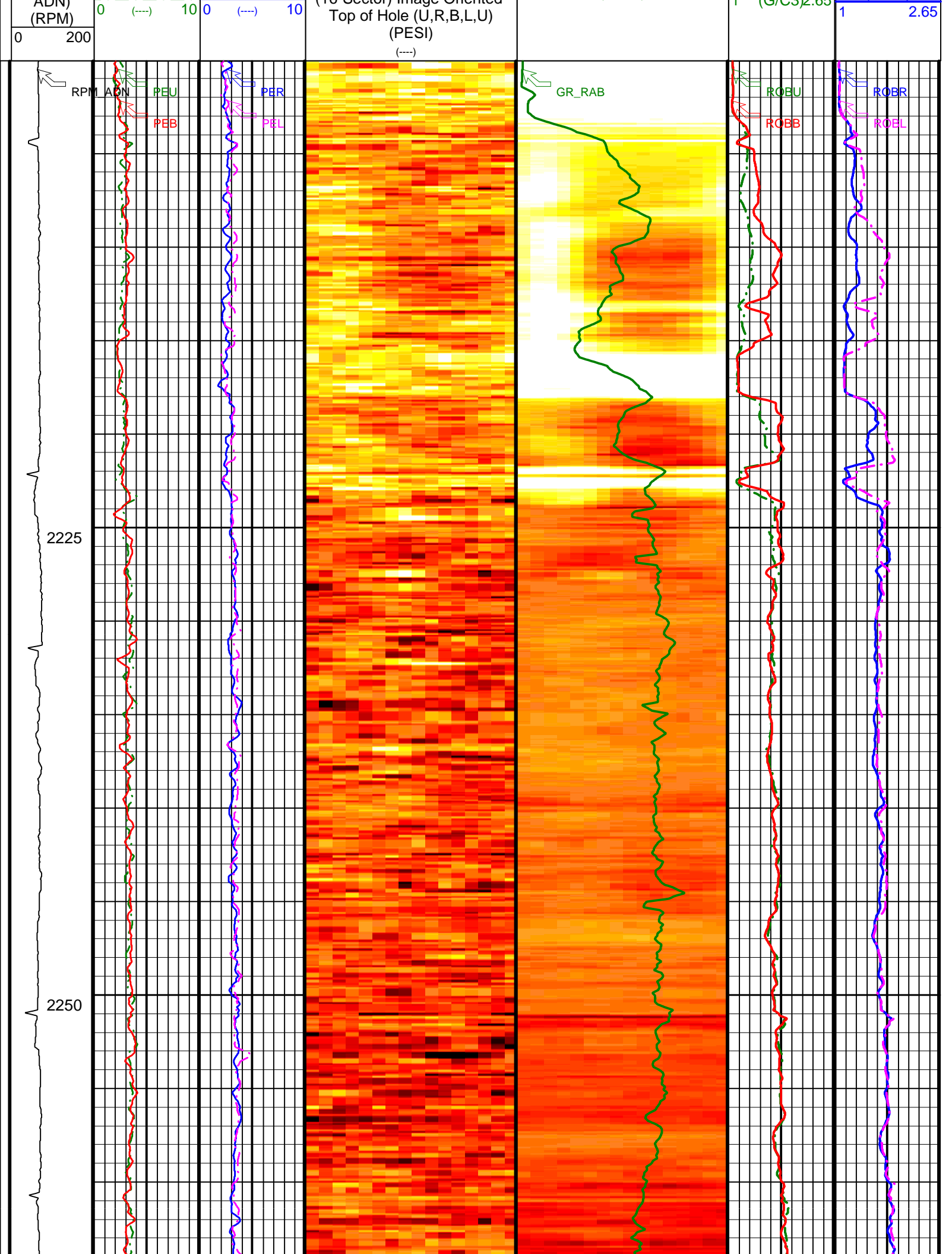
IDEAL Version: ID10\_2B\_08  
 IDF

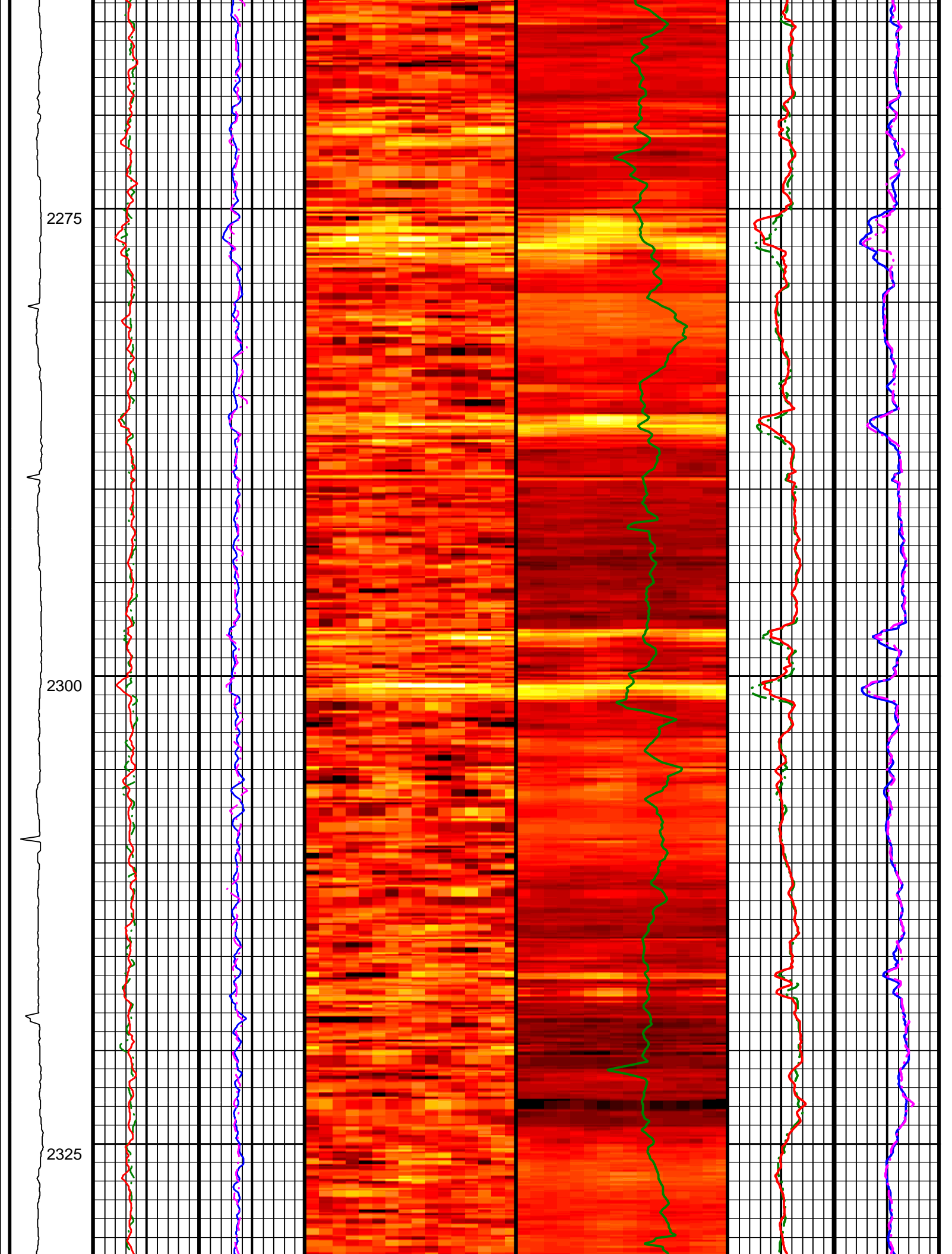
ADN id10\_2c\_01 Graphics File Created: 04-Oct-2005 13:18

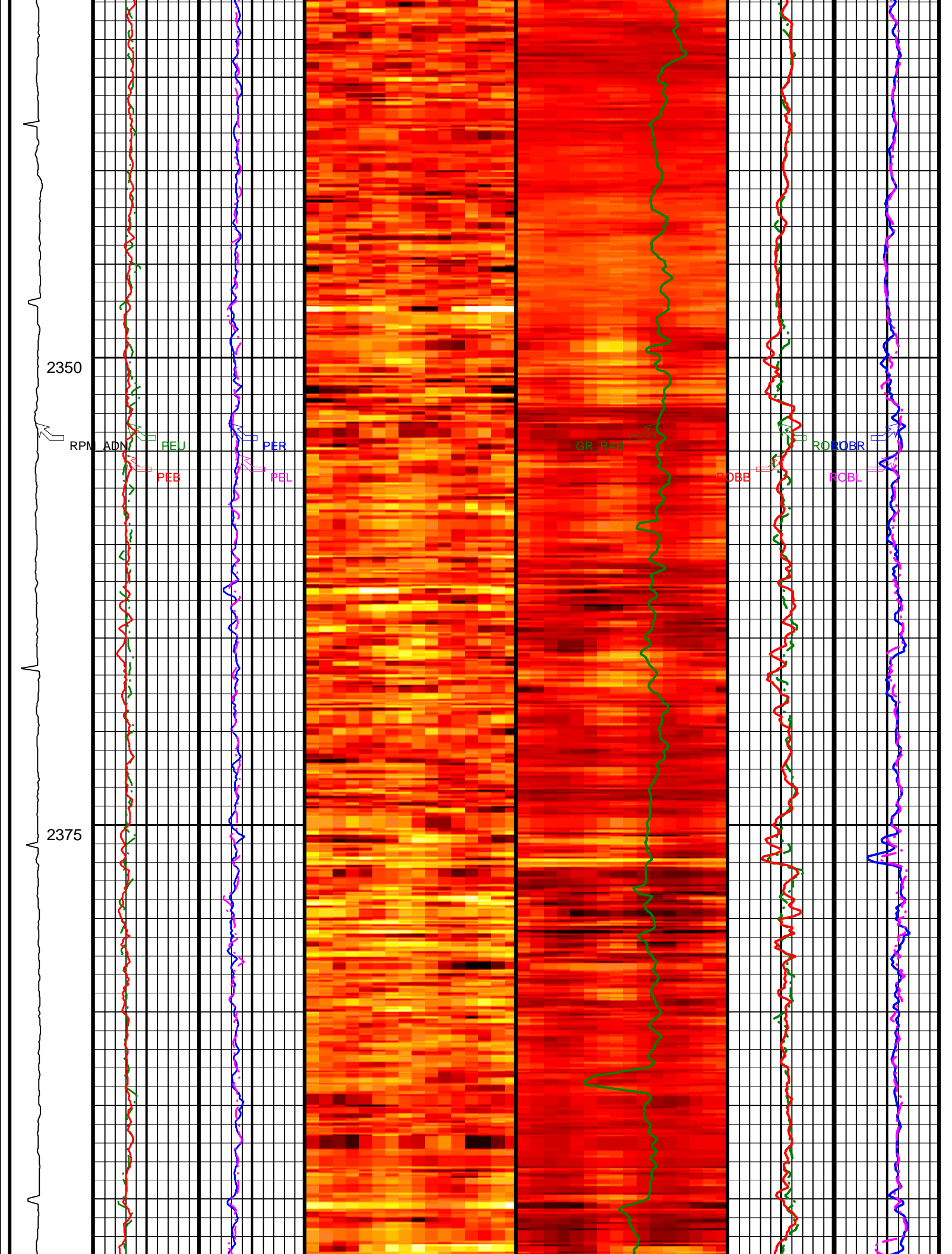
Format: V\_DEN\_NEU\_IMAGE Vertical Scale: 1:240

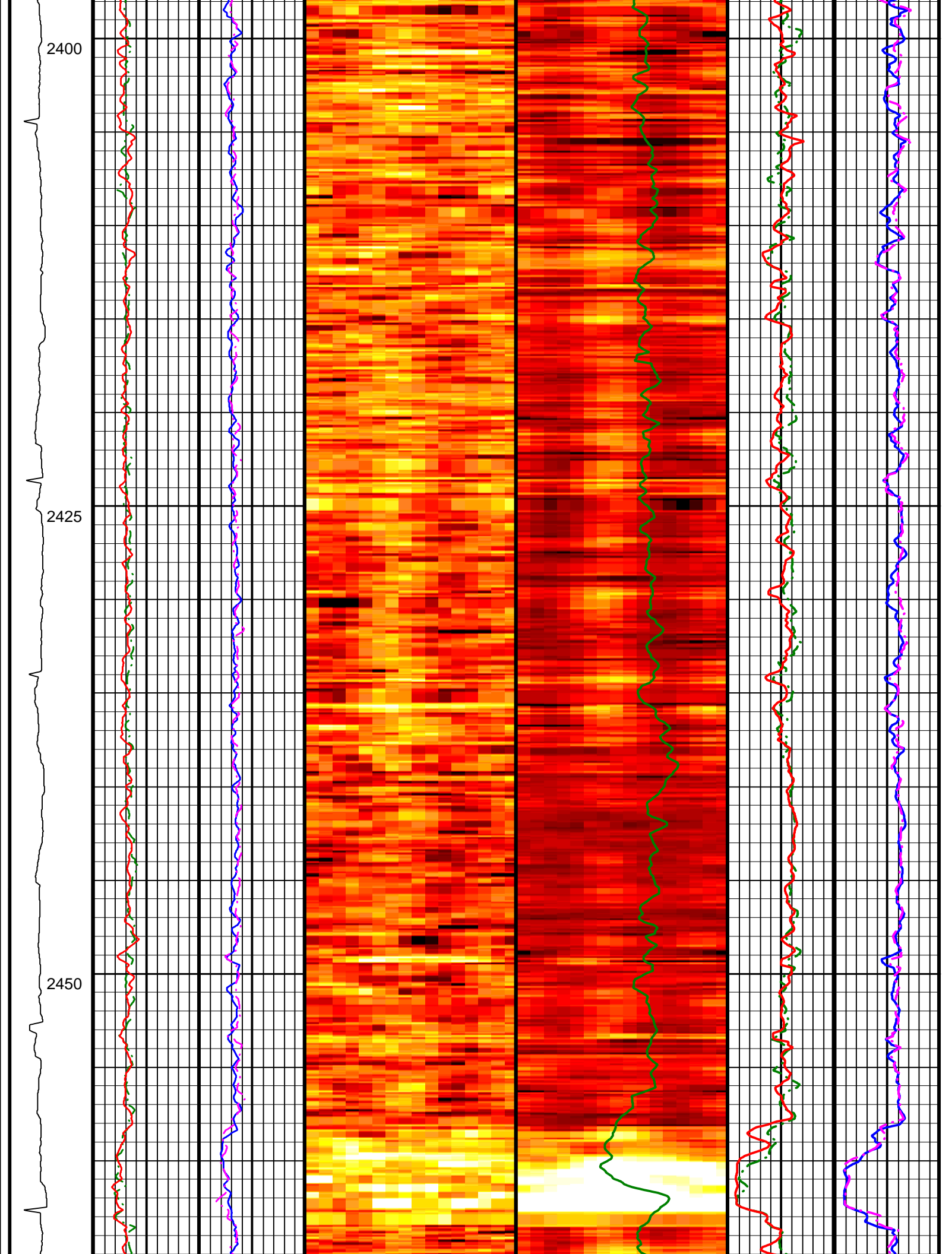
	<b>Photoelectric Factor, Bottom (PEB)</b> 0 (----) 10	<b>Photoelectric Factor, Left (PEL)</b> 0 (----) 10		<b>ADN Bulk Density (16-Sector) Image Oriented Top of Hole (U,R,B,L,U) (ROSI) (G/C3)</b> 1 (G/C3) 2.65	<b>Bulk Density, Left (ROBL) (G/C3)</b> 1 2.65
--	--	--	--	---	---

<b>ADN Rotational Speed (RPM) (ADN)</b>	<b>Photoelectric Factor, Up (PEU)</b> 0 (----) 10	<b>Photoelectric Factor, Right (PER)</b> 0 (----) 10	<b>ADN Photoelectric Factor (16-Sector) Image Oriented</b> 0 (GAPI) 150	<b>RAB Gamma Ray (GR_RAB) (GAPI)</b> 0 150	<b>Bulk Density, Up (ROBU) (G/C3)</b> 1 (G/C3) 2.65	<b>Bulk Density, Right (ROBR) (G/C3)</b> 1 (G/C3) 2.65
---	--	---	--	---	--	---









2475

2500

2525

RPM ADN

PEU

PEB

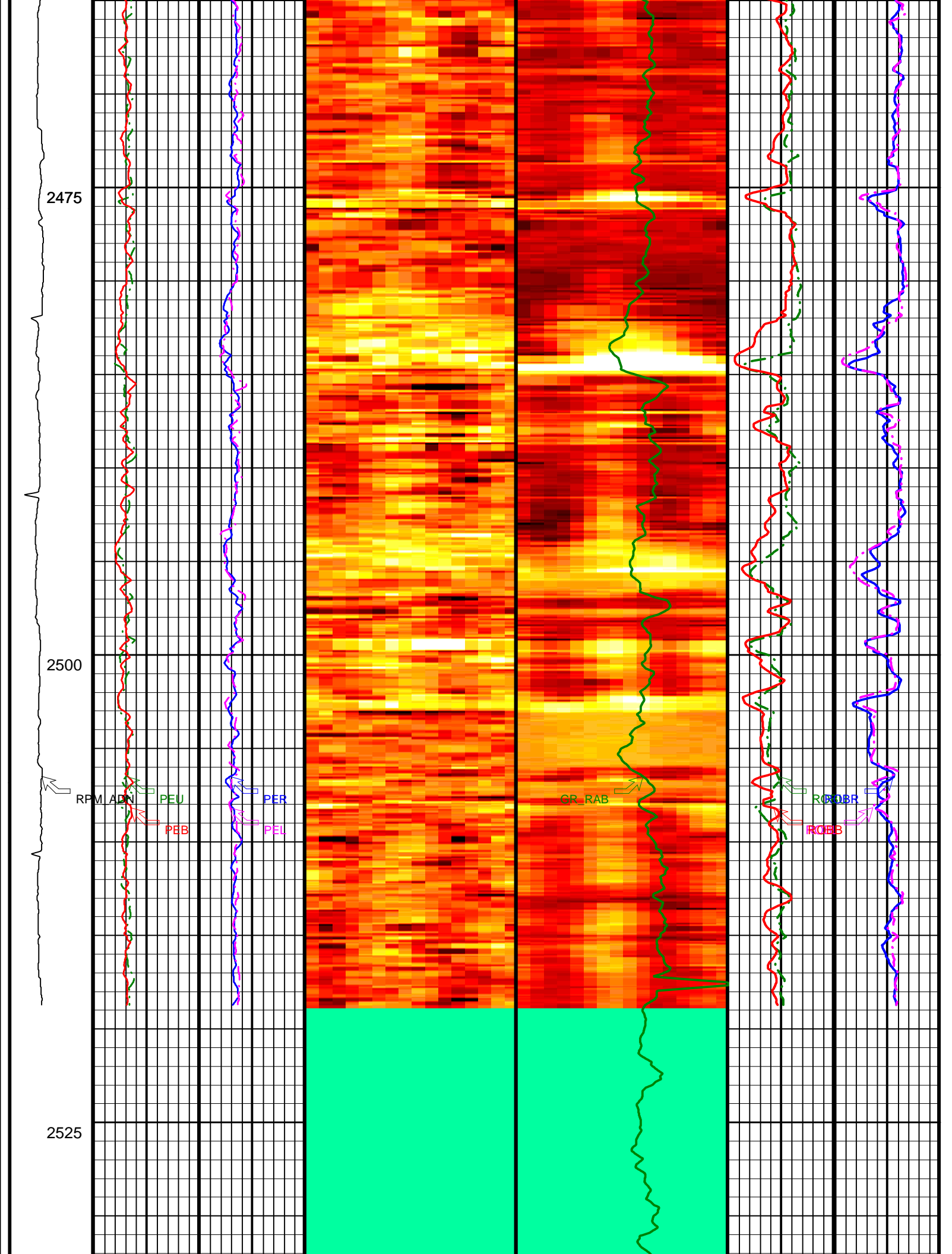
PER

PEL

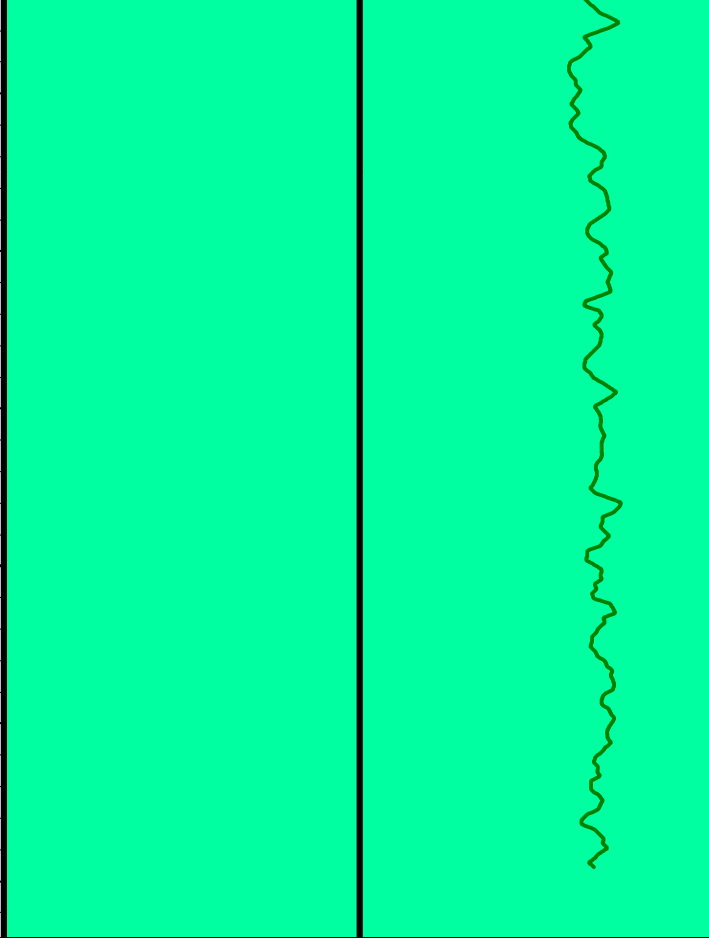
GR\_RAB

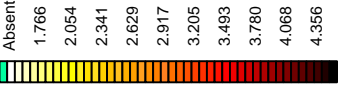

ROBR

ROBB



2550



ADN Rotational Speed (RPM_ ADN) (RPM) 0 200	Photoelectric Factor, Up (PEU) 0 (----) 10	Photoelectric Factor, Right (PER) 0 (----) 10	 ADN Photoelectric Factor (16-Sector) Image Oriented Top of Hole (U,R,B,L,U) (PESI) (----)	RAB Gamma Ray (GR_RAB) (GAPI) 0 150	Bulk Density, Up (ROBU) (G/C3) 2.65 1 2.65	Bulk Density, Right (ROBR) (G/C3) 1 2.65
	Photoelectric Factor, Bottom (PEB) 0 (----) 10	Photoelectric Factor, Left (PEL) 0 (----) 10	 ADN Bulk Density (16-Sector) Image Oriented Top of Hole (U,R,B,L,U) (ROSI) (G/C3)		Bulk Density, Bottom (ROBB) (G/C3) 2.65 1 2.65	Bulk Density, Left (ROBL) (G/C3) 2.65 1 2.65

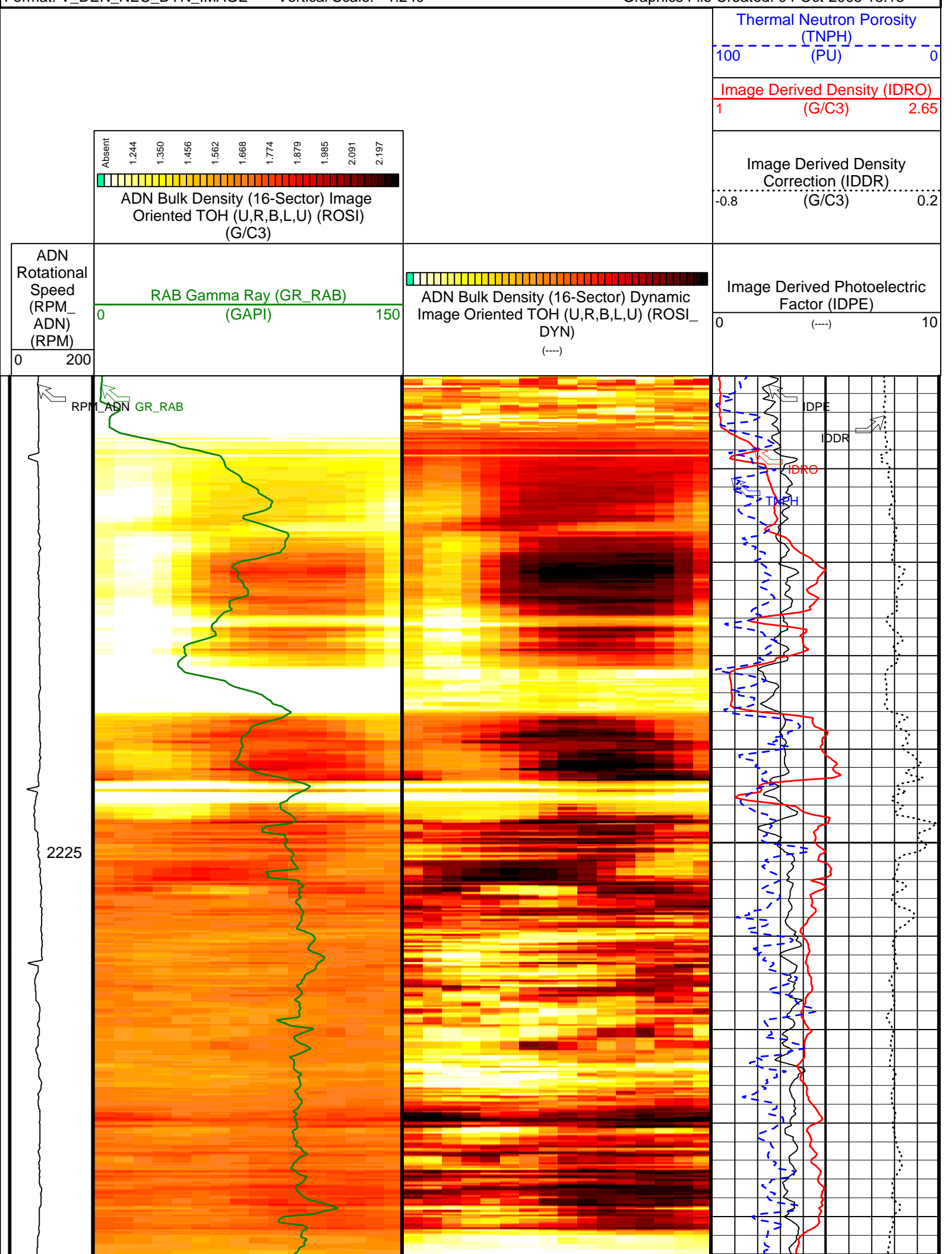
IDEAL Version: ID10\_2B\_08  
IDF

ADN id10\_2c\_01

# Density Dynamic Image

IDEAL Version: ID10\_2B\_08  
IDF

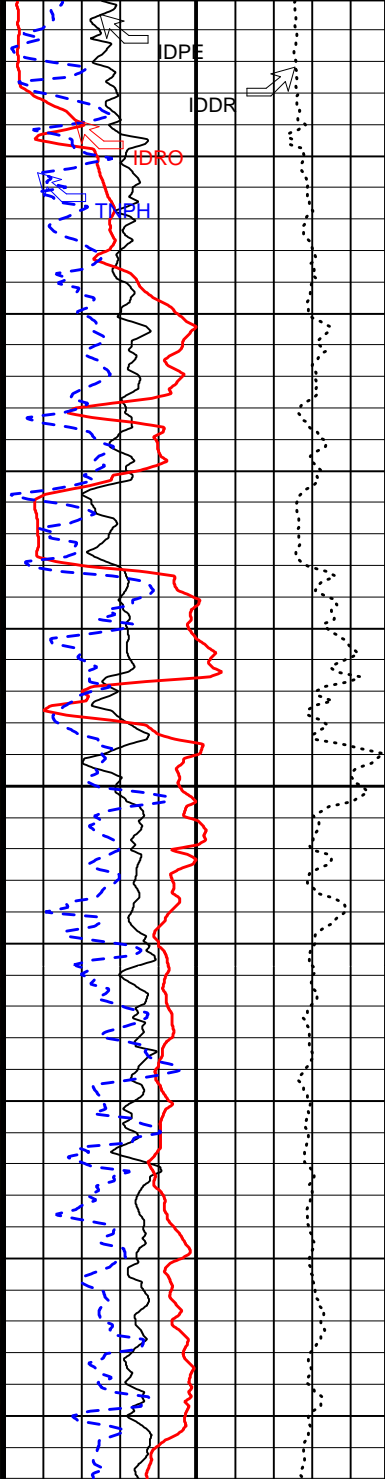
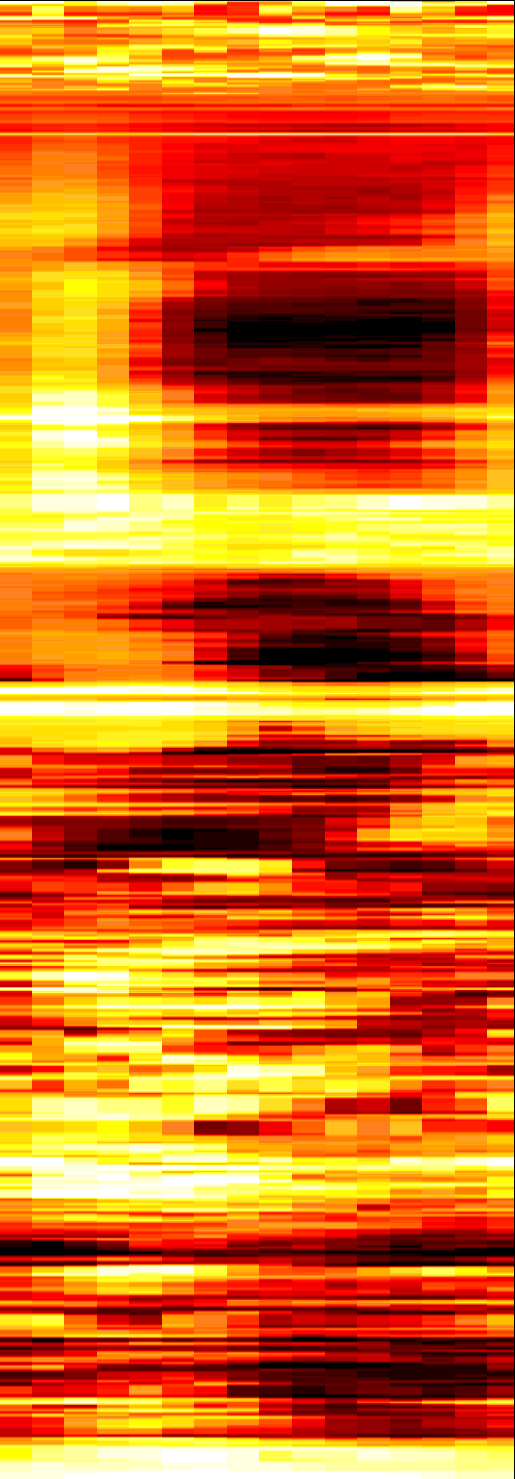
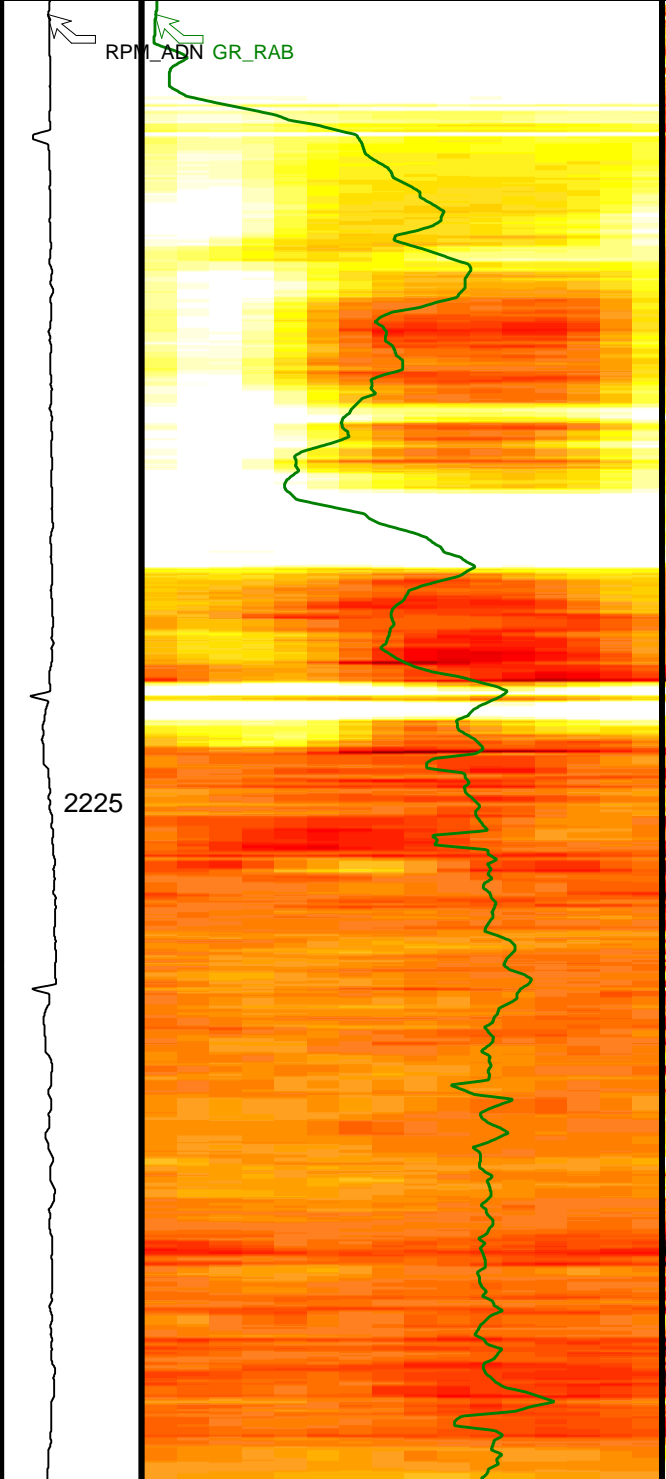
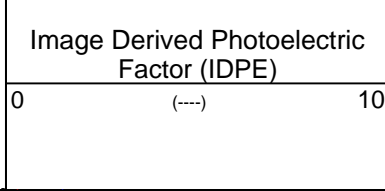
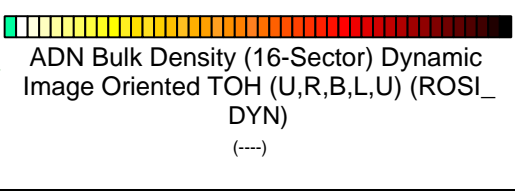
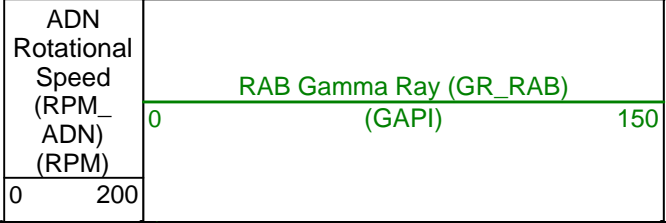
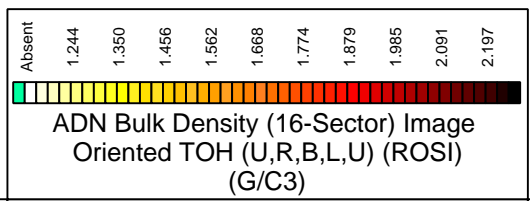
ADN id10\_2c\_01



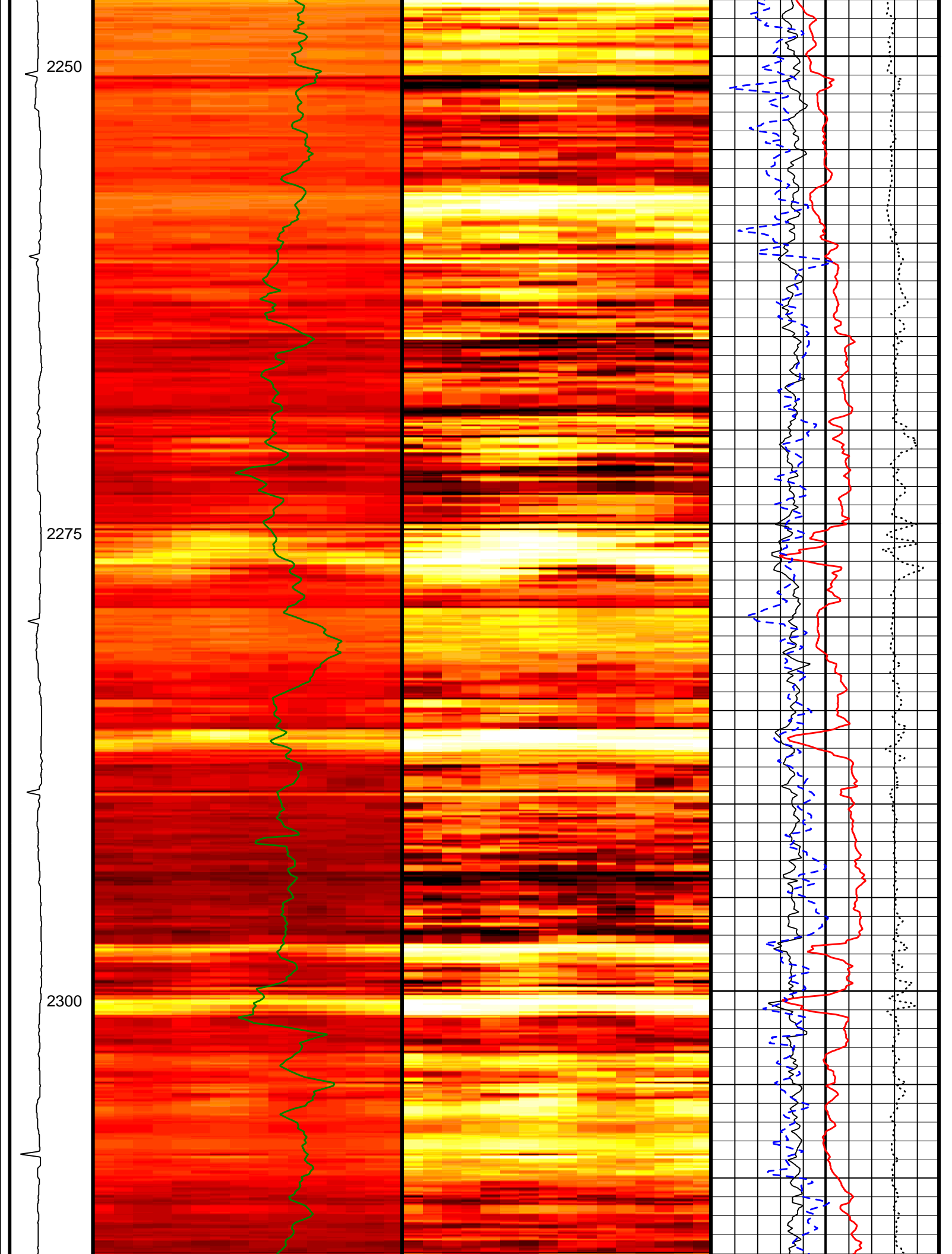
Thermal Neutron Porosity (TNPH) (PU) 100 0

Image Derived Density (IDRO) 1 (G/C3) 2.65

Image Derived Density Correction (IDDR) -0.8 (G/C3) 0.2







2325

2350

2375

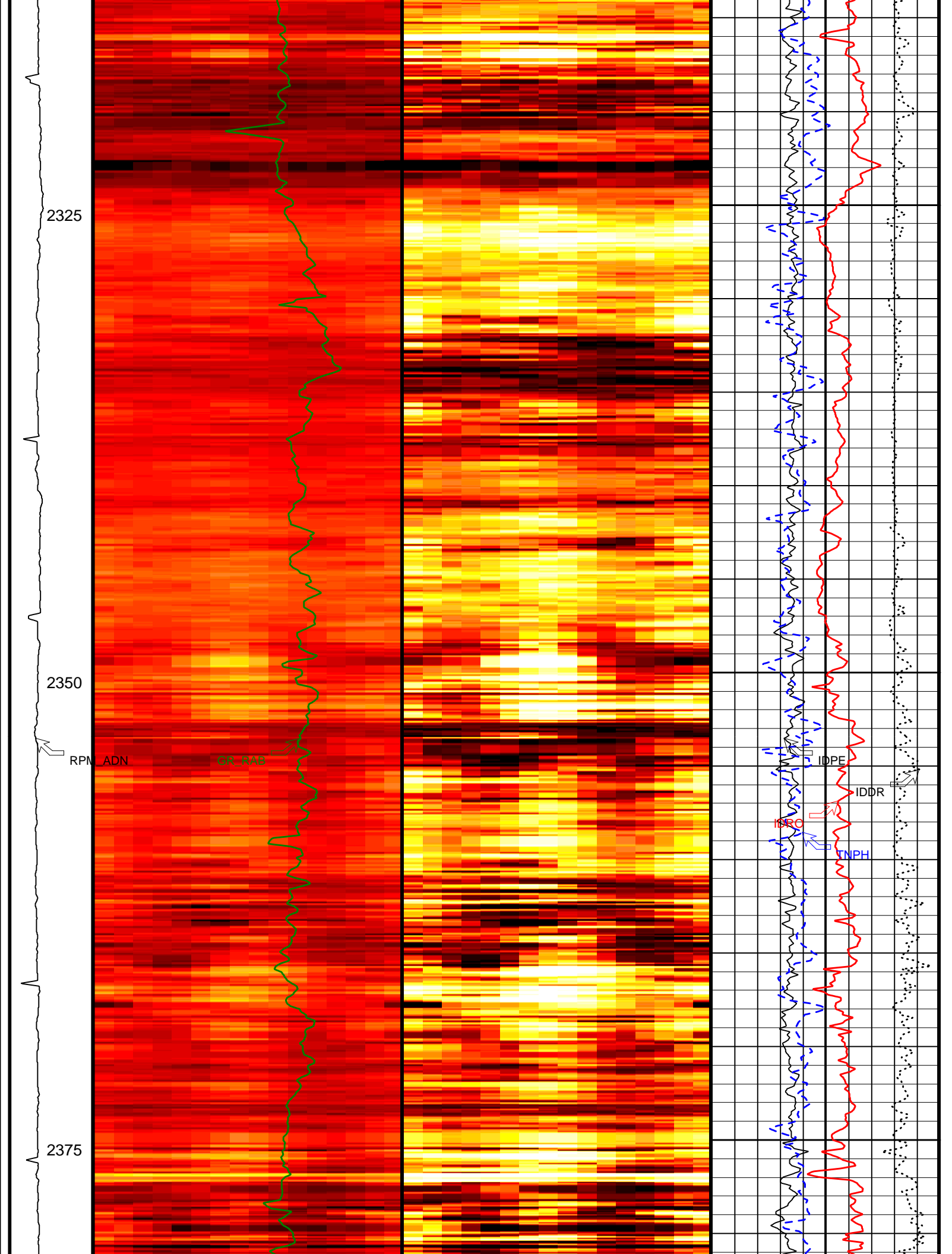
RPM\_ADN

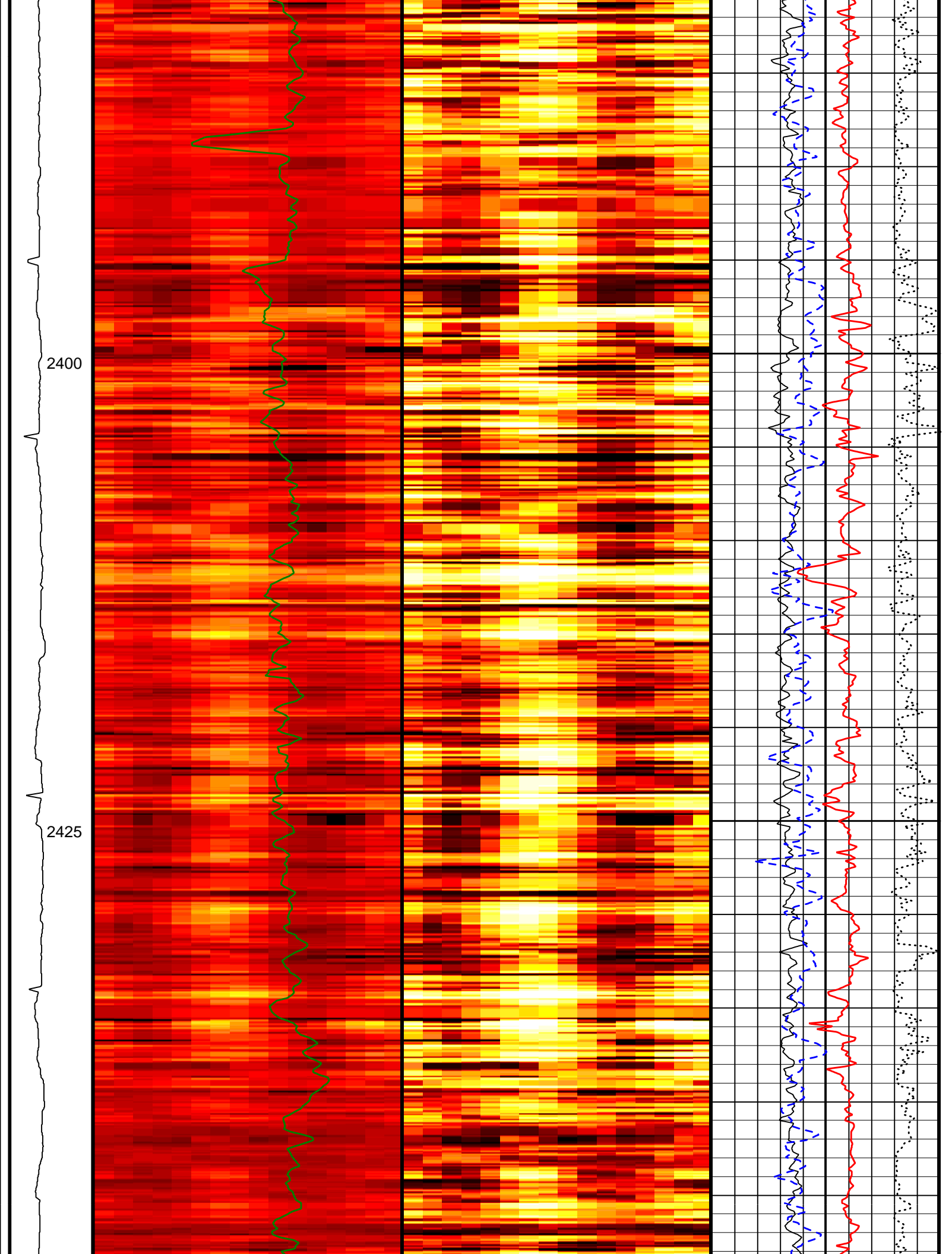
GR\_RAB

IDPE

IDDR

TNPH





2450

2475

2500

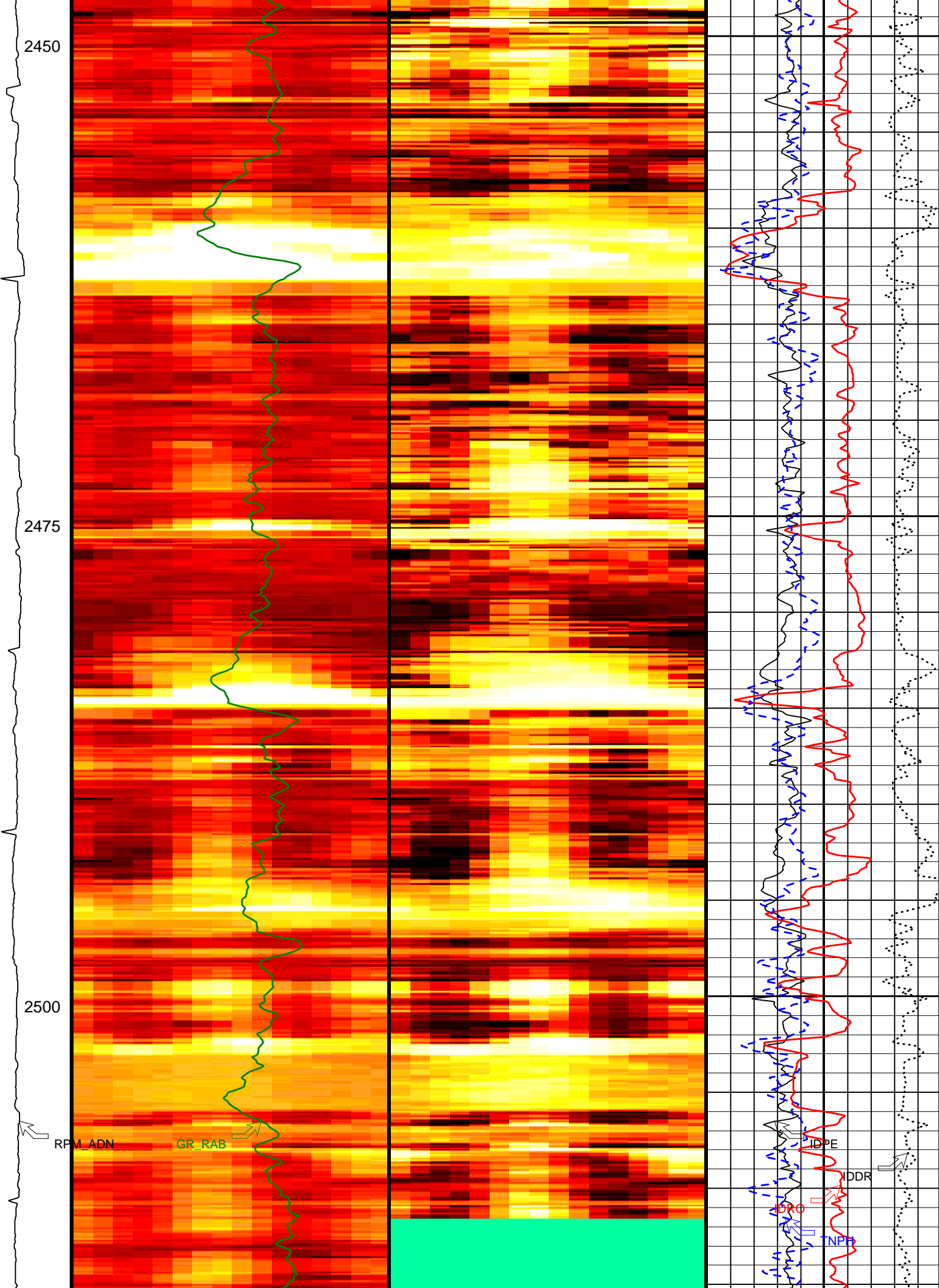
RPM\_ADN

GR\_RAB

IDPE

DDR

INP



2525

2550



<p>ADN Rotational Speed (RPM_ADN) (RPM)</p> <p>0 200</p>	<p>RAB Gamma Ray (GR_RAB) (GAPI)</p> <p>0 150</p>	<p>ADN Bulk Density (16-Sector) Dynamic Image Oriented TOH (U,R,B,L,U) (ROSI_DYN) (---)</p>	<p>Image Derived Photoelectric Factor (IDPE)</p> <p>0 (---) 10</p>
	<p>ADN Bulk Density (16-Sector) Image Oriented TOH (U,R,B,L,U) (ROSI) (G/C3)</p>		<p>Image Derived Density Correction (IDDR) (G/C3)</p> <p>-0.8 (---) 0.2</p>
			<p>Image Derived Density (IDRO) (G/C3)</p> <p>1 (---) 2.65</p> <p>Thermal Neutron Porosity (TNPH) (PU)</p> <p>100 (---) 0</p>

ADN

id10\_2c\_01

Company: Lamont-Doherty Borehole Research

**Schlumberger**

Well: IODP Expedition 311 CAS-02C

Field: Cascadia Margin

Rig: JOIDES Resolution

State: Pacific Ocean

VISION Density Neutron - Image  
1:240 Measured Depth  
Recorded Mode Log