

Company: Lamont-Doherty Borehole Research

Well: IODP Expedition 311 CAS-02C

Field: Cascadia Margin

Rig: JOIDES Resolution State: Pacific Ocean

## GeoVISION Resistivity 1:1200 Measured Depth Recorded Mode Log

Location		Total depth:	K.B.
		2562 m	10.06 m
		Spud date:	G.L.
		20-Sep-2005	-2202 m
		Runs:	D.F.
		1 To 1	9.60 m

Location		Permanant datum:	MEAN SEA LEVEL	Elev.:
		Kelly Bushing		0 m
		Log measured from:	10.06 m above Perm. datum	
		Depth reference:	Driller's Depth	

Service Order no.	NAD 27	Longitude	Latitude
40012416	UTM Zone 10 N	W 126.98322	N 48.64480

Depth logged:	2212 m To	2561 m	Mag decl:	18.83 deg.	Other services:
Date logged:	20-Sep-05 To	21-Sep-05	Mag dip:	69.17 deg.	EcoScope, sonicVISION, provision

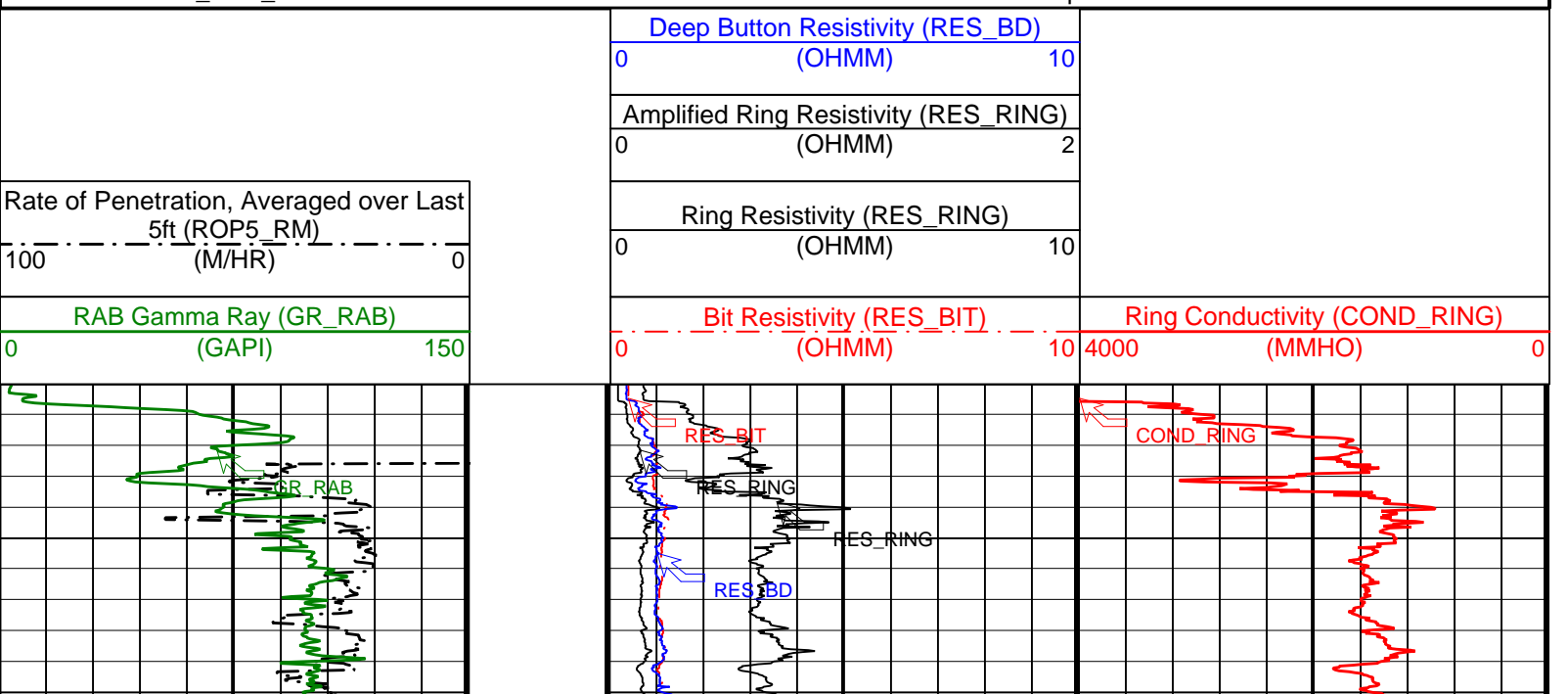
Bore hole record		Casing record				
Hole size	from	to	Size	Density	from	to
9.875 in.	2212 m	2562 m				

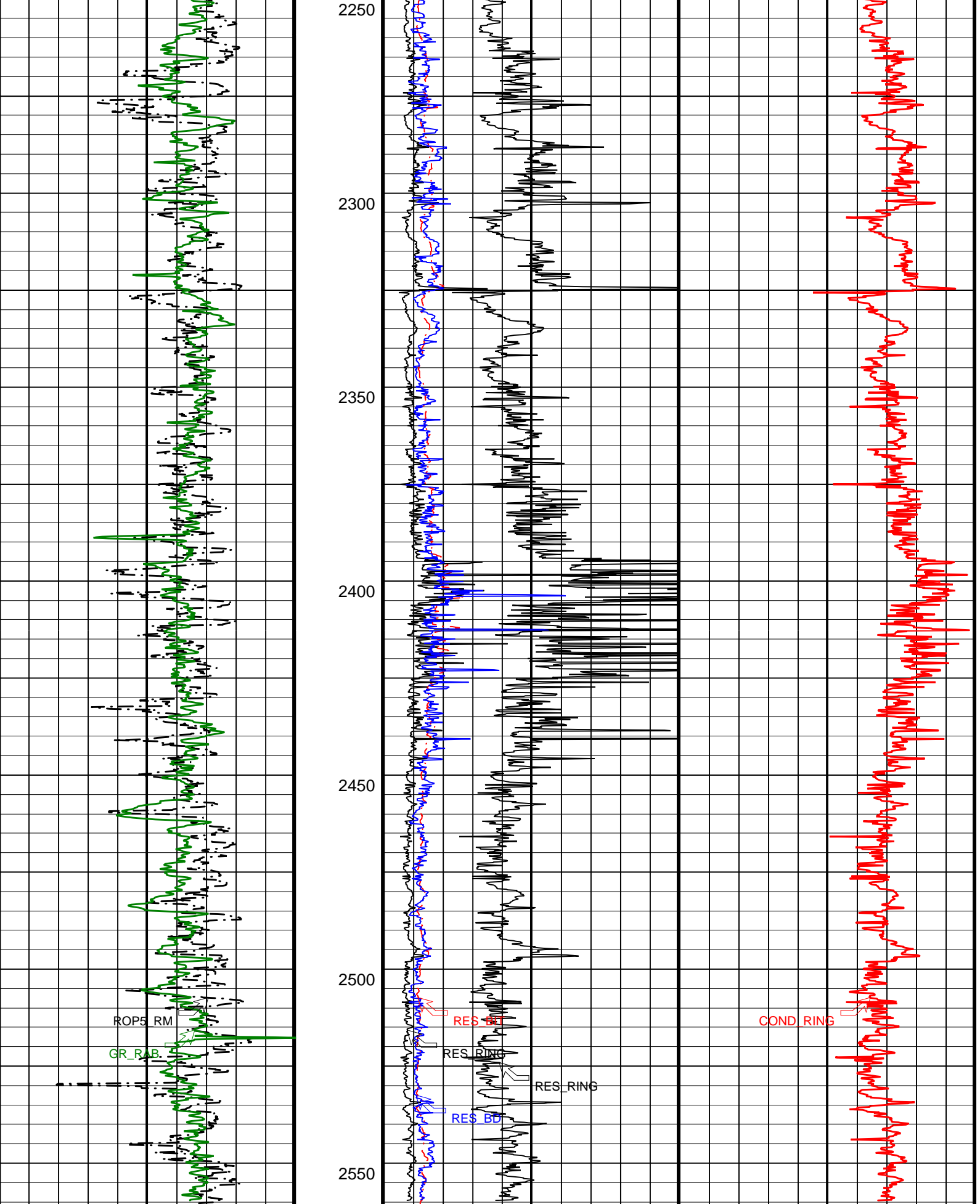
Type	Mud record	Borehole deviation record
	from	Min
	to	Max

Surface equipment		Software record	
Unit	TWIS	IDEAL Wis	ID10_2C_01
Depth system	Geolograph	SPM	hspm10_1c_05
		LWD	See Remarks
		MWD	9_0_C03

IDEAL Version: ID10\_2B\_08  
IDF

ADN      id10\_2c\_01  
 Format: GEOVIS\_RES\_1MD      Vertical Scale: 1:1200      Graphics File Created: 02-Oct-2005 17:10





RAB Gamma Ray (GR\_RAB)  
(GAPI) 150

Rate of Penetration, Averaged over Last 5ft (ROP5\_RM)

Bit Resistivity (RES\_BIT)  
(OHMM) 10

Ring Resistivity (RES\_RING)

Ring Conductivity (COND\_RING)  
(MMHO) 4000 0

100 (M/HR) 0

0	(OHMM)	10
Amplified Ring Resistivity (RES_RING)		
0	(OHMM)	2
Deep Button Resistivity (RES_BD)		
0	(OHMM)	10

IDEAL Version: ID10\_2B\_08  
IDF

ADN id10\_2c\_01

Company: Lamont-Doherty Borehole Research

**Schlumberger**

Well: IODP Expedition 311 CAS-02C

Field: Cascadia Margin

Rig: JOIDES Resolution

State: Pacific Ocean

GeoVISION Resistivity  
1:1200 Measured Depth  
Recorded Mode Log