

DISCLAIMER

THE USE OF AND RELIANCE UPON THIS RECORDED-DATA BY THE HEREIN NAMED COMPANY (AND ANY OF ITS AFFILIATES, PARTNERS, REPRESENTATIVES, AGENTS, CONSULTANTS AND EMPLOYEES) IS SUBJECT TO THE TERMS AND CONDITIONS AGREED UPON BETWEEN SCHLUMBERGER AND THE COMPANY, INCLUDING: (a) RESTRICTIONS ON USE OF THE RECORDED-DATA; (b) DISCLAIMERS AND WAIVERS OF WARRANTIES AND REPRESENTATIONS REGARDING COMPANY'S USE OF AND RELIANCE UPON THE RECORDED-DATA; AND (c) CUSTOMER'S FULL AND SOLE RESPONSIBILITY FOR ANY INFERENCE DRAWN OR DECISION MADE IN CONNECTION WITH THE USE OF THIS RECORDED-DATA.




OTHER SERVICES1 OS1: OS2: DITE/HNGS OS3: OS4: OS5:	OTHER SERVICES2 OS1: OS2: OS3: OS4: OS5:
---	---

REMARKS: RUN NUMBER 1 Hole drilled with APC/XCB. All depths in Meters Below Rig Floor (MBRF). Hole flushed with Sepiolite/Barite mud. Sea Floor Driller 2206.2 MBRF. Sea Floor Logger- 2205 MBRF. Total Depth Driller- 2510.5 MBRF Total Depth Logger- 2390 MBRF Casing Bottom Driller- 2267.03 MBRF. Casing Bottom Logger- 2267 MBRF Heave was 5-7 meters. No calipers run due to heave Tool would not come into pipe. Pipe was lowered and tool came in after some work. Schlumberger Heave compensator used.	REMARKS: RUN NUMBER 2
--	-----------------------

RUN 1			RUN 2		
SERVICE ORDER #:			SERVICE ORDER #:		
PROGRAM VERSION:		12C0-301	PROGRAM VERSION:		
FLUID LEVEL:			FLUID LEVEL:		
LOGGED INTERVAL	START	STOP	LOGGED INTERVAL	START	STOP

EQUIPMENT DESCRIPTION

RUN 1		RUN 2	
SURFACE EQUIPMENT			
GSR-U/Y 166 WITM (DTS)-A			

DOWNHOLE EQUIPMENT			
LEH-QT LEH-QT		23.43	
DTC-H ECH-KC DTCH0-A	CTEM TelStatus ToolStatu 	22.26 21.63	22.54
SCT-N	Gamma Ray 	21.35	21.62

SGT-IN
 SGH-K 2450
 SGC-TB 9585
 SGD-TAA

Gamma Ray

21.55 21.65

AH-MCD
 AH-MCD

19.95

DSST-B
 SPAC-B 8128
 ECH-SD 8128
 SMDR-BD 8076
 SSIJ-BA 8127
 SMDX-AA 8148

17.82

PWF

2.28

AH-MCD
 AH-MCD

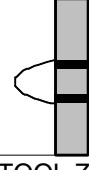
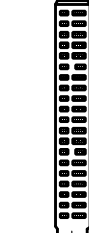
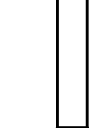
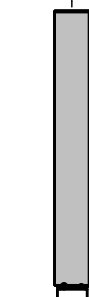
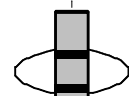
2.28

DF
 Tension HV

0.00

TOOL ZERO

MAXIMUM STRING DIAMETER 4.50 IN
 MEASUREMENTS RELATIVE TO TOOL ZERO
 ALL LENGTHS IN METERS



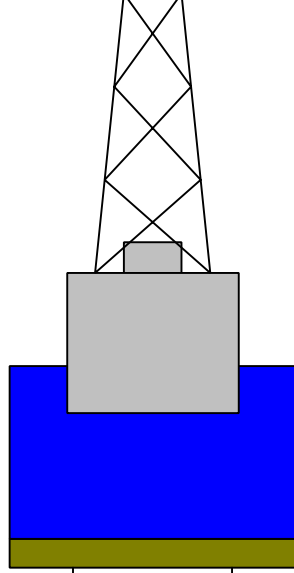
Production String	(in)	(m)	Well Schematic	(m)	(in)	Casing String
	OD ID MD	MD OD ID				

Kelly Bushing Elevation
Derrick Floor Elevation

Mean Sea Level

11.3
11.0

0.0



0.0 5.500

Casing String



2200.0 8.875

Borehole Segment

2510.5 9.875

Borehole Segment Bottom

Schlumberger

Pass #2

MAXIS Field Log

Output DLIS Files

DEFAULT DSI_022LUP FN:21 PRODUCER 22-Oct-2005 22:41 2387.7 M 2235.4 M

OP System Version: 12C0-301
MCM

DSST-B 12C0-301 SGT-N 12C0-301
DTC-H 12C0-301

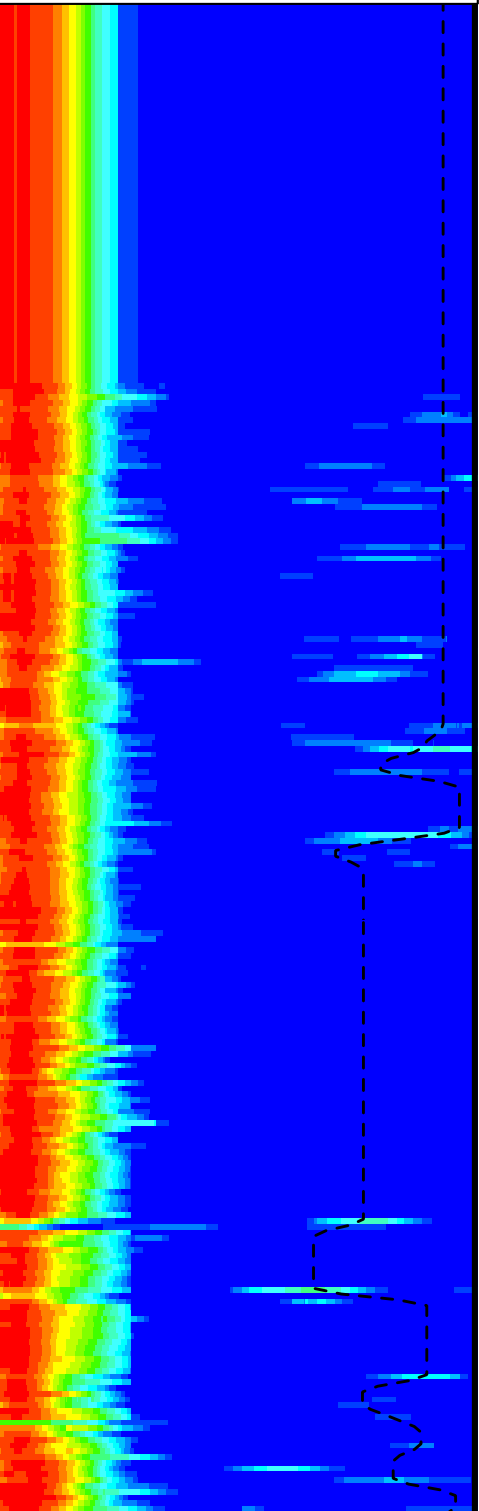
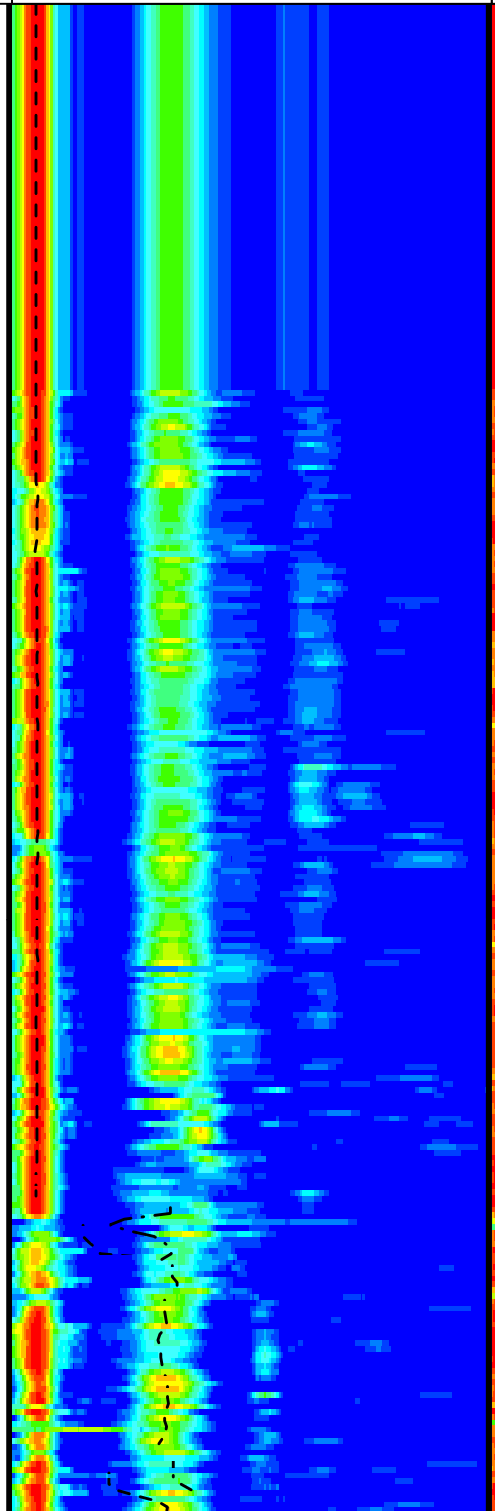
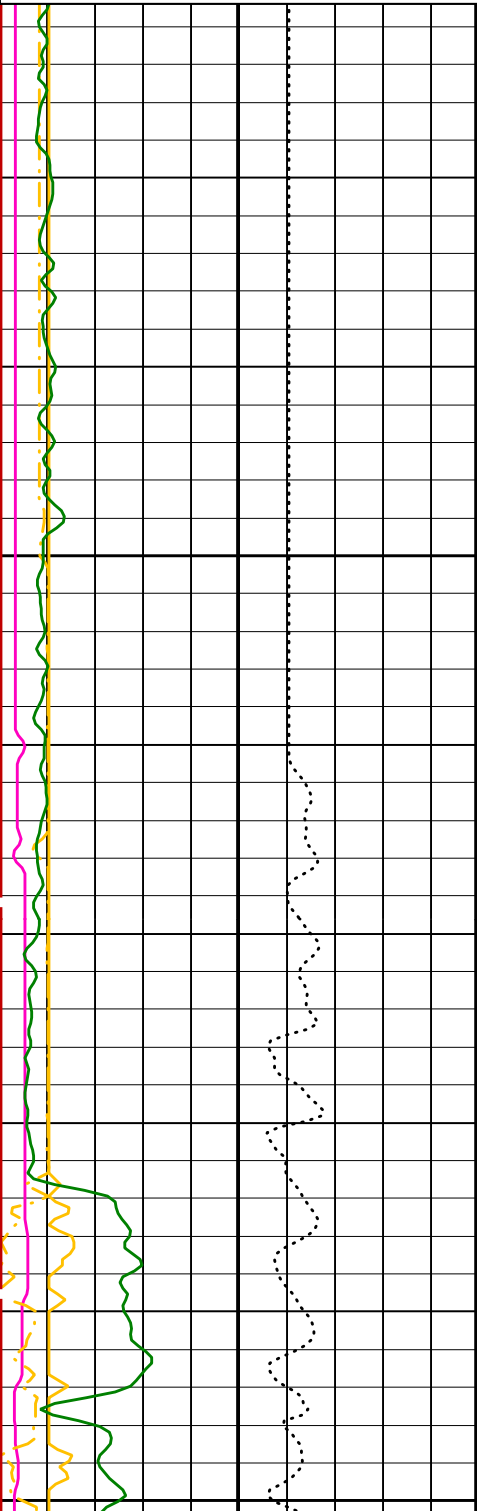
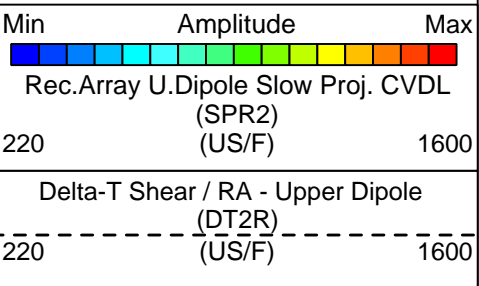
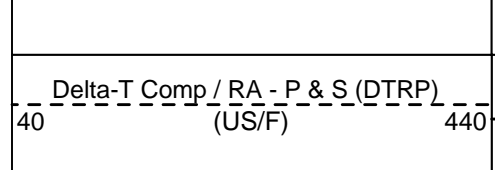
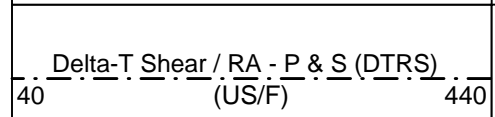
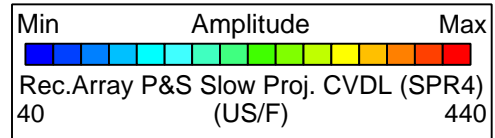
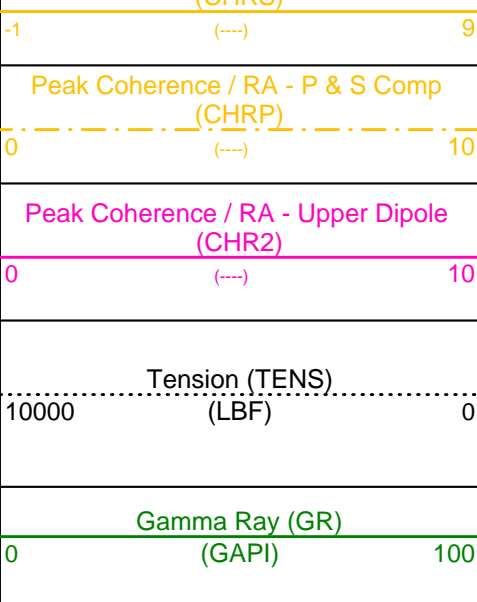
PIP SUMMARY

 Time Mark Every 60 S

Waveform Data Copy Indicator 4 -
Monopole P&S (WCI4)

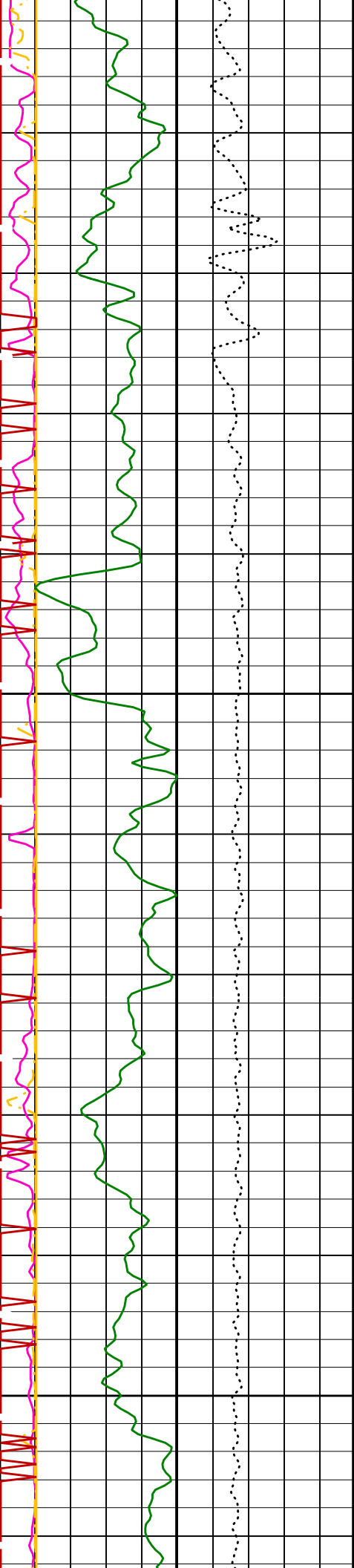
0 (----) 10

Peak Coherence / RA - P & S Shear
(CHRS)



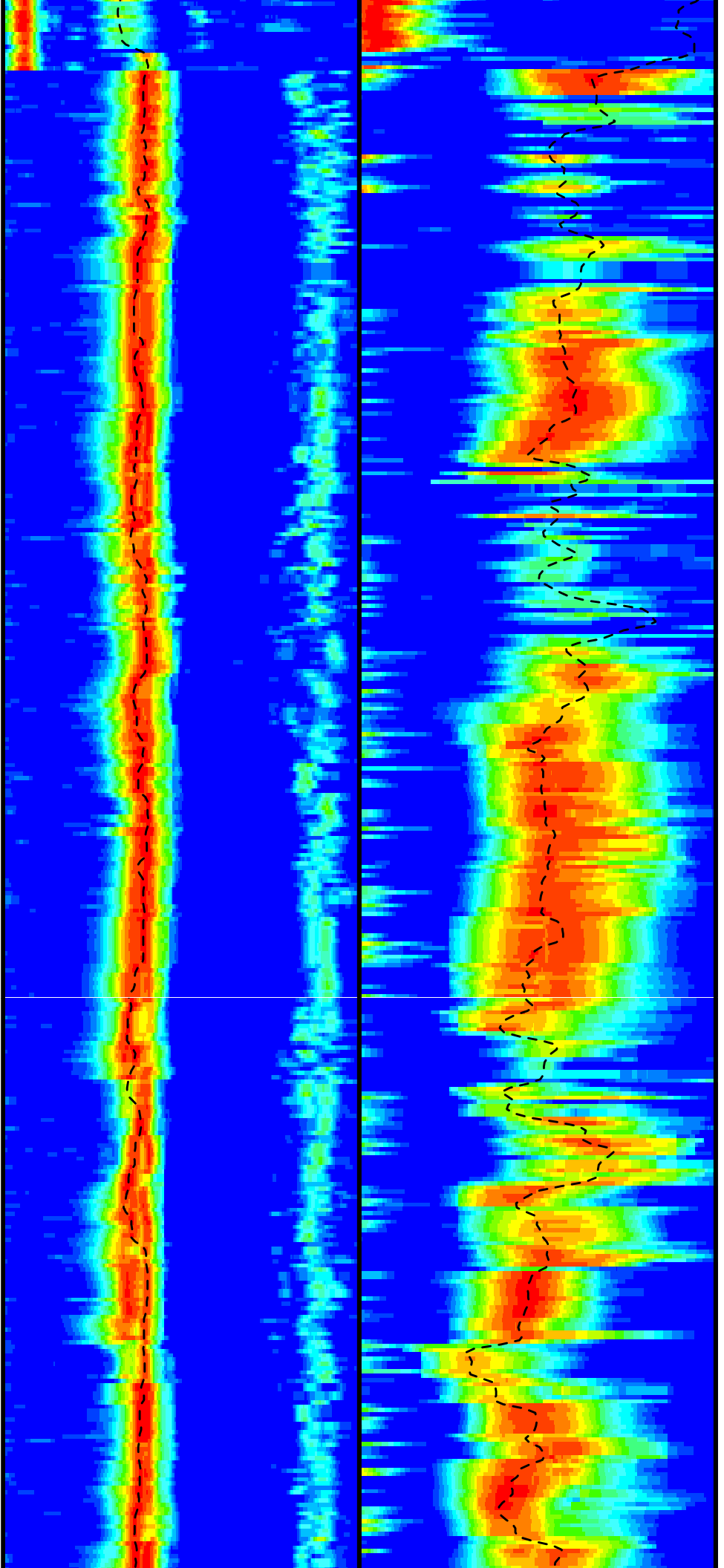
2250

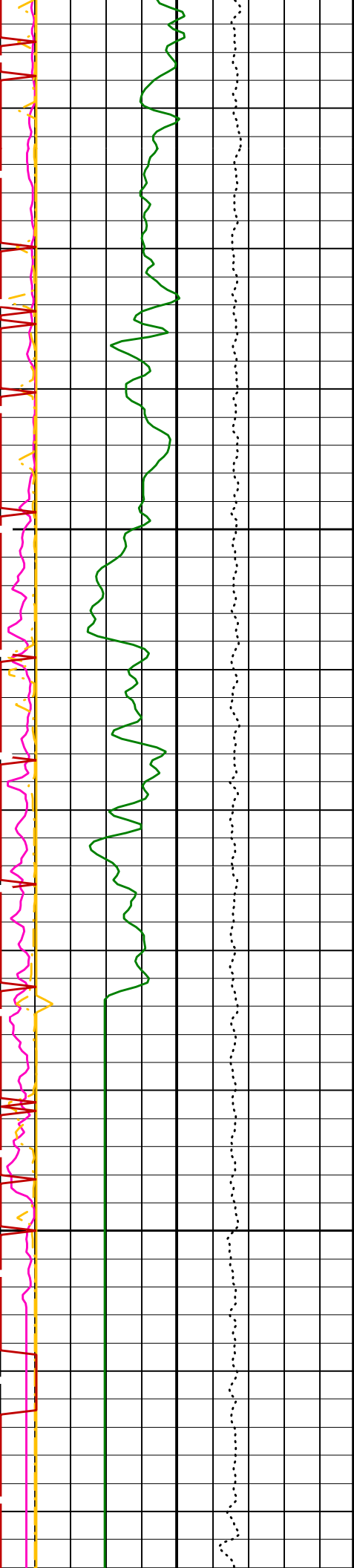
2275



2300

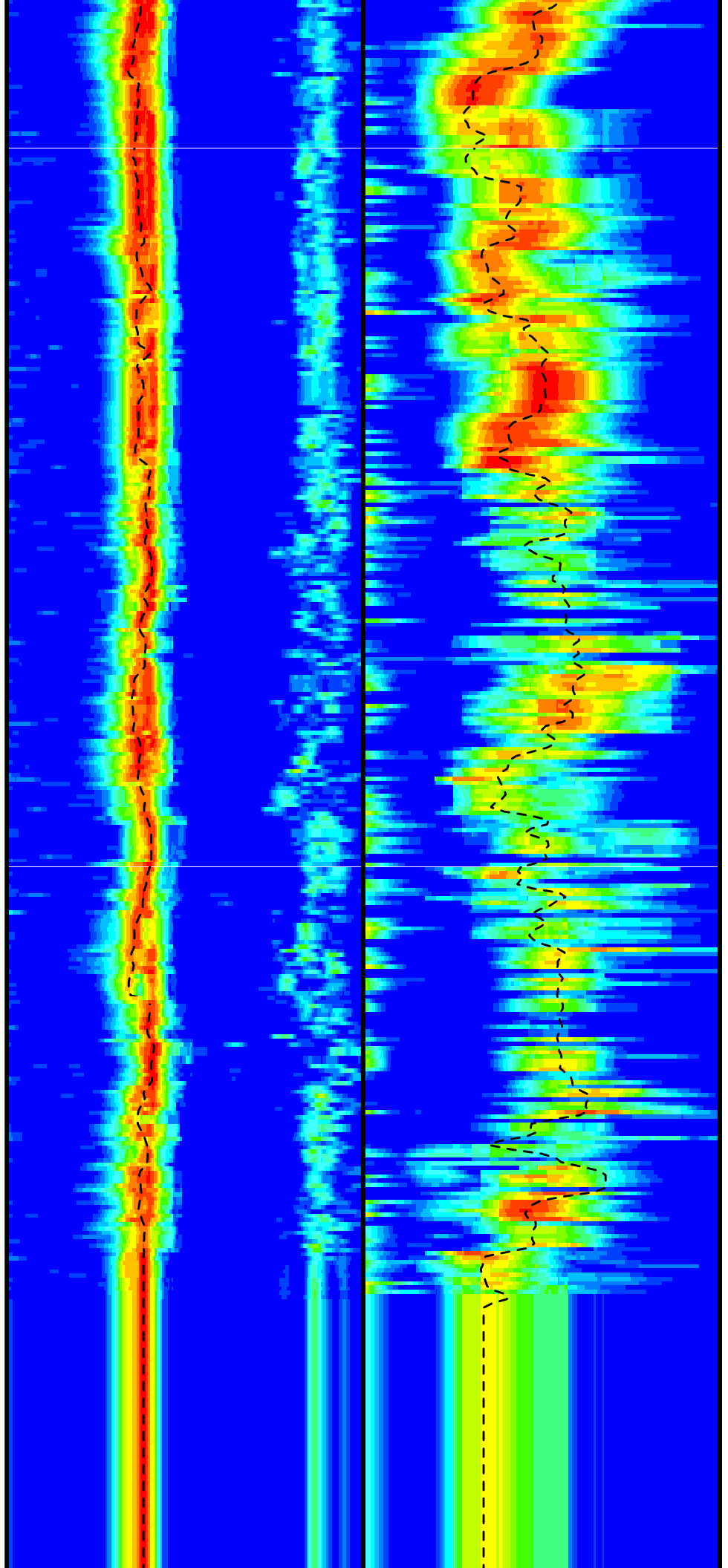
2325





2350

2375



Gamma Ray (GR) (GAPI) 0 100	Delta-T Comp / RA - P & S (DTRP) (US/F) 40 440	Delta-T Shear / RA - Upper Dipole (DT2R) (US/F) 220 1600
Tension (TENS) (LBF) 10000 0	Delta-T Shear / RA - P & S (DTRS) (US/F) 40 440	Min Amplitude Max Rec.Array U.Dipole Slow Proj. CVDL (SPR2) (US/F) 220 1600
Peak Coherence / RA - Upper Dipole (CHR2) 0 10	Min Amplitude Max Rec.Array P&S Slow Proj. CVDL (SPR4) (US/F) 40 440	
Peak Coherence / RA - P & S Comp (CHRP) 0 10		
Peak Coherence / RA - P & S Shear (CHRS) -1 9		
Waveform Data Copy Indicator 4 - Monopole P&S (WCI4) 0 10		

PIP SUMMARY

Time Mark Every 60 S

Parameters

DLIS Name	Description	Value
DSST-B: Dipole Shear Imager - B		
BHS	Borehole Status	OPEN
CASF	Label Casing Function - Monopole P&S	50
COLL	Label Slowness Lower Limit - Monopole P&S Compressional	40 US/F
COUL	Label Slowness Upper Limit - Monopole P&S Compressional	240 US/F
DDE2	Digitizing Delay 2	0 US
DDE4	Digitizing Delay 4	0 US
DDEX	Digitizing Delay X	0 US
DLCS	Label Compressional Source - Dipole Shear	USE
DSHL	Label Slowness Lower Limit - Dipole Shear	220 US/F
DSHU	Label Slowness Upper Limit - Dipole Shear	1600 US/F
DSI2	Digitizer Sample Interval 2	40 US
DSI4	Digitizer Sample Interval 4	10 US
DSIX	Digitizer Sample Interval X	40 US
DTCS	Compressional Delta-T Source for DTCO Channel	PS_COMP
DTF	Delta-T Fluid	189 US/F
DWC2	Digitizer Word Count 2	512
DWC4	Digitizer Word Count 4	512
DWCX	Digitizer Word Count X	512
FILG	Label Fill Gap Control - Monopole P&S	COMP_SHEAR
LFC	Label Formation Character - Monopole P&S	COMP_FIRST
MCS	Mean Casing Slowness	57 US/F
MTXG	Monopole Transmitter Geometry	186 IN
NWI2	Number Waveform Items 2	8
NWI4	Number Waveform Items 4	8
NWIX	Number Waveform Items X	0
RSMN	Label Shear/Compressional Minimum Ratio - Monopole P&S	1.4
RSMX	Label Shear/Compressional Maximum Ratio - Monopole P&S	2.12
RX1G	Receiver 1 Geometry	294 IN
RX2G	Receiver 2 Geometry	300 IN
RX3G	Receiver 3 Geometry	306 IN
RX4G	Receiver 4 Geometry	312 IN
RX5G	Receiver 5 Geometry	318 IN
RX6G	Receiver 6 Geometry	324 IN
RX7G	Receiver 7 Geometry	330 IN
RX8G	Receiver 8 Geometry	336 IN
SAM2	DSST Sonic Acquisition Mode 2 - Upper Dipole Mode	LFD_ODD
SAM4	DSST Sonic Acquisition Mode 4 - High Frequency Monopole Mode for P&S	MFD_EVEN
SAMX	DSST Sonic Acquisition Mode X - Both Dipoles or Monopole Mode for Expert	OFF
SAS2	STC Sonic Array Status - Upper Dipole	255
SAS4	STC Sonic Array Status - Monopole P&S	255
SBO2	STC Search Band Offset - Upper Dipole	3000 US

SBO4	STC Search Band Offset - Monopole P&S	500	US
SBR4	STC Baseline Removal - Monopole P&S	ON	
SBW2	STC Search Bandwidth - Upper Dipole	8000	US
SBW4	STC Search Bandwidth - Monopole P&S	2000	US
SFC2	STC Formation Character - Upper Dipole	SELECTABLE	
SFC4	STC Formation Character - Monopole P&S	SELECTABLE	
SFM2	STC Filter - Upper Dipole	B.3-1.5K	
SFM4	STC Filter - Monopole P&S	B3-12K	
SHLL	Label Slowness Lower Limit - Monopole P&S Shear	75	US/F
SHUL	Label Slowness Upper Limit - Monopole P&S Shear	240	US/F
SLL2	STC Slowness Lower Limit - Upper Dipole	220	US/F
SLL4	STC Slowness Lower Limit - Monopole P&S	40	US/F
SST2	STC Slowness Step - Upper Dipole	4	US/F
SST4	STC Slowness Step - Monopole P&S	2	US/F
SSW2	STC Source Waveform - Upper Dipole	WF_SAM2	
SSW4	STC Source Waveform - Monopole P&S	WF_SAM4	
STLL	Label Slowness Lower Limit - Monopole Stoneley	220	US/F
STUL	Label Slowness Upper Limit - Monopole Stoneley	1600	US/F
SUL2	STC Slowness Upper Limit - Upper Dipole	1600	US/F
SUL4	STC Slowness Upper Limit - Monopole P&S	440	US/F
SWD2	STC Slowness Width - Upper Dipole	40	US/F
SWD4	STC Slowness Width - Monopole P&S	10	US/F
TBF2	STC Time for Baseline Fill - Upper Dipole	0	US
TBF4	STC Time for Baseline Fill - Monopole P&S	300	US
TLL2	STC Time Lower Limit - Upper Dipole	1420	US
TLL4	STC Time Lower Limit - Monopole P&S	150	US
TST2	STC Time Step - Upper Dipole	200	US
TST4	STC Time Step - Monopole P&S	50	US
TUL2	STC Time Upper Limit - Upper Dipole	20440	US
TUL4	STC Time Upper Limit - Monopole P&S	5110	US
TWD2	STC Time Width - Upper Dipole	2000	US
TWD4	STC Time Width - Monopole P&S	1000	US
TWI2	STC Integration Time Window - Upper Dipole	1600	US
TWI4	STC Integration Time Window - Monopole P&S	500	US
TWSX	Transmitter Waveform Select X	0	
UTXG	Upper Dipole Transmitter Geometry	162	IN
WFM4	Waveform Mode 4	W1	
BHS	SGT-N: Scintillation Gamma-Ray - N Borehole Status	OPEN	

Format: DSST_P_S_UPPER_VDL_COLOR Vertical Scale: 1:200 Graphics File Created: 22-Oct-2005 22:41

OP System Version: 12C0-301

MCM

DSST-B	12C0-301	SGT-N	12C0-301
DTC-H	12C0-301		

Output DLIS Files

DEFAULT	DSI_022LUP	FN:21	PRODUCER	22-Oct-2005 22:41
---------	------------	-------	----------	-------------------

Output DLIS Files

DEFAULT	DSI_022LUP	FN:21	PRODUCER	22-Oct-2005 22:41	2387.7 M	2235.4 M
---------	------------	-------	----------	-------------------	----------	----------

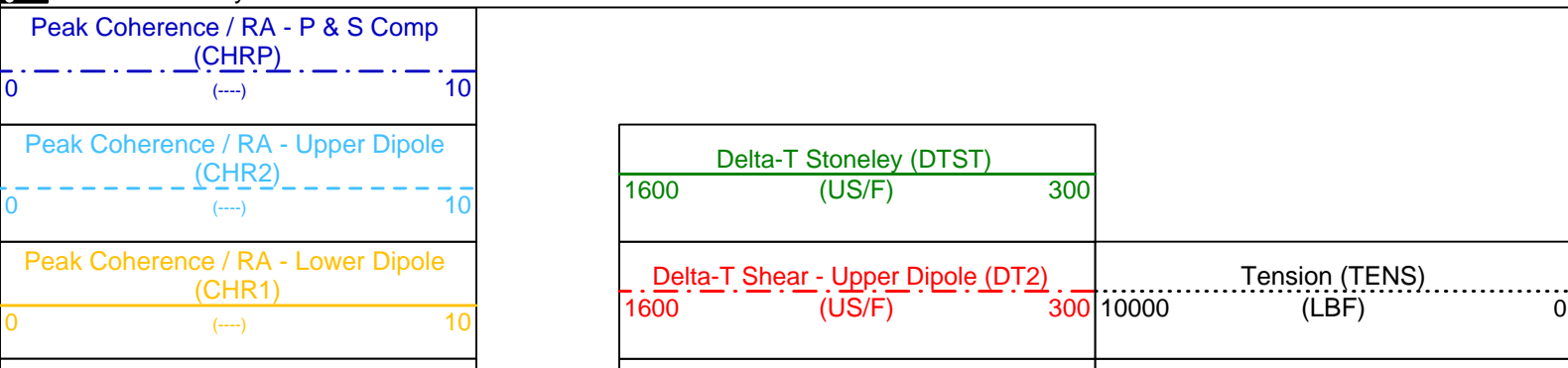
OP System Version: 12C0-301

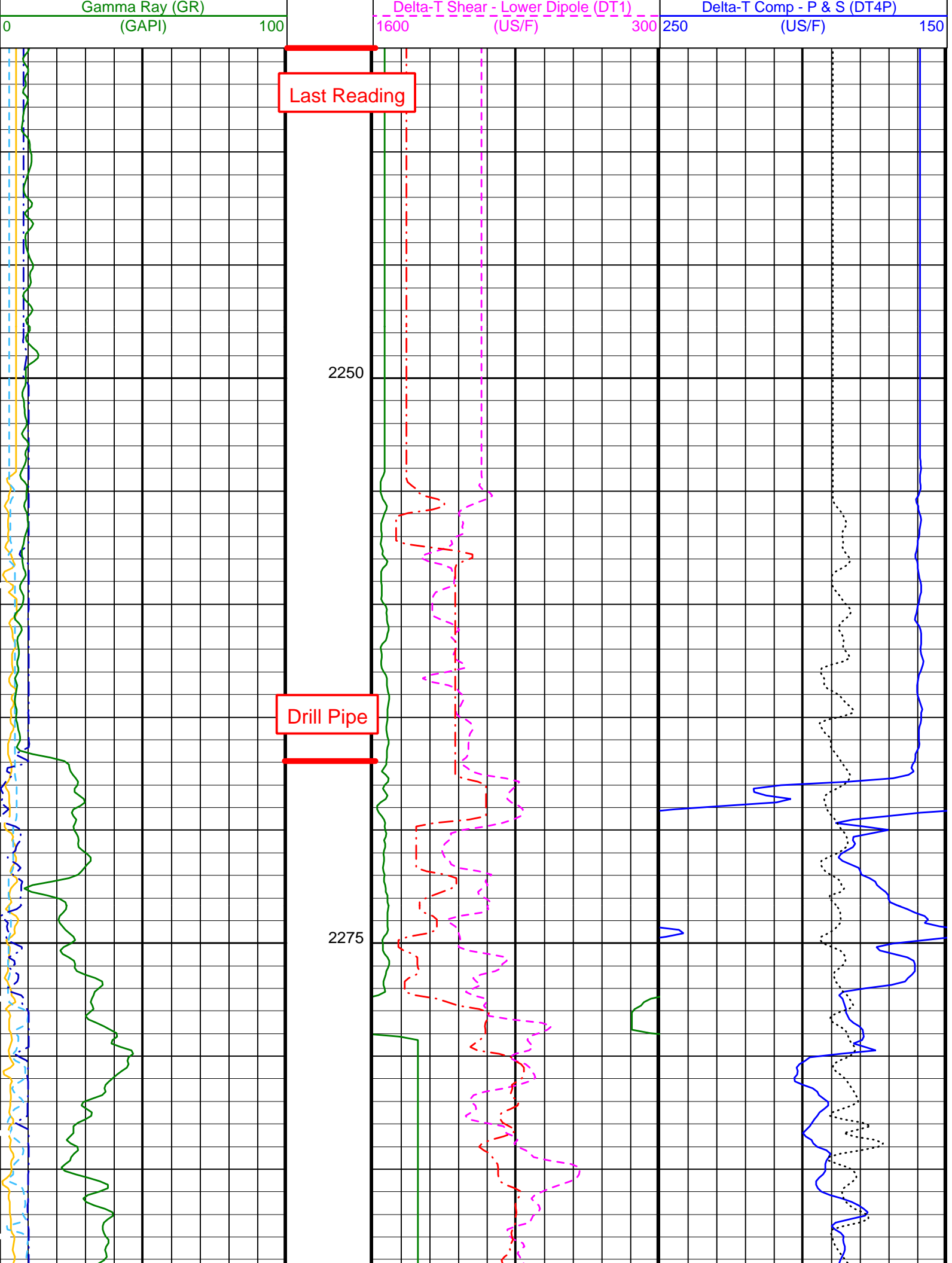
MCM

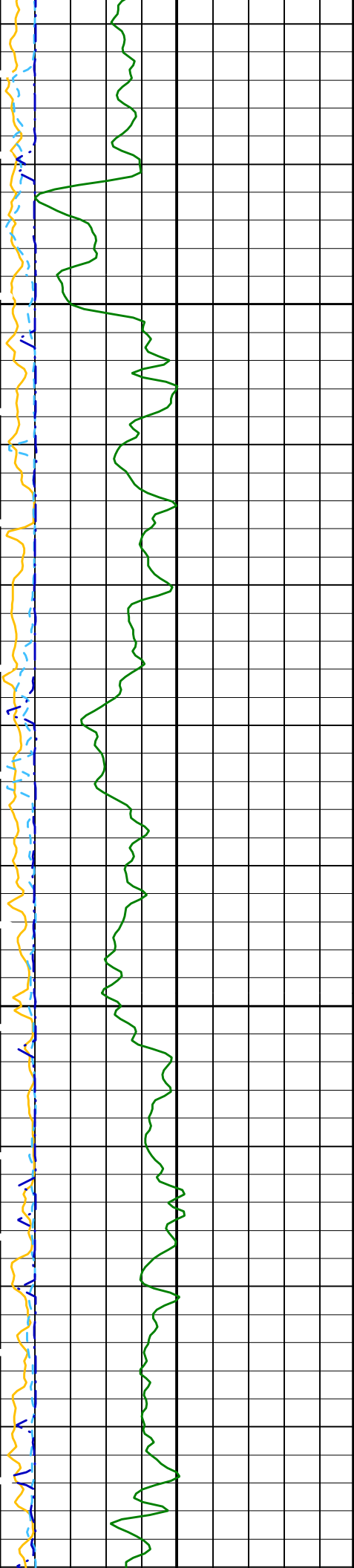
DSST-B	12C0-301	SGT-N	12C0-301
DTC-H	12C0-301		

PIP SUMMARY

Time Mark Every 60 S

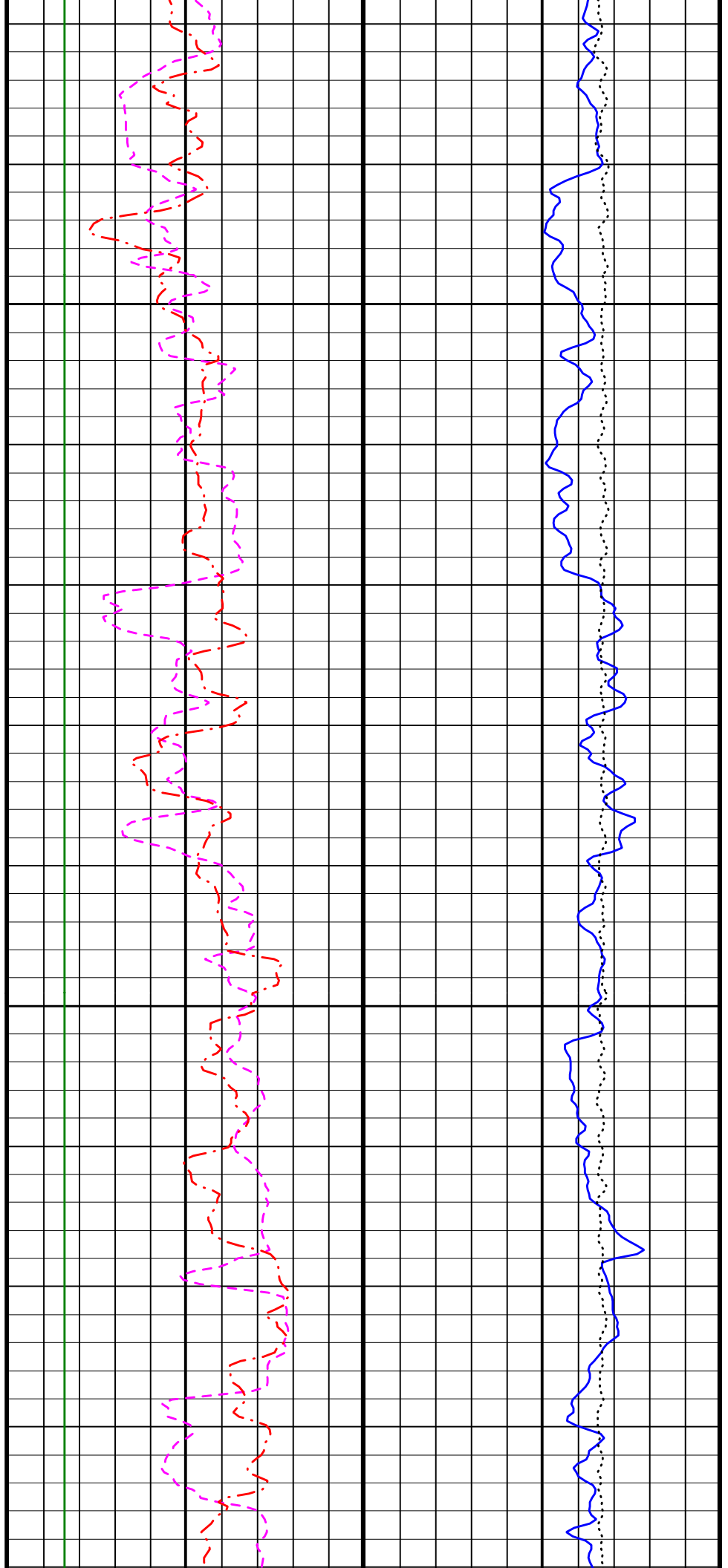


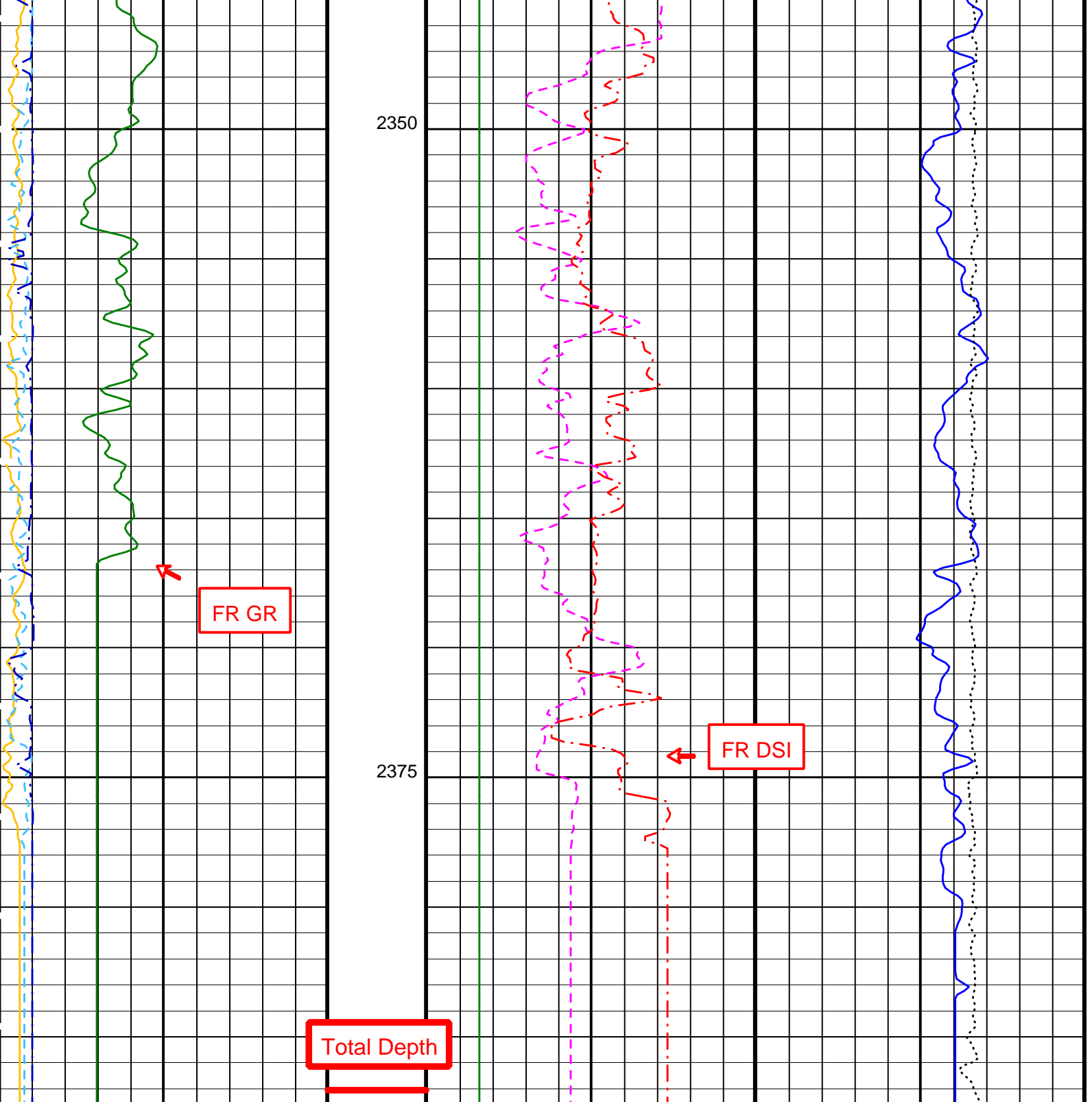




2300

2325





Gamma Ray (GR) (GAPI)	0	100
Peak Coherence / RA - Lower Dipole (CHR1)	0	10
Peak Coherence / RA - Upper Dipole (CHR2)	0	10
Peak Coherence / RA - P & S Comp (CHRP)	0	10

Delta-T Shear - Lower Dipole (DT1) (US/F)	1600	300
Delta-T Shear - Upper Dipole (DT2) (US/F)	1600	300
Delta-T Stoneley (DTST) (US/F)	1600	300

Delta-T Comp - P & S (DT4P) (US/F)	250	150
Tension (TENS) (LBF)	10000	0

Parameters

DLIS Name	Description	Value
DSST-B: Dipole Shear Imager - B		
BHS	Borehole Status	OPEN
CASF	Label Casing Function - Monopole P&S	50
COLL	Label Slowness Lower Limit - Monopole P&S Compressional	40 US/F
COUL	Label Slowness Upper Limit - Monopole P&S Compressional	240 US/F
DLCS	Label Compressional Source - Dipole Shear	USE
DSHL	Label Slowness Lower Limit - Dipole Shear	220 US/F
DSHU	Label Slowness Upper Limit - Dipole Shear	1600 US/F
DTCS	Compressional Delta-T Source for DTCSO Channel	PS_COMP
DTF	Delta-T Fluid	189 US/F
FILG	Label Fill Gap Control - Monopole P&S	COMP_SHEAR
LFC	Label Vibration Character - Monopole P&S	COMP_FIRST
LTXG	Lower Dipole Transmitter Geometry	156 IN
MCS	Mean Casing Slowness	57 US/F
MTXG	Monopole Transmitter Geometry	186 IN
NWI1	Number Waveform Items 1	8
NWI2	Number Waveform Items 2	8
NWI4	Number Waveform Items 4	8
NWIX	Number Waveform Items X	0
RSMN	Label Shear/Compressional Minimum Ratio - Monopole P&S	1.4
RSMX	Label Shear/Compressional Maximum Ratio - Monopole P&S	2.12
RX1G	Receiver 1 Geometry	294 IN
RX2G	Receiver 2 Geometry	300 IN
RX3G	Receiver 3 Geometry	306 IN
RX4G	Receiver 4 Geometry	312 IN
RX5G	Receiver 5 Geometry	318 IN
RX6G	Receiver 6 Geometry	324 IN
RX7G	Receiver 7 Geometry	330 IN
RX8G	Receiver 8 Geometry	336 IN
SAS1	STC Sonic Array Status - Lower Dipole	255
SAS2	STC Sonic Array Status - Upper Dipole	255
SAS4	STC Sonic Array Status - Monopole P&S	255
SFM1	STC Filter - Lower Dipole	B1-3K
SFM2	STC Filter - Upper Dipole	B.3-1.5K
SHLL	Label Slowness Lower Limit - Monopole P&S Shear	75 US/F
SHUL	Label Slowness Upper Limit - Monopole P&S Shear	240 US/F
SSW1	STC Source Waveform - Lower Dipole	WF_SAM1
SSW2	STC Source Waveform - Upper Dipole	WF_SAM2
SSW4	STC Source Waveform - Monopole P&S	WF_SAM4
STLL	Label Slowness Lower Limit - Monopole Stoneley	220 US/F
STUL	Label Slowness Upper Limit - Monopole Stoneley	1600 US/F
TWI1	STC Integration Time Window - Lower Dipole	1600 US
TWI2	STC Integration Time Window - Upper Dipole	1600 US
TWI4	STC Integration Time Window - Monopole P&S	500 US
UTXG	Upper Dipole Transmitter Geometry	162 IN
SGT-N: Scintillation Gamma-Ray - N		
BHS	Borehole Status	OPEN

Format: DSI_Field_Print Vertical Scale: 1:200 Graphics File Created: 22-Oct-2005 22:41

OP System Version: 12C0-301

MCM

DSST-B	12C0-301	SGT-N	12C0-301
DTC-H	12C0-301		

Output DLIS Files

DEFAULT	DSI_022LUP	FN:21	PRODUCER 22-Oct-2005 22:41
---------	------------	-------	----------------------------



Pass #1

Output DLIS Files

DEFAULT

DSI_021LUP

FN:20

PRODUCER

22-Oct-2005 21:53

2390.4 M

2275.0 M

OP System Version: 12C0-301

MCM

DSST-B

12C0-301

SGT-N

12C0-301

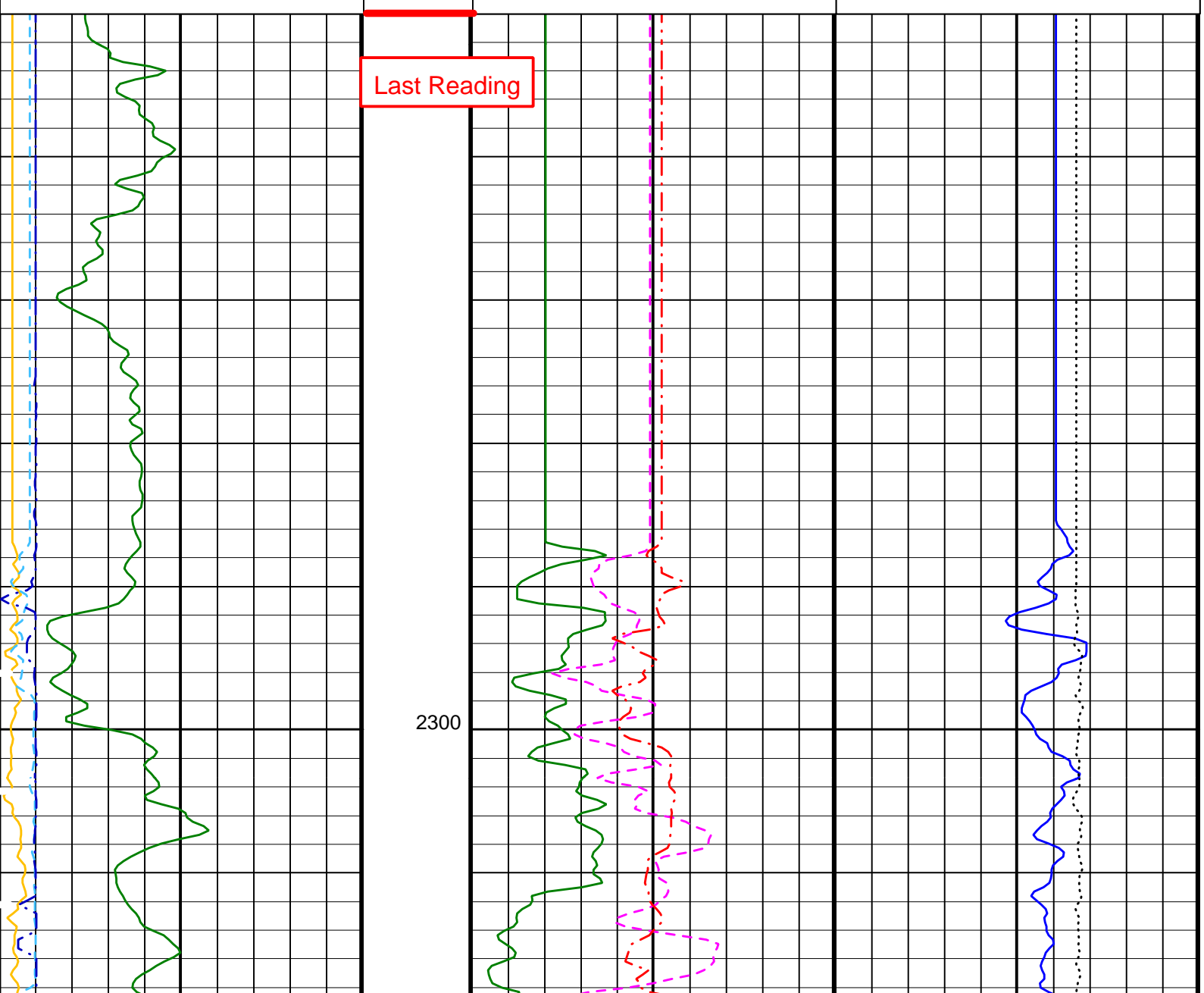
DTC-H

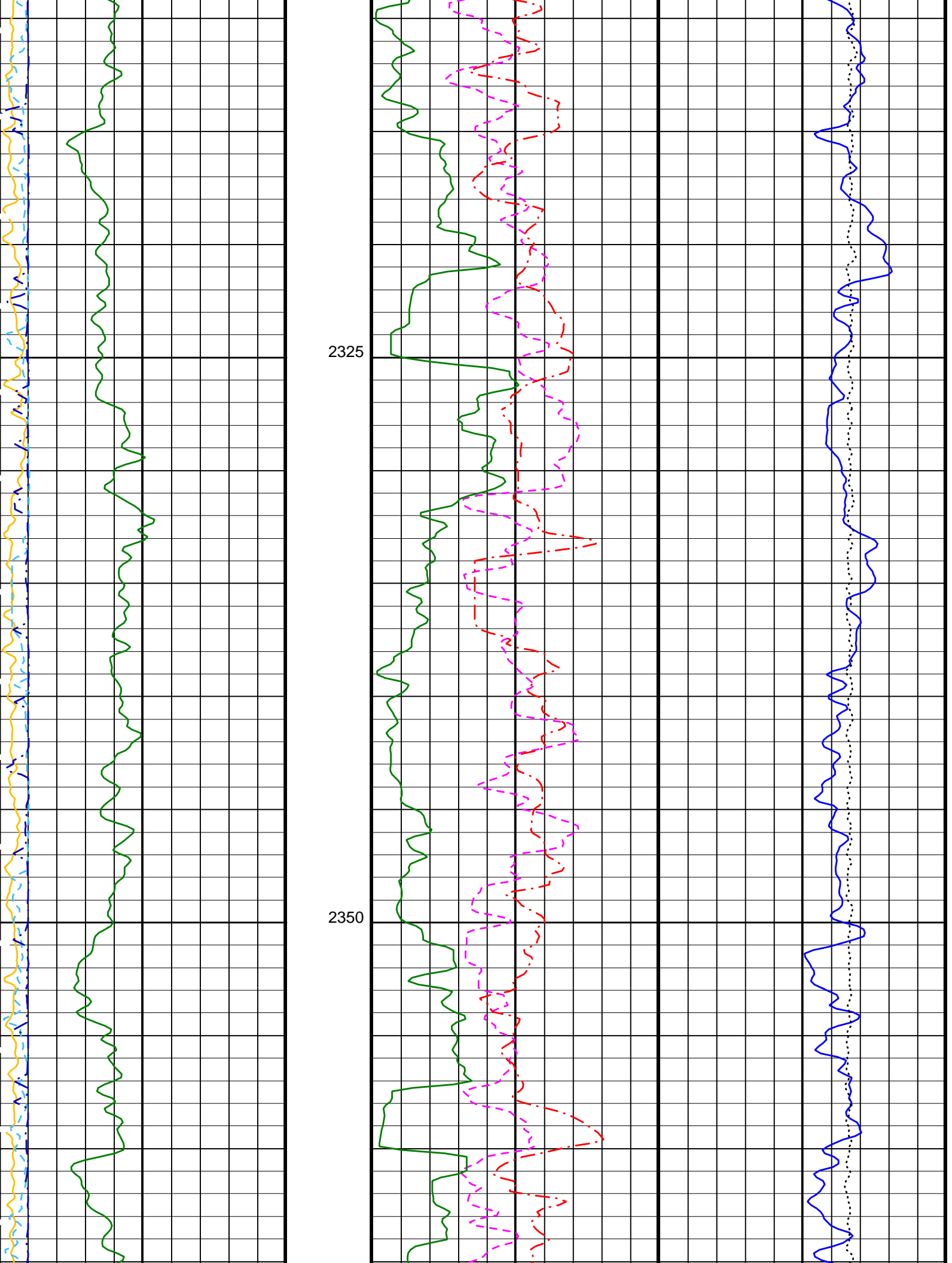
12C0-301

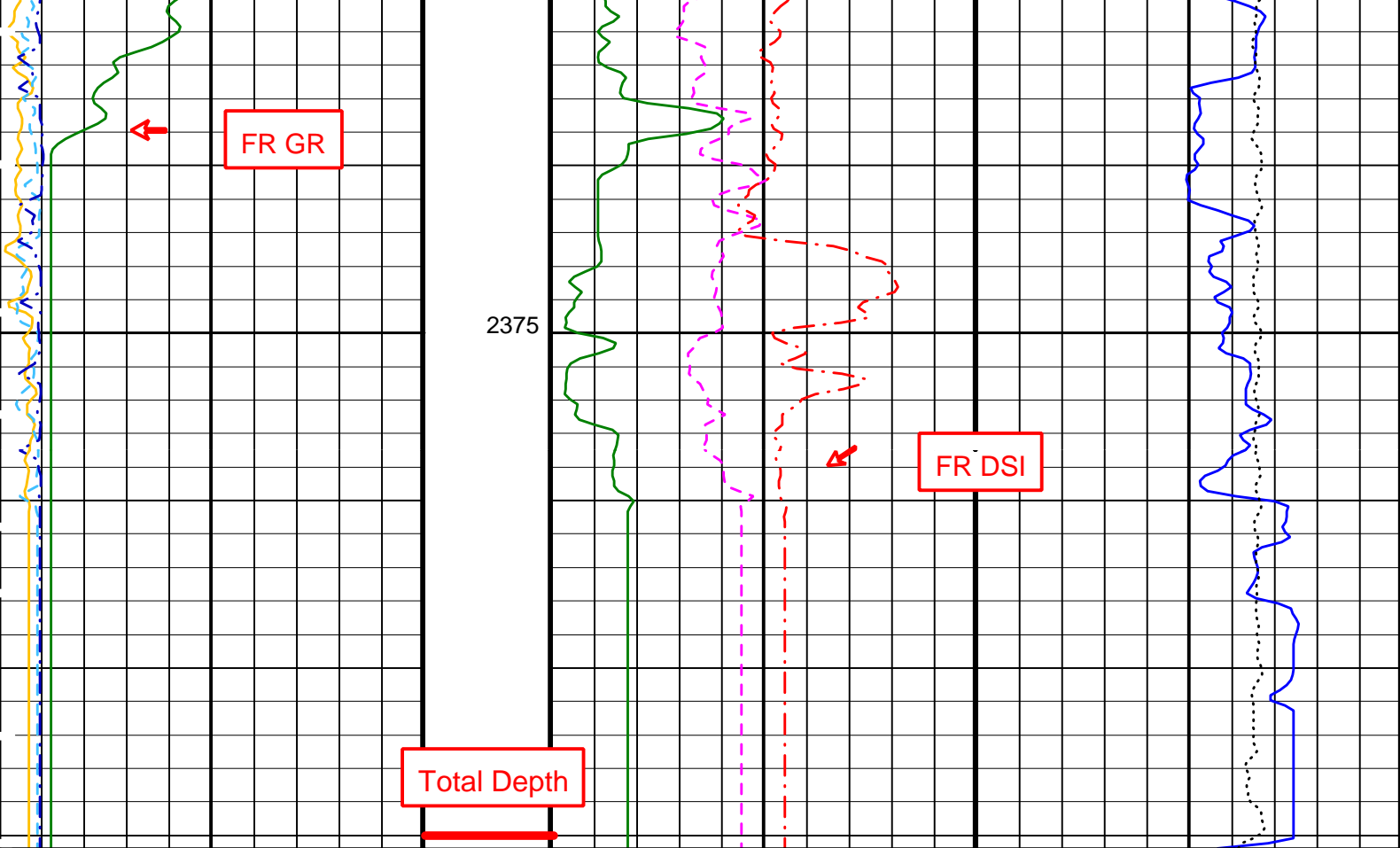
PIP SUMMARY

Time Mark Every 60 S

Peak Coherence / RA - P & S Comp (CHRP) 0 (---) 10	Delta-T Stoneley (DTST) 1600 (US/F) 300			
Peak Coherence / RA - Upper Dipole (CHR2) 0 (---) 10	Delta-T Shear - Upper Dipole (DT2) 1600 (US/F) 300		Tension (TENS) 10000 (LBF) 0	
Peak Coherence / RA - Lower Dipole (CHR1) 0 (---) 10	Delta-T Shear - Lower Dipole (DT1) 1600 (US/F) 300		Delta-T Comp - P & S (DT4P) 250 (US/F) 150	
Gamma Ray (GR) (GAPI) 0 100				







Gamma Ray (GR) (GAPI)	0	100	Delta-T Shear - Lower Dipole (DT1) (US/F)	1600	300	Delta-T Comp - P & S (DT4P) (US/F)	250	150
Peak Coherence / RA - Lower Dipole (CHR1)	0	10	Delta-T Shear - Upper Dipole (DT2) (US/F)	1600	300	Tension (TENS) (LBF)	10000	0
Peak Coherence / RA - Upper Dipole (CHR2)	0	10	Delta-T Stoneley (DTST) (US/F)	1600	300			
Peak Coherence / RA - P & S Comp (CHRP)	0	10						

PIP SUMMARY

Time Mark Every 60 S

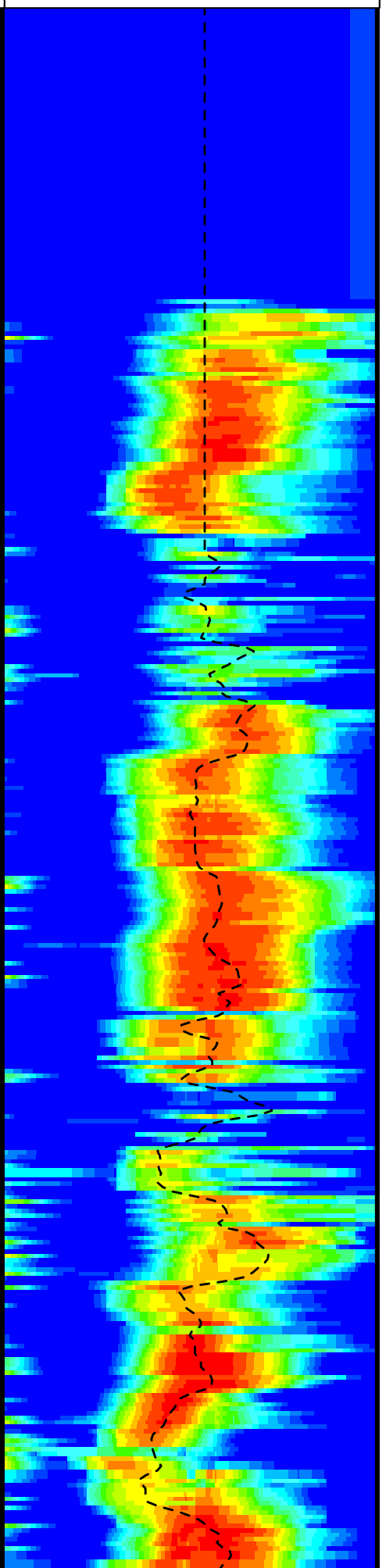
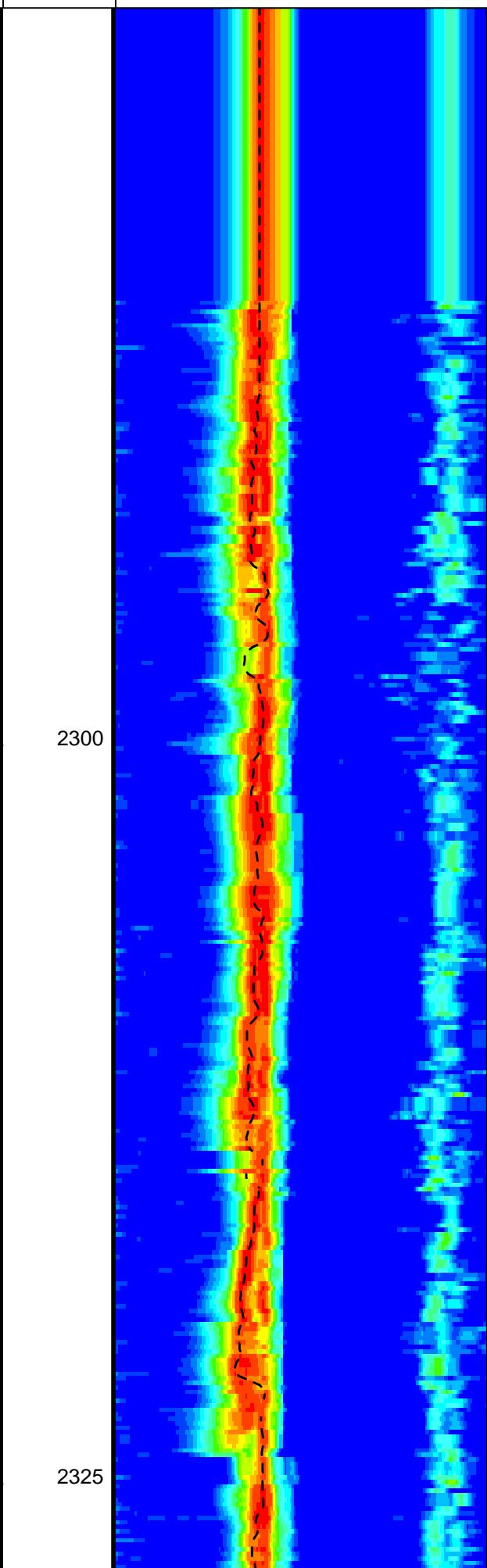
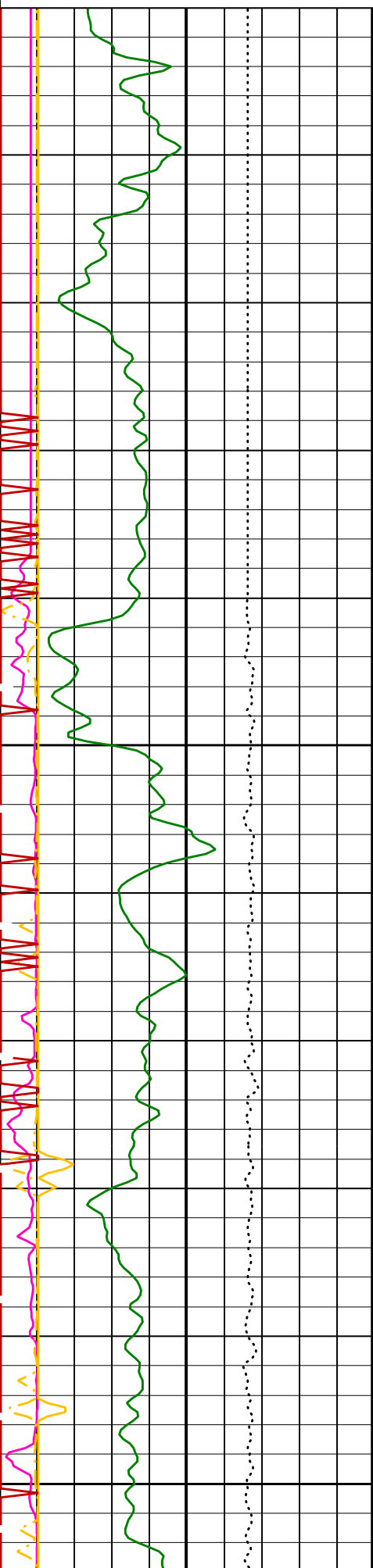
Parameters

DLIS Name	Description	Value
DSST-B:	Dipole Shear Imager - B	
BHS	Borehole Status	OPEN
CASF	Label Casing Function - Monopole P&S	50
COLL	Label Slowness Lower Limit - Monopole P&S Compressional	40 US/F
COUL	Label Slowness Upper Limit - Monopole P&S Compressional	240 US/F
DLCS	Label Compressional Source - Dipole Shear	USE
DSHL	Label Slowness Lower Limit - Dipole Shear	220 US/F
DSHU	Label Slowness Upper Limit - Dipole Shear	1600 US/F
DTCS	Compressional Delta-T Source for DTCS Channel	PS_COMP
DTF	Delta-T Fluid	189 US/F
FILG	Label Fill Gap Control - Monopole P&S	COMP_SHEAR
LFC	Label Formation Character - Monopole P&S	COMP_FIRST
LTXG	Lower Dipole Transmitter Geometry	156 IN
MCS	Mean Casing Slowness	57 US/F
MTXG	Monopole Transmitter Geometry	186 IN
NWI1	Number Waveform Items 1	8
NWI2	Number Waveform Items 2	8
NWI4	Number Waveform Items 4	8
NWIX	Number Waveform Items X	0
RSMN	Label Shear/Compressional Minimum Ratio - Monopole P&S	1.4

Gamma Ray (GR)
(GAPI) 0 100

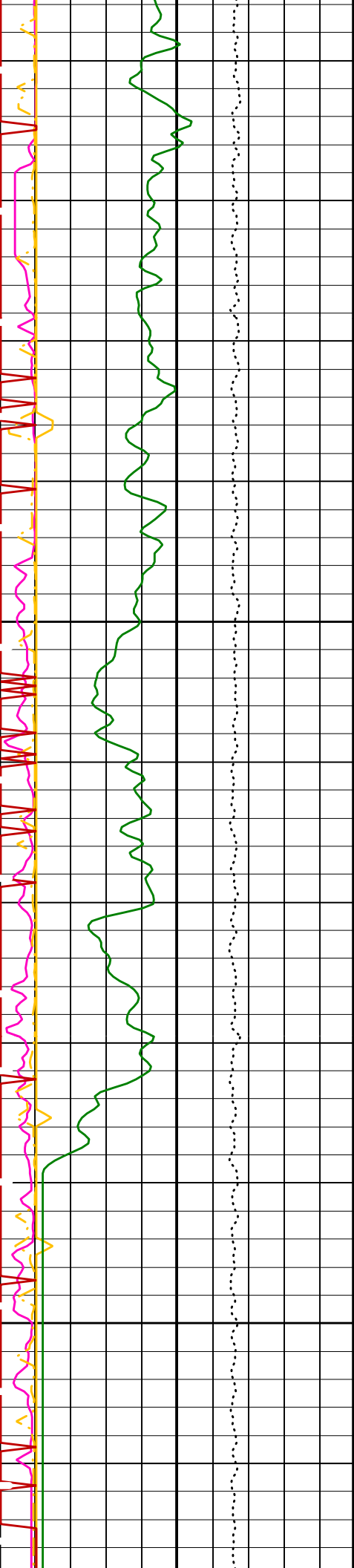
Delta-T Comp / RA - P & S (DTRP)
(US/F) 40 440

Delta-T Shear / RA - Upper Dipole
(DT2R)
(US/F) 220 1600



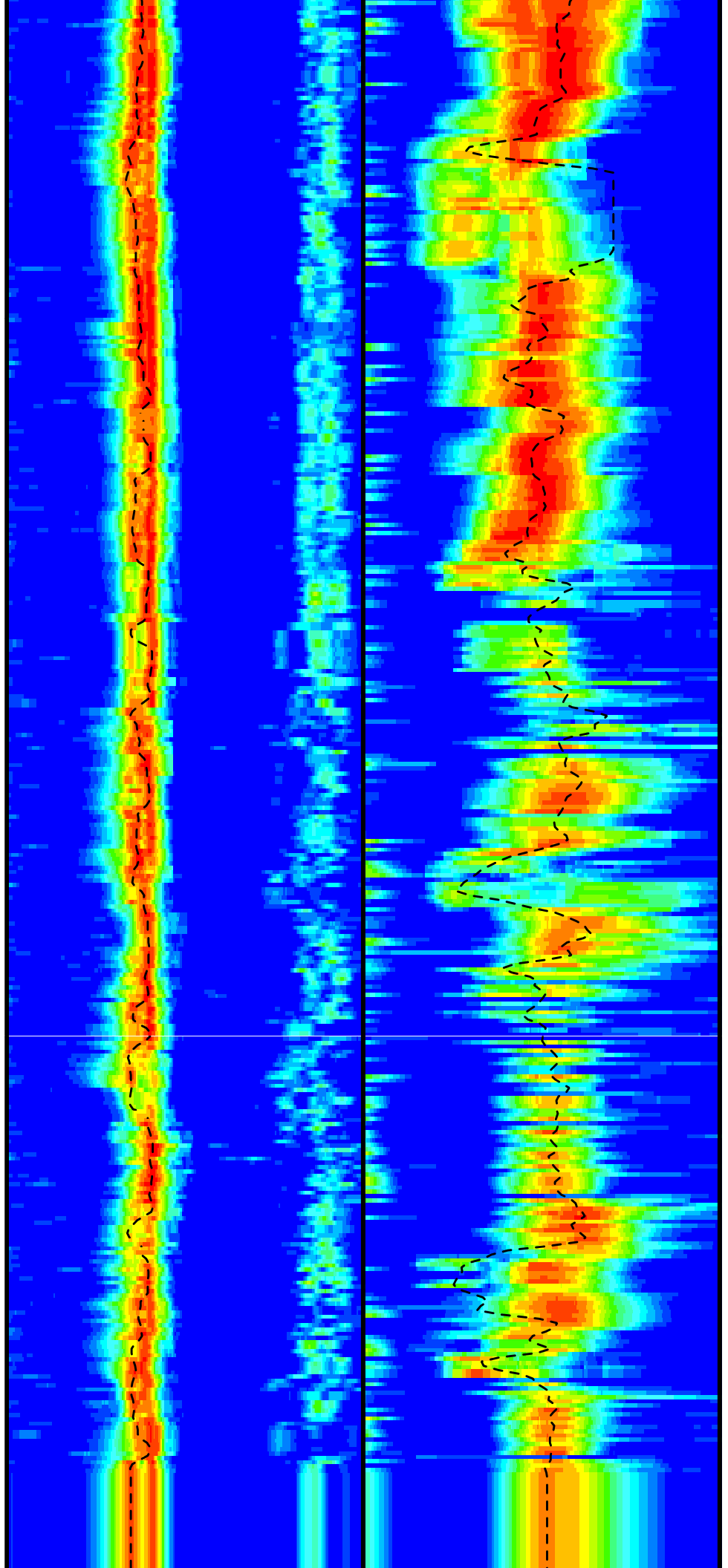
2300

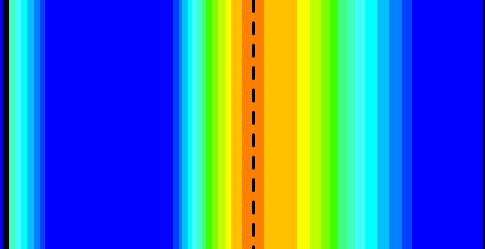
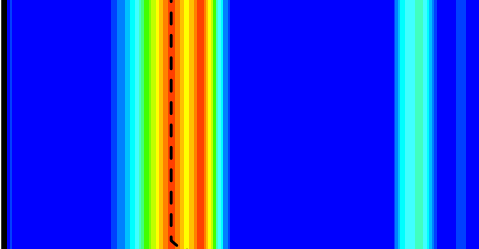
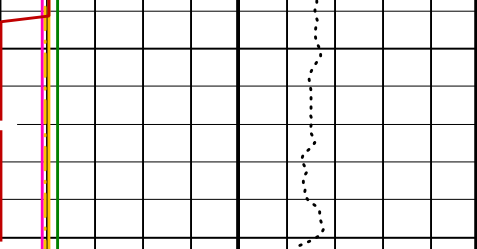
2325



2350

2375





Gamma Ray (GR)
(GAPI) 0 100

Delta-T Comp / RA - P & S (DTRP)
(US/F) 40 440

Delta-T Shear / RA - Upper Dipole
(DT2R) (US/F) 220 1600

Tension (TENS)
(LBF) 10000 0

Delta-T Shear / RA - P & S (DTRS)
(US/F) 40 440

Min Amplitude Max
Rec.Array U.Dipole Slow Proj. CVDL
(SPR2) (US/F) 220 1600

Peak Coherence / RA - Upper Dipole
(CHR2) 0 10

Min Amplitude Max
Rec.Array P&S Slow Proj. CVDL (SPR4)
(US/F) 40 440

Peak Coherence / RA - P & S Comp
(CHRP) 0 10

Peak Coherence / RA - P & S Shear
(CHRS) -1 9

Waveform Data Copy Indicator 4 -
Monopole P&S (WCI4) 0 10

PIP SUMMARY

Time Mark Every 60 S

Parameters

DLIS Name	Description	Value
DSST-B: Dipole Shear Imager - B		
BHS	Borehole Status	OPEN
CASF	Label Casing Function - Monopole P&S	50
COLL	Label Slowness Lower Limit - Monopole P&S Compressional	40 US/F
COUL	Label Slowness Upper Limit - Monopole P&S Compressional	240 US/F
DDE2	Digitizing Delay 2	0 US
DDE4	Digitizing Delay 4	0 US
DDEX	Digitizing Delay X	0 US
DLCS	Label Compressional Source - Dipole Shear	USE
DSHL	Label Slowness Lower Limit - Dipole Shear	220 US/F
DSHU	Label Slowness Upper Limit - Dipole Shear	1600 US/F
DSI2	Digitizer Sample Interval 2	40 US
DSI4	Digitizer Sample Interval 4	10 US
DSIX	Digitizer Sample Interval X	40 US
DTCS	Compressional Delta-T Source for DTCO Channel	PS_COMP
DTF	Delta-T Fluid	189 US/F
DWC2	Digitizer Word Count 2	512
DWC4	Digitizer Word Count 4	512
DWCX	Digitizer Word Count X	512
FILG	Label Fill Gap Control - Monopole P&S	COMP_SHEAR
LFC	Label Formation Character - Monopole P&S	COMP_FIRST
MCS	Mean Casing Slowness	57 US/F
MTXG	Monopole Transmitter Geometry	186 IN
NWI2	Number Waveform Items 2	8
NWI4	Number Waveform Items 4	8
NWIX	Number Waveform Items X	0
RSMN	Label Shear/Compressional Minimum Ratio - Monopole P&S	1.4
RSMX	Label Shear/Compressional Maximum Ratio - Monopole P&S	2.12
RX1G	Receiver 1 Geometry	294 IN
RX2G	Receiver 2 Geometry	300 IN
RX3G	Receiver 3 Geometry	306 IN
RX4G	Receiver 4 Geometry	312 IN
RX5G	Receiver 5 Geometry	318 IN
RX6G	Receiver 6 Geometry	324 IN
RX7G	Receiver 7 Geometry	330 IN

RX7C	Receiver 7 Geometry	336	IN
RX8G	Receiver 8 Geometry	336	IN
SAM2	DSST Sonic Acquisition Mode 2 - Upper Dipole Mode	LFD_ODD	
SAM4	DSST Sonic Acquisition Mode 4 - High Frequency Monopole Mode for P&S	MFD_EVEN	
SAMX	DSST Sonic Acquisition Mode X - Both Dipoles or Monopole Mode for Expert	OFF	
SAS2	STC Sonic Array Status - Upper Dipole	255	
SAS4	STC Sonic Array Status - Monopole P&S	255	
SBO2	STC Search Band Offset - Upper Dipole	3000	US
SBO4	STC Search Band Offset - Monopole P&S	500	US
SBR4	STC Baseline Removal - Monopole P&S	ON	
SBW2	STC Search Bandwidth - Upper Dipole	8000	US
SBW4	STC Search Bandwidth - Monopole P&S	2000	US
SFC2	STC Formation Character - Upper Dipole	SELECTABLE	
SFC4	STC Formation Character - Monopole P&S	SELECTABLE	
SFM2	STC Filter - Upper Dipole	B.3-1.5K	
SFM4	STC Filter - Monopole P&S	B3-12K	
SHLL	Label Slowness Lower Limit - Monopole P&S Shear	75	US/F
SHUL	Label Slowness Upper Limit - Monopole P&S Shear	240	US/F
SLL2	STC Slowness Lower Limit - Upper Dipole	220	US/F
SLL4	STC Slowness Lower Limit - Monopole P&S	40	US/F
SST2	STC Slowness Step - Upper Dipole	4	US/F
SST4	STC Slowness Step - Monopole P&S	2	US/F
SSW2	STC Source Waveform - Upper Dipole	WF_SAM2	
SSW4	STC Source Waveform - Monopole P&S	WF_SAM4	
STLL	Label Slowness Lower Limit - Monopole Stoneley	220	US/F
STUL	Label Slowness Upper Limit - Monopole Stoneley	1600	US/F
SUL2	STC Slowness Upper Limit - Upper Dipole	1600	US/F
SUL4	STC Slowness Upper Limit - Monopole P&S	440	US/F
SWD2	STC Slowness Width - Upper Dipole	40	US/F
SWD4	STC Slowness Width - Monopole P&S	10	US/F
TBF2	STC Time for Baseline Fill - Upper Dipole	0	US
TBF4	STC Time for Baseline Fill - Monopole P&S	300	US
TLL2	STC Time Lower Limit - Upper Dipole	1420	US
TLL4	STC Time Lower Limit - Monopole P&S	150	US
TST2	STC Time Step - Upper Dipole	200	US
TST4	STC Time Step - Monopole P&S	50	US
TUL2	STC Time Upper Limit - Upper Dipole	20440	US
TUL4	STC Time Upper Limit - Monopole P&S	5110	US
TWD2	STC Time Width - Upper Dipole	2000	US
TWD4	STC Time Width - Monopole P&S	1000	US
TWI2	STC Integration Time Window - Upper Dipole	1600	US
TWI4	STC Integration Time Window - Monopole P&S	500	US
TWSX	Transmitter Waveform Select X	0	
UTXG	Upper Dipole Transmitter Geometry	162	IN
WFM4	Waveform Mode 4	W1	
BHS	SGT-N: Scintillation Gamma-Ray - N Borehole Status	OPEN	

Format: DSST_P_S_UPPER_VDL_COLOR Vertical Scale: 1:200 Graphics File Created: 22-Oct-2005 21:53

OP System Version: 12C0-301
MCM

DSST-B	12C0-301	SGT-N	12C0-301
DTC-H	12C0-301		

Output DLIS Files

DEFAULT	DSI_021LUP	FN:20	PRODUCER	22-Oct-2005 21:53
---------	------------	-------	----------	-------------------

Company:	Lamont Doherty	Schlumberger
Well:	IODP EXP 311 Site U1325C	
Field:	CAS-02C	
Country:	Canada	
Ocean:	Pacific	

Dipole Sonic