

Company: Lamont-Doherty Borehole Research

Well: IODP Expedition 311 CAS-03C
 Field: Cascadia Margin
 Rig: JOIDES Resolution State: Pacific Ocean

Rig: JOIDES Resolution
 Field: Cascadia Margin
 Location: Vancouver Island
 Well: IODP Expedition 311 CAS-03C
 Company: Lamont-Doherty Borehole Research

EcoScope Resistivity - Blended 1:1200 Measured Depth Recorded Mode Log

Total depth: 2139 m
 Spud date: 22-Sep-2005
 Runs: 1 To 1

Elevation: K.B. 10.06 m
 G.L. -1829 m
 D.F. 9.60 m

Permanent datum: MEAN SEA LEVEL
 Log measured from: Kelly Bushing
 Depth reference: Driller's Depth
 Elev.: 0 m
 10.06 m above Perm. datum

Service Order no. NAD 27 UTM Zone 10 N
 40012416
 Longitude W 127.05055
 Latitude N 48.62722

Depth logged: 1839 m To 2133 m
 Date logged: 22-Sep-05 To 23-Sep-05
 Mag decl: 18.83 deg.
 Mag dip: 69.14 deg.

Other services:
 geoVISION, sonicVISION, provision

Hole size	Bore hole record		Casing record	
	from	to	Size	Density
9.875 in.	1839 m	2139 m		
Type	Mud record from	to	Borehole deviation record	
Seawater	1839 m	2139 m	Min	Max
			from	to

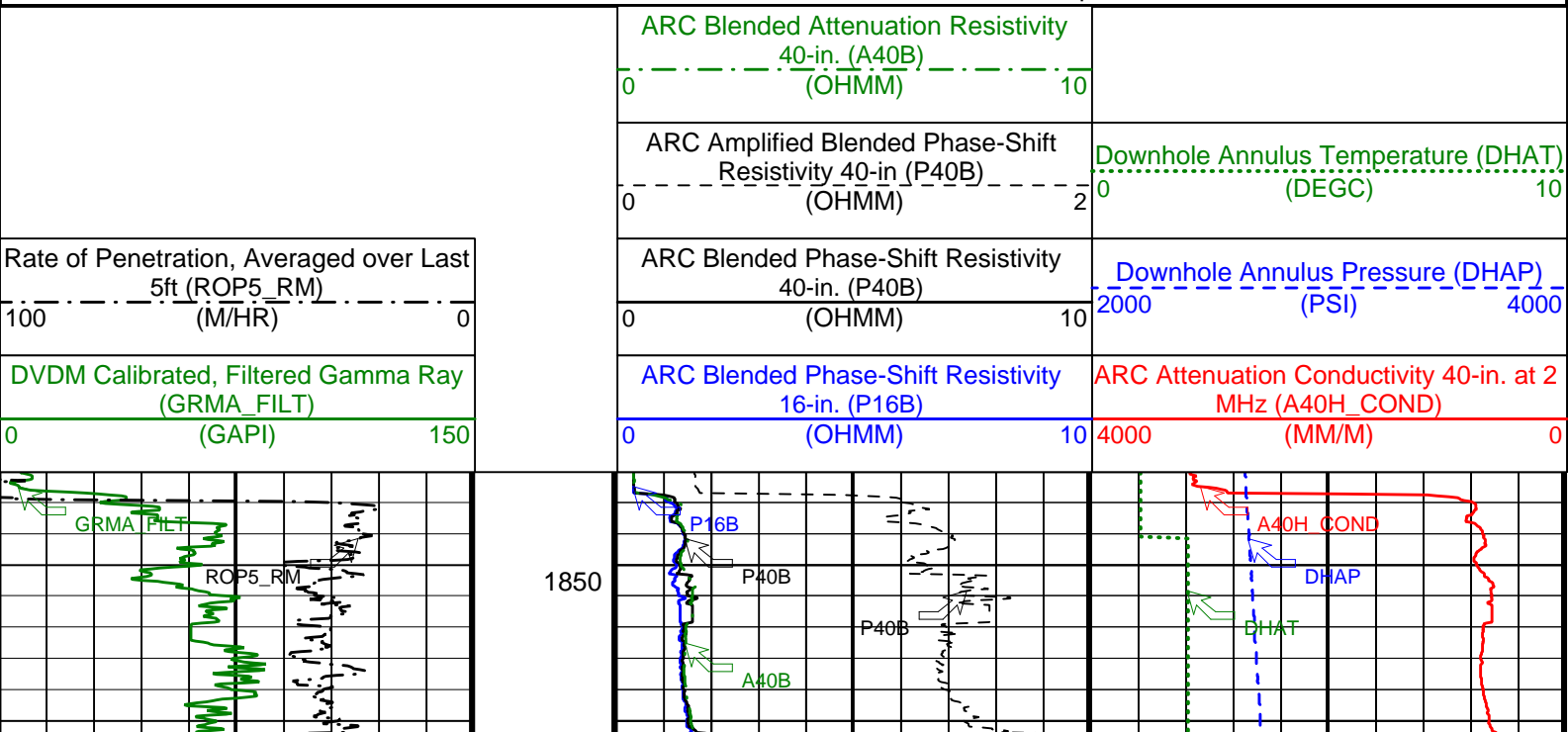
Unit	Surface equipment	Software record
Depth system	TWIS	IDEAL Wis
	Geolograph	SPM
		LWD
		MWD
		See Remarks
		9.0_C03

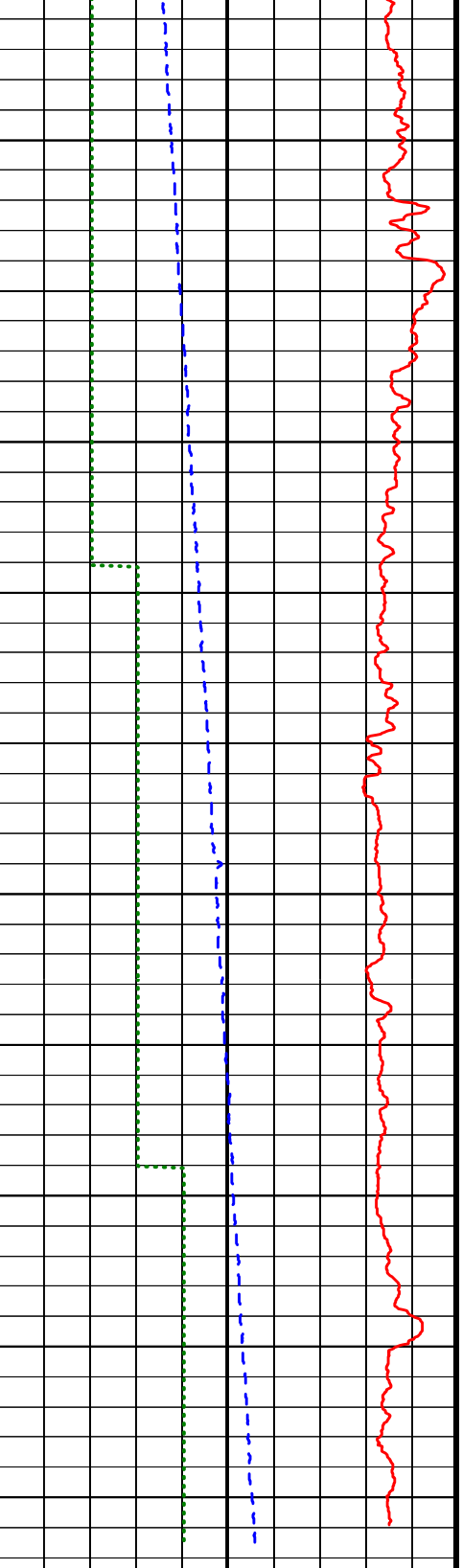
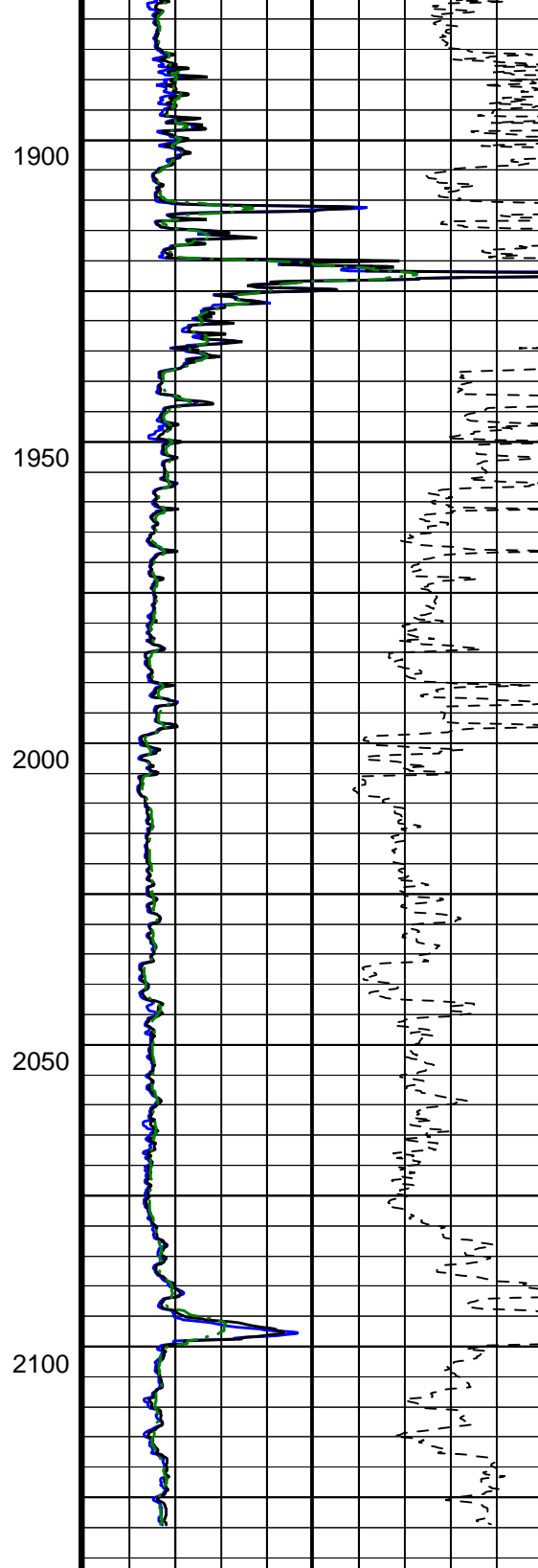
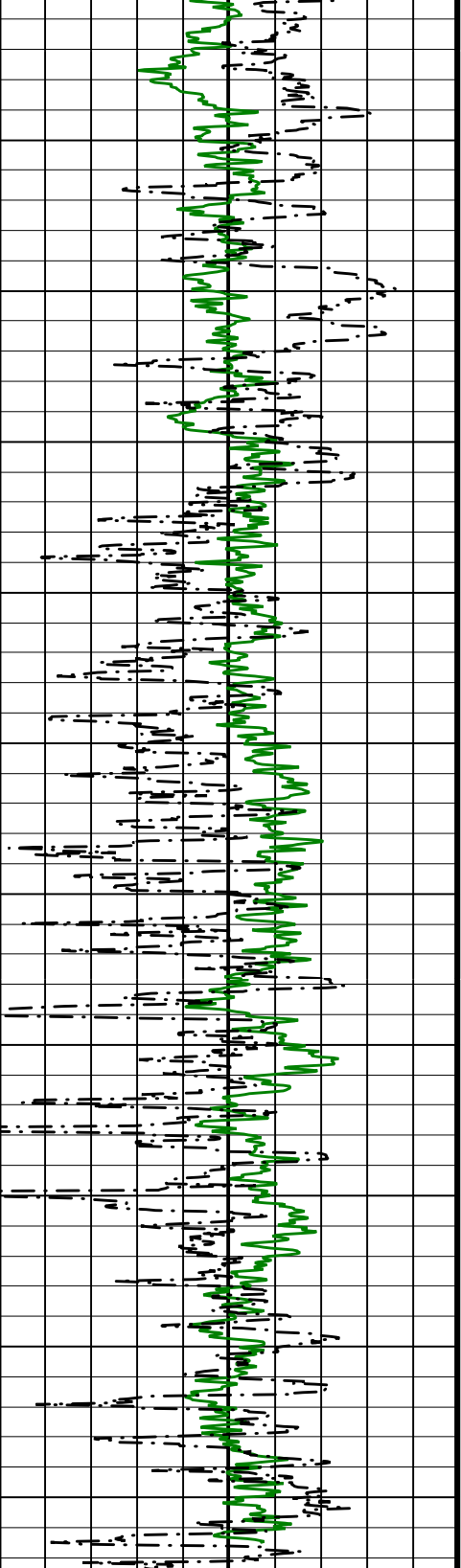
IDEAL Version: ID10_2B_08 IDF

Format: 1 MD ARC

Vertical Scale: 1:1200

Graphics File Created: 02-Oct-2005 00:14





DVDM Calibrated, Filtered Gamma Ray
(GRMA_FILT)
0 (GAPI) 150

Rate of Penetration, Averaged over Last
5ft (ROP5_RM)
100 (M/HR) 0

ARC Blended Phase-Shift Resistivity
16-in. (P16B)
0 (OHMM) 10

ARC Attenuation Conductivity 40-in. at 2
MHz (A40H_COND)
4000 (MM/M) 0

ARC Blended Phase-Shift Resistivity
40-in. (P40B)
0 (OHMM) 10

Downhole Annulus Pressure (DHAP)
2000 (PSI) 4000

ARC Amplified Blended Phase-Shift
Resistivity 40-in (P40B)
0 (OHMM) 2

Downhole Annulus Temperature (DHAT)
0 (DEGC) 10

ARC Blended Attenuation Resistivity
40-in. (A40B)
0 (OHMM) 10

ARC Blended Attenuation Resistivity
40-in. (A40B)
0 (OHMM) 10

Company: Lamont-Doherty Borehole Research

Schlumberger

Well: IODP Expedition 311 CAS-03C

Field: Cascadia Margin

Rig: JOIDES Resolution

State: Pacific Ocean

EcoScope Resistivity - Blended
1:1200 Measured Depth
Recorded Mode Log