



Collar Rotational Speed (CRPM) (RPM) 0 200	Photoelectric Factor, Up (PEU) 0 (----) 10	Photoelectric Factor, Right (PER) 0 (----) 10	Absent 0.256 0.598 0.939 1.280 1.622 1.963 2.305 2.646 2.988 3.329  ADN Photoelectric Factor (16-Sector) Image Oriented Top of Hole (U,R,B,L,U) (PESI) (----)	Absent 1.263 1.398 1.523 1.653 1.784 1.914 2.044 2.174 2.305 2.435  Bulk Density (16-Sector) Image Oriented Top of Hole (U,R,B,L,U) (ROSI) (G/C3)	Bulk Density, Up (ROBU) (G/C3) 1 2.65	Bulk Density, Right (ROBR) (G/C3) 1 2.65
DVDM Calibrated, Filtered Gamma Ray (GRMA_FILT) (GAPI) 0 150	Photoelectric Factor, Bottom (PEB) 0 (----) 10	Photoelectric Factor, Left (PEL) 0 (----) 10			Bulk Density, Bottom (ROBB) (G/C3) 1 2.65	Bulk Density, Left (ROBL) (G/C3) 1 2.65

IDEAL Version: ID10_2B_08
IDF

Density Dynamic Image

IDEAL Version: ID10_2B_08
IDF

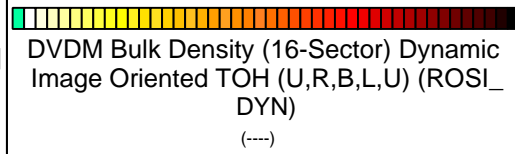
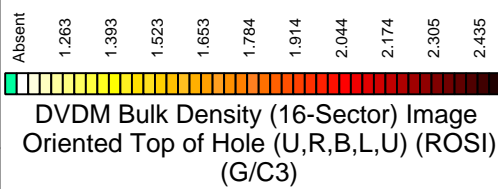
Format: 5 MD VDN DYNAMIC IMAGE

Vertical Scale: 1:240

Graphics File Created: 02-Oct-2005 00:07

DVDM
Calibrated,
Filtered
Gamma
Ray
(GRMA_
FILT)
(GAPI)
0 150

Collar
Rotational
Speed
(CRPM)
(RPM)
0 200

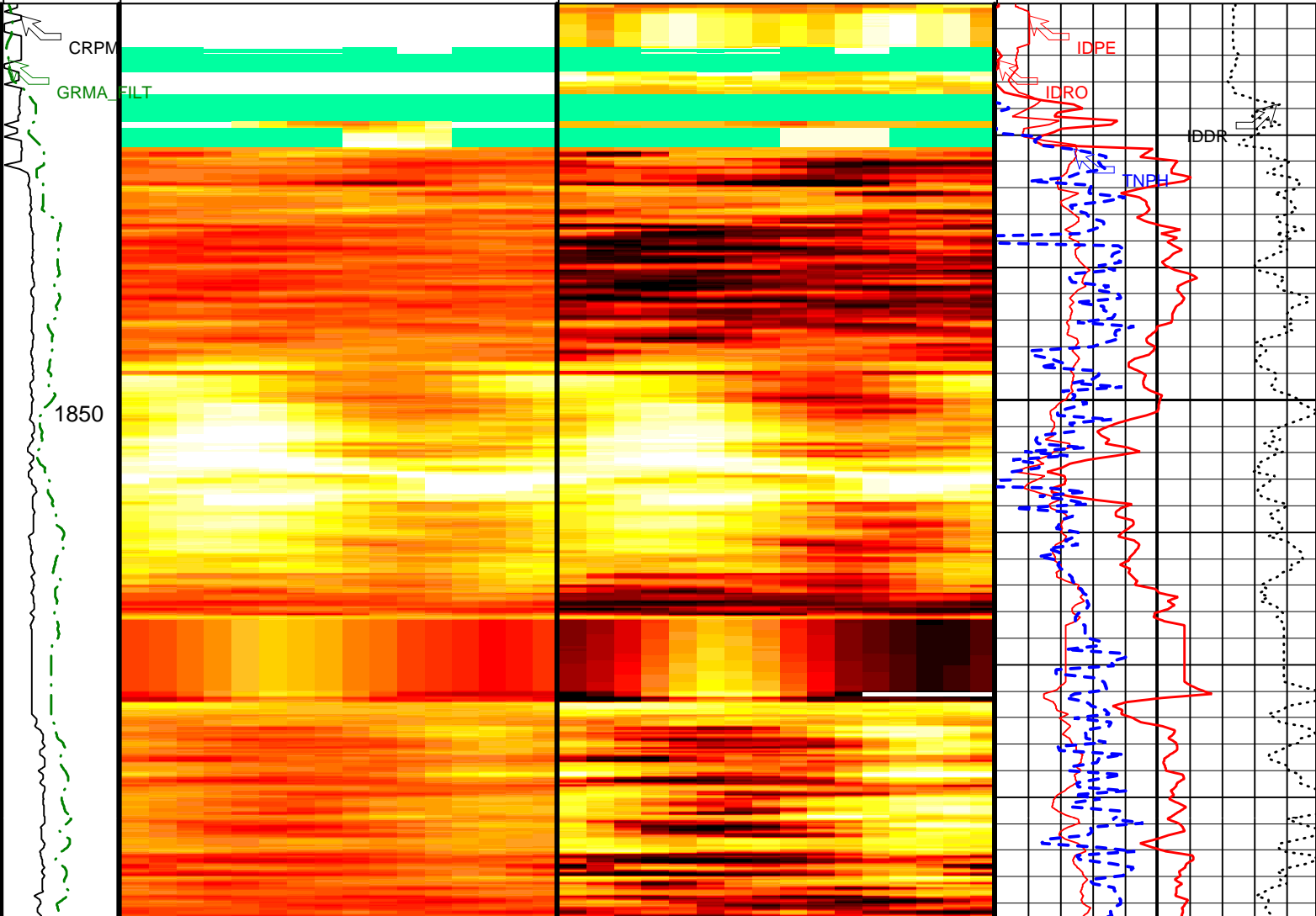


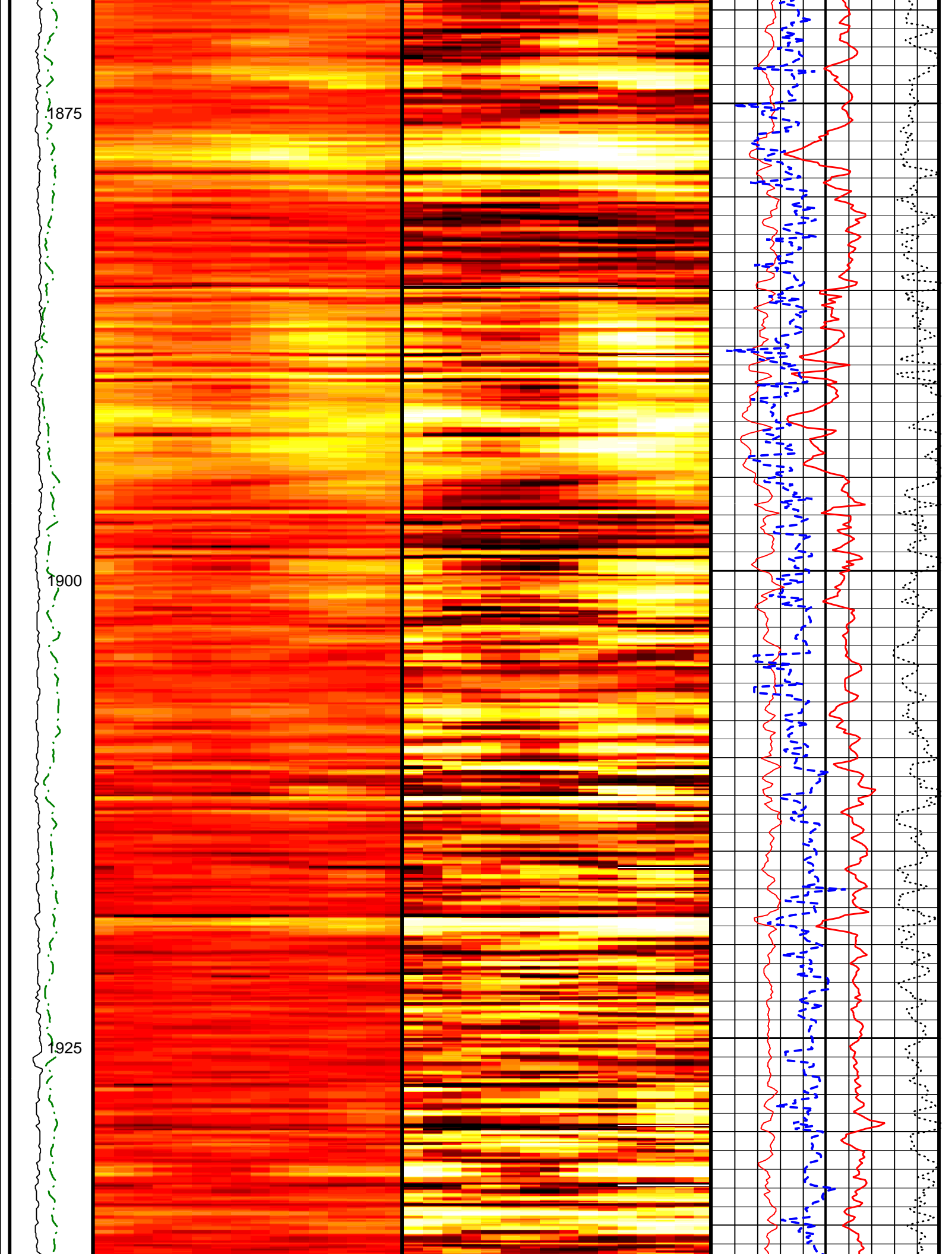
Thermal Neutron porosity
(TNPH)
(PU) 100 0

Image Derived Density
Correction (IDDR)
(G/C3) -0.8 0.2

Image Derived Density (IDRO)
(G/C3) 1 2.65

Image Derived Photoelectric
Factor (IDPE)
(----) 0 10

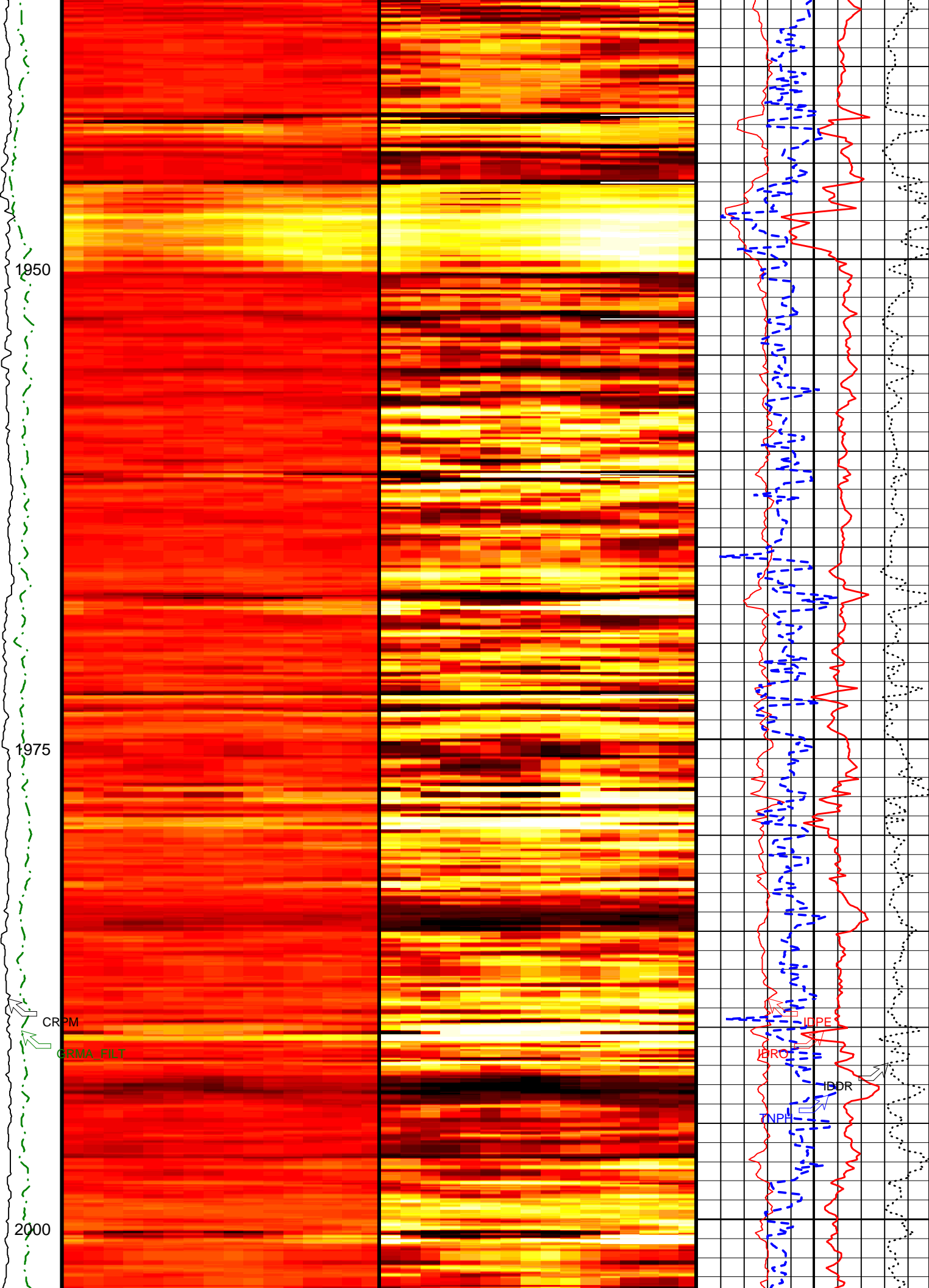


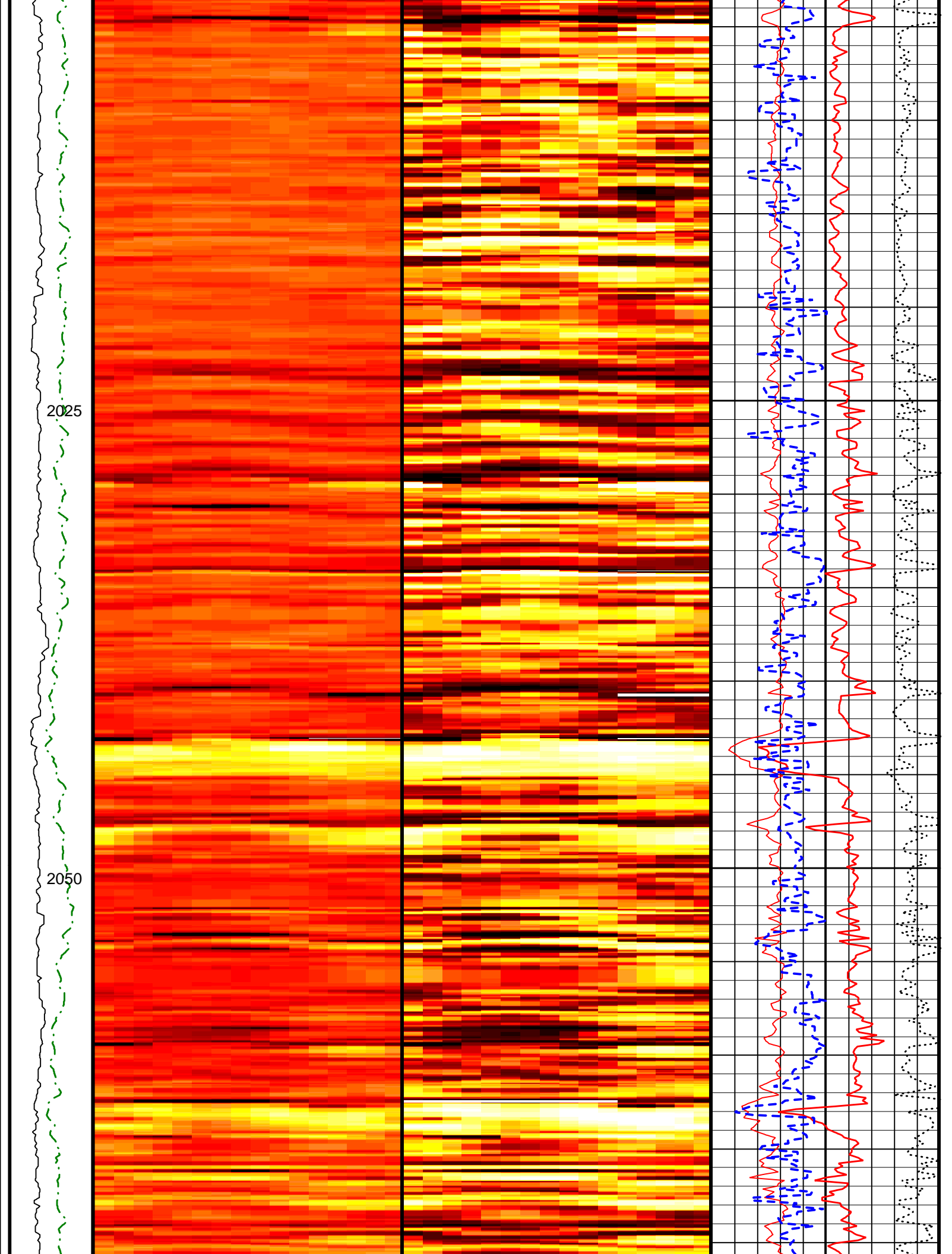


1875

1900

1925





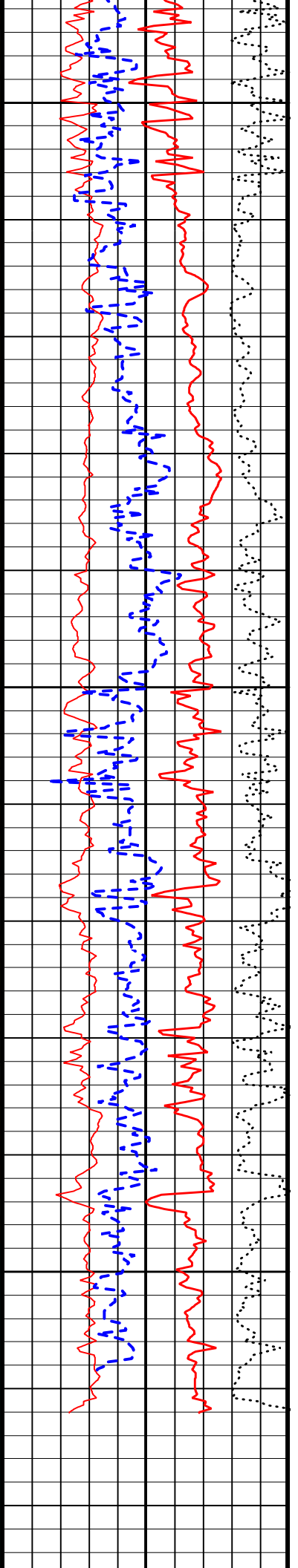
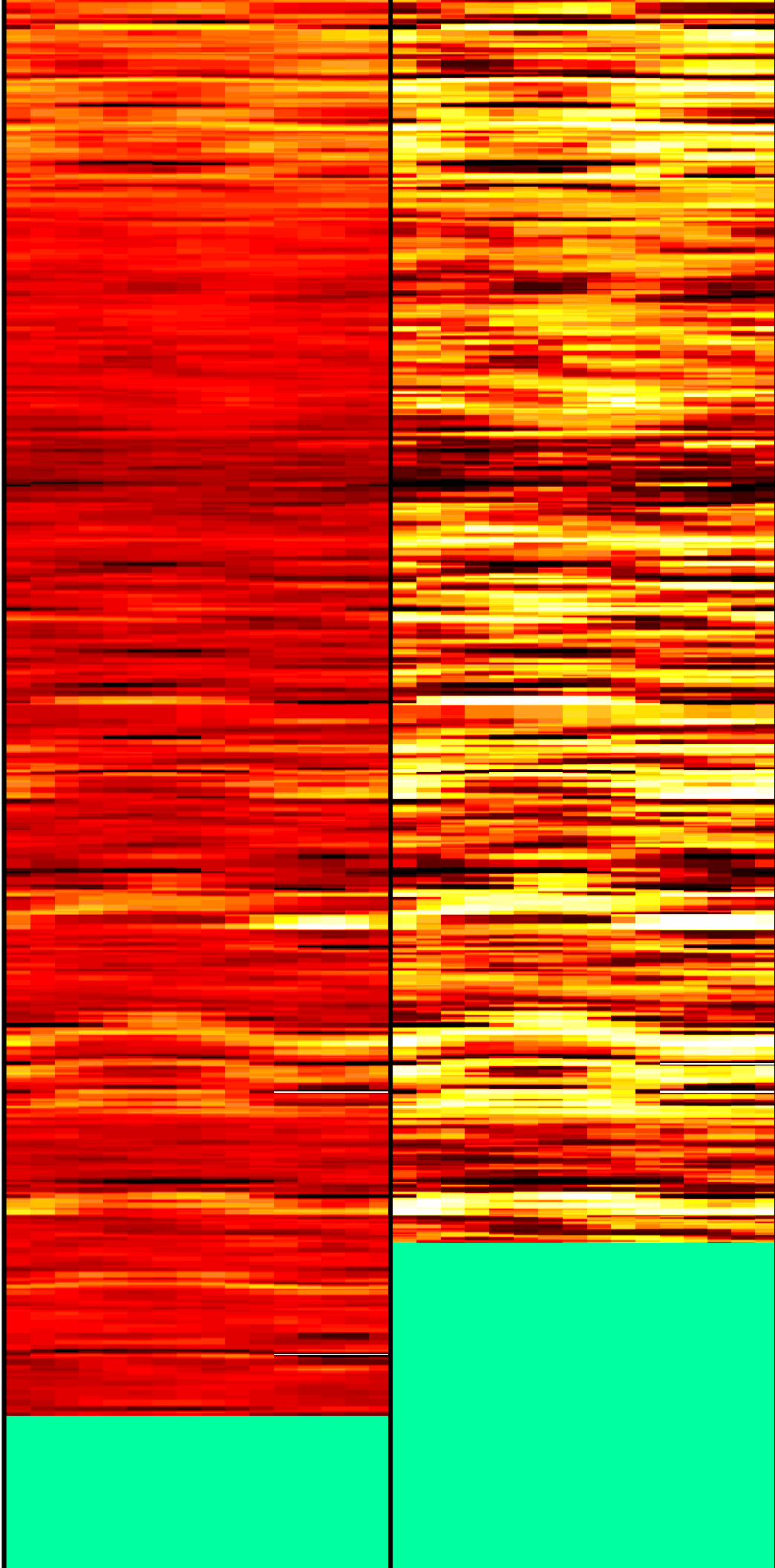
2025


2050

2075

2100

2125



Collar Rotational Speed (CRPM) (RPM)	Absent 1.263 1.393 1.523 1.653 1.784 1.914 2.044 2.174 2.305 2.435 DVDM Bulk Density (16-Sector) Image Oriented Top of Hole (U,R,B,L,U) (ROSI) (G/C3)	 DVDM Bulk Density (16-Sector) Dynamic Image Oriented TOH (U,R,B,L,U) (ROSI_DYN) (----)	Image Derived Photoelectric Factor (IDPE) 0 (----) 10
DVDM Calibrated, Filtered Gamma Ray (GRMA_FILT) (GAPI)			Image Derived Density (IDRO) 1 (G/C3) 2.65
			Image Derived Density Correction (IDDR) -0.8 (G/C3) 0.2
			Thermal Neutron porosity (TNPH) (PU) 100 (PU) 0
IDEAL Version: ID10_2B_08 IDF			

Company: Lamont-Doherty Borehole Research	Schlumberger
Well: IODP Expedition 311 CAS-03C	
Field: Cascadia Margin	
Rig: JOIDES Resolution	
State: Pacific Ocean	
EcoScope Density Neutron - Image 1:240 Measured Depth Recorded Mode Log	