



DISCLAIMER

THE USE OF AND RELIANCE UPON THIS RECORDED-DATA BY THE HEREIN NAMED COMPANY (AND ANY OF ITS AFFILIATES, PARTNERS, REPRESENTATIVES, AGENTS, CONSULTANTS AND EMPLOYEES) IS SUBJECT TO THE TERMS AND CONDITIONS AGREED UPON BETWEEN SCHLUMBERGER AND THE COMPANY, INCLUDING: (a) RESTRICTIONS ON USE OF THE RECORDED-DATA; (b) DISCLAIMERS AND WAIVERS OF WARRANTIES AND REPRESENTATIONS REGARDING COMPANY'S USE OF AND RELIANCE UPON THE RECORDED-DATA; AND (c) CUSTOMER'S FULL AND SOLE RESPONSIBILITY FOR ANY INFERENCE DRAWN OR DECISION MADE IN CONNECTION WITH THE USE OF THIS RECORDED-DATA.

OTHER SERVICES1

OS1: none  
OS2:  
OS3:  
OS4:  
OS5:

OTHER SERVICES2

OS1:  
OS2:  
OS3:  
OS4:  
OS5:

REMARKS: RUN NUMBER 1

Hole drilled with APC/XCB.  
All depths in Meters Below Rig Floor (MBRF).  
Hole flushed with Sepiolite/Barite mud.  
Sea Floor Driller 1839.6 MBRF.  
Sea Floor Logger- 1837 MBRF.  
Total Depth Driller- 2139.6 MBRF  
Total Depth Logger- 2138 MBRF  
Casing Bottom Driller- 1896.8 MBRF.  
Casing Bottom Logger- 1896 MBRF  
Heave was 2-4 meters.  
No calipers run due to heave

REMARKS: RUN NUMBER 2


RUN 1  
SERVICE ORDER #:  
PROGRAM VERSION: 12C0-301  
FLUID LEVEL:

RUN 2  
SERVICE ORDER #:  
PROGRAM VERSION:  
FLUID LEVEL:

LOGGED INTERVAL	START	STOP	LOGGED INTERVAL	START	STOP

EQUIPMENT DESCRIPTION

RUN 1	RUN 2
<b>SURFACE EQUIPMENT</b>	
GSR-U/Y 166 WITM (DTS)-A	

DOWNHOLE EQUIPMENT			
LEH-QT		34.17	
LEH-QT 1726			
DTC-H	CTEM	33.01	
ECH-KC	TelStatus	33.28	
	ToolStatu	32.37	
SGT-N	Gamma Ray	32.09	32.37
SGH-K 2450			

SGC-TB 9585

AH-MCD  
AH-MCD

30.69

DSST-B  
SPAC-B 16  
ECH-SD 16  
SMDR-BD 8232  
SSIJ-BA 8192  
SMDX-AA 66

28.57

PWF 13.02

AH-MCD  
AH-MCD

13.02

DTA-A  
ECH-KE

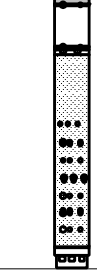
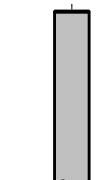
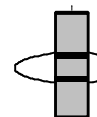
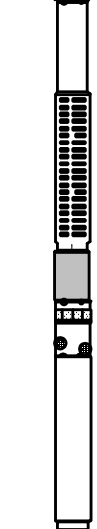
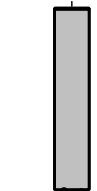
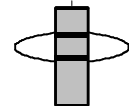
10.74

DIT-E  
DIC-EB 438  
MIH-ZA  
DIS-HB 442

9.52

SP 3.15  
 Deep Ind 2.90  
 Aux Meas SFL 1.98  
 Med Ind 1.83  
 Status HV DF  
 Tension 0.00  
 TOOL ZERO

MAXIMUM STRING DIAMETER 4.50 IN  
 MEASUREMENTS RELATIVE TO TOOL ZERO  
 ALL LENGTHS IN METERS



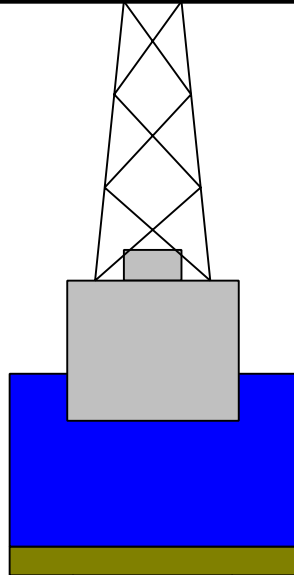
Production String	(in)	(m)	Well Schematic	(m)	(in)	Casing String
	OD	ID		MD	OD	

Kelly Bushing Elevation  
Derrick Floor Elevation

11.3  
11.0

Mean Sea Level

0.0



0.0 5.500

Casing String



1898.8 9.875

Borehole Segment  
Casing String

2139.6 9.875

Borehole Segment Bottom

**Schlumberger**

Pass #1

MAXIS Field Log

Output DLIS Files

DEFAULT PI\_DSI\_008LUP FN:7 PRODUCER 27-Oct-2005 00:34 2139.5 M 1903.0 M

OP System Version: 12C0-301  
MCM

DIT-E	12C0-301	DTA-A	12C0-301
DSST-B	12C0-301	SGT-N	12C0-301
DTC-H	12C0-301		

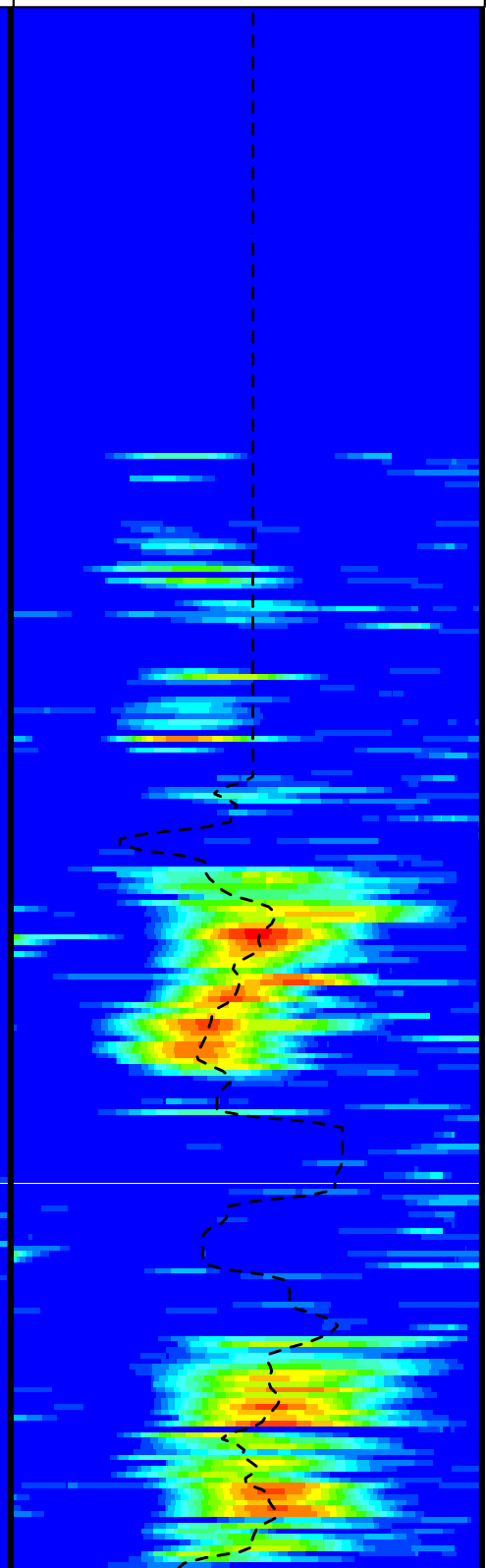
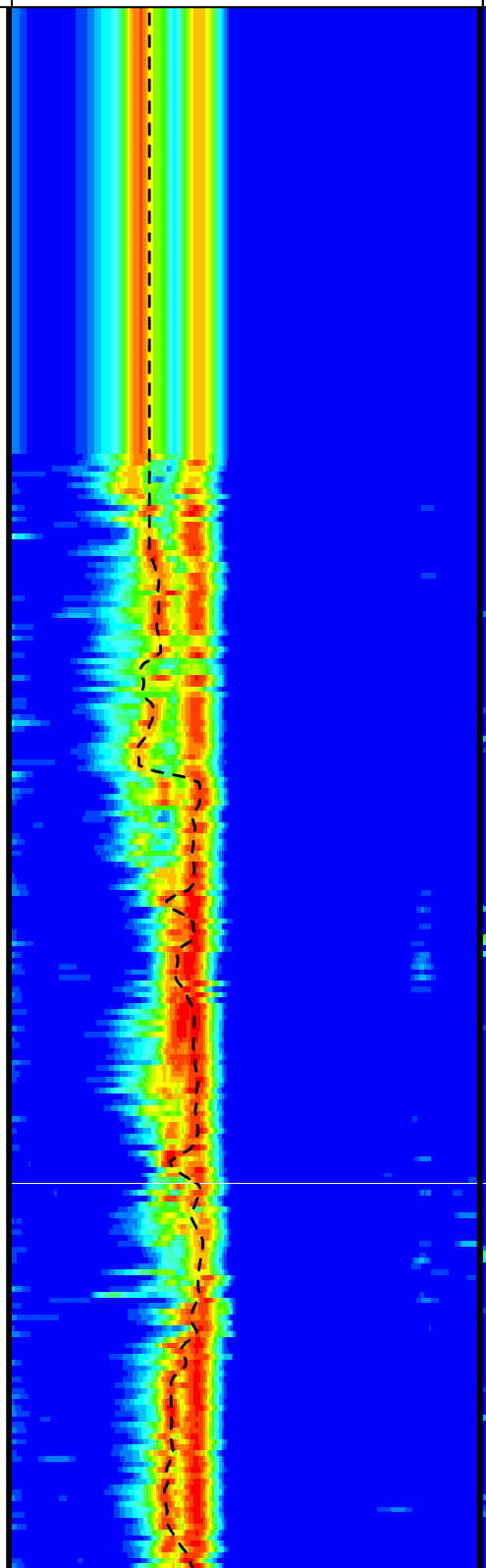
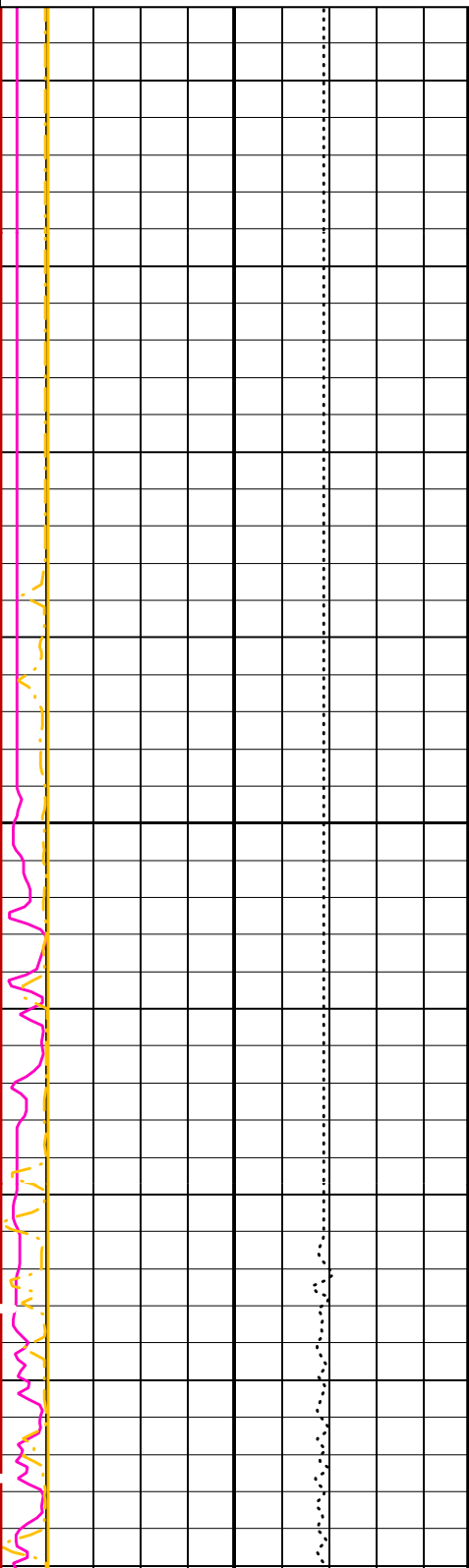
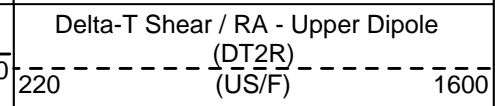
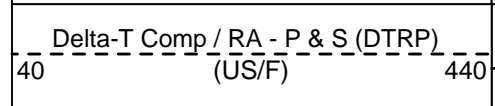
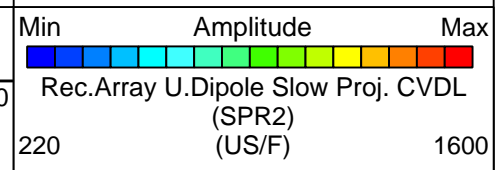
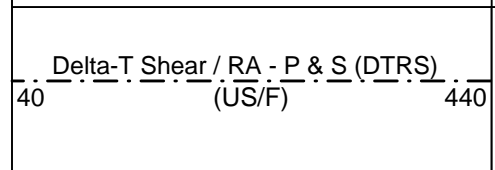
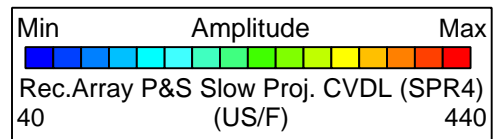
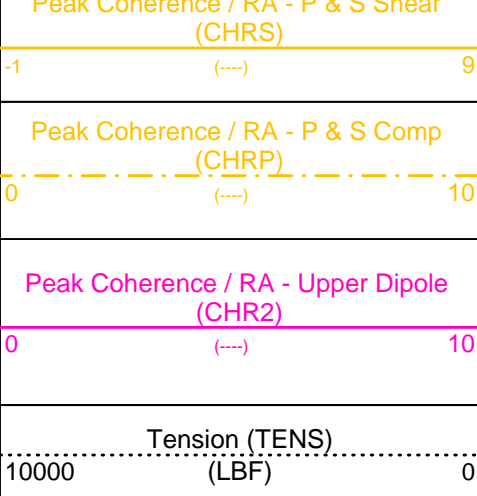
PIP SUMMARY

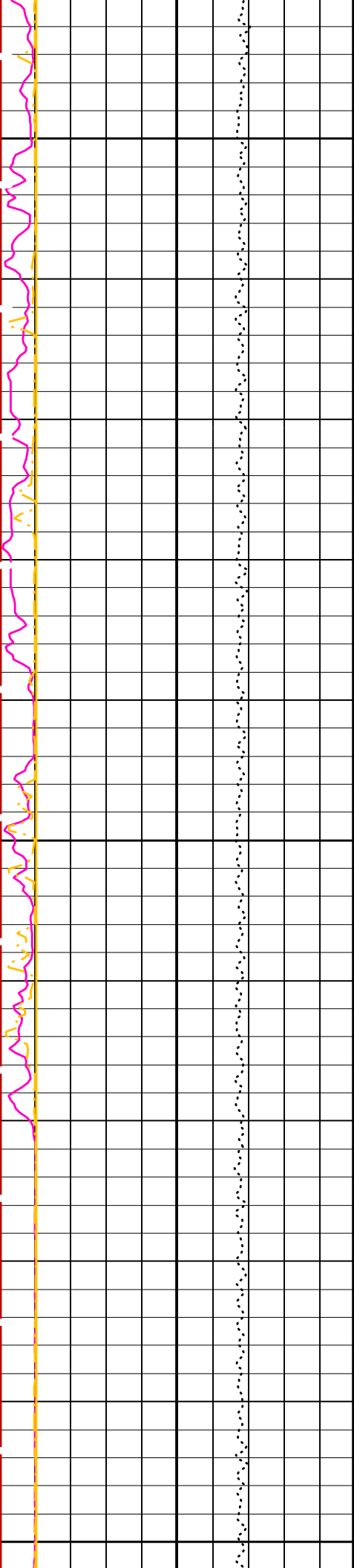
Time Mark Every 60 S

Waveform Data Copy Indicator 4 -  
Monopole P&S (WCI4)

0 (---) 10

Peak Coherence (PA, P & S Shear

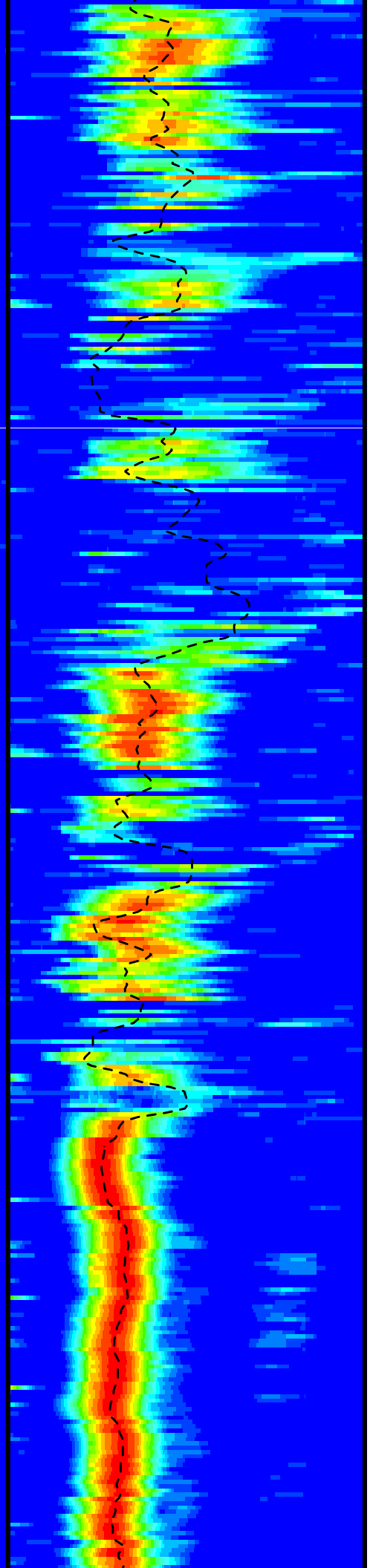
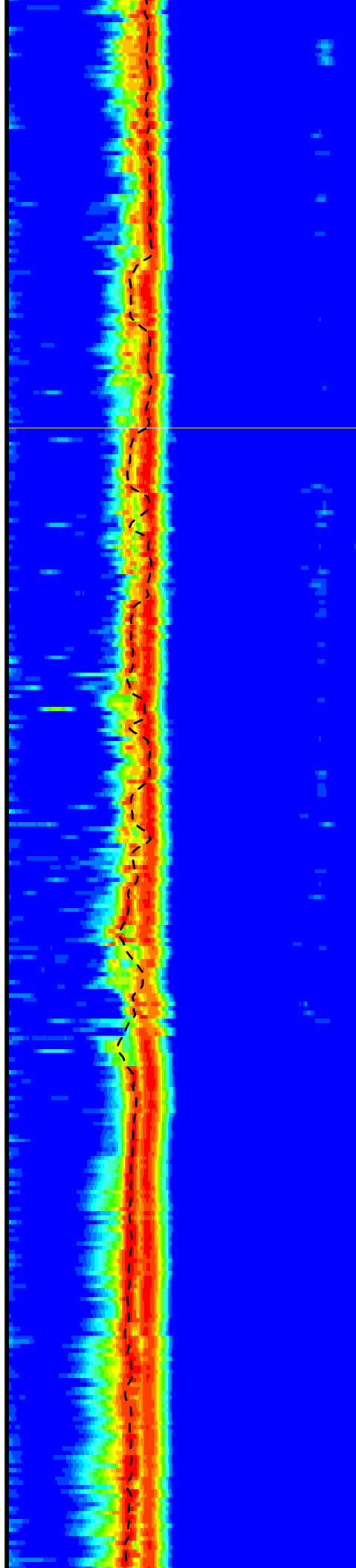


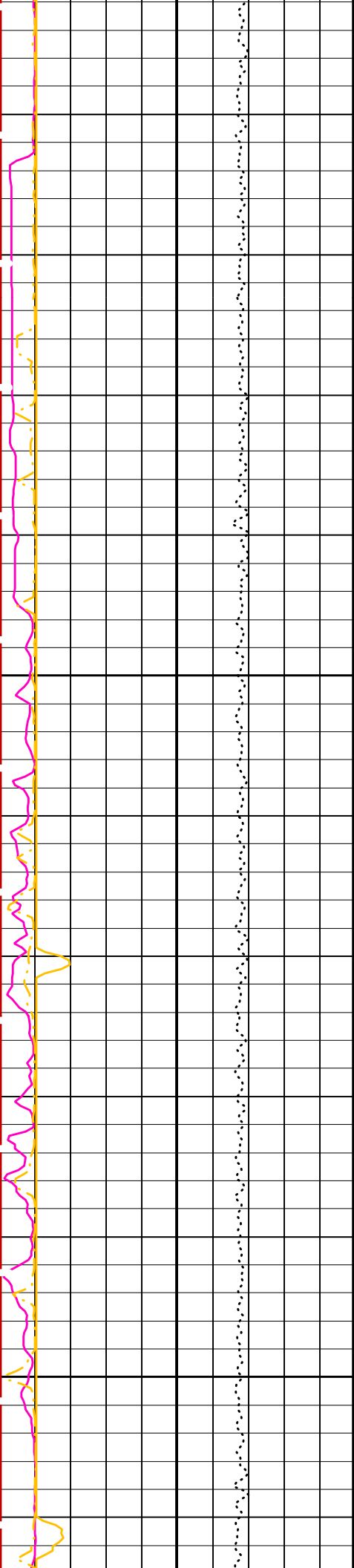


1950

1975

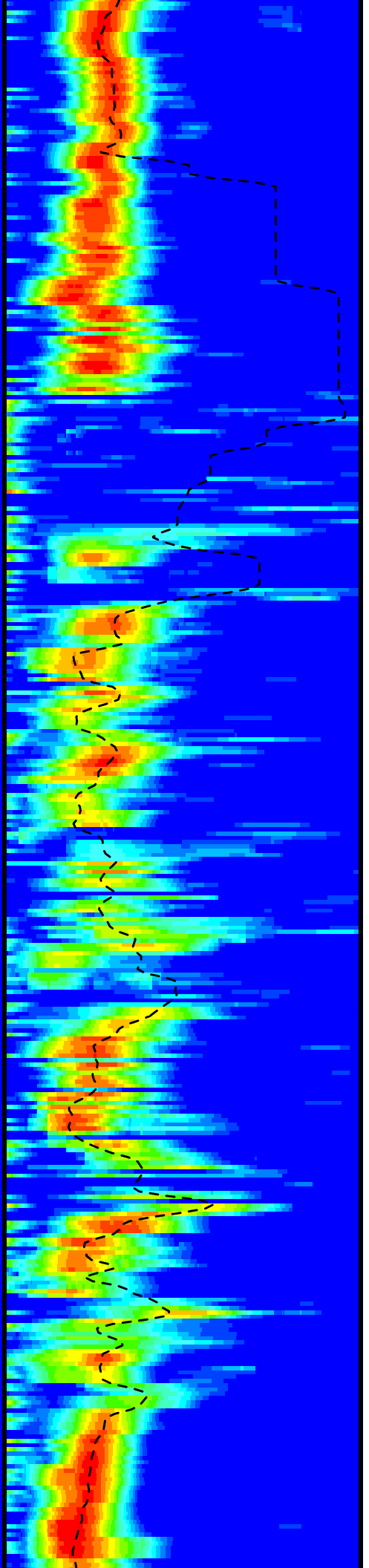
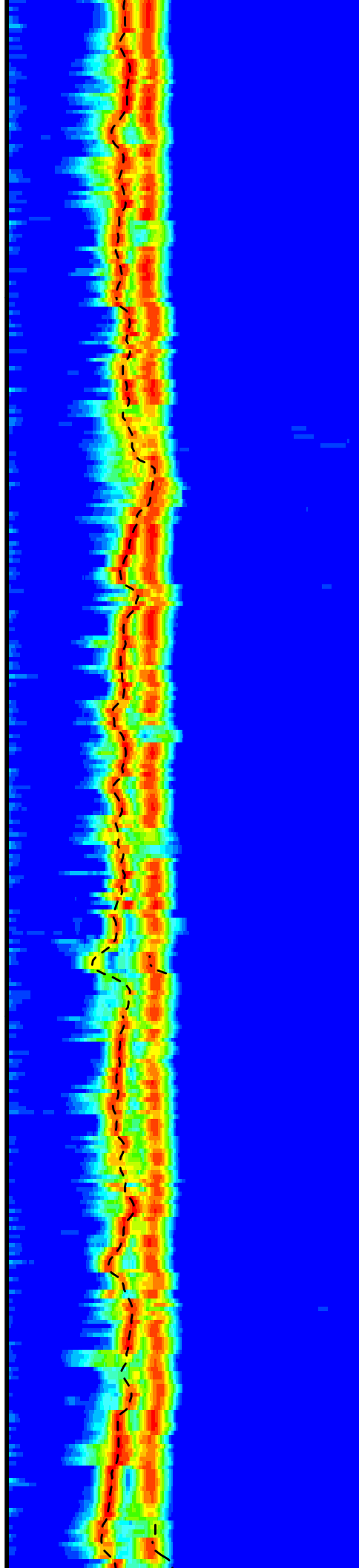
2000



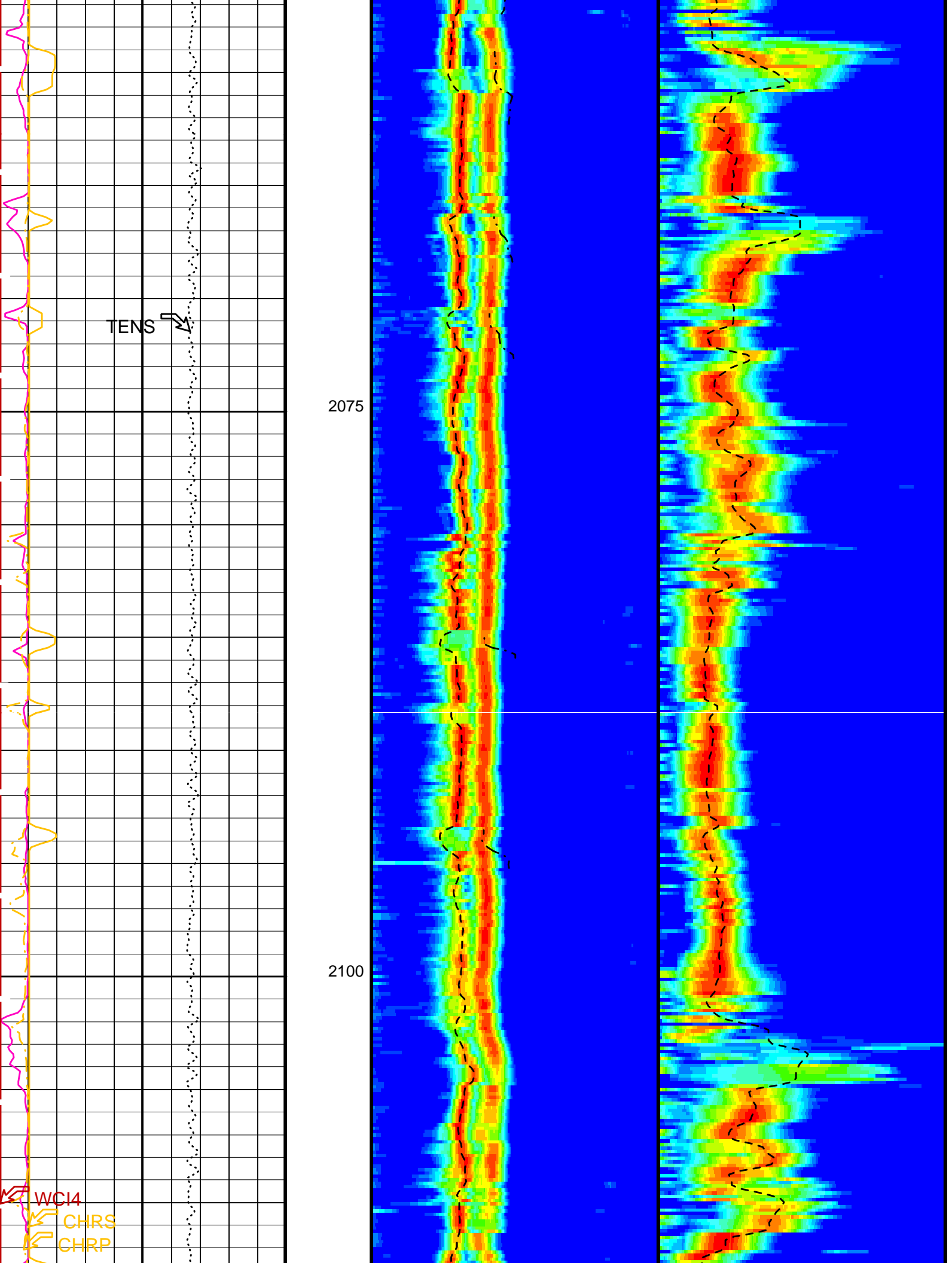


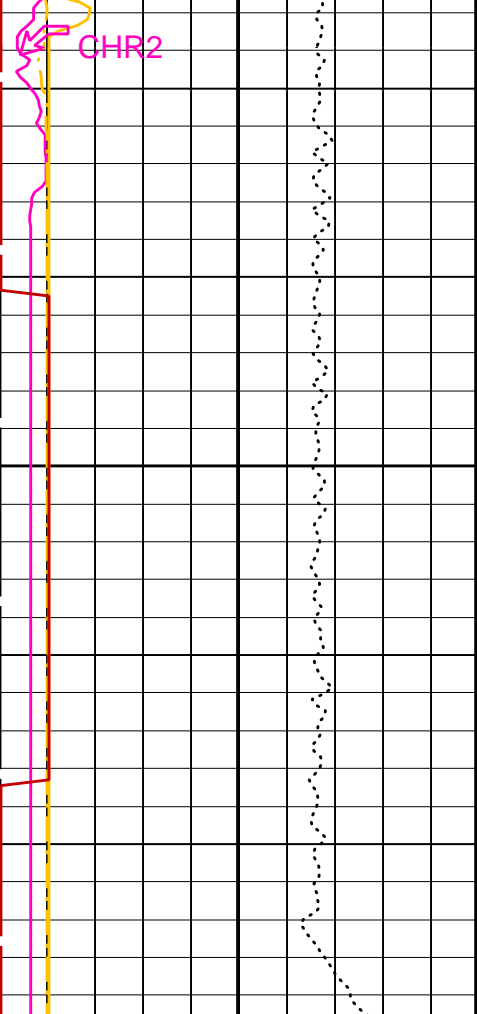
2025

2050

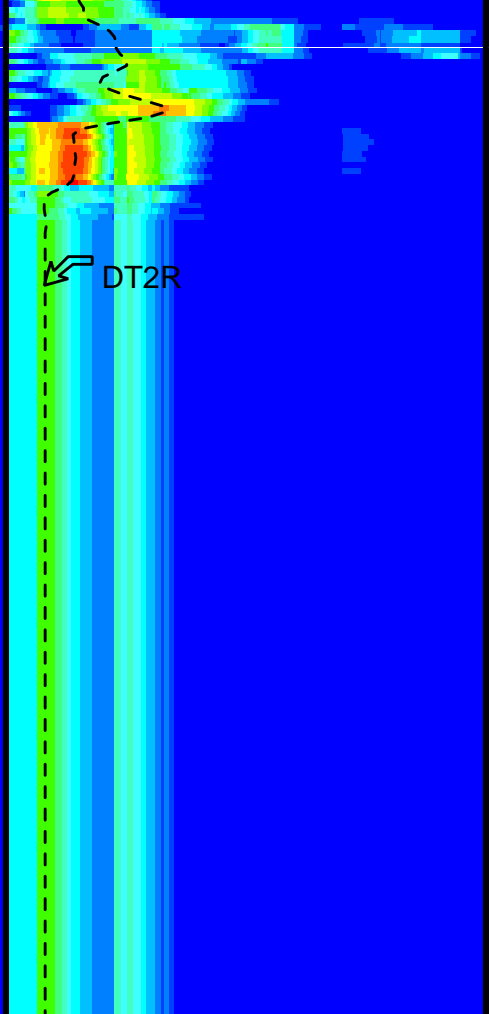
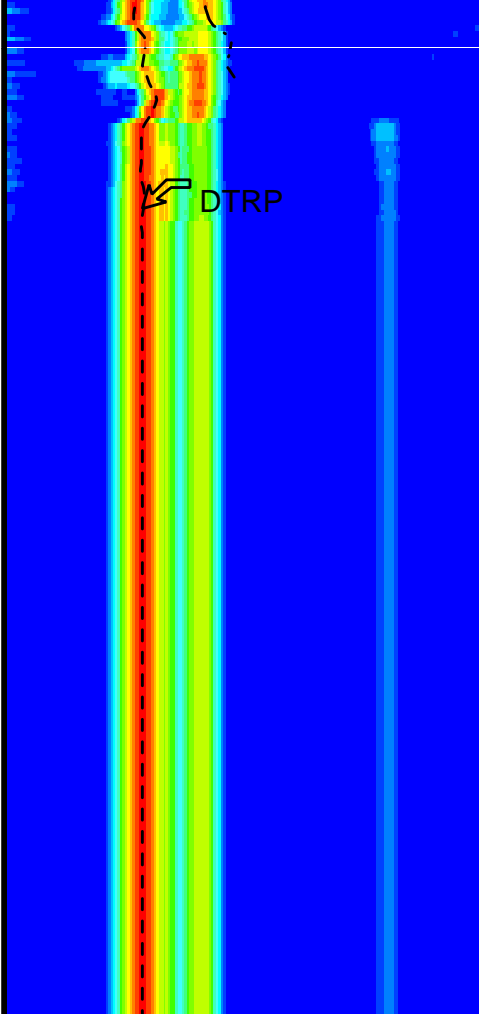








2125



Tension (TENS) (LBF)	10000	0
Peak Coherence / RA - Upper Dipole (CHR2)	0	10
Peak Coherence / RA - P & S Comp (CHRP)	0	10
Peak Coherence / RA - P & S Shear (CHRS)	-1	9
Waveform Data Copy Indicator 4 - Monopole P&S (WCI4)	0	10

Delta-T Comp / RA - P & S (DTRP)	40	440
Delta-T Shear / RA - P & S (DTRS)	40	440
Min	Amplitude	Max
40	Rec.Array P&S Slow Proj. CVDL (SPR4)	440

Delta-T Shear / RA - Upper Dipole (DT2R)	220	1600
Min	Amplitude	Max
220	Rec.Array U.Dipole Slow Proj. CVDL (SPR2)	1600

PIP SUMMARY

Time Mark Every 60 S

Parameters

DLIS Name	Description	Value
BHS	DIT-E: Dual Induction - E Borehole Status	OPEN
BHS	DSST-B: Dipole Shear Imager - B Borehole Status	OPEN
CASF	Label Casing Function - Monopole P&S	50
COLL	Label Slowness Lower Limit - Monopole P&S Compressional	40 US/F
COUL	Label Slowness Upper Limit - Monopole P&S Compressional	240 US/F
DDE2	Digitizing Delay 2	0 US
DDE4	Digitizing Delay 4	0 US

DDEX	Digitizing Delay X	0	US
DLCS	Label Compressional Source - Dipole Shear	USE	
DSHL	Label Slowness Lower Limit - Dipole Shear	220	US/F
DSHU	Label Slowness Upper Limit - Dipole Shear	1600	US/F
DSI2	Digitizer Sample Interval 2	40	US
DSI4	Digitizer Sample Interval 4	10	US
DSIX	Digitizer Sample Interval X	40	US
DTC5	Compressional Delta-T Source for DTCO Channel	PS_COMP	
DTF	Delta-T Fluid	189	US/F
DWC2	Digitizer Word Count 2	512	
DWC4	Digitizer Word Count 4	512	
DWCX	Digitizer Word Count X	512	
FILG	Label Fill Gap Control - Monopole P&S	COMP_SHEAR	
LFC	Label Formation Character - Monopole P&S	DYNAMIC	
MCS	Mean Casing Slowness	57	US/F
MTXG	Monopole Transmitter Geometry	186	IN
NWI2	Number Waveform Items 2	8	
NWI4	Number Waveform Items 4	8	
NWIX	Number Waveform Items X	0	
RSMN	Label Shear/Compressional Minimum Ratio - Monopole P&S	1.4	
RSMX	Label Shear/Compressional Maximum Ratio - Monopole P&S	2.12	
RX1G	Receiver 1 Geometry	294	IN
RX2G	Receiver 2 Geometry	300	IN
RX3G	Receiver 3 Geometry	306	IN
RX4G	Receiver 4 Geometry	312	IN
RX5G	Receiver 5 Geometry	318	IN
RX6G	Receiver 6 Geometry	324	IN
RX7G	Receiver 7 Geometry	330	IN
RX8G	Receiver 8 Geometry	336	IN
SAM2	DSST Sonic Acquisition Mode 2 - Upper Dipole Mode	LFD_ODD	
SAM4	DSST Sonic Acquisition Mode 4 - High Frequency Monopole Mode for P&S	MFD_EVEN	
SAMX	DSST Sonic Acquisition Mode X - Both Dipoles or Monopole Mode for Expert	OFF	
SAS2	STC Sonic Array Status - Upper Dipole	255	
SAS4	STC Sonic Array Status - Monopole P&S	255	
SBO2	STC Search Band Offset - Upper Dipole	3000	US
SBO4	STC Search Band Offset - Monopole P&S	500	US
SBR4	STC Baseline Removal - Monopole P&S	ON	
SBW2	STC Search Bandwidth - Upper Dipole	800	US
SBW4	STC Search Bandwidth - Monopole P&S	2000	US
SFC2	STC Formation Character - Upper Dipole	SELECTABLE	
SFC4	STC Formation Character - Monopole P&S	SELECTABLE	
SFM2	STC Filter - Upper Dipole	B.3-1.5K	
SFM4	STC Filter - Monopole P&S	B3-12K	
SHLL	Label Slowness Lower Limit - Monopole P&S Shear	75	US/F
SHUL	Label Slowness Upper Limit - Monopole P&S Shear	240	US/F
SLL2	STC Slowness Lower Limit - Upper Dipole	220	US/F
SLL4	STC Slowness Lower Limit - Monopole P&S	40	US/F
SST2	STC Slowness Step - Upper Dipole	4	US/F
SST4	STC Slowness Step - Monopole P&S	2	US/F
SSW2	STC Source Waveform - Upper Dipole	WF_SAM2	
SSW4	STC Source Waveform - Monopole P&S	WF_SAM4	
STLL	Label Slowness Lower Limit - Monopole Stoneley	220	US/F
STUL	Label Slowness Upper Limit - Monopole Stoneley	1600	US/F
SUL2	STC Slowness Upper Limit - Upper Dipole	1600	US/F
SUL4	STC Slowness Upper Limit - Monopole P&S	440	US/F
SWD2	STC Slowness Width - Upper Dipole	40	US/F
SWD4	STC Slowness Width - Monopole P&S	10	US/F
TBF2	STC Time for Baseline Fill - Upper Dipole	0	US
TBF4	STC Time for Baseline Fill - Monopole P&S	300	US
TLL2	STC Time Lower Limit - Upper Dipole	1420	US
TLL4	STC Time Lower Limit - Monopole P&S	150	US
TST2	STC Time Step - Upper Dipole	200	US
TST4	STC Time Step - Monopole P&S	50	US
TUL2	STC Time Upper Limit - Upper Dipole	20440	US
TUL4	STC Time Upper Limit - Monopole P&S	5110	US
TWD2	STC Time Width - Upper Dipole	2000	US
TWD4	STC Time Width - Monopole P&S	1000	US
TWI2	STC Integration Time Window - Upper Dipole	1600	US
TWI4	STC Integration Time Window - Monopole P&S	500	US
TWSX	Transmitter Waveform Select X	0	
UTXG	Upper Dipole Transmitter Geometry	162	IN
WFM4	Waveform Mode 4	W1	
BHS	SGT-N: Scintillation Gamma-Ray - N Borehole Status	OPEN	

Format: DSST\_P\_S\_UPPER\_VDL\_COLOR      Vertical Scale: 1:200      Graphics File Created: 27-Oct-2005 00:34

## OP System Version: 12C0-301

MCM

DIT-E	12C0-301	DTA-A	12C0-301
DSST-B	12C0-301	SGT-N	12C0-301

# Output DLIS Files

DEFAULT PI\_DSI\_008LUP FN:7 PRODUCER 27-Oct-2005 00:34

# Output DLIS Files

DEFAULT PI\_DSI\_008LUP FN:7 PRODUCER 27-Oct-2005 00:34 2139.5 M 1903.0 M

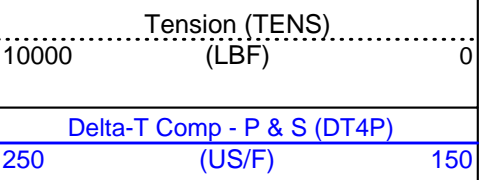
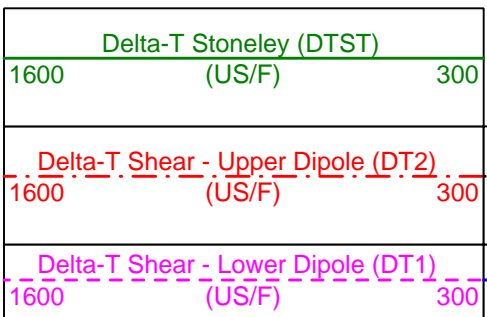
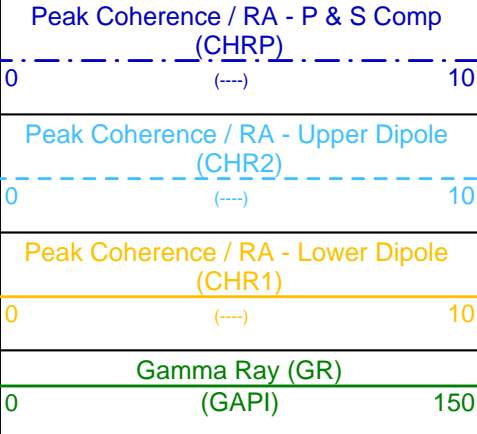
## OP System Version: 12C0-301

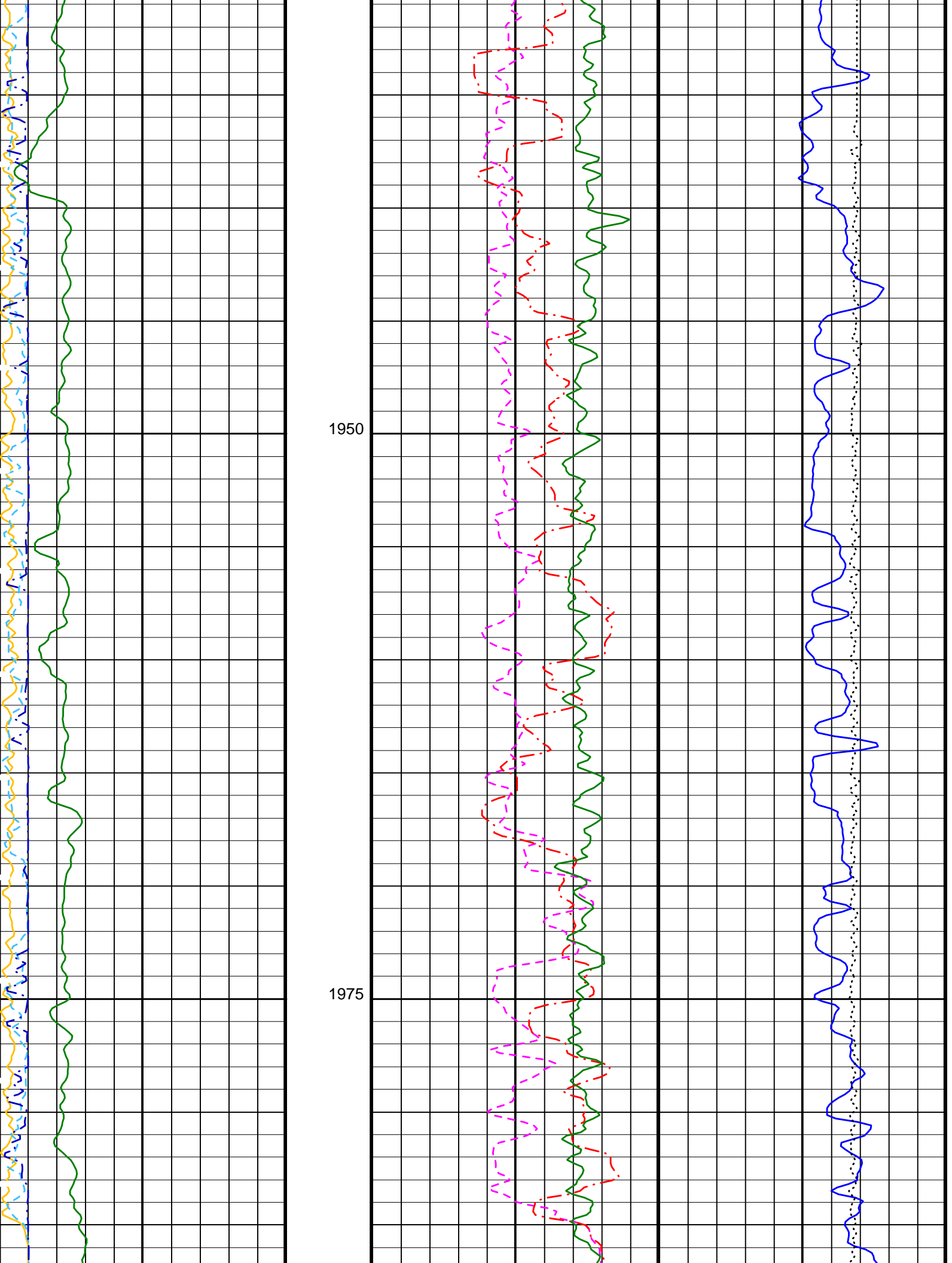
MCM

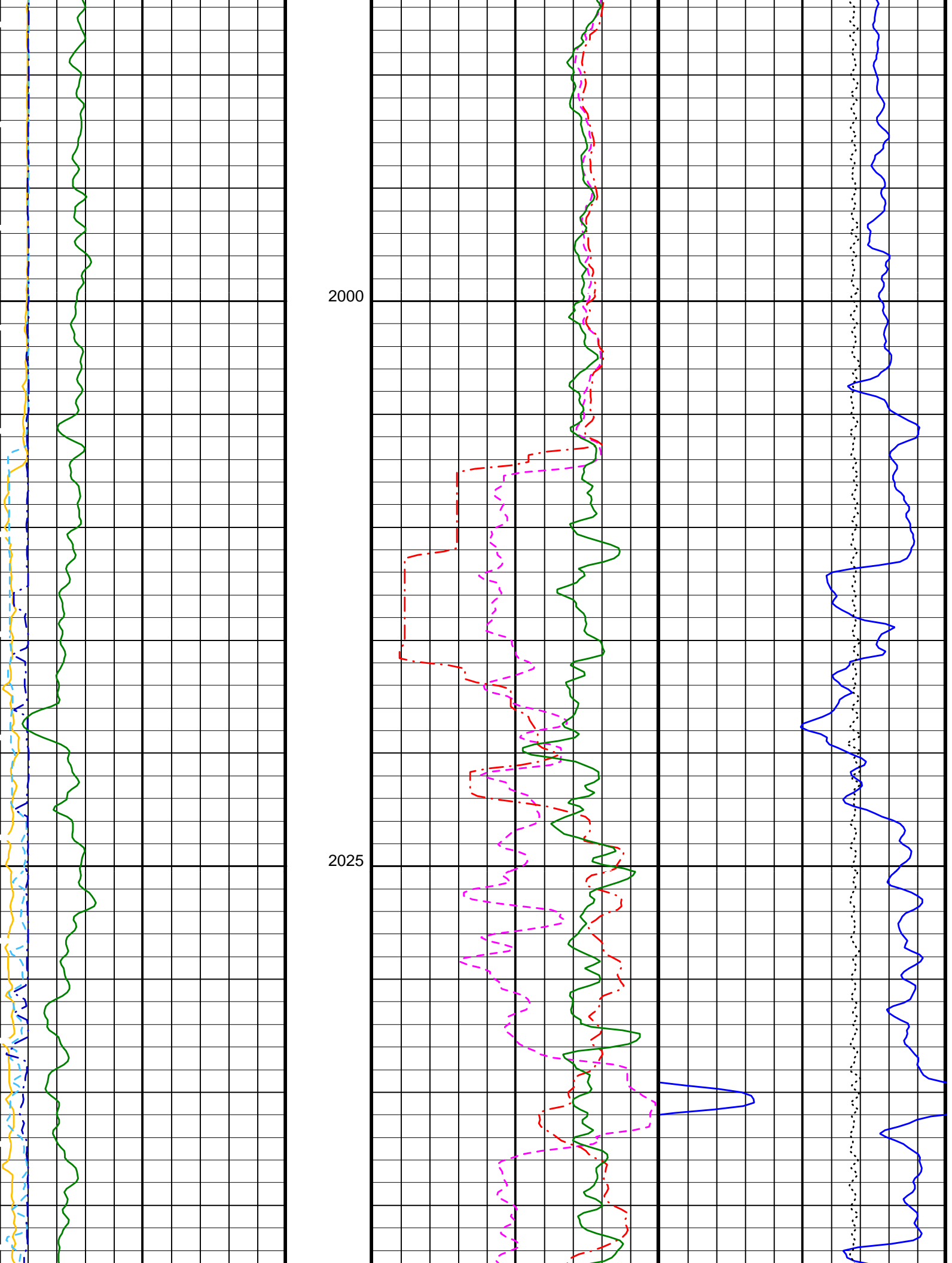
DIT-E	12C0-301	DTA-A	12C0-301
DSST-B	12C0-301	SGT-N	12C0-301
DTC-H	12C0-301		

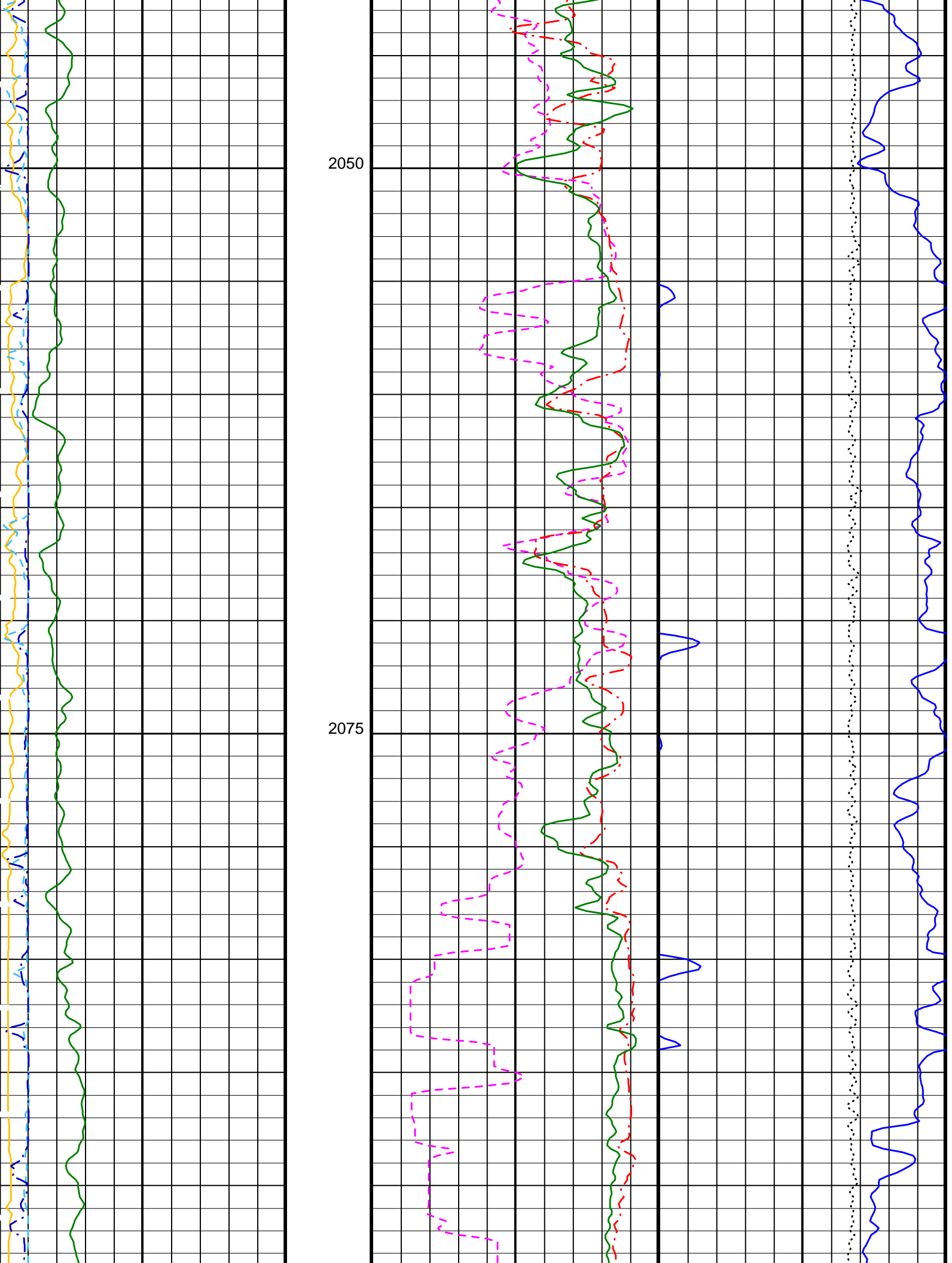
### PIP SUMMARY

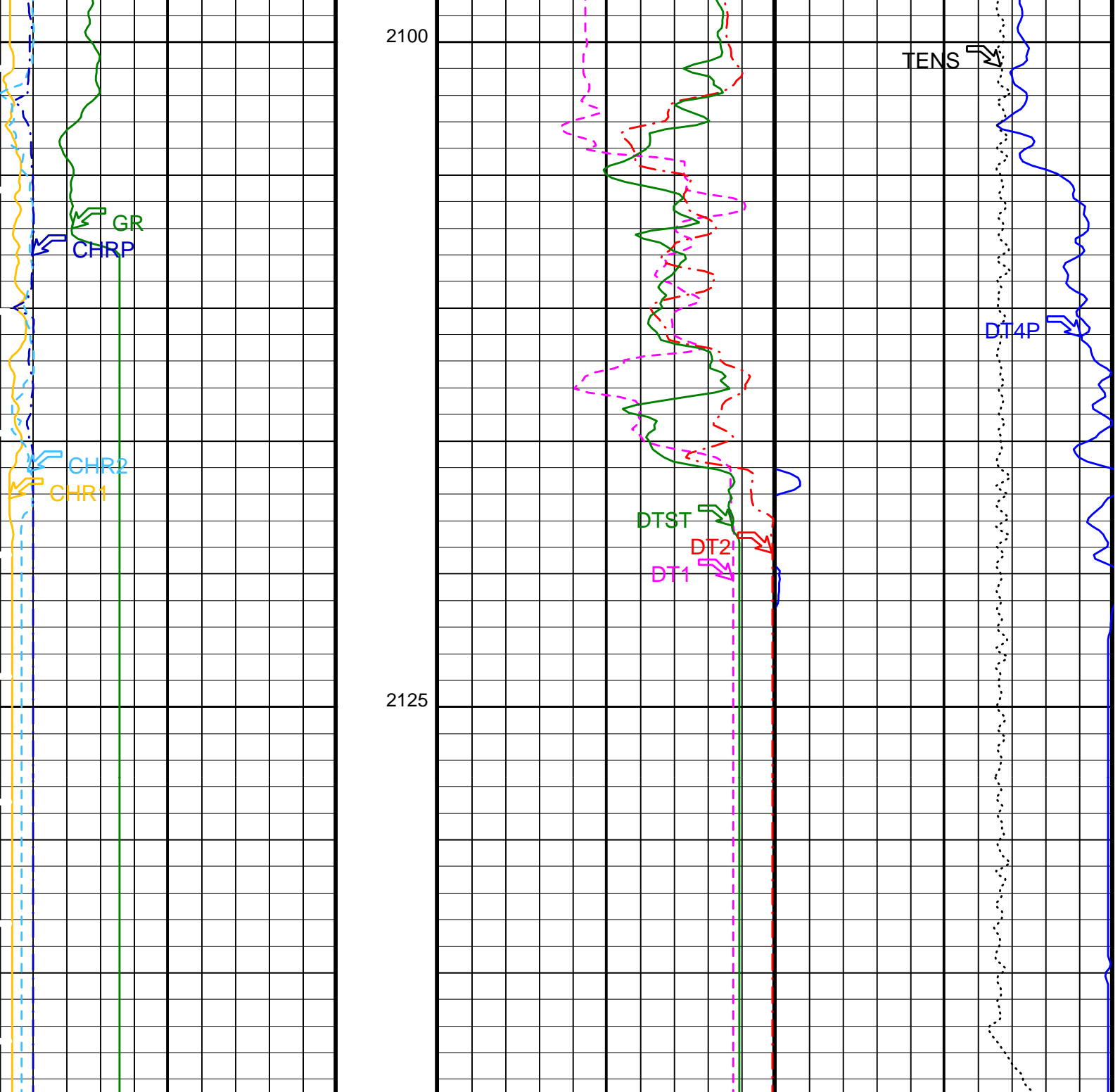
Time Mark Every 60 S











Gamma Ray (GR)		
0	(GAPI)	150
Peak Coherence / RA - Lower Dipole (CHR1)		
0	(---)	10
Peak Coherence / RA - Upper Dipole (CHR2)		
0	(---)	10
Peak Coherence / RA - P & S Comp (CHRP)		
0	(---)	10

Delta-T Shear - Lower Dipole (DT1)		
1600	(US/F)	300
Delta-T Shear - Upper Dipole (DT2)		
1600	(US/F)	300
Delta-T Stoneley (DTST)		
1600	(US/F)	300

Delta-T Comp - P & S (DT4P)		
250	(US/F)	150
Tension (TENS)		
10000	(LBF)	0

PIP SUMMARY

Time Mark Every 60 S

Parameters



Parameters

DLIS Name	Description	Value	
BHS	DIT-E: Dual Induction - E Borehole Status	OPEN	
BHS	DSST-B: Dipole Shear Imager - B Borehole Status	OPEN	
CASF	Label Casing Function - Monopole P&S	50	
COLL	Label Slowness Lower Limit - Monopole P&S Compressional	40	US/F
COUL	Label Slowness Upper Limit - Monopole P&S Compressional	240	US/F
DLCS	Label Compressional Source - Dipole Shear	USE	
DSHL	Label Slowness Lower Limit - Dipole Shear	220	US/F
DSHU	Label Slowness Upper Limit - Dipole Shear	1600	US/F
DTCS	Compressional Delta-T Source for DTCS Channel	PS_COMP	
DTF	Delta-T Fluid	189	US/F
FILG	Label Fill Gap Control - Monopole P&S	COMP_SHEAR	
LFC	Label Formation Character - Monopole P&S	DYNAMIC	
LTXG	Lower Dipole Transmitter Geometry	156	IN
MCS	Mean Casing Slowness	57	US/F
MTXG	Monopole Transmitter Geometry	186	IN
NWI1	Number Waveform Items 1	8	
NWI2	Number Waveform Items 2	8	
NWI4	Number Waveform Items 4	8	
NWIX	Number Waveform Items X	0	
RSMN	Label Shear/Compressional Minimum Ratio - Monopole P&S	1.4	
RSMX	Label Shear/Compressional Maximum Ratio - Monopole P&S	2.12	
RX1G	Receiver 1 Geometry	294	IN
RX2G	Receiver 2 Geometry	300	IN
RX3G	Receiver 3 Geometry	306	IN
RX4G	Receiver 4 Geometry	312	IN
RX5G	Receiver 5 Geometry	318	IN
RX6G	Receiver 6 Geometry	324	IN
RX7G	Receiver 7 Geometry	330	IN
RX8G	Receiver 8 Geometry	336	IN
SAS1	STC Sonic Array Status - Lower Dipole	255	
SAS2	STC Sonic Array Status - Upper Dipole	255	
SAS4	STC Sonic Array Status - Monopole P&S	255	
SFM1	STC Filter - Lower Dipole	B1-3K	
SFM2	STC Filter - Upper Dipole	B.3-1.5K	
SHLL	Label Slowness Lower Limit - Monopole P&S Shear	75	US/F
SHUL	Label Slowness Upper Limit - Monopole P&S Shear	240	US/F
SSW1	STC Source Waveform - Lower Dipole	WF_SAM1	
SSW2	STC Source Waveform - Upper Dipole	WF_SAM2	
SSW4	STC Source Waveform - Monopole P&S	WF_SAM4	
STLL	Label Slowness Lower Limit - Monopole Stoneley	220	US/F
STUL	Label Slowness Upper Limit - Monopole Stoneley	1600	US/F
TWI1	STC Integration Time Window - Lower Dipole	1600	US
TWI2	STC Integration Time Window - Upper Dipole	1600	US
TWI4	STC Integration Time Window - Monopole P&S	500	US
UTXG	Upper Dipole Transmitter Geometry	162	IN
BHS	SGT-N: Scintillation Gamma-Ray - N Borehole Status	OPEN	

Format: DSI\_Field\_Print Vertical Scale: 1:200 Graphics File Created: 27-Oct-2005 00:34

OP System Version: 12C0-301  
MCM

DIT-E	12C0-301	DTA-A	12C0-301
DSST-B	12C0-301	SGT-N	12C0-301
DTC-H	12C0-301		

Output DLIS Files

DEFAULT PI\_DSI\_008LUP FN:7 PRODUCER 27-Oct-2005 00:34



Pass #2

# Output DLIS Files

DEFAULT PI\_DSI\_009LUP FN:8 PRODUCER 27-Oct-2005 01:28 2139.4 M 1785.2 M

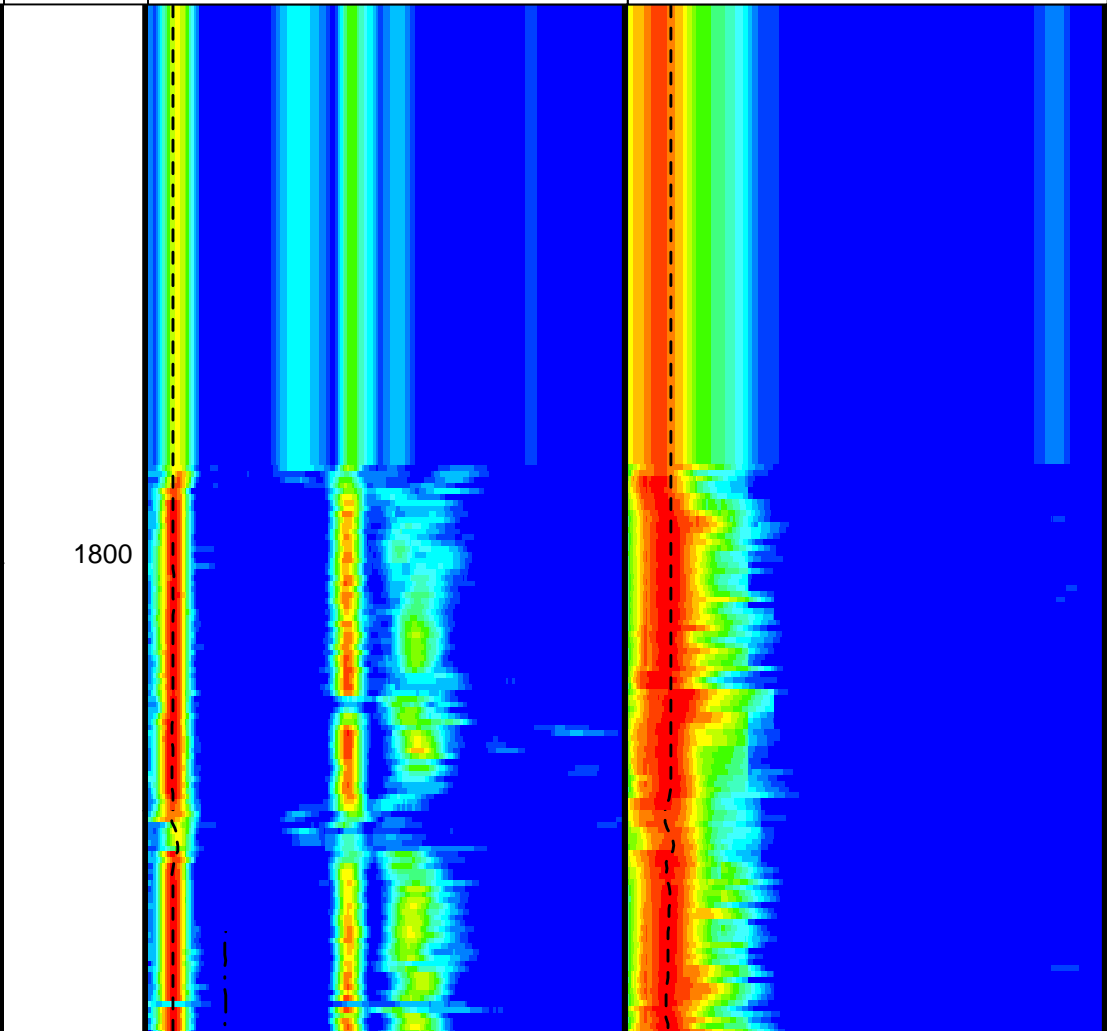
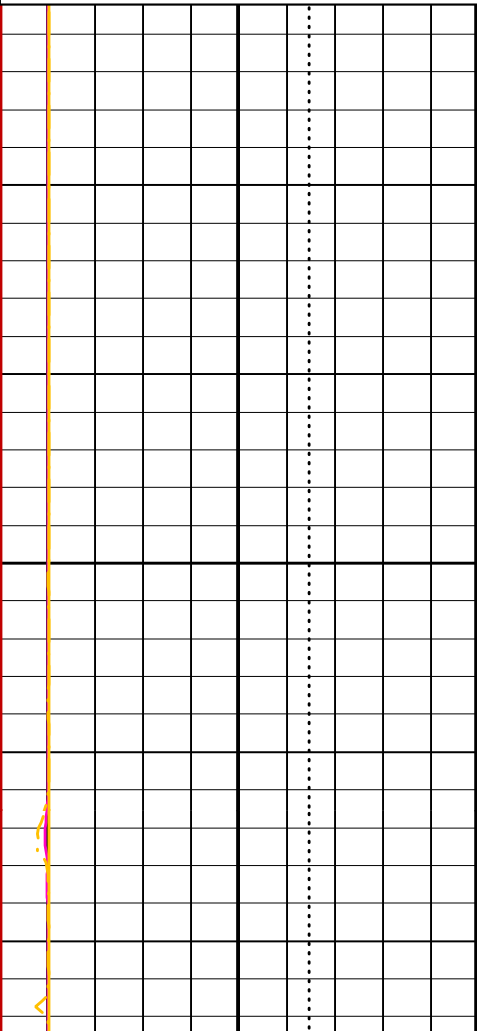
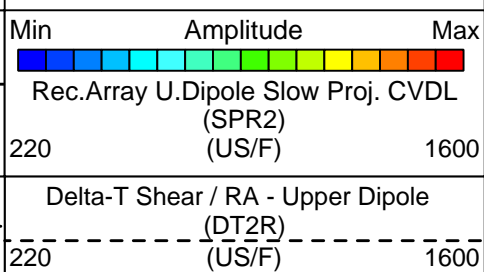
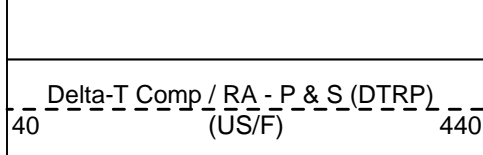
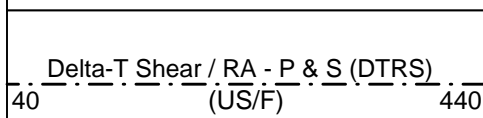
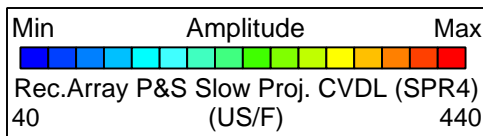
## OP System Version: 12C0-301 MCM

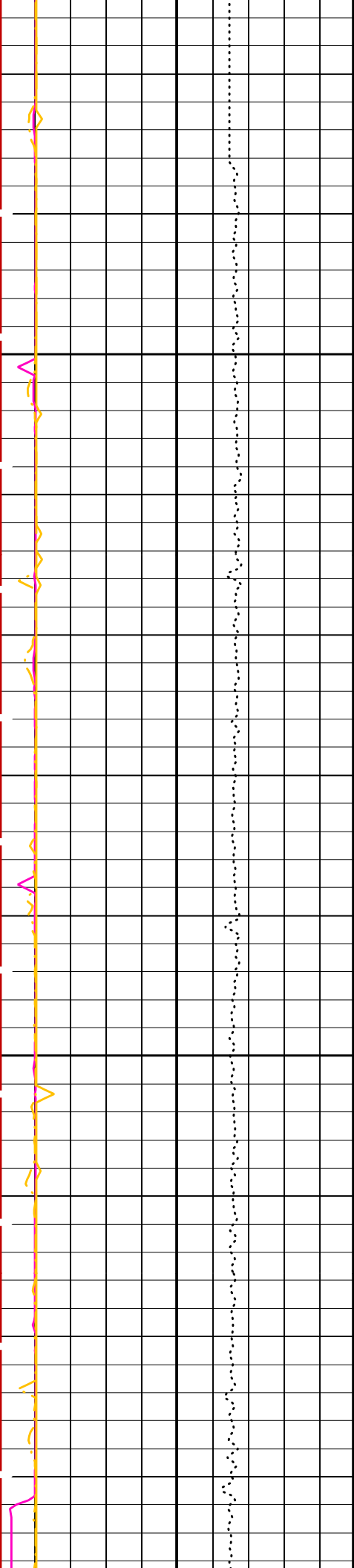
DIT-E	12C0-301	DTA-A	12C0-301
DSST-B	12C0-301	SGT-N	12C0-301
DTC-H	12C0-301		

### PIP SUMMARY

Time Mark Every 60 S

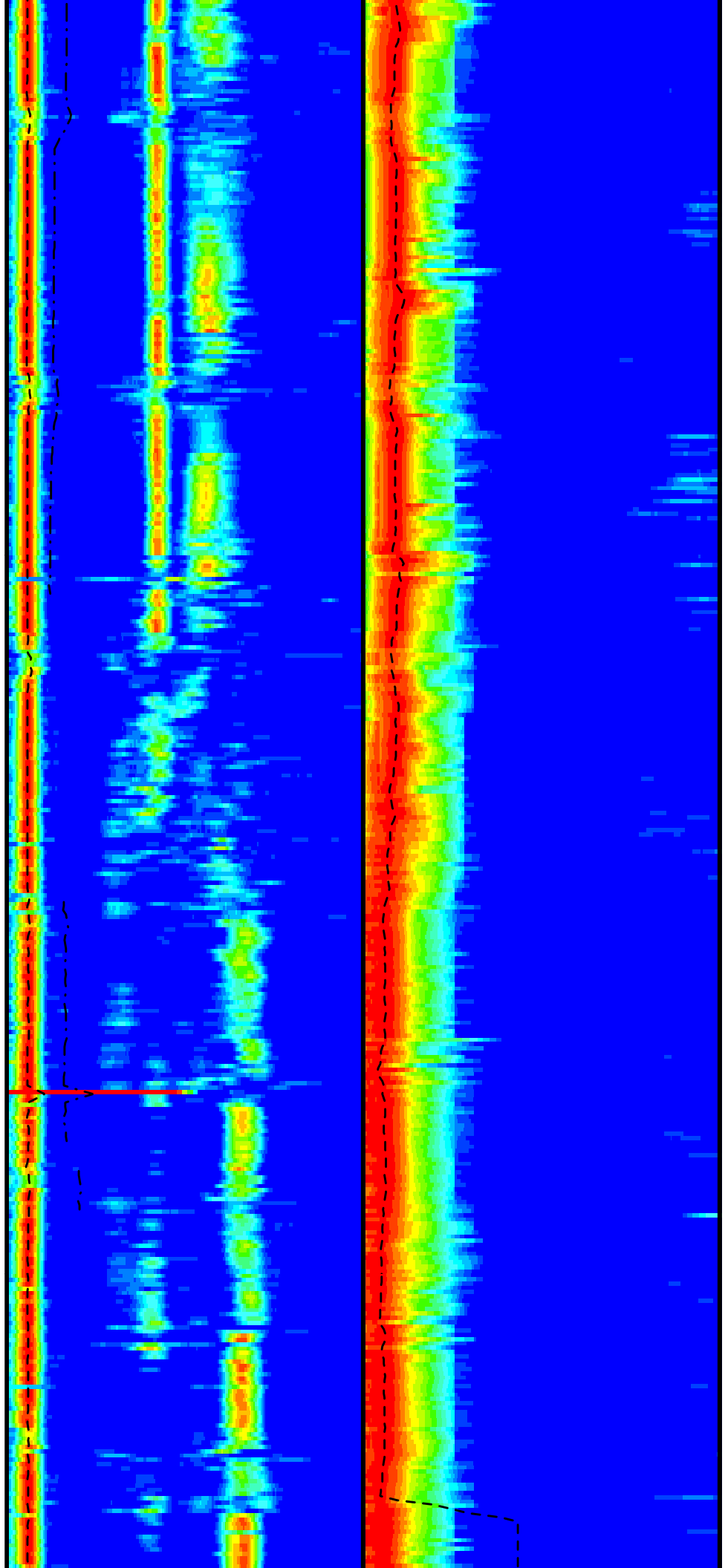
Waveform Data Copy Indicator 4 - Monopole P&S (WCI4)		
0	(---)	10
Peak Coherence / RA - P & S Shear (CHRS)		
-1	(---)	9
Peak Coherence / RA - P & S Comp (CHRP)		
0	(---)	10
Peak Coherence / RA - Upper Dipole (CHR2)		
0	(---)	10
Tension (TENS)		
10000	(LBF)	0

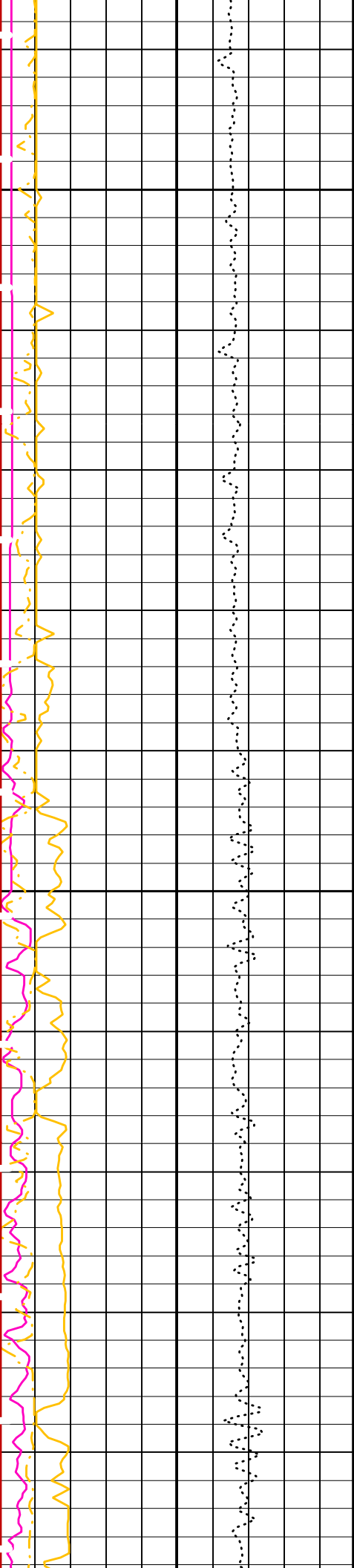




1825

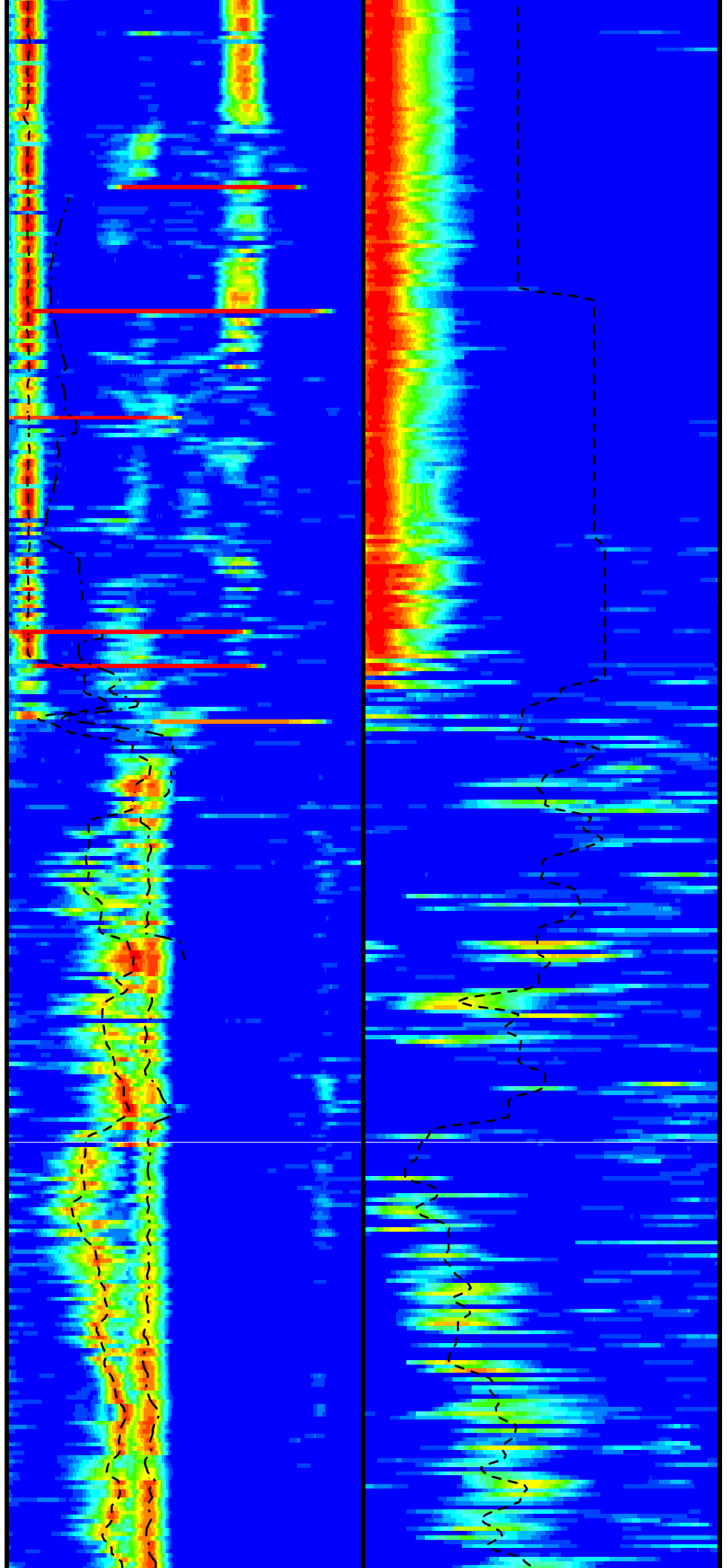
1850

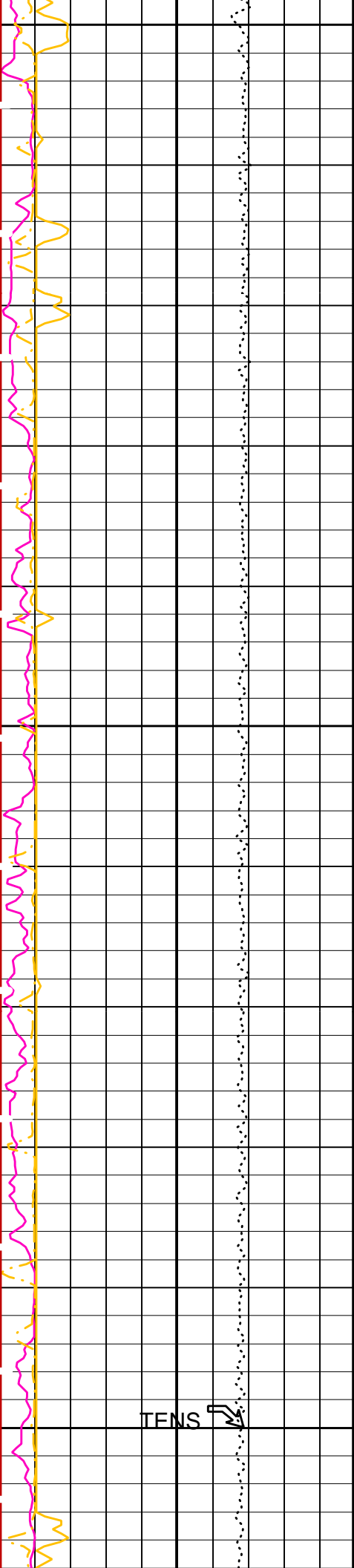




1875

1900



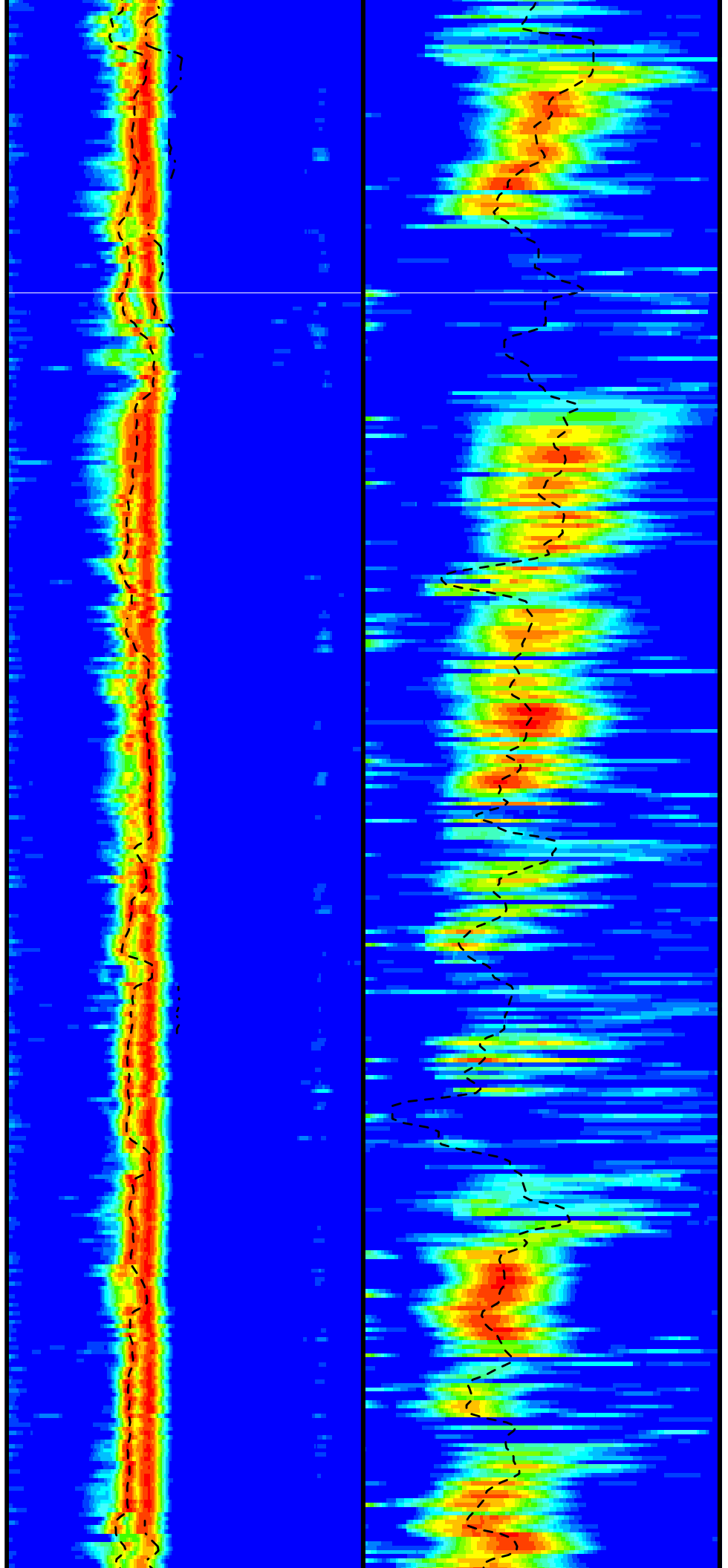


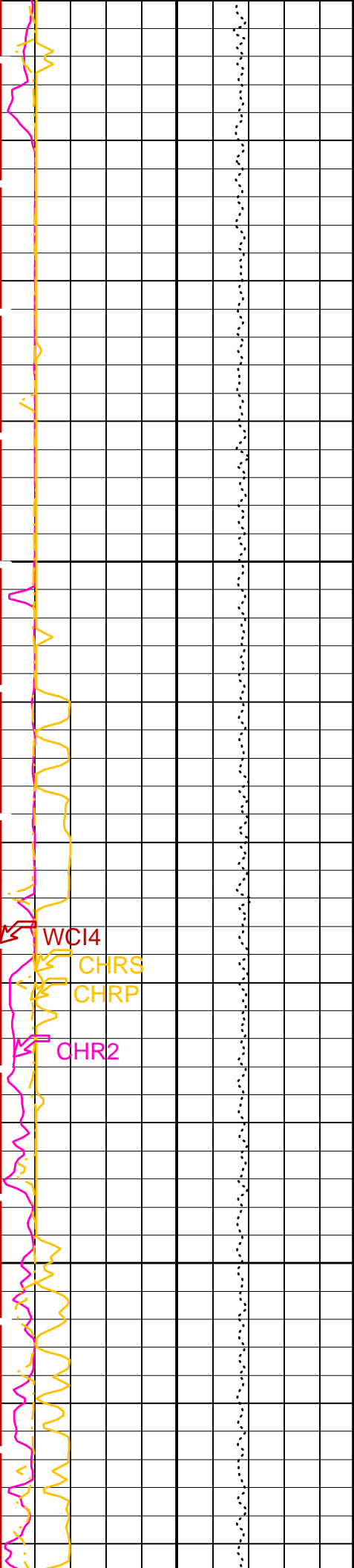
1925

1950

1975

TENS →





2000

2025

WCI4

CHRS

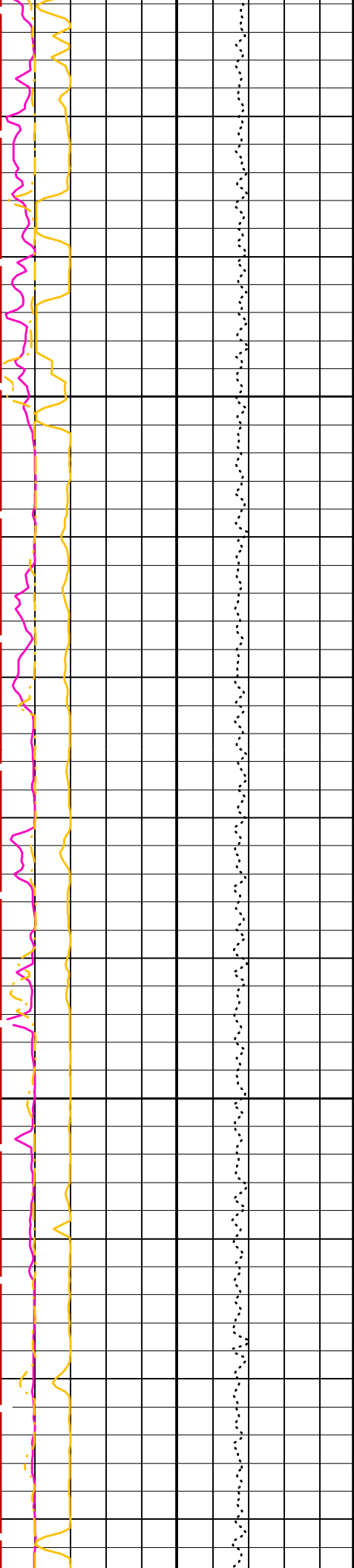
CHRP

CHR2

DTRS

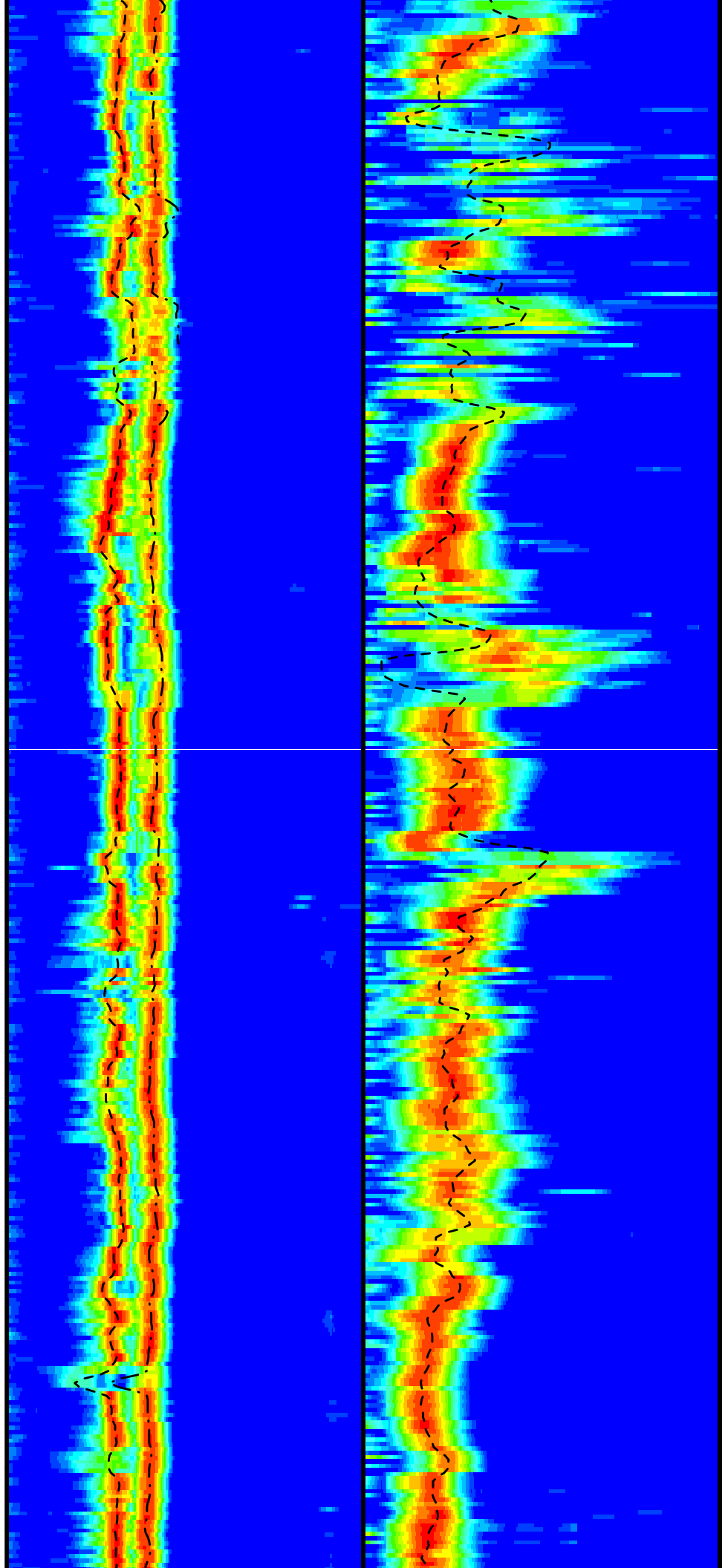
DTRP

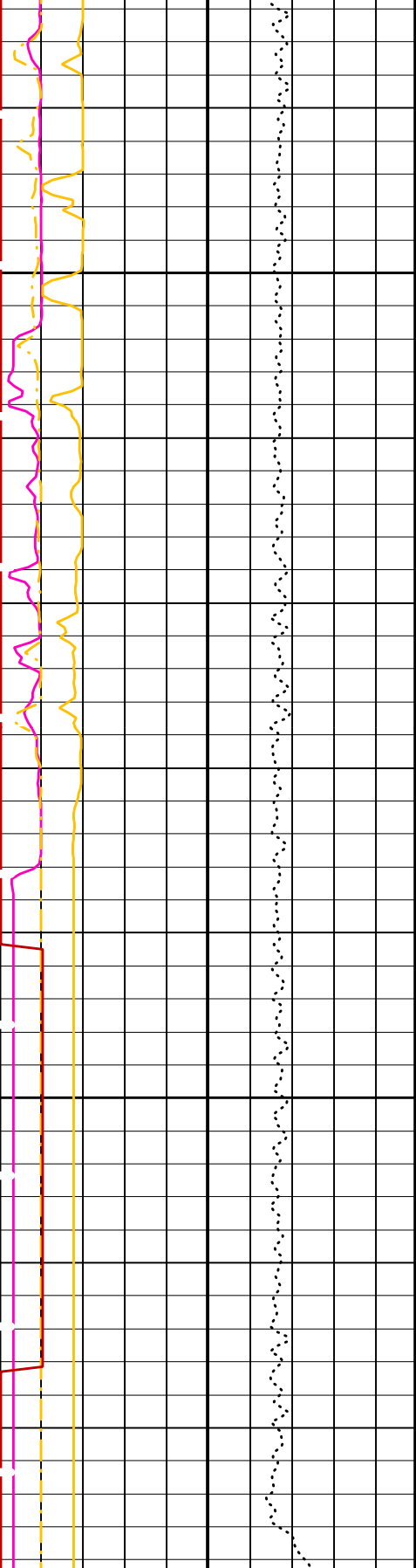
DT2R



2050

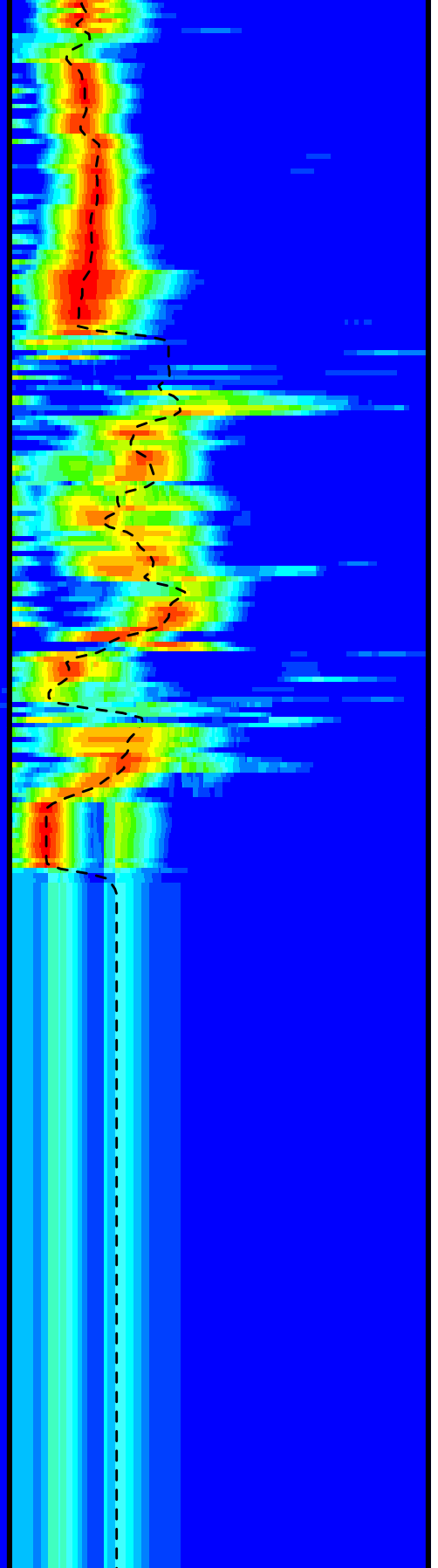
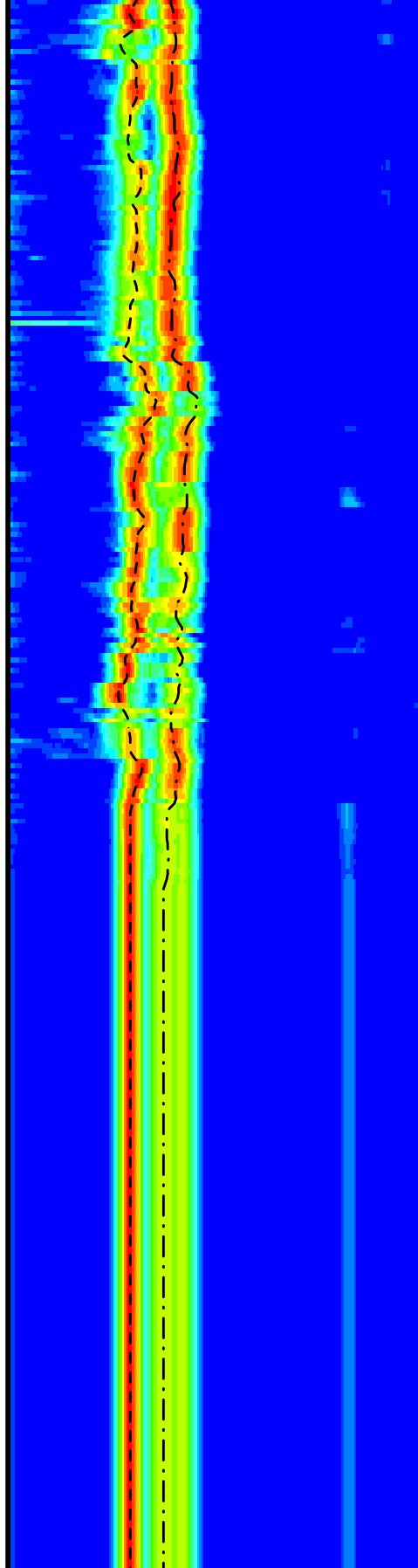
2075





2100

2125



Tension (TENS)  
10000 (LBF) 0

Peak Coherence / RA - Upper Dipole (CHR2)  
0 (---) 10

Peak Coherence / RA - P & S Comp

Delta-T Comp / RA - P & S (DTRP)  
40 (US/F) 440

Delta-T Shear / RA - P & S (DTRS)  
40 (US/F) 440

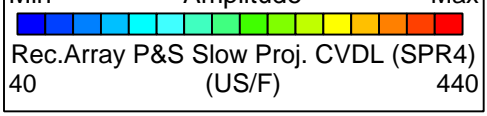
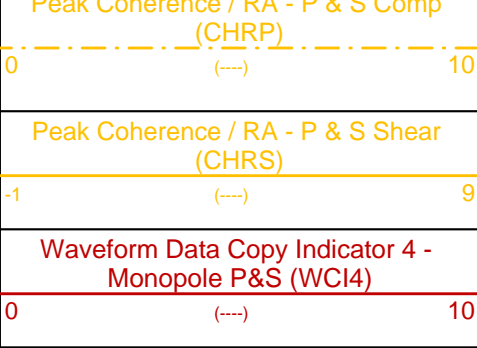
Min Amplitude Max

Delta-T Shear / RA - Upper Dipole (DT2R)  
220 (US/F) 1600

Min Amplitude Max  
Rec.Array U.Dipole Slow Proj. CVDL (SPR2)  
220 (US/F) 1600

Min Amplitude Max





PIP SUMMARY

Time Mark Every 60 S

Parameters

DLIS Name	Description	Value	
BHS	DIT-E: Dual Induction - E Borehole Status	OPEN	
BHS	DSST-B: Dipole Shear Imager - B Borehole Status	OPEN	
CASF	Label Casing Function - Monopole P&S	50	
COLL	Label Slowness Lower Limit - Monopole P&S Compressional	40	US/F
COUL	Label Slowness Upper Limit - Monopole P&S Compressional	240	US/F
DDE2	Digitizing Delay 2	0	US
DDE4	Digitizing Delay 4	0	US
DDEX	Digitizing Delay X	0	US
DLCS	Label Compressional Source - Dipole Shear	USE	
DSHL	Label Slowness Lower Limit - Dipole Shear	220	US/F
DSHU	Label Slowness Upper Limit - Dipole Shear	1150	US/F
DSI2	Digitizer Sample Interval 2	40	US
DSI4	Digitizer Sample Interval 4	10	US
DSIX	Digitizer Sample Interval X	40	US
DTCS	Compressional Delta-T Source for DTCS Channel	PS_COMP	
DTF	Delta-T Fluid	189	US/F
DWC2	Digitizer Word Count 2	512	
DWC4	Digitizer Word Count 4	512	
DWCX	Digitizer Word Count X	512	
FILG	Label Fill Gap Control - Monopole P&S	COMP_SHEAR	
LFC	Label Formation Character - Monopole P&S	DYNAMIC	
MCS	Mean Casing Slowness	57	US/F
MTXG	Monopole Transmitter Geometry	186	IN
NWI2	Number Waveform Items 2	8	
NWI4	Number Waveform Items 4	8	
NWIX	Number Waveform Items X	0	
RSMN	Label Shear/Compressional Minimum Ratio - Monopole P&S	1.2	
RSMX	Label Shear/Compressional Maximum Ratio - Monopole P&S	2.12	
RX1G	Receiver 1 Geometry	294	IN
RX2G	Receiver 2 Geometry	300	IN
RX3G	Receiver 3 Geometry	306	IN
RX4G	Receiver 4 Geometry	312	IN
RX5G	Receiver 5 Geometry	318	IN
RX6G	Receiver 6 Geometry	324	IN
RX7G	Receiver 7 Geometry	330	IN
RX8G	Receiver 8 Geometry	336	IN
SAM2	DSST Sonic Acquisition Mode 2 - Upper Dipole Mode	LFD_ODD	
SAM4	DSST Sonic Acquisition Mode 4 - High Frequency Monopole Mode for P&S	MFD_EVEN	
SAMX	DSST Sonic Acquisition Mode X - Both Dipoles or Monopole Mode for Expert	OFF	
SAS2	STC Sonic Array Status - Upper Dipole	255	
SAS4	STC Sonic Array Status - Monopole P&S	255	
SBO2	STC Search Band Offset - Upper Dipole	3000	US
SBO4	STC Search Band Offset - Monopole P&S	500	US
SBR4	STC Baseline Removal - Monopole P&S	ON	
SBW2	STC Search Bandwidth - Upper Dipole	8000	US
SBW4	STC Search Bandwidth - Monopole P&S	2000	US
SFC2	STC Formation Character - Upper Dipole	SELECTABLE	
SFC4	STC Formation Character - Monopole P&S	SELECTABLE	
SFM2	STC Filter - Upper Dipole	B.3-1.5K	
SFM4	STC Filter - Monopole P&S	B3-12K	
SHLL	Label Slowness Lower Limit - Monopole P&S Shear	75	US/F
SHUL	Label Slowness Upper Limit - Monopole P&S Shear	240	US/F
SLL2	STC Slowness Lower Limit - Upper Dipole	220	US/F
SLL4	STC Slowness Lower Limit - Monopole P&S	40	US/F
SST2	STC Slowness Step - Upper Dipole	4	US/F
SST4	STC Slowness Step - Monopole P&S	2	US/F
SSW2	STC Source Waveform - Upper Dipole	WF_SAM2	
SSW4	STC Source Waveform - Monopole P&S	WF_SAM4	

STLL	Label Slowness Upper Limit - Monopole Stoneley	220	US/F
STUL	Label Slowness Upper Limit - Monopole Stoneley	1600	US/F
SUL2	STC Slowness Upper Limit - Upper Dipole	1600	US/F
SUL4	STC Slowness Upper Limit - Monopole P&S	440	US/F
SWD2	STC Slowness Width - Upper Dipole	40	US/F
SWD4	STC Slowness Width - Monopole P&S	10	US/F
TBF2	STC Time for Baseline Fill - Upper Dipole	0	US
TBF4	STC Time for Baseline Fill - Monopole P&S	300	US
TLL2	STC Time Lower Limit - Upper Dipole	1420	US
TLL4	STC Time Lower Limit - Monopole P&S	150	US
TST2	STC Time Step - Upper Dipole	200	US
TST4	STC Time Step - Monopole P&S	50	US
TUL2	STC Time Upper Limit - Upper Dipole	20440	US
TUL4	STC Time Upper Limit - Monopole P&S	5110	US
TWD2	STC Time Width - Upper Dipole	2000	US
TWD4	STC Time Width - Monopole P&S	1000	US
TWI2	STC Integration Time Window - Upper Dipole	1600	US
TWI4	STC Integration Time Window - Monopole P&S	500	US
TWSX	Transmitter Waveform Select X	0	
UTXG	Upper Dipole Transmitter Geometry	162	IN
WFM4	Waveform Mode 4	W1	
BHS	SGT-N: Scintillation Gamma-Ray - N Borehole Status		OPEN

Format: DSST\_P\_S\_UPPER\_VDL\_COLOR    Vertical Scale: 1:200    Graphics File Created: 27-Oct-2005 01:28

### OP System Version: 12C0-301 MCM

DIT-E	12C0-301	DTA-A	12C0-301
DSST-B	12C0-301	SGT-N	12C0-301
DTC-H	12C0-301		

### Output DLIS Files

DEFAULT    PI\_DSI\_009LUP    FN:8    PRODUCER    27-Oct-2005 01:28

### Output DLIS Files

DEFAULT    PI\_DSI\_009LUP    FN:8    PRODUCER    27-Oct-2005 01:28    2139.4 M    1785.2 M

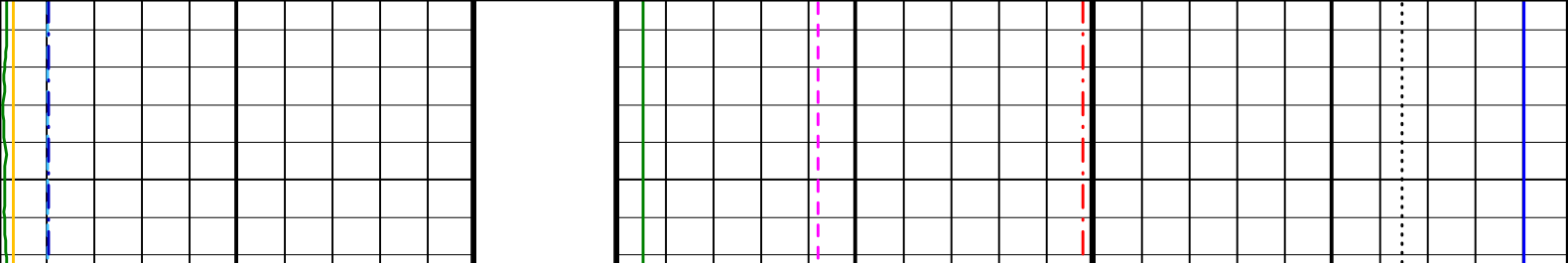
### OP System Version: 12C0-301 MCM

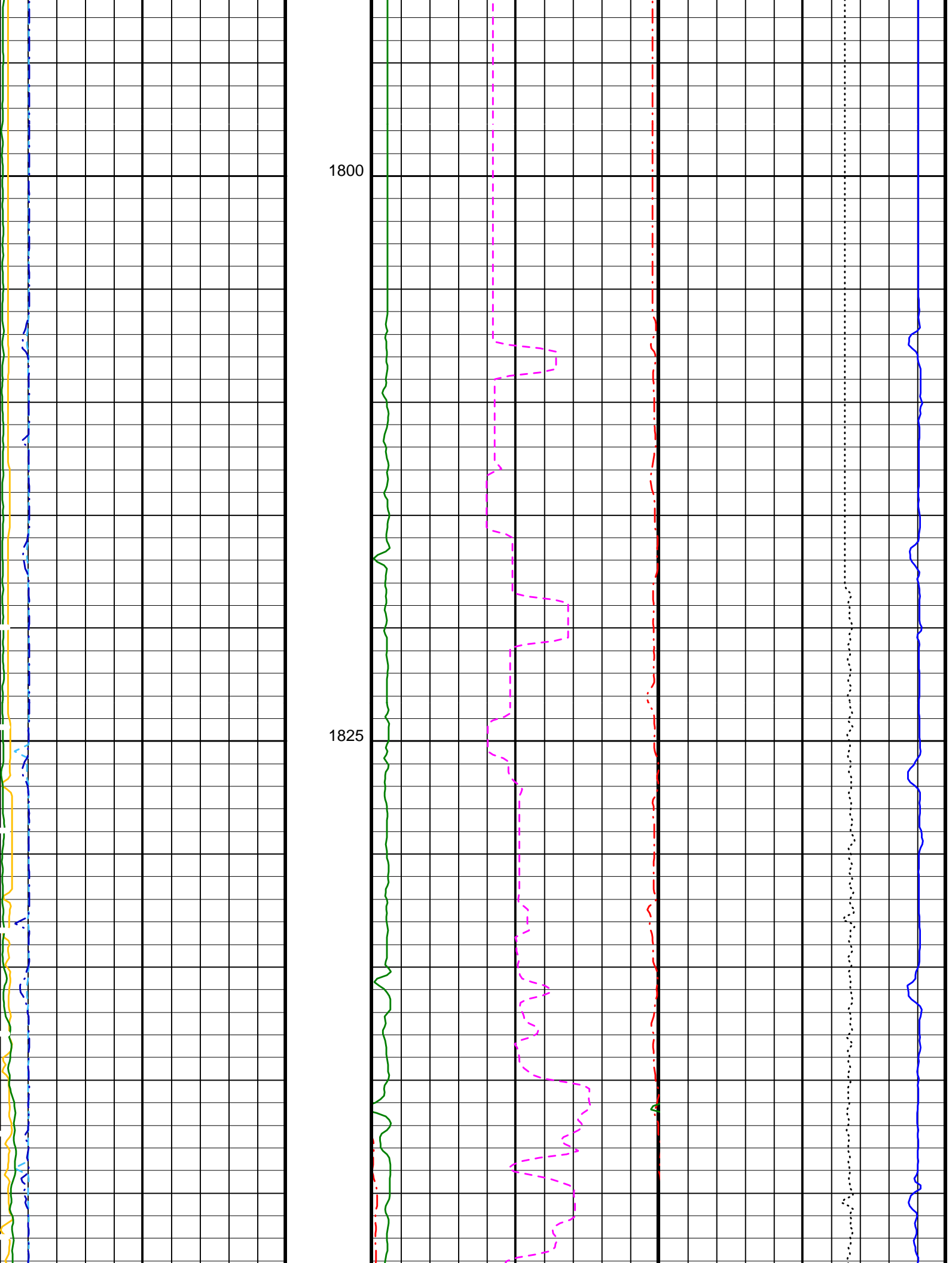
DIT-E	12C0-301	DTA-A	12C0-301
DSST-B	12C0-301	SGT-N	12C0-301
DTC-H	12C0-301		

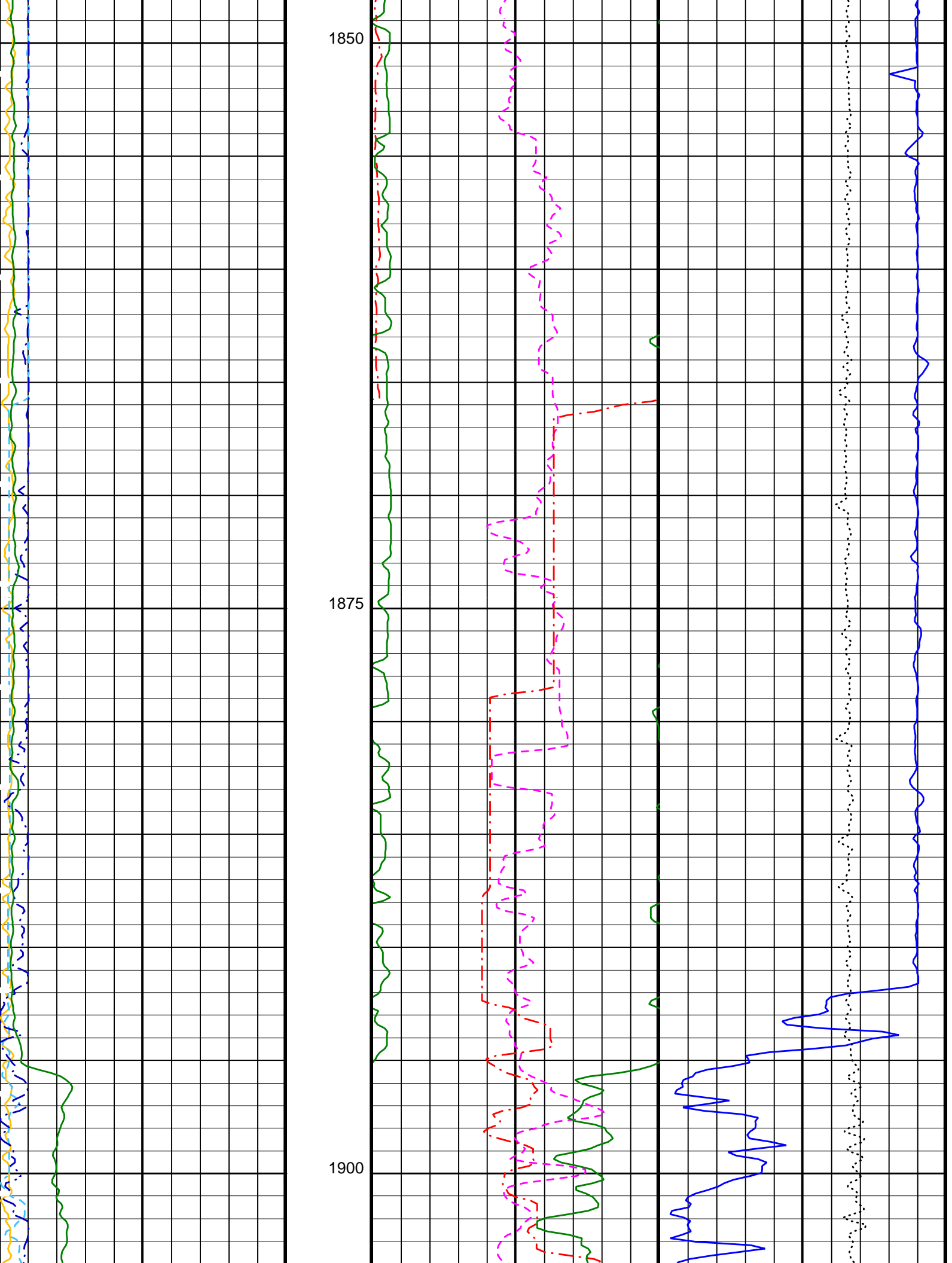
### PIP SUMMARY

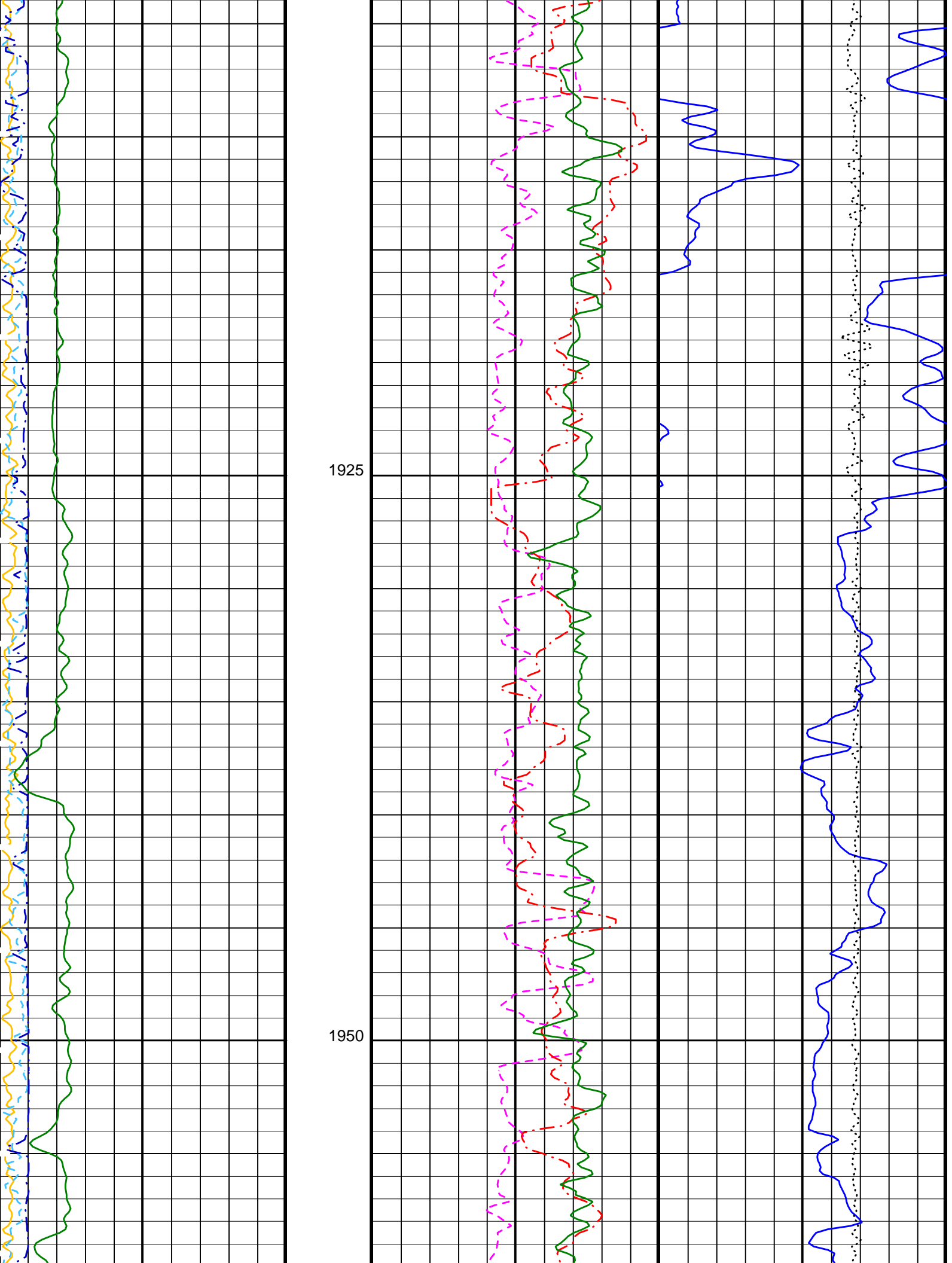
▶ Time Mark Every 60 S

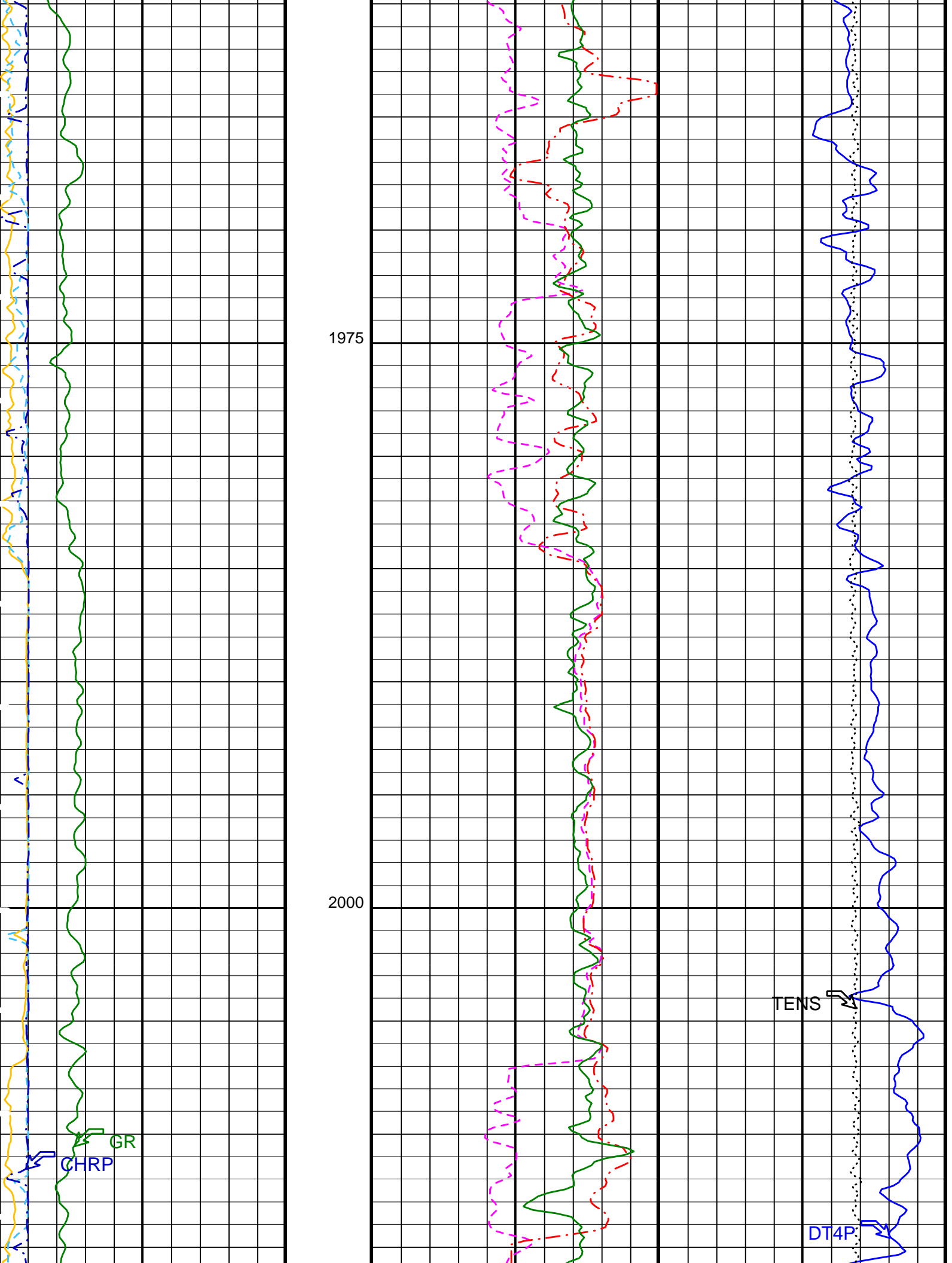
<b>Peak Coherence / RA - P &amp; S Comp (CHRP)</b> 0 (---) 10		
<b>Peak Coherence / RA - Upper Dipole (CHR2)</b> 0 (---) 10	<b>Delta-T Stoneley (DTST)</b> 1600 (US/F) 300	
<b>Peak Coherence / RA - Lower Dipole (CHR1)</b> 0 (---) 10	<b>Delta-T Shear - Upper Dipole (DT2)</b> 1600 (US/F) 300	<b>Tension (TENS)</b> 10000 (LBF) 0
<b>Gamma Ray (GR) (GAPI)</b> 0 150	<b>Delta-T Shear - Lower Dipole (DT1)</b> 1600 (US/F) 300	<b>Delta-T Comp - P &amp; S (DT4P)</b> 250 (US/F) 150

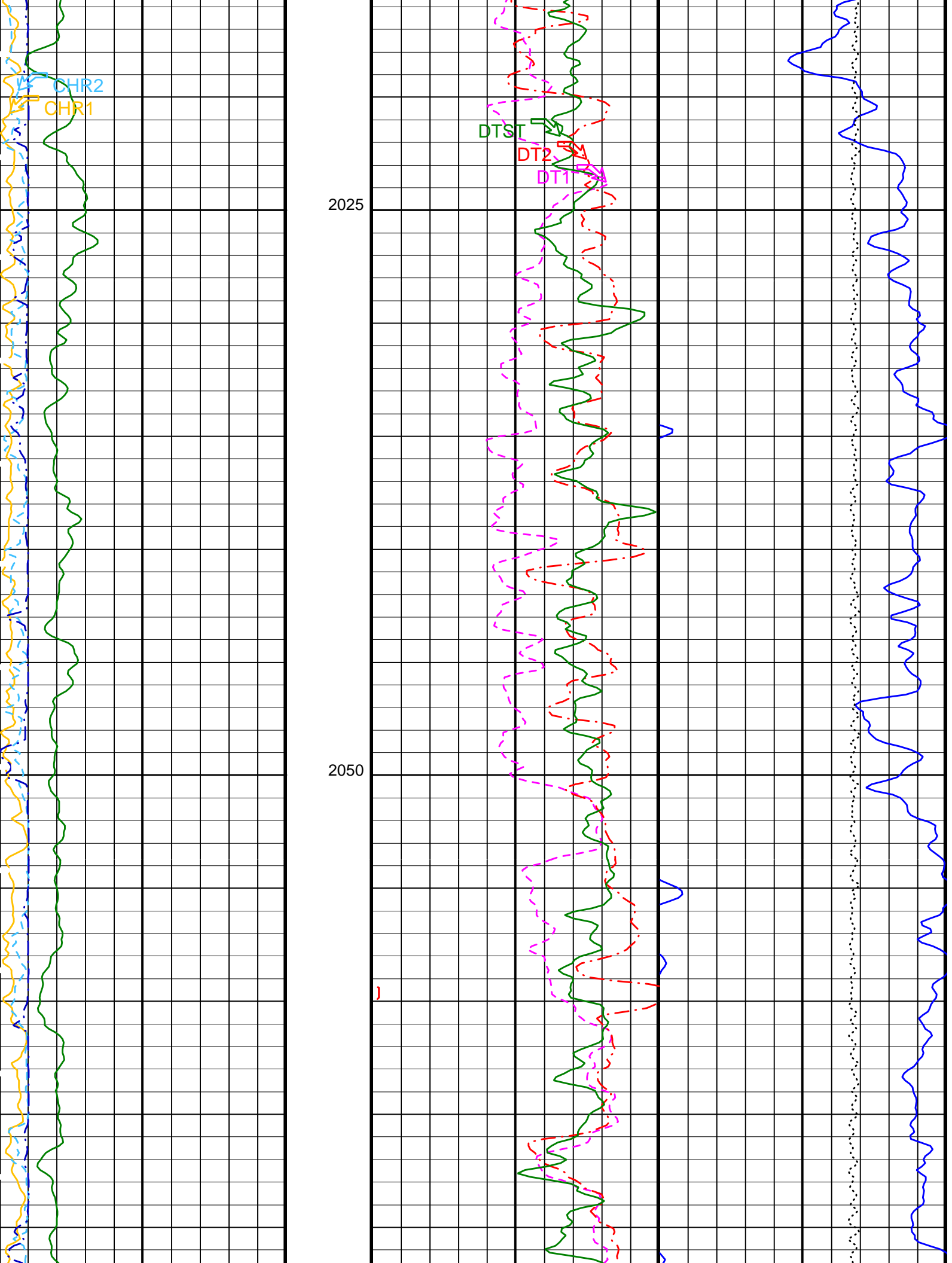


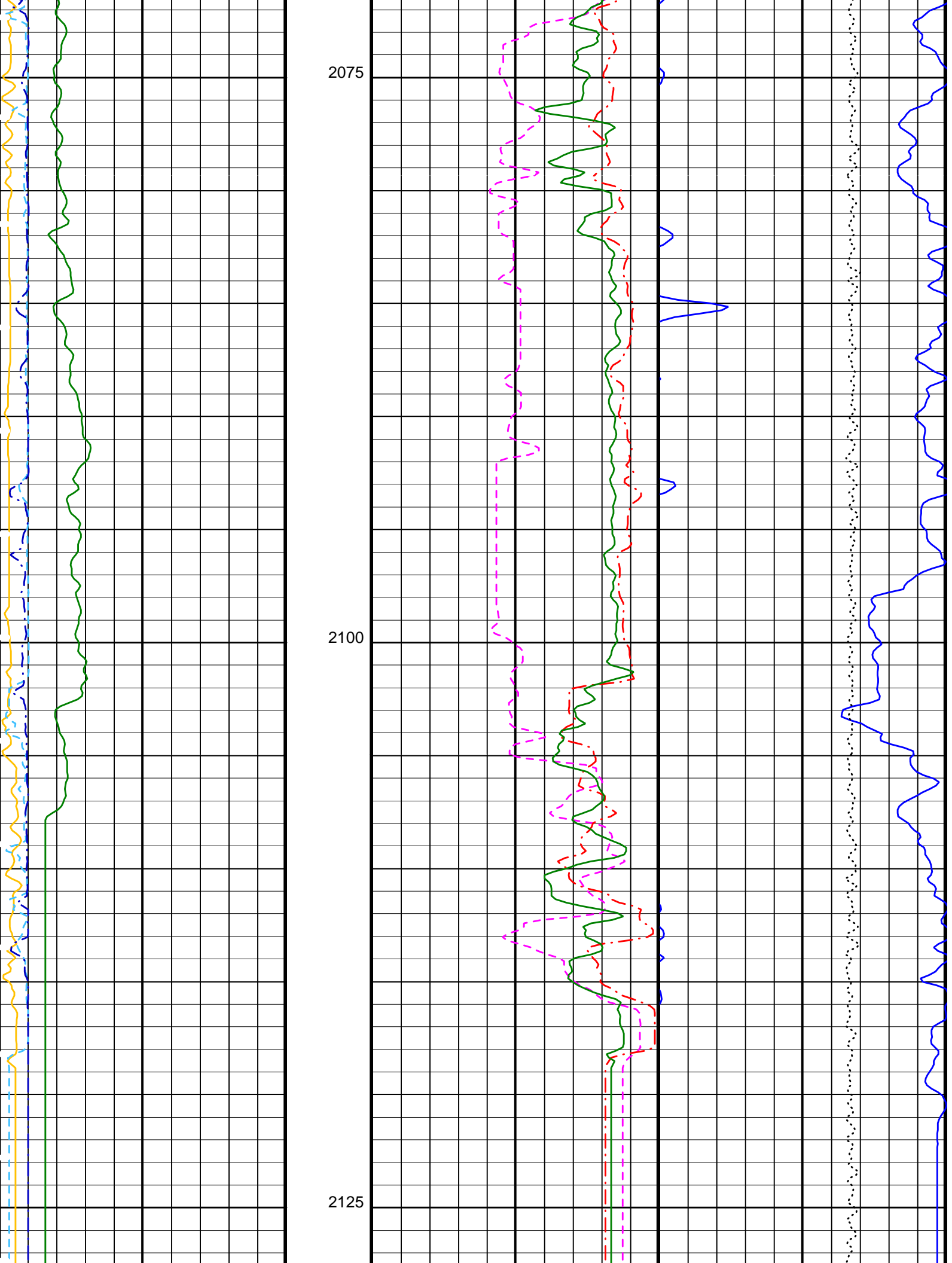




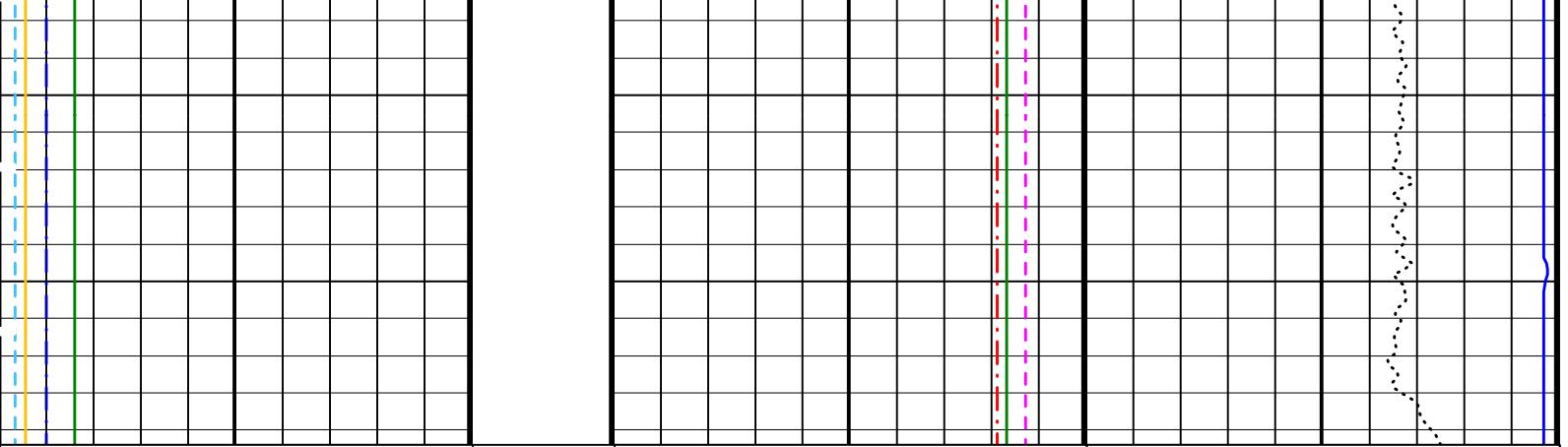












Gamma Ray (GR) (GAPI) 0 150	Delta-T Shear - Lower Dipole (DT1) (US/F) 1600 300	Delta-T Comp - P & S (DT4P) (US/F) 250 150
Peak Coherence / RA - Lower Dipole (CHR1) 0 10	Delta-T Shear - Upper Dipole (DT2) (US/F) 1600 300	Tension (TENS) (LBF) 10000 0
Peak Coherence / RA - Upper Dipole (CHR2) 0 10	Delta-T Stoneley (DTST) (US/F) 1600 300	
Peak Coherence / RA - P & S Comp (CHRP) 0 10		

PIP SUMMARY

▶ Time Mark Every 60 S

Parameters

DLIS Name	Description	Value
BHS	DIT-E: Dual Induction - E Borehole Status	OPEN
BHS	DSST-B: Dipole Shear Imager - B Borehole Status	OPEN
CASF	Label Casing Function - Monopole P&S	50
COLL	Label Slowness Lower Limit - Monopole P&S Compressional	40 US/F
COUL	Label Slowness Upper Limit - Monopole P&S Compressional	240 US/F
DLCS	Label Compressional Source - Dipole Shear	USE
DSHL	Label Slowness Lower Limit - Dipole Shear	220 US/F
DSHU	Label Slowness Upper Limit - Dipole Shear	1150 US/F
DTCS	Compressional Delta-T Source for DTCS Channel	PS_COMP
DTF	Delta-T Fluid	189 US/F
FILG	Label Fill Gap Control - Monopole P&S	COMP_SHEAR
LFC	Label Formation Character - Monopole P&S	DYNAMIC
LTXG	Lower Dipole Transmitter Geometry	156 IN
MCS	Mean Casing Slowness	57 US/F
MTXG	Monopole Transmitter Geometry	186 IN
NWI1	Number Waveform Items 1	8
NWI2	Number Waveform Items 2	8
NWI4	Number Waveform Items 4	8
NWIX	Number Waveform Items X	0
RSMN	Label Shear/Compressional Minimum Ratio - Monopole P&S	1.2
RSMX	Label Shear/Compressional Maximum Ratio - Monopole P&S	2.12
RX1G	Receiver 1 Geometry	294 IN
RX2G	Receiver 2 Geometry	300 IN
RX3G	Receiver 3 Geometry	306 IN
RX4G	Receiver 4 Geometry	312 IN
RX5G	Receiver 5 Geometry	318 IN
RX6G	Receiver 6 Geometry	324 IN
RX7G	Receiver 7 Geometry	330 IN
RX8G	Receiver 8 Geometry	336 IN
SAS1	STC Sonic Array Status - Lower Dipole	255
SAS2	STC Sonic Array Status - Upper Dipole	255
SAS4	STC Sonic Array Status - Monopole P&S	255
SFM1	STC Filter - Lower Dipole	B1-3K
SFM2	STC Filter - Upper Dipole	B.3-1.5K
SHLL	Label Slowness Lower Limit - Monopole P&S Shear	75 US/F
SHUL	Label Slowness Upper Limit - Monopole P&S Shear	240 US/F
SSW1	STC Source Waveform - Lower Dipole	WF_SAM1
SSW2	STC Source Waveform - Upper Dipole	WF_SAM2

SSW4	STC Source Waveform - Monopole P&S	WF_SAM4	
STLL	Label Slowness Lower Limit - Monopole Stoneley	220	US/F
STUL	Label Slowness Upper Limit - Monopole Stoneley	1600	US/F
TWI1	STC Integration Time Window - Lower Dipole	1600	US
TWI2	STC Integration Time Window - Upper Dipole	1600	US
TWI4	STC Integration Time Window - Monopole P&S	500	US
UTXG	Upper Dipole Transmitter Geometry	162	IN
BHS	SGT-N: Scintillation Gamma-Ray - N Borehole Status		OPEN

Format: DSI\_Field\_Print    Vertical Scale: 1:200    Graphics File Created: 27-Oct-2005 01:28

## OP System Version: 12C0-301

MCM

DIT-E	12C0-301	DTA-A	12C0-301
DSST-B	12C0-301	SGT-N	12C0-301
DTC-H	12C0-301		

## Output DLIS Files

DEFAULT    PI\_DSI\_009LUP    FN:8    PRODUCER    27-Oct-2005 01:28

**Company:** Lamont Doherty

**Schlumberger**

**Well:** IODP EXP 311 Site U1326D

**Field:** CAS-03C

**Country:** Canada

**Ocean:** Pacific

Dipole Sonic