

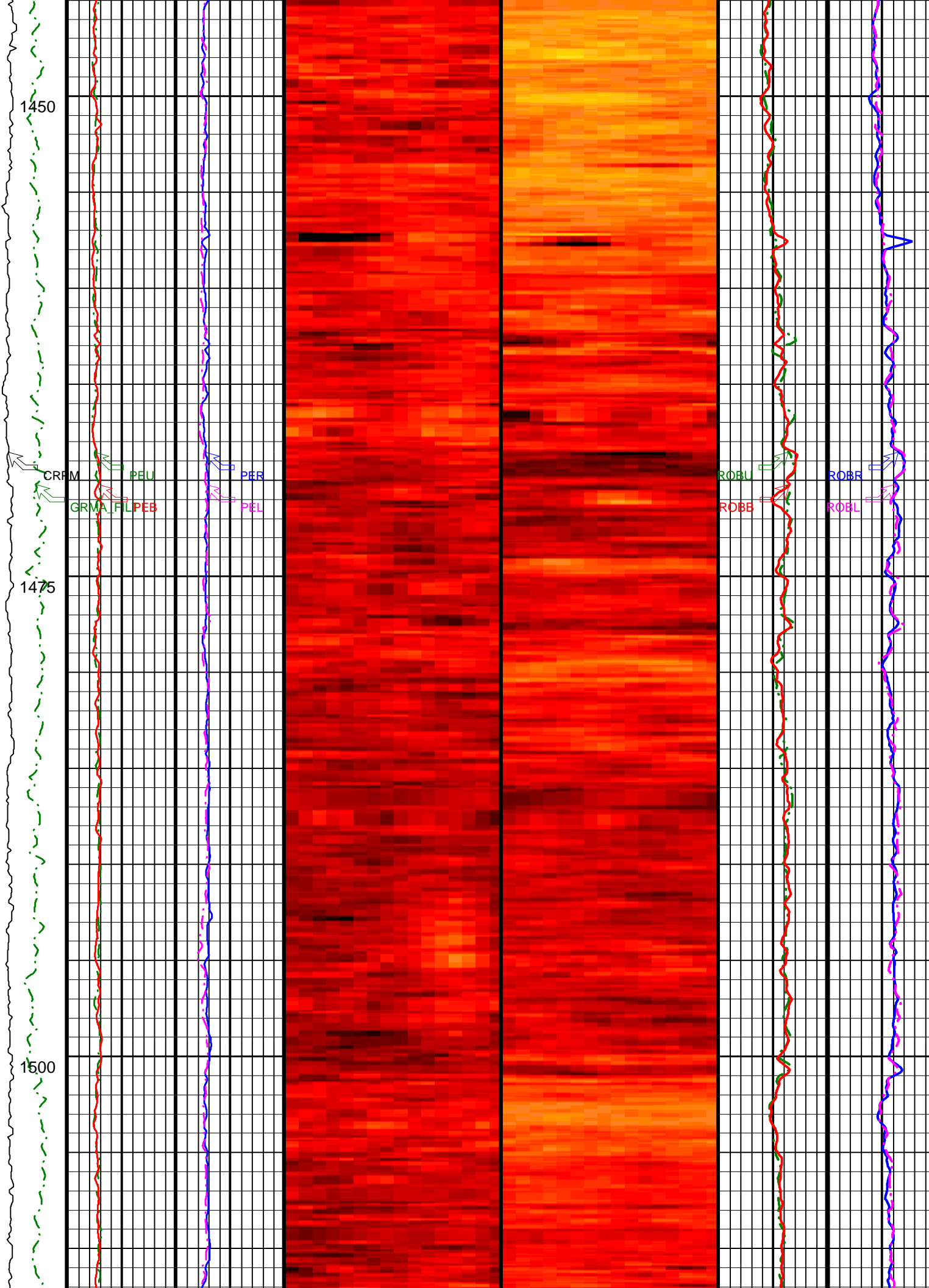
1400

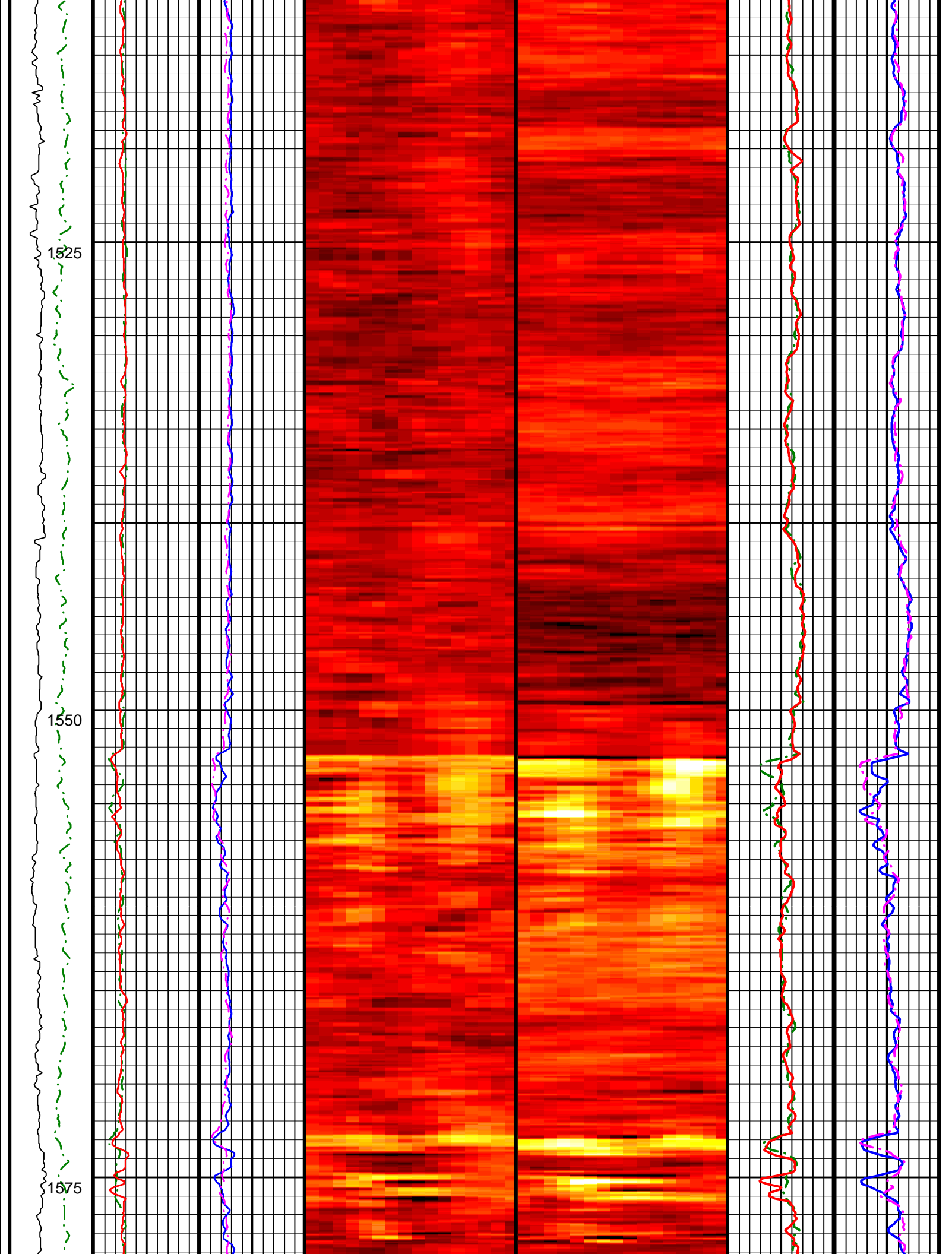
1425

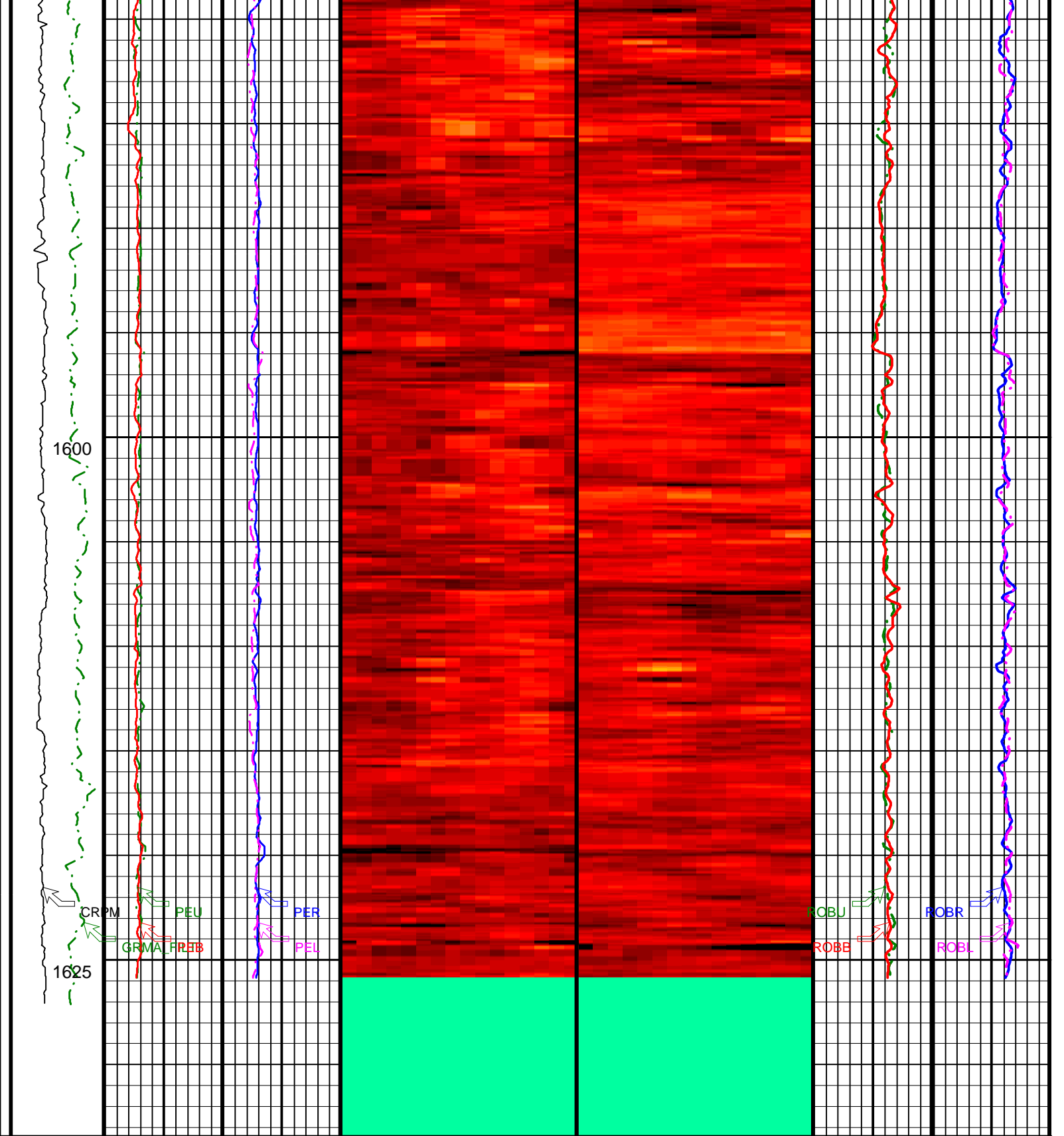
1450

1475

1500







Collar Rotational Speed (CRPM) (RPM)

0 200

Photoelectric Factor, Up (PEU)

0 (----) 10

Photoelectric Factor, Right (PER)

0 (----) 10

Absent 0.256 0.598 0.939 1.280 1.622 1.963 2.305 2.646 2.988 3.329

ADN Photoelectric Factor (16-Sector) Image Oriented Top of Hole (U,R,B,L,U) (PESI)

(----)

Absent 1.370 1.462 1.555 1.648 1.740 1.833 1.926 2.018 2.111 2.204

Bulk Density (16-Sector) Image Oriented Top of Hole (U,R,B,L,U) (ROSI) (G/C3)

Bulk Density, Up (ROBU)

1 (G/C3) 2.65

Bulk Density, Right (ROBR) (G/C3)

1 2.65

DVDM Calibrated, Filtered Gamma Ray

Photoelectric Factor, Bottom (PEB)

Photoelectric Factor, Left (PEL)

Bulk Density, Bottom (ROBB)

Bulk Density, Left (ROBL) (G/C3)

(GRMA_FILT) (GAPI)	0	(---)	10	0	(---)	10
0	150					

1	(G/C3)	2.65	1	(G/C3)	2.65
---	--------	------	---	--------	------

IDEAL Version: ID10_2B_08
IDF

Density Dynamic Image

IDEAL Version: ID10_2B_08
IDF

Format: 5 MD VDN DYNAMIC IMAGE Vertical Scale: 1:240 Graphics File Created: 02-Oct-2005 11:47


DVDM
Calibrated,
Filtered
Gamma
Ray
(GRMA_FILT)
(GAPI)

0 150

Collar
Rotational
Speed
(CRPM)
(RPM)

0 200

Absent 1.370 1.462 1.555 1.648 1.740 1.833 1.926 2.018 2.111 2.204



DVDM Bulk Density (16-Sector) Image Oriented Top of Hole (U,R,B,L,U) (ROSI) (G/C3)

DVDM Bulk Density (16-Sector) Dynamic Image Oriented TOH (U,R,B,L,U) (ROSI_DYN) (---)

Thermal Neutron porosity (TNPH) (PU)

100 ----- 0

Image Derived Density Correction (IDDR) (G/C3)

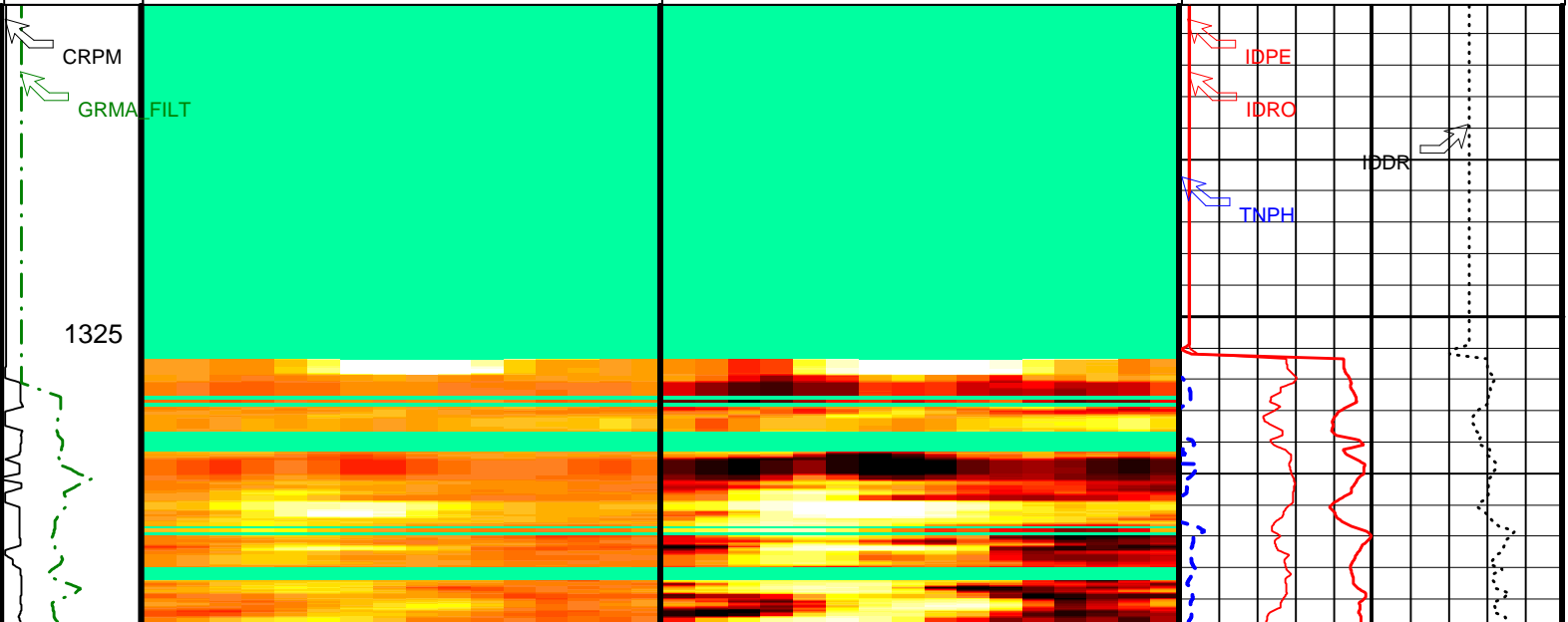
-0.8 ----- 0.2

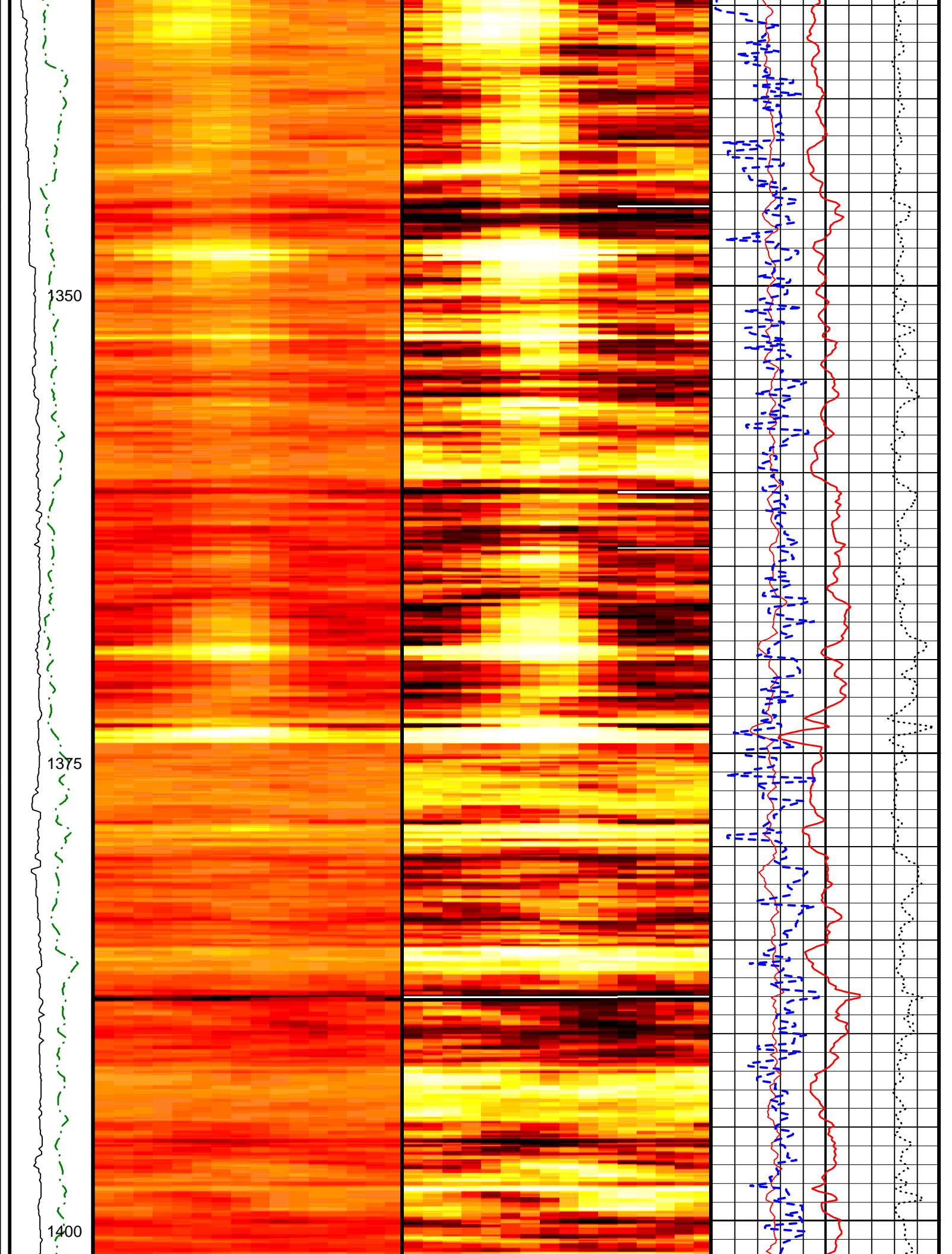
Image Derived Density (IDRO) (G/C3)

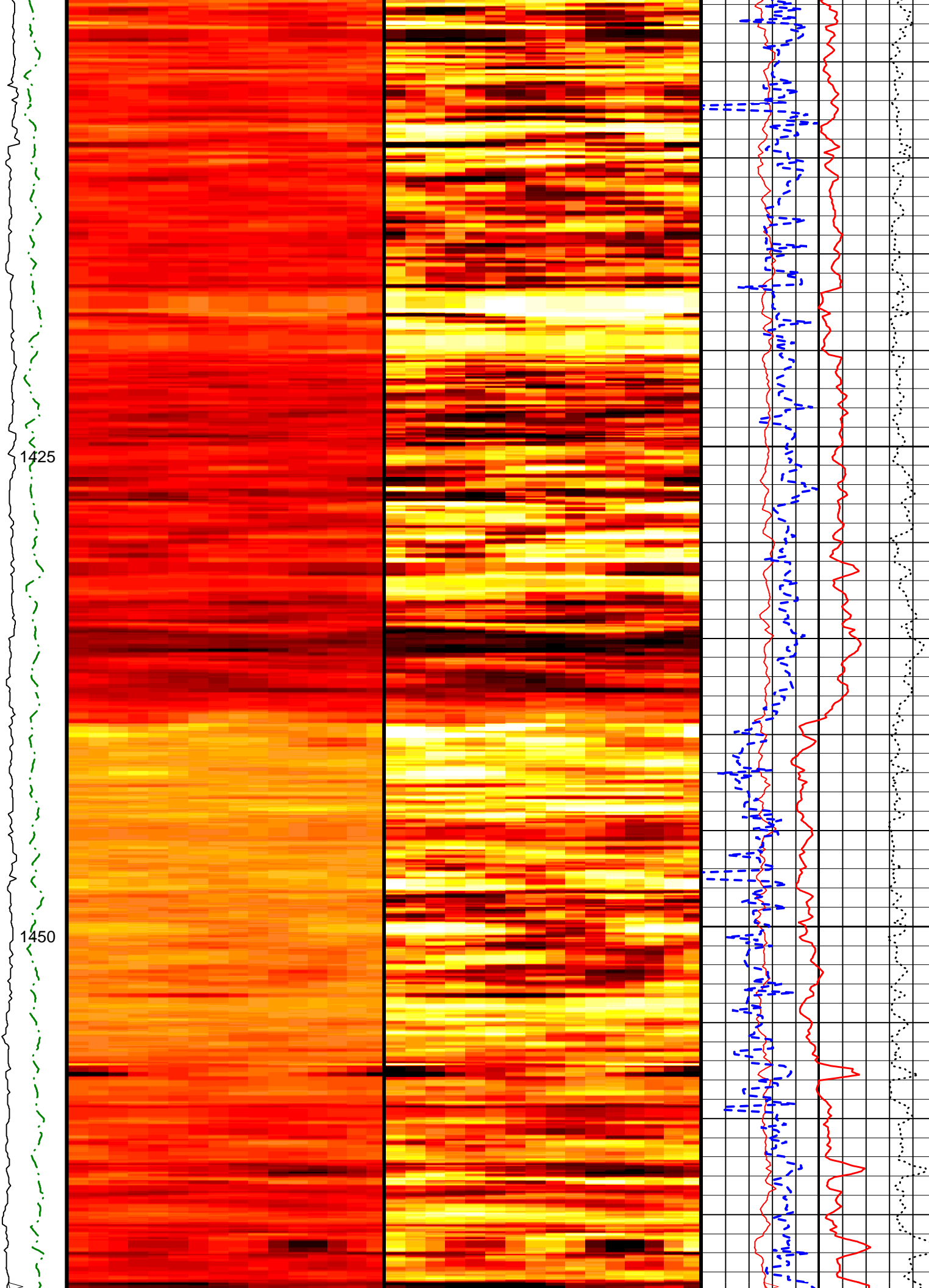
1 ----- 2.65

Image Derived Photoelectric Factor (IDPE) (---)

0 ----- 10

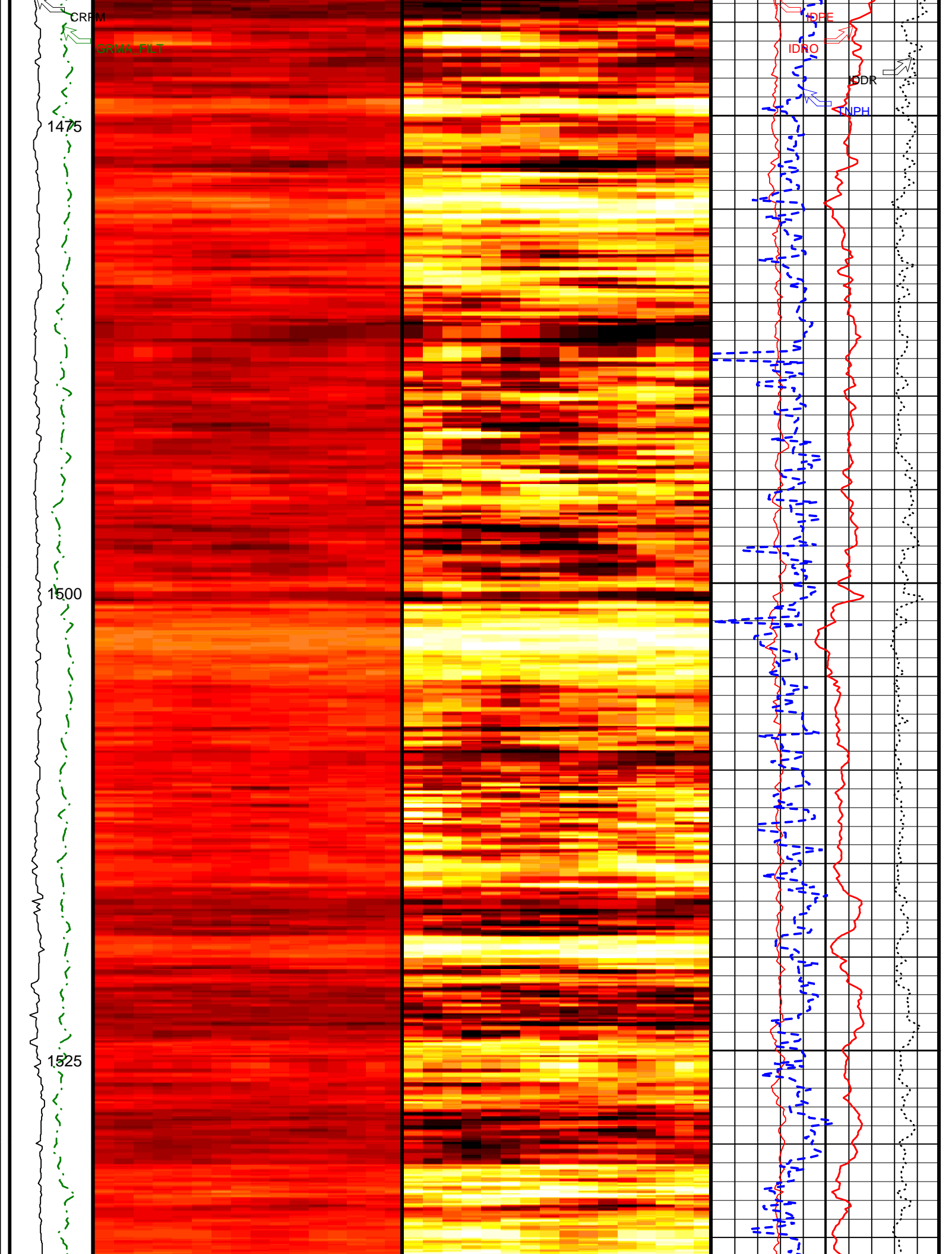


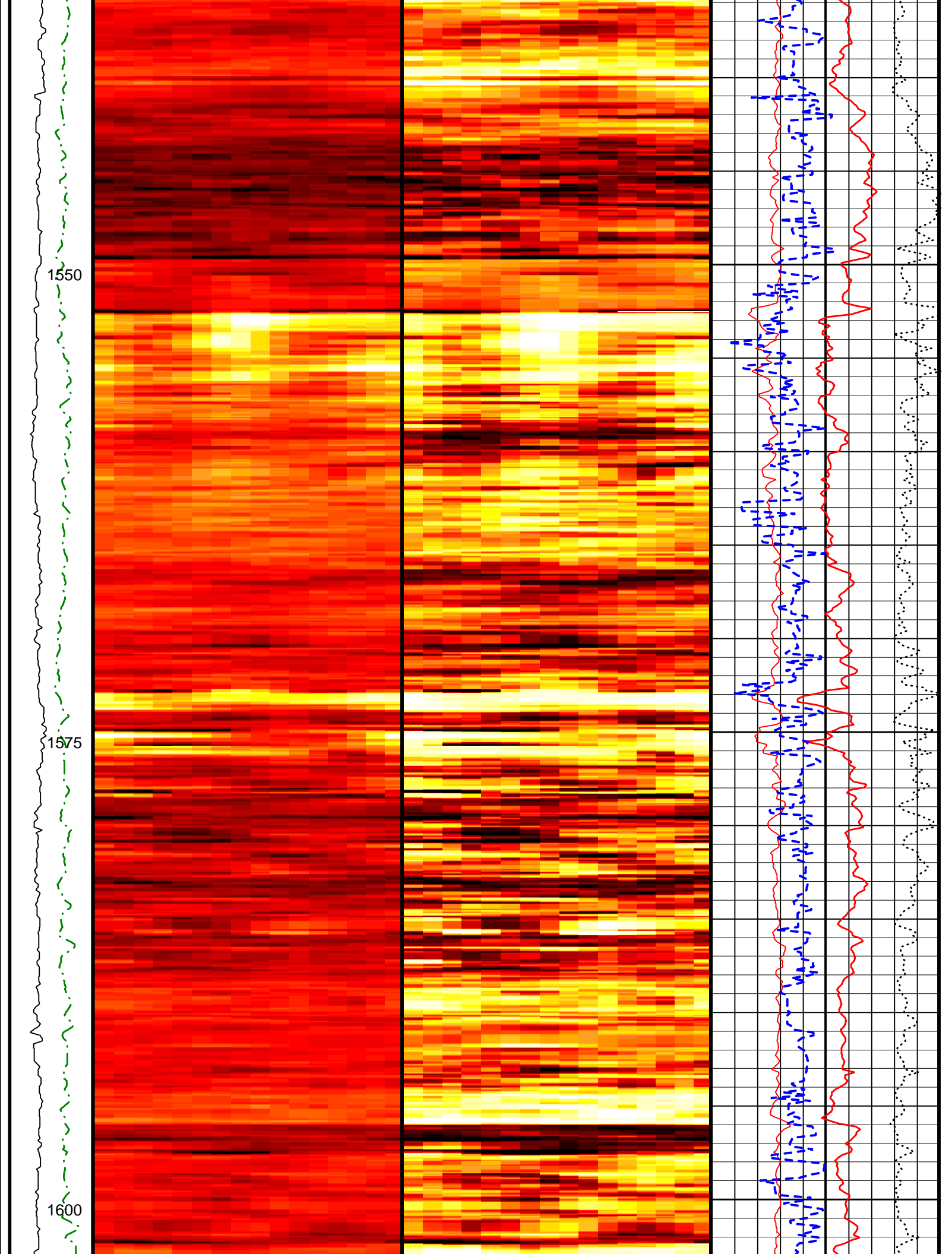




1425

1450

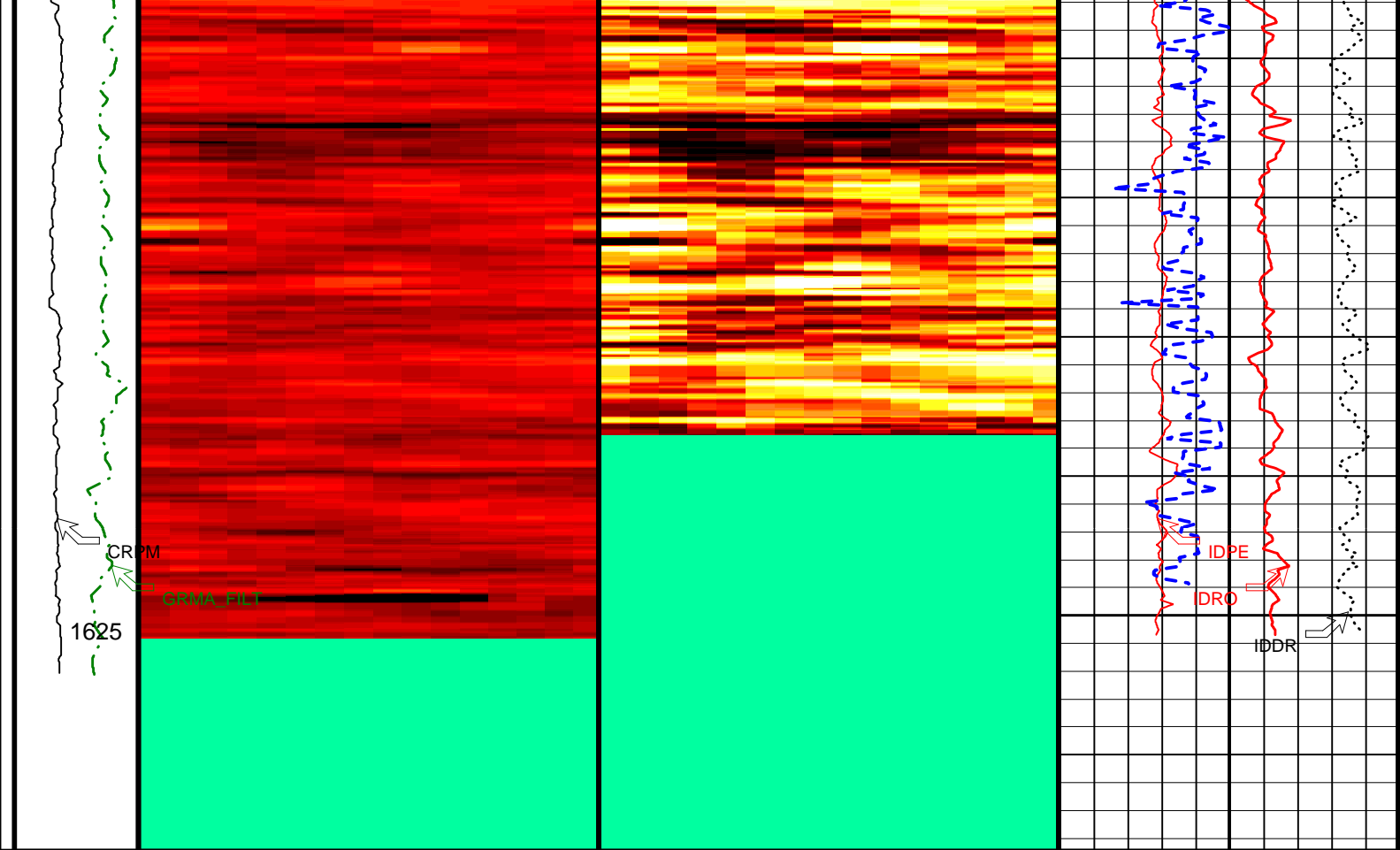




1550

1575

1600



Collar Rotational Speed (CRPM) (RPM)	0 200	1625
DVDM Bulk Density (16-Sector) Image Oriented Top of Hole (U,R,B,L,U) (ROSI_DYN) (G/C3)	Absent 1.370 1.462 1.555 1.648 1.740 1.833 1.926 2.018 2.111 2.204	
DVDM Bulk Density (16-Sector) Dynamic Image Oriented TOH (U,R,B,L,U) (ROSI_DYN) (G/C3)	Absent 1.370 1.462 1.555 1.648 1.740 1.833 1.926 2.018 2.111 2.204	
Image Derived Photoelectric Factor (IDPE)	0 (----) 10	

DVDM Calibrated, Filtered Gamma Ray (GRMA_FILT) (GAPI)	0 150	
Image Derived Density (IDRO) (G/C3)	1 (G/C3) 2.65	

Image Derived Density Correction (IDDR) (G/C3)	-0.8 (G/C3) 0.2	
Thermal Neutron porosity (TNPH) (PU)	100 (PU) 0	

IDEAL Version: ID10_2B_08
IDF

Company: Lamont-Doherty Borehole Research

Well: IODP Expedition 311 CAS-01B

Field: Cascadia Margin

Rig: JOIDES Resolution

State: Pacific Ocean

Schlumberger

EcoScope Density Neutron - Image

1:240 Measured Depth

Recorded Mode Log