

Company: Lamont-Doherty Borehole Research

Well: IODP Expedition 311 CAS-01B
 Field: Cascadia Margin
 JOIDES Resolution State: Pacific Ocean

GeoVISION Resistivity - Image

1:240 Measured Depth

Recorded Mode Log

Total depth:	1633 m	K.B.	10.06 m
Spud date:	23-Sep-2005	G.L.	-1323 m
Runs:	1 To 1	D.F.	9.60 m
Permanent datum:	MEAN SEA LEVEL	Elev.:	0 m
Log measured from:	Kelly Bushing	10.06 m above Perm. datum	
Depth reference:	Driller's Depth		

Location		Elevation	
Service Order no.	NAD 27	Longitude	Latitude
40012416	UTM Zone 10 N	W 126.86540	N 48.69806

Rig:	JOIDES Resolution		
Field:	Cascadia Margin		
Location:	Vancouver Island		
Well:	IODP Expedition 311 CAS-01B		
Company:	Lamont-Doherty Borehole Research		
Depth logged:	1333 m	To 1632 m	Mag decl: 18.83 deg.
Date logged:	23-Sep-05	To 24-Sep-05	Mag dip: 69.24 deg.
		Other services: EcoScope, sonicVISION, provision	

Hole size	Bore hole record		Casing record			
	from	to	Size	Density	from	to
9.875 in.	1333 m	1633 m				

Surface equipment		Software record			
Unit	TWIS	IDEAL Wis	ID10_2C_01		
Depth system	Geograph	SPM	hspm10_1c_05		
		LWD	See Remarks		
		MWD	9.0_C03		

IDEAL Version: ID10_2B_08

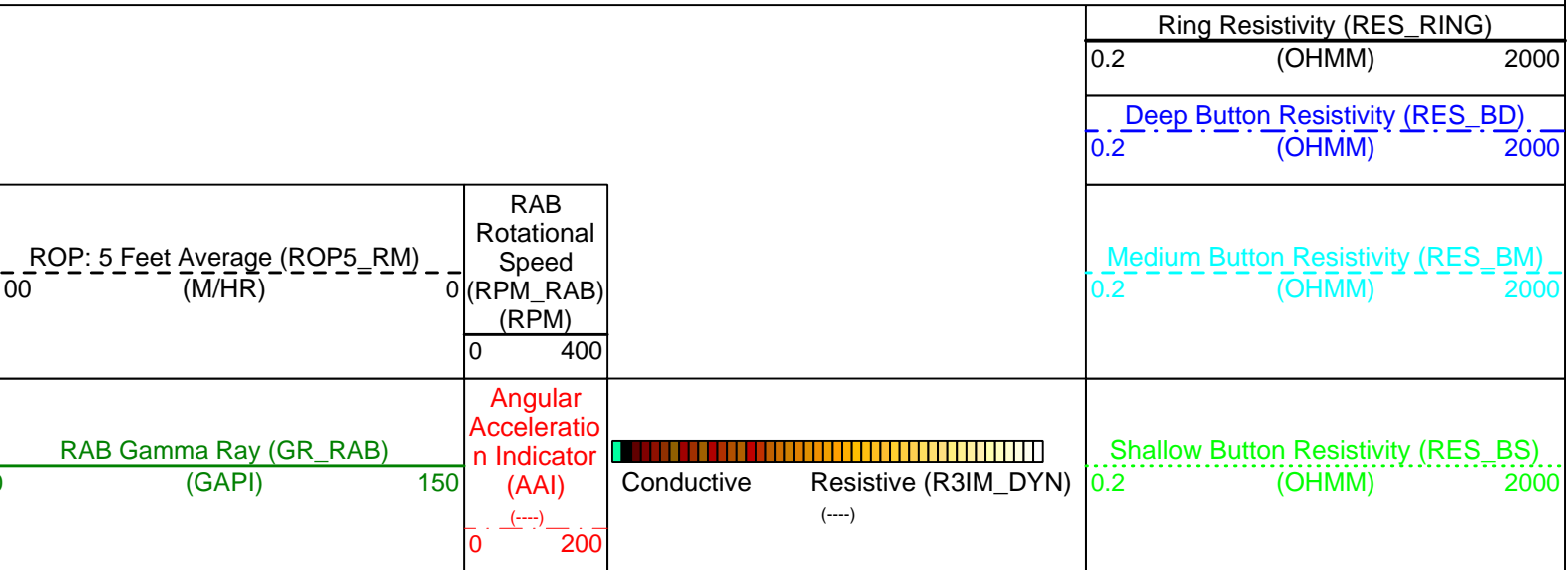
IDF

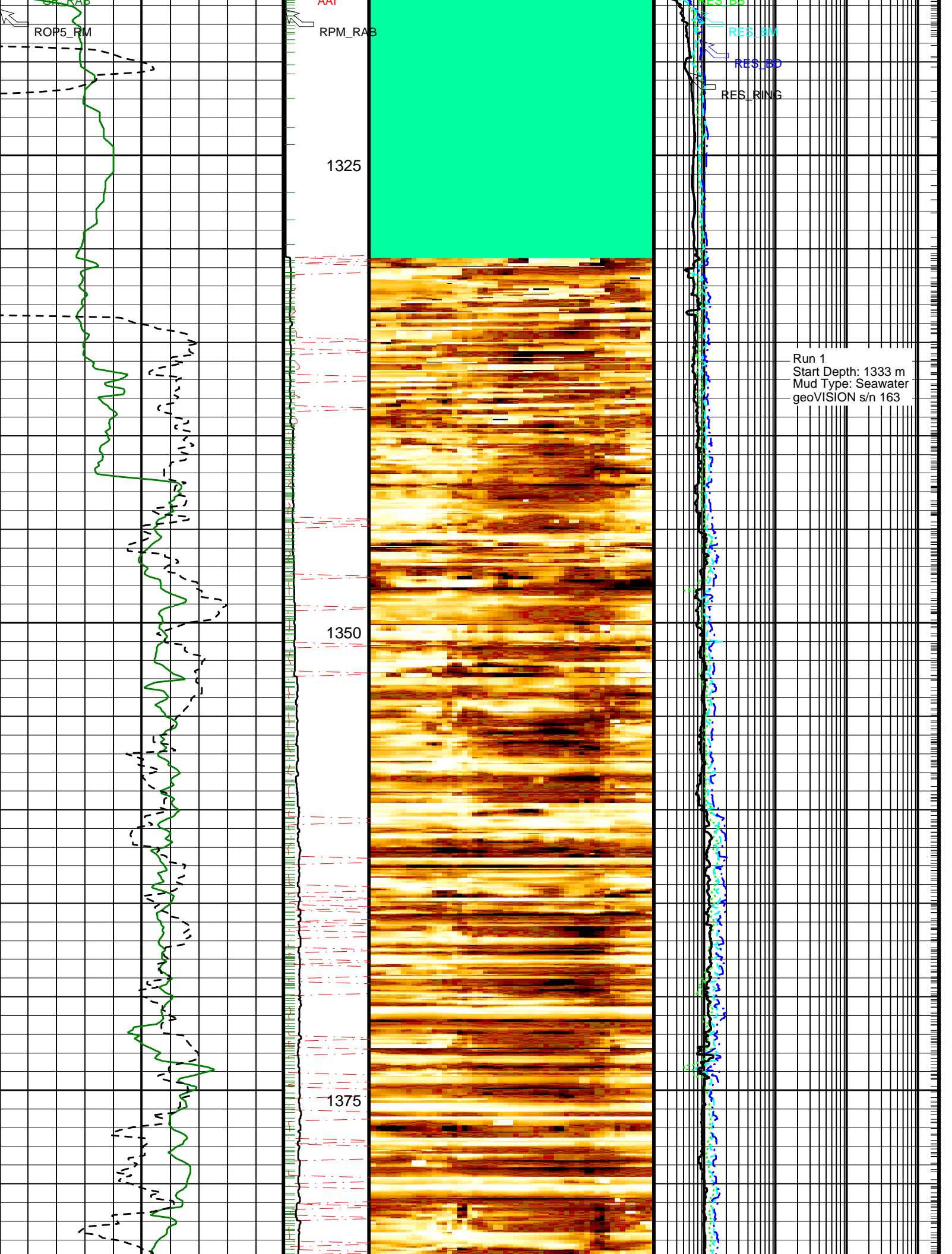
Format: 5 MD GVR DEPTH IMAGE Vertical Scale: 1:240 Graphics File Created: 02-Oct-2005 12:13

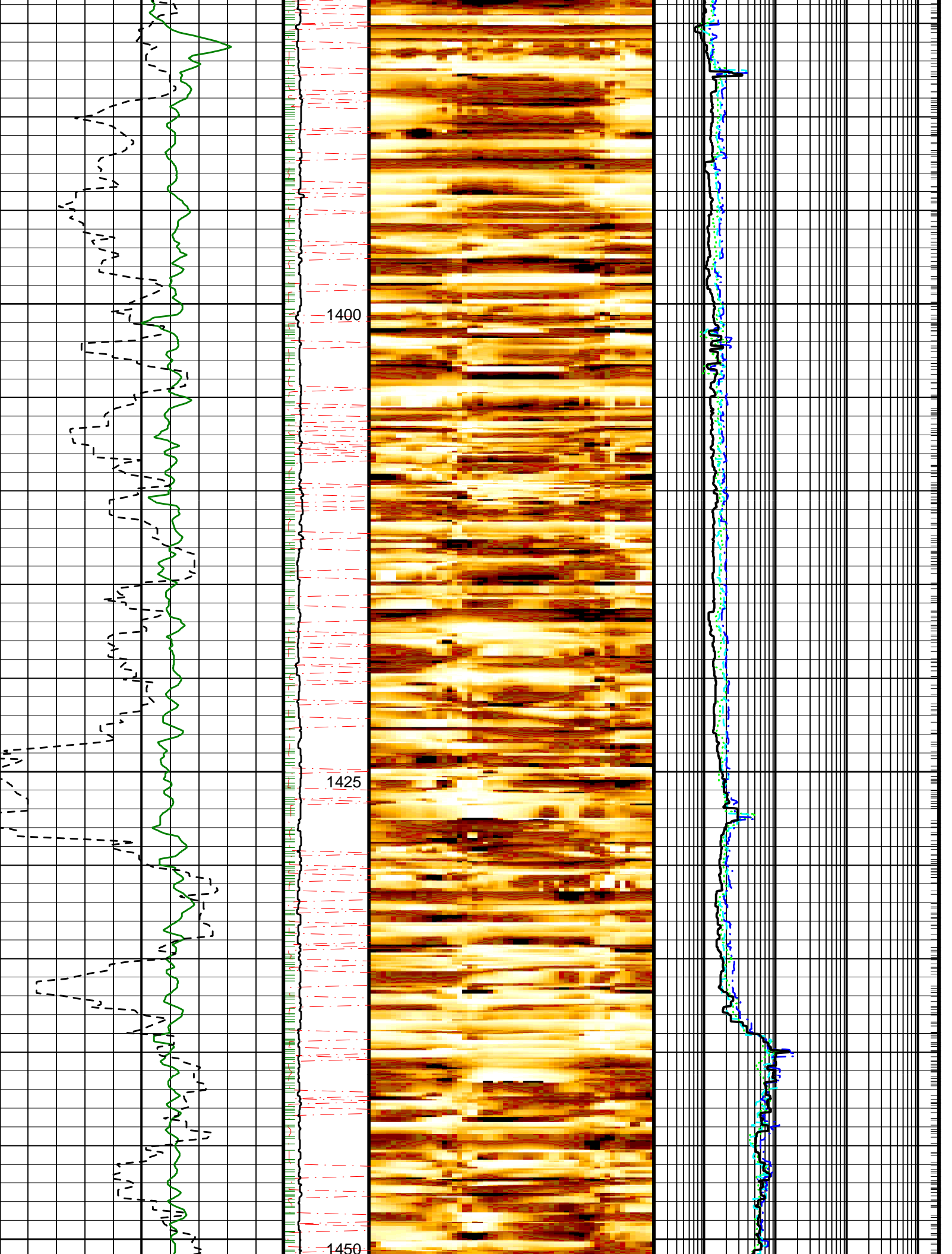
PIP SUMMARY

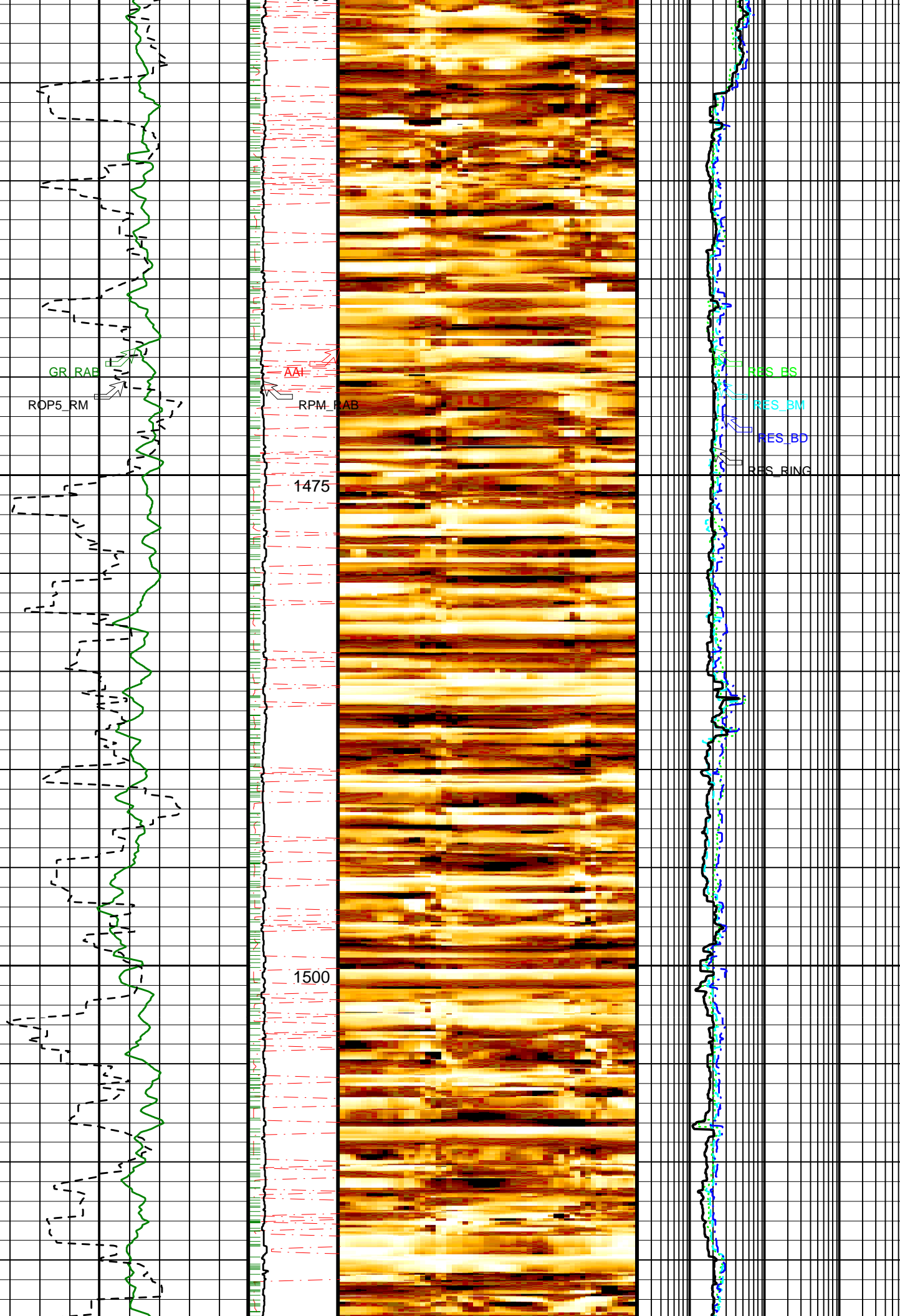
Ring Samples

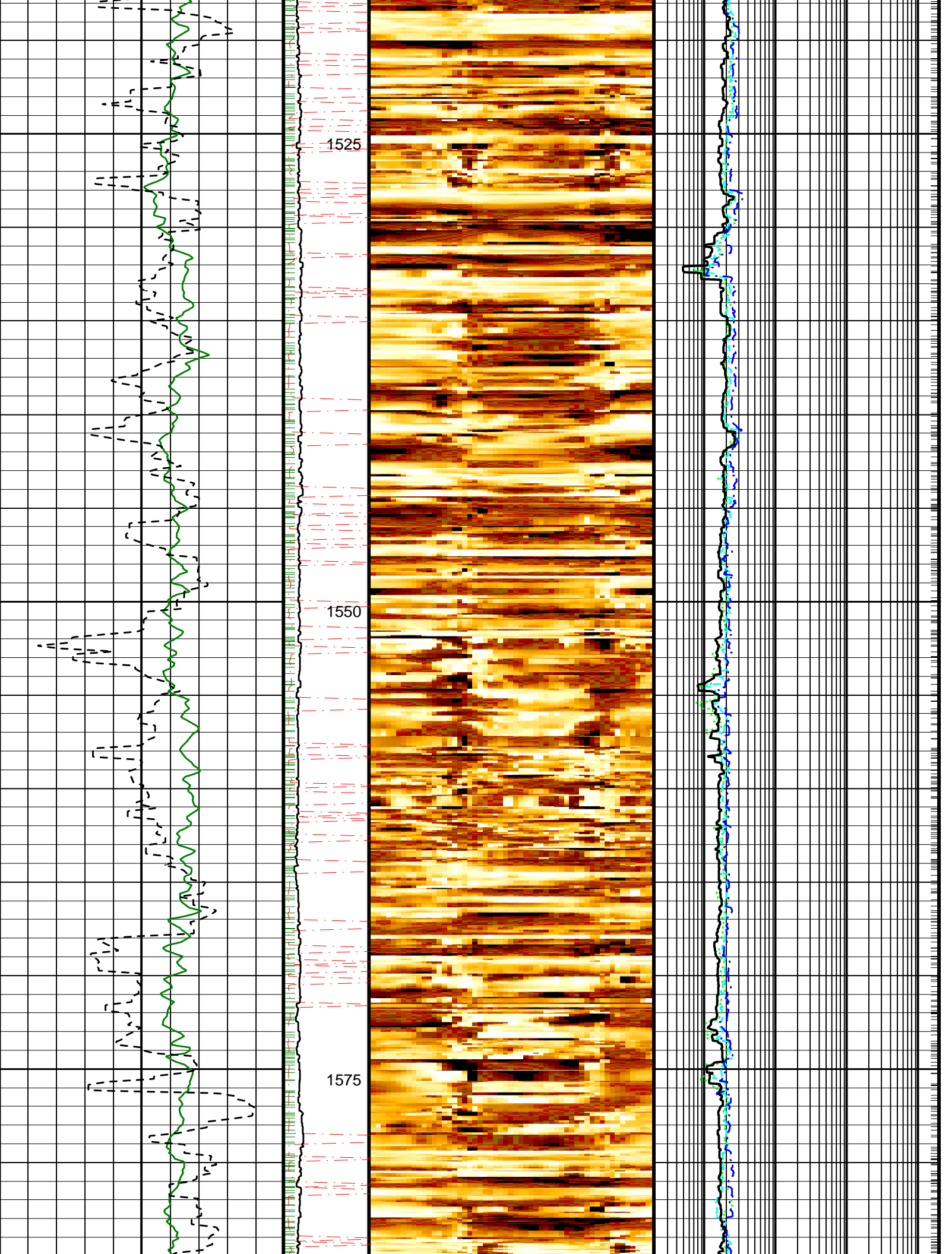
Gamma Ray Samples

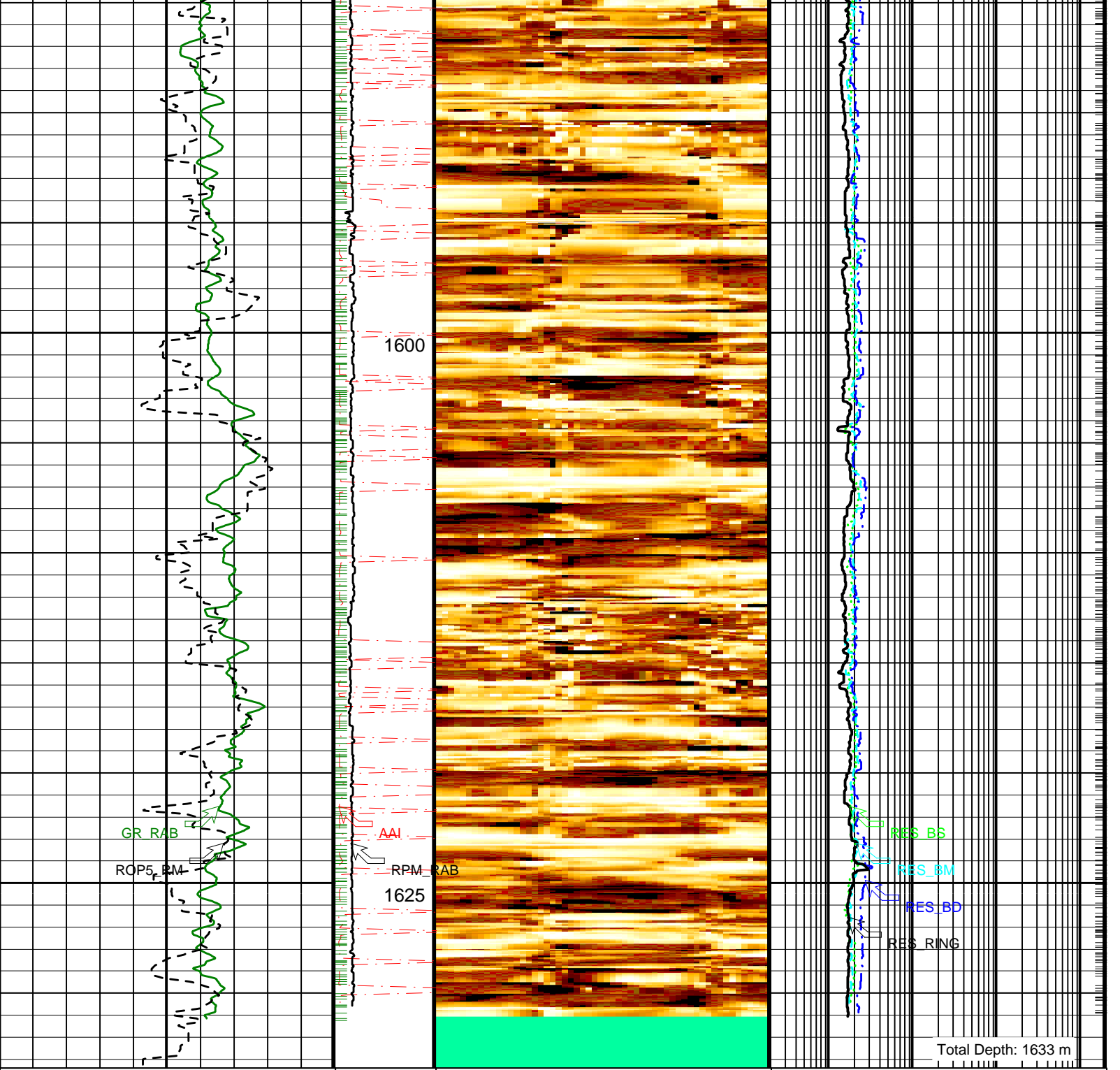












<p>RAB Gamma Ray (GR_RAB) (GAPI)</p> <p>0 150</p>	<p>Angular Acceleration Indicator (AAI)</p> <p>0 200</p>	<p>Shallow Button Resistivity (RES_BS) (OHMM)</p> <p>0.2 2000</p>
<p>ROP: 5 Feet Average (ROP5_RM) (M/HR)</p> <p>100 0</p>	<p>RAB Rotational Speed (RPM_RAB) (RPM)</p> <p>0 400</p>	<p>Medium Button Resistivity (RES_BM) (OHMM)</p> <p>0.2 2000</p>
		<p>Deep Button Resistivity (RES_BD) (OHMM)</p> <p>0.2 2000</p> <p>Ring Resistivity (RES_RING) (OHMM)</p> <p>0.2 2000</p>

Gamma Ray Samples

IDEAL Version: ID10_2B_08

IDF

IDEAL Version: ID10_2B_08

IDF

Format: GEOVIS_RES_DYN_IMAGE

Vertical Scale: 1:240

Graphics File Created: 02-Oct-2005 12:18

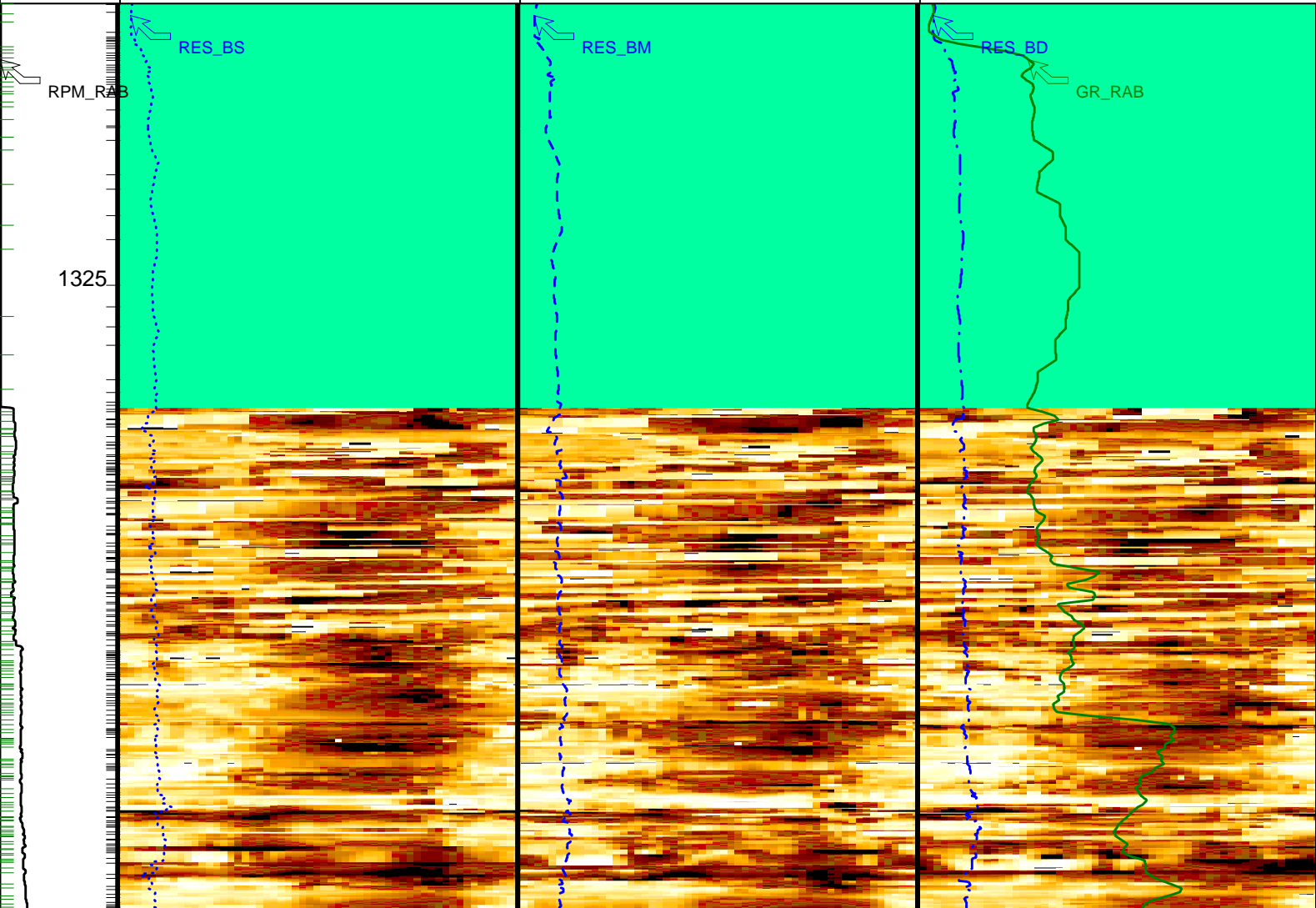
PIP SUMMARY

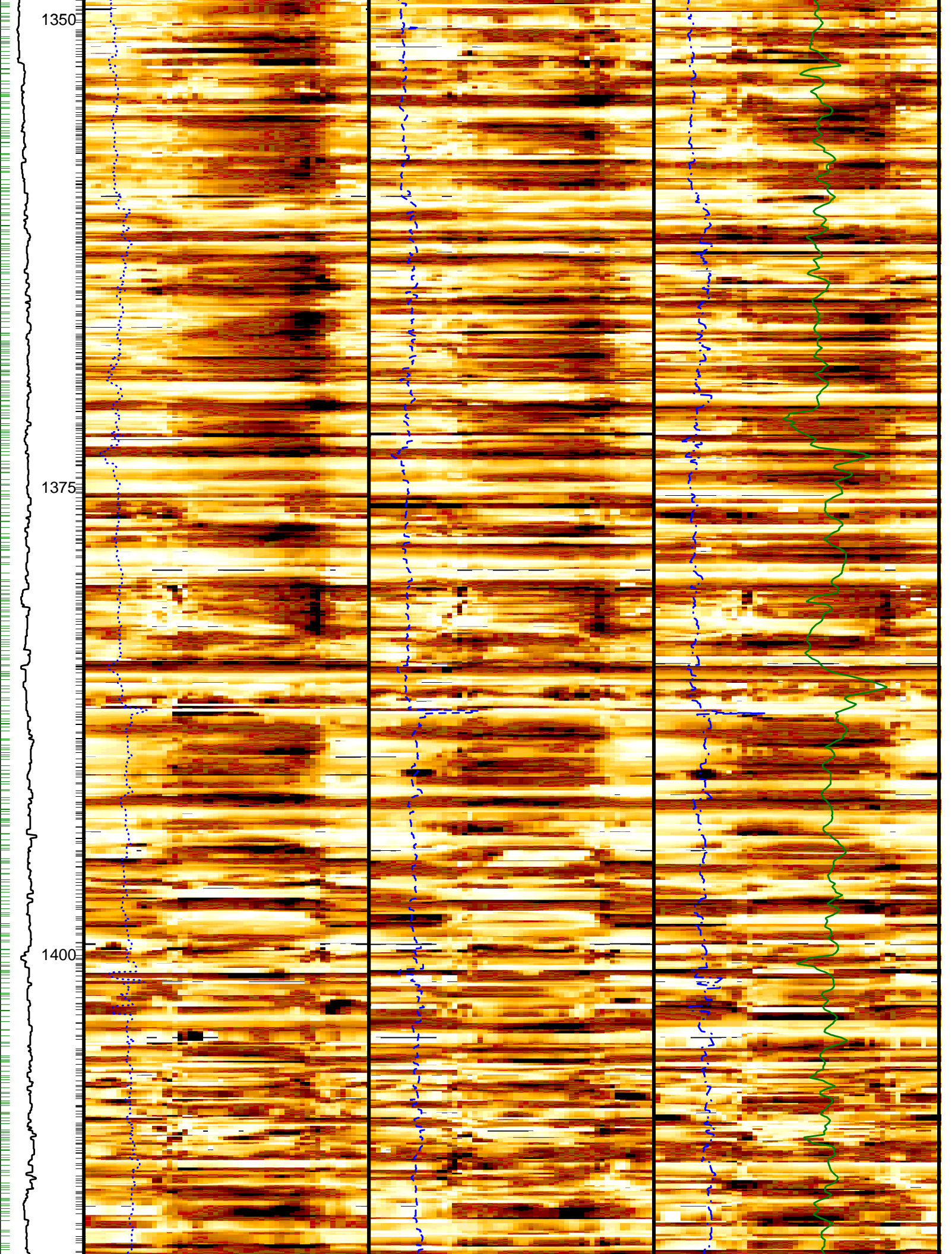
Ring Samples

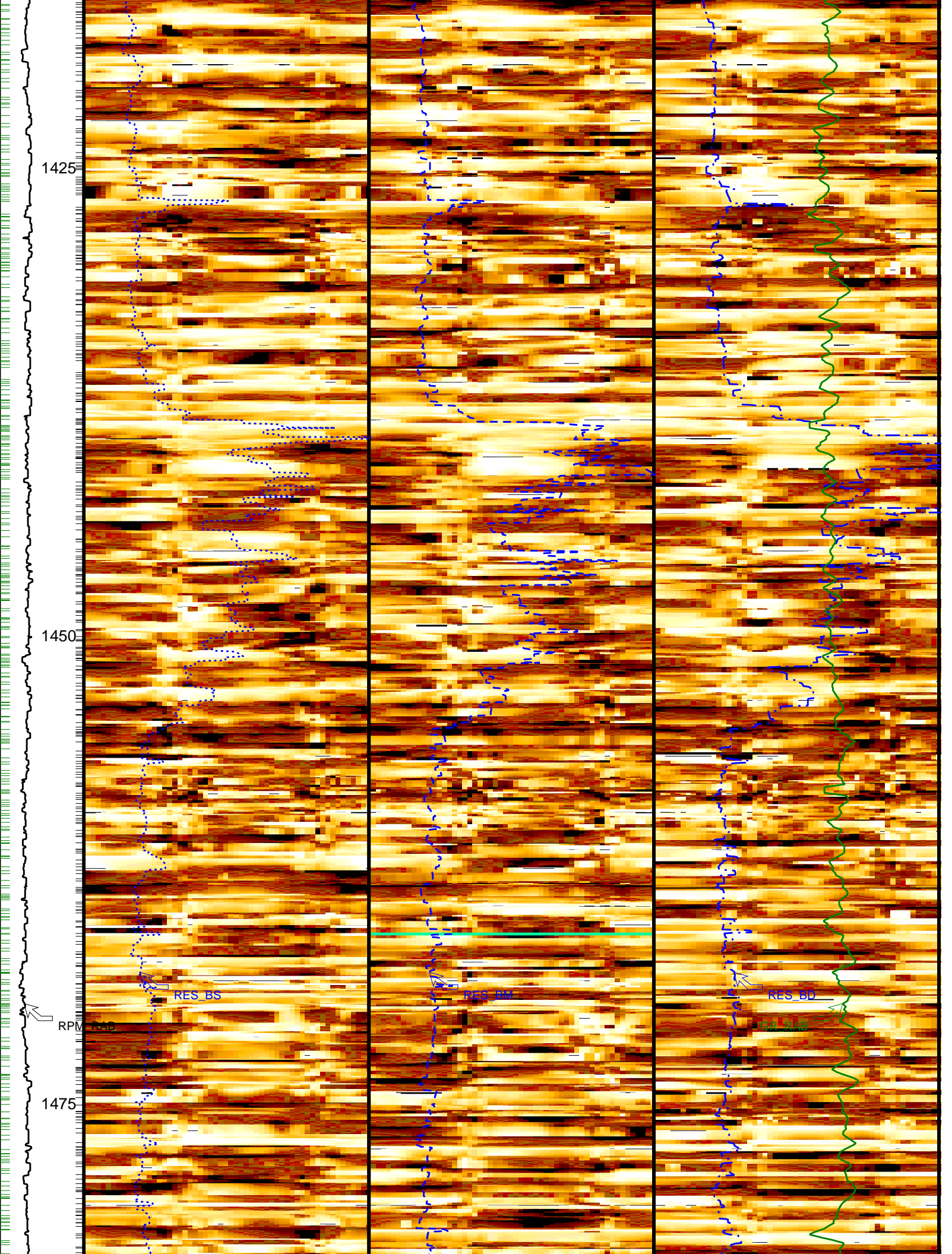
Gamma Ray Samples

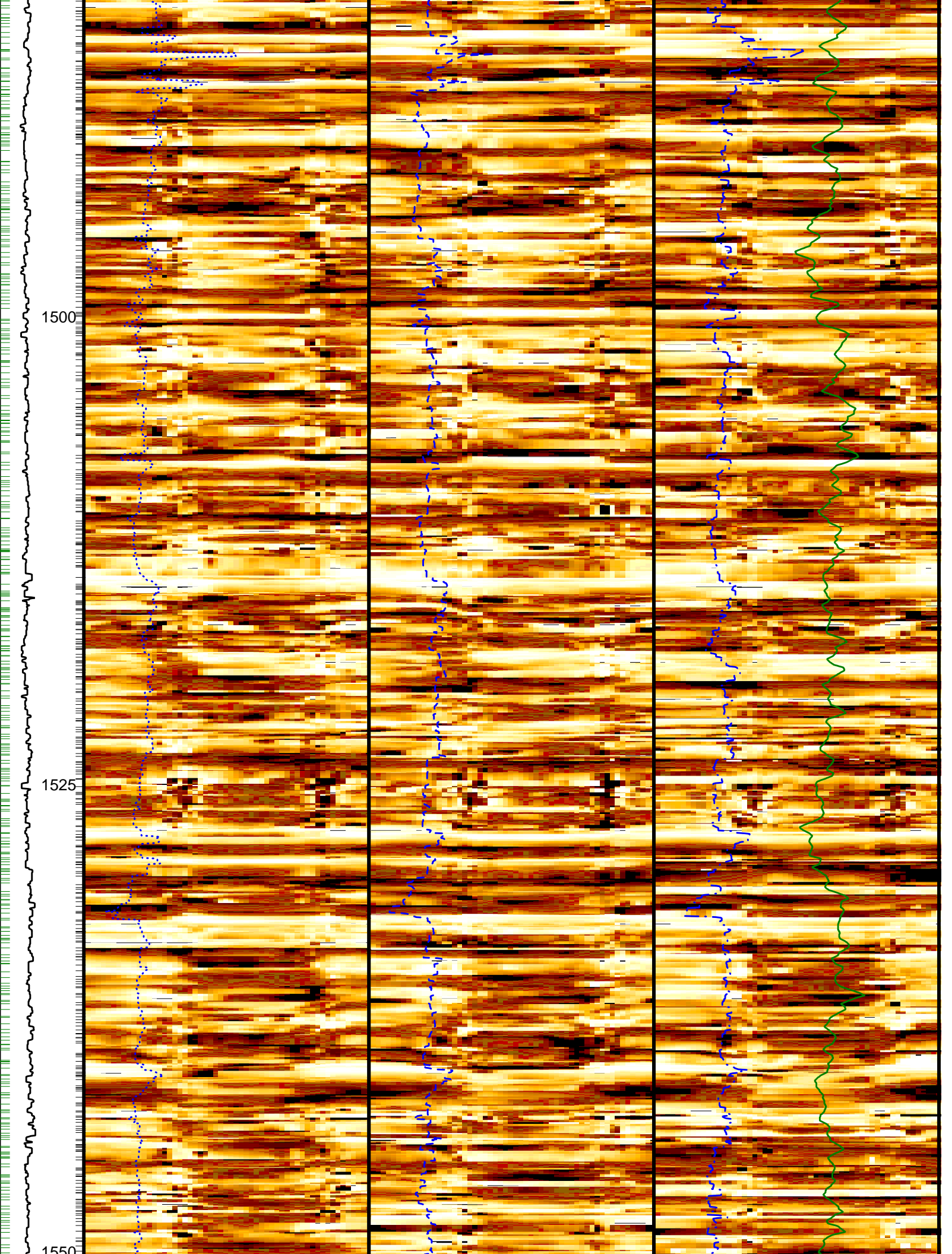


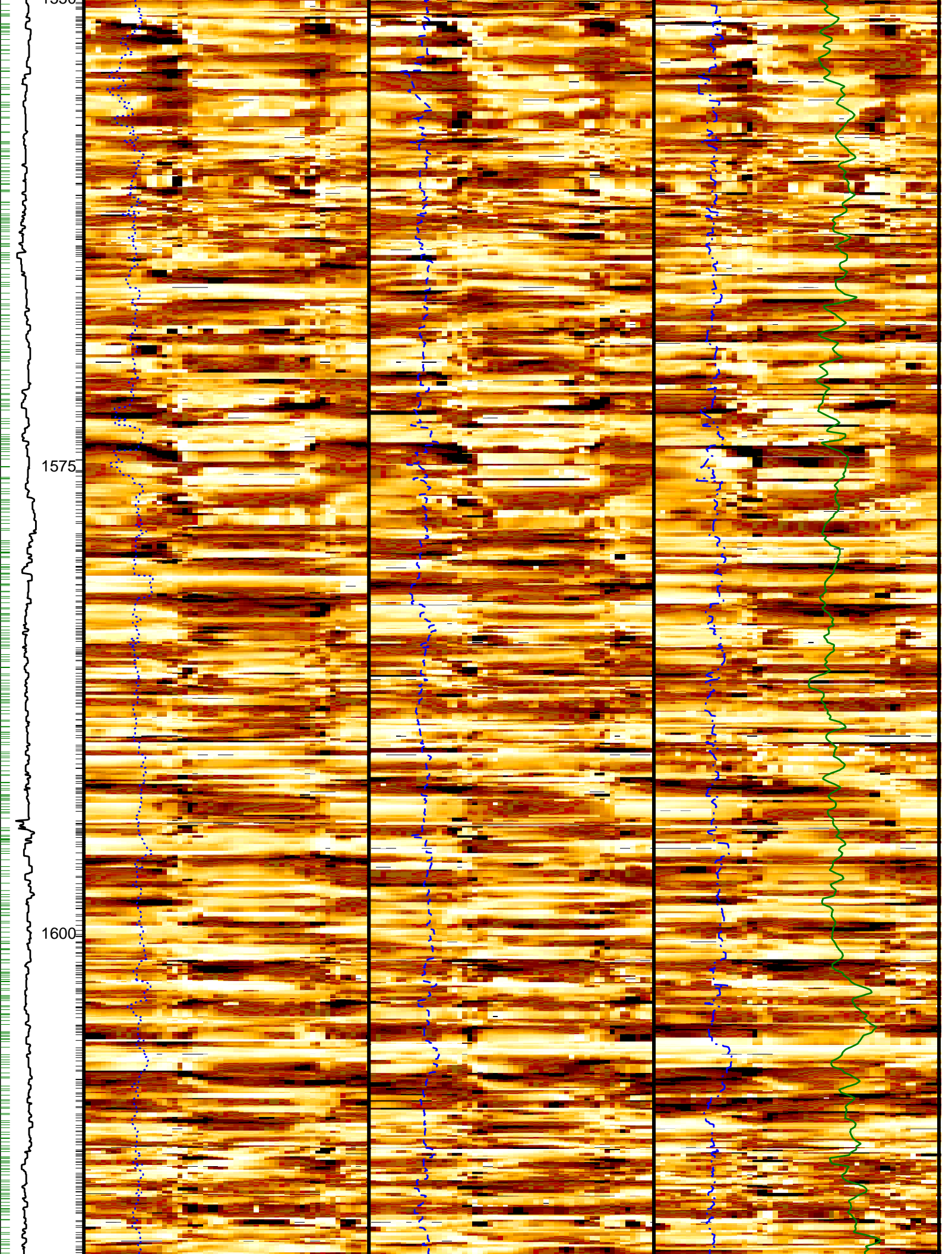
RAB Rotational Speed (RPM_RAB) (RPM) 0 200	Conductive Resistive (R1IM_DYN) (---)	Conductive Resistive (R2IM_DYN) (---)	RAB Gamma Ray (GR_RAB) (GAPI) 0 150
	Angular Acceleration Indicator (AAI) (---) 0 200	Shallow Button Resistivity (RES_BS) (OHMM) 0 100	Medium Button Resistivity (RES_BM) (OHMM) 0 100

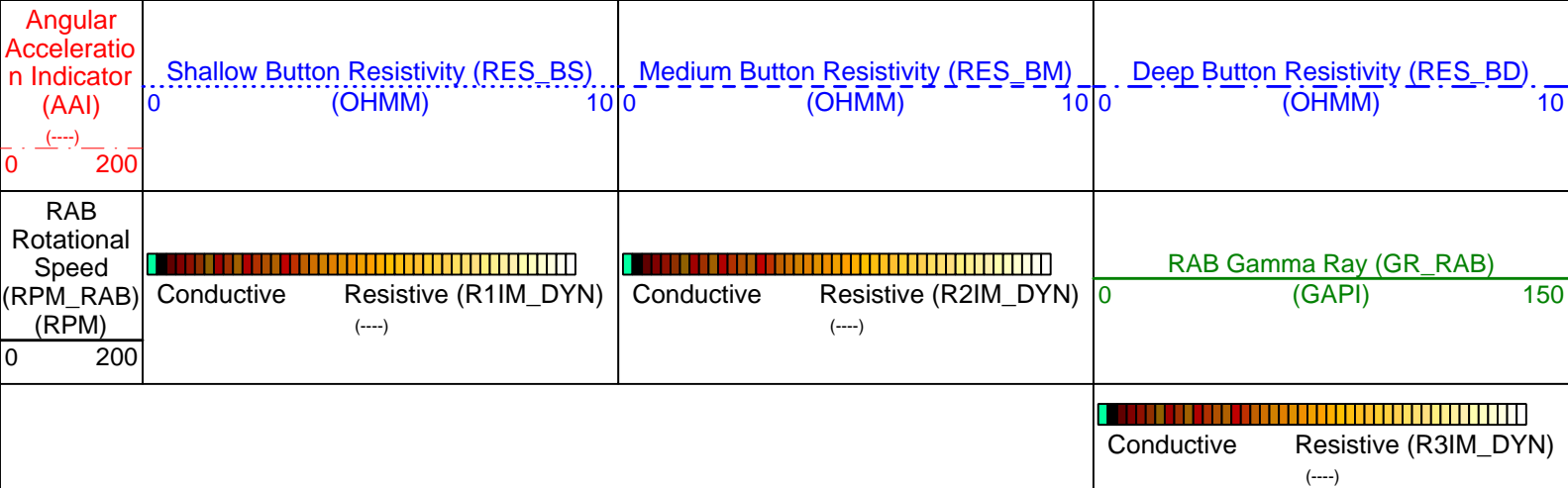
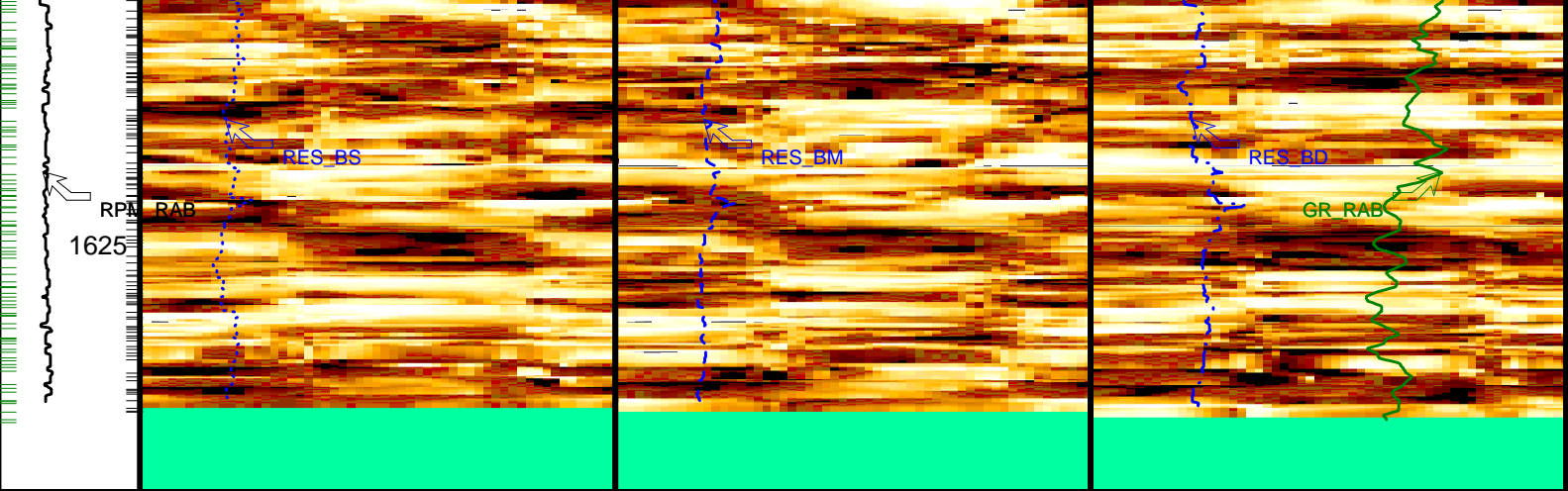












PIP SUMMARY

— Ring Samples
 — Gamma Ray Samples

IDEAL Version: ID10_2B_08
 IDF

Company: Lamont-Doherty Borehole Research
 Well: IODP Expedition 311 CAS-01B
 Field: Cascadia Margin
 Rig: JOIDES Resolution
 State: Pacific Ocean



GeoVISION Resistivity - Image
 1:240 Measured Depth
 Recorded Mode Log

