

GR_RAB

ROP5_RM

RPM_RAB

RES_BM

RES_BD

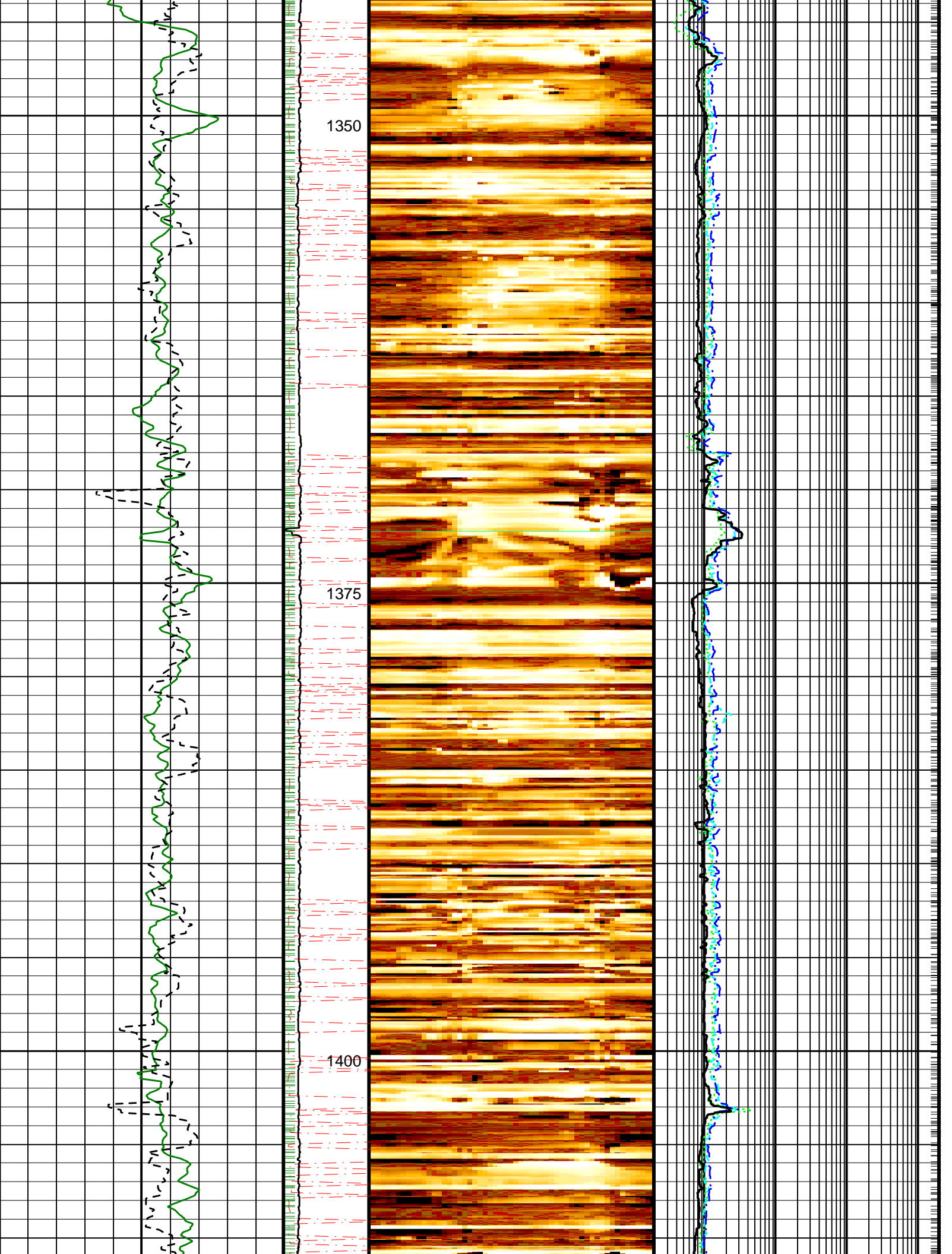
RES_RING

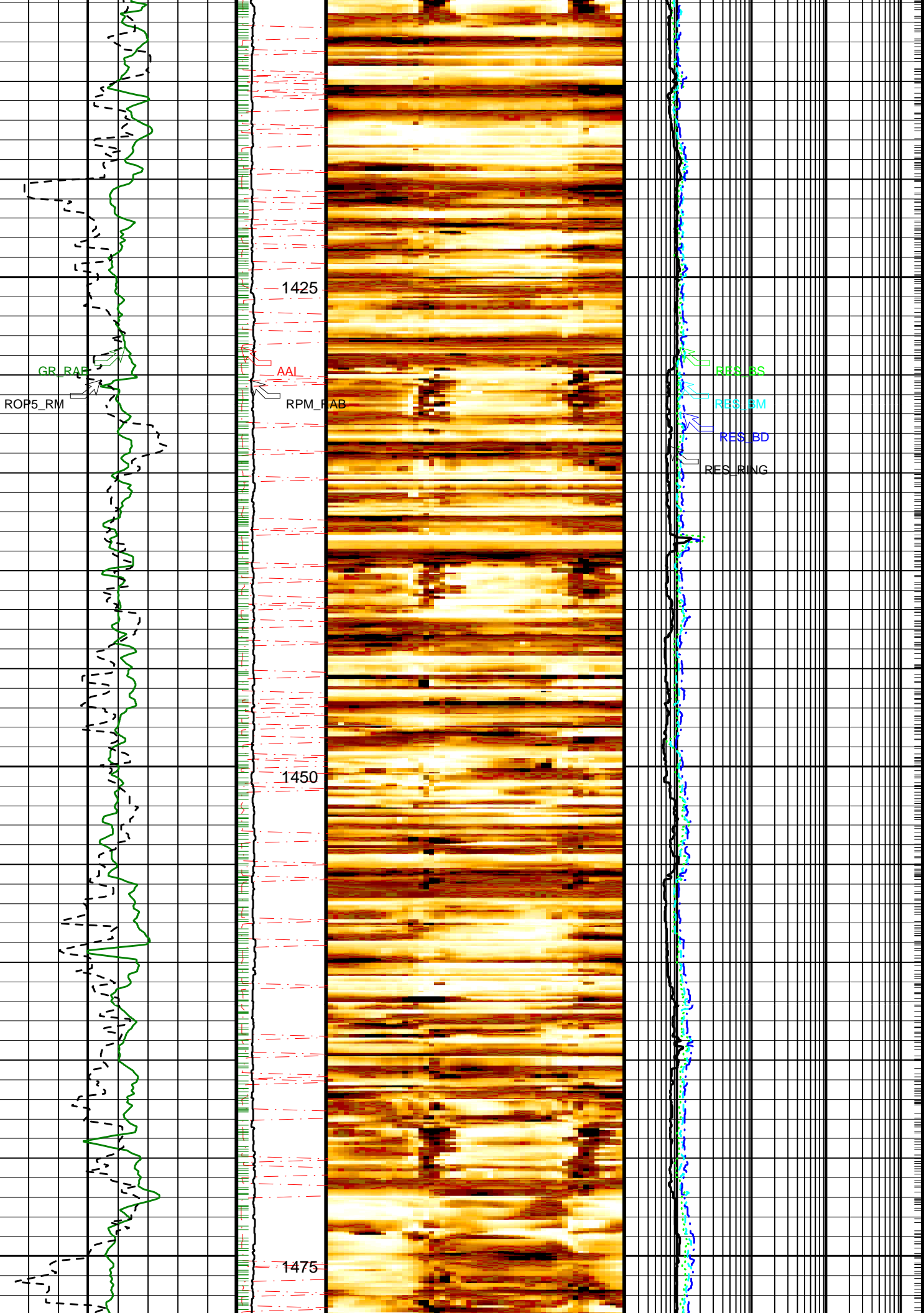
1300

1325

Run 1
Start Depth: 1279 m
Mud Type: Seawater
geoVISION s/n 163

AAI





1425

GR_RAB

ROP5_RM

AAL

RPM_RAB

RES_8S

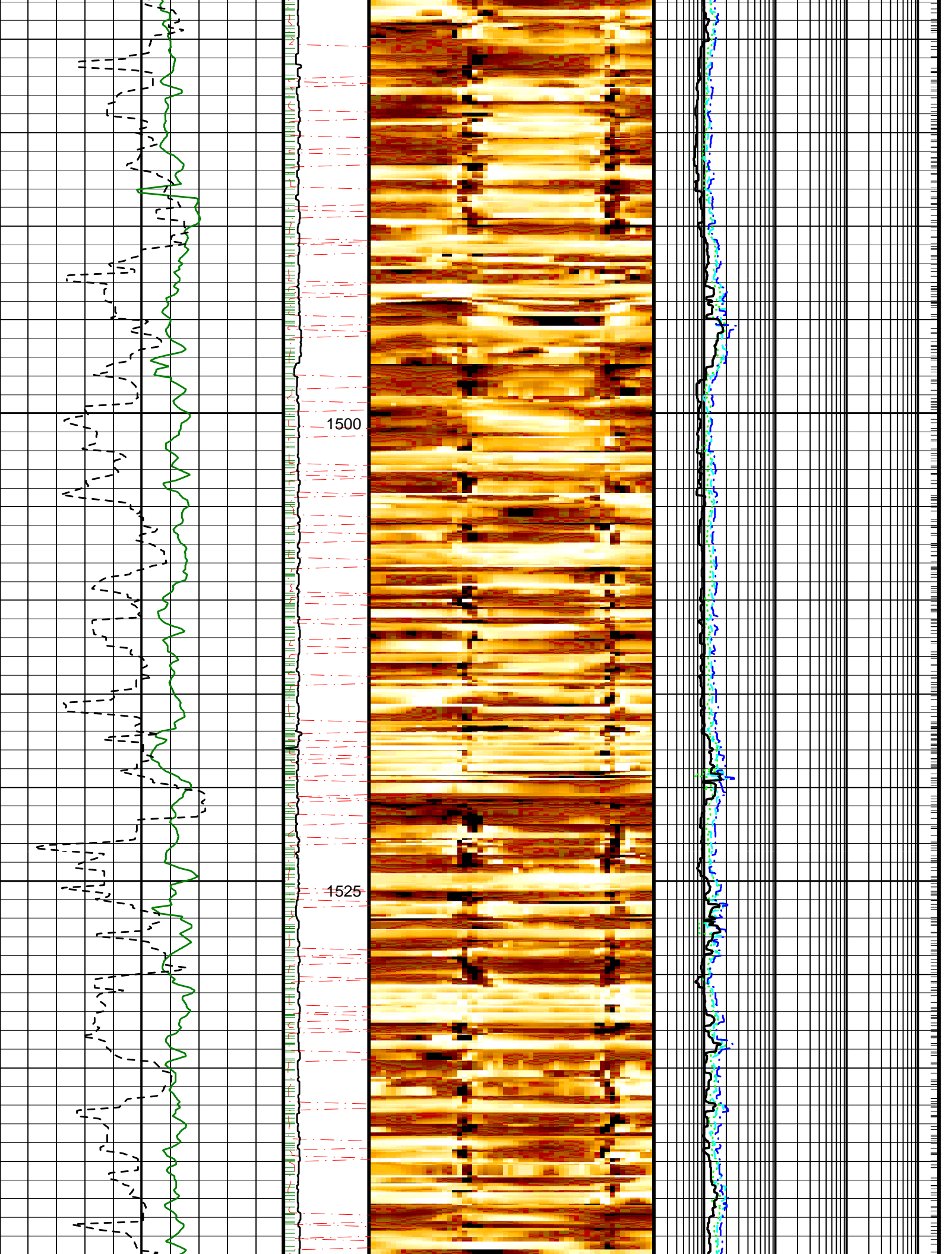
RES_8M

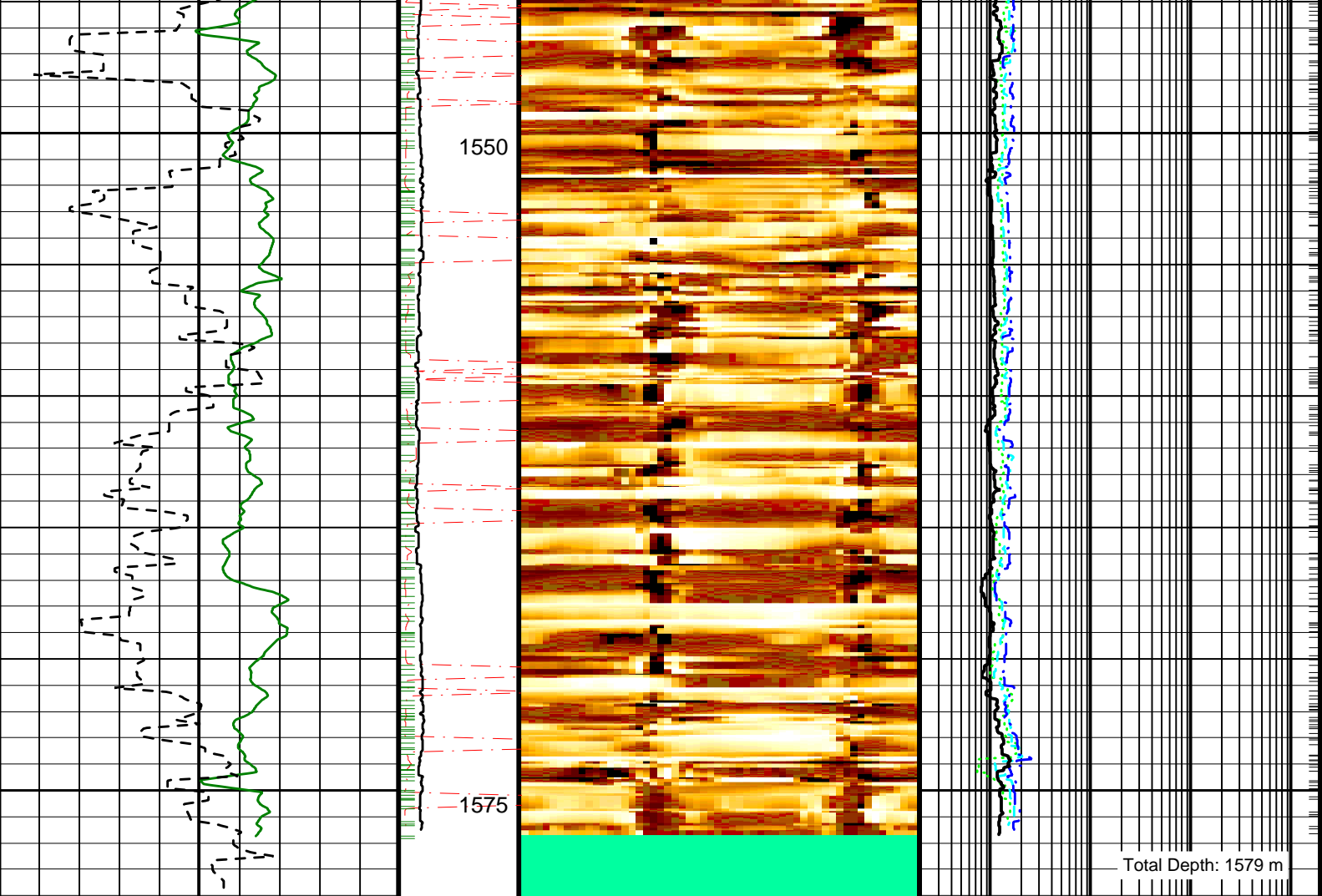
RES_8D

RES_RING

1450

1475





Total Depth: 1579 m

<p>RAB Gamma Ray (GR_RAB) (GAPI)</p> <p>0 150</p>	<p>Angular Acceleration Indicator (AAI)</p> <p>(---)</p> <p>0 200</p>	<p>Conductive Resistive (R3IM_DYN)</p> <p>(---)</p>	<p>Shallow Button Resistivity (RES_BS) (OHMM)</p> <p>0.2 2000</p>
<p>ROP: 5 Feet Average (ROP5_RM) (M/HR)</p> <p>100 0</p>	<p>RAB Rotational Speed (RPM_RAB) (RPM)</p> <p>0 400</p>		<p>Medium Button Resistivity (RES_BM) (OHMM)</p> <p>0.2 2000</p>
			<p>Deep Button Resistivity (RES_BD) (OHMM)</p> <p>0.2 2000</p>
			<p>Ring Resistivity (RES_RING) (OHMM)</p> <p>0.2 2000</p>

PIP SUMMARY

Gamma Ray Samples

Ring Samples

IDEAL Version: ID10_2B_08
IDF

IDEAL Version: ID10_2B_08
IDF

Ring Samples
Gamma Ray Samples



RAB
Rotational
Speed
(RPM_RAB)
(RPM)



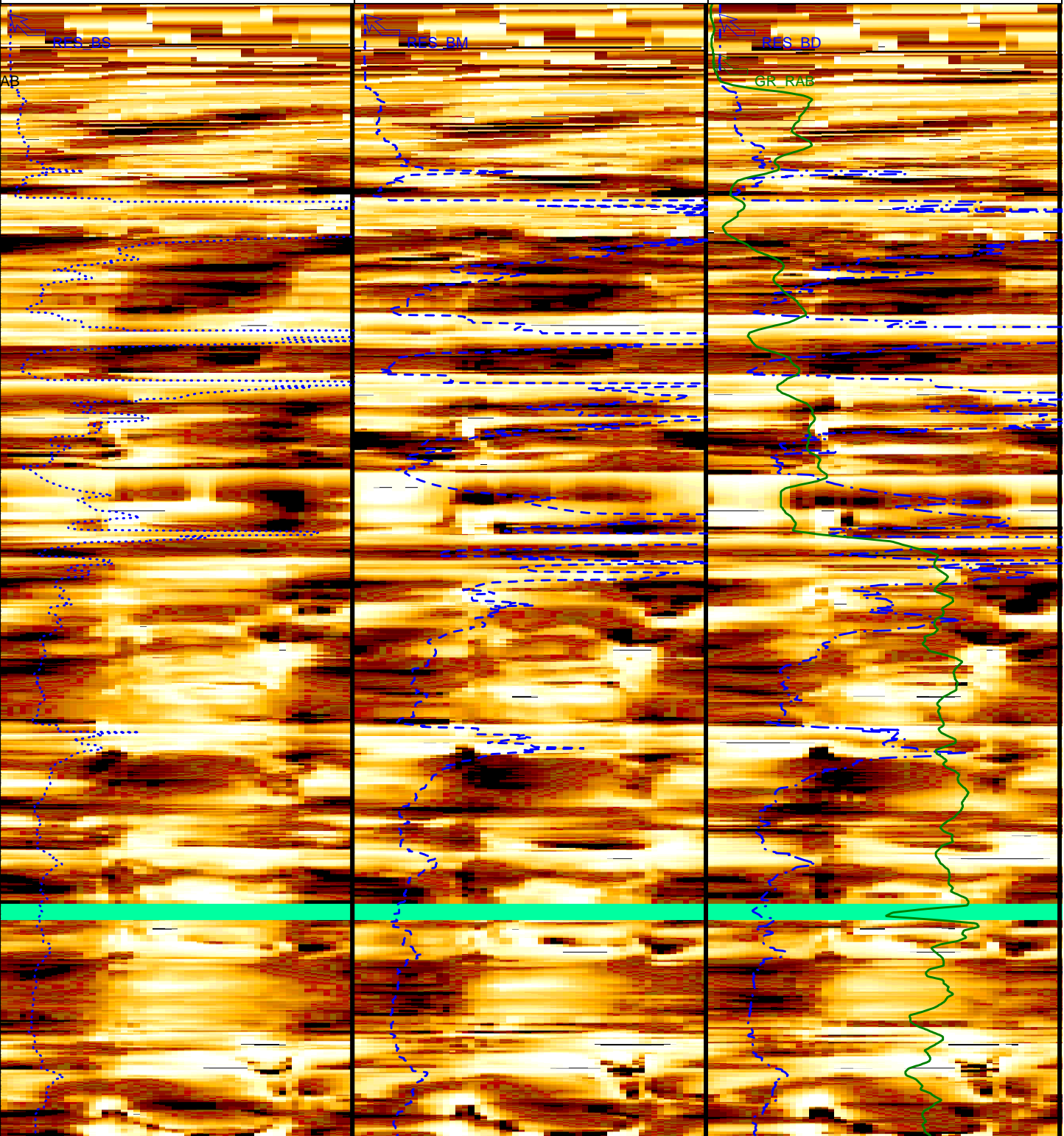
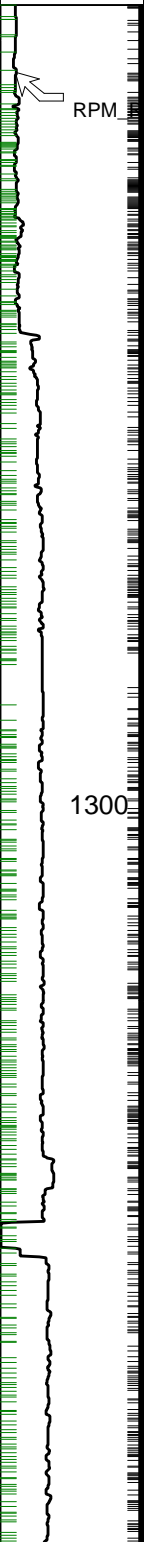
RAB Gamma Ray (GR_RAB)
(GAPI)

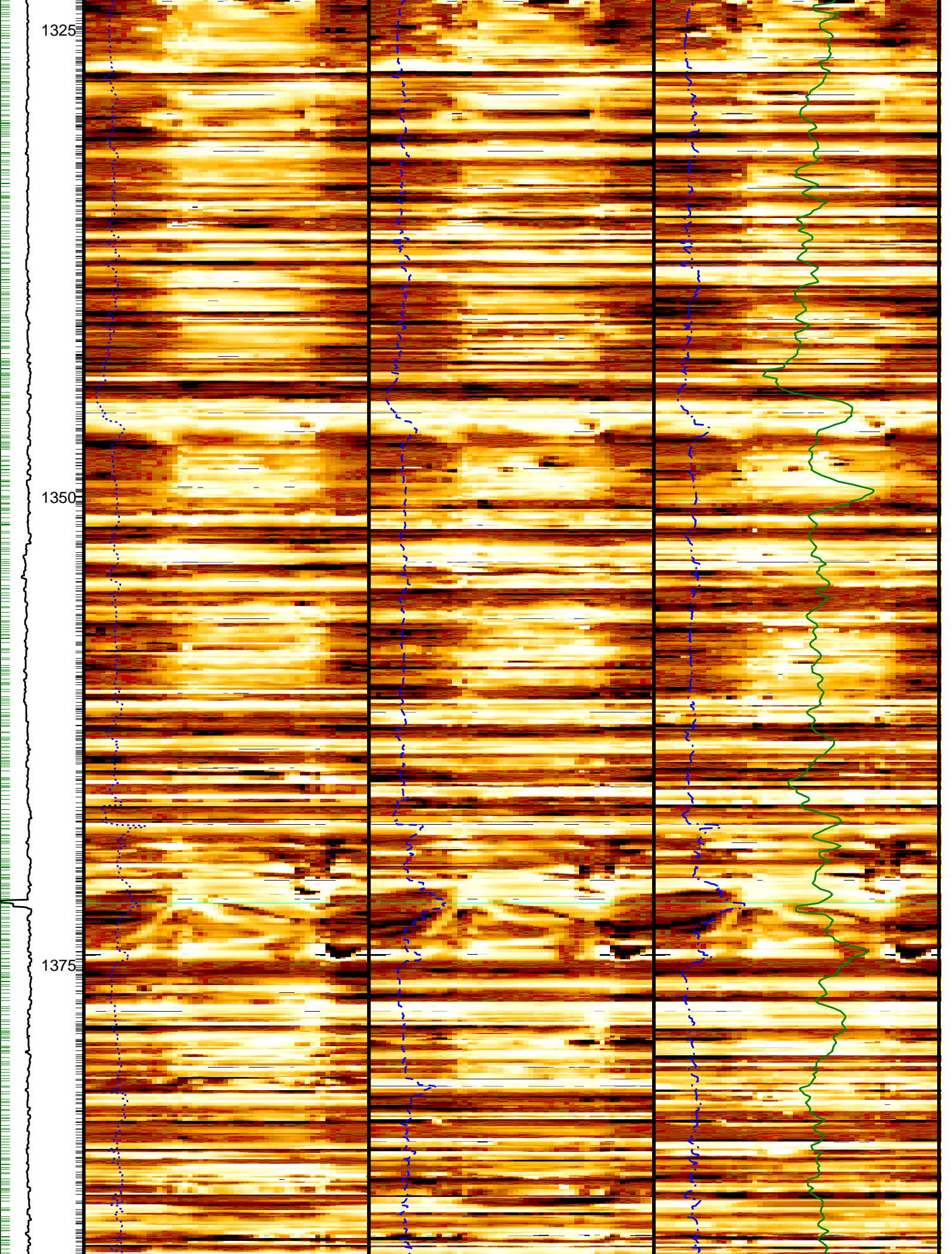
Angular
Acceleratio
n Indicator
(AAI)

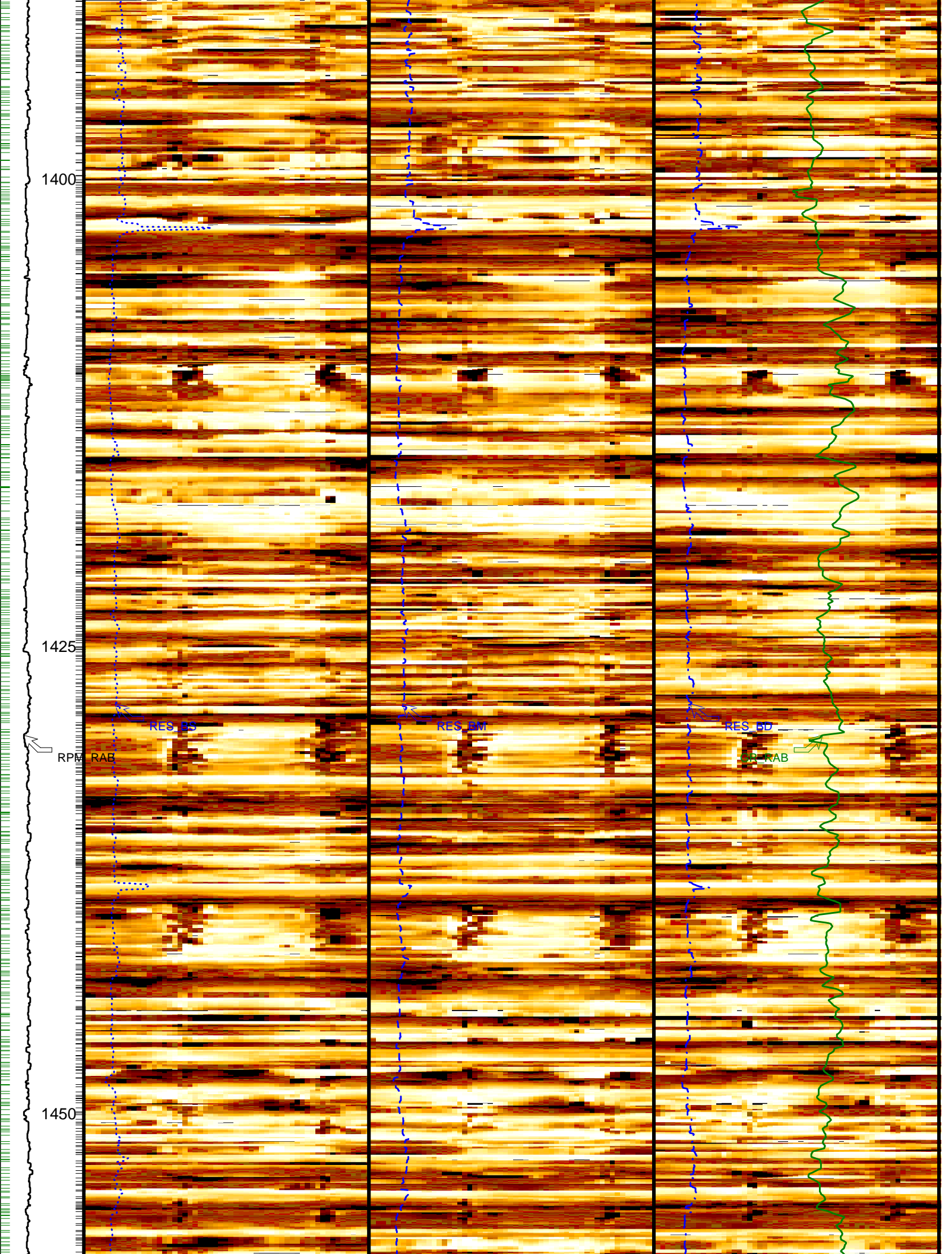
Shallow Button Resistivity (RES_BS)
(OHMM)

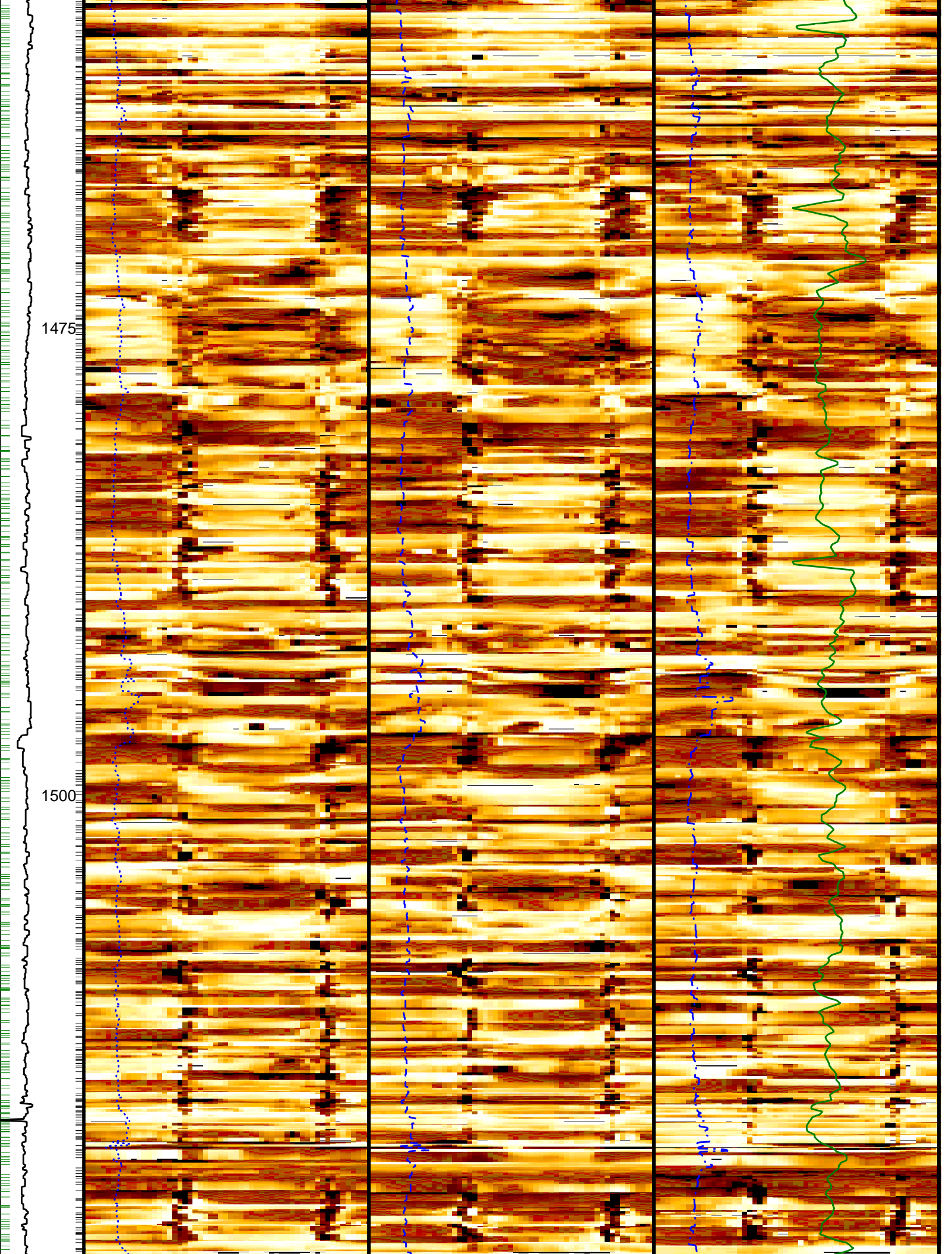
Medium Button Resistivity (RES_BM)
(OHMM)

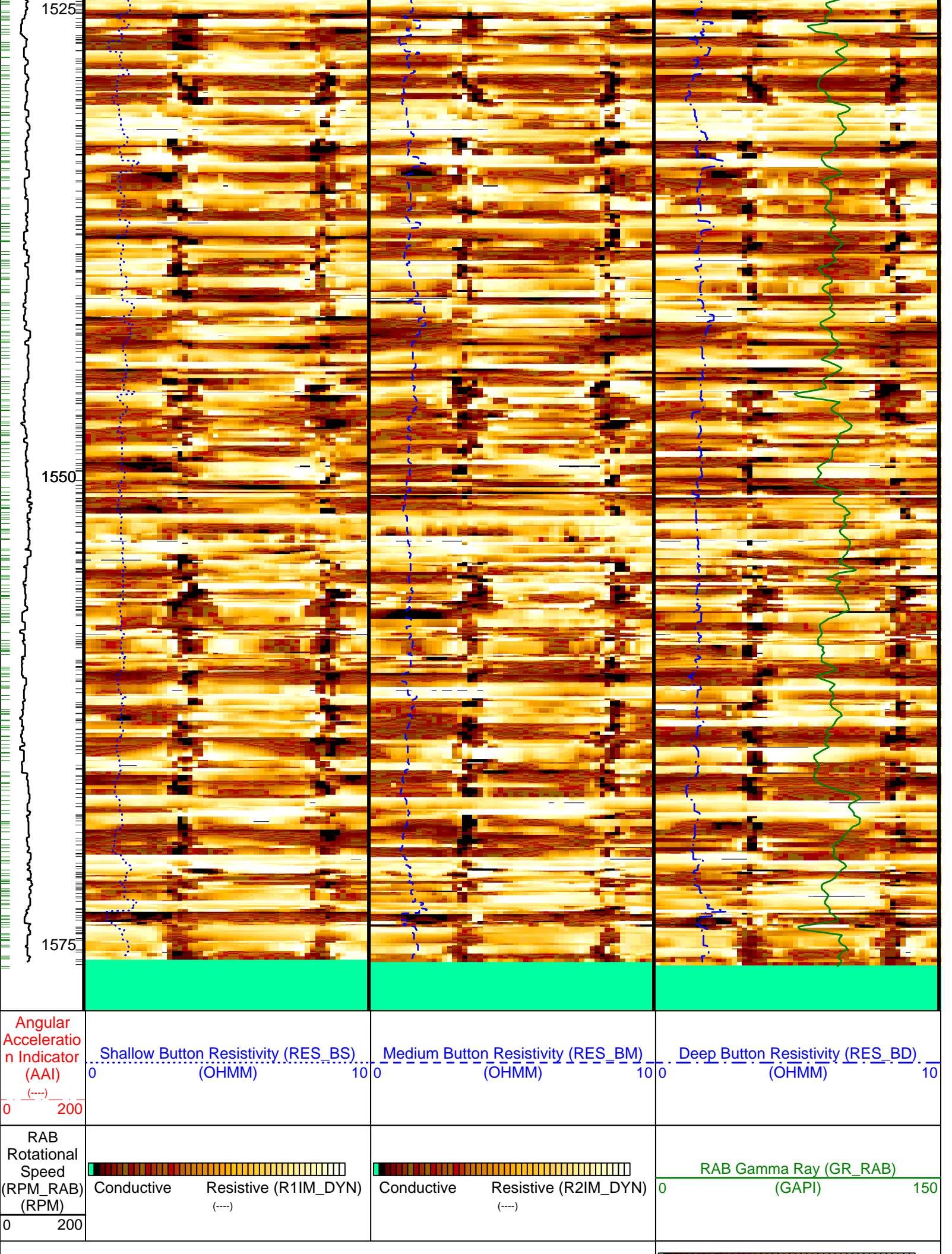
Deep Button Resistivity (RES_BD)
(OHMM)











1525

1550

1575

Angular Acceleration Indicator (AAI) (---) 0 200

Shallow Button Resistivity (RES_BS) (OHMM) 0 10

Medium Button Resistivity (RES_BM) (OHMM) 0 10

Deep Button Resistivity (RES_BD) (OHMM) 0 10

RAB Rotational Speed (RPM_RAB) (RPM) 0 200

Conductive Resistive (R1IM_DYN) (---)

Conductive Resistive (R2IM_DYN) (---)

RAB Gamma Ray (GR_RAB) (GAPI) 0 150

PIP SUMMARY

— Ring Samples
+ Gamma Ray Samples

IDEAL Version: ID10_2B_08
IDF

Company: Lamont-Doherty Borehole Research

Schlumberger

Well: IODP Expedition 311 CAS-06A
Field: Cascadia Margin
Rig: JOIDES Resolution
State: Pacific Ocean

GeoVISION Resistivity - Image
1:240 Measured Depth
Recorded Mode Log