

Company: Lamont Doherty

Well: IODP EXP 311 Site U1328C

Field: CAS-06A

Country: Canada

Ocean: Pacific

Country: Canada
Field: CAS-06A
Location: Rig- Joides Resolution
Well: IODP EXP 311 Site U1328C
Company: Lamont Doherty

Formation Micro-Scanner		
Rig- Joides Resolution	Elev.: K.B. 11.3 m	
	G.L. -1279 m	
	D.F. 11 m	
Permanent Datum:	GROUND LEVEL	Elev.: 0 m
Log Measured From: DES		11.3 m above Perm. Datum
Drilling Measured From: DES		
API Serial No.	Max. Hole Devi.	Longitude Latitude
		126 51.043 W 48 40.0546 N

Logging Date		Run 1	Run 2	Run
Run Number	1			
Depth Driller	1579 m			
Schlumberger Depth	1572.5 m			
Bottom Log Interval	1572 m			
Top Log Interval	1295.5 m			
Casing Driller Size @ Depth	0.000 in @ 1339.35 m			
Casing Schlumberger	1337 m			
Bit Size	9.875 in			
Type Fluid In Hole	Seppolite with Barite			
Density	1.26 g/cm3			
Fluid Loss	0 cm3			
Source Of Sample				
RM @ Measured Temperature	0.177 ohm.m @ 23 degC			
RMF @ Measured Temperature	0.000 ohm.m @			
RMC @ Measured Temperature	0.000 ohm.m @			
Source RMF	RMC			
RM @ MRT	0.199 @ 18 @ 18			
Maximum Recorded Temperatures	18 degC			
Circulation Stopped	10/14/05 1100			
Logger On Bottom	10/14/05 See Log			
Unit Number	99 Houston			
Recorded By	Steve Kittredge			
Witnessed By	Gilles Guerin, Alberto Malinverno			

DISCLAIMER

THE USE OF AND RELIANCE UPON THIS RECORDED-DATA BY THE HEREIN NAMED COMPANY (AND ANY OF ITS AFFILIATES, PARTNERS, REPRESENTATIVES, AGENTS, CONSULTANTS AND EMPLOYEES) IS SUBJECT TO THE TERMS AND CONDITIONS AGREED UPON BETWEEN SCHLUMBERGER AND THE COMPANY, INCLUDING: (a) RESTRICTIONS ON USE OF THE RECORDED-DATA; (b) DISCLAIMERS AND WAIVERS OF WARRANTIES AND REPRESENTATIONS REGARDING COMPANY'S USE OF AND RELIANCE UPON THE RECORDED-DATA; AND (c) CUSTOMER'S FULL AND SOLE RESPONSIBILITY FOR ANY INFERENCE DRAWN OR DECISION MADE IN CONNECTION WITH THE USE OF THIS RECORDED-DATA.

OTHER SERVICES1

OS1: WSTA
 OS2: DITE/HLDS
 OS3: APS/HNGS
 OS4:
 OS5:

OTHER SERVICES2

OS1:
 OS2:
 OS3:
 OS4:
 OS5:

REMARKS: RUN NUMBER 1

Hole drilled with APC/XCB.
 All depths in Meters Below Rig Floor (MBRF).
 Hole flushed with Sepiolite/Barite mud.
 Sea Floor Driller- 1279 MBRF
 Sea Floor Logger- 1279 MBRF
 Total Depth Driller- 1579 MBRF
 Total Depth Logger- 1572.5 MBRF
 Casing Bottom Driller- 1339.35 MBRF
 Casing Bottom Logger- 1337 MBRF
 Tool power was off from approxiamtely 1375-1370 MBRF.

REMARKS: RUN NUMBER 2

Heave was 2-3 meters.

RUN 1

SERVICE ORDER #:
 PROGRAM VERSION: 12C0-301
 FLUID LEVEL:

RUN 2

SERVICE ORDER #:
 PROGRAM VERSION:
 FLUID LEVEL:

LOGGED INTERVAL

START

STOP

LOGGED INTERVAL

START

STOP

EQUIPMENT DESCRIPTION

RUN 1

RUN 2


SURFACE EQUIPMENT

GSR-U/Y 166
 WITM (DTS)-A

DOWNHOLE EQUIPMENT

LEH-QT  32.33

LEH-QT  31.16

DTC-H  31.44

ECH-KC  30.53

SGT-N  30.25 30.53

SGH-K 2450

CTEM
 TelStatus
 ToolStatu
 Gamma Ray

SGC-TB 9585
SGD-TAA

AH-MCD
AH-MCD

28.85

DSST-B

SPAC-B 8128
ECH-SD 8128
SMDR-BD 8076
SSIJ-BA 8127
SMDX-AA 8148

26.73

PWF

11.18

AH-MCD
AH-MCD

11.18

DTA-A

ECH-KE
DTA-A 8231

8.90

MEST-B

MEAH-B 701
MEAC-A 804
MEPH-A 702
GPIC-A 840
MEPC-AB 807
MEDS-B 771

7.68

MEDR MEAC
MEPC MEDS-B
HV DF
Tension GPIT

0.46

0.00

TOOL ZERO

MAXIMUM STRING DIAMETER 4.50 IN
MEASUREMENTS RELATIVE TO TOOL ZERO
ALL LENGTHS IN METERS

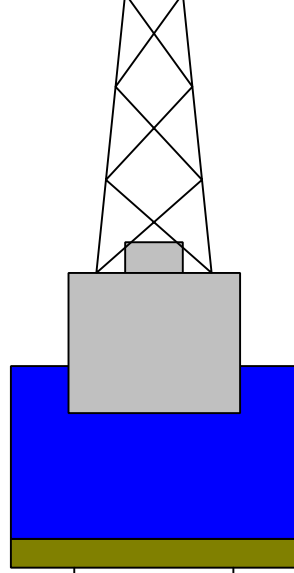
Production String	(in)	(m)	Well Schematic	(m)	(in)	Casing String
	OD	ID		MD	MD	

Kelly Bushing Elevation
Derrick Floor Elevation

Mean Sea Level

11.0
11.3

0.0



0.0 5.500

Casing String

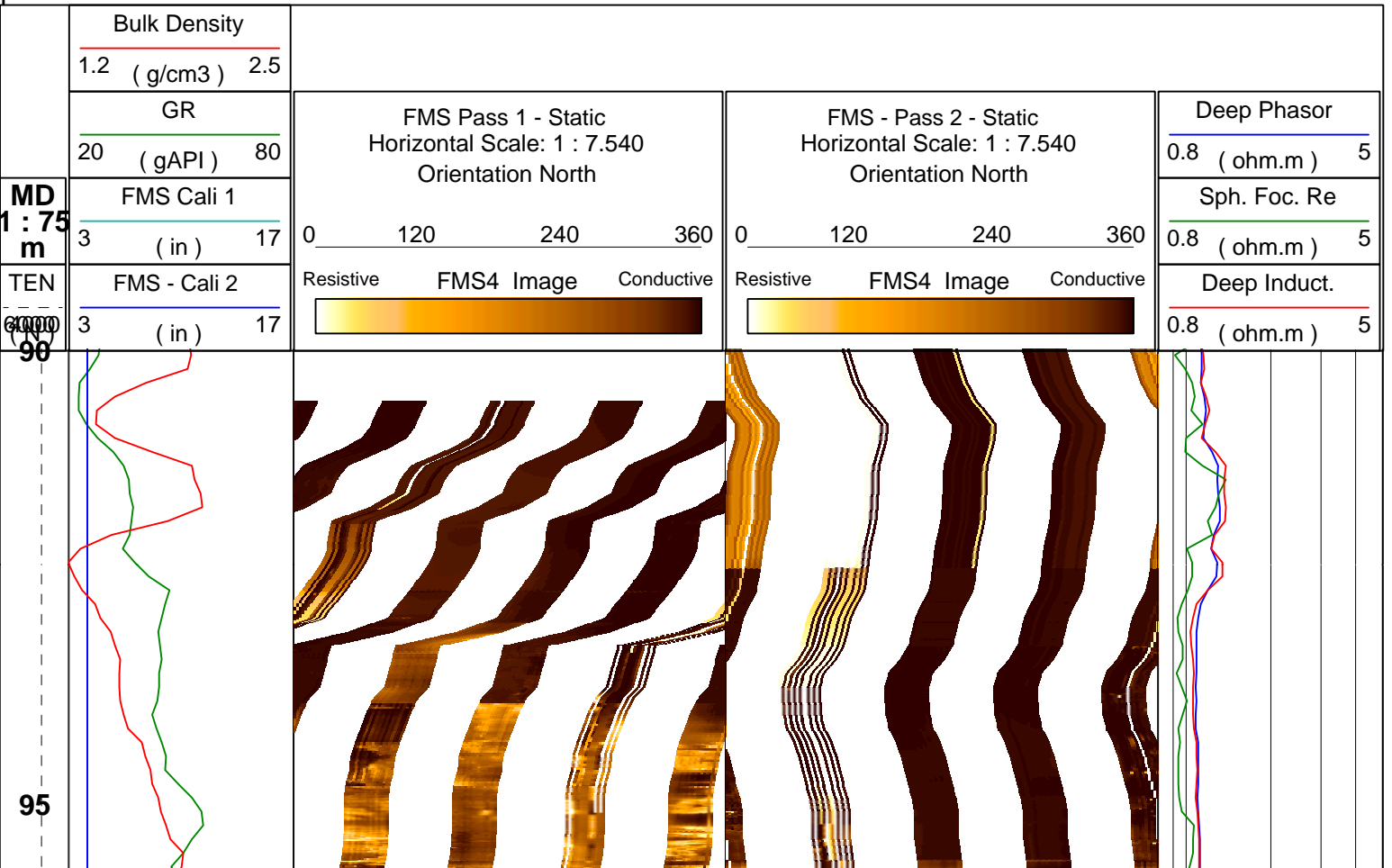
1279.0 9.875
1339.3 5.500

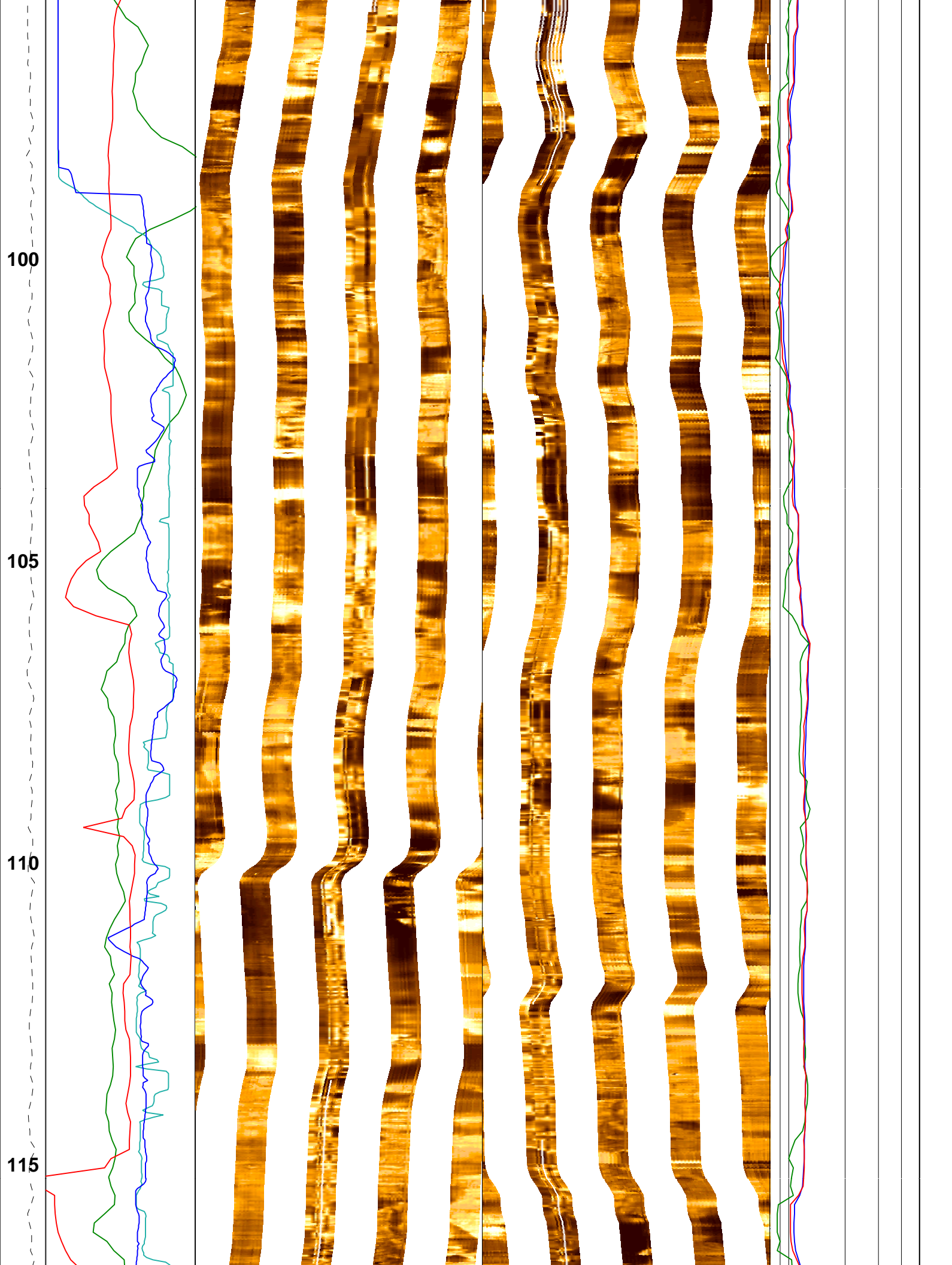
Borehole Segment
Casing Shoe

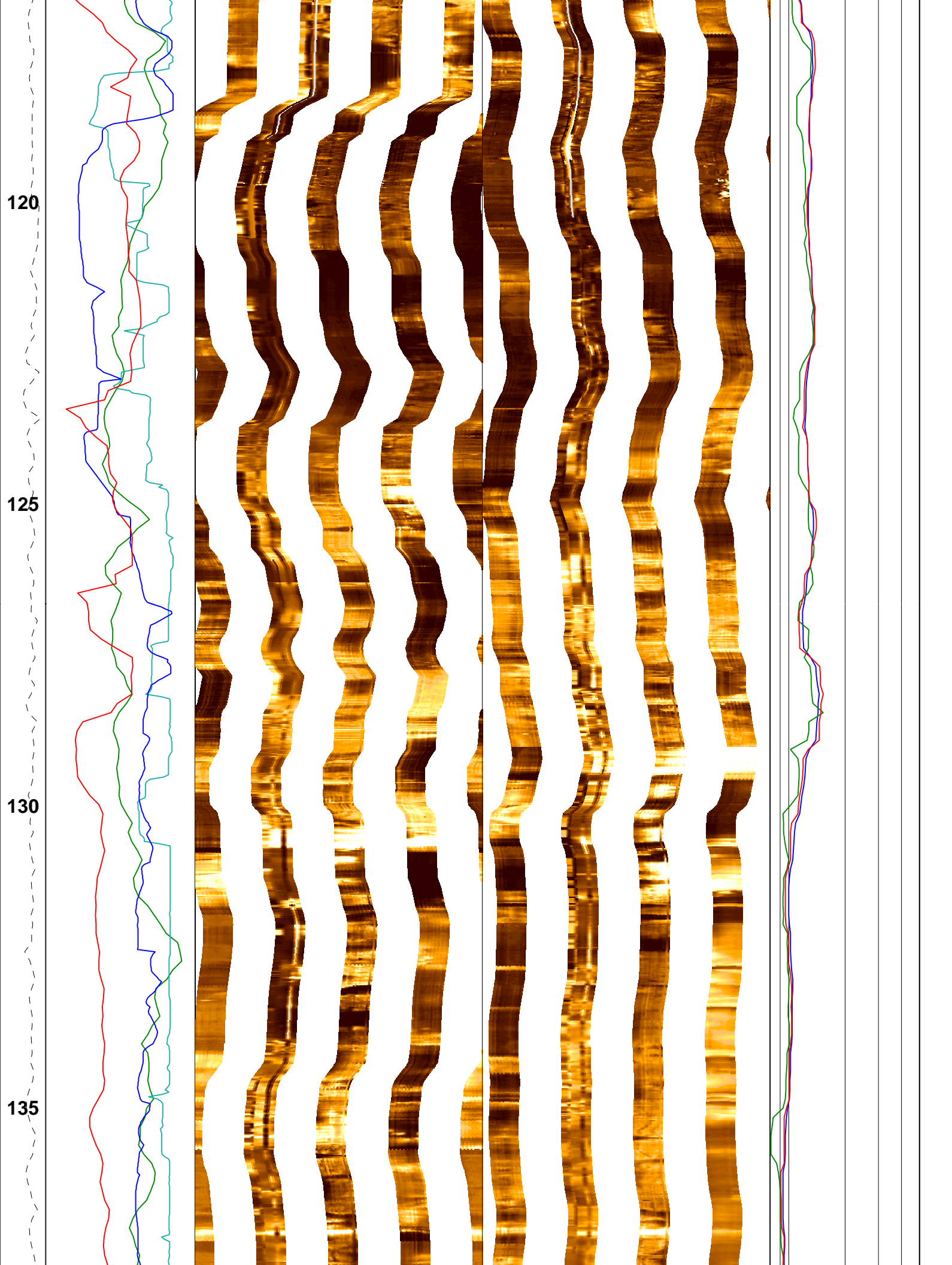
1579.0 9.875

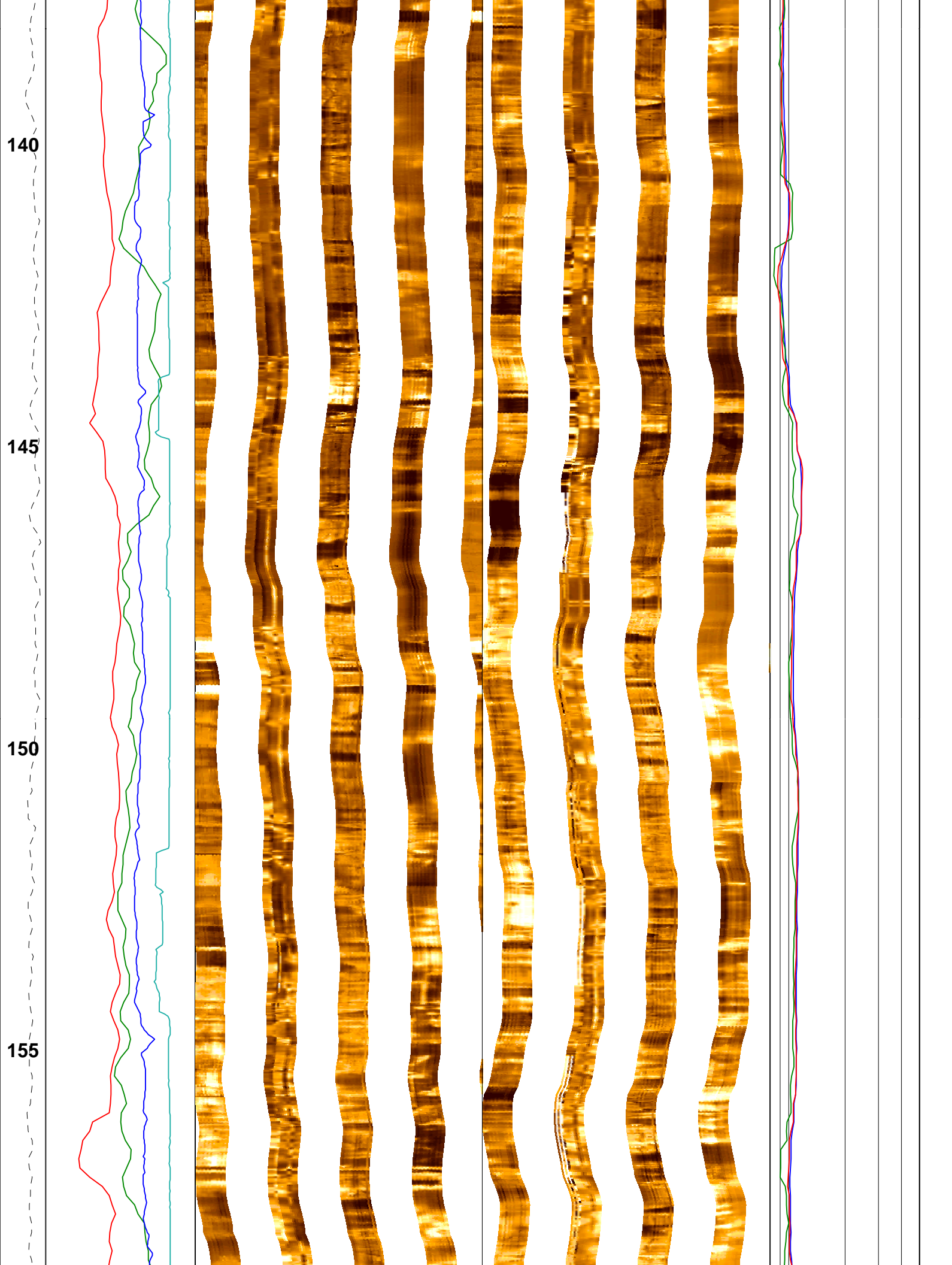
Borehole Segment Bottom

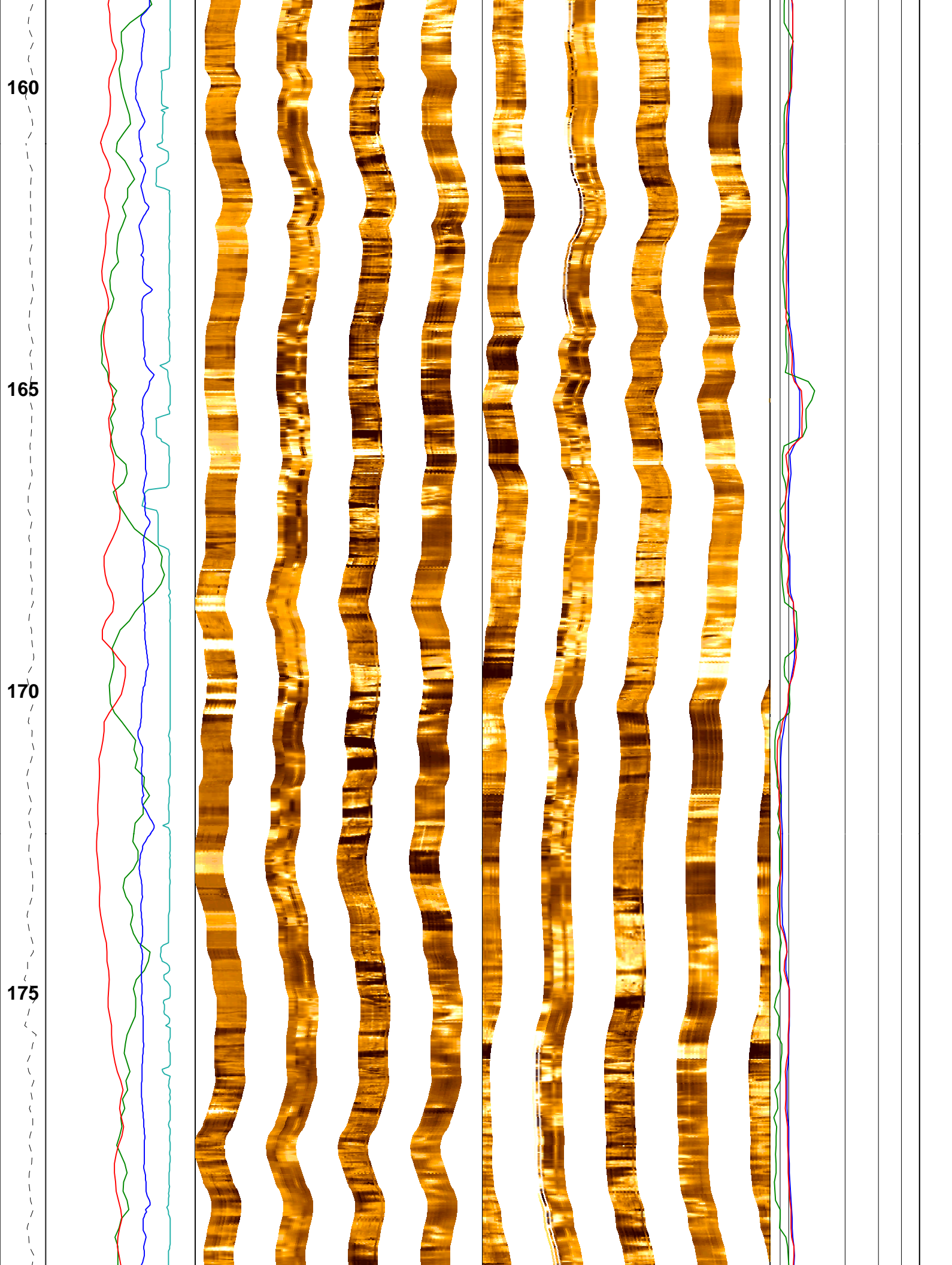


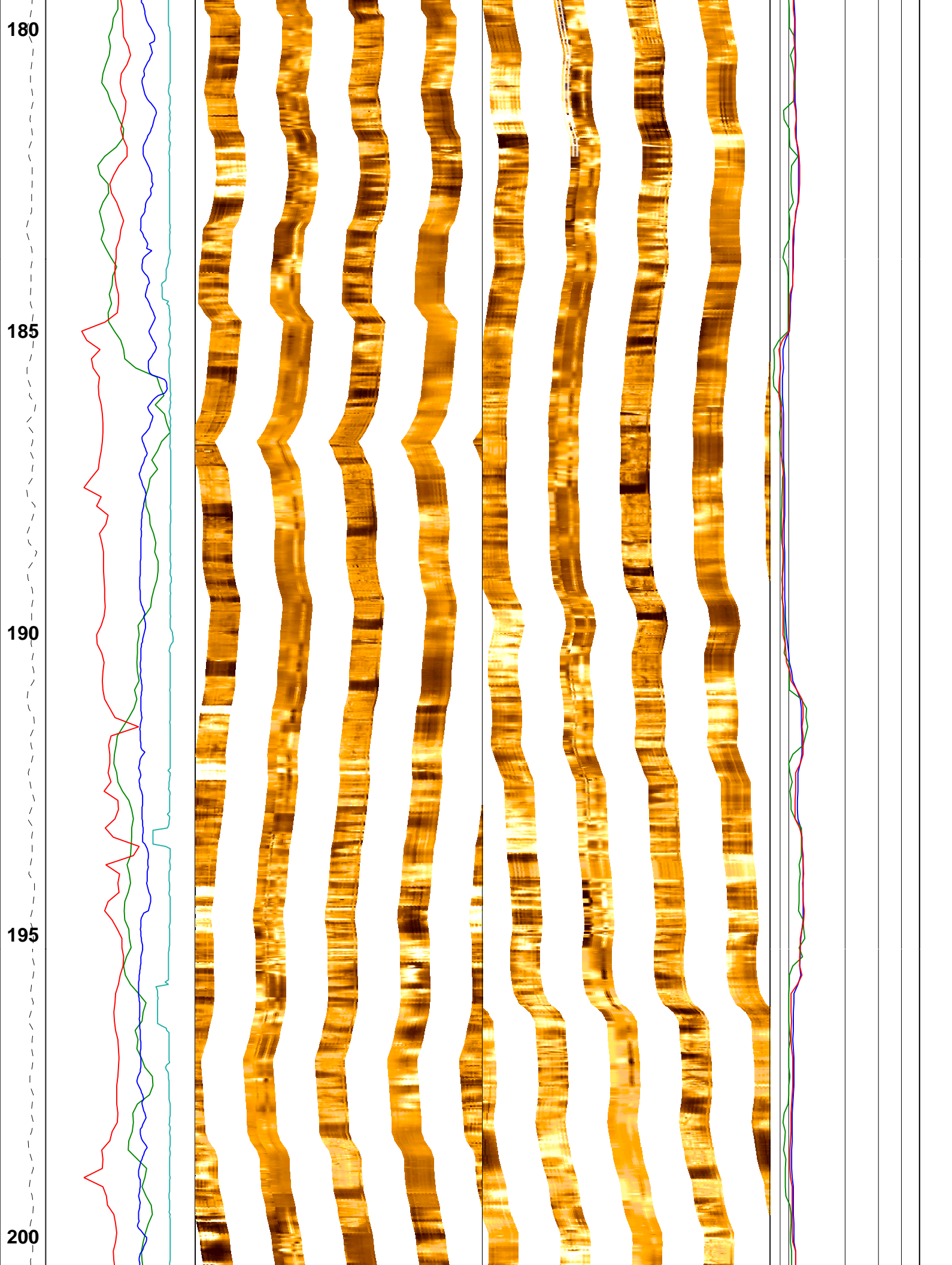


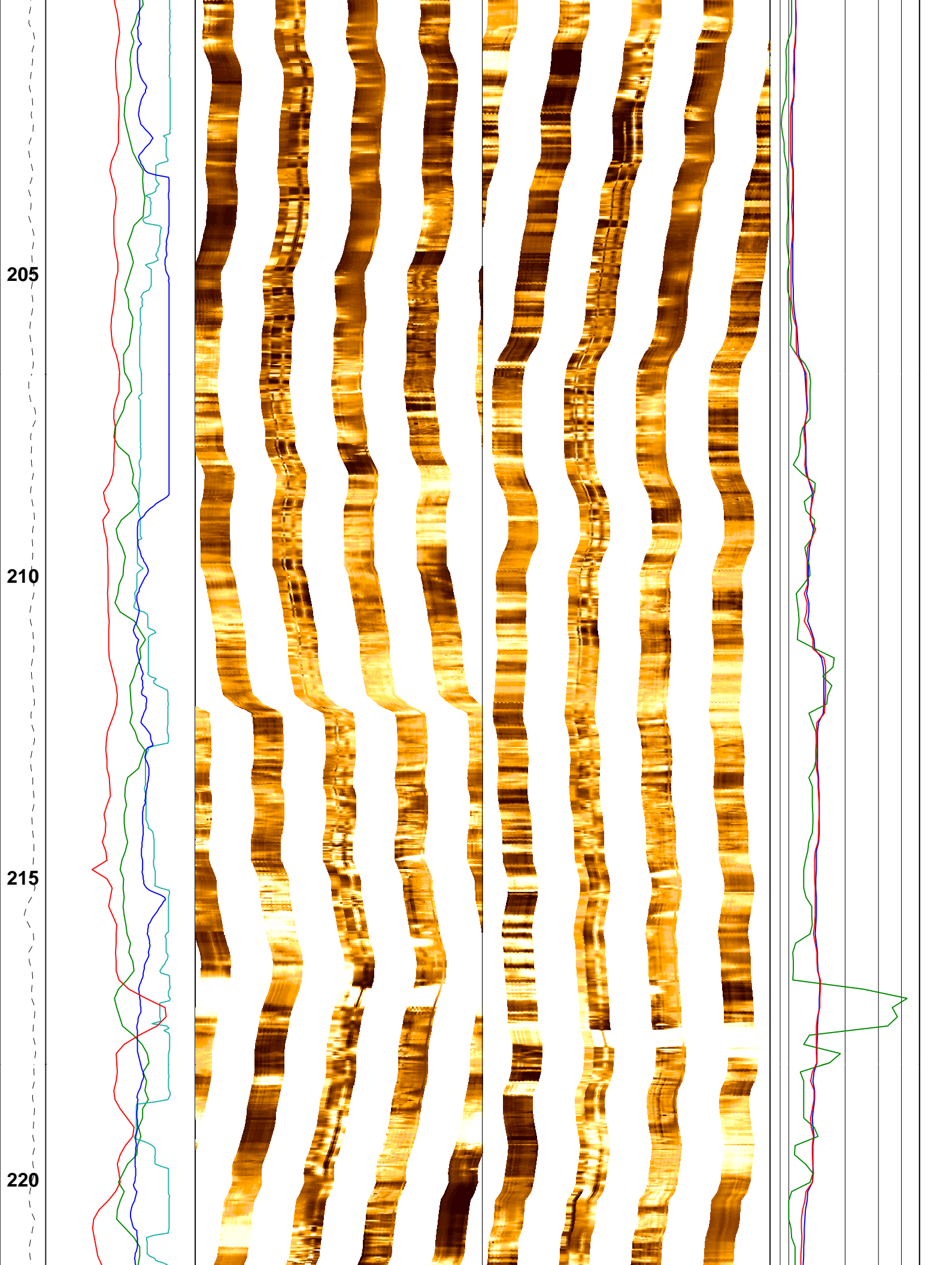


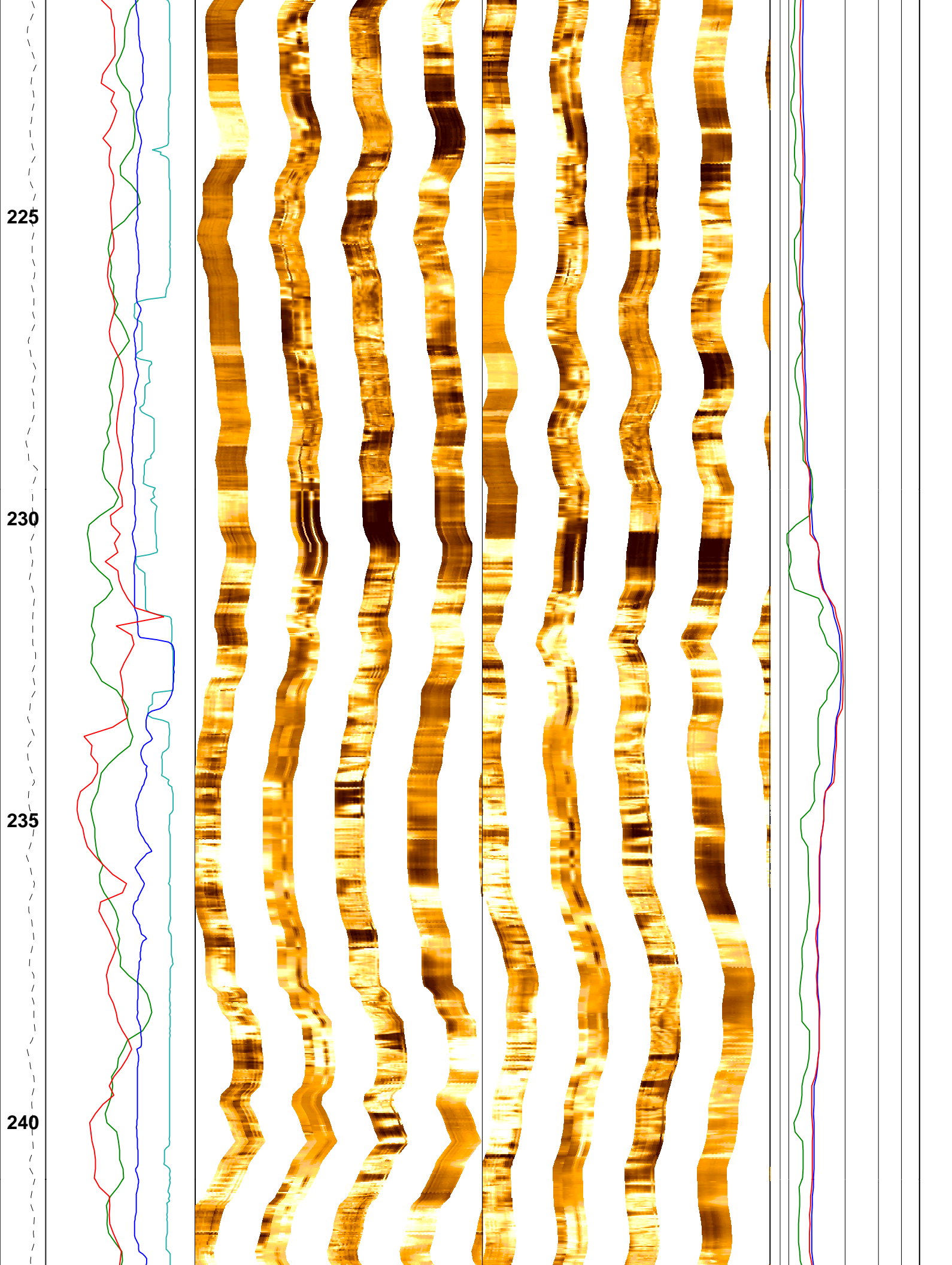


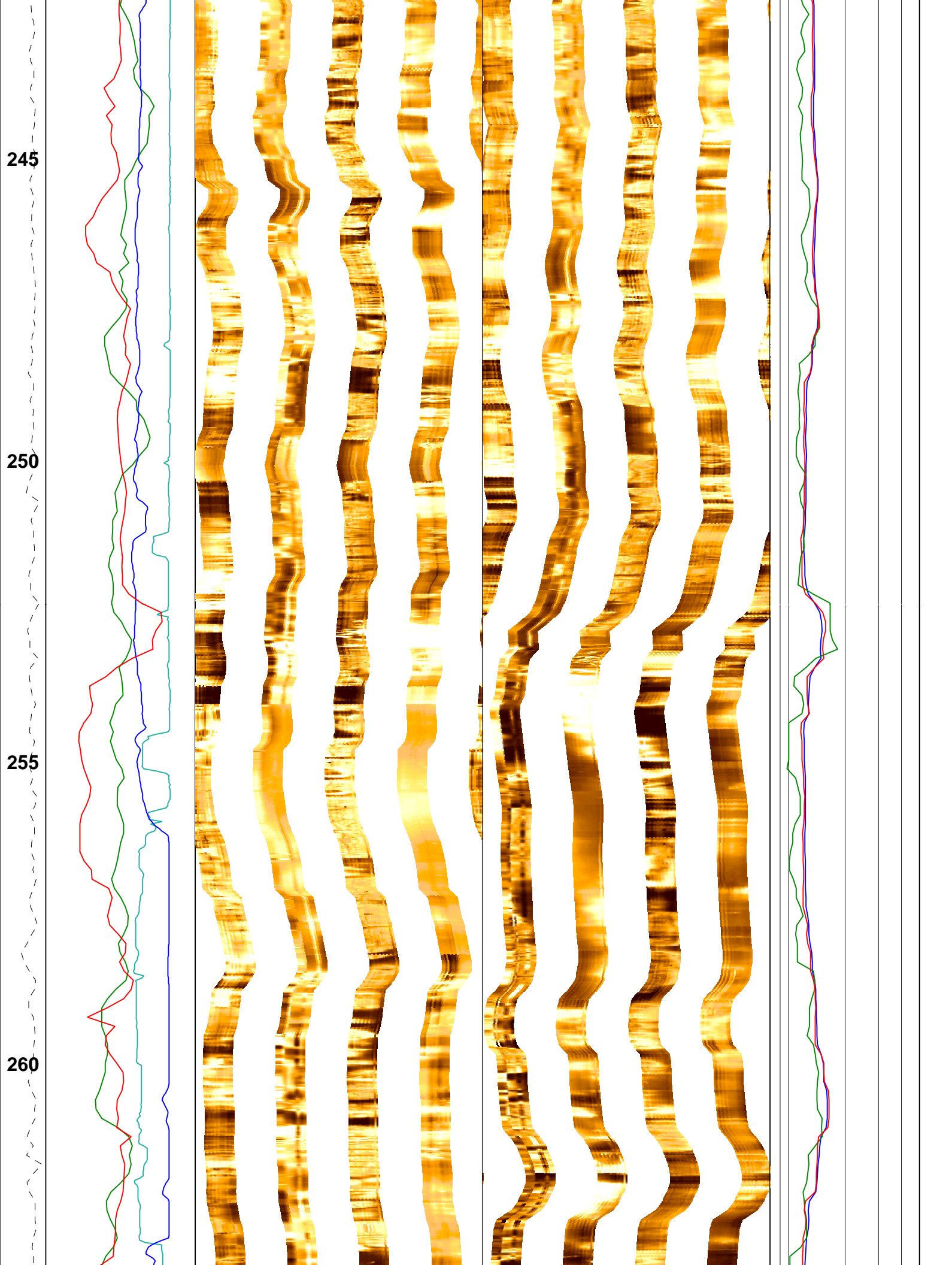


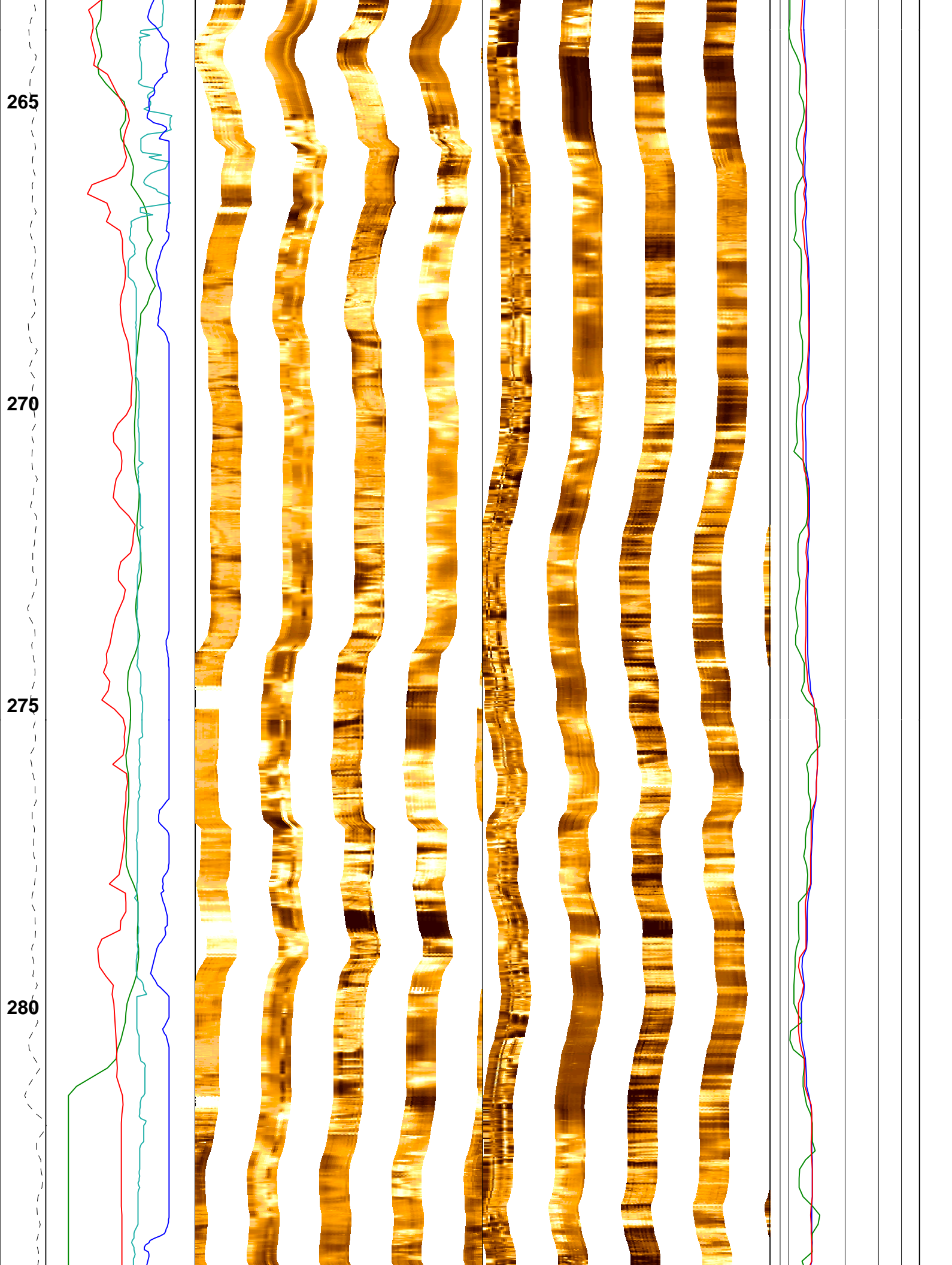










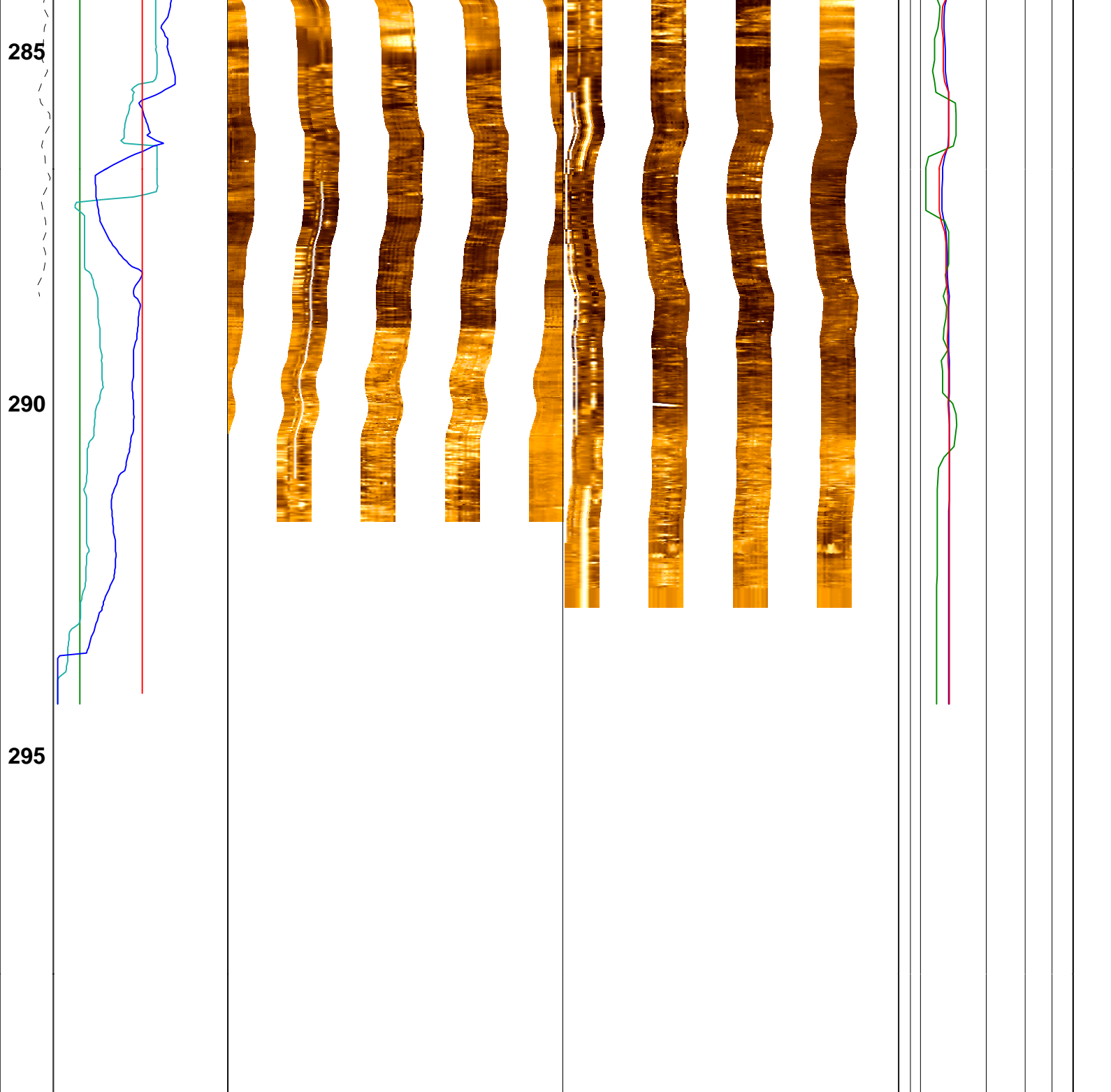


265

270

275

280



TEN (N) MD 1 : 75 m	FMS - Cali 2 3 (in) 17	FMS Pass 1 - Static Horizontal Scale: 1 : 7.540 Orientation North 0 120 240 360 Resistive FMS4 Image Conductive	FMS - Pass 2 - Static Horizontal Scale: 1 : 7.540 Orientation North 0 120 240 360 Resistive FMS4 Image Conductive	Deep Induct. 0.8 (ohm.m) 5
	FMS Cali 1 3 (in) 17			Sph. Foc. Re 0.8 (ohm.m) 5
	GR 20 (gAPI) 80		Deep Phasor 0.8 (ohm.m) 5	
	Bulk Density 1.2 (g/cm3) 2.5			

Field: CAS-06A

Country: Canada

Ocean: Pacific

Formation Micro-Scanner