

DISCLAIMER

THE USE OF AND RELIANCE UPON THIS RECORDED-DATA BY THE HEREIN NAMED COMPANY (AND ANY OF ITS AFFILIATES, PARTNERS, REPRESENTATIVES, AGENTS, CONSULTANTS AND EMPLOYEES) IS SUBJECT TO THE TERMS AND CONDITIONS AGREED UPON BETWEEN SCHLUMBERGER AND THE COMPANY, INCLUDING: (a) RESTRICTIONS ON USE OF THE RECORDED-DATA; (b) DISCLAIMERS AND WAIVERS OF WARRANTIES AND REPRESENTATIONS REGARDING COMPANY'S USE OF AND RELIANCE UPON THE RECORDED-DATA; AND (c) CUSTOMER'S FULL AND SOLE RESPONSIBILITY FOR ANY INFERENCE DRAWN OR DECISION MADE IN CONNECTION WITH THE USE OF THIS RECORDED-DATA.

OTHER SERVICES1
 OS1: MESTB/DSI/HNGS
 OS2:
 OS3:
 OS4:
 OS5:

OTHER SERVICES2
 OS1:
 OS2:
 OS3:
 OS4:
 OS5:

REMARKS: RUN NUMBER 1
 Hole drilled for logging, with two XCB cores on bottom.
 All depths in Meters Below Rig Floor (MBRF).
 Hole flushed with Sepiolite/Barite mud.
 Sae Floor Driller- 957.4 MBRF
 Sea Floor Logger- 956 MBRF.
 Total Depth Driller- 1167.9 MBRF
 Total Depth Logger- 1166 MBRF.
 Casing bottom Driller- 1004.32 MBRF.
 Casing Bottom Logger- 1003 MBRF
 Tight hole at 1144 and 1128 MBRF.
 Caliper closed before entering pipe.
 Heave was around 3+ meters.
 Lamont Heave Comp. hit limit around 1115 MBRF.

REMARKS: RUN NUMBER 2

RUN 1

SERVICE ORDER #: _____
 PROGRAM VERSION: 12C0-301
 FLUID LEVEL: _____

LOGGED INTERVAL	START	STOP

RUN 2

SERVICE ORDER #: _____
 PROGRAM VERSION: _____
 FLUID LEVEL: _____

LOGGED INTERVAL	START	STOP

EQUIPMENT DESCRIPTION



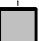
RUN 1

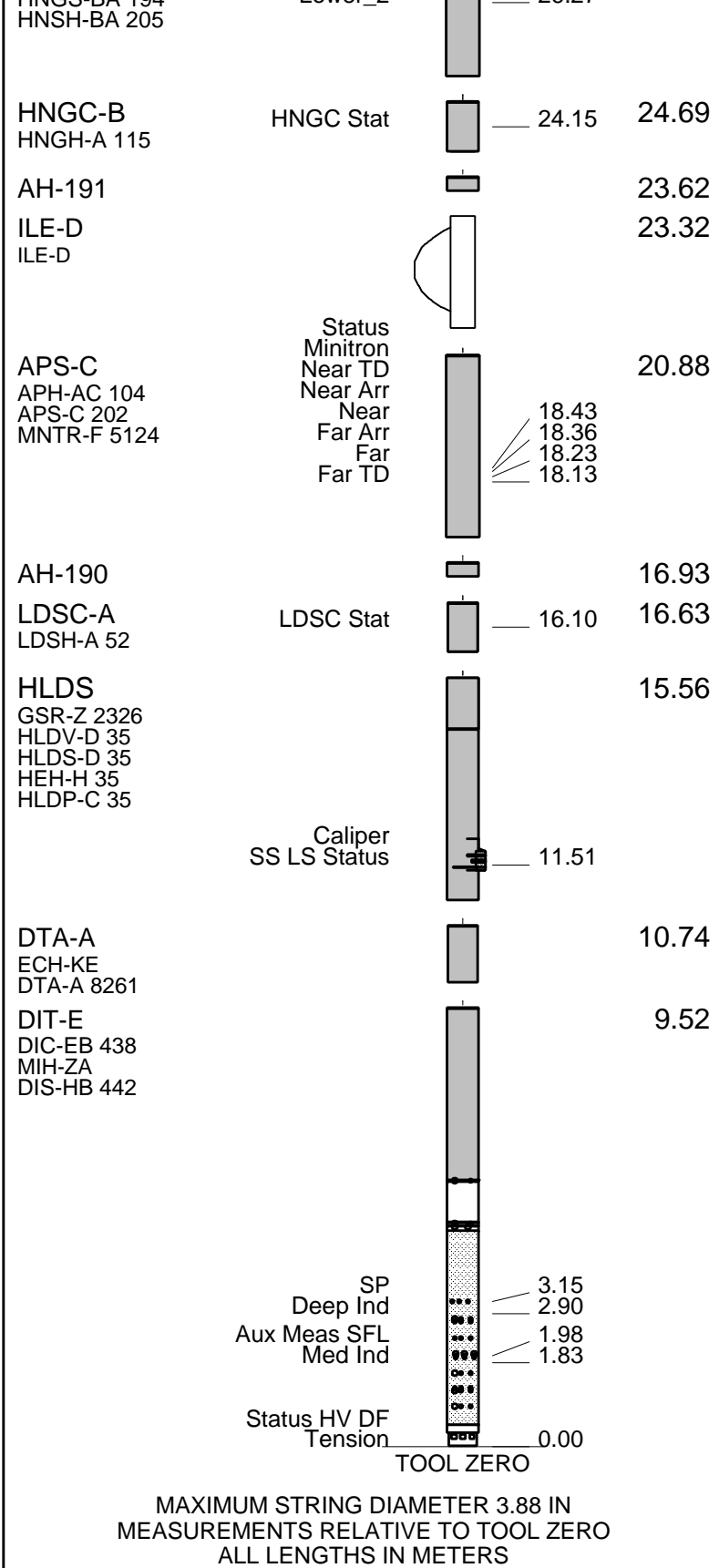
SURFACE EQUIPMENT

SFT-281 6250
 SFT-178 6250
 GSR-U 135
 WITM (DTS)-A

RUN 2

DOWNHOLE EQUIPMENT

LEH-QT			28.99
LEH-QT 1726			
DTC-H	CTEM		27.82
ECH-KC 9841	TelStatus		28.10
	ToolStatu		27.19
HNGS-BA	Upper_1		26.49
HNGS-BA 194	Lower_2		26.27
			27.19



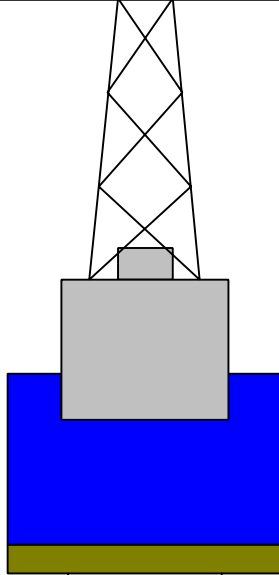
Production String	(in)	(ft)	Well Schematic	(ft)	(in)	Casing String
	OD	ID		MD	MD	

Kelly Bushing Elevation
Derrick Floor Elevation

11.3
11.0

Mean Sea Level

0.0



0.0 5.500

Casing String

957.4 9.875
1004.3 5.500

Borehole Segment
Casing Shoe

1167.9 9.875

Borehole Segment Bottom



Schlumberger

Main Up Log

MAXIS Field Log

Input DLIS Files

DEFAULT	PI_LDL_APS_NGS_044LUP	FN:45	PRODUCER	30-Sep-2005 15:41	1165.9 M	951.0 M
---------	-----------------------	-------	----------	-------------------	----------	---------

Output DLIS Files

DEFAULT	PI_LDL_APS_NGS_045PUP	FN:47	PRODUCER	30-Sep-2005 16:34	1165.9 M	955.7 M
DLIS_BKUP	PI_LDL_APS_NGS_045PUP	FN:48	PRODUCER	30-Sep-2005 16:34	1165.9 M	955.7 M

OP System Version: 12C0-301
MCM

DIT-E	12C0-301	DTA-A	12C0-301
HLDS	SPC-2602-NUCL_b	LDSC-A	SPC-2602-NUCL_b
APS-C	SPC-2602-NUCL_b	HNGC-B	SPC-2602-NUCL_b
HNGS-BA	SPC-2602-NUCL_b	DTC-H	12C0-301

Changed Parameter Summary

DLIS Name

New Value

Previous Value

Depth & Time

GCSE

BS

LCAL

1006.8 16:37:35

PIP SUMMARY

Time Mark Every 60 S

HNGS Spectroscopy Gamma Ray (HSGR)
 (GAPI) 0 150

Area1
From HCGR to HSGR

HNGS Borehole Potassium (HBHK)
 -0.05 (---) 0.05

HNGS Computed Gamma Ray (HCGR)
 (GAPI) 0 150

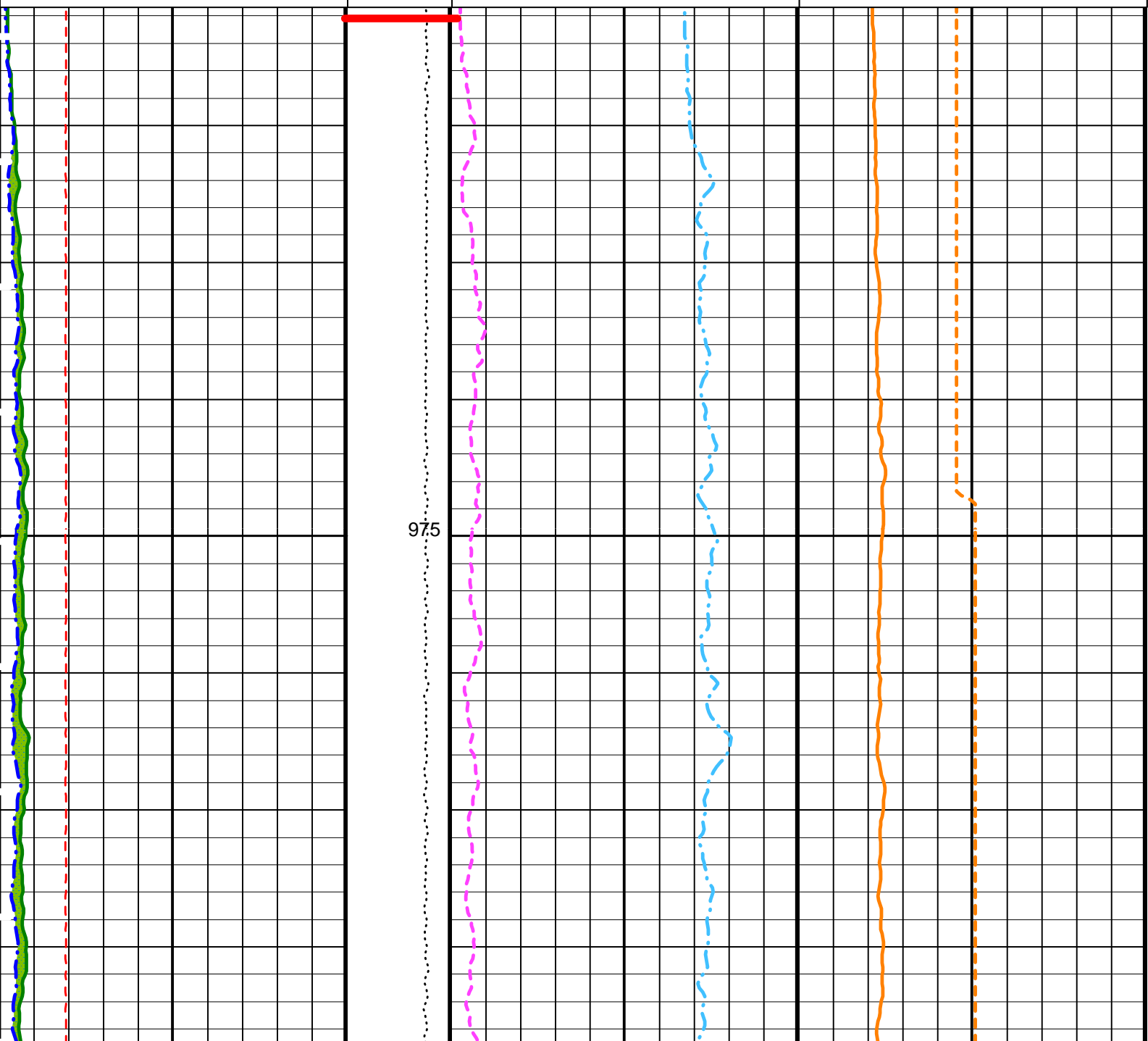
HNGS Uranium (HURA)
 (PPM) -5 10

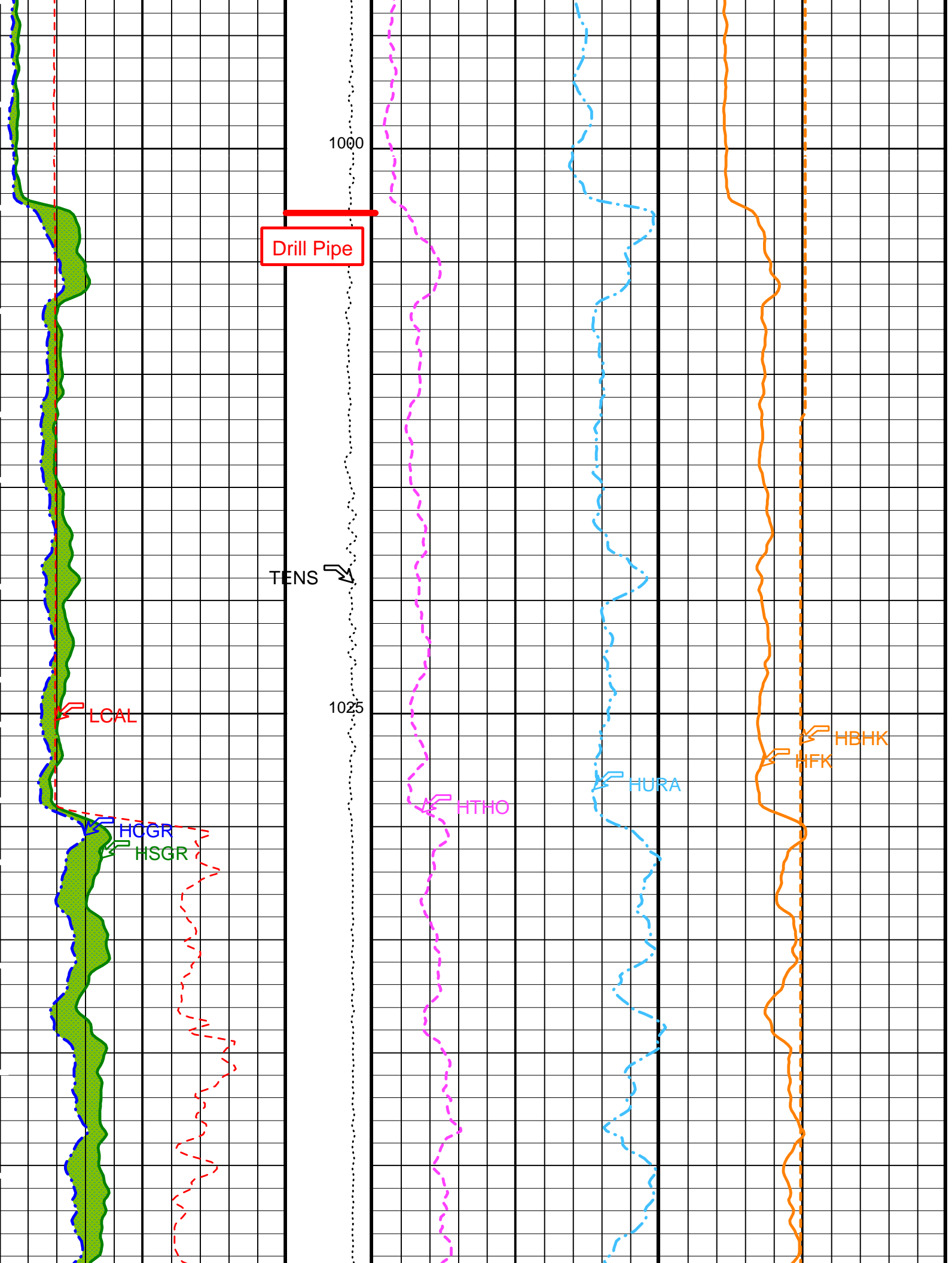
HLDS Caliper (LCAL)
 (IN) 0 20

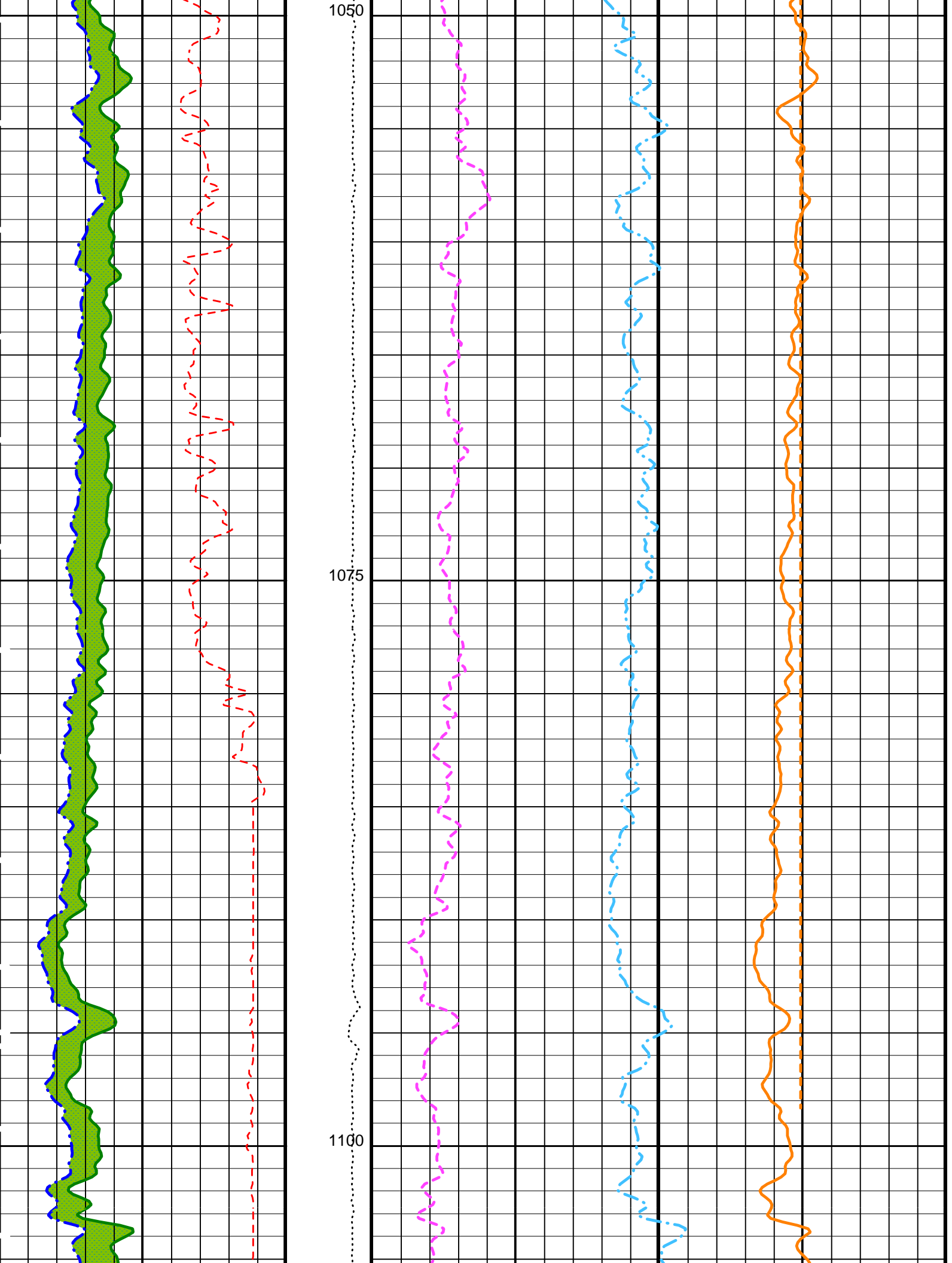
Tension (TENS)
 (LBF) 10000 0

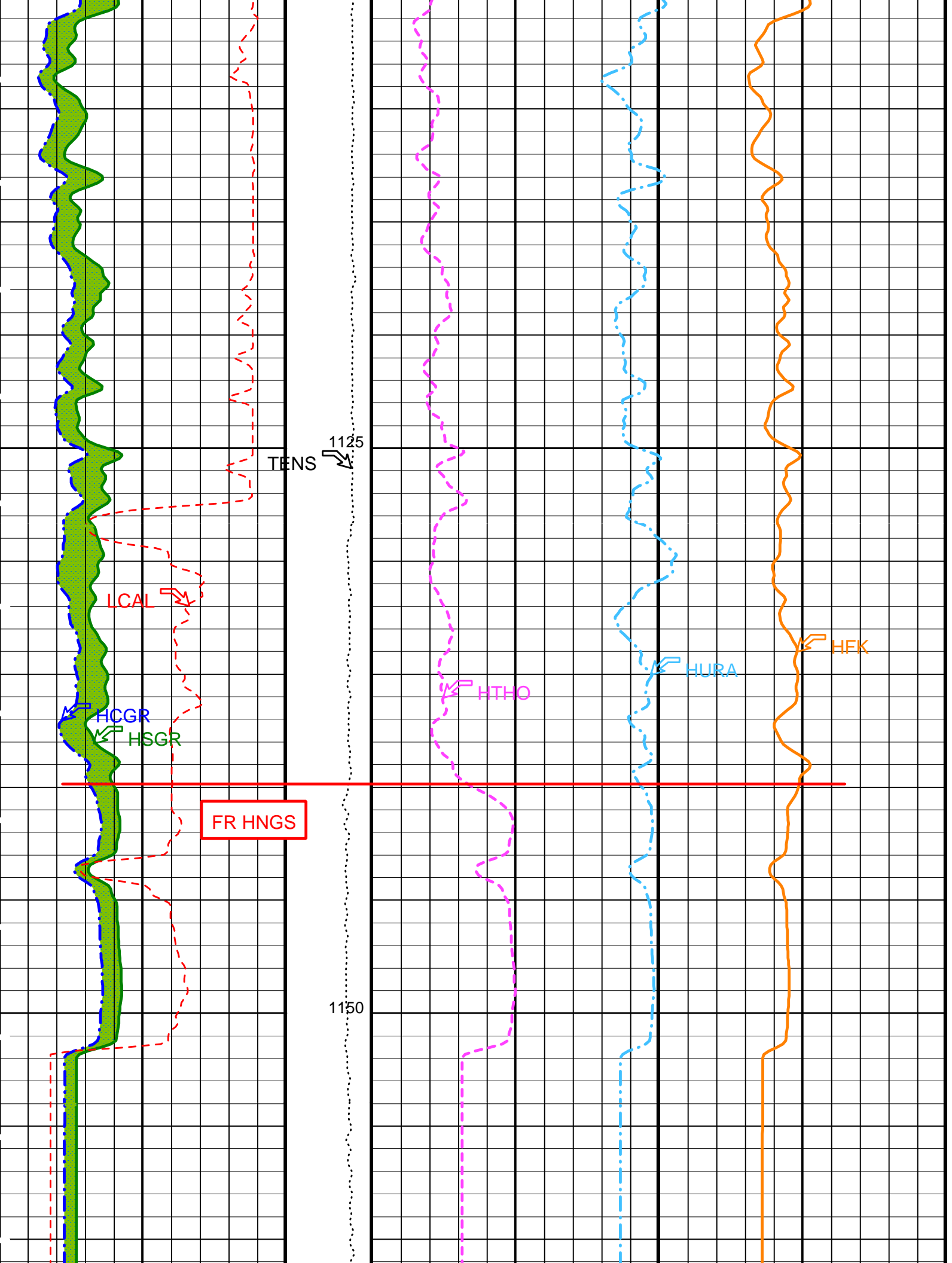
HNGS Thorium (HTHO)
 (PPM) 0 20

HNGS Potassium (HFK)
 -0.01 (---) 0.04

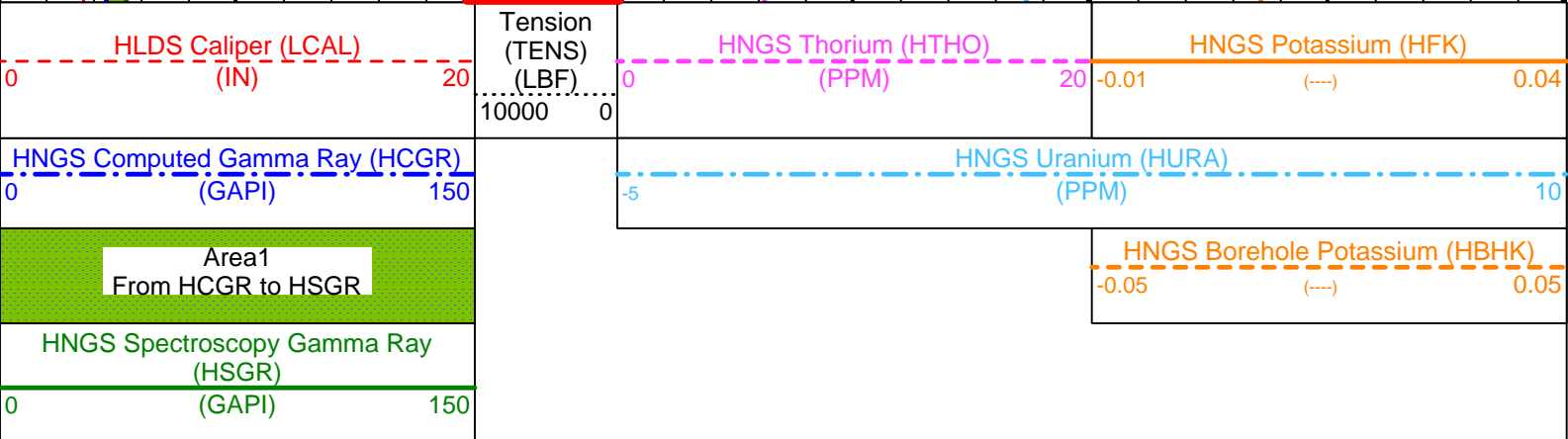








Total Depth



PIP SUMMARY

Time Mark Every 60 S

Parameters

DLIS Name	Description	Value
DIT-E: Dual Induction - E		
BHS	Borehole Status	OPEN
GCSE	Generalized Caliper Selection	LCAL
APS-C: Accelerator-Porosity Tool		
BHS	Borehole Status	OPEN
GCSE	Generalized Caliper Selection	LCAL
HNGS-BA: Hostile Natural Gamma Ray Sonde		
BAR1	HNGS Detector 1 Barite Constant	1
BAR2	HNGS Detector 2 Barite Constant	1
BHK	HNGS Borehole Potassium Correction Concentration	0
BHS	Borehole Status	OPEN
CSD1	Inner Casing Outer Diameter	0 IN
CSD2	Outer Casing Outer Diameter	0 IN
CSW1	Inner Casing Weight	0 LB/F
CSW2	Outer Casing Weight	0 LB/F
DBCC	HNGS Barite Constant Correction Flag	NONE
GCSE	Generalized Caliper Selection	LCAL
H1P	HNGS Detector 1 Allow/Disallow In Processing	ALLOW
H2P	HNGS Detector 2 Allow/Disallow In Processing	ALLOW
HABK	HNGS Borehole Potassium Running Average	-0.00188243
HALF	HNGS Alpha Filter Length	60 IN
HCRB	HNGS Apply Borehole Potassium Correction	NONE
HMWM	Mud Weighting Material	BARI
HNPE	HNGS Processing Enable	YES
S1BI	HNGS Detector 1 Calibration Bismuth Count Rate	1.3 CPS
S2BI	HNGS Detector 2 Calibration Bismuth Count Rate	1.3 CPS
SGRC	HNGS Standard Gamma-Ray Correction Flag	YES
TPOS	Tool Position	ECCE
VBA1	HNGS Detector 1 Variable Barite Factor Running Average	0.971055
VBA2	HNGS Detector 2 Variable Barite Factor Running Average	0.974887
HOLEV: Integrated Hole/Cement Volume		
BHS	Borehole Status	OPEN
GCSE	Generalized Caliper Selection	LCAL
System and Miscellaneous		
BS	Bit Size	9.875 IN
DFD	Drilling Fluid Density	1.26 G/C3
DO	Depth Offset for Playback	0.0 M
PP	Playback Processing	RECOMPUTE

Format: HNGSYields Vertical Scale: 1:200 Graphics File Created: 30-Sep-2005 16:34

OP System Version: 12C0-301
MCM

DIT-E	12C0-301	DTA-A	12C0-301
HLDS	SPC-2602-NUCL_b	LDSC-A	SPC-2602-NUCL_b
APS-C	SPC-2602-NUCL_b	HNGC-B	SPC-2602-NUCL_b
HNGS-BA	SPC-2602-NUCL_b	DTC-H	12C0-301

Input DLIS Files

DEFAULT	PI_LDL_APS_NGS_044LUP	FN:45	PRODUCER	30-Sep-2005 15:41	1165.9 M	951.0 M
---------	-----------------------	-------	----------	-------------------	----------	---------

Output DLIS Files

DEFAULT	PI_LDL_APS_NGS_045PUP	FN:47	PRODUCER	30-Sep-2005 16:34		
DLIS_BKUP	PI_LDL_APS_NGS_045PUP	FN:48	PRODUCER	30-Sep-2005 16:34		

Company: Lamont Doherty

Schlumberger

Well: IODP EXP 311 Site U1329D

Field: CAS-05D

Country: Canada

Ocean: Pacific

Natural Gamma Ray