

Schlumberger

GEOFRAME
PROCESSED
INTERPRETATION

Processed FMS Images Depth Reference: m WMSF

* A Mark of Schlumberger

Using the following logs: FMS/DIT/HNGS

COMPANY: Lamont Doherty Earth Observatory
WELL: Expedition 318 Hole U1359D
FIELD: Wilkes Land Margin
Rig: JOIDES Resolution
Country:
COUNTRY:
Date Logged: 23-Feb-2010 Date Processed:
Well Location: Latitude: S 64.9043 Deg
Longitude: E 143.9593 Deg
Elevations: KB: 11m DF: 11m GL: 3019.5m
API Number: Job Number:

FOLD HERE The well name, location and borehole reference data were furnished by the customer.

All interpretations are opinions based on inferences from electrical or other measurements and we cannot, and do not guarantee the accuracy or correctness of any interpretation, and we shall not, except in the case of gross or willful negligence on our part, be liable or responsible for any loss, costs, damages or expenses incurred or sustained by anyone resulting from any interpretations made by any of our officers, agents or employees. These interpretations are also subject to Clause 4 of our General Terms and Conditions as set out in our current Price Schedule.

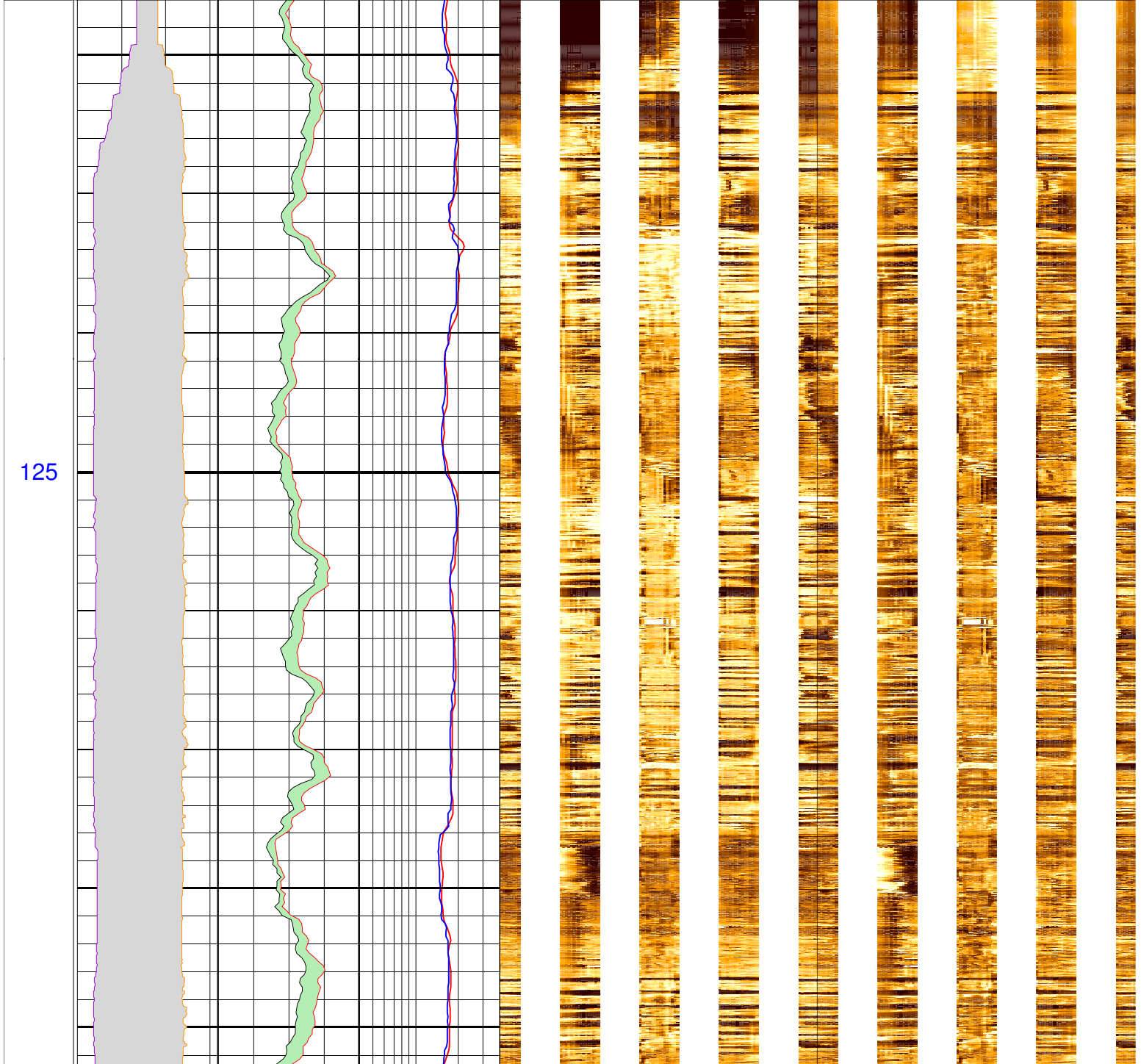
Field Recording:	Location:	Software Version: 17C0-154	Engineer: K. Swain
Office Recording:	ICS Center:	Baseline:	Log Analyst:
Mud and Borehole Measurements:			
Rm @ Measured Temperature:	@	BHT: 12.2degC	Bitsize: 9.875in
Rmf @ Measured Temperature:	@	Type Fluid in Hole:	Sepiolite Sea Water Gel
Rmc @ Measured Temperature:	@	Mud Density: 1.22g/cm3	

Remarks:

Data depth-shifted and depth-matched. Depth reference: m WMSF.
Drill pipe at 100 m WMSF. Water depth: 3019.5 m WRF.

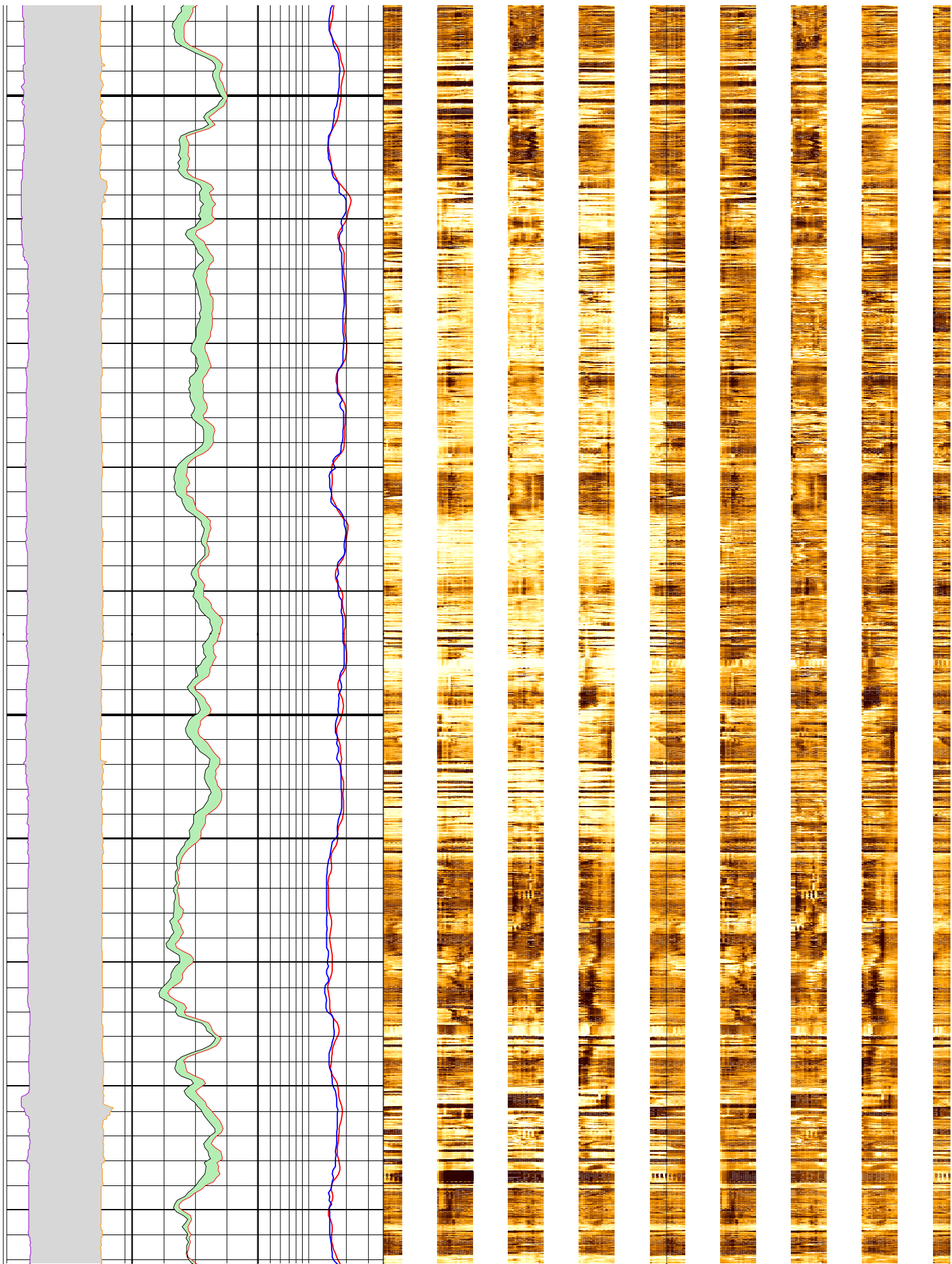
Average heave (peak to peak): 1.75 m. Wireline Heave Compensator used.

	C2_FMS_p2 -20 (in) 20	HSGR_DIT 0 (gAPI) 100		FMS_pass2_static Horizontal Scale: 1 : 6.981 Straight Image			FMS_pass2_dynamic Horizontal Scale: 1 : 6.981 Straight Image				
	C1_FMS_p2 20 (in) -20	HCGR_DIT 0 (gAPI) 100	IMPH_DIT 0.2 (ohm.m) 2	0	120	240	360	0	120	240	360
MD 1 : 200 m	lgp_Area_	lgp_Area_	IDPH_DIT 0.2 (ohm.m) 2	Resistive FMS4 Image Conductive			Resistive FMS4 Image Conductive				



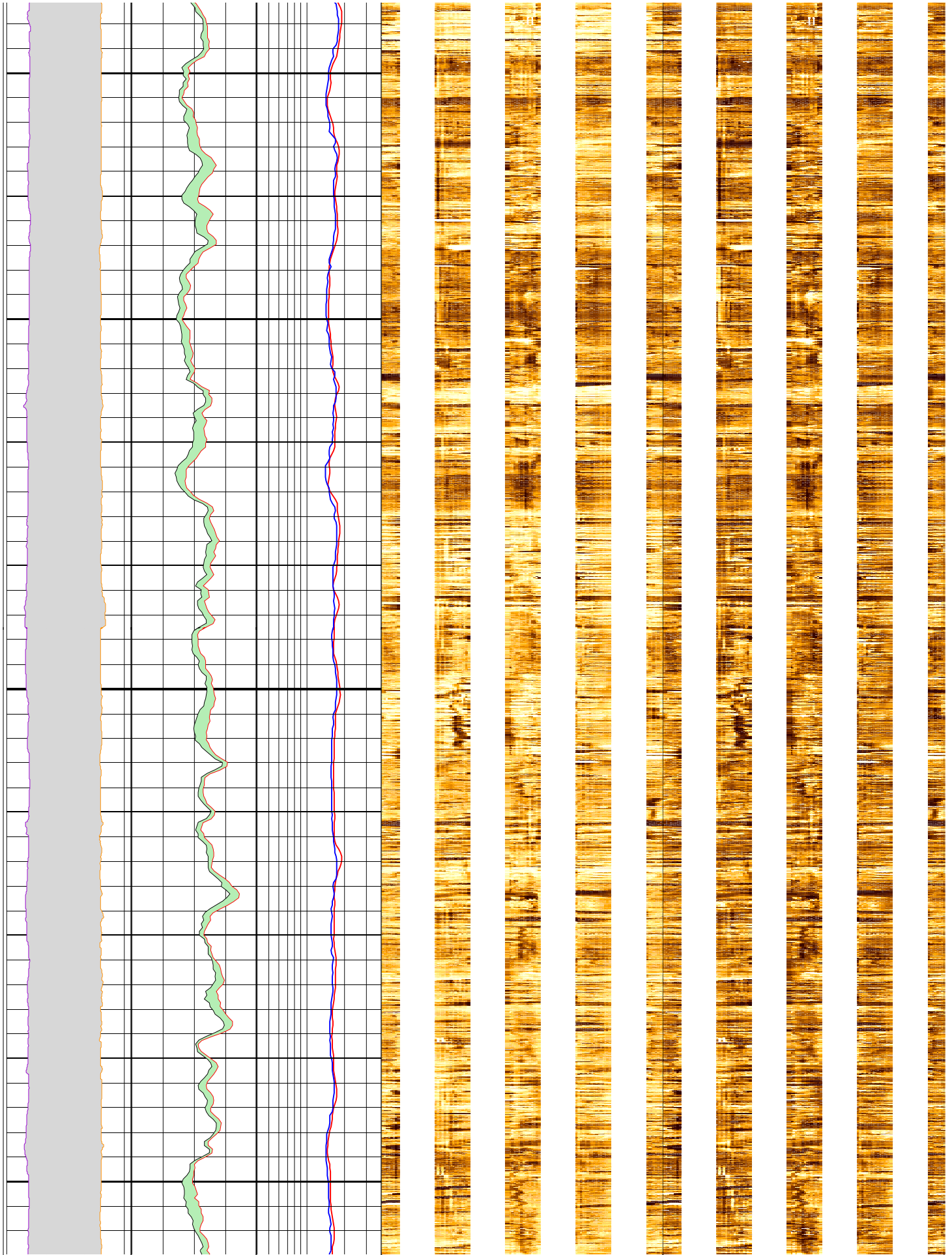
150

175



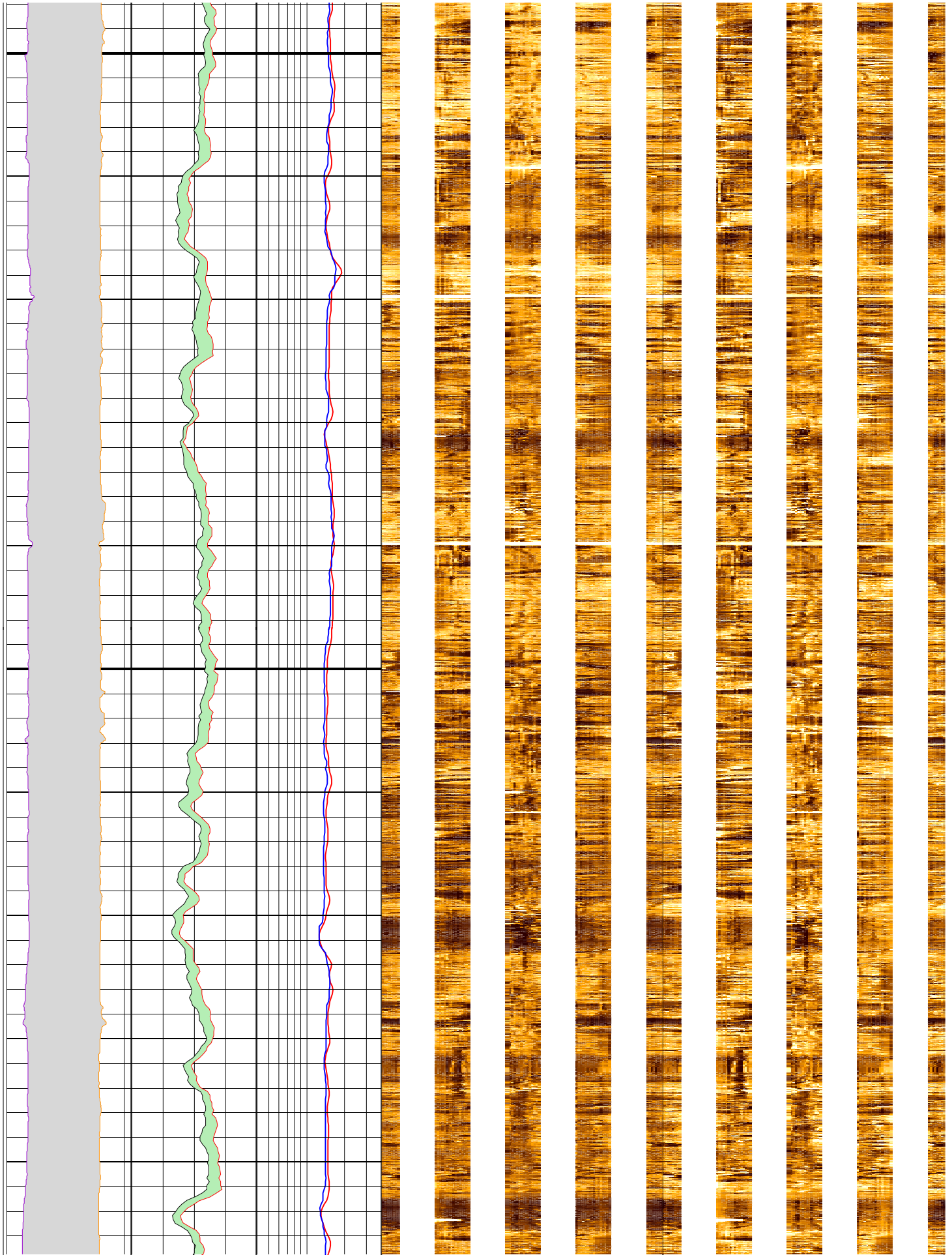
200

225



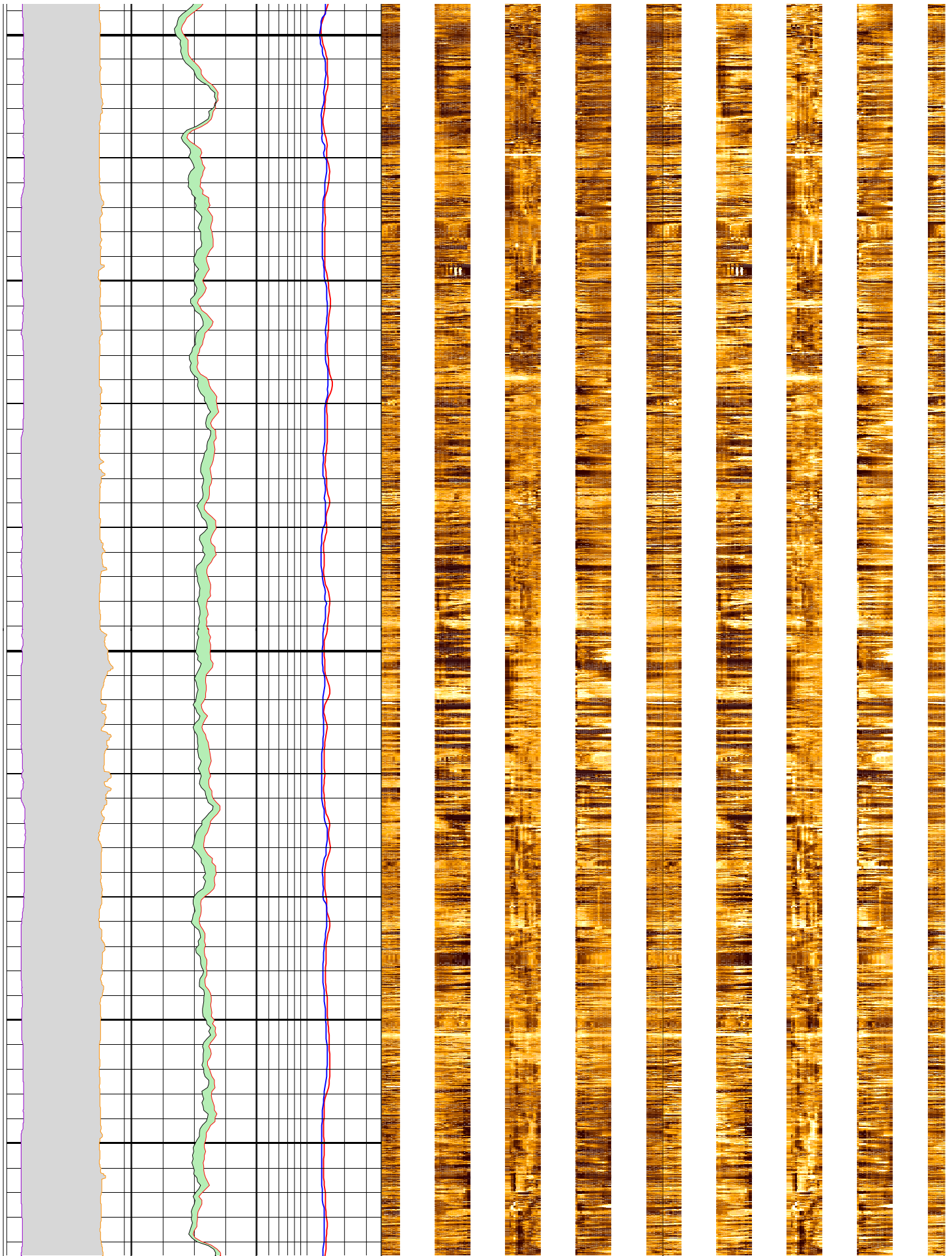
250

275



300

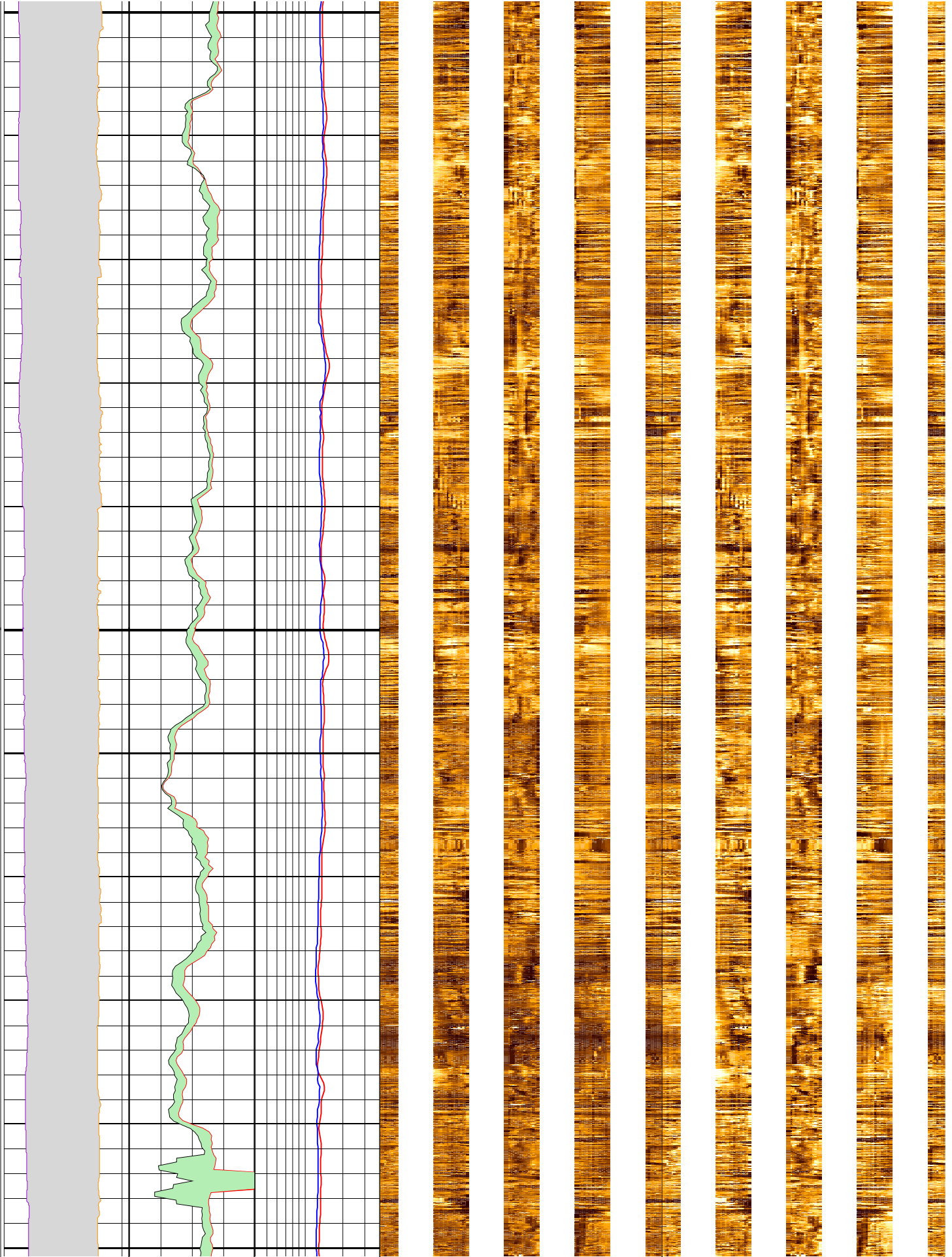
325



350

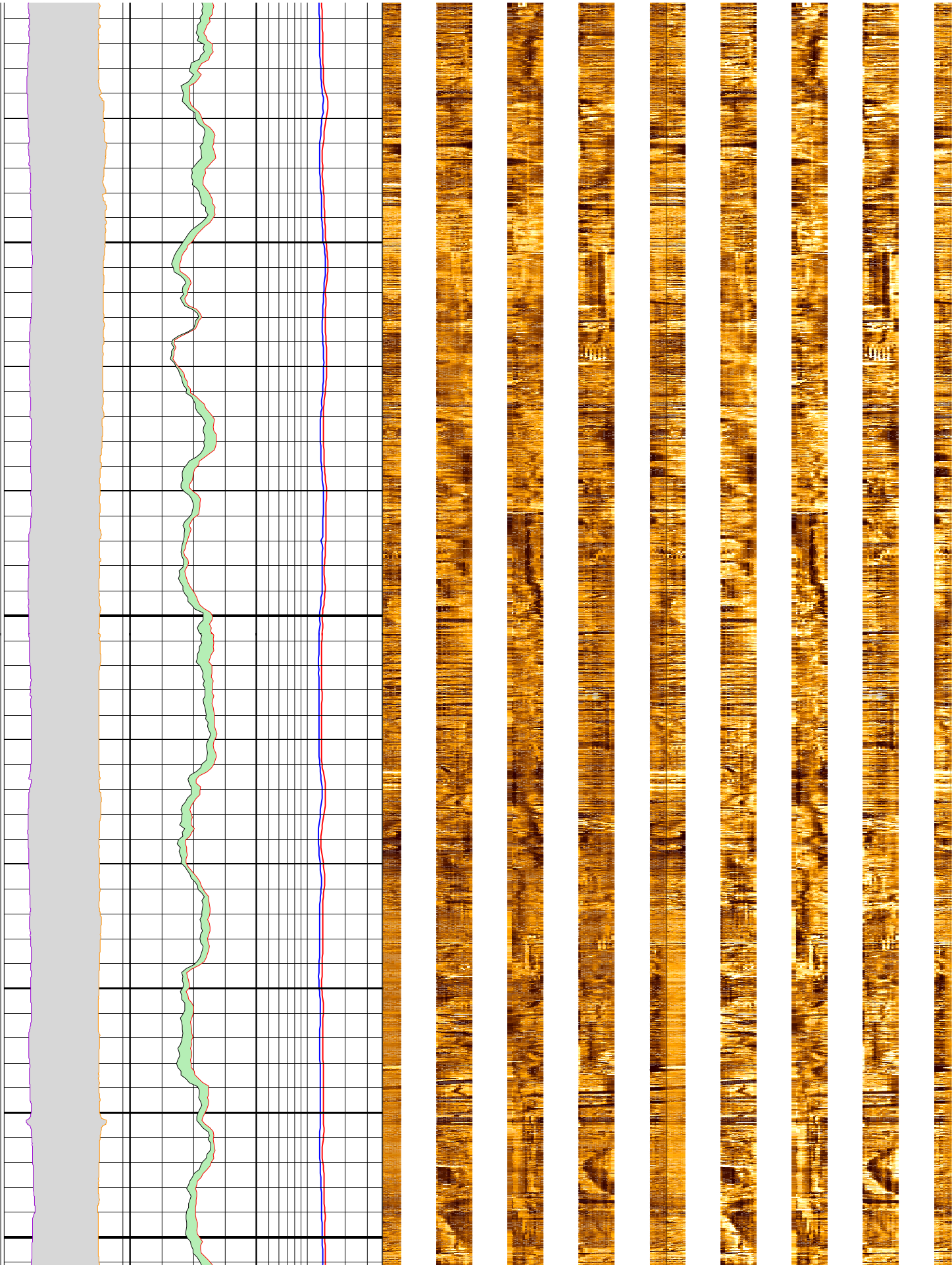
375

400



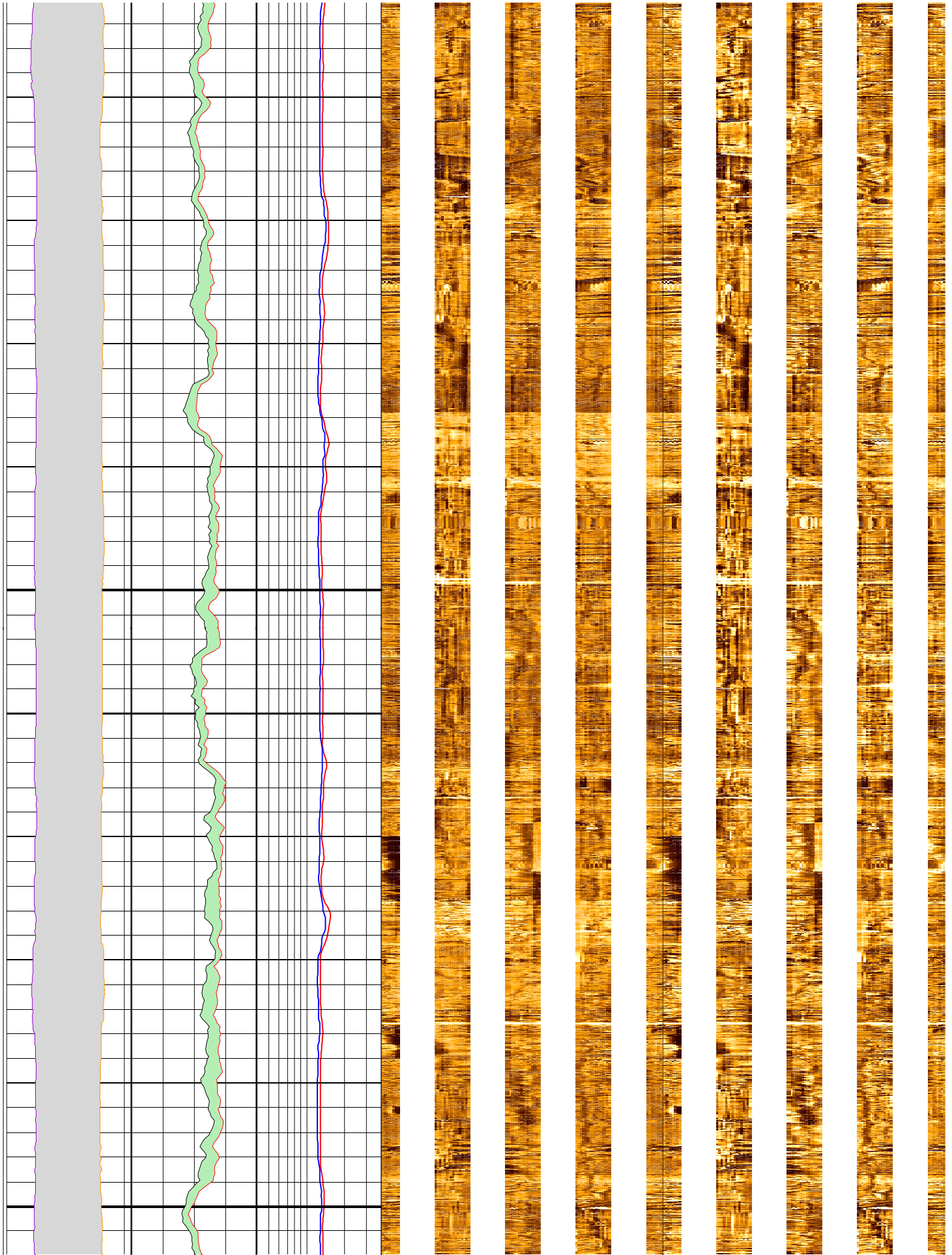
425

450



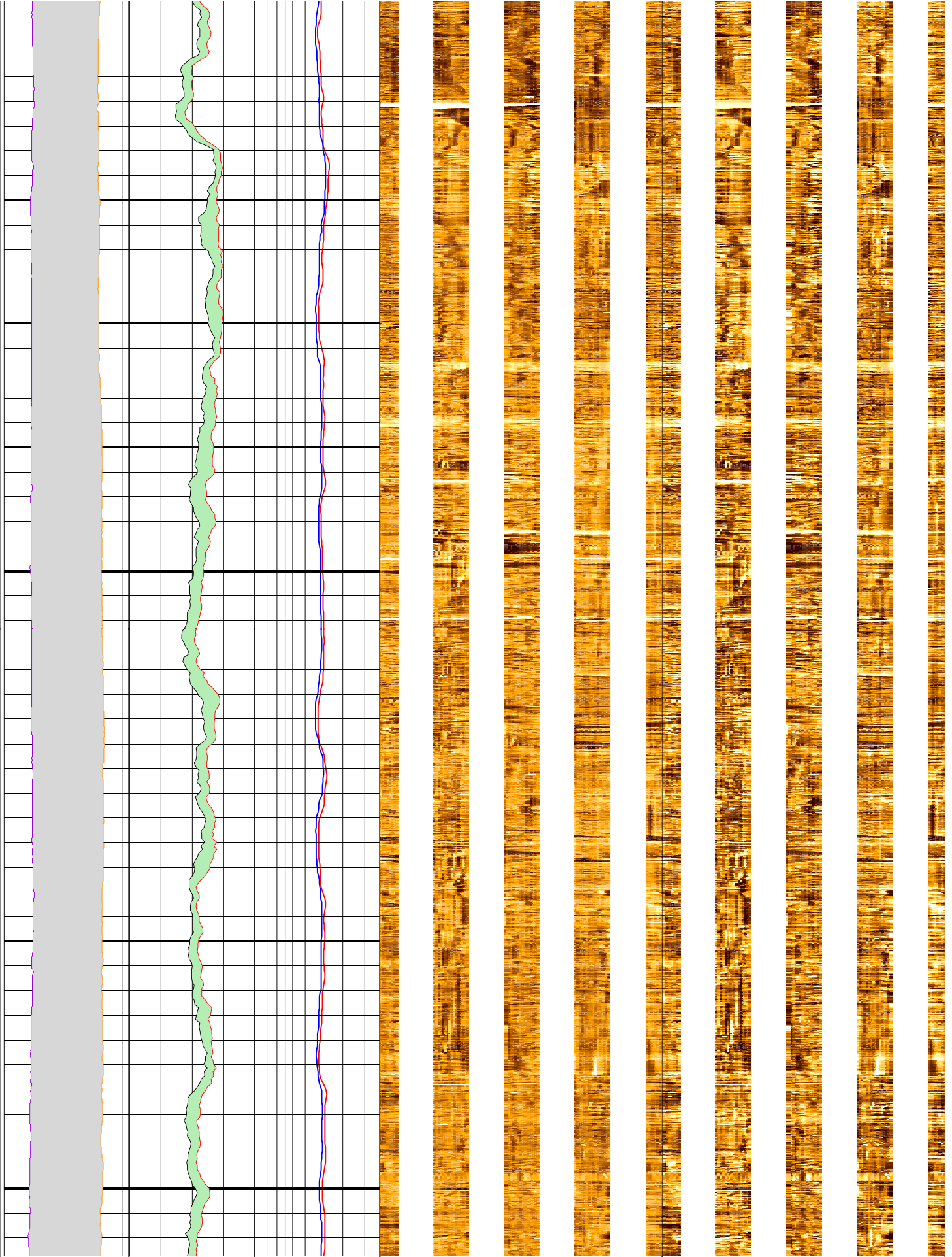
475

500



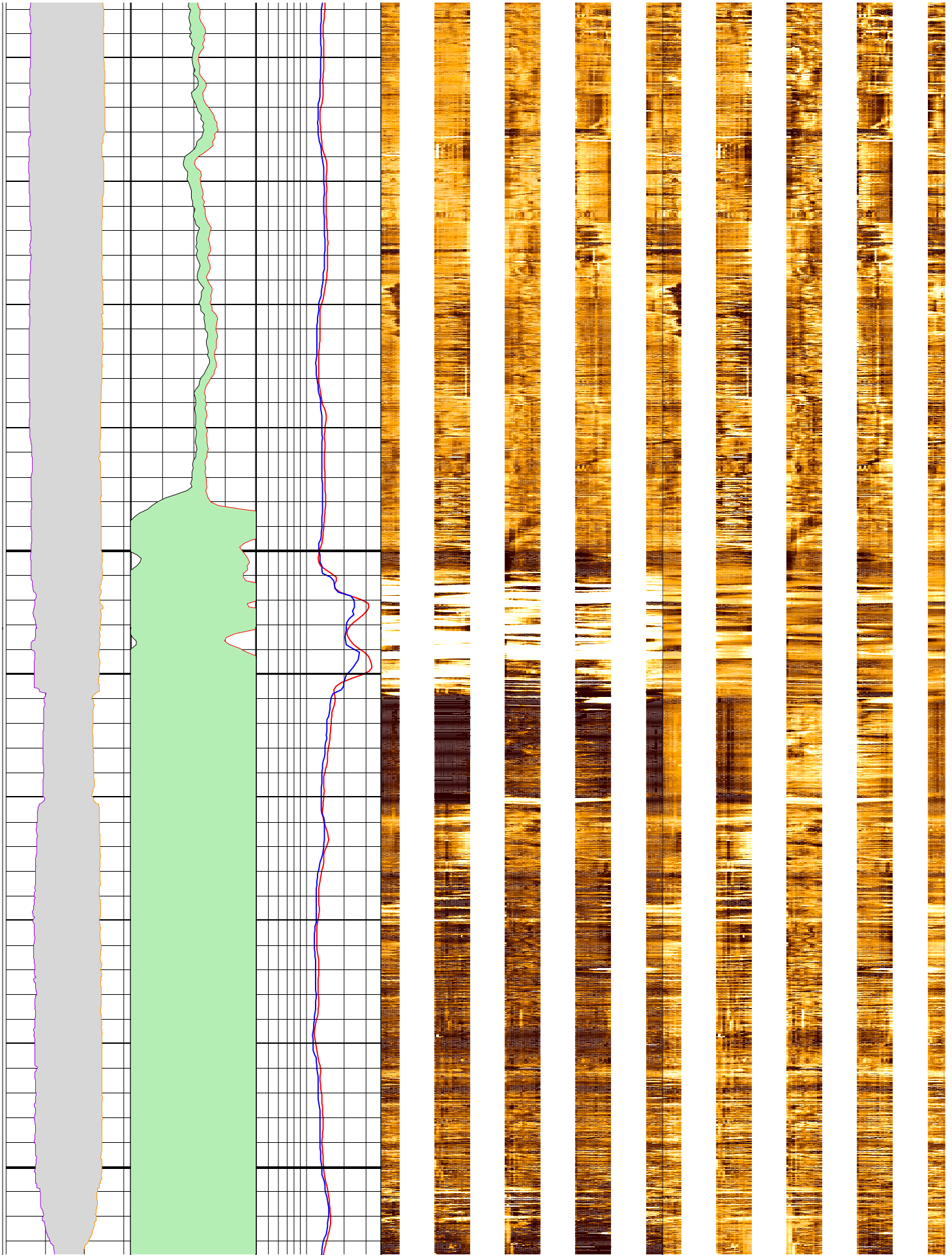
525

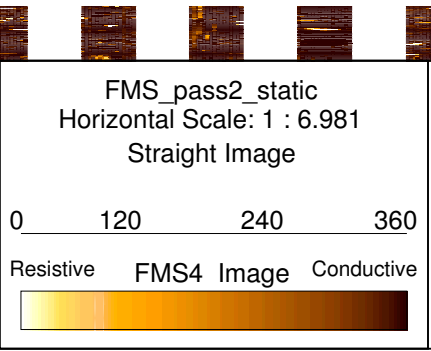
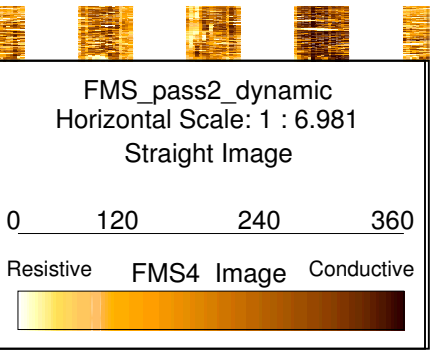
550



575

600



MD 1 : 200 m	lgp_Area_	lgp_Area_	IDPH_DIT 0.2 (ohm.m) 2		
	C1_FMS_p2 20 (in) -20	HCGR_DIT 0 (gAPI)100	IMPH_DIT 0.2 (ohm.m) 2		
	C2_FMS_p2 -20 (in) 20	HSGR_DIT 0 (gAPI)100			