

# Schlumberger

GEOFRAME  
PROCESSED  
INTERPRETATION

# Processed FMS Images Depth Reference: m WMSF

\* A Mark of Schlumberger

Using the following logs: FMS/DIT/HNGS

COMPANY: Lamont Doherty Earth Observatory  
WELL: Expedition 318 Hole U1359D  
FIELD: Wilkes Land Margin  
Rig: JOIDES Resolution  
Country:  
COUNTRY:  
Date Logged: 23-Feb-2010 Date Processed:  
Well Location: Latitude: S 64.9043 Deg  
Longitude: E 143.9593 Deg  
Elevations: KB: 11m DF: 11m GL: 3019.5m  
API Number: Job Number:

FOLD HERE The well name, location and borehole reference data were furnished by the customer.

All interpretations are opinions based on inferences from electrical or other measurements and we cannot, and do not guarantee the accuracy or correctness of any interpretation, and we shall not, except in the case of gross or willful negligence on our part, be liable or responsible for any loss, costs, damages or expenses incurred or sustained by anyone resulting from any interpretations made by any of our officers, agents or employees. These interpretations are also subject to Clause 4 of our General Terms and Conditions as set out in our current Price Schedule.

Field Recording:	Location:	Software Version: 17C0-154	Engineer: K. Swain
------------------	-----------	----------------------------	--------------------

Office Recording:	ICS Center:	Baseline:	Log Analyst:
-------------------	-------------	-----------	--------------

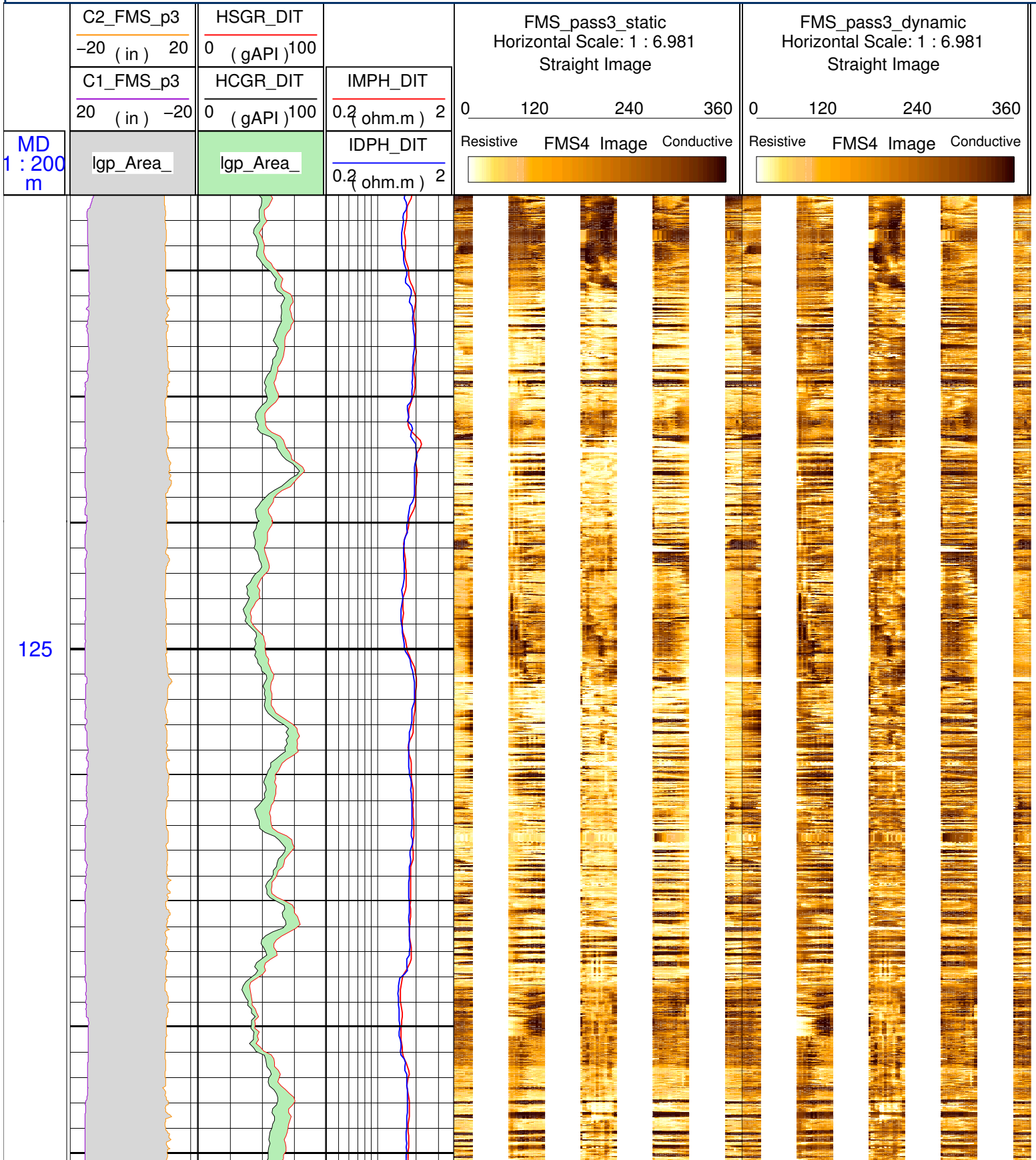
### Mud and Borehole Measurements:

Rm @ Measured Temperature: @	BHT: 12.2degC	Bitsize: 9.875in
Rmf @ Measured Temperature: @	Type Fluid in Hole:	Sepiolite Sea Water Gel
Rmc @ Measured Temperature: @	Mud Density: 1.22g/cm3	

### Remarks:

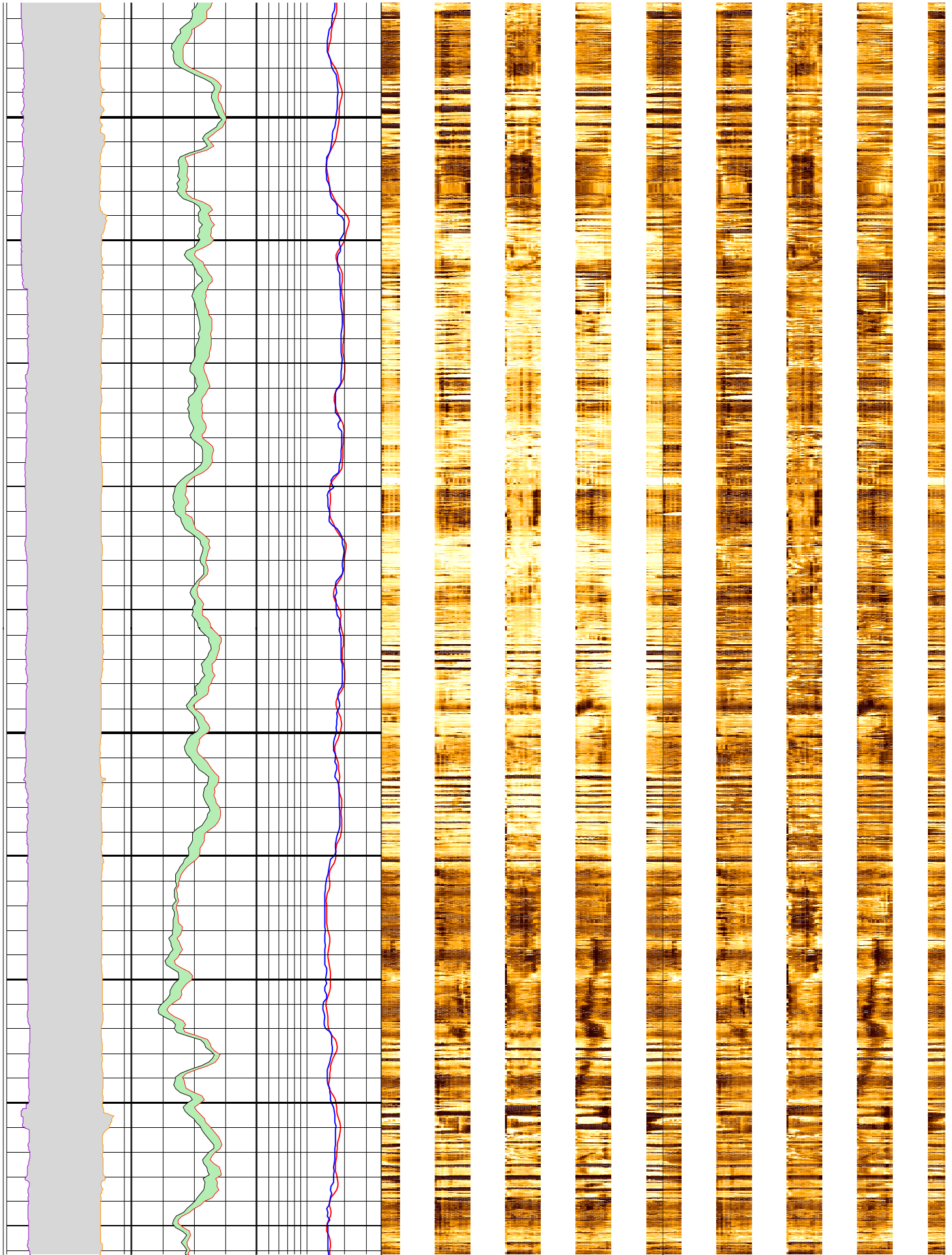
Data depth-shifted and depth-matched. Depth reference: m WMSF.  
Drill pipe at 100 m WMSF. Water depth: 3019.5 m WRF.

Average heave (peak to peak): 1.75 m. Wireline Heave Compensator used.



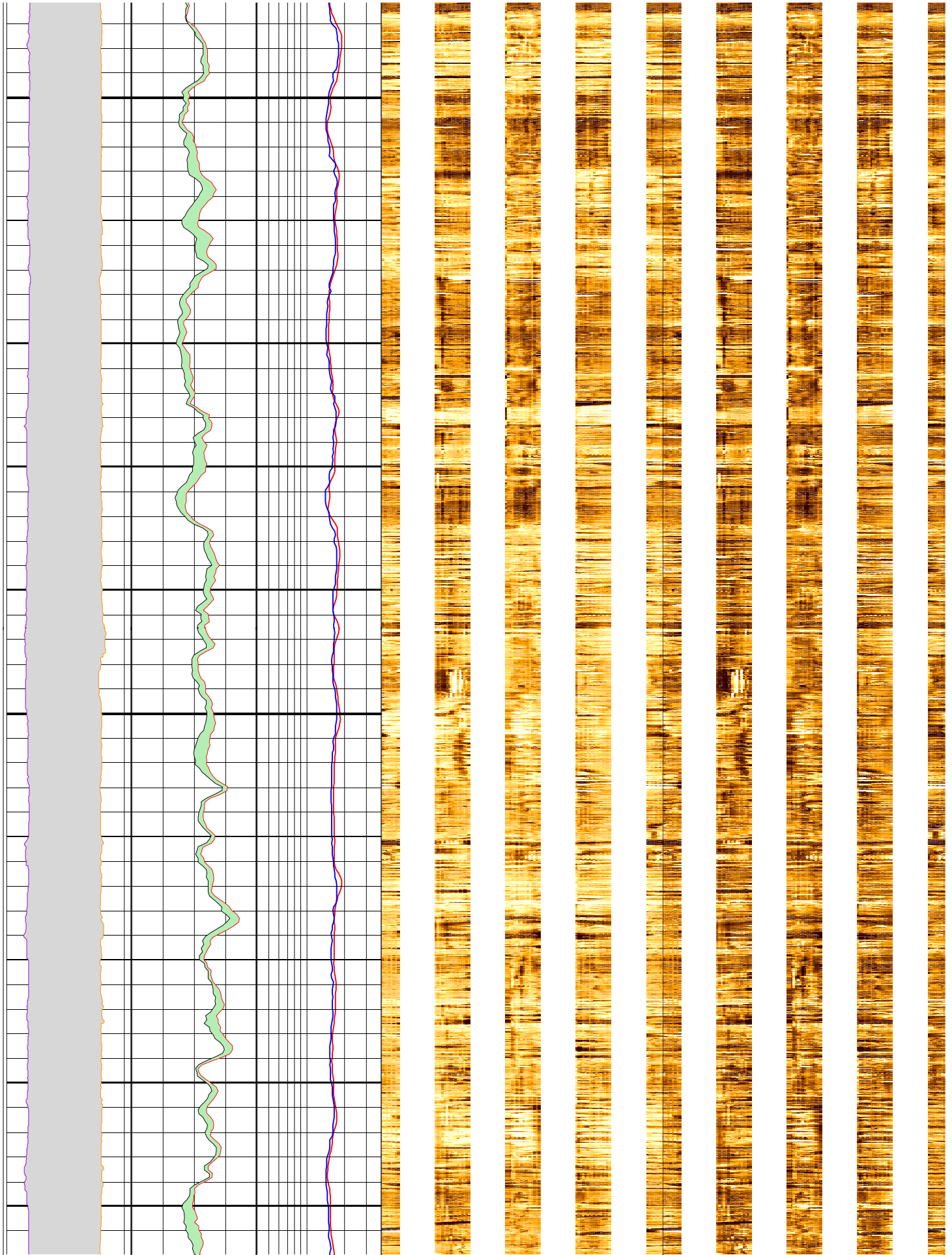
150

175



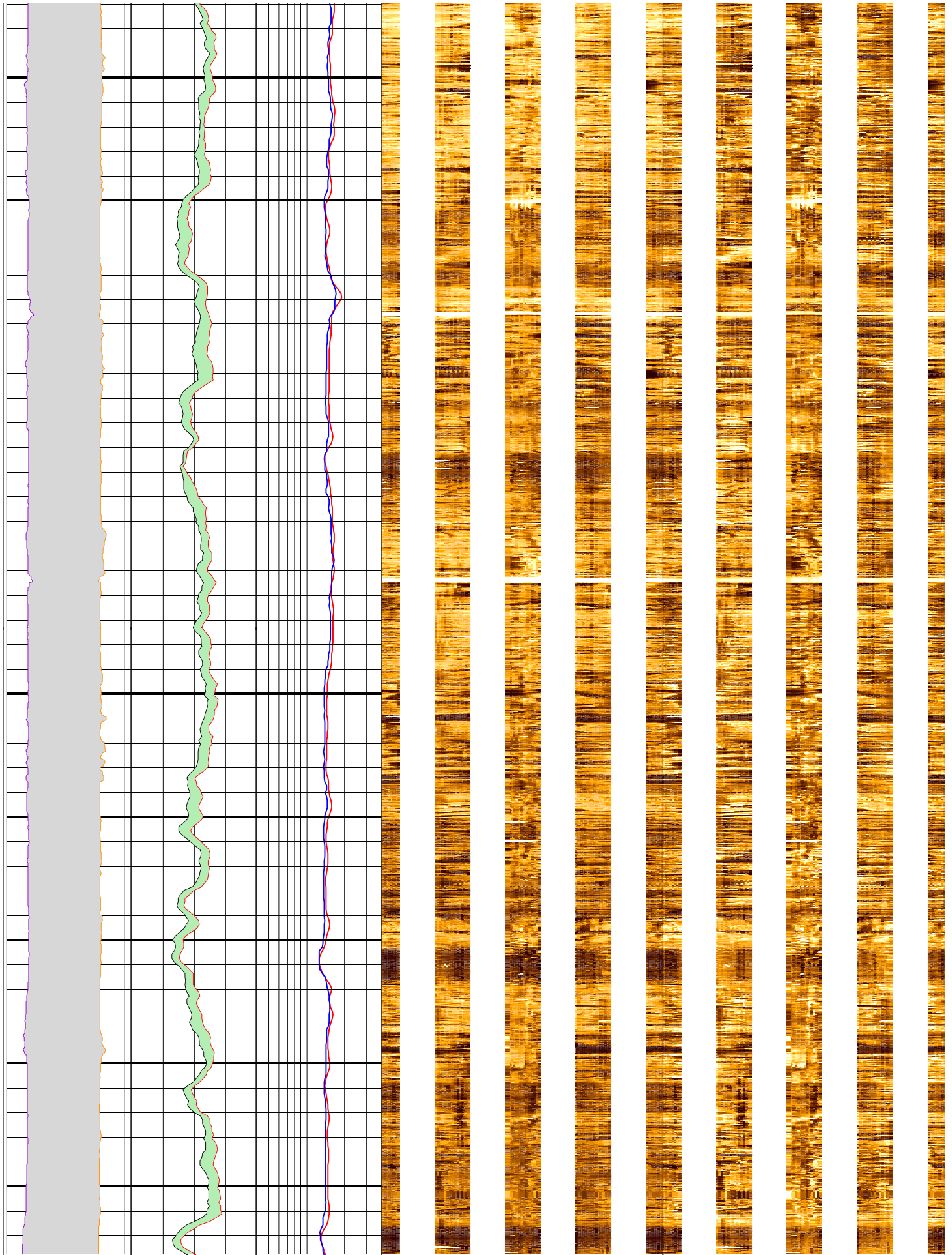
200

225



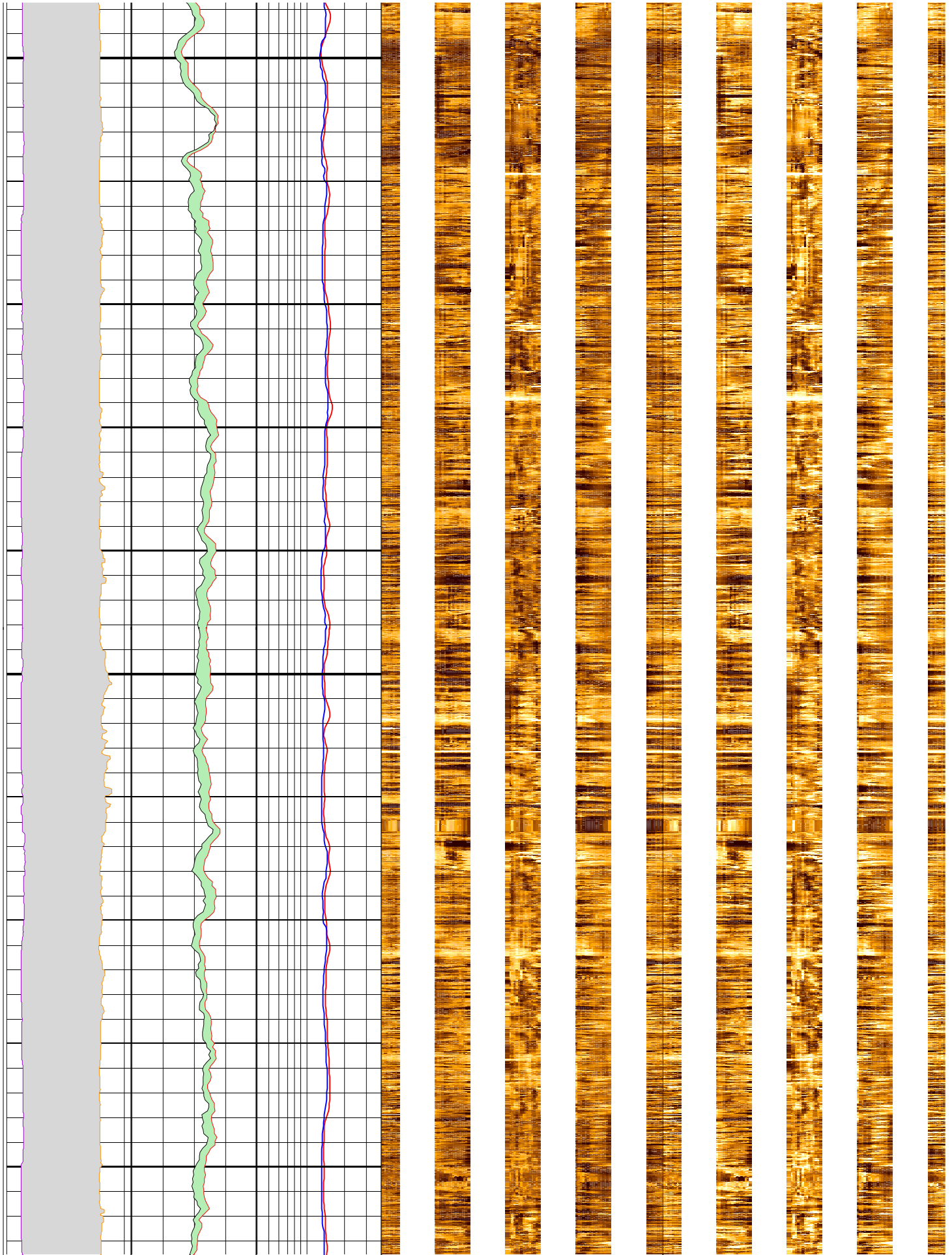
250

275



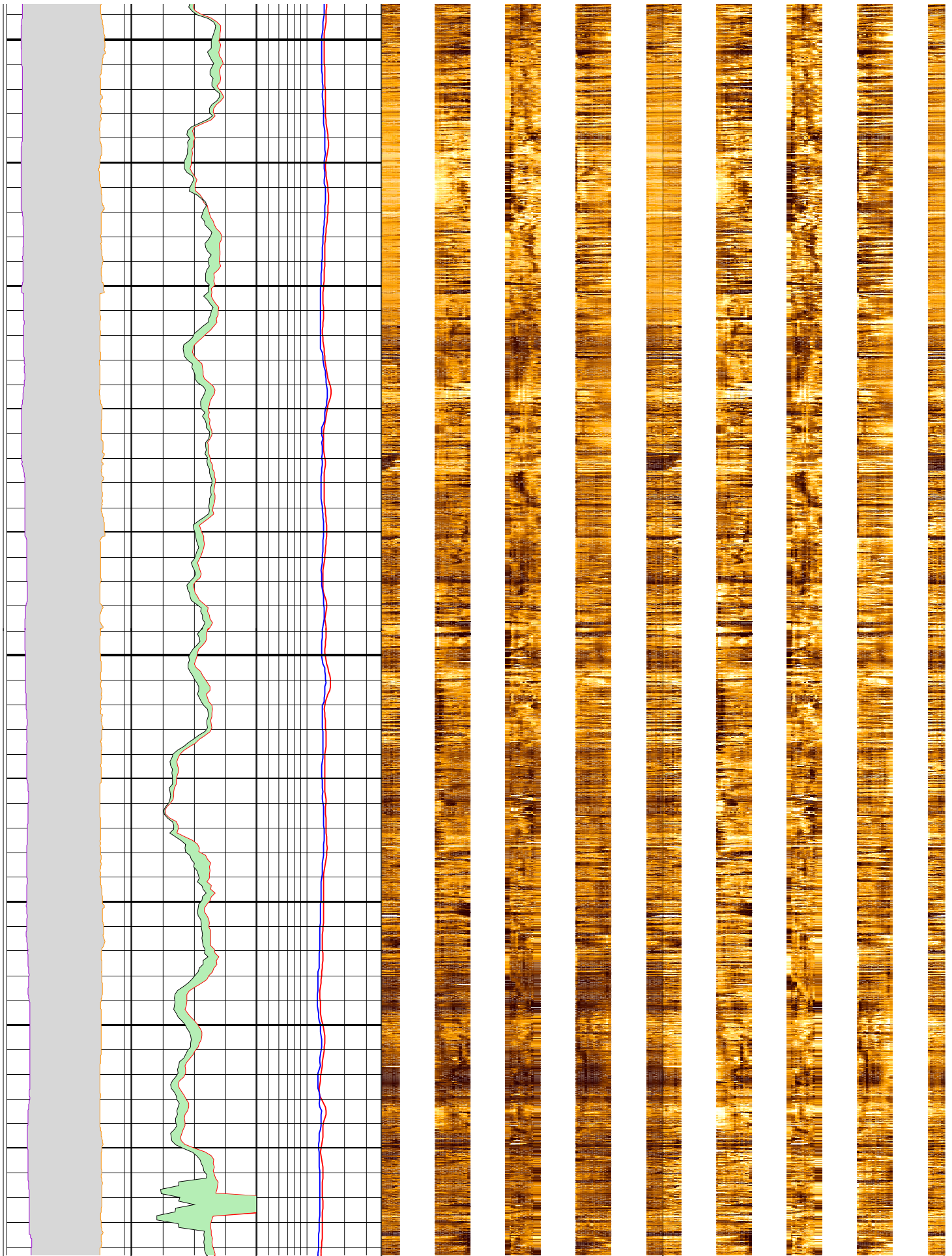
300

325



350

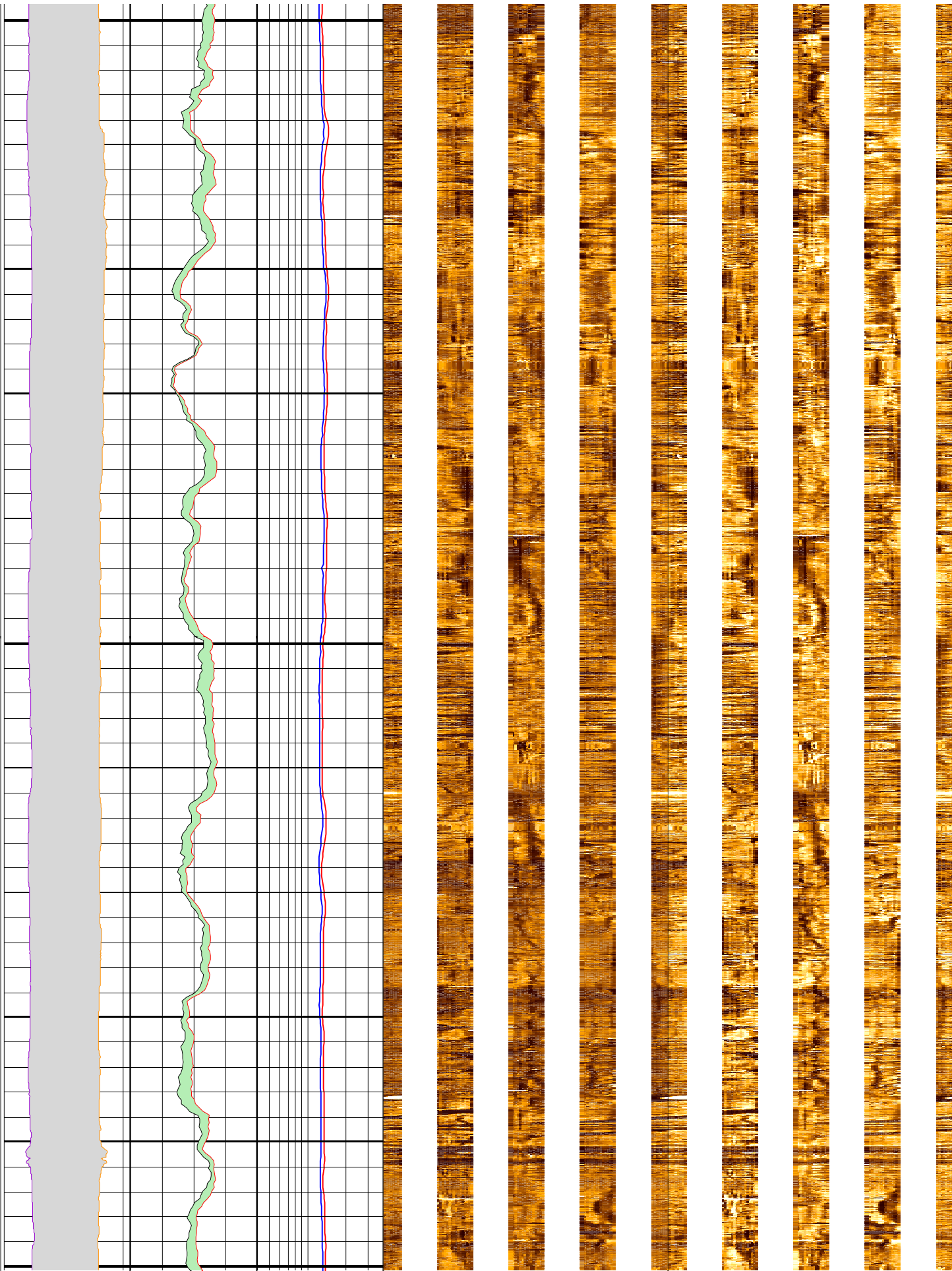
375



400

425

450

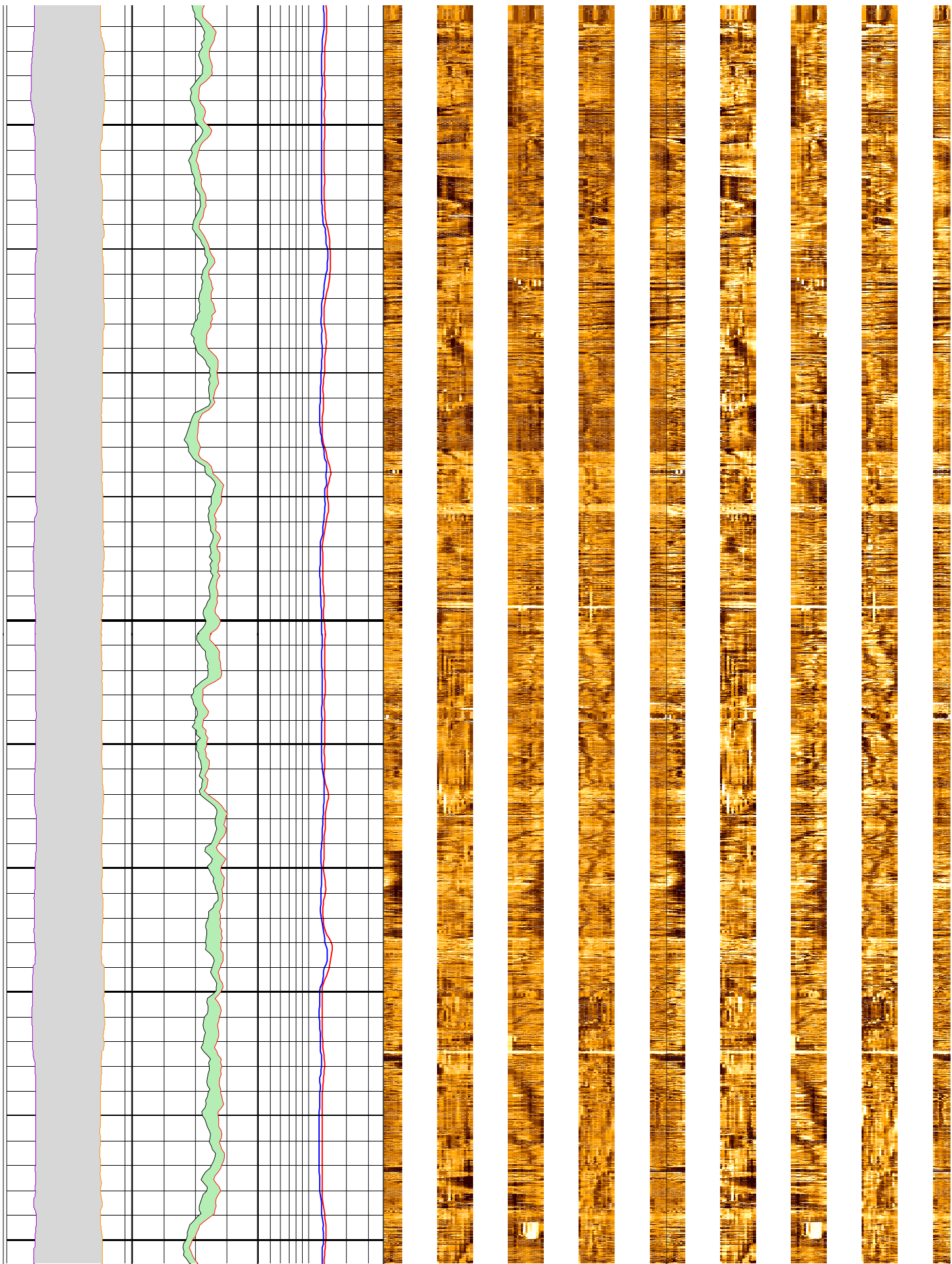




700

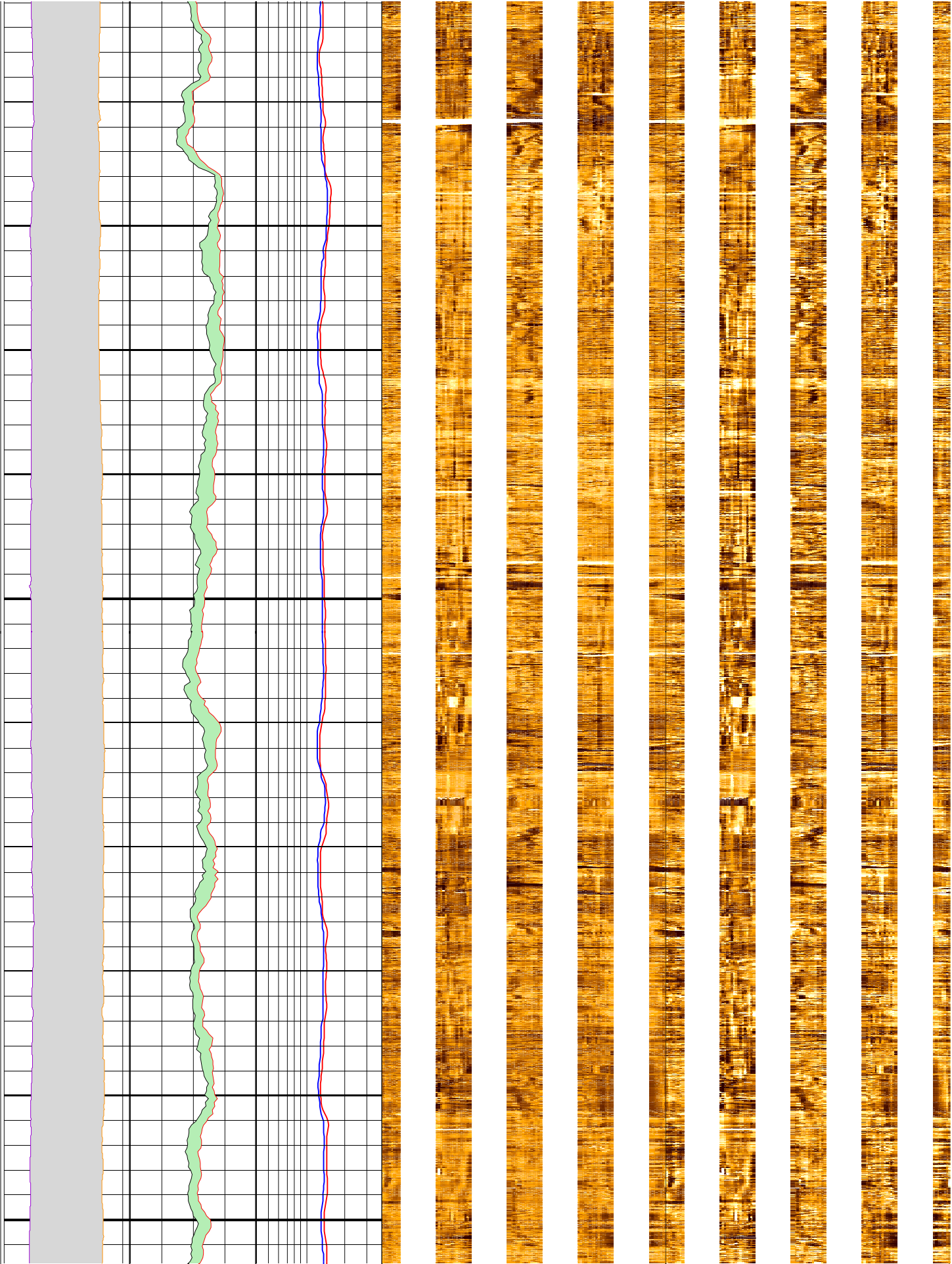
475

500



525

550



575

600

