

Schlumberger

GEOFRAME
PROCESSED
INTERPRETATION

Processed FMS Images Depth Reference: m WMSF

* A Mark of Schlumberger

Using the following logs: FMS

COMPANY: Lamont Doherty
WELL: Expedition 336 Site U1382A
FIELD: Mid Atlantic Ridge

COUNTRY:
Date Logged: 9-Oct-2011 Date Processed:
Well Location:

Elevations: KB: 11m DF: 11m GL: -4497m
API Number: Job Number:

FOLD HERE The well name, location and borehole reference data were furnished by the customer.

All interpretations are opinions based on inferences from electrical or other measurements and we cannot, and do not guarantee the accuracy or correctness of any interpretation, and we shall not, except in the case of gross or willful negligence on our part, be liable or responsible for any loss, costs, damages or expenses incurred or sustained by anyone resulting from any interpretations made by any of our officers, agents or employees. These interpretations are also subject to Clause 4 of our General Terms and Conditions as set out in our current Price Schedule.

Field Recording:	Location:	Software Version: 19C0-187	Engineer: C. Furman
------------------	-----------	----------------------------	---------------------

Office Recording:	ICS Center:	Baseline: 4.5	Log Analyst:
-------------------	-------------	---------------	--------------

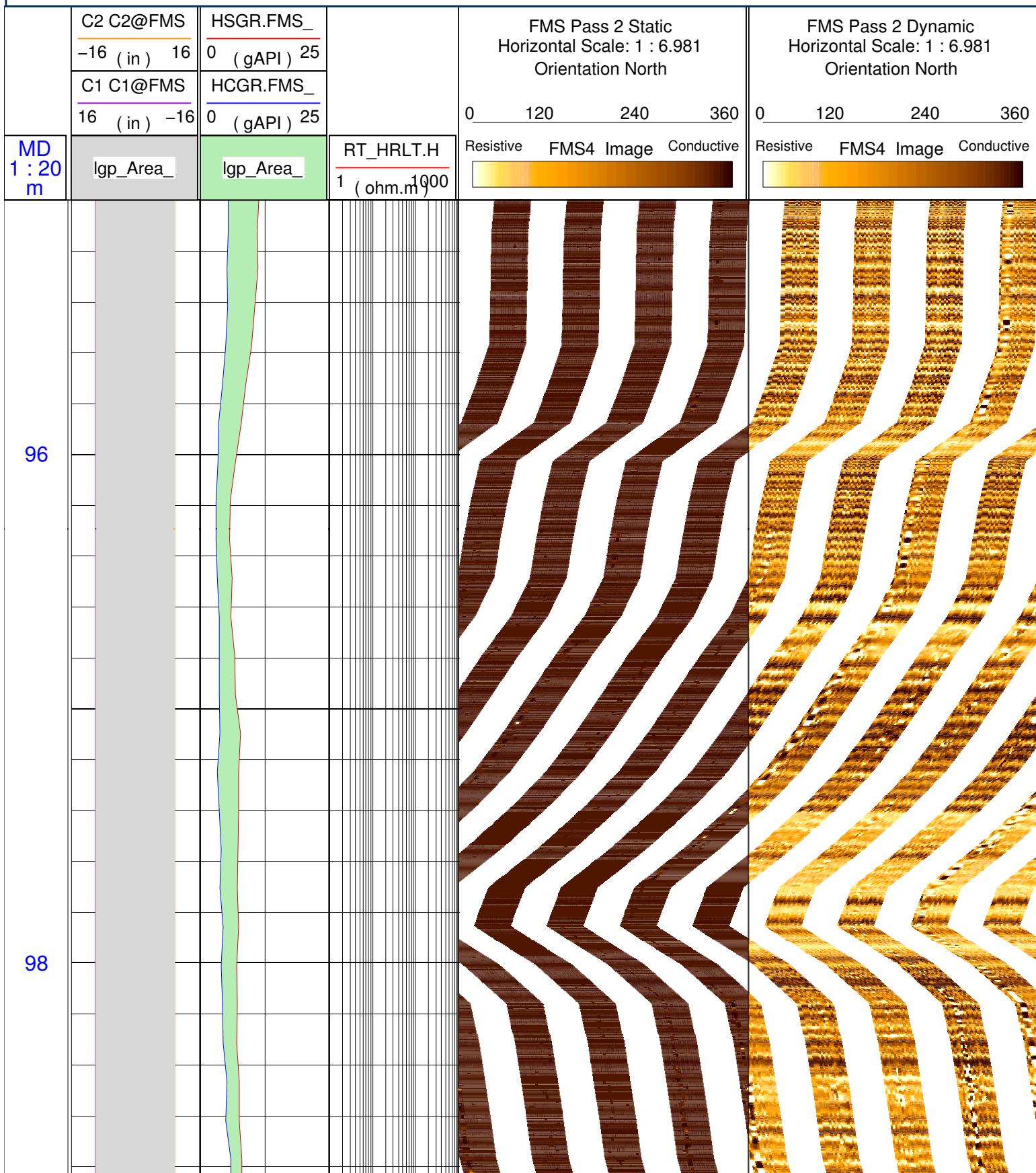
Mud and Borehole Measurements:

Rm @ Measured Temperature: @	BHT: 100degC	Bitsize: 9.875in
Rmf @ Measured Temperature: @	Type Fluid in Hole:	Seawater
Rmc @ Measured Temperature: @	Mud Density: 1.05g/cm3	

Remarks:

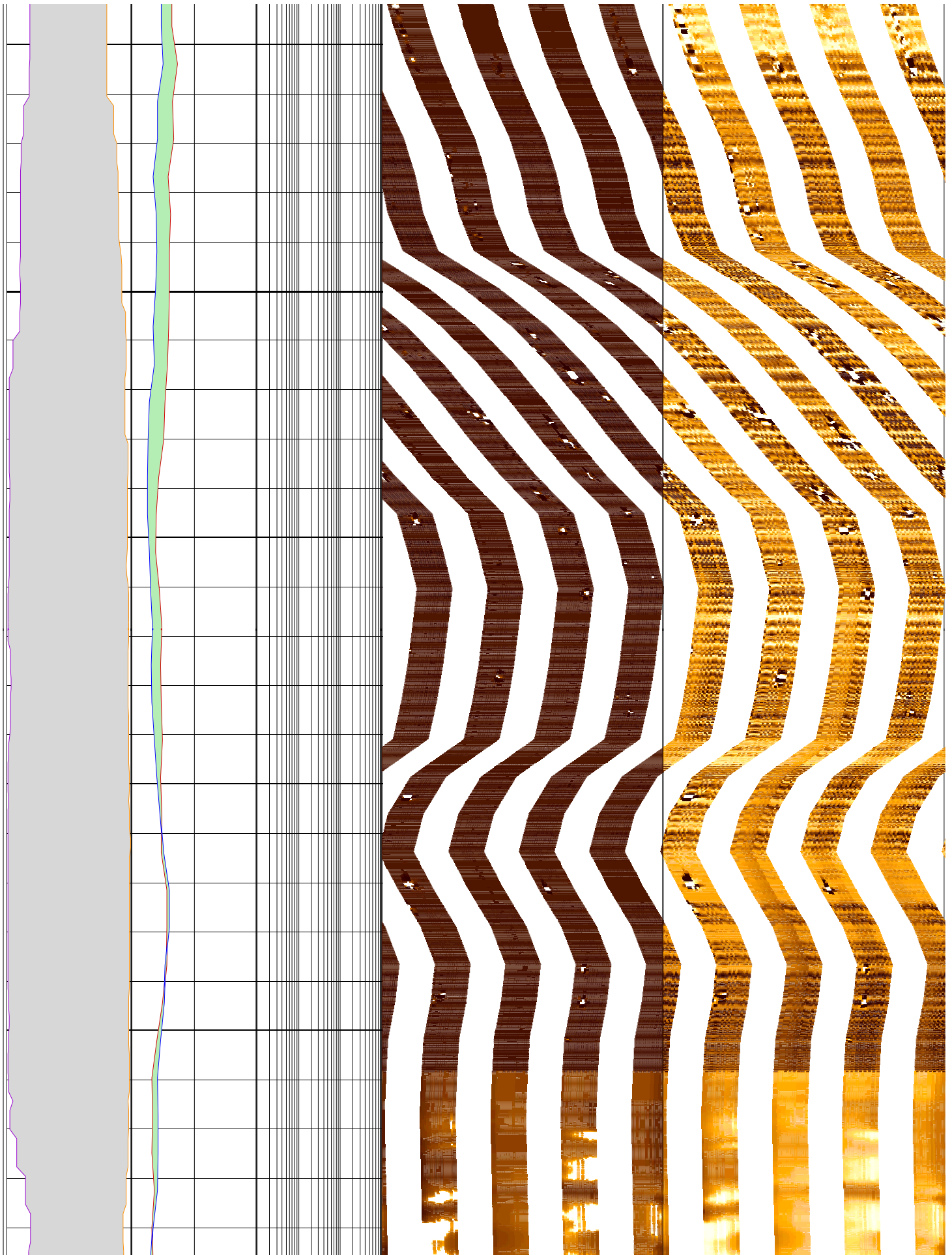
Hole 395A was drilled and had a CORK installed in 1997 during Leg 174. This is a re-cork.
Logs conducted to run experimental microbiology tool "DEBI-T" from JPL / USC.

Data depth-shifted and depth-matched. Depth reference: m WMSF. Drill pipe at 58 m WMSF. Water depth at 4497 m WMSF. Average peak-to-peak heave: 0.6 m. Wireline heave compensator not used during the logging operation.



100

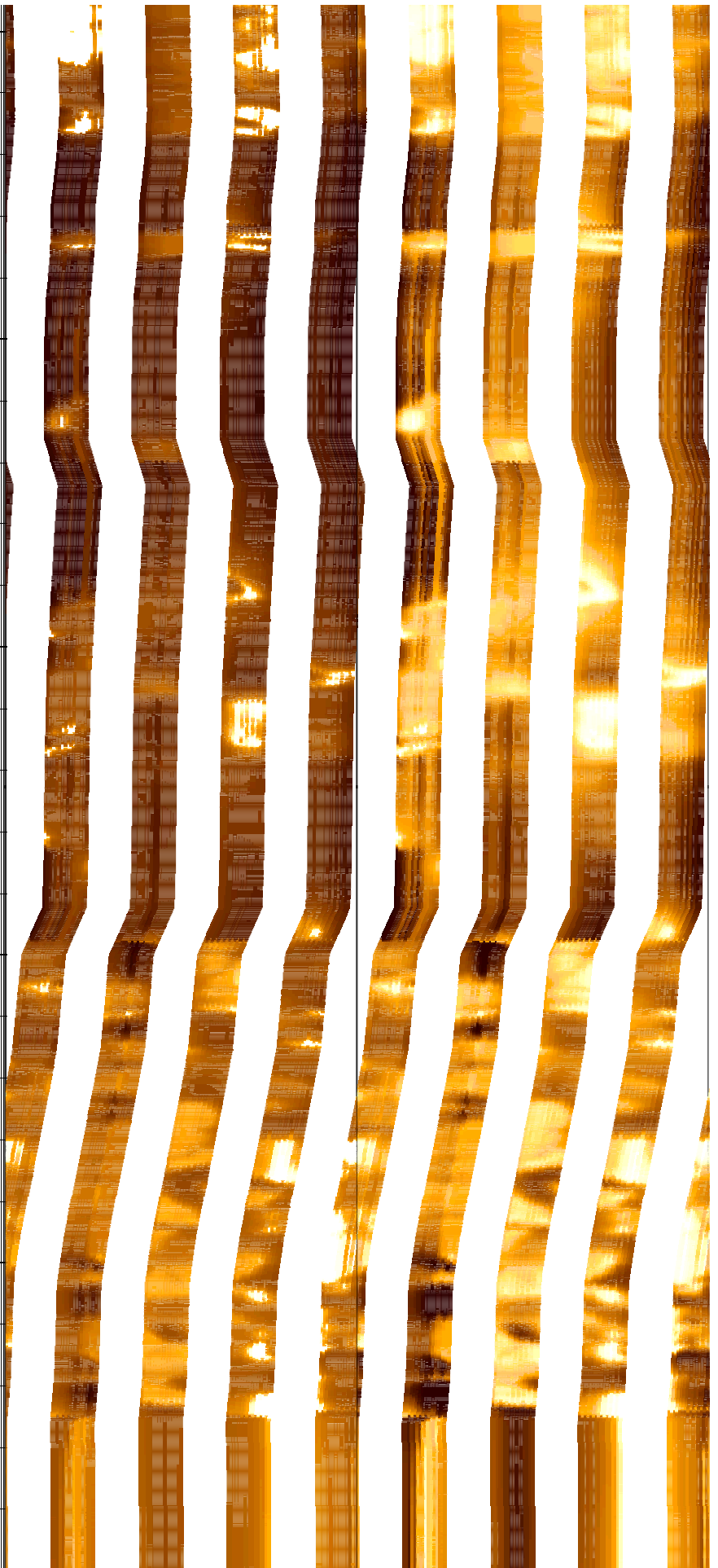
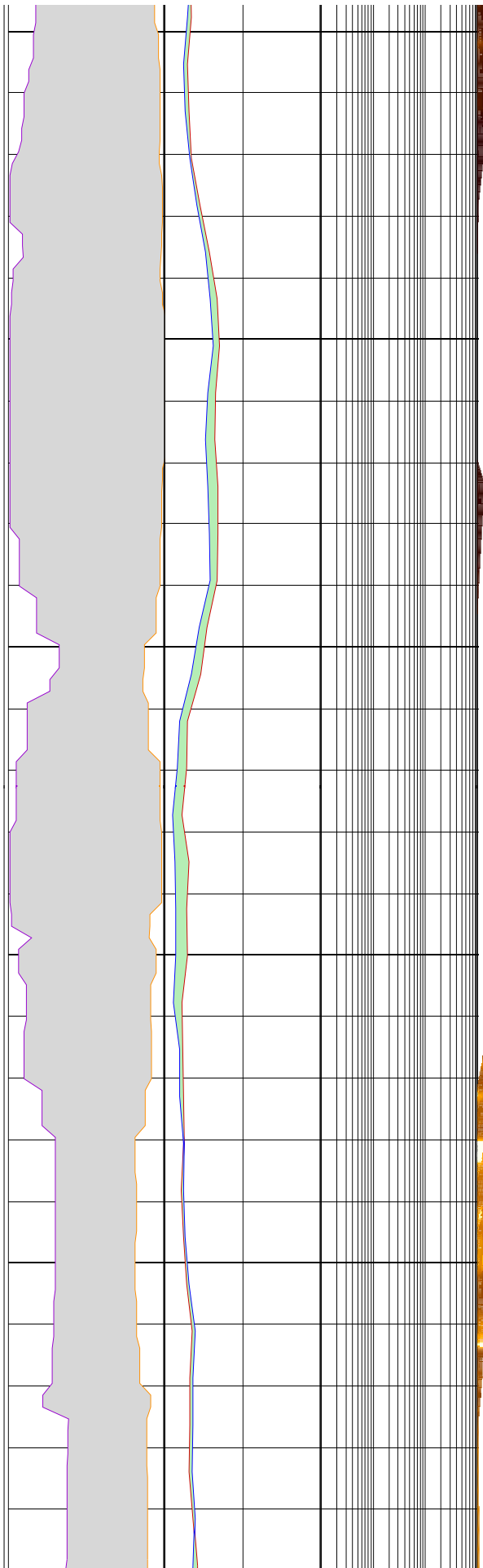
102



104

106

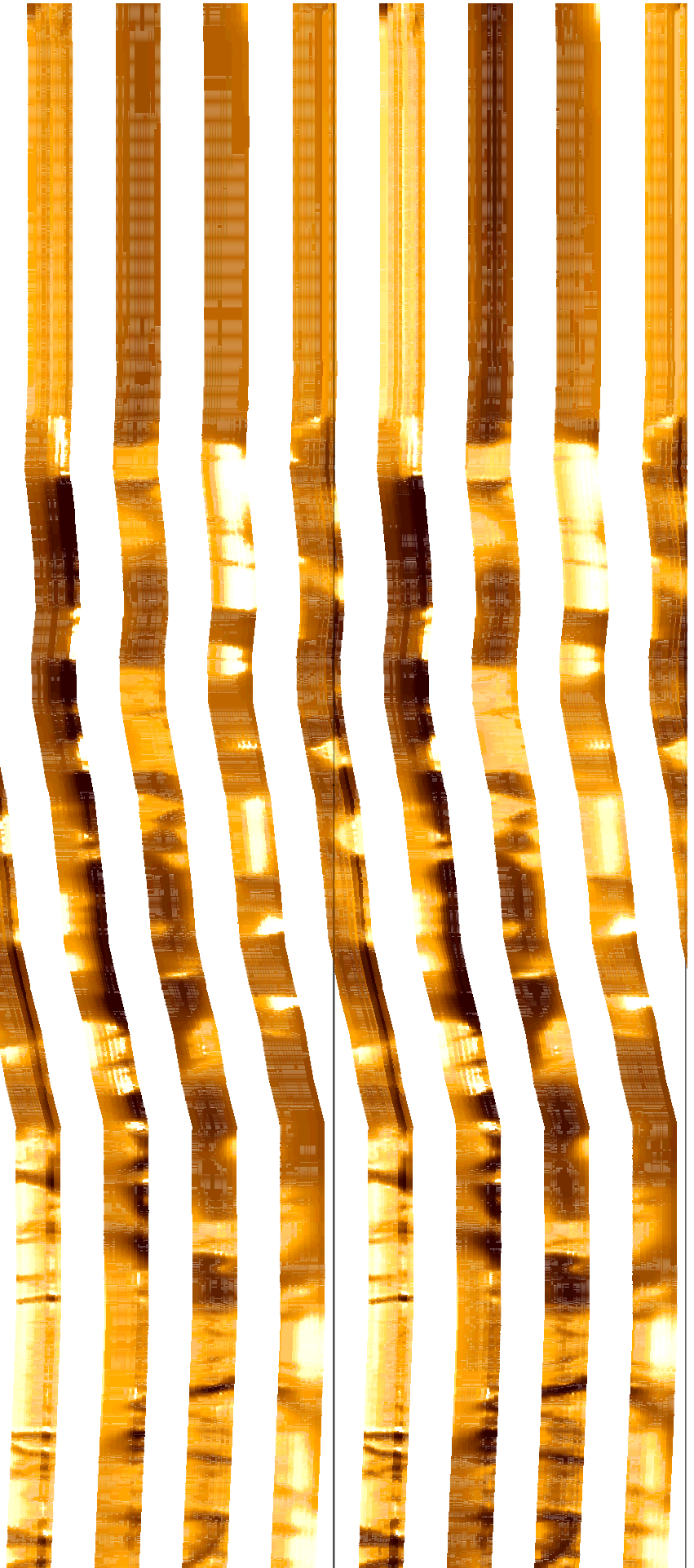
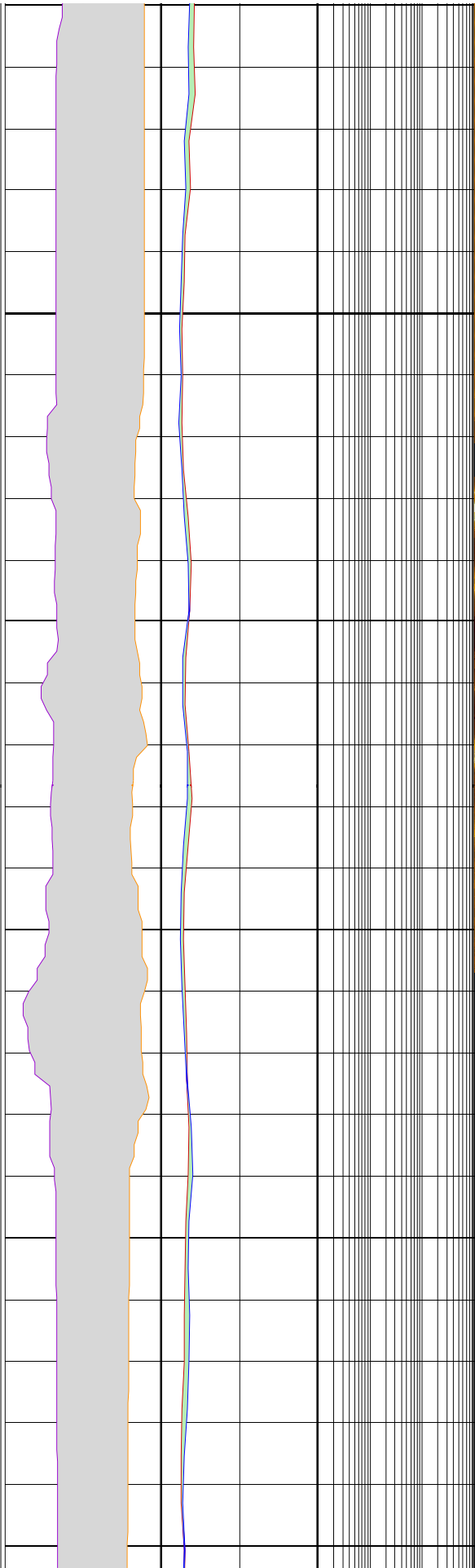
108



110

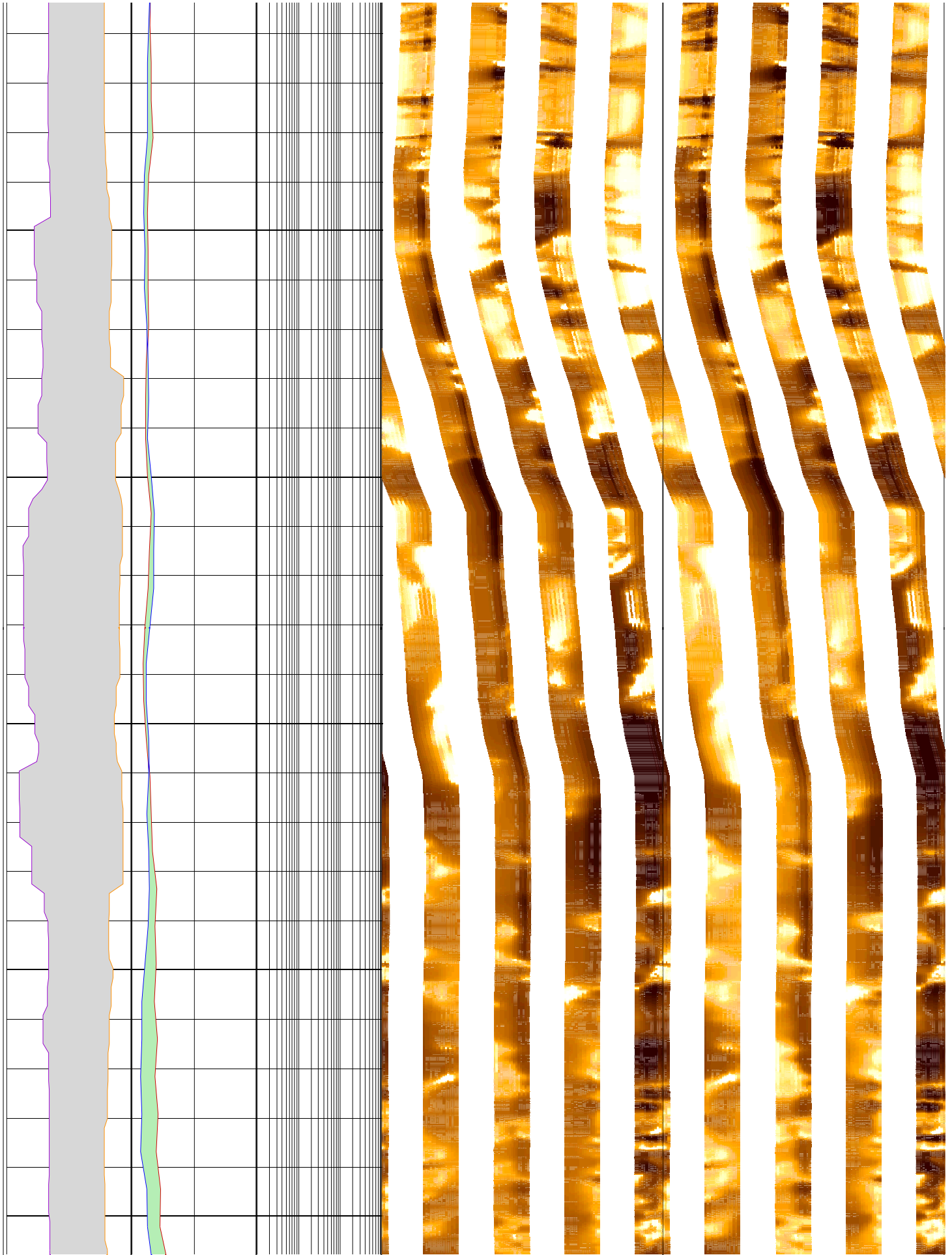
112

114



116

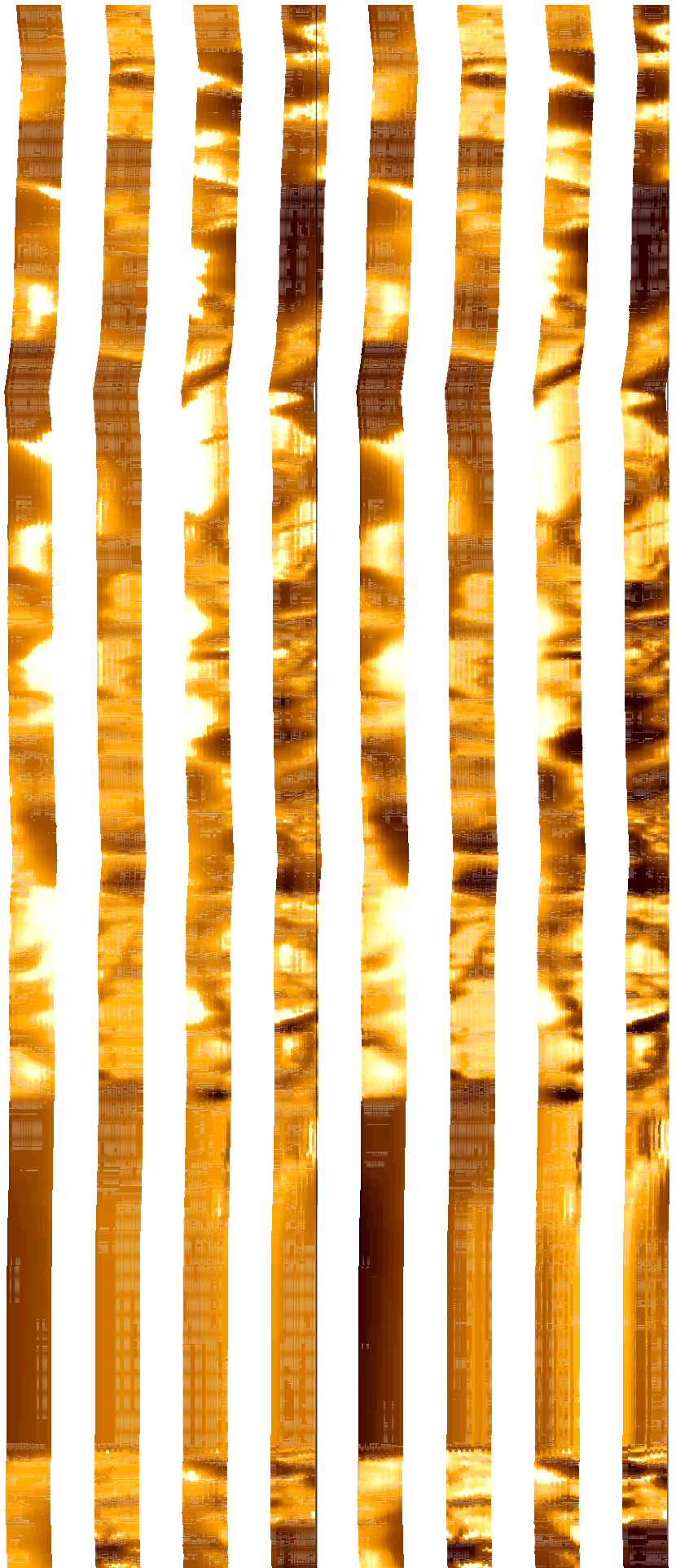
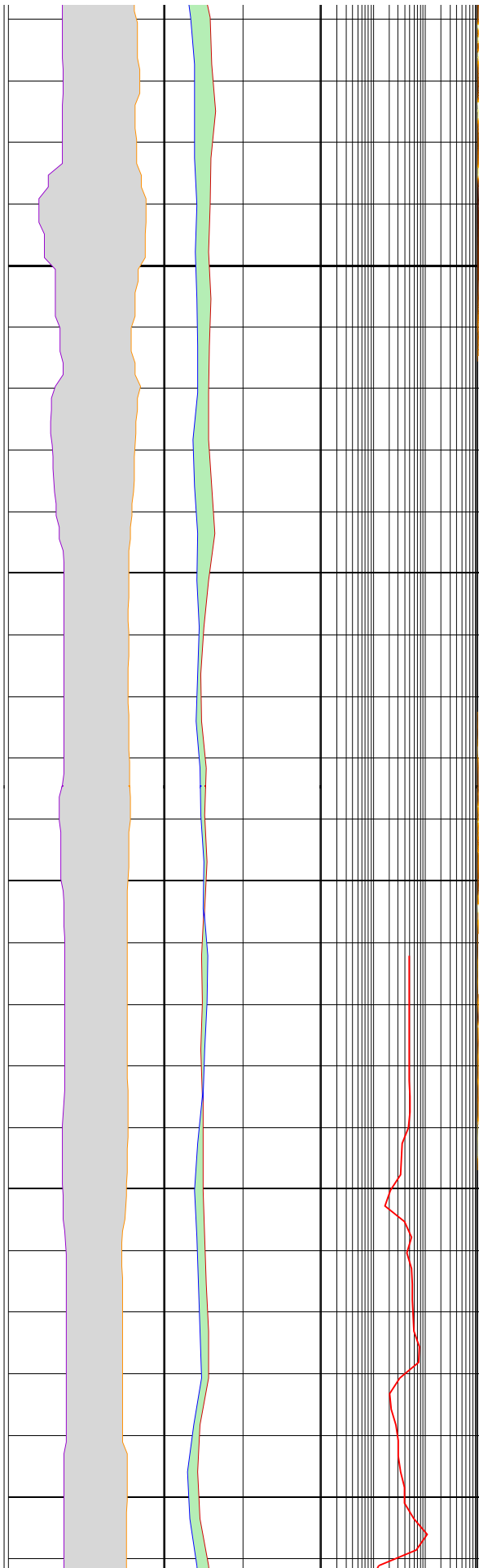
118



120

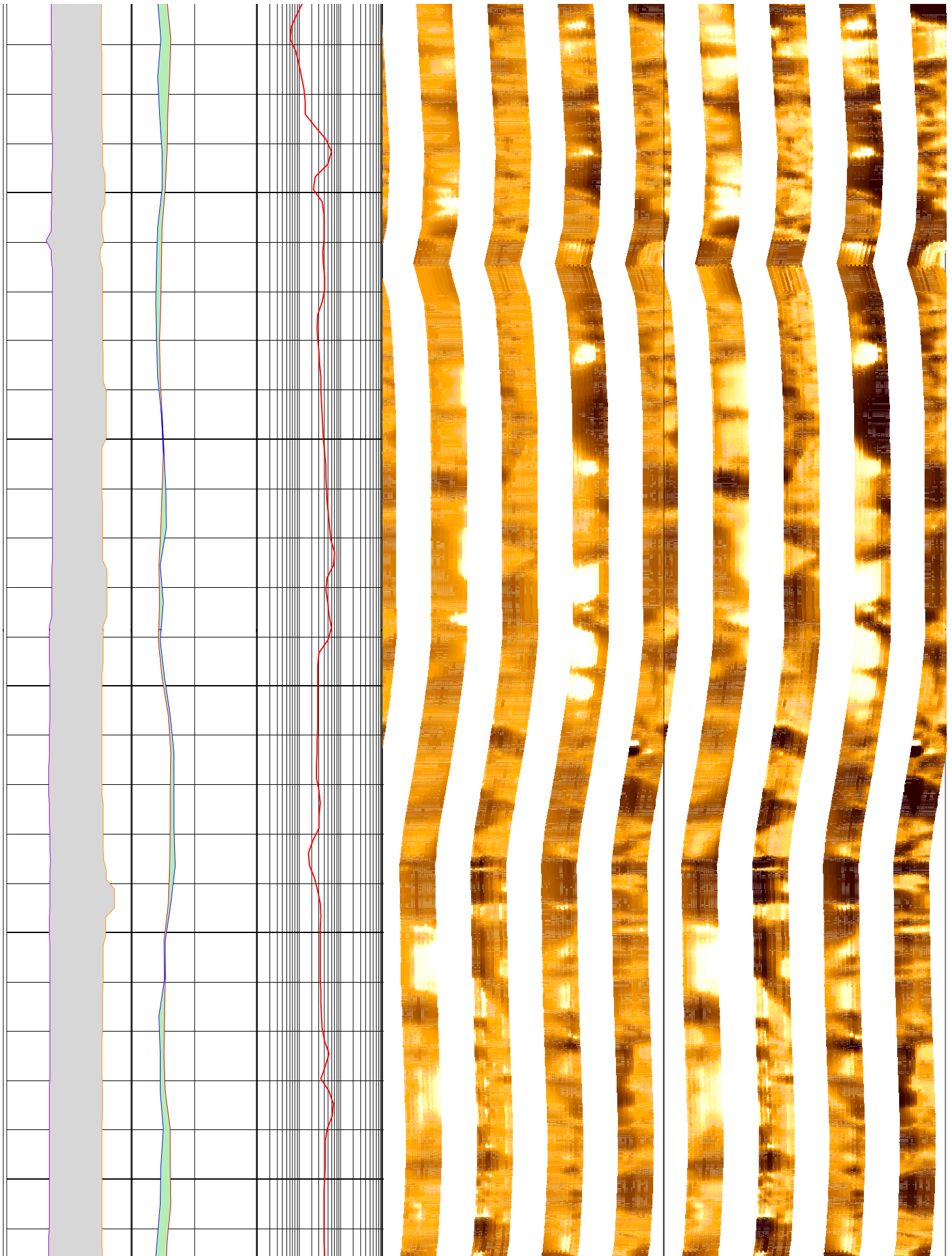
122

124



126

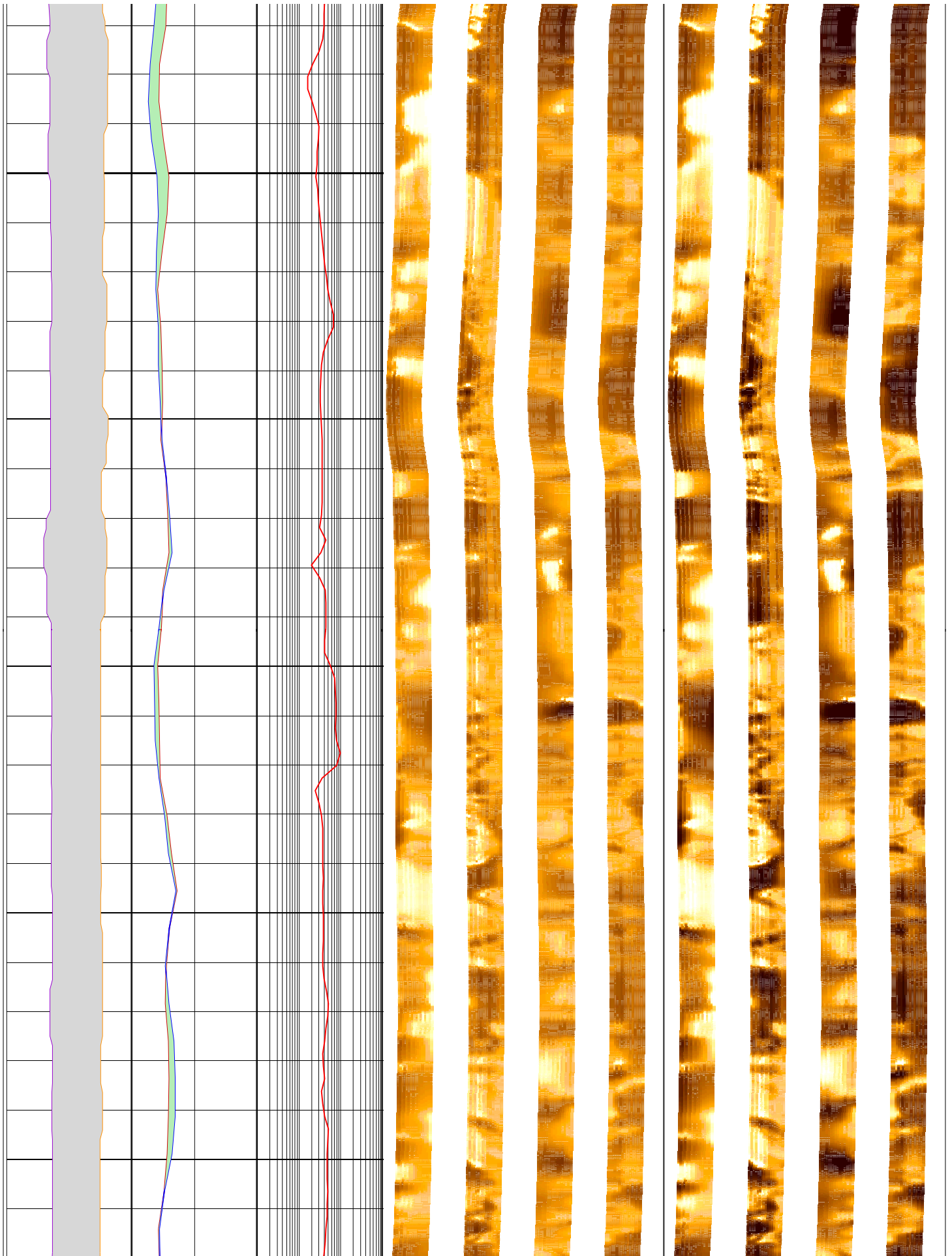
128



130

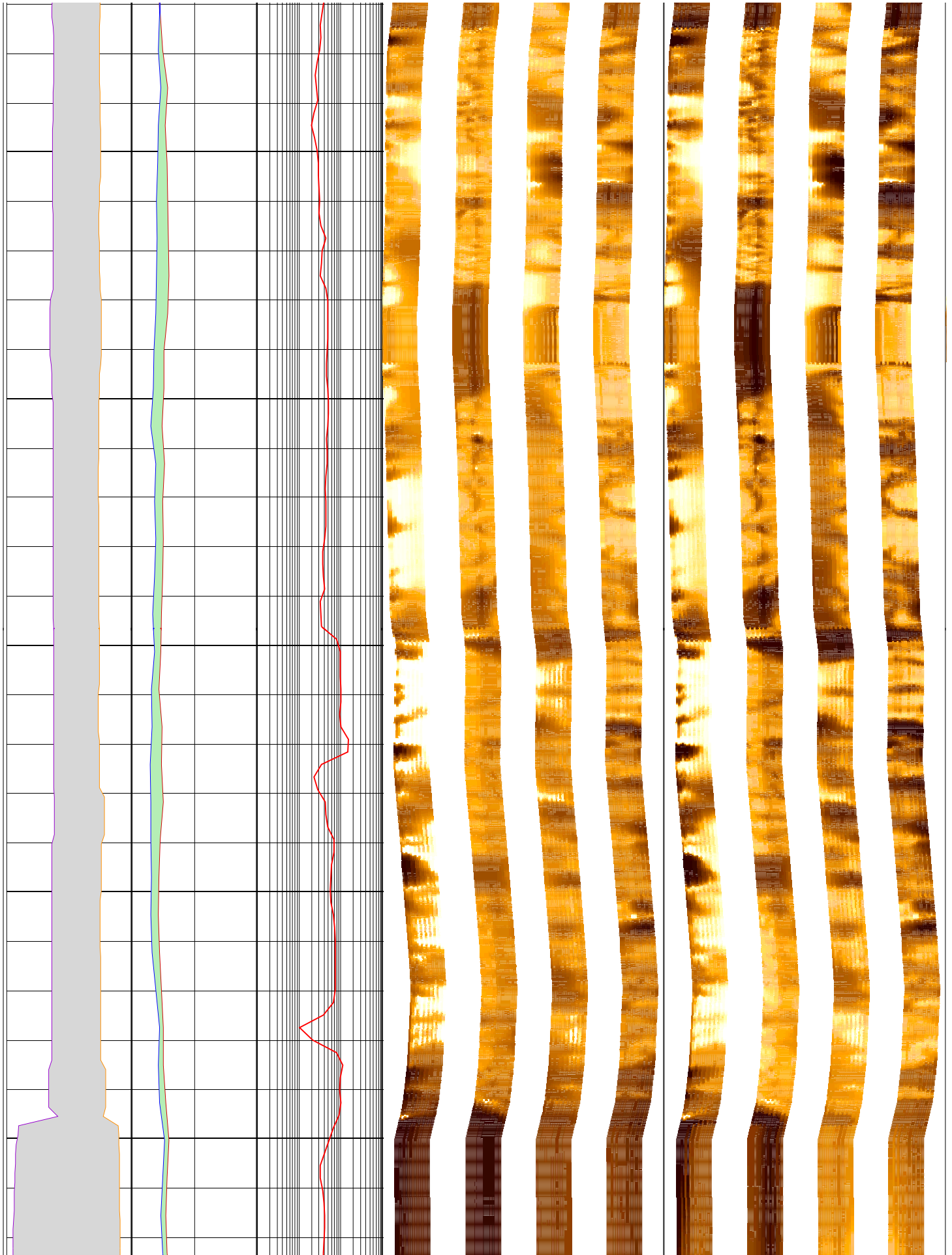
132

134



136

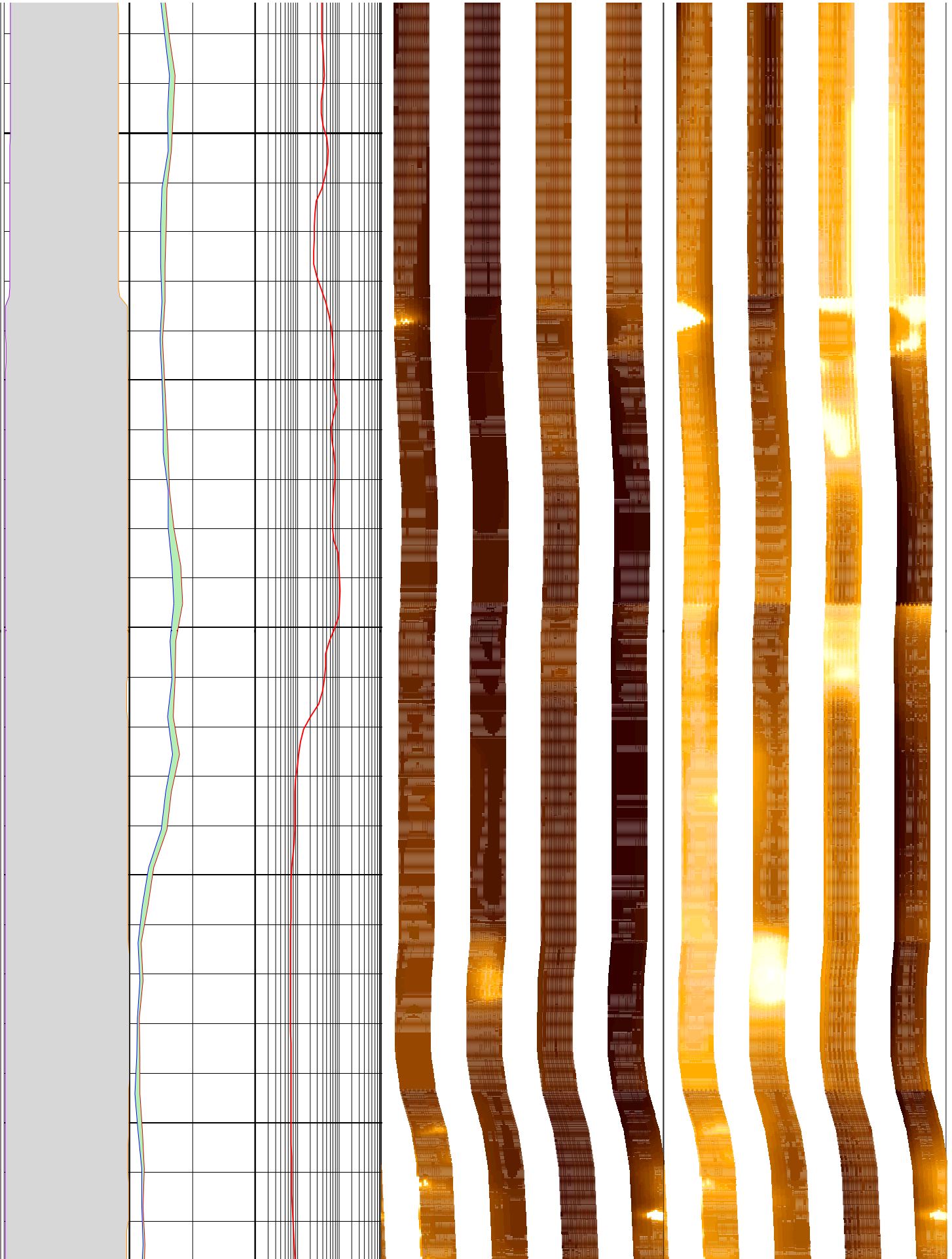
138



140

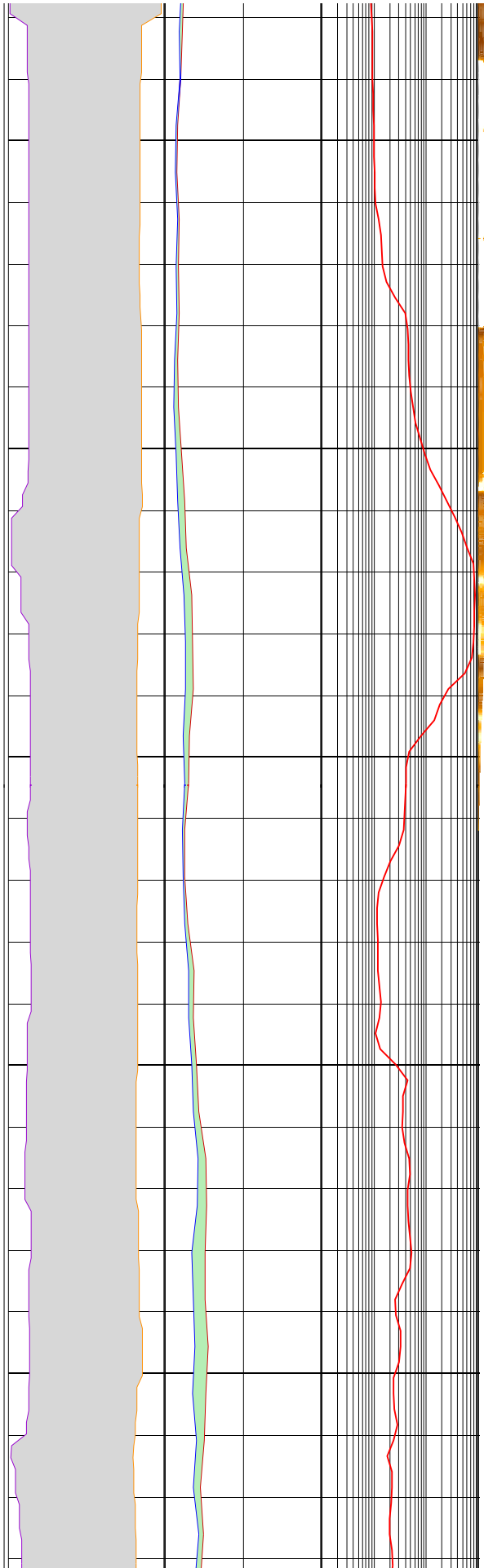
142

144



146

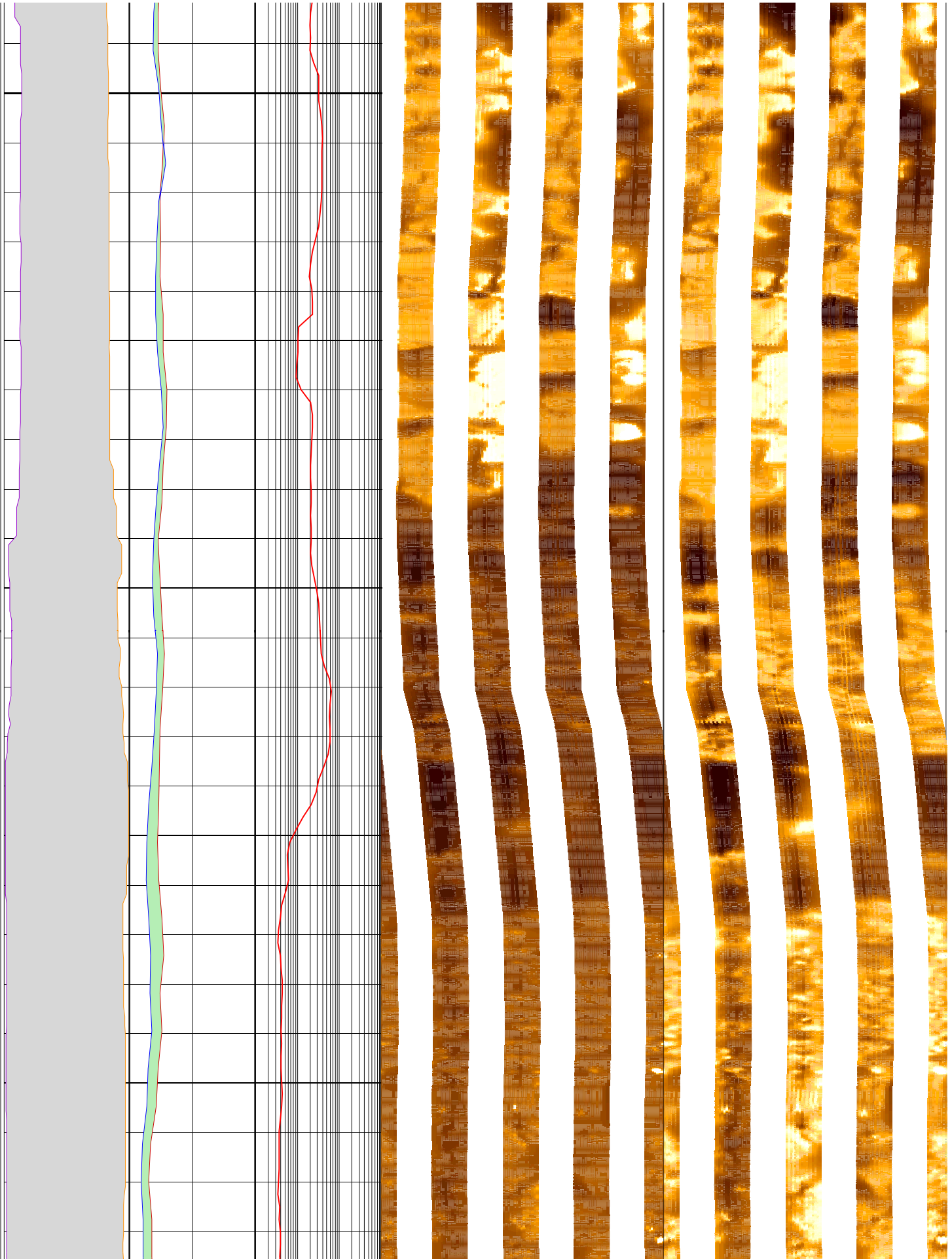
148



150

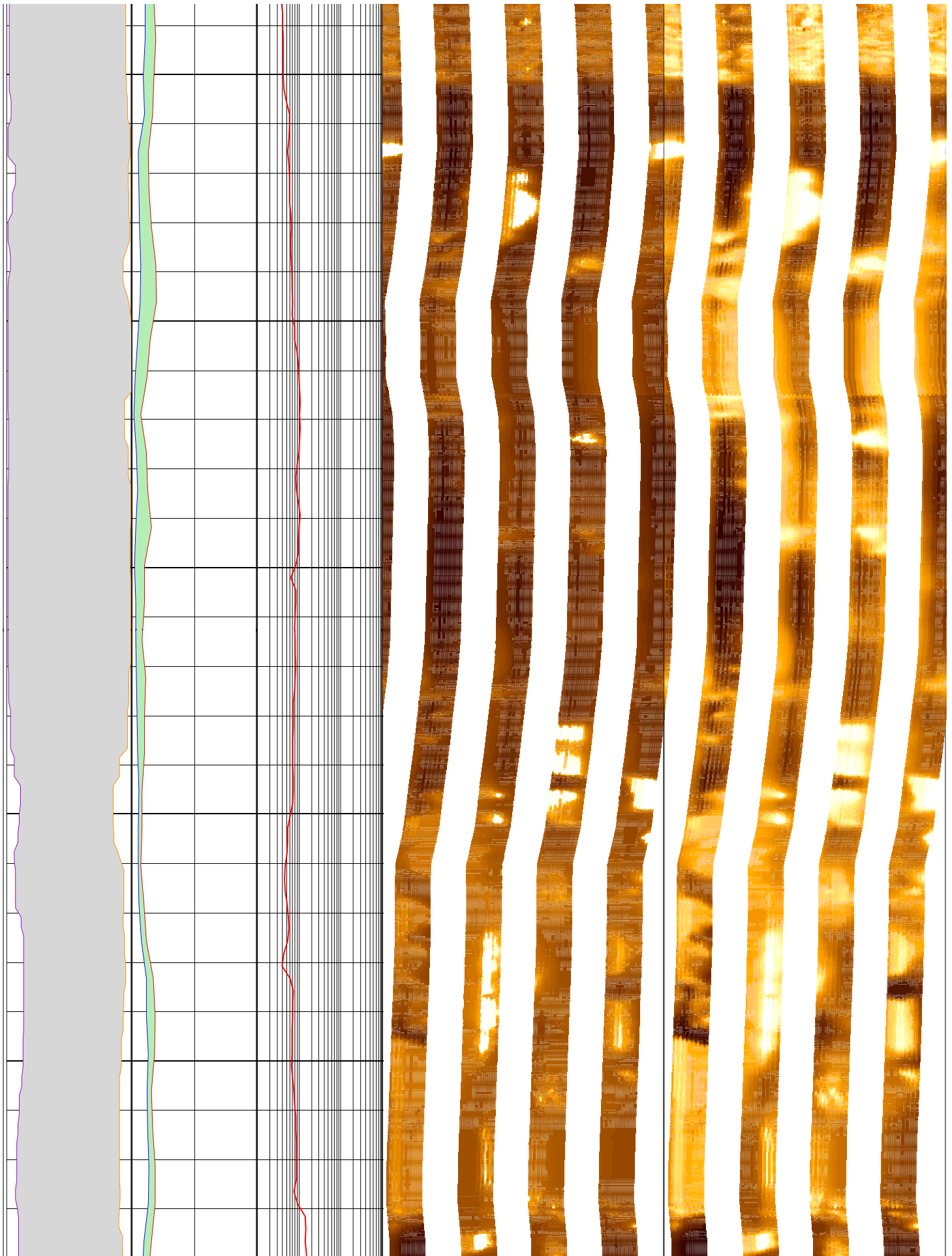
152

154



156

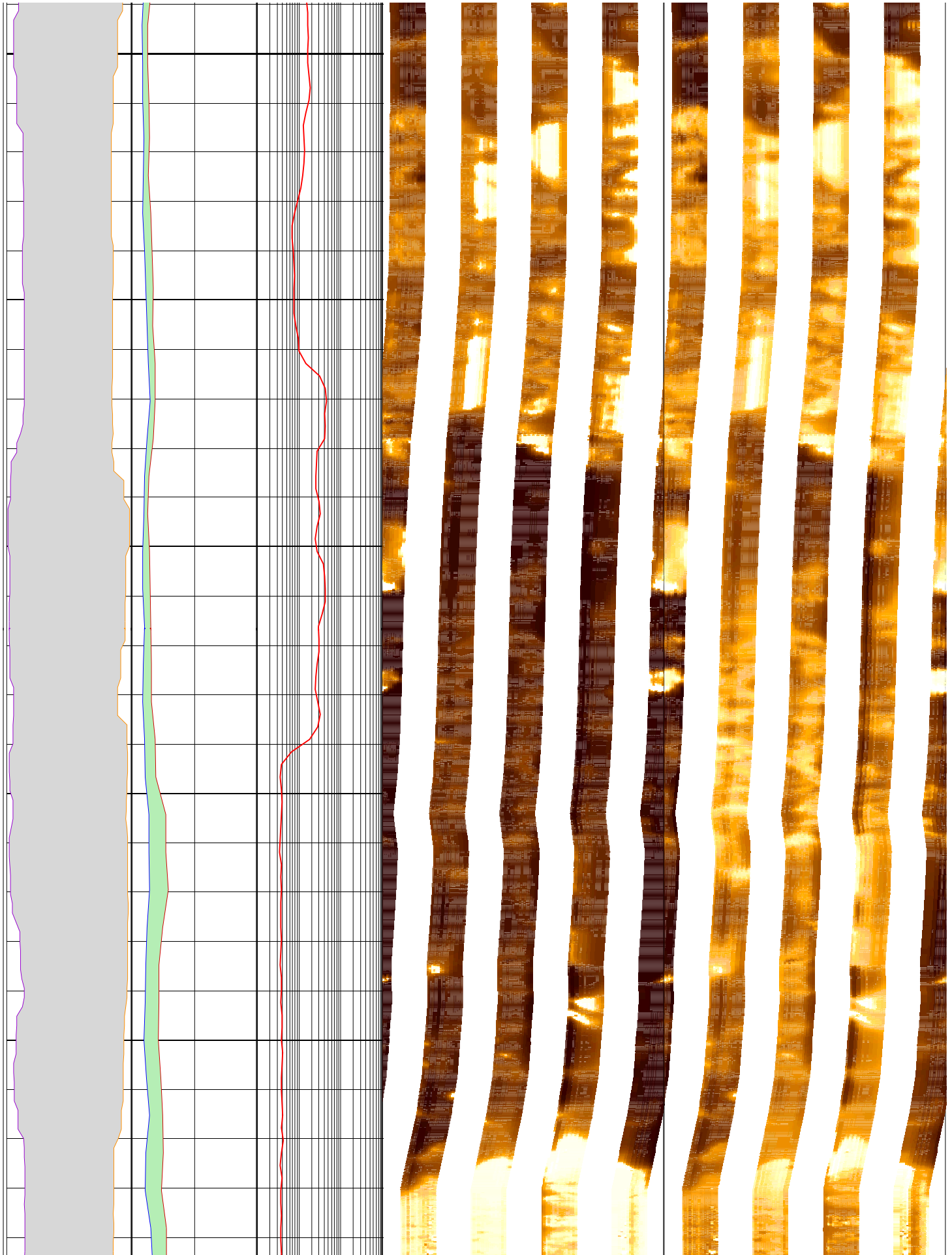
158



160

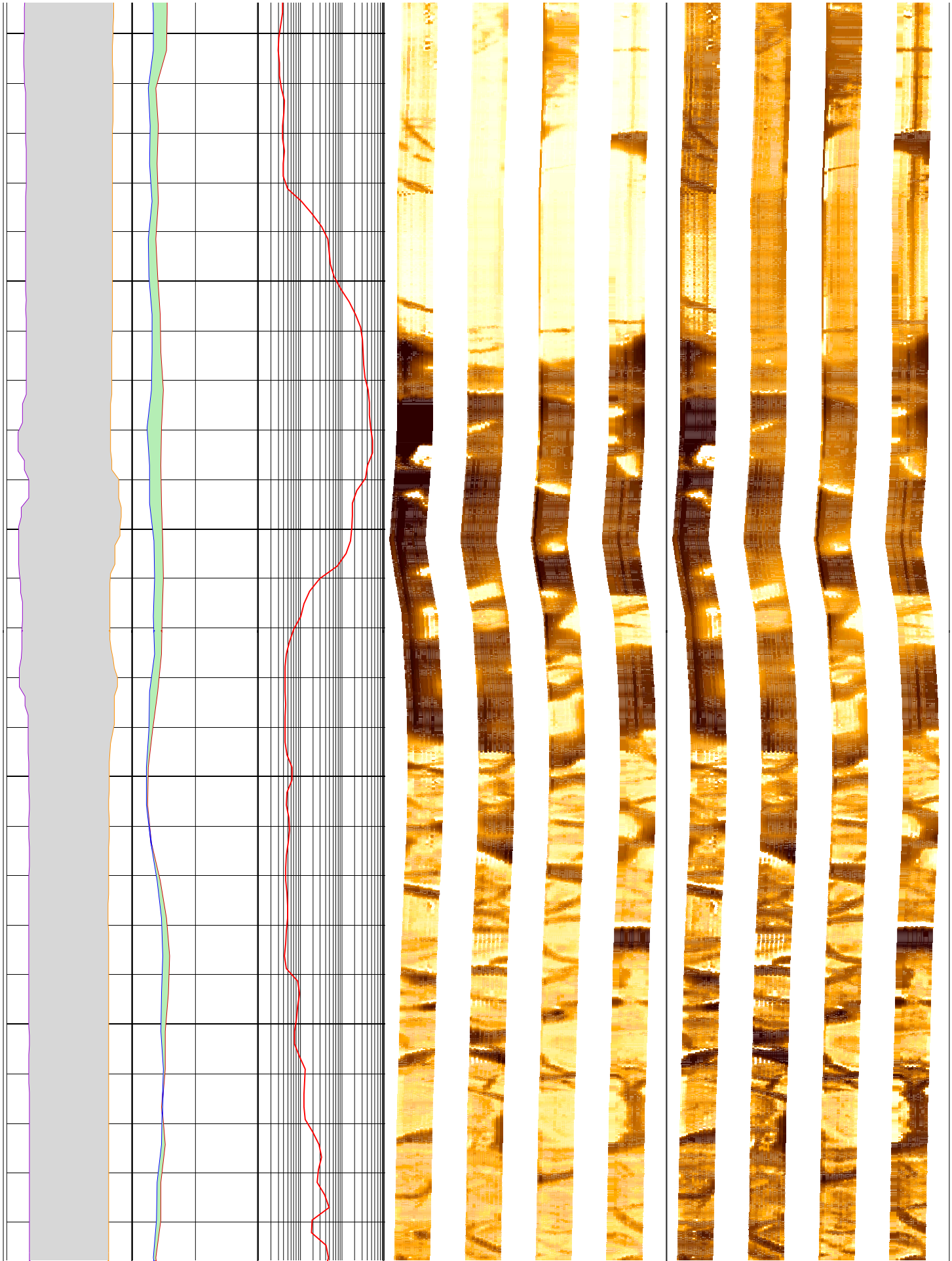
162

164



166

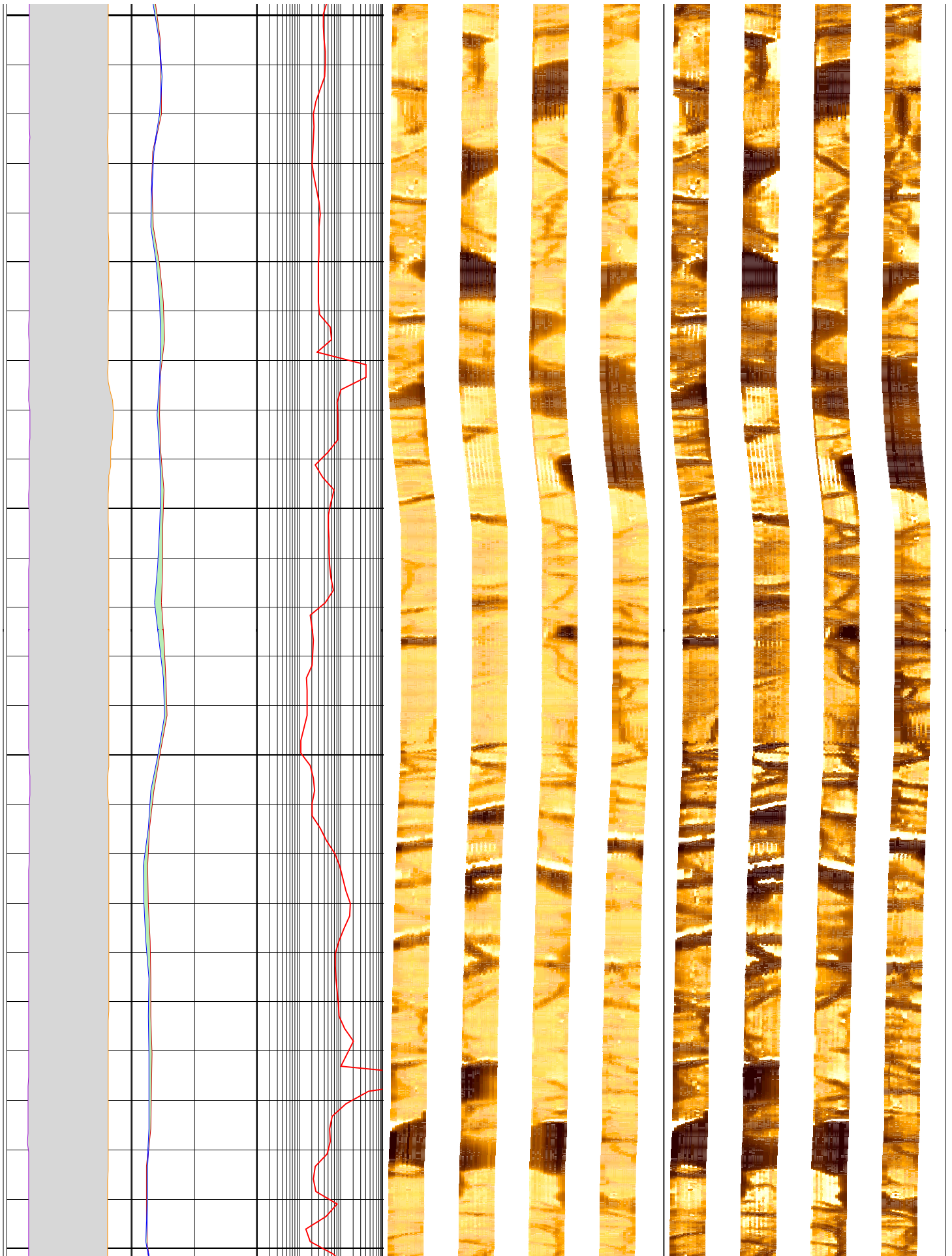
168



170

172

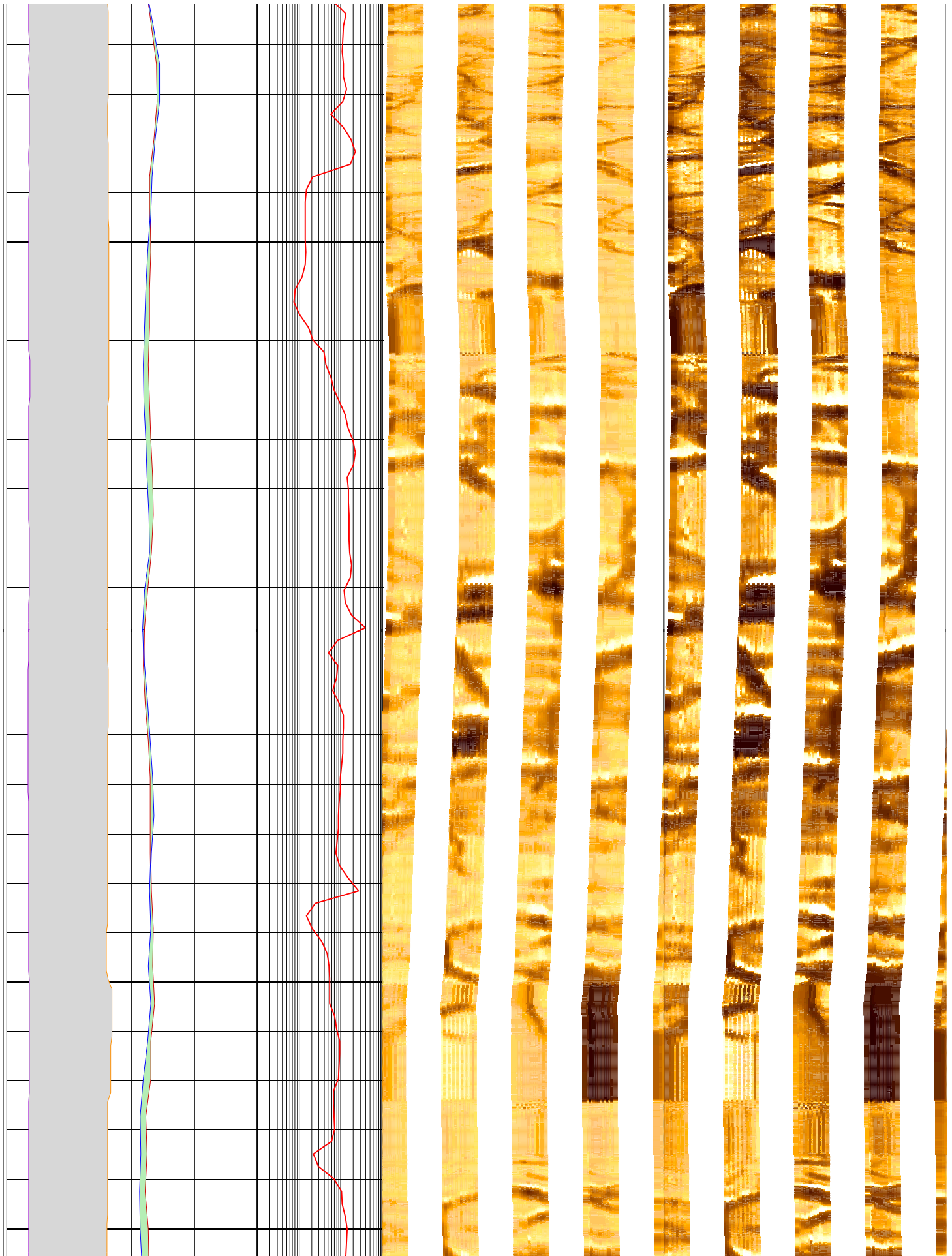
174



176

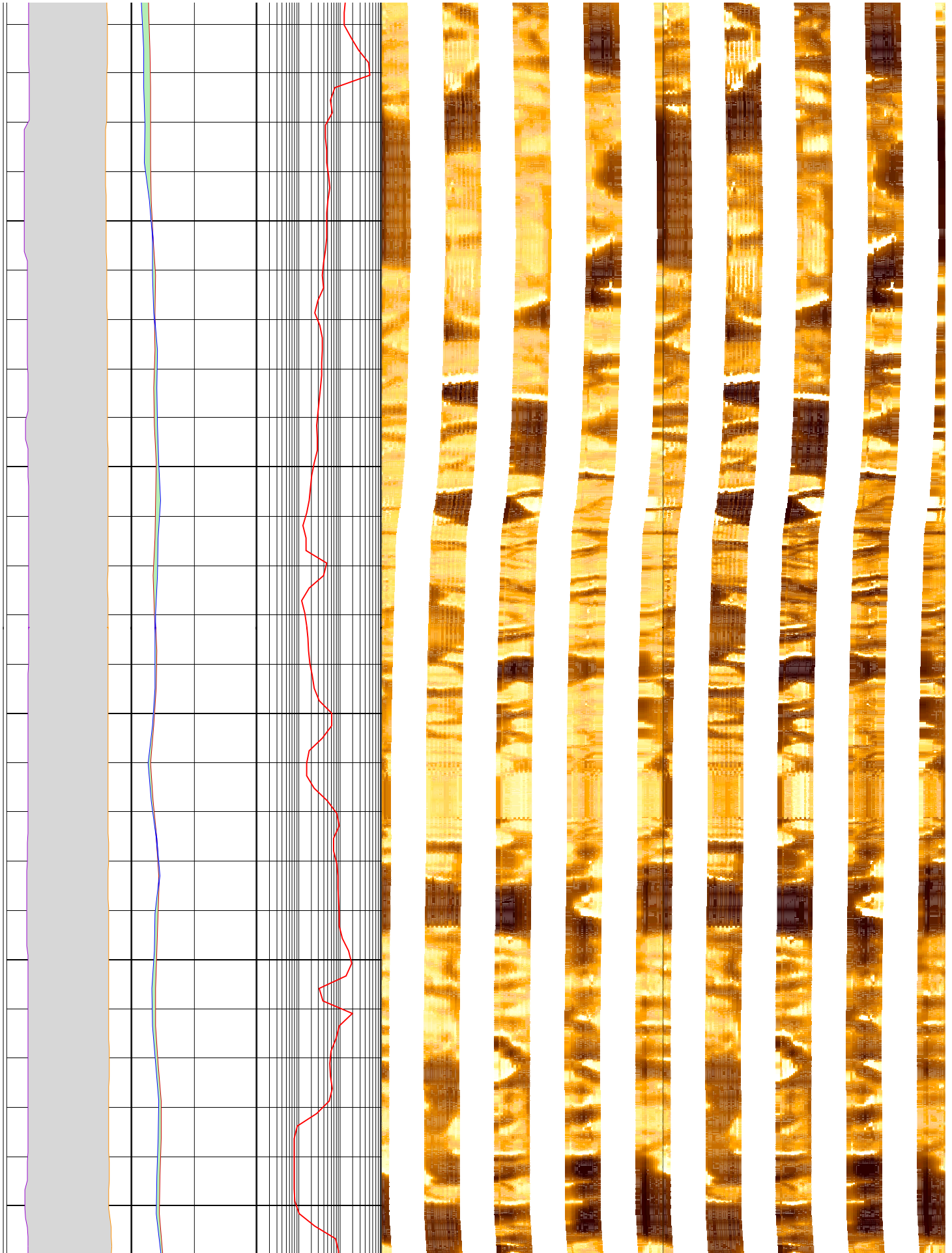
178

180



182

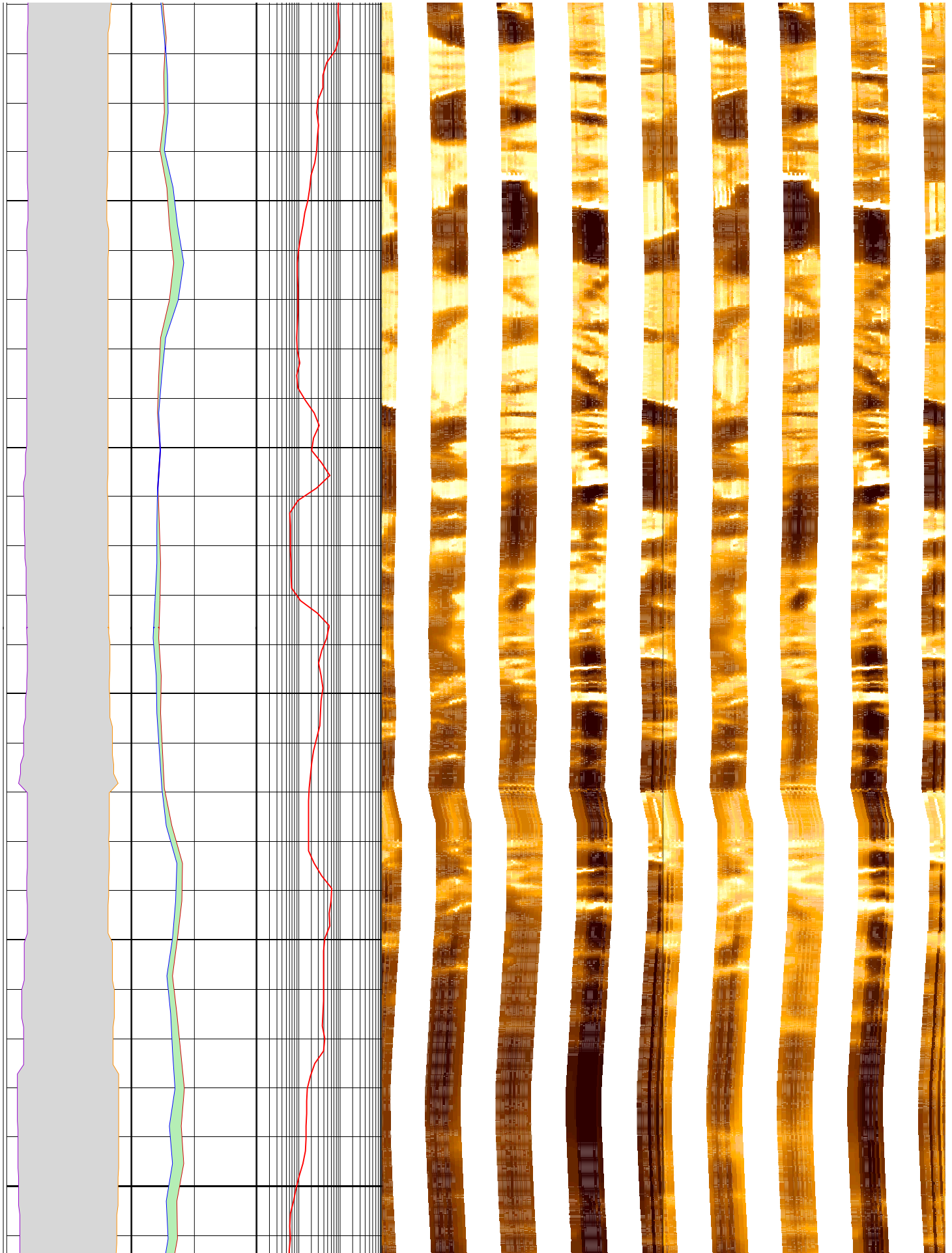
184



186

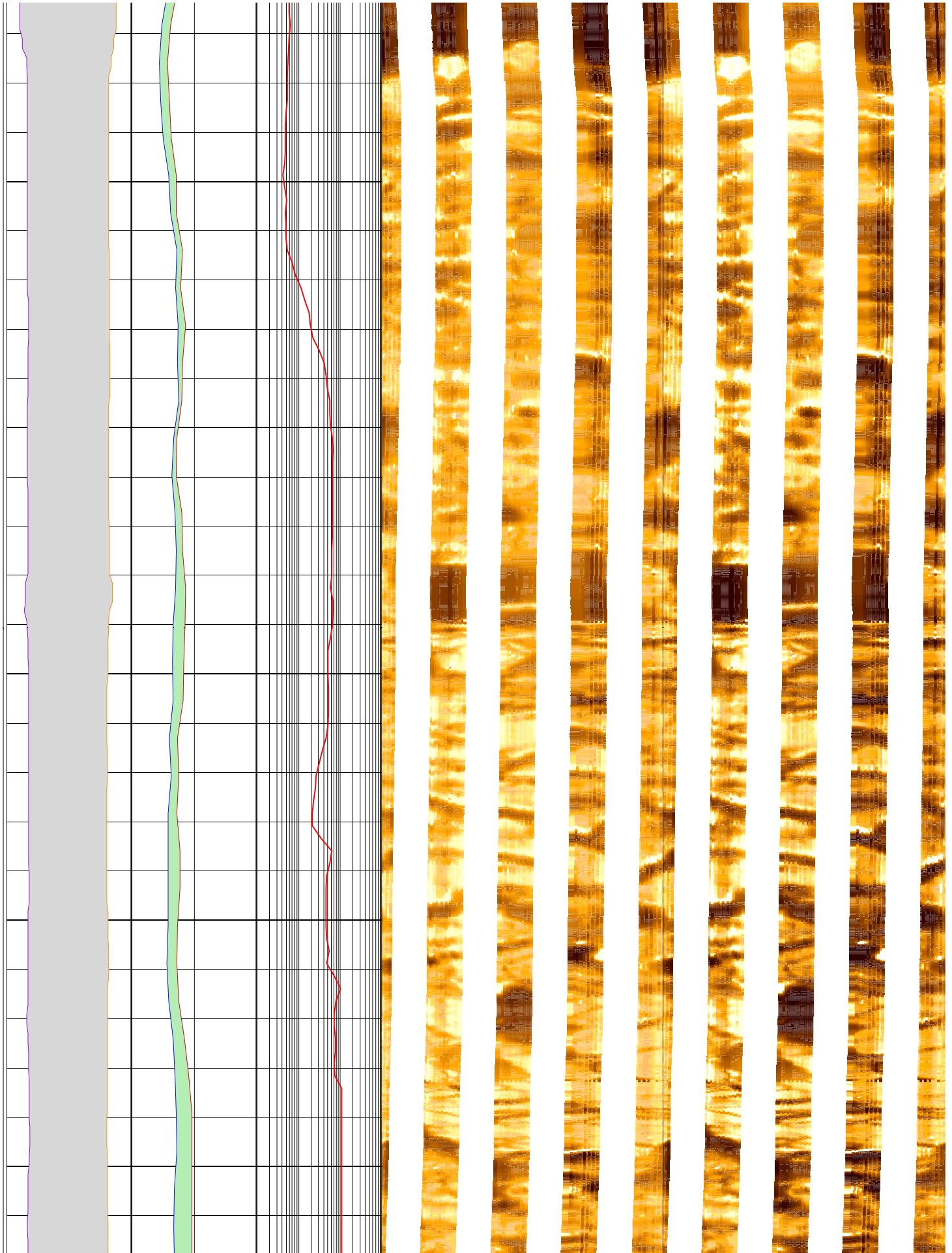
188

190



192

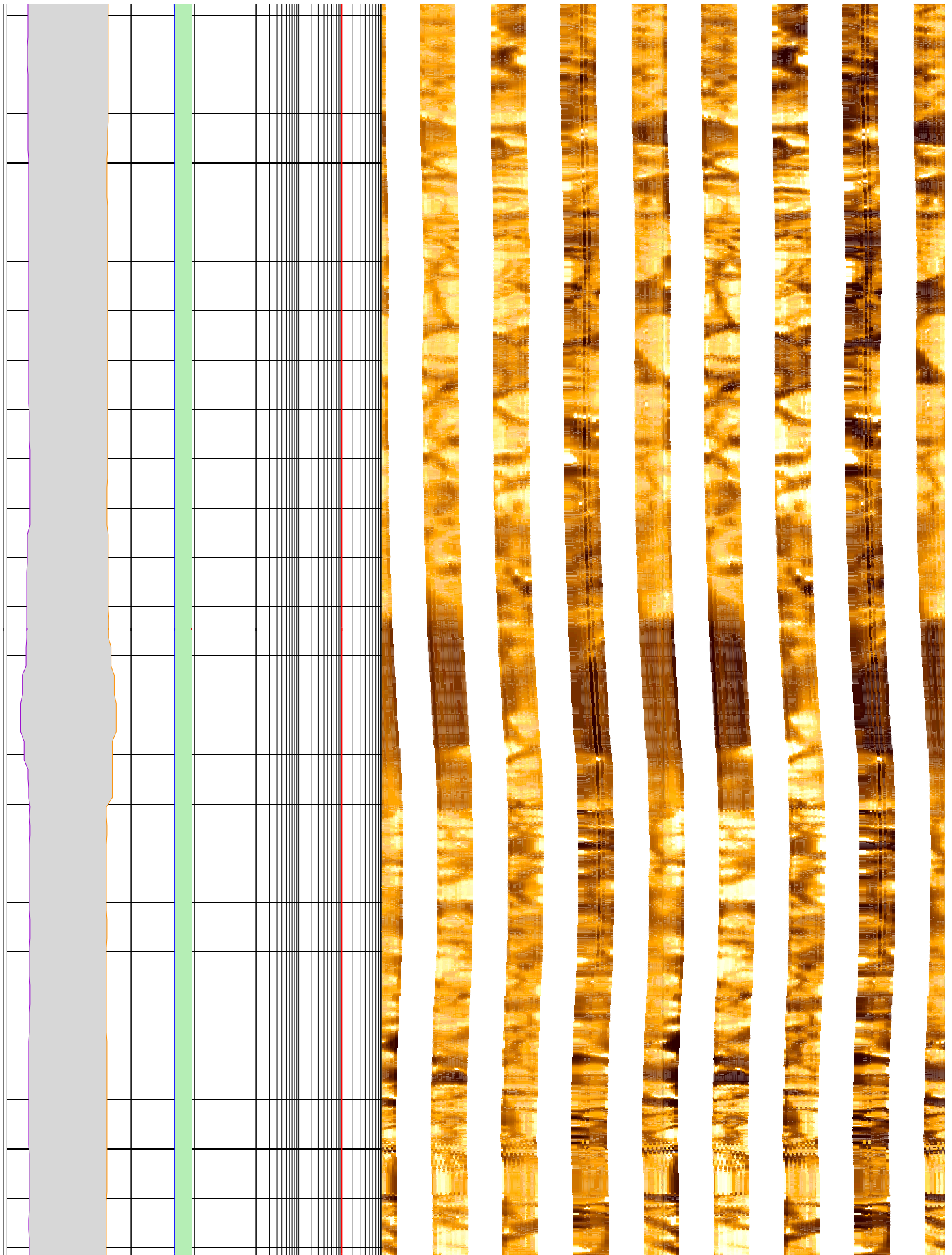
194



196

198

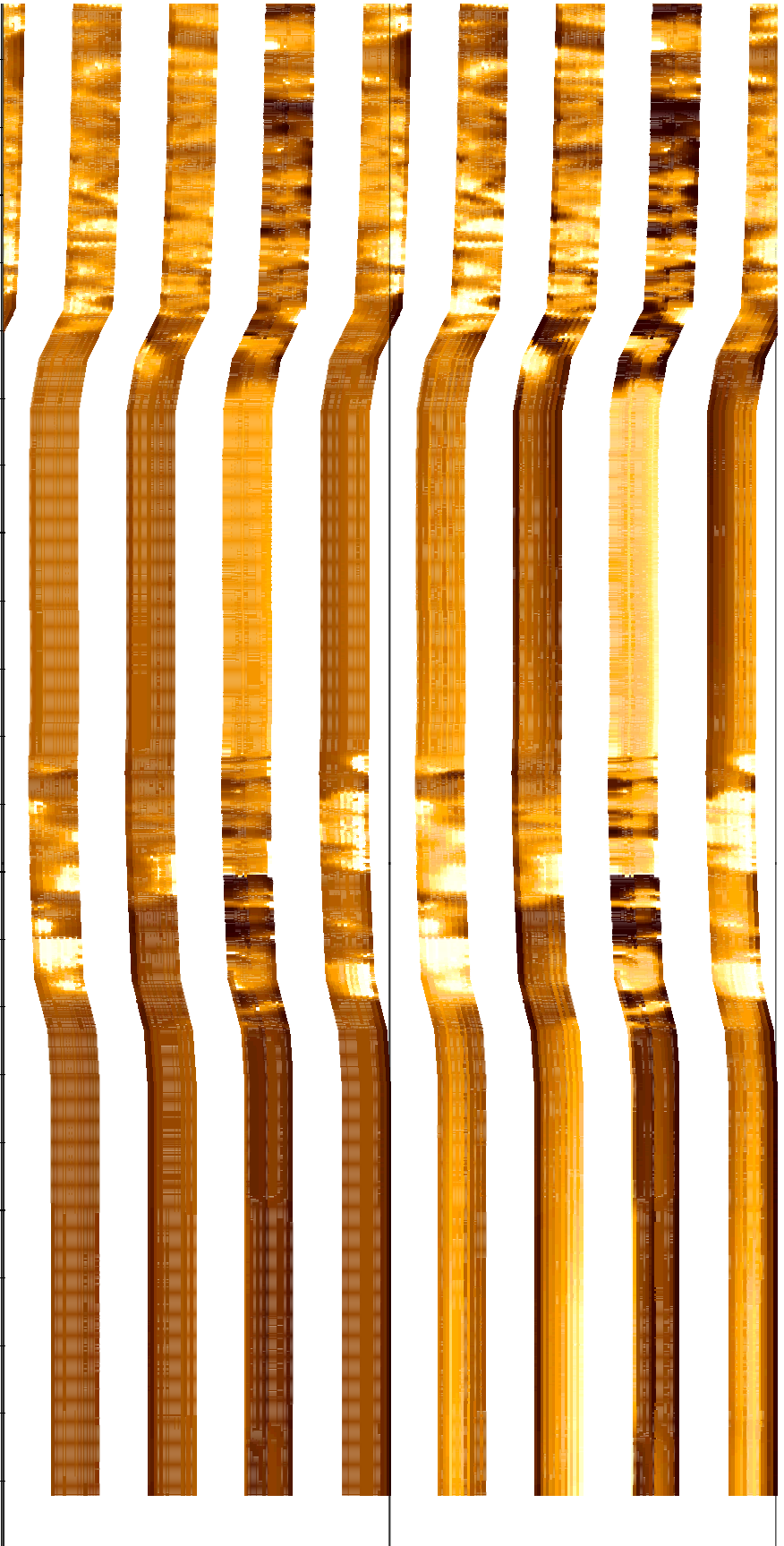
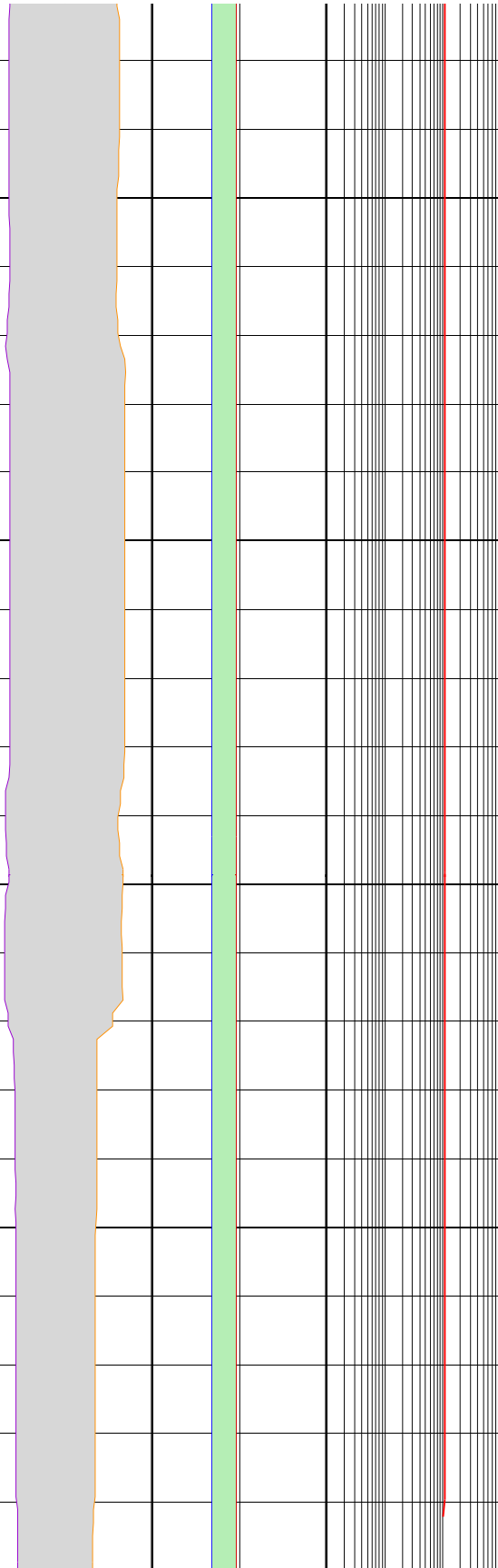
200



202

204

MD
1 : 20
m



FMS Pass 2 Static
Horizontal Scale: 1 : 6.981
Orientation North

FMS Pass 2 Dynamic
Horizontal Scale: 1 : 6.981
Orientation North

0 120 240 360

0 120 240 360

lgp_Area_

lgp_Area_

RT_HRLT.H
1 (ohm.m)¹⁰⁰⁰

C1 C1@FMS
16 (in) -16

HCGR.FMS_
0 (gAPI) 25

C2 C2@FMS

HSGR.FMS_

Resistive

FMS4 Image

Conductive

Resistive

FMS4 Image

Conductive

-16 (in) 16

0 (gAPI) 25

