

**Company:** Lamont Doherty

**Well:** Expedition 307 Site U1318B

**Field:** Porcupine Basin Carbonate Mounds

**Rig:** Joides Resolution Country: Ireland

**Formation Micro-Scanner**

**Gamma Ray**

Elev.: K.B. 11.3 m  
G.L. -419 m  
D.F. 11 m

Permanent Datum: Mean Sea Level  
Log Measured From: Drill Floor  
Drilling Measured From: Drill Floor

Elev.: 0 m  
11.0 m above Perm. Datum

**Rig:** Joides Resolution  
**Field:** Porcupine Basin Carbonate Mounds  
**Location:**  
**Well:** Expedition 307 Site U1318B  
**Company:** Lamont Doherty

Ocean Atlantic	Max. Well Deviation	Longitude	Latitude
		11° 33.0198'W	51° 26.1498'N

**Logging Date** 10-May-2005

**Run Number** three

**Depth Driller** 664 m

**Schlumberger Depth** 664 m

**Bottom Log Interval** 664 m

**Top Log Interval** 419 m

**Casing Driller Size @ Depth** 0.000 in @ 490 m

**Casing Schlumberger** 490 m

**Bit Size** 11.438 in

**Type Fluid In Hole** Sepiolite

**Density** 1.07 g/cm3

**Fluid Loss** PH

**Source Of Sample**

**RM @ Measured Temperature** 0.322 ohm.m @ 22 degC

**RMF @ Measured Temperature** @ @

**RMC @ Measured Temperature** @ @

**Source RMF** RMC

**RM @ MRT** RMF @ MRT @ @

**Maximum Recorded Temperatures**

**Circulation Stopped** 10-May-2005 9:00

**Logger On Bottom** 10-May-2005 17:55

**Unit Number** 2082 **Location** Webster, TX

**Recorded By** Javier Espinosa

**Witnessed By** Philippe Galliot

**Logging Date**

**Run Number**

**Depth Driller**

**Schlumberger Depth**

**Bottom Log Interval**

**Top Log Interval**

**Casing Driller Size @ Depth**

**Casing Schlumberger**

**Bit Size**

**Type Fluid In Hole**

**Density**

**Fluid Loss** PH

**Source Of Sample**

**RM @ Measured Temperature**

**RMF @ Measured Temperature**

**RMC @ Measured Temperature**

**Source RMF** RMC

**RM @ MRT** RMF @ MRT

**Maximum Recorded Temperatures**

**Circulation Stopped**

**Logger On Bottom**

**Unit Number** **Location**

**Recorded By**

**Witnessed By**

Run 1

Run 2

Run



DISCLAIMER

THE USE OF AND RELIANCE UPON THIS RECORDED-DATA BY THE HEREIN NAMED COMPANY (AND ANY OF ITS AFFILIATES, PARTNERS, REPRESENTATIVES, AGENTS, CONSULTANTS AND EMPLOYEES) IS SUBJECT TO THE TERMS AND CONDITIONS AGREED UPON BETWEEN SCHLUMBERGER AND THE COMPANY, INCLUDING: (a) RESTRICTIONS ON USE OF THE RECORDED-DATA; (b) DISCLAIMERS AND WAIVERS OF WARRANTIES AND REPRESENTATIONS REGARDING COMPANY'S USE OF AND RELIANCE UPON THE RECORDED-DATA; AND (c) CUSTOMER'S FULL AND SOLE RESPONSIBILITY FOR ANY INFERENCE DRAWN OR DECISION MADE IN CONNECTION WITH THE USE OF THIS RECORDED-DATA.


OTHER SERVICES1 OS1: TCOM OS2: DSI OS3: OS4: OS5:	OTHER SERVICES2 OS1: OS2: OS3: OS4: OS5:
--	---

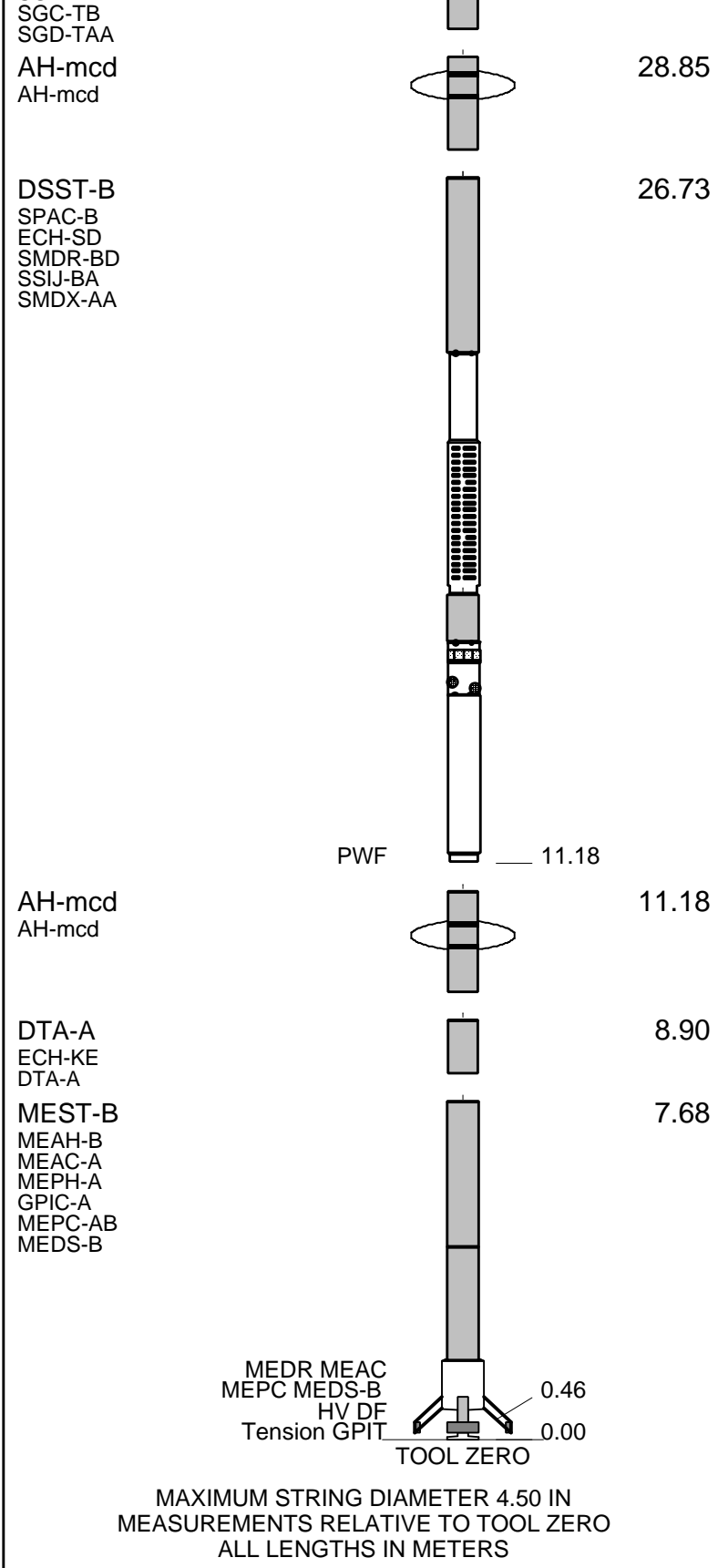
REMARKS: RUN NUMBER 1 Parameters and Presentations as per IODP standards Tool ran as per tool sketch below Hole drilled with APC/XCB Hole flushed with Sepiolite.	REMARKS: RUN NUMBER 2
---	-----------------------

RUN 1			RUN 2		
SERVICE ORDER #: PROGRAM VERSION: 12C0-301 FLUID LEVEL:			SERVICE ORDER #: PROGRAM VERSION: FLUID LEVEL:		
LOGGED INTERVAL	START	STOP	LOGGED INTERVAL	START	STOP

EQUIPMENT DESCRIPTION

RUN 1		RUN 2	
SURFACE EQUIPMENT			
GSR-U/Y WITM (DTS)-A			

DOWNHOLE EQUIPMENT			
LEH-QT		32.33	
LEH-QT			
DTC-H	CTEM	31.16	31.44
ECH-KC	TelStatus ToolStatu	30.52	
SGT-N	Gamma Ray	30.25	30.52
SGH-K			



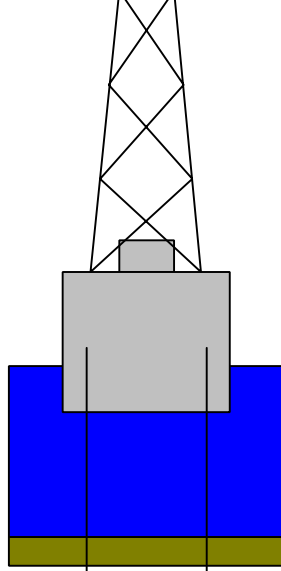
Production String	(in)	(m)	Well Schematic	(m)	(in)	Casing String
	OD	ID		MD	OD	

Kelly Bushing Elevation  
Derrick Floor Elevation

11.3  
11.0

Mean Sea Level

0.0



0.0 5.000

Casing String



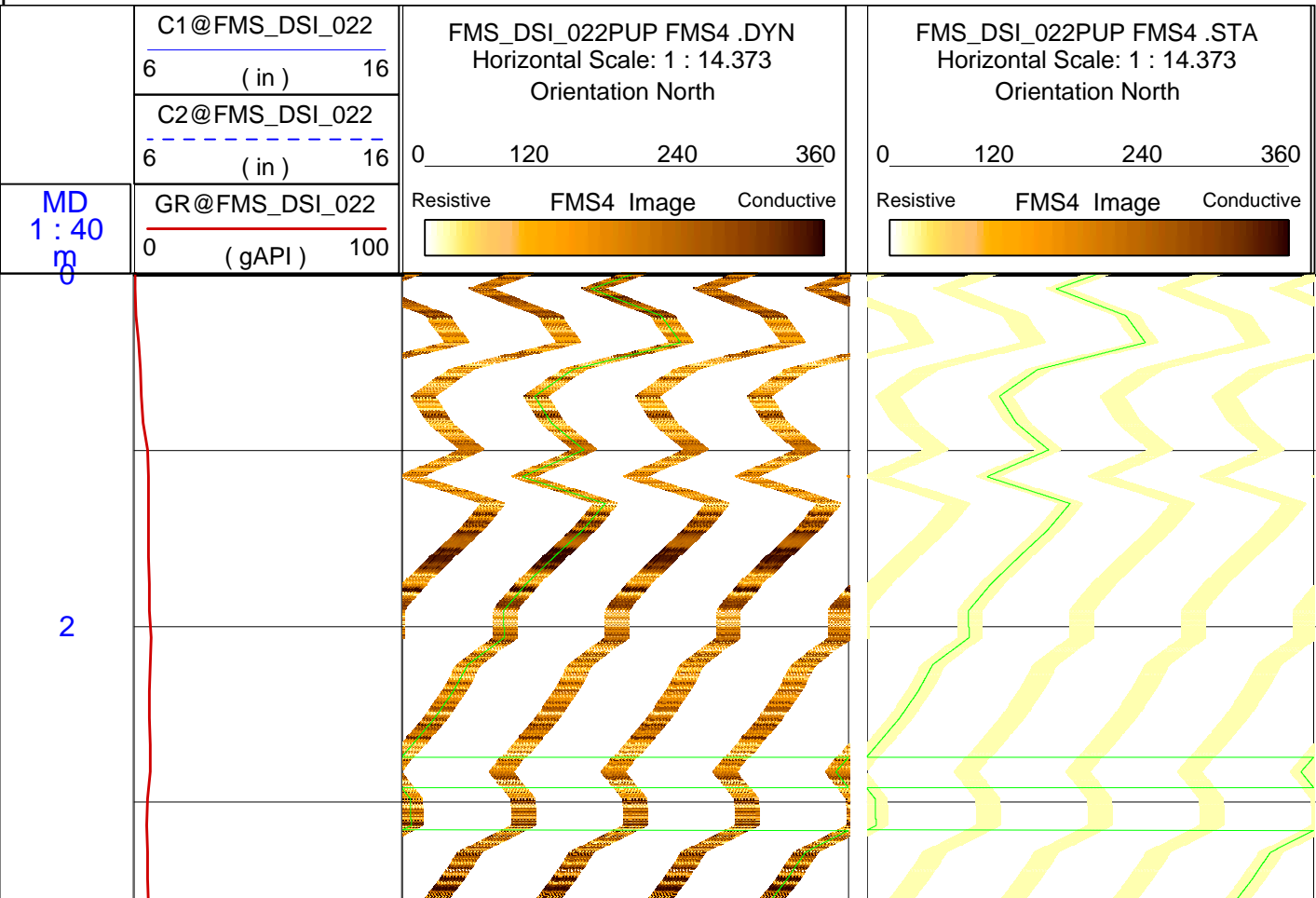
419.0 11.475

Borehole Segment



490.0 5.000

Casing Shoe



4

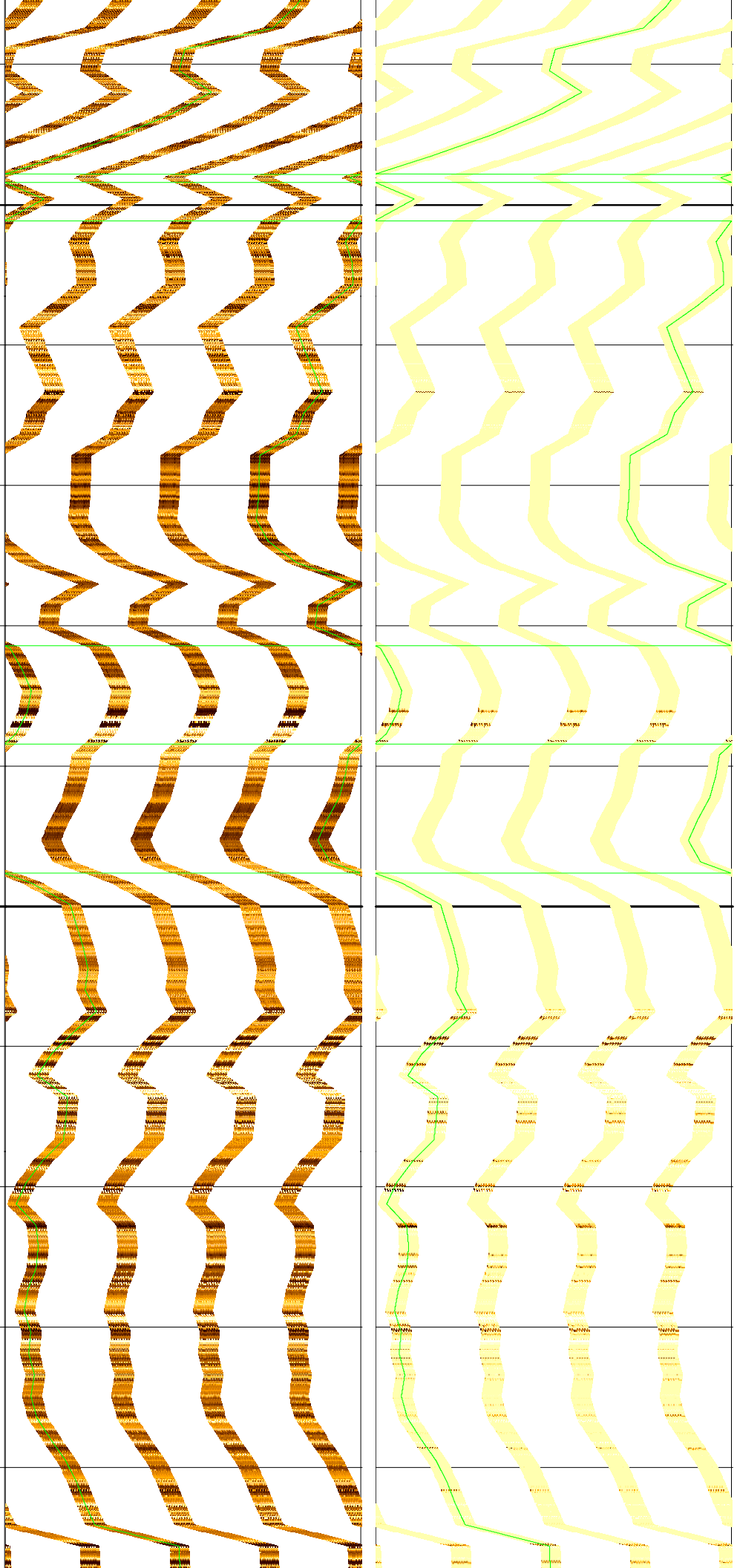
6

8

10

12

14



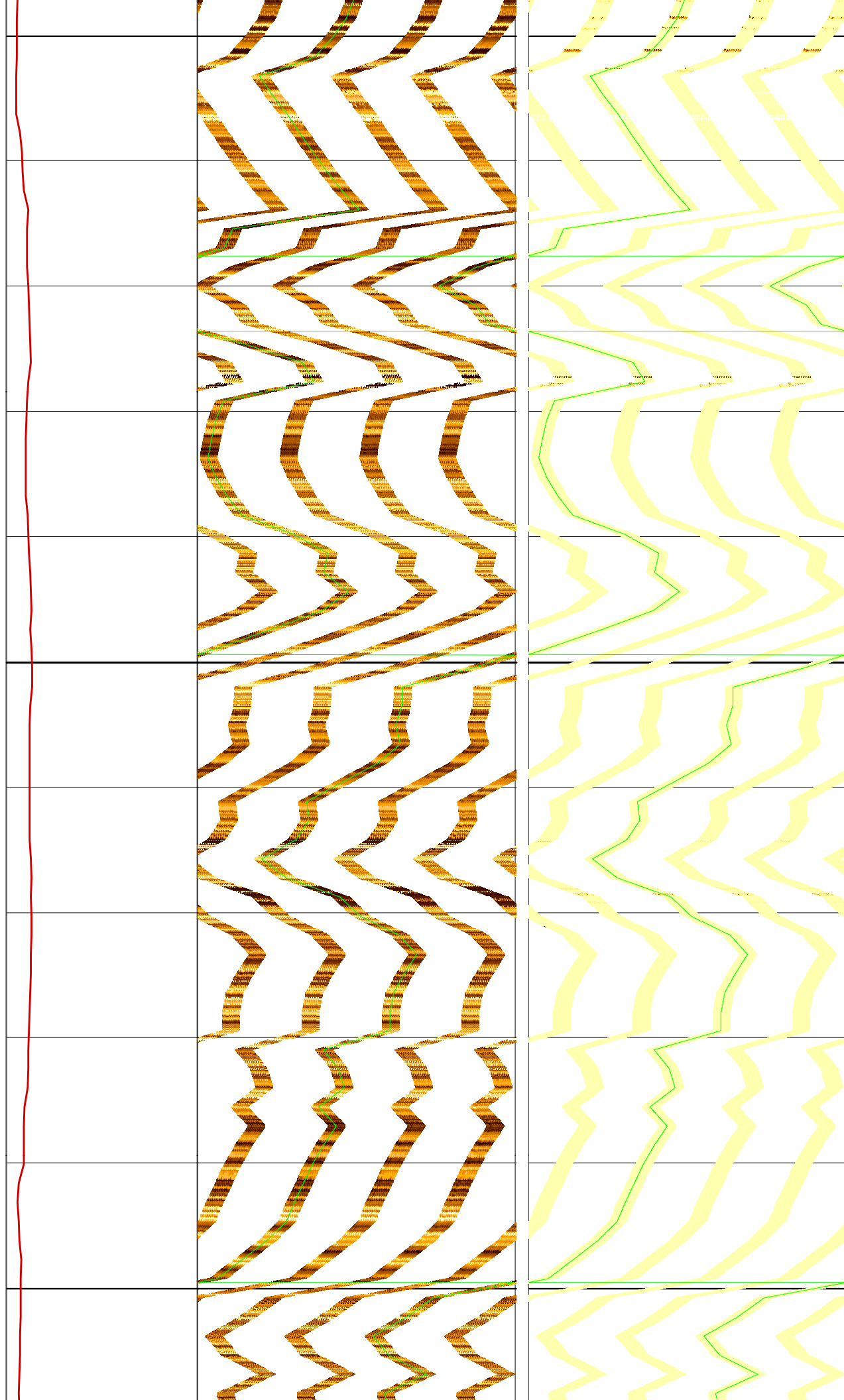
16

18

20

22

24



26

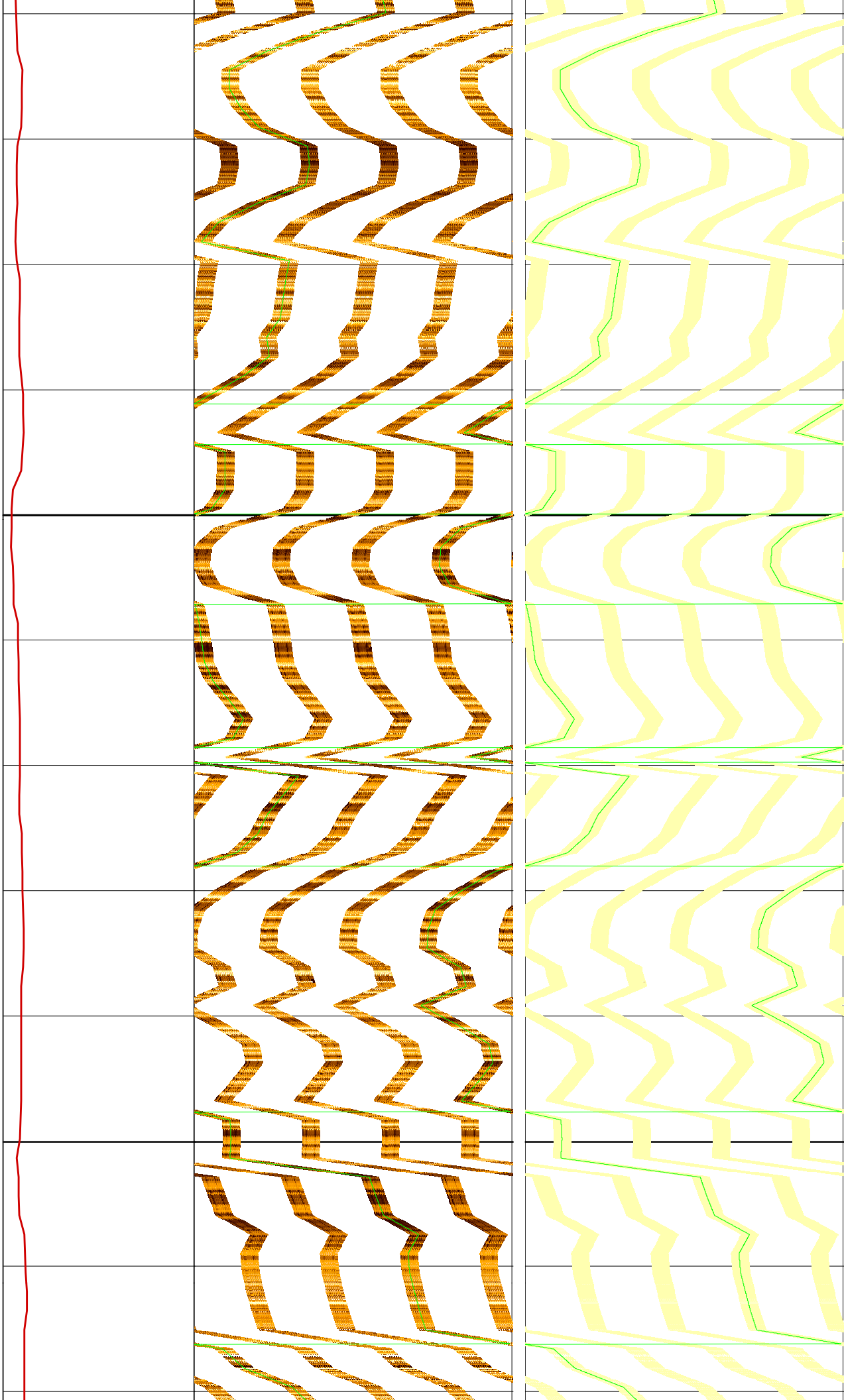
28

30

32

34

36



38

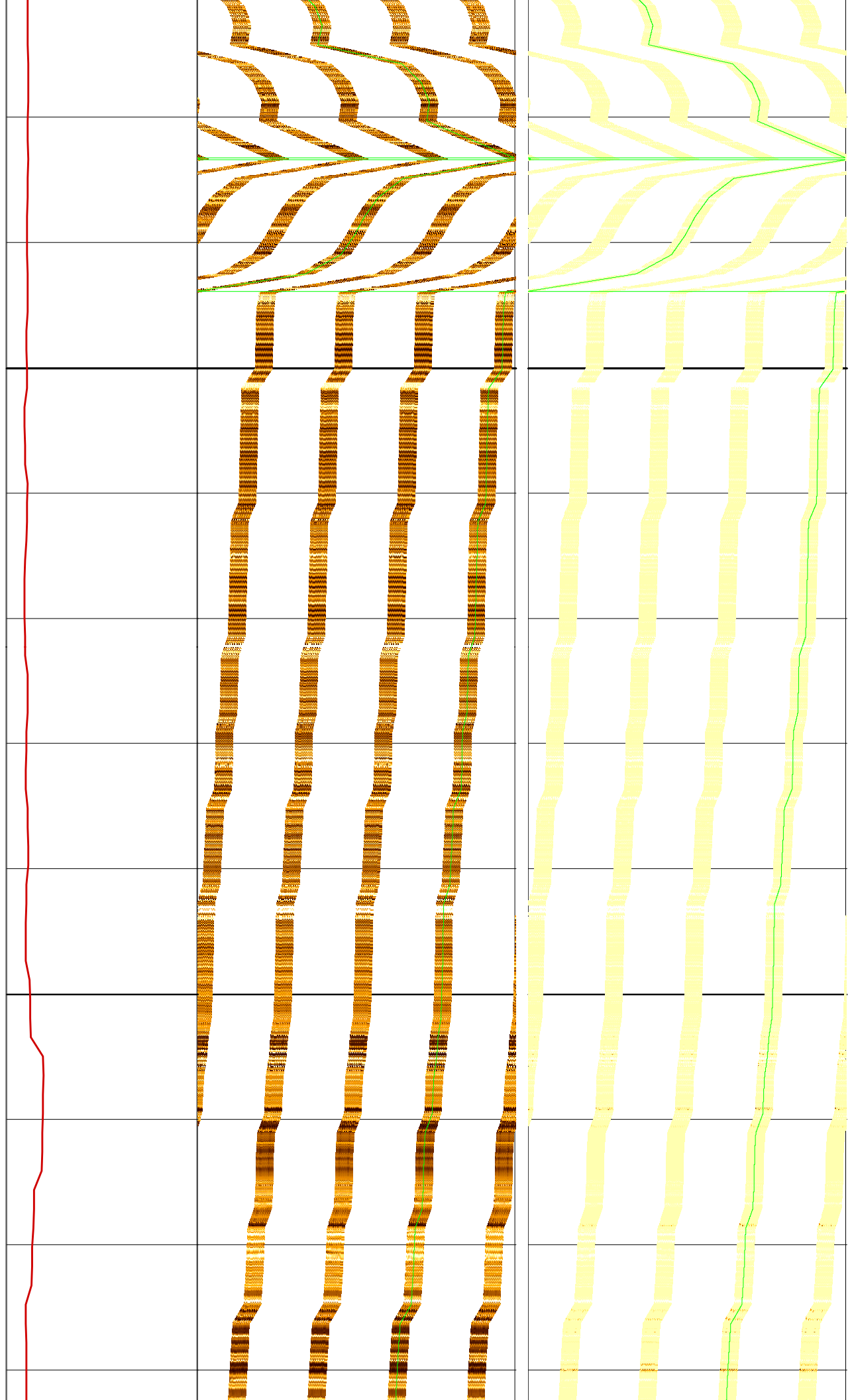
40

42

44

46

48





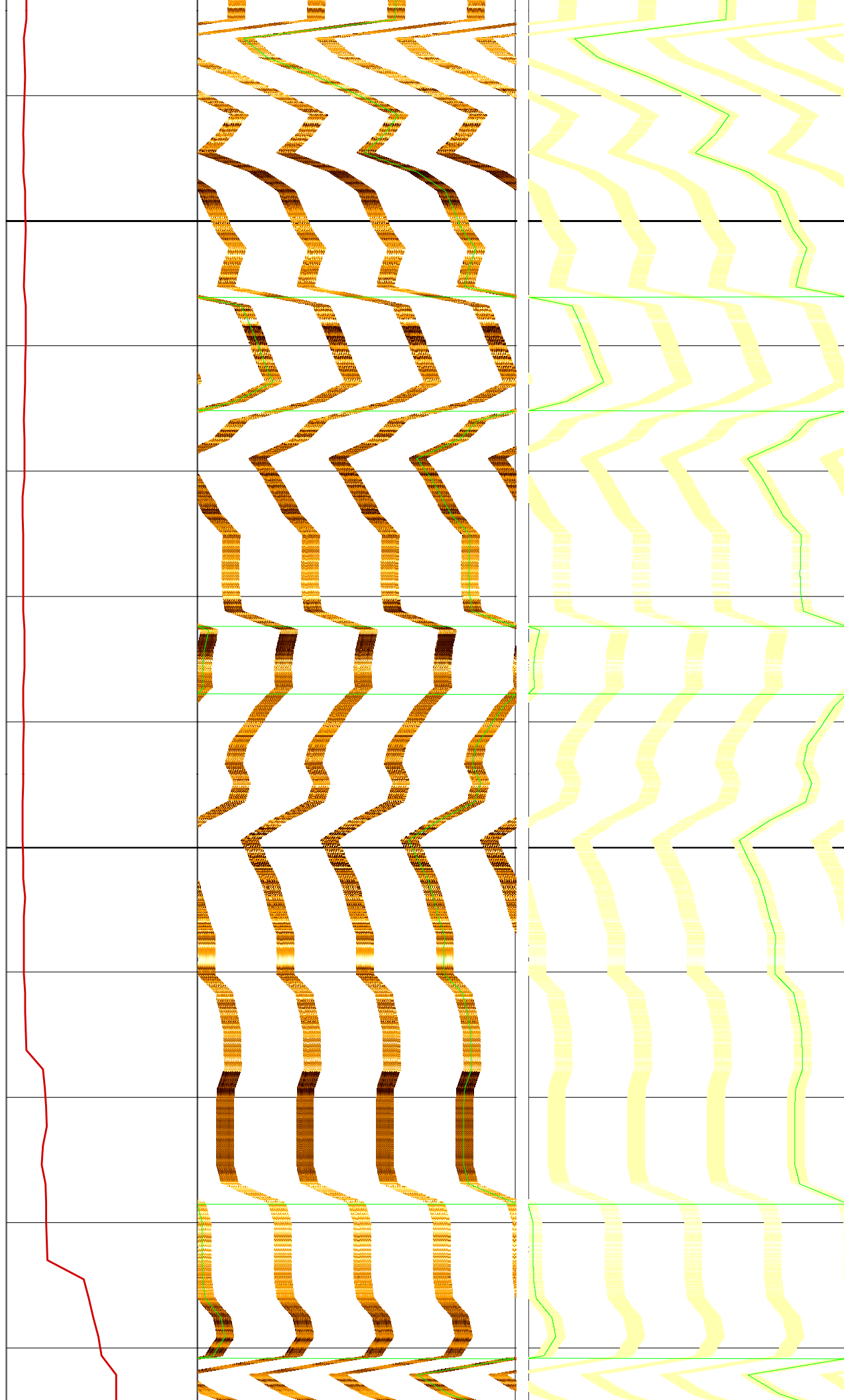
50

52

54

56

58



60

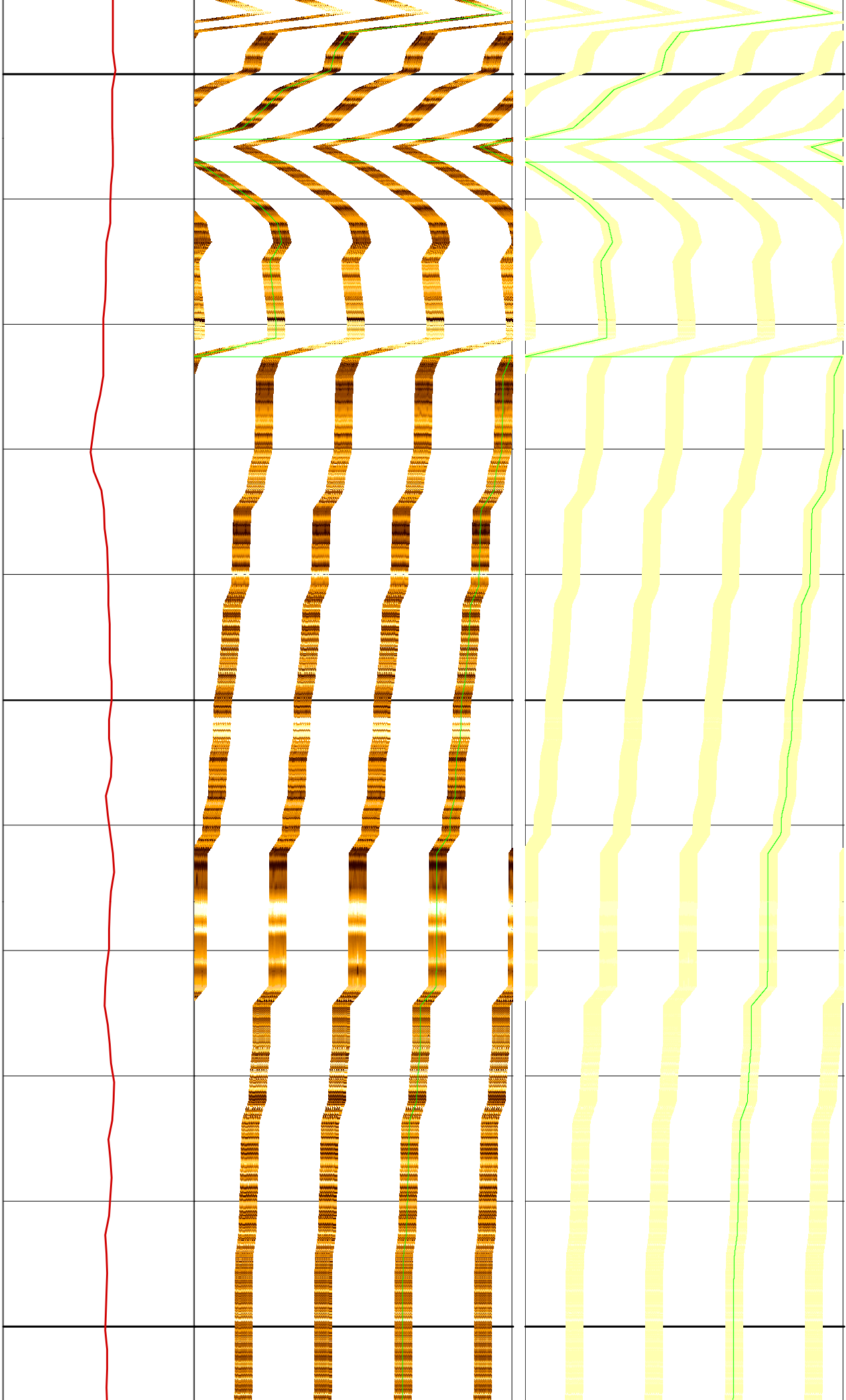
62

64

66

68

70



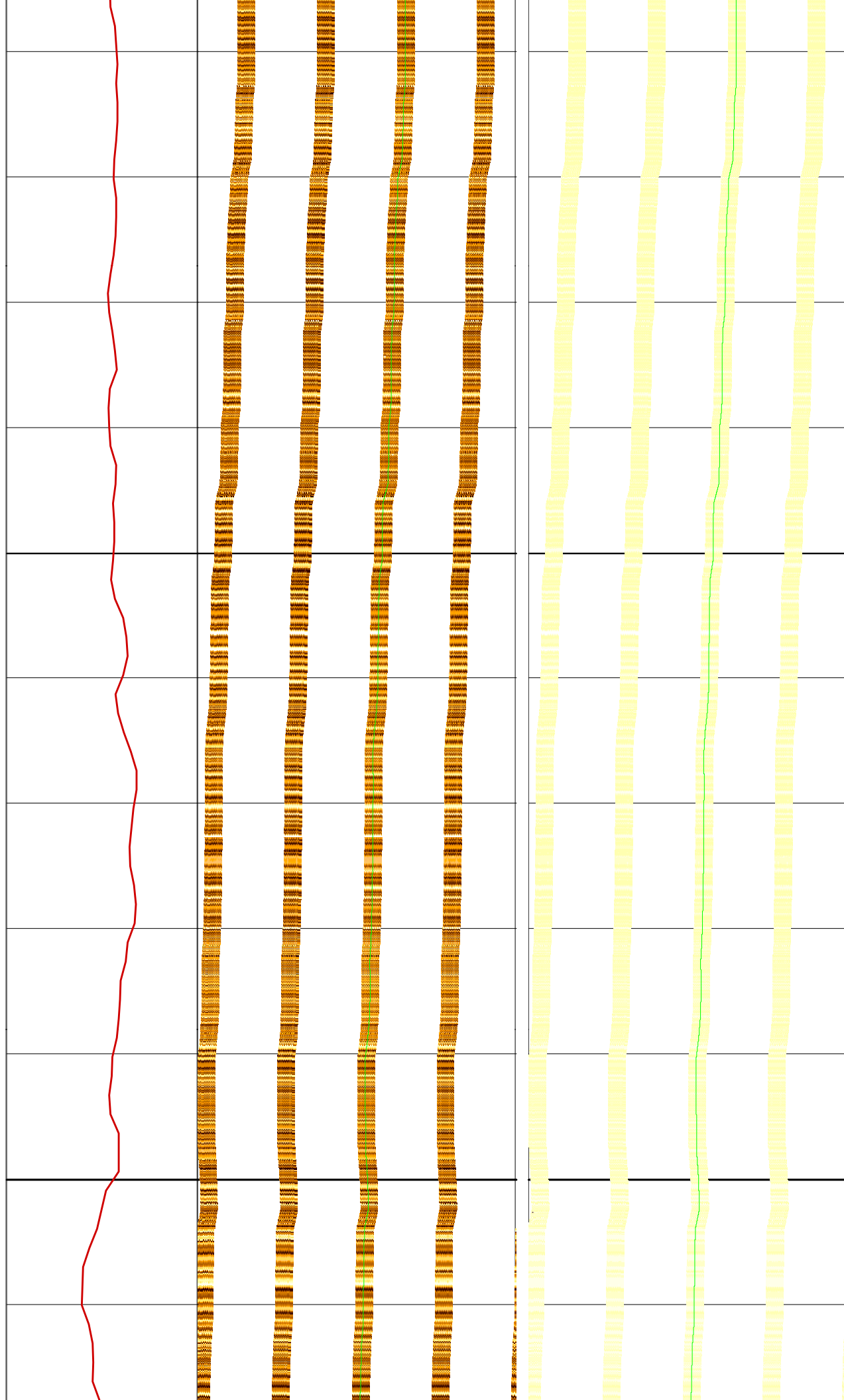
72

74

76

78

80



82

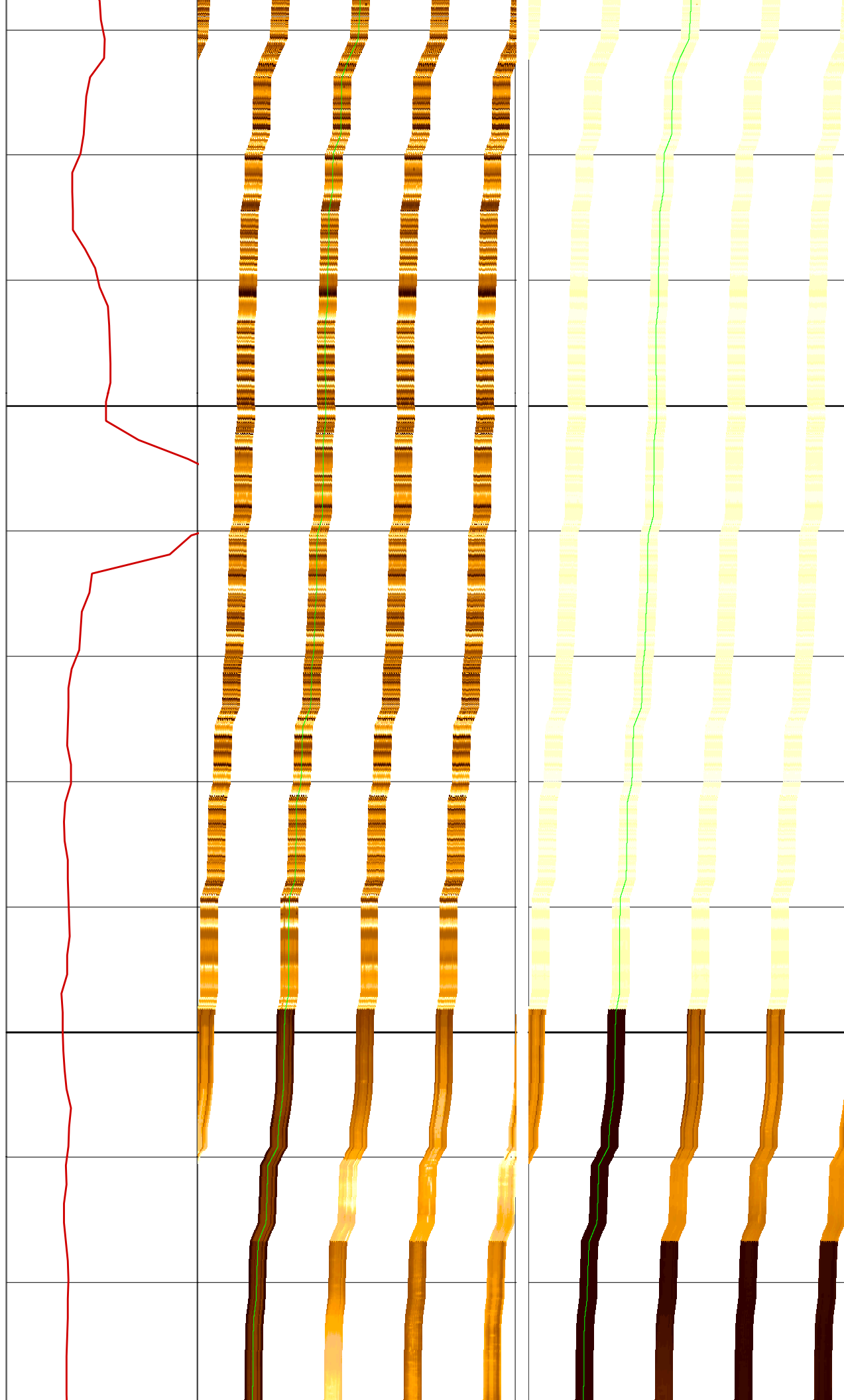
84

86

88

90

92



94

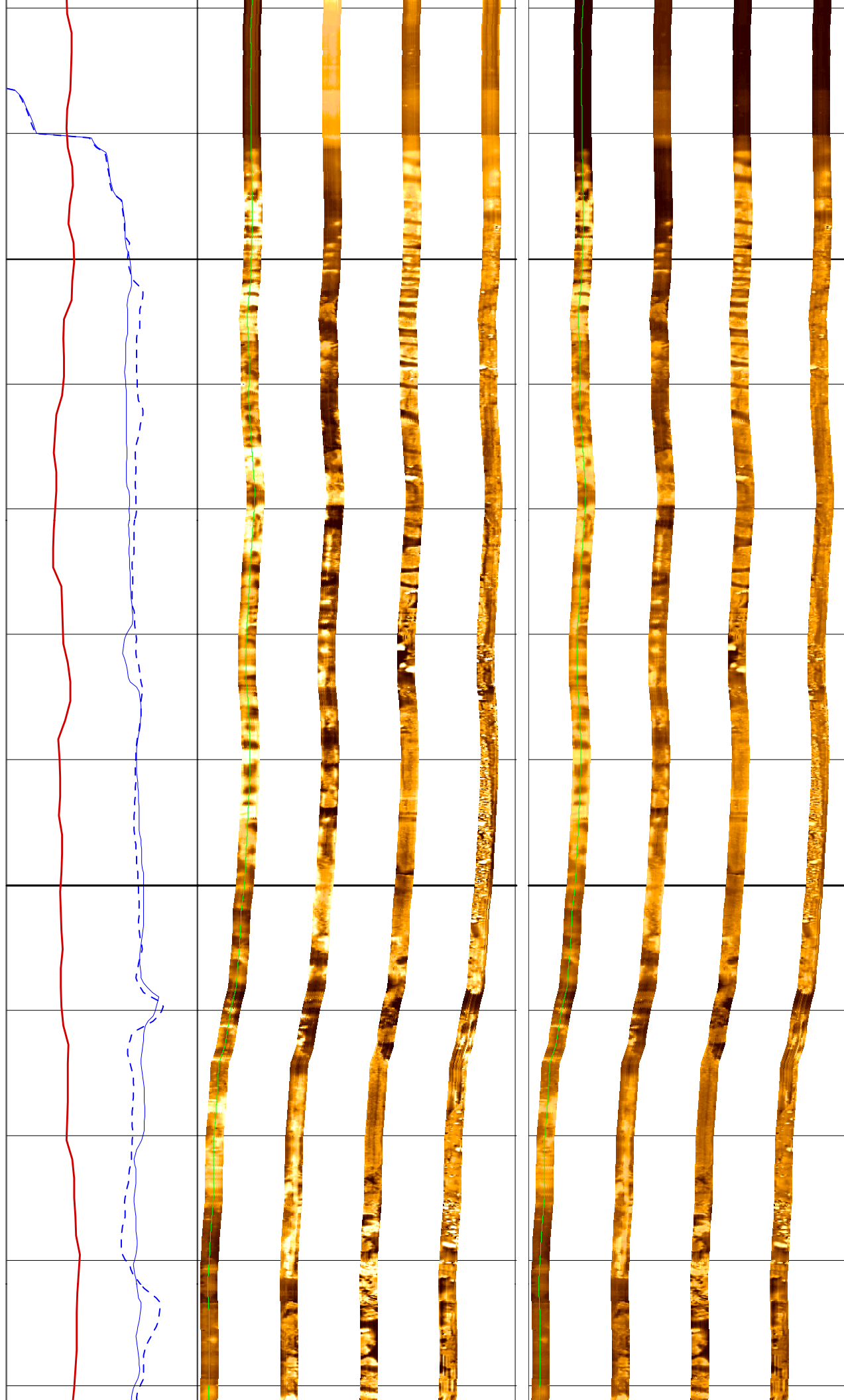
96

98

100

102

104



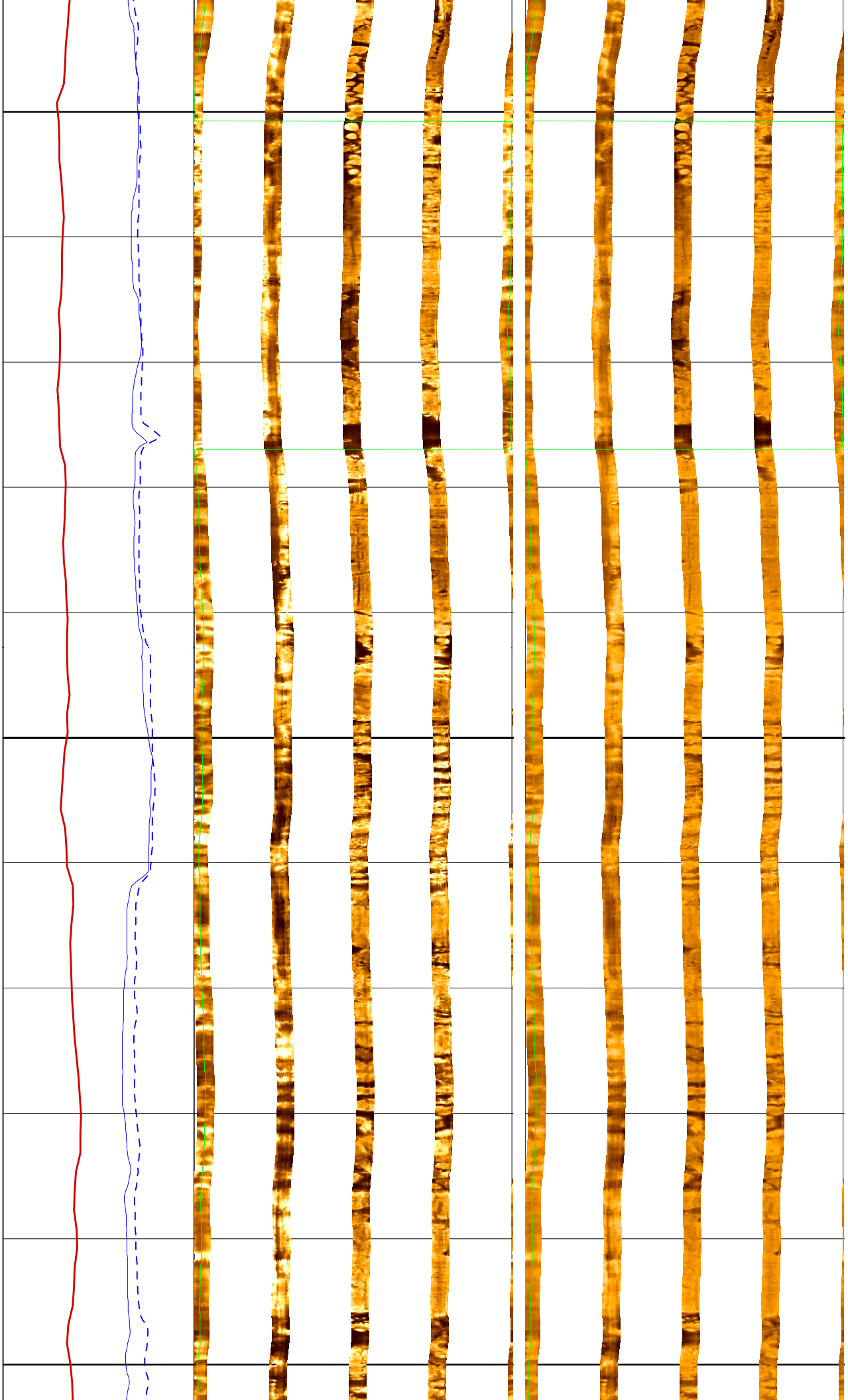
106

108

110

112

114





116

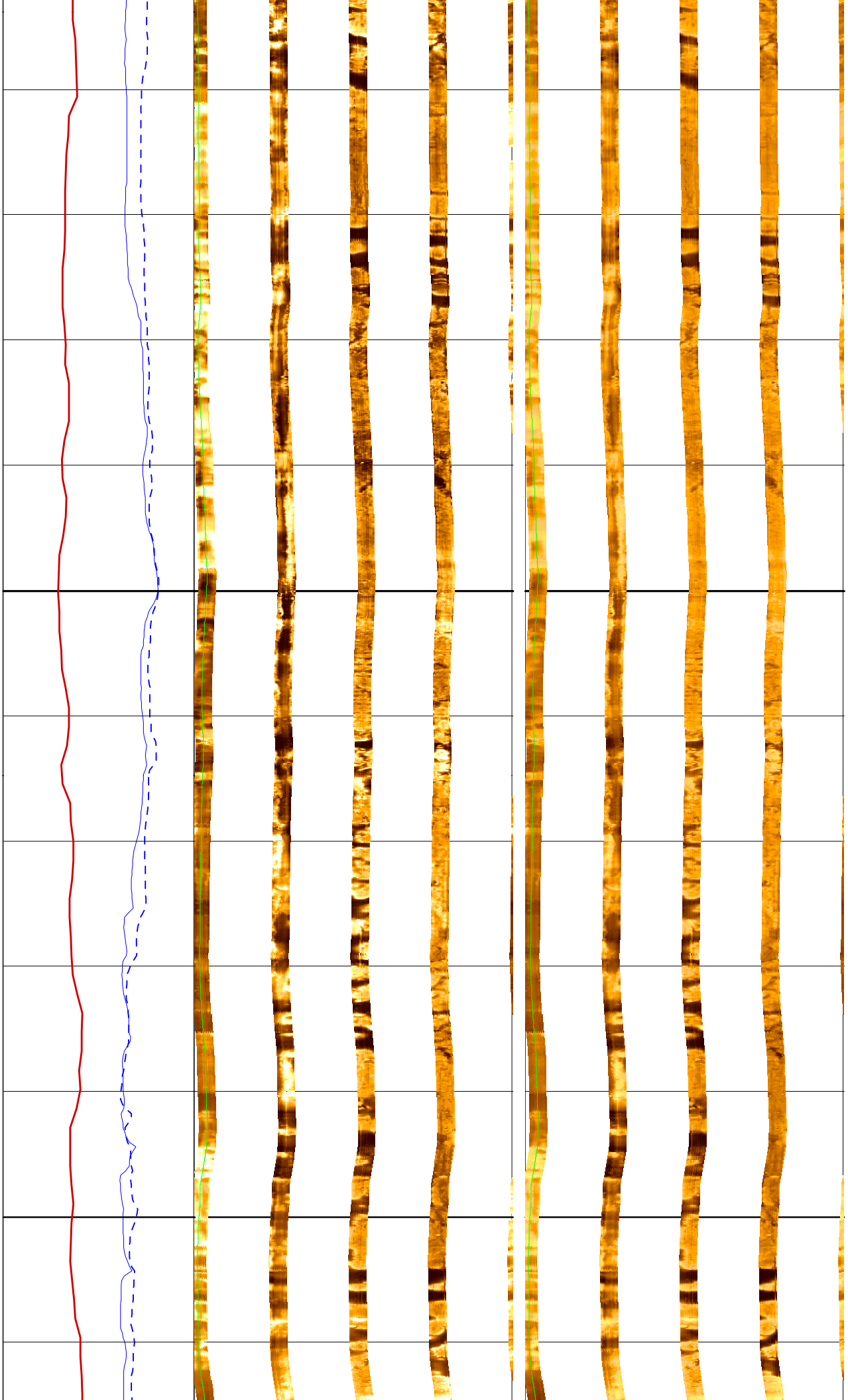
118

120

122

124

126



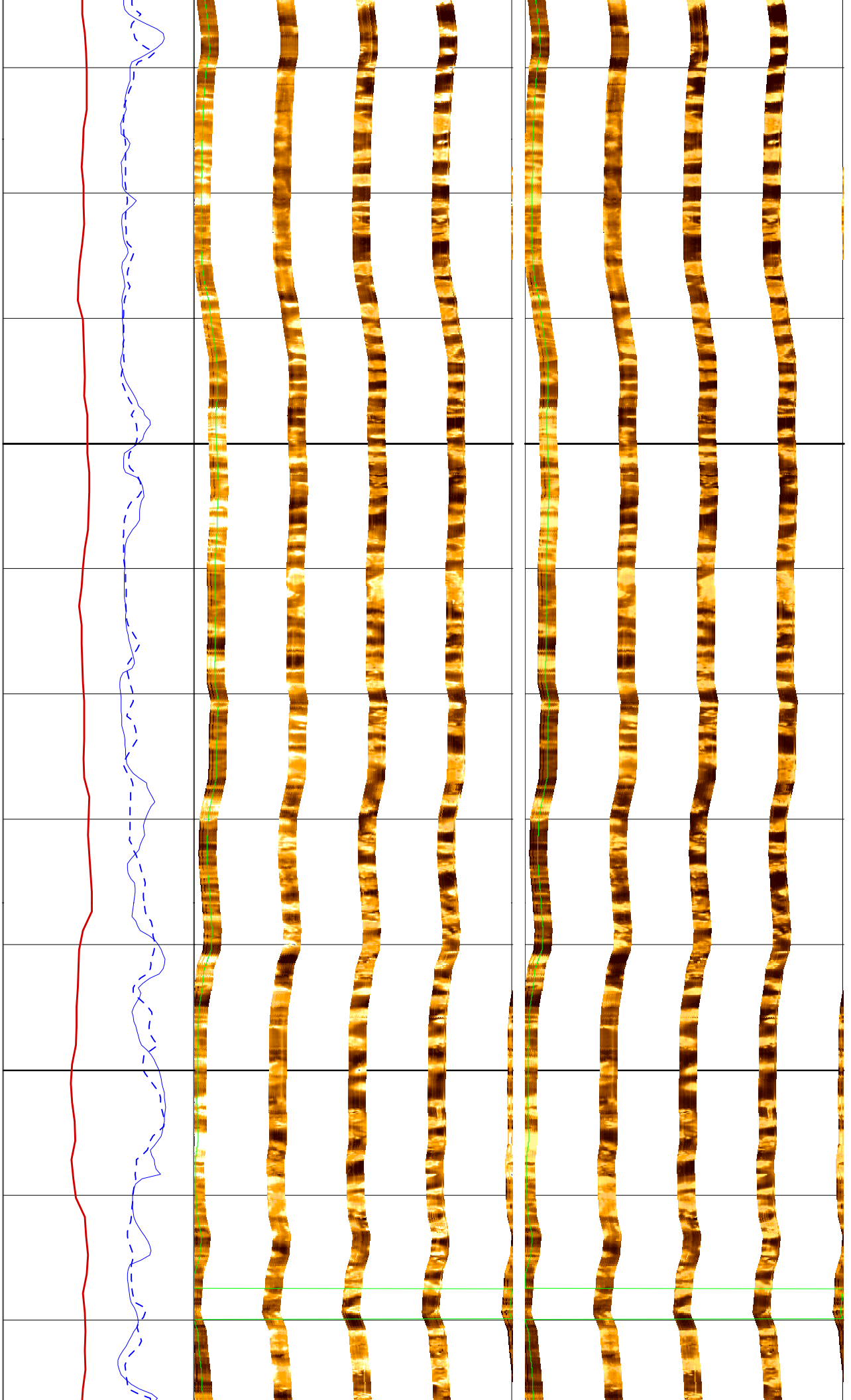
128

130

132

134

136





138

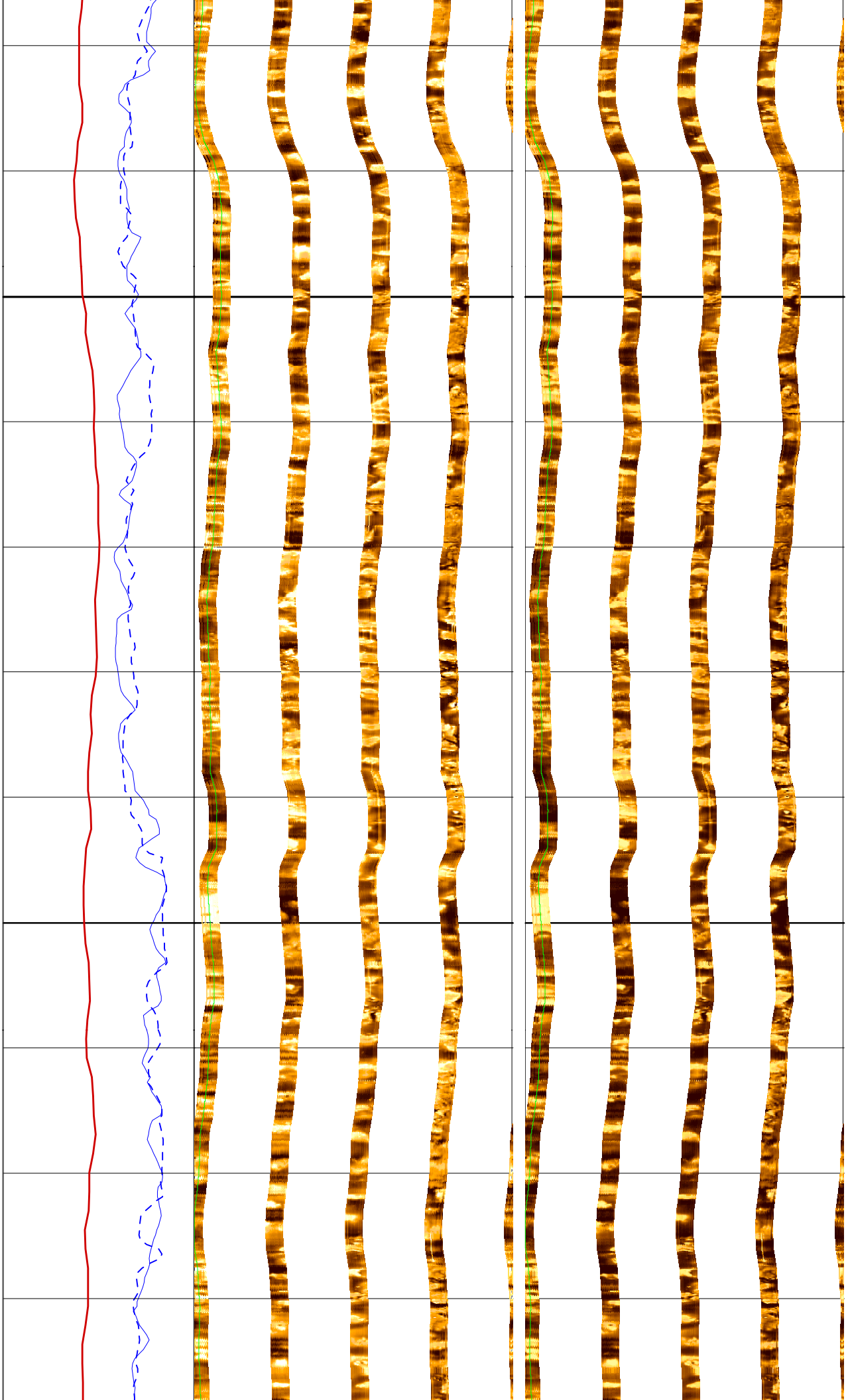
140

142

144

146

148



150

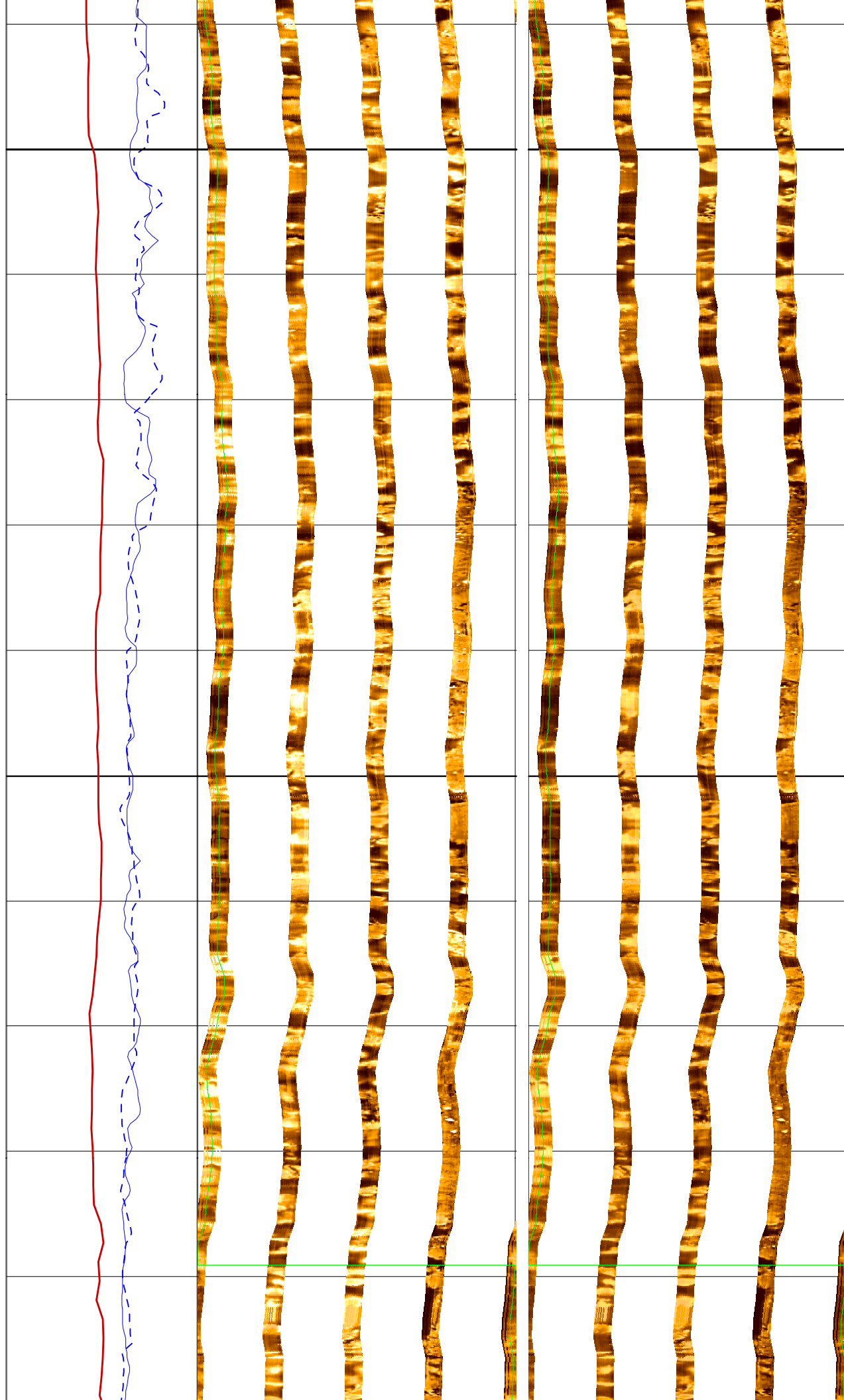
152

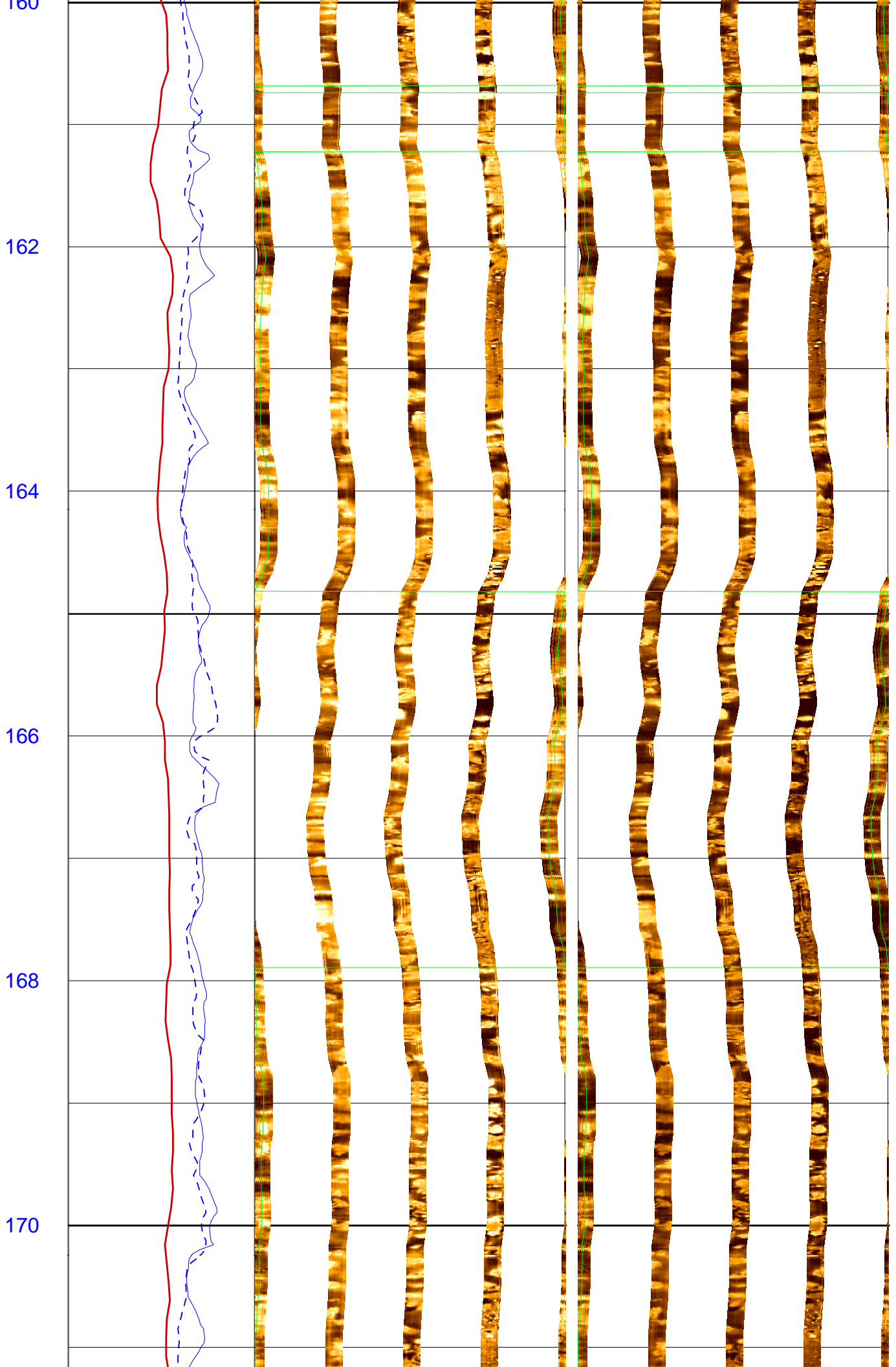
154

156

158

160





172

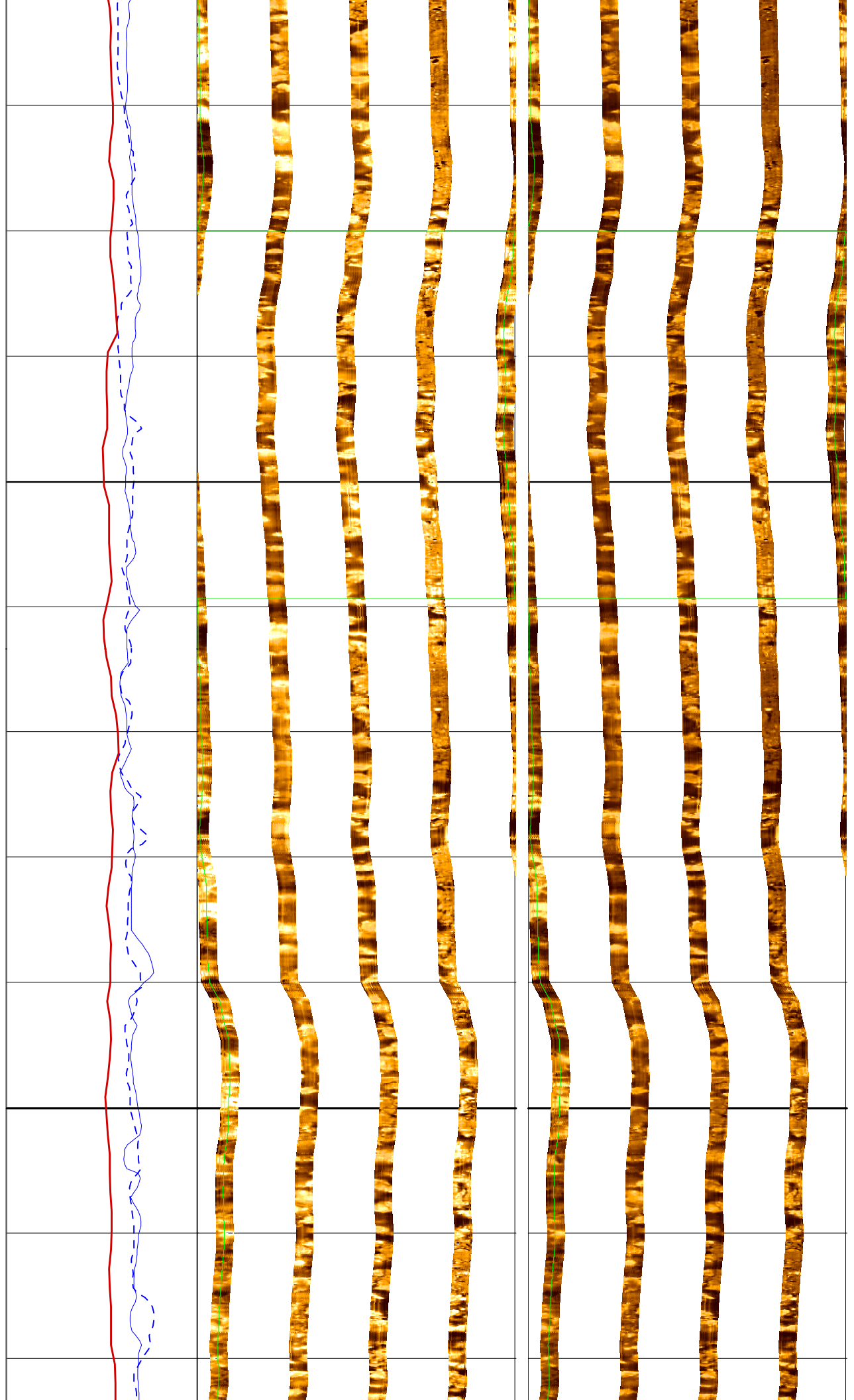
174

176

178

180

182



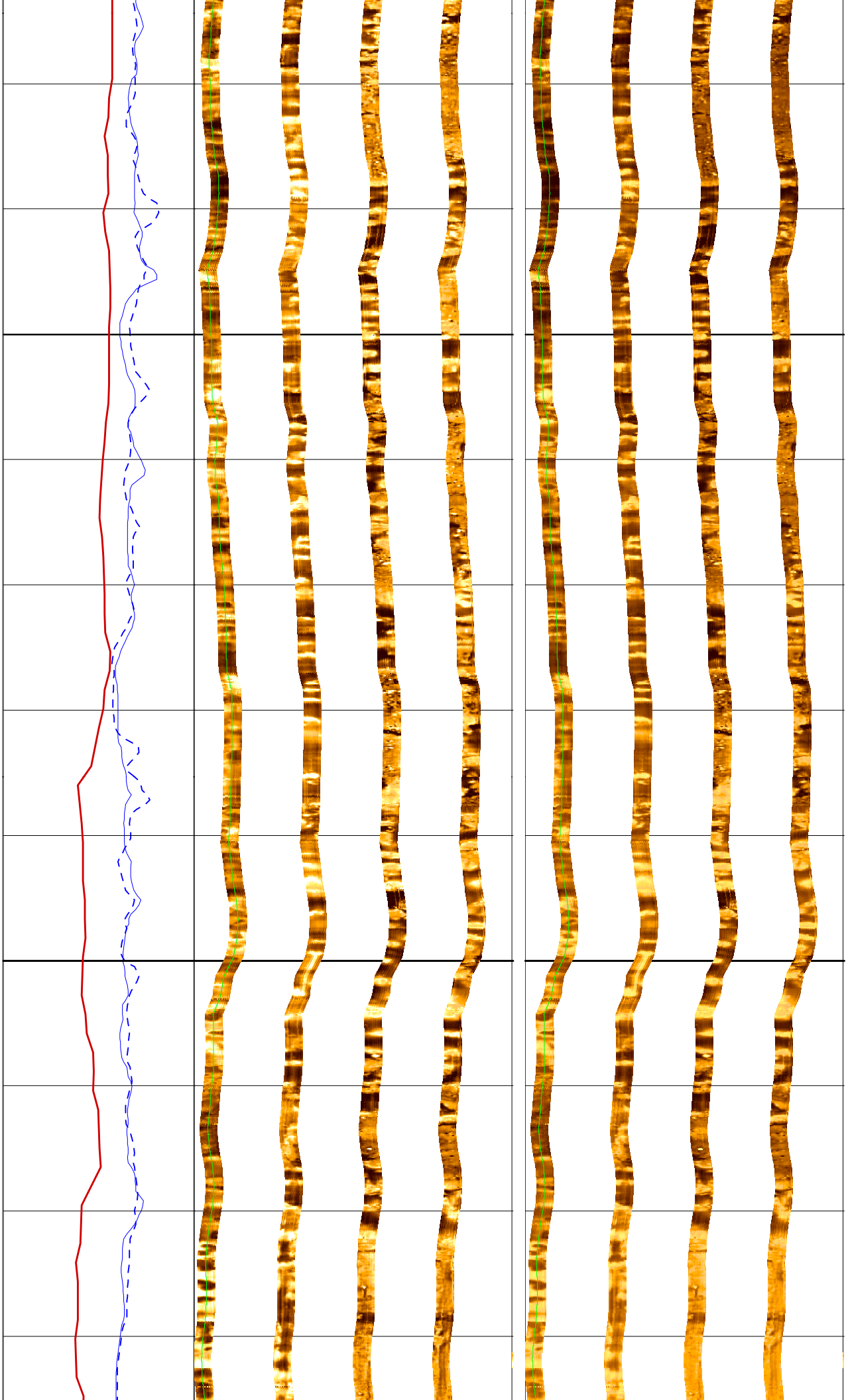
184

186

188

190

192





194

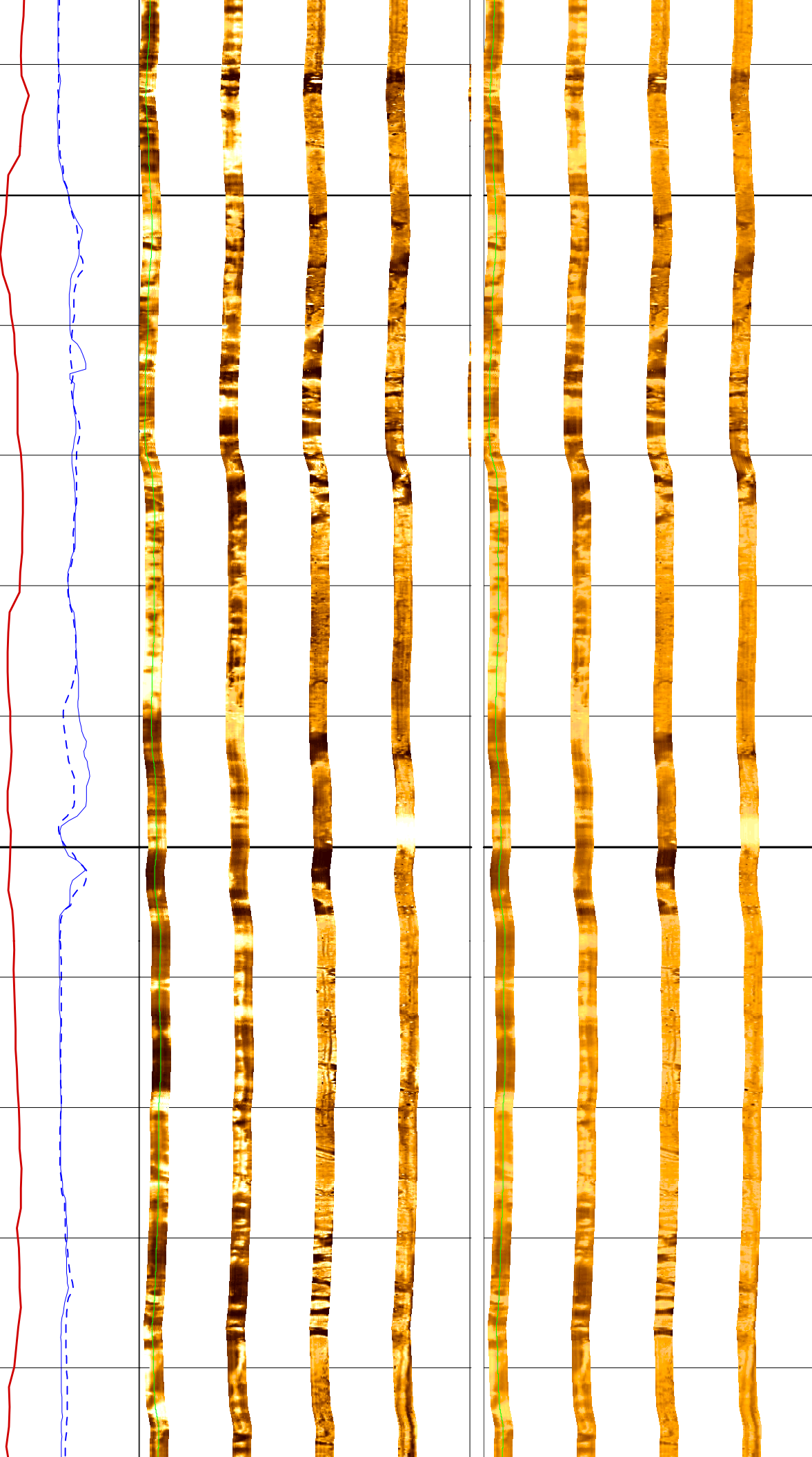
196

198

200

202

204



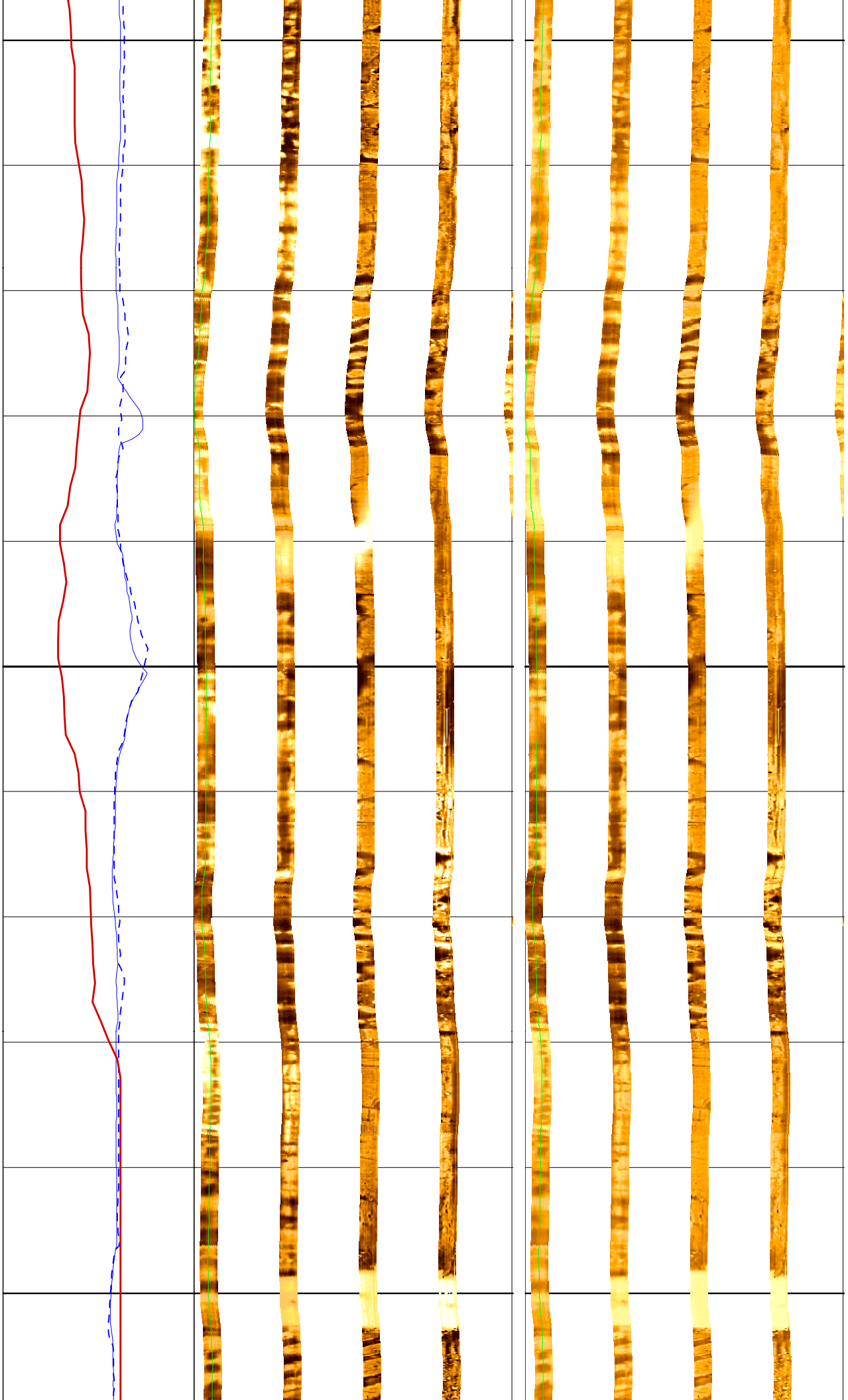
206

208

210

212

214



216

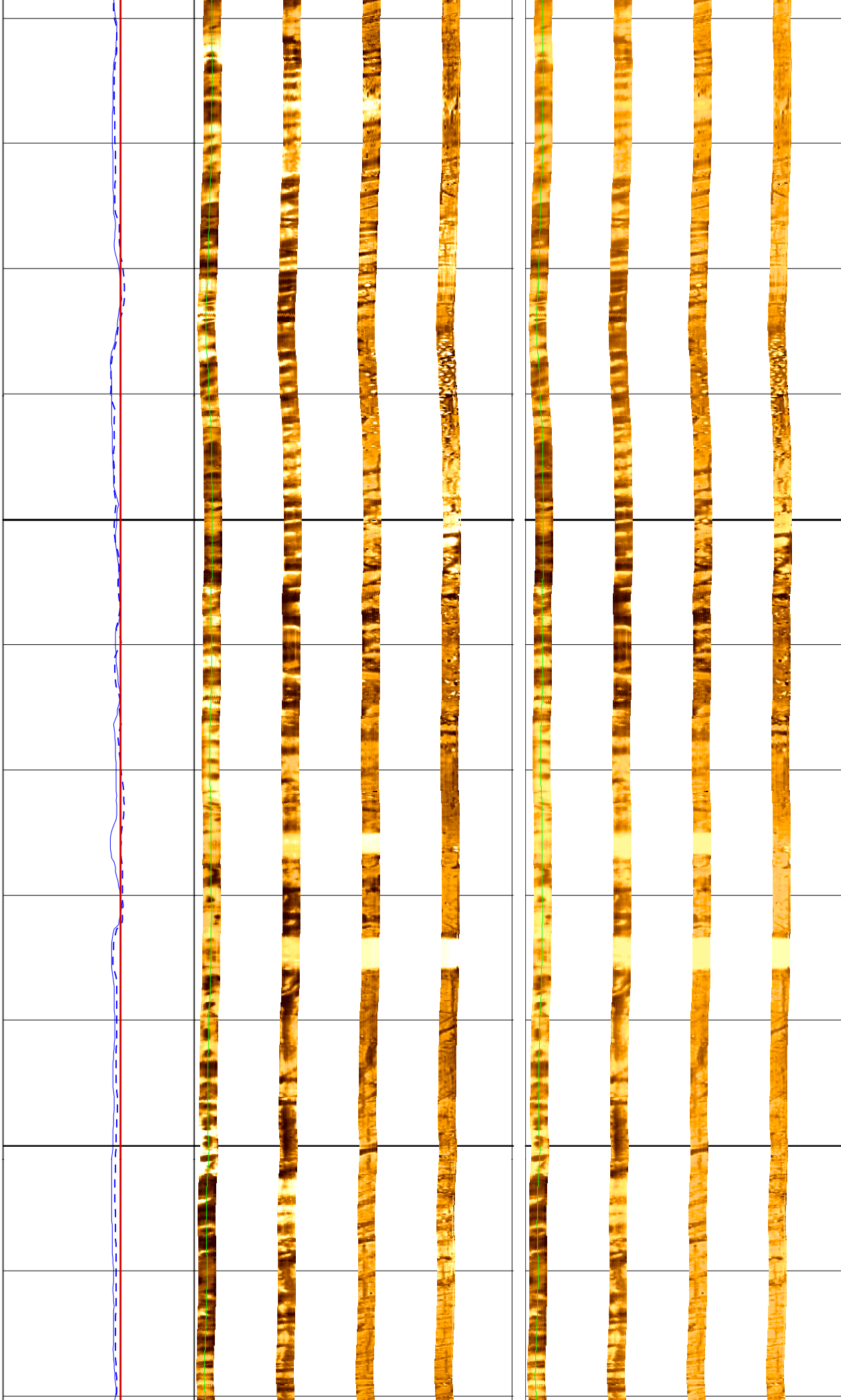
218

220

222

224

226





228

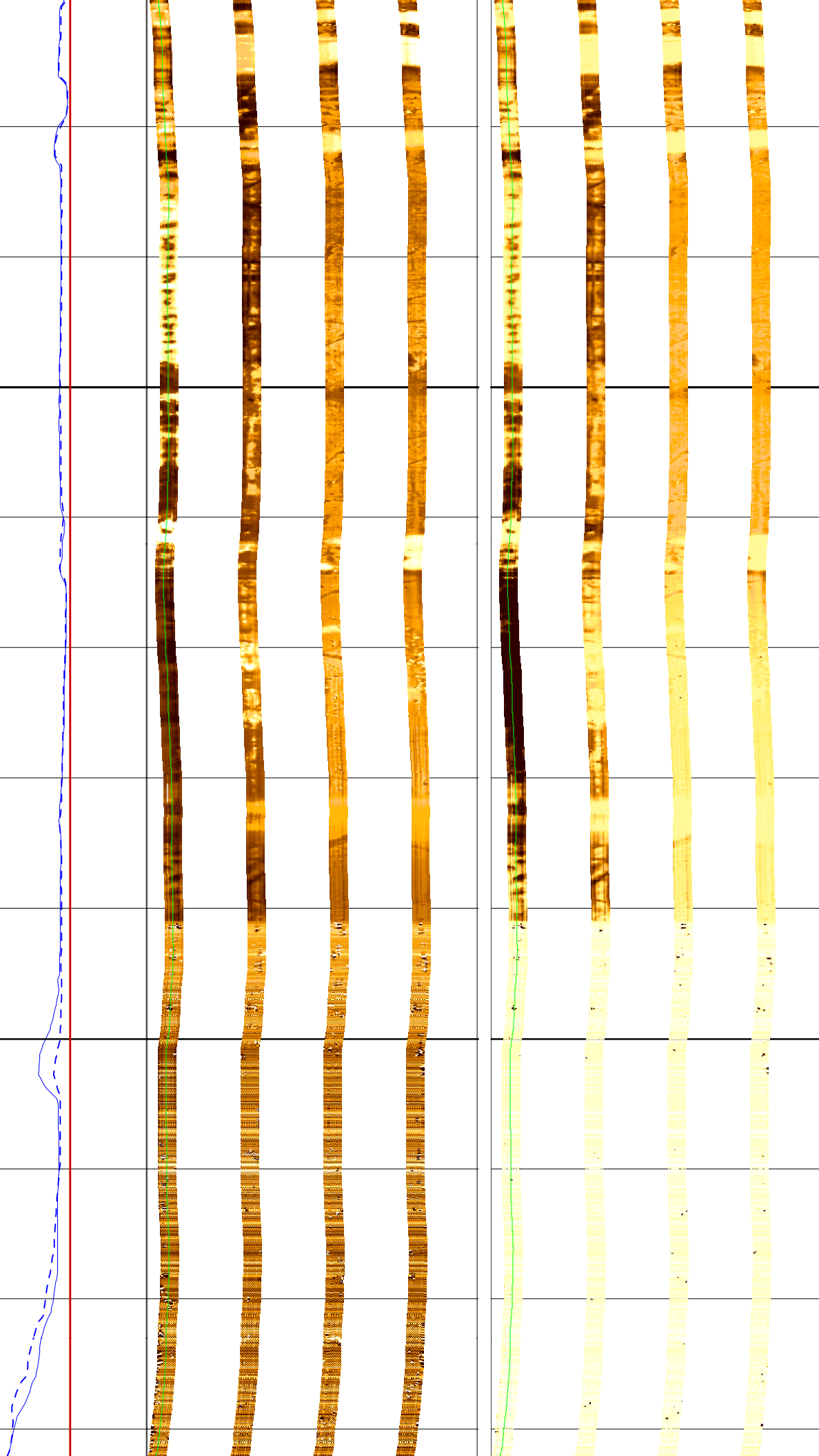
230

232

234

236

238



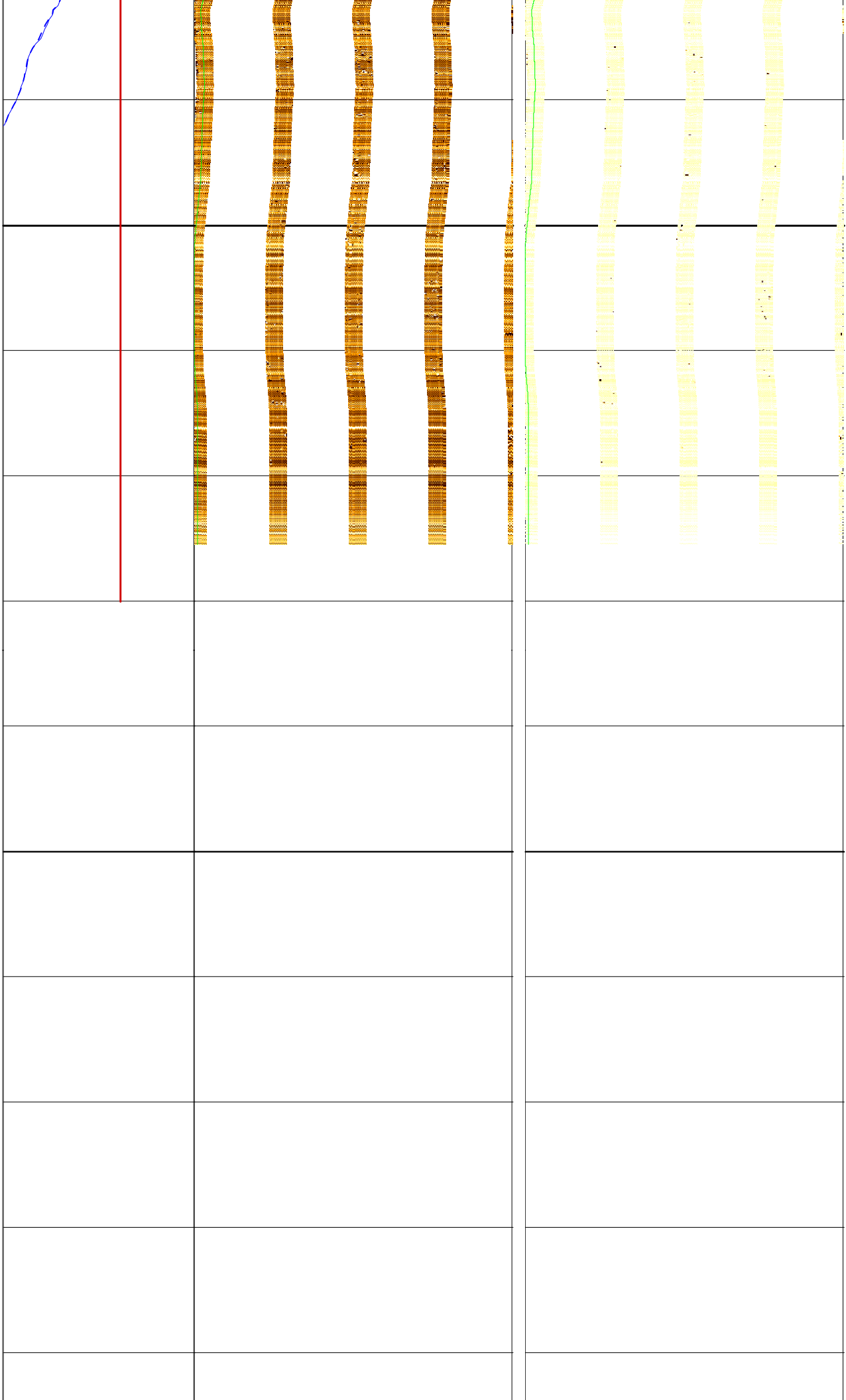
240

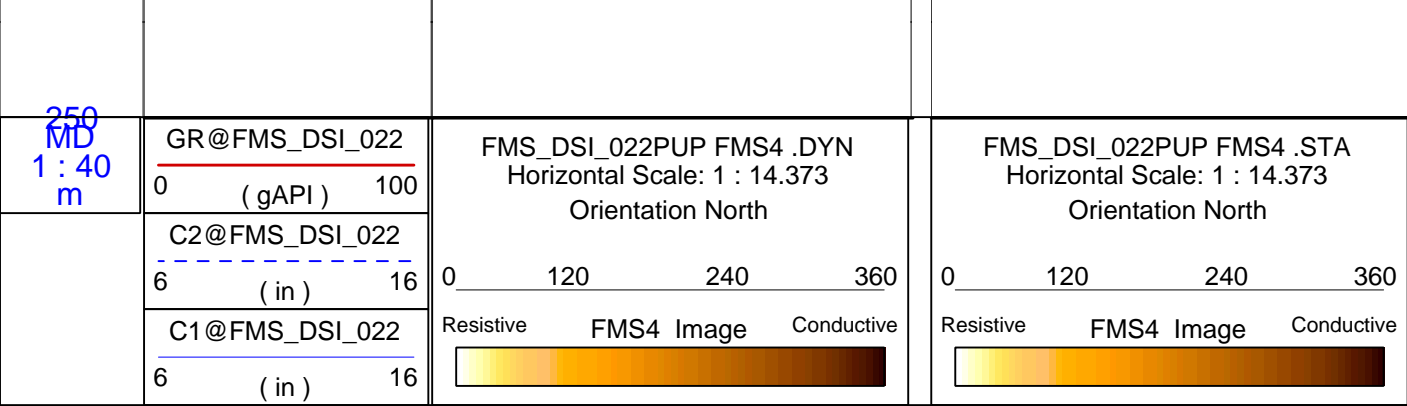
242

244

246

248





**Schlumberger**

## CALIBRATIONS

MAXIS Field Log

### Calibration and Check Summary

Measurement	Nominal	Master	Before	After	Change	Limit	Units
Micro Electrical Scanner - B (Slim) Wellsite Calibration - Caliper Calibration							
Before: 28-Apr-2005 15:20							
Caliper 1 Zero Measurement	8.000	N/A	8.072	N/A	N/A	N/A	IN
Caliper 2 Zero Measurement	8.000	N/A	7.553	N/A	N/A	N/A	IN
Caliper 1 Plus Measurement	12.00	N/A	12.28	N/A	N/A	N/A	IN
Caliper 2 Plus Measurement	12.00	N/A	11.76	N/A	N/A	N/A	IN
Micro Electrical Scanner - B (Slim) Wellsite Calibration - CROUZET ACCELEROMETER PROM HAS BEEN READ CORRECTLY							
Before: 8-May-2005 8:54							
TEMPERATURE REFERENCE :	N/A	N/A	20	N/A	N/A	N/A	DEGC
YEAR OF CALIBRATION :	N/A	N/A	99	N/A	N/A	N/A	
MONTH OF CALIBRATION :	N/A	N/A	3	N/A	N/A	N/A	
SERIAL NUMBER :	N/A	N/A	743	N/A	N/A	N/A	
Micro Electrical Scanner - B (Slim) Wellsite Calibration - CROUZET MAGNETOMETER PROM HAS BEEN READ CORRECTLY							
Before: 8-May-2005 8:54							
TEMPERATURE REFERENCE :	N/A	N/A	25	N/A	N/A	N/A	DEGC
YEAR OF CALIBRATION :	N/A	N/A	91	N/A	N/A	N/A	
MONTH OF CALIBRATION :	N/A	N/A	5	N/A	N/A	N/A	
SERIAL NUMBER :	N/A	N/A	98	N/A	N/A	N/A	
Scintillation Gamma-Ray - N Wellsite Calibration - Detector Calibration							
Before: 6-May-2005 21:58							
Gamma Ray (Jig - Bkg)	166.0	N/A	166.0	N/A	N/A	15.09	GAPI
Gamma Ray (Calibrated)	165.0	N/A	165.0	N/A	N/A	15.00	GAPI

### Micro Electrical Scanner - B (Slim) / Equipment Identification

**Primary Equipment:**

MEST Sonde - B	MEDS - B
MEST Preamplifier Cartridge - AB	MEPC - AB
GPIT Cartridge - A	GPIC - A
MEST Acquisition Cartridge - A	MEAC - A

**Auxiliary Equipment:**

MEST-B Preamplifier Cartridge Housing	MEPH - A
MEST Acquisition Cartridge Housing (Slim)	MEAH - B

Scintillation Gamma-Ray - N / Equipment Identification

Primary Equipment:

Scintillation Gamma Cartridge  
 Scintillation Gamma Detector

SGC - TB  
 SGD - TAA




Auxiliary Equipment:

Scintillation Gamma Housing  
 Gamma Source Radioactive

SGH - K  
 GSR - U/Y

Scintillation Gamma-Ray - N Wellsite Calibration

Detector Calibration

Phase	Gamma Ray Background GAPI	Value	Phase	Gamma Ray (Jig - Bkg) GAPI	Value	Phase	Gamma Ray (Calibrated) GAPI	Value
Before		1.507	Before		166.0	Before		165.0
	0 (Minimum)      30.00 (Nominal)      120.0 (Maximum)			150.9 (Minimum)      166.0 (Nominal)      181.1 (Maximum)			150.0 (Minimum)      165.0 (Nominal)      180.0 (Maximum)	

Before: 6-May-2005 21:58

Company: Lamont Doherty

**Schlumberger**

Well: Expedition 307 Site U1318B

Field: Porcupine Basin Carbonate Mounds

Rig: Joides Resolution

Country: Ireland

Formation Micro-Scanner

Gamma Ray