

Company: Integrated Ocean Drilling Program

Well: IODP Exp 308 Hole U1319B
Field: East Breaks Block 735
Rig: Joides Resolution State: Texas

PERFORM - APWD 2 in / hr Time Based Recorded Mode and Real-Time Log

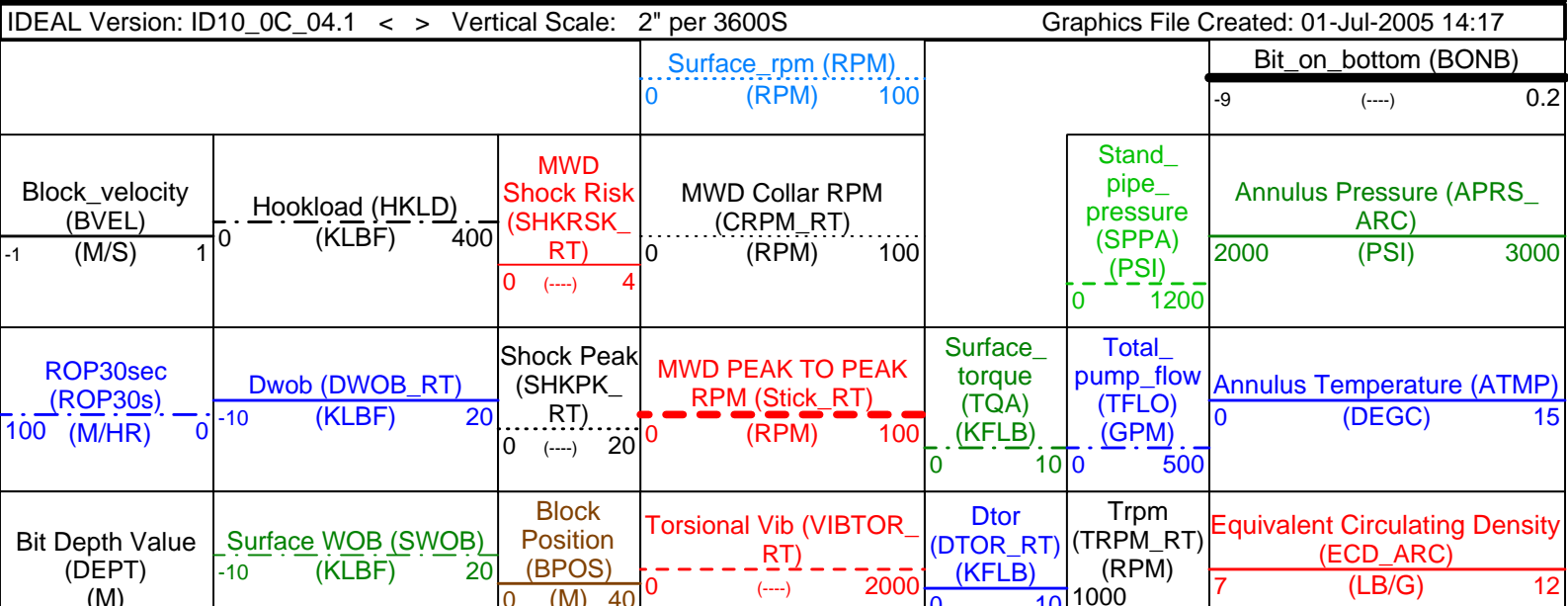
Total depth: 1621 m		K.B. Top Drive
Spud date: 12-Jun-2005		G.L. -1430.6 m
Runs: 1 To 1		D.F. 10.4 m
Permanent datum: _____		Mean Sea Level
Log measured from: _____		Drill Floor
Depth reference: _____		Driller's Depth
Service Order no. 40012055	NAD 27 UTM Zone 15N	Elev.: 0 m
		10.4 m above Perm. datum
Longitude W94.40136	Latitude N27.26646	

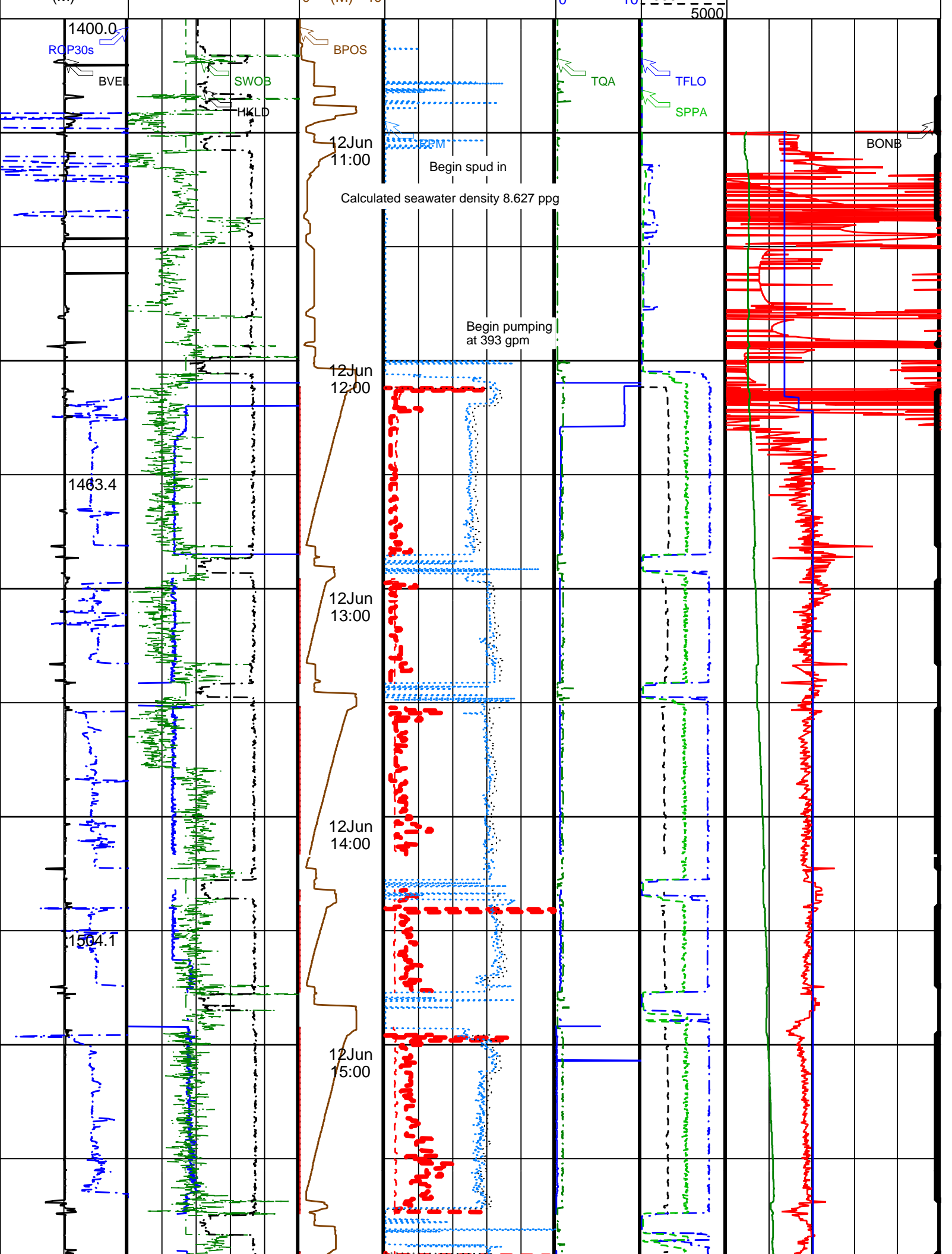
Depth logged: 1441 m To 1621 m	Mag decl: 3.52 deg.	Other services:
Date logged: 12-Jun-05 To 12-Jun-05	Mag dip: 56.97 deg.	

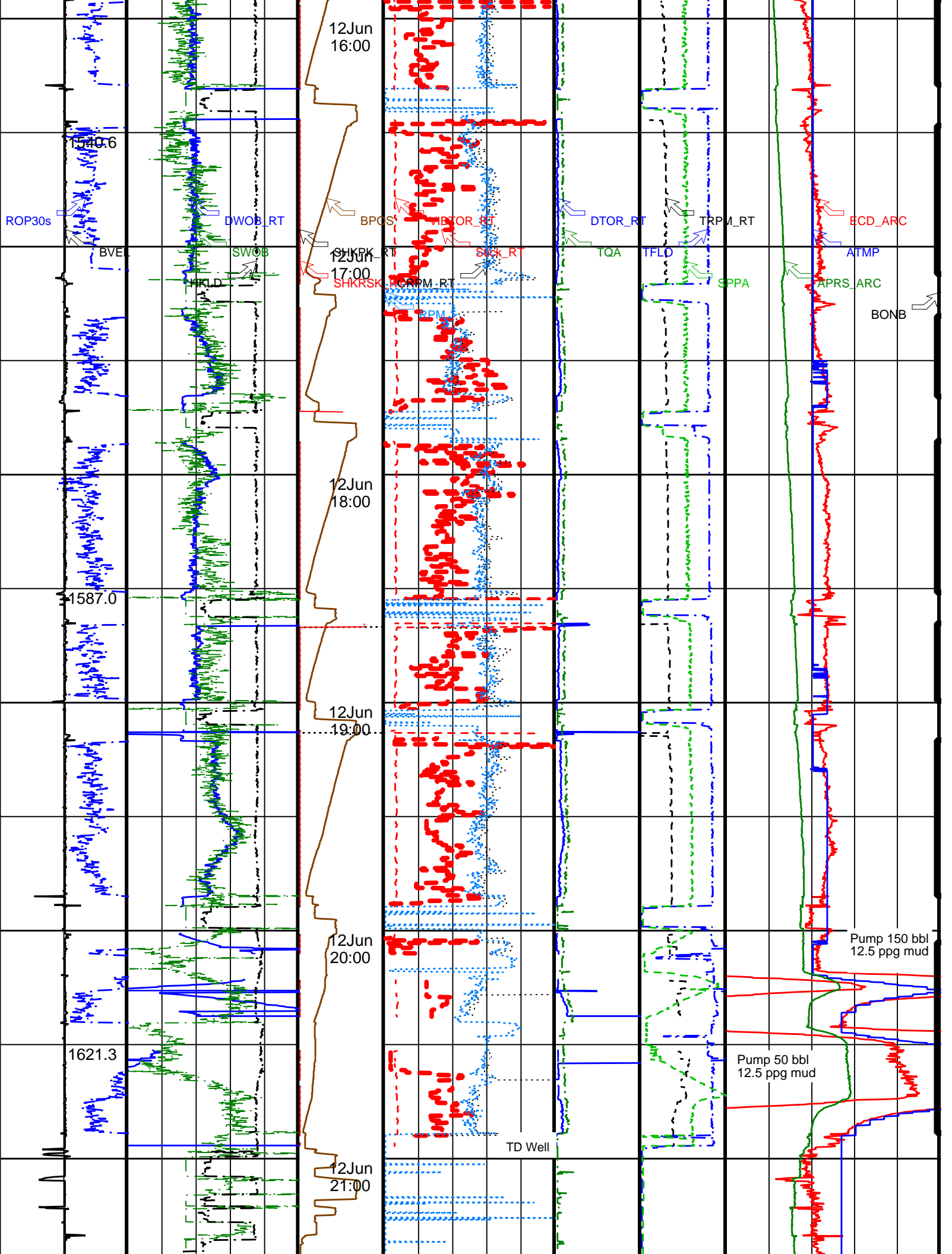
Bore hole record		Casing record				
Hole size	from	to	Size	Density	from	to
9.875 in.	1441 m	1621 m				
Type	Mud record	Borehole deviation record				
	from	to	Min	Max	from	to
Seawater	1441 m	1621 m	0.62 deg.	1.03 deg.	1441 m	1621 m

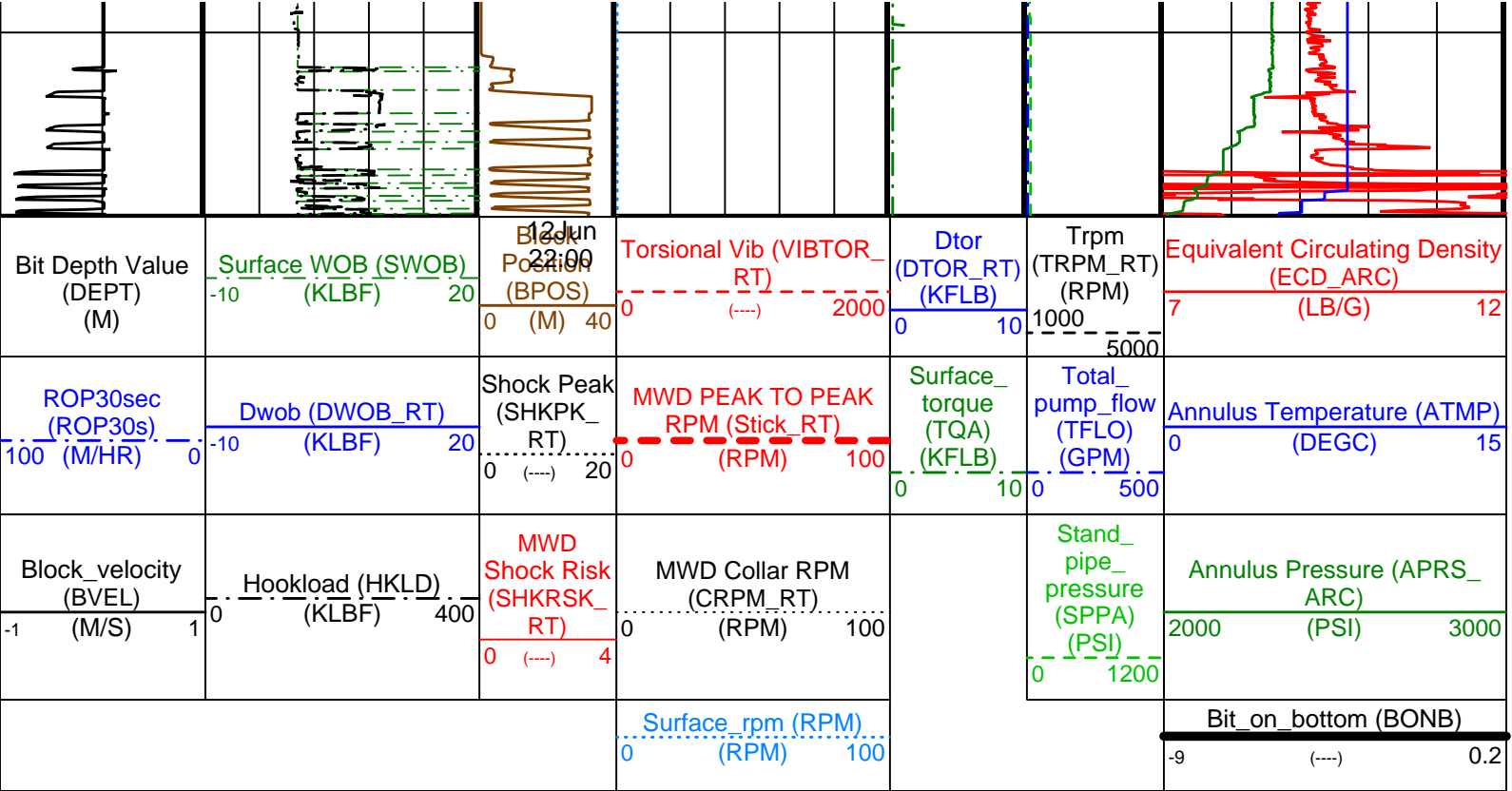
Surface equipment		Software record	
Unit	TWIS	IDEAL Wis	10_OC_04.1
Depth system	Geolograph	SPM	10_1C_05
		LWD	See Remarks
		MWD	8.0c00

PERFORM - APWD U1319B









Company: Integrated Ocean Drilling Program
Well: IODP Exp 308 Hole U1319B
Field: East Breaks Block 735
Rig: Joides Resolution
State: Texas

Schlumberger

PERFORM - APWD
 2 in / hr Time Based
 Recorded Mode and Real-Time Log