



**DISCLAIMER**

THE USE OF AND RELIANCE UPON THIS RECORDED-DATA BY THE HEREIN NAMED COMPANY (AND ANY OF ITS AFFILIATES, PARTNERS, REPRESENTATIVES, AGENTS, CONSULTANTS AND EMPLOYEES) IS SUBJECT TO THE TERMS AND CONDITIONS AGREED UPON BETWEEN SCHLUMBERGER AND THE COMPANY, INCLUDING: (a) RESTRICTIONS ON USE OF THE RECORDED-DATA; (b) DISCLAIMERS AND WAIVERS OF WARRANTIES AND REPRESENTATIONS REGARDING COMPANY'S USE OF AND RELIANCE UPON THE RECORDED-DATA; AND (c) CUSTOMER'S FULL AND SOLE RESPONSIBILITY FOR ANY INFERENCE DRAWN OR DECISION MADE IN CONNECTION WITH THE USE OF THIS RECORDED-DATA.


OTHER SERVICES1 OS1: DITE/GPIT/HLDS/APS/HNGS OS2: WSTA OS3: OS4: OS5:	OTHER SERVICES2 OS1: OS2: OS3: OS4: OS5:
--	---

REMARKS: RUN NUMBER 1 Hole Cored With APC. All depths in Meters Below Rig Floor (MBRF). Hole flushed with Sepiolite Sea Floor Driller- 1480.4 MBRF. Sea Floor Logger- 1478 MBRF. Total Depth Driller- 1780 MBRF. Total Depth Logger- 1774.5 MBRF. Casing Bottom Driller- 1541.9 MBRF. Casing Bottom Logger- 1540 MBRF.	REMARKS: RUN NUMBER 2
---	-----------------------

RUN 1			RUN 2		
SERVICE ORDER #:	12C0-301		SERVICE ORDER #:		
PROGRAM VERSION:			PROGRAM VERSION:		
FLUID LEVEL:			FLUID LEVEL:		
LOGGED INTERVAL	START	STOP	LOGGED INTERVAL	START	STOP

**EQUIPMENT DESCRIPTION**

RUN 1		RUN 2	
<b>SURFACE EQUIPMENT</b>			
GSR-U/Y 166 WITM (DTS)-A			

<b>DOWNHOLE EQUIPMENT</b>			
LEH-QT		32.33	
LEH-QT			
DTC-H	CTEM	31.16	
ECH-KC	TelStatus	31.44	
	ToolStatu	30.53	
SGT-N	Gamma Ray	30.25	30.53
SGH-K 2450			

SGC-TB 9585  
SGD-TAA

AH-MCD  
AH-MCD

28.85

DSST-B

26.73

SPAC-B 8128  
ECH-SD 8128  
SMDR-BD 8076  
SSIJ-BA 8127  
SMDX-AA 8148

PWF — 11.18

AH-MCD  
AH-MCD

11.18

DTA-A  
ECH-KE  
DTA-A 8231

8.90

MEST-B  
MEAH-B 769  
MEAC-A 875  
MEPH-A 769  
GPIC-A 840  
MEPC-AB 877  
MEDS-B 724

7.68

MEDR MEAC  
MEPC MEDS-B  
HV DF  
Tension GPIT  
TOOL ZERO

0.46

0.00

MAXIMUM STRING DIAMETER 4.50 IN  
MEASUREMENTS RELATIVE TO TOOL ZERO  
ALL LENGTHS IN METERS

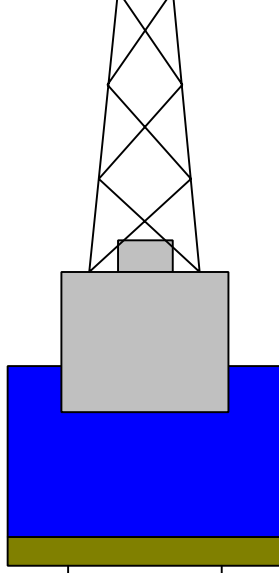
Production String	(in)	(m)	Well Schematic	(m)	(in)	Casing String
	OD	ID		MD	MD	

Kelly Bushing Elevation

11.3

Mean Sea Level

0.0



0.0

5.500

4.000

Casing String

1480.4

5.500

4.000

Casing Shoe  
Borehole Segment

1480.4

9.875



1780.0

9.875

Borehole Segment Bottom

**Schlumberger**

FIRST PASS

MAXIS Field Log

Output DLIS Files

DEFAULT FMS\_DSI\_033LUP FN:14 PRODUCER 10-Jun-2005 05:46 1779.4 M 1545.0 M

OP System Version: 12C0-301  
MCM

MEST-B	12C0-301	DTA-A	12C0-301
DSST-B	12C0-301	SGT-N	12C0-301
DTC-H	12C0-301		

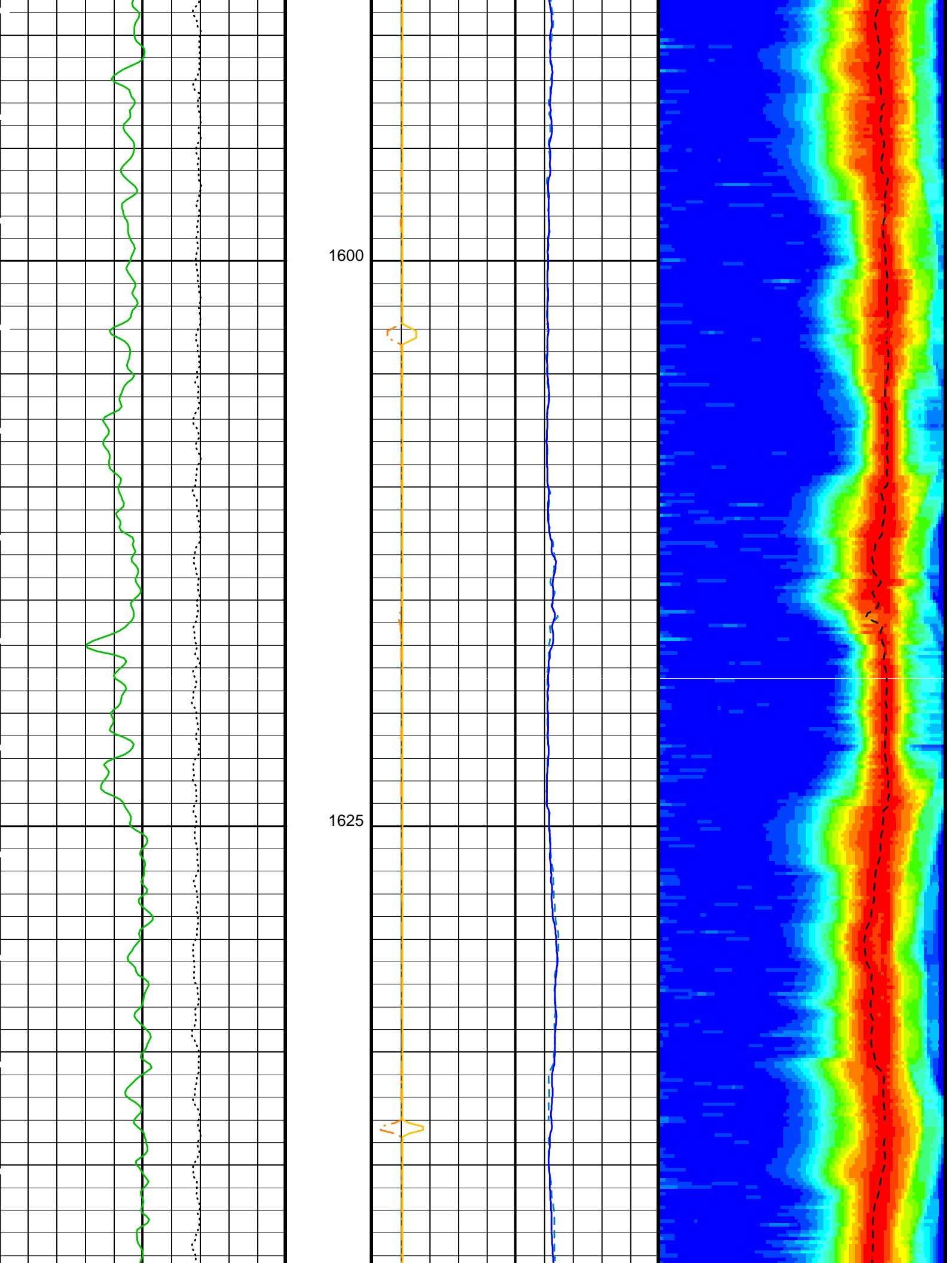
PIP SUMMARY

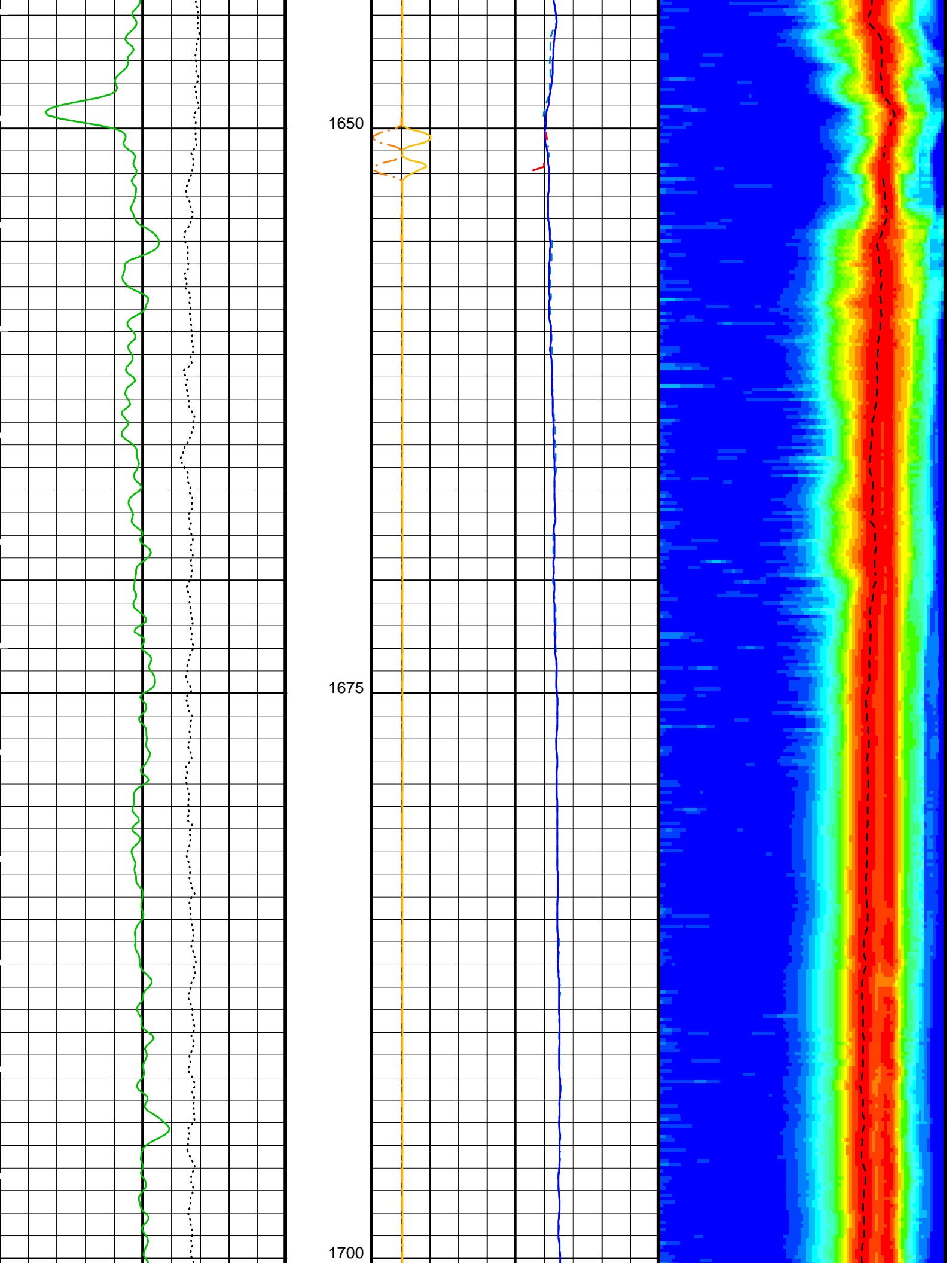
Time Mark Every 60 S

Delta-T Shear - P & S (DT4S)		
440	(US/F)	40

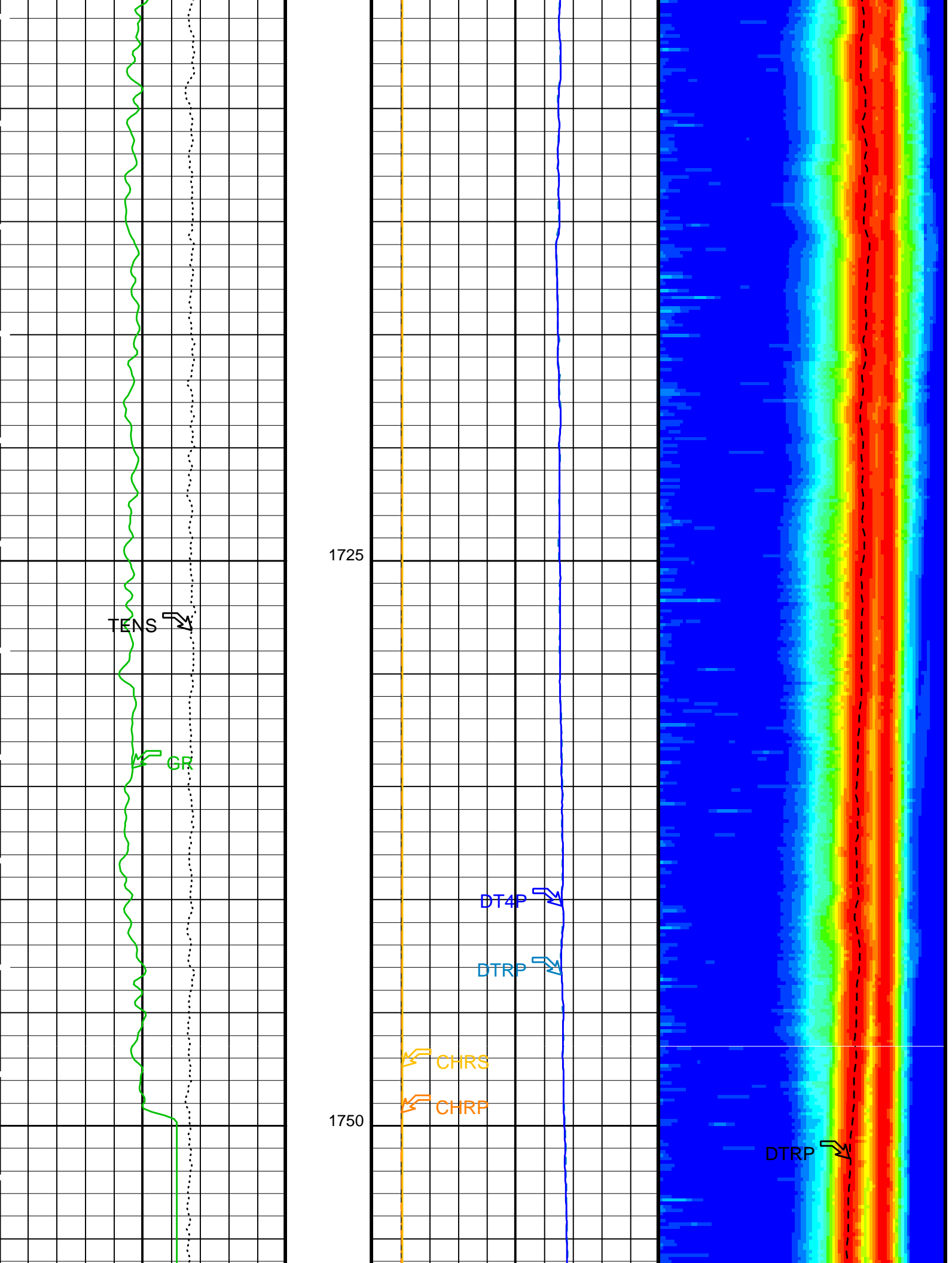
Delta-T Shear / RA - P & S (DTRS)		
440	(US/F)	40











1725

TENS ↘

GR ↘

DT4P ↘

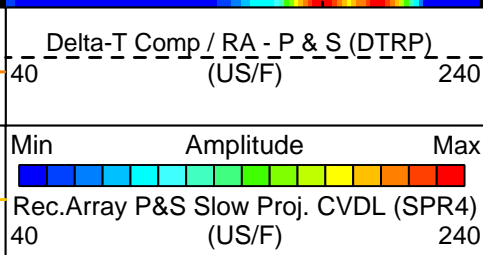
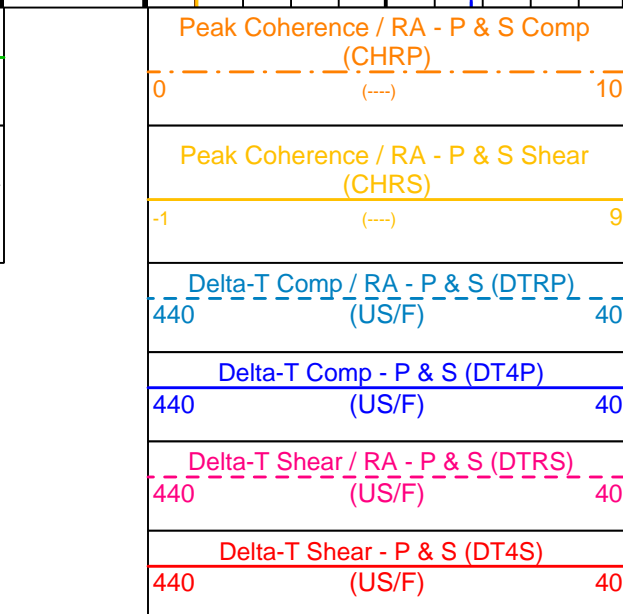
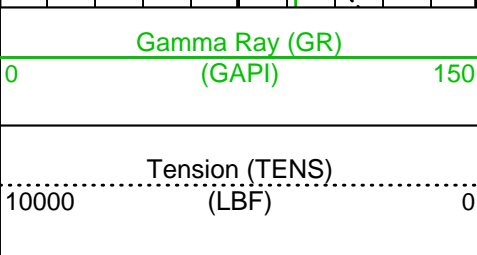
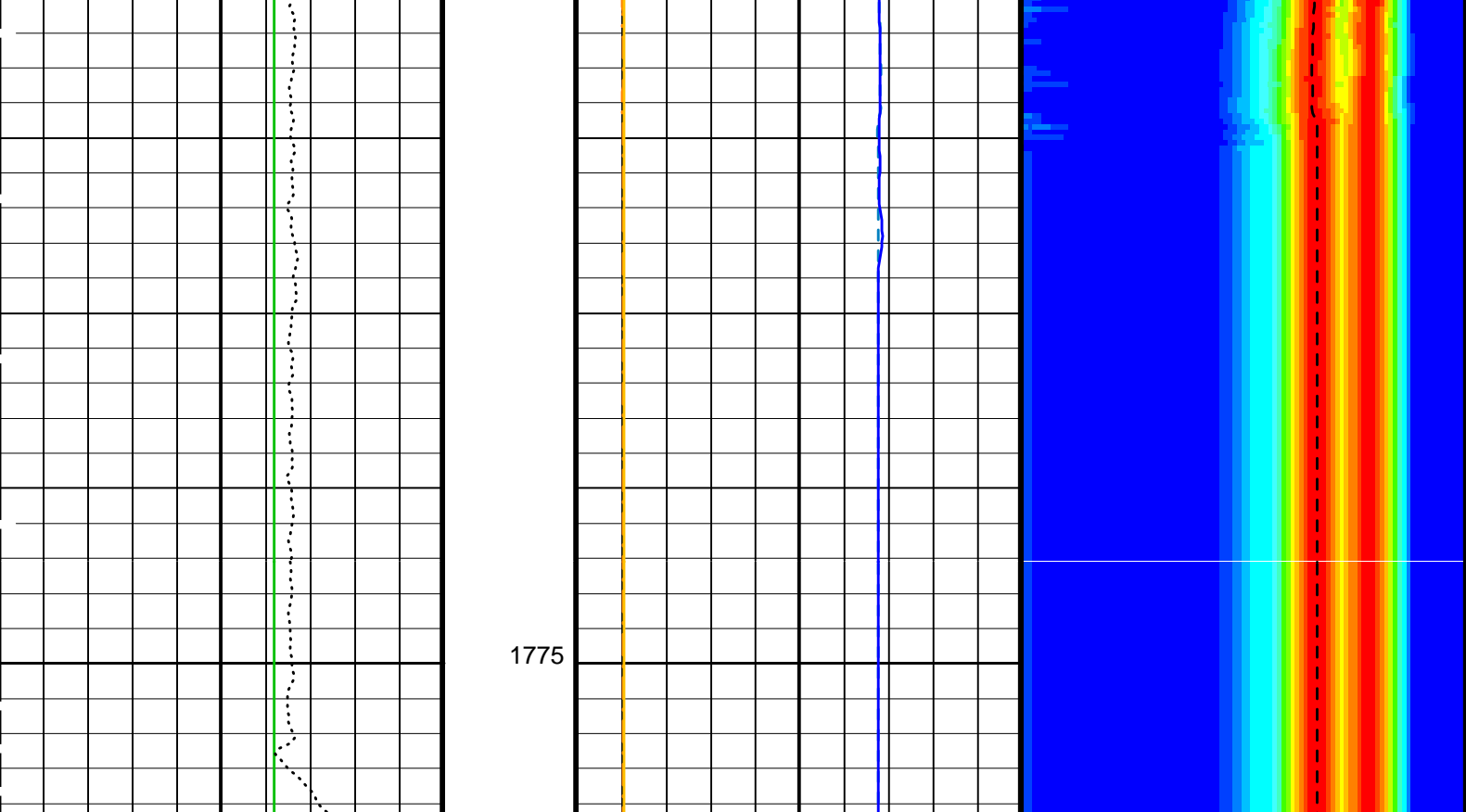
DTRP ↘

CHRS ↘

CHRP ↘

1750

DTRP ↘



PIP SUMMARY

Time Mark Every 60 S

Parameters

DLIS Name	Description	Value
	DSST-B: Dipole Shear Imager - B	
BHS	Borehole Status	OPEN
CASF	Label Casing Function - Monopole P&S	50
COLL	Label Slowness Lower Limit - Monopole P&S Compressional	40 US/F
COUL	Label Slowness Upper Limit - Monopole P&S Compressional	205 US/F
DDE4	Digitizing Delay 4	0 US
DDEX	Digitizing Delay X	0 US
DSI4	Digitizer Sample Interval 4	10 US
DSIX	Digitizer Sample Interval X	40 US
DTF	Delta-T Fluid	189 US/F
DWC4	Digitizer Word Count 4	512
DWCX	Digitizer Word Count X	512
FILG	Label Fill Gap Control - Monopole P&S	COMP_SHEAR
LFC	Label Formation Character - Monopole P&S	DYNAMIC
MCS	Mean Casing Slowness	57 US/F
MTXG	Monopole Transmitter Geometry	186 IN

NWI4	Number Waveform Items 4	8	
NWIX	Number Waveform Items X	0	
RSMN	Label Shear/Compressional Minimum Ratio - Monopole P&S	1.4	
RSMX	Label Shear/Compressional Maximum Ratio - Monopole P&S	2.12	
RX1G	Receiver 1 Geometry	294	IN
RX2G	Receiver 2 Geometry	300	IN
RX3G	Receiver 3 Geometry	306	IN
RX4G	Receiver 4 Geometry	312	IN
RX5G	Receiver 5 Geometry	318	IN
RX6G	Receiver 6 Geometry	324	IN
RX7G	Receiver 7 Geometry	330	IN
RX8G	Receiver 8 Geometry	336	IN
SAM4	DSST Sonic Acquisition Mode 4 - High Frequency Monopole Mode for P&S		
		MFD_EVEN	
SAMX	DSST Sonic Acquisition Mode X - Both Dipoles or Monopole Mode for Expert		
		OFF	
SAS4	STC Sonic Array Status - Monopole P&S	255	
SBO4	STC Search Band Offset - Monopole P&S	500	US
SBR4	STC Baseline Removal - Monopole P&S	ON	
SBW4	STC Search Bandwidth - Monopole P&S	2000	US
SFC4	STC Formation Character - Monopole P&S	SELECTABLE	
SFM4	STC Filter - Monopole P&S	B3-12K	
SHLL	Label Slowness Lower Limit - Monopole P&S Shear	75	US/F
SHUL	Label Slowness Upper Limit - Monopole P&S Shear	240	US/F
SLL4	STC Slowness Lower Limit - Monopole P&S	40	US/F
SST4	STC Slowness Step - Monopole P&S	2	US/F
SSW4	STC Source Waveform - Monopole P&S	WF_SAM4	
STLL	Label Slowness Lower Limit - Monopole Stoneley	180	US/F
STUL	Label Slowness Upper Limit - Monopole Stoneley	780	US/F
SUL4	STC Slowness Upper Limit - Monopole P&S	240	US/F
SWD4	STC Slowness Width - Monopole P&S	10	US/F
TBF4	STC Time for Baseline Fill - Monopole P&S	300	US
TLL4	STC Time Lower Limit - Monopole P&S	150	US
TST4	STC Time Step - Monopole P&S	50	US
TUL4	STC Time Upper Limit - Monopole P&S	3660	US
TWD4	STC Time Width - Monopole P&S	1000	US
TWI4	STC Integration Time Window - Monopole P&S	500	US
TWSX	Transmitter Waveform Select X	0	
BHS	SGT-N: Scintillation Gamma-Ray - N Borehole Status		OPEN

Format: DSST\_P\_S\_VDL\_COLOR    Vertical Scale: 1:200    Graphics File Created: 10-Jun-2005 05:47

**OP System Version: 12C0-301**  
MCM

MEST-B	12C0-301	DTA-A	12C0-301
DSST-B	12C0-301	SGT-N	12C0-301
DTC-H	12C0-301		

**Output DLIS Files**

DEFAULT	FMS_DSI_033LUP	FN:14	PRODUCER	10-Jun-2005 05:46
---------	----------------	-------	----------	-------------------



**SECOND PASS**

MAXIS Field Log

**Input DLIS Files**

DEFAULT	FMS_DSI_034LUP	FN:15	PRODUCER	10-Jun-2005 07:01	1774.5 M	1530.1 M
---------	----------------	-------	----------	-------------------	----------	----------

**Output DLIS Files**

DEFAULT	FMS_DSI_048PUP	FN:29	PRODUCER	12-Jun-2005 09:45	1774.5 M	1530.6 M
---------	----------------	-------	----------	-------------------	----------	----------

**OP System Version: 12C0-301**

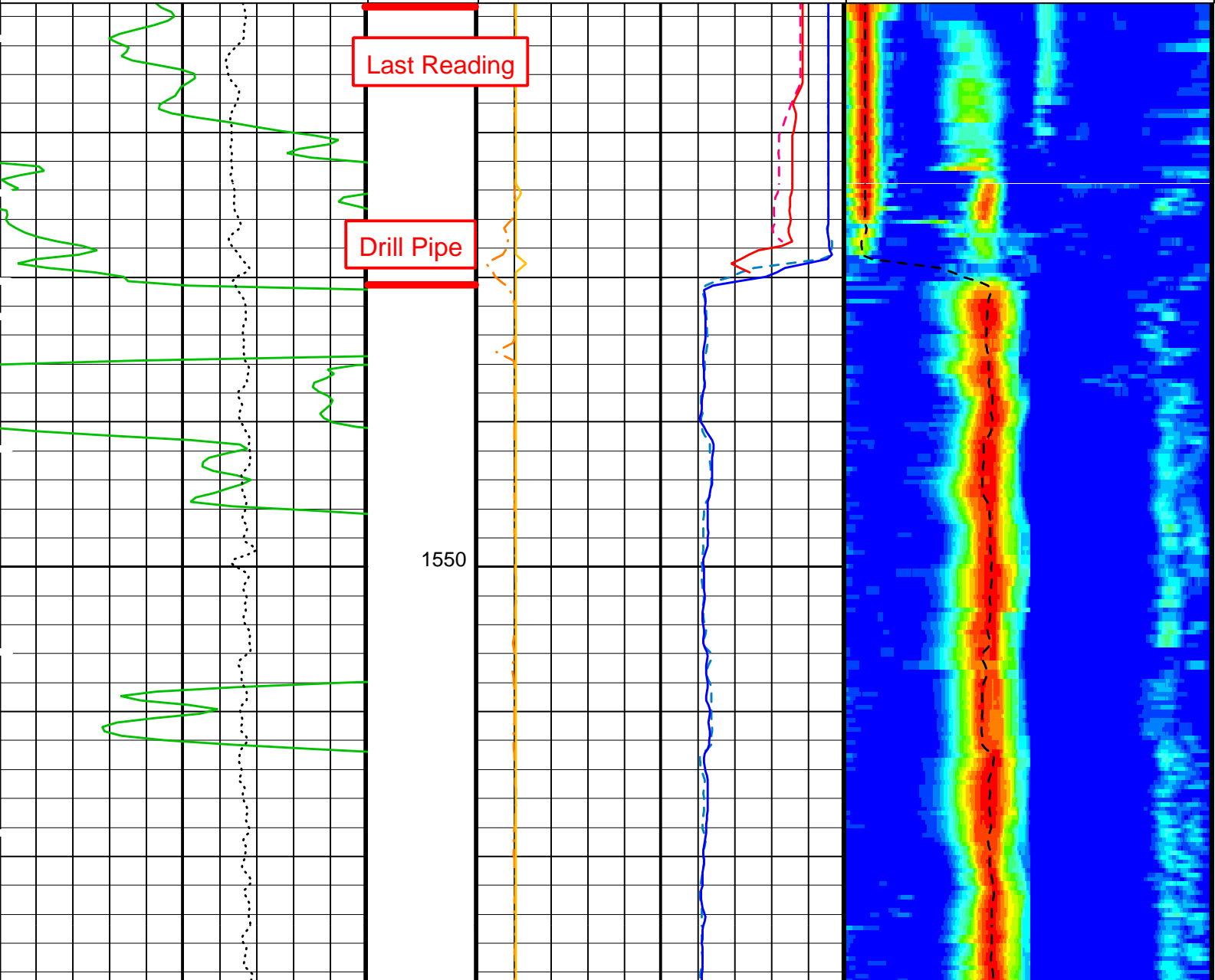
MEST-B 12C0-301  
DSST-B 12C0-301  
DTC-H 12C0-301

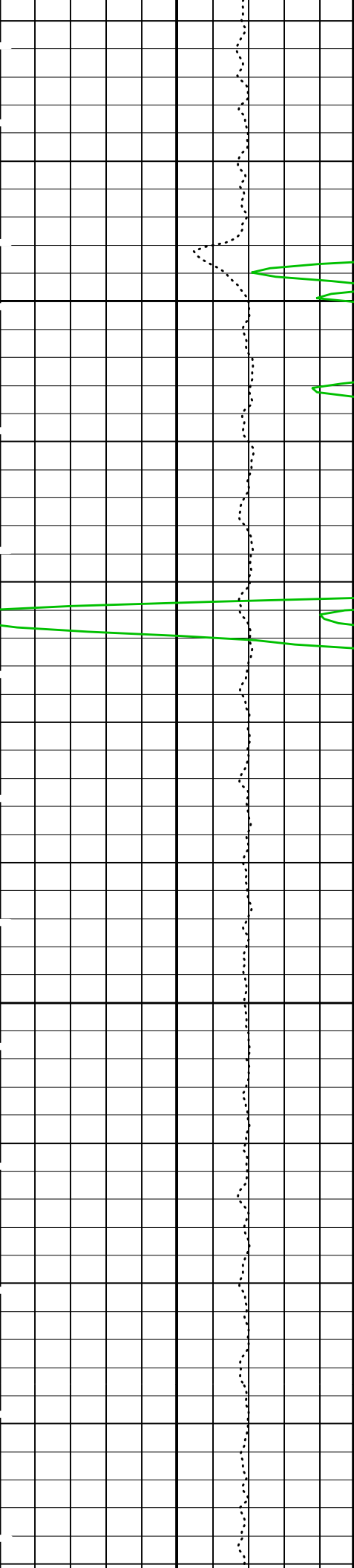
DTA-A 12C0-301  
SGT-N 12C0-301

PIP SUMMARY

Time Mark Every 60 S

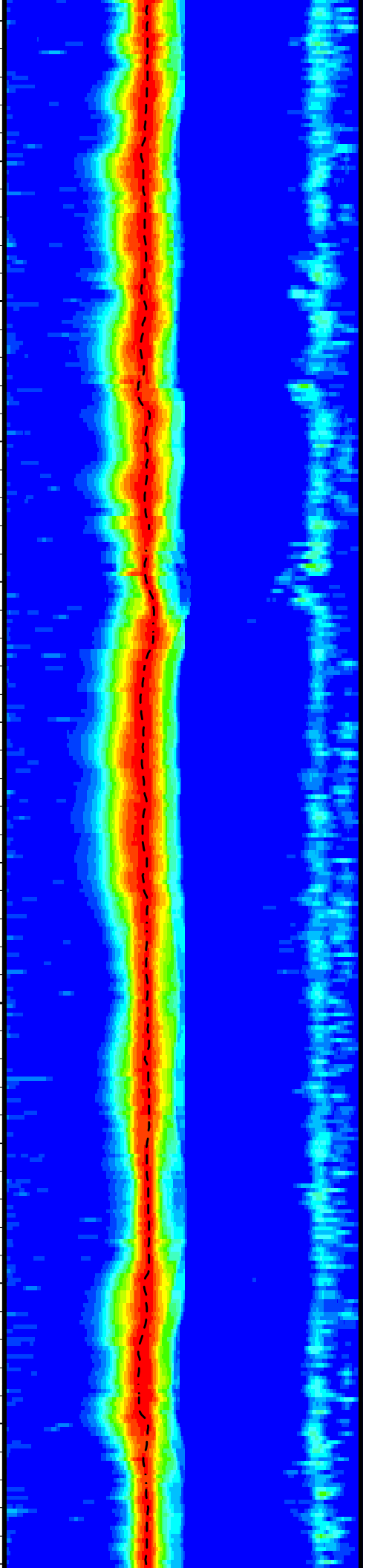
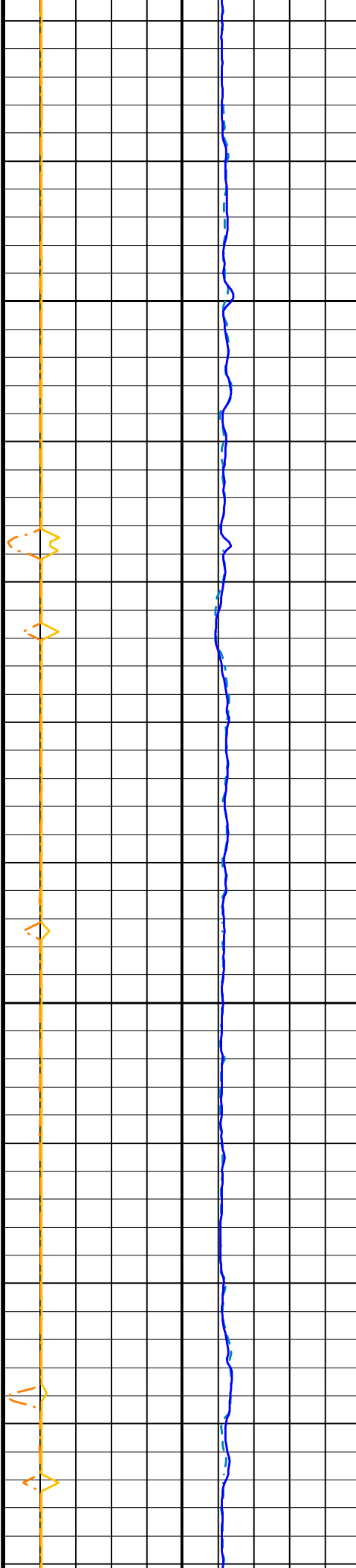
	<b>Delta-T Shear - P &amp; S (DT4S)</b> 440 (US/F) 40	
	<b>Delta-T Shear / RA - P &amp; S (DTRS)</b> 440 (US/F) 40	
	<b>Delta-T Comp - P &amp; S (DT4P)</b> 440 (US/F) 40	
	<b>Delta-T Comp / RA - P &amp; S (DTRP)</b> 440 (US/F) 40	
<b>Tension (TENS)</b> (LBF)	<b>Peak Coherence / RA - P &amp; S Shear (CHRS)</b> -1 (---) 9	<b>Min Amplitude Max</b> Rec.Array P&S Slow Proj. CVDL (SPR4) 40 (US/F) 440
<b>Gamma Ray (GR)</b> (GAPI)	<b>Peak Coherence / RA - P &amp; S Comp (CHRP)</b> 0 (---) 10	<b>Delta-T Comp / RA - P &amp; S (DTRP)</b> 40 (US/F) 440

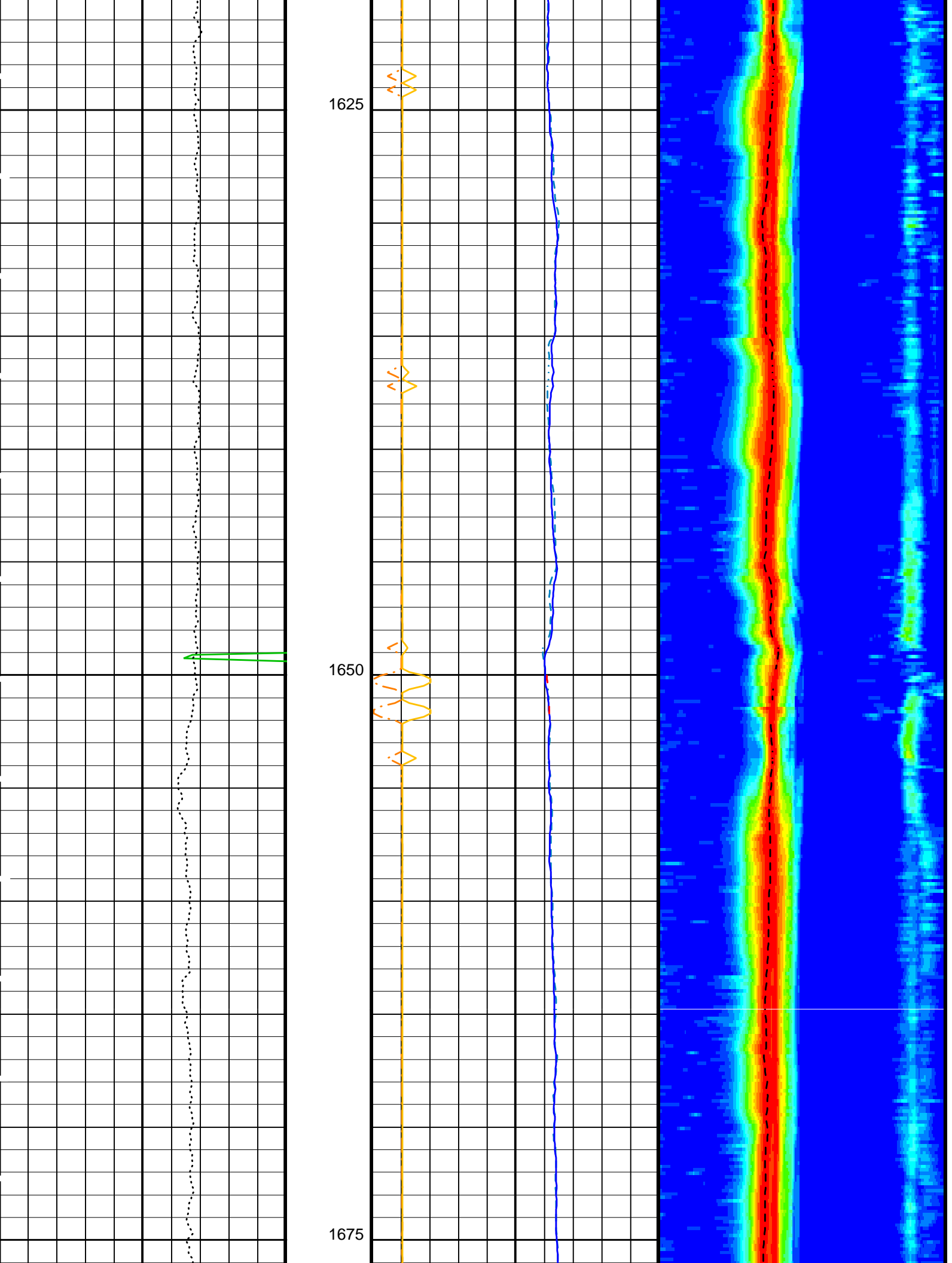


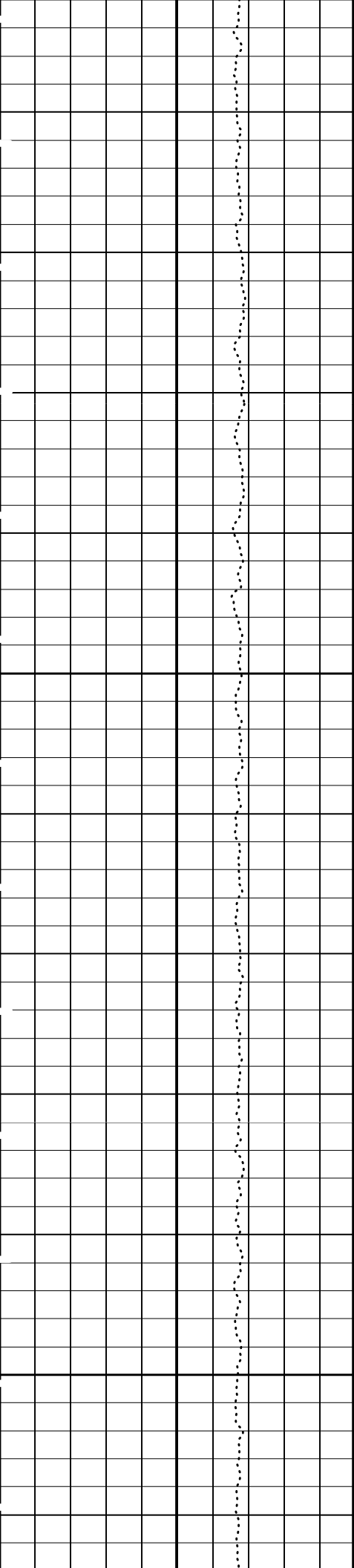


1575

1600

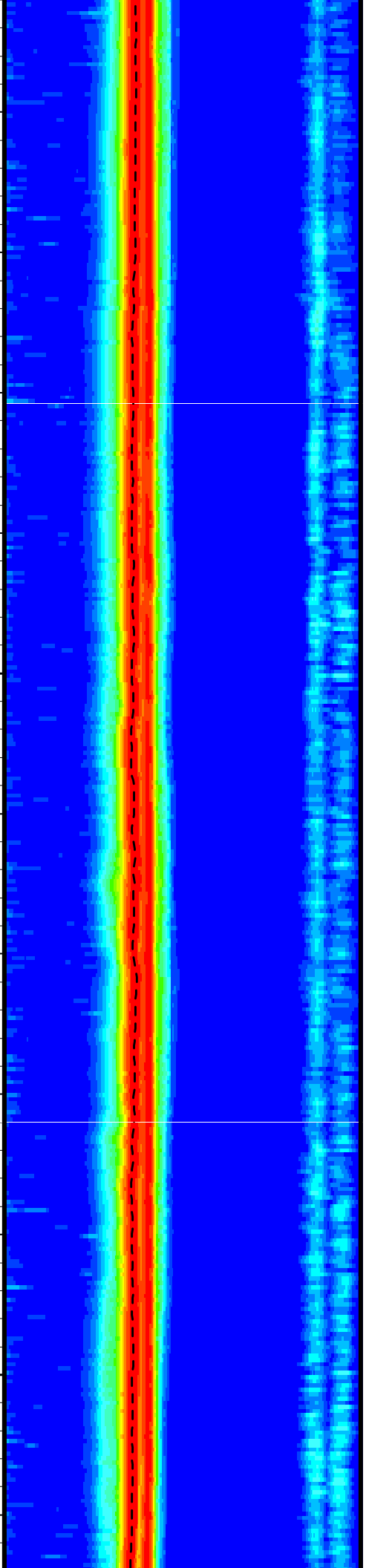
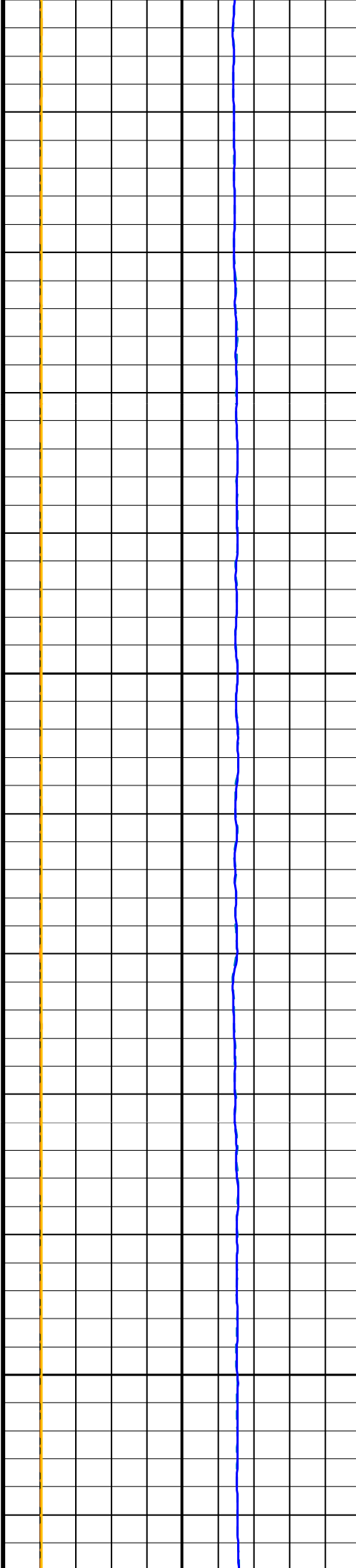


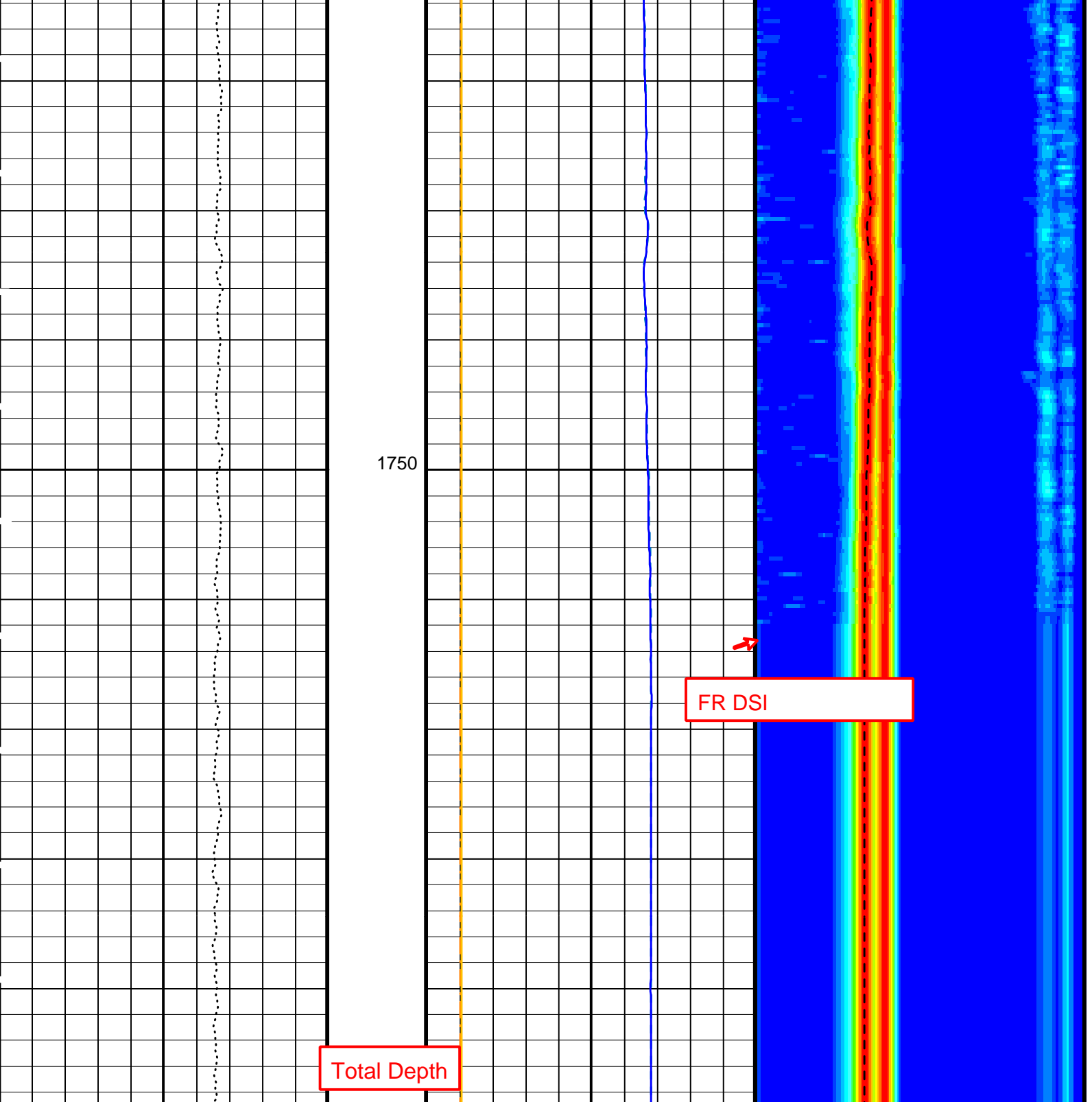




1700

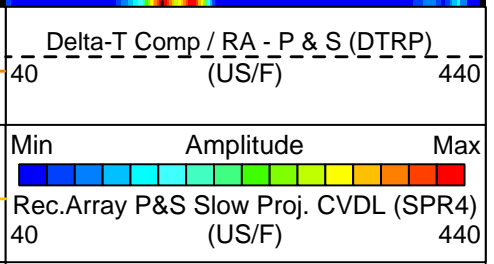
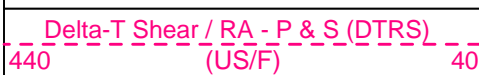
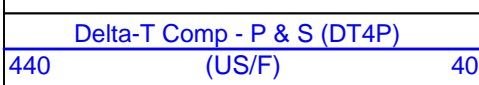
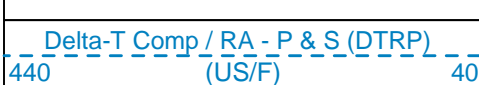
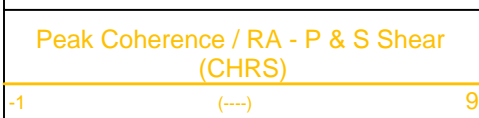
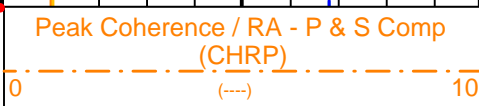
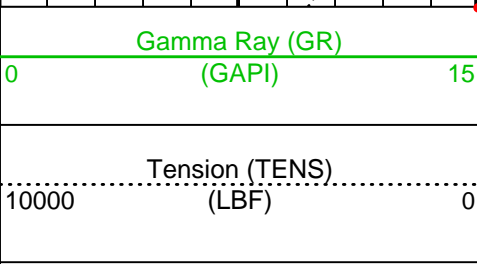
1725





Total Depth

FR DSI





PIP SUMMARY

▶ Time Mark Every 60 S

## Parameters

DLIS Name	Description	Value	
	DSST-B: Dipole Shear Imager - B		
BHS	Borehole Status	OPEN	
CASF	Label Casing Function - Monopole P&S	50	
COLL	Label Slowness Lower Limit - Monopole P&S Compressional	40	US/F
COUL	Label Slowness Upper Limit - Monopole P&S Compressional	240	US/F
DDE4	Digitizing Delay 4	0	US
DDEX	Digitizing Delay X	0	US
DSI4	Digitizer Sample Interval 4	10	US
DSIX	Digitizer Sample Interval X	40	US
DTF	Delta-T Fluid	189	US/F
DWC4	Digitizer Word Count 4	512	
DWCX	Digitizer Word Count X	512	
FILG	Label Fill Gap Control - Monopole P&S	COMP_SHEAR	
LFC	Label Formation Character - Monopole P&S	DYNAMIC	
MCS	Mean Casing Slowness	57	US/F
MTXG	Monopole Transmitter Geometry	186	IN
NWI4	Number Waveform Items 4	8	
NWIX	Number Waveform Items X	32	
RSMN	Label Shear/Compressional Minimum Ratio - Monopole P&S	1.4	
RSMX	Label Shear/Compressional Maximum Ratio - Monopole P&S	2.12	
RX1G	Receiver 1 Geometry	294	IN
RX2G	Receiver 2 Geometry	300	IN
RX3G	Receiver 3 Geometry	306	IN
RX4G	Receiver 4 Geometry	312	IN
RX5G	Receiver 5 Geometry	318	IN
RX6G	Receiver 6 Geometry	324	IN
RX7G	Receiver 7 Geometry	330	IN
RX8G	Receiver 8 Geometry	336	IN
SAM4	DSST Sonic Acquisition Mode 4 - High Frequency Monopole Mode for P&S	MFD_EVEN	
SAMX	DSST Sonic Acquisition Mode X - Both Dipoles or Monopole Mode for Expert	BCR	
SAS4	STC Sonic Array Status - Monopole P&S	255	
SBO4	STC Search Band Offset - Monopole P&S	500	US
SBR4	STC Baseline Removal - Monopole P&S	ON	
SBW4	STC Search Bandwidth - Monopole P&S	2000	US
SFC4	STC Formation Character - Monopole P&S	SELECTABLE	
SFM4	STC Filter - Monopole P&S	B3-12K	
SHLL	Label Slowness Lower Limit - Monopole P&S Shear	75	US/F
SHUL	Label Slowness Upper Limit - Monopole P&S Shear	240	US/F
SLL4	STC Slowness Lower Limit - Monopole P&S	40	US/F
SST4	STC Slowness Step - Monopole P&S	2	US/F
SSW4	STC Source Waveform - Monopole P&S	WF_SAM4	
STLL	Label Slowness Lower Limit - Monopole Stoneley	220	US/F
STUL	Label Slowness Upper Limit - Monopole Stoneley	1600	US/F
SUL4	STC Slowness Upper Limit - Monopole P&S	440	US/F
SWD4	STC Slowness Width - Monopole P&S	10	US/F
TBF4	STC Time for Baseline Fill - Monopole P&S	300	US
TLL4	STC Time Lower Limit - Monopole P&S	150	US
TST4	STC Time Step - Monopole P&S	50	US
TUL4	STC Time Upper Limit - Monopole P&S	5110	US
TWD4	STC Time Width - Monopole P&S	1000	US
TWI4	STC Integration Time Window - Monopole P&S	500	US
TWSX	Transmitter Waveform Select X	0	
	SGT-N: Scintillation Gamma-Ray - N		
BHS	Borehole Status	OPEN	
	System and Miscellaneous		
DO	Depth Offset for Playback	0.0	M
PP	Playback Processing	RECOMPUTE	

Format: DSST\_P\_S\_VDL\_COLOR

Vertical Scale: 1:200

Graphics File Created: 12-Jun-2005 09:45

### OP System Version: 12C0-301 MCM

MEST-B	12C0-301	DTA-A	12C0-301
DSST-B	12C0-301	SGT-N	12C0-301
DTC-H	12C0-301		

### Input DLIS Files


DEFAULT	FMS_DSI_034LUP	FN:15	PRODUCER	10-Jun-2005 07:01	1774.5 M	1530.1 M
<b>Output DLIS Files</b>						
DEFAULT	FMS_DSI_048PUP	FN:29	PRODUCER	12-Jun-2005 09:45		

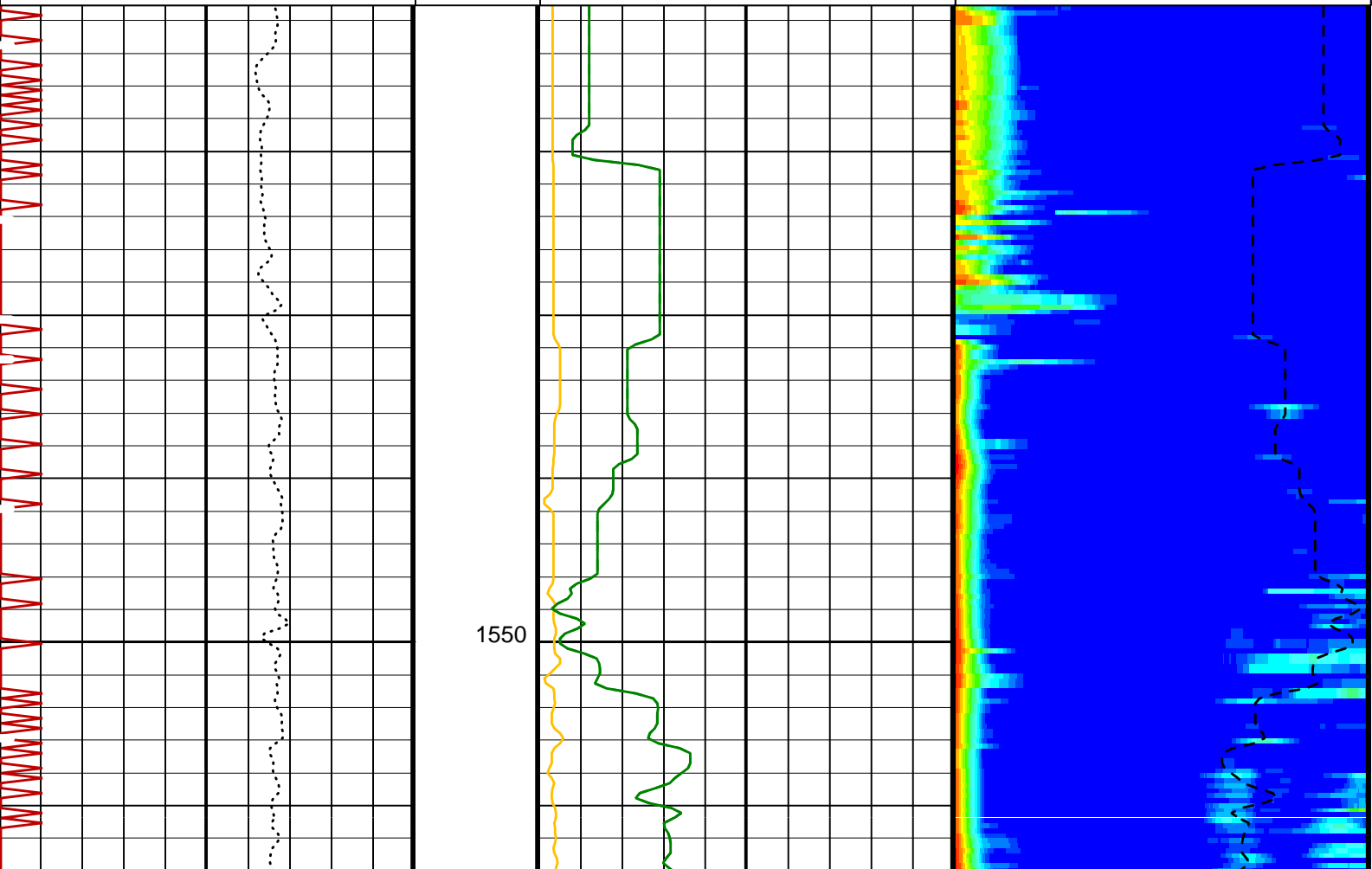
<b>Input DLIS Files</b>						
DEFAULT	FMS_DSI_034LUP	FN:15	PRODUCER	10-Jun-2005 07:01	1774.5 M	1530.1 M
<b>Output DLIS Files</b>						
DEFAULT	FMS_DSI_048PUP	FN:29	PRODUCER	12-Jun-2005 09:45	1774.5 M	1530.6 M

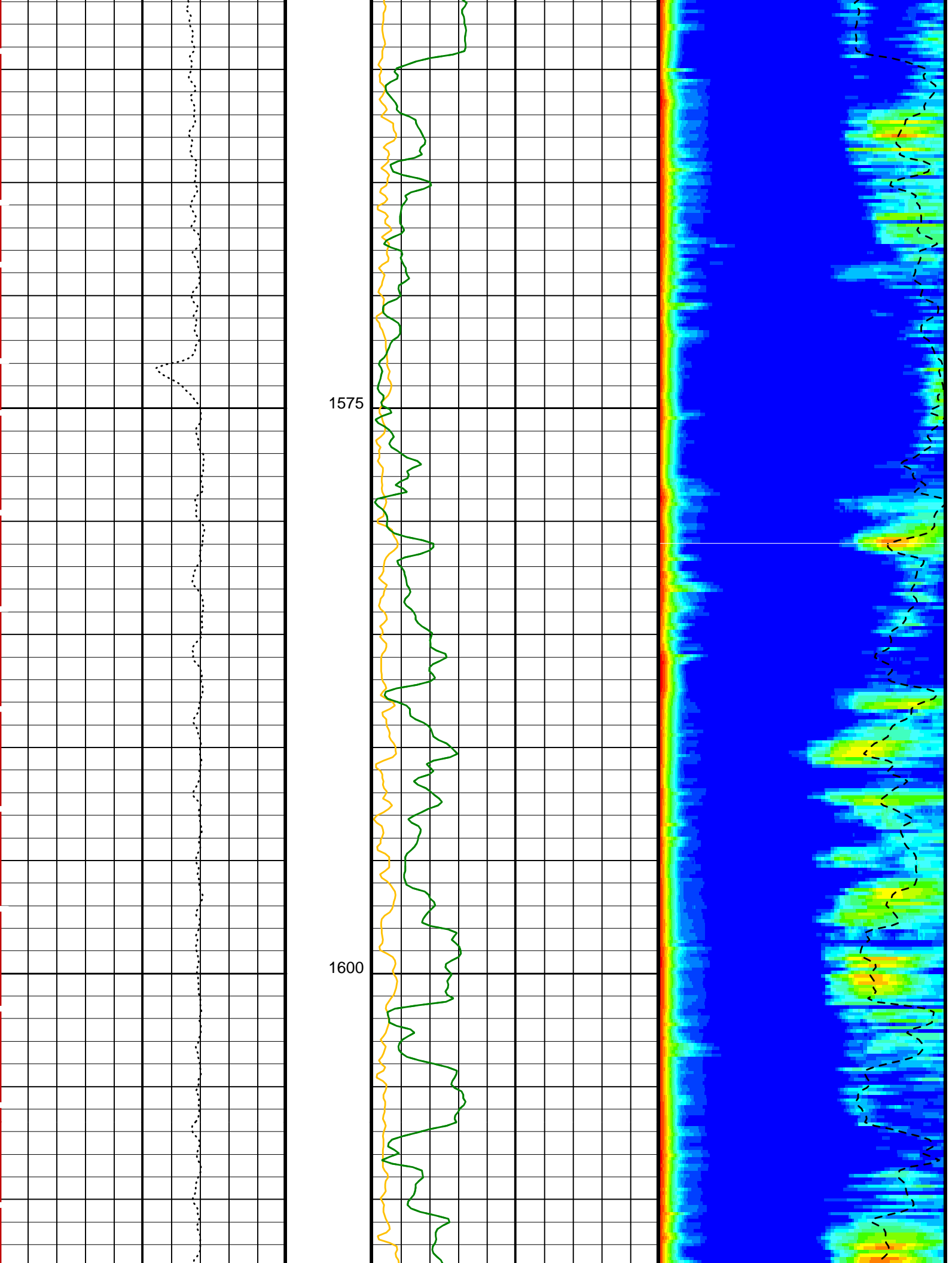
<b>OP System Version: 12C0-301</b>						
MCM						
MEST-B	12C0-301		DTA-A	12C0-301		
DSST-B	12C0-301		SGT-N	12C0-301		
DTC-H	12C0-301					

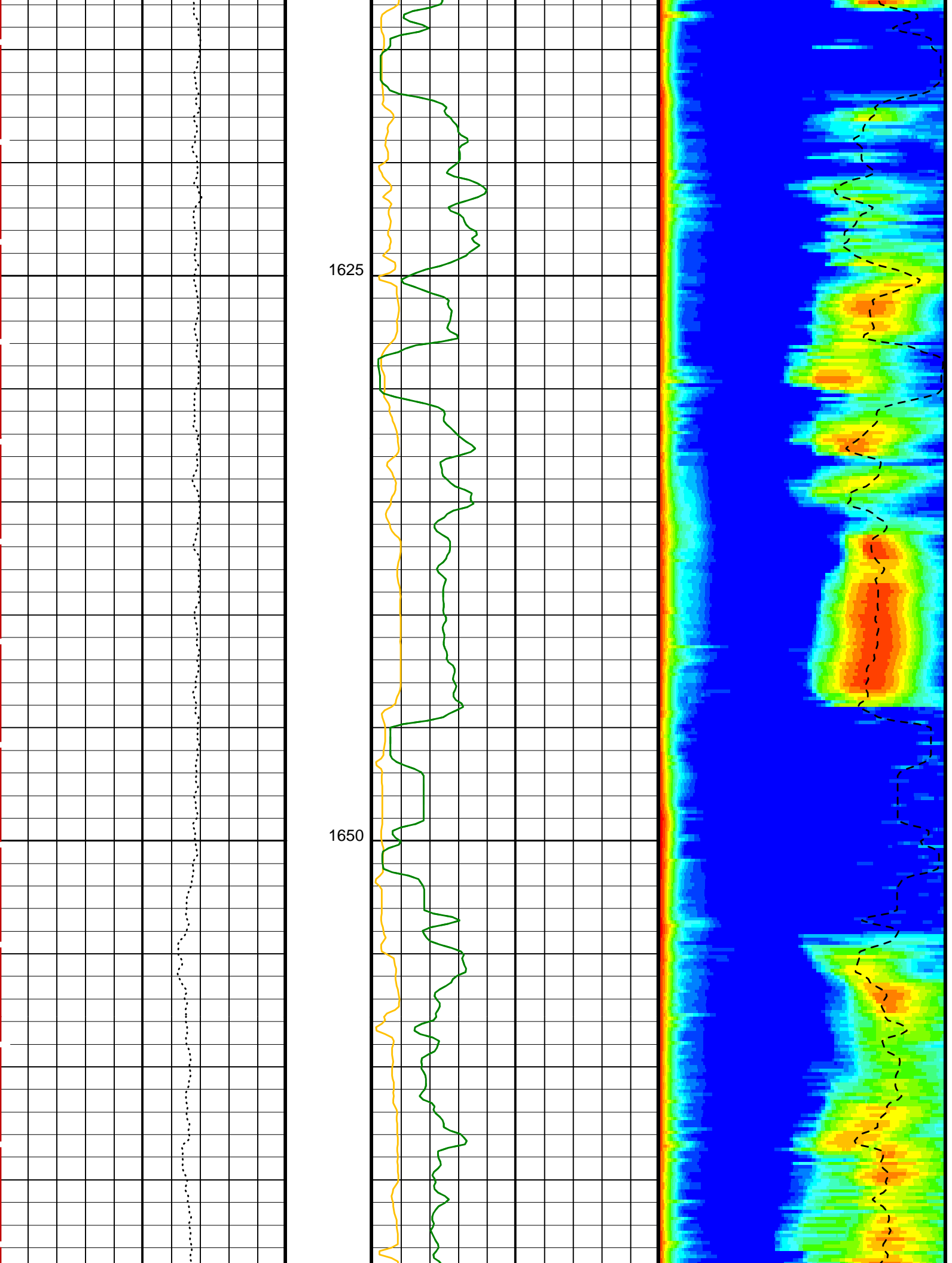
PIP SUMMARY

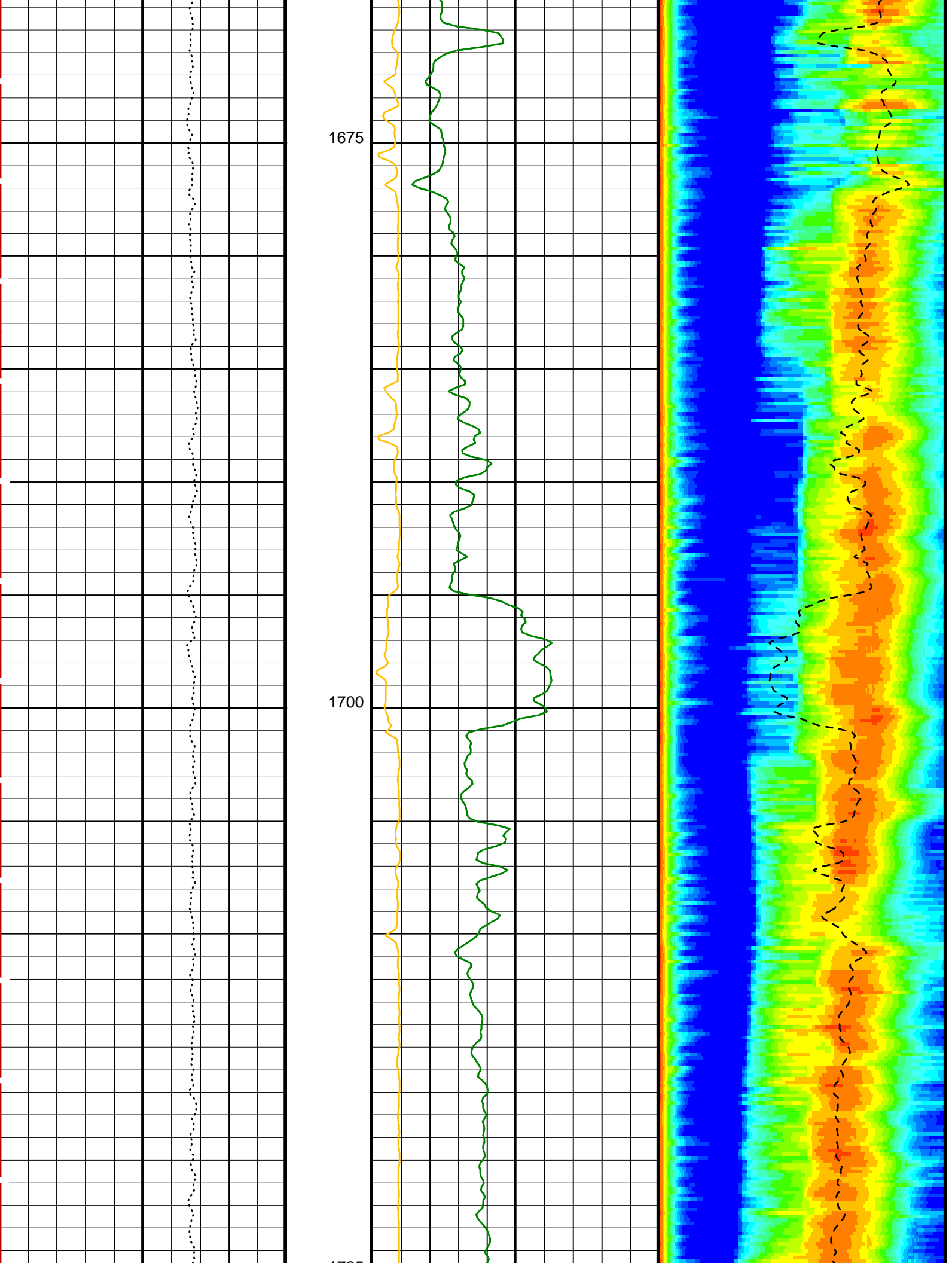
Time Mark Every 60 S

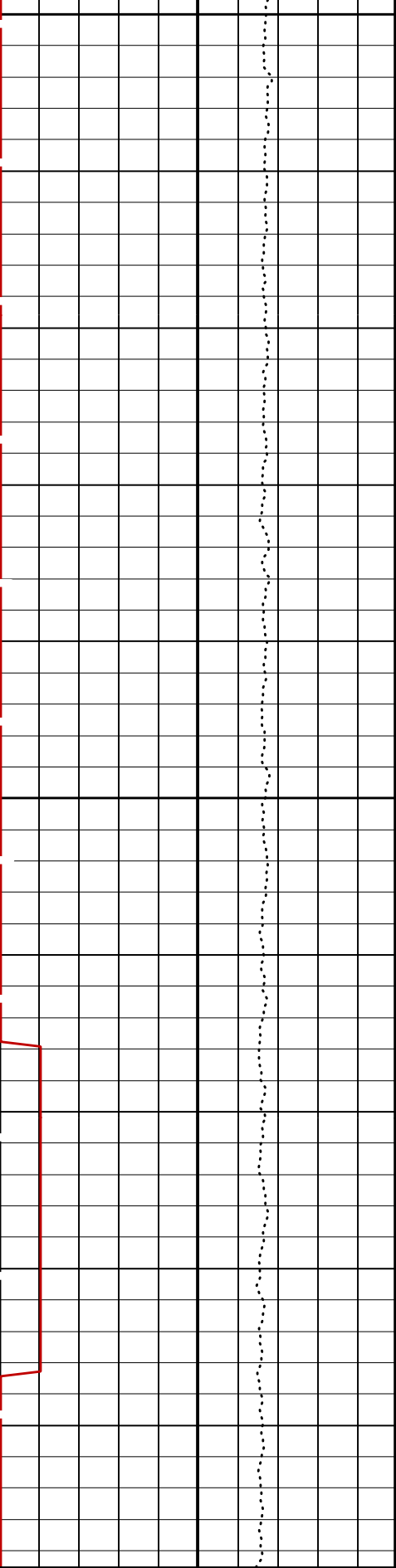
<p style="color: red;">Waveform Data Copy Indicator 3 - Monopole Stoneley (WCI3)</p> <p>0 (---) 10</p> <hr style="border-top: 1px dashed red;"/> <p style="text-align: center;">Tension (TENS) (LBF)</p> <p>10000 0</p>	<p style="color: green;">Delta-T Stoneley (DTST)</p> <p>1600 (US/F) 220</p>	<p>Min Amplitude Max</p>  <p>Rec.Array Stoneley Slow Proj. CVDL (SPR3) (US/F)</p> <p>220 1600</p>		
	<p style="color: green;">Delta-T Stoneley / RA (DT3R)</p> <p>1600 (US/F) 220</p>		<p style="color: yellow;">Peak Coherence / RA - Stoneley (CHR3)</p> <p>0 (---) 10</p>	<p>Delta-T Stoneley / RA (DT3R)</p> <p>220 (US/F) 1600</p>





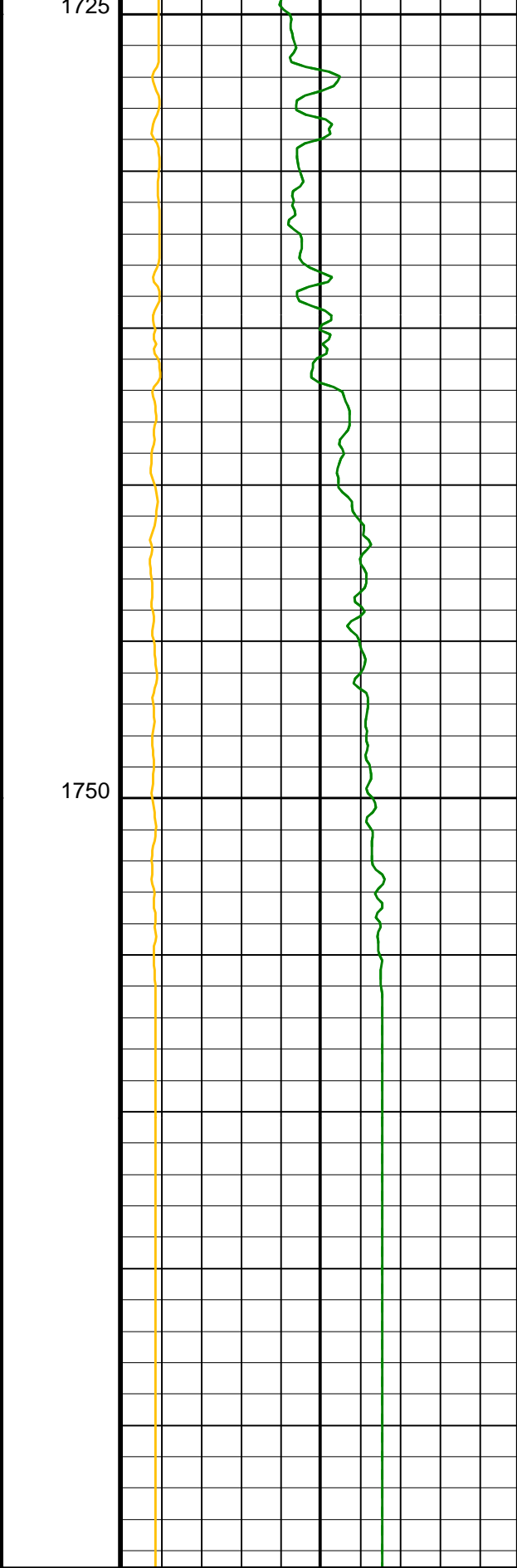






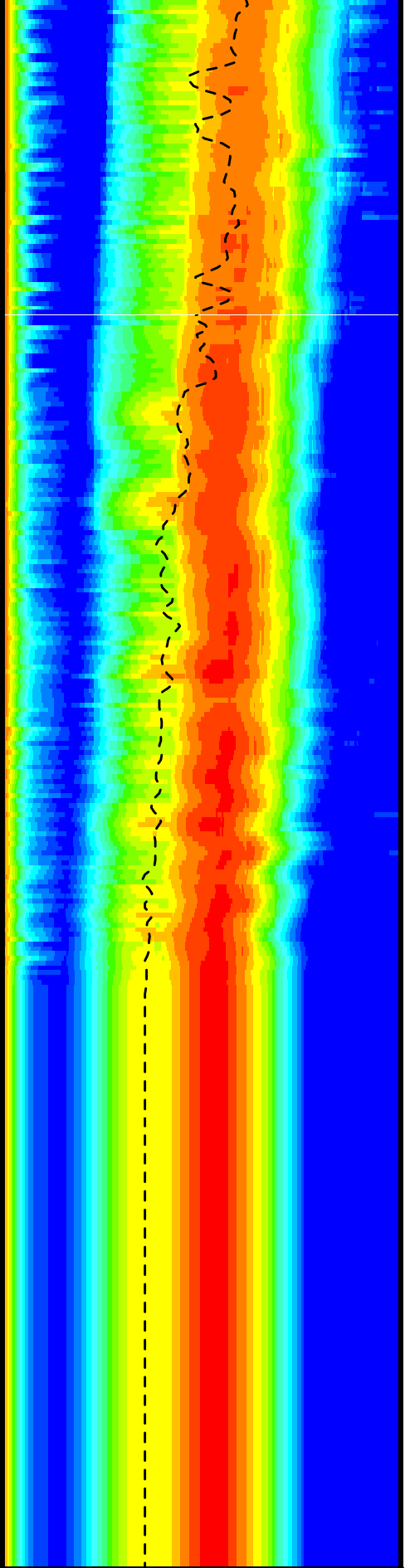
10000  
0

Waveform Data Copy Indicator 3 - Monopole Stoneley (WCI3)  
(---) 0 10



0 10

Delta-T Stoneley / RA (DT3R)  
(US/F) 1600 220



220 1600

Min Amplitude Max  
Rec.Array Stoneley Slow Proj. CVDL (SPR3)  
(US/F) 220 1600

PIP SUMMARY

Time Mark Every 60 S

Parameters

DLIS Name	Description	Value	
DSST-B: Dipole Shear Imager - B			
DDE3	Digitizing Delay 3	0	US
DDEX	Digitizing Delay X	0	US
DSI3	Digitizer Sample Interval 3	40	US
DSIX	Digitizer Sample Interval X	40	US
DTCS	Compressional Delta-T Source for DTCO Channel	PS_COMP	
DWC3	Digitizer Word Count 3	512	
DWCX	Digitizer Word Count X	512	
MTXG	Monopole Transmitter Geometry	186	IN
NWI3	Number Waveform Items 3	8	
NWIX	Number Waveform Items X	32	
RX1G	Receiver 1 Geometry	294	IN
RX2G	Receiver 2 Geometry	300	IN
RX3G	Receiver 3 Geometry	306	IN
RX4G	Receiver 4 Geometry	312	IN
RX5G	Receiver 5 Geometry	318	IN
RX6G	Receiver 6 Geometry	324	IN
RX7G	Receiver 7 Geometry	330	IN
RX8G	Receiver 8 Geometry	336	IN
SAM3	DSST Sonic Acquisition Mode 3 - Low Frequency Monopole Mode for Stoneley	ODD	
SAMX	DSST Sonic Acquisition Mode X - Both Dipoles or Monopole Mode for Expert	BCR	
SAS3	STC Sonic Array Status - Monopole Stoneley	255	
SBO3	STC Search Band Offset - Monopole Stoneley	2000	US
SBW3	STC Search Bandwidth - Monopole Stoneley	6000	US
SFC3	STC Formation Character - Monopole Stoneley	SELECTABLE	
SFM3	STC Filter - Monopole Stoneley	B.5-1.5K	
SLL3	STC Slowness Lower Limit - Monopole Stoneley	220	US/F
SST3	STC Slowness Step - Monopole Stoneley	4	US/F
SSW3	STC Source Waveform - Monopole Stoneley	WF_SAM3	
STLL	Label Slowness Lower Limit - Monopole Stoneley	220	US/F
STUL	Label Slowness Upper Limit - Monopole Stoneley	1600	US/F
SUL3	STC Slowness Upper Limit - Monopole Stoneley	1600	US/F
SWD3	STC Slowness Width - Monopole Stoneley	40	US/F
TBF3	STC Time for Baseline Fill - Monopole Stoneley	0	US
TLL3	STC Time Lower Limit - Monopole Stoneley	980	US
TST3	STC Time Step - Monopole Stoneley	200	US
TUL3	STC Time Upper Limit - Monopole Stoneley	19400	US
TWD3	STC Time Width - Monopole Stoneley	2000	US
TWI3	STC Integration Time Window - Monopole Stoneley	1600	US
TWSX	Transmitter Waveform Select X	0	
WFM3	Waveform Mode 3	W1	
System and Miscellaneous			
DO	Depth Offset for Playback	0.0	M
PP	Playback Processing	RECOMPUTE	

Format: DSST\_STONELEY\_VDL\_COLOR    Vertical Scale: 1:200    Graphics File Created: 12-Jun-2005 09:45

OP System Version: 12C0-301  
MCM

MEST-B	12C0-301	DTA-A	12C0-301
DSST-B	12C0-301	SGT-N	12C0-301
DTC-H	12C0-301		

Input DLIS Files

DEFAULT	FMS_DSI_034LUP	FN:15	PRODUCER	10-Jun-2005 07:01	1774.5 M	1530.1 M
---------	----------------	-------	----------	-------------------	----------	----------

Output DLIS Files

DEFAULT	FMS_DSI_048PUP	FN:29	PRODUCER	12-Jun-2005 09:45
---------	----------------	-------	----------	-------------------

Input DLIS Files

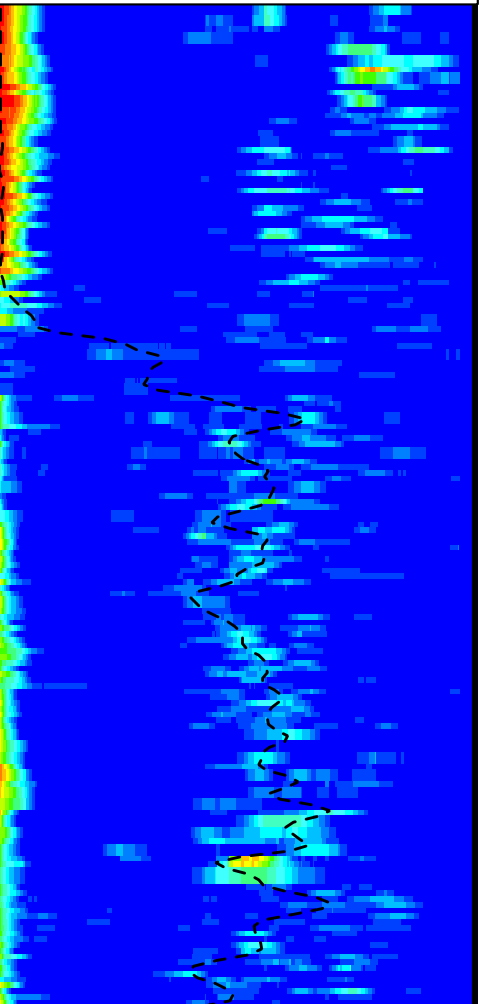
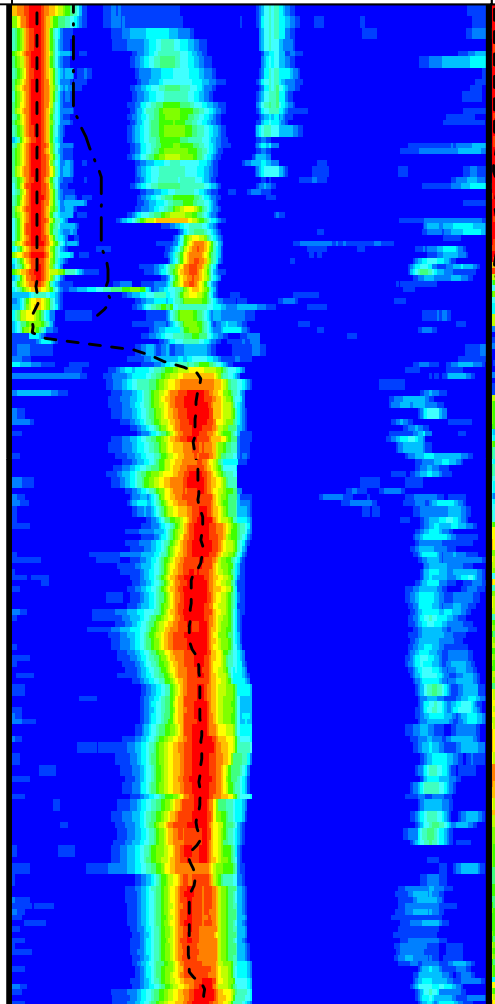
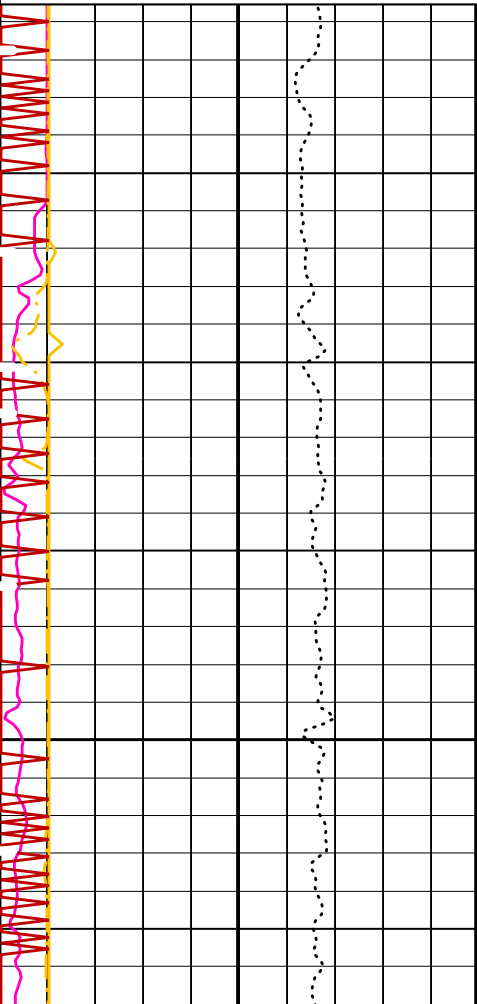
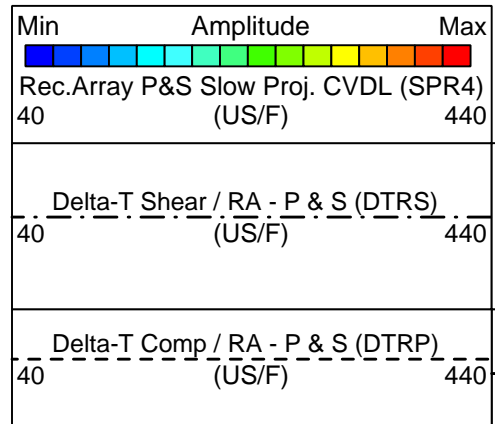
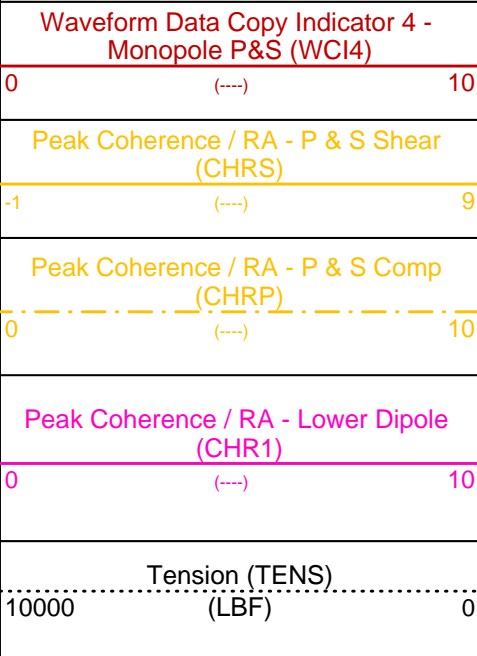
## Output DLIS Files

### OP System Version: 12C0-301 MCM

MEST-B	12C0-301	DTA-A	12C0-301
DSST-B	12C0-301	SGT-N	12C0-301
DTC-H	12C0-301		

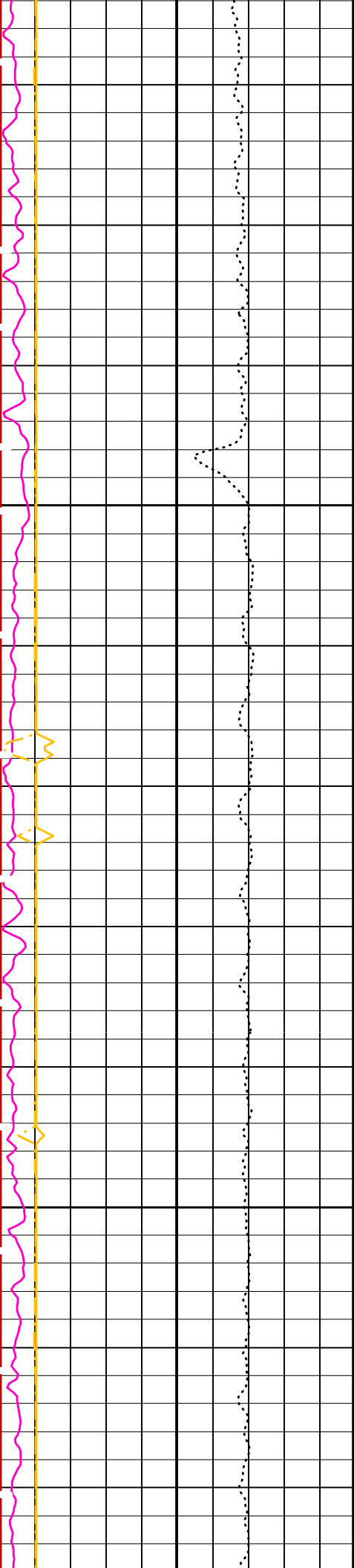
#### PIP SUMMARY

Time Mark Every 60 S



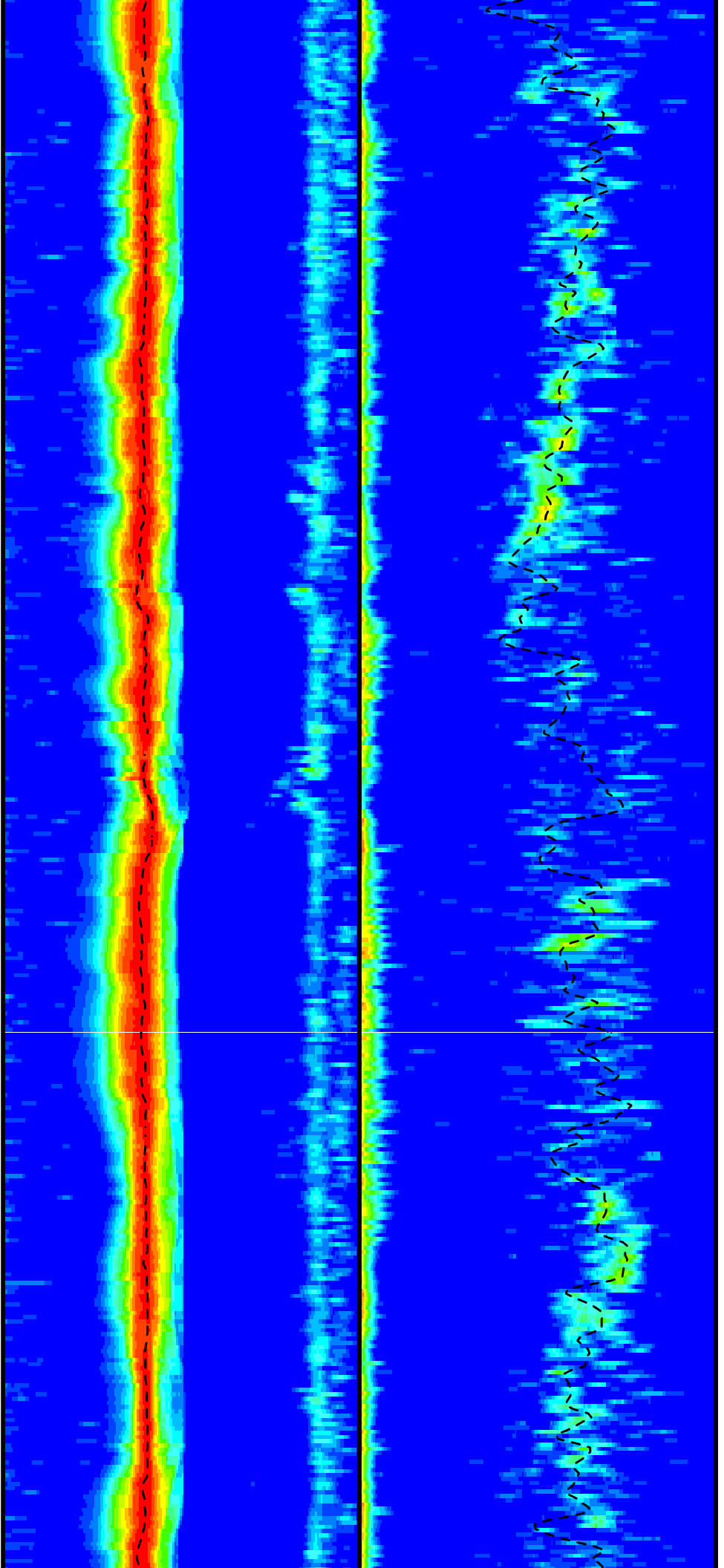
1550

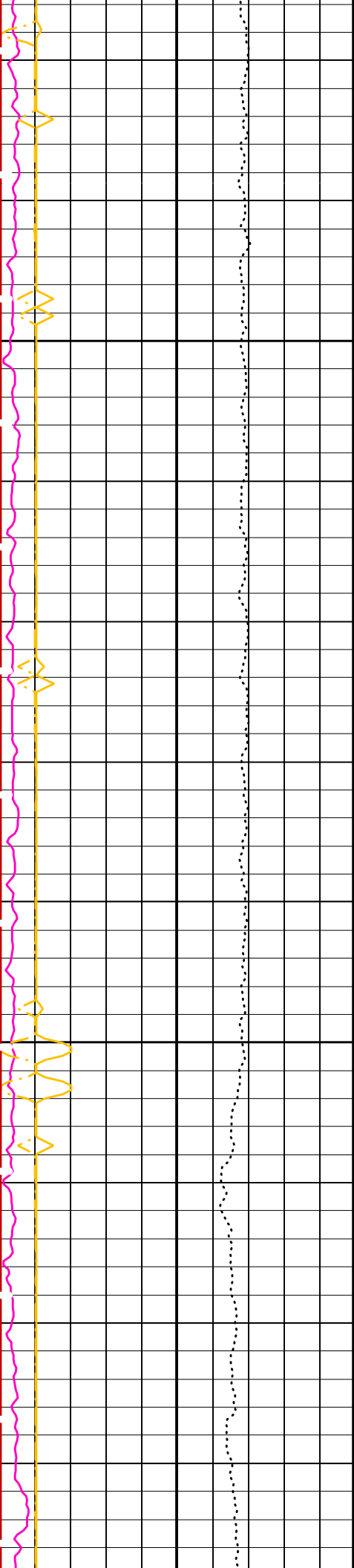




1575

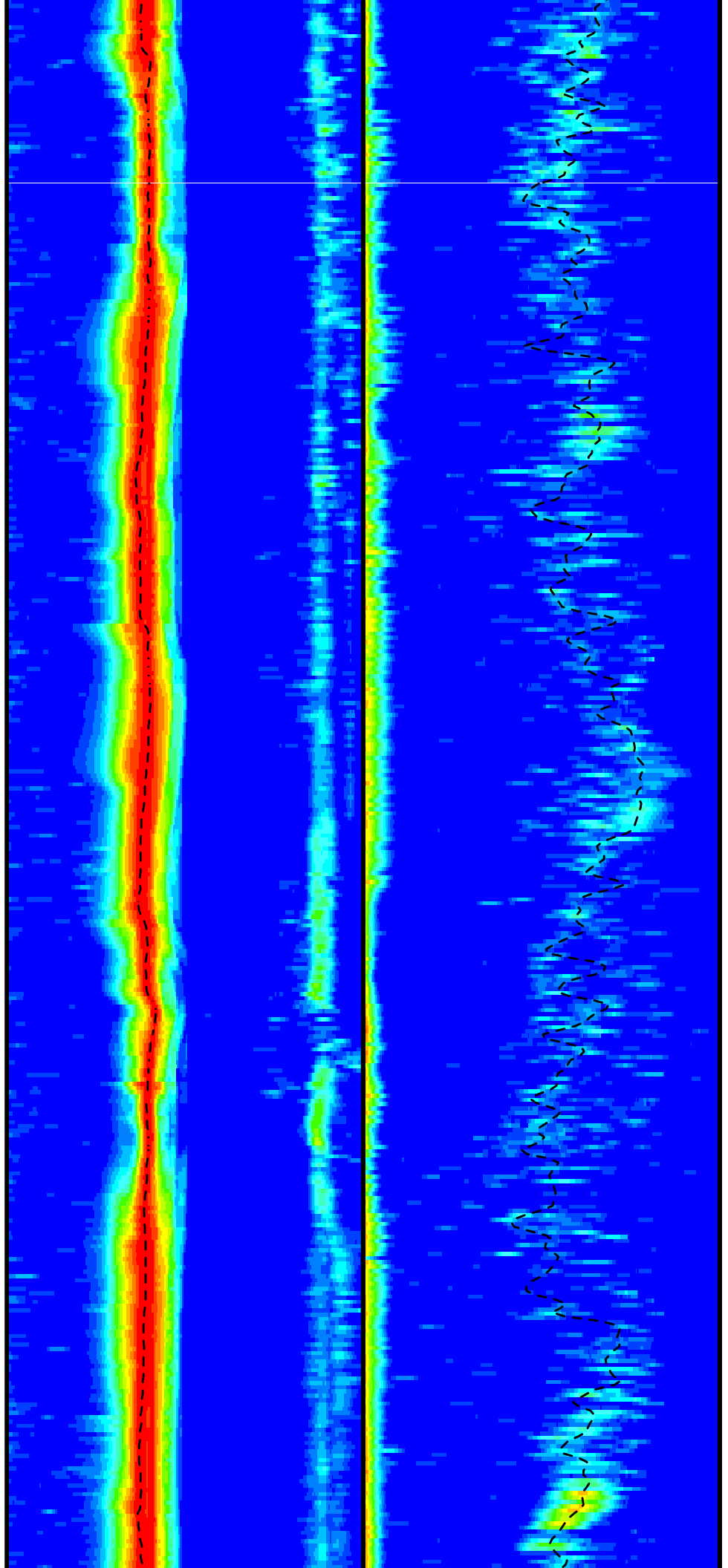
1600

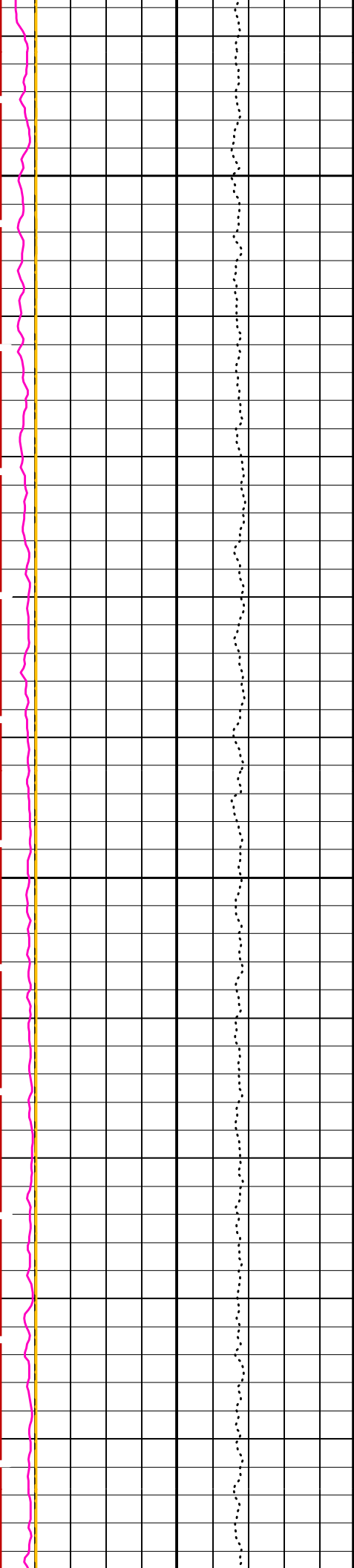




1625

1650

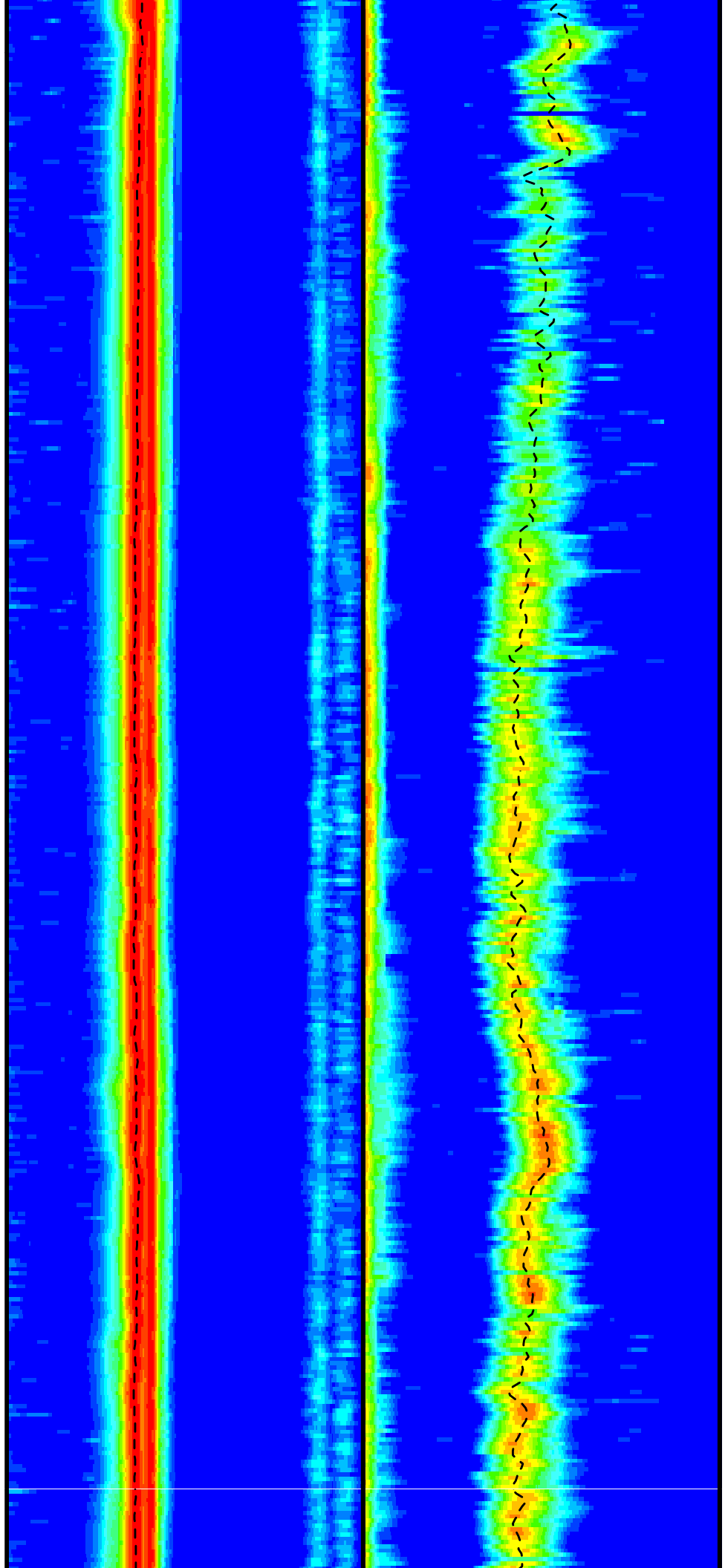


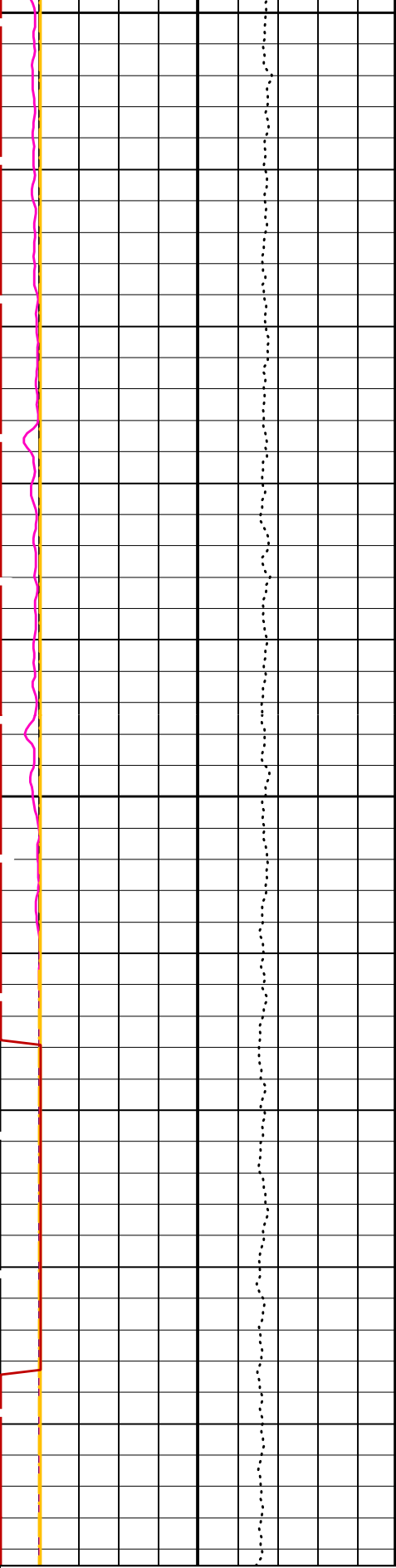


1675

1700

1705





1725

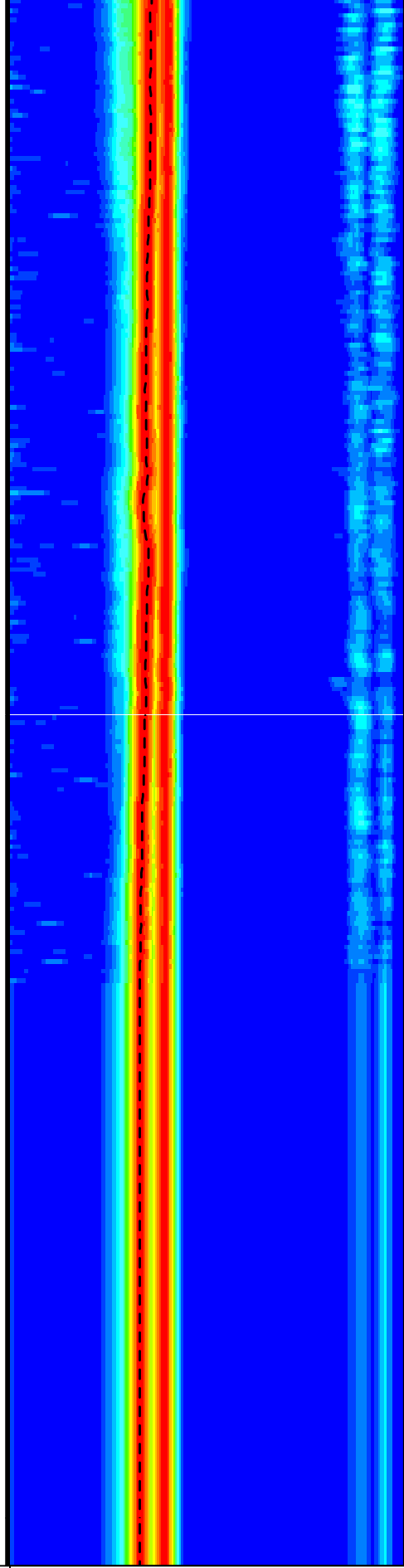
1750

Tension (TENS)  
(LBF)

10000 0

Peak Coherence / RA - Lower Dipole  
(CHR1)

0 10

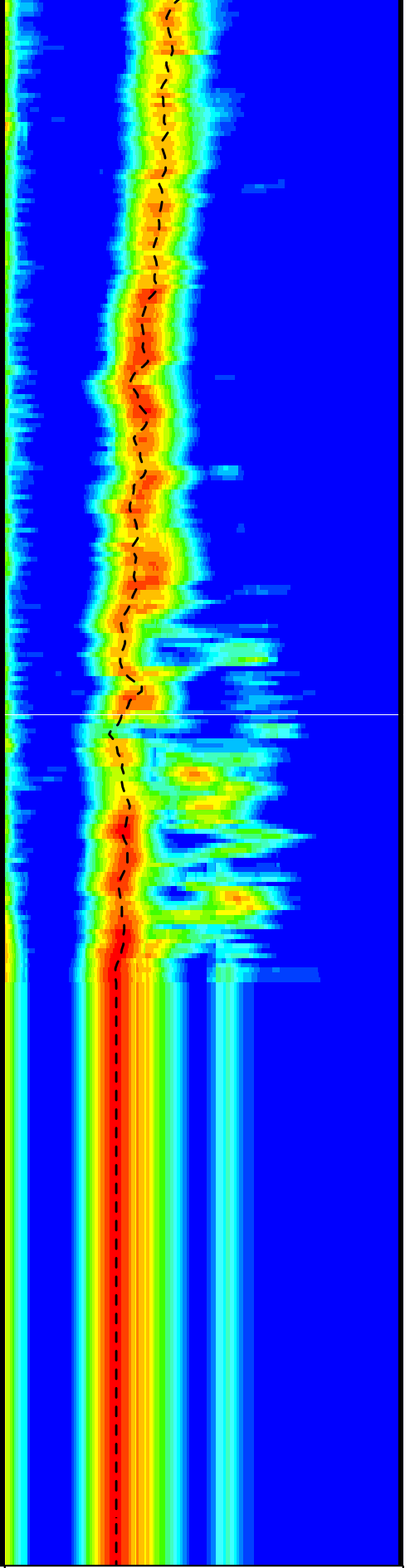


Delta-T Comp / RA - P & S (DTRP)  
(US/F)

40 440

Delta-T Shear / RA - P & S (DTRS)  
(US/F)

40 440



Delta-T Shear / RA - Lower Dipole  
(DT1R)  
(US/F)

220 1600

Min Amplitude Max  
Rec.Array L.Dipole Slow Proj. CVDL  
(SR1)



SS14	STC Slowness Step - Monopole P&S	2	US/F
SSW1	STC Source Waveform - Lower Dipole	WF_SAM4	
SSW4	STC Source Waveform - Monopole P&S		
STLL	Label Slowness Lower Limit - Monopole Stoneley	220	US/F
STUL	Label Slowness Upper Limit - Monopole Stoneley	1600	US/F
SUL1	STC Slowness Upper Limit - Lower Dipole	1600	US/F
SUL4	STC Slowness Upper Limit - Monopole P&S	440	US/F
SWD1	STC Slowness Width - Lower Dipole	40	US/F
SWD4	STC Slowness Width - Monopole P&S	10	US/F
TBF1	STC Time for Baseline Fill - Lower Dipole	0	US
TBF4	STC Time for Baseline Fill - Monopole P&S	300	US
TLL1	STC Time Lower Limit - Lower Dipole	1530	US
TLL4	STC Time Lower Limit - Monopole P&S	150	US
TST1	STC Time Step - Lower Dipole	200	US
TST4	STC Time Step - Monopole P&S	50	US
TUL1	STC Time Upper Limit - Lower Dipole	20440	US
TUL4	STC Time Upper Limit - Monopole P&S	5110	US
TWD1	STC Time Width - Lower Dipole	2000	US
TWD4	STC Time Width - Monopole P&S	1000	US
TWI1	STC Integration Time Window - Lower Dipole	1600	US
TWI4	STC Integration Time Window - Monopole P&S	500	US
TWSX	Transmitter Waveform Select X	0	
WFM4	Waveform Mode 4	W1	
BHS	SGT-N: Scintillation Gamma-Ray - N Borehole Status	OPEN	
DO	System and Miscellaneous Depth Offset for Playback	0.0	M
PP	Playback Processing	RECOMPUTE	

Format: DSST\_P\_S\_LOWER\_VDL\_COLOR    Vertical Scale: 1:200    Graphics File Created: 12-Jun-2005 09:45

## OP System Version: 12C0-301

MCM

MEST-B	12C0-301	DTA-A	12C0-301
DSST-B	12C0-301	SGT-N	12C0-301
DTC-H	12C0-301		

## Input DLIS Files

DEFAULT	FMS_DSI_034LUP	FN:15	PRODUCER	10-Jun-2005 07:01	1774.5 M	1530.1 M
---------	----------------	-------	----------	-------------------	----------	----------

## Output DLIS Files

DEFAULT	FMS_DSI_048PUP	FN:29	PRODUCER	12-Jun-2005 09:45
---------	----------------	-------	----------	-------------------

Company: Lamont Doherty

**Schlumberger**

Well: IODP EXP 308 Site 1320A

Field: Brazos Trinity Basin

Country: USA

Ocean: Gulf Of Mexico

Dipole Sonic-GR