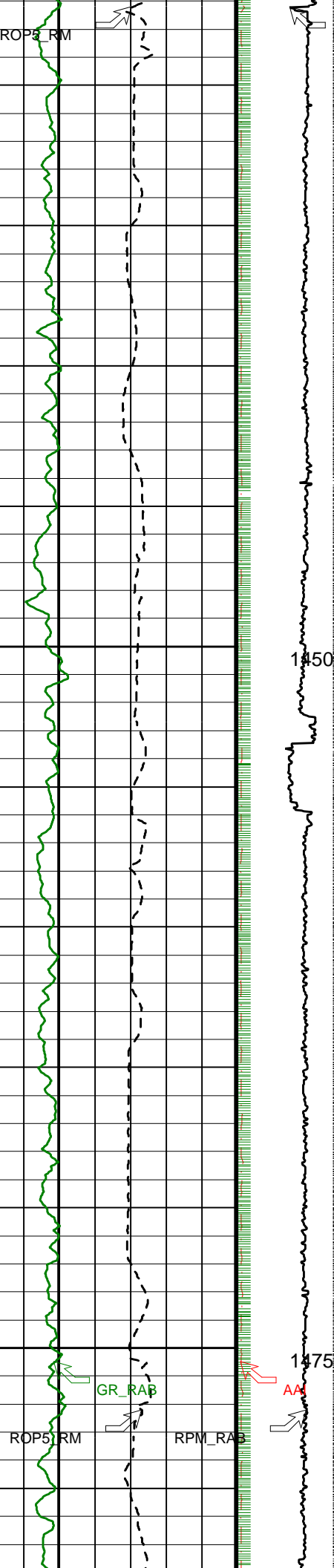


ROP5_RM

RPM_RAB



1450

1475

GR_RAB

AA

ROP5_RM

RPM_RAB



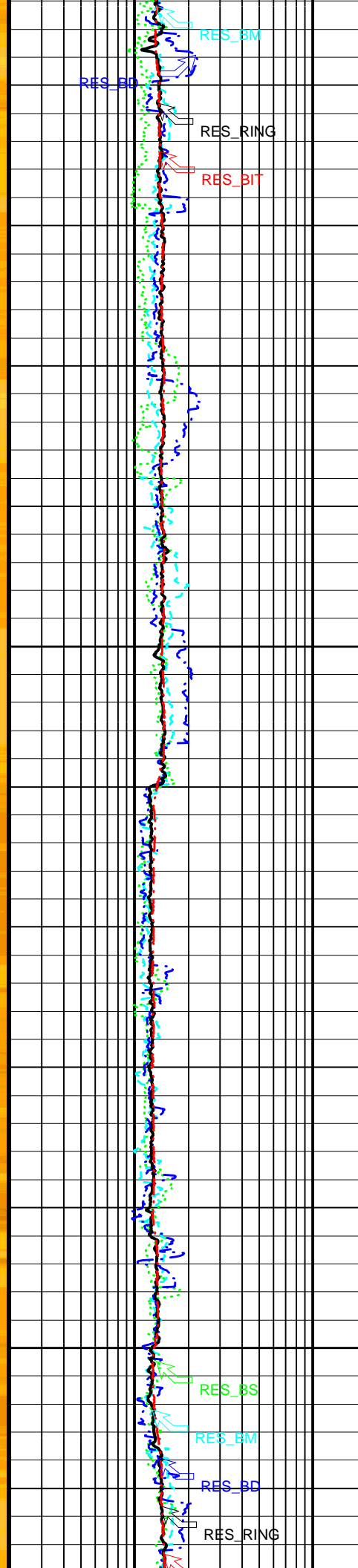
RES_BD

RES_3M

RES_RING

RES_BIT

RES_BD



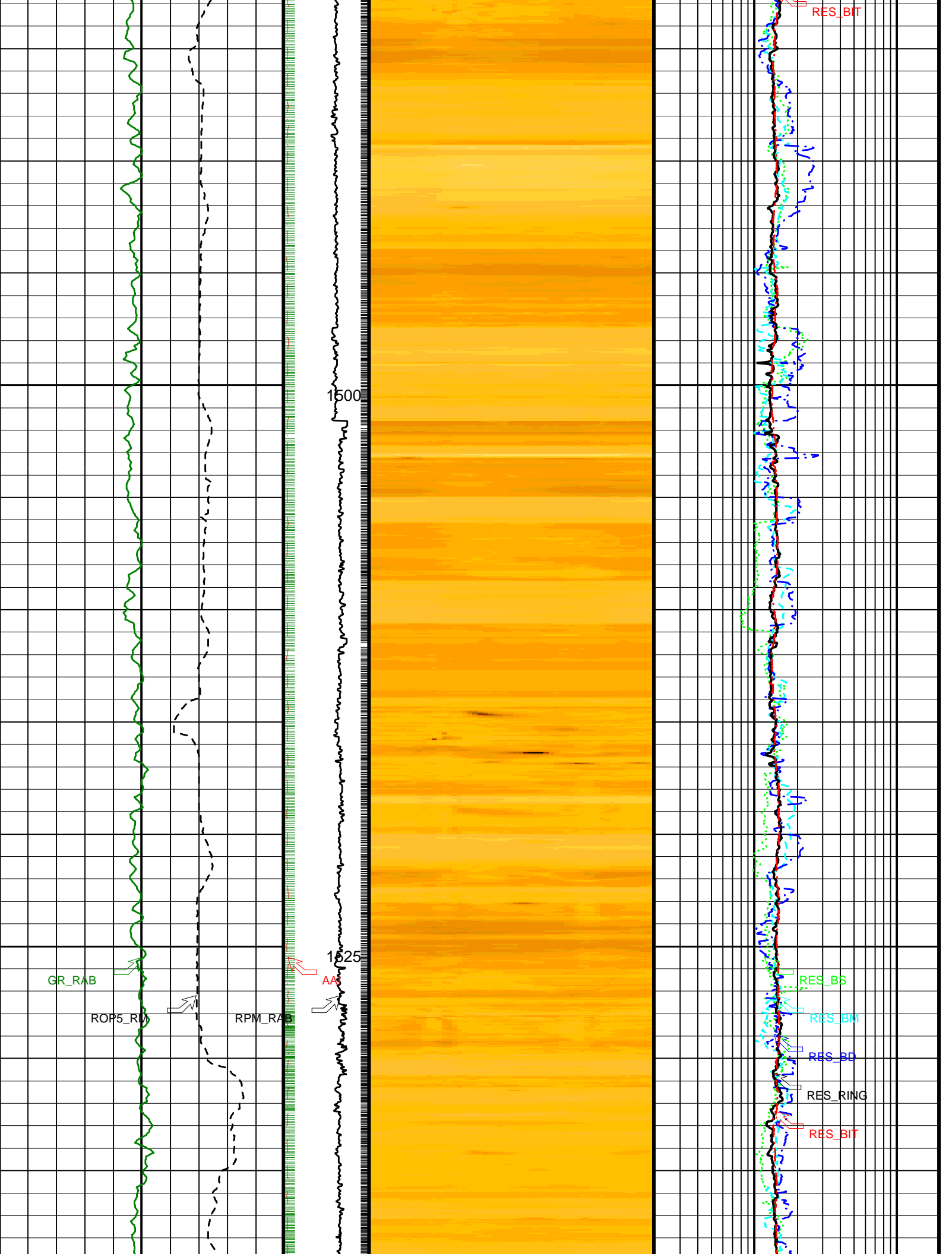
RES_BS

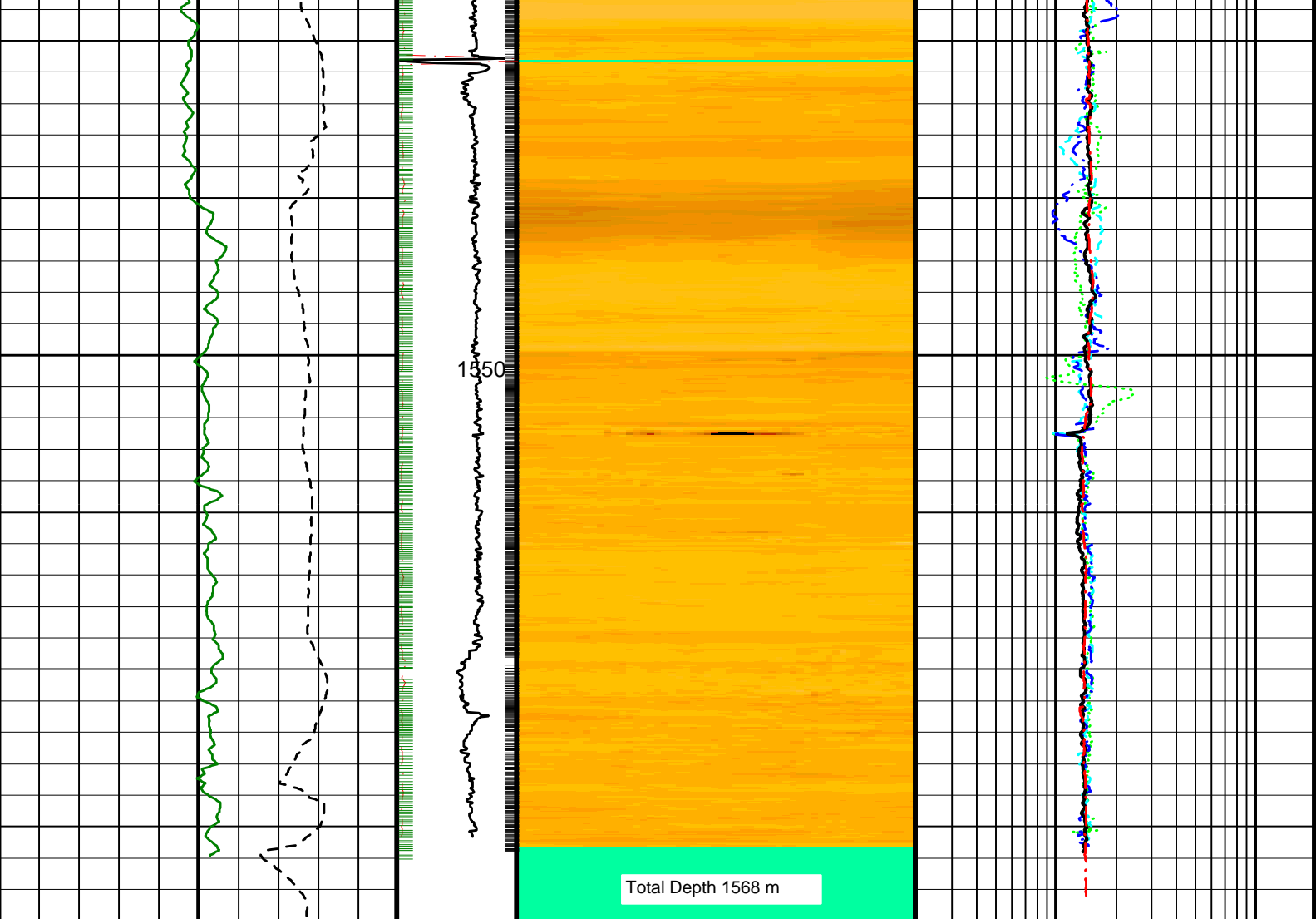
RES_EM

RES_BD

RES_RING







<p>RAB Gamma Ray (GR_RAB) (GAPI)</p> <p>0 150</p>	<p>Angular Acceleration Indicator (AAI) (---)</p> <p>0 200</p>	<p>Deep Button Image (R3IM) (OHMM)</p> <p>Absent 0.611 0.626 0.663 0.748 0.970 1.414 2.154 3.190 4.448 6.446</p>	<p>Shallow Button Resistivity (RES_BS) (OHMM)</p> <p>0.2 20</p>
<p>ROP: 5 Feet Average (ROP5_RM) (M/HR)</p> <p>100 0</p>	<p>RAB Rotational Speed (RPM_RAB) (RPM)</p> <p>0 100</p>		<p>Medium Button Resistivity (RES_BM) (OHMM)</p> <p>0.2 20</p>
			<p>Deep Button Resistivity (RES_BD) (OHMM)</p> <p>0.2 20</p>
			<p>Bit Resistivity (RES_BIT) (OHMM)</p> <p>0.2 20</p>
			<p>Ring Resistivity (RES_RING) (OHMM)</p> <p>0.2 20</p>

PIP SUMMARY

- ┆ Ring Samples
- ┆ Gamma Ray Samples

IDEAL Version: ID10_0C_04
IDF

GVR Dynamic Image

IDEAL Version: ID10_0C_04
IDF

Format: GEOVIS_RES_DYN_IMAGE

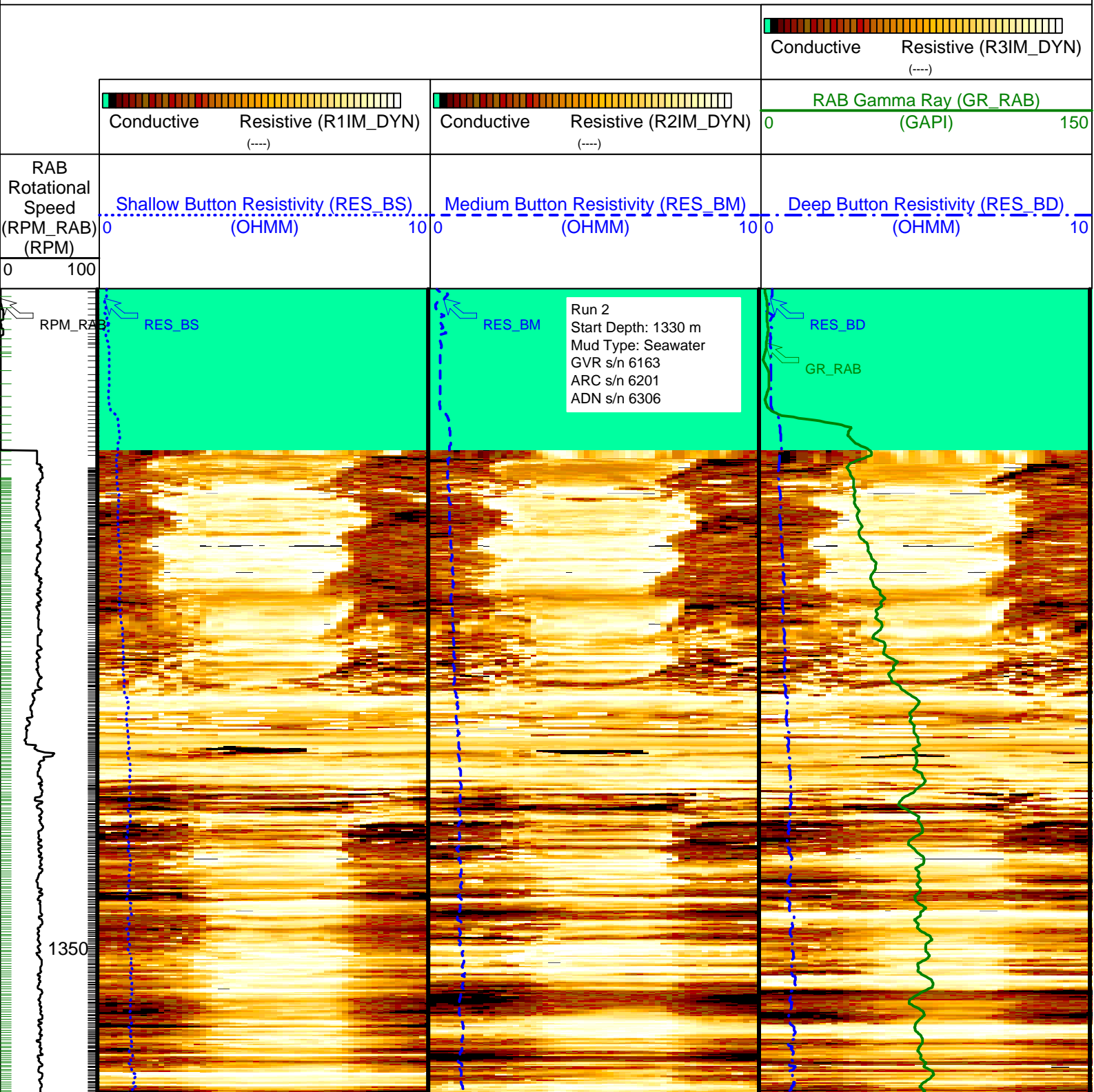
Vertical Scale: 1:200

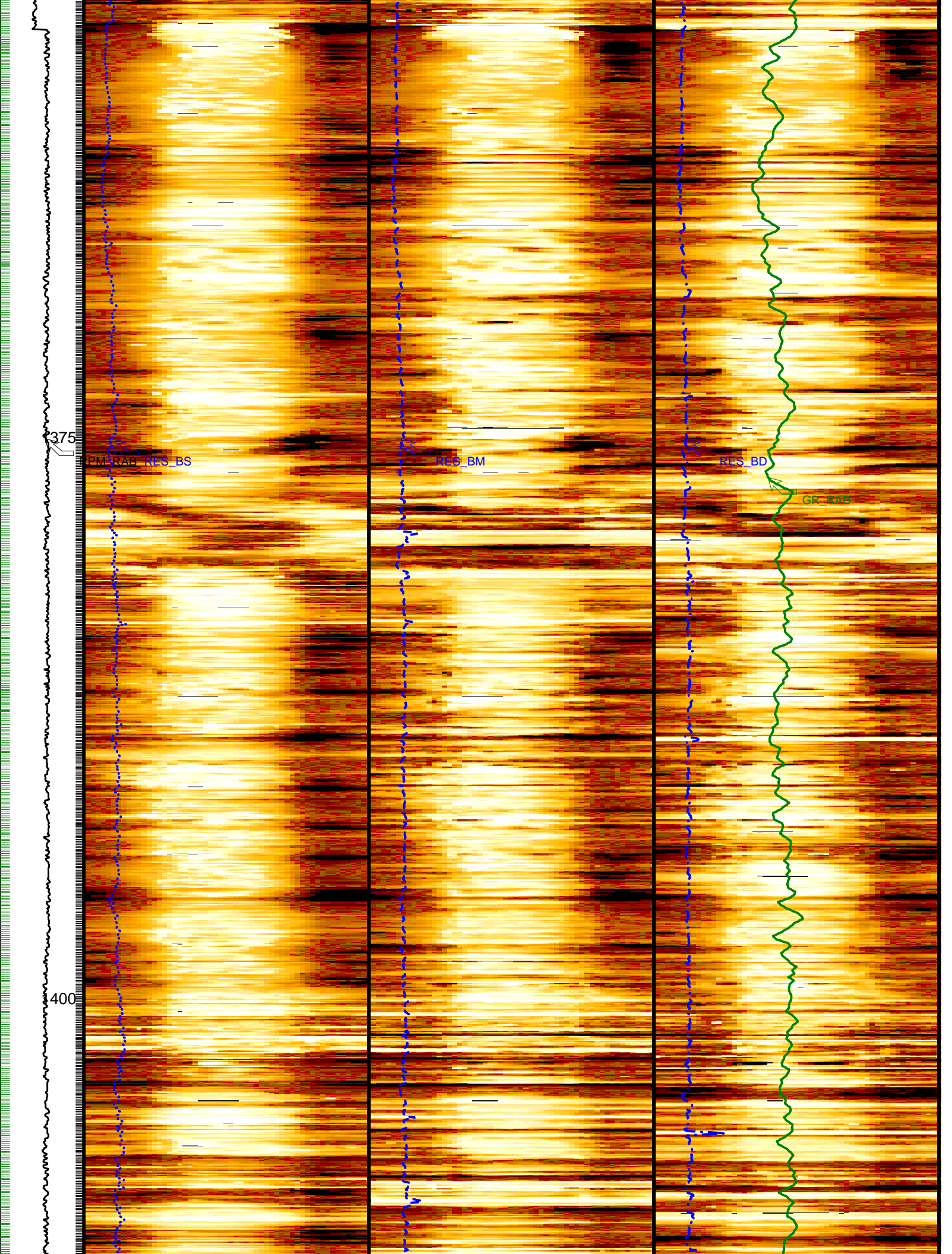
Graphics File Created: 01-Jul-2005 00:49

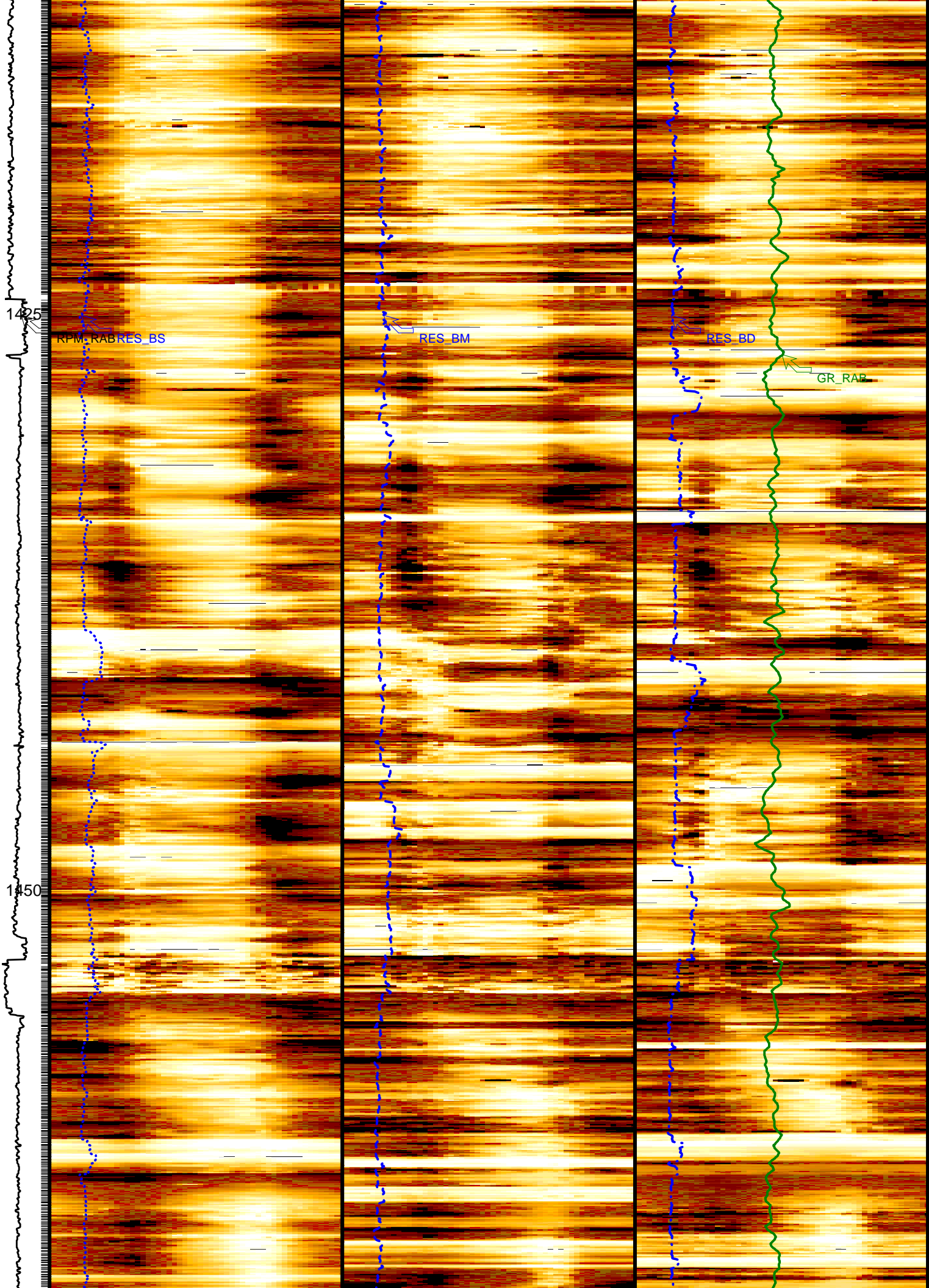
PIP SUMMARY

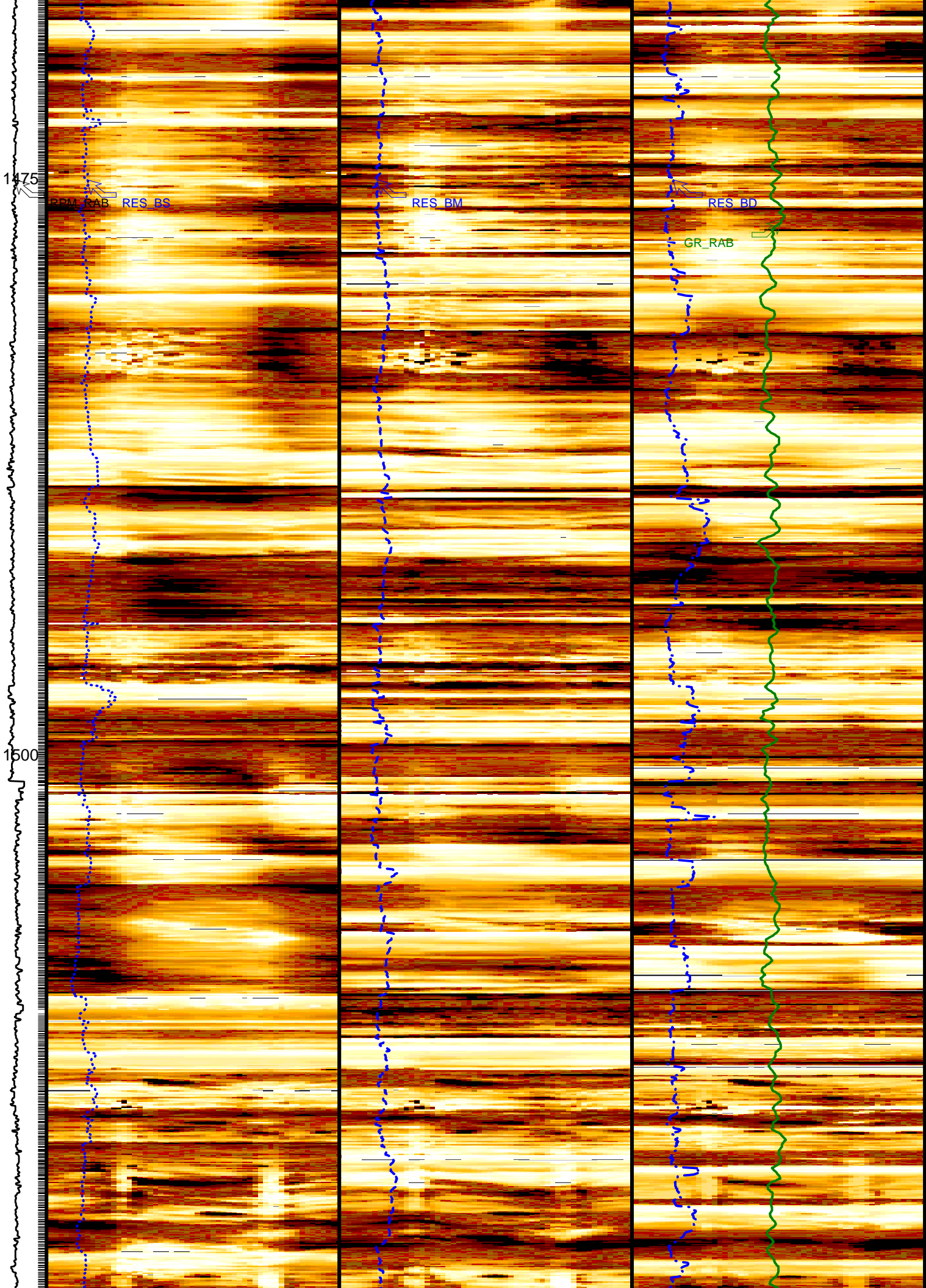
┆ Ring Samples

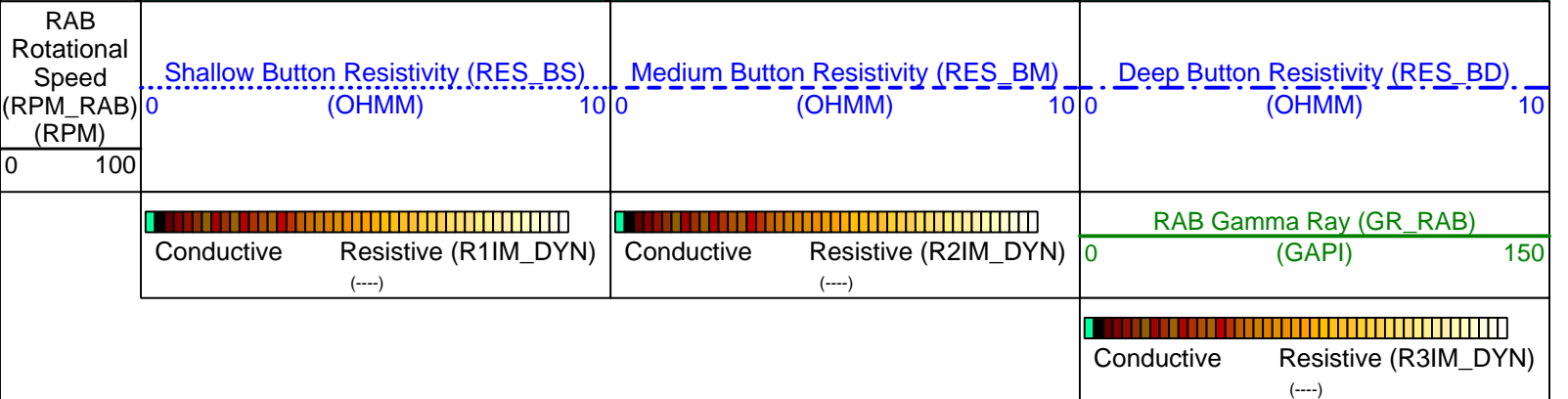
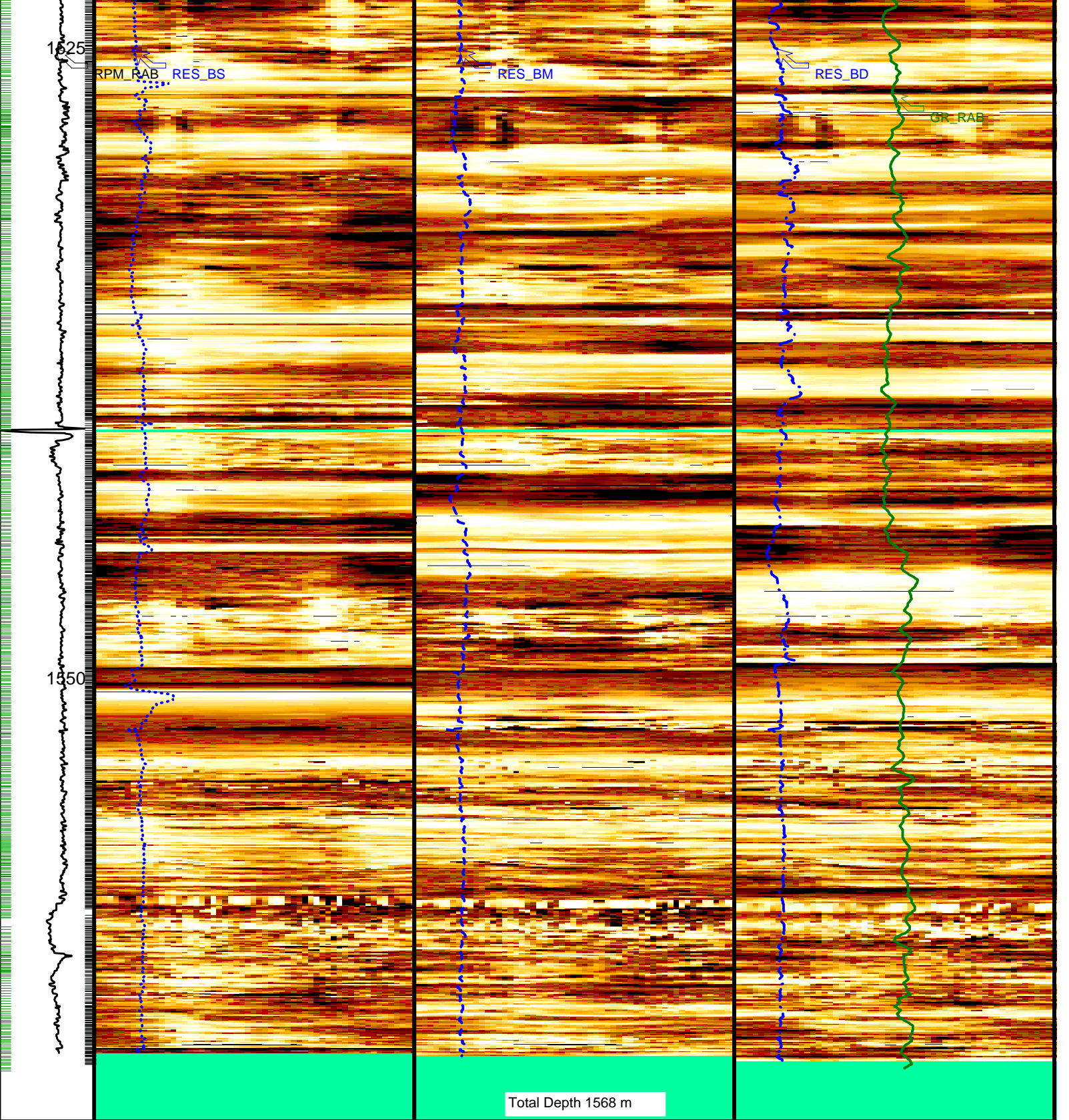
┆ Gamma Ray Samples











Ring Samples
 Gamma Ray Samples

IDEAL Version: ID10_OC_04
 IDF

Company: Integrated Ocean Drilling Program	Schlumberger
Well: IODP Exp 308 Hole U1322A	
Field: Mississippi Canyon Block 855	
Rig: Joides Resolution	
State: Louisiana	
GeoVISION Resistivity - Image 1 : 200 Measured Depth Recorded Mode Log	