

Company: Lamont Doherty

Well: IODP EXP 311 U1327E

Field: CAS-01B

Country: Canada

Ocean: Pacific

Dipole Sonic

Rig- Joides Resolution

Permanent Datum:	GROUND LEVEL	Elev.:	K.B. 11.3 m
Log Measured From:	DES	G.L.:	-1314.6 m
Drilling Measured From:	DES	D.F.:	0 m
		Elev.:	0 m
			11.3 m above Perm. Datum

API Serial No.

Max. Hole Devi.

Longitude 55

Latitude 55

Country: Canada
Field: CAS-01B
Location: Rig- Joides Resolution
Well: IODP EXP 311 U1327E
Company: Lamont Doherty

Logging Date

Run Number	1	Depth Driller	1614.6 m
Schlumberger Depth		1602 m	
Bottom Log Interval		1600 m	
Top Log Interval		1262 m	
Casing Driller Size @ Depth		0.000 in @ 1387 m	
Casing Schlumberger		1385 m	
Bit Size		9.875 in	

Type Fluid In Hole
 Sepolite/Barite

Density	Viscosity	1.066 g/cm ³		
Fluid Loss	PH	0 cm ³		

MUD

RM @ Measured Temperature	0.177 ohm.m @	23 degC	
RMF @ Measured Temperature	0.158 ohm.m @		
RMC @ Measured Temperature	0.149 ohm.m @		
Source RMF	RMC		
RM @ MRT	RMF @ MRT	0.199 @ 18	@ 18
Maximum Recorded Temperatures	18 degC		
Circulation Stopped	Time	9/30/05	1100
Logger On Bottom	Time	10/11/05	See Log
Unit Number	Location	99 Houston	
Recorded By		Steve Kittredge	
Witnessed By		Gilles Guerin, Alberto Malinverno	

Logging Date		Run 1	Run 2	Run
Run Number				
Depth Driller				
Schlumberger Depth				
Bottom Log Interval				
Top Log Interval				
Casing Driller Size @ Depth		@		
Casing Schlumberger				
Bit Size				
Type Fluid In Hole				
Density	Viscosity			
Fluid Loss	PH			
Source Of Sample				
RM @ Measured Temperature		@		
RMF @ Measured Temperature		@		
RMC @ Measured Temperature		@		
Source RMF	RMC			
RM @ MRT	RMF @ MRT	@	@	
Maximum Recorded Temperatures				
Circulation Stopped	Time			
Logger On Bottom	Time			
Unit Number	Location			
Recorded By				
Witnessed By				

DISCLAIMER

THE USE OF AND RELIANCE UPON THIS RECORDED-DATA BY THE HEREIN NAMED COMPANY (AND ANY OF ITS AFFILIATES, PARTNERS, REPRESENTATIVES, AGENTS, CONSULTANTS AND EMPLOYEES) IS SUBJECT TO THE TERMS AND CONDITIONS AGREED UPON BETWEEN SCHLUMBERGER AND THE COMPANY, INCLUDING: (a) RESTRICTIONS ON USE OF THE RECORDED-DATA; (b) DISCLAIMERS AND WAIVERS OF WARRANTIES AND REPRESENTATIONS REGARDING COMPANY'S USE OF AND RELIANCE UPON THE RECORDED-DATA; AND (c) CUSTOMER'S FULL AND SOLE RESPONSIBILITY FOR ANY INFERENCE DRAWN OR DECISION MADE IN CONNECTION WITH THE USE OF THIS RECORDED-DATA.

OTHER SERVICES1 OS1: None OS2: OS3: OS4: OS5:	OTHER SERVICES2 OS1: OS2: OS3: OS4: OS5:
--	---

REMARKS: RUN NUMBER 1 Hole Cored With APC/XCB. All depths in Meters Below Rig Floor (MBRF). Hole flushed with Sepiolite/Barite Mud. Sae Floor Driller- 1314.6 MBRF. Sea Floor Logger- 1313 MBRF. Total Depth Driller- 1614.6 MBRF. Total Depth Logger- 1602 MBRF. Casing Bottom Driller- 1387 MBRF. Casing Bottom Logger- 1385 MBRF.	REMARKS: RUN NUMBER 2
---	-----------------------

RUN 1			RUN 2		
SERVICE ORDER #:			SERVICE ORDER #:		
PROGRAM VERSION: 12C0-301			PROGRAM VERSION:		
FLUID LEVEL:			FLUID LEVEL:		
LOGGED INTERVAL	START	STOP	LOGGED INTERVAL	START	STOP

EQUIPMENT DESCRIPTION

RUN 1		RUN 2	
SURFACE EQUIPMENT			
GSR-U/Y 166 WITM (DTS)-A			

DOWNHOLE EQUIPMENT			
LEH-QT			34.17
LEH-QT 1726			
DTC-H	CTEM	33.01	33.28
ECH-KC	TelStatus ToolStatu	32.37	
SGT-N	Gamma Ray	32.09	32.37
SGH-K 2450			

SGC-TB 9585

AH-MCD
AH-MCD

30.69

DSST-B
SPAC-B 8128
ECH-SD 8128
SMDR-BD 8076
SSIJ-BA 8127
SMDX-AA 8148

28.57

PWF 13.02

AH-MCD
AH-MCD

13.02

DTA-A
ECH-KE

10.74

DIT-E
DIC-EB 438
MIH-ZA
DIS-HB 442

9.52

SP 3.15
Deep Ind 2.90
Aux Meas SFL 1.98
Med Ind 1.83
Status HV DF
Tension 0.00
TOOL ZERO

MAXIMUM STRING DIAMETER 4.50 IN
MEASUREMENTS RELATIVE TO TOOL ZERO
ALL LENGTHS IN METERS

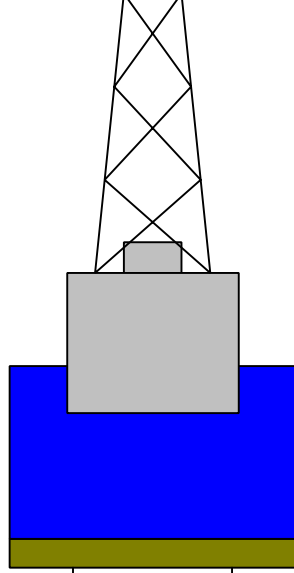
Production String	(in)	(m)	Well Schematic	(m)	(in)	Casing String
	OD	ID		MD	OD	

Kelly Bushing Elevation
 Derrick Floor Elevation

 Mean Sea Level

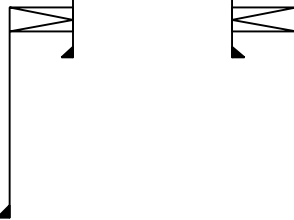
11.3
 11.0

 0.0



0.0 5.500

Casing String



1314.6 9.875
1387.6 ~~5.500~~ 9.875

 1614.6 9.875

Casing String
~~Casing String~~

 Casing Shoe

Schlumberger

Main Up Log

MAXIS Field Log

Output DLIS Files

DEFAULT	PI_DSI_007LUP	FN:6	PRODUCER	10-Oct-2005 22:37	1602.8 M	1262.3 M
---------	---------------	------	----------	-------------------	----------	----------

OP System Version: 12C0-301
MCM

DIT-E	12C0-301	DTA-A	12C0-301
DSST-B	12C0-301	SGT-N	12C0-301
DTC-H	12C0-301		

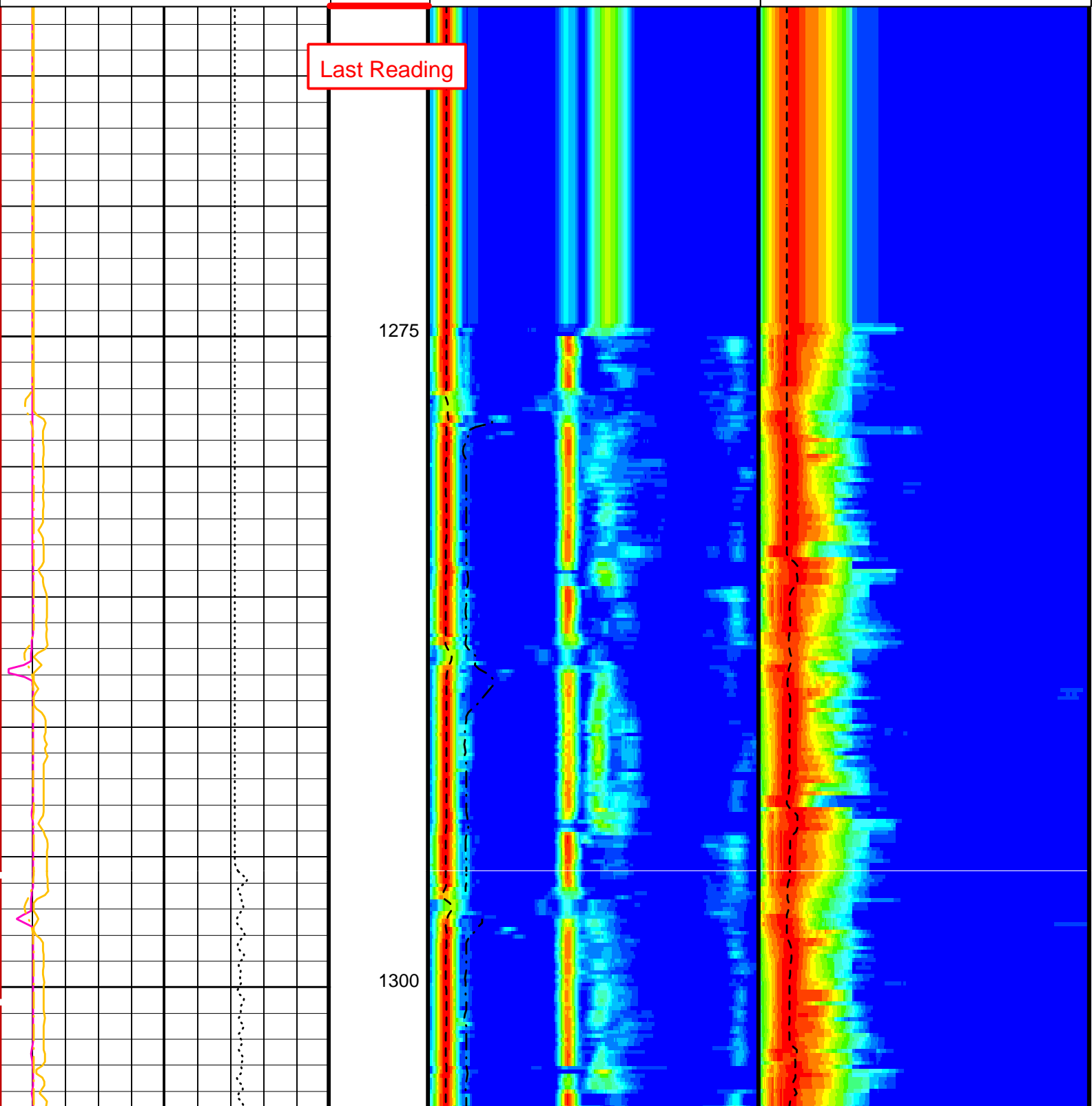
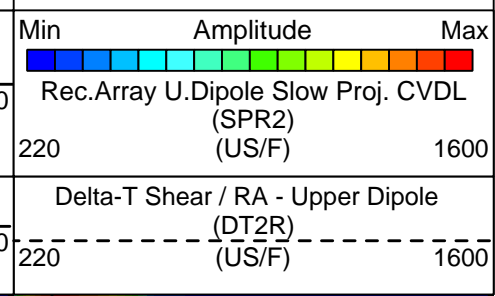
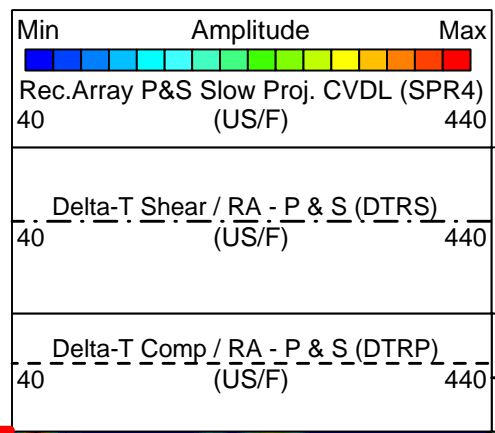
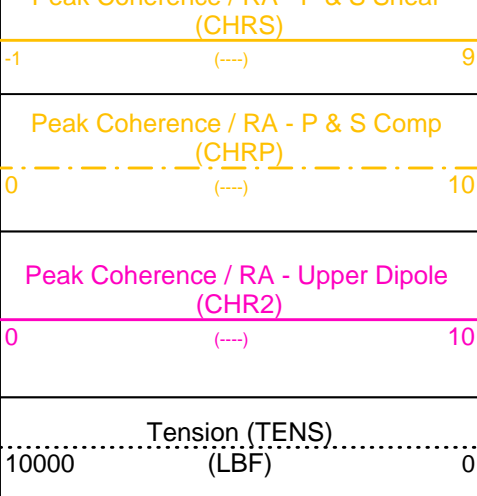
PIP SUMMARY

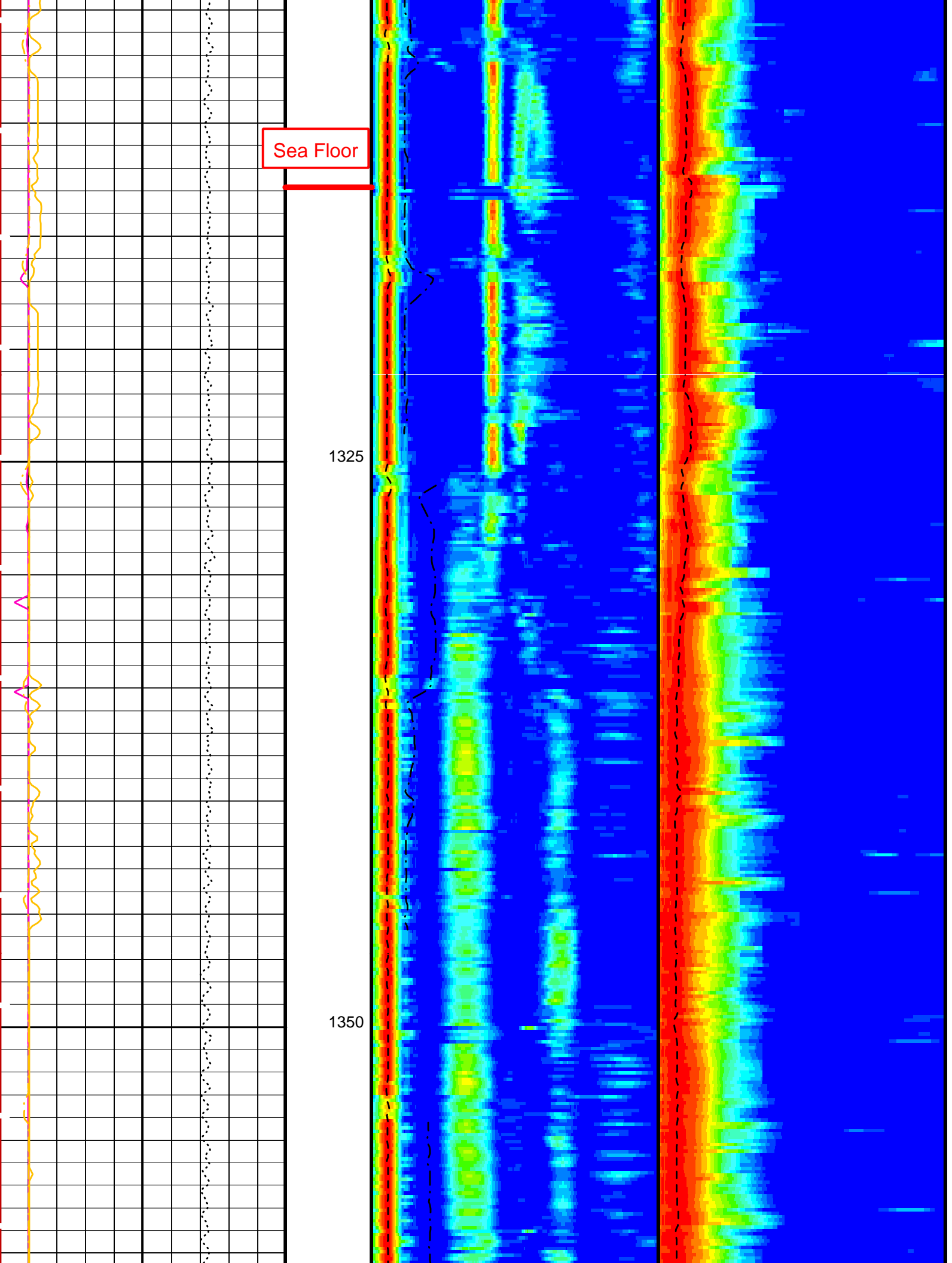
 Time Mark Every 60 S

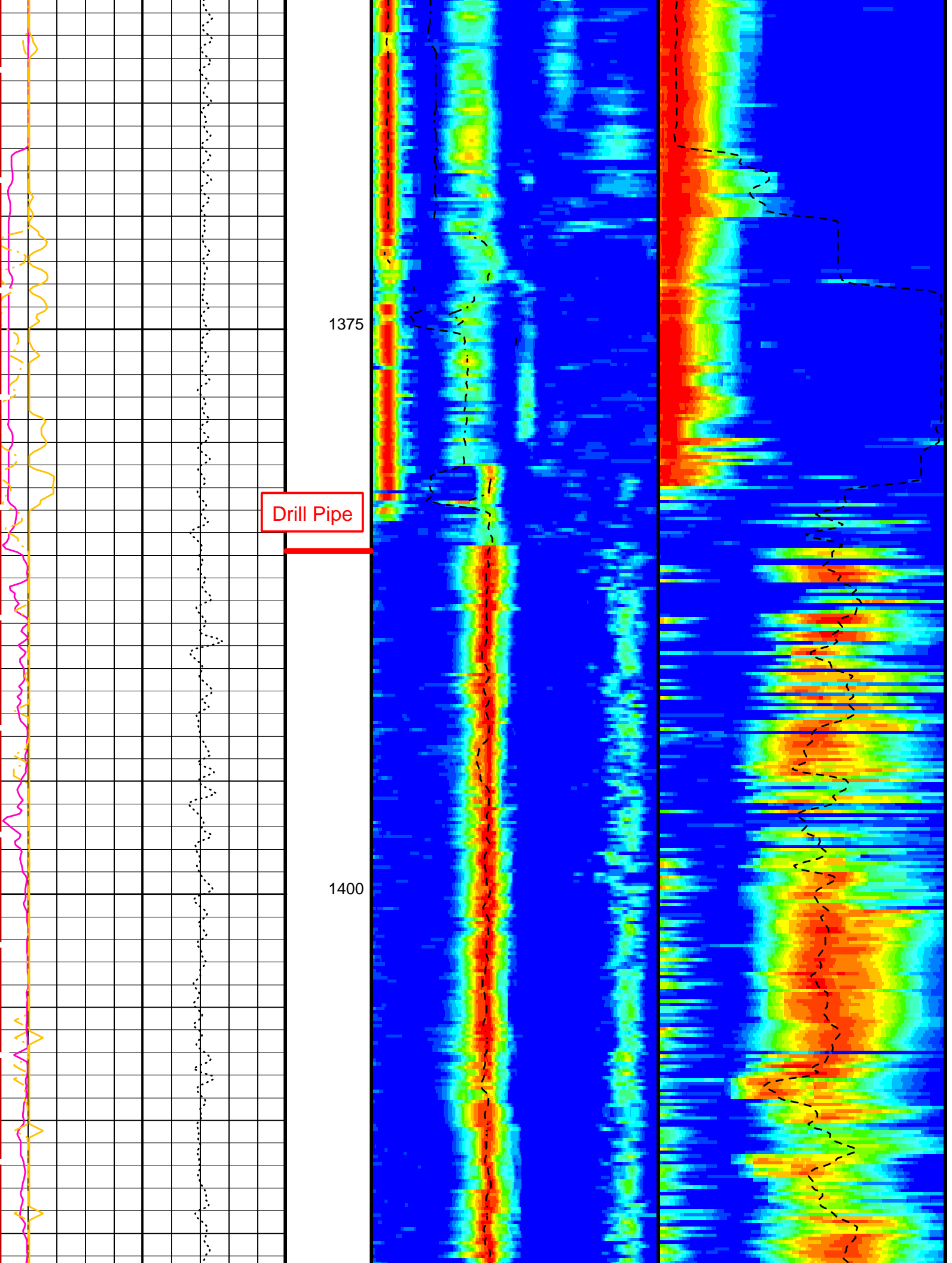
Waveform Data Copy Indicator 4 -
Monopole P&S (WCI4)

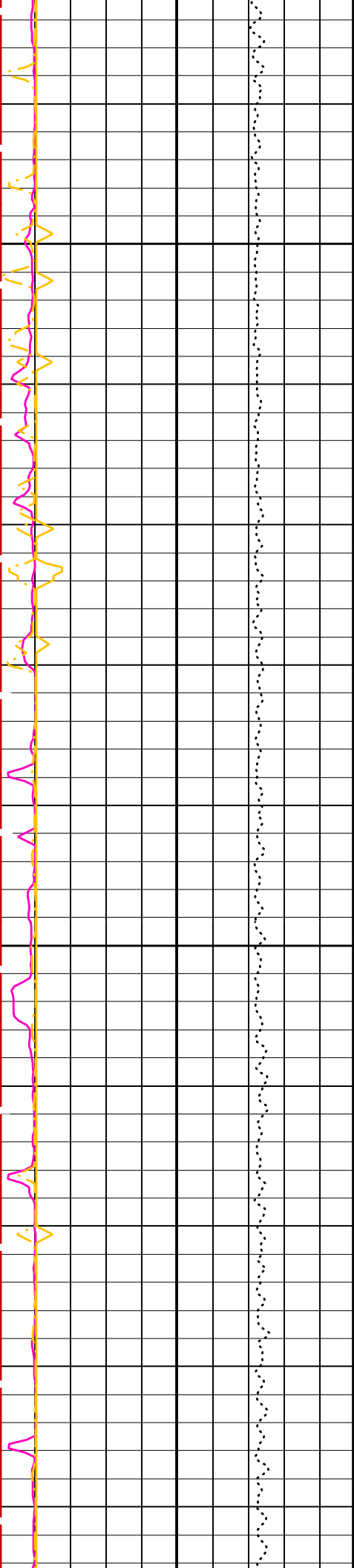
0	(---)	10
---	-------	----

Peak Coherence / RA - P & S Shear



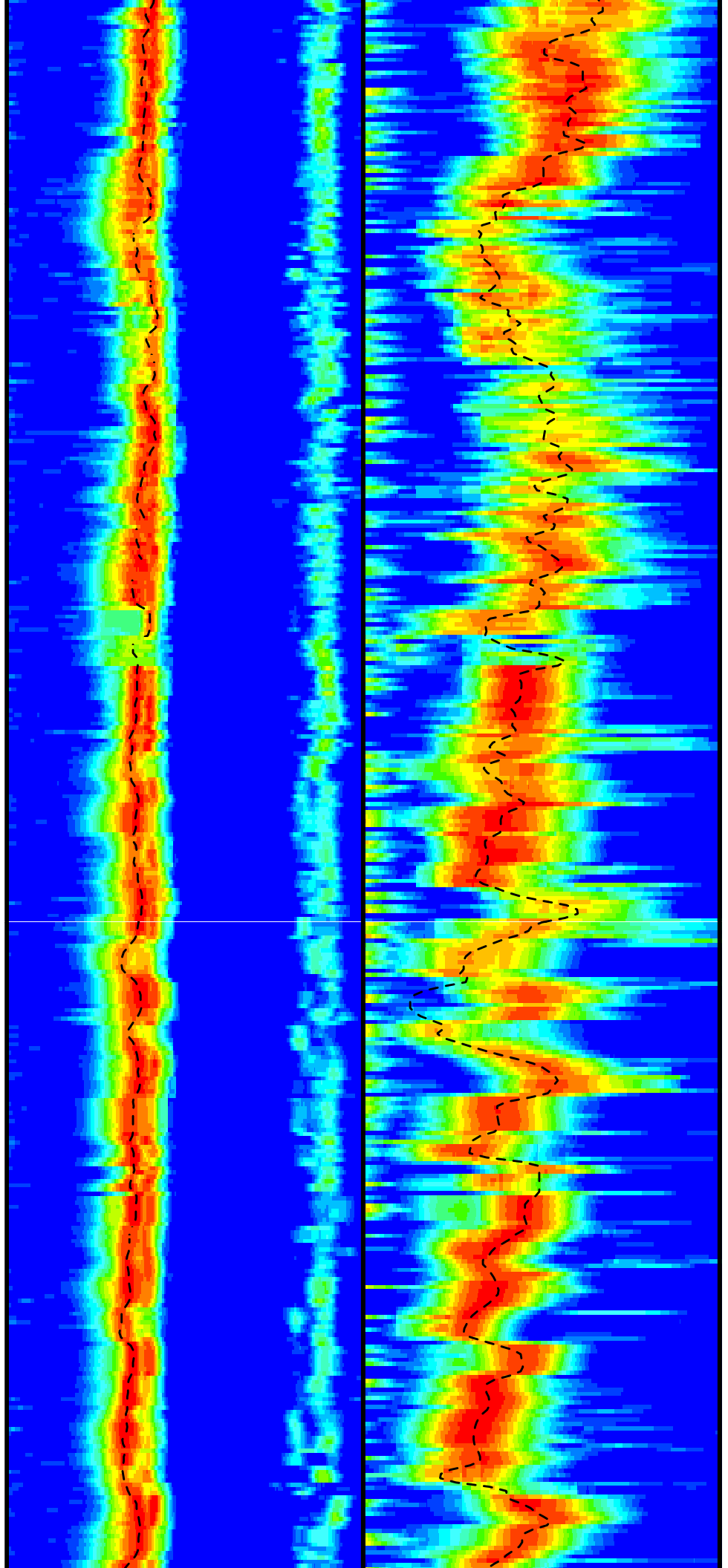


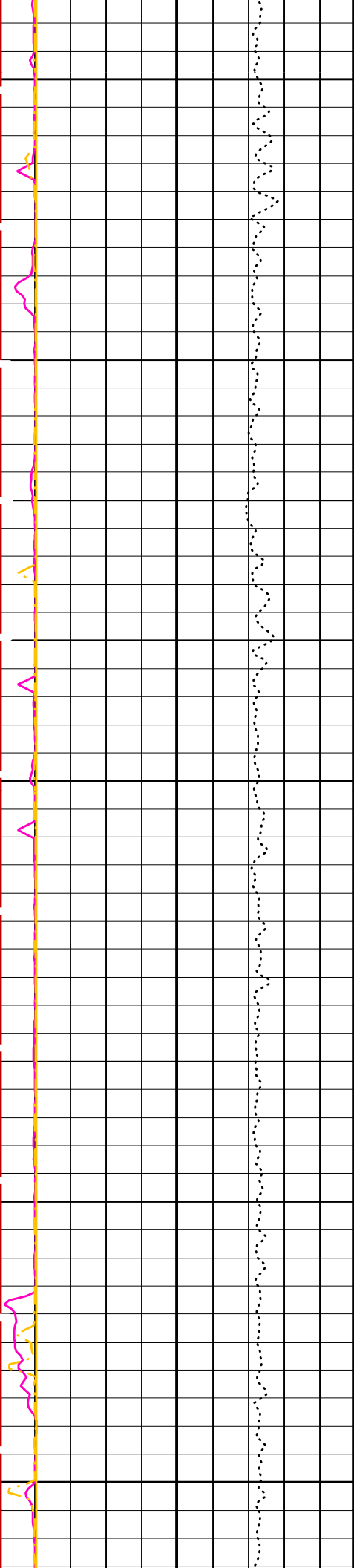




1425

1450

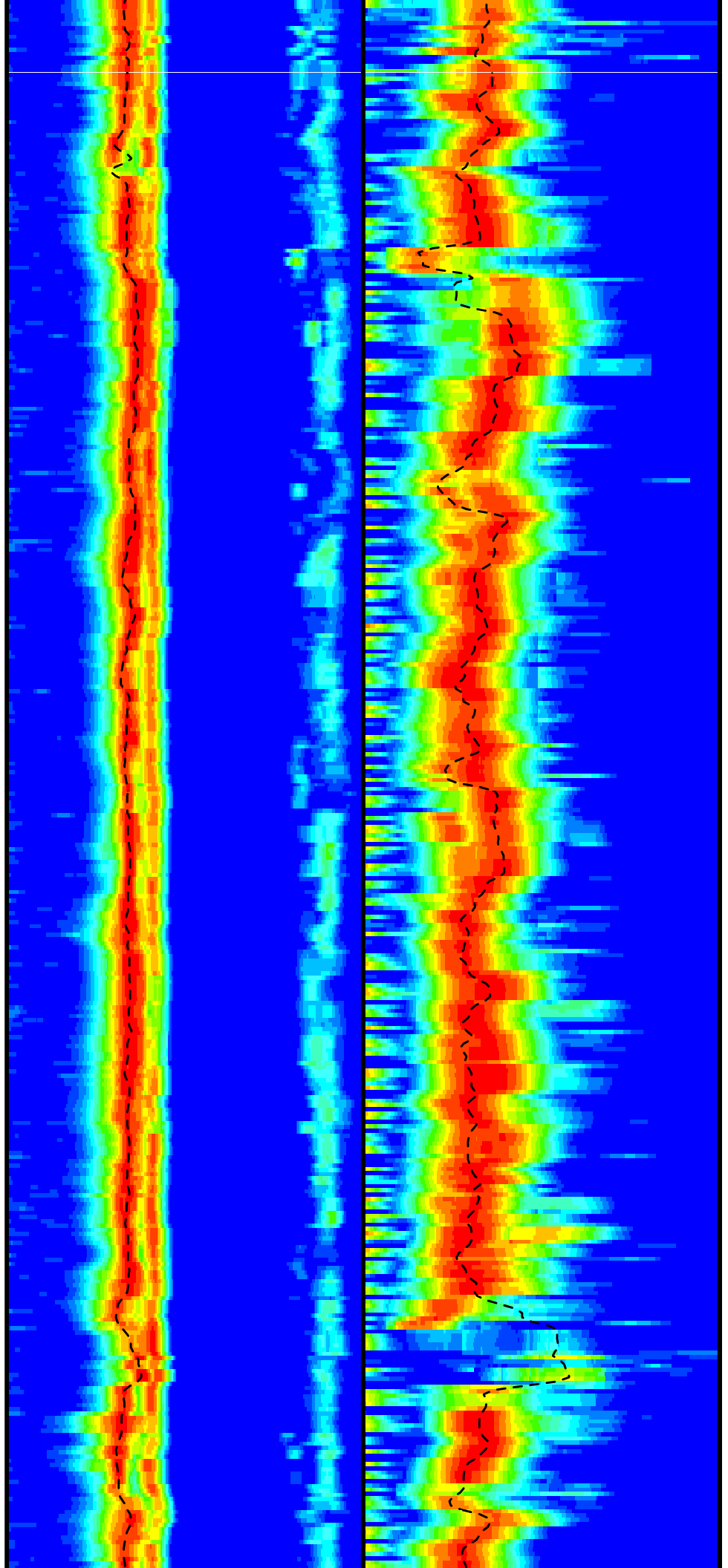


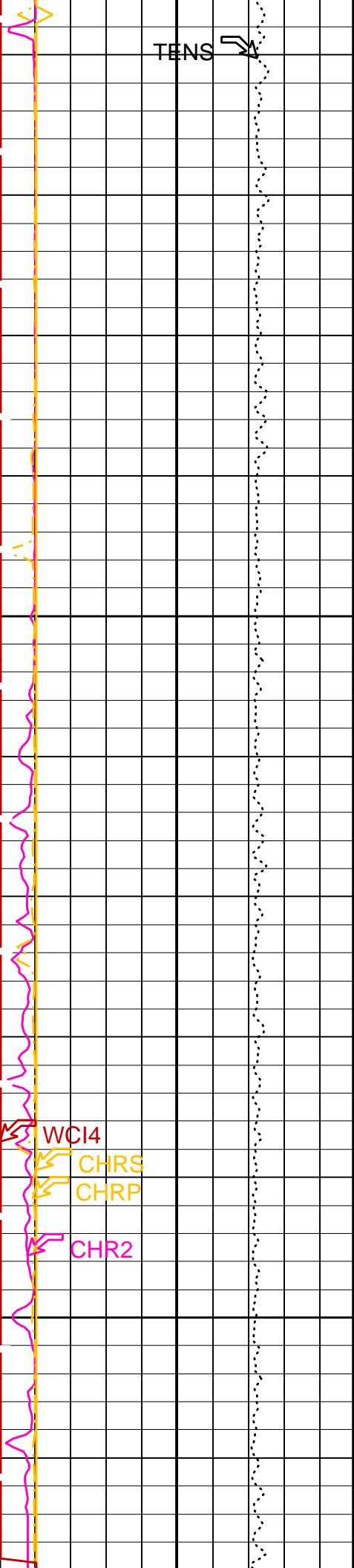


1475

1500

1525



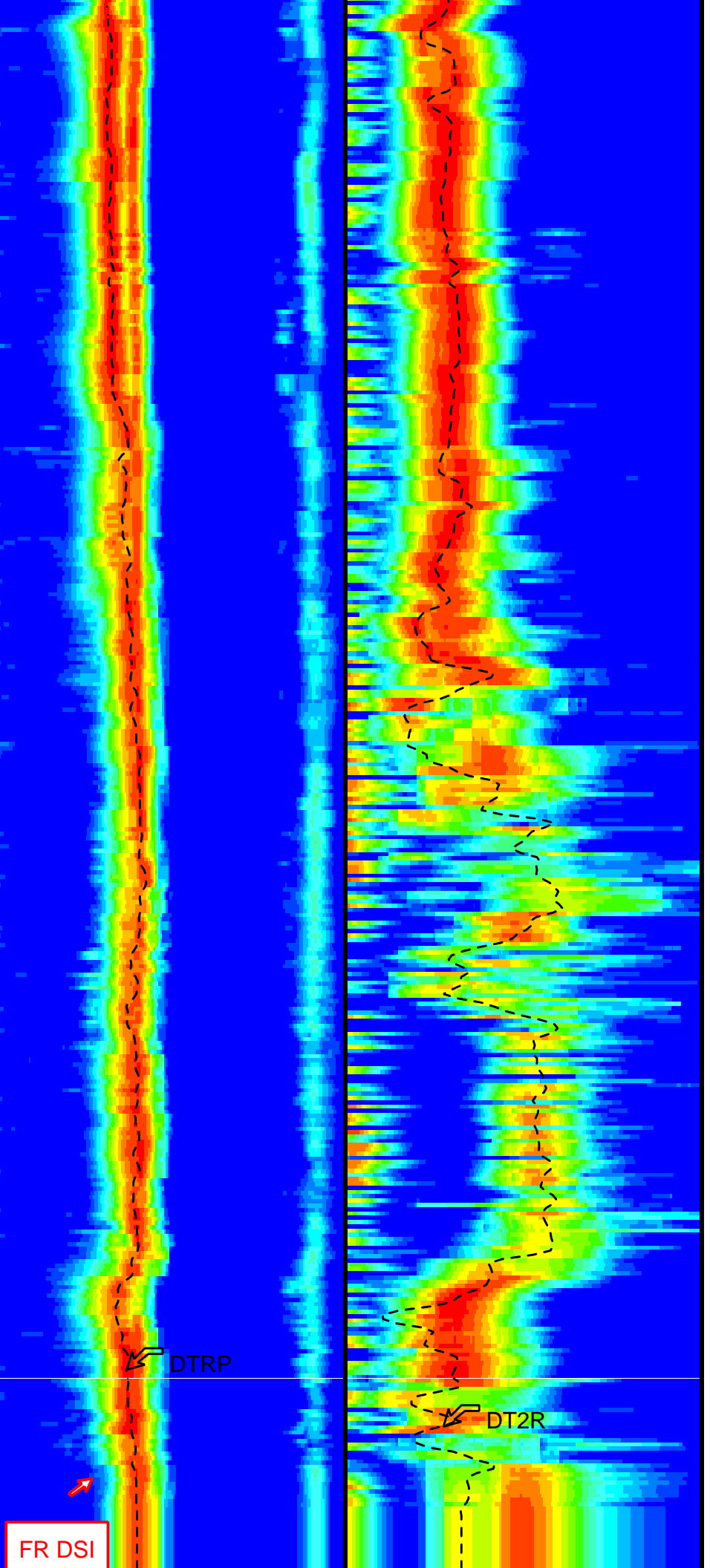


TENS

1550

1575

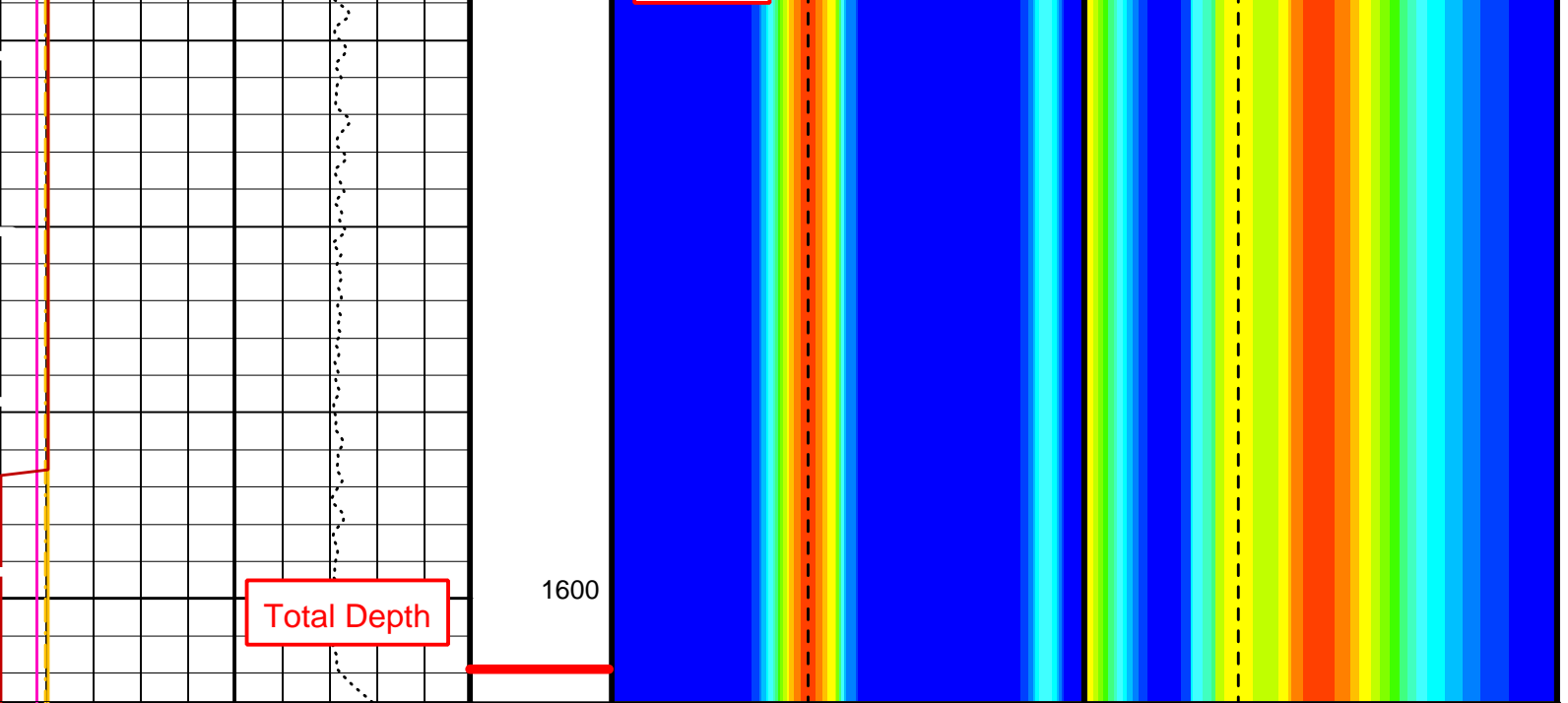
WCI4
CHRS
CHRP
CHR2



DTRP

DT2R

FR DSI



<p>Tension (TENS) (LBF)</p> <p>10000 ----- 0</p>	<p>Delta-T Comp / RA - P & S (DTRP) (US/F)</p> <p>40 ----- 440</p>	<p>Delta-T Shear / RA - Upper Dipole (DT2R) (US/F)</p> <p>220 ----- 1600</p>
<p>Peak Coherence / RA - Upper Dipole (CHR2)</p> <p>0 ----- 10</p>	<p>Delta-T Shear / RA - P & S (DTRS) (US/F)</p> <p>40 ----- 440</p>	<p>Min ----- Amplitude ----- Max</p> <p>Rec.Array U.Dipole Slow Proj. CVDL (SPR2) (US/F)</p> <p>220 ----- 1600</p>
<p>Peak Coherence / RA - P & S Comp (CHRP)</p> <p>0 ----- 10</p>	<p>Min ----- Amplitude ----- Max</p> <p>Rec.Array P&S Slow Proj. CVDL (SPR4) (US/F)</p> <p>40 ----- 440</p>	
<p>Peak Coherence / RA - P & S Shear (CHRS)</p> <p>-1 ----- 9</p>		
<p>Waveform Data Copy Indicator 4 - Monopole P&S (WCI4)</p> <p>0 ----- 10</p>		

PIP SUMMARY

Time Mark Every 60 S

Parameters

DLIS Name	Description	Value
BHS	DIT-E: Dual Induction - E Borehole Status	OPEN
BHS	DSST-B: Dipole Shear Imager - B Borehole Status	OPEN
CASF	Label Casing Function - Monopole P&S	50
COLL	Label Slowness Lower Limit - Monopole P&S Compressional	40 US/F
COUL	Label Slowness Upper Limit - Monopole P&S Compressional	240 US/F
DDE2	Digitizing Delay 2	0 US
DDE4	Digitizing Delay 4	0 US
DDEX	Digitizing Delay X	0 US
DLCS	Label Compressional Source - Dipole Shear	USE
DSHL	Label Slowness Lower Limit - Dipole Shear	220 US/F
DSHU	Label Slowness Upper Limit - Dipole Shear	1600 US/F
DSI2	Digitizer Sample Interval 2	40 US
DSI4	Digitizer Sample Interval 4	10 US
DSIX	Digitizer Sample Interval X	40 US
DTCS	Compressional Delta-T Source for DTCS Channel	PS_COMP
DTF	Delta-T Fluid	189 US/F
DWC2	Digitizer Word Count 2	512
DWC4	Digitizer Word Count 4	512
DWCX	Digitizer Word Count X	512

FILG	Label Fill Gap Control - Monopole P&S	COMP_SHEAR	
LFC	Label Formation Character - Monopole P&S	DYNAMIC	
MCS	Mean Casing Slowness	57	US/F
MTXG	Monopole Transmitter Geometry	186	IN
NWI2	Number Waveform Items 2	8	
NWI4	Number Waveform Items 4	8	
NWIX	Number Waveform Items X	0	
RSMN	Label Shear/Compressional Minimum Ratio - Monopole P&S	1.4	
RSMX	Label Shear/Compressional Maximum Ratio - Monopole P&S	2.12	
RX1G	Receiver 1 Geometry	294	IN
RX2G	Receiver 2 Geometry	300	IN
RX3G	Receiver 3 Geometry	306	IN
RX4G	Receiver 4 Geometry	312	IN
RX5G	Receiver 5 Geometry	318	IN
RX6G	Receiver 6 Geometry	324	IN
RX7G	Receiver 7 Geometry	330	IN
RX8G	Receiver 8 Geometry	336	IN
SAM2	DSST Sonic Acquisition Mode 2 - Upper Dipole Mode	LFD_ODD	
SAM4	DSST Sonic Acquisition Mode 4 - High Frequency Monopole Mode for P&S	MFD_EVEN	
SAMX	DSST Sonic Acquisition Mode X - Both Dipoles or Monopole Mode for Expert	OFF	
SAS2	STC Sonic Array Status - Upper Dipole	255	
SAS4	STC Sonic Array Status - Monopole P&S	255	
SBO2	STC Search Band Offset - Upper Dipole	3000	US
SBO4	STC Search Band Offset - Monopole P&S	500	US
SBR4	STC Baseline Removal - Monopole P&S	ON	
SBW2	STC Search Bandwidth - Upper Dipole	8000	US
SBW4	STC Search Bandwidth - Monopole P&S	2000	US
SFC2	STC Formation Character - Upper Dipole	SELECTABLE	
SFC4	STC Formation Character - Monopole P&S	SELECTABLE	
SFM2	STC Filter - Upper Dipole	B.3-1.5K	
SFM4	STC Filter - Monopole P&S	B3-12K	
SHLL	Label Slowness Lower Limit - Monopole P&S Shear	75	US/F
SHUL	Label Slowness Upper Limit - Monopole P&S Shear	240	US/F
SLL2	STC Slowness Lower Limit - Upper Dipole	220	US/F
SLL4	STC Slowness Lower Limit - Monopole P&S	40	US/F
SST2	STC Slowness Step - Upper Dipole	4	US/F
SST4	STC Slowness Step - Monopole P&S	2	US/F
SSW2	STC Source Waveform - Upper Dipole	WF_SAM2	
SSW4	STC Source Waveform - Monopole P&S	WF_SAM4	
STLL	Label Slowness Lower Limit - Monopole Stoneley	220	US/F
STUL	Label Slowness Upper Limit - Monopole Stoneley	1600	US/F
SUL2	STC Slowness Upper Limit - Upper Dipole	1600	US/F
SUL4	STC Slowness Upper Limit - Monopole P&S	440	US/F
SWD2	STC Slowness Width - Upper Dipole	40	US/F
SWD4	STC Slowness Width - Monopole P&S	10	US/F
TBF2	STC Time for Baseline Fill - Upper Dipole	0	US
TBF4	STC Time for Baseline Fill - Monopole P&S	300	US
TLL2	STC Time Lower Limit - Upper Dipole	1420	US
TLL4	STC Time Lower Limit - Monopole P&S	150	US
TST2	STC Time Step - Upper Dipole	200	US
TST4	STC Time Step - Monopole P&S	50	US
TUL2	STC Time Upper Limit - Upper Dipole	20440	US
TUL4	STC Time Upper Limit - Monopole P&S	5110	US
TWD2	STC Time Width - Upper Dipole	2000	US
TWD4	STC Time Width - Monopole P&S	1000	US
TWI2	STC Integration Time Window - Upper Dipole	1600	US
TWI4	STC Integration Time Window - Monopole P&S	500	US
TWSX	Transmitter Waveform Select X	0	
UTXG	Upper Dipole Transmitter Geometry	162	IN
WFM4	Waveform Mode 4	W1	
BHS	SGT-N: Scintillation Gamma-Ray - N Borehole Status	OPEN	

Format: DSST_P_S_UPPER_VDL_COLOR Vertical Scale: 1:200 Graphics File Created: 10-Oct-2005 22:37

OP System Version: 12C0-301 MCM

DIT-E	12C0-301	DTA-A	12C0-301
DSST-B	12C0-301	SGT-N	12C0-301
DTC-H	12C0-301		

Output DLIS Files

DEFAULT PI_DSI_007LUP FN:6 PRODUCER 10-Oct-2005 22:37

Output DLIS Files

DEFAULT PI_DSI_007LUP FN:6 PRODUCER 10-Oct-2005 22:37 1000.0 M 1000.0 M

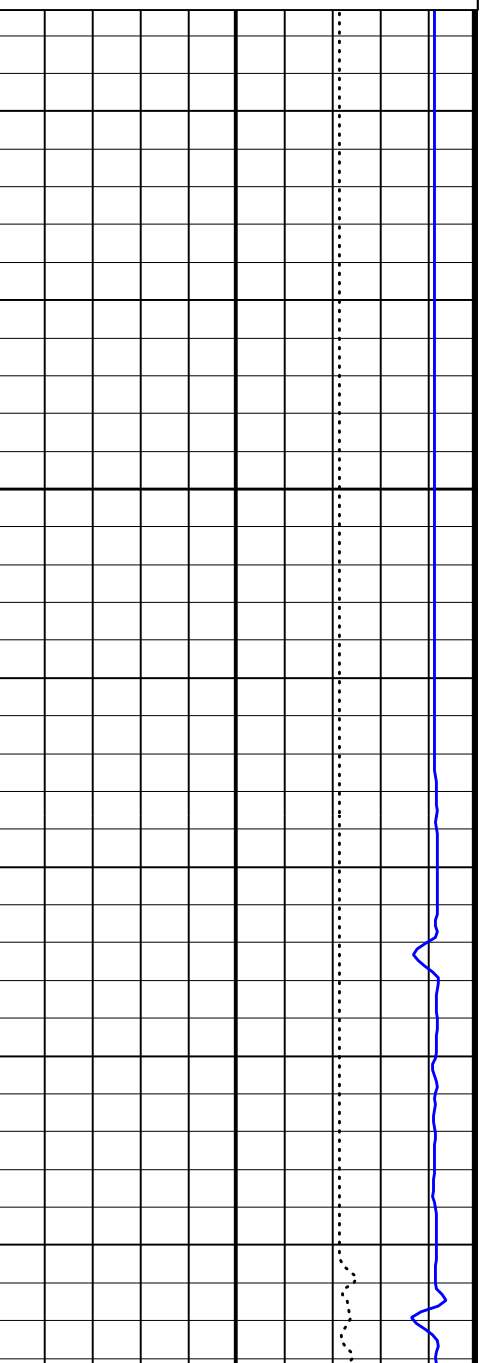
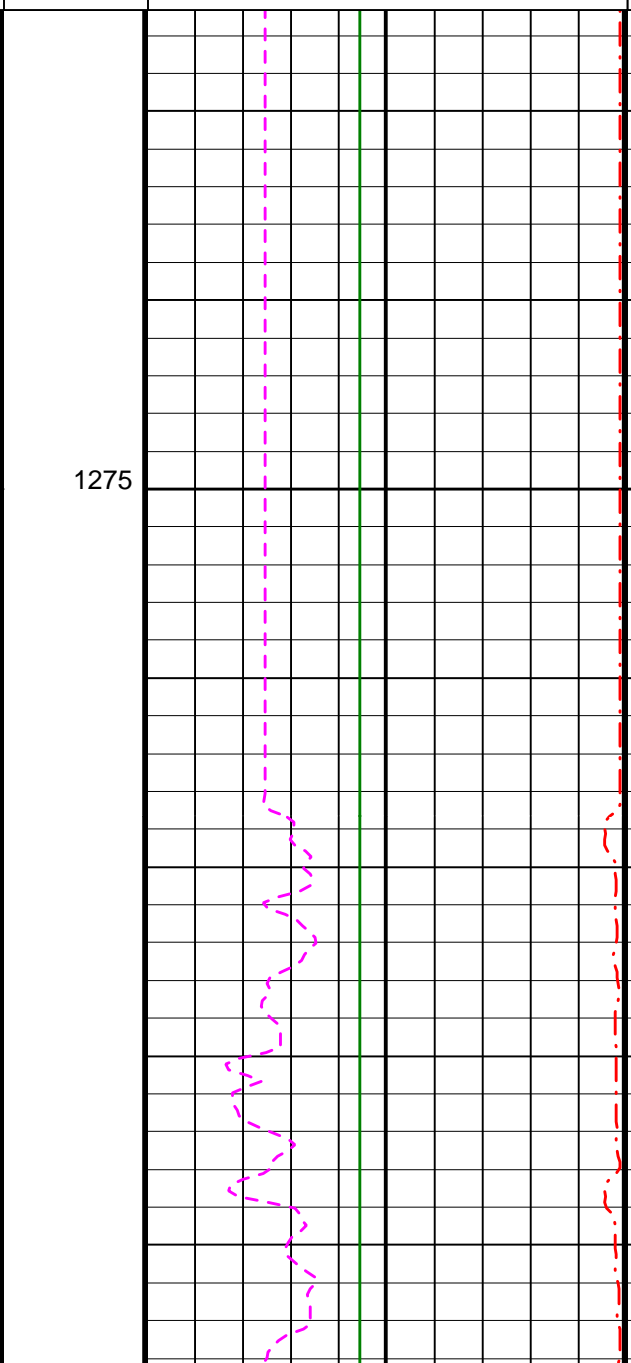
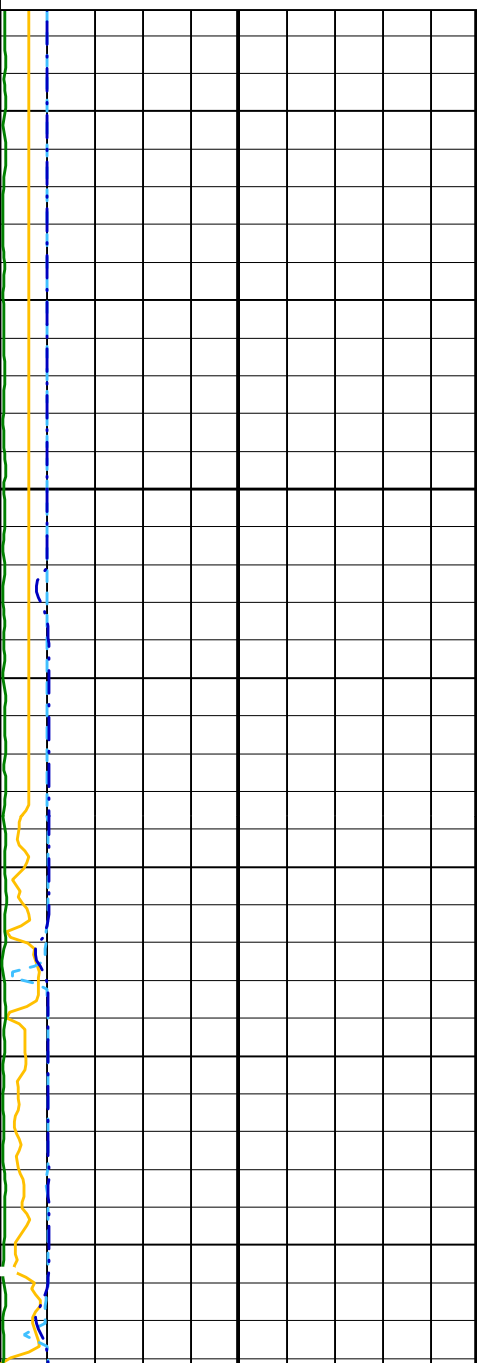
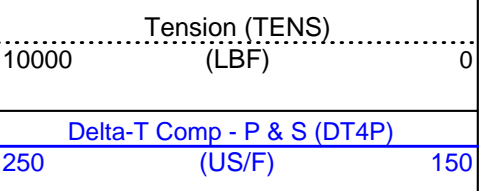
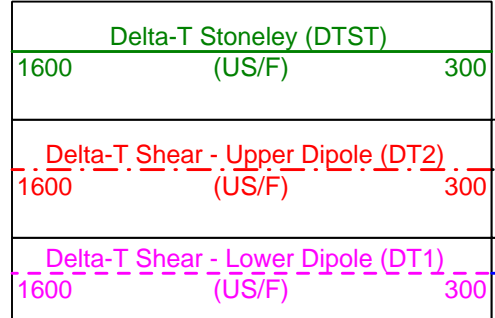
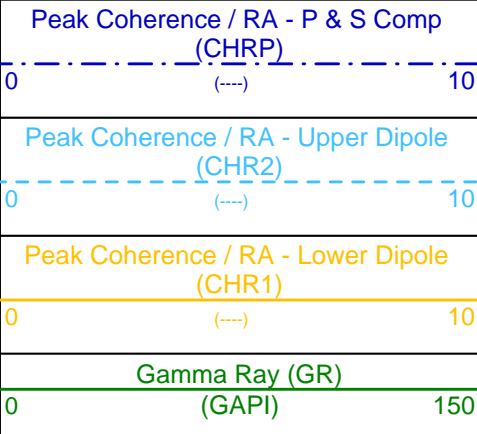
OP System Version: 12C0-301

MCM

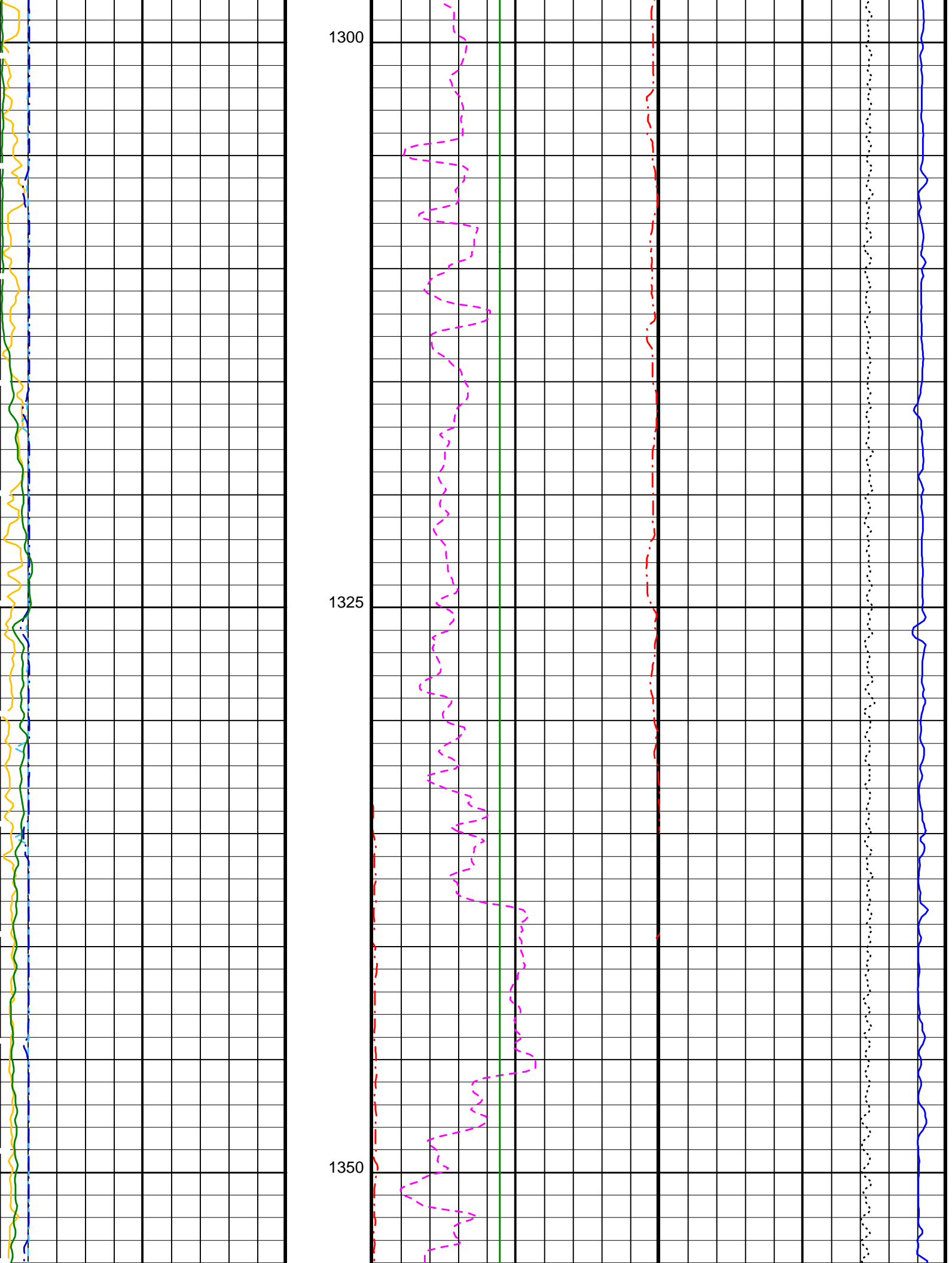
DIT-E	12C0-301	DTA-A	12C0-301
DSST-B	12C0-301	SGT-N	12C0-301
DTC-H	12C0-301		

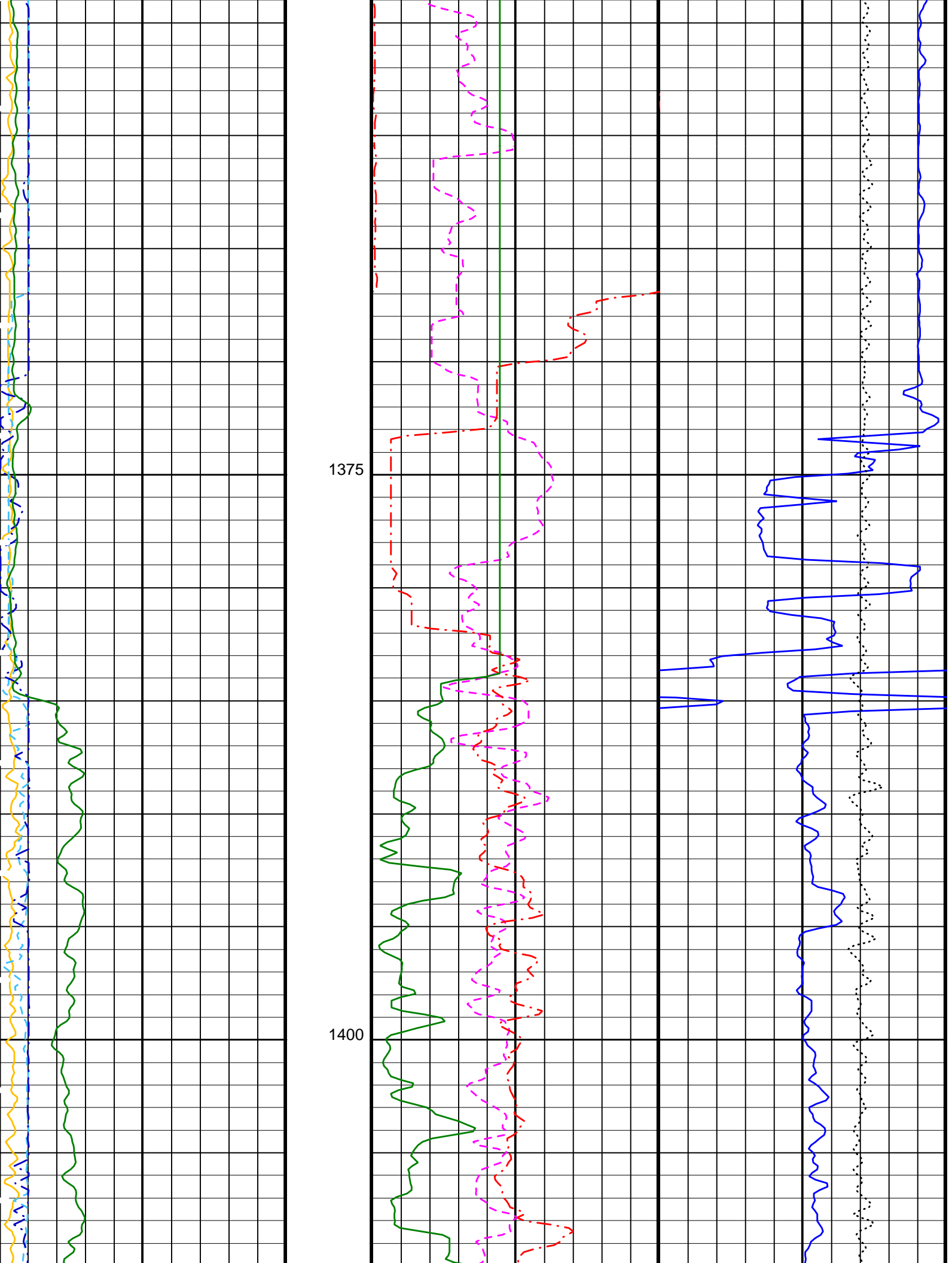
PIP SUMMARY

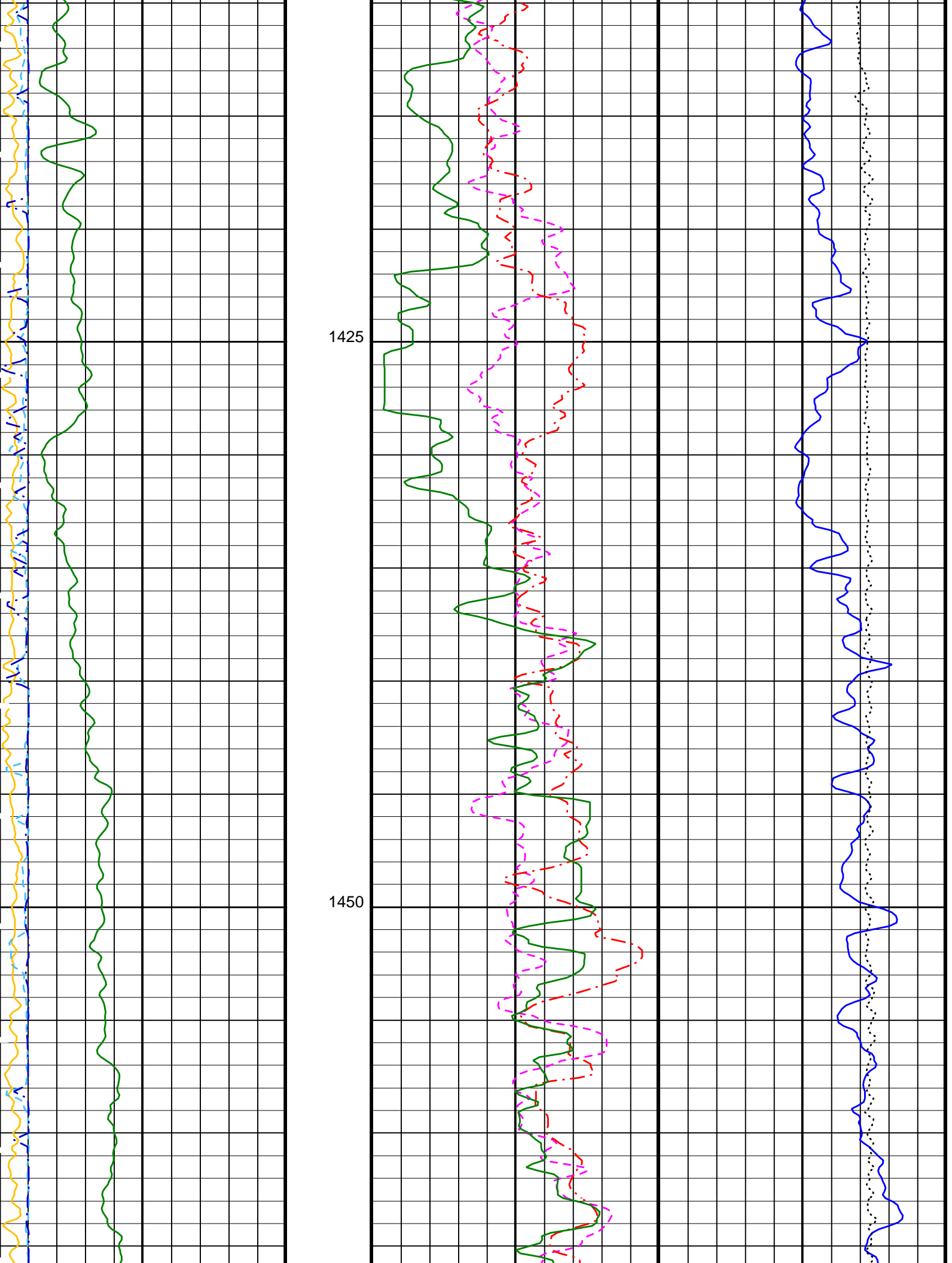
Time Mark Every 60 S

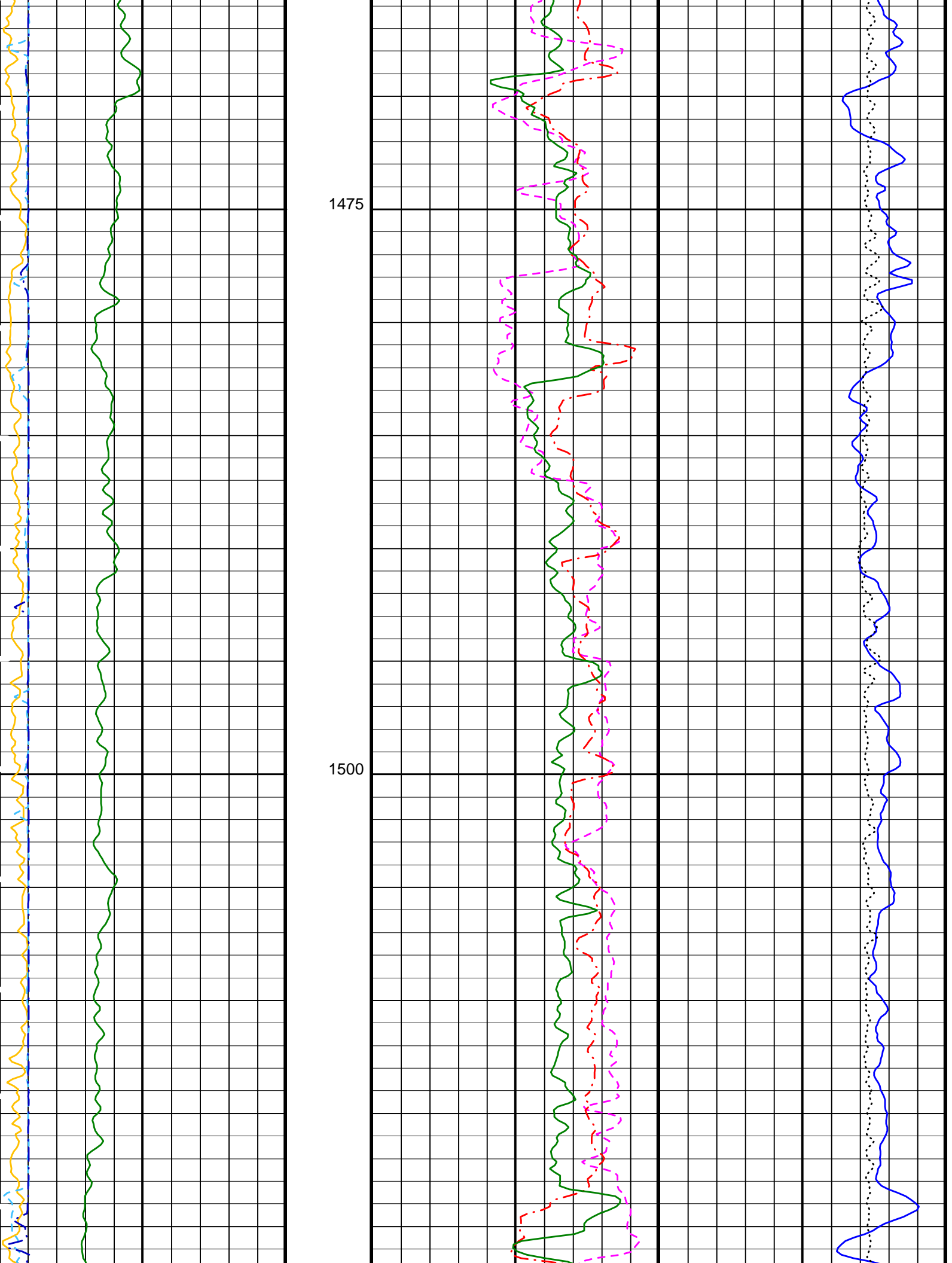


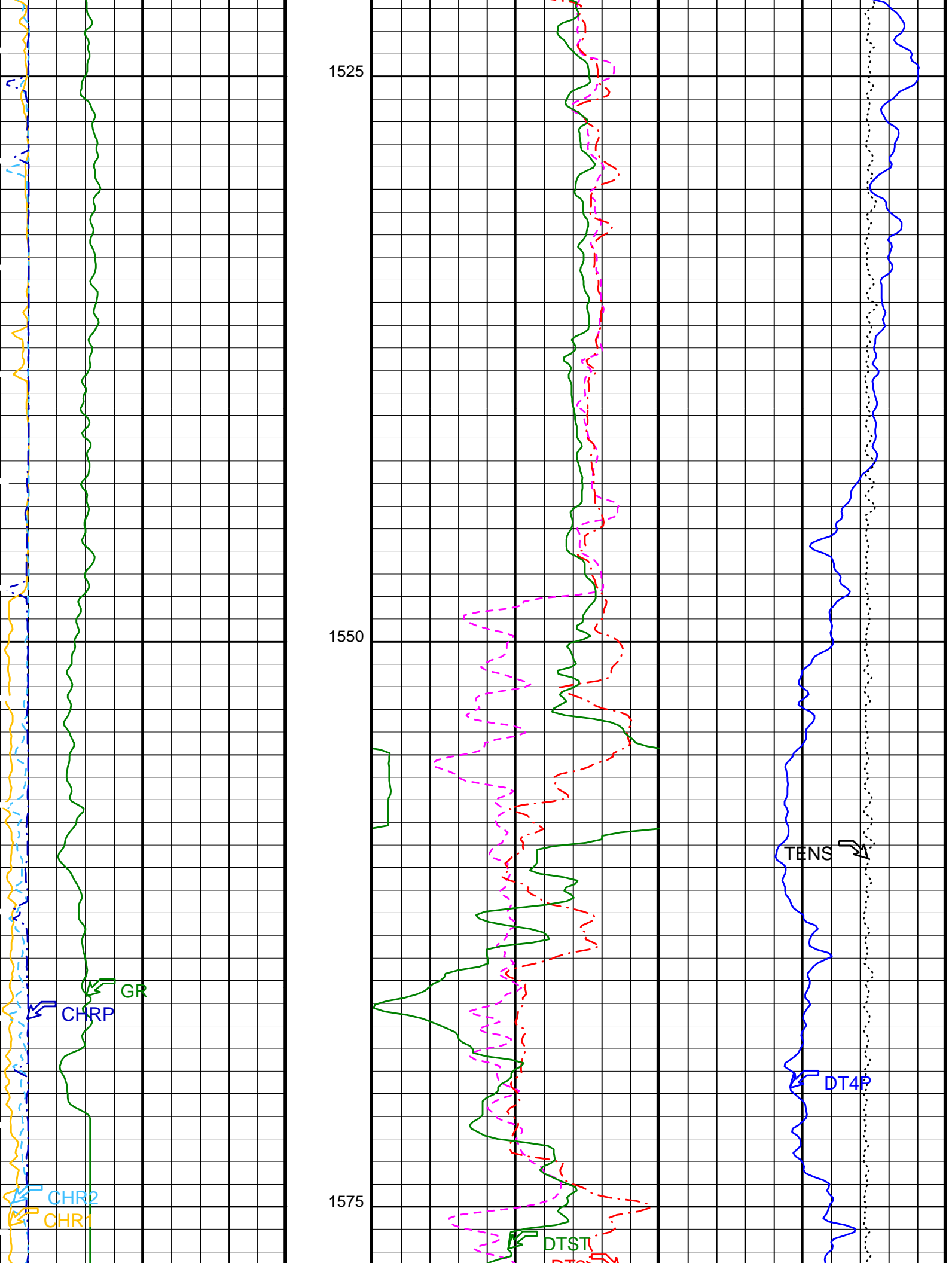
1275

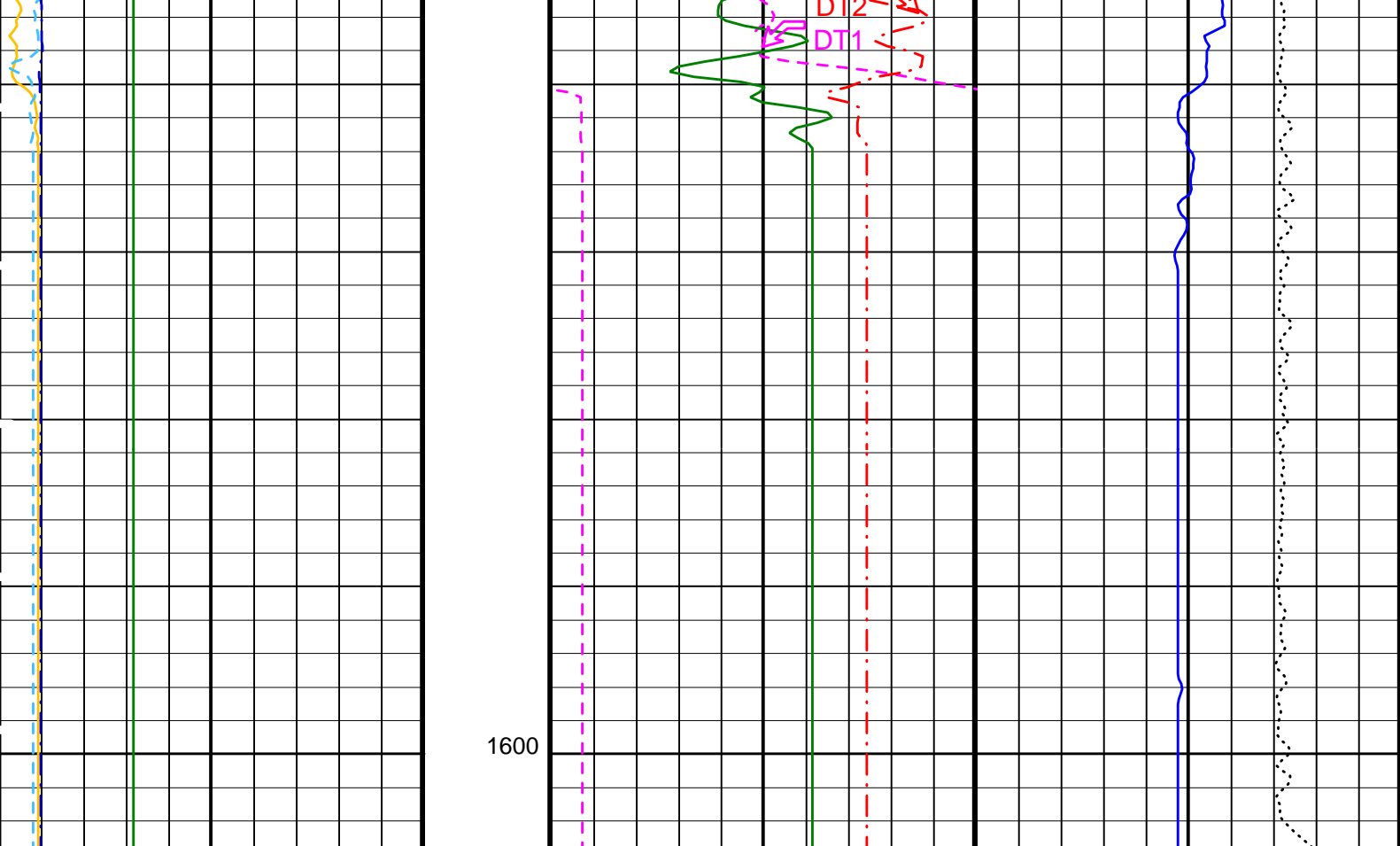












Gamma Ray (GR) (GAPI)	0	150	Delta-T Shear - Lower Dipole (DT1) (US/F)	1600	300	Delta-T Comp - P & S (DT4P) (US/F)	250	150
Peak Coherence / RA - Lower Dipole (CHR1)	0	10	Delta-T Shear - Upper Dipole (DT2) (US/F)	1600	300	Tension (TENS) (LBF)	10000	0
Peak Coherence / RA - Upper Dipole (CHR2)	0	10	Delta-T Stoneley (DTST) (US/F)	1600	300			
Peak Coherence / RA - P & S Comp (CHRP)	0	10						

PIP SUMMARY

Time Mark Every 60 S

Parameters

DLIS Name	Description	Value
BHS	DIT-E: Dual Induction - E Borehole Status	OPEN
BHS	DSST-B: Dipole Shear Imager - B Borehole Status	OPEN
CASF	Label Casing Function - Monopole P&S	50
COLL	Label Slowness Lower Limit - Monopole P&S Compressional	40 US/F
COUL	Label Slowness Upper Limit - Monopole P&S Compressional	240 US/F
DLCS	Label Compressional Source - Dipole Shear	USE
DSHL	Label Slowness Lower Limit - Dipole Shear	220 US/F
DSHU	Label Slowness Upper Limit - Dipole Shear	1600 US/F
DTCS	Compressional Delta-T Source for DTCS Channel	PS_COMP
DTF	Delta-T Fluid	189 US/F
FILG	Label Fill Gap Control - Monopole P&S	COMP_SHEAR
LFC	Label Formation Character - Monopole P&S	DYNAMIC
LTXG	Lower Dipole Transmitter Geometry	156 IN
MCS	Mean Casing Slowness	57 US/F
MTXG	Monopole Transmitter Geometry	186 IN
NWI1	Number Waveform Items 1	8
NWI2	Number Waveform Items 2	8
NWI4	Number Waveform Items 4	8

NWIX	Number Waveform Items X	0	
RSMN	Label Shear/Compressional Minimum Ratio - Monopole P&S	1.4	
RSMX	Label Shear/Compressional Maximum Ratio - Monopole P&S	2.12	
RX1G	Receiver 1 Geometry	294	IN
RX2G	Receiver 2 Geometry	300	IN
RX3G	Receiver 3 Geometry	306	IN
RX4G	Receiver 4 Geometry	312	IN
RX5G	Receiver 5 Geometry	318	IN
RX6G	Receiver 6 Geometry	324	IN
RX7G	Receiver 7 Geometry	330	IN
RX8G	Receiver 8 Geometry	336	IN
SAS1	STC Sonic Array Status - Lower Dipole	255	
SAS2	STC Sonic Array Status - Upper Dipole	255	
SAS4	STC Sonic Array Status - Monopole P&S	255	
SFM1	STC Filter - Lower Dipole	B1-3K	
SFM2	STC Filter - Upper Dipole	B.3-1.5K	
SHLL	Label Slowness Lower Limit - Monopole P&S Shear	75	US/F
SHUL	Label Slowness Upper Limit - Monopole P&S Shear	240	US/F
SSW1	STC Source Waveform - Lower Dipole	WF_SAM1	
SSW2	STC Source Waveform - Upper Dipole	WF_SAM2	
SSW4	STC Source Waveform - Monopole P&S	WF_SAM4	
STLL	Label Slowness Lower Limit - Monopole Stoneley	220	US/F
STUL	Label Slowness Upper Limit - Monopole Stoneley	1600	US/F
TWI1	STC Integration Time Window - Lower Dipole	1600	US
TWI2	STC Integration Time Window - Upper Dipole	1600	US
TWI4	STC Integration Time Window - Monopole P&S	500	US
UTXG	Upper Dipole Transmitter Geometry	162	IN
BHS	SGT-N: Scintillation Gamma-Ray - N Borehole Status	OPEN	

Format: DSI_Field_Print Vertical Scale: 1:200 Graphics File Created: 10-Oct-2005 22:37

OP System Version: 12C0-301

MCM

DIT-E	12C0-301	DTA-A	12C0-301
DSST-B	12C0-301	SGT-N	12C0-301
DTC-H	12C0-301		

Output DLIS Files

DEFAULT	PI_DSI_007LUP	FN:6	PRODUCER	10-Oct-2005 22:37
---------	---------------	------	----------	-------------------



Repeat Up Log

MAXIS Field Log

Output DLIS Files

DEFAULT	PI_DSI_008LUP	FN:7	PRODUCER	11-Oct-2005 00:04	1601.7 M	1459.2 M
---------	---------------	------	----------	-------------------	----------	----------

OP System Version: 12C0-301

MCM

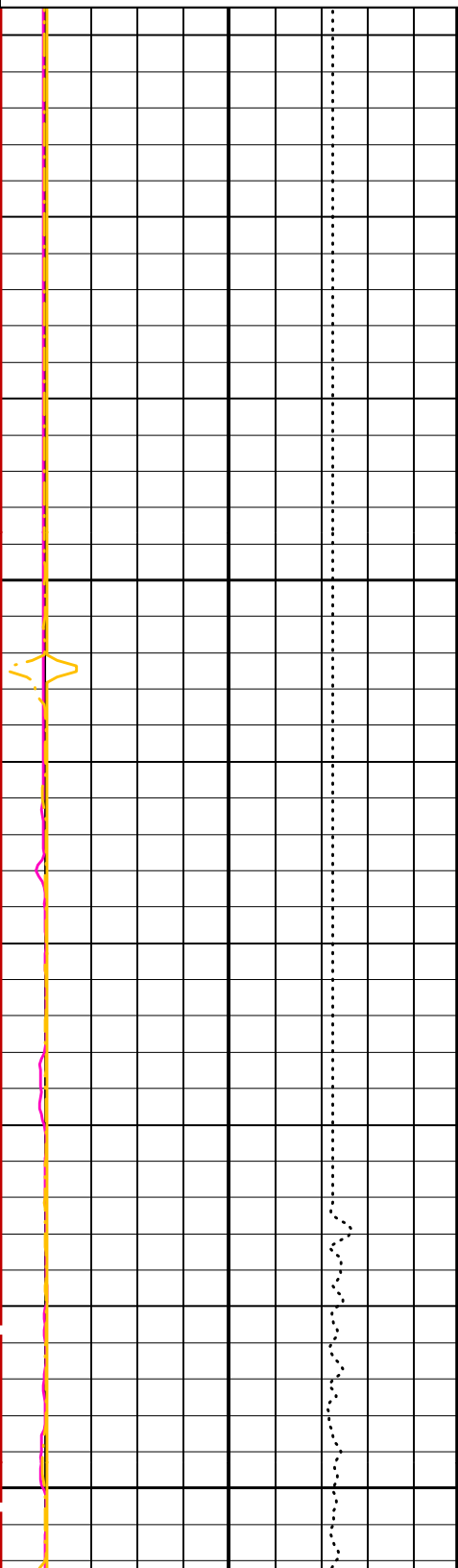
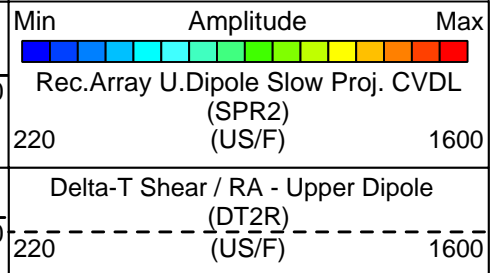
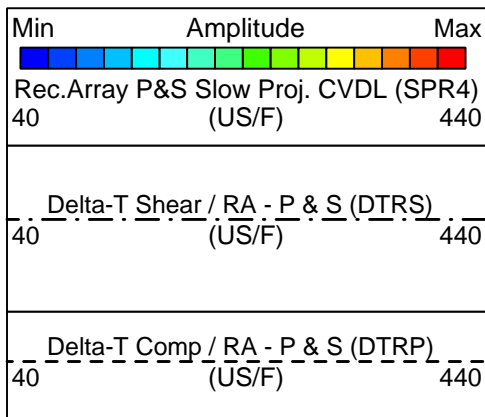
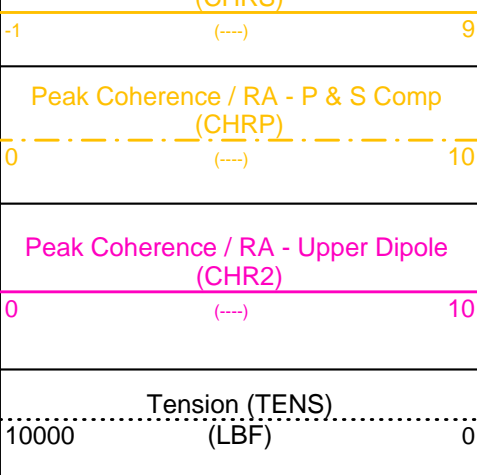
DIT-E	12C0-301	DTA-A	12C0-301
DSST-B	12C0-301	SGT-N	12C0-301
DTC-H	12C0-301		

PIP SUMMARY

Time Mark Every 60 S

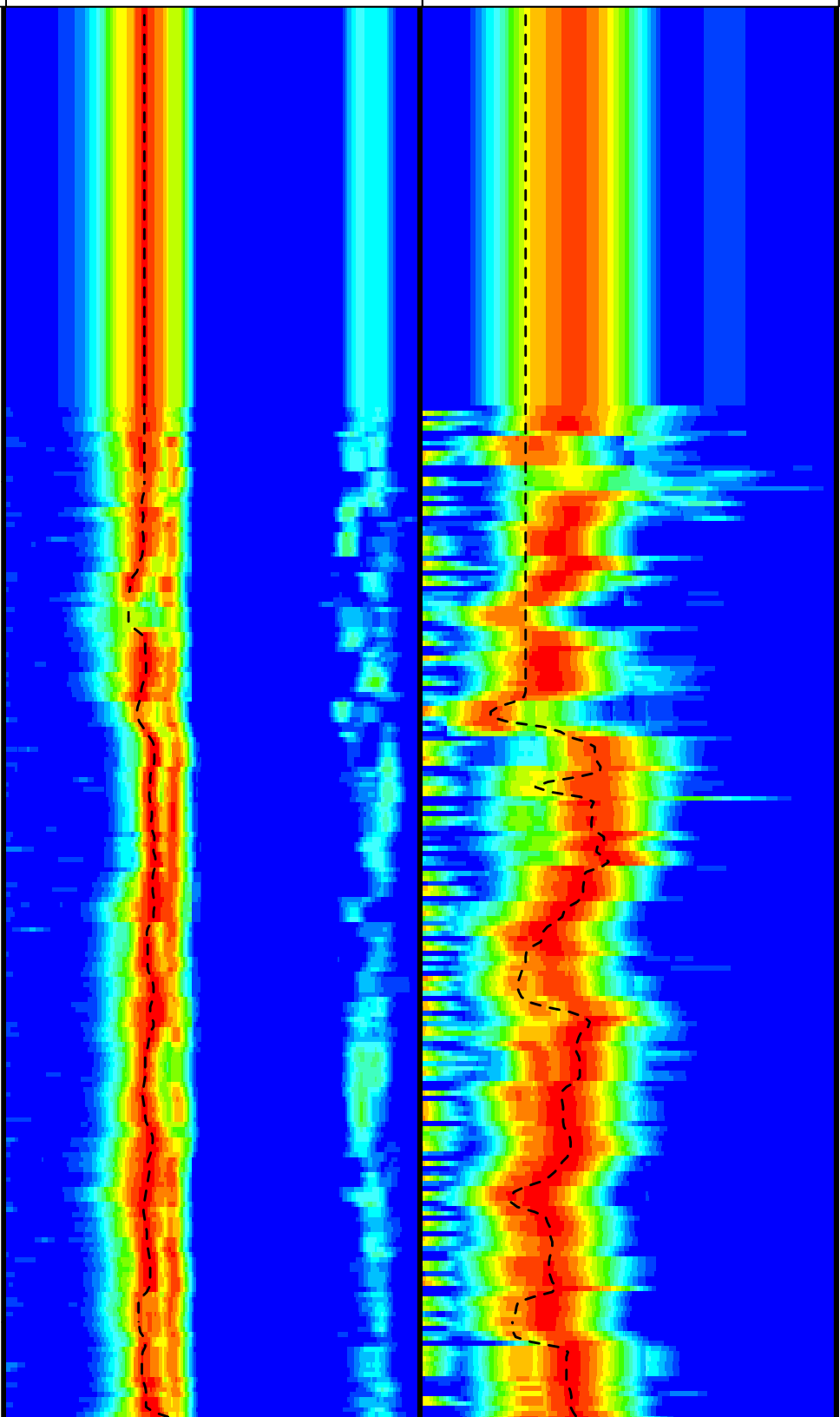
Waveform Data Copy Indicator 4 - Monopole P&S (WCI4)	0	(----	10
--	---	-------	----

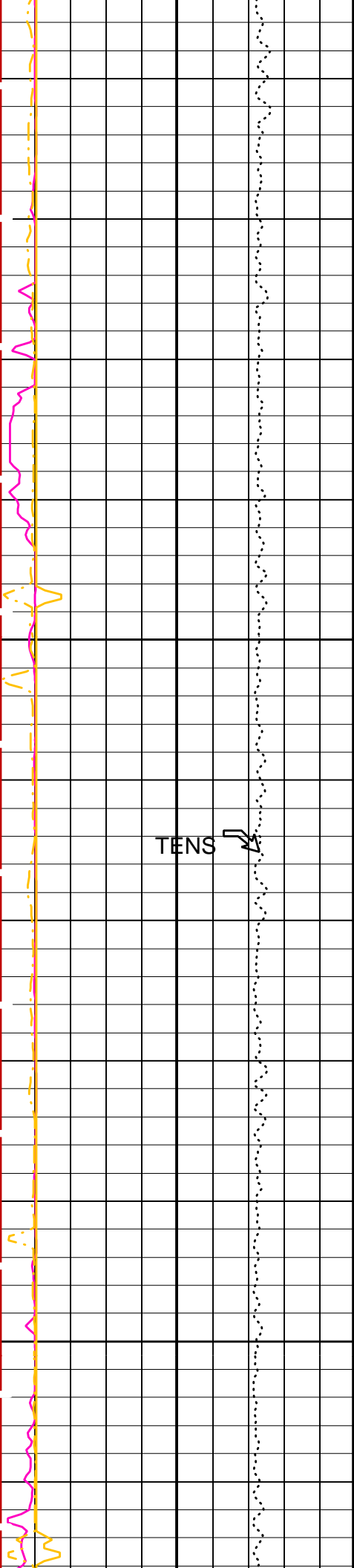
Peak Coherence / RA - P & S Shear (CHRS)			
--	--	--	--



1475

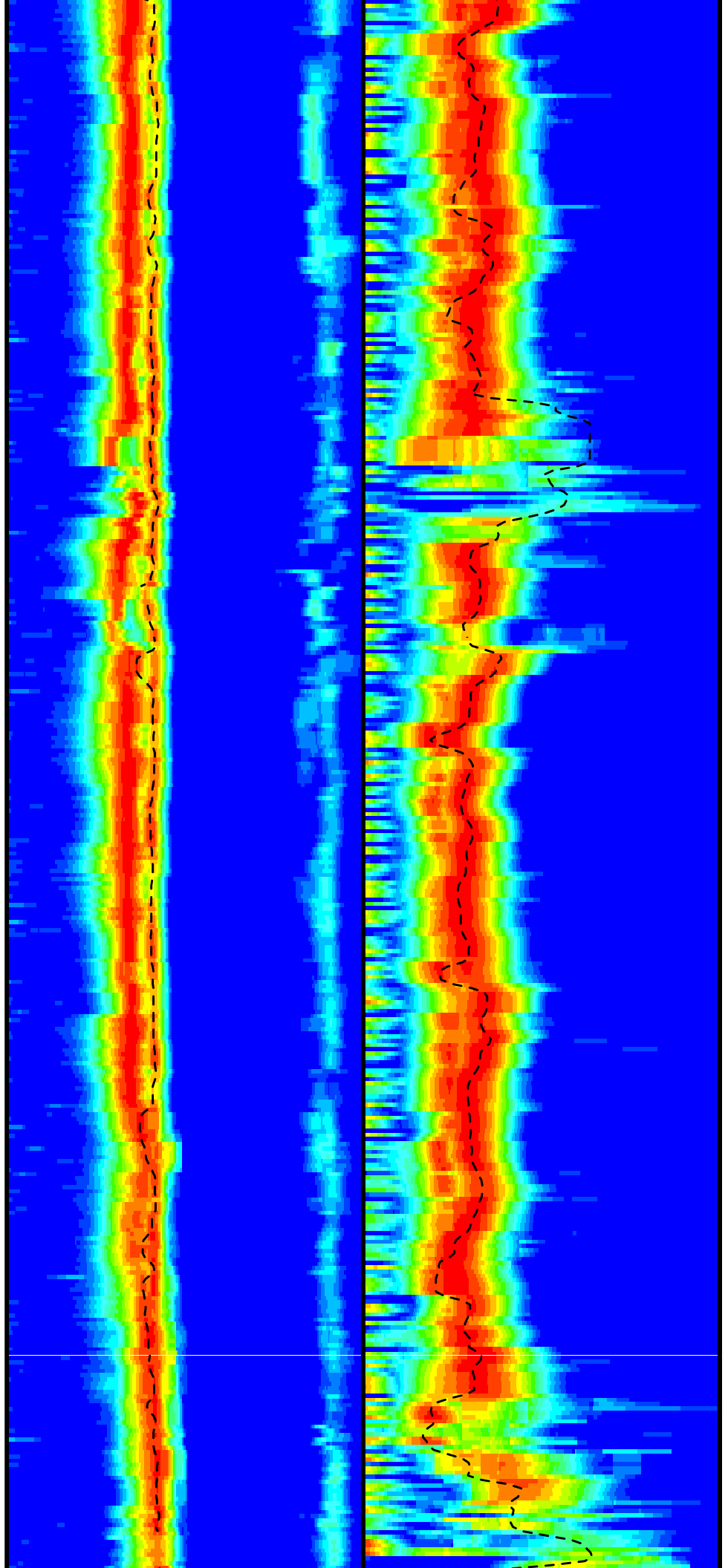
1500

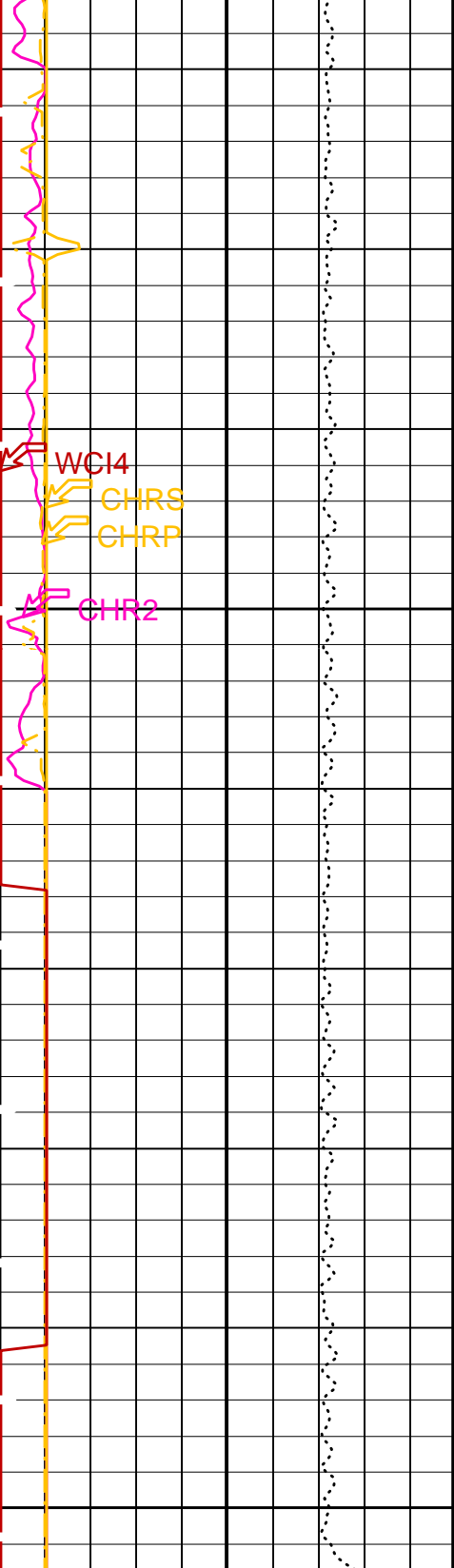




1525

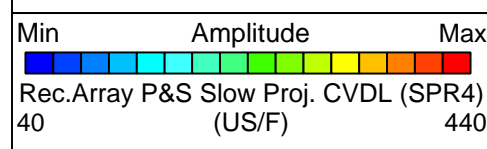
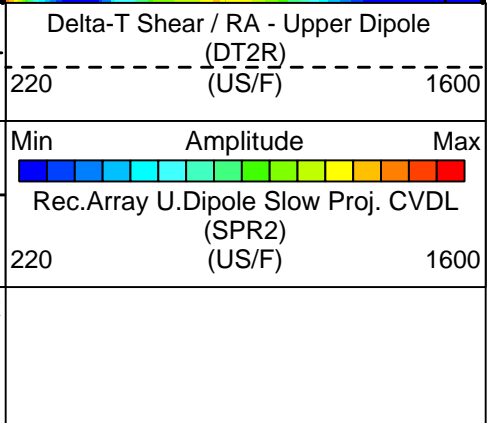
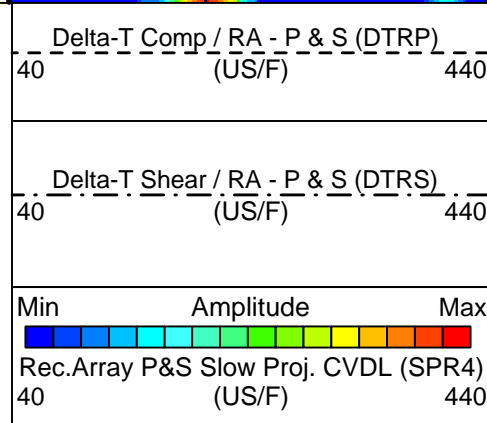
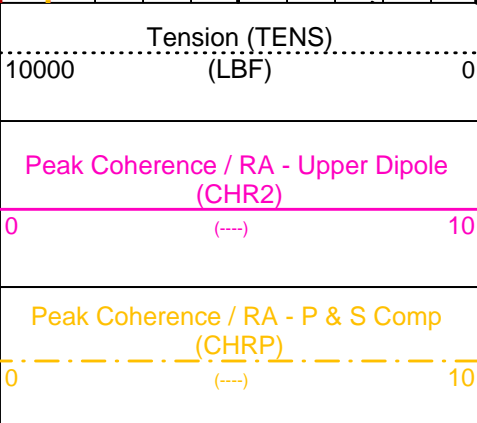
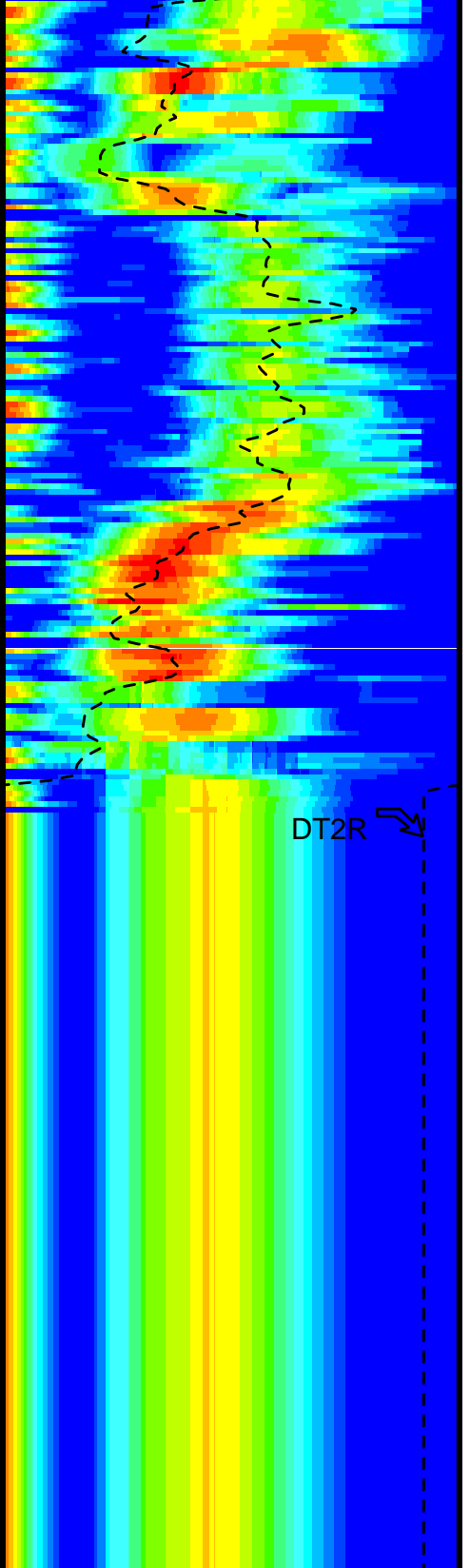
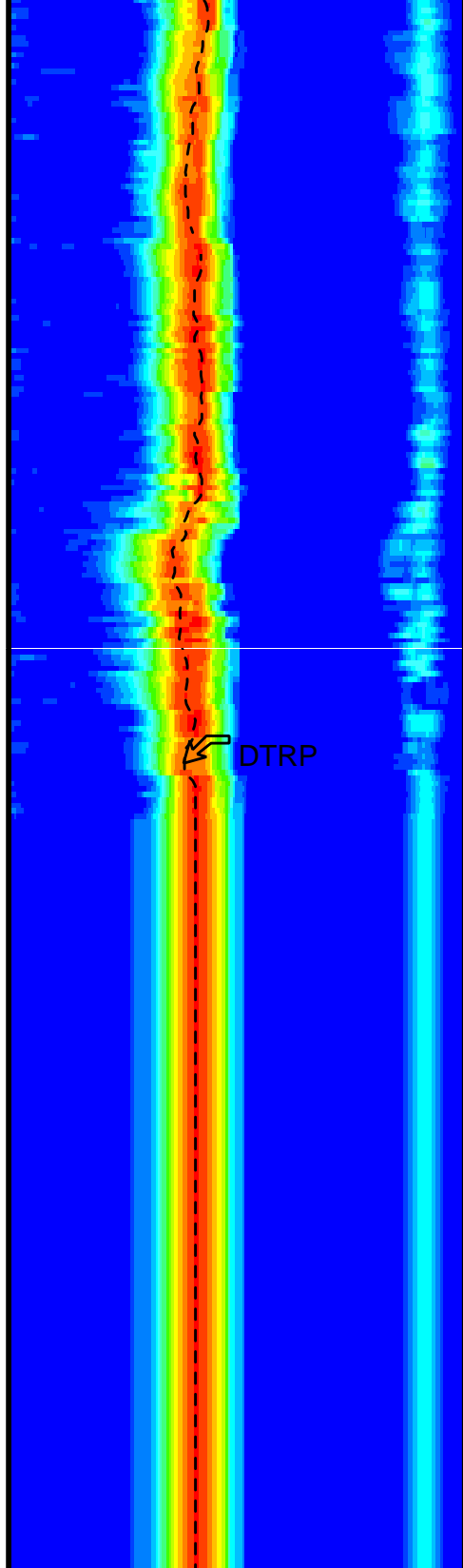
1550





1575

1600



PIP SUMMARY

Time Mark Every 60 S

Parameters

DLIS Name	Description	Value	
BHS	DIT-E: Dual Induction - E Borehole Status	OPEN	
BHS	DSST-B: Dipole Shear Imager - B Borehole Status	OPEN	
CASF	Label Casing Function - Monopole P&S	50	
COLL	Label Slowness Lower Limit - Monopole P&S Compressional	40	US/F
COUL	Label Slowness Upper Limit - Monopole P&S Compressional	240	US/F
DDE2	Digitizing Delay 2	0	US
DDE4	Digitizing Delay 4	0	US
DDEX	Digitizing Delay X	0	US
DLCS	Label Compressional Source - Dipole Shear	USE	
DSHL	Label Slowness Lower Limit - Dipole Shear	220	US/F
DSHU	Label Slowness Upper Limit - Dipole Shear	1600	US/F
DSI2	Digitizer Sample Interval 2	40	US
DSI4	Digitizer Sample Interval 4	10	US
DSIX	Digitizer Sample Interval X	40	US
DTCS	Compressional Delta-T Source for DTCO Channel	PS_COMP	
DTF	Delta-T Fluid	189	US/F
DWC2	Digitizer Word Count 2	512	
DWC4	Digitizer Word Count 4	512	
DWCX	Digitizer Word Count X	512	
FILG	Label Fill Gap Control - Monopole P&S	COMP_SHEAR	
LFC	Label Formation Character - Monopole P&S	DYNAMIC	
MCS	Mean Casing Slowness	57	US/F
MTXG	Monopole Transmitter Geometry	186	IN
NWI2	Number Waveform Items 2	8	
NWI4	Number Waveform Items 4	8	
NWIX	Number Waveform Items X	0	
RSMN	Label Shear/Compressional Minimum Ratio - Monopole P&S	1.4	
RSMX	Label Shear/Compressional Maximum Ratio - Monopole P&S	2.12	
RX1G	Receiver 1 Geometry	294	IN
RX2G	Receiver 2 Geometry	300	IN
RX3G	Receiver 3 Geometry	306	IN
RX4G	Receiver 4 Geometry	312	IN
RX5G	Receiver 5 Geometry	318	IN
RX6G	Receiver 6 Geometry	324	IN
RX7G	Receiver 7 Geometry	330	IN
RX8G	Receiver 8 Geometry	336	IN
SAM2	DSST Sonic Acquisition Mode 2 - Upper Dipole Mode	LFD_ODD	
SAM4	DSST Sonic Acquisition Mode 4 - High Frequency Monopole Mode for P&S	MFD_EVEN	
SAMX	DSST Sonic Acquisition Mode X - Both Dipoles or Monopole Mode for Expert	OFF	
SAS2	STC Sonic Array Status - Upper Dipole	255	
SAS4	STC Sonic Array Status - Monopole P&S	255	
SBO2	STC Search Band Offset - Upper Dipole	3000	US
SBO4	STC Search Band Offset - Monopole P&S	500	US
SBR4	STC Baseline Removal - Monopole P&S	ON	
SBW2	STC Search Bandwidth - Upper Dipole	8000	US
SBW4	STC Search Bandwidth - Monopole P&S	2000	US
SFC2	STC Formation Character - Upper Dipole	SELECTABLE	
SFC4	STC Formation Character - Monopole P&S	SELECTABLE	
SFM2	STC Filter - Upper Dipole	B.3-1.5K	
SFM4	STC Filter - Monopole P&S	B3-12K	
SHLL	Label Slowness Lower Limit - Monopole P&S Shear	75	US/F
SHUL	Label Slowness Upper Limit - Monopole P&S Shear	240	US/F
SLL2	STC Slowness Lower Limit - Upper Dipole	220	US/F
SLL4	STC Slowness Lower Limit - Monopole P&S	40	US/F
SST2	STC Slowness Step - Upper Dipole	4	US/F
SST4	STC Slowness Step - Monopole P&S	2	US/F
SSW2	STC Source Waveform - Upper Dipole	WF_SAM2	
SSW4	STC Source Waveform - Monopole P&S	WF_SAM4	
STLL	Label Slowness Lower Limit - Monopole Stoneley	220	US/F
STUL	Label Slowness Upper Limit - Monopole Stoneley	1600	US/F
SUL2	STC Slowness Upper Limit - Upper Dipole	1600	US/F
SUL4	STC Slowness Upper Limit - Monopole P&S	440	US/F
SWD2	STC Slowness Width - Upper Dipole	40	US/F
SWD4	STC Slowness Width - Monopole P&S	10	US/F

TBF2	STC Time for Baseline Fill - Upper Dipole	0	US
TBF4	STC Time for Baseline Fill - Monopole P&S	300	US
TLL2	STC Time Lower Limit - Upper Dipole	1420	US
TLL4	STC Time Lower Limit - Monopole P&S	150	US
TST2	STC Time Step - Upper Dipole	200	US
TST4	STC Time Step - Monopole P&S	50	US
TUL2	STC Time Upper Limit - Upper Dipole	20440	US
TUL4	STC Time Upper Limit - Monopole P&S	5110	US
TWD2	STC Time Width - Upper Dipole	2000	US
TWD4	STC Time Width - Monopole P&S	1000	US
TWI2	STC Integration Time Window - Upper Dipole	1600	US
TWI4	STC Integration Time Window - Monopole P&S	500	US
TWSX	Transmitter Waveform Select X	0	
UTXG	Upper Dipole Transmitter Geometry	162	IN
WFM4	Waveform Mode 4	W1	
BHS	SGT-N: Scintillation Gamma-Ray - N Borehole Status		OPEN

Format: DSST_P_S_UPPER_VDL_COLOR Vertical Scale: 1:200 Graphics File Created: 11-Oct-2005 00:04

OP System Version: 12C0-301

MCM

DIT-E	12C0-301	DTA-A	12C0-301
DSST-B	12C0-301	SGT-N	12C0-301
DTC-H	12C0-301		

Output DLIS Files

DEFAULT	PI_DSI_008LUP	FN:7	PRODUCER	11-Oct-2005 00:04
---------	---------------	------	----------	-------------------

Output DLIS Files

DEFAULT	PI_DSI_008LUP	FN:7	PRODUCER	11-Oct-2005 00:04	1601.7 M	1459.2 M
---------	---------------	------	----------	-------------------	----------	----------

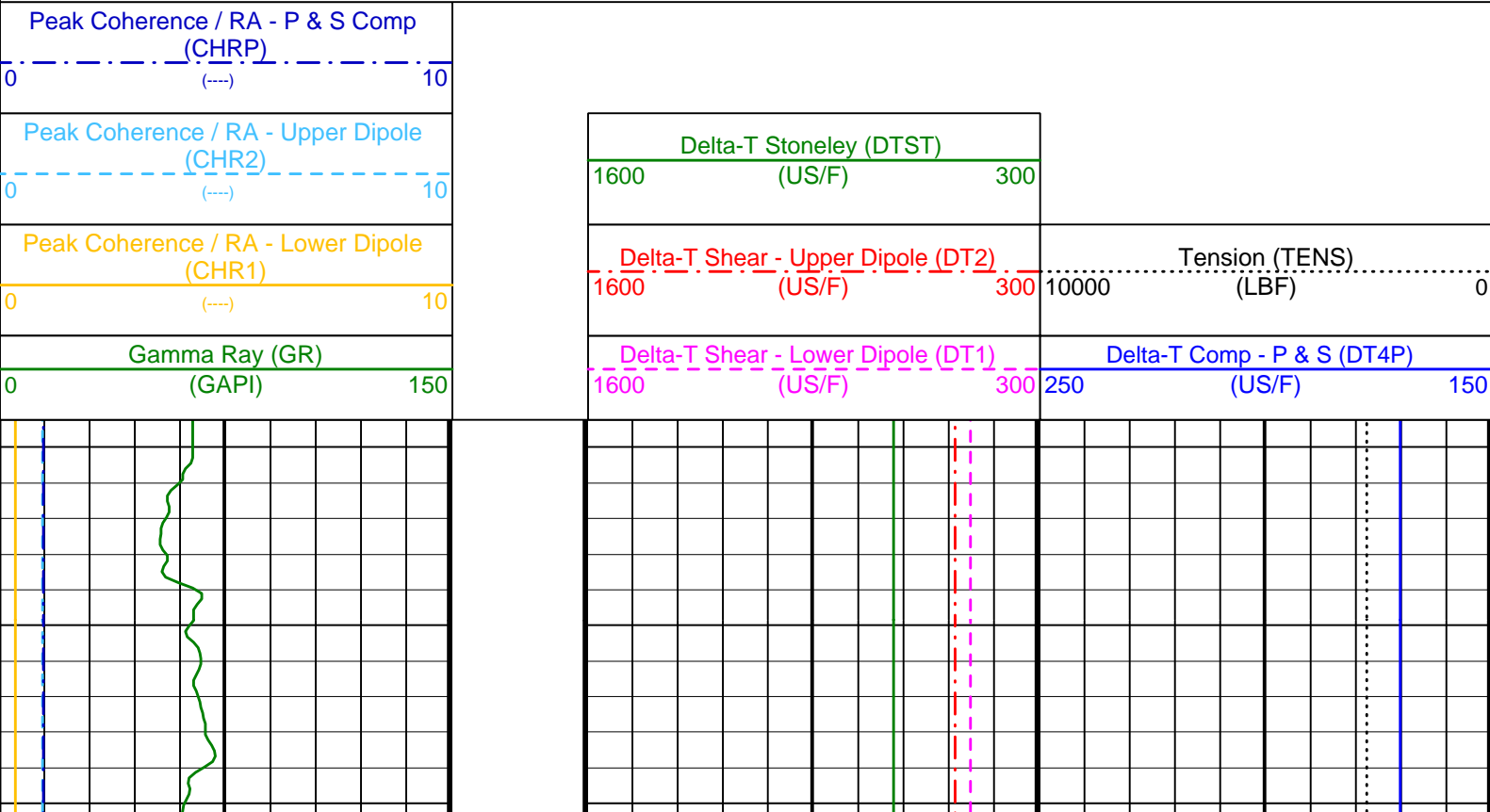
OP System Version: 12C0-301

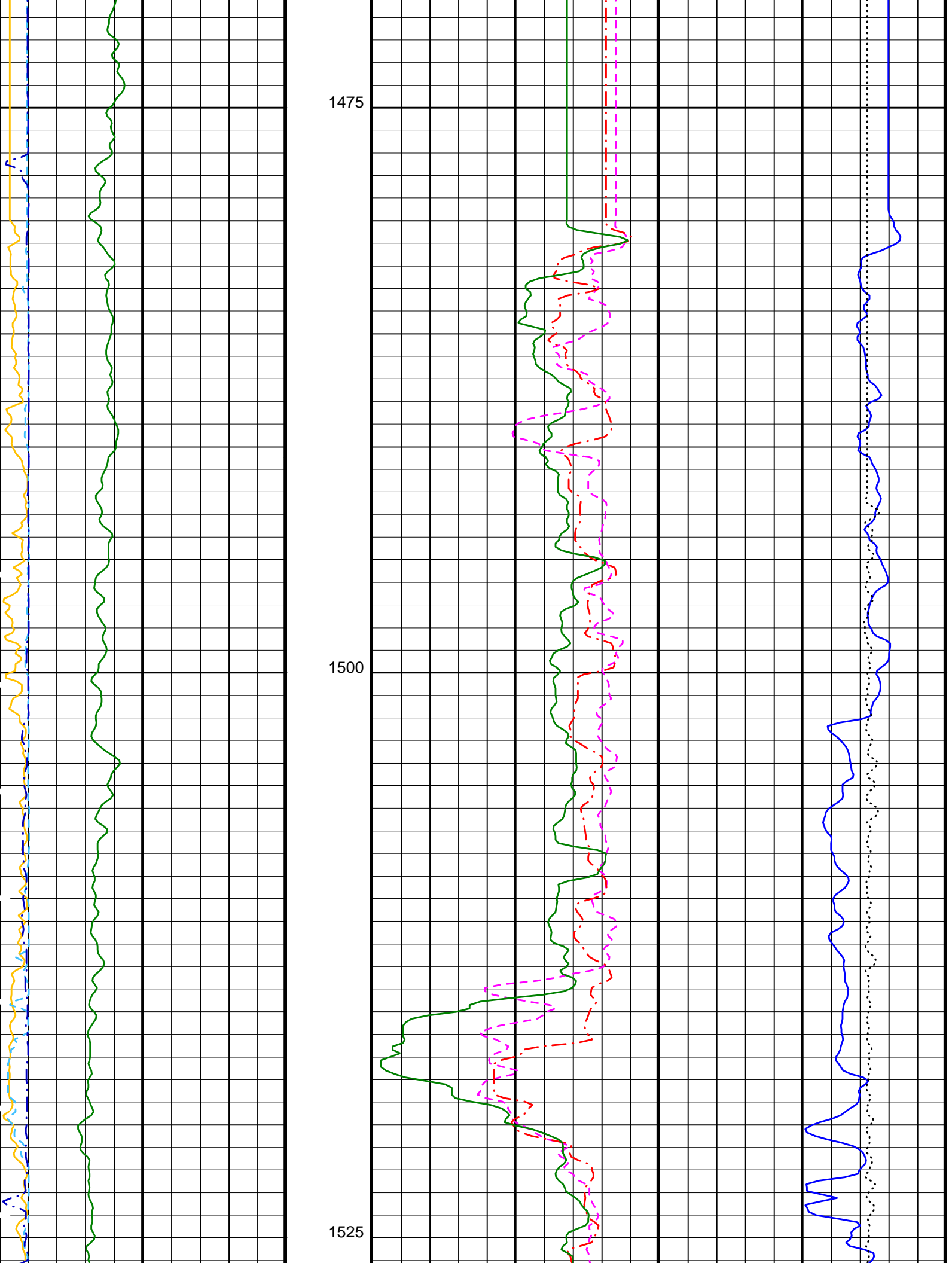
MCM

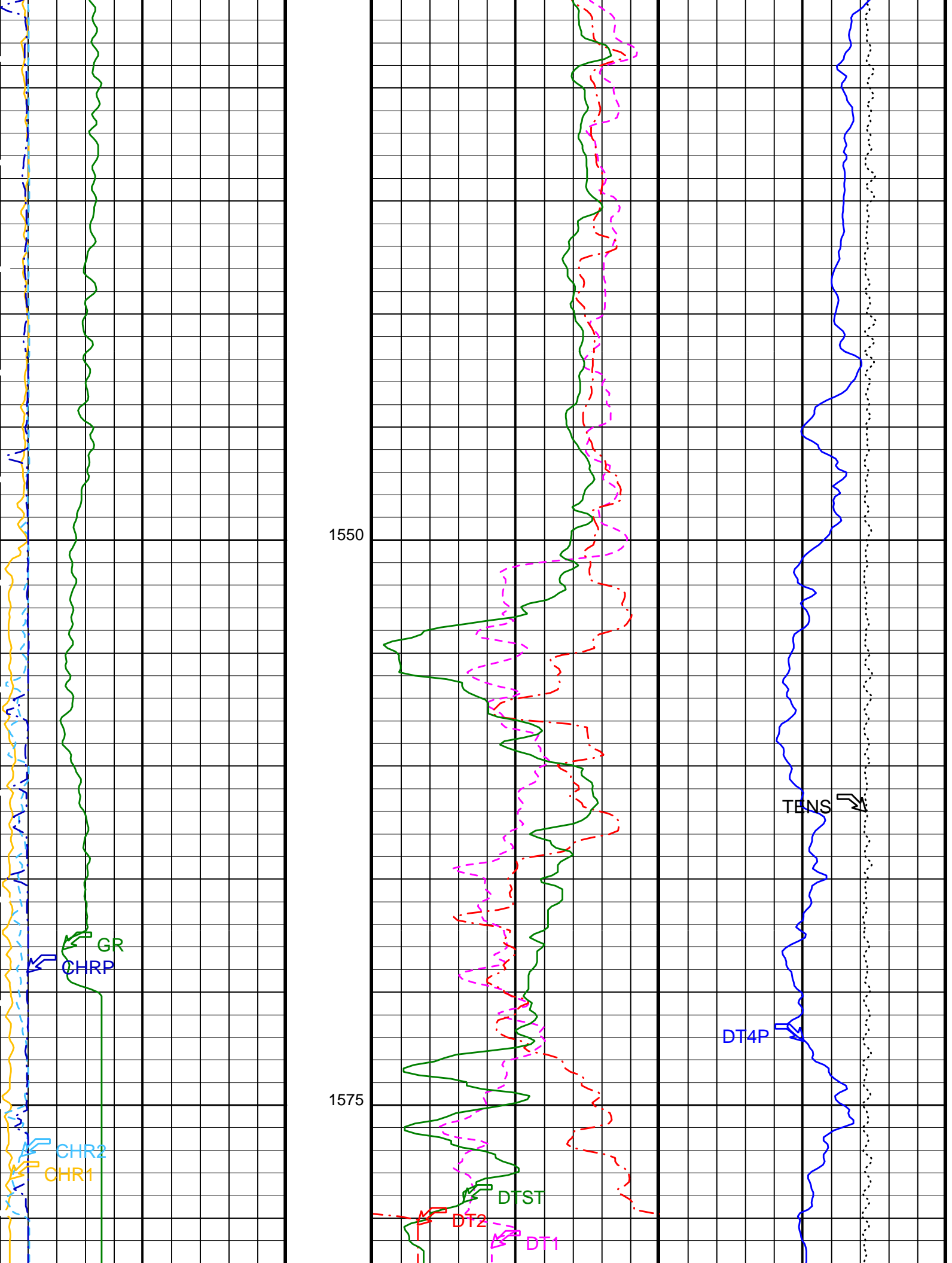
DIT-E	12C0-301	DTA-A	12C0-301
DSST-B	12C0-301	SGT-N	12C0-301
DTC-H	12C0-301		

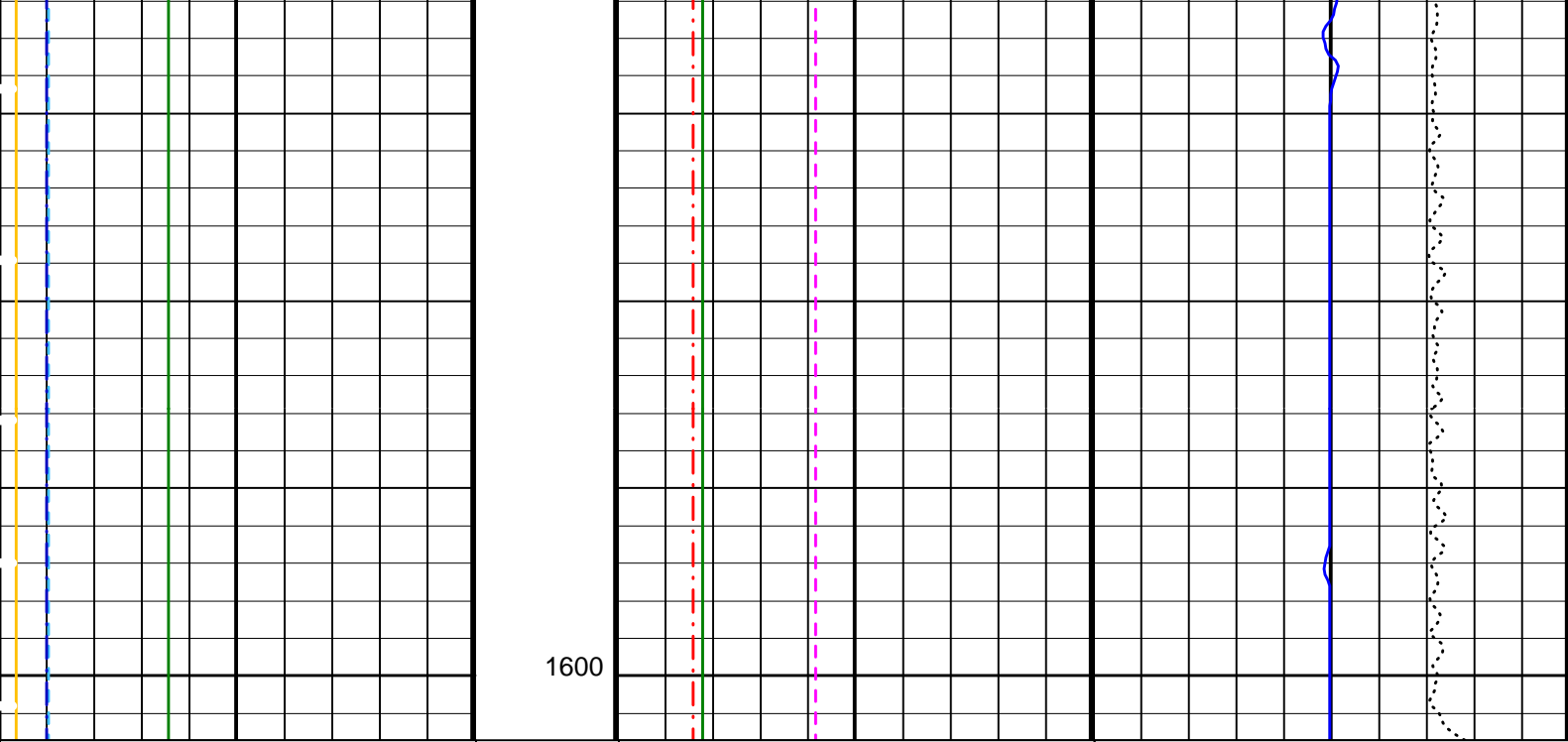
PIP SUMMARY

Time Mark Every 60 S









Gamma Ray (GR) (GAPI)	0	150	Delta-T Shear - Lower Dipole (DT1) (US/F)	1600	300	Delta-T Comp - P & S (DT4P) (US/F)	250	150
Peak Coherence / RA - Lower Dipole (CHR1)	0	10	Delta-T Shear - Upper Dipole (DT2) (US/F)	1600	300	Tension (TENS) (LBF)	10000	0
Peak Coherence / RA - Upper Dipole (CHR2)	0	10	Delta-T Stoneley (DTST) (US/F)	1600	300			
Peak Coherence / RA - P & S Comp (CHRP)	0	10						

PIP SUMMARY

Time Mark Every 60 S

Parameters

DLIS Name	Description	Value
BHS	DIT-E: Dual Induction - E Borehole Status	OPEN
BHS	DSST-B: Dipole Shear Imager - B Borehole Status	OPEN
CASF	Label Casing Function - Monopole P&S	50
COLL	Label Slowness Lower Limit - Monopole P&S Compressional	40 US/F
COUL	Label Slowness Upper Limit - Monopole P&S Compressional	240 US/F
DLCS	Label Compressional Source - Dipole Shear	USE
DSHL	Label Slowness Lower Limit - Dipole Shear	220 US/F
DSHU	Label Slowness Upper Limit - Dipole Shear	1600 US/F
DTCS	Compressional Delta-T Source for DTCS Channel	PS_COMP
DTF	Delta-T Fluid	189 US/F
FILG	Label Fill Gap Control - Monopole P&S	COMP_SHEAR
LFC	Label Formation Character - Monopole P&S	DYNAMIC
LTXG	Lower Dipole Transmitter Geometry	156 IN
MCS	Mean Casing Slowness	57 US/F
MTXG	Monopole Transmitter Geometry	186 IN
NWI1	Number Waveform Items 1	8
NWI2	Number Waveform Items 2	8
NWI4	Number Waveform Items 4	8
NWIX	Number Waveform Items X	0
RSMN	Label Shear/Compressional Minimum Ratio - Monopole P&S	1.4
RSMX	Label Shear/Compressional Maximum Ratio - Monopole P&S	2.12
RX1G	Receiver 1 Geometry	294 IN
RX2G	Receiver 2 Geometry	300 IN
RX3G	Receiver 3 Geometry	306 IN
RX4G	Receiver 4 Geometry	312 IN
RX5G	Receiver 5 Geometry	318 IN

RX6G	Receiver 6 Geometry	324	IN
RX7G	Receiver 7 Geometry	330	IN
RX8G	Receiver 8 Geometry	336	IN
SAS1	STC Sonic Array Status - Lower Dipole	255	
SAS2	STC Sonic Array Status - Upper Dipole	255	
SAS4	STC Sonic Array Status - Monopole P&S	255	
SFM1	STC Filter - Lower Dipole	B1-3K	
SFM2	STC Filter - Upper Dipole	B.3-1.5K	
SHLL	Label Slowness Lower Limit - Monopole P&S Shear	75	US/F
SHUL	Label Slowness Upper Limit - Monopole P&S Shear	240	US/F
SSW1	STC Source Waveform - Lower Dipole	WF_SAM1	
SSW2	STC Source Waveform - Upper Dipole	WF_SAM2	
SSW4	STC Source Waveform - Monopole P&S	WF_SAM4	
STLL	Label Slowness Lower Limit - Monopole Stoneley	220	US/F
STUL	Label Slowness Upper Limit - Monopole Stoneley	1600	US/F
TWI1	STC Integration Time Window - Lower Dipole	1600	US
TWI2	STC Integration Time Window - Upper Dipole	1600	US
TWI4	STC Integration Time Window - Monopole P&S	500	US
UTXG	Upper Dipole Transmitter Geometry	162	IN
BHS	SGT-N: Scintillation Gamma-Ray - N Borehole Status	OPEN	

Format: DSI_Field_Print Vertical Scale: 1:200 Graphics File Created: 11-Oct-2005 00:04

OP System Version: 12C0-301

MCM

DIT-E	12C0-301	DTA-A	12C0-301
DSST-B	12C0-301	SGT-N	12C0-301
DTC-H	12C0-301		

Output DLIS Files

DEFAULT PI_DSI_008LUP FN:7 PRODUCER 11-Oct-2005 00:04

Company: Lamont Doherty

Schlumberger

Well: IODP EXP 311 U1327E

Field: CAS-01B

Country: Canada

Ocean: Pacific

Dipole Sonic