



Company: **Lamont Doherty**

Well: **Expedition 330 Site U1376A**

Field: **Louisville Seamounds**

Rig: **JOIDES Resolution** Ocean: **Pacific**

Run 1

Run 2

Run 3

**Borehole Profile**  
**Natural Gamma Ray**

Rig: JOIDES Resolution  
Field: Louisville Seamounds  
Location: Latitude: S 32.2165 Deg  
Well: Expedition 330 Site U1376A  
Company: Lamont Doherty

LOCATION		Latitude: S 32.2165 Deg		Elev.: K.B. -1514.00 m	
		Longitude: W 171.88067 Deg		G.L. 0.00 m	
		Permanent Datum: Sea Floor		Elev.: 0.00 m	
		Log Measured From: Sea Floor		-1514.00 m above Perm. Datum	
		Drilling Measured From: Sea Floor			
API Serial No.		Max. Hole Devi.	Longitude	Latitude	
		0 deg	W 171.88*	S 32.21 *	

Logging Date		3-Feb-2011			
Run Number		1			
Depth Driller		183 m			
Schlumberger Depth		182 m			
Bottom Log Interval		150 m			
Top Log Interval		0 m			
Casing Driller Size @ Depth		4.500 in @ 80 m		@	
Casing Schlumberger		80 m			
Bit Size		9.875 in			
Type Fluid In Hole		Seawater			
MUD	Density	Viscosity	1.258 g/cm3		
	Fluid Loss	PH			
	Source Of Sample		N/A		
RM @ Measured Temperature		@		@	
RMF @ Measured Temperature		@		@	
RMC @ Measured Temperature		@		@	
Source RMF	RMC	N/A	N/A		
RM @ MRT	RMF @ MRT	@ 6	@ 6	@	@
Maximum Recorded Temperatures		6 degC			
Circulation Stopped	Time	1-Feb-2011	0:00		
Logger On Bottom	Time	3-Feb-2011	1:34		
Unit Number	Location	625003	Houston		
Recorded By		K. Swain			
Witnessed By		L. Anderson, S. Ehmann			

Logging Date					
Run Number					
Depth Driller					
Schlumberger Depth					
Bottom Log Interval					
Top Log Interval					
Casing Driller Size @ Depth				@	
Casing Schlumberger					
Bit Size					
Type Fluid In Hole					
MUD	Density	Viscosity			
	Fluid Loss	PH			
	Source Of Sample				
RM @ Measured Temperature				@	
RMF @ Measured Temperature				@	
RMC @ Measured Temperature				@	
Source RMF	RMC				
RM @ MRT	RMF @ MRT	@	@	@	@
Maximum Recorded Temperatures					
Circulation Stopped	Time				
Logger On Bottom	Time				
Unit Number	Location				
Recorded By					
Witnessed By					

### DISCLAIMER

THE USE OF AND RELIANCE UPON THIS RECORDED-DATA BY THE HEREIN NAMED COMPANY (AND ANY OF ITS AFFILIATES, PARTNERS, REPRESENTATIVES, AGENTS, CONSULTANTS AND EMPLOYEES) IS SUBJECT TO THE TERMS AND CONDITIONS AGREED UPON BETWEEN SCHLUMBERGER AND THE COMPANY, INCLUDING: (a) RESTRICTIONS ON USE OF THE RECORDED-DATA; (b) DISCLAIMERS AND WAIVERS OF WARRANTIES AND REPRESENTATIONS REGARDING COMPANY'S USE OF AND RELIANCE UPON THE RECORDED-DATA; AND (c) CUSTOMER'S FULL AND SOLE RESPONSIBILITY FOR ANY INFERENCE DRAWN OR DECISION MADE IN CONNECTION WITH THE USE OF THIS RECORDED-DATA.

**OTHER SERVICES1**

OS1: DITE/HLDS  
OS2: FMS/DSI  
OS3: HNGS  
OS4: GBM  
OS5:

**OTHER SERVICES2**

OS1:  
OS2:  
OS3:  
OS4:  
OS5:

**REMARKS: RUN NUMBER 1**

Depths originally recorded from drill floor as main depth reference. Log files were played back with offset of -1514m to force sea floor as the new reference. This log references seafloor at 0m. Td of hole at 183m (driller), 181m (log). Tools run inside drill pipe and drill collars 9 7/8" bs. Bit released prior to logging. Active Heave Compensator used on all logs. MCD centralizers run with DSI to provide centering.

**REMARKS: RUN NUMBER 2**

**RUN 1**

SERVICE ORDER #: 17C0-154  
PROGRAM VERSION:  
FLUID LEVEL:

LOGGED INTERVAL	START	STOP

**RUN 2**

SERVICE ORDER #:  
PROGRAM VERSION:  
FLUID LEVEL:

LOGGED INTERVAL	START	STOP

## EQUIPMENT DESCRIPTION

**RUN 1**

**RUN 2**

**SURFACE EQUIPMENT**

GSR-U 616008  
WITM (DTS)-A

**DOWNHOLE EQUIPMENT**

LEH-QT 34.36

LEH-QT 301

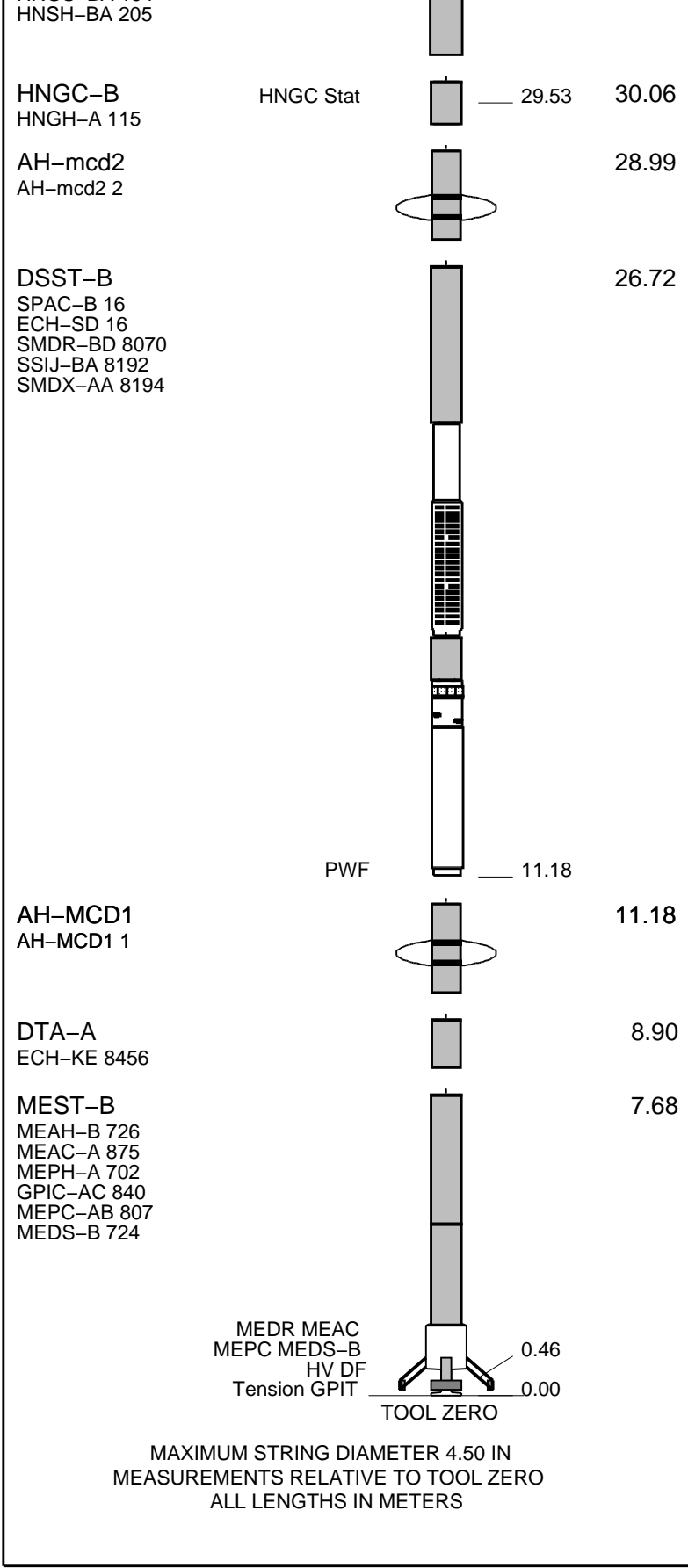
CTEM  
TelStatus 33.20

DTC-H 33.47

ECH-KC 1777 32.56

HNGS-BA 32.56

HNGS-BA 194 31.86  
Lower\_2 31.65



Production String	(in)	(M)	Well Schematic	(M)	(in)	Casing String
	OD	ID		MD	MD	

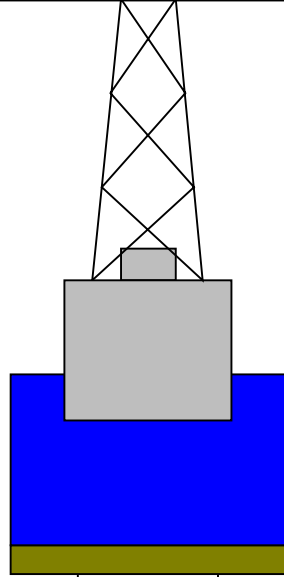
Kelly Bushing Elevation  
Derrick Floor Elevation

Mean Sea Level

-1514

-1514

-1508



4.1



0

80

182

4.1

9.875

Sea Floor

Open Hole

Total Depth

### Input DLIS Files

DEFAULT	FMS_DSI_NGS_032PUP	FN:48	PRODUCER	03-Feb-2011 08:31	1693.9 M	1478.4 M
---------	--------------------	-------	----------	-------------------	----------	----------

### Output DLIS Files

DEFAULT	FMS_DSI_NGS_054PUP	FN:12	PRODUCER	11-Feb-2011 12:31	179.8 M	-35.5 M
---------	--------------------	-------	----------	-------------------	---------	---------

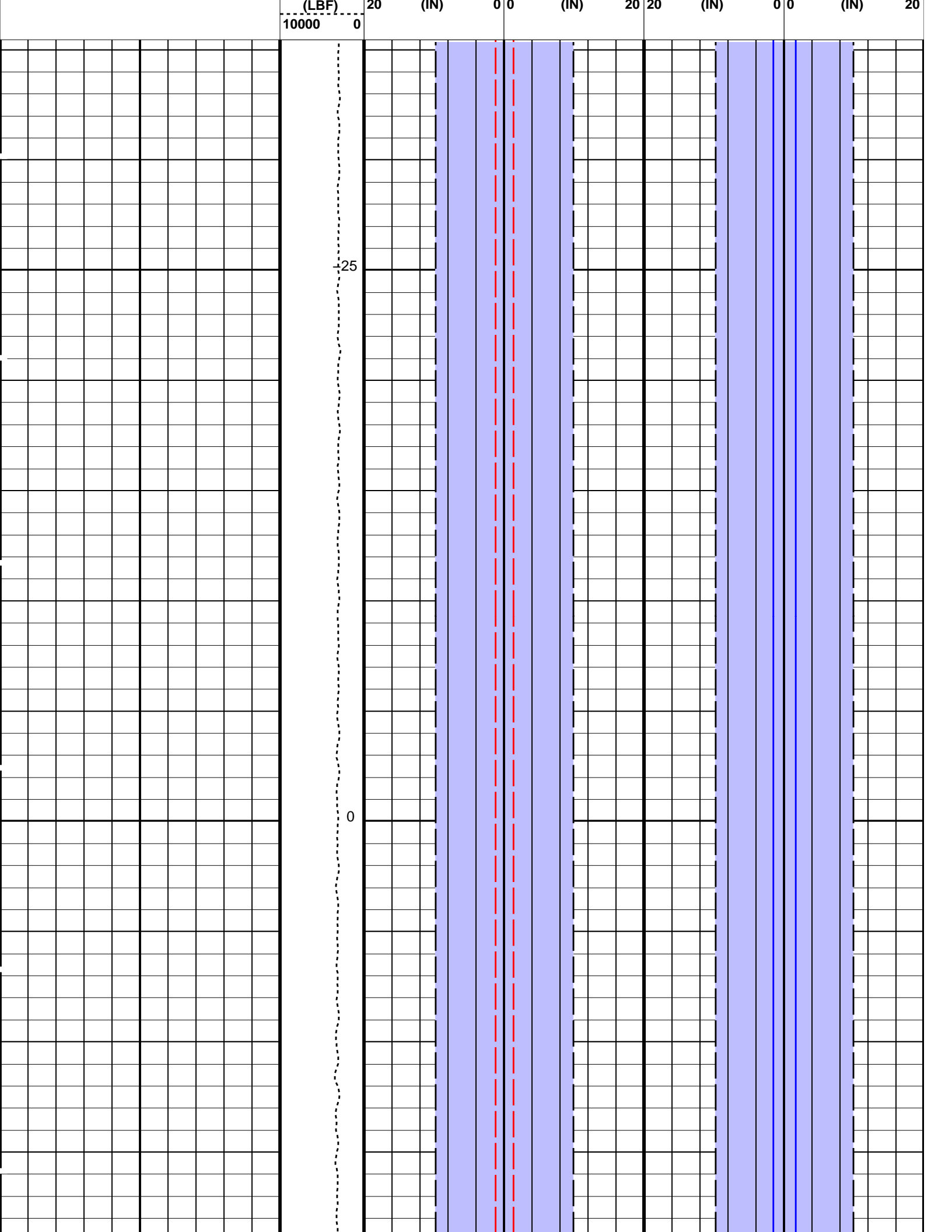
### OP System Version: 17C0-154

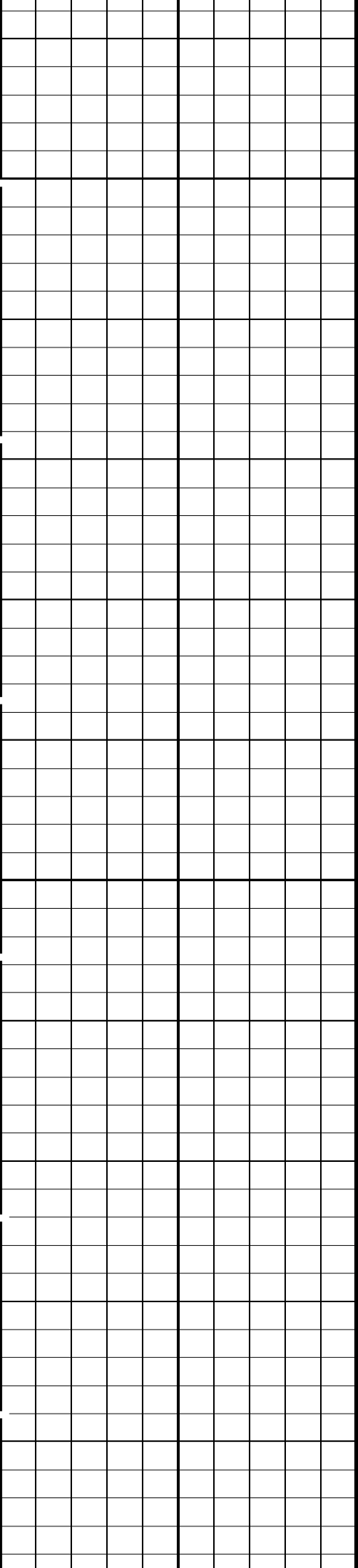
MEST-B	SRPC-3971-Q1_2010_OP17	DTA-A	17C0-154
DSST-B	17C0-154	HNGC-B	SPC-3961-OP17_NUCL
HNGS-BA	SPC-3961-OP17_NUCL	DTC-H	17C0-154

### PIP SUMMARY

Time Mark Every 60 S

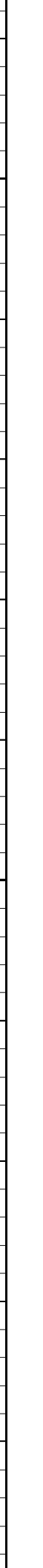
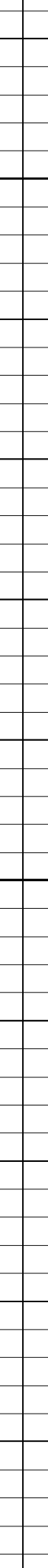
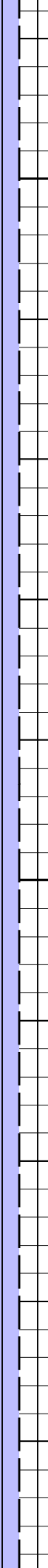
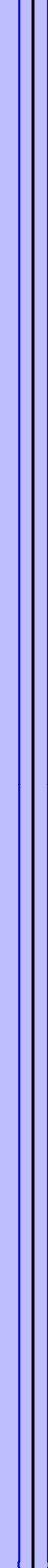
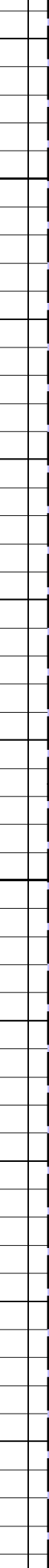
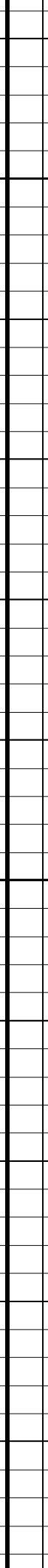
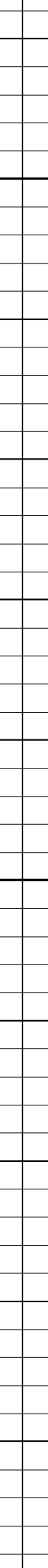
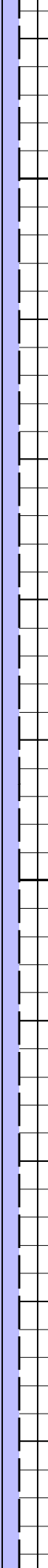
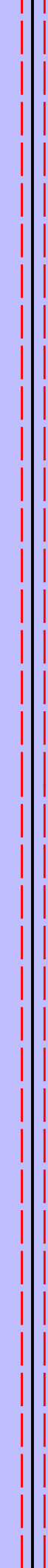
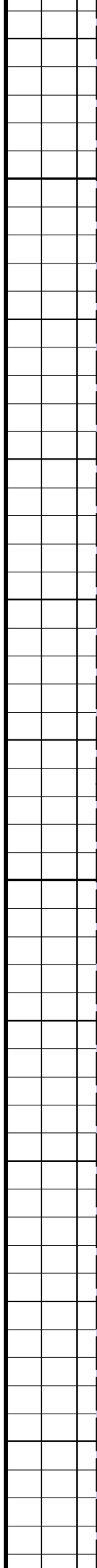
	Area From BS to BS_1		Area From BS_3 to BS_2	
	Area From C1 to BS	Area From BS_1 to C1_1	Area From C2 to BS_3	Area From BS_2 to C2_1
	Caliper 1 (C1)	Caliper 1 (C1)	Caliper 2 (C2)	Caliper 2 (C2)
	20 (IN)	0 0 (IN)	20 (IN)	0 0 (IN)
Tension (TENS)	Bit Size (BS)	Bit Size (BS)	Bit Size (BS)	Bit Size (BS)

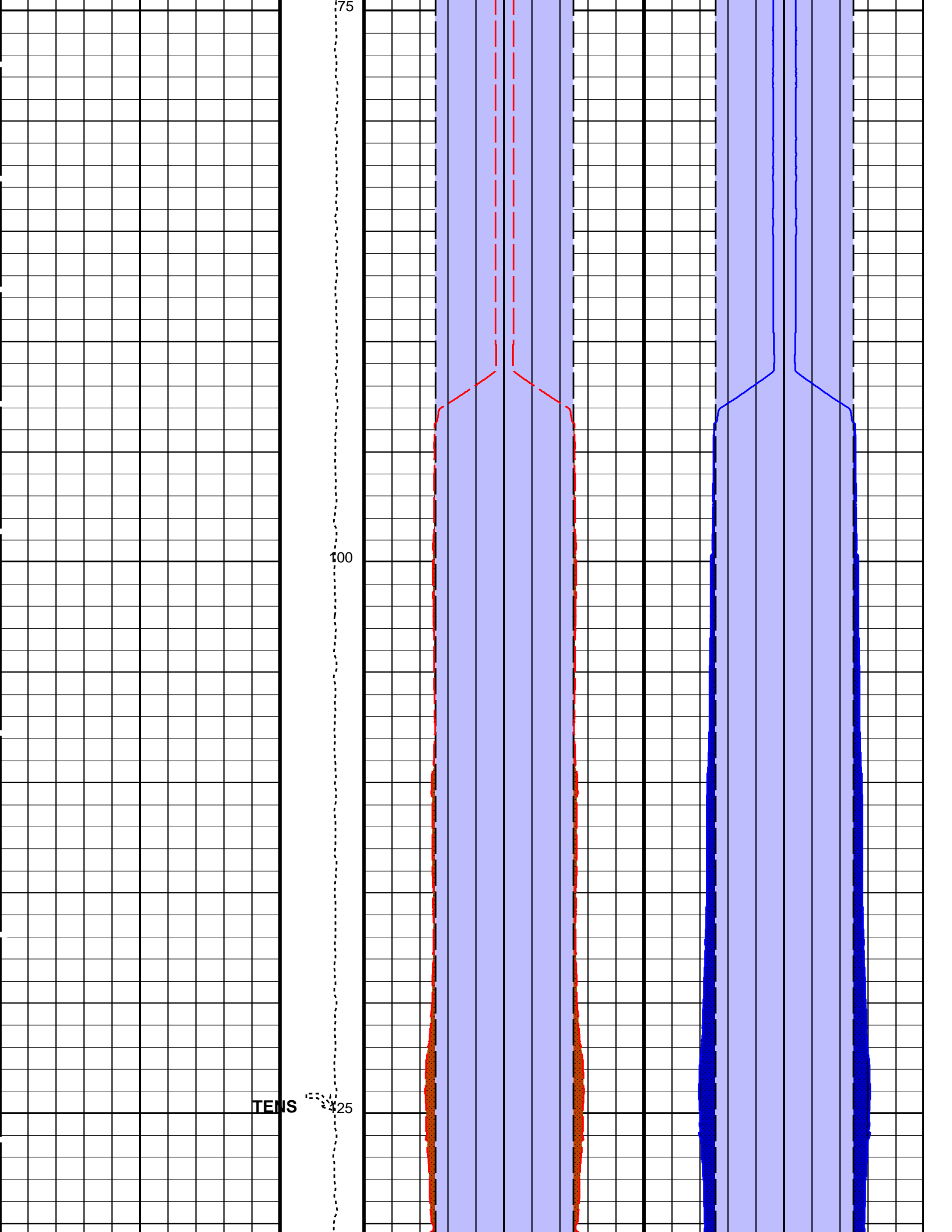




25

50





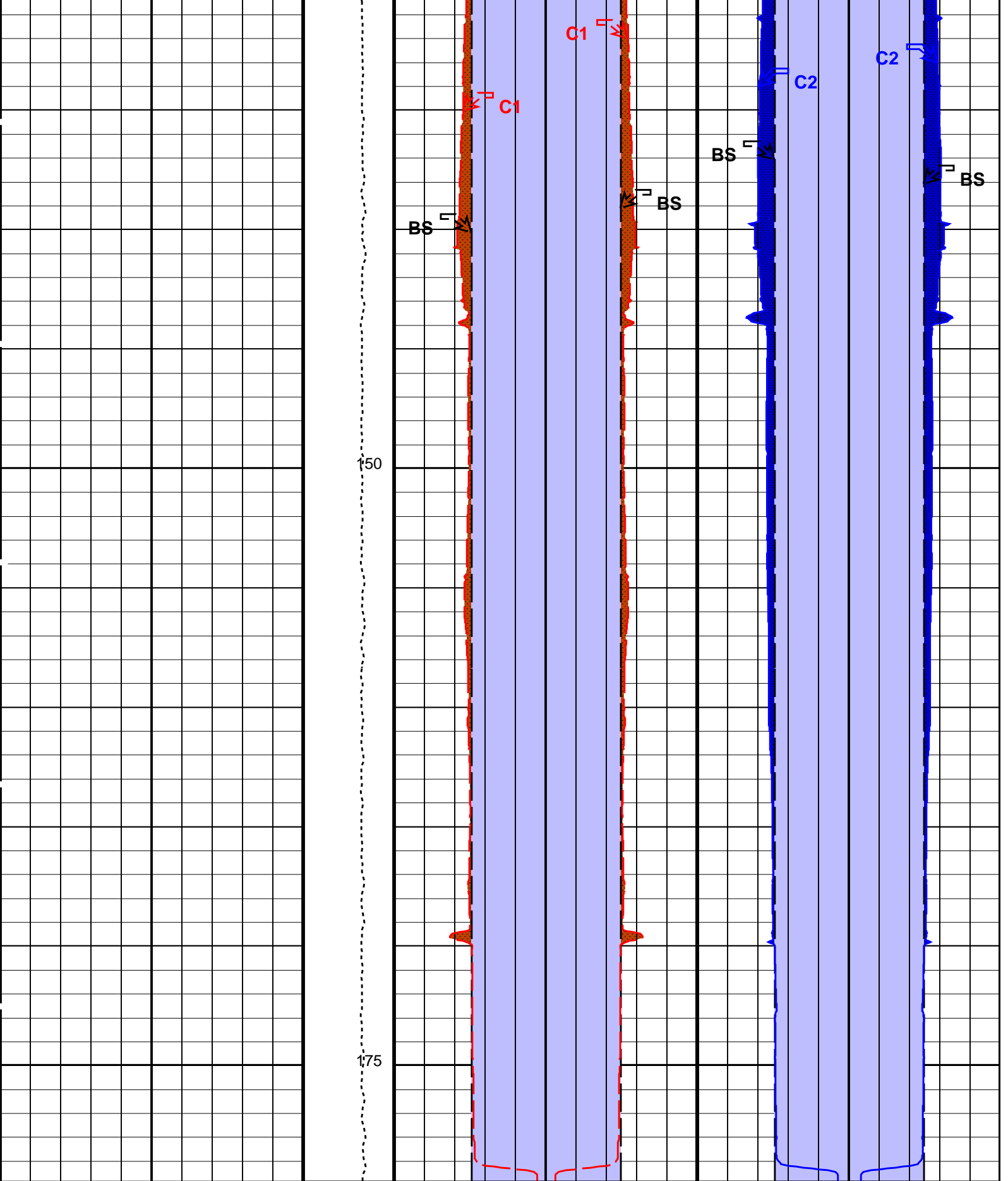
75

100

125

TENS





Tension (TENS) (LBF)	Bit Size (BS)		Bit Size (BS)		Bit Size (BS)		Bit Size (BS)					
	20	(IN)	0	0	(IN)	20	20	(IN)	0	0	(IN)	20
10000	Caliper 1 (C1)		Caliper 1 (C1)		Caliper 2 (C2)		Caliper 2 (C2)					
0	20	(IN)	0	0	(IN)	20	20	(IN)	0	0	(IN)	20

Area From C1 to BS	Area From BS_1 to C1_1	Area From C2 to BS_3	Area From BS_2 to C2_1
Area From BS to BS_1		Area From BS_3 to BS_2	

PIP SUMMARY

Time Mark Every 60 S

Parameters

DLIS Name	Description	Value
BS	System and Miscellaneous Bit Size	9.875 IN
DO	Depth Offset for Playback	-1514.0 M
PP	Playback Processing	NORMAL

Format: BHP Vertical Scale: 1:200 Graphics File Created: 11-Feb-2011 12:31

OP System Version: 17C0-154

MEST-B	SRPC-3971-Q1_2010_OP17	DTA-A	17C0-154
DSST-B	17C0-154	HNGC-B	SPC-3961-OP17_NUCL
HNGS-BA	SPC-3961-OP17_NUCL	DTC-H	17C0-154

Input DLIS Files

DEFAULT	FMS_DSI_NGS_032PUP	FN:48	PRODUCER	03-Feb-2011 08:31	1693.9 M	1478.4 M
---------	--------------------	-------	----------	-------------------	----------	----------

Output DLIS Files

DEFAULT	FMS_DSI_NGS_054PUP	FN:12	PRODUCER	11-Feb-2011 12:31		
---------	--------------------	-------	----------	-------------------	--	--

Input DLIS Files

DEFAULT	FMS_DSI_NGS_031PUP	FN:47	PRODUCER	03-Feb-2011 08:24	1693.9 M	1583.7 M
---------	--------------------	-------	----------	-------------------	----------	----------

Output DLIS Files

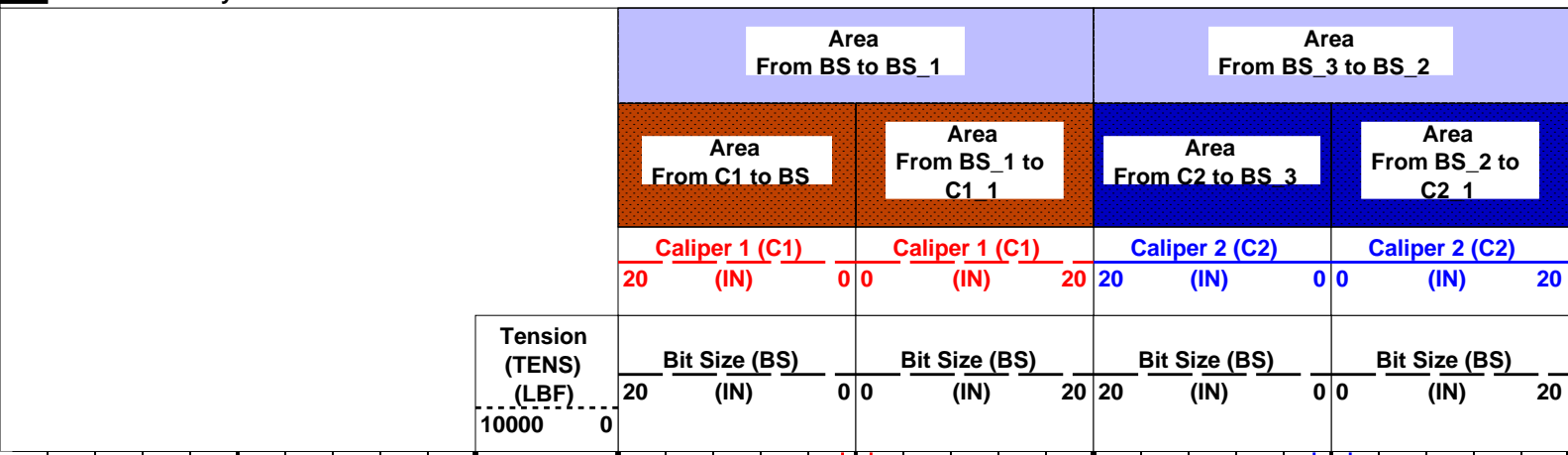
DEFAULT	FMS_DSI_NGS_053PUP	FN:11	PRODUCER	11-Feb-2011 12:21	179.8 M	69.8 M
---------	--------------------	-------	----------	-------------------	---------	--------

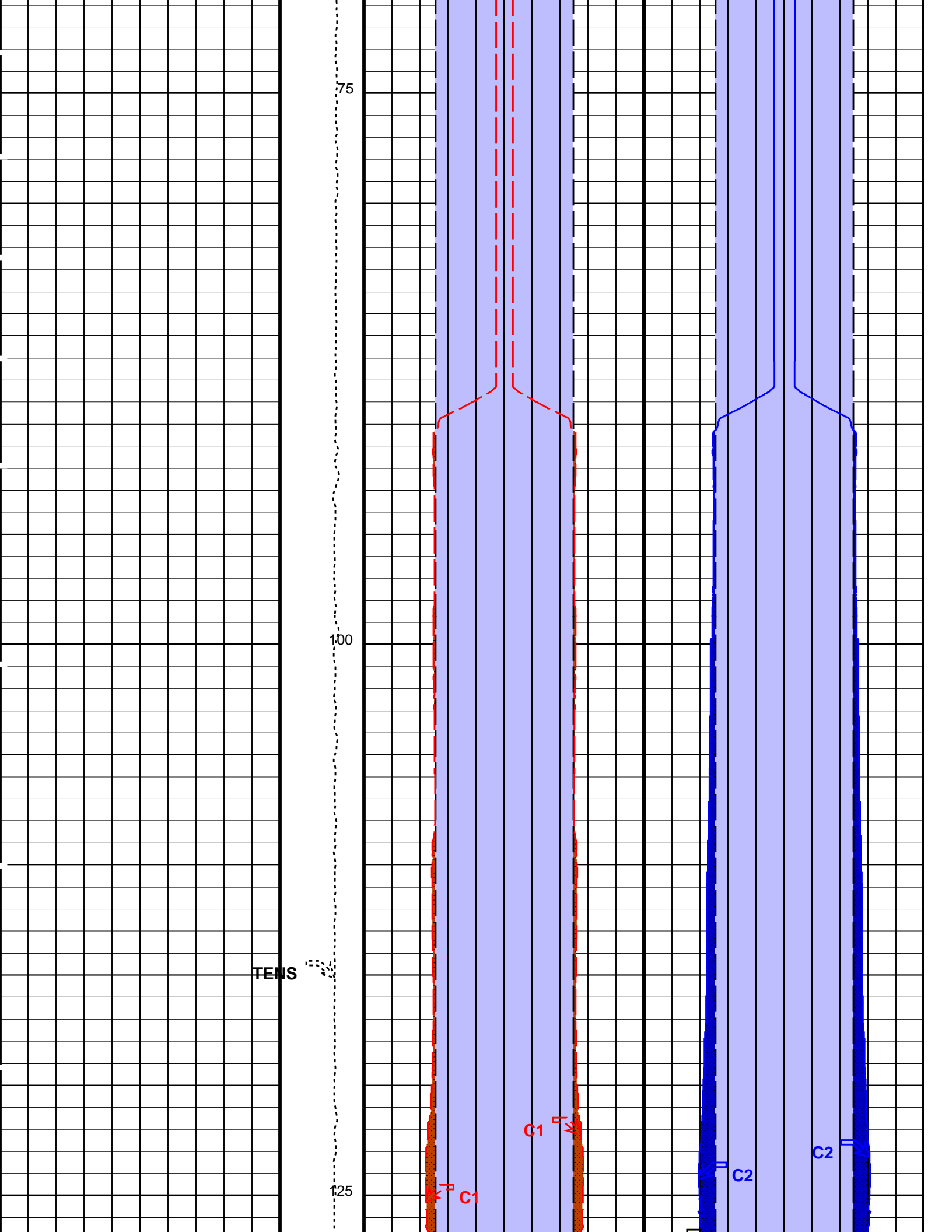
OP System Version: 17C0-154

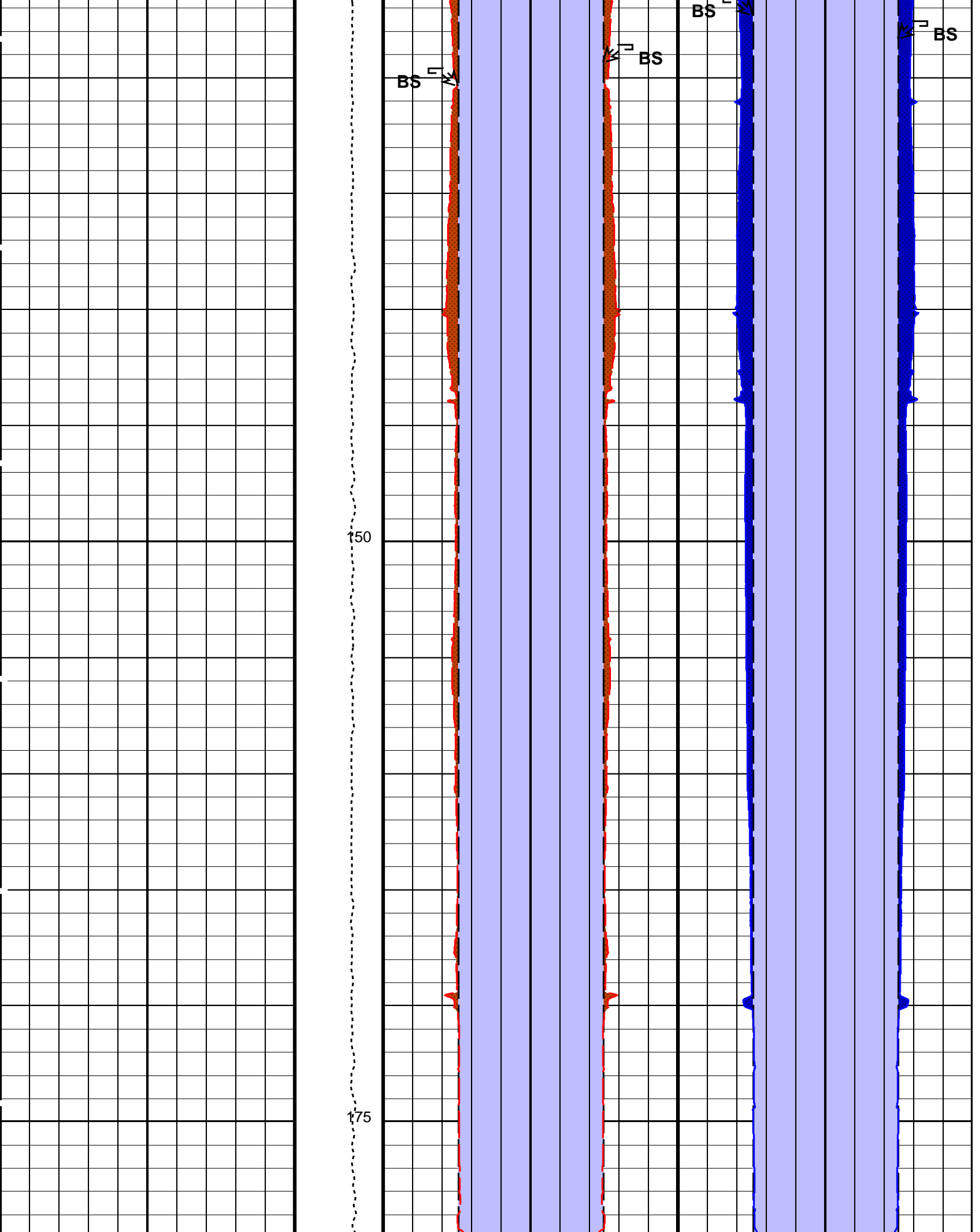
MEST-B	SRPC-3971-Q1_2010_OP17	DTA-A	17C0-154
DSST-B	17C0-154	HNGC-B	SPC-3961-OP17_NUCL
HNGS-BA	SPC-3961-OP17_NUCL	DTC-H	17C0-154

PIP SUMMARY

Time Mark Every 60 S







Tension  
(TENS)  
(LBF)

Bit Size (BS)  
20 (IN)

0 0

Bit Size (BS)  
20 (IN)

Bit Size (BS)  
20 (IN)

0 0

Bit Size (BS)  
20 (IN)

10000 0

	<u>Caliper 1 (C1)</u>	<u>Caliper 1 (C1)</u>	<u>Caliper 2 (C2)</u>	<u>Caliper 2 (C2)</u>
	20 (IN) 0 0	0 0 (IN) 20	20 (IN) 0 0	0 0 (IN) 20
	Area From C1 to BS	Area From BS_1 to C1_1	Area From C2 to BS_3	Area From BS_2 to C2_1
	Area From BS to BS_1		Area From BS_3 to BS_2	

PIP SUMMARY

Time Mark Every 60 S

Parameters

DLIS Name	Description	Value
System and Miscellaneous		
BS	Bit Size	9.875 IN
DO	Depth Offset for Playback	-1514.0 M
PP	Playback Processing	NORMAL

Format: BHP Vertical Scale: 1:200 Graphics File Created: 11-Feb-2011 12:21

OP System Version: 17C0-154

MEST-B	SRPC-3971-Q1_2010_OP17	DTA-A	17C0-154
DSST-B	17C0-154	HNGC-B	SPC-3961-OP17_NUCL
HNGS-BA	SPC-3961-OP17_NUCL	DTC-H	17C0-154

Input DLIS Files

DEFAULT	FMS_DSI_NGS_031PUP	FN:47	PRODUCER	03-Feb-2011 08:24	1693.9 M	1583.7 M
---------	--------------------	-------	----------	-------------------	----------	----------

Output DLIS Files

DEFAULT	FMS_DSI_NGS_053PUP	FN:11	PRODUCER	11-Feb-2011 12:21
---------	--------------------	-------	----------	-------------------

Company: Lamont Doherty



Well: Expedition 330 Site U1376A

Field: Louisville Seamounts

Rig: JOIDES Resolution

Ocean: Pacific

Borehole Profile  
Natural Gamma Ray