

Processed FMS Images

Depth Reference: WMSF

* A Mark of Schlumberger

Using the following logs: FMS/DSI/GPIT/HNGS

COMPANY: Lamont-Doherty Earth Observatory
WELL: Expedition 330 Hole U1376A
FIELD: Louisville Seamounts
Rig: JOIDES Resolution
Ocean: Pacific
COUNTRY: USA
Date Logged: 3-Feb-2011 **Date Processed:**
Well Location: Latitude: S 32.2165*
 Longitude: W 171.88067 Deg
Elevations: KB: 11m DF: 11m GL: -1513.5m
API Number: Job Number:

FOLD HERE The well name, location and borehole reference data were furnished by the customer.

All interpretations are opinions based on inferences from electrical or other measurements and we cannot, and do not guarantee the accuracy or correctness of any interpretation, and we shall not, except in the case of gross or willful negligence on our part, be liable or responsible for any loss, costs, damages or expenses incurred or sustained by anyone resulting from any interpretations made by any of our officers, agents or employees. These interpretations are also subject to Clause 4 of our General Terms and Conditions as set out in our current Price Schedule.

Field Recording:	Location: Houston	Software Version: 17C0-154	Engineer: K. Swain
------------------	-------------------	----------------------------	--------------------

Office Recording:	ICS Center:	Baseline:	Log Analyst:
-------------------	-------------	-----------	--------------

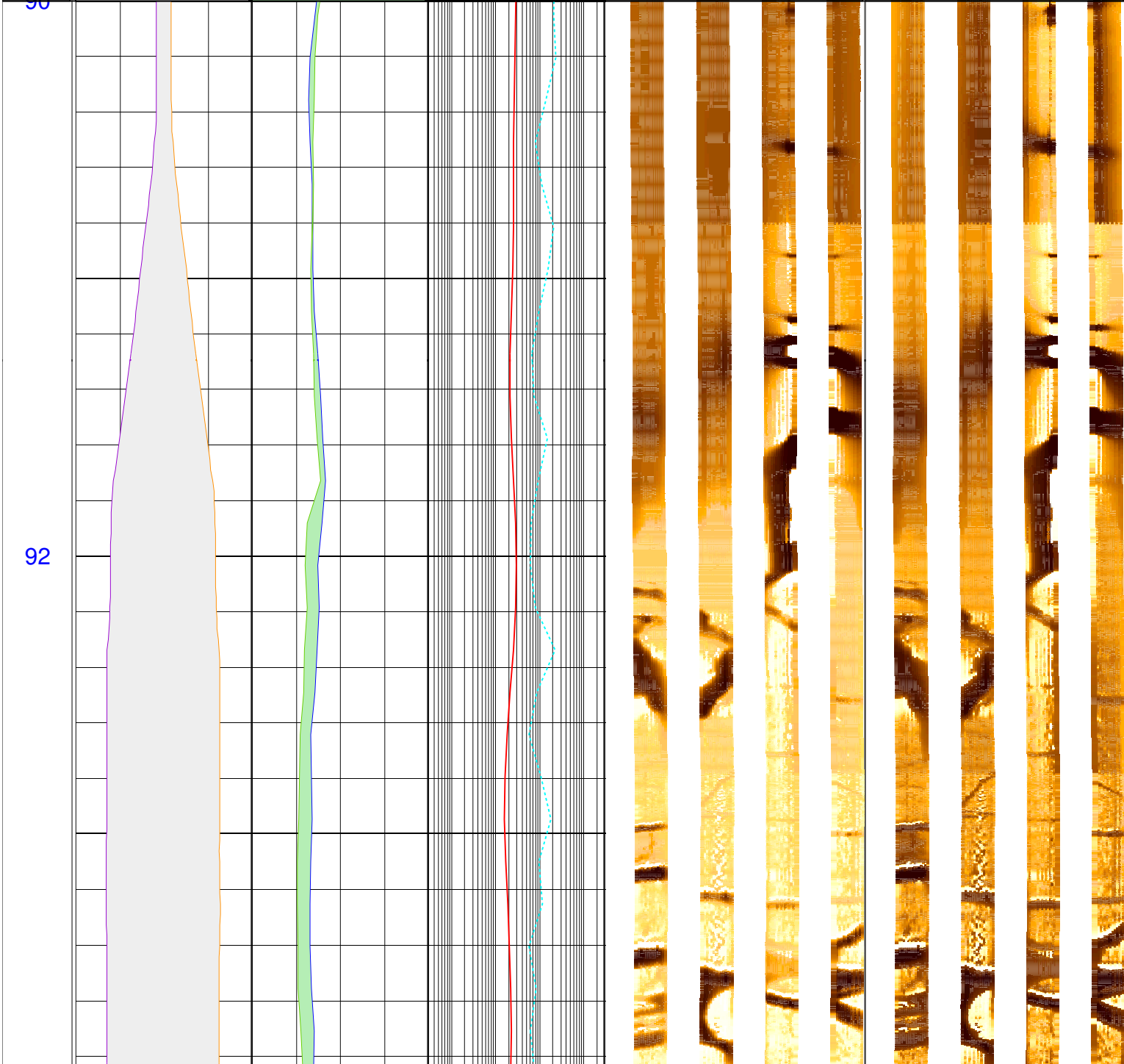
Mud and Borehole Measurements:

Rm @ Measured Temperature:	@	BHT: 6.11111degC	Bitsize: 9.875in
Rmf @ Measured Temperature:	@	Type Fluid in Hole:	Seawater
Rmc @ Measured Temperature:	@	Mud Density: 1.258g/cm3	

Remarks:

Data depth-shifted and depth-matched. Depth reference: m WMSF. Drill pipe at 79.5 m WMSF. Water depth at 1513.5 m WRF. Average peak-to-peak heave: 0.5-1 m. Wireline heave compensator used during the logging operation.

	C2_FMS_repea -16 (in) 16	HSGR_FMS_rep 0 (gAPI) 50		FMS_repeat_static Horizontal Scale: 1 : 8.491 Orientation North	FMS_repeat-dynamic Horizontal Scale: 1 : 8.491 Orientation North
	C1_FMS_repea 16 (in) -16	HCGR_FMS_rep 0 (gAPI) 50	IMPH_DIT_mai 0.3 (ohm.m) 3000	0 120 240 360	0 120 240 360
MD 1 : 20 m	lgp_Area_17_	lgp_Area_178	IDPH_DIT_mai 0.3 (ohm.m) 3000	ResistiveFMS4 Image@conductive	ResistiveFMS4 Image@conductive

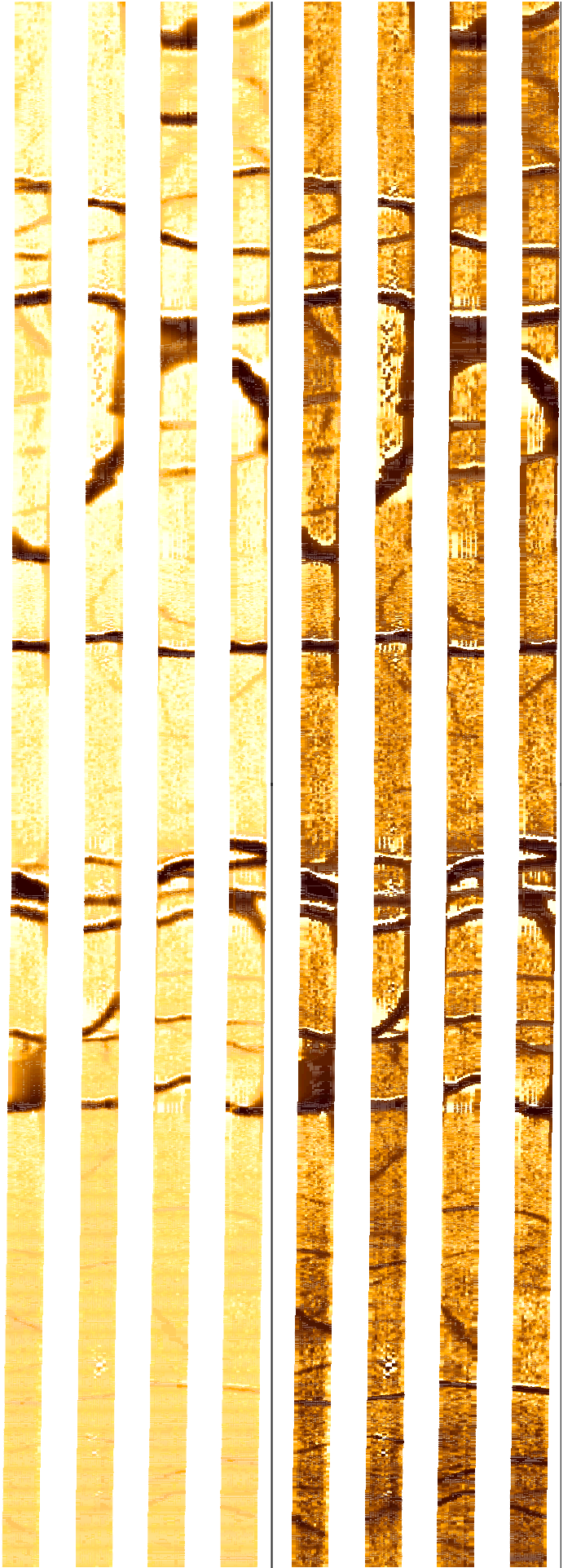
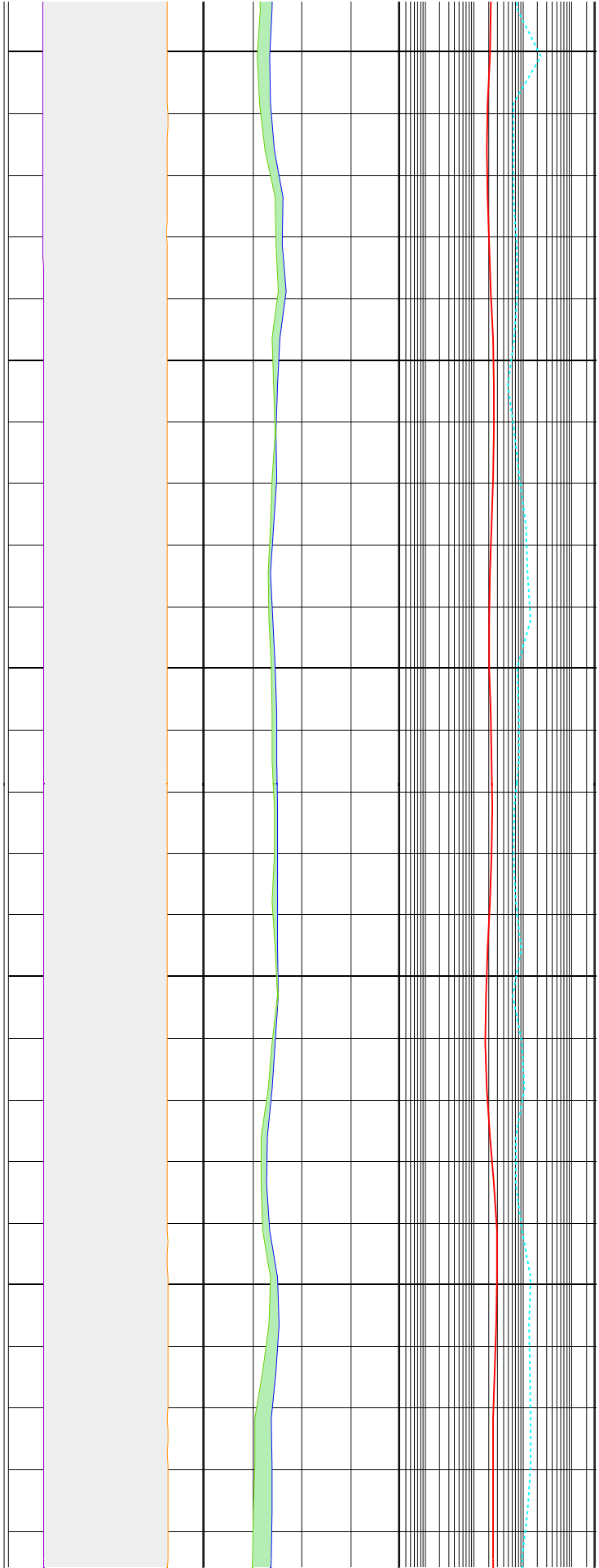


92

94

96

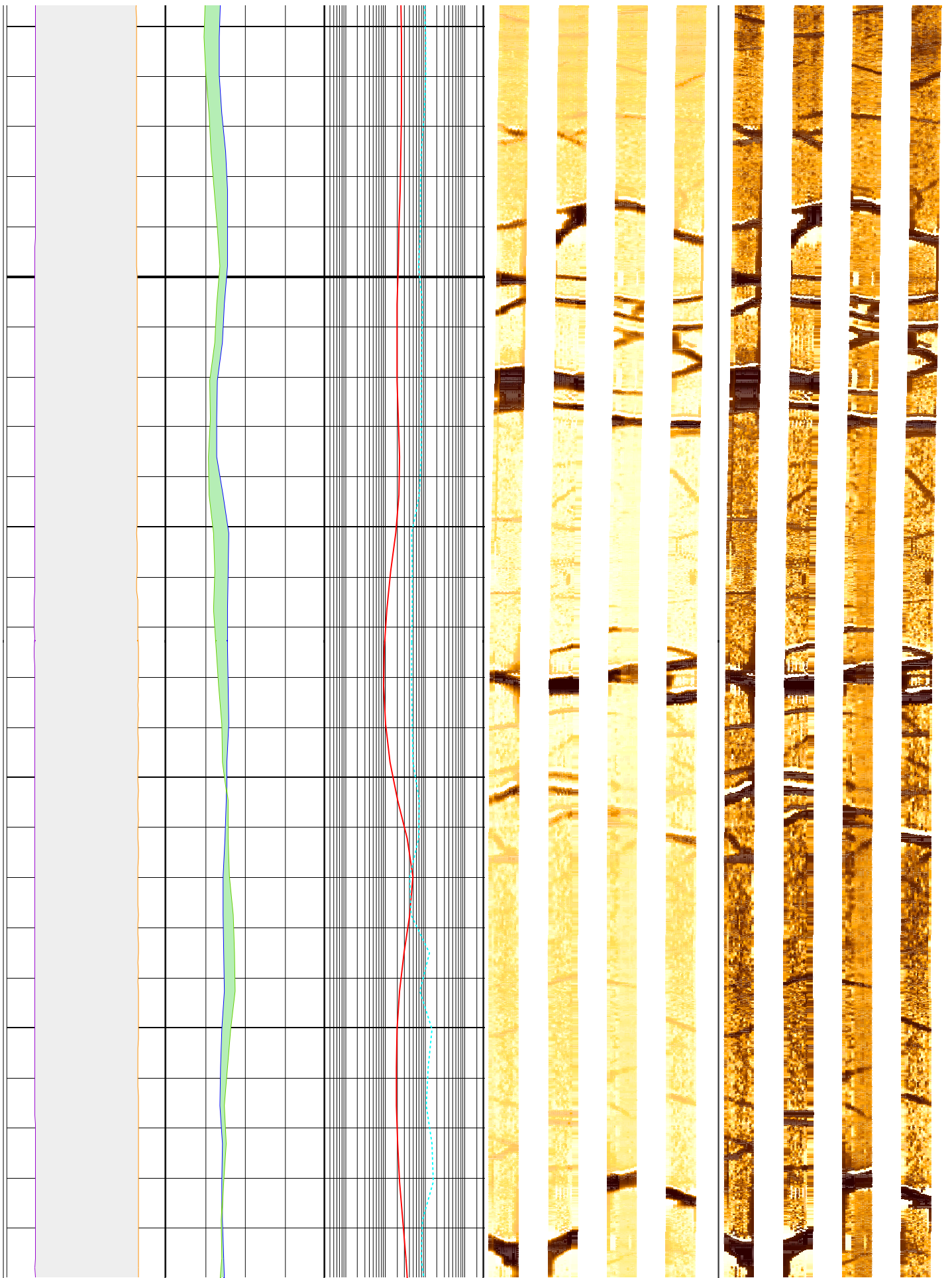
98



100

102

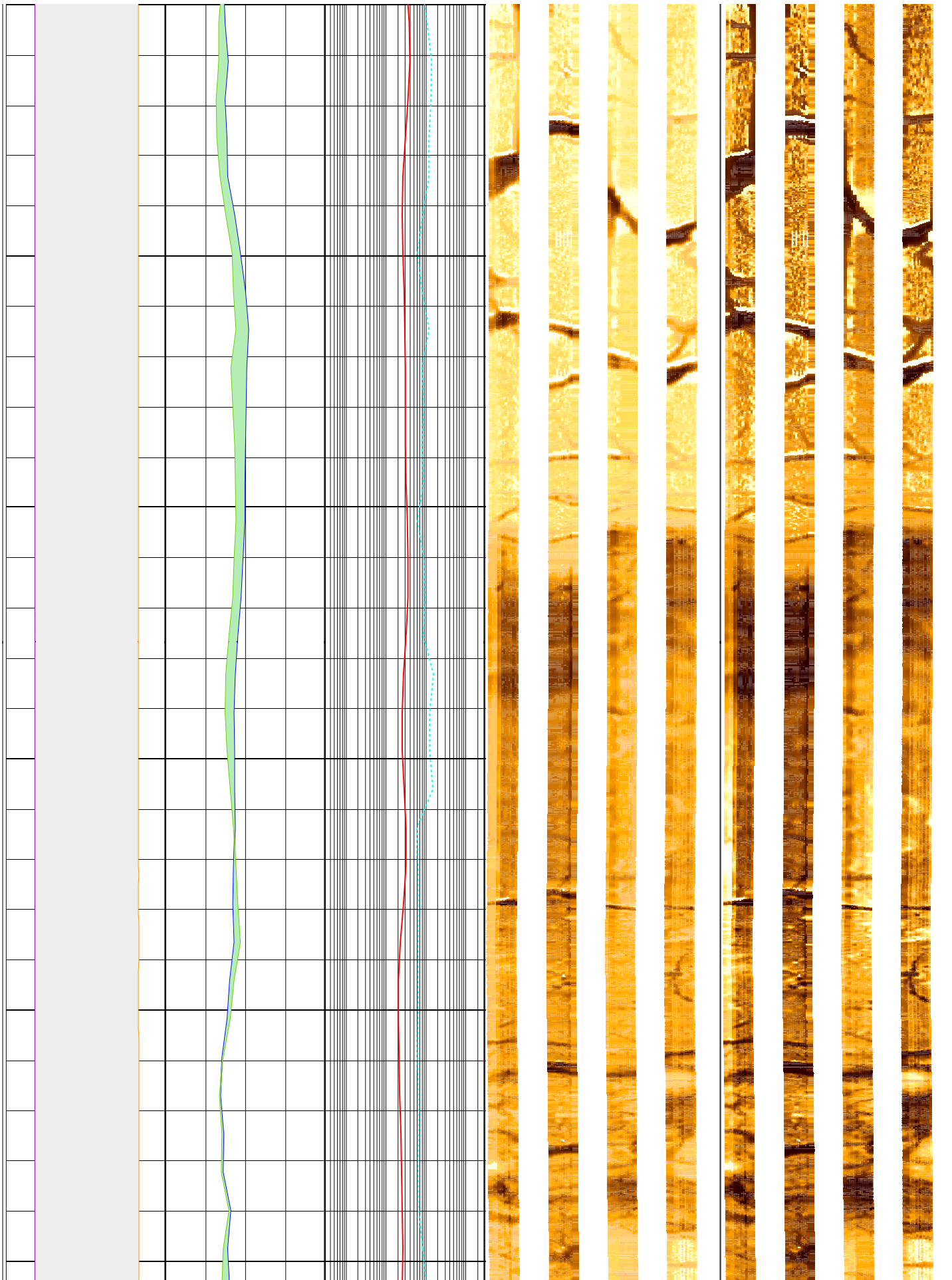
104



104

106

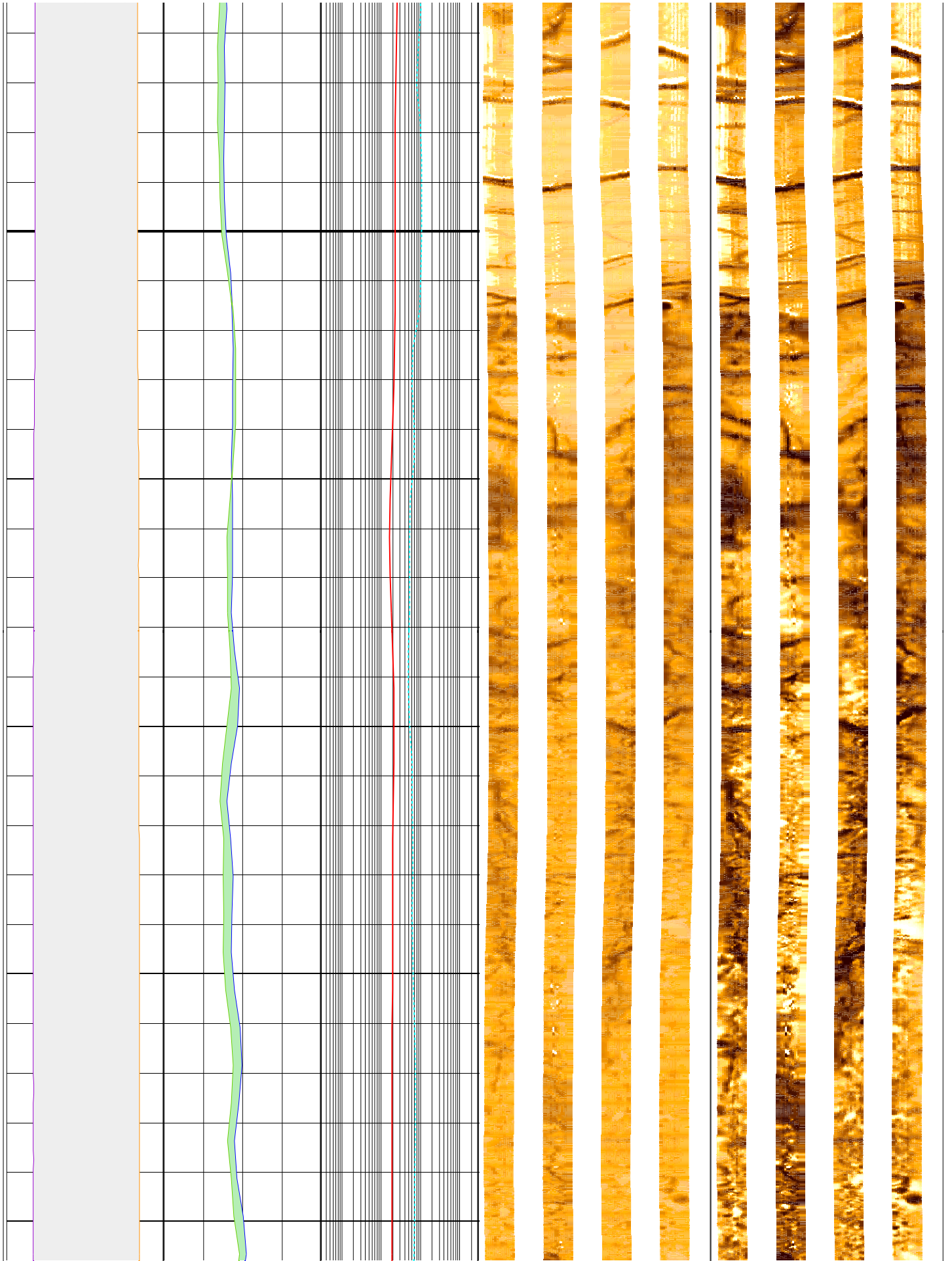
108



110

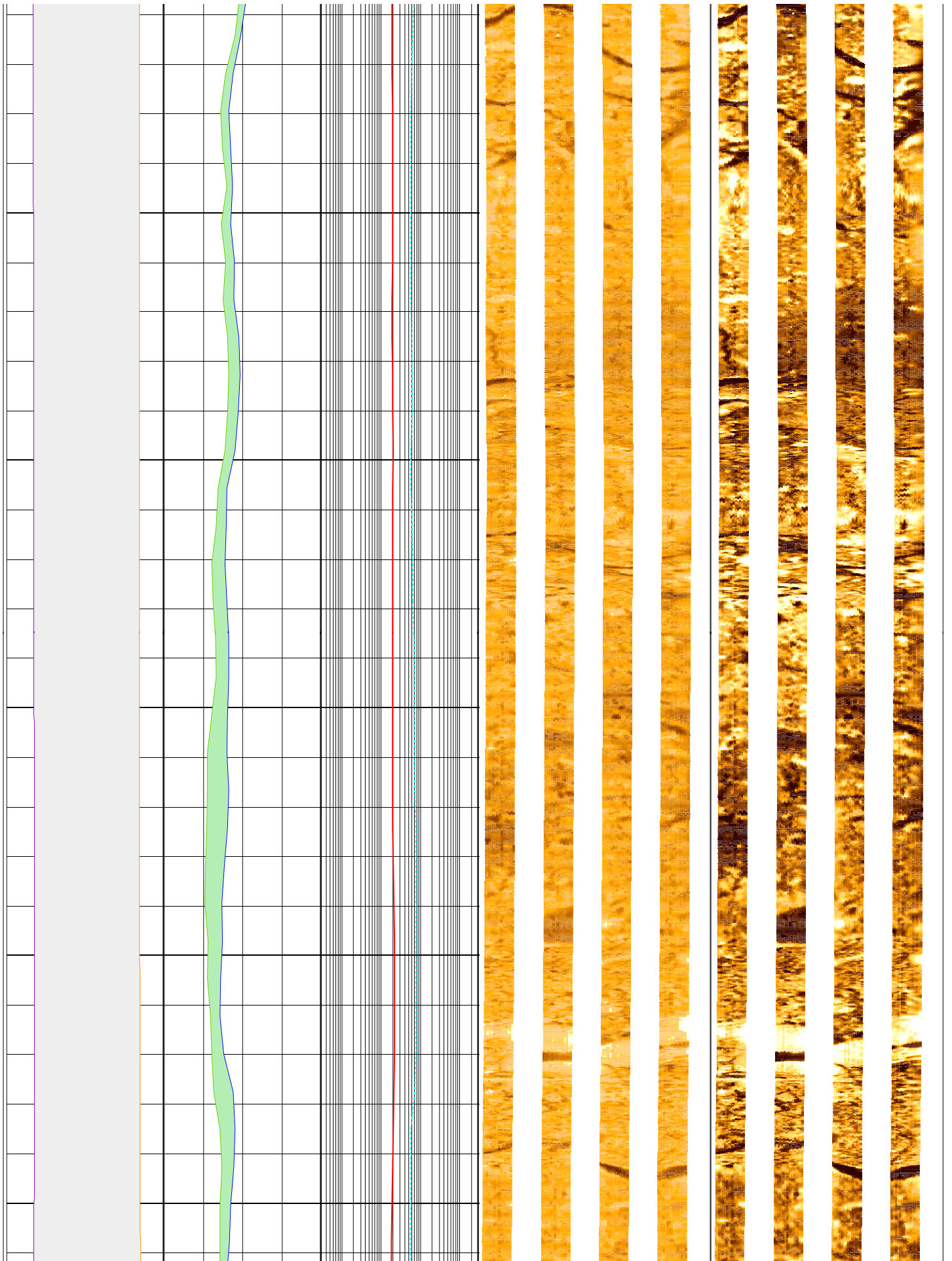
112

114



116

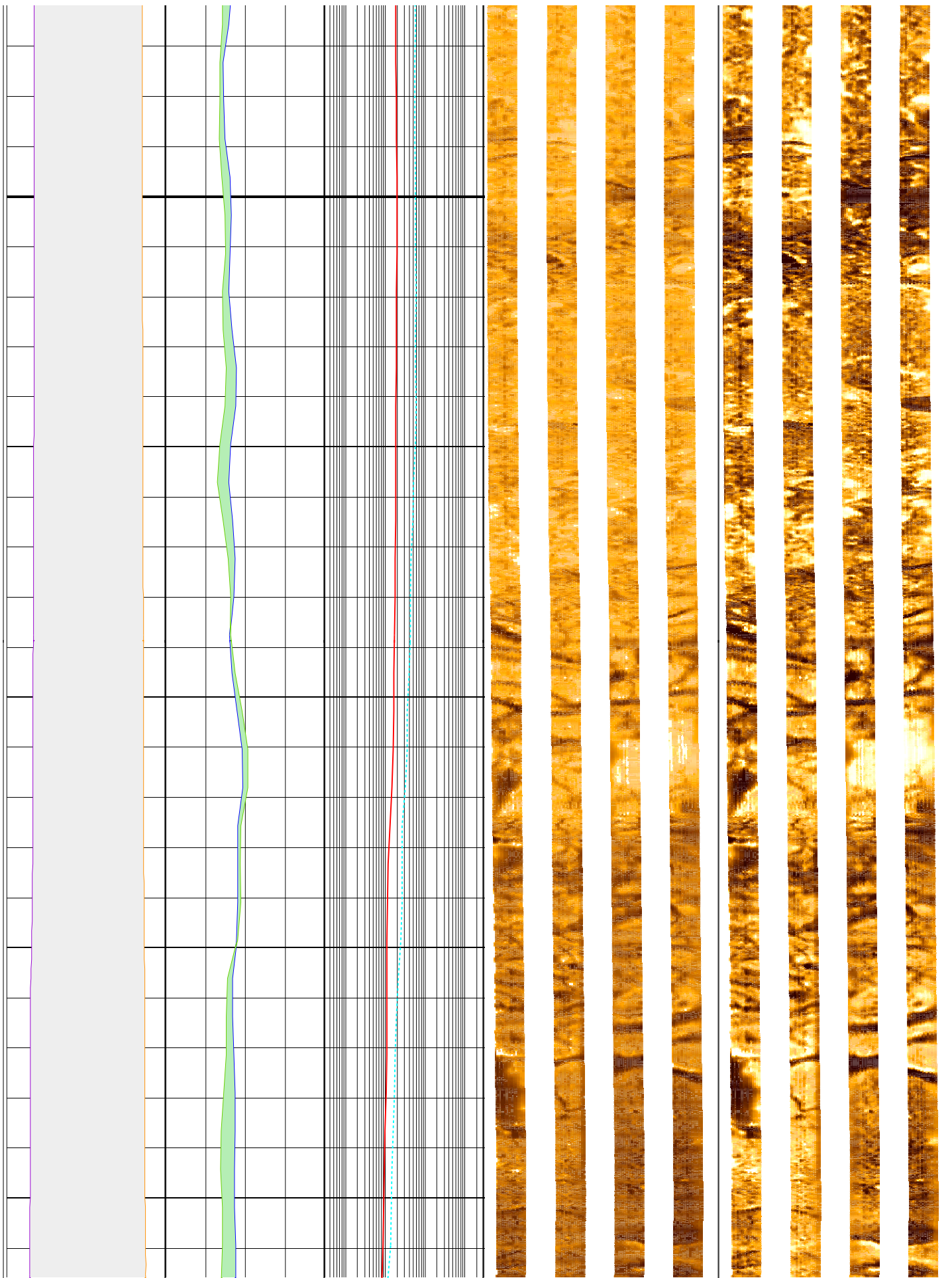
118



120

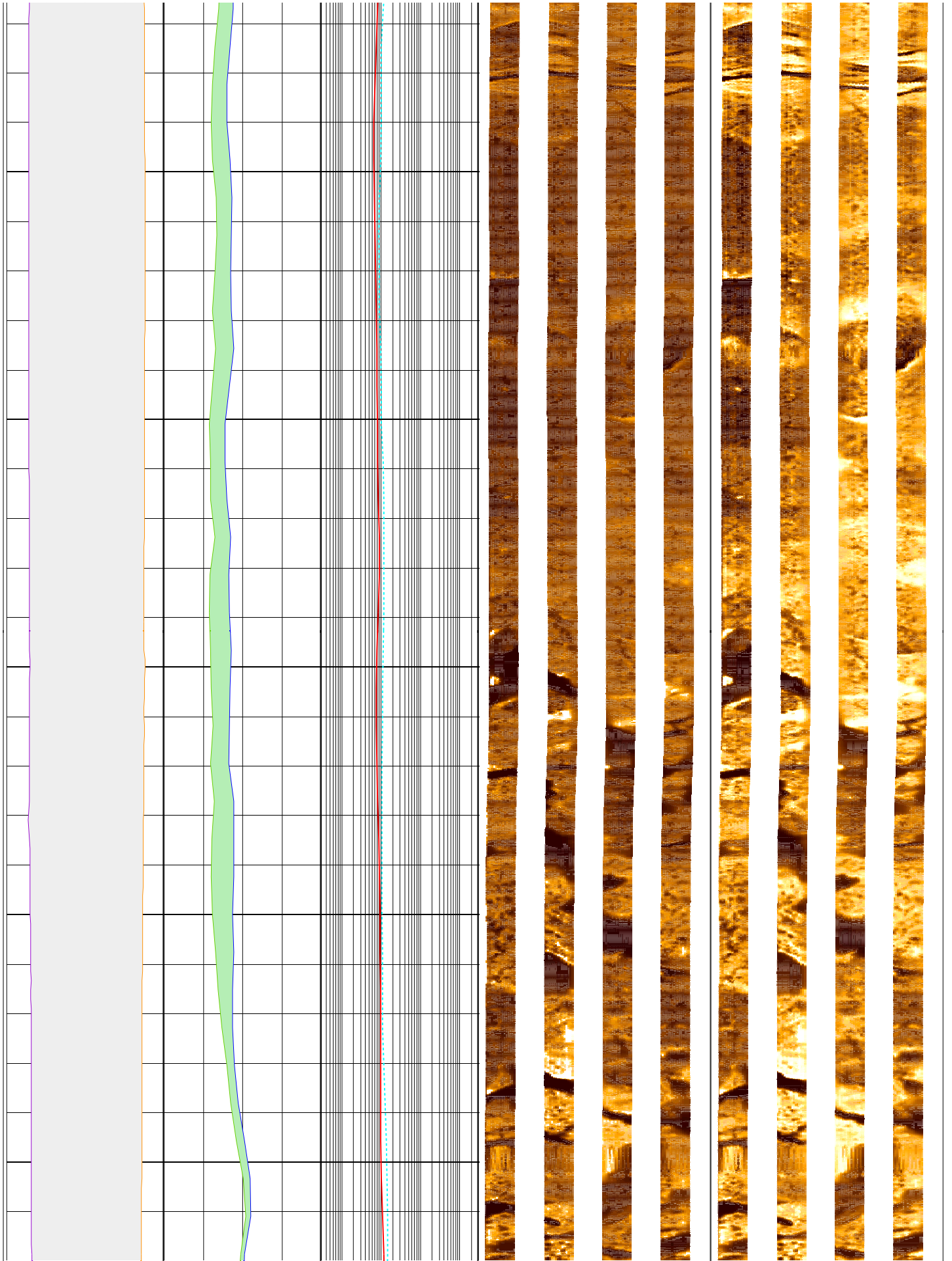
122

124



126

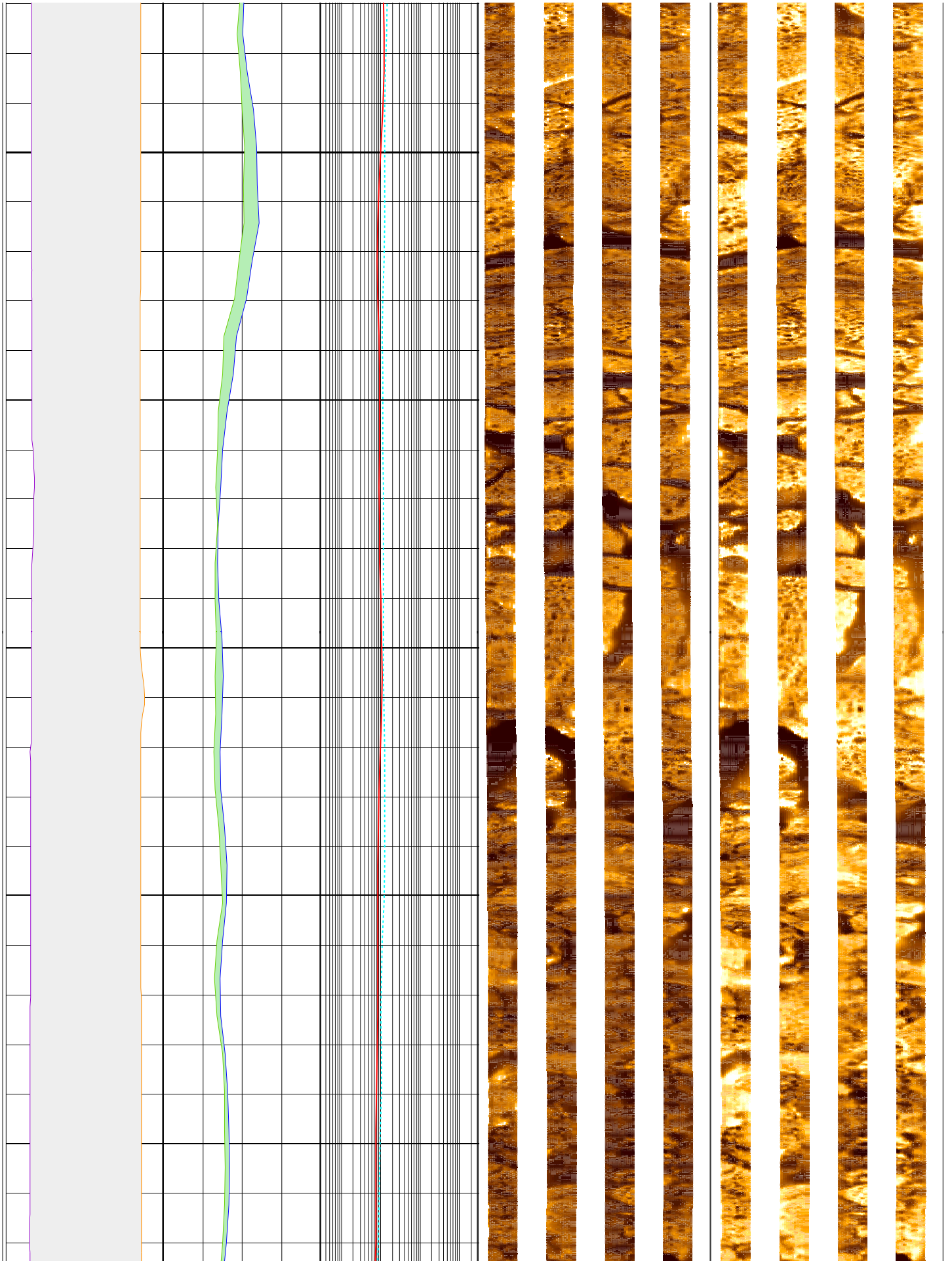
128



130

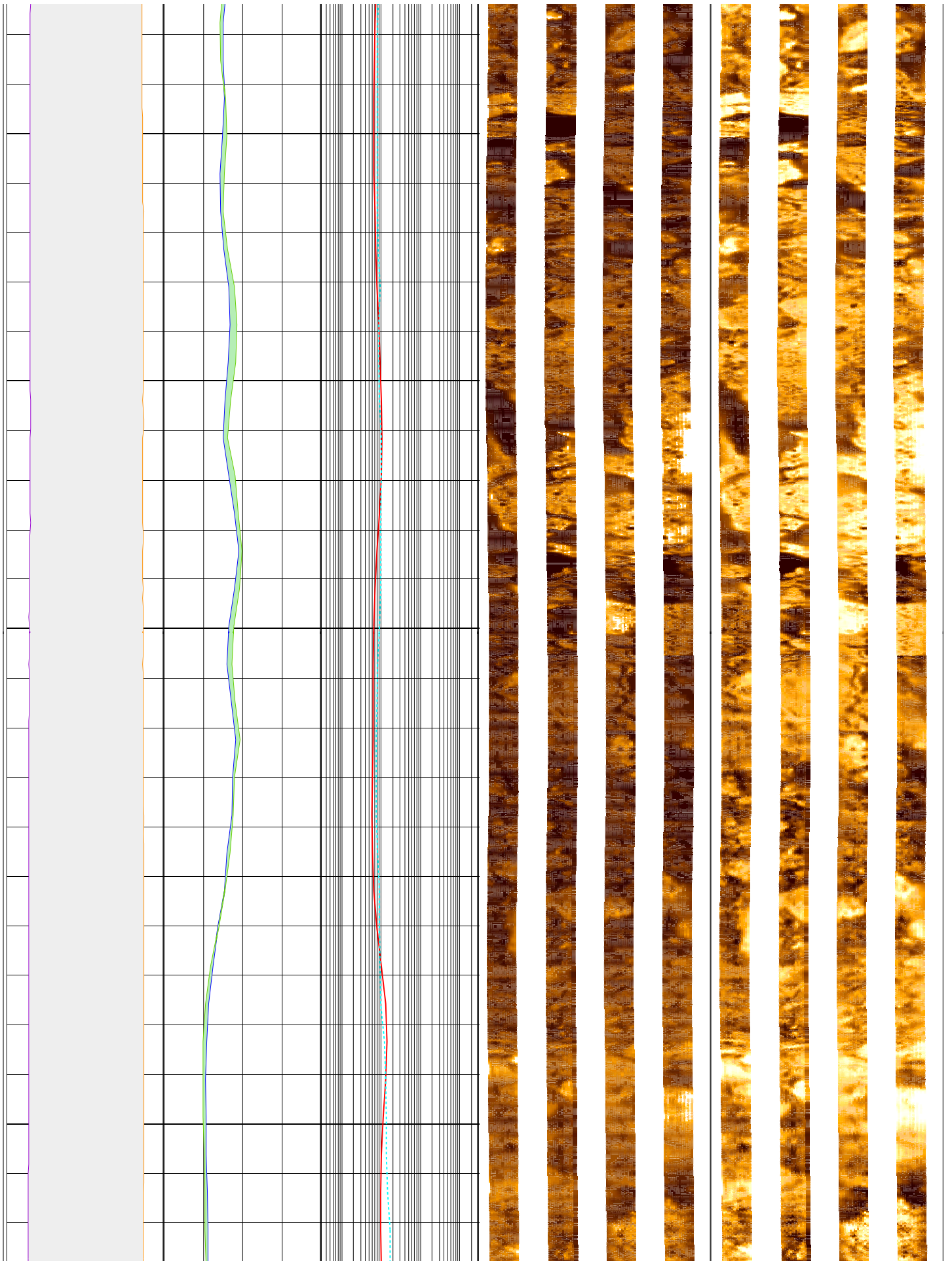
132

134



136

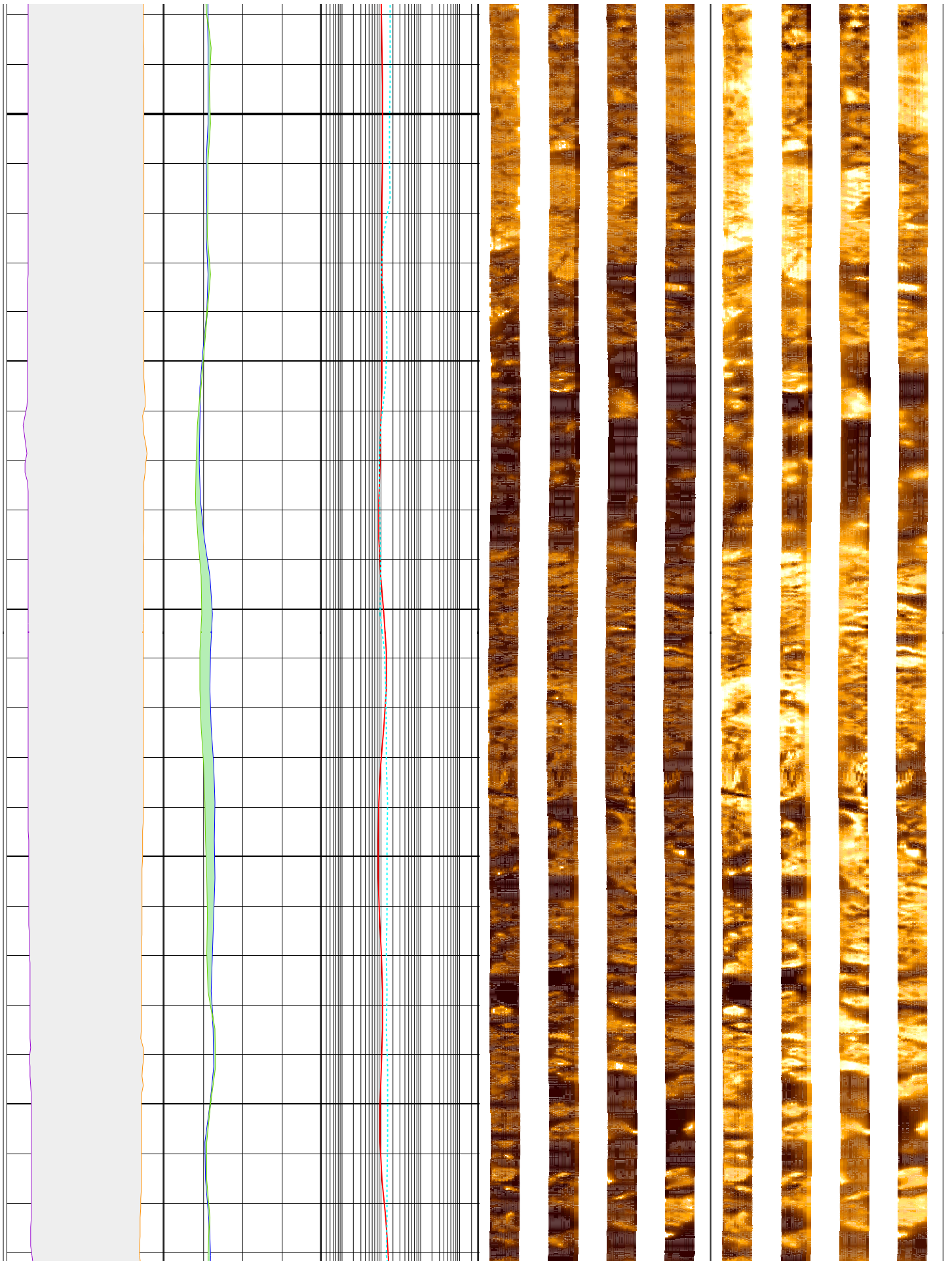
138



140

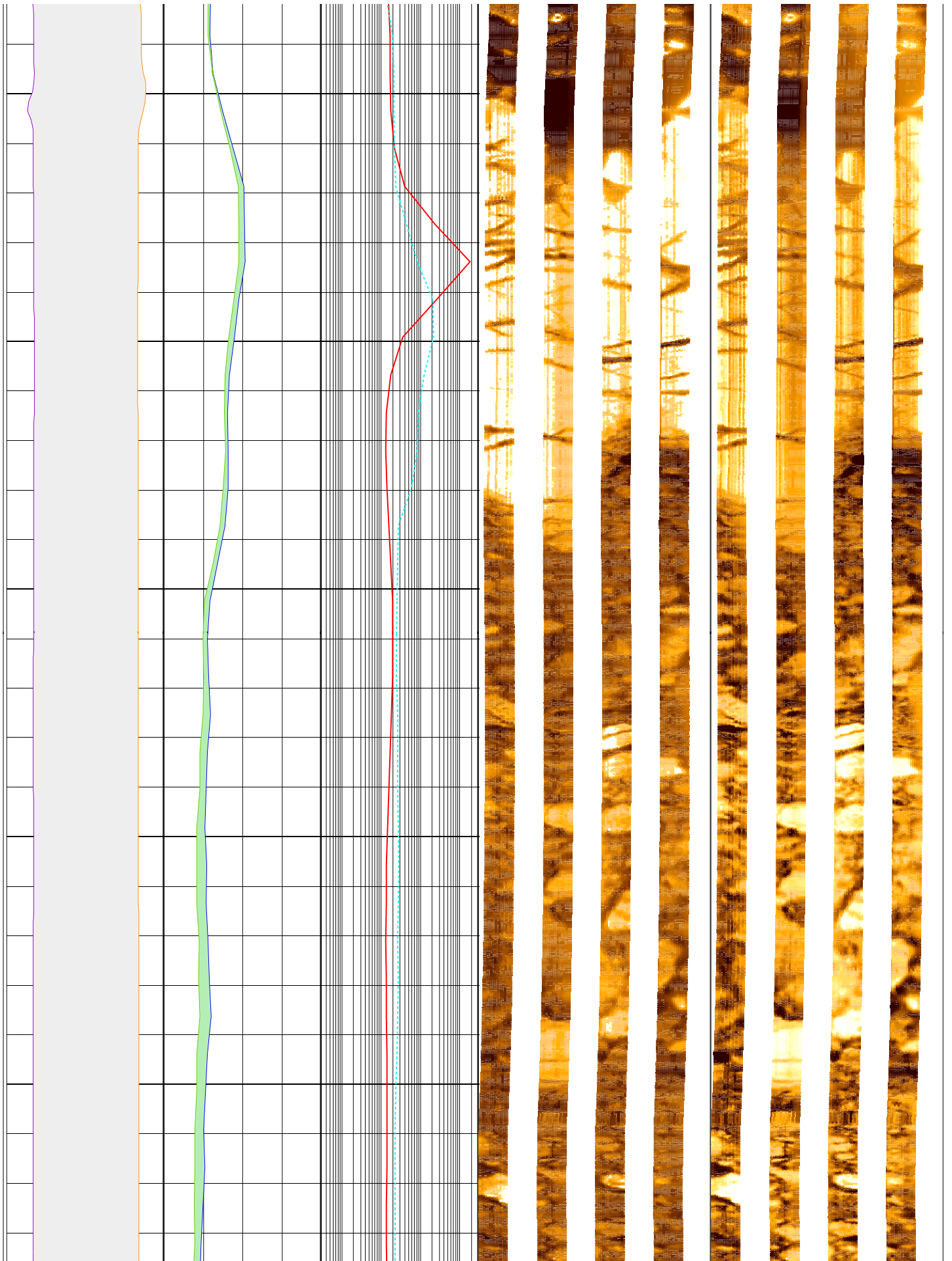
142

144



146

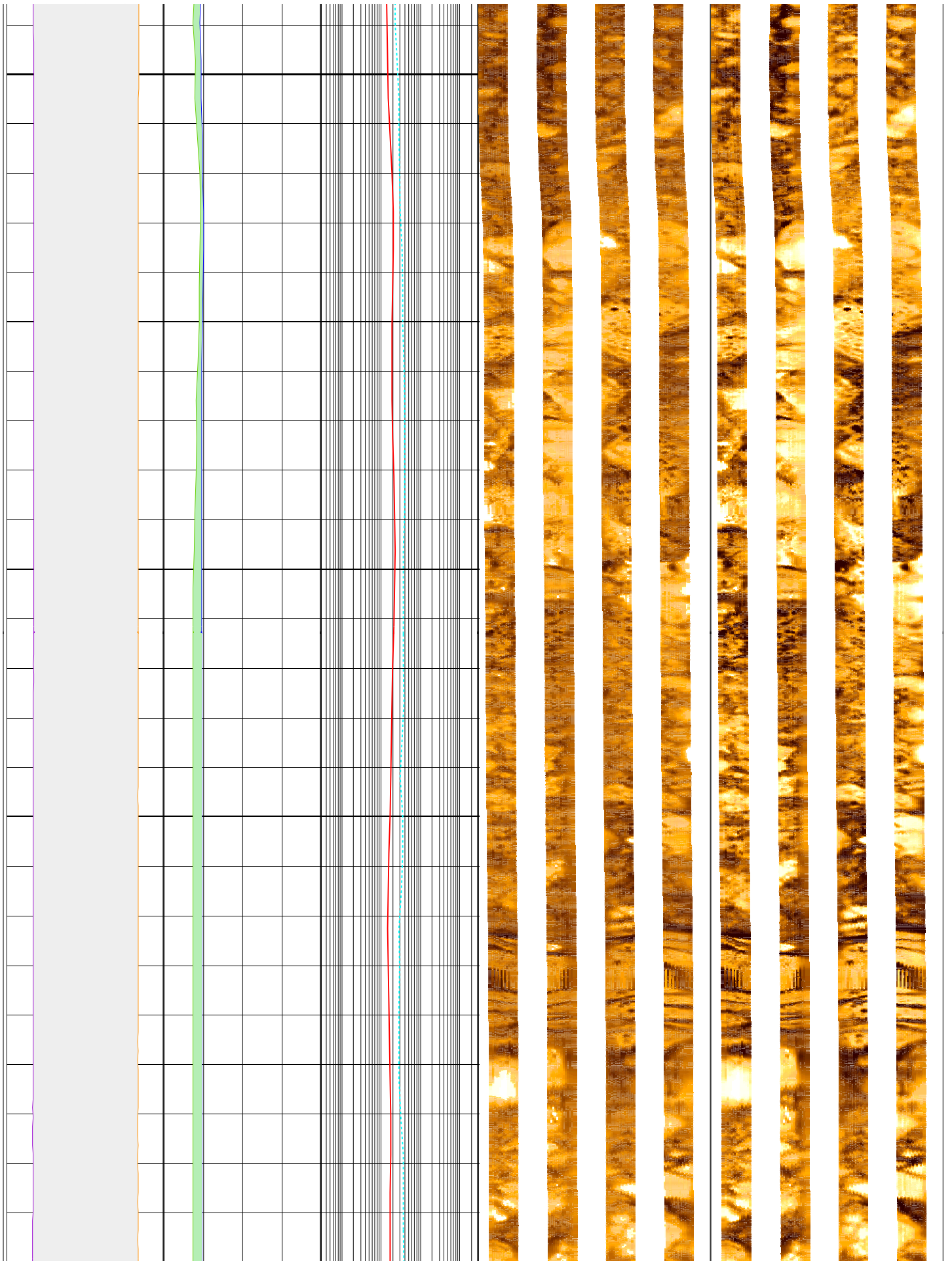
148



150

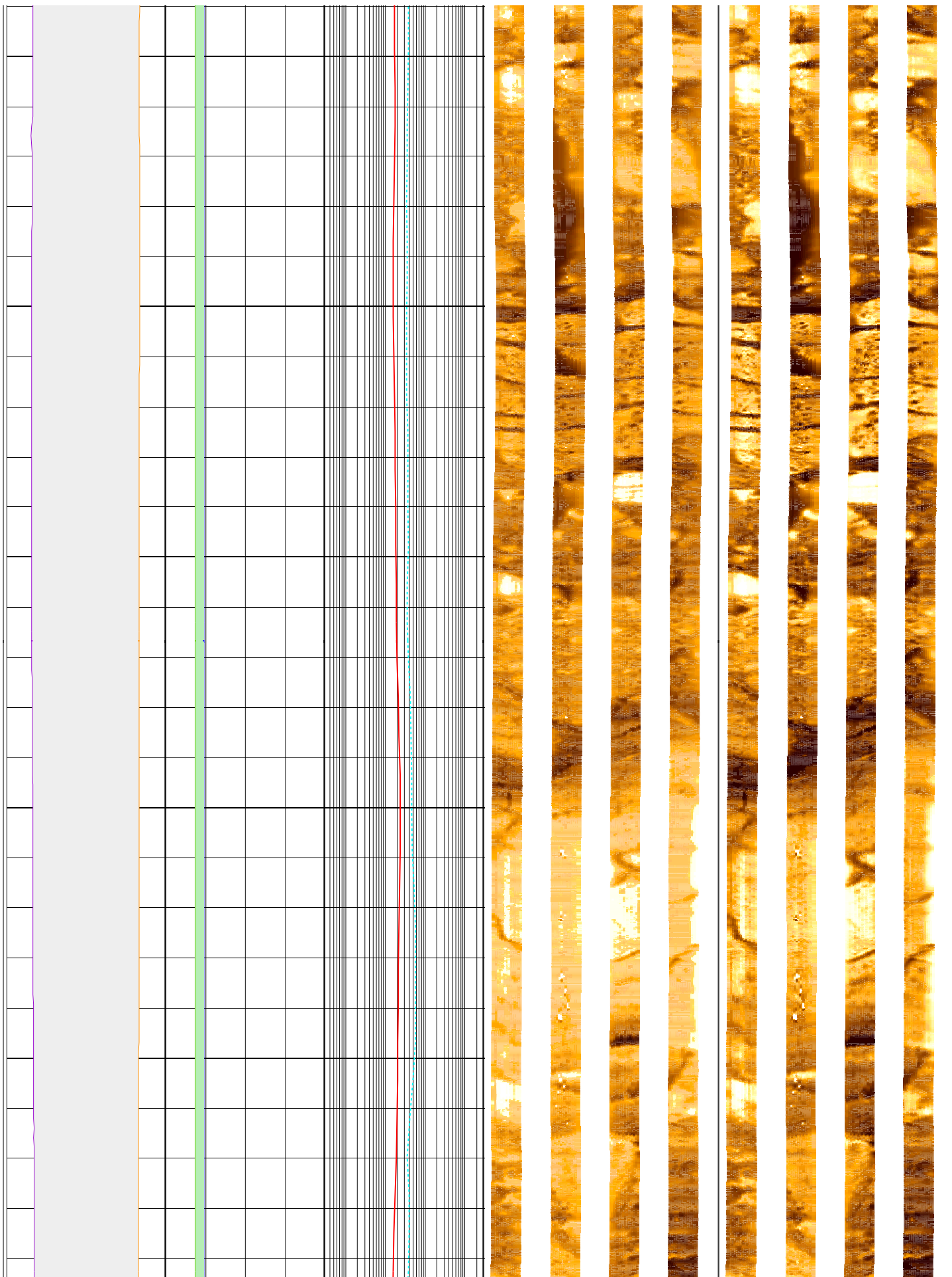
152

154



156

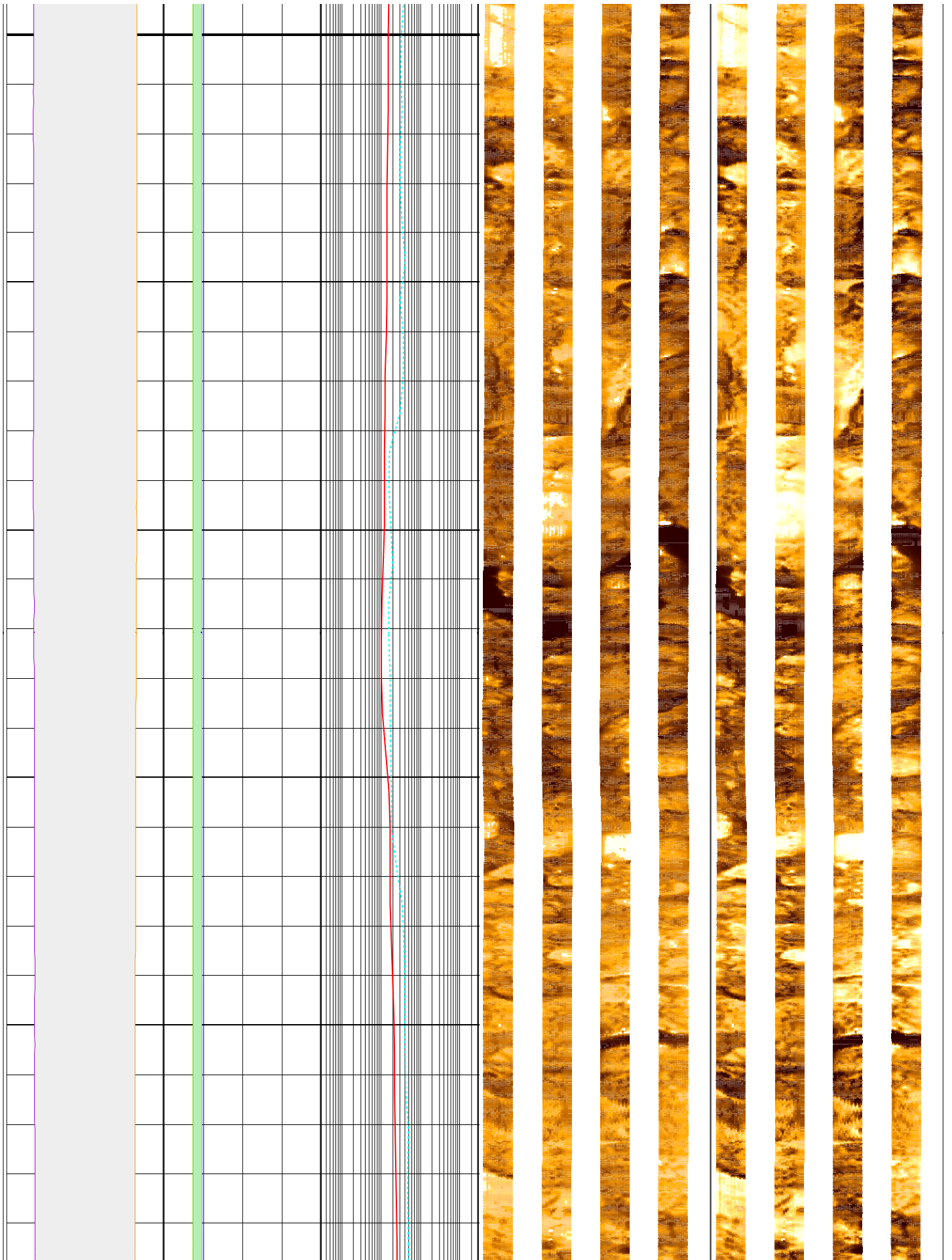
158



160

162

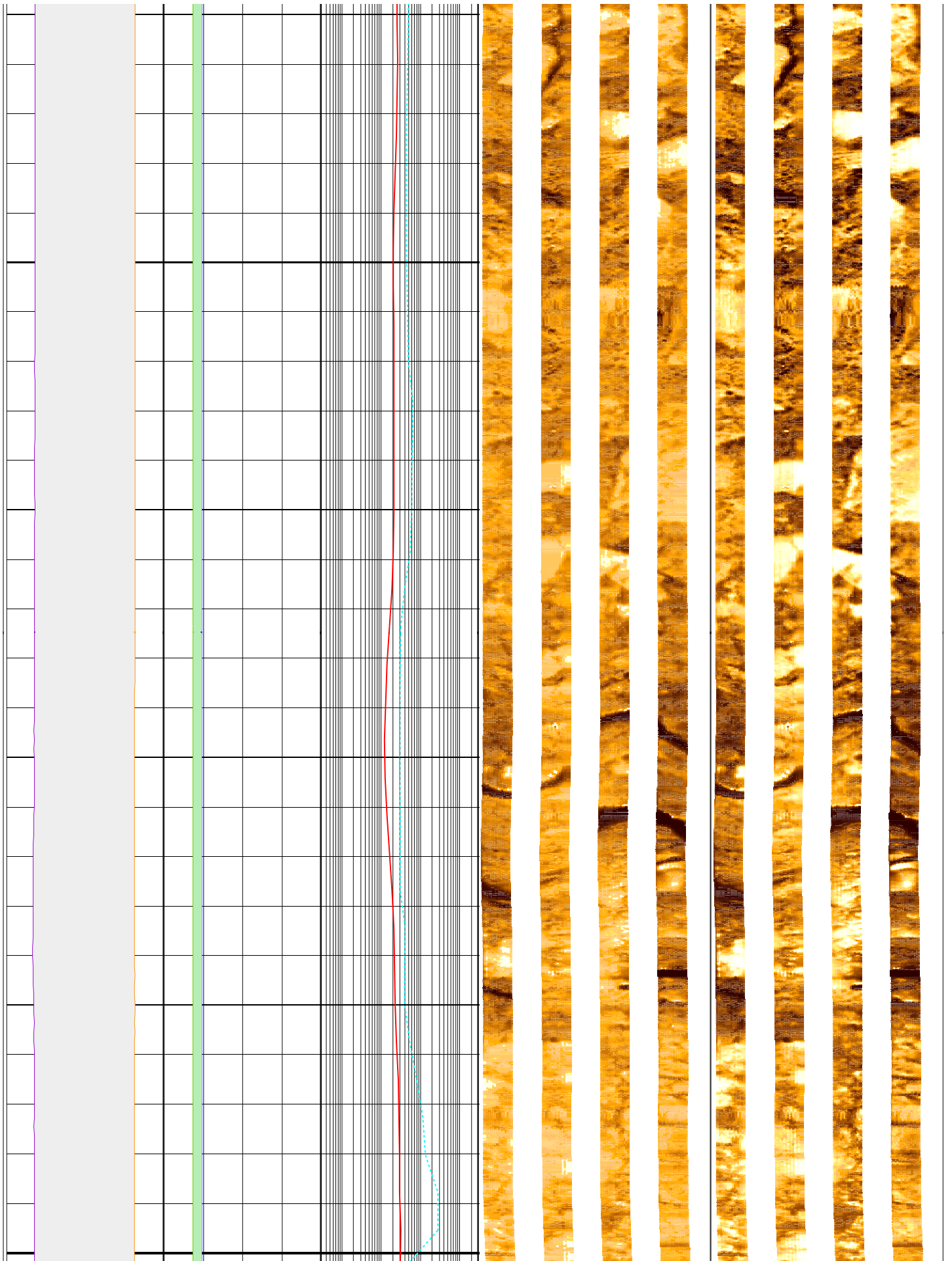
164



166

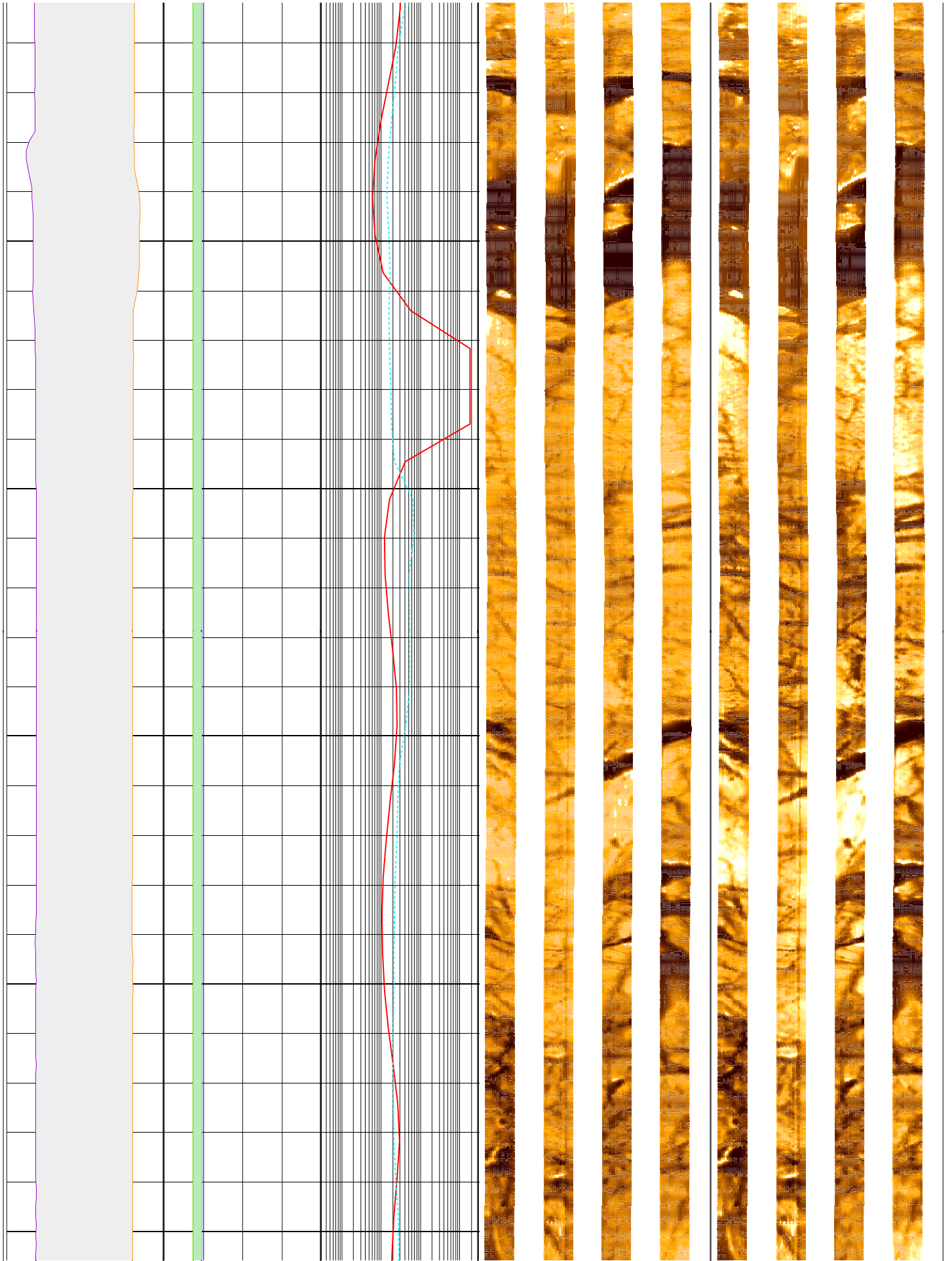
168

170



172

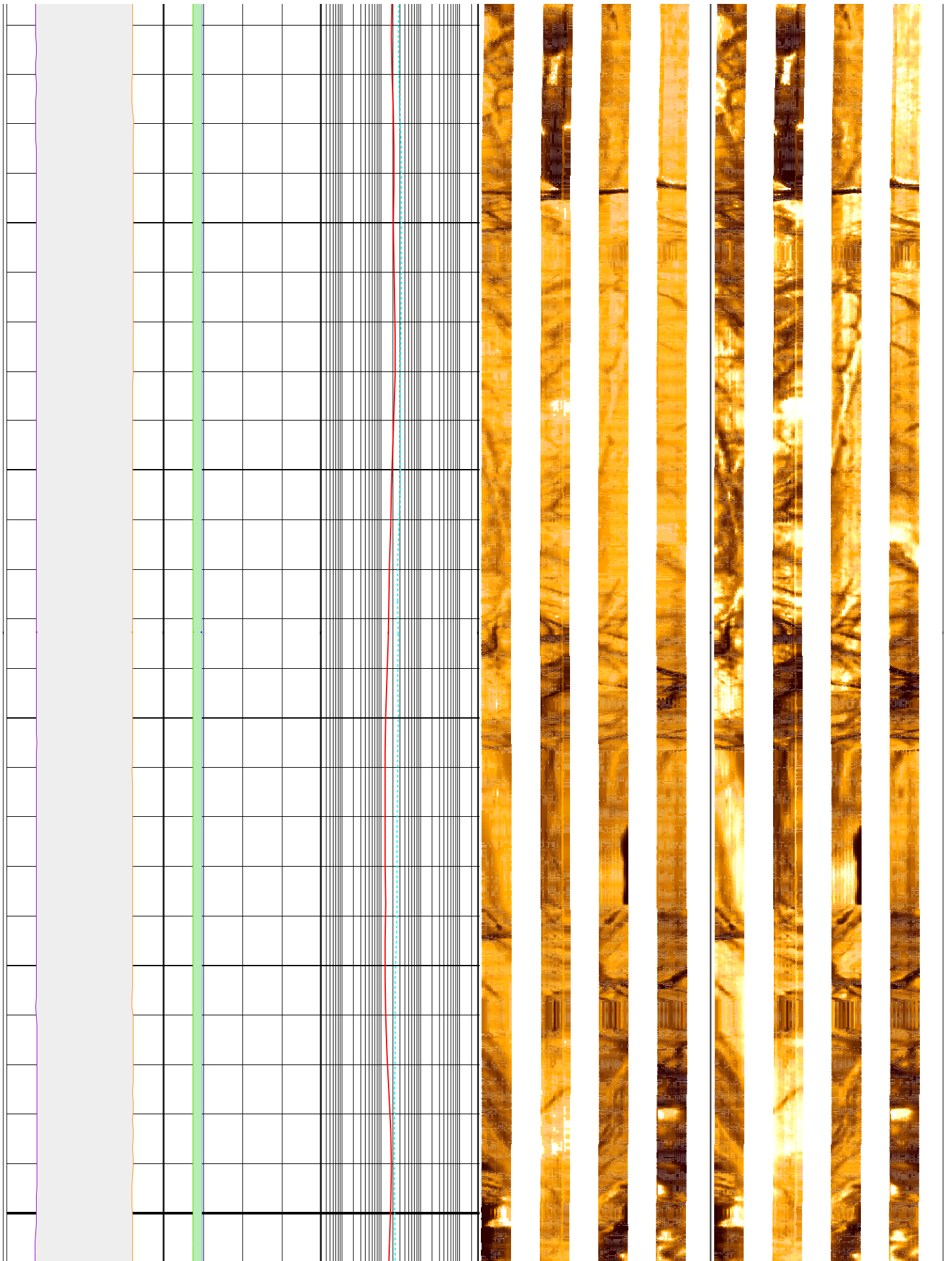
174

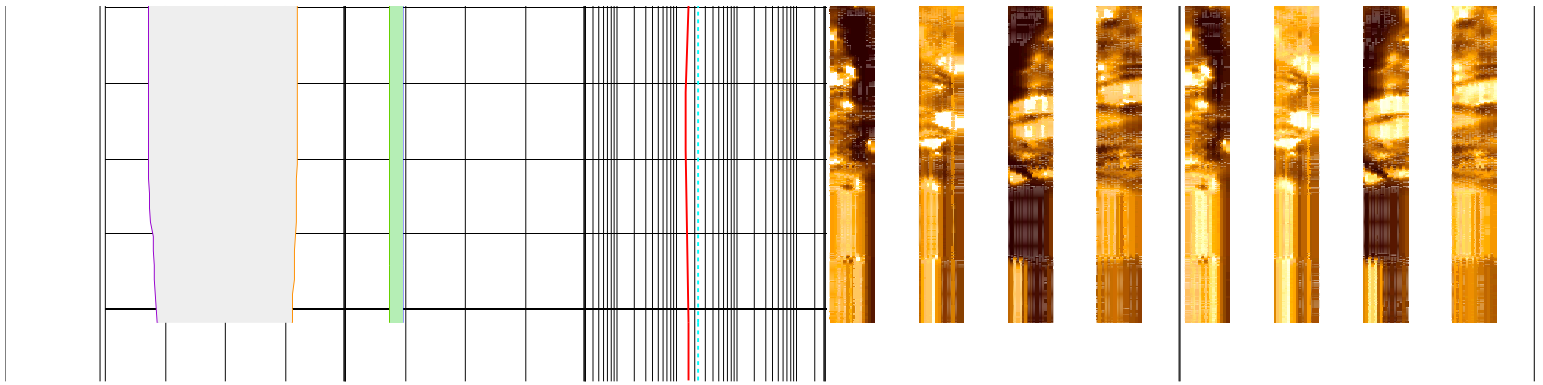




176

178

180





MD 1 : 20 m	lgp_Area_17_	lgp_Area_178	IDPH_DIT_mai 0.3 (ohm.m) 3000	FMS_repeat_static Horizontal Scale: 1 : 8.491 Orientation North 0 120 240 360 ResistiveFMS4 Image@conductive 	FMS_repeat-dynamic Horizontal Scale: 1 : 8.491 Orientation North 0 120 240 360 ResistiveFMS4 Image@conductive 
	C1_FMS_repea 16 (in) -16	HCGR_FMS_rep 0 (gAPI) 50	IMPH_DIT_mai 0.3 (ohm.m) 3000		
	C2_FMS_repea -16 (in) 16	HSGR_FMS_rep 0 (gAPI) 50			