



GEOFRAME
PROCESSED
INTERPRETATION

Processed LWD Images

Depth Reference: m LSF

* A Mark of Schlumberger

Using the following logs:

adhVISION
TeleScope
arcVISION

COMPANY:

Exp 334 Hole U1379A

WELL:

CRISP

FIELD:

Puntarenas

County:

State:

Costa Rica

COUNTRY:

19-Mar-2011

Date Logged:

Date Processed:

Well Location:

n/a

Elevations:

KB:

DF: 9.8m

GL: -133m

API Number:

n/a

Job Number:

FOLD HERE The well name, location and borehole reference data were furnished by the customer.

All interpretations are opinions based on inferences from electrical or other measurements and we cannot, and do not guarantee the accuracy or correctness of any interpretation, and we shall not, except in the case of gross or willful negligence on our part, be liable or responsible for any loss, costs, damages or expenses incurred or sustained by anyone resulting from any interpretations made by any of our officers, agents or employees. These interpretations are also subject to Clause 4 of our General Terms and Conditions as set out in our current Price Schedule.

Field Recording:	Location: n/a	Software Version: 20C0-999	Engineer: Carrillo/Garcia
------------------	---------------	----------------------------	---------------------------

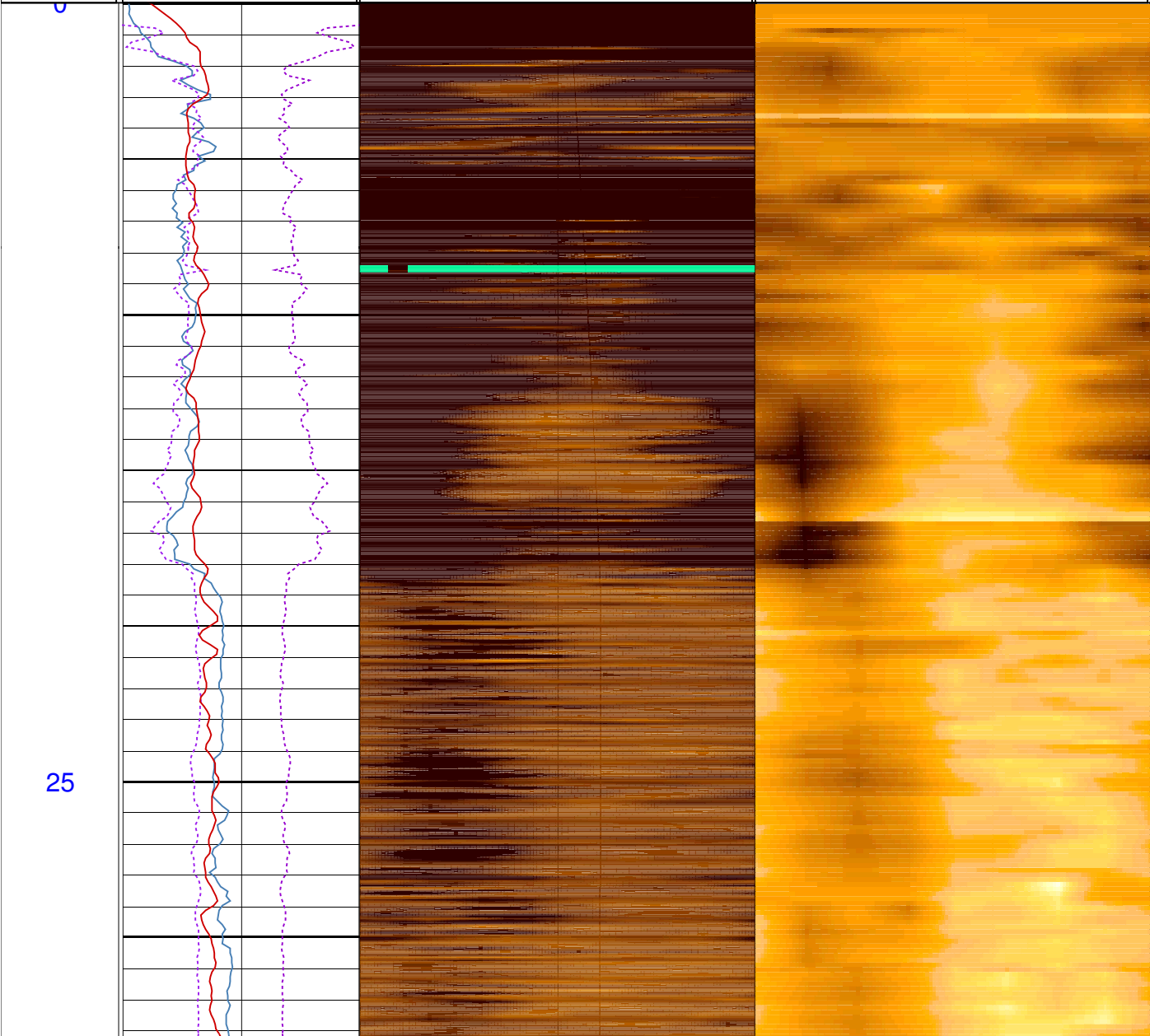
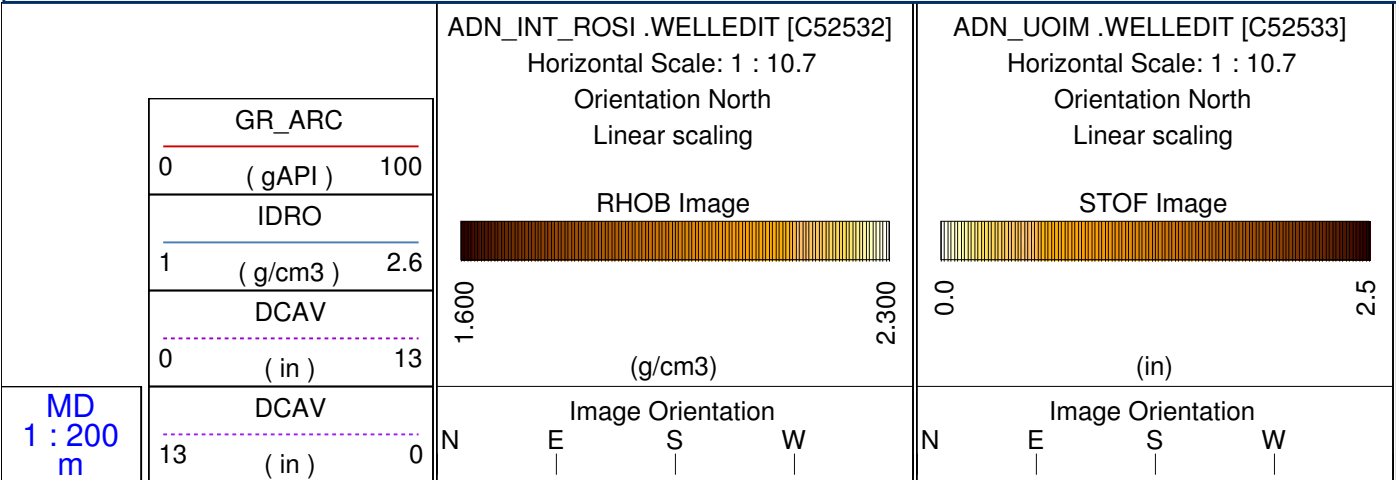
Office Recording:	ICS Center:	Baseline:	Log Analyst:
-------------------	-------------	-----------	--------------

Mud and Borehole Measurements:

Rm @ Measured Temperature: 0.2ohm.m @ 23.8889degC	BHT: 100degC	Bitsize: 8.5in
Rmf @ Measured Temperature: 0.15ohm.m @ 20degC	Type Fluid in Hole:	Sea Water
Rmc @ Measured Temperature: @ 20degC	Mud Density: 1.03g/cm3	

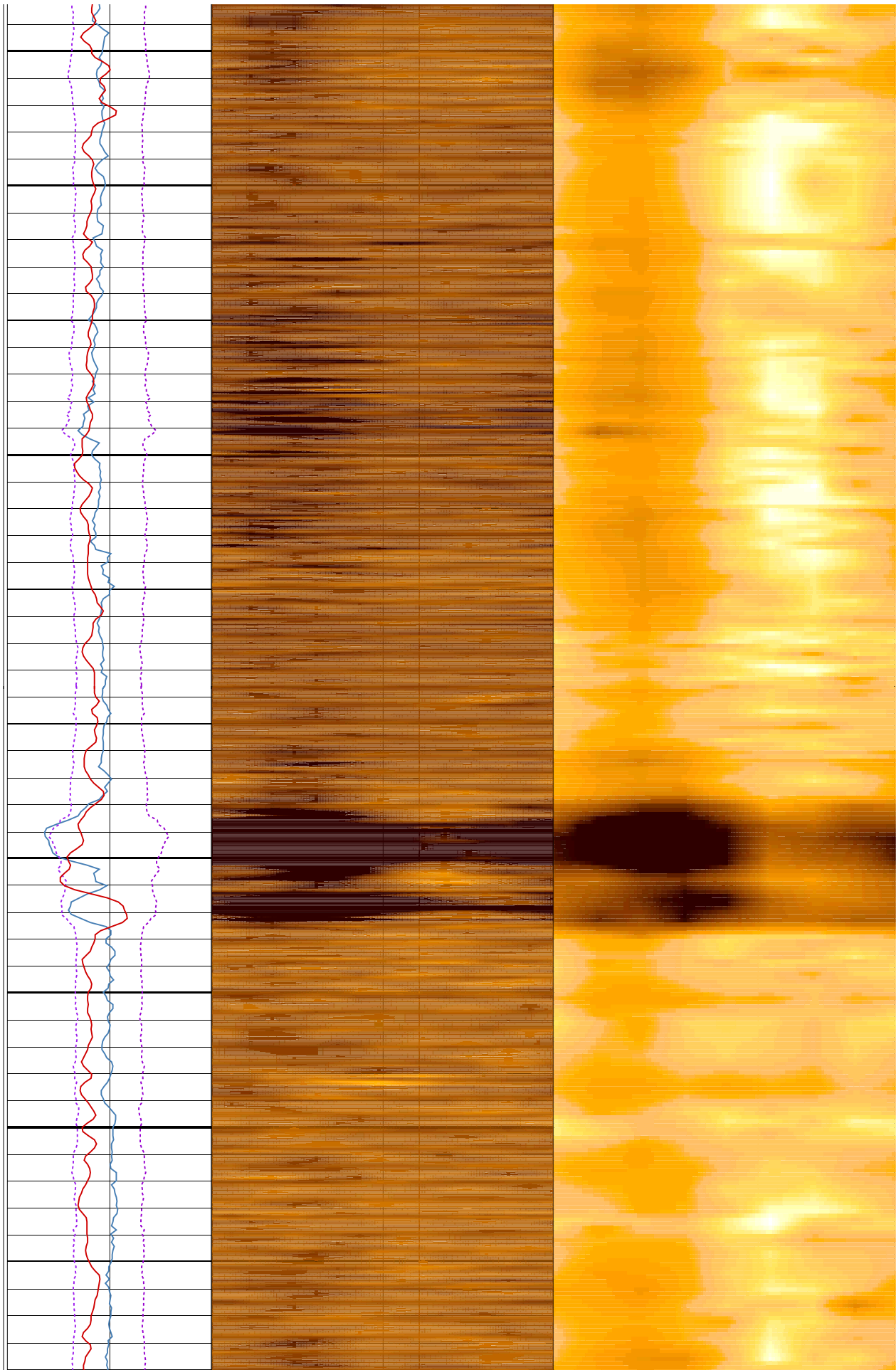
Remarks:

Data depth-shifted. Depth reference: m LSF. Water depth at 133 m LRF.



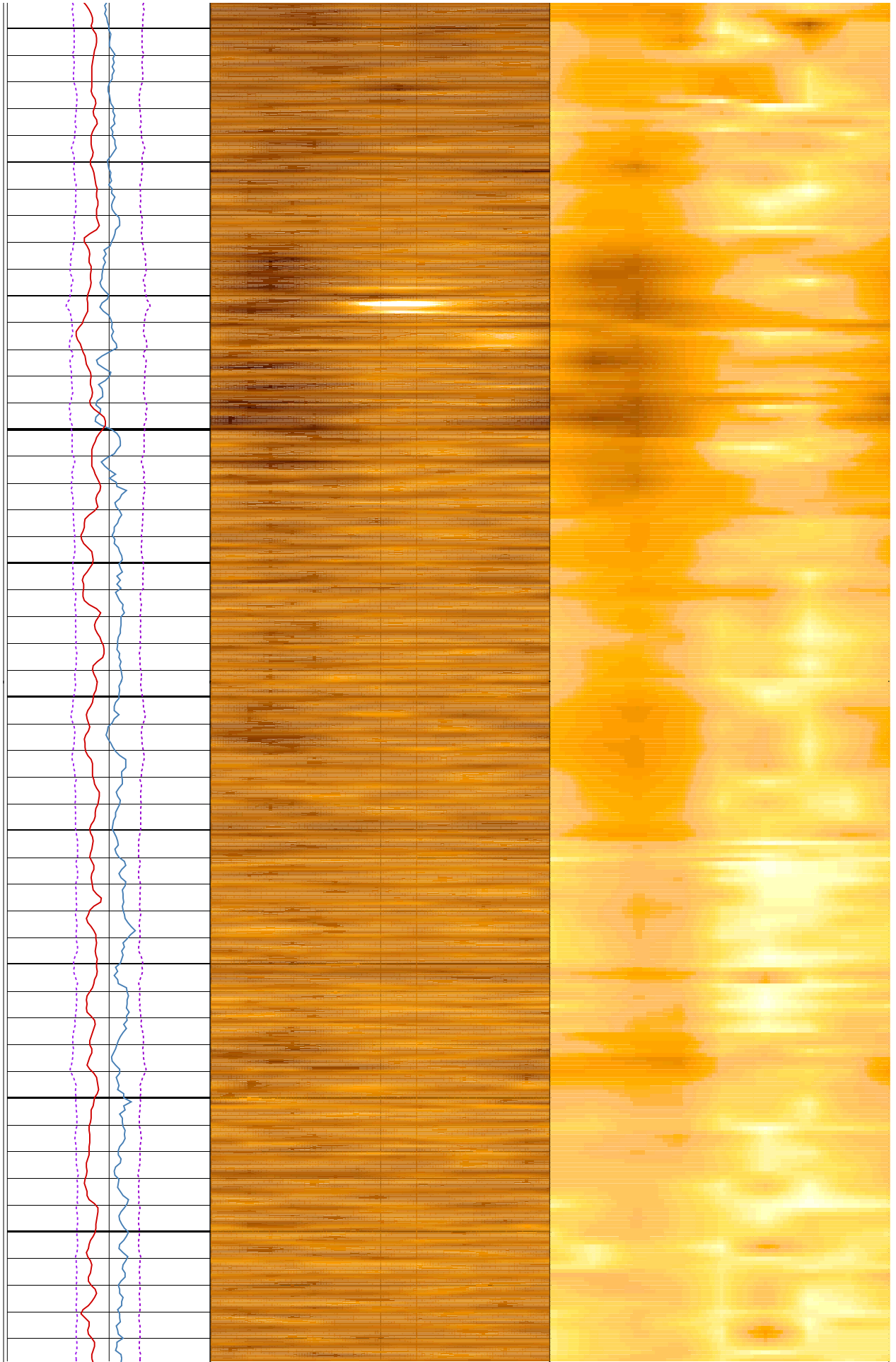
50

75



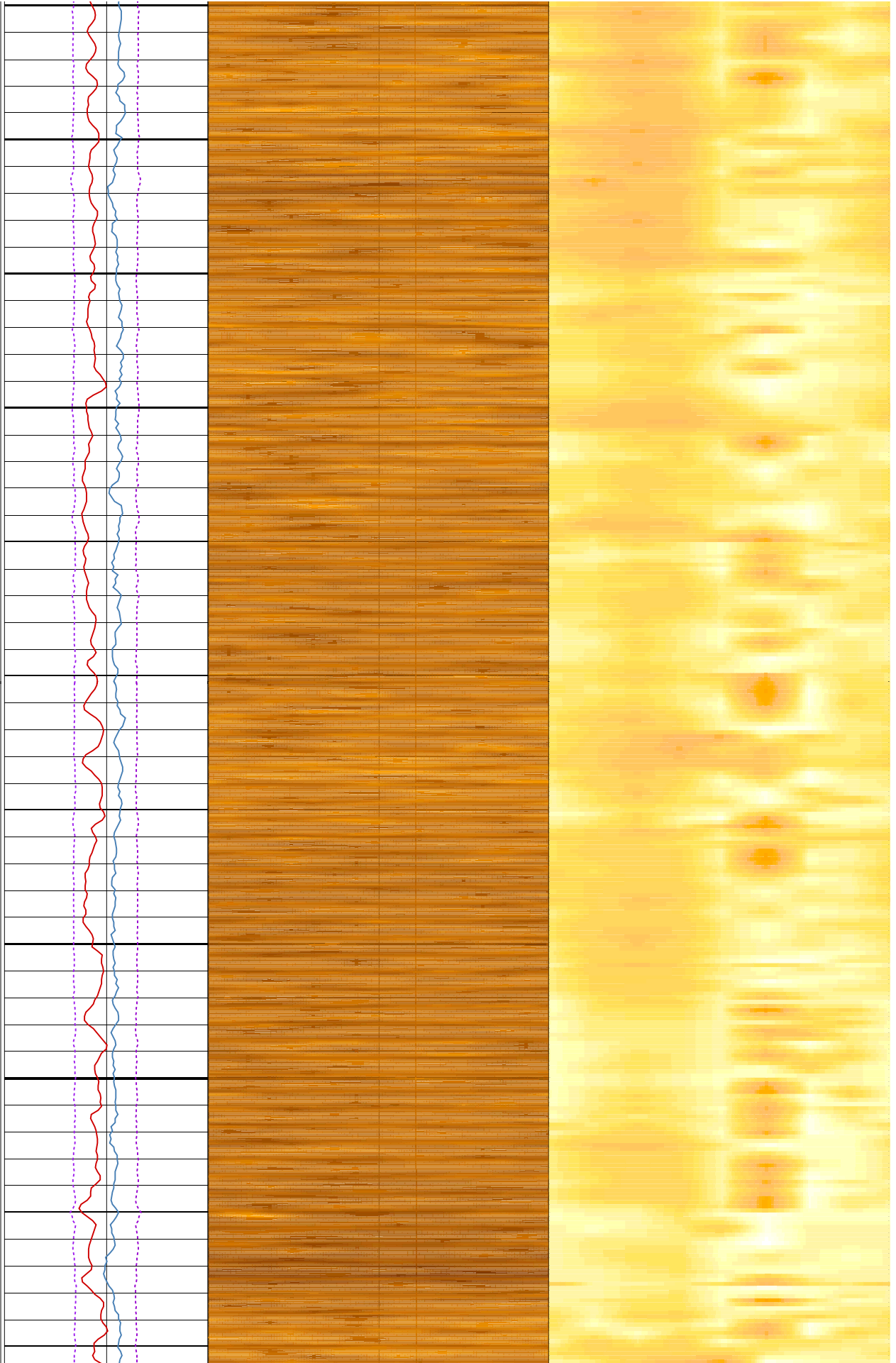
100

125



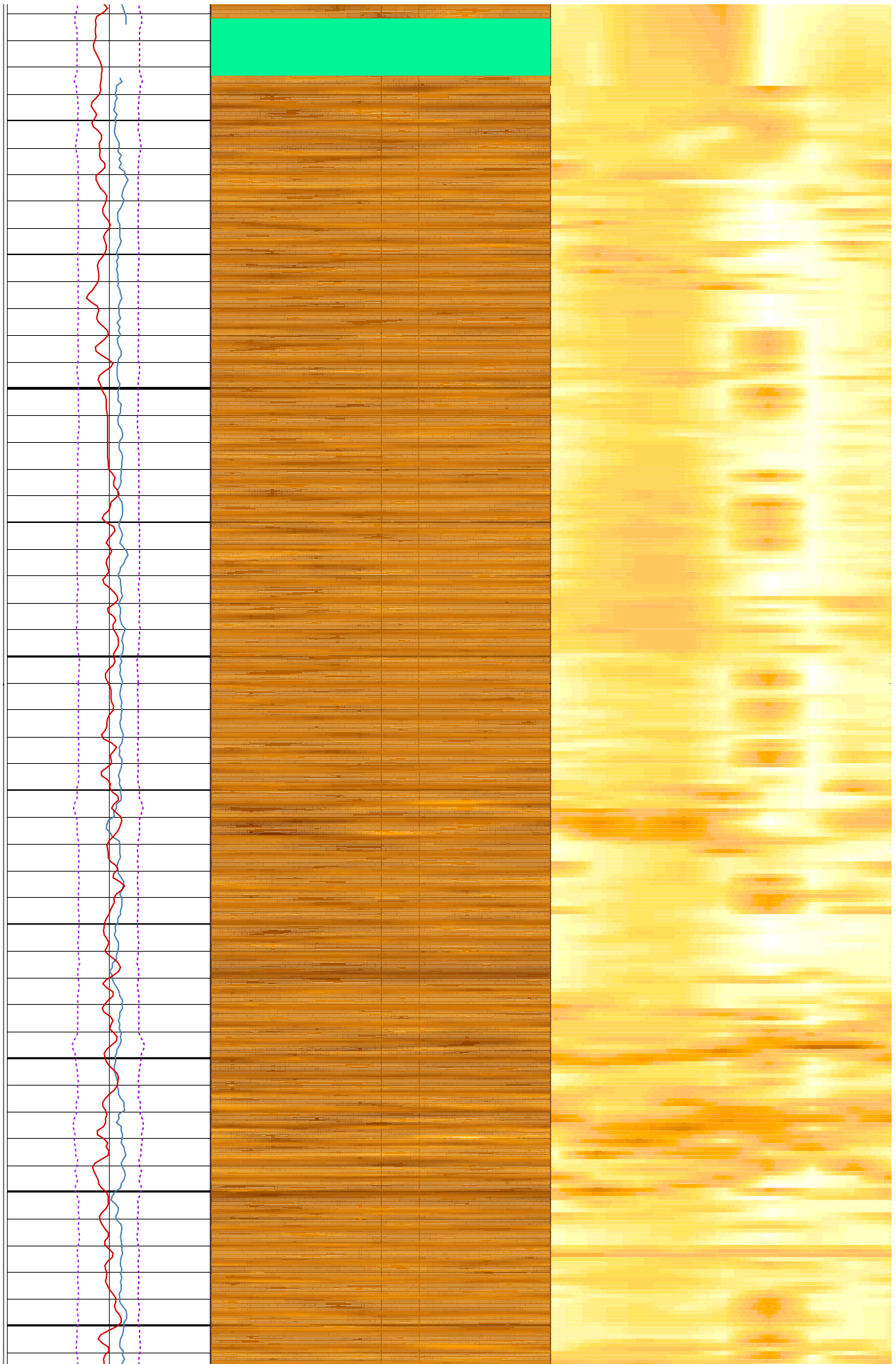
150

175



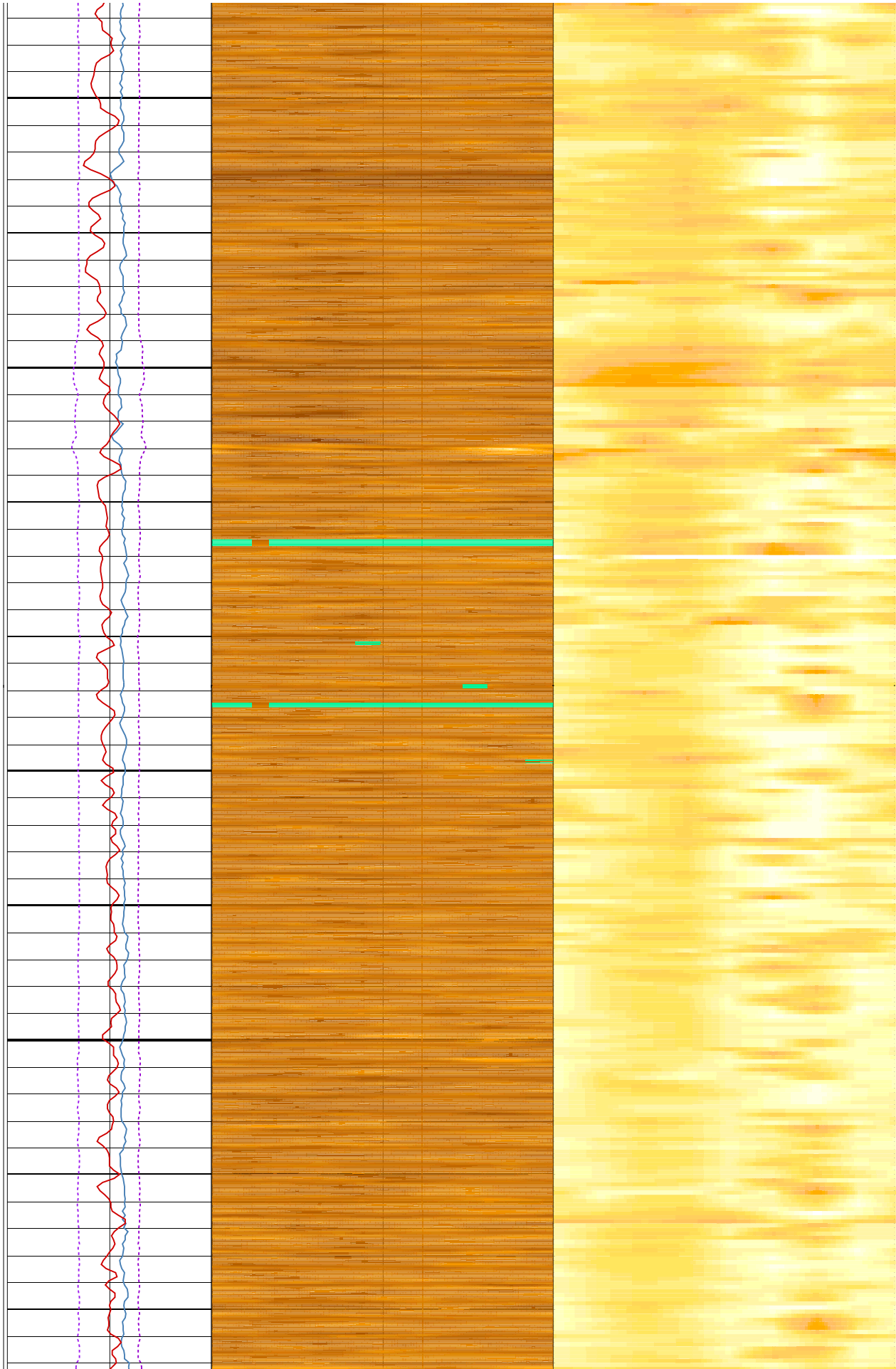
200

225



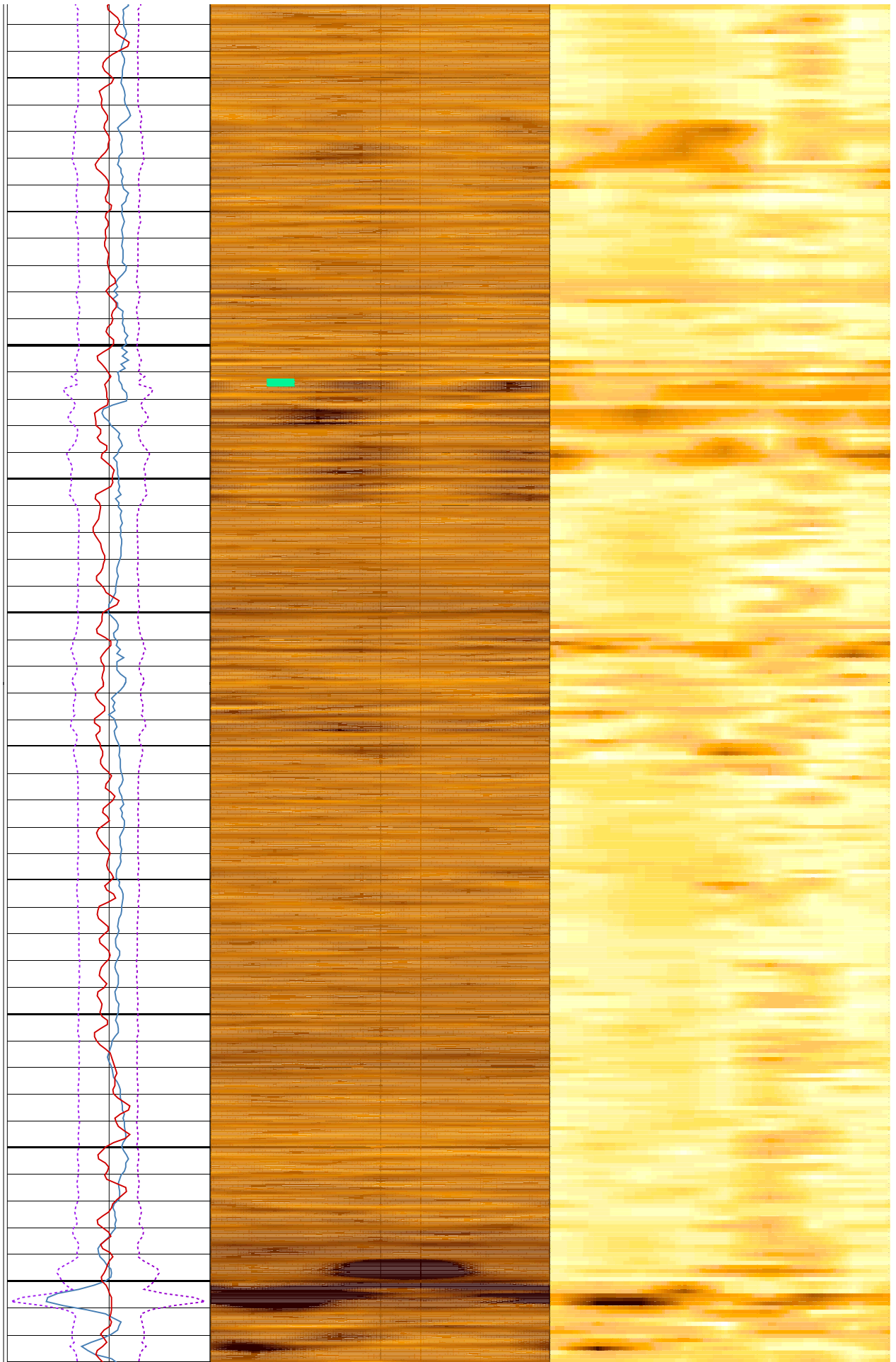
250

275



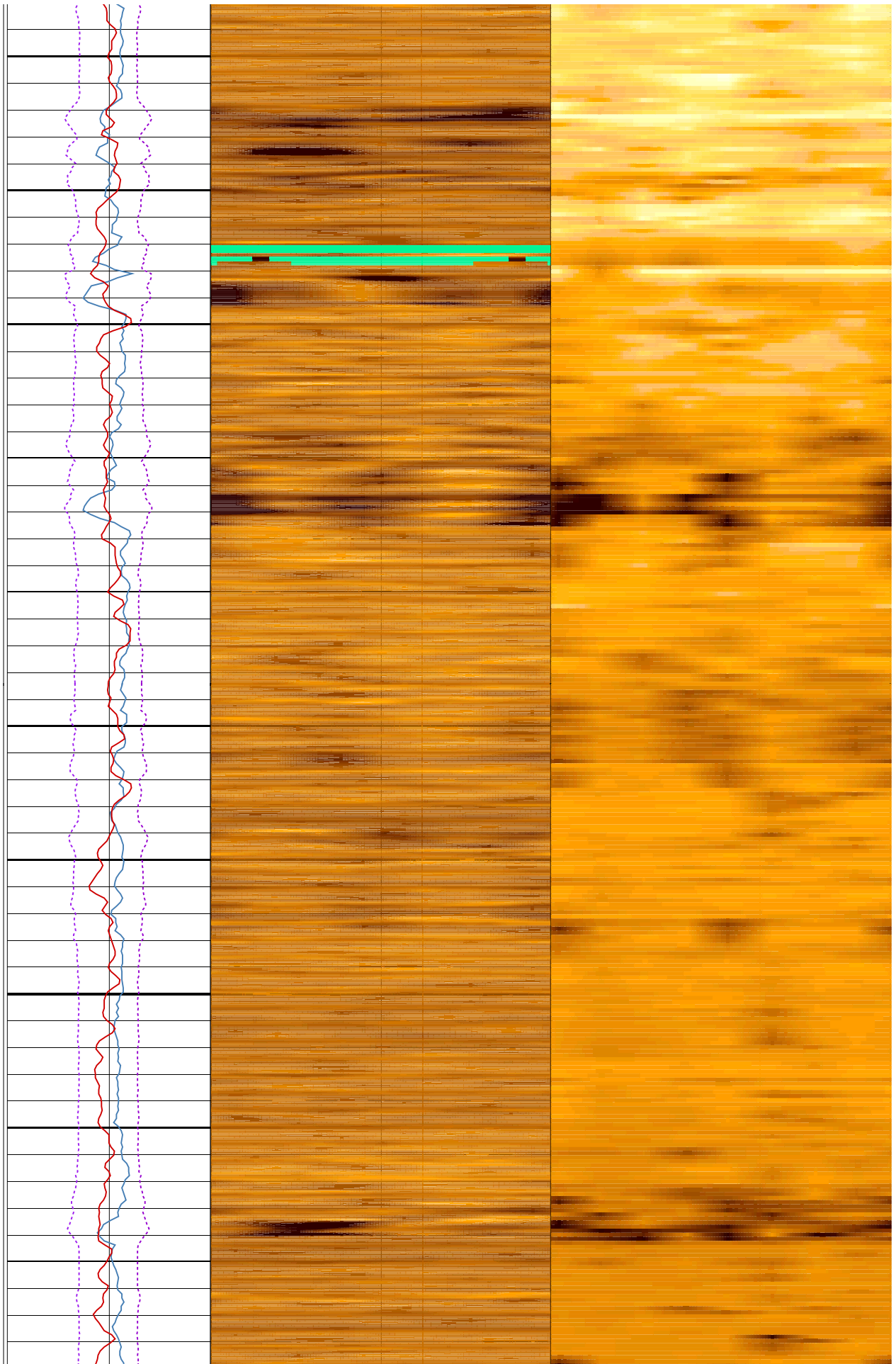
300

325



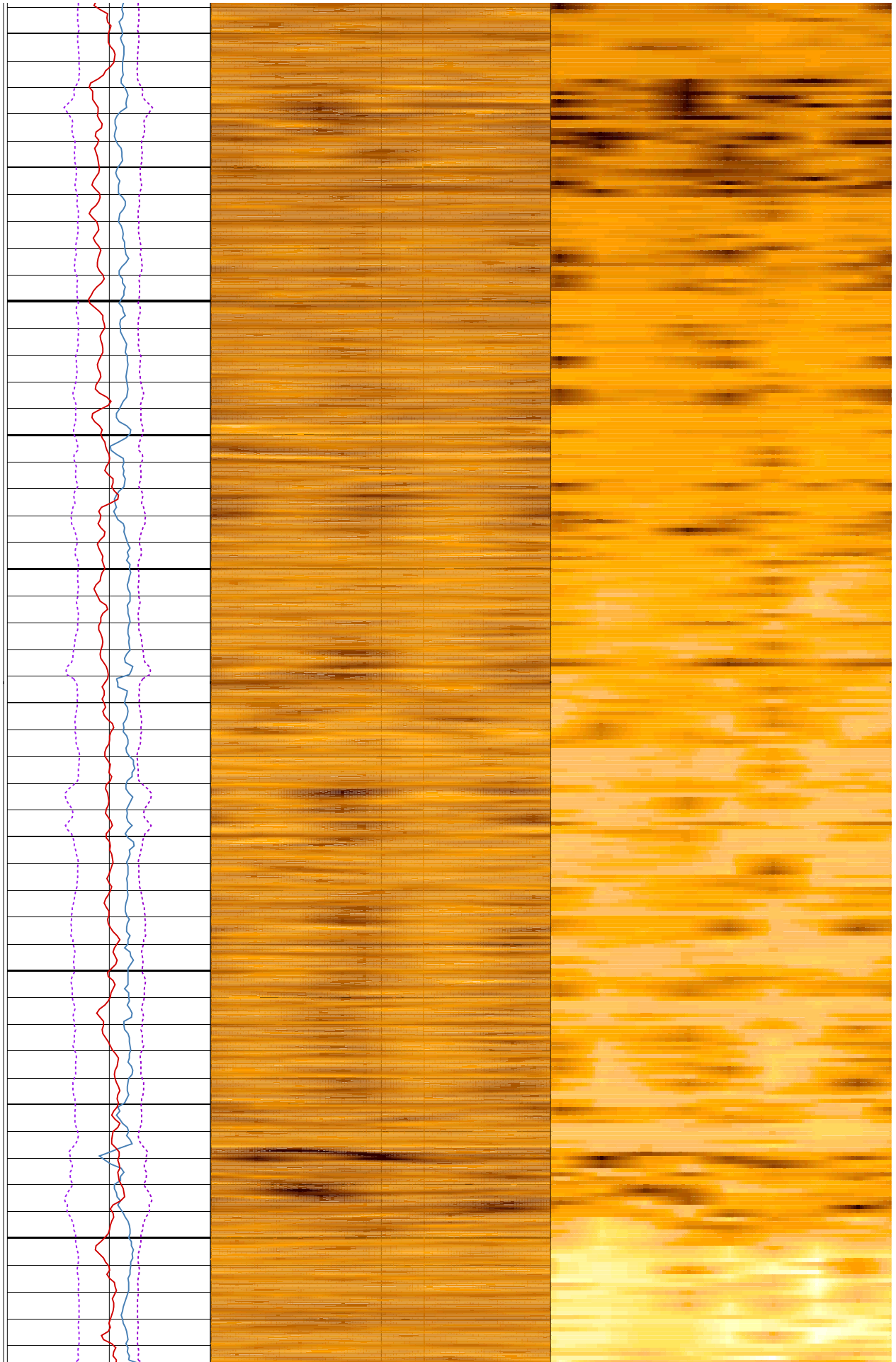
350

375



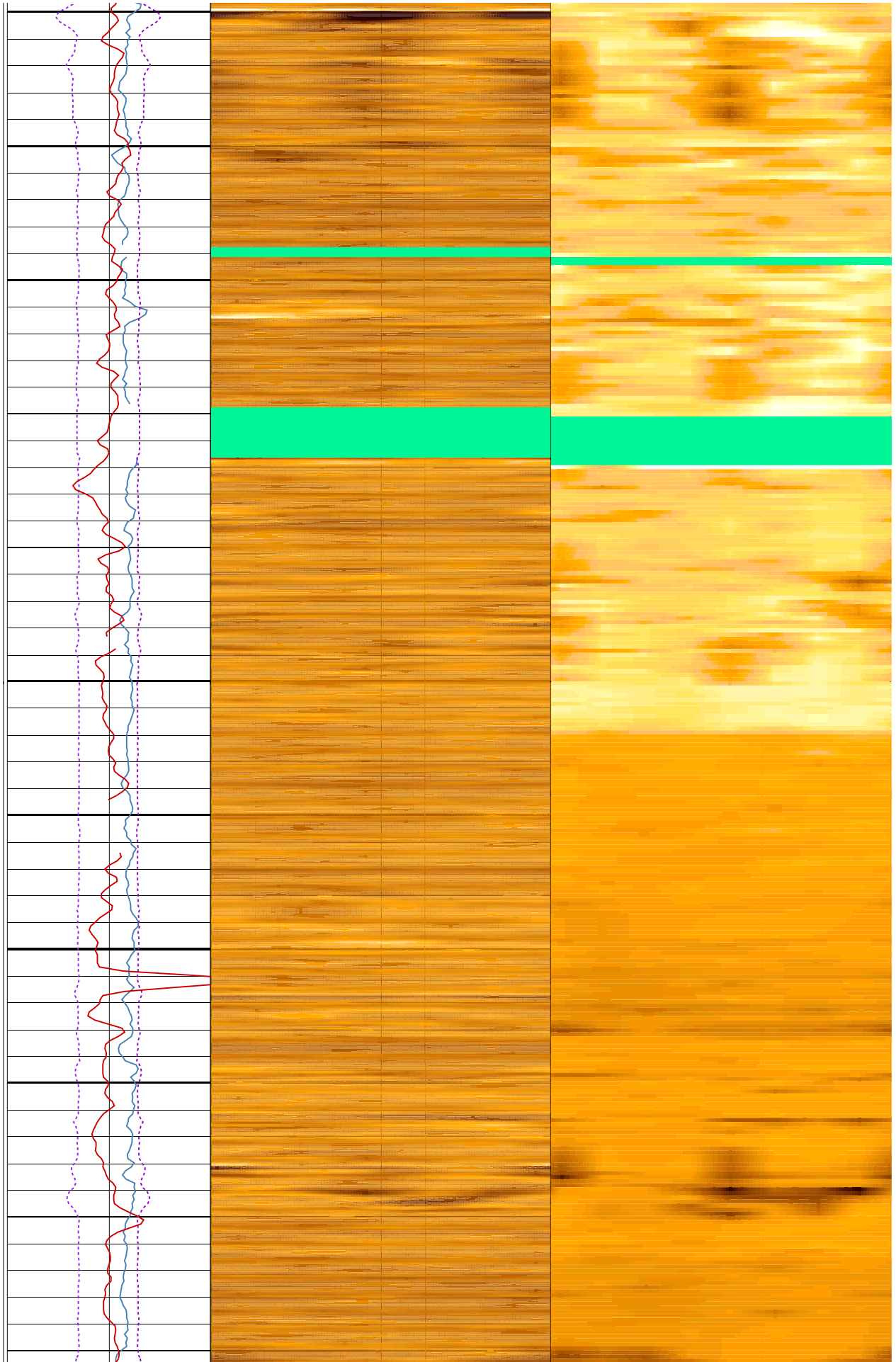
400

425



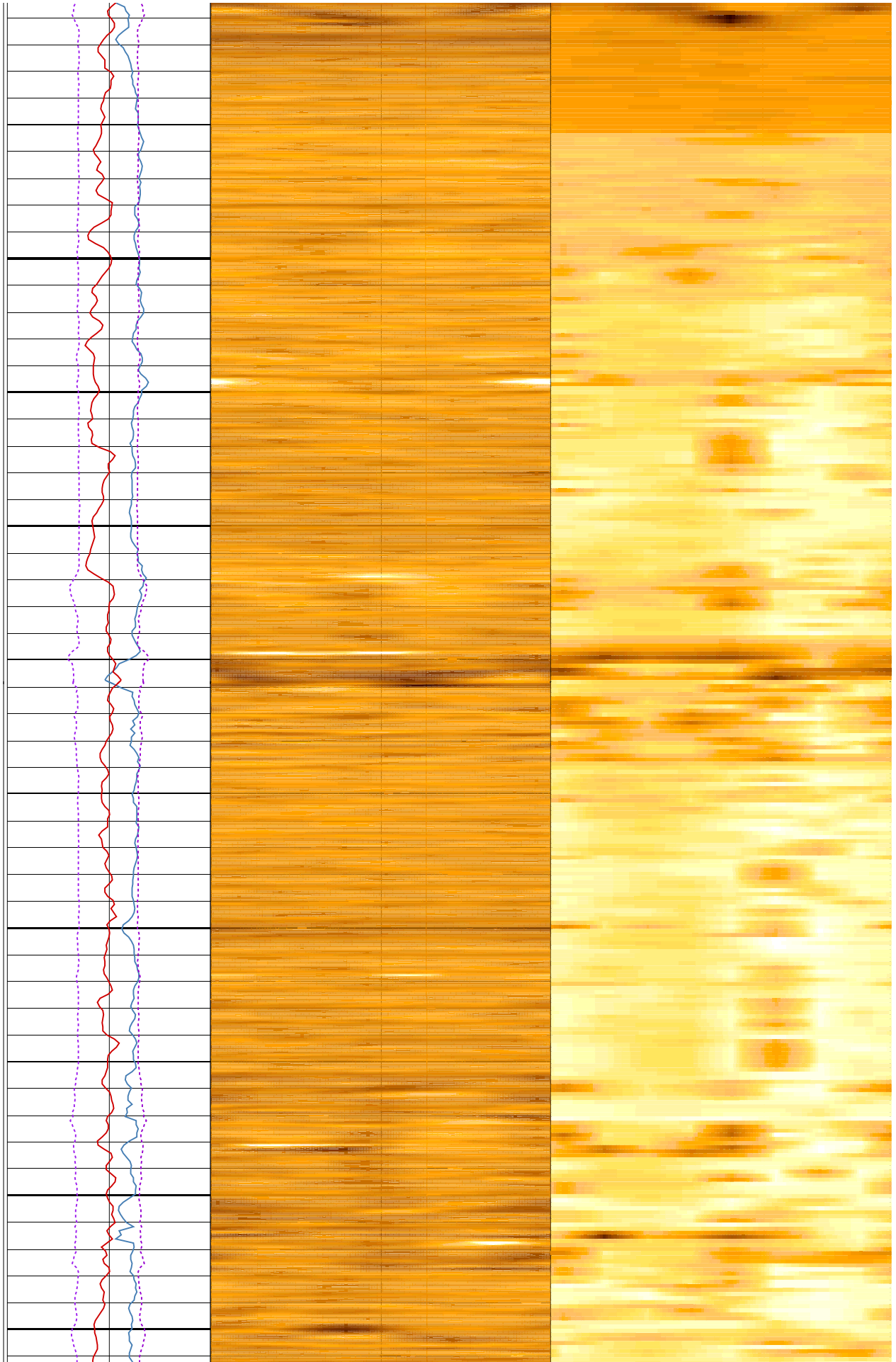
450

475



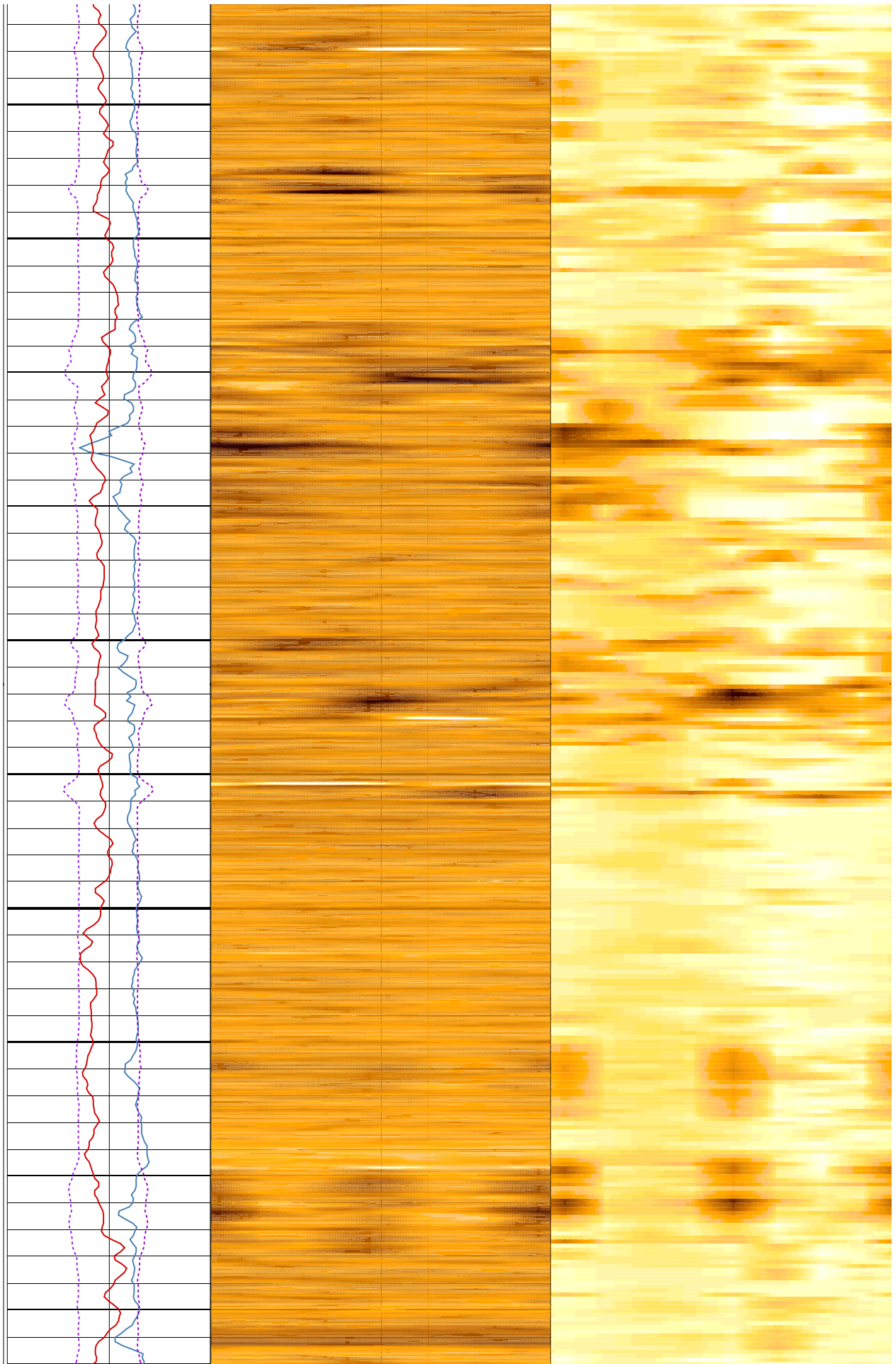
500

525



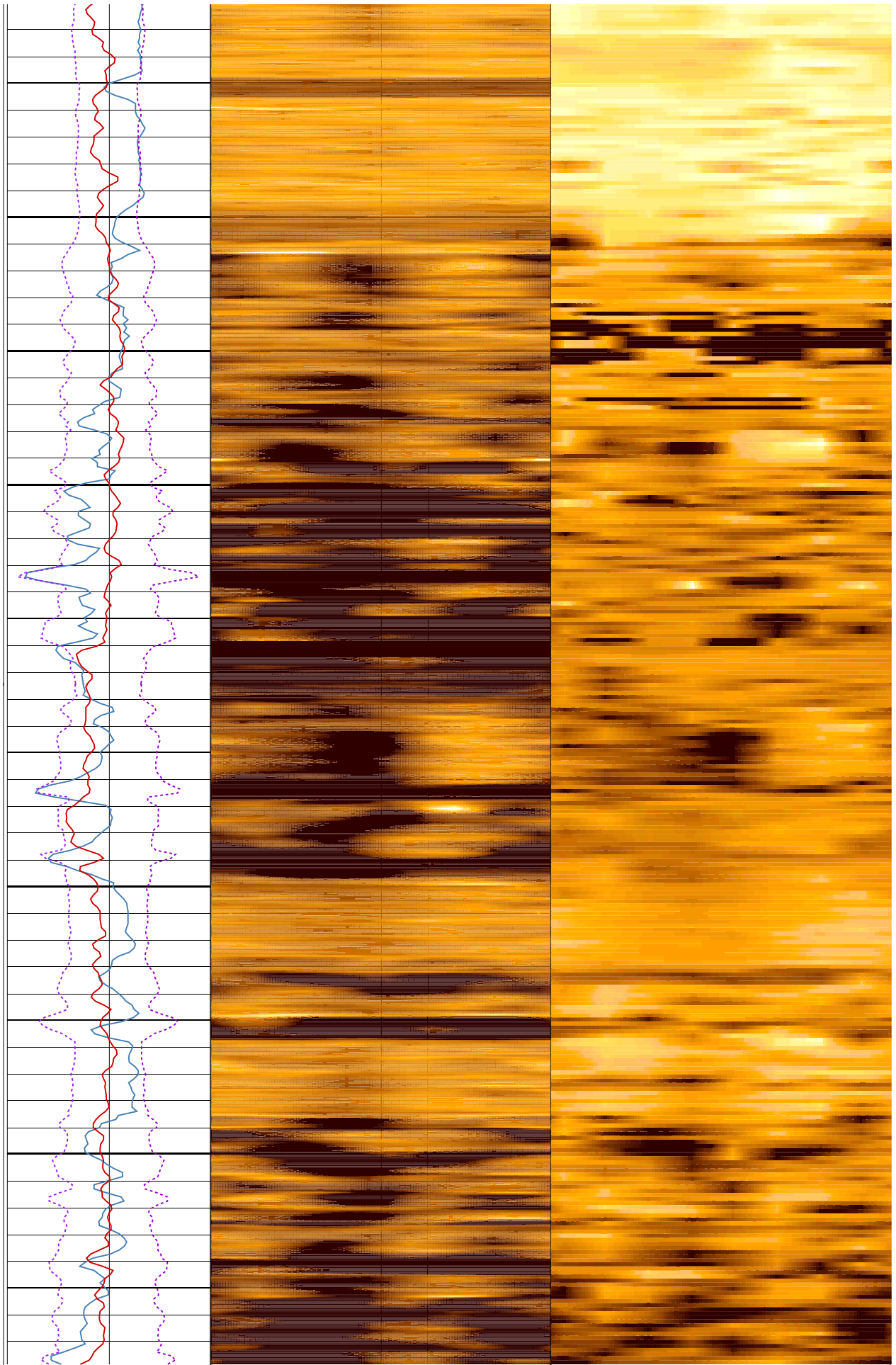
550

575



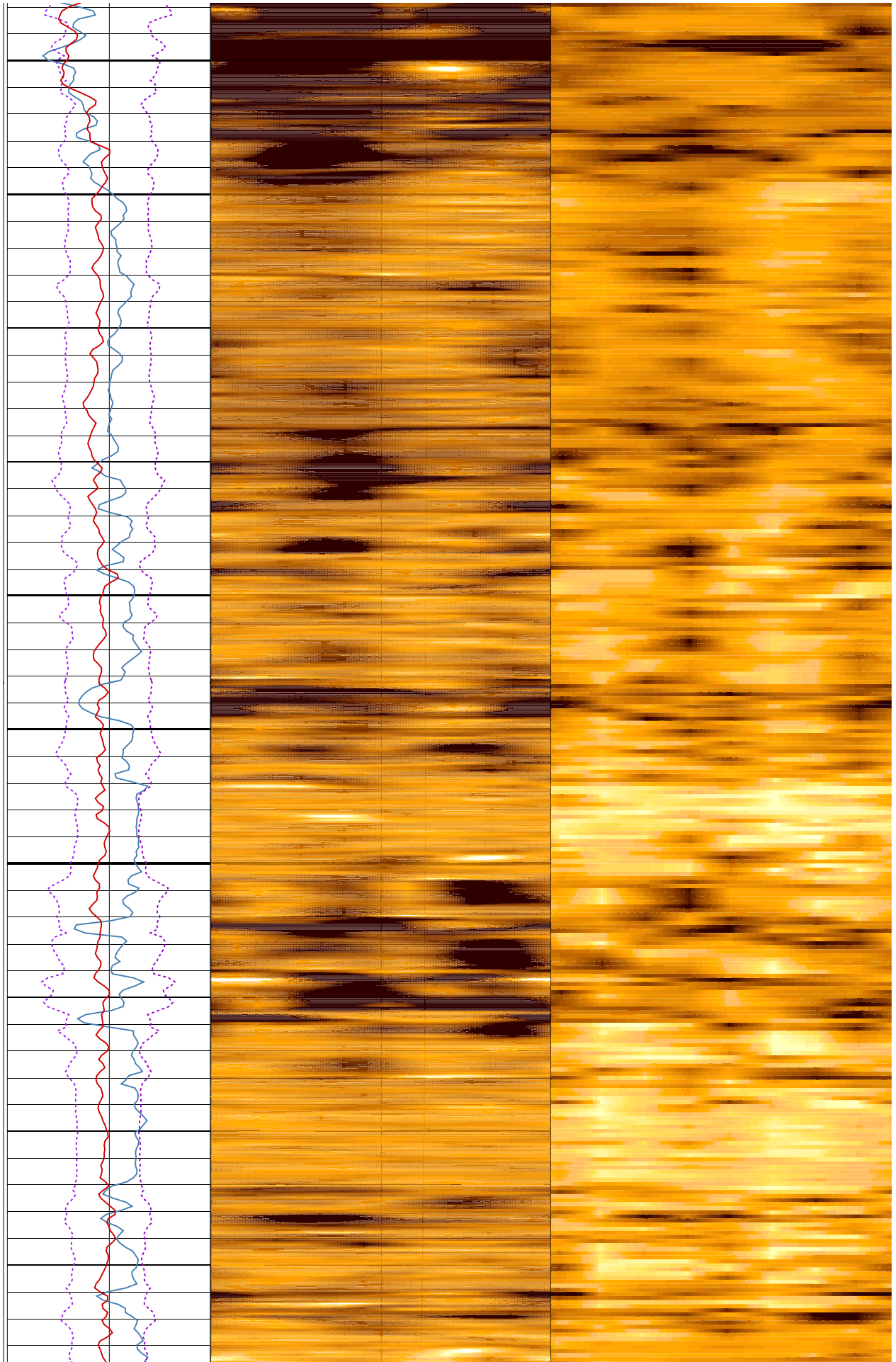
600

625



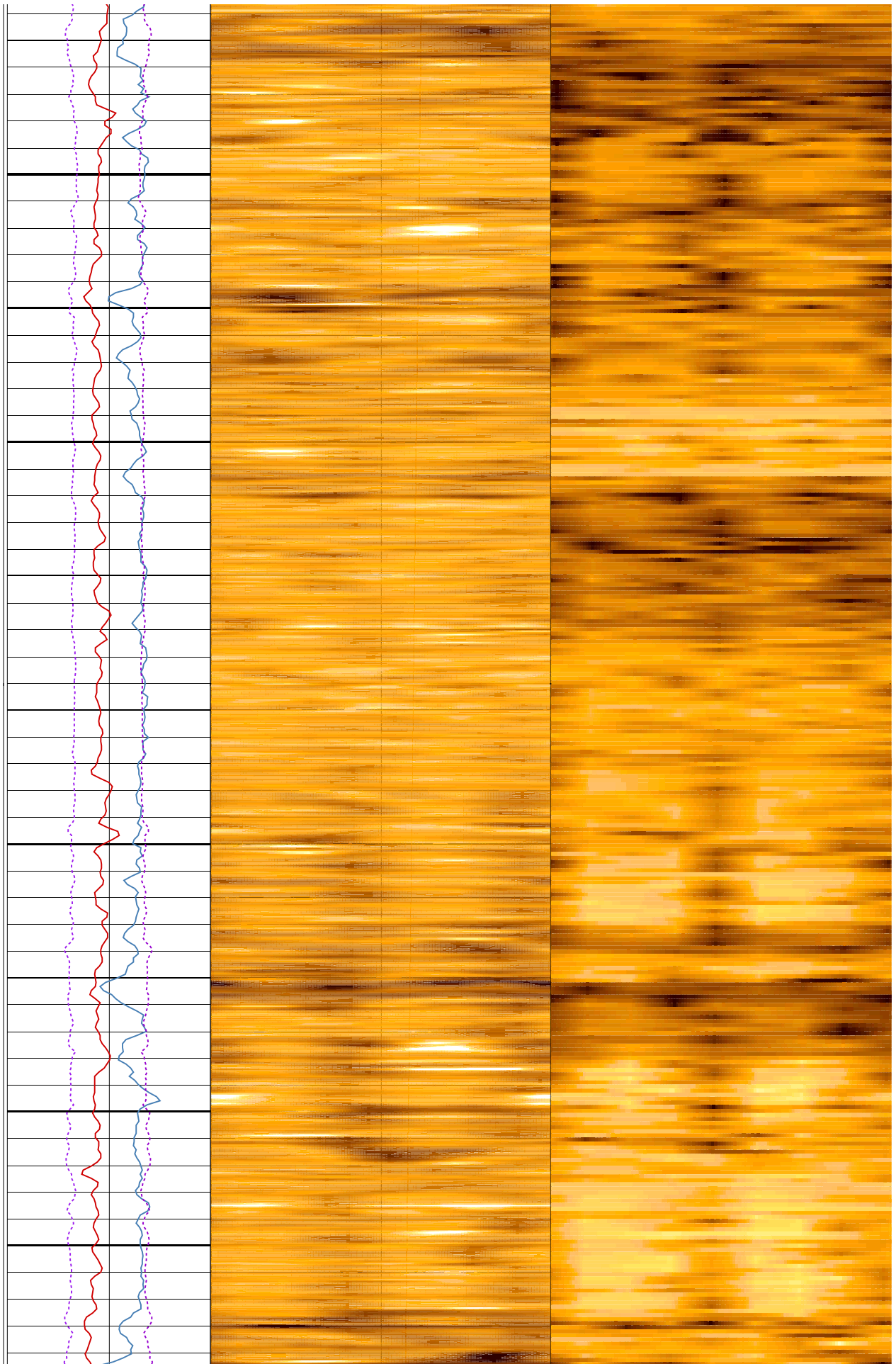
650

675



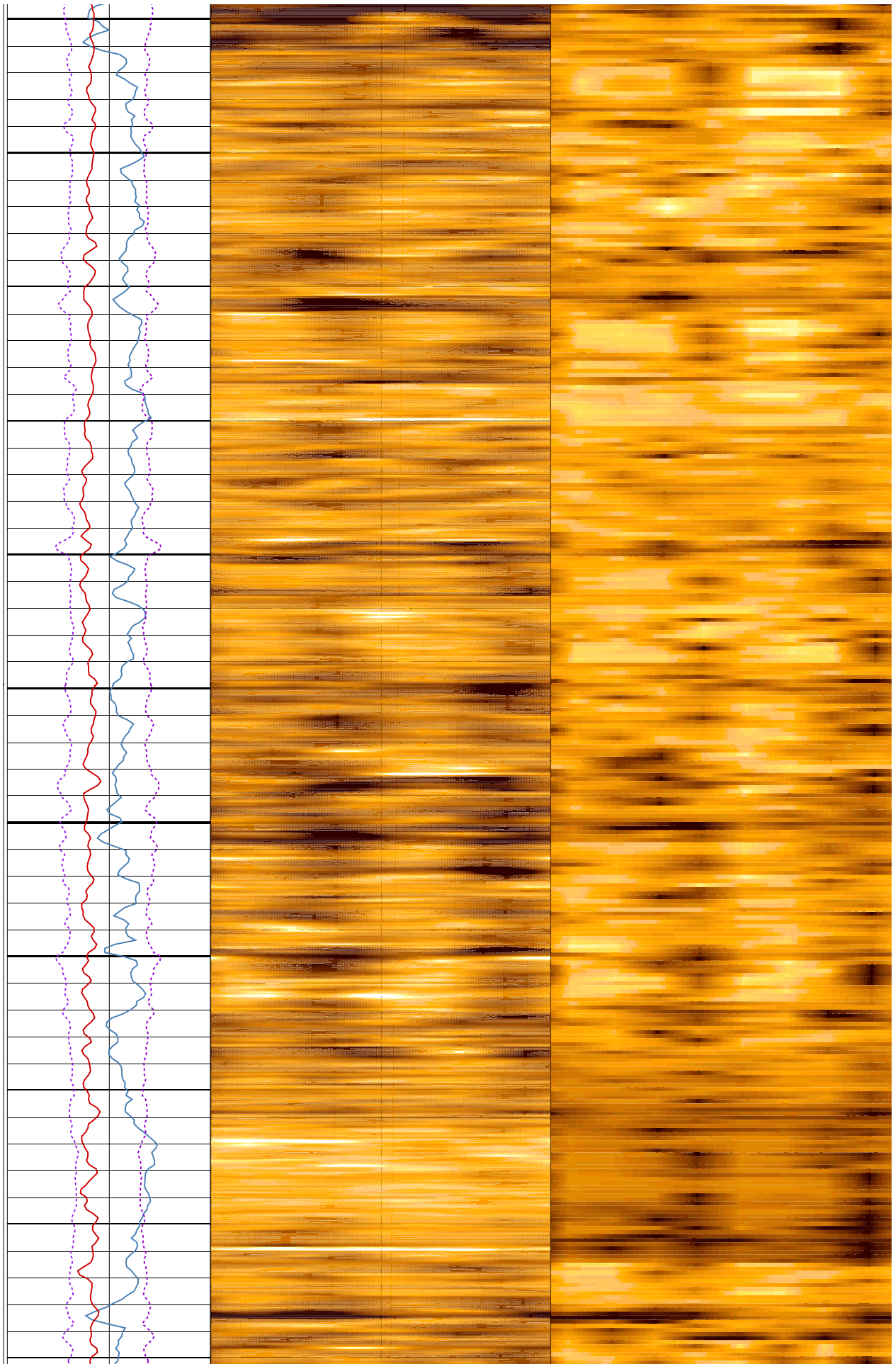
700

725



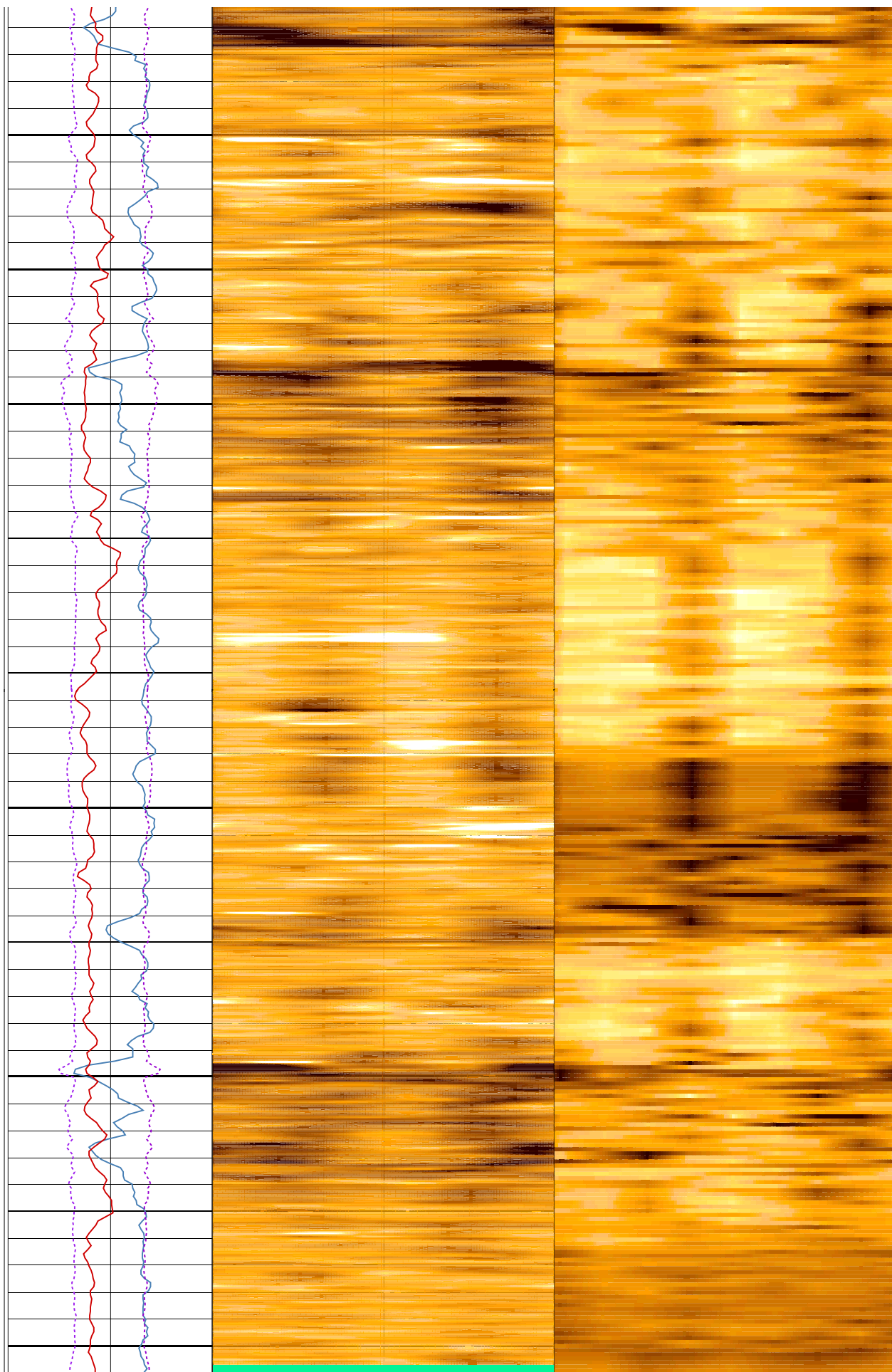
750

775



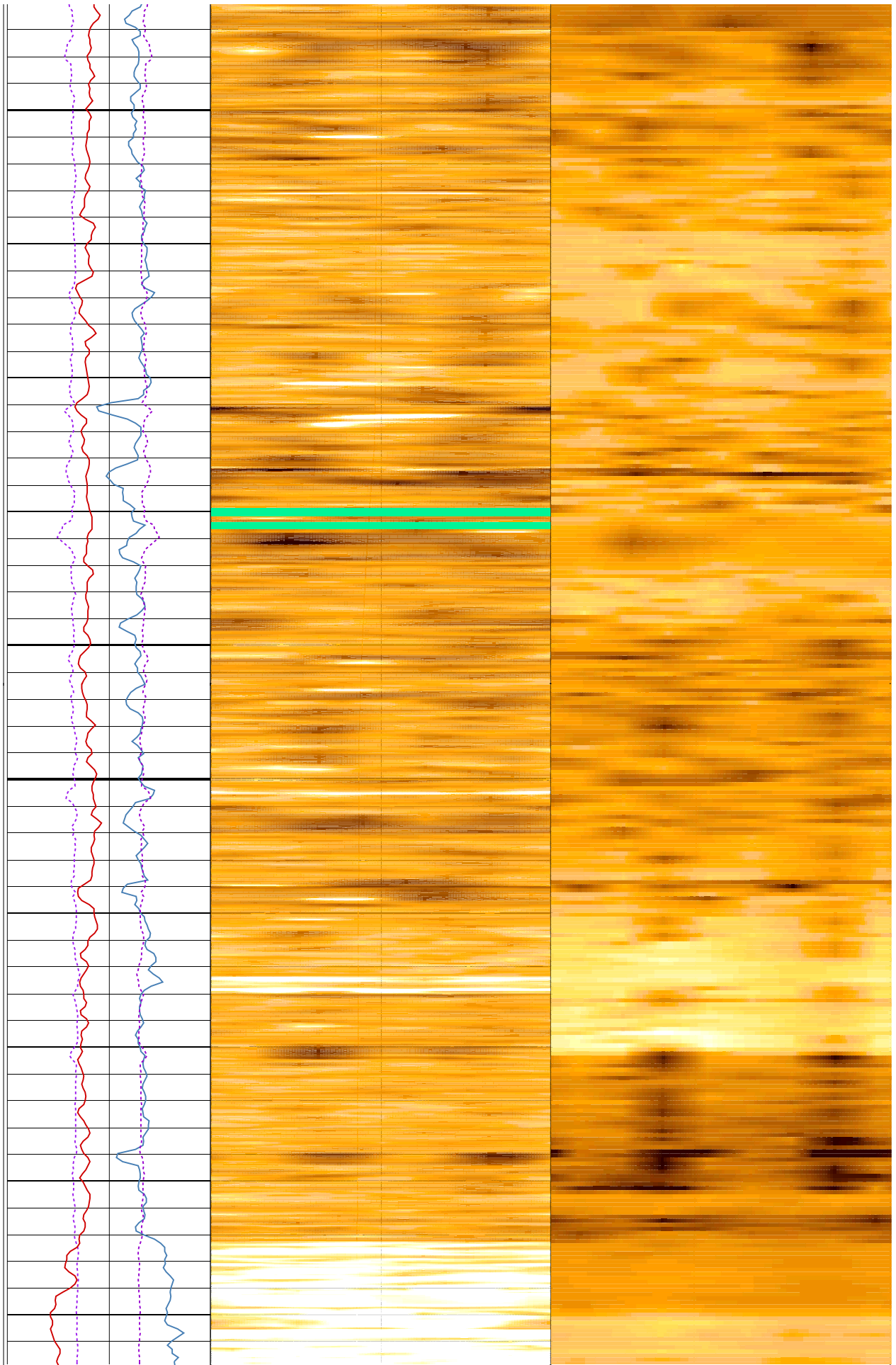
800

825



850

875



900

925

