

# FMS Static and Dynamic

COMPANY: Lamont Doherty

WELL: ODP Leg 193, Site 1188F, Snowcap

FIELD: Manus Basin

STATE: Papua New Guinea

COUNTRY:

Date Processed:

Date Logged:

Job Number:

Processed at:

Well Location:

Latitude: 3° 43.6855' S

Longitude:

151° 40.191' E

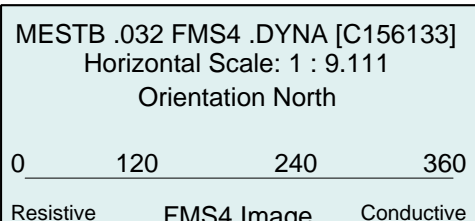
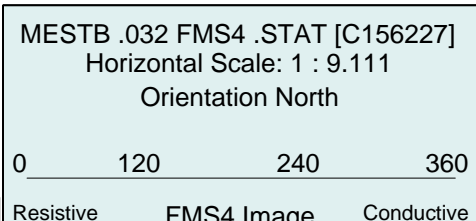
Elevations: KB: 11.2m

DF: 10.9m

GL: -1653m

FOLD HERE The well name, location and borehole reference data were furnished by the customer.

All interpretations are opinions based on inferences from electrical or other measurements and we cannot, and do not guarantee the accuracy or correctness of any interpretation, and we shall not, except in the case of gross or willful negligence on our part, be liable or responsible for any loss, costs, damages or expenses incurred or sustained by anyone resulting from any interpretations made by any of our officers, agents or employees. These interpretations are also subject to Clause 4 of our General Terms and Conditions as set out in our current Price Schedule.



MD  
1 : 20  
m

FMS Image

FMS Image

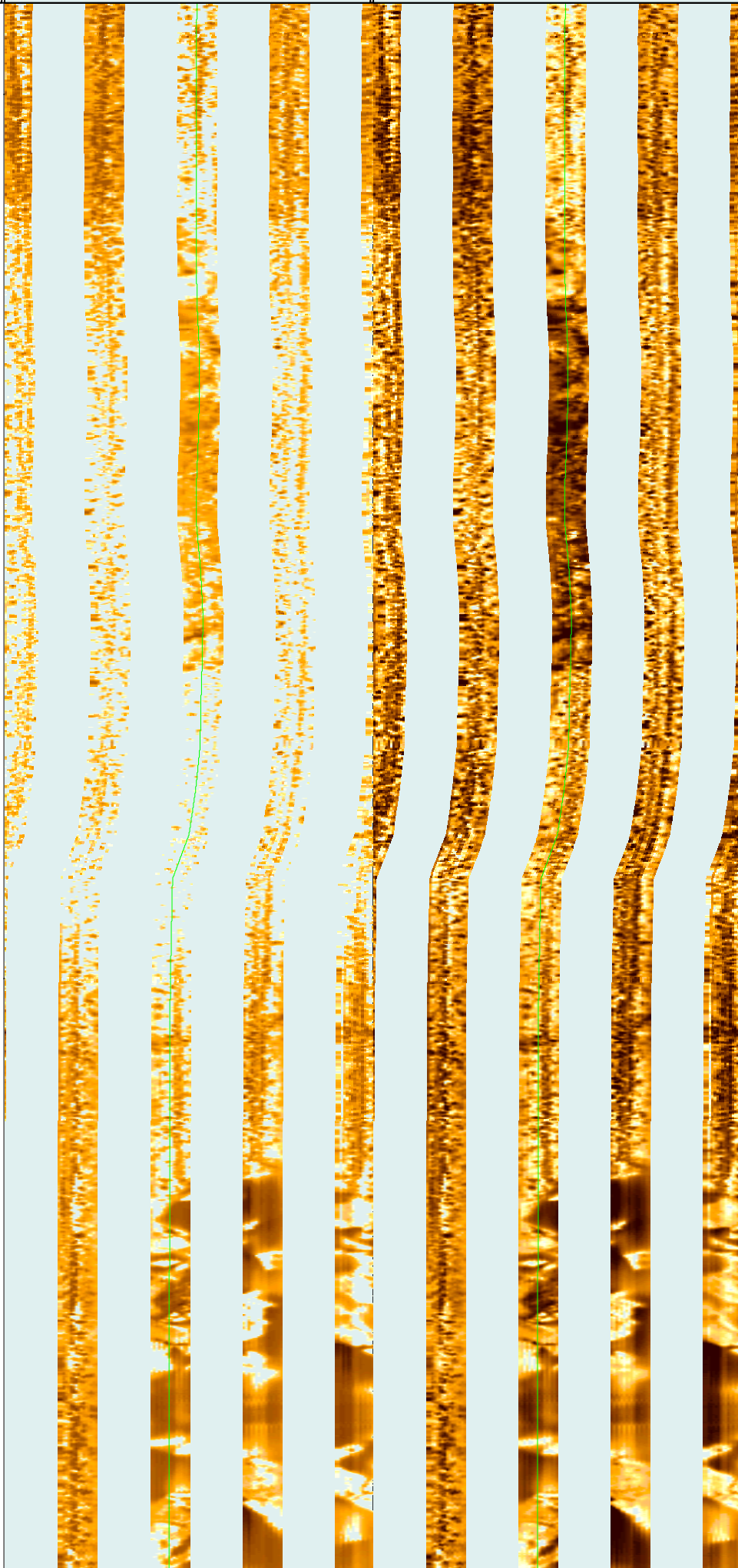
191

192

193

194

195





196

197

198

199

200

201

201

202

203

204

205

206



207

208

209

210

211

212

213

214

215

216

217



218

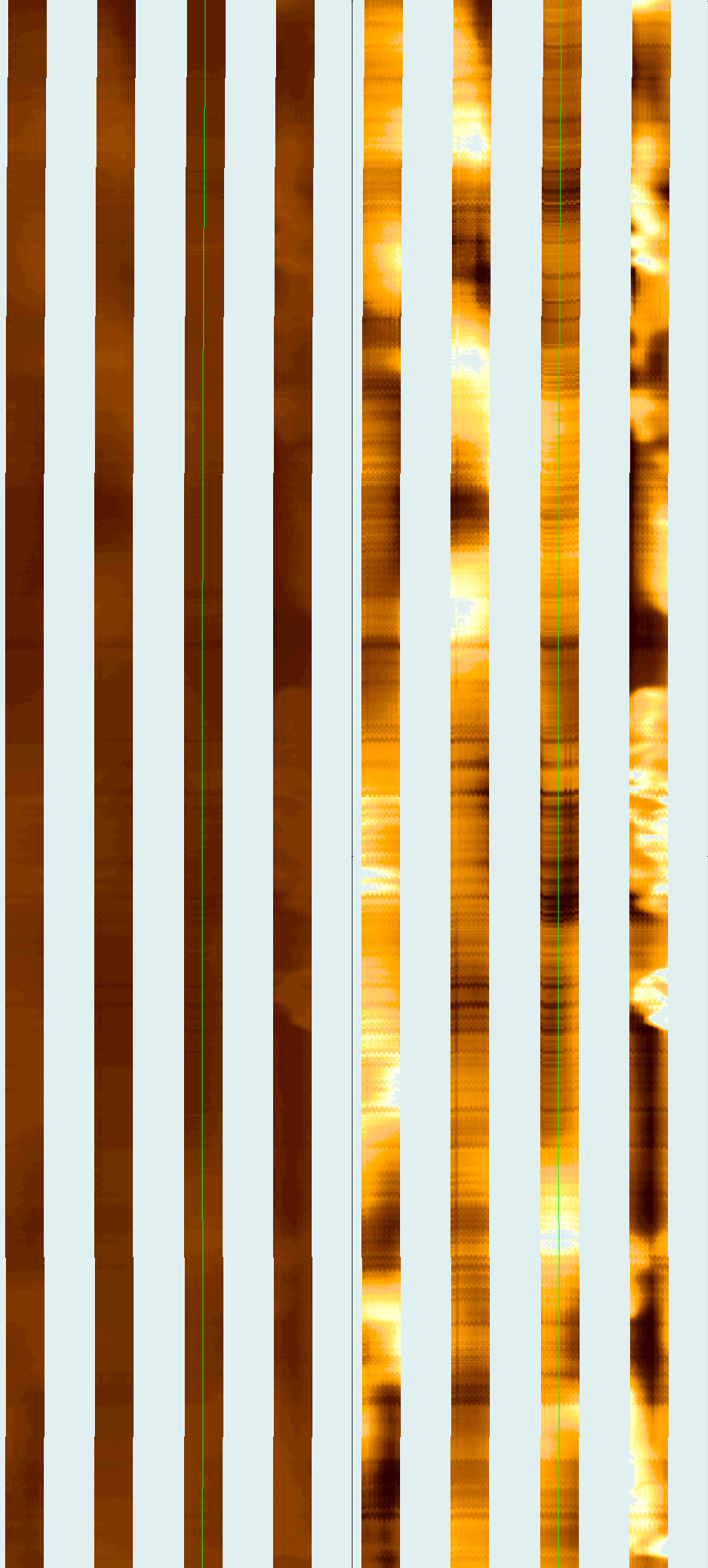
219

220

221

222

223





224

225

226

227

228



229

230

231

232

233

234



235

236

237

238

239

240



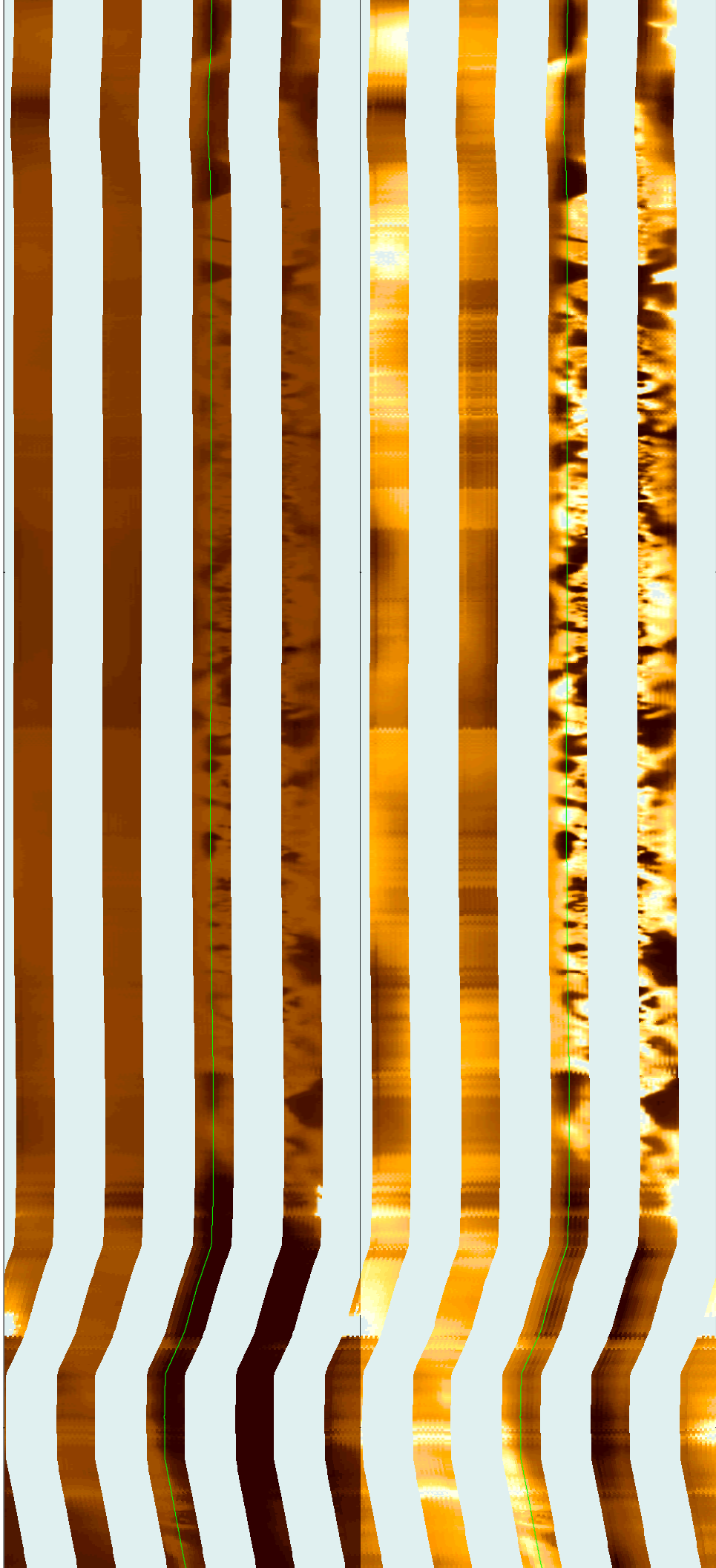
241

242

243

244

245



246

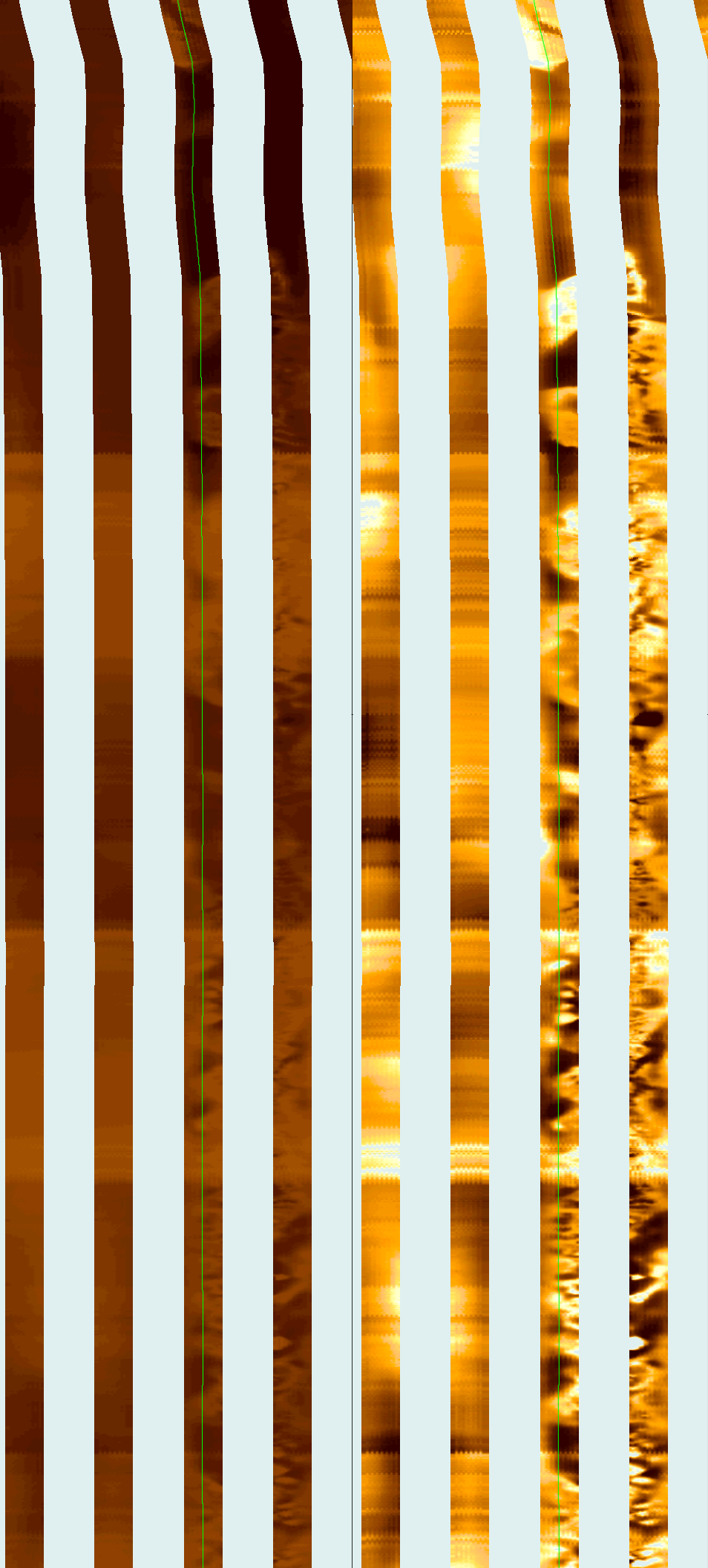
247

248

249

250

251





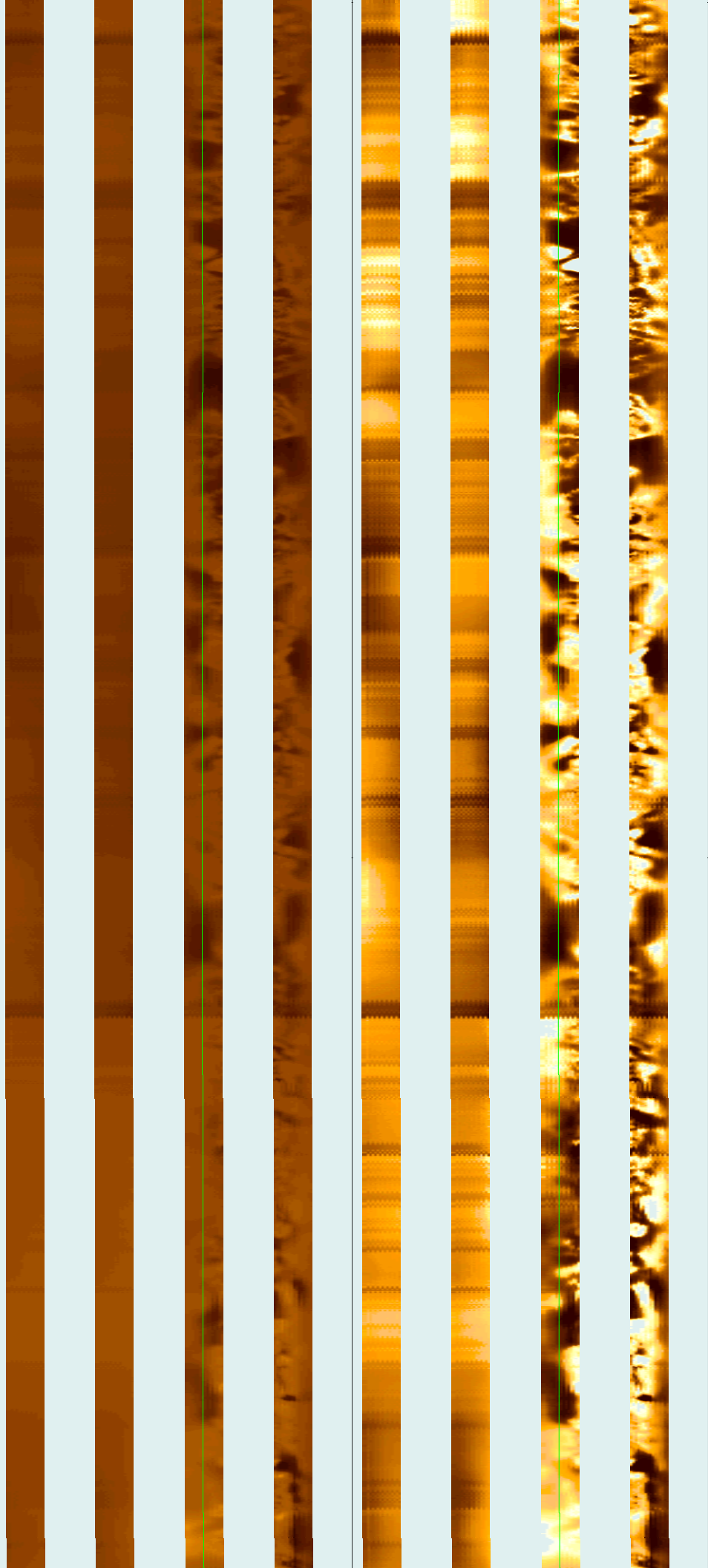
252

253

254

255

256



257

258

259

260

261

262



263

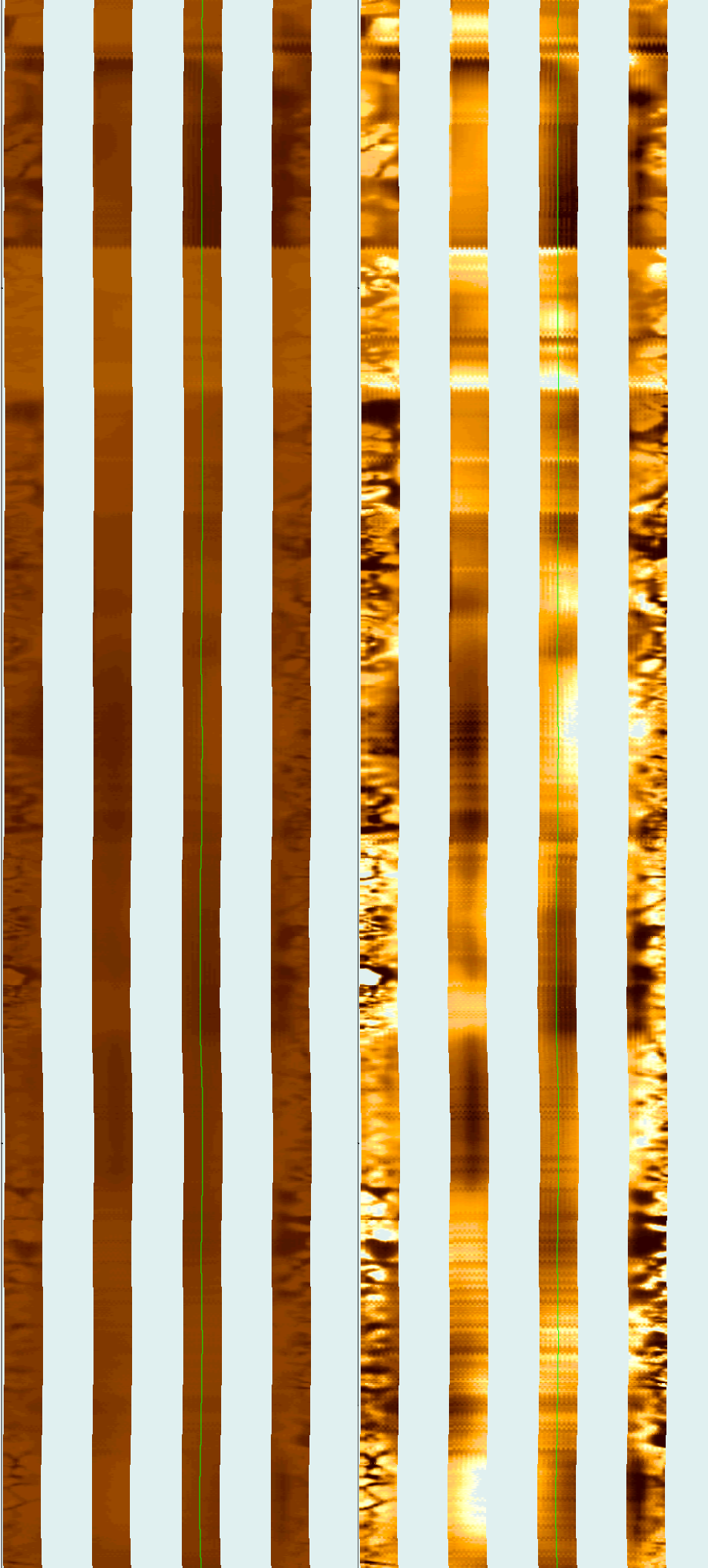
264

265

266

267

268



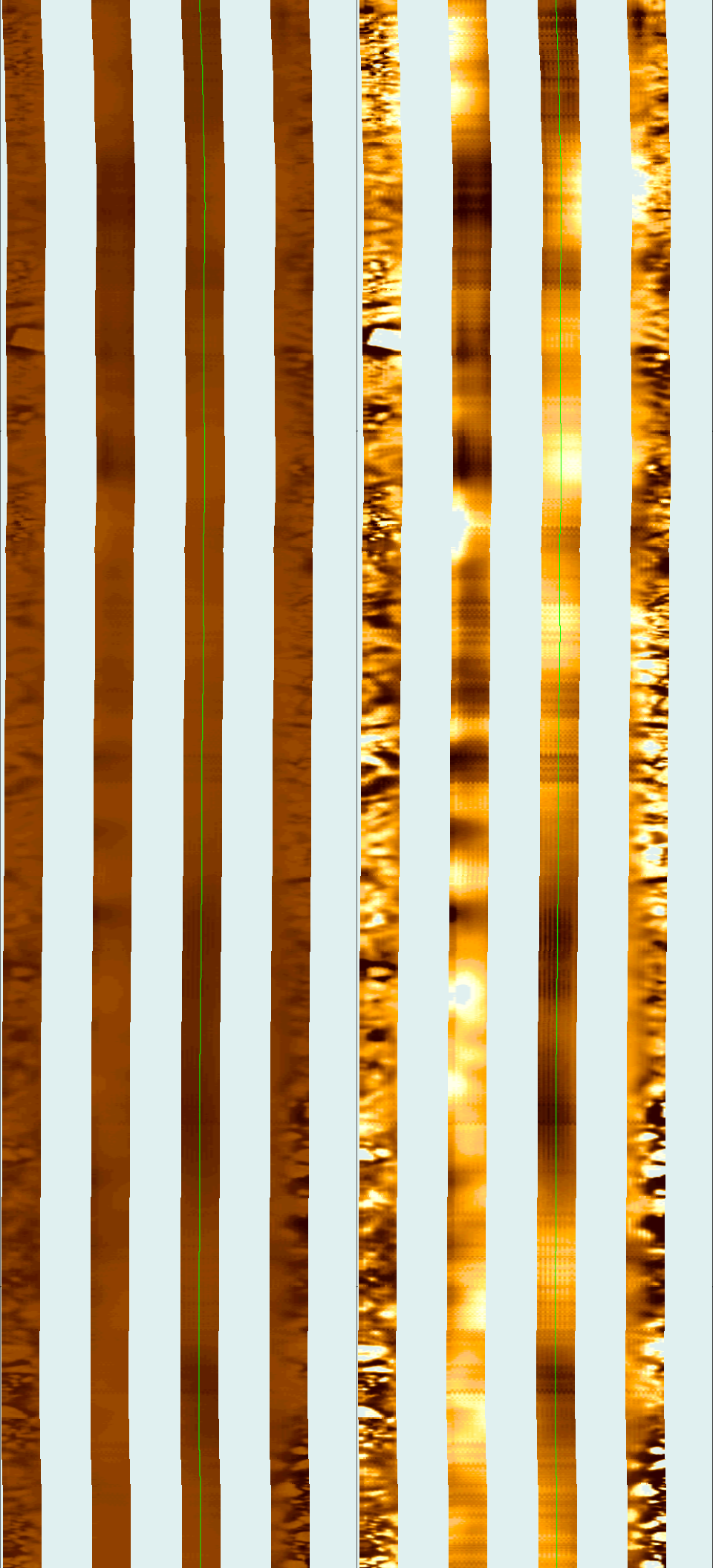
269

270

271

272

273



274

275

276

277

278

279



280

281

282

283

284

285

286

287

288

289

290



291

292

293

294

295



296

297

298

299

300

301



302

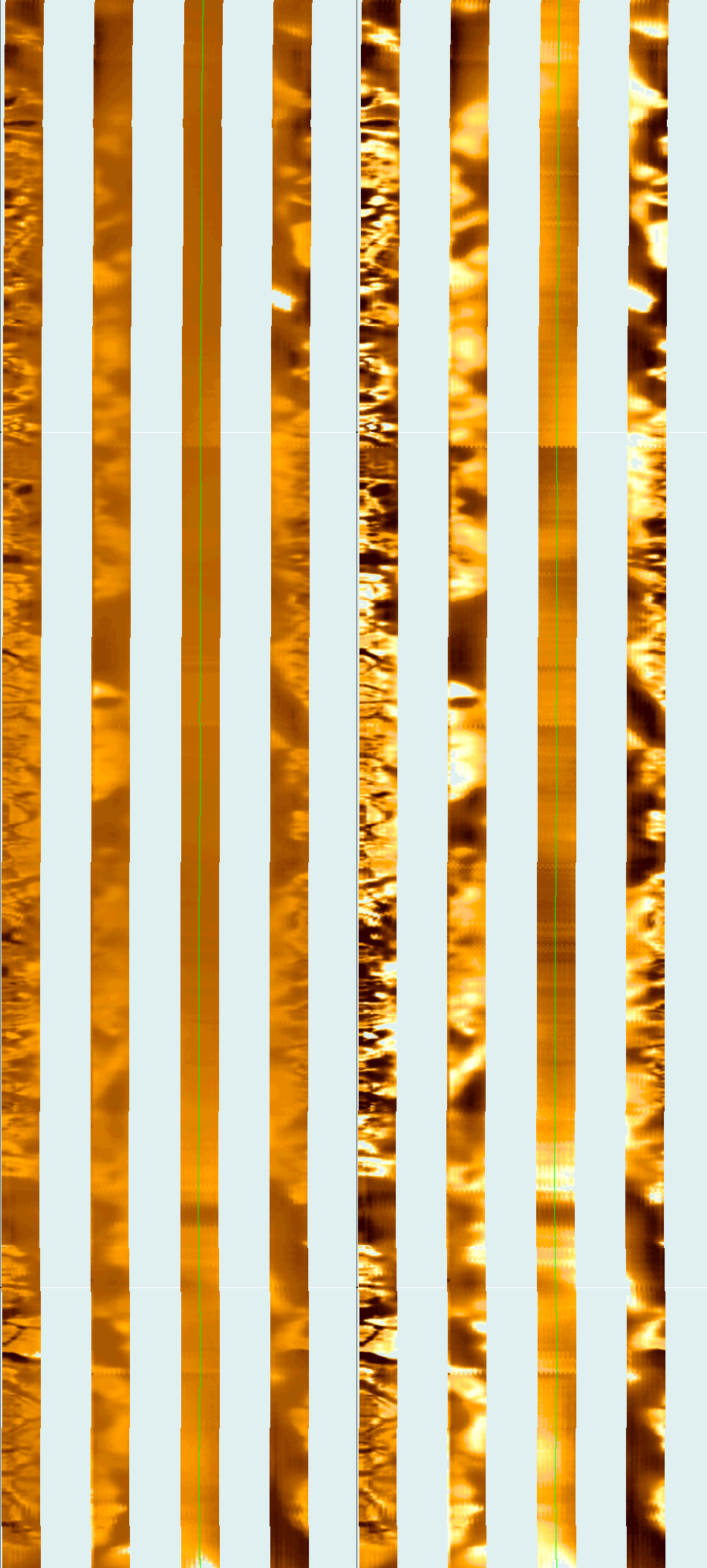
303

304

305

306

307





308

309

310

311

312



313

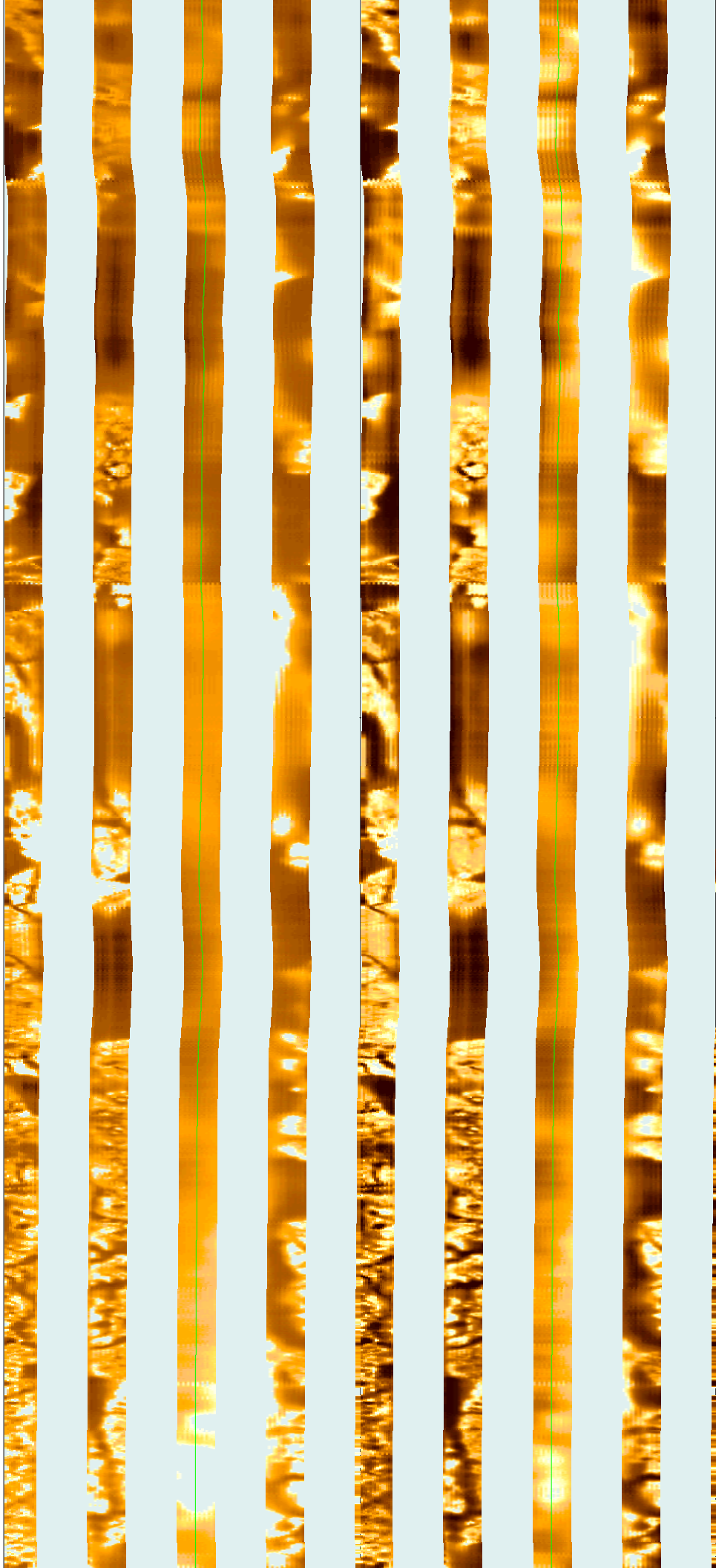
314

315

316

317

318



319

320

321

322

323



324

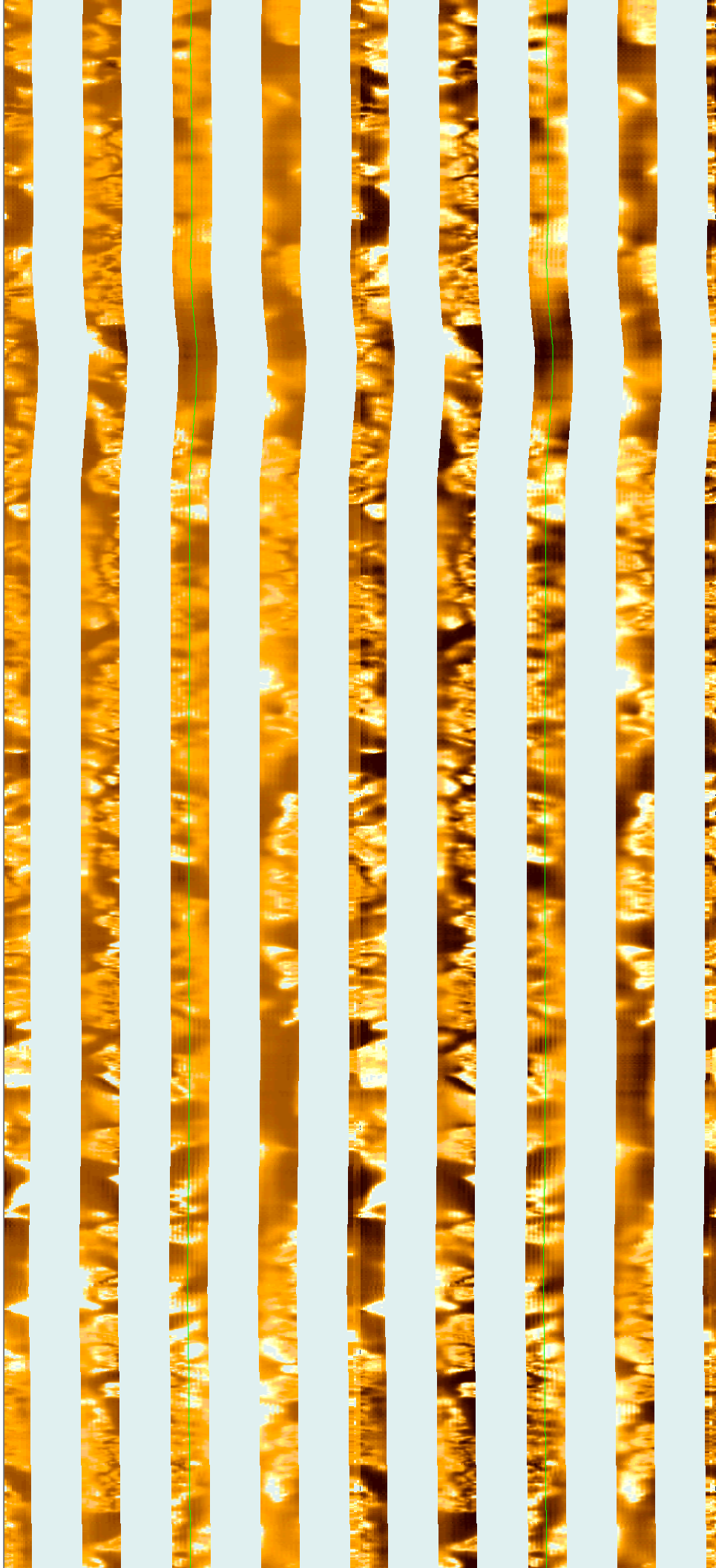
325

326

327

328

329





330

331

332

333

334

335

336

337

338

339

340



341

342

343

344

345

346

347

348

349

350

351

352

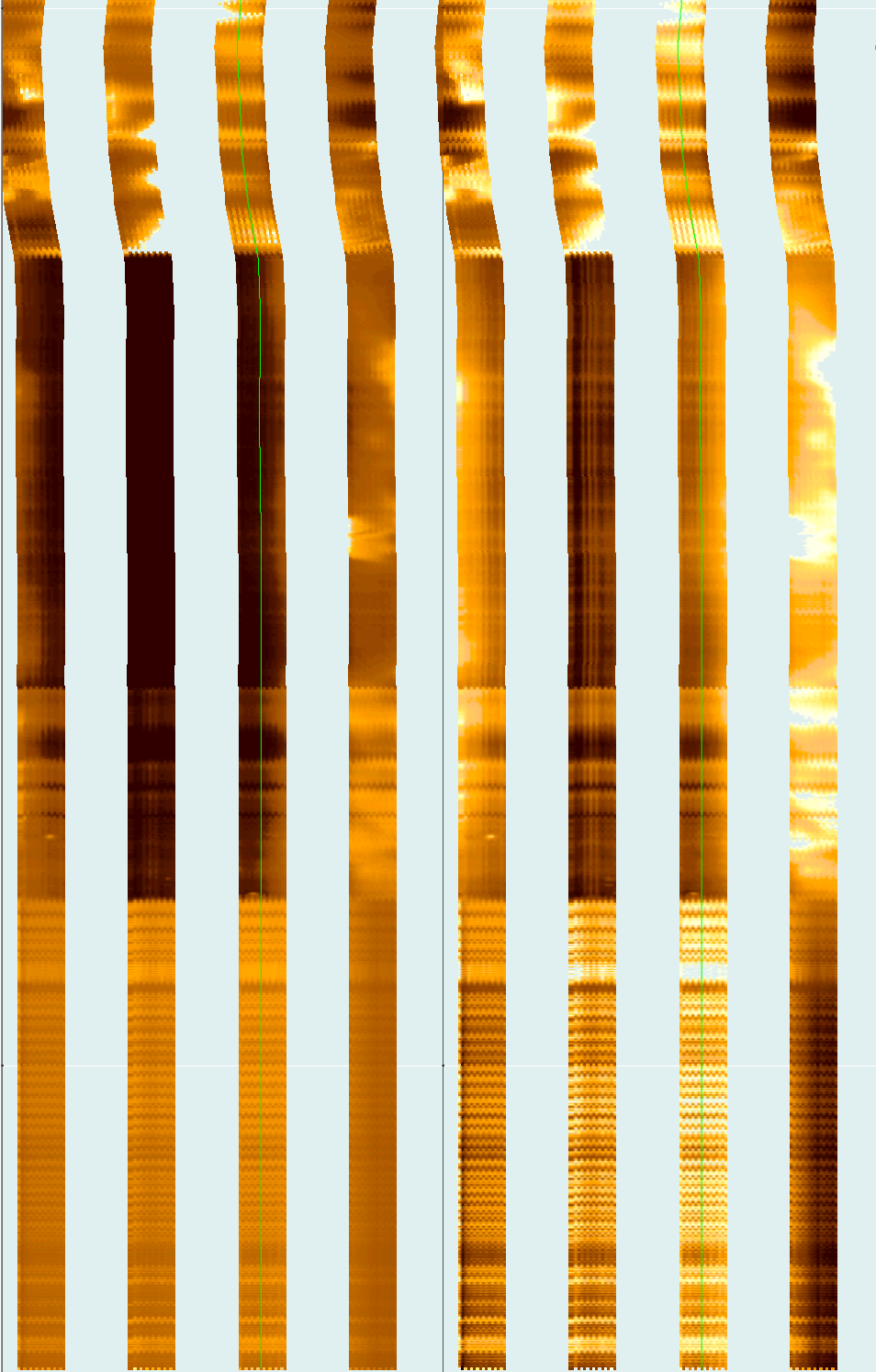
353

354

355

356

357



358

359

360  
MD  
1 : 20  
m

MESTB .032 FMS4 .STAT [C156227]  
Horizontal Scale: 1 : 9.111  
Orientation North

0 120 240 360

Resistive FMS4 Image Conductive



MESTB .032 FMS4 .DYNA [C156133]  
Horizontal Scale: 1 : 9.111  
Orientation North

0 120 240 360

Resistive FMS4 Image Conductive

