

DISCLAIMER

THE USE OF AND RELIANCE UPON THIS RECORDED-DATA BY THE HEREIN NAMED COMPANY (AND ANY OF ITS AFFILIATES, PARTNERS, REPRESENTATIVES, AGENTS, CONSULTANTS AND EMPLOYEES) IS SUBJECT TO THE TERMS AND CONDITIONS AGREED UPON BETWEEN SCHLUMBERGER AND THE COMPANY, INCLUDING: (a) RESTRICTIONS ON USE OF THE RECORDED-DATA; (b) DISCLAIMERS AND WAIVERS OF WARRANTIES AND REPRESENTATIONS REGARDING COMPANY'S USE OF AND RELIANCE UPON THE RECORDED-DATA; AND (c) CUSTOMER'S FULL AND SOLE RESPONSIBILITY FOR ANY INFERENCE DRAWN OR DECISION MADE IN CONNECTION WITH THE USE OF THIS RECORDED-DATA.

OTHER SERVICES1
 OS1: FMS/DSI
 OS2: TEMP
 OS3: HLDS/APS
 OS4:
 OS5:

OTHER SERVICES2
 OS1:
 OS2:
 OS3:
 OS4:
 OS5:

REMARKS: RUN NUMBER 1

REMARKS: RUN NUMBER 2

HGTC (HighTemp/High Pressure Gamma Ray Telemetry Cartridge) used for Temperature with LEH-QO head and MTEM sensor.
 Log presented in meters below rig floor. Sea floor at 1652 mbrf.
 Wireline heave compensator used on all descents.
 Sea water used as mud in hole.
 Log TD at 1888 mbrf on first descent, 1850 on other descents there after.
 Maximum temperature recorded from MTEM on this descent.
 Toolstring-HGTC/LEHQO
 Original log files are log3.dlis and log4.dlis, they are replaced with play50.dlis and play 51.dlis. The original files needed a depth shift of 3 m.

RUN 1

SERVICE ORDER #:
 PROGRAM VERSION: 9C1-303
 FLUID LEVEL: 0 m

LOGGED INTERVAL	START	STOP

RUN 2

SERVICE ORDER #:
 PROGRAM VERSION:
 FLUID LEVEL:

LOGGED INTERVAL	START	STOP

EQUIPMENT DESCRIPTION

RUN 1

SURFACE EQUIPMENT

WITM (DTS)-A

RUN 2

DOWNHOLE EQUIPMENT

LEH-MT
LEH-MT 1



4.21

HTGC-B
UDFH-KL 1062
STGC0-A 8038
STGC1-BH 8038
MTEM 1

Mud Tempe — 3.25

3.25

Gamma Ray — 2.22

CTEM — 1.36

TelStatus
HV DF
Tension ACCZ — 0.00

TOOL ZERO

MAXIMUM STRING DIAMETER 3.75 IN
MEASUREMENTS RELATIVE TO TOOL ZERO
ALL LENGTHS IN METERS

Input DLIS Files

DEFAULT	HTGC-B.005	FN:6	PRODUCER	25-Dec-2000 23:26	1850.0 M	1795.7 M
---------	------------	------	----------	-------------------	----------	----------

Output DLIS Files

DEFAULT	HTGC-B.051	FN:86	PRODUCER	27-Dec-2000 18:32	1846.9 M	1792.7 M
LAMONT	HTGC-B.051	FN:87	PRODUCER	27-Dec-2000 18:32	1846.9 M	1792.7 M

OP System Version: 9C1-303
MCM

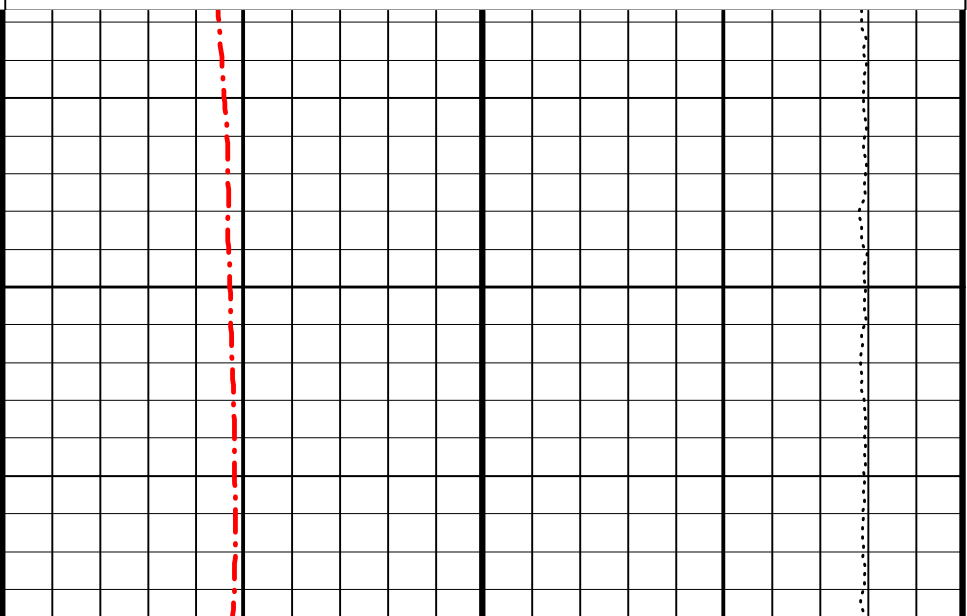
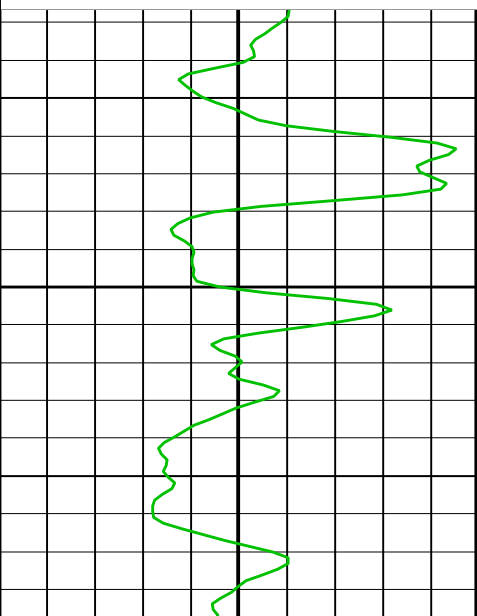
HTGC-B OP91-kp2

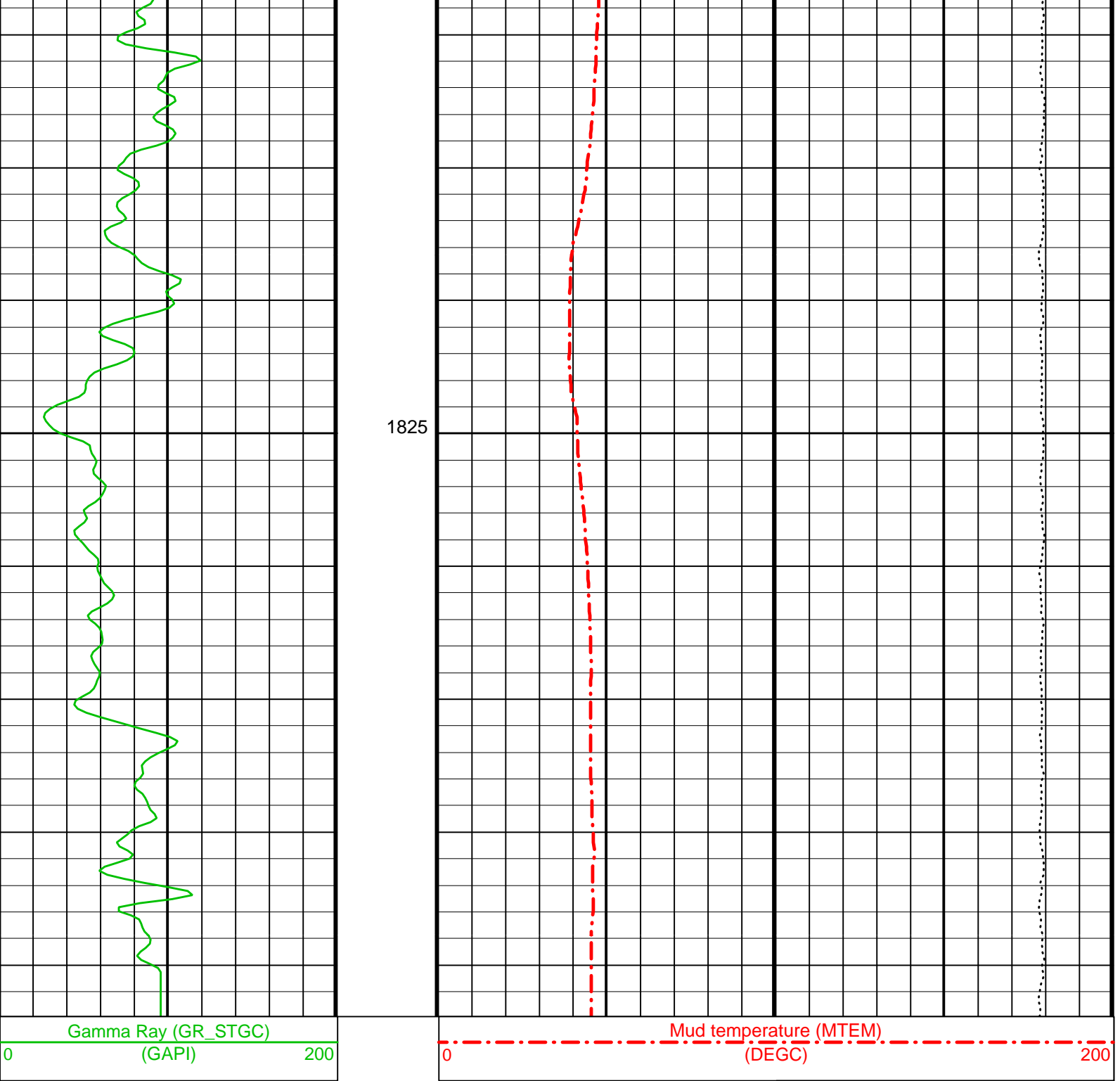
REPEAT SECTION

Tension (TENS)
(LBF) 10000 0

Gamma Ray (GR_STGC)
(GAPI) 0 200

Mud temperature (MTEM)
(DEGC) 0 200





REPEAT SECTION

Parameters

DLIS Name	Description	Value
DO	Depth Offset for Logical Unit 1	-3.0 M
PP	Playback Processing	RECOMPUTE

Format: CORRELATION Vertical Scale: 1:200 Graphics File Created: 27-Dec-2000 18:32

OP System Version: 9C1-303
MCM

HTGC-B OP91-kp2

Input DLIS Files

DEFAULT HTGC-B.005 FN:6 PRODUCER 25-Dec-2000 23:26 1850.0 M 1795.7 M

Output DLIS Files

DEFAULT	HTGC-B.051	FN:86	PRODUCER	27-Dec-2000 18:32	
LAMONT	HTGC-B.051	FN:87	PRODUCER	27-Dec-2000 18:32	

Input DLIS Files

DEFAULT	HTGC-B.004	FN:4	PRODUCER	25-Dec-2000 22:38	1893.0 M	1684.6 M
---------	------------	------	----------	-------------------	----------	----------

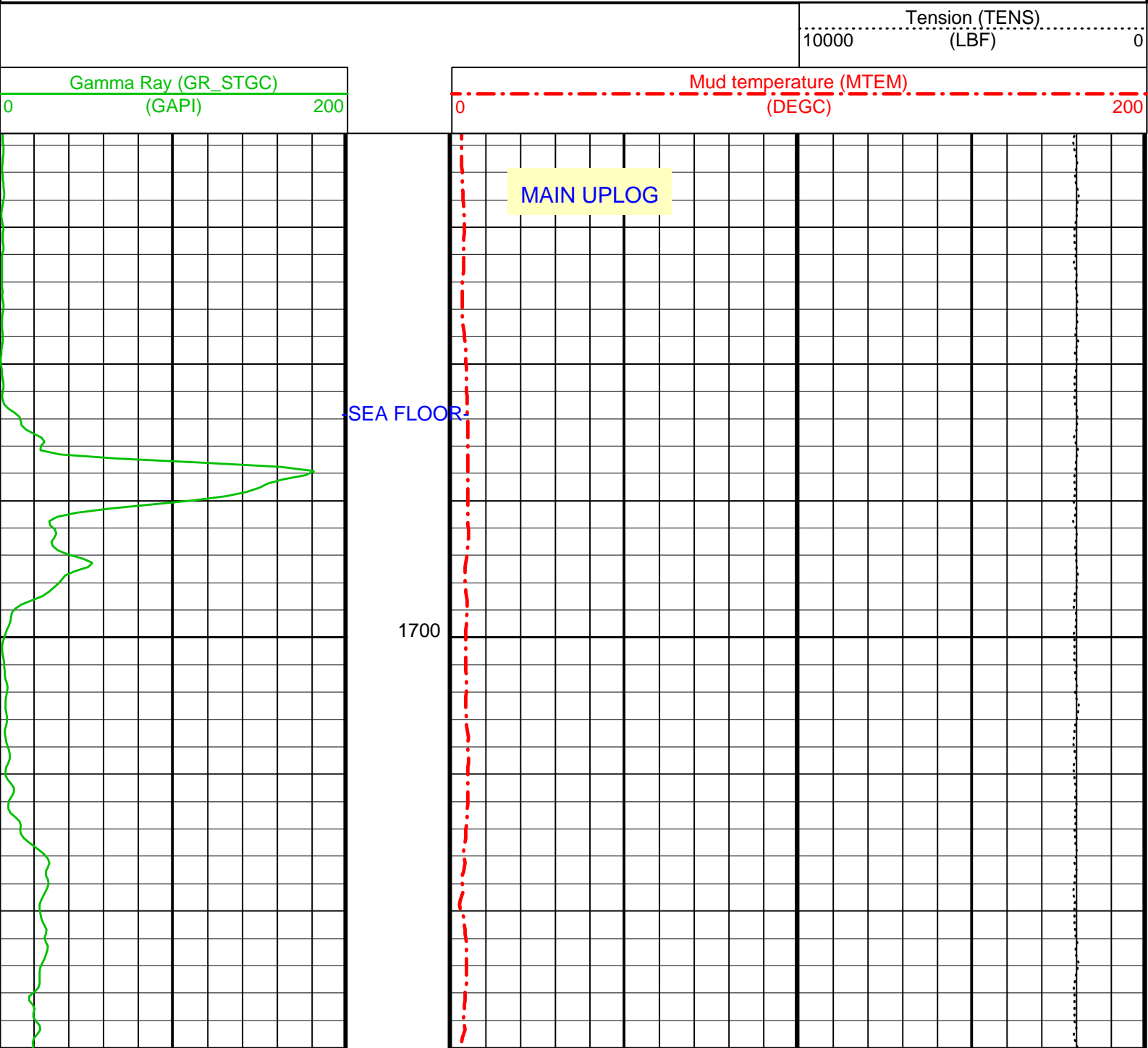
Output DLIS Files

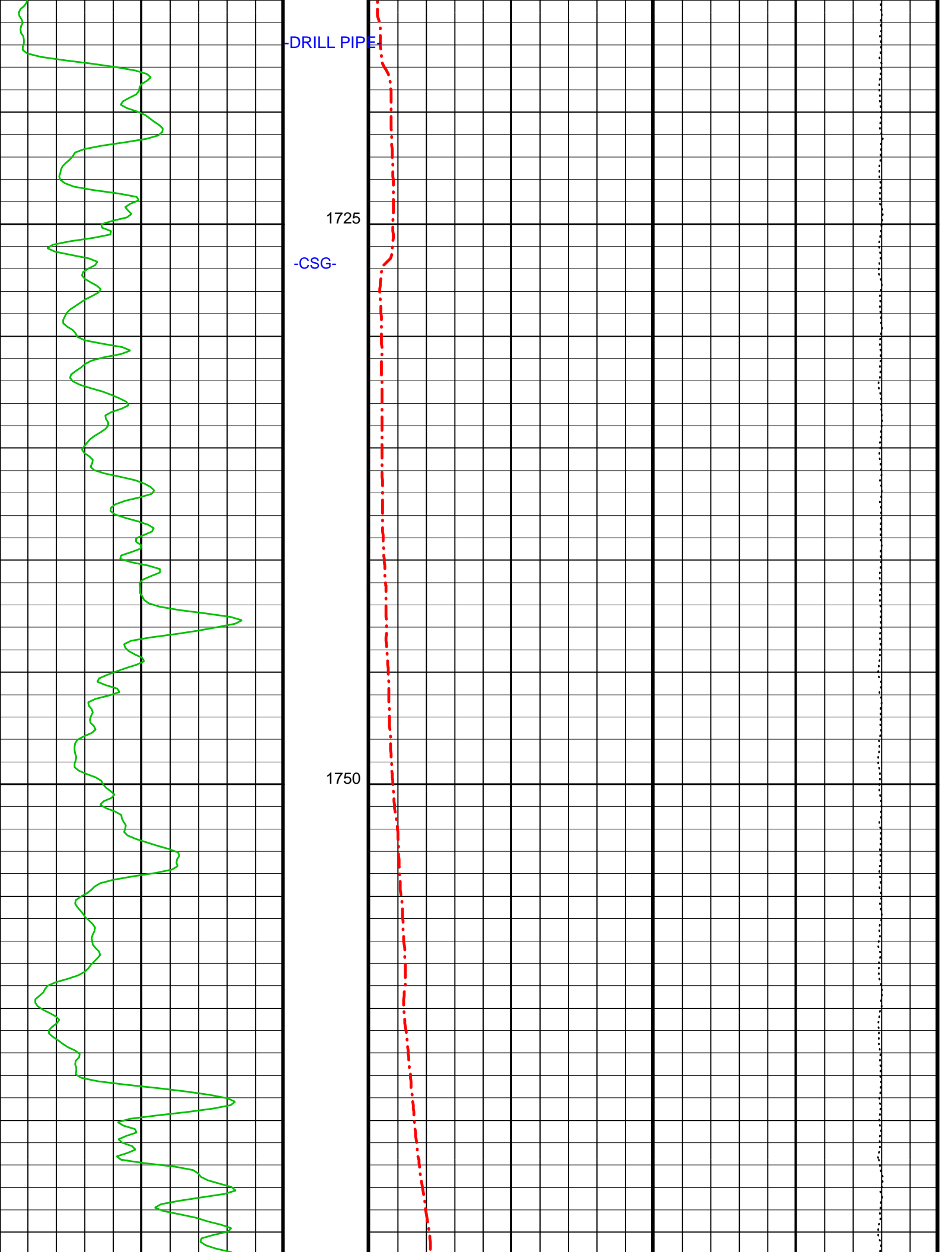
DEFAULT	HTGC-B.050	FN:84	PRODUCER	27-Dec-2000 18:29	1889.9 M	1681.6 M
LAMONT	HTGC-B.050	FN:85	PRODUCER	27-Dec-2000 18:29	1889.9 M	1681.6 M

OP System Version: 9C1-303

MCM

HTGC-B OP91-kp2



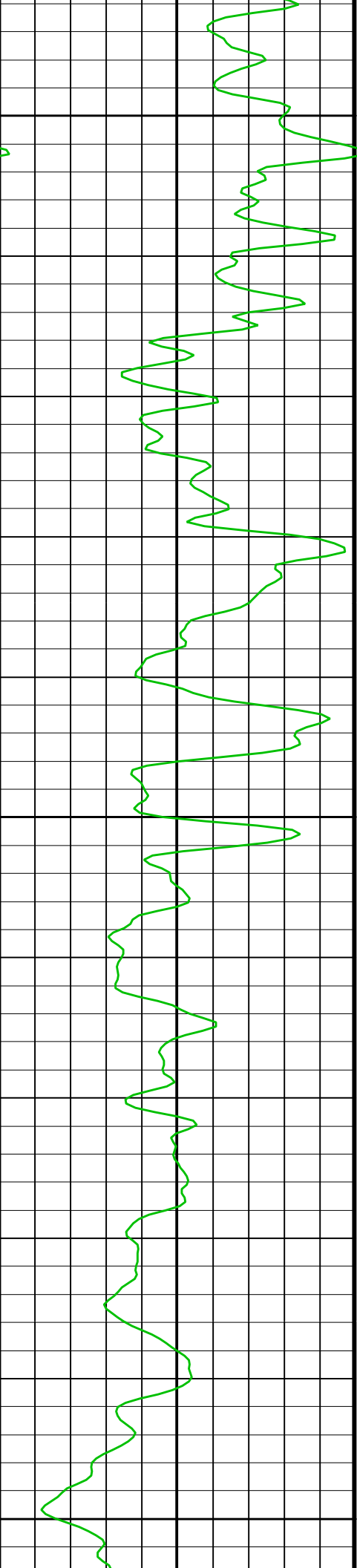


DRILL PIPE

1725

-CSG-

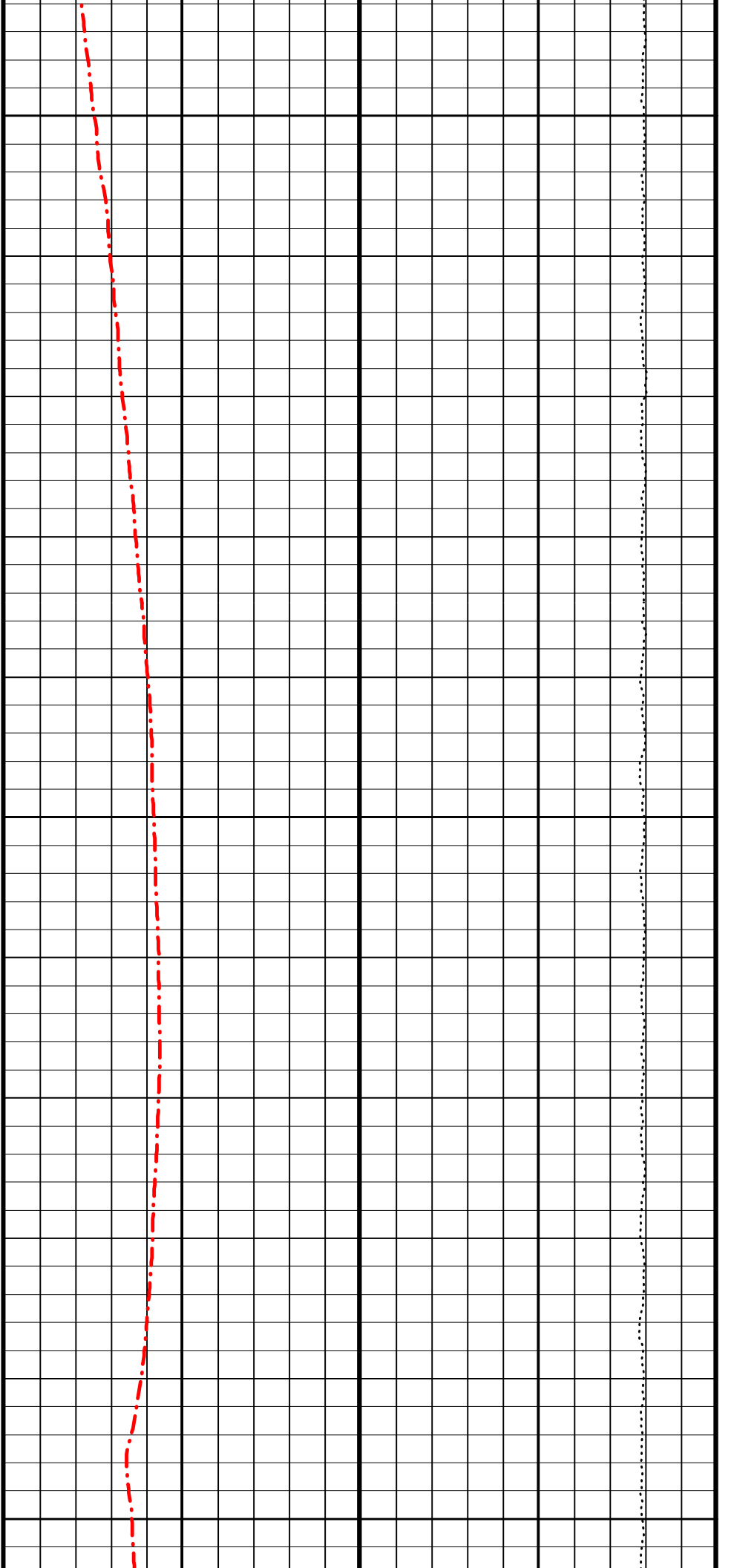
1750

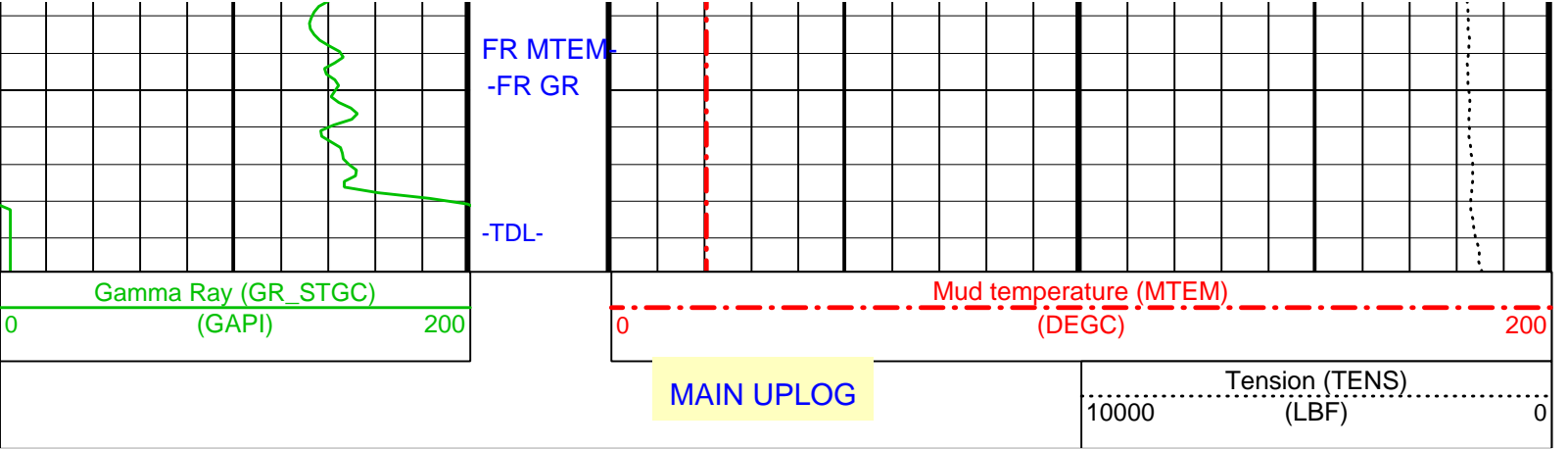


1775

1800

1825





Parameters		
DLIS Name	Description	Value
DO	Depth Offset for Logical Unit 1	-3.0 M
PP	Playback Processing	RECOMPUTE

Format: CORRELATION Vertical Scale: 1:200 Graphics File Created: 27-Dec-2000 18:29

OP System Version: 9C1-303
MCM

HTGC-B OP91-kp2

Input DLIS Files						
DEFAULT	HTGC-B.004	FN:4	PRODUCER	25-Dec-2000 22:38	1893.0 M	1684.6 M
Output DLIS Files						
DEFAULT	HTGC-B.050	FN:84	PRODUCER	27-Dec-2000 18:29		
LAMONT	HTGC-B.050	FN:85	PRODUCER	27-Dec-2000 18:29		

COMPANY:	Lamont Doherty	BOTTOM LOG INTERVAL	1885 m
		SCHLUMBERGER DEPTH	1888 m
WELL:	ODP Leg 193, Site 1189B (PCM-3A)	DEPTH DRILLER	1899 m
FIELD:		KELLY BUSHING	11.3 m
COUNTY:	Offshore	DRILL FLOOR	11 m
STATE:	Bismarck Sea	GROUND LEVEL	-1693 m

Schlumberger Mud Temperature
Gamma Ray