

COMPANY: Lamont Doherty

WELL: ODP Leg 194, Site 1194B

FIELD: Marion Plateau

Country: Australia Ocean: Pacific Ocean

Schlumberger Sonic Log

Country: Australia  
 Field: Marion Plateau  
 Location: Rig- Joides Resolution  
 Well: ODP Leg 194, Site 1194B  
 Company: Lamont Doherty

LOCATION		Rig- Joides Resolution	Elev.: K.B. 11.3 m G.L. -384.8 m D.F. 11 m
Permanent Datum:	GROUND LEVEL	DES	Elev.: 0 m
Log Measured From:		DES	11.3 m above Perm. Datum
Drilling Measured From:		DES	
API Serial No.	SECTION	TOWNSHIP	RANGE

Logging Date	1-25-01
Run Number	1
Depth Driller	812.17 m
Schlumberger Depth	811 m
Bottom Log Interval	810 m
Top Log Interval	455 m
Casing Driller Size @ Depth	0.000 in @ 463.73 m
Casing Schlumberger	461.5 m @
Bit Size	9.875 in
Type Fluid In Hole	
Density	1.1 g/cm3
Fluid Loss	PH
Source Of Sample	
RM @ Measured Temperature	0.290 ohm.m @ 21 degC
RMF @ Measured Temperature	0.235 ohm.m @
RMC @ Measured Temperature	@
Source RMF	RMC
RM @ MRT	0.380 @ 17 @ 17 @
Maximum Recorded Temperatures	17 degC
Circulation Stopped	1/25/01 0200
Logger On Bottom	1/25/01 See Log
Unit Number	99 Houston
Recorded By	Steve Kittredge
Witnessed By	Heike Delius, Gregor Eberli

Logging Date			
Run Number			
Depth Driller			
Schlumberger Depth			
Bottom Log Interval			
Top Log Interval			
Casing Driller Size @ Depth			
Casing Schlumberger			
Bit Size			
Type Fluid In Hole			
Density			
Fluid Loss			
Source Of Sample			
RM @ Measured Temperature			
RMF @ Measured Temperature			
RMC @ Measured Temperature			
Source RMF			
RM @ MRT			
Maximum Recorded Temperatures			
Circulation Stopped			
Logger On Bottom			
Unit Number			
Recorded By			
Witnessed By			

Logging Date		Run 1	Run 2	Run
Run Number				
Depth Driller				
Schlumberger Depth				
Bottom Log Interval				
Top Log Interval				
Casing Driller Size @ Depth				
Casing Schlumberger				
Bit Size				
Type Fluid In Hole				
Density				
Fluid Loss				
Source Of Sample				
RM @ Measured Temperature				
RMF @ Measured Temperature				
RMC @ Measured Temperature				
Source RMF				
RM @ MRT				
Maximum Recorded Temperatures				
Circulation Stopped				
Logger On Bottom				
Unit Number				
Recorded By				
Witnessed By				

**DISCLAIMER**

THE USE OF AND RELIANCE UPON THIS RECORDED-DATA BY THE HEREIN NAMED COMPANY (AND ANY OF ITS AFFILIATES, PARTNERS, REPRESENTATIVES, AGENTS, CONSULTANTS AND EMPLOYEES) IS SUBJECT TO THE TERMS AND CONDITIONS AGREED UPON BETWEEN SCHLUMBERGER AND THE COMPANY, INCLUDING: (a) RESTRICTIONS ON USE OF THE RECORDED-DATA; (b) DISCLAIMERS AND WAIVERS OF WARRANTIES AND REPRESENTATIONS REGARDING COMPANY'S USE OF AND RELIANCE UPON THE RECORDED-DATA; AND (c) CUSTOMER'S FULL AND SOLE RESPONSIBILITY FOR ANY INFERENCE DRAWN OR DECISION MADE IN CONNECTION WITH THE USE OF THIS RECORDED-DATA.





OTHER SERVICES1 OS1: DITE/HLDS/APS/HNGS OS2: WSTA OS3: OS4: OS5:	OTHER SERVICES2 OS1: OS2: OS3: OS4: OS5:
---	---

REMARKS: RUN NUMBER 1	REMARKS: RUN NUMBER 2
Hole Cored With RCB.	
WHC used on all runs.	
Seas calm.	
Log Measured in Meters Below Rig Floor (MBRF).	
TD Driller- 812.17 MBRF.	
Sea Floor Driller- 384.8 MBRF.	
TD Logger-811 MBRF.	
Sea Floor Logger- 385 MBRF.	
Drill Pipe Logger- 461.5 MBRF.	
Drill Pipe Driller- 464 MBRF.	
Hole problems from 610-640 MBRF.	
Caliper closed from 641-625 MBRF due to over pull.	
DSI failed on Pass #1.	
LSS run on Pass #2.	

RUN 1			RUN 2		
SERVICE ORDER #:			SERVICE ORDER #:		
PROGRAM VERSION:		9C1-303	PROGRAM VERSION:		
FLUID LEVEL:		0 m	FLUID LEVEL:		
LOGGED INTERVAL	START	STOP	LOGGED INTERVAL	START	STOP

**EQUIPMENT DESCRIPTION**

RUN 1		RUN 2	
<b>SURFACE EQUIPMENT</b>			
GSR-U			
STM-C			
WITM (CTS)-A			

<b>DOWNHOLE EQUIPMENT</b>			
LEH-QT		23.18	
LEH-QT			
TCC-BF		22.29	
ECH-KC	TelStatus 	21.37	
TCC-BF			
AH-CMEAY		21.37	

AH-CMEAY  
AH-CMEAY 765

21.57

SDT-C  
SDC-CB 261  
ECH-KR  
SLS-ZA 611

20.08

U-F VDL  
L-F U-N  
L-N

15.33  
15.02  
14.72

AH-CMEAY  
AH-CMEAY 764

11.60

NGT-C  
NGD-A 1720  
NGH-B 1721  
NGC-C 1731  
NGCH-A 1733

Detector

9.92

10.30

MEST-B  
MEAH-B 702  
MEAC-A 804  
MEPH-A 702  
GPIC-A 719  
MEPC-AB 807  
MEDS-B 724

7.68

MEDR MEAC  
MEPC MEDS-B  
HV DF  
Tension GPIT

0.46  
0.00

TOOL ZERO

MAXIMUM STRING DIAMETER 3.63 IN  
MEASUREMENTS RELATIVE TO TOOL ZERO  
ALL LENGTHS IN METERS

## Output DLIS Files

DEFAULT	MESTB .017	FN:30 PRODUCER	25-Jan-2001 18:08	810.8 M	455.4 M
FMS_CUST	MESTB .017	FN:31 PRODUCER	25-Jan-2001 18:08	810.8 M	455.4 M

## OP System Version: 9C1-303

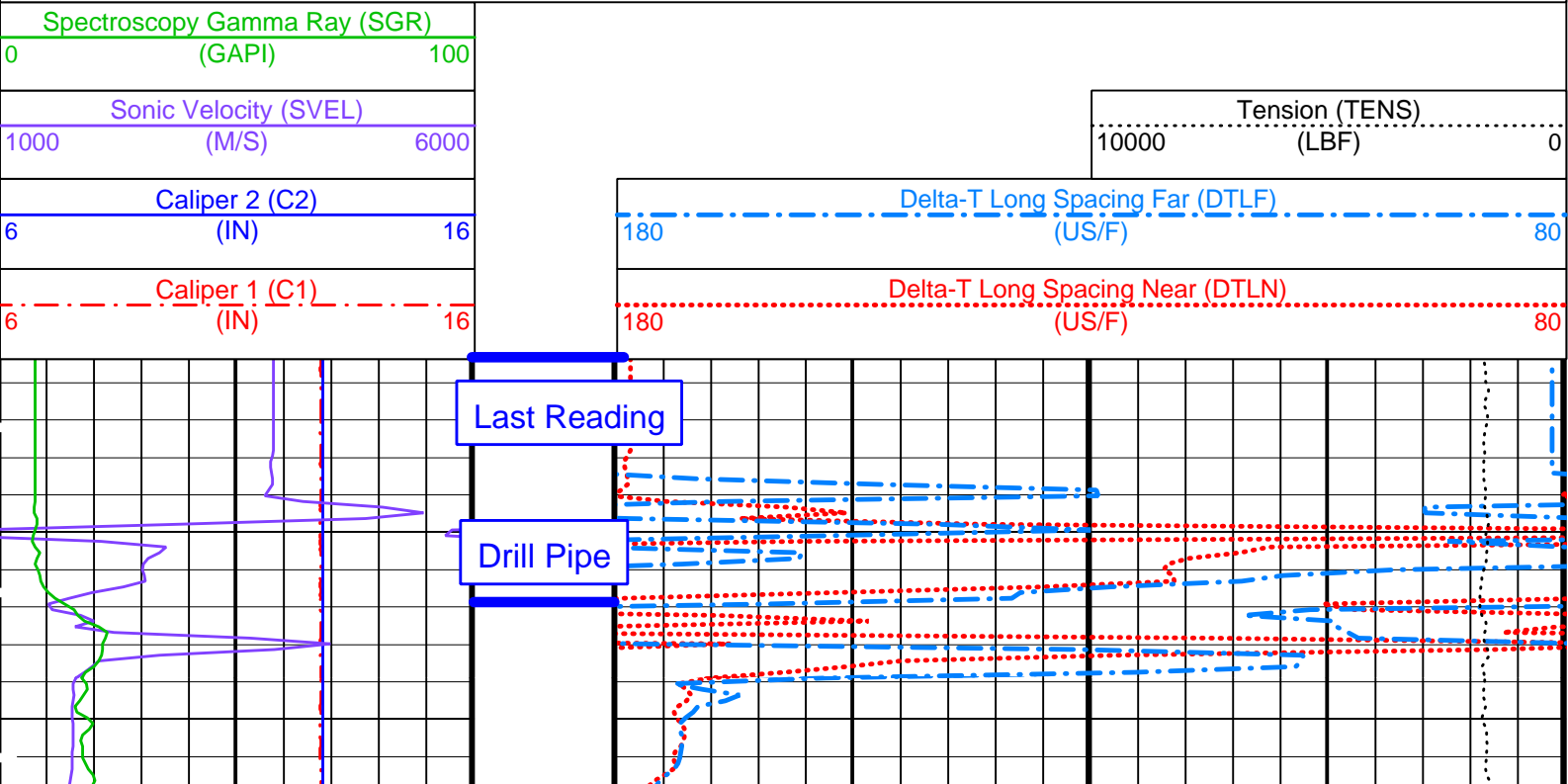
MCM

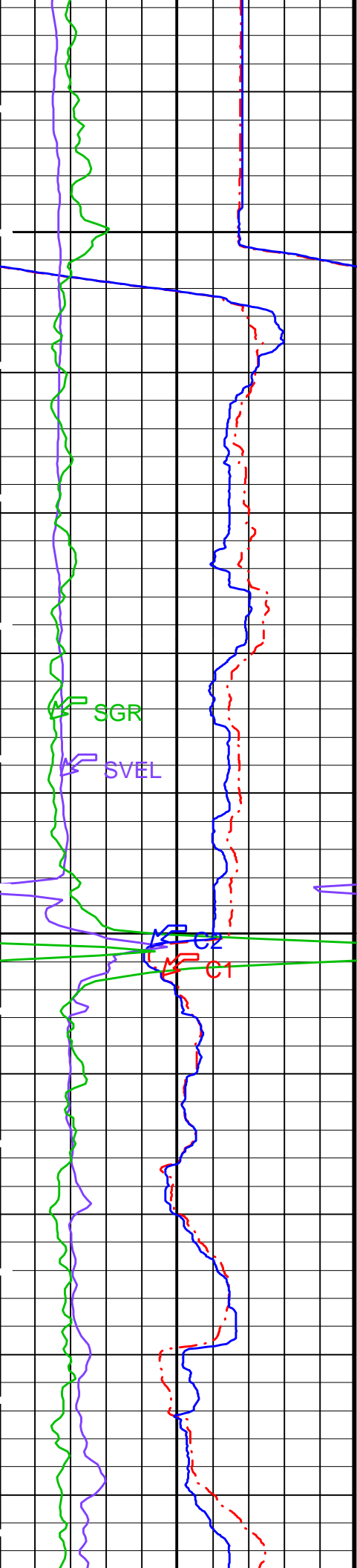
MAIN UP LOG

MEST-B	OP91-kp2	NGT-C	OP91-kp2
SDT-C	OP91-kp2	TCC-BF	OP91-kp2

### PIP SUMMARY

Time Mark Every 60 S



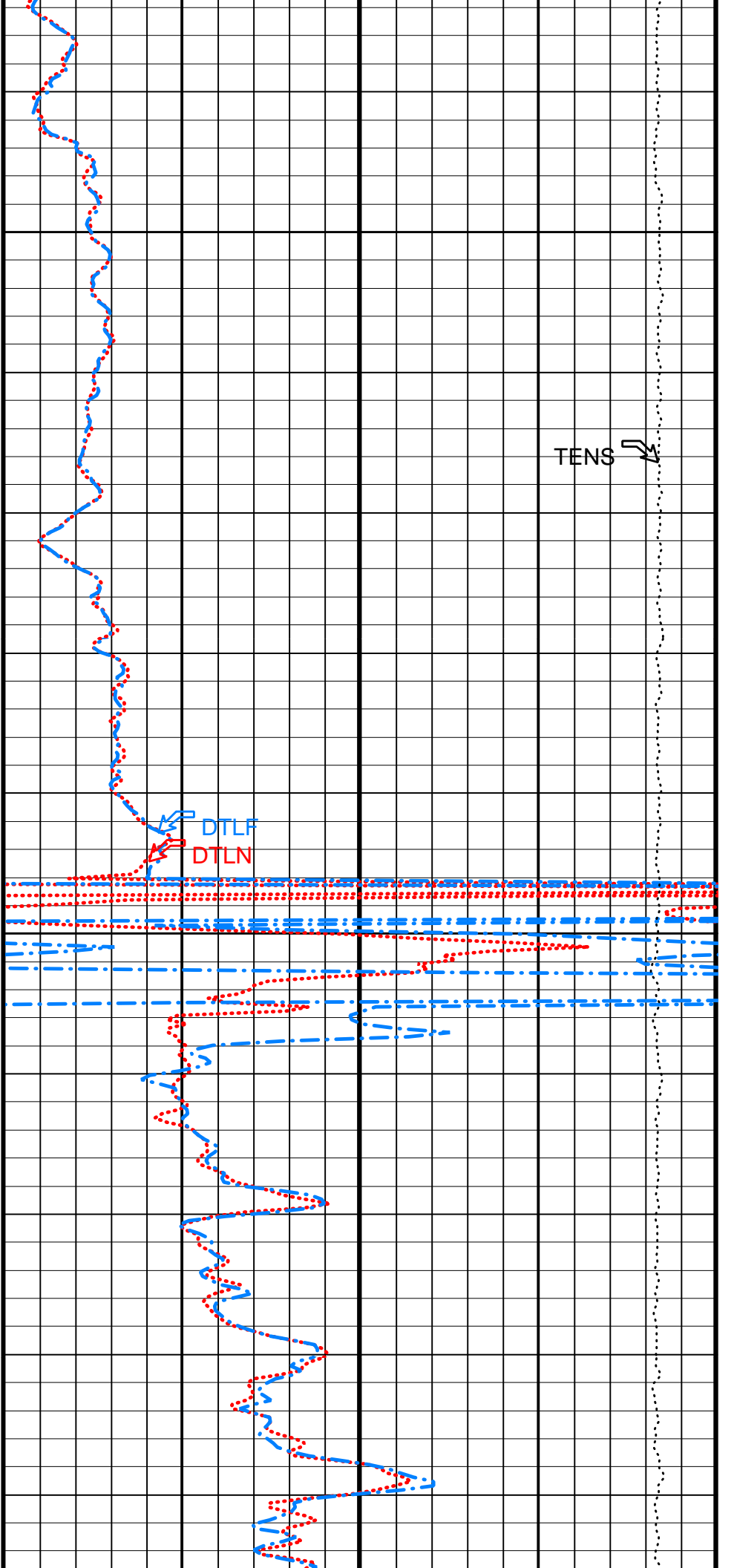


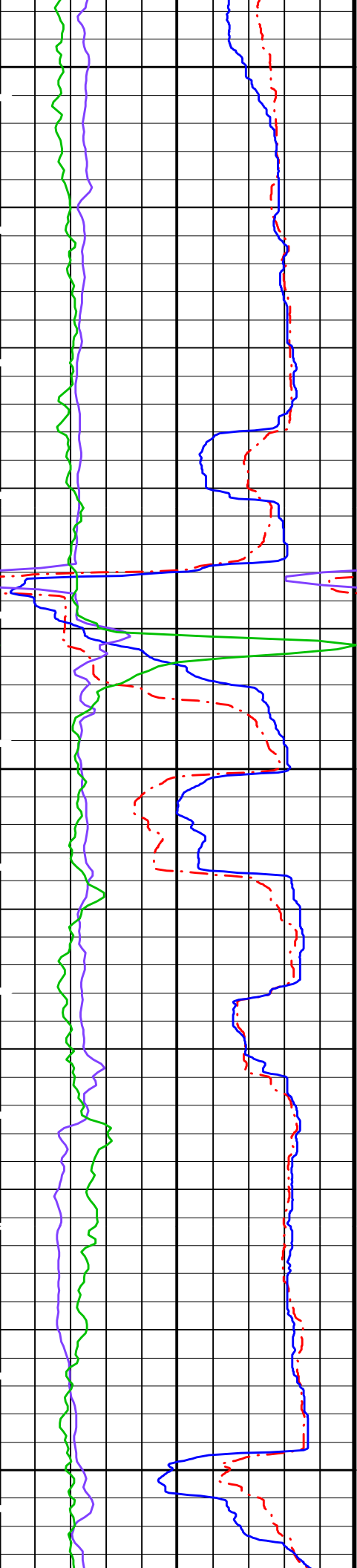
475

TENS ↘

DTLF  
DTLN

500

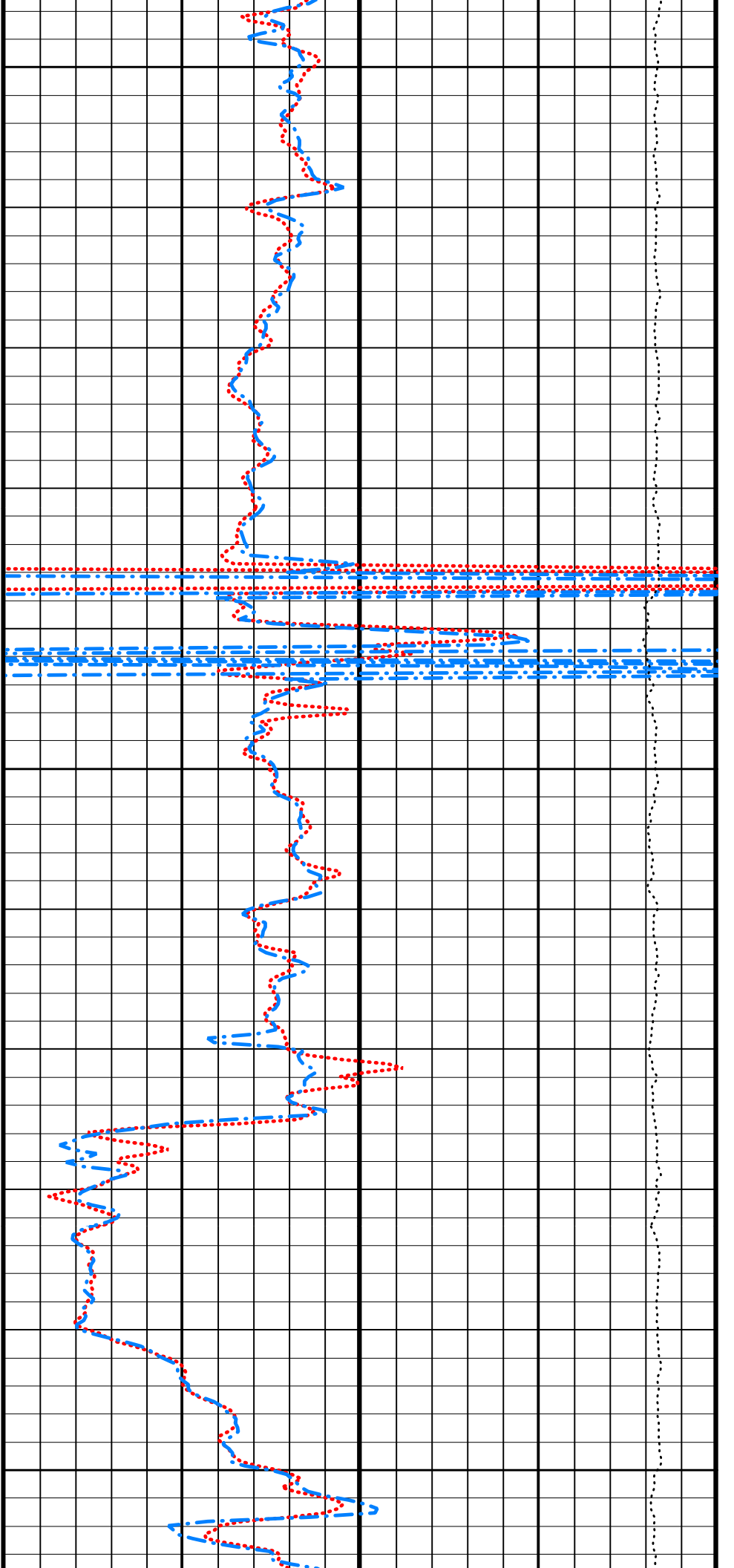


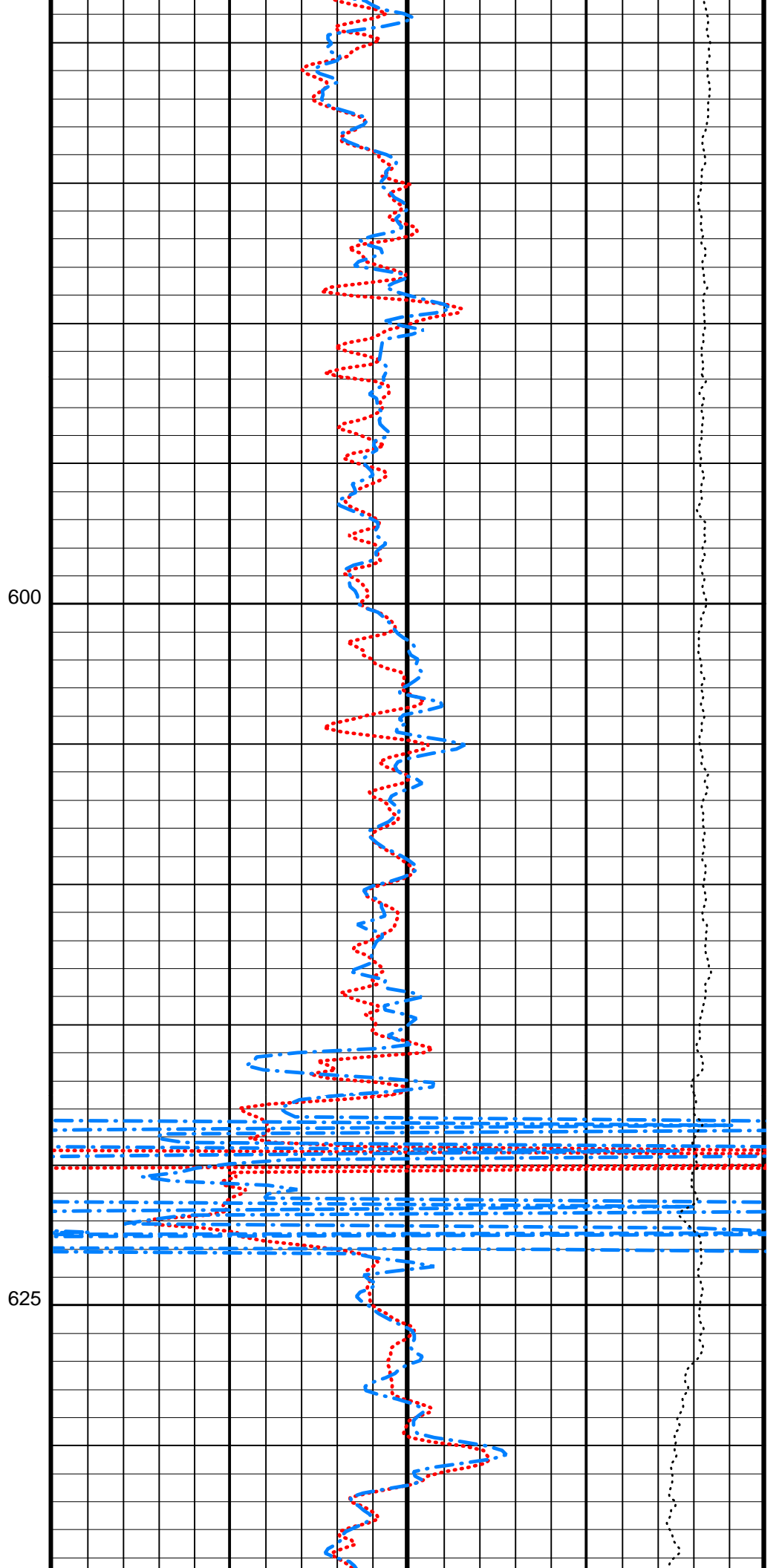
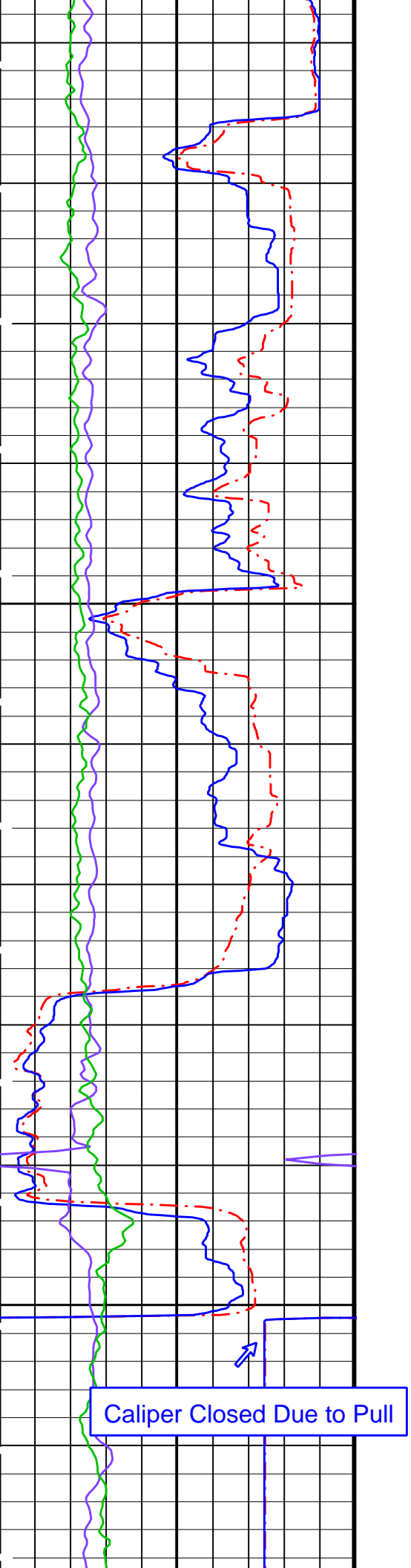


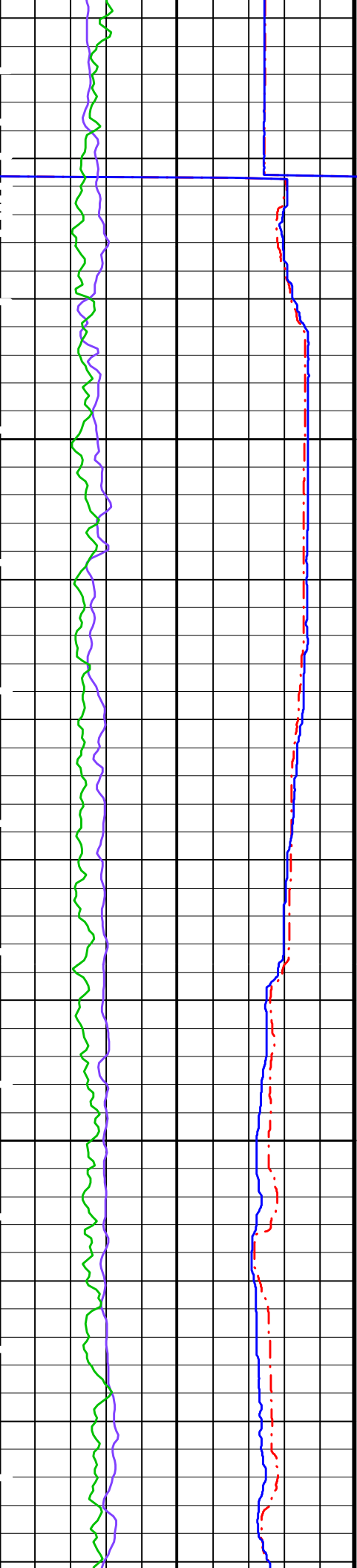
525

550

575

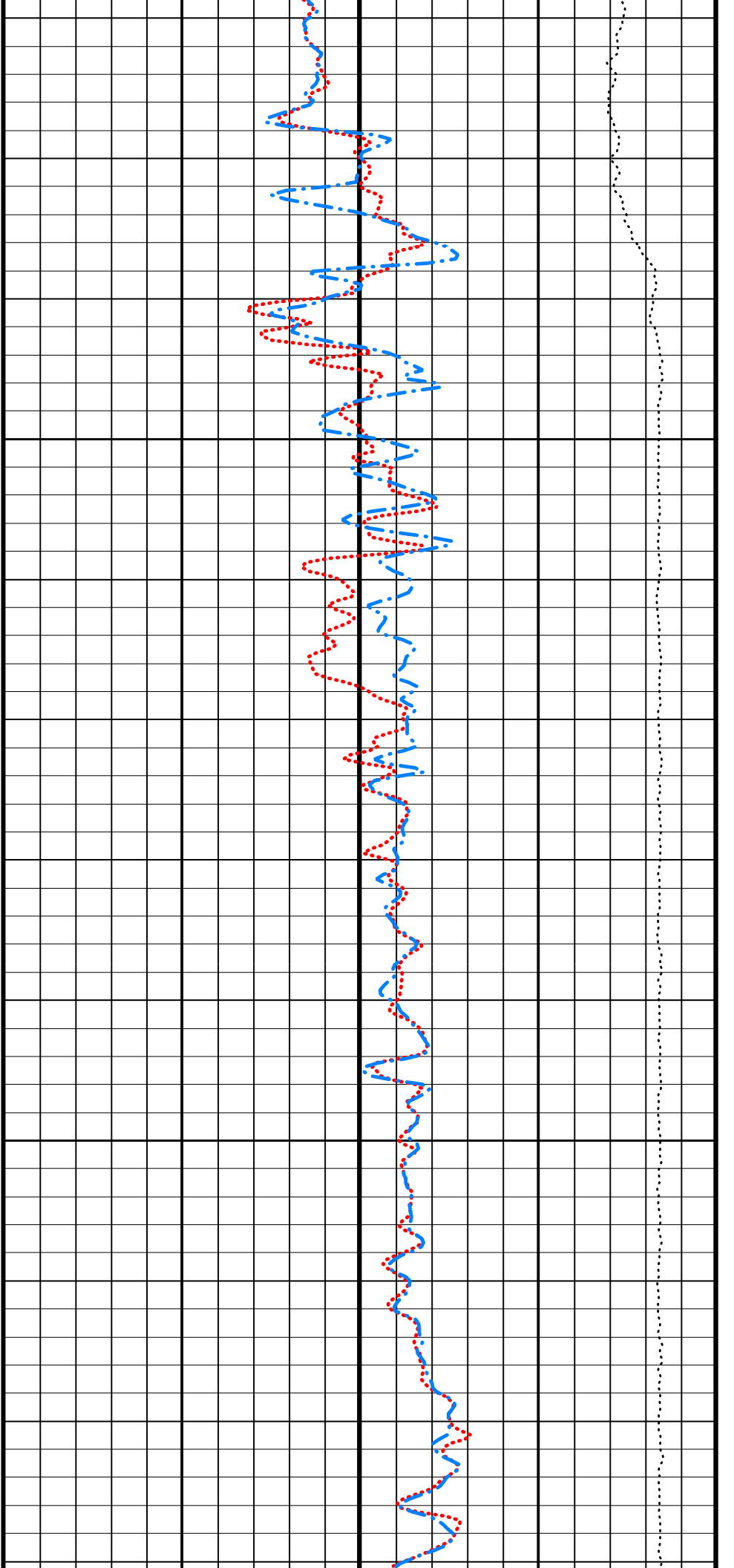




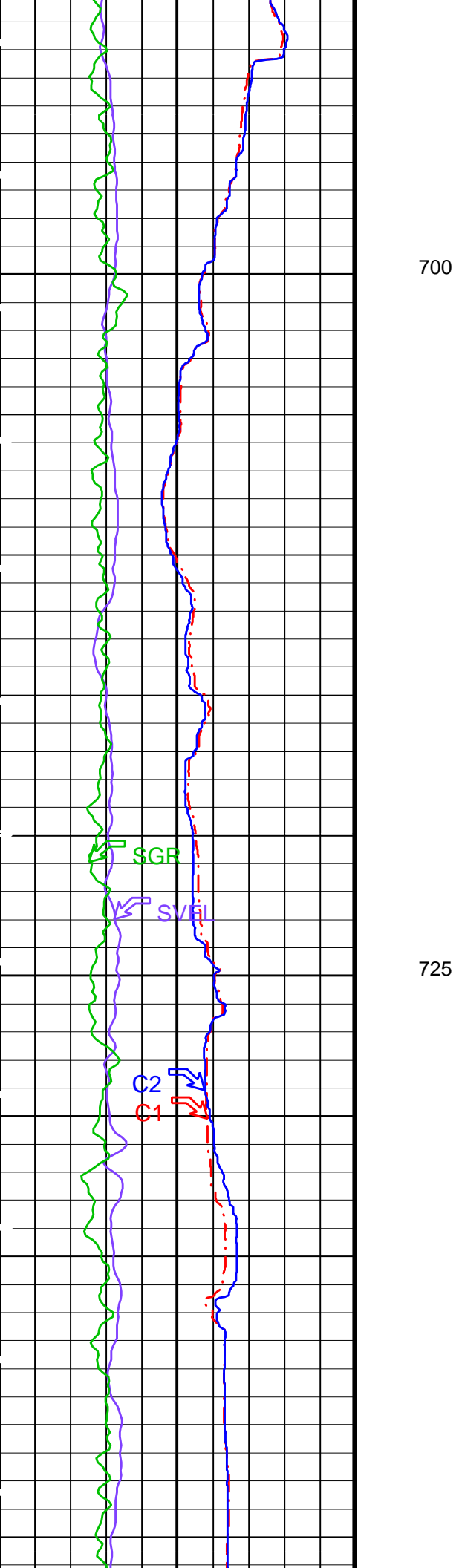


650

675

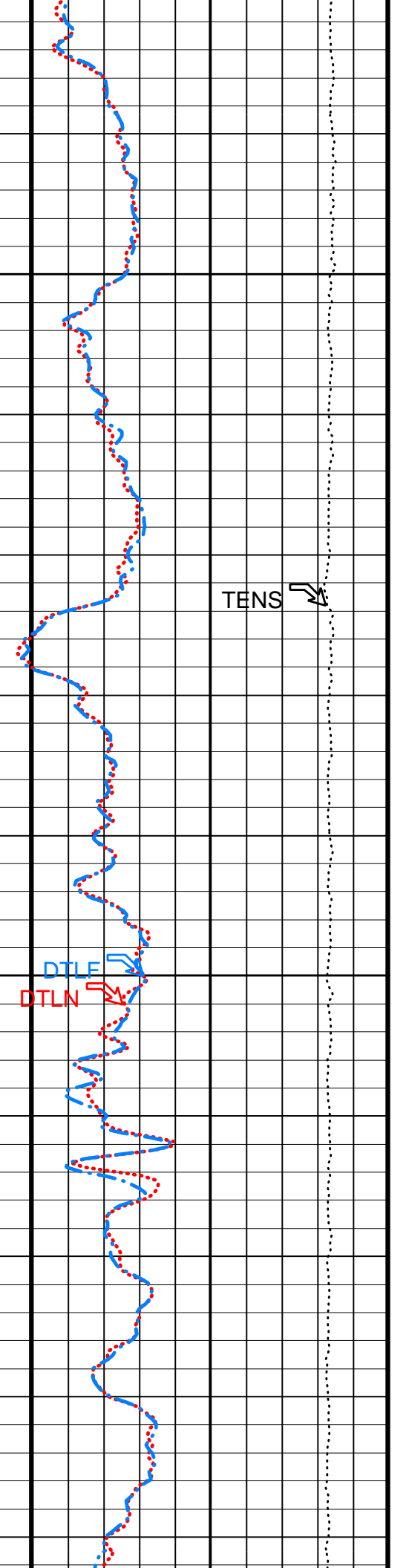






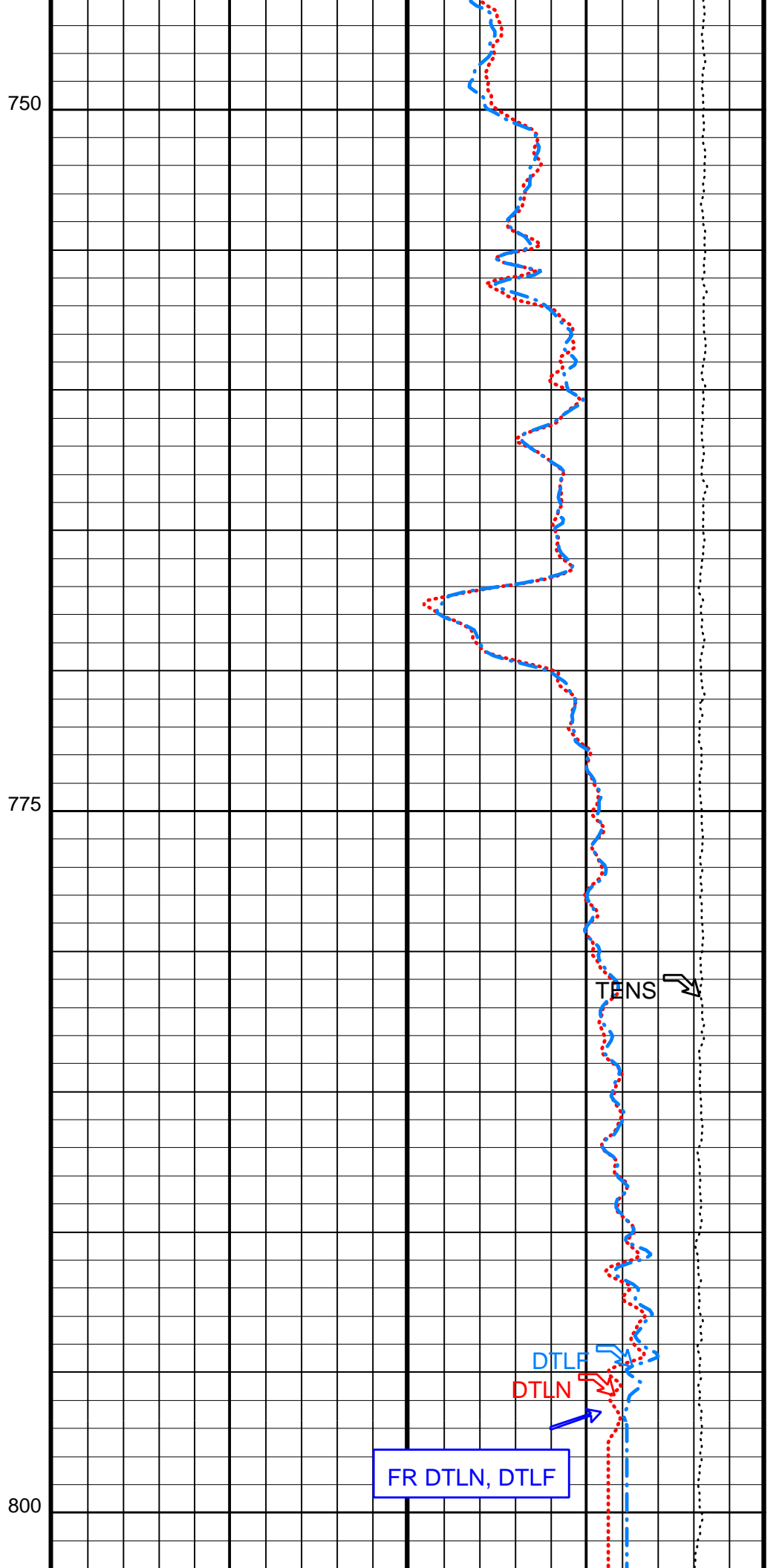
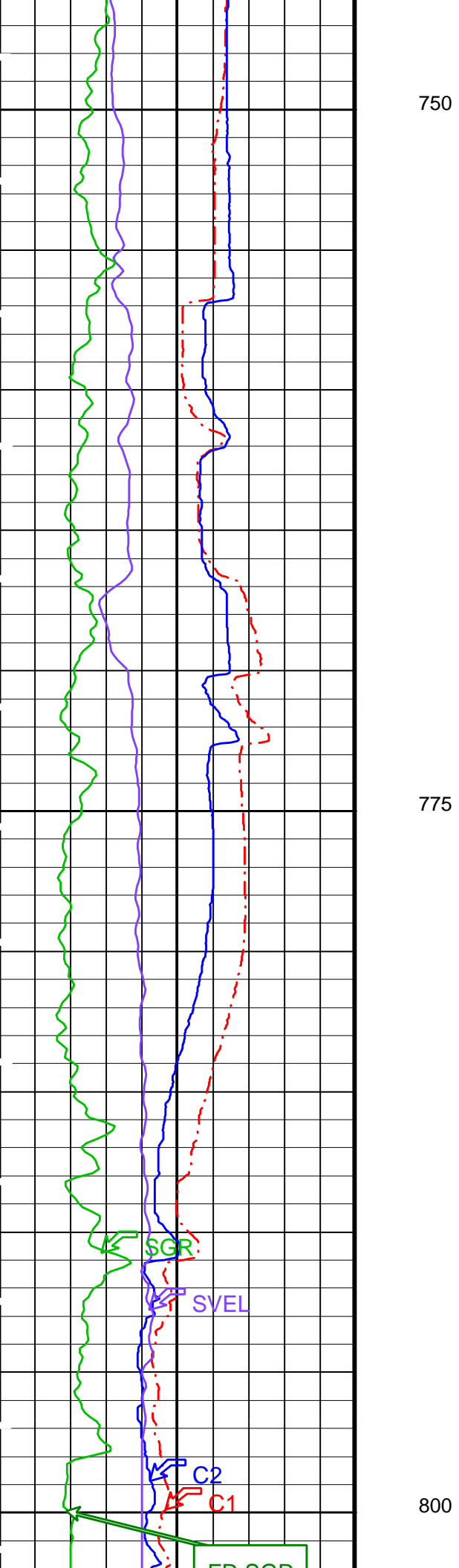
700

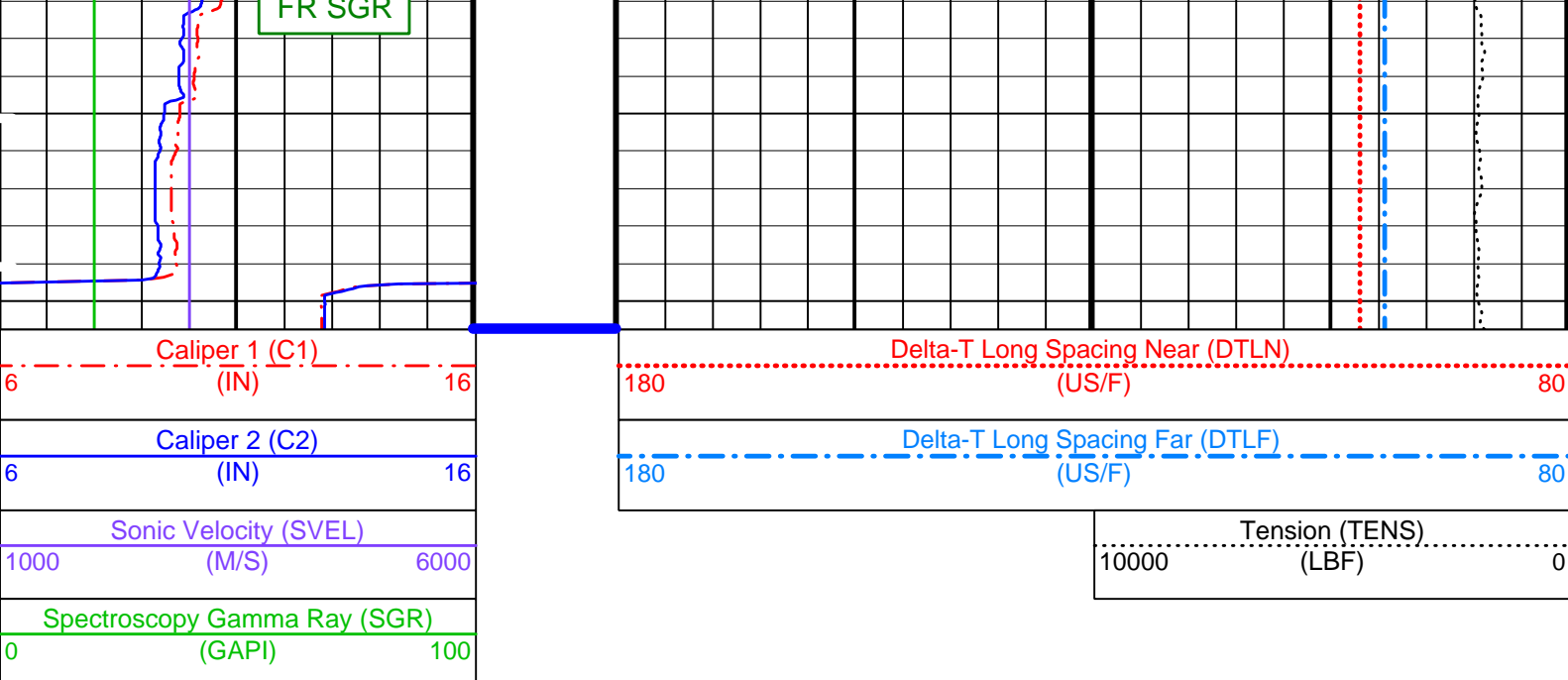
725



TENS

DTLE  
DTLN





PIP SUMMARY

Time Mark Every 60 S

Parameters

DLIS Name	Description	Value
BS	Bit Size	9.875 IN
CBAR	Constant Barite	1
CGMI	Spectro Computed Gamma Ray Minimum	0 GAPI
CGSH	Spectro Computed Gamma Ray Shale	100 GAPI
DFD	Drilling Fluid Density	1.02 G/C3
DTCM	Delta-T Computation Mode	FULL
KMIN	Potassium Minimum	0
KSHA	Potassium Shale	0.02
MODE	Firing Mode	LDDB
NFO	NGT Filtering Option	KALMAN
PMUD	Potassium Mud	0 %
SGMI	Spectro Gamma Ray Minimum	0 GAPI
SGSH	Spectro Gamma Ray Shale	100 GAPI
TMIN	Thorium Minimum	0 PPM
TSHA	Thorium Shale	12 PPM
UMIN	Uranium Minimum	0 PPM
USHA	Uranium Shale	3 PPM

Format: SONI Vertical Scale: 1:200 Graphics File Created: 25-Jan-2001 18:08

OP System Version: 9C1-303  
MCM

MEST-B OP91-kp2 NGT-C OP91-kp2  
SDT-C OP91-kp2 TCC-BF OP91-kp2

Output DLIS Files

DEFAULT MESTB .017 FN:30 PRODUCER 25-Jan-2001 18:08  
FMS\_CUST MESTB .017 FN:31 PRODUCER 25-Jan-2001 18:08

COMPANY: Lamont Doherty  
WELL: ODP Leg 194, Site 1194B  
FIELD: Marion Plateau  
Country: Australia  
Ocean: Pacific Ocean

BOTTOM LOG INTERVAL	810 m
SCHLUMBERGER DEPTH	811 m
DEPTH DRILLER	812.17 m
KELLY BUSHING	11.3 m
DRILL FLOOR	11 m
GROUND LEVEL	-384.8 m

**Schlumberger**

Sonic Log