

COMPANY: Lamont Doherty

WELL: ODP Leg 194, Site 1199A

FIELD: Marion Plateau

Country: Australia Ocean: Pacific Ocean



APS/Density Porosity

Country: Australia
Field: Marion Plateau
Location: Rig- Joides Resolution
Well: ODP Leg 194, Site 1199A
Company: Lamont Doherty

LOCATION		GROUND LEVEL		Elev.:	
Rig- Joides Resolution				K.B.	11.3 m
				G.L.	-327 m
				D.F.	11 m
Permanent Datum: _____		DES		Elev.: _____	
Log Measured From: _____		DES		above Perm. Datum	
Drilling Measured From: _____		DES			
API Serial No.:	SECTION	TOWNSHIP	RANGE		

Logging Date	Run 1	Run 2	Run
Run Number			
Depth Driller			
Schlumberger Depth			
Bottom Log Interval			
Top Log Interval			
Casing Driller Size @ Depth			
Casing Schlumberger			
Bit Size			
Type Fluid In Hole			
Density			
Fluid Loss			
Fluid Loss PH			
Source Of Sample			
RM @ Measured Temperature	@		
RMF @ Measured Temperature	@		
RMC @ Measured Temperature	@		
Source RMF	RMC		
RM @ MRT	RMF @ MRT	@	@
Maximum Recorded Temperatures			
Circulation Stopped	Time		
Logger On Bottom	Time		
Unit Number	Location		
Recorded By	Steve Kittredge		
Witnessed By	Heike Delius, Gregor Eberli		

Logging Date	2/21/01		
Run Number	1		
Depth Driller	746.5 m		
Schlumberger Depth	743 m		
Bottom Log Interval	742 m		
Top Log Interval	322 m		
Casing Driller Size @ Depth	0.000 in	@	396 m
Casing Schlumberger	396 m		
Bit Size	9.875 in		
Type Fluid In Hole	Sepiolite		
Density	1.1 g/cm3		
Fluid Loss	PH		
Fluid Loss PH			
Source Of Sample			
RM @ Measured Temperature	@		
RMF @ Measured Temperature	@		
RMC @ Measured Temperature	@		
Source RMF	RMC		
RM @ MRT	RMF @ MRT	@	@
Maximum Recorded Temperatures			
Circulation Stopped	Time	1100	
Logger On Bottom	Time	See Log	
Unit Number	99	Houston	
Recorded By	Steve Kittredge		
Witnessed By	Heike Delius, Gregor Eberli		

DISCLAIMER
 THE USE OF AND RELIANCE UPON THIS RECORDED-DATA BY THE HEREIN NAMED COMPANY (AND ANY OF ITS AFFILIATES, PARTNERS, REPRESENTATIVES, AGENTS, CONSULTANTS AND EMPLOYEES) IS SUBJECT TO THE TERMS AND CONDITIONS AGREED UPON BETWEEN SCHLUMBERGER AND THE COMPANY, INCLUDING: (a) RESTRICTIONS ON USE OF THE RECORDED-DATA; (b) DISCLAIMERS AND WAIVERS OF WARRANTIES AND REPRESENTATIONS REGARDING COMPANY'S USE OF AND RELIANCE UPON THE RECORDED-DATA; AND (c) CUSTOMER'S FULL AND SOLE RESPONSIBILITY FOR ANY INFERENCE DRAWN OR DECISION MADE IN CONNECTION WITH THE USE OF THIS RECORDED-DATA.

OTHER SERVICES1 OS1: None OS2: OS3: OS4: OS5:	OTHER SERVICES2 OS1: OS2: OS3: OS4: OS5:
--	---

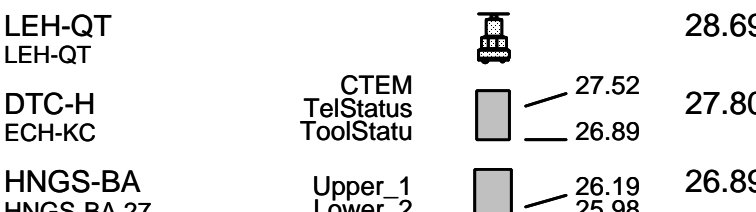
REMARKS: RUN NUMBER 1 Hole Cored With RCB. WHC used on all runs. Had problems getting past 455 MBRF. Log Measured in Meters Below Rig Floor (MBRF). Sea Floor Driller- 327 MBRF. Sea Floor Logger- 326 MBRF. Driller Pipe Driller- 396 MBRF. Drill Pipe Logger- 396 MBRF. Total Depth Driller- 746.5 MBRF. Total Depth Logger- 743	REMARKS: RUN NUMBER 2
Sepiolite Mud used to flush the hole.	

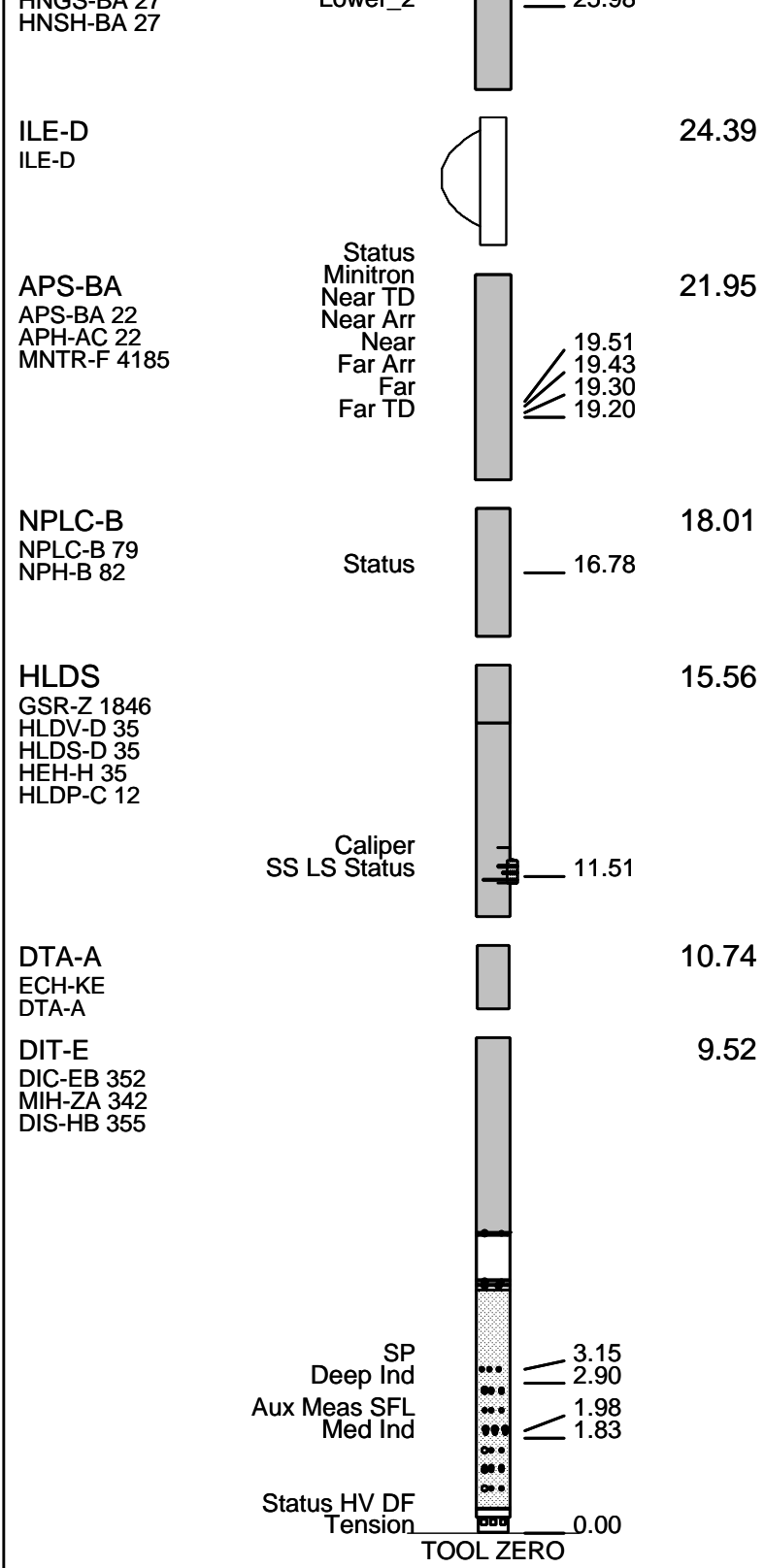
RUN 1			RUN 2		
SERVICE ORDER #:			SERVICE ORDER #:		
PROGRAM VERSION:		9C1-303	PROGRAM VERSION:		
FLUID LEVEL:			FLUID LEVEL:		
LOGGED INTERVAL	START	STOP	LOGGED INTERVAL	START	STOP

EQUIPMENT DESCRIPTION

RUN 1	RUN 2
SURFACE EQUIPMENT	
SFT-281 24 SFT-178 4722 GSR-U 135 WITM (DTS)-A	

DOWNHOLE EQUIPMENT	
LEH-QT LEH-QT	28.69
DTC-H ECH-KC	27.80
HNGS-BA HNGS BA 27	26.89





MAXIMUM STRING DIAMETER 3.88 IN
 MEASUREMENTS RELATIVE TO TOOL ZERO
 ALL LENGTHS IN METERS

Output DLIS Files

DEFAULT	DITE .004	FN:5	PRODUCER	21-Feb-2001 18:55	743.0 M	322.0 M
TCOMBO_CUST	DITE .004	FN:6	PRODUCER	21-Feb-2001 18:55	743.0 M	321.9 M

OP System Version: 9C1-303
MCM

MAIN UP LOG

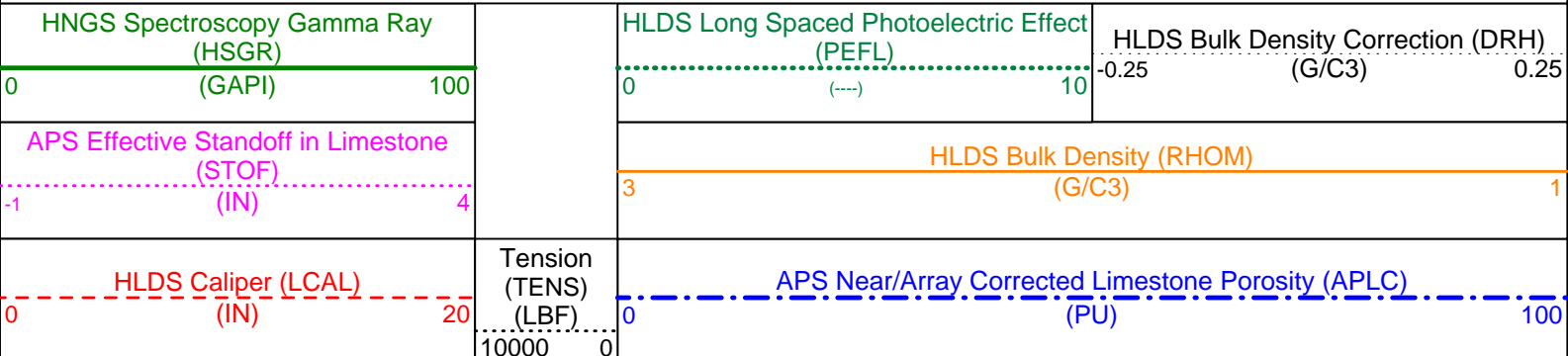
DIT-E	OP91-kp2	DTA-A	OP91-kp2
HLDS	OP91-kp2	NPLC-B	OP91-kp2
APS-BA	OP91-kp2	HNGS-BA	OP91-kp2
DTC-H	OP91-kp2		

Changed Parameter Summary

DLIS Name	New Value	Previous Value	Depth & Time
GCSE	BS	LCAL	427.7 20:23:23

PIP SUMMARY

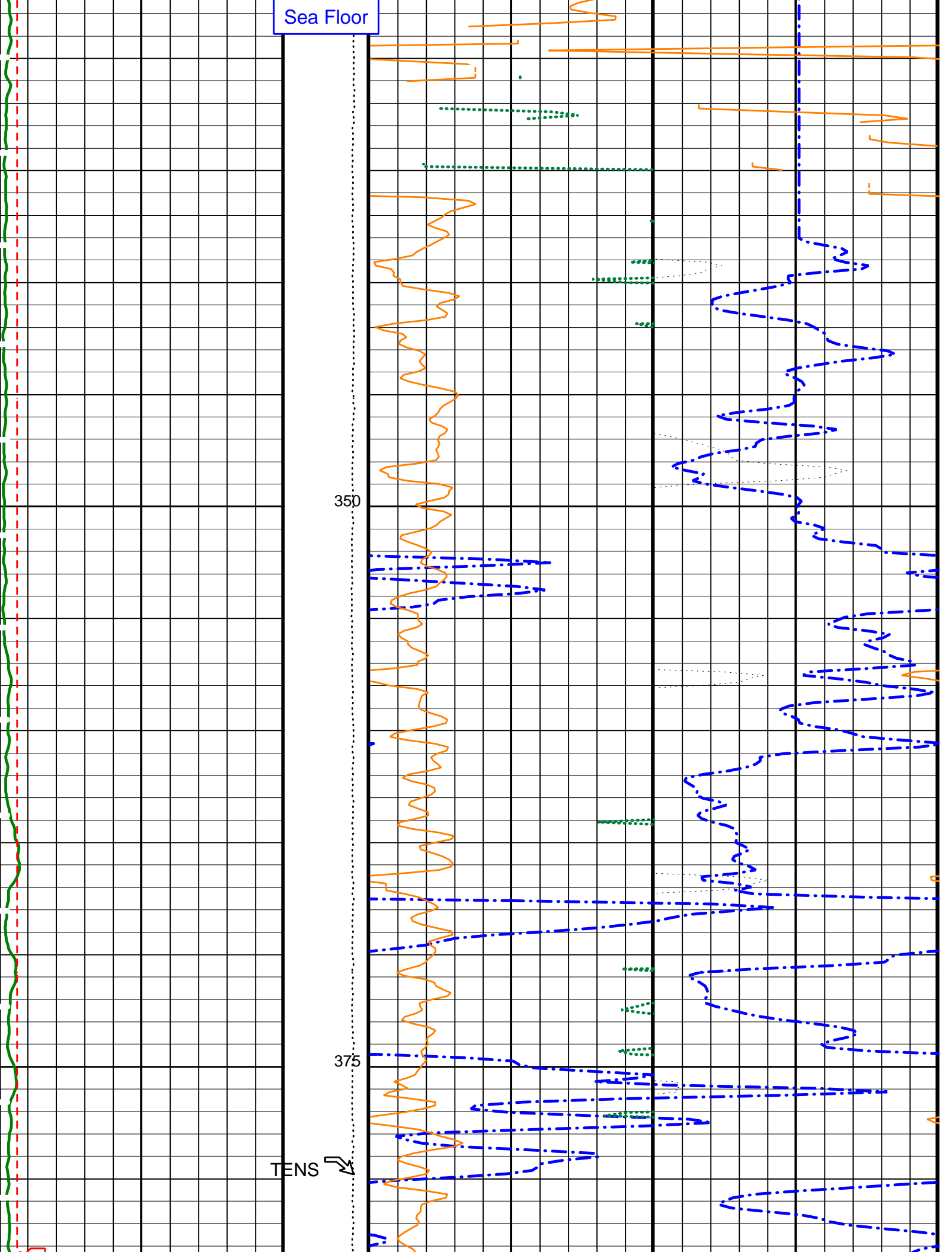
▶ Time Mark Every 60 S



Last Reading

325

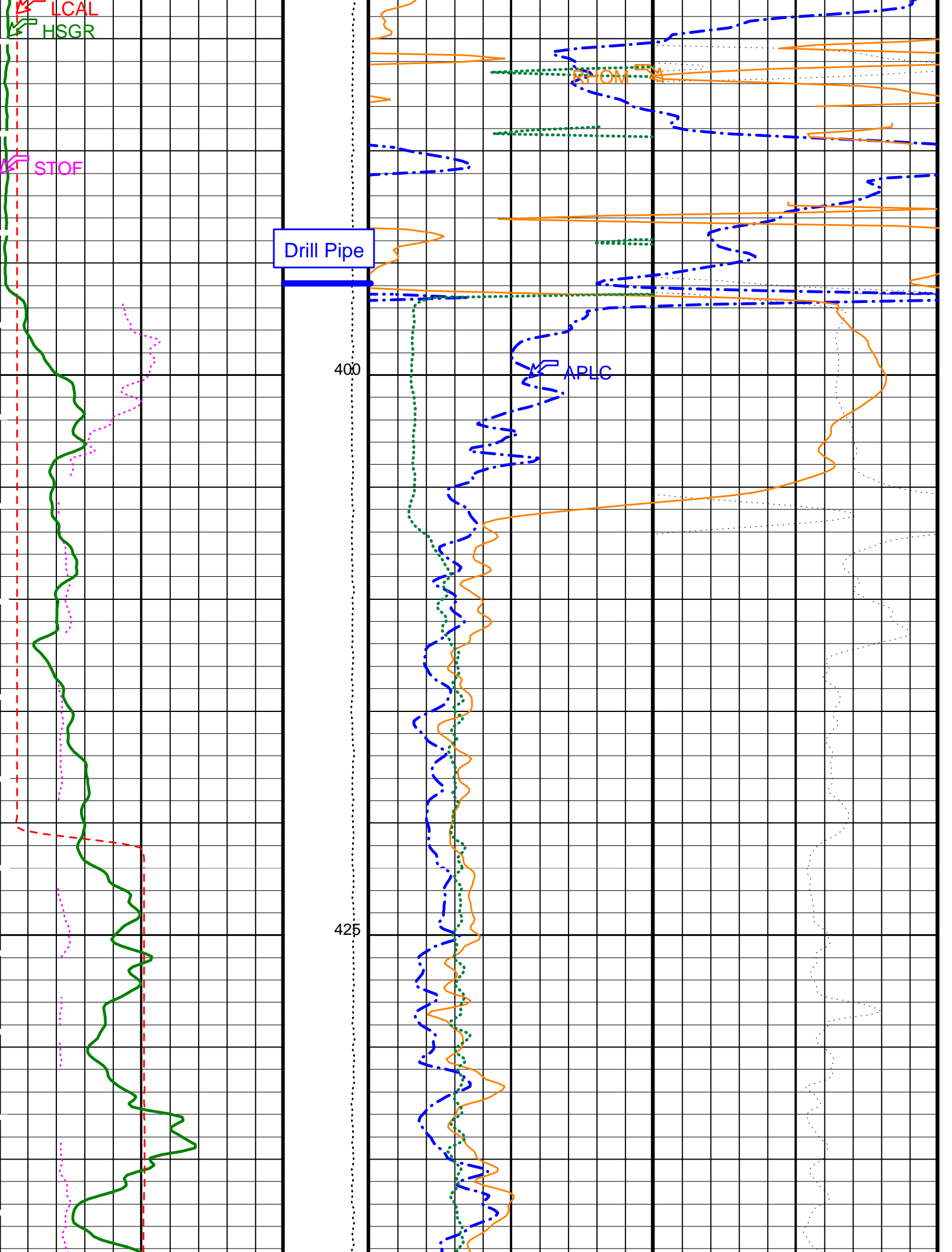
Sea Floor

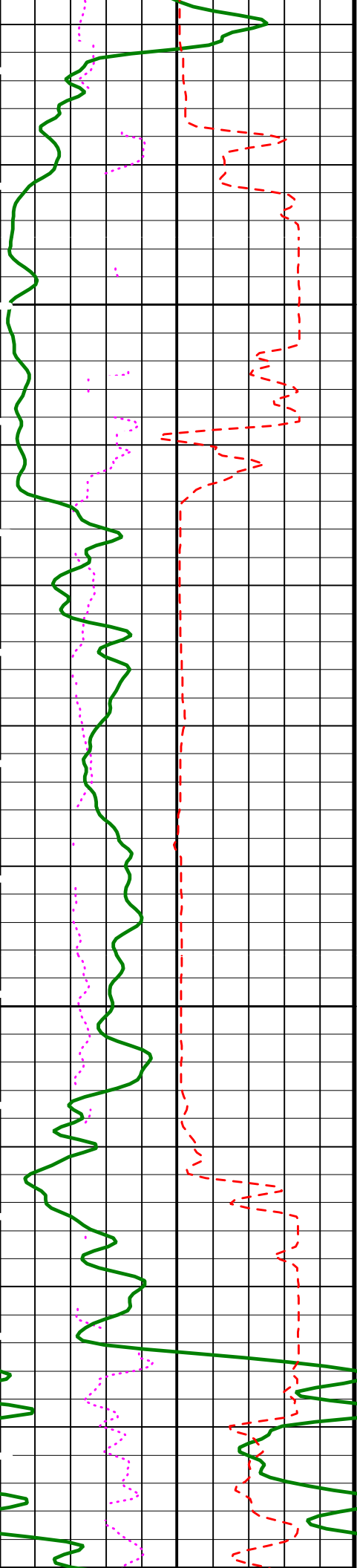


350

375

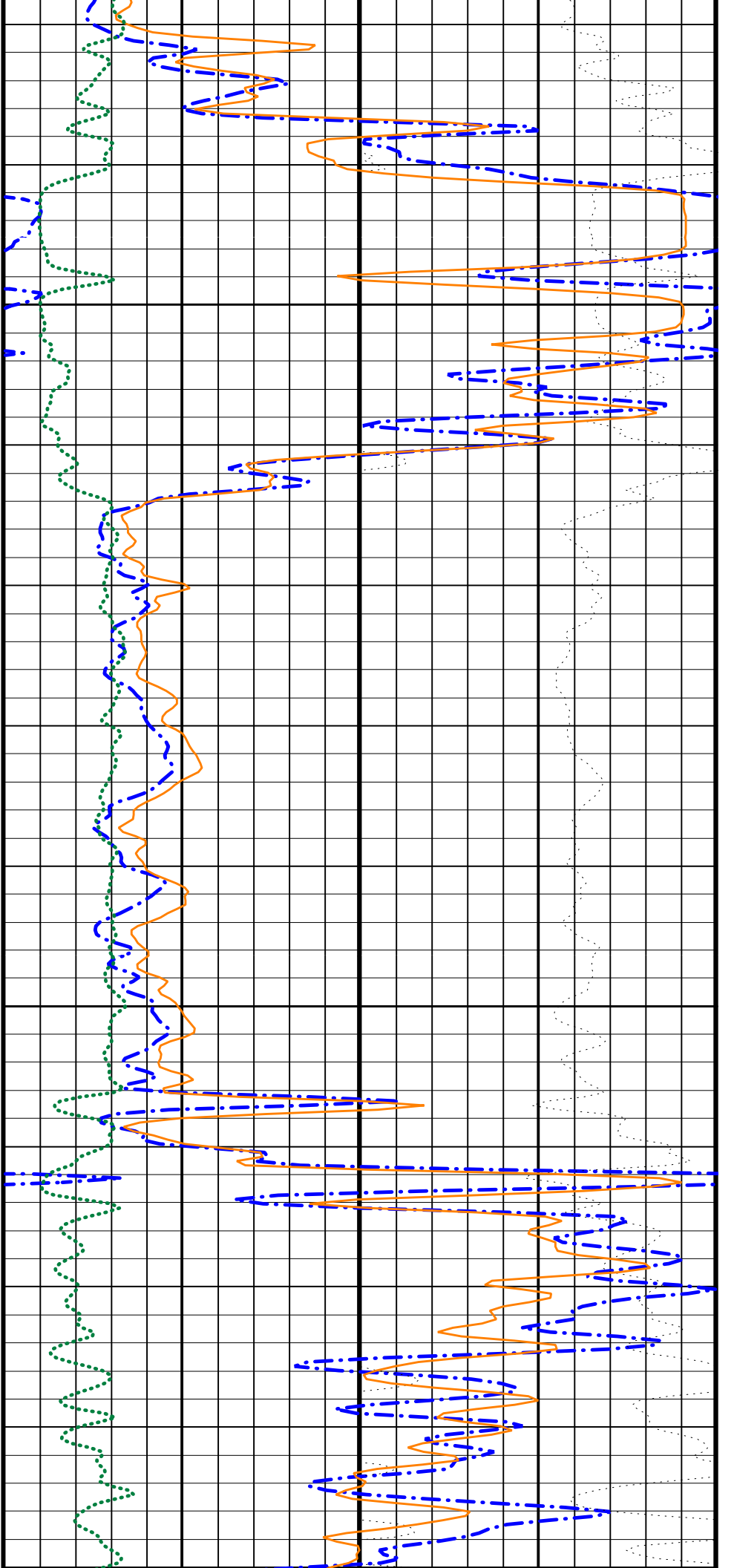
TENS ↗

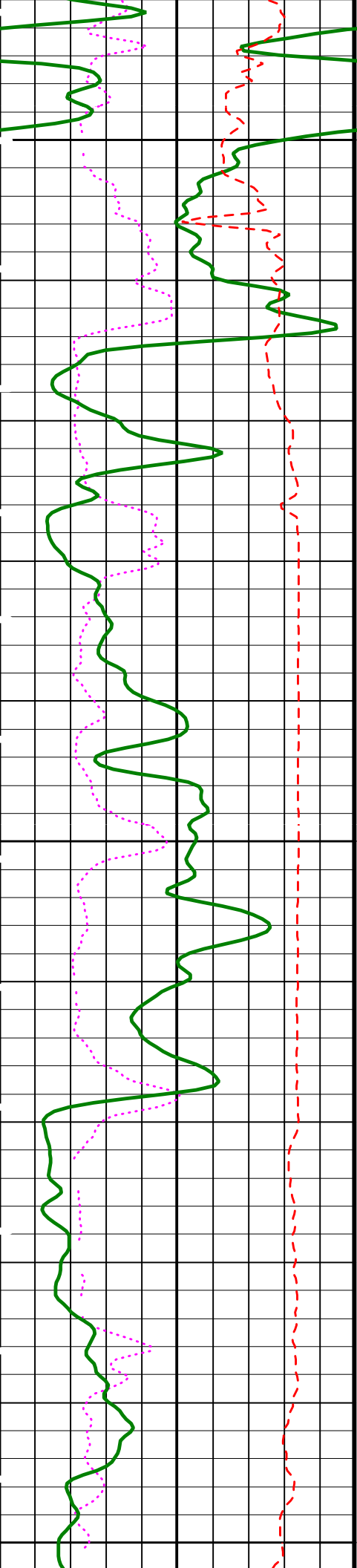




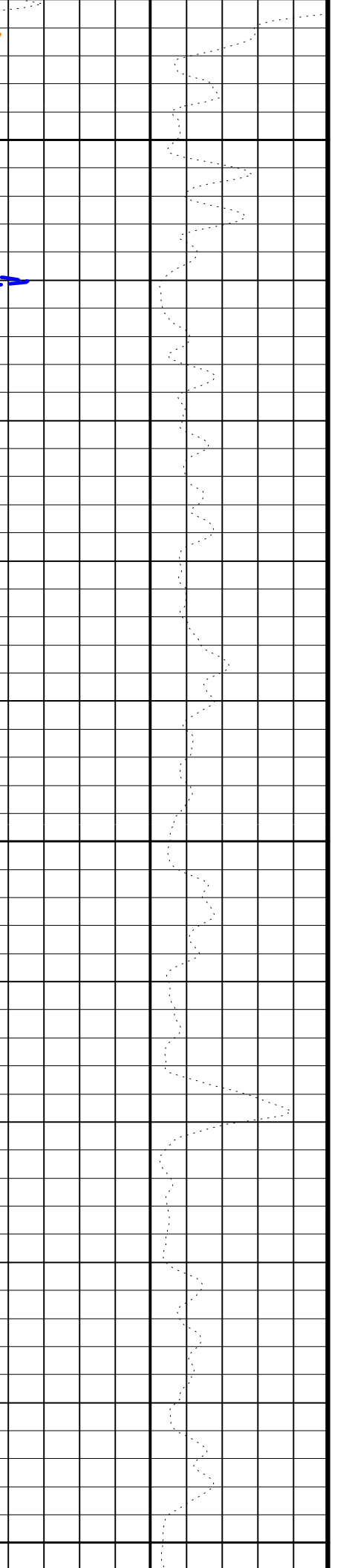
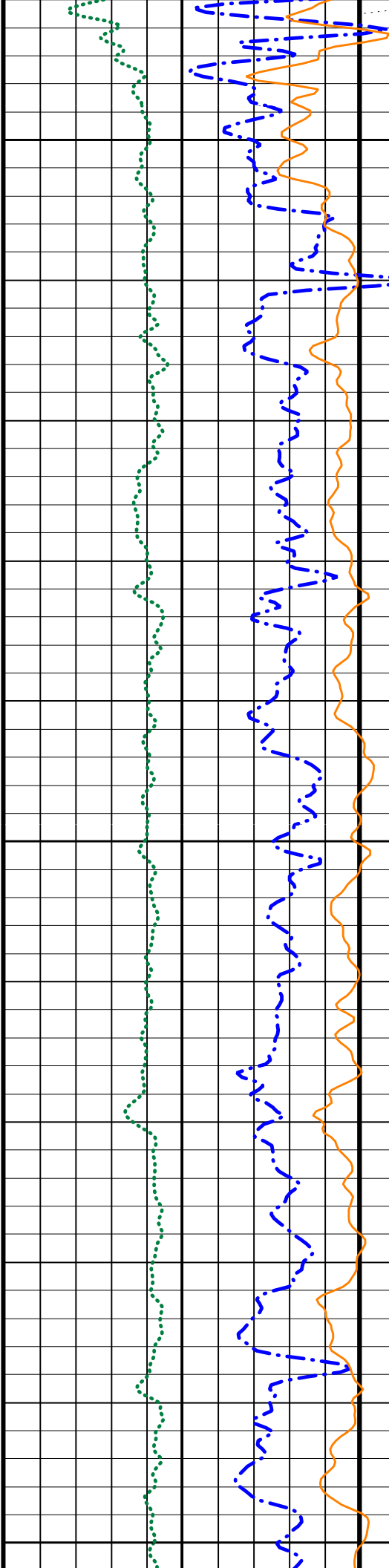
450

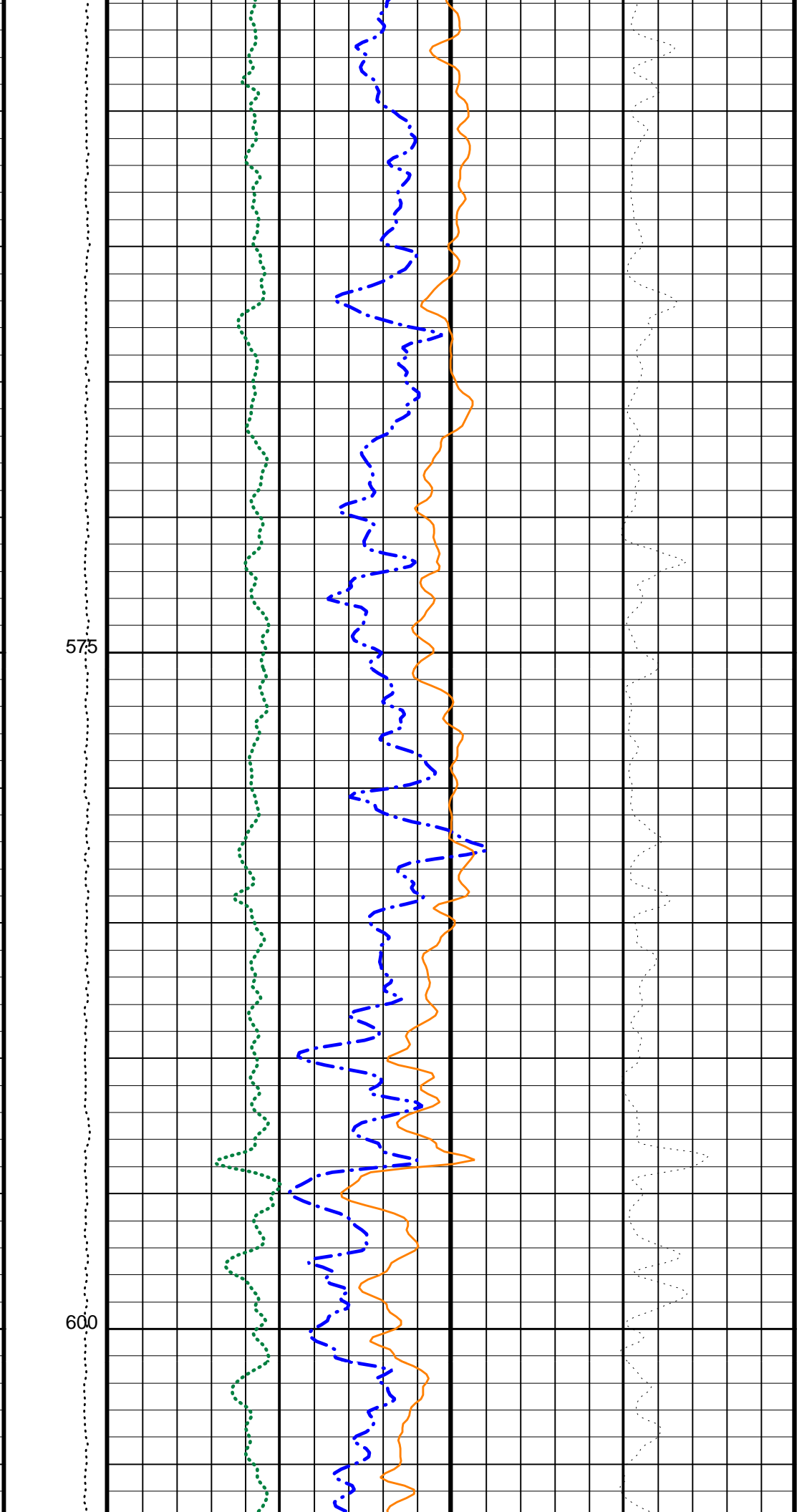
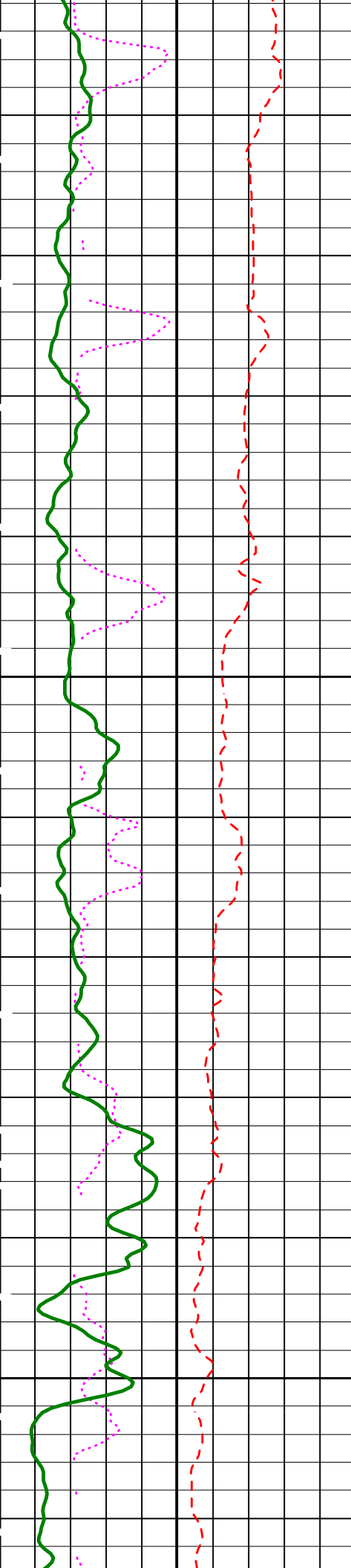
475

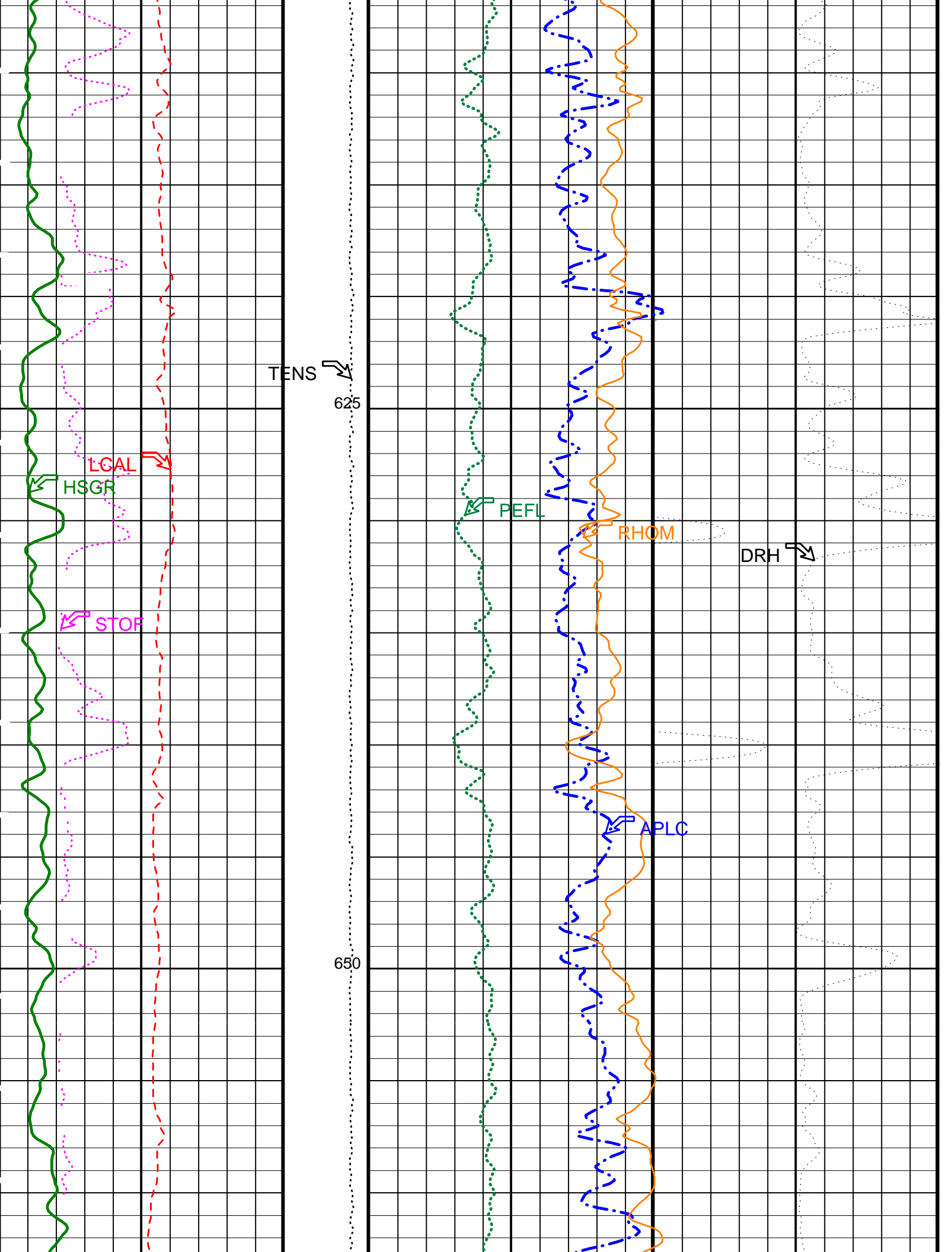


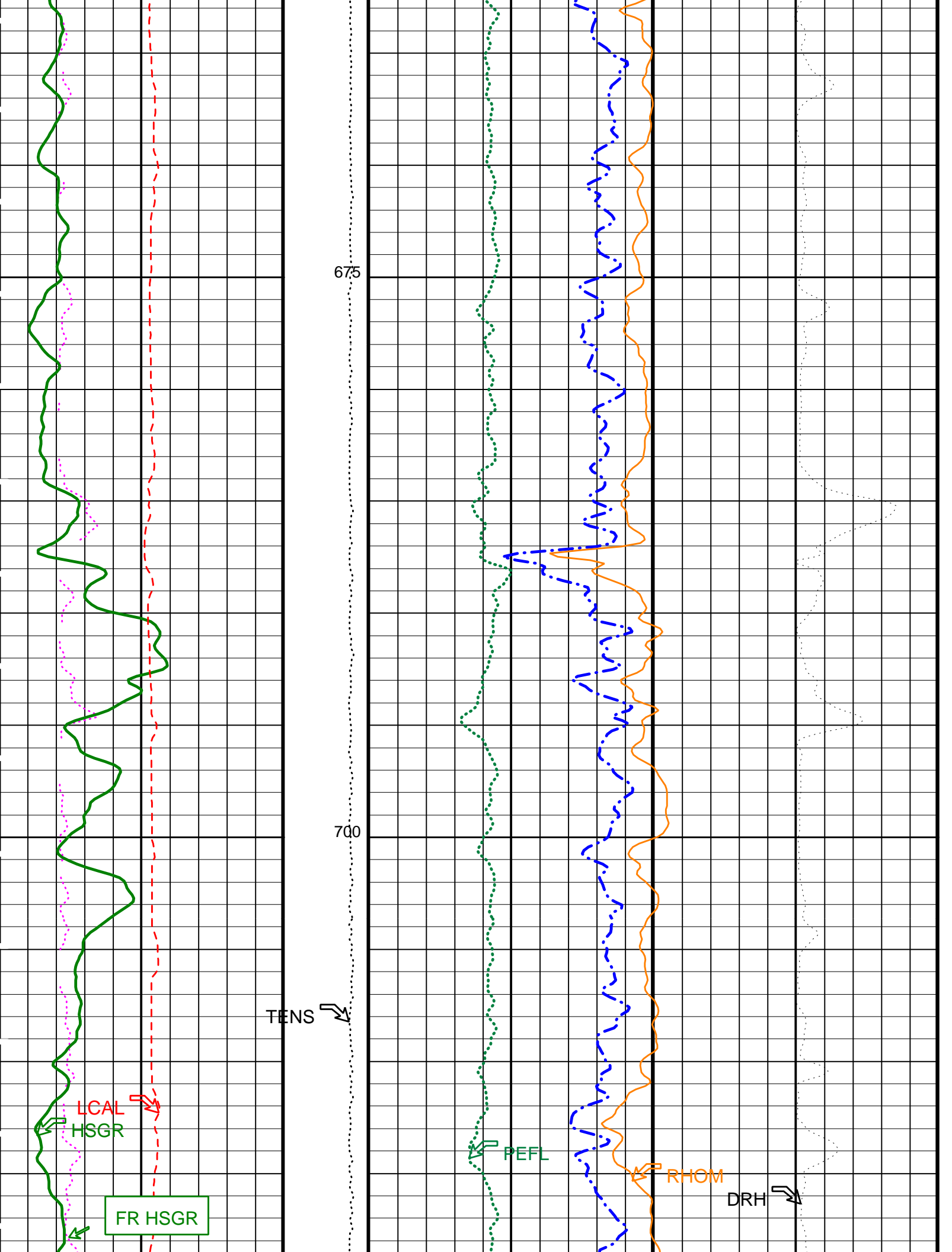


500
525
550









BHK	HNGS Borehole Potassium Correction Concentration	0	
BHS	Borehole Status	OPEN	
BHT	Bottom Hole Temperature (used in calculations)	100	DEGC
BKSF	HNGS Borehole Fluid Excluder Sleeve Algorithm Factor	1	
BKSH	HNGS Borehole Fluid Excluder Sleeve Algorithm High Channel	245	
BKSL	HNGS Borehole Fluid Excluder Sleeve Algorithm Low Channel	17	
BS	Bit Size	9.875	IN
BSAL	Borehole Salinity	35000.00	PPM
CSD1	Inner Casing Outer Diameter	0	IN
CSD2	Outer Casing Outer Diameter	0	IN
CSIZ	Current Casing Size	0.000	IN
CSW1	Inner Casing Weight	0	LB/F
CSW2	Outer Casing Weight	0	LB/F
CWEI	Casing Weight	0.00	LB/F
D1PR	HNGS Detector 1 Calibration Thorium Peak Resolution	7.79616	%
D1TC	HNGS Detector 1 Calibration Temperature	30.594	DEGC
D1TL	HNGS Detector 1 Calibration Thorium Peak Location	211.429	
D2PR	HNGS Detector 2 Calibration Thorium Peak Resolution	6.70686	%
D2TC	HNGS Detector 2 Calibration Temperature	29.6607	DEGC
D2TL	HNGS Detector 2 Calibration Thorium Peak Location	210.041	
DBCC	HNGS Barite Constant Correction Flag	NONE	
DFD	Drilling Fluid Density	1.10	G/C3
DHC	Density Hole Correction	BS	
DPPM	Density Porosity Processing Mode	HIRS	
FD	Fluid Density	1.01	G/C3
FSAL	Formation Salinity	35500	PPM
GCF1_START	HNGS Detector 1 GCF Constant	1	
GCF2_START	HNGS Detector 2 GCF Constant	1	
GCSE	Generalized Caliper Selection	LCAL	
GDEV	Average Angular Deviation of Borehole from Normal	0	DEG
GGRD	Geothermal Gradient	0.018227	DC/M
GTSE	Generalized Temperature Selection	LINEAR_ESTIMATE	
H1P	HNGS Detector 1 Allow/Disallow In Processing	ALLOW	
H2P	HNGS Detector 2 Allow/Disallow In Processing	ALLOW	
HABK	HNGS Borehole Potassium Running Average	-0.00126851	
HALF	HNGS Alpha Filter Length	60	IN
HATIM	HNGS Marquardt Accumulation Time	600	S
HCRB	HNGS Apply Borehole Potassium Correction	NONE	
HMWM	Mud Weighting Material	NATU	
HNPE	HNGS Processing Enable	YES	
HSLV	HNGS Borehole Fluid Excluder Sleeve Status	NO	
HSVN	HNGS Spectral Standards Version Number	8.6664e-032	
LATC	HLDS Activation Correction	ON	
MARQ_START	HNGS Marquardt Start-up Mode	INTERNAL	
MDEN	Matrix Density	2.71	G/C3
NARC	APS Near/Array Calibration Ratio	1.0597	
NFRC	APS Near/Far Calibration Ratio	0.897595	
RDF1_START	HNGS Detector 1 RDF Constant	0	
RDF2_START	HNGS Detector 2 RDF Constant	0	
S1BI	HNGS Detector 1 Calibration Bismuth Count Rate	1.3	CPS
S1NA	HNGS Detector 1 Calibration Sodium Count Rate	22.4203	CPS
S1NG	HNGS Detector 1 Calibration End-On / Side-On Gain Ratio	0.992953	
S2BI	HNGS Detector 2 Calibration Bismuth Count Rate	1.3	CPS
S2NA	HNGS Detector 2 Calibration Sodium Count Rate	22.621	CPS
S2NG	HNGS Detector 2 Calibration End-On / Side-On Gain Ratio	0.985234	
SABK	HNGS Statistical Uncertainty in Borehole Potassium Running Average	0.000173244	
SGRC	HNGS Standard Gamma-Ray Correction Flag	YES	
SHT	Surface Hole Temperature	20.0001	DEGC
TD	Total Depth	9987.69	M
TPOS	Tool Position	ECCE	
VBA1	HNGS Detector 1 Variable Barite Factor Running Average	1.01629	
VBA2	HNGS Detector 2 Variable Barite Factor Running Average	0.9433	

Format: APSLiquidPorosity_1 Vertical Scale: 1:200 Graphics File Created: 21-Feb-2001 18:55

OP System Version: 9C1-303
MCM

DIT-E	OP91-kp2	DTA-A	OP91-kp2
HLDS	OP91-kp2	NPLC-B	OP91-kp2
APS-BA	OP91-kp2	HNGS-BA	OP91-kp2
DTC-H	OP91-kp2		

Output DLIS Files

DEFAULT	DITE .004	FN:5	PRODUCER	21-Feb-2001 18:55
TCOMBO_CUST	DITE .004	FN:6	PRODUCER	21-Feb-2001 18:55

WELL: ODP Leg 194, Site 1199A
FIELD: Marion Plateau
Country: Australia
Ocean: Pacific Ocean

SCHLUMBERGER DEPTH	743 m
DEPTH DRILLER	746.5 m
KELLY BUSHING	11.3 m
DRILL FLOOR	11 m
GROUND LEVEL	-327 m

Schlumberger

APS/Density Porosity