

DISCLAIMER

THE USE OF AND RELIANCE UPON THIS RECORDED-DATA BY THE HEREIN NAMED COMPANY (AND ANY OF ITS AFFILIATES, PARTNERS, REPRESENTATIVES, AGENTS, CONSULTANTS AND EMPLOYEES) IS SUBJECT TO THE TERMS AND CONDITIONS AGREED UPON BETWEEN SCHLUMBERGER AND THE COMPANY, INCLUDING: (a) RESTRICTIONS ON USE OF THE RECORDED-DATA; (b) DISCLAIMERS AND WAIVERS OF WARRANTIES AND REPRESENTATIONS REGARDING COMPANY'S USE OF AND RELIANCE UPON THE RECORDED-DATA; AND (c) CUSTOMER'S FULL AND SOLE RESPONSIBILITY FOR ANY INFERENCE DRAWN OR DECISION MADE IN CONNECTION WITH THE USE OF THIS RECORDED-DATA.


OTHER SERVICES1 OS1: None OS2: OS3: OS4: OS5:	OTHER SERVICES2 OS1: OS2: OS3: OS4: OS5:
--	---

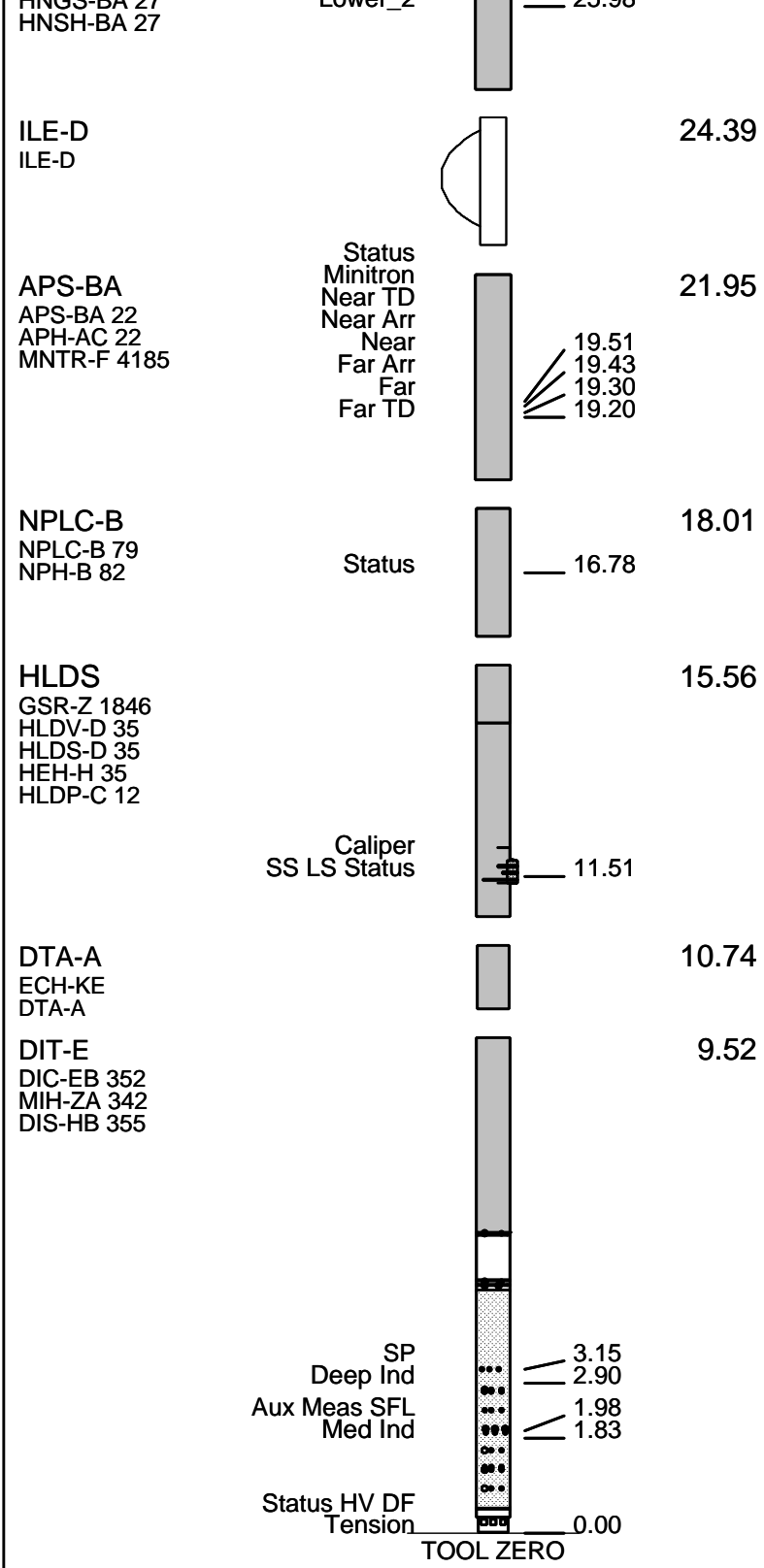
REMARKS: RUN NUMBER 1 Hole Cored With RCB. WHC used on all runs. Had problems getting past 455 MBRF. Log Measured in Meters Below Rig Floor (MBRF). Sea Floor Driller- 327 MBRF. Sea Floor Logger- 326 MBRF. Driller Pipe Driller- 396 MBRF. Drill Pipe Logger- 396 MBRF. Total Depth Driller- 746.5 MBRF. Total Depth Logger- 743	REMARKS: RUN NUMBER 2
Sepiolite Mud used to flush the hole.	

RUN 1			RUN 2		
SERVICE ORDER #:			SERVICE ORDER #:		
PROGRAM VERSION:	9C1-303		PROGRAM VERSION:		
FLUID LEVEL:			FLUID LEVEL:		
LOGGED INTERVAL	START	STOP	LOGGED INTERVAL	START	STOP

EQUIPMENT DESCRIPTION

RUN 1		RUN 2	
SURFACE EQUIPMENT			
SFT-281 24 SFT-178 4722 GSR-U 135 WITM (DTS)-A			

DOWNHOLE EQUIPMENT			
LEH-QT		28.69	
LEH-QT			
DTC-H	CTEM	27.52	27.80
ECH-KC	TelStatus ToolStatu	26.89	
HNGS-BA	Upper_1	26.19	26.89
HNGS BA 27	Lower_2	25.98	



TOOL ZERO

MAXIMUM STRING DIAMETER 3.88 IN
 MEASUREMENTS RELATIVE TO TOOL ZERO
 ALL LENGTHS IN METERS

Output DLIS Files

DEFAULT	DITE .004	FN:5	PRODUCER	21-Feb-2001 18:55	743.0 M	322.3 M
TCOMBO_CUST	DITE .004	FN:6	PRODUCER	21-Feb-2001 18:55	743.0 M	321.9 M

OP System Version: 9C1-303
MCM

MAIN UP LOG

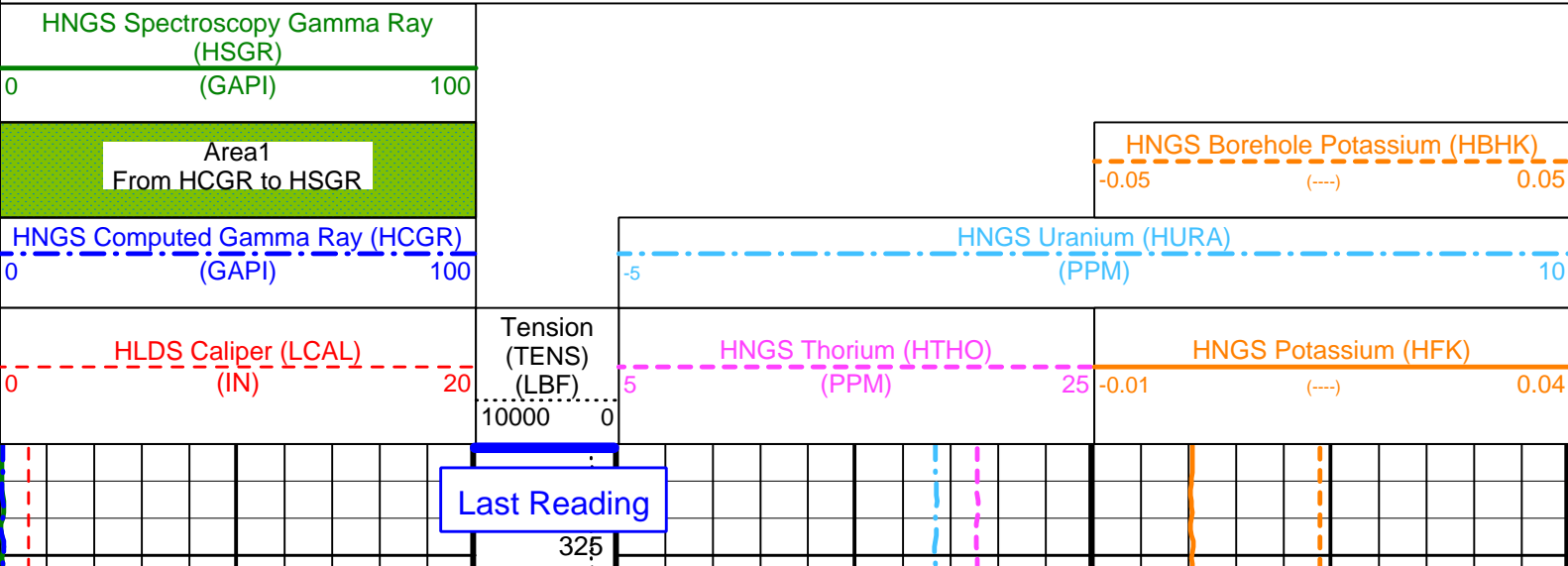
DIT-E	OP91-kp2	DTA-A	OP91-kp2
HLDS	OP91-kp2	NPLC-B	OP91-kp2
APS-BA	OP91-kp2	HNGS-BA	OP91-kp2
DTC-H	OP91-kp2		

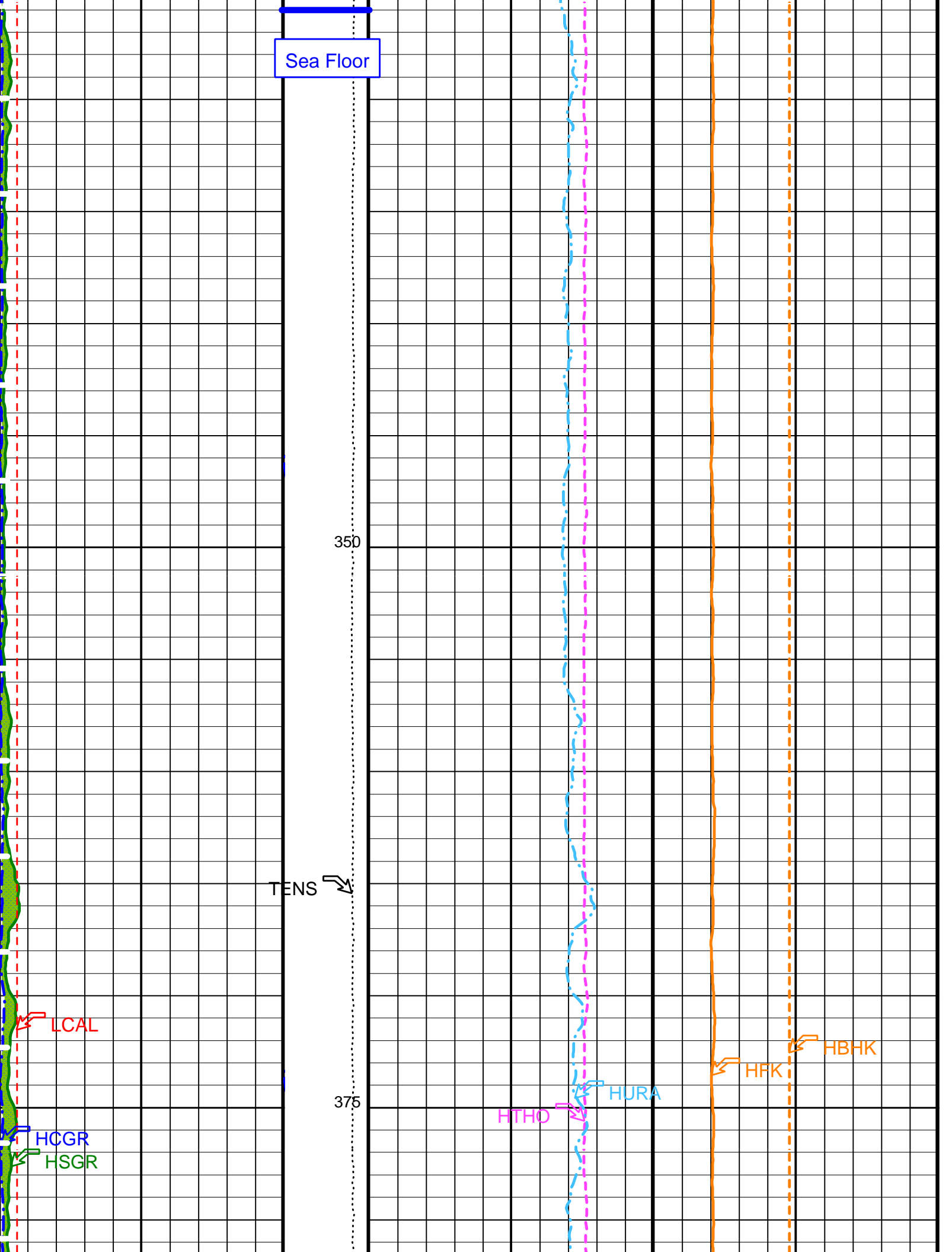
Changed Parameter Summary

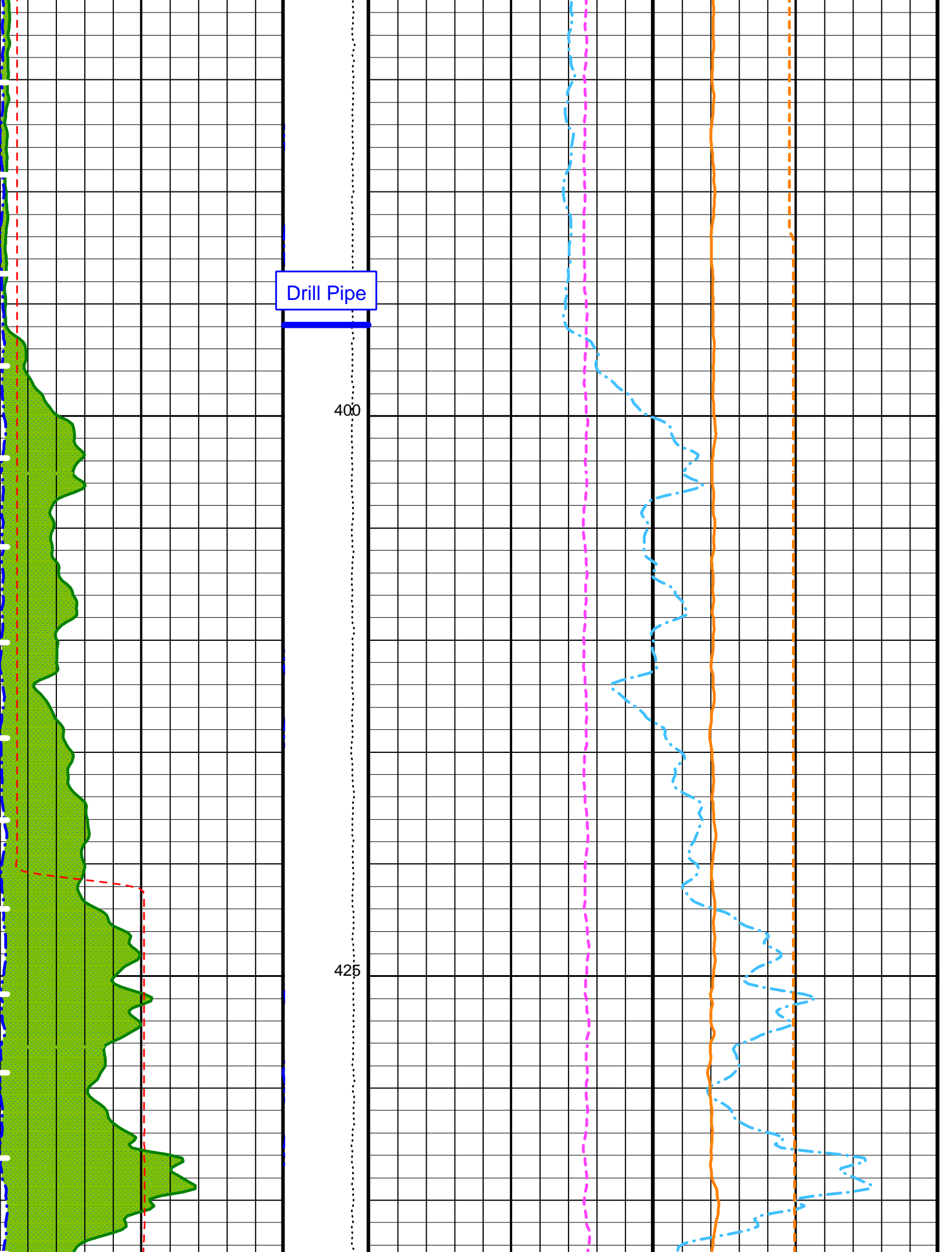
DLIS Name	New Value	Previous Value	Depth & Time
GCSE	BS	LCAL	427.7 20:23:23

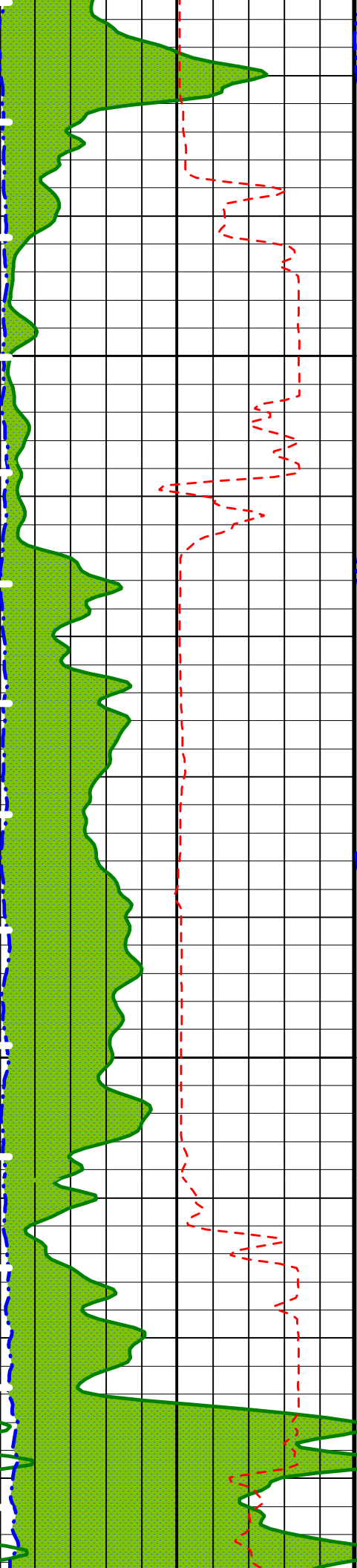
PIP SUMMARY

Time Mark Every 60 S



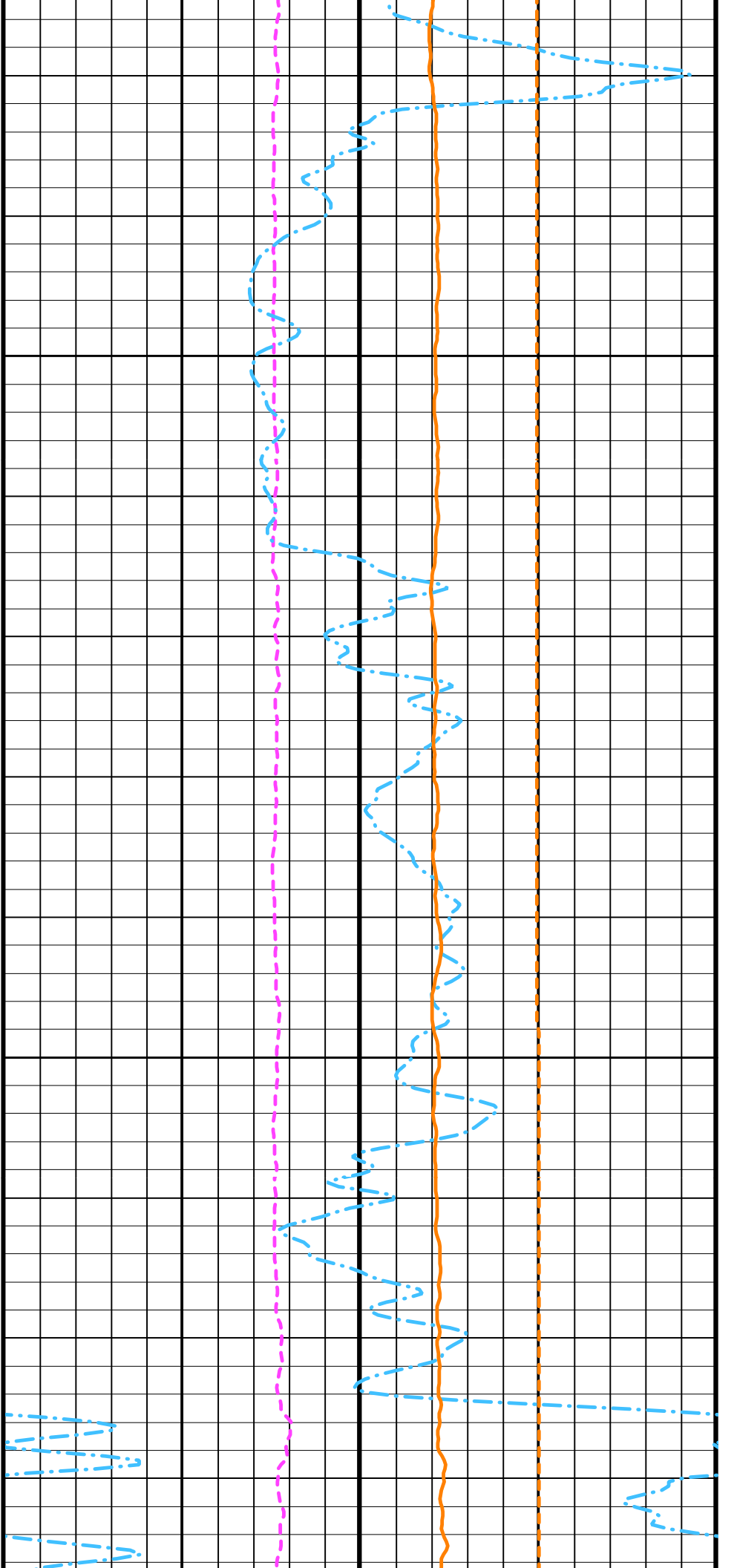


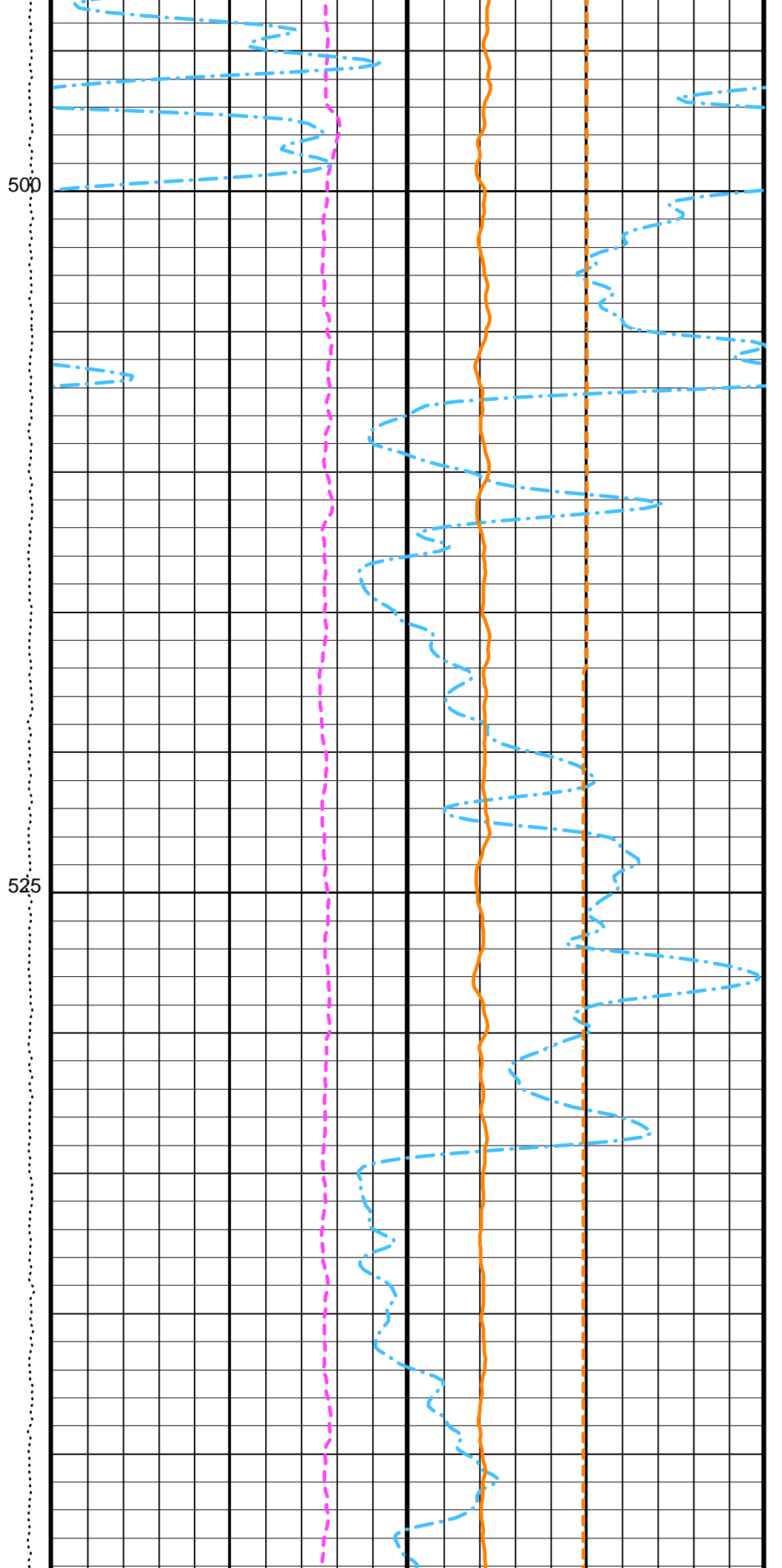
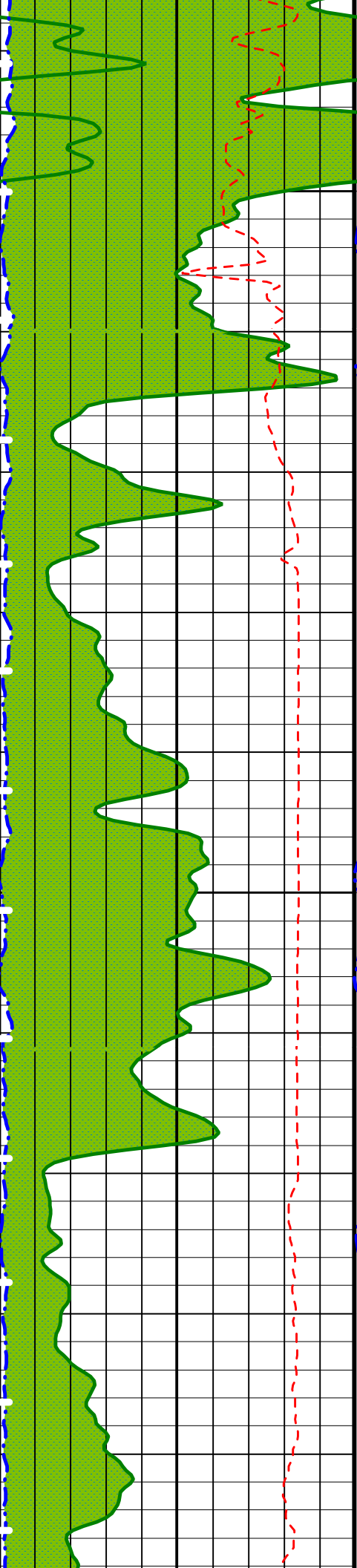


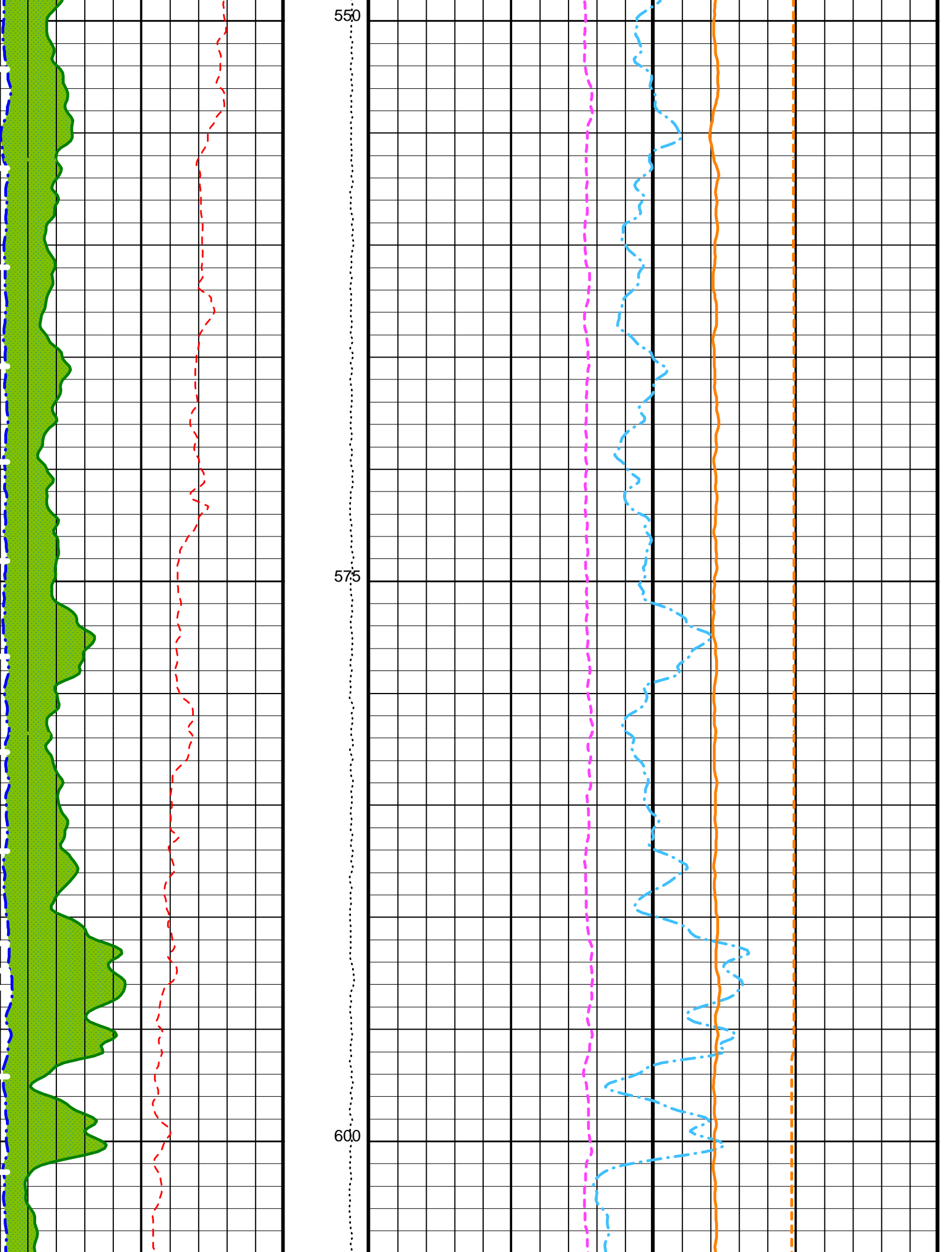


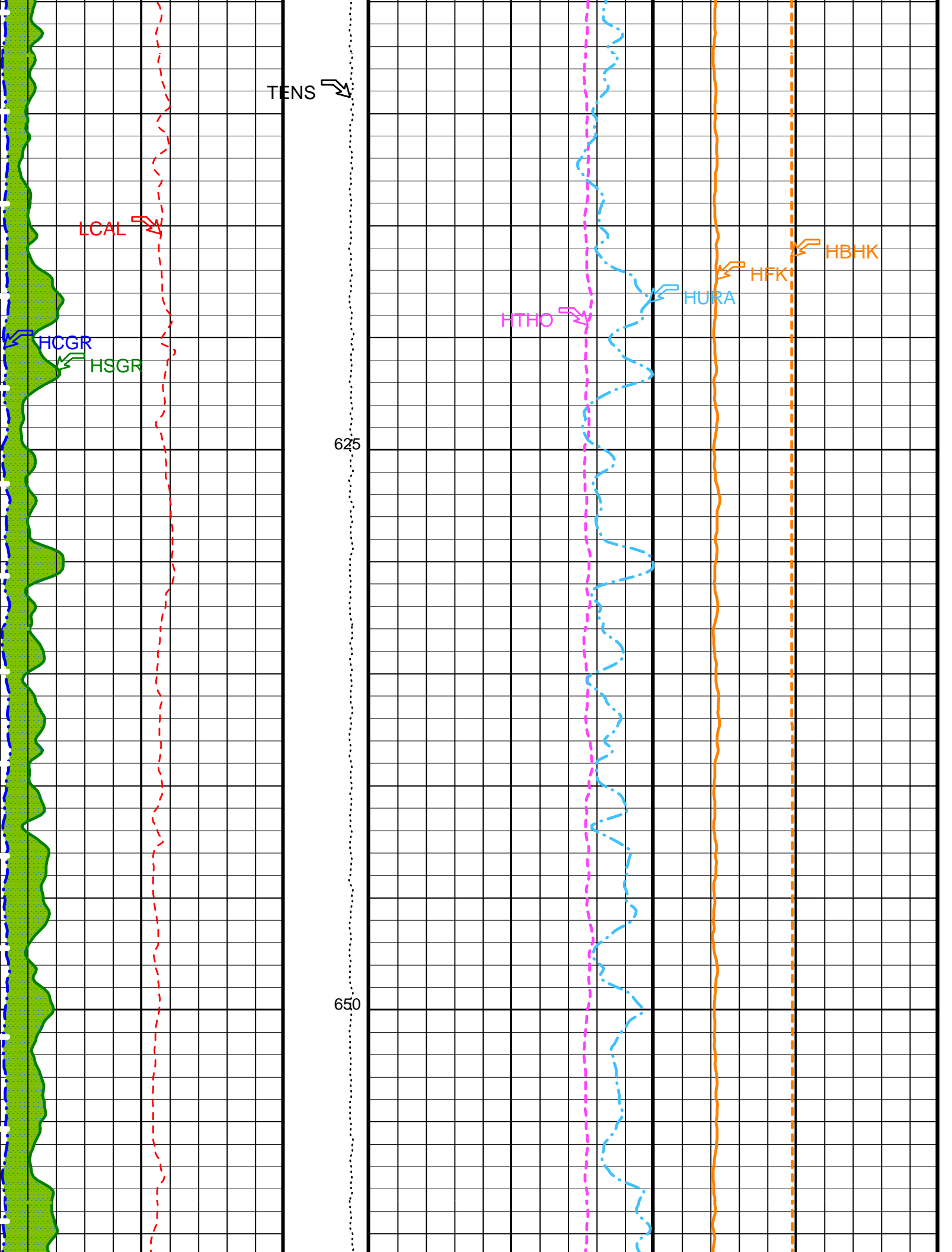
450

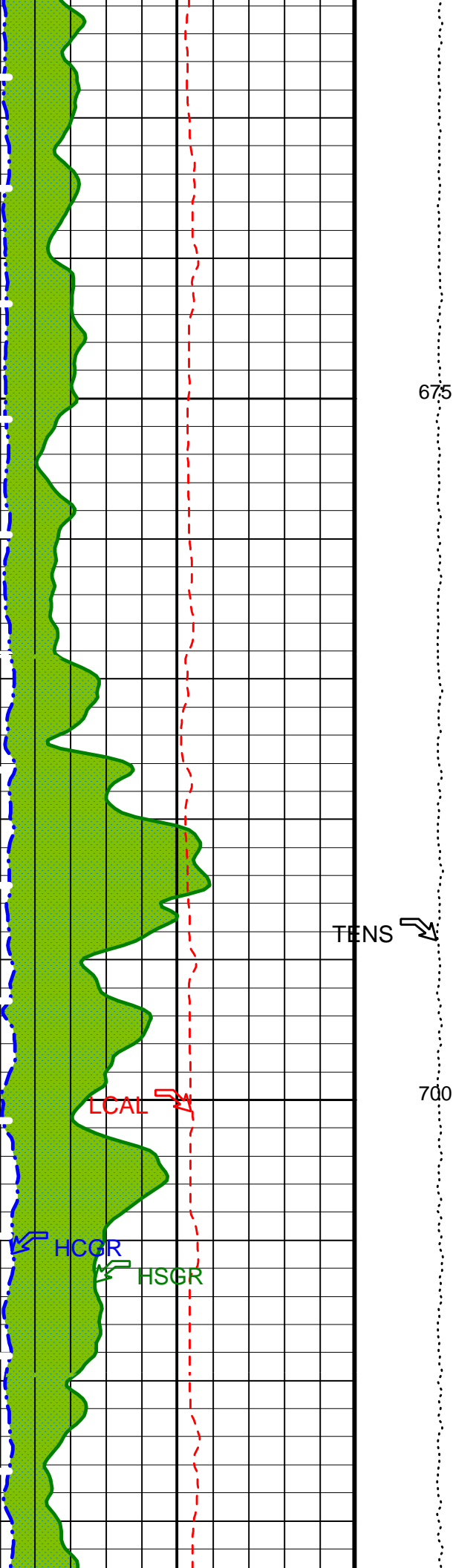
475





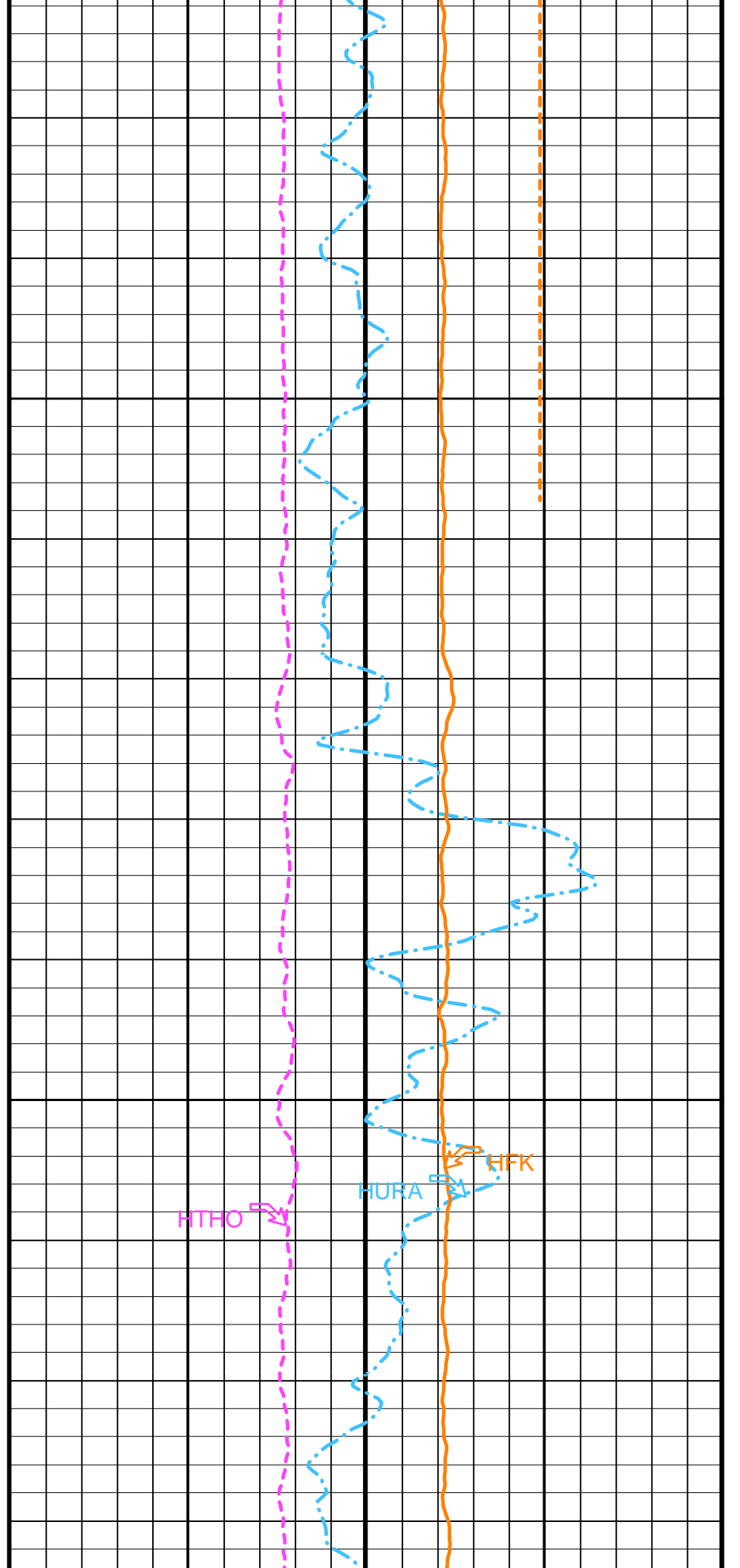


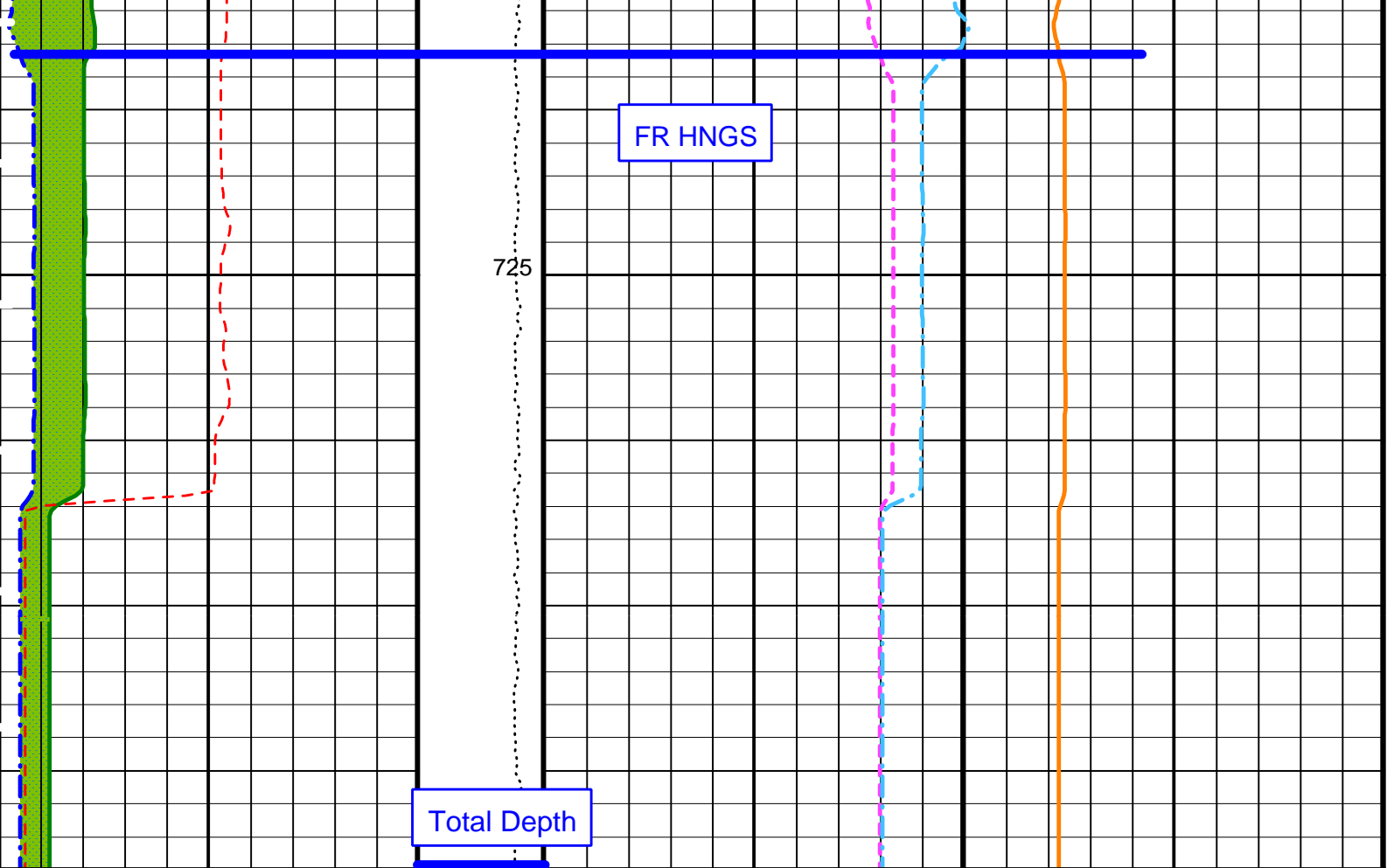




675

700





HLDS Caliper (LCAL) (IN)	0	20	Tension (TENS) (LBF)	10000	0	HNGS Thorium (HTHO) (PPM)	5	25	HNGS Potassium (HFK)	-0.01	(----	0.04
HNGS Computed Gamma Ray (HCGR) (GAPI)	0	100				HNGS Uranium (HURA) (PPM)	-5	10				
Area1 From HCGR to HSGR												
HNGS Spectroscopy Gamma Ray (HSGR) (GAPI)	0	100				HNGS Borehole Potassium (HBHK)	-0.05	(----	0.05			

PIP SUMMARY

Time Mark Every 60 S

Parameters

DLIS Name	Description	Value
BAR1	HNGS Detector 1 Barite Constant	1
BAR2	HNGS Detector 2 Barite Constant	1
BHK	HNGS Borehole Potassium Correction Concentration	0
BHS	Borehole Status	OPEN
BKSF	HNGS Borehole Fluid Excluder Sleeve Algorithm Factor	1
BKSH	HNGS Borehole Fluid Excluder Sleeve Algorithm High Channel	245
BKSL	HNGS Borehole Fluid Excluder Sleeve Algorithm Low Channel	17
BS	Bit Size	9.875 IN
CSD1	Inner Casing Outer Diameter	0 IN
CSD2	Outer Casing Outer Diameter	0 IN
CSW1	Inner Casing Weight	0 LB/F
CSW2	Outer Casing Weight	0 LB/F
D1PR	HNGS Detector 1 Calibration Thorium Peak Resolution	7.79616 %
D1TC	HNGS Detector 1 Calibration Temperature	30.594 DEGC
D1TL	HNGS Detector 1 Calibration Thorium Peak Location	211.429
D2PR	HNGS Detector 2 Calibration Thorium Peak Resolution	6.70686 %
D2TC	HNGS Detector 2 Calibration Temperature	29.6607 DEGC
D2TL	HNGS Detector 2 Calibration Thorium Peak Location	210.041

DBCC	HNGS Barite Constant Correction Flag	NONE	
DFD	Drilling Fluid Density	1.10	G/C3
GCF1_START	HNGS Detector 1 GCF Constant	1	
GCF2_START	HNGS Detector 2 GCF Constant	1	
GCSE	Generalized Caliper Selection	LCAL	
H1P	HNGS Detector 1 Allow/Disallow In Processing	ALLOW	
H2P	HNGS Detector 2 Allow/Disallow In Processing	ALLOW	
HABK	HNGS Borehole Potassium Running Average	-0.00126851	
HALF	HNGS Alpha Filter Length	60	IN
HATIM	HNGS Marquardt Accumulation Time	600	S
HCRB	HNGS Apply Borehole Potassium Correction	NONE	
HMWM	Mud Weighting Material	NATU	
HNPE	HNGS Processing Enable	YES	
HSLV	HNGS Borehole Fluid Excluder Sleeve Status	NO	
HSVN	HNGS Spectral Standards Version Number	8.6664e-032	
MARQ_START	HNGS Marquardt Start-up Mode	INTERNAL	
RDF1_START	HNGS Detector 1 RDF Constant	0	
RDF2_START	HNGS Detector 2 RDF Constant	0	
S1BI	HNGS Detector 1 Calibration Bismuth Count Rate	1.3	CPS
S1NA	HNGS Detector 1 Calibration Sodium Count Rate	22.4203	CPS
S1NG	HNGS Detector 1 Calibration End-On / Side-On Gain Ratio	0.992953	
S2BI	HNGS Detector 2 Calibration Bismuth Count Rate	1.3	CPS
S2NA	HNGS Detector 2 Calibration Sodium Count Rate	22.621	CPS
S2NG	HNGS Detector 2 Calibration End-On / Side-On Gain Ratio	0.985234	
SABK	HNGS Statistical Uncertainty in Borehole Potassium Running Average	0.000173244	
SGRC	HNGS Standard Gamma-Ray Correction Flag	YES	
TPOS	Tool Position	ECCE	
VBA1	HNGS Detector 1 Variable Barite Factor Running Average	1.01629	
VBA2	HNGS Detector 2 Variable Barite Factor Running Average	0.9433	

Format: HNGSYields Vertical Scale: 1:200 Graphics File Created: 21-Feb-2001 18:55

OP System Version: 9C1-303

MCM

DIT-E	OP91-kp2	DTA-A	OP91-kp2
HLDS	OP91-kp2	NPLC-B	OP91-kp2
APS-BA	OP91-kp2	HNGS-BA	OP91-kp2
DTC-H	OP91-kp2		

Output DLIS Files

DEFAULT	DITE .004	FN:5	PRODUCER	21-Feb-2001 18:55
TCOMBO_CUST	DITE .004	FN:6	PRODUCER	21-Feb-2001 18:55

COMPANY: Lamont Doherty	BOTTOM LOG INTERVAL	742 m
	SCHLUMBERGER DEPTH	743 m
WELL: ODP Leg 194, Site 1199A	DEPTH DRILLER	746.5 m
FIELD: Marion Plateau	KELLY BUSHING	11.3 m
Country: Australia	DRILL FLOOR	11 m
Ocean: Pacific Ocean	GROUND LEVEL	-327 m

Schlumberger

Natural GR