



**DISCLAIMER**

THE USE OF AND RELIANCE UPON THIS RECORDED-DATA BY THE HEREIN NAMED COMPANY (AND ANY OF ITS AFFILIATES, PARTNERS, REPRESENTATIVES, AGENTS, CONSULTANTS AND EMPLOYEES) IS SUBJECT TO THE TERMS AND CONDITIONS AGREED UPON BETWEEN SCHLUMBERGER AND THE COMPANY, INCLUDING: (a) RESTRICTIONS ON USE OF THE RECORDED-DATA; (b) DISCLAIMERS AND WAIVERS OF WARRANTIES AND REPRESENTATIONS REGARDING COMPANY'S USE OF AND RELIANCE UPON THE RECORDED-DATA; AND (c) CUSTOMER'S FULL AND SOLE RESPONSIBILITY FOR ANY INFERENCE DRAWN OR DECISION MADE IN CONNECTION WITH THE USE OF THIS RECORDED-DATA.




OTHER SERVICES1 OS1: GHMT/NGTC OS2: DITE/HLDS/APS/HNGS OS3: OS4: OS5:	OTHER SERVICES2 OS1: OS2: OS3: OS4: OS5:
--	---

REMARKS: RUN NUMBER 1 Toolstring- MESTB/NGTC/DSI. WHC Used on this run. Seas calm. Log Measured in Meters Below Rig Floor (MBRF). Total Depth Driller- 3734.5 MBRF. Sea Floor Driller- 3111.7 MBRF. Total Depth Logger- 3489 MBRF. Sea Floor Logger- 3111 MBRF. Drill Pipe Logger- 3227 MBRF. Two passes were made.	REMARKS: RUN NUMBER 2
Could not get to total Depth due to obstruction.	

RUN 1			RUN 2		
SERVICE ORDER #:			SERVICE ORDER #:		
PROGRAM VERSION:		9C2-303	PROGRAM VERSION:		
FLUID LEVEL:			FLUID LEVEL:		
LOGGED INTERVAL	START	STOP	LOGGED INTERVAL	START	STOP

**EQUIPMENT DESCRIPTION**

RUN 1		RUN 2	
<b>SURFACE EQUIPMENT</b>			
GSR-U WITM (DTS)-A			

<b>DOWNHOLE EQUIPMENT</b>			
LEH-QT		33.28	
LEH-QT			
DTC-H	CTEM TelStatus ToolStatu		32.11
ECH-KC			31.48
AH-MCDT			31.48
AH-MCDT			



FMS\_NGS\_DSI\_020LUP FMS4 .DYNA [C118206]  
Horizontal Scale: 1 : 12.409  
Orientation North

FMS\_NGS\_DSI\_020LUP FMS4 .STAT [C118206]  
Horizontal Scale: 1 : 12.409  
Orientation North

C2 .CRC [A1179]  
6 (in) 16

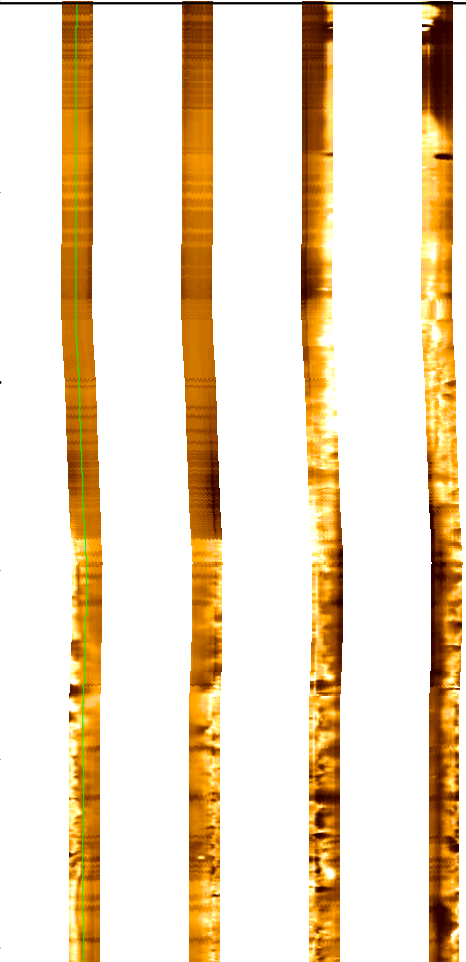
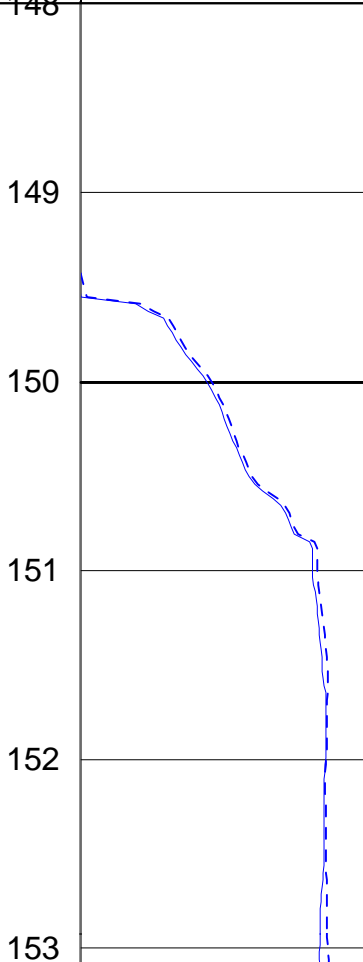
0 120 240 360

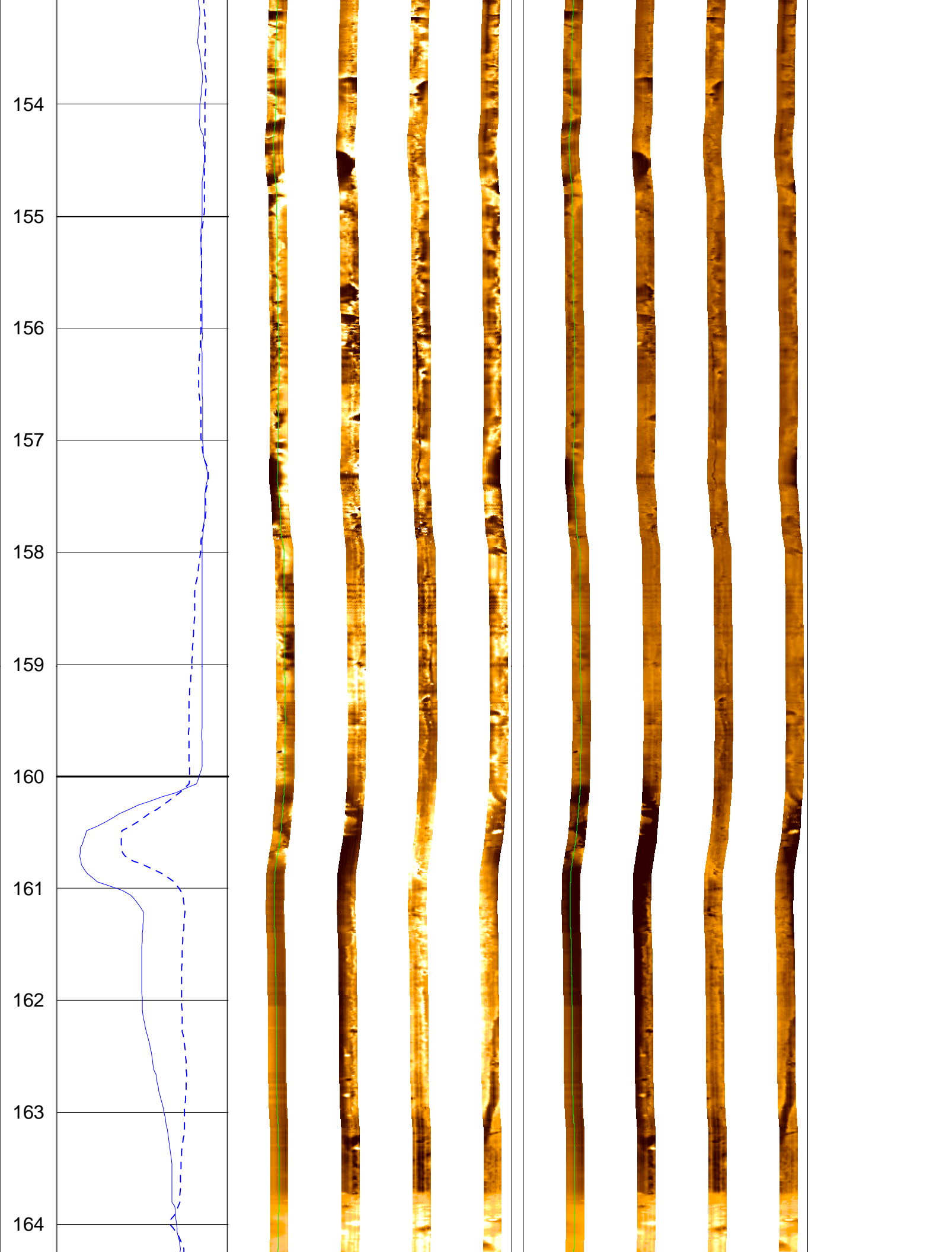
0 120 240 360

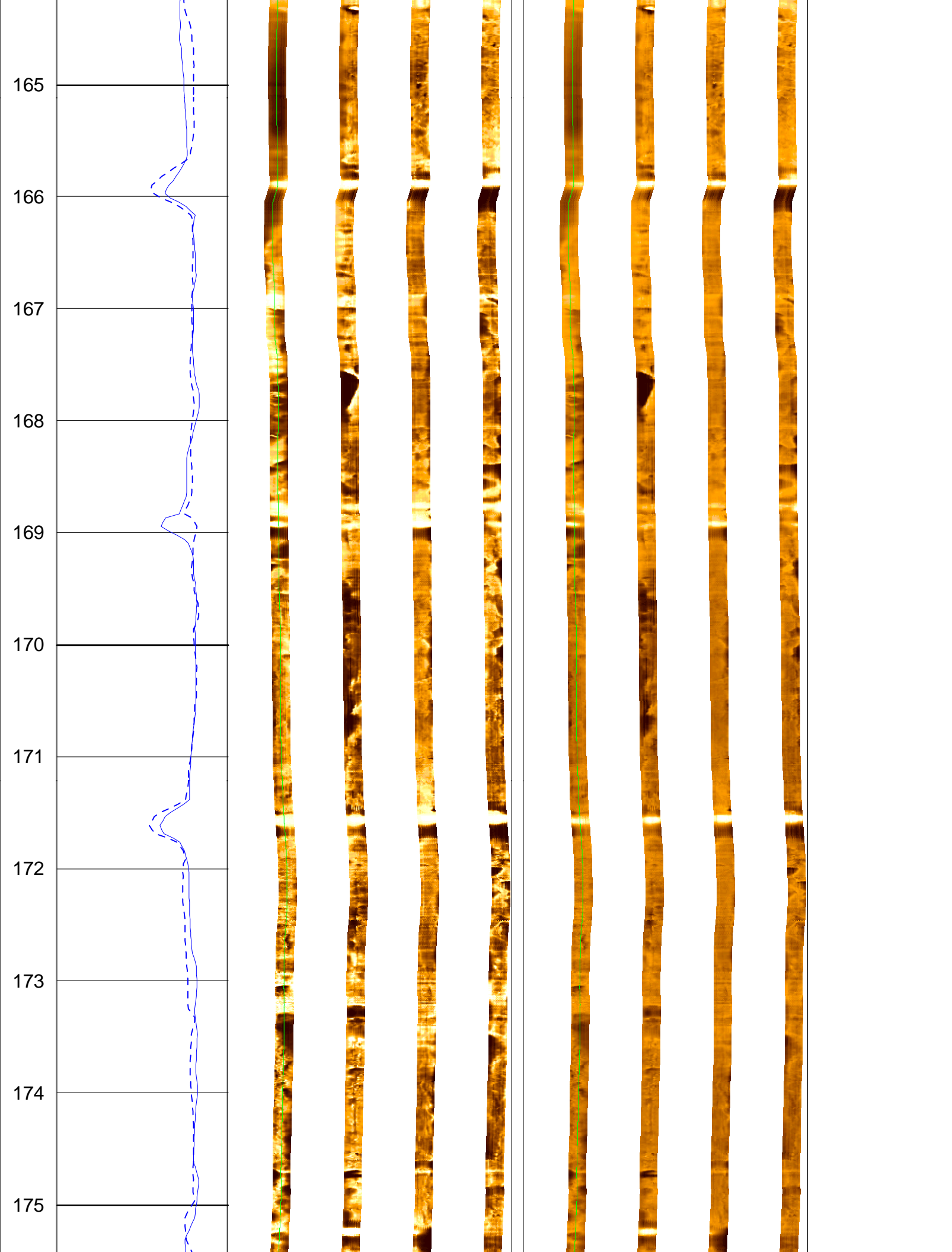
MD 1 : 40 m  
148  
C1 .CRC [A1179]  
6 (in) 16

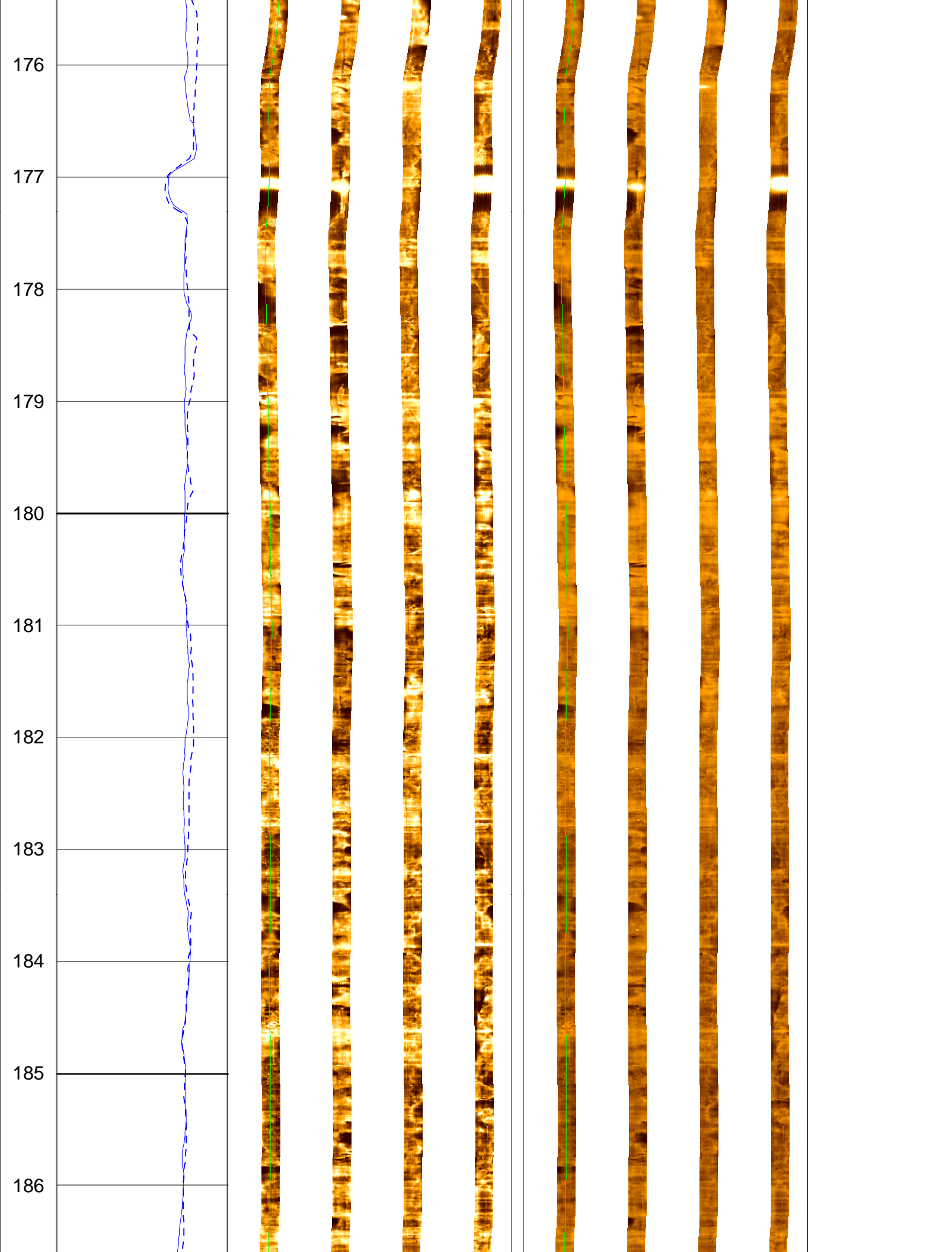
Resistive FMS4 Image Conductive

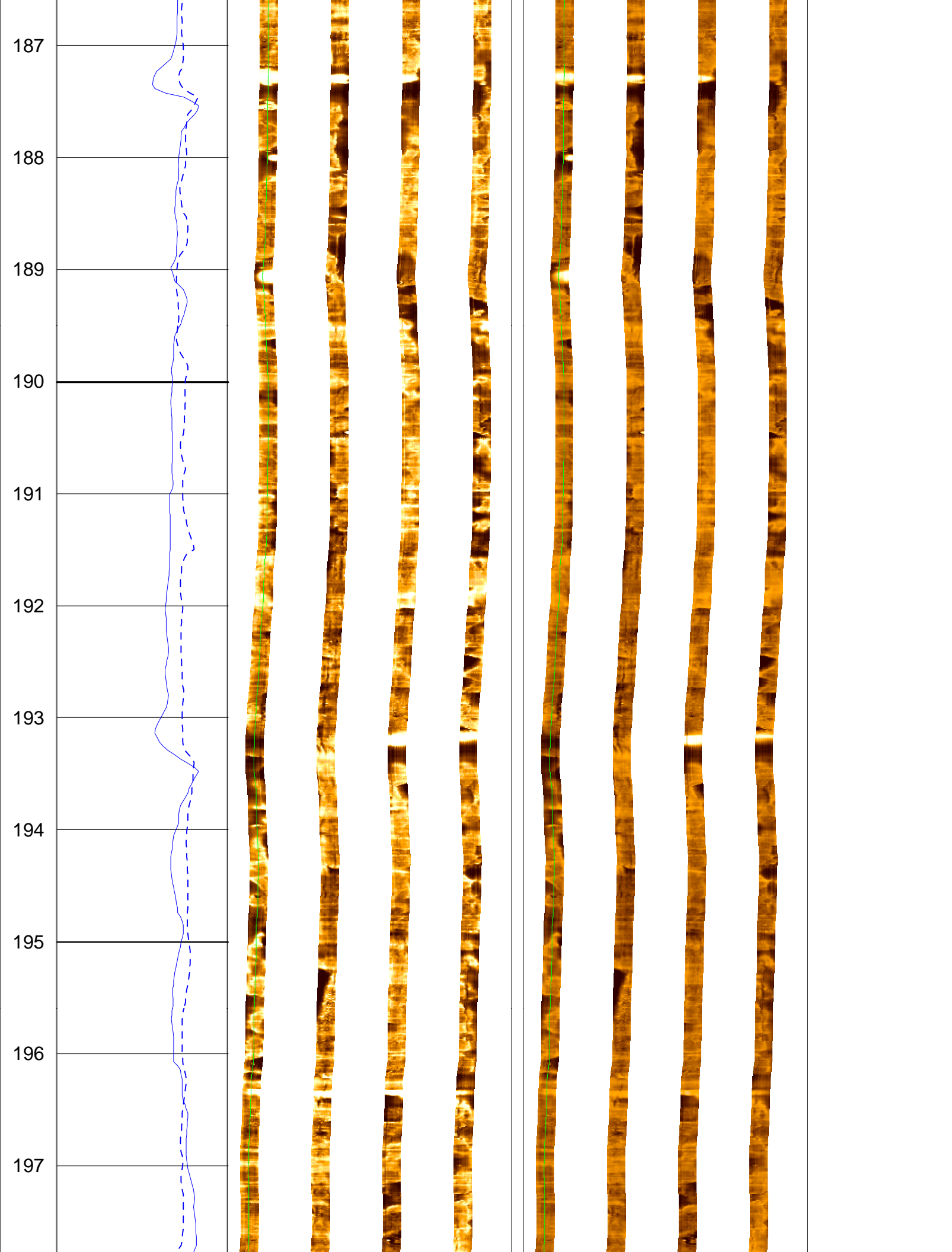
Resistive FMS4 Image Conductive



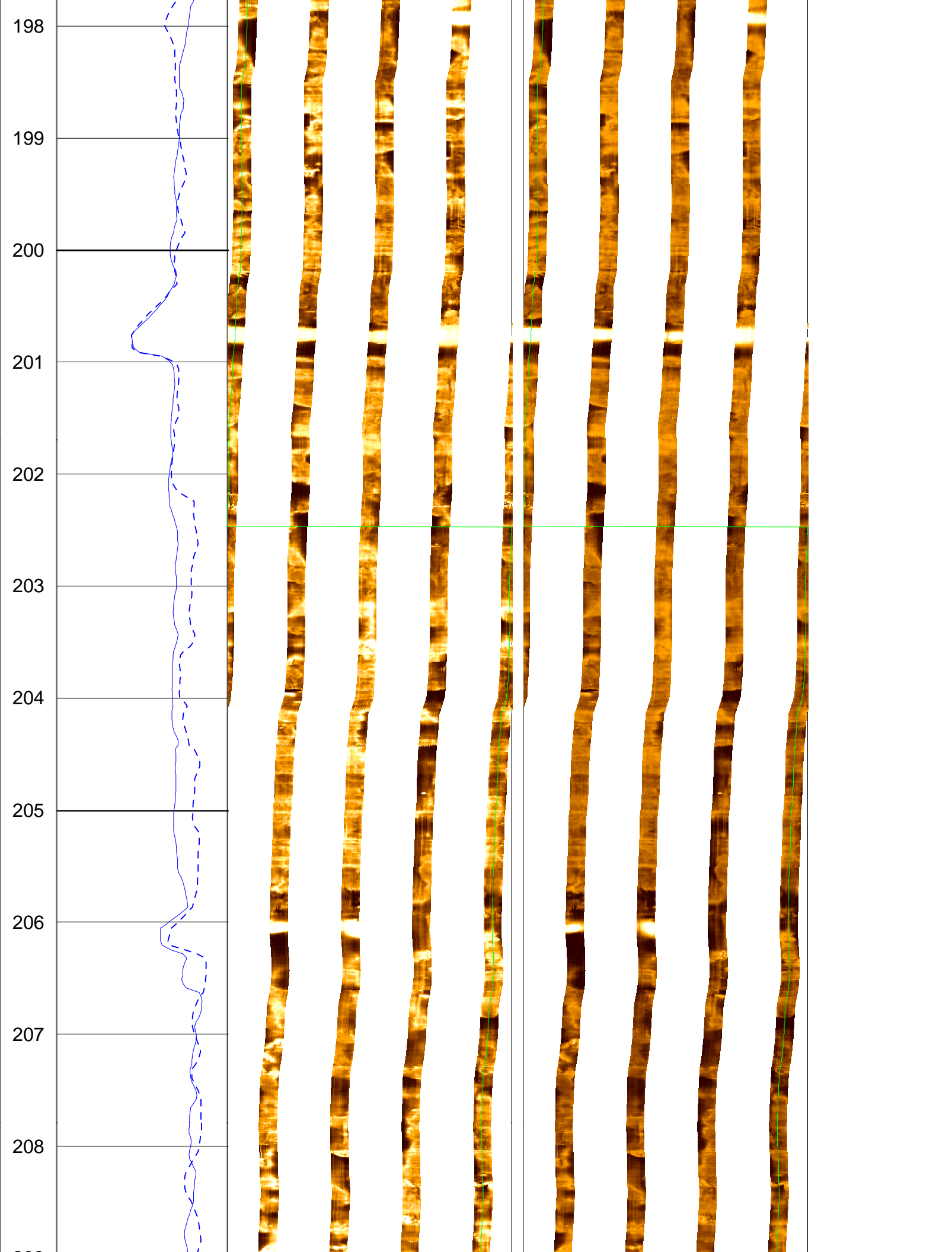


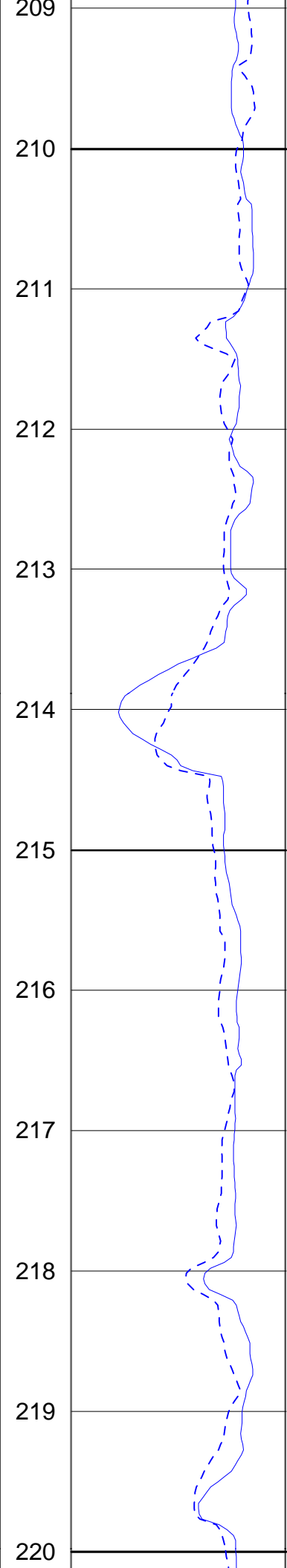


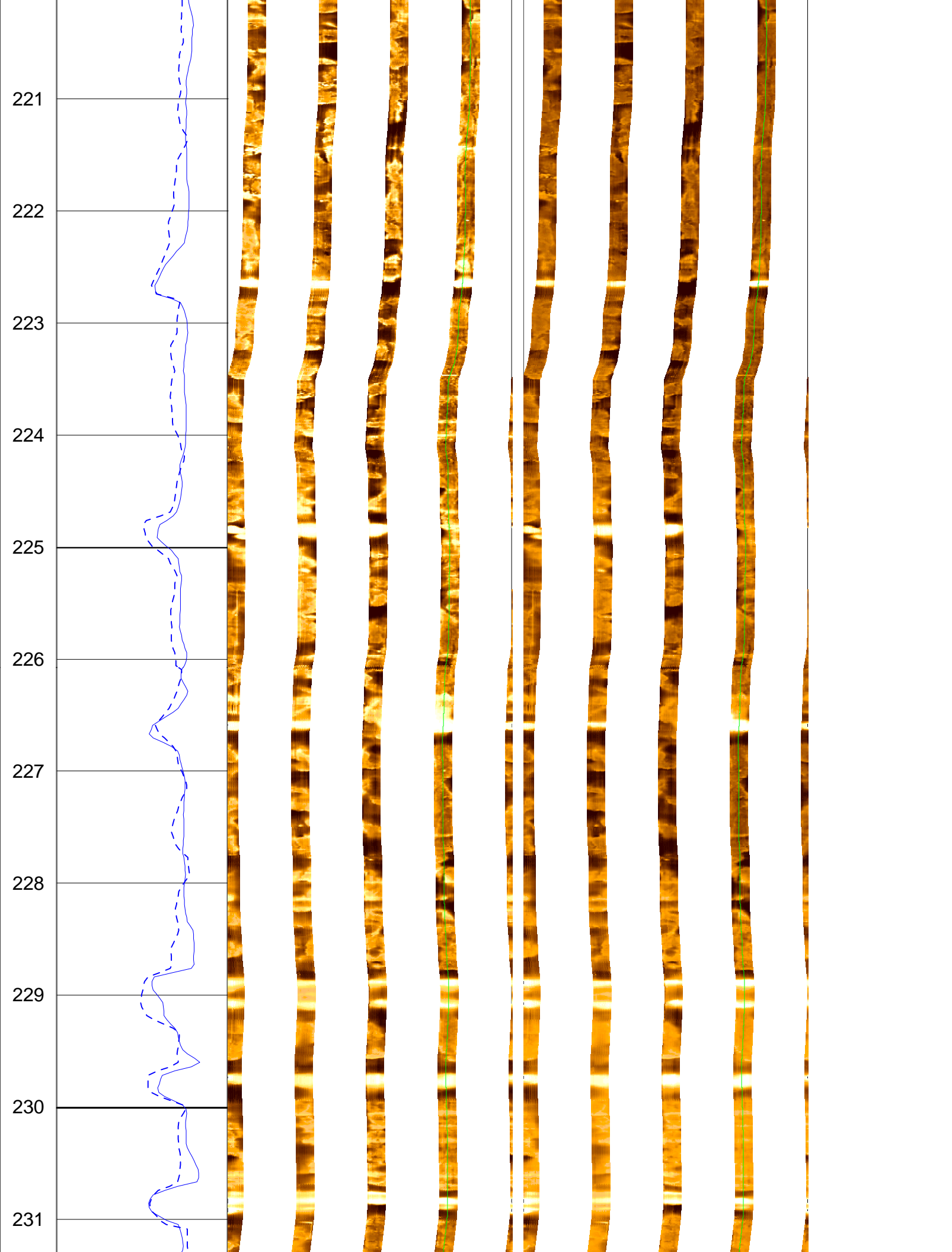


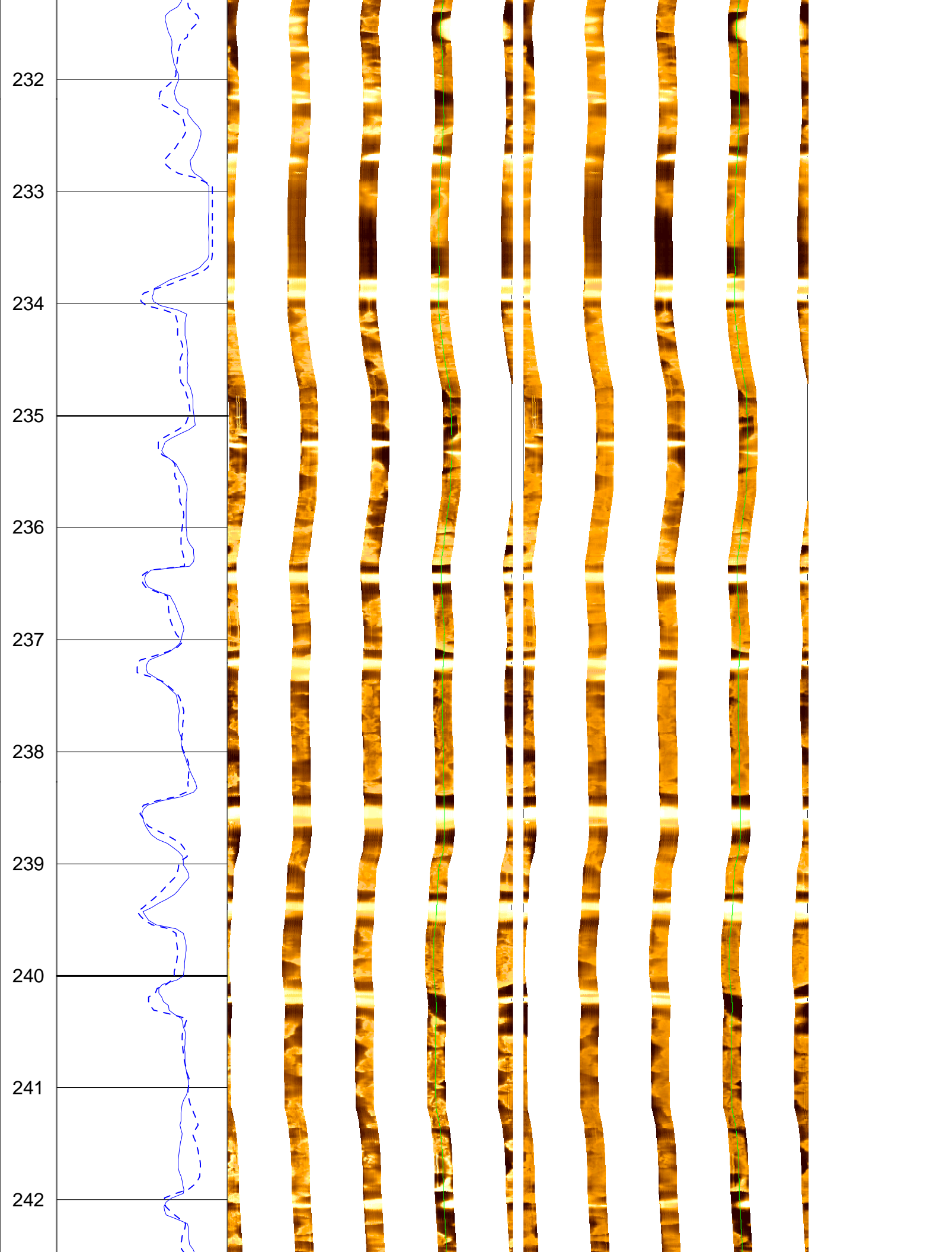


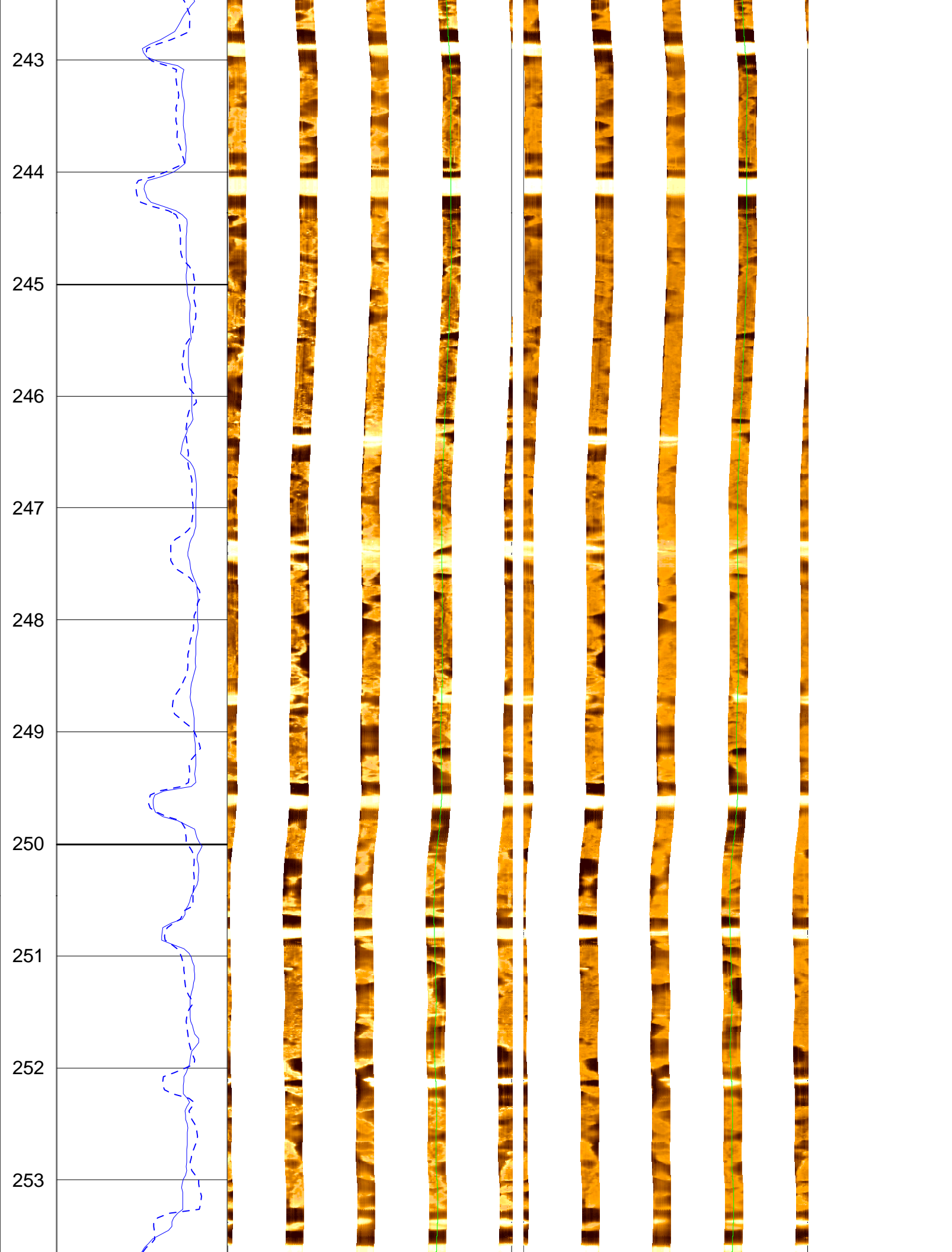


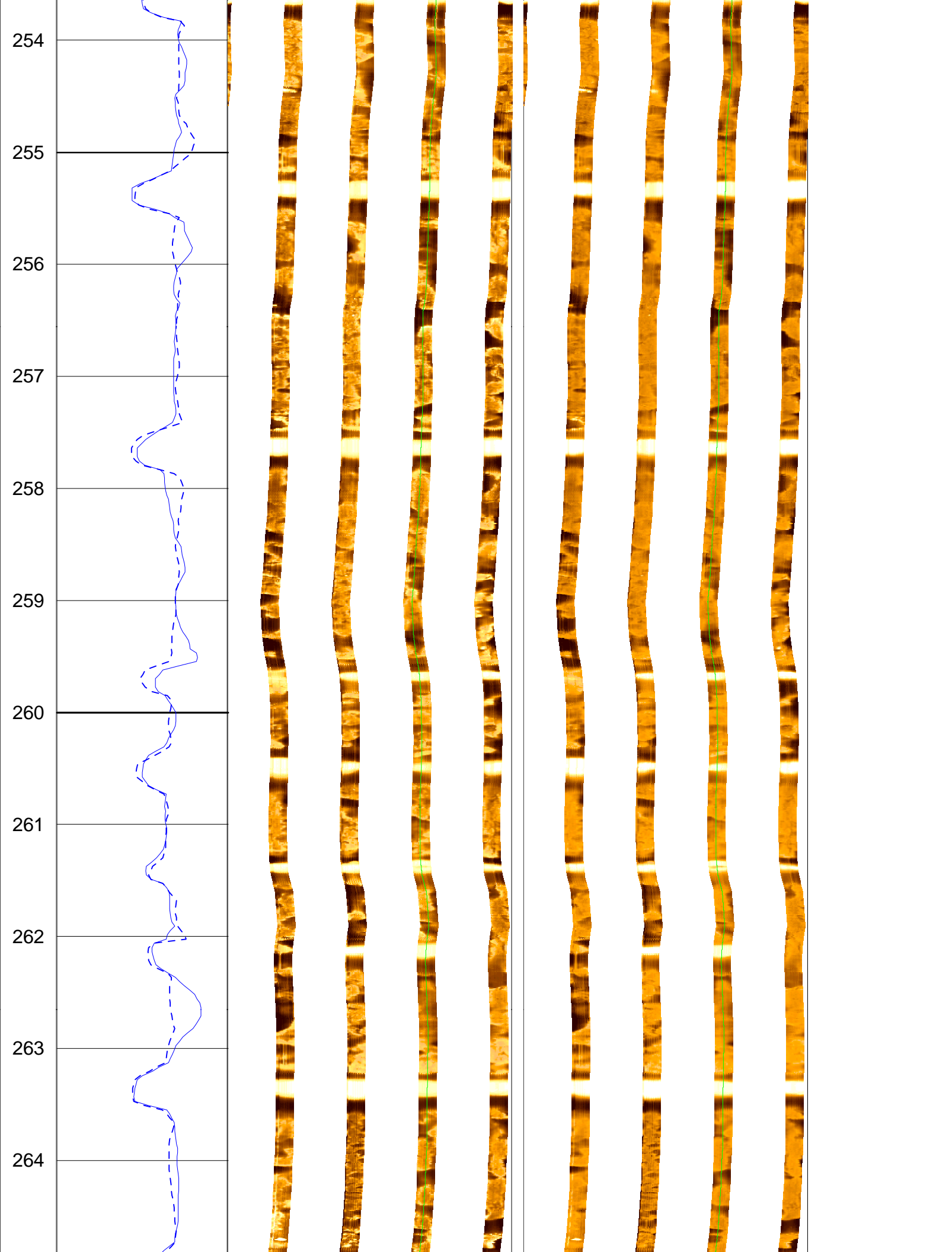


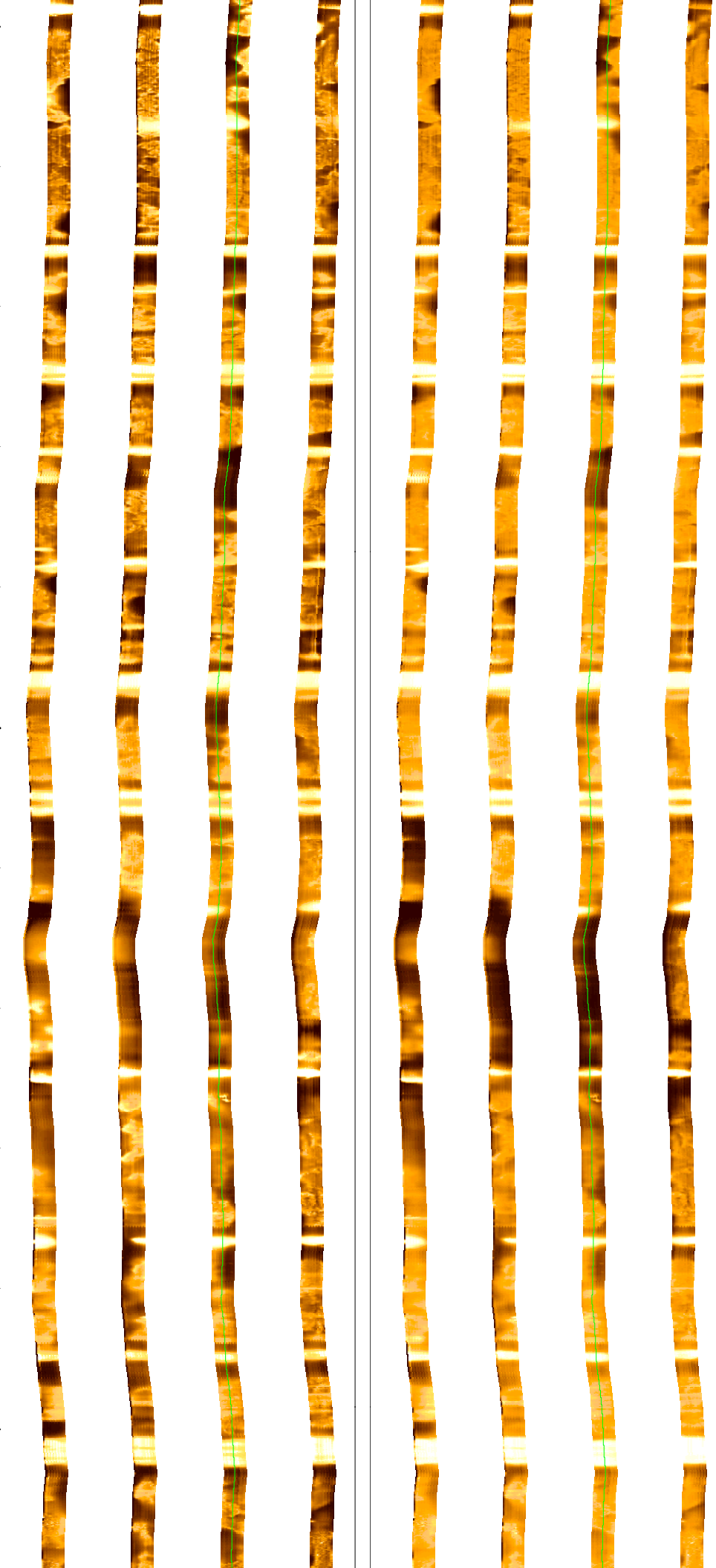
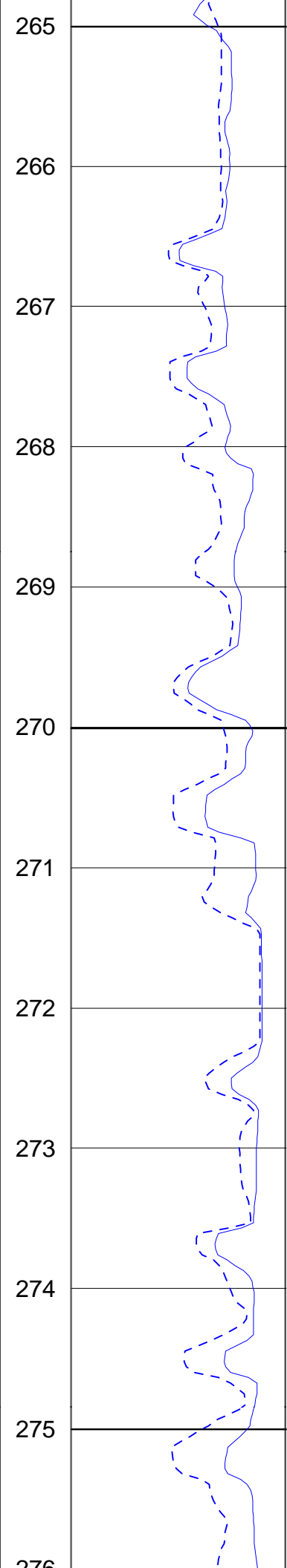


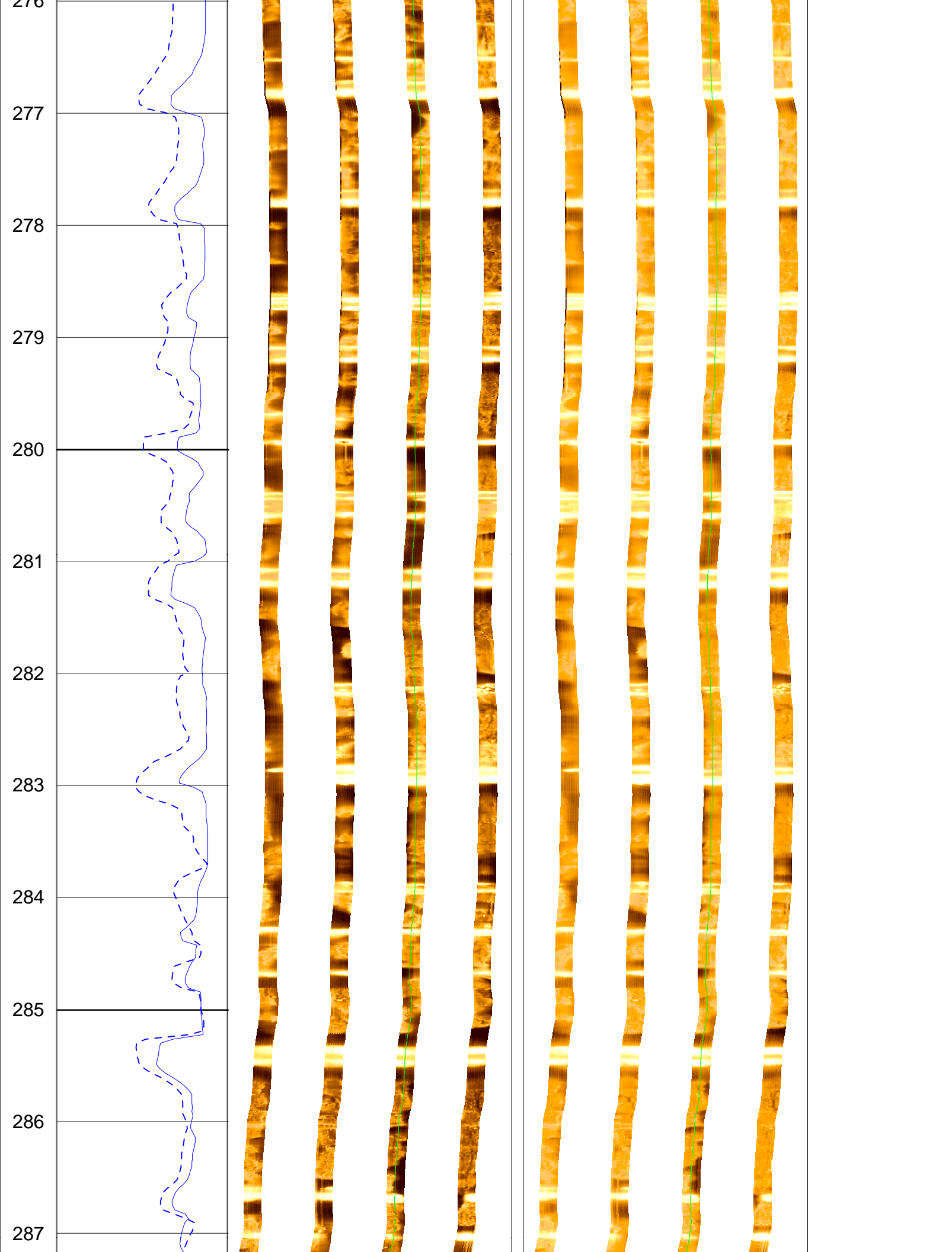




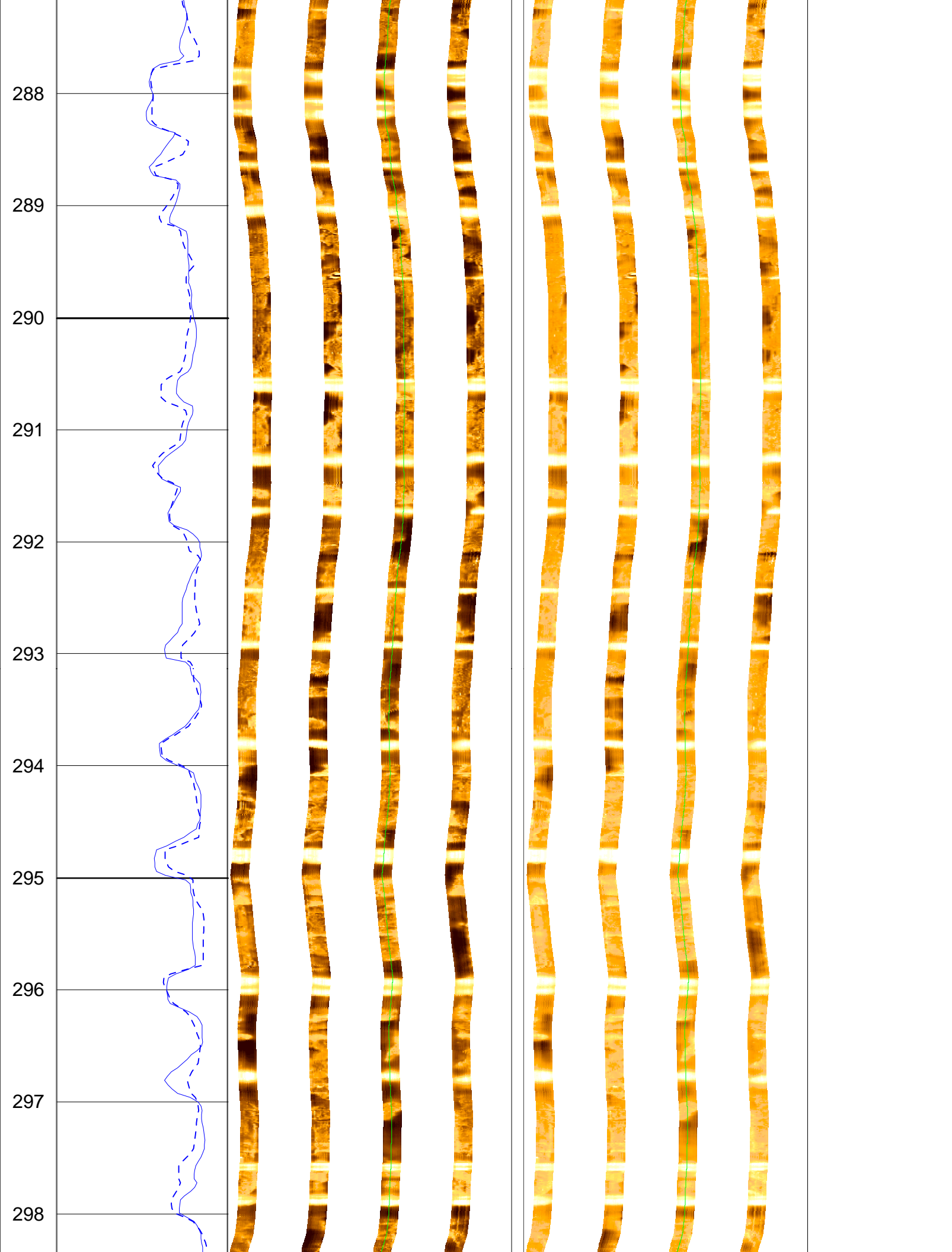


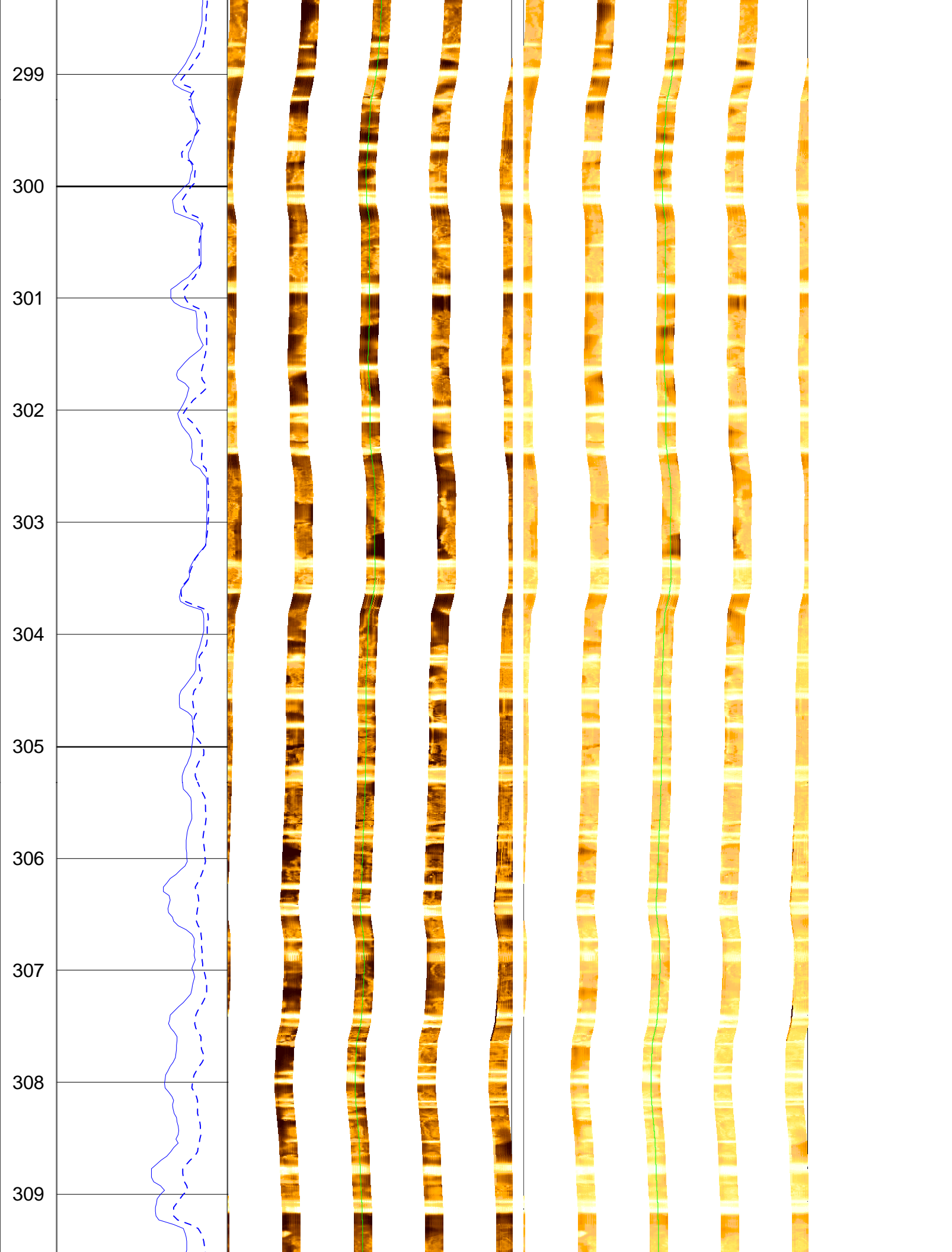


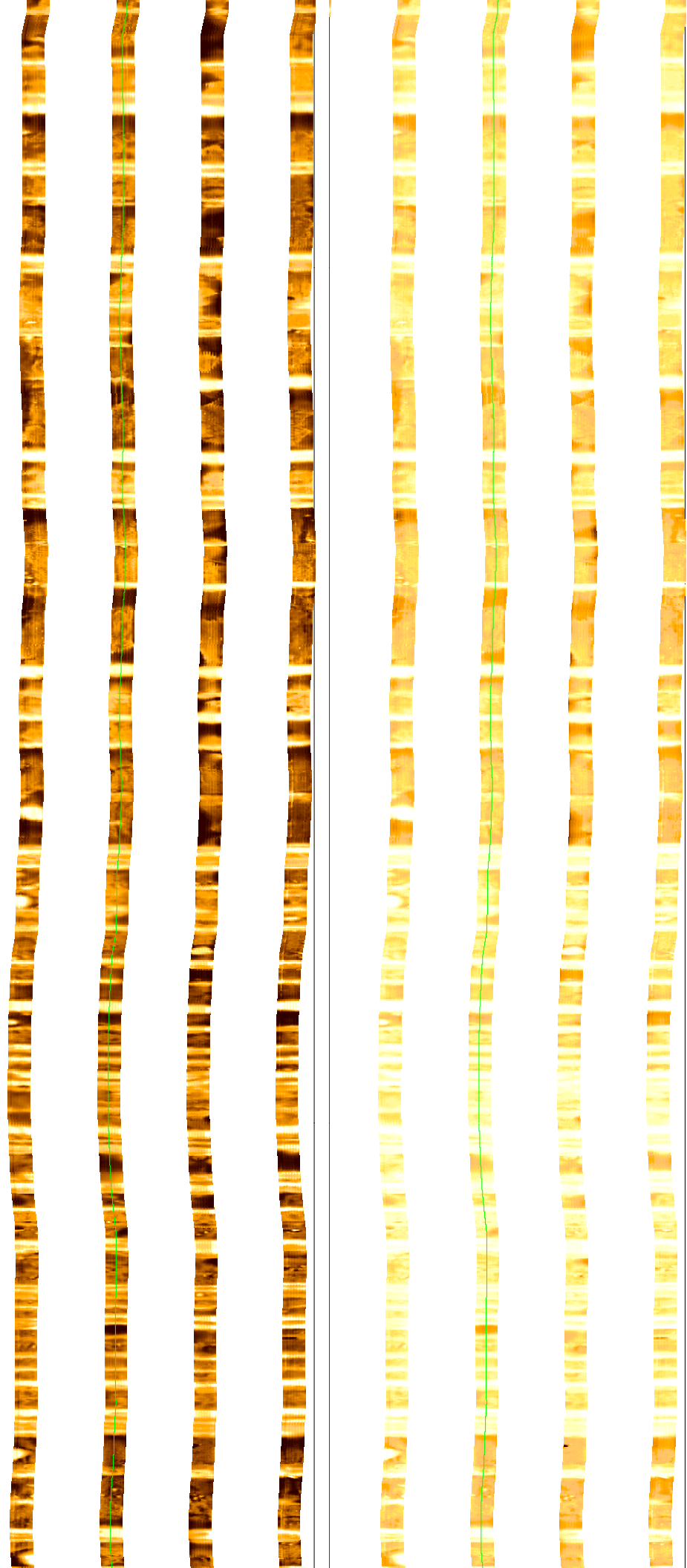
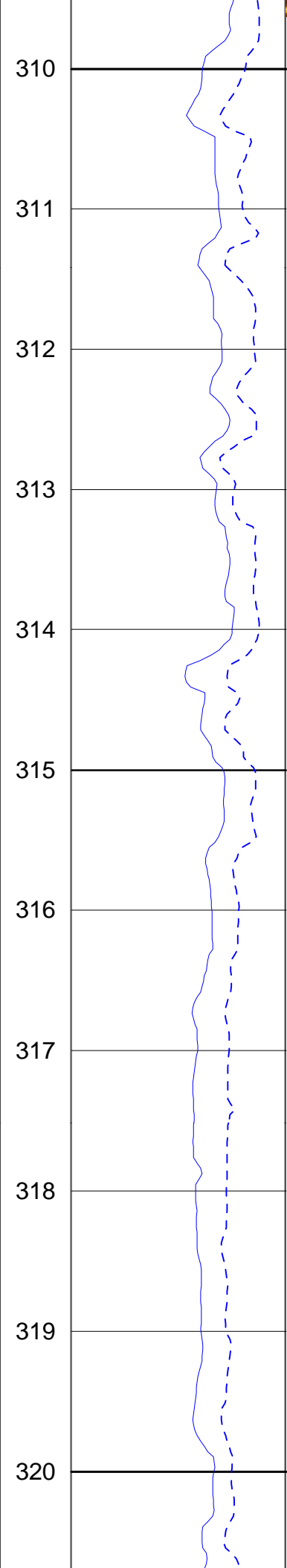


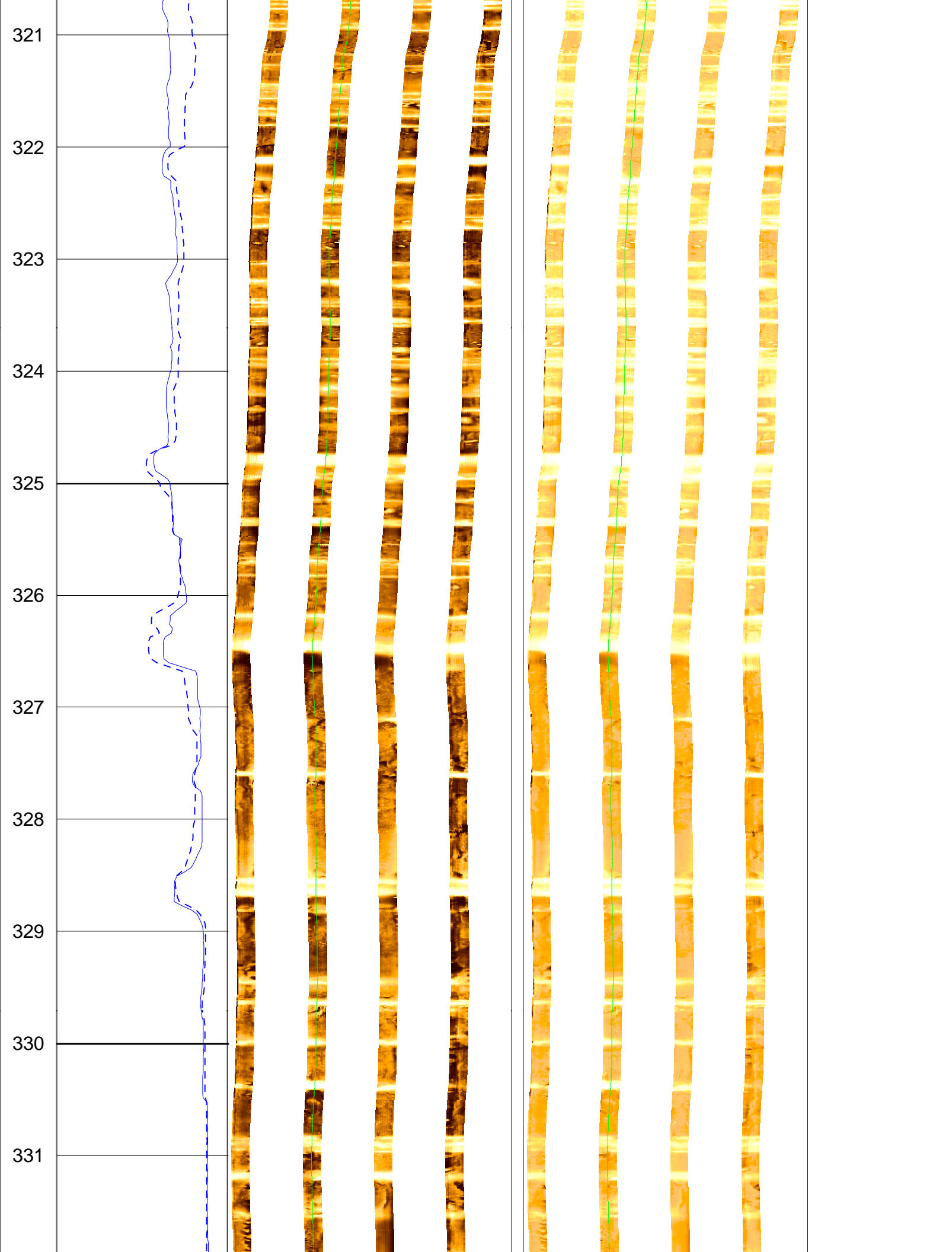


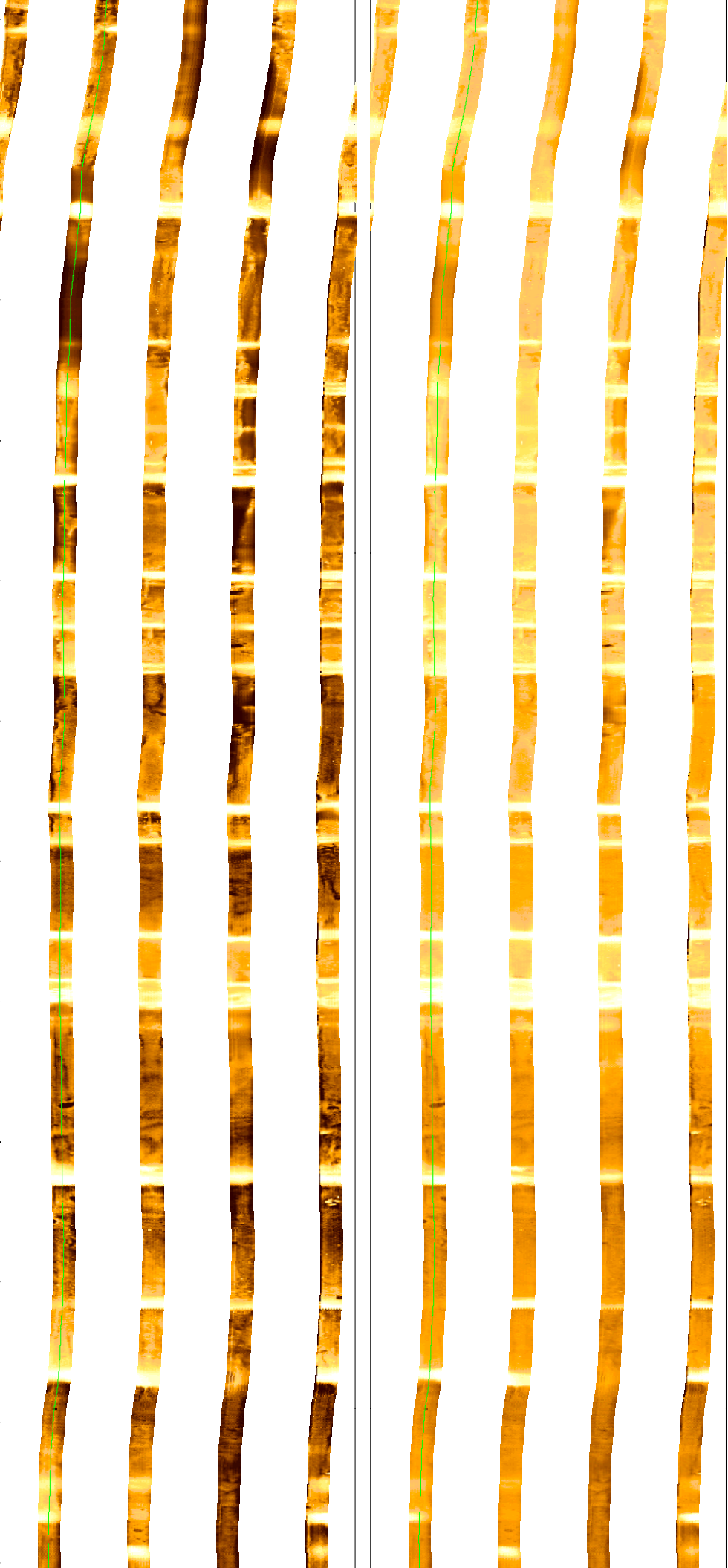
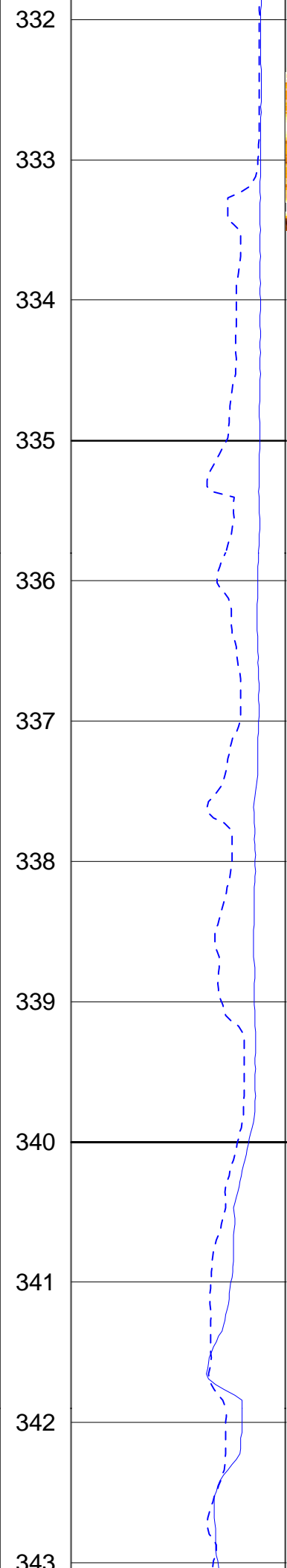


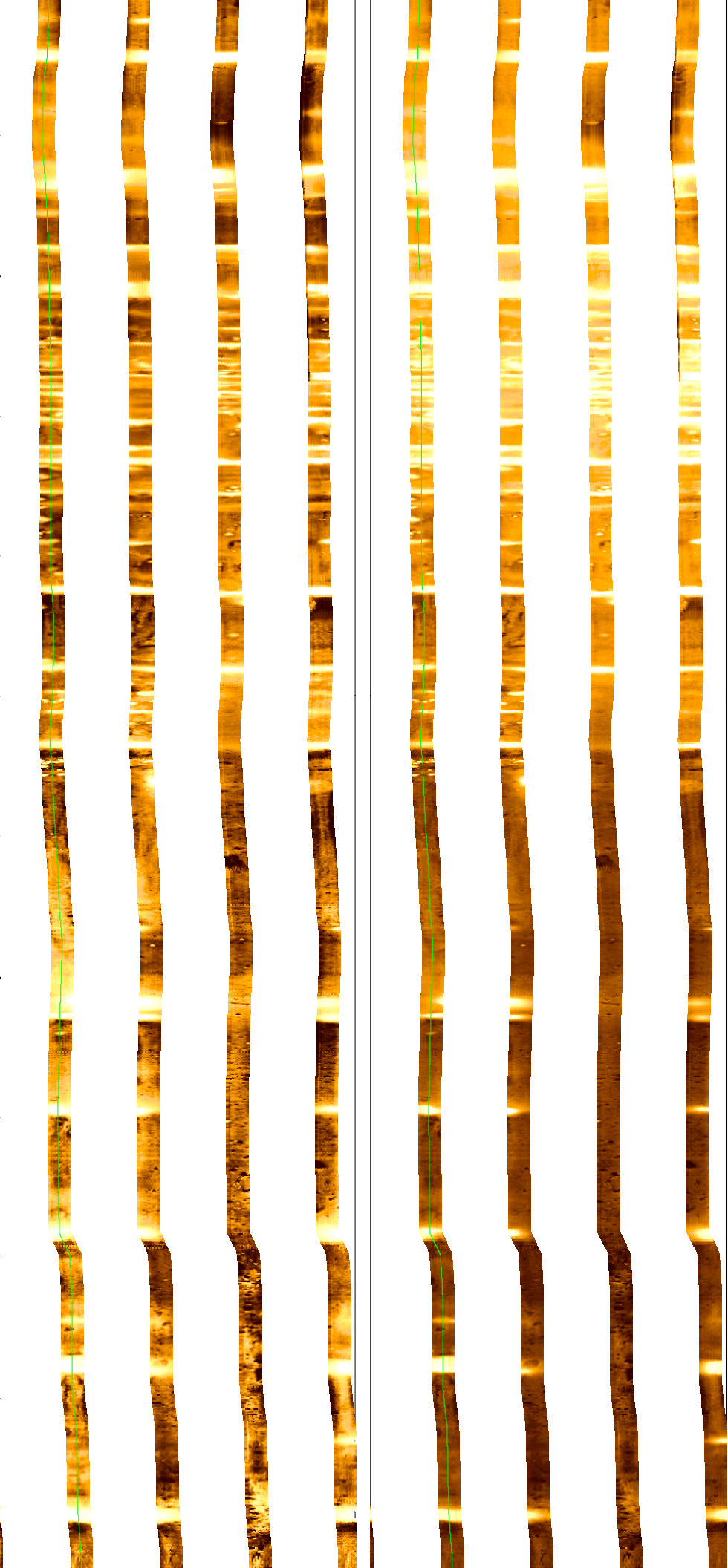
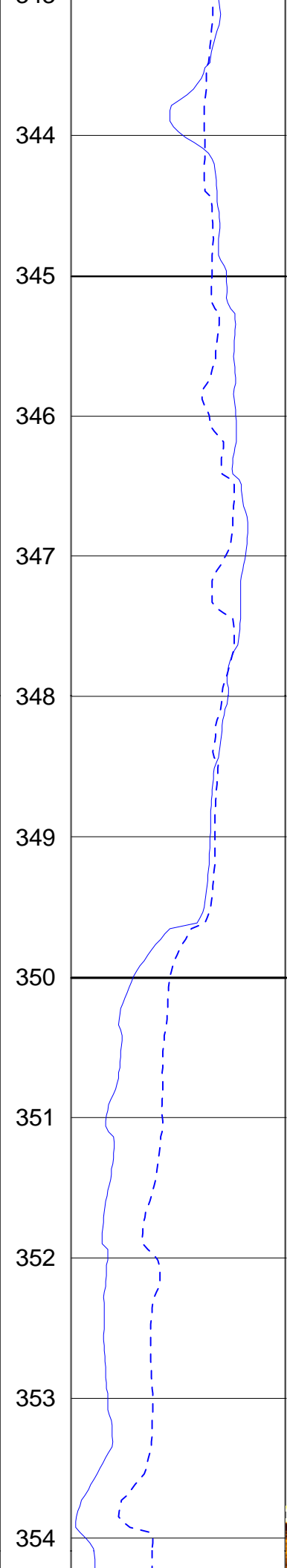


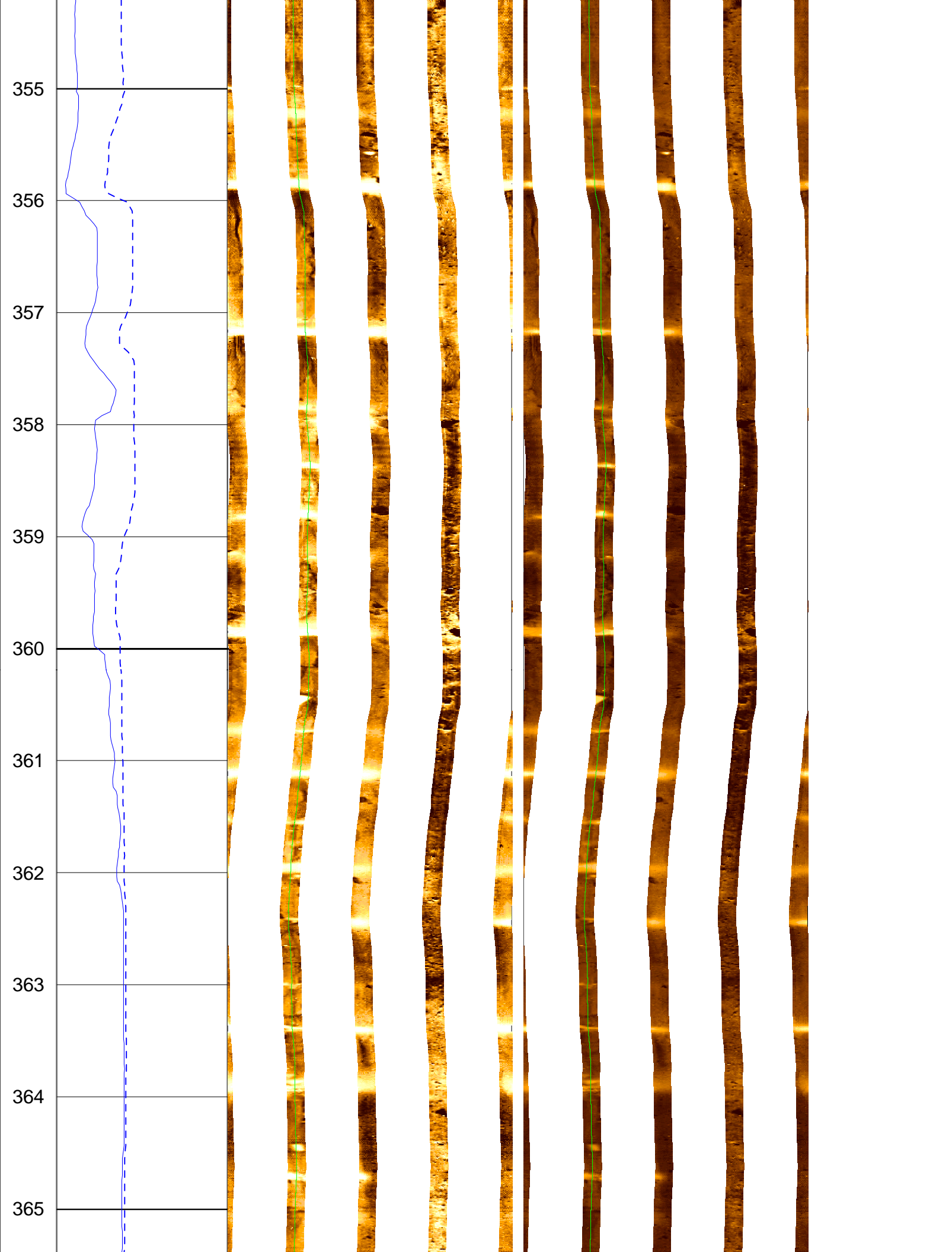


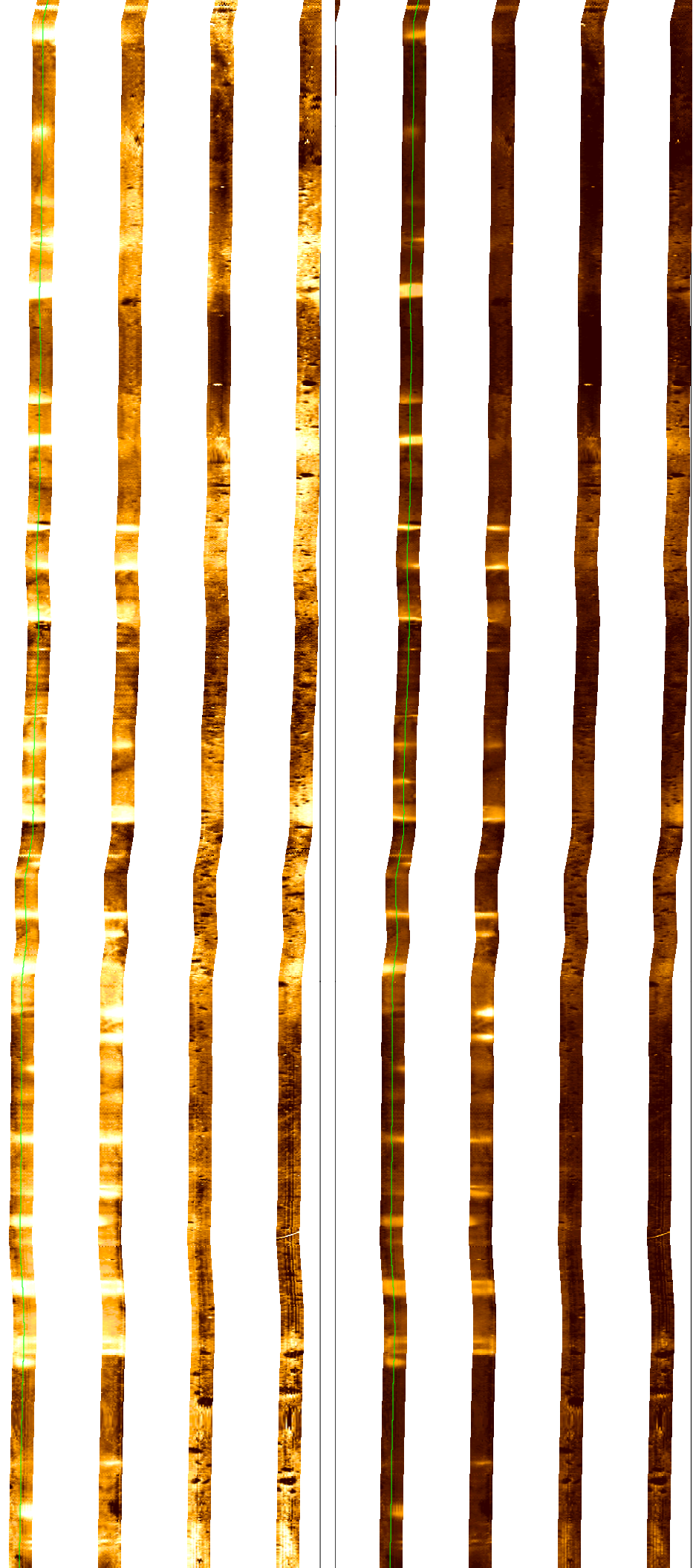
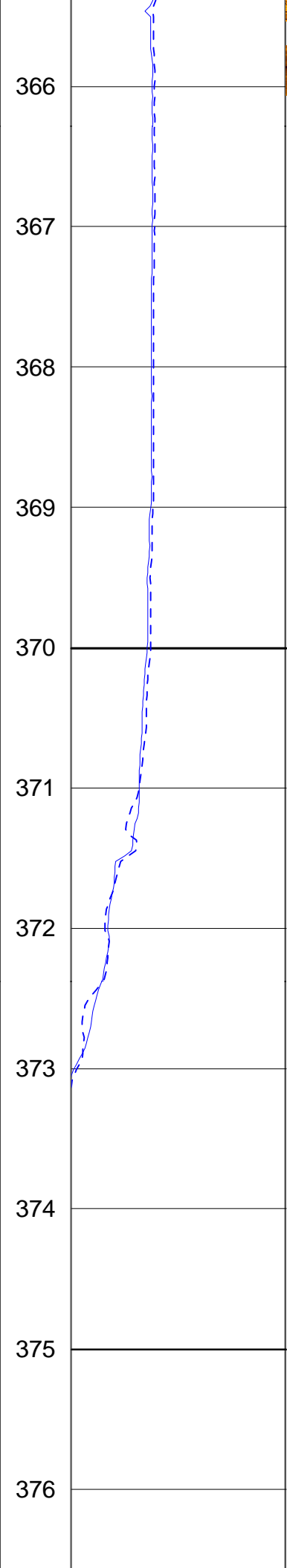




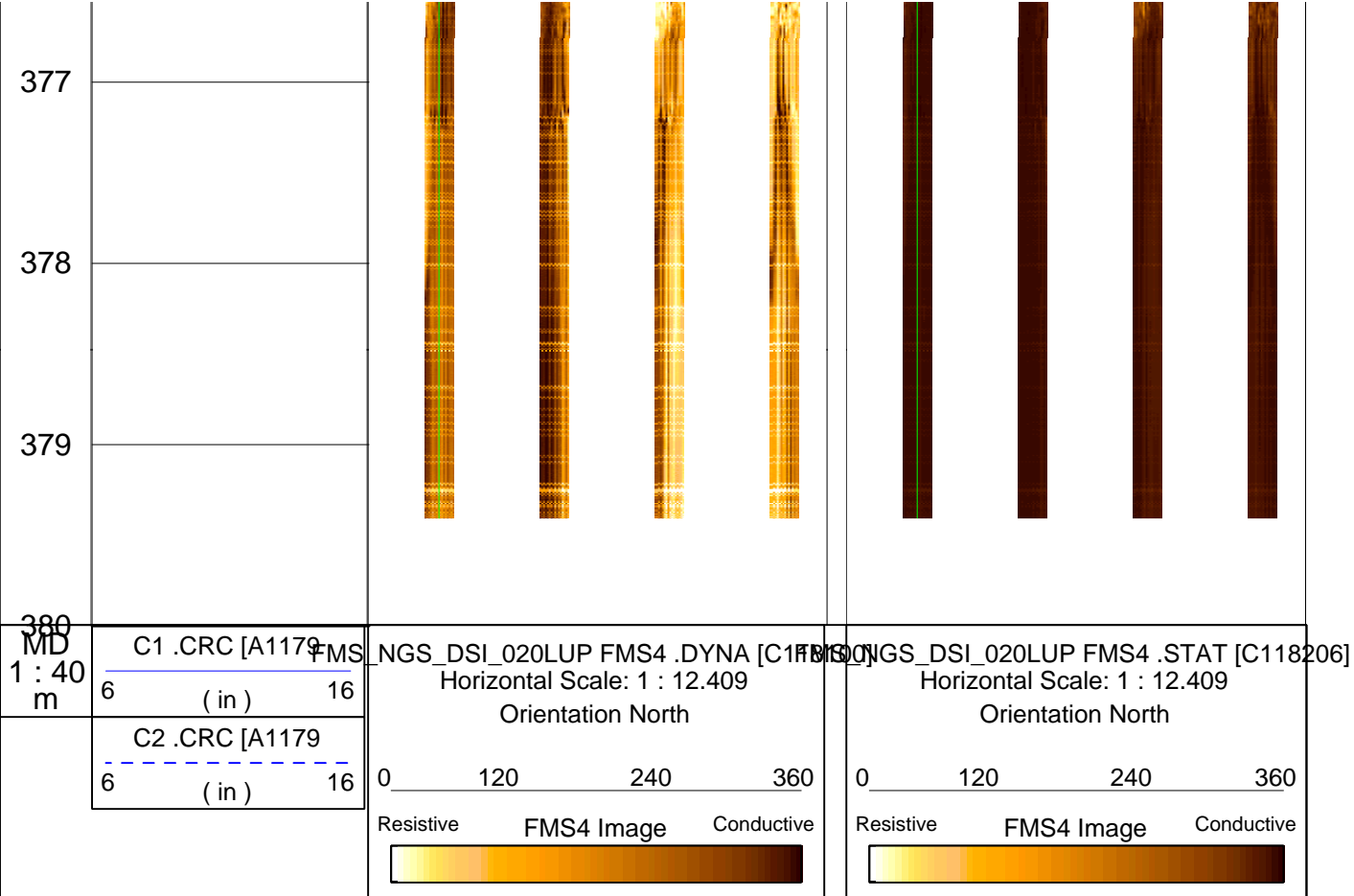












COMPANY:	Lamont Doherty	BOTTOM LOG INTERVAL	3488 m
		SCHLUMBERGER DEPTH	3489 m
WELL:	ODP Leg 198, Site 1207-B	DEPTH DRILLER	3734.5 m
FIELD:	Shatsky Rise	KELLY BUSHING	11.3 m
Country:	Japan	DRILL FLOOR	11 m
Ocean:	Pacific Ocean	GROUND LEVEL	-3111.7 m