

# FMS Hole 1230A

## Static Normalization

COMPANY: Lamont Doherty

WELL: ODP Leg 201, Site 1230A PRU-4A

FIELD: Peru Margin

Ocean: Pacific

COUNTRY:

Date Processed:                      Date Logged:                      16-Mar-2002

Job Number:                              Processed at:

Well Location:                      09 Deg 06.7529' S Latitude

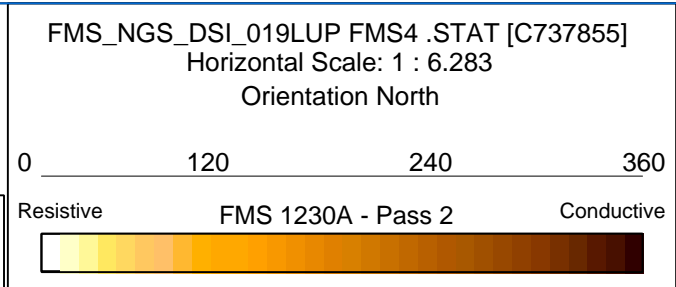
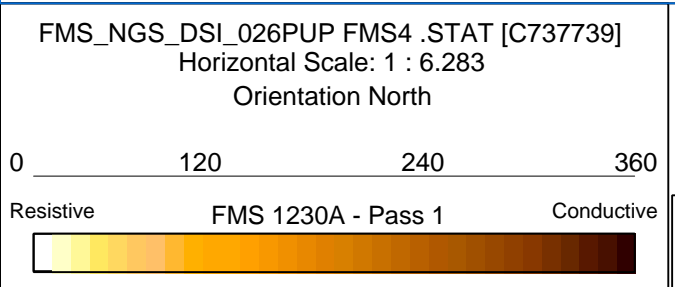
Latitude:                                  Longitude:

Elevations:                      KB: 11.3m                      DF: 11m                      GL: -5097m

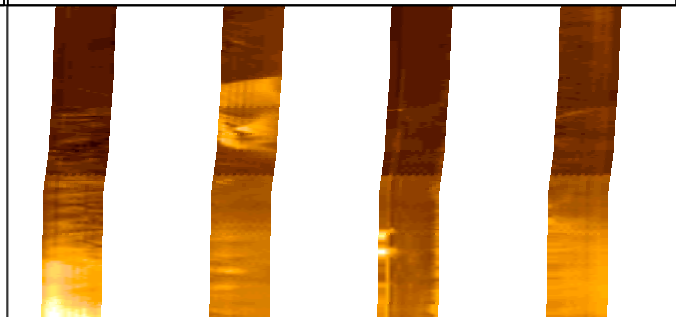
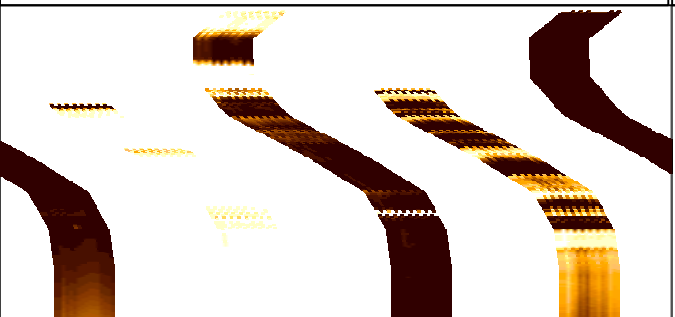
FMS Static Normalization

FOLD HERE                      The well name, location and borehole reference data were furnished by the customer.

All interpretations are opinions based on inferences from electrical or other measurements and we cannot, and do not guarantee the accuracy or correctness of any interpretation, and we shall not, except in the case of gross or willful negligence on our part, be liable or responsible for any loss, costs, damages or expenses incurred or sustained by anyone resulting from any interpretations made by any of our officers, agents or employees. These interpretations are also subject to Clause 4 of our General Terms and Conditions as set out in our current Price Schedule.

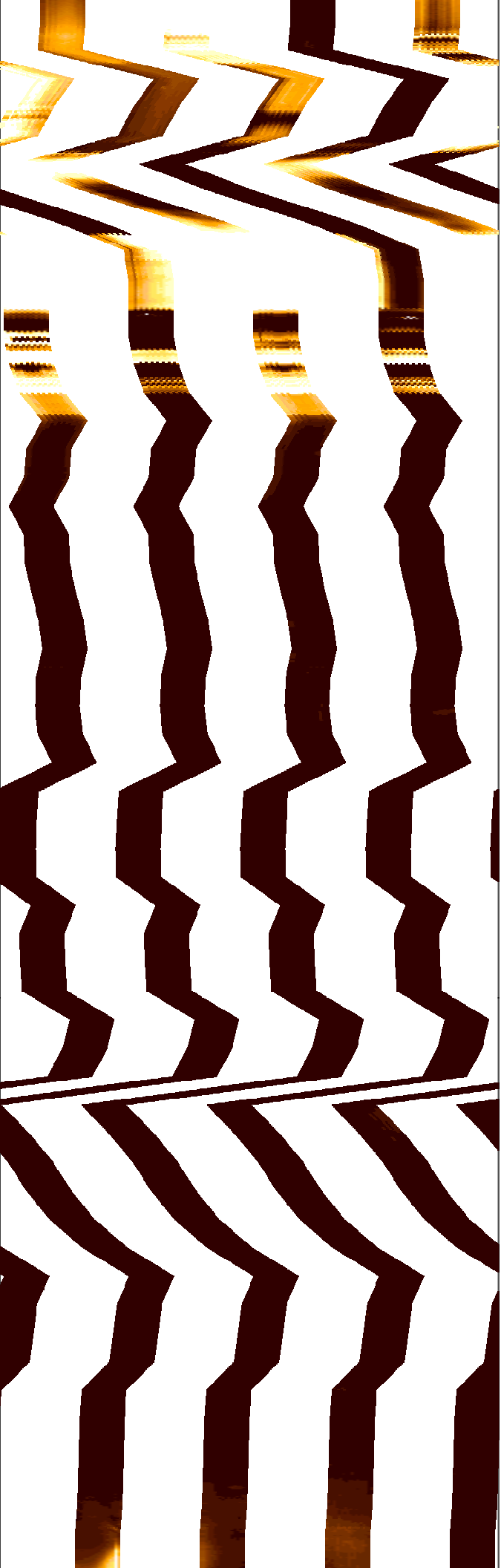


MD  
1 : 30  
m  
75



76





77

78

79

80

81

82

83

84





85

86

87

88

89

90

91

92

93



93

94

95

96

97

98

99

100

101

102

103

104

105

106

107

108

109



110

111

112

113

114

115

116

117

118





119

120

121

122

123

124

125

126







127

128

129

130

131

132

133

134



135

136

137

138

139

140

141

142

143





144

145

146

147

148

149

150



151



152

153

154

155

156

157

158

159

160

161

162

163

164

165

166

167

168



169

170

171

172

173

174

175

176





177

178

179

180

181

182

183

184

185



186

187

188

189

190

191

192

193



194

195

196

197

198

199

200

201



202

203

204

205

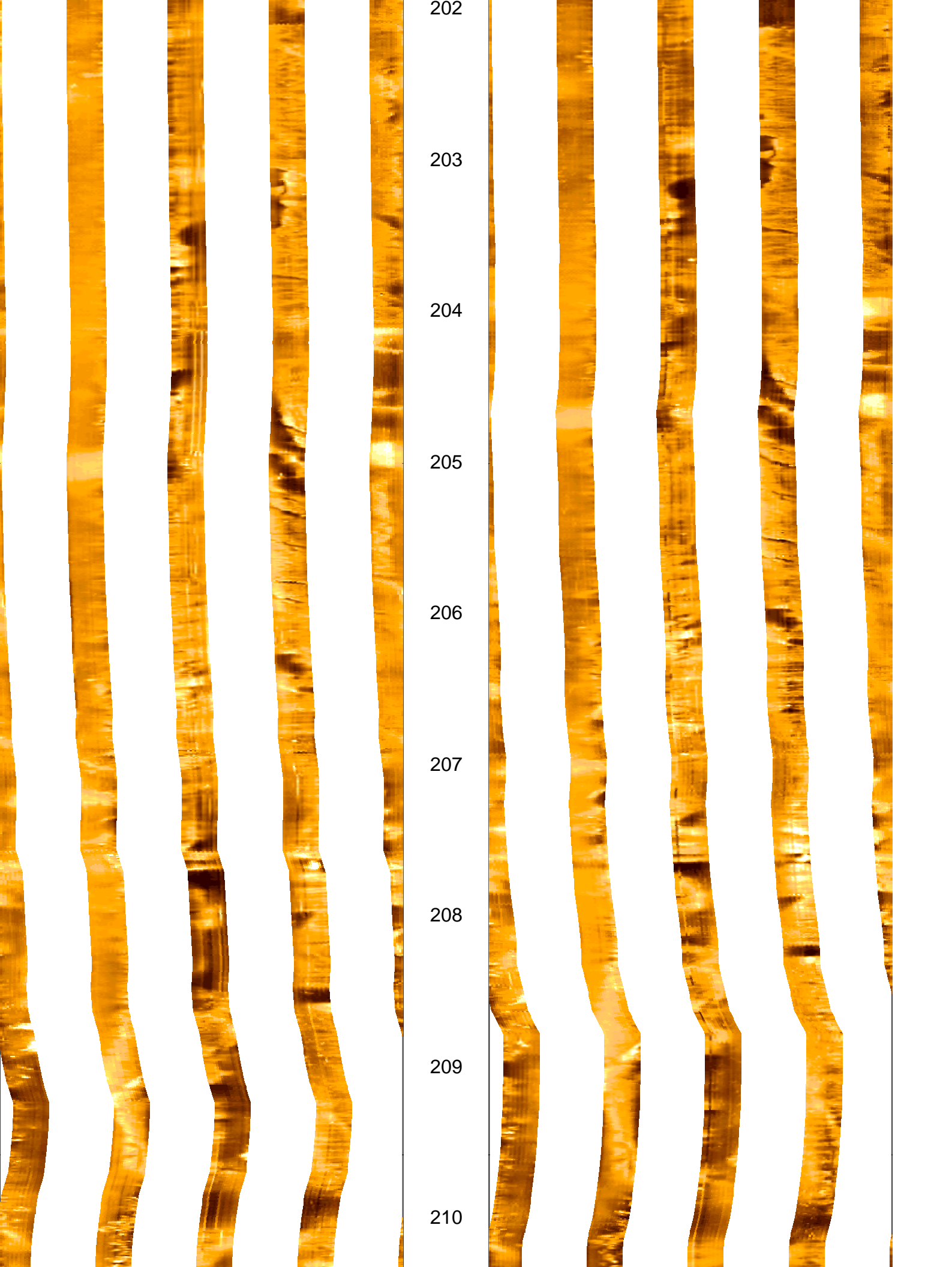
206

207

208

209

210







211

212

213

214

215

216

217

218



219

220

221

222

223

224

225

226

227



228

229

230

231

232

233

234

235



236

237

238

239

240

241

242

243



244

245

246

247

248

249

250

251

252





253

254

255

256

257

258

259

260





261

262

263

264

265

266

267

268

269

269

270

271

272

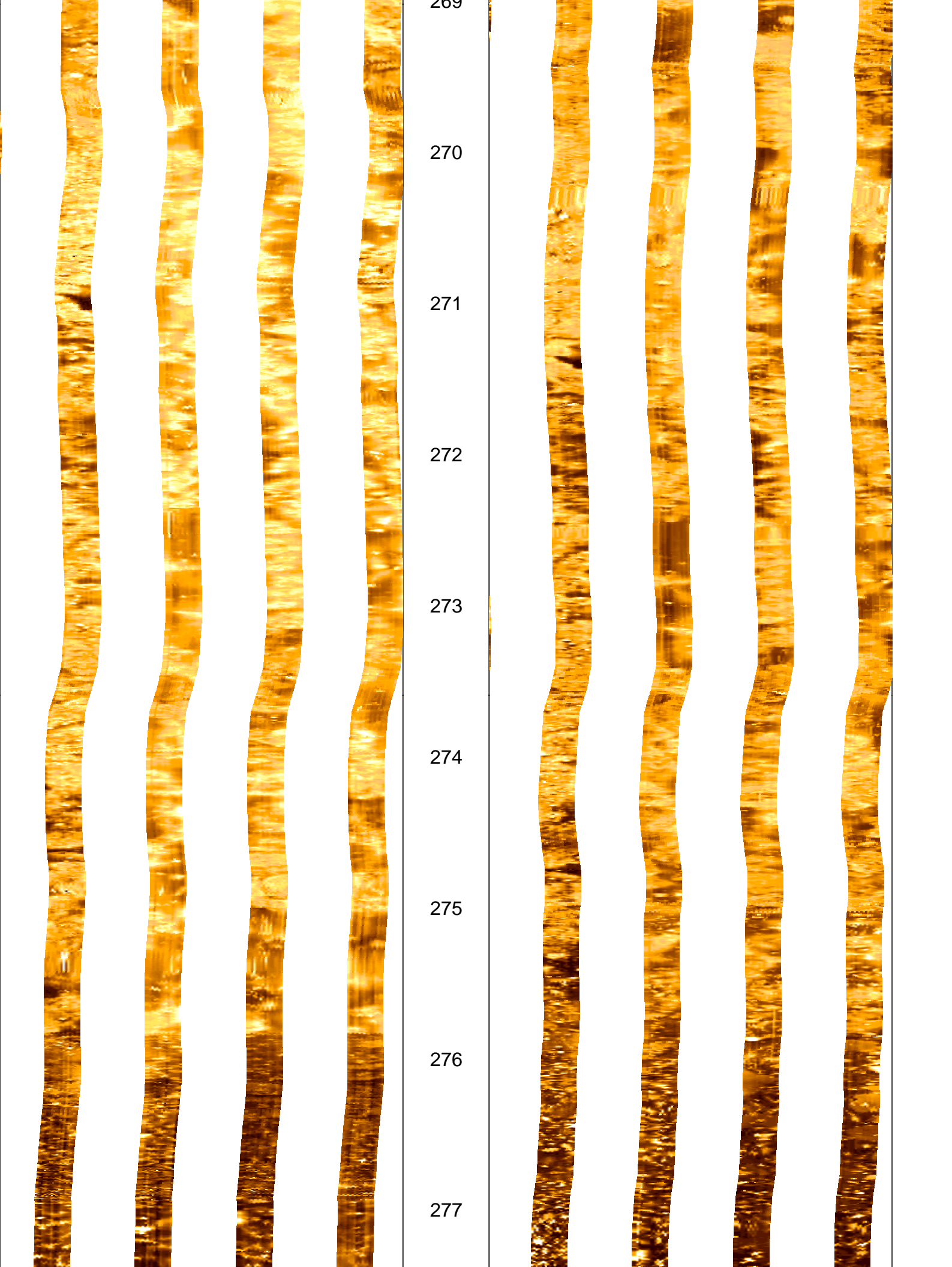
273

274

275

276

277







278

279

280