

DISCLAIMER

THE USE OF AND RELIANCE UPON THIS RECORDED-DATA BY THE HEREIN NAMED COMPANY (AND ANY OF ITS AFFILIATES, PARTNERS, REPRESENTATIVES, AGENTS, CONSULTANTS AND EMPLOYEES) IS SUBJECT TO THE TERMS AND CONDITIONS AGREED UPON BETWEEN SCHLUMBERGER AND THE COMPANY, INCLUDING: (a) RESTRICTIONS ON USE OF THE RECORDED-DATA; (b) DISCLAIMERS AND WAIVERS OF WARRANTIES AND REPRESENTATIONS REGARDING COMPANY'S USE OF AND RELIANCE UPON THE RECORDED-DATA; AND (c) CUSTOMER'S FULL AND SOLE RESPONSIBILITY FOR ANY INFERENCE DRAWN OR DECISION MADE IN CONNECTION WITH THE USE OF THIS RECORDED-DATA.




OTHER SERVICES1 OS1: DITE/HLDS/APS/HNGS OS2: FMS OS3: WST OS4: OS5:	OTHER SERVICES2 OS1: OS2: OS3: OS4: OS5:
--	---

REMARKS: RUN NUMBER 1 Hole cored with RCB. Sea Floor at 3968 mbrf per HLDS density curve. Log measured in meters below rig floor. Lamont temperature tool was run but no data was recovered so no official bottom hole temperature is given. Wireline heave compensator used on all runs. Sepiolite mud was used to displace the hole. Driller TD=4063mbrf Schlumberger TD=4049mbrf Drill pipe Schlumberger=3950mbrf.	REMARKS: RUN NUMBER 2
--	-----------------------

RUN 1			RUN 2		
SERVICE ORDER #:			SERVICE ORDER #:		
PROGRAM VERSION:		10C0-306	PROGRAM VERSION:		
FLUID LEVEL:			FLUID LEVEL:		
LOGGED INTERVAL	START	STOP	LOGGED INTERVAL	START	STOP

EQUIPMENT DESCRIPTION

RUN 1		RUN 2	
SURFACE EQUIPMENT			
GSR-U/Y 135 WITM (DTS)-A			

DOWNHOLE EQUIPMENT			
LEH-QT			32.33
LEH-QT			
DTC-H	CTEM		31.16
ECH-KC 9343	TelStatus		31.44
	ToolStatu		30.53
SGT-N	Gamma Ray		30.25
SGH-K 245			30.53

SGC-TB 9585
SGD-TAA

AH-MCD-top
AH-MCD-top

28.85

DSST-B
SPAC-B 9128
ECH-SD 8127
SMDR-BD 11
SSIJ-BA 8069
SMDX-AA 66

26.57

PWF — 11.02

AH-MCD-Bot
AH-MCD-Bot

11.02

DTA-A
ECH-KE 8455
DTA-A 8261

8.90

MEST-B
MEAH-B 701
MEAC-A 833
MEPH-A 702
GPIC-A 719
MEPC-AB 806
MEDS-B 724

7.68

MEDR MEAC
MEPC MEDS-B
HV DF
Tension GPIT
TOOL ZERO

0.46

0.00

MAXIMUM STRING DIAMETER 3.63 IN
MEASUREMENTS RELATIVE TO TOOL ZERO
ALL LENGTHS IN METERS

Input DLIS Files

DEFAULT	FMS_DSI_016LUP	FN:23	PRODUCER	24-Jun-2002 04:12	4050.2 M	3834.8 M
---------	----------------	-------	----------	-------------------	----------	----------

Output DLIS Files

DEFAULT	FMS_DSI_030PUP	FN:43	PRODUCER	27-Jun-2002 01:09	4050.2 M	3835.3 M
RED2	FMS_DSI_030PUP	FN:44	PRODUCER	27-Jun-2002 01:09	4050.2 M	3835.3 M

OP System Version: 10C0-306

MCM

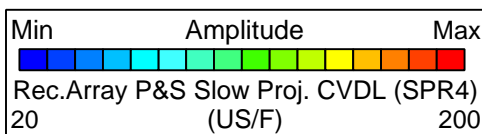
MEST-B	10C0-306	DTA-A	10C0-306
DSST-B	OP10-KP1	SGT-N	10C0-306
DTC-H	10C0-306		

PIP SUMMARY

Time Mark Every 60 S

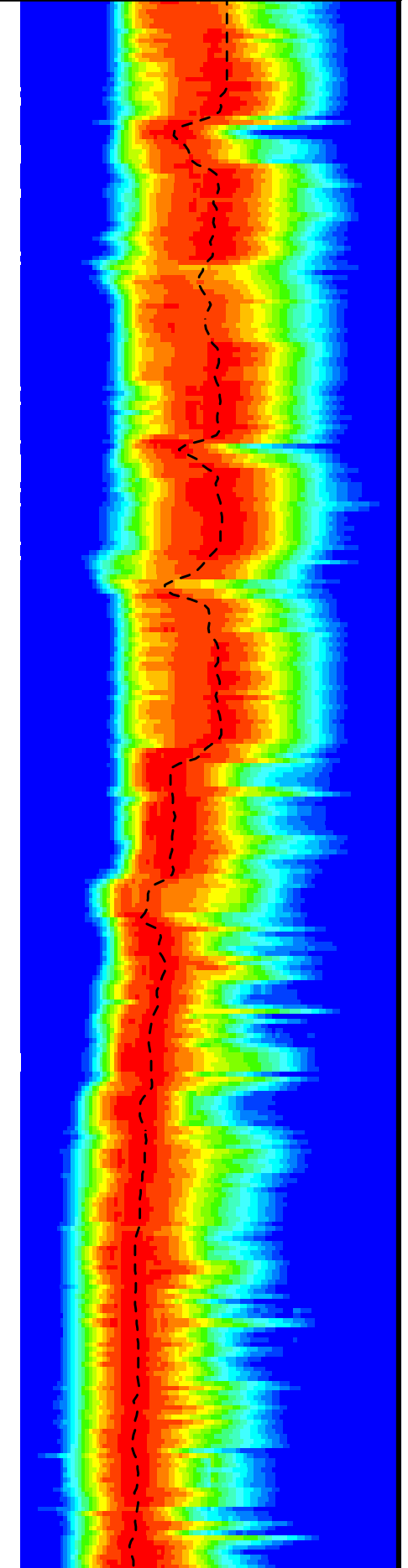
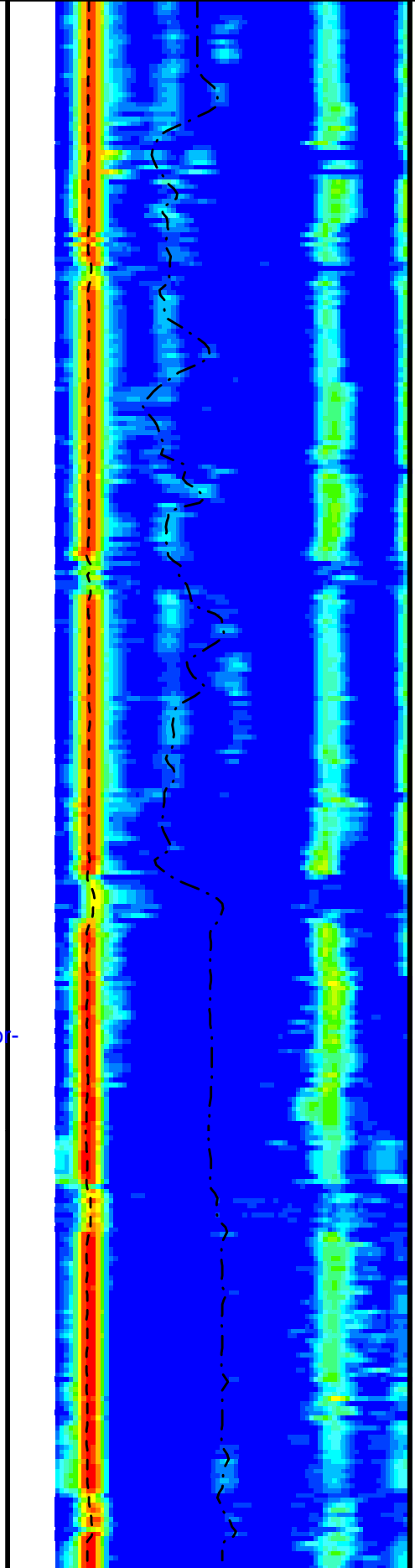
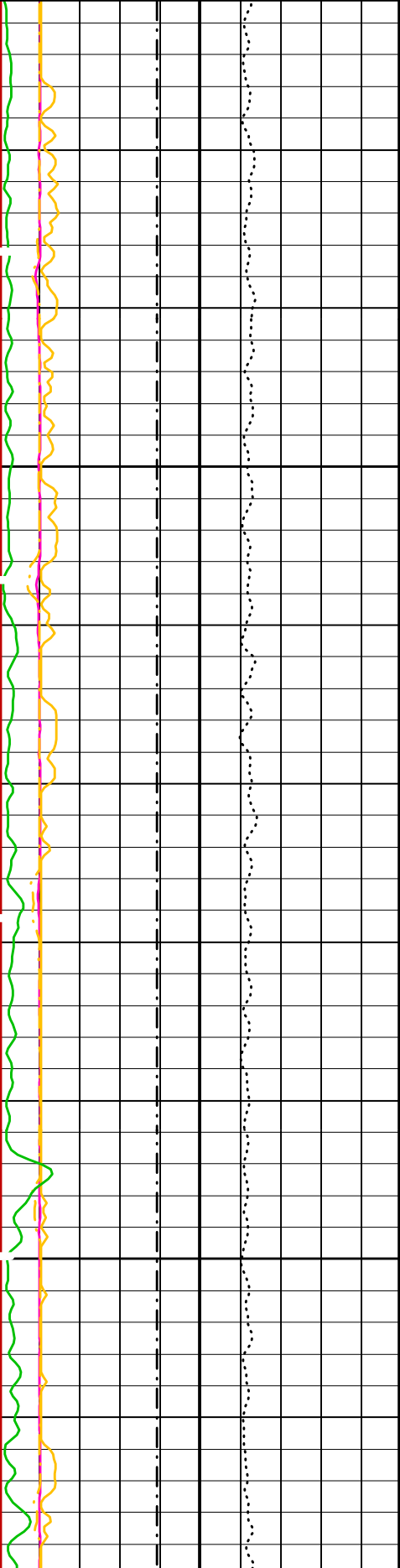
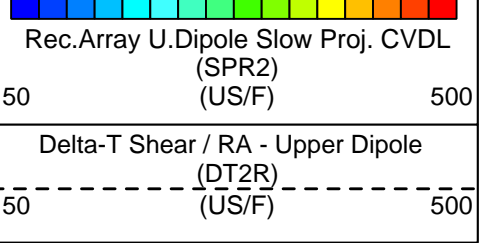
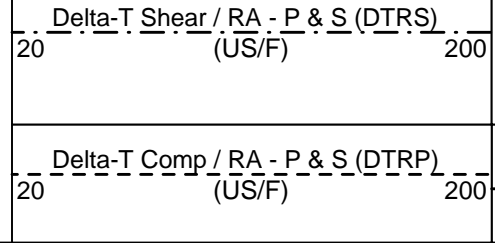
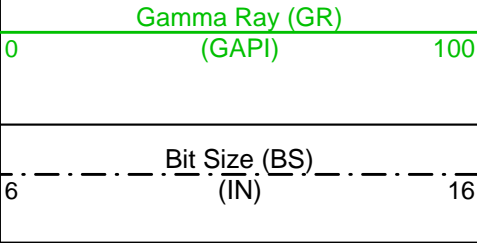
Waveform Data Copy Indicator 4 - Monopole P&S (WCI4)		
0	(---)	10
Peak Coherence / RA - P & S Shear (CHRS)		
-1	(---)	9
Peak Coherence / RA - P & S Comp (CHRP)		
0	(---)	10
Peak Coherence / RA - Upper Dipole (CHR2)		
0	(---)	10

P&S, Upper Dipole Shear Pass 2



Tension (TENS)		
10000	(LBF)	0

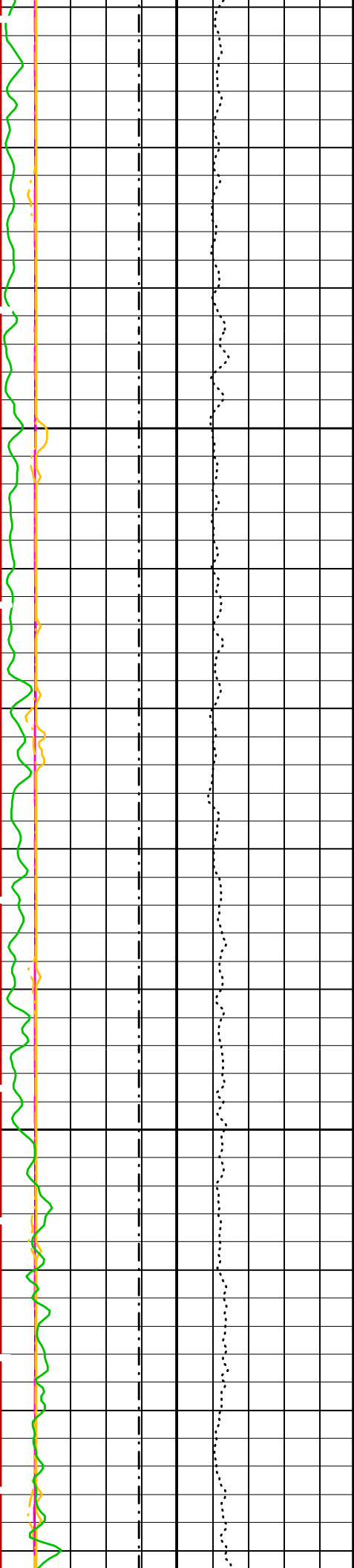
Min Amplitude Max



3850

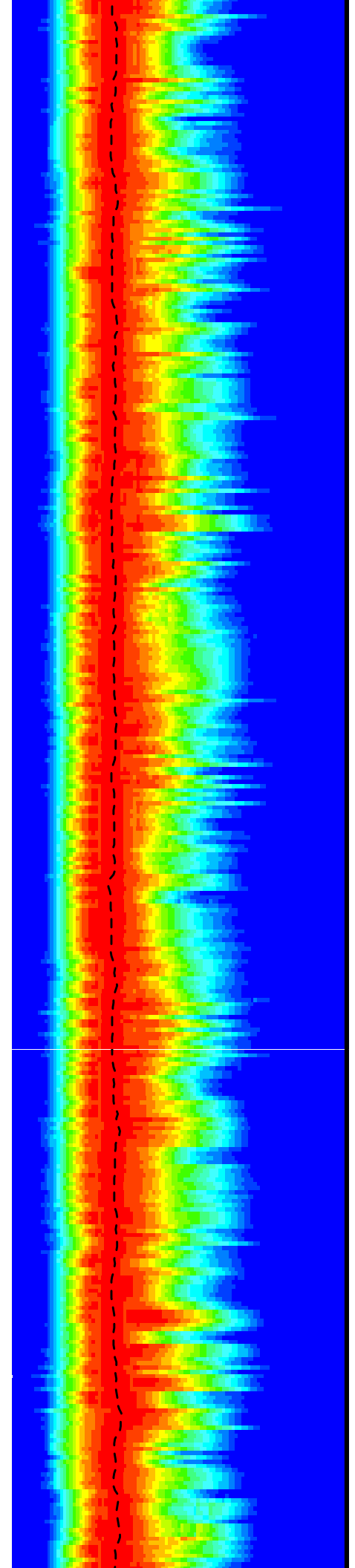
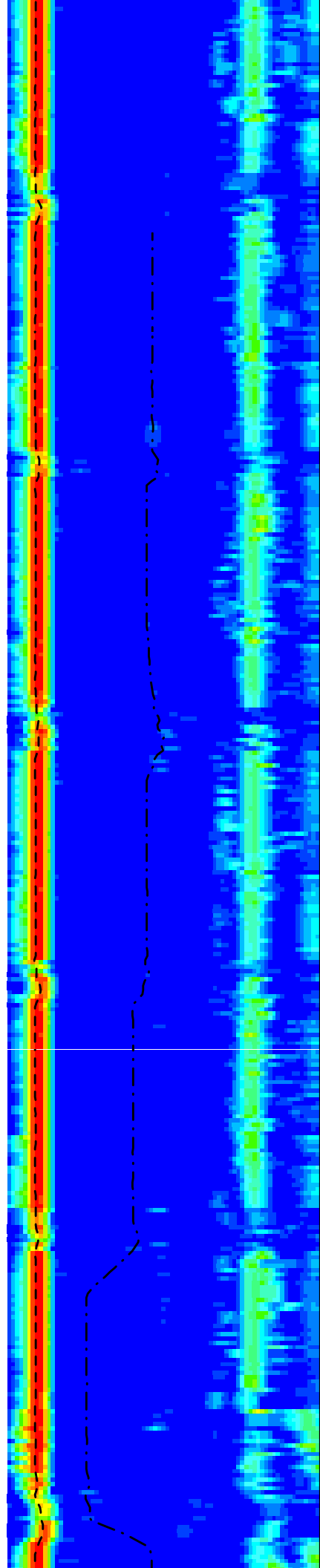
-Sea Floor-

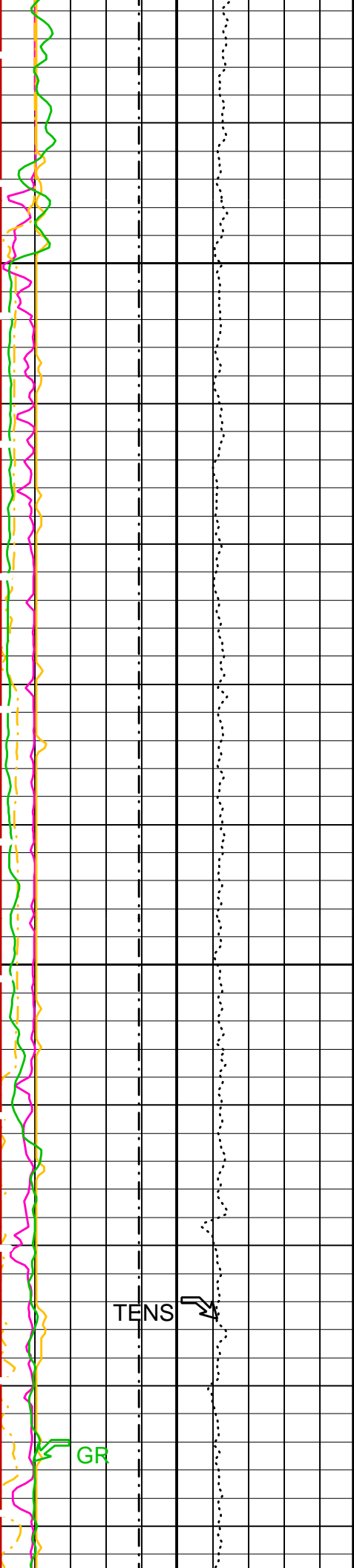
3875



3900

3925



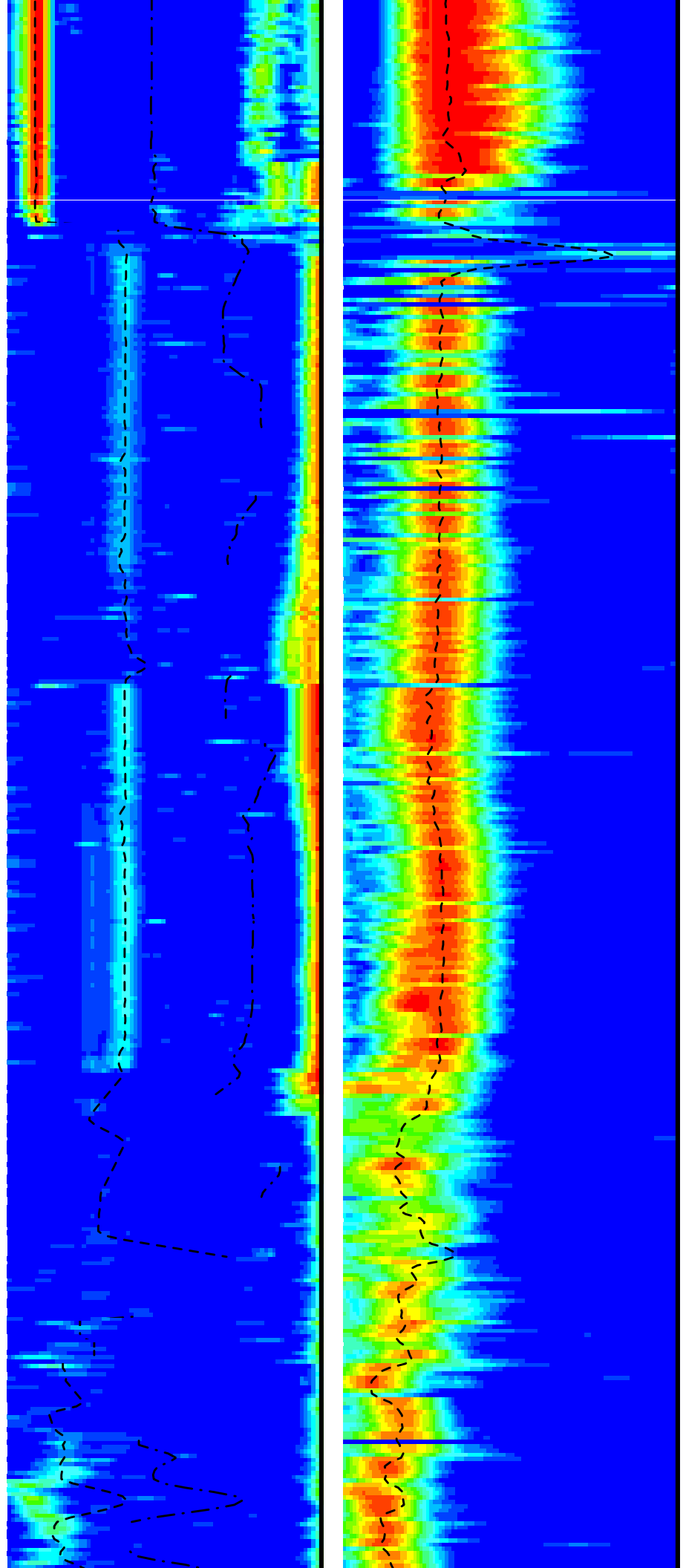


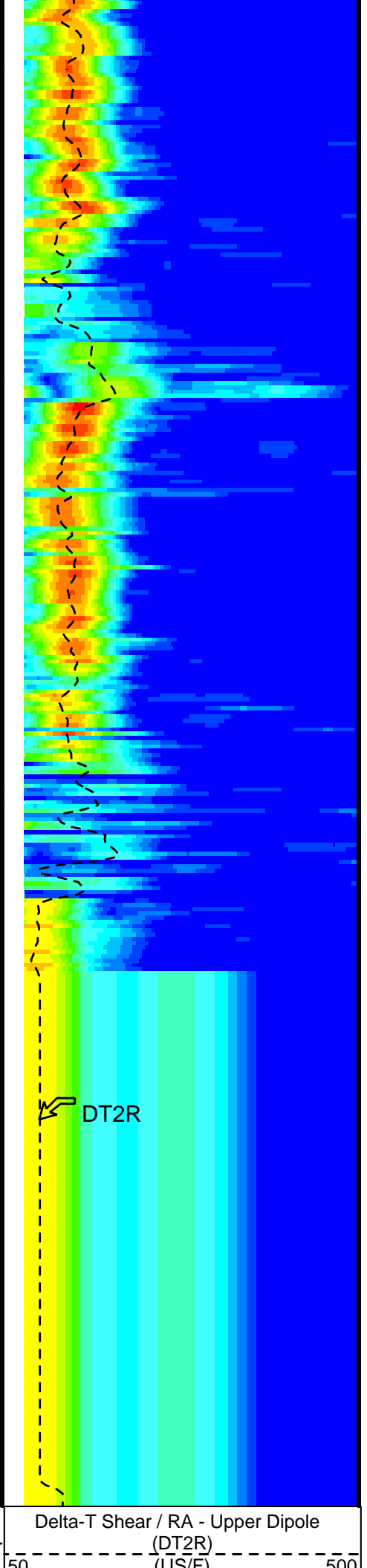
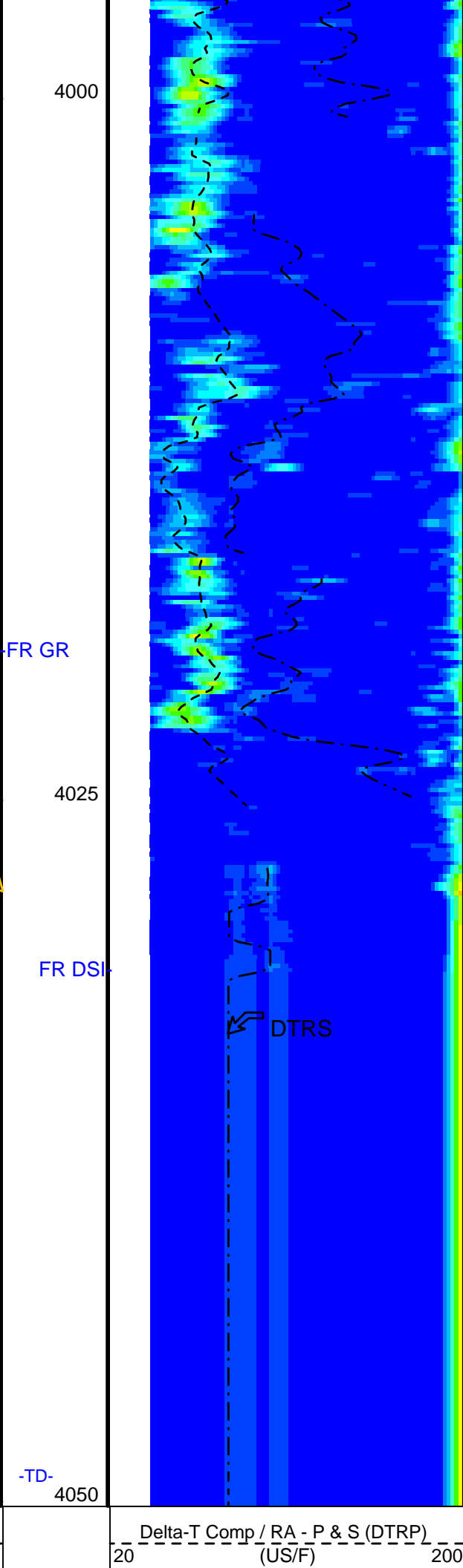
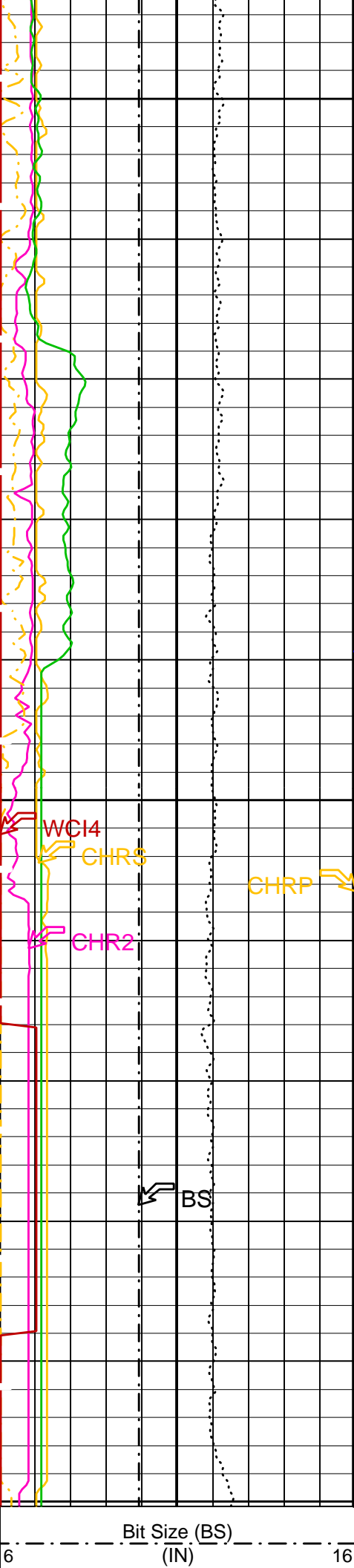
-Drill Pipe-
3950

3975

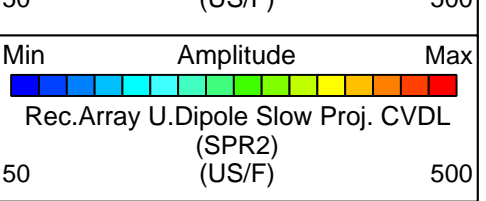
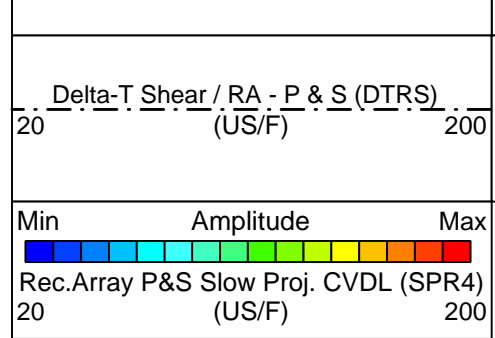
TENS ↗

GR ↗





Gamma Ray (GR) (GAPI)	0	100
Tension (TENS) (LBF)	10000	0
Peak Coherence / RA - Upper Dipole (CHR2)	0	10
Peak Coherence / RA - P & S Comp (CHRP)	0	10
Peak Coherence / RA - P & S Shear (CHRS)	-1	9
Waveform Data Copy Indicator 4 - Monopole P&S (WCI4)	0	10



P&S, Upper Dipole Shear, Pass #2

PIP SUMMARY

Time Mark Every 60 S

Parameters

DLIS Name	Description	Value
DSST-B: Dipole Shear Imager - B		
BHS	Borehole Status	OPEN
CASF	Label Casing Function - Monopole P&S	50
COLL	Label Slowness Lower Limit - Monopole P&S Compressional	40 US/F
COUL	Label Slowness Upper Limit - Monopole P&S Compressional	180 US/F
DDE2	Digitizing Delay 2	0 US
DDE4	Digitizing Delay 4	0 US
DDEX	Digitizing Delay X	0 US
DLCS	Label Compressional Source - Dipole Shear	USE
DSHL	Label Slowness Lower Limit - Dipole Shear	75 US/F
DSHU	Label Slowness Upper Limit - Dipole Shear	775 US/F
DSI2	Digitizer Sample Interval 2	40 US
DSI4	Digitizer Sample Interval 4	10 US
DSIX	Digitizer Sample Interval X	10 US
DTCS	Compressional Delta-T Source for DTCS Channel	PS_COMP
DTF	Delta-T Fluid	189 US/F
DWC2	Digitizer Word Count 2	512
DWC4	Digitizer Word Count 4	512
DWCX	Digitizer Word Count X	512
FILG	Label Fill Gap Control - Monopole P&S	COMP_SHEAR
LFC	Label Formation Character - Monopole P&S	DYNAMIC
MCS	Mean Casing Slowness	57 US/F
MTXG	Monopole Transmitter Geometry	186 IN
NWI2	Number Waveform Items 2	8
NWI4	Number Waveform Items 4	8
RSMN	Label Shear/Compressional Minimum Ratio - Monopole P&S	1.4
RSMX	Label Shear/Compressional Maximum Ratio - Monopole P&S	2.12
RX1G	Receiver 1 Geometry	294 IN
RX2G	Receiver 2 Geometry	300 IN
RX3G	Receiver 3 Geometry	306 IN
RX4G	Receiver 4 Geometry	312 IN
RX5G	Receiver 5 Geometry	318 IN
RX6G	Receiver 6 Geometry	324 IN
RX7G	Receiver 7 Geometry	330 IN
RX8G	Receiver 8 Geometry	336 IN
SAM2	DSST Sonic Acquisition Mode 2 - Upper Dipole Mode	ODD
SAM4	DSST Sonic Acquisition Mode 4 - High Frequency Monopole Mode for P&S	EVEN
SAMX	DSST Sonic Acquisition Mode X - Both Dipoles or Monopole Mode for Expert	OFF
SAS2	STC Sonic Array Status - Upper Dipole	255
SAS4	STC Sonic Array Status - Monopole P&S	255
SBO2	STC Search Band Offset - Upper Dipole	3000 US
SBO4	STC Search Band Offset - Monopole P&S	500 US

SBO4	STC Search Band Offset - Monopole P&S	500	US
SBR4	STC Baseline Removal - Monopole P&S	ON	
SBW2	STC Search Bandwidth - Upper Dipole	8000	US
SBW4	STC Search Bandwidth - Monopole P&S	2000	US
SFC2	STC Formation Character - Upper Dipole	SELECTABLE	
SFC4	STC Formation Character - Monopole P&S	SELECTABLE	
SFM2	STC Filter - Upper Dipole	B1-3K	
SFM4	STC Filter - Monopole P&S	B3-20K	
SHLL	Label Slowness Lower Limit - Monopole P&S Shear	75	US/F
SHUL	Label Slowness Upper Limit - Monopole P&S Shear	180	US/F
SLL2	STC Slowness Lower Limit - Upper Dipole	75	US/F
SLL4	STC Slowness Lower Limit - Monopole P&S	40	US/F
SST2	STC Slowness Step - Upper Dipole	4	US/F
SST4	STC Slowness Step - Monopole P&S	2	US/F
SSW2	STC Source Waveform - Upper Dipole	WF_SAM2	
SSW4	STC Source Waveform - Monopole P&S	WF_SAM4	
STLL	Label Slowness Lower Limit - Monopole Stoneley	180	US/F
STUL	Label Slowness Upper Limit - Monopole Stoneley	780	US/F
SUL2	STC Slowness Upper Limit - Upper Dipole	775	US/F
SUL4	STC Slowness Upper Limit - Monopole P&S	240	US/F
SWD2	STC Slowness Width - Upper Dipole	40	US/F
SWD4	STC Slowness Width - Monopole P&S	10	US/F
TBF2	STC Time for Baseline Fill - Upper Dipole	0	US
TBF4	STC Time for Baseline Fill - Monopole P&S	300	US
TLL2	STC Time Lower Limit - Upper Dipole	600	US
TLL4	STC Time Lower Limit - Monopole P&S	150	US
TST2	STC Time Step - Upper Dipole	200	US
TST4	STC Time Step - Monopole P&S	50	US
TUL2	STC Time Upper Limit - Upper Dipole	15525	US
TUL4	STC Time Upper Limit - Monopole P&S	3660	US
TWD2	STC Time Width - Upper Dipole	2000	US
TWD4	STC Time Width - Monopole P&S	1000	US
TWI2	STC Integration Time Window - Upper Dipole	1600	US
TWI4	STC Integration Time Window - Monopole P&S	500	US
TWSX	Transmitter Waveform Select X	0	
UTXG	Upper Dipole Transmitter Geometry	162	IN
WFM4	Waveform Mode 4	W1	
BHS	SGT-N: Scintillation Gamma-Ray - N Borehole Status	OPEN	
BS	System and Miscellaneous		
DO	Bit Size	9.875	IN
PP	Depth Offset for Playback	0.0	M
	Playback Processing	NORMAL	

Format: DSST_P_S_UPPER_VDL_COLOR Vertical Scale: 1:200 Graphics File Created: 27-Jun-2002 01:09

OP System Version: 10C0-306			
MCM			
MEST-B	10C0-306	DTA-A	10C0-306
DSST-B	OP10-KP1	SGT-N	10C0-306
DTC-H	10C0-306		

Input DLIS Files						
DEFAULT	FMS_DSI_016LUP	FN:23	PRODUCER	24-Jun-2002 04:12	4050.2 M	3834.8 M
Output DLIS Files						
DEFAULT	FMS_DSI_030PUP	FN:43	PRODUCER	27-Jun-2002 01:09		
RED2	FMS_DSI_030PUP	FN:44	PRODUCER	27-Jun-2002 01:09		

Input DLIS Files						
DEFAULT	FMS_DSI_015LUP	FN:21	PRODUCER	24-Jun-2002 03:28	4050.2 M	3915.3 M
Output DLIS Files						
DEFAULT	FMS_DSI_029PUP	FN:41	PRODUCER	27-Jun-2002 01:01	4050.2 M	3915.8 M
RED2	FMS_DSI_029PUP	FN:42	PRODUCER	27-Jun-2002 01:01	4050.2 M	3915.8 M

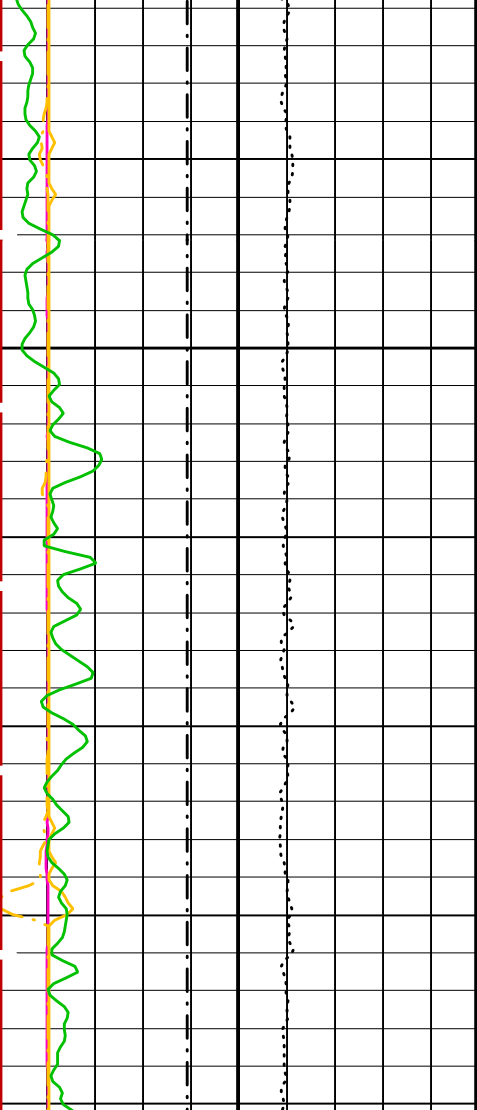
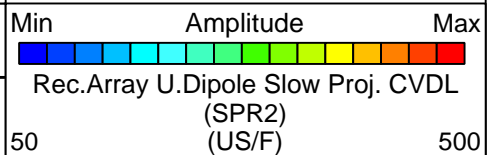
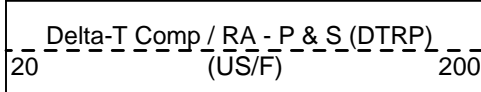
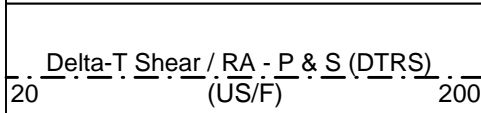
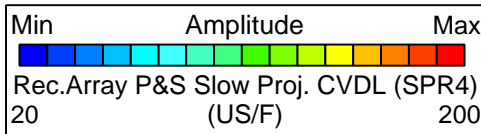
OP System Version: 10C0-306			
MCM			
MEST-B	10C0-306	DTA-A	10C0-306
DSST-B	OP10-KP1	SGT-N	10C0-306

PIP SUMMARY

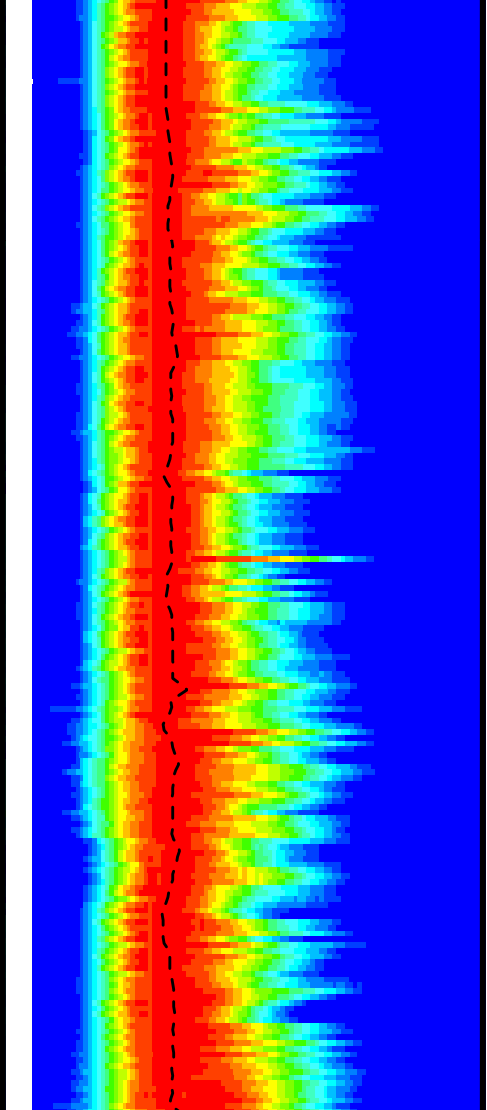
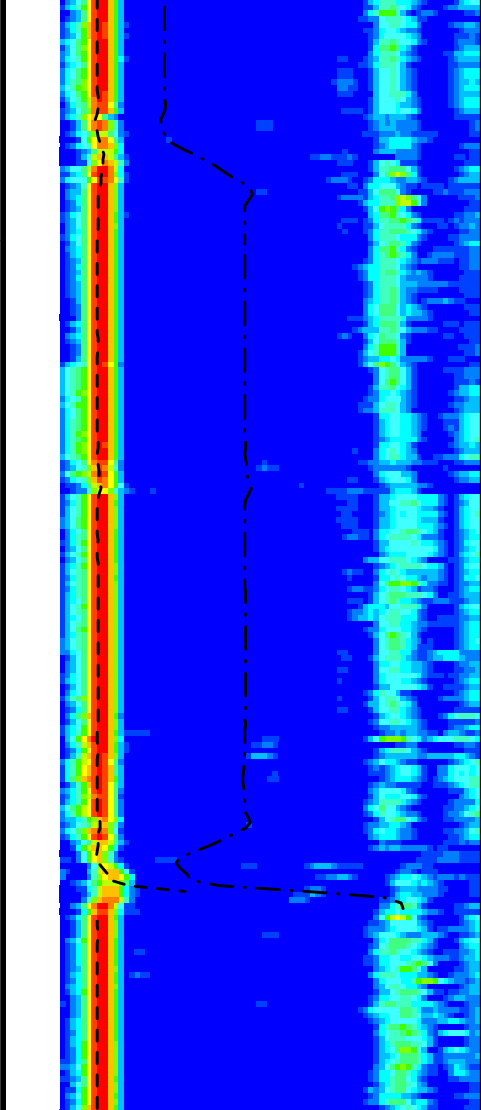
Time Mark Every 60 S

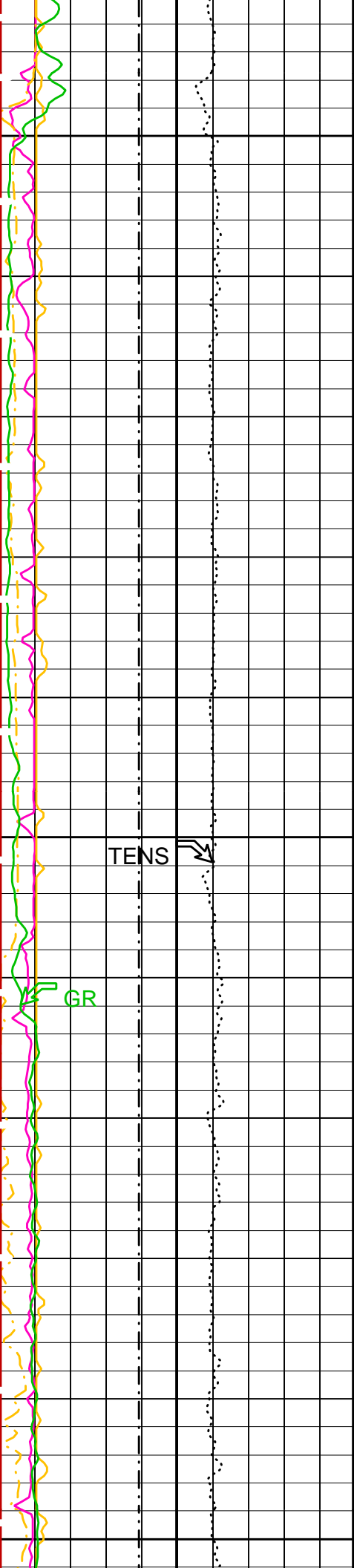
Waveform Data Copy Indicator 4 - Monopole P&S (WCI4)		
0	(---)	10
Peak Coherence / RA - P & S Shear (CHRS)		
-1	(---)	9
Peak Coherence / RA - P & S Comp (CHRP)		
0	(---)	10
Peak Coherence / RA - Upper Dipole (CHR2)		
0	(---)	10
Tension (TENS) (LBF)		
10000		0
Gamma Ray (GR) (GAPI)		
0		100
Bit Size (BS) (IN)		
6		16

P&S, UPPER DIPOLE SHEAR, PASS #1



3925

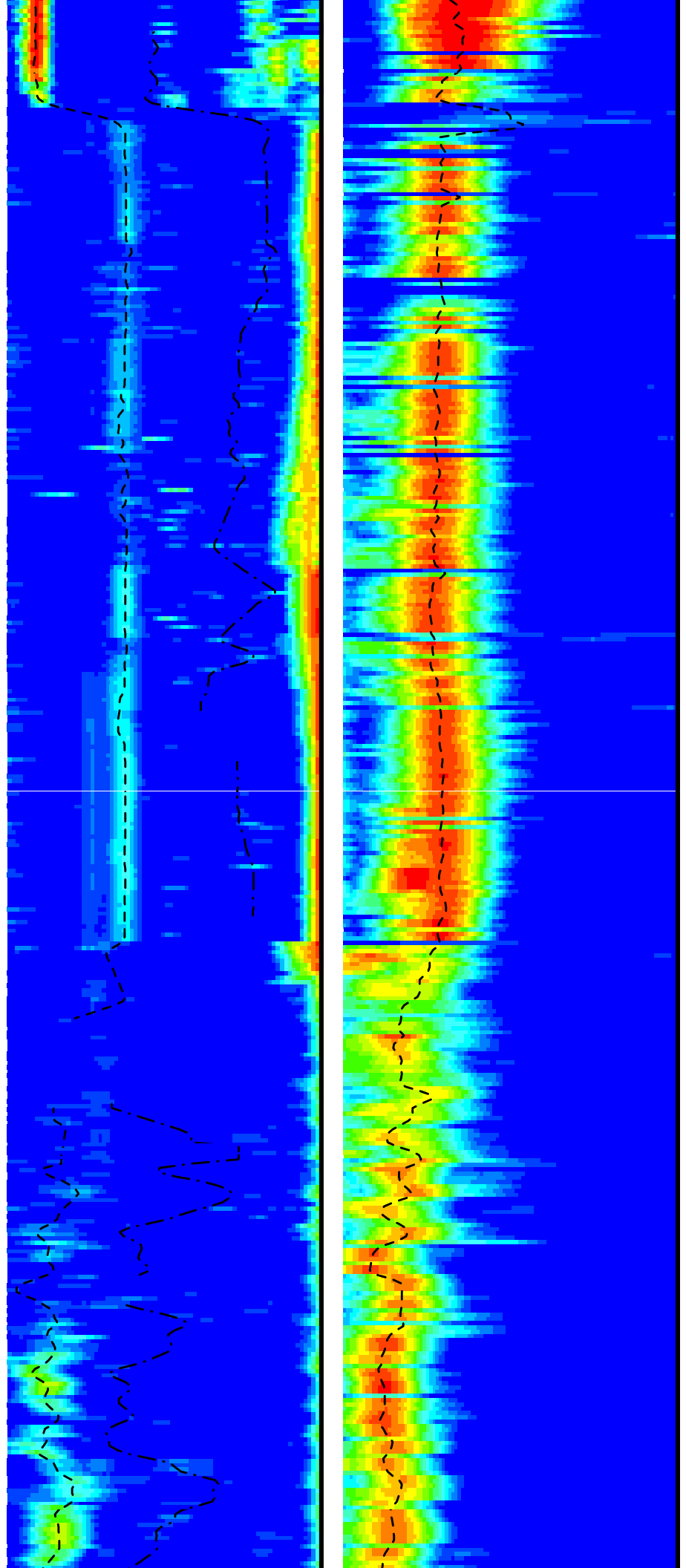


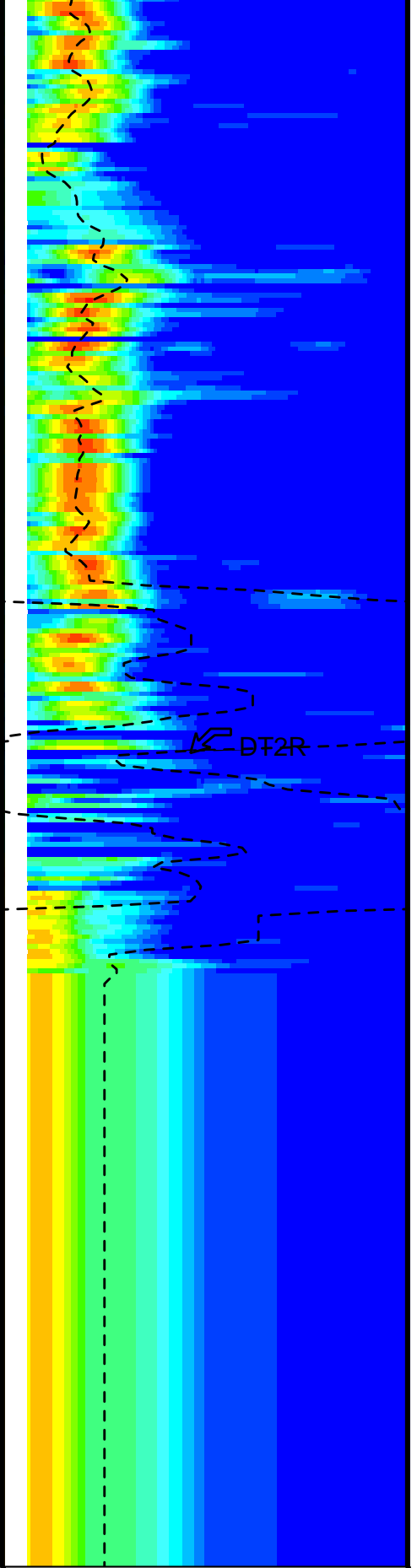
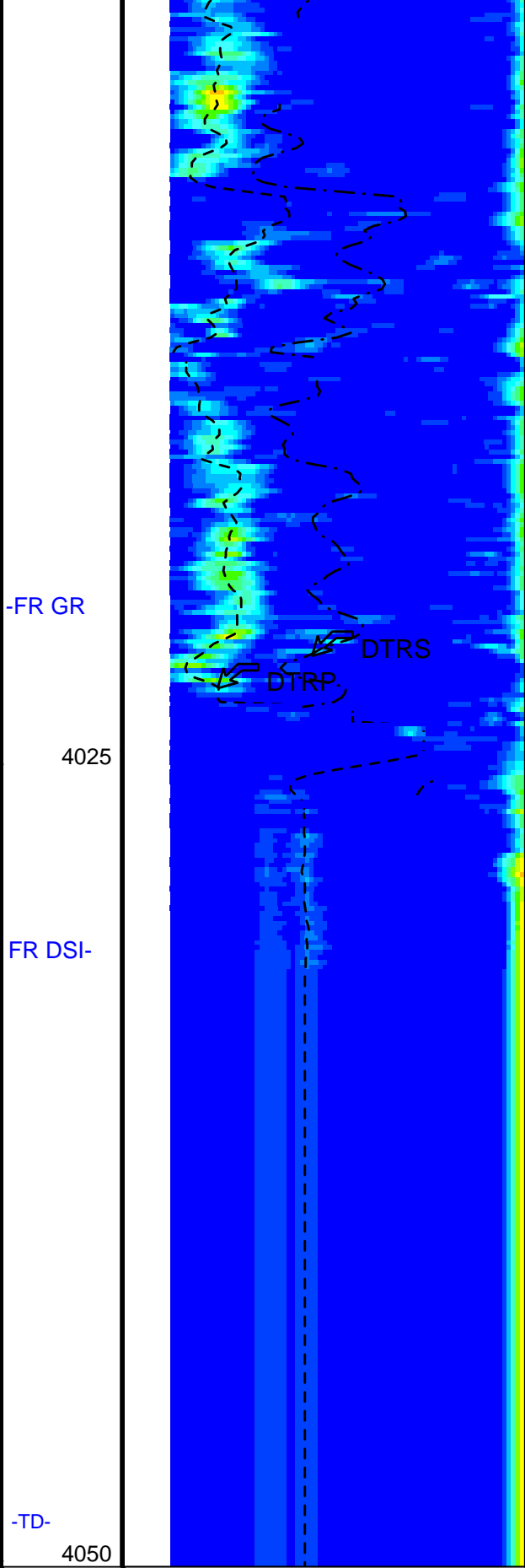
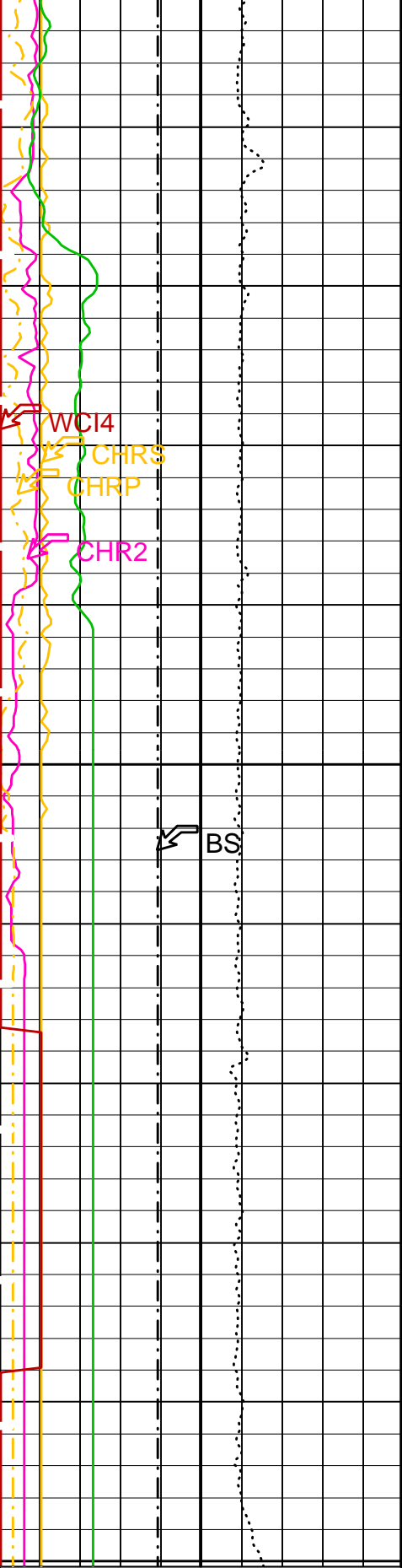


-DRILL PIPE-
3950

3975

4000





Bit Size (BS)
(IN) 6 16

Gamma Ray (GR)
(GAPI) 0 100

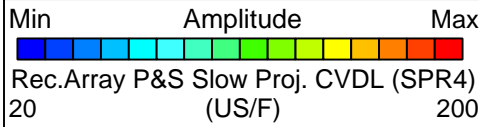
Delta-T Comp / RA - P & S (DTRP)
(US/F) 20 200

Delta-T Shear / RA - P & S (DTRS)
(US/F) 20 200

Delta-T Shear / RA - Upper Dipole
(DT2R)
(US/F) 50 500

Min Amplitude Max
Rec.Array U.Dipole Slow Proj. CVDL
(SPR2)
(US/F) 50 500

Tension (TENS)		
10000	(LBF)	0
Peak Coherence / RA - Upper Dipole (CHR2)		
0	(---)	10
Peak Coherence / RA - P & S Comp (CHRP)		
0	(---)	10
Peak Coherence / RA - P & S Shear (CHRS)		
-1	(---)	9
Waveform Data Copy Indicator 4 - Monopole P&S (WCI4)		
0	(---)	10



P&S, UPPER DIPOLE SHEAR, PASS #1

PIP SUMMARY

Time Mark Every 60 S

Parameters

DLIS Name	Description	Value
DSST-B: Dipole Shear Imager - B		
BHS	Borehole Status	OPEN
CASF	Label Casing Function - Monopole P&S	50
COLL	Label Slowness Lower Limit - Monopole P&S Compressional	40 US/F
COUL	Label Slowness Upper Limit - Monopole P&S Compressional	180 US/F
DDE2	Digitizing Delay 2	0 US
DDE4	Digitizing Delay 4	0 US
DDEX	Digitizing Delay X	0 US
DLCS	Label Compressional Source - Dipole Shear	USE
DSHL	Label Slowness Lower Limit - Dipole Shear	75 US/F
DSHU	Label Slowness Upper Limit - Dipole Shear	775 US/F
DSI2	Digitizer Sample Interval 2	40 US
DSI4	Digitizer Sample Interval 4	10 US
DSIX	Digitizer Sample Interval X	10 US
DTCS	Compressional Delta-T Source for DTCO Channel	PS_COMP
DTF	Delta-T Fluid	189 US/F
DWC2	Digitizer Word Count 2	512
DWC4	Digitizer Word Count 4	512
DWCX	Digitizer Word Count X	512
FILG	Label Fill Gap Control - Monopole P&S	COMP_SHEAR
LFC	Label Formation Character - Monopole P&S	DYNAMIC
MCS	Mean Casing Slowness	57 US/F
MTXG	Monopole Transmitter Geometry	186 IN
NWI2	Number Waveform Items 2	8
NWI4	Number Waveform Items 4	8
RSMN	Label Shear/Compressional Minimum Ratio - Monopole P&S	1.4
RSMX	Label Shear/Compressional Maximum Ratio - Monopole P&S	2.12
RX1G	Receiver 1 Geometry	294 IN
RX2G	Receiver 2 Geometry	300 IN
RX3G	Receiver 3 Geometry	306 IN
RX4G	Receiver 4 Geometry	312 IN
RX5G	Receiver 5 Geometry	318 IN
RX6G	Receiver 6 Geometry	324 IN
RX7G	Receiver 7 Geometry	330 IN
RX8G	Receiver 8 Geometry	336 IN
SAM2	DSST Sonic Acquisition Mode 2 - Upper Dipole Mode	ODD
SAM4	DSST Sonic Acquisition Mode 4 - High Frequency Monopole Mode for P&S	EVEN
SAMX	DSST Sonic Acquisition Mode X - Both Dipoles or Monopole Mode for Expert	OFF
SAS2	STC Sonic Array Status - Upper Dipole	255
SAS4	STC Sonic Array Status - Monopole P&S	255
SBO2	STC Search Band Offset - Upper Dipole	3000 US
SBO4	STC Search Band Offset - Monopole P&S	500 US
SBR4	STC Baseline Removal - Monopole P&S	ON
SBW2	STC Search Bandwidth - Upper Dipole	8000 US
SBW4	STC Search Bandwidth - Monopole P&S	2000 US
SFC2	STC Formation Character - Upper Dipole	SELECTABLE
SFC4	STC Formation Character - Monopole P&S	SELECTABLE
SFM2	STC Filter - Upper Dipole	B1-3K

SFM4	STC Filter - Monopole P&S	B3-20K	75	US/F
SHLL	Label Slowness Lower Limit - Monopole P&S Shear		180	US/F
SHUL	Label Slowness Upper Limit - Monopole P&S Shear		75	US/F
SLL2	STC Slowness Lower Limit - Upper Dipole		40	US/F
SLL4	STC Slowness Lower Limit - Monopole P&S		4	US/F
SST2	STC Slowness Step - Upper Dipole		2	US/F
SST4	STC Slowness Step - Monopole P&S			
SSW2	STC Source Waveform - Upper Dipole	WF_SAM2		
SSW4	STC Source Waveform - Monopole P&S	WF_SAM4		
STLL	Label Slowness Lower Limit - Monopole Stoneley		180	US/F
STUL	Label Slowness Upper Limit - Monopole Stoneley		780	US/F
SUL2	STC Slowness Upper Limit - Upper Dipole		775	US/F
SUL4	STC Slowness Upper Limit - Monopole P&S		240	US/F
SWD2	STC Slowness Width - Upper Dipole		40	US/F
SWD4	STC Slowness Width - Monopole P&S		10	US/F
TBF2	STC Time for Baseline Fill - Upper Dipole		0	US
TBF4	STC Time for Baseline Fill - Monopole P&S		300	US
TLL2	STC Time Lower Limit - Upper Dipole		600	US
TLL4	STC Time Lower Limit - Monopole P&S		150	US
TST2	STC Time Step - Upper Dipole		200	US
TST4	STC Time Step - Monopole P&S		50	US
TUL2	STC Time Upper Limit - Upper Dipole		15525	US
TUL4	STC Time Upper Limit - Monopole P&S		3660	US
TWD2	STC Time Width - Upper Dipole		2000	US
TWD4	STC Time Width - Monopole P&S		1000	US
TWI2	STC Integration Time Window - Upper Dipole		1600	US
TWI4	STC Integration Time Window - Monopole P&S		500	US
TWSX	Transmitter Waveform Select X		0	
UTXG	Upper Dipole Transmitter Geometry		162	IN
WFM4	Waveform Mode 4		W1	
BHS	SGT-N: Scintillation Gamma-Ray - N Borehole Status		OPEN	
BS	System and Miscellaneous Bit Size		9.875	IN
DO	Depth Offset for Playback		0.0	M
PP	Playback Processing		NORMAL	

Format: DSST_P_S_UPPER_VDL_COLOR Vertical Scale: 1:200 Graphics File Created: 27-Jun-2002 01:01


OP System Version: 10C0-306			
MCM			
MEST-B	10C0-306	DTA-A	10C0-306
DSST-B	OP10-KP1	SGT-N	10C0-306
DTC-H	10C0-306		

Input DLIS Files						
DEFAULT	FMS_DSI_015LUP	FN:21	PRODUCER	24-Jun-2002 03:28	4050.2 M	3915.3 M
Output DLIS Files						
DEFAULT	FMS_DSI_029PUP	FN:41	PRODUCER	27-Jun-2002 01:01		
RED2	FMS_DSI_029PUP	FN:42	PRODUCER	27-Jun-2002 01:01		

Input DLIS Files						
DEFAULT	FMS_DSI_015LUP	FN:21	PRODUCER	24-Jun-2002 03:28	4050.2 M	3915.3 M
Output DLIS Files						
DEFAULT	FMS_DSI_029PUP	FN:41	PRODUCER	27-Jun-2002 01:01	4050.2 M	3915.8 M
RED2	FMS_DSI_029PUP	FN:42	PRODUCER	27-Jun-2002 01:01	4050.2 M	3915.8 M

OP System Version: 10C0-306			
MCM			
MEST-B	10C0-306	DTA-A	10C0-306
DSST-B	OP10-KP1	SGT-N	10C0-306
DTC-H	10C0-306		

PIP SUMMARY

 Time Mark Every 60 S

Waveform Data Copy Indicator 4 - Monopole P&S (WCI4)

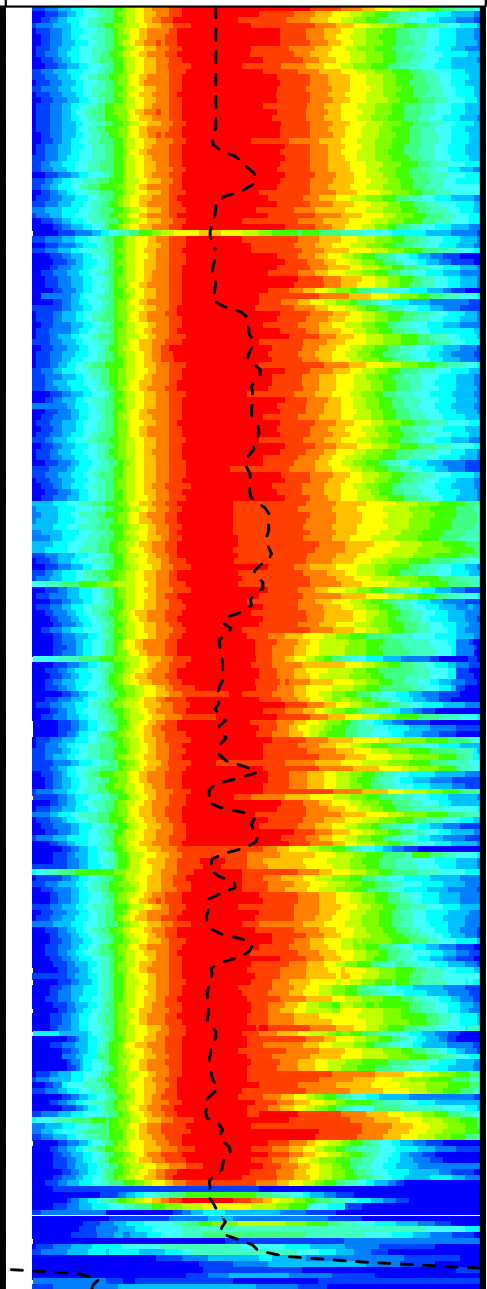
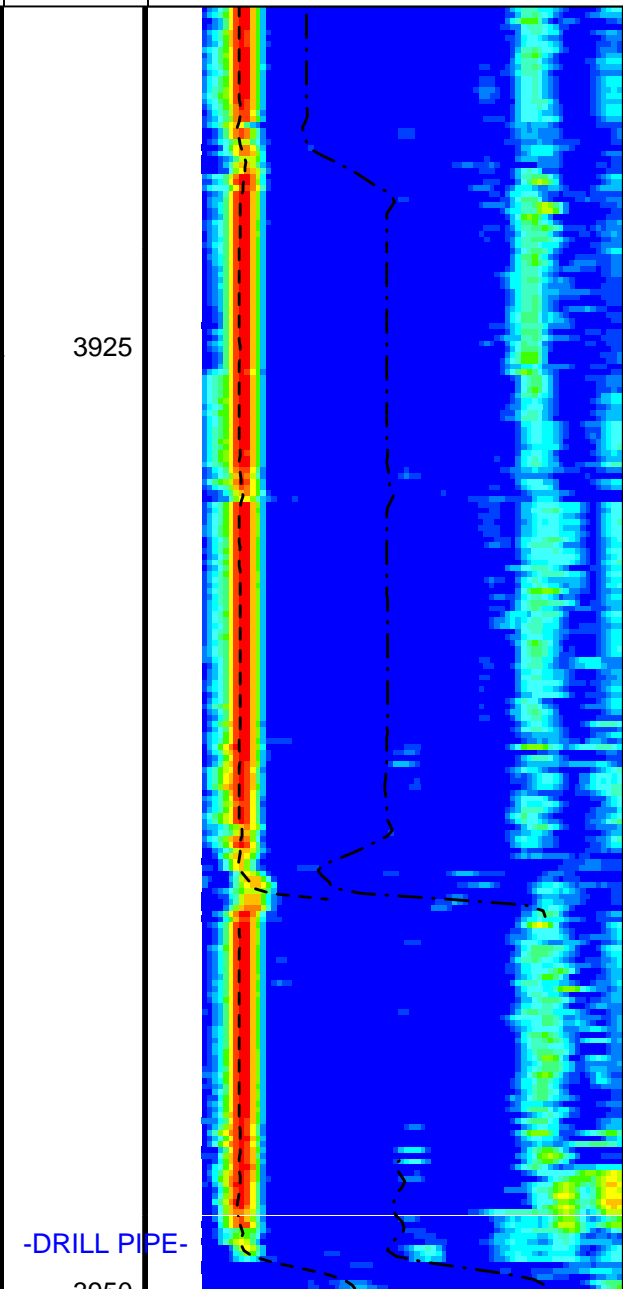
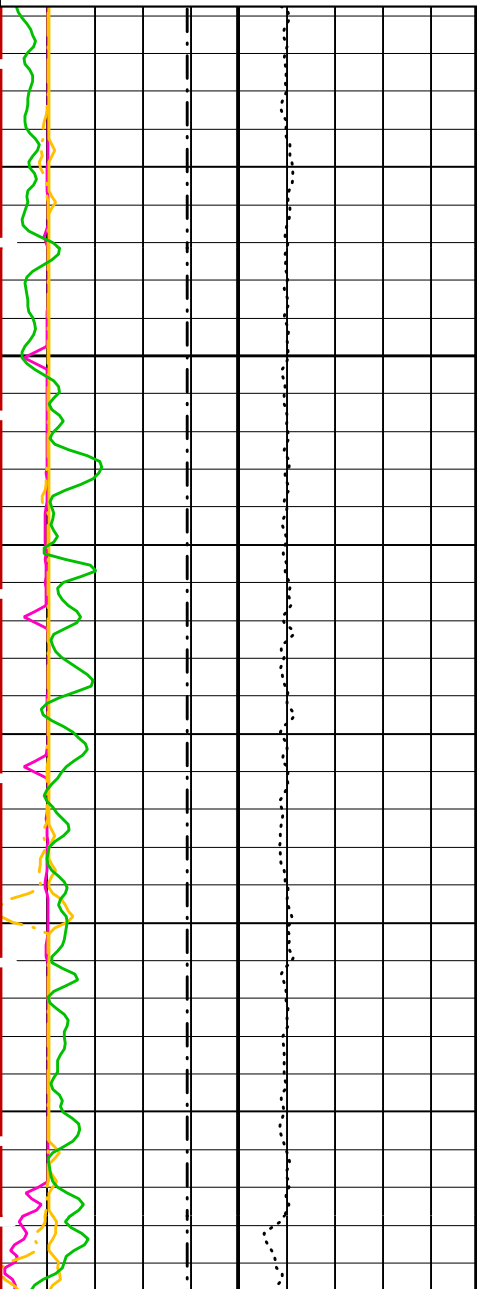
0	(---)	10
Peak Coherence / RA - P & S Shear (CHRS)		
-1	(---)	9
Peak Coherence / RA - P & S Comp (CHRP)		
0	(---)	10
Peak Coherence / RA - Lower Dipole (CHR1)		
0	(---)	10
Tension (TENS) (LBF)		
10000		0
Gamma Ray (GR) (GAPI)		
0		100
Bit Size (BS) (IN)		
6		16

P&S, LOWER DIPOLE LOW FREQUENCY SHEAR

Pass 1

Min	Amplitude	Max
Rec.Array P&S Slow Proj. CVDL (SPR4) (US/F)		
20		200
Delta-T Shear / RA - P & S (DTRS) (US/F)		
20		200
Delta-T Comp / RA - P & S (DTRP) (US/F)		
20		200

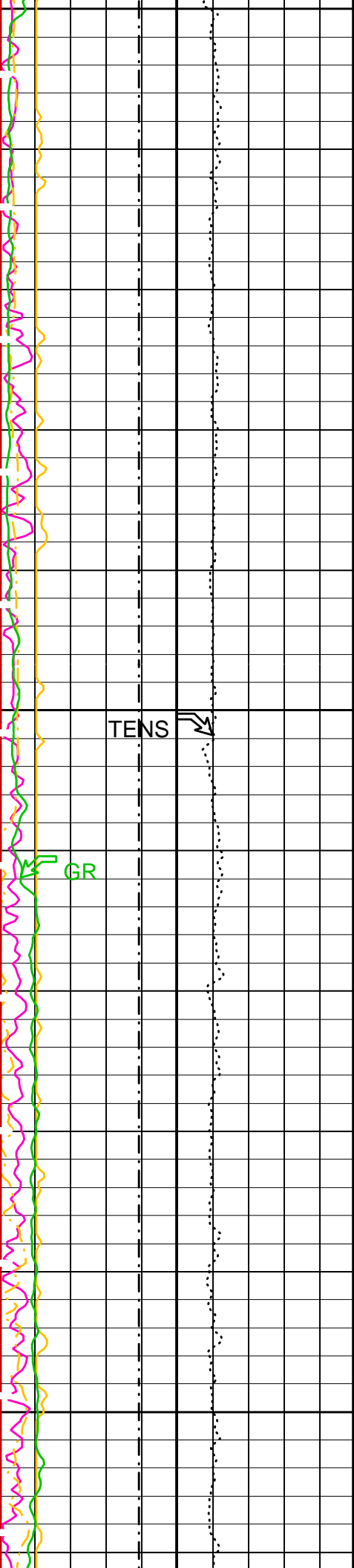
Min	Amplitude	Max
Rec.Array L.Dipole Slow Proj. CVDL (SPR1) (US/F)		
50		500
Delta-T Shear / RA - Lower Dipole (DT1R) (US/F)		
50		500



3925

-DRILL PIPE-

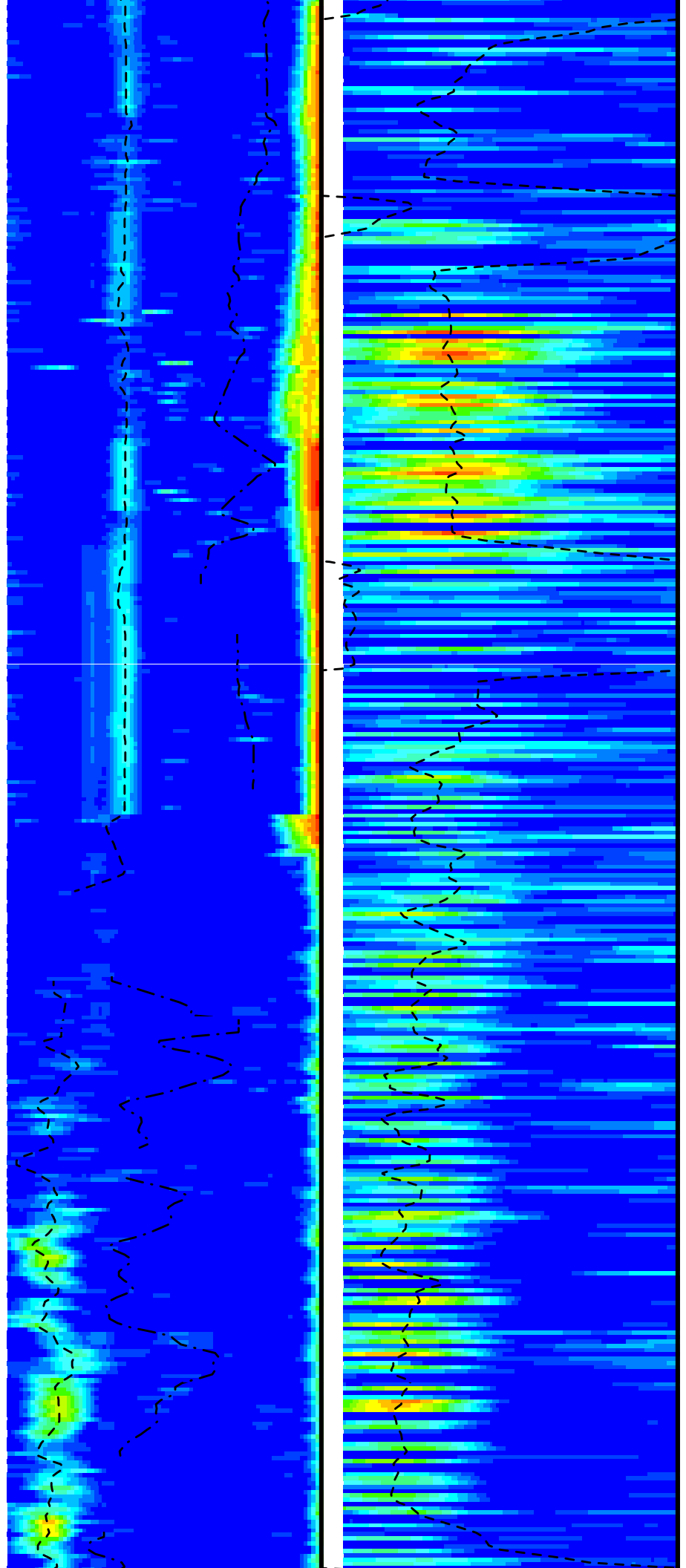
3950

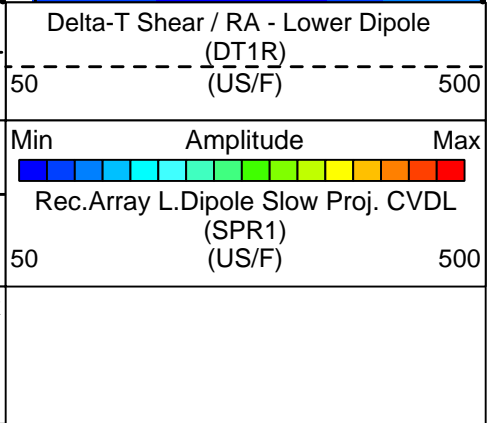
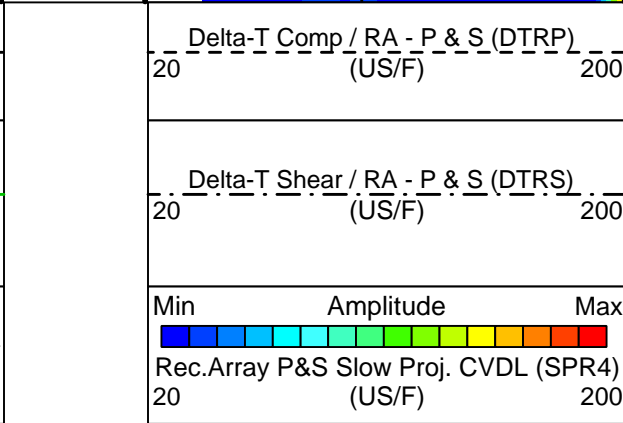
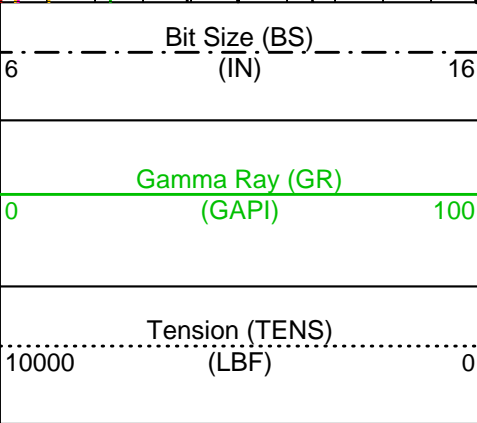
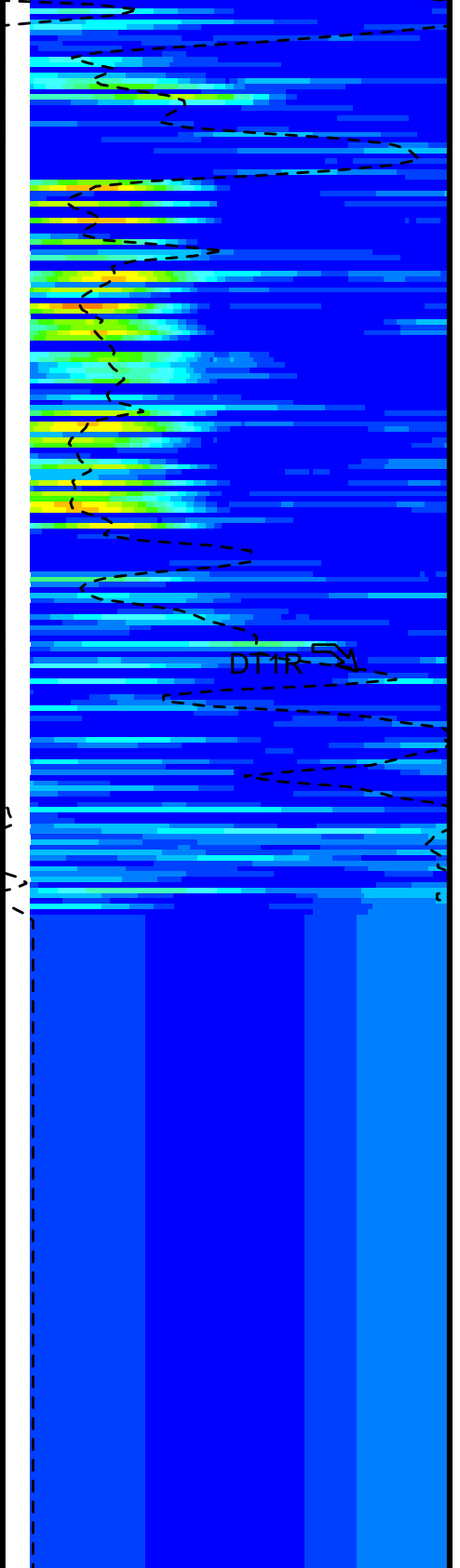
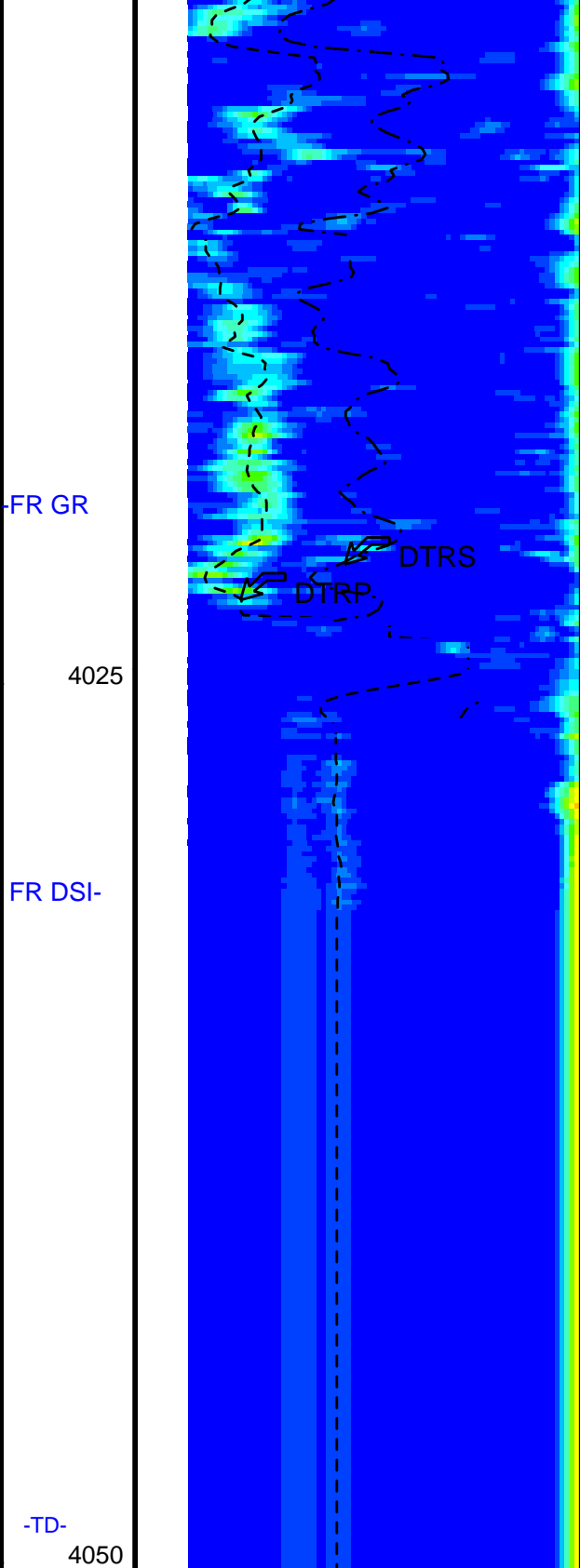
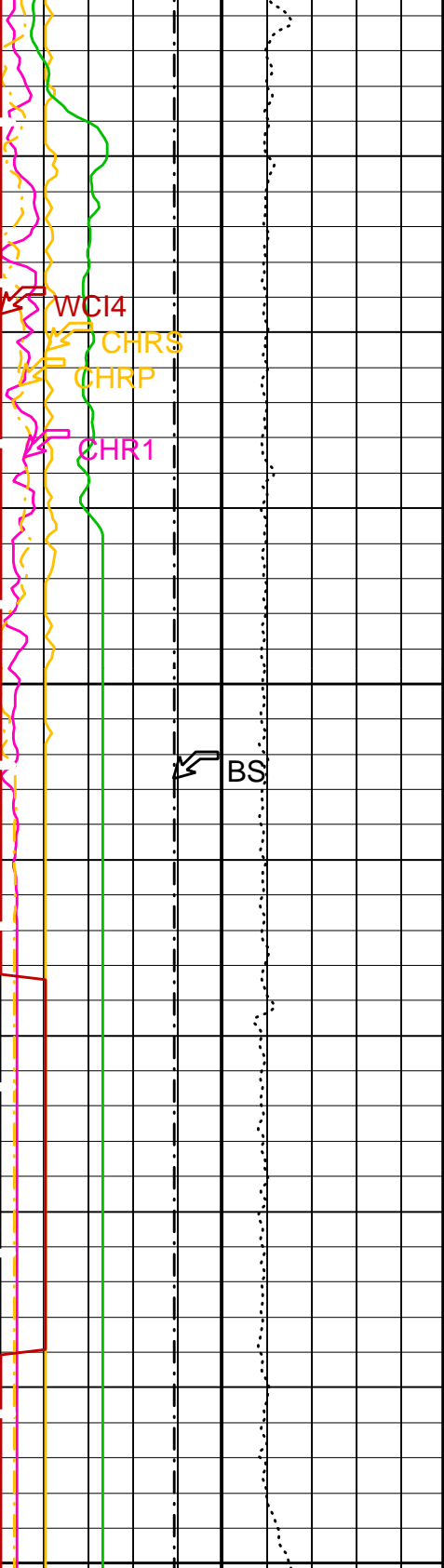


3950

3975

4000





Peak Coherence / RA - Lower Dipole (CHR1)	0	(----	10
Peak Coherence / RA - P & S Comp (CHRP)	0	(----	10
Peak Coherence / RA - P & S Shear (CHRS)	-1	(----	9
Waveform Data Copy Indicator 4 - Monopole P&S (WCI4)	0	(----	10

P&S, LOWER DIPOLE LOW FREQUENCY SHEAR

Pass 1

PIP SUMMARY

Time Mark Every 60 S

Parameters

DLIS Name	Description	Value	
DSST-B: Dipole Shear Imager - B			
BHS	Borehole Status	OPEN	
CASF	Label Casing Function - Monopole P&S	50	
COLL	Label Slowness Lower Limit - Monopole P&S Compressional	40	US/F
COUL	Label Slowness Upper Limit - Monopole P&S Compressional	180	US/F
DDE1	Digitizing Delay 1	0	US
DDE4	Digitizing Delay 4	0	US
DDEX	Digitizing Delay X	0	US
DLCS	Label Compressional Source - Dipole Shear	USE	
DSHL	Label Slowness Lower Limit - Dipole Shear	75	US/F
DSHU	Label Slowness Upper Limit - Dipole Shear	775	US/F
DSI1	Digitizer Sample Interval 1	40	US
DSI4	Digitizer Sample Interval 4	10	US
DSIX	Digitizer Sample Interval X	10	US
DTCS	Compressional Delta-T Source for DTCO Channel	PS_COMP	
DTF	Delta-T Fluid	189	US/F
DWC1	Digitizer Word Count 1	512	
DWC4	Digitizer Word Count 4	512	
DWCX	Digitizer Word Count X	512	
FILG	Label Fill Gap Control - Monopole P&S	COMP_SHEAR	
LFC	Label Formation Character - Monopole P&S	DYNAMIC	
LTXG	Lower Dipole Transmitter Geometry	156	IN
MCS	Mean Casing Slowness	57	US/F
MTXG	Monopole Transmitter Geometry	186	IN
NWI1	Number Waveform Items 1	8	
NWI4	Number Waveform Items 4	8	
RSMN	Label Shear/Compressional Minimum Ratio - Monopole P&S	1.4	
RSMX	Label Shear/Compressional Maximum Ratio - Monopole P&S	2.12	
RX1G	Receiver 1 Geometry	294	IN
RX2G	Receiver 2 Geometry	300	IN
RX3G	Receiver 3 Geometry	306	IN
RX4G	Receiver 4 Geometry	312	IN
RX5G	Receiver 5 Geometry	318	IN
RX6G	Receiver 6 Geometry	324	IN
RX7G	Receiver 7 Geometry	330	IN
RX8G	Receiver 8 Geometry	336	IN
SAM1	DSST Sonic Acquisition Mode 1 - Lower Dipole Mode	LFD_EVEN	
SAM4	DSST Sonic Acquisition Mode 4 - High Frequency Monopole Mode for P&S	EVEN	
SAMX	DSST Sonic Acquisition Mode X - Both Dipoles or Monopole Mode for Expert	OFF	
SAS1	STC Sonic Array Status - Lower Dipole	255	
SAS4	STC Sonic Array Status - Monopole P&S	255	
SBO1	STC Search Band Offset - Lower Dipole	3000	US
SBO4	STC Search Band Offset - Monopole P&S	500	US
SBR4	STC Baseline Removal - Monopole P&S	ON	
SBW1	STC Search Bandwidth - Lower Dipole	8000	US
SBW4	STC Search Bandwidth - Monopole P&S	2000	US
SFC1	STC Formation Character - Lower Dipole	SELECTABLE	
SFC4	STC Formation Character - Monopole P&S	SELECTABLE	
SFM1	STC Filter - Lower Dipole	B1-3K	
SFM4	STC Filter - Monopole P&S	B3-20K	
SHLL	Label Slowness Lower Limit - Monopole P&S Shear	75	US/F
SHUL	Label Slowness Upper Limit - Monopole P&S Shear	180	US/F
SLL1	STC Slowness Lower Limit - Lower Dipole	75	US/F
SLL4	STC Slowness Lower Limit - Monopole P&S	40	US/F
SST1	STC Slowness Step - Lower Dipole	4	US/F

SST4	STC Slowness Step - Monopole P&S	2	US/F
SSW1	STC Source Waveform - Lower Dipole	WF_SAM1	
SSW4	STC Source Waveform - Monopole P&S	WF_SAM4	
STLL	Label Slowness Lower Limit - Monopole Stoneley	180	US/F
STUL	Label Slowness Upper Limit - Monopole Stoneley	780	US/F
SUL1	STC Slowness Upper Limit - Lower Dipole	775	US/F
SUL4	STC Slowness Upper Limit - Monopole P&S	240	US/F
SWD1	STC Slowness Width - Lower Dipole	40	US/F
SWD4	STC Slowness Width - Monopole P&S	10	US/F
TBF1	STC Time for Baseline Fill - Lower Dipole	0	US
TBF4	STC Time for Baseline Fill - Monopole P&S	300	US
TLL1	STC Time Lower Limit - Lower Dipole	600	US
TLL4	STC Time Lower Limit - Monopole P&S	150	US
TST1	STC Time Step - Lower Dipole	200	US
TST4	STC Time Step - Monopole P&S	50	US
TUL1	STC Time Upper Limit - Lower Dipole	15912.5	US
TUL4	STC Time Upper Limit - Monopole P&S	3660	US
TWD1	STC Time Width - Lower Dipole	2000	US
TWD4	STC Time Width - Monopole P&S	1000	US
TWI1	STC Integration Time Window - Lower Dipole	1600	US
TWI4	STC Integration Time Window - Monopole P&S	500	US
TWSX	Transmitter Waveform Select X	0	
WFM4	Waveform Mode 4	W1	
BHS	SGT-N: Scintillation Gamma-Ray - N Borehole Status	OPEN	
BS	System and Miscellaneous Bit Size	9.875	IN
DO	Depth Offset for Playback	0.0	M
PP	Playback Processing	NORMAL	

Format: DSST_P_S_LOWER_VDL_COLOR Vertical Scale: 1:200 Graphics File Created: 27-Jun-2002 01:01

OP System Version: 10C0-306

MCM

MEST-B	10C0-306	DTA-A	10C0-306
DSST-B	OP10-KP1	SGT-N	10C0-306
DTC-H	10C0-306		

Input DLIS Files

DEFAULT	FMS_DSI_015LUP	FN:21	PRODUCER	24-Jun-2002 03:28	4050.2 M	3915.3 M
---------	----------------	-------	----------	-------------------	----------	----------

Output DLIS Files

DEFAULT	FMS_DSI_029PUP	FN:41	PRODUCER	27-Jun-2002 01:01
RED2	FMS_DSI_029PUP	FN:42	PRODUCER	27-Jun-2002 01:01

Company: Lamont Doherty

Schlumberger

Well: ODP Leg 203 Site1243B

Field: Equatorial Pacific IMO

Country: Panama

Ocean: Pacific

Dipole Shear Sonic
P&S, Upper/Lower Dipole Shear
Gamma Ray