

GeoVISION Resistivity

1 cm : 2 m

Measured Depth

Location	Total depth:	862.6 m	K.B.	11 m
	Spud date:	24-Jul-02	G.L.	776.4 m
	Runs:	1 To 1	D.F.	11 m
	Permanent datum:	Mean Sea Level	Elev.:	0 m
	Log measured from:	Drill Floor	11 m	above Perm. datum
	Depth reference:	Driller's Pipe Tally		
Service Order no.		Longitude		Latitude
40007682		-125.14735		+44.57076

7.4 m	To	862.6 m	Mag dec:	66.41 deg.	Other services:
Jul-02	To	25-Jul-02	Mag dip:	17.70 deg.	Logging while coring

Casing record

from	to	Size	Density	from	to
787.4 m	862.6 m				

[illegible]Software record

IDEAL Wis

PDE7 Oc 09

5.1

IDF

Vertical Scale: 1:200

Graphics File Created: 12-Oct-2002 20:04

PIP SUMMARY

Ring Samples

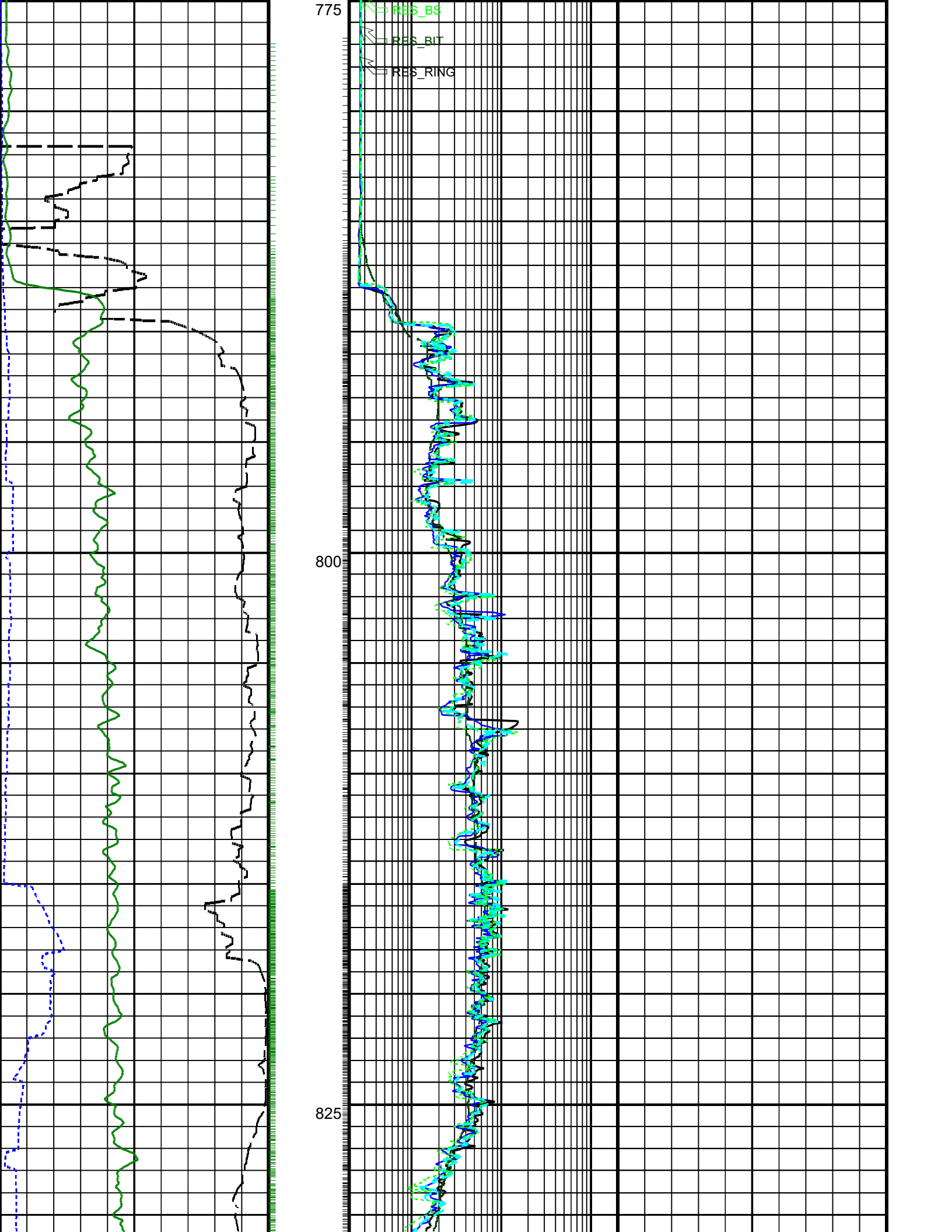
Gamma Ray Samples

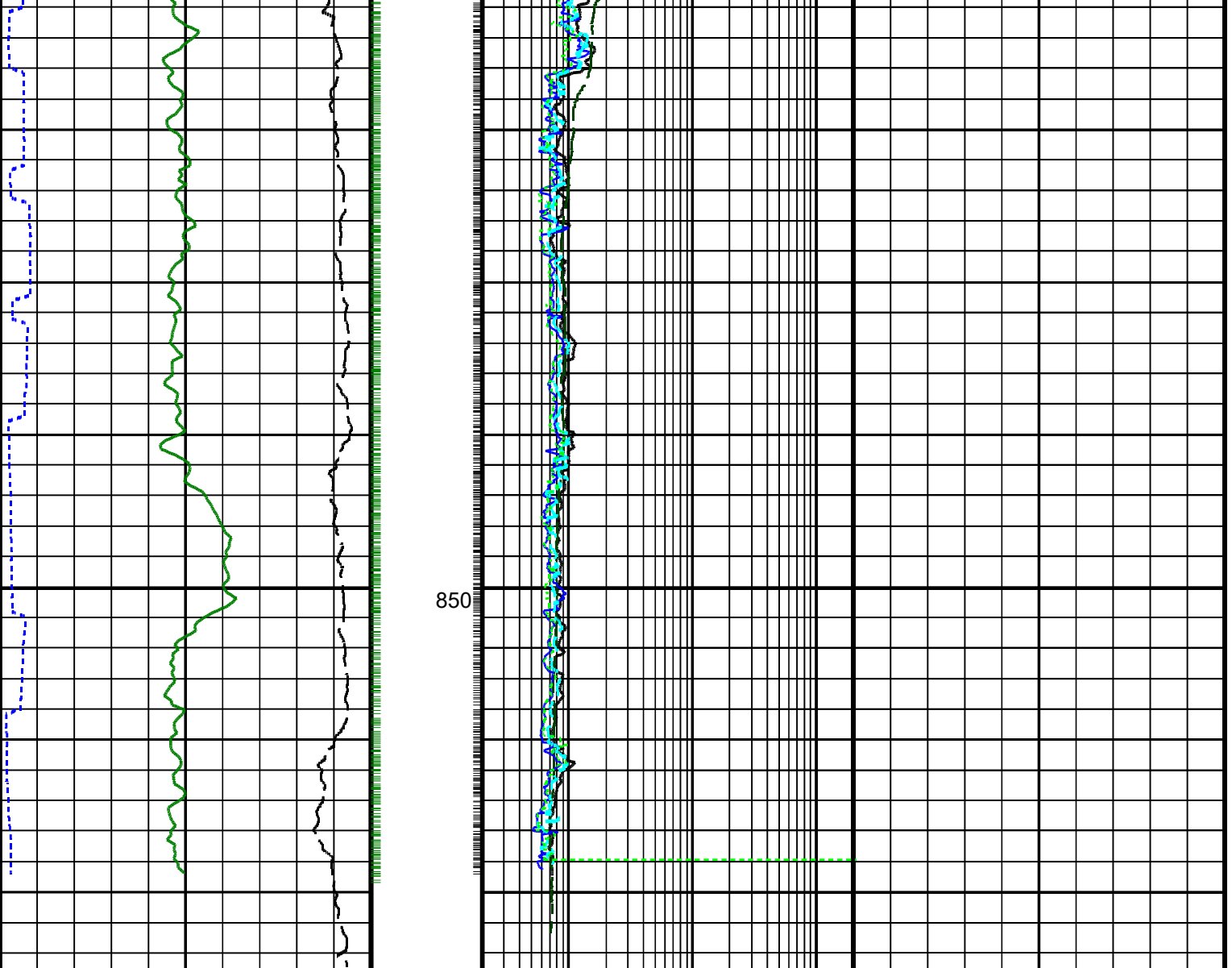
Medium Button Resistivity (RES_BM)		
0.2	(OHMM)	2000
Shallow Button Resistivity (RES_BS)		
0.2	(OHMM)	2000
Deep Button Resistivity (RES_BD)		
0.2	(OHMM)	2000
Bit Resistivity (RES_BIT)		
0.2	(OHMM)	2000
Ring Resistivity (RES_RING)		
0.2	(OHMM)	2000

Ring Resistivity Time After Bit (TAB_		
RAB_RING)		
0	(HR)	10
Rate of Penetration, Averaged over Last		
5ft (ROP5_RM)		
152.4	(M/HR)	0
RAB Gamma Ray (GR_RAB)		
0	(GAPI)	150

TAB RAB RING

RES BM





RAB Gamma Ray (GR_RAB)		
0	(GAPI)	150
Rate of Penetration, Averaged over Last 5ft (ROP5_RM)		
152.4	(M/HR)	0
Ring Resistivity Time After Bit (TAB_RAB_RING)		
0	(HR)	10

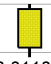
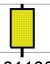
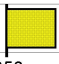
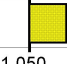


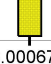
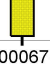

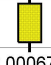
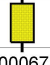

Ring Resistivity (RES_RING)		
0.2	(OHMM)	2000
Bit Resistivity (RES_BIT)		
0.2	(OHMM)	2000
Deep Button Resistivity (RES_BD)		
0.2	(OHMM)	2000
Shallow Button Resistivity (RES_BS)		
0.2	(OHMM)	2000
Medium Button Resistivity (RES_BM)		
0.2	(OHMM)	2000

PIP SUMMARY <div> <div>+</div> Ring Samples </div> <div> <div>+</div> Gamma Ray Samples </div>	
IDEAL Version: ID7_0C_02 IDF	

Master: 3-Jul-2002 22:22

8.25-in. Resistivity At-the-Bit Calibration

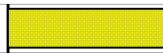
Resistivity: Fixture

Accuracy: Factors											
Phase	Ring/T1 factor		Value	Phase	Ring/T2 factor		Value	Phase	M0/T1 factor		Value
Master			0.01129	Master			0.01110	Master			1.102
	0.009500 (Minimum)	0.01100 (Nominal)	0.01250 (Maximum)		0.009500 (Minimum)	0.01100 (Nominal)	0.01250 (Maximum)		0.9000 (Minimum)	1.050 (Nominal)	1.200 (Maximum)
Phase	M0/T2 factor		Value	Phase	M2/T1 factor		Value	Phase	M2/T2 factor		Value
Master			1.090	Master			0.9831	Master			0.9945
	0.9000 (Minimum)	1.050 (Nominal)	1.200 (Maximum)		0.8500 (Minimum)	1.000 (Nominal)	1.150 (Maximum)		0.8500 (Minimum)	1.000 (Nominal)	1.150 (Maximum)
Phase	BTN shallow/T1 factor		Value	Phase	BTN shallow/T2 factor		Value	Phase	BTN medium/T1 factor		Value
Master			0.0006693	Master			0.0006572	Master			0.0006662
	0.0005700 (Minimum)	0.0006700 (Nominal)	0.0007700 (Maximum)		0.0005700 (Minimum)	0.0006700 (Nominal)	0.0007700 (Maximum)		0.0005700 (Minimum)	0.0006700 (Nominal)	0.0007700 (Maximum)
Phase	BTN medium/T2 factor		Value	Phase	BTN deep/T1 factor		Value	Phase	BTN deep/T2 factor		Value
Master			0.0006532	Master			0.0006810	Master			0.0006654
	0.0005700 (Minimum)	0.0006700 (Nominal)	0.0007700 (Maximum)		0.0005700 (Minimum)	0.0006700 (Nominal)	0.0007700 (Maximum)		0.0005700 (Minimum)	0.0006700 (Nominal)	0.0007700 (Maximum)

Master: Calibration out of date 10-Dec-2001 23:18

8.25-in. Resistivity At-the-Bit Calibration

Gamma Ray: Blanket

Gamma Ray: Blanket				
Phase	Gamma ray factor			Value
Master				8.525
	6.500 (Minimum)	8.000 (Nominal)	9.500 (Maximum)	

Company: Lamont Doherty

Schlumberger

Well: ODP Leg 204 Site 1249B

Field: Hydrate Ridge

Ocean: Pacific

State: Oregon

GeoVISION Resistivity

1 cm : 2 m

Measured Depth

