

Well: ODP Leg 204 Site 1249B
Field: Hydrate Ridge
Ocean: Pacific
State: Oregon

Ocean: Pacific				
Field:		Hydrate Ridge		
Location:		44.57076 E ; 125.14735 W		
Well:		ODP Leg 204 Site 1249B		
Company: Lamont Doherty				
<div>GeoVISION Resistivity - Image</div> <div>1 cm : 2 m</div> <div>Measured Depth</div>				
Location		Total depth: 862.6 m		
Runs:		Spud date: 24-Jul-02		
Permanent datum:		1 To 1		
Log measured from:		Elevation		
Depth reference:		K.B. 11 m		
Drill Floor		G.L. 776.4 m		
Driller's Pipe Tally		D.F. 11 m		
Mean Sea Level		Elev.: 0 m		
11 m		above Perm. datum		
Service Order no.		Longitude		
40007682		Latitude		
		-125.14735 +44.57076		

Depth logged:	787.4 m	To	862.6 m	Mag decl:	66.41 deg.	Other services: Logging while coring
Date logged:	24-Jul-02	To	25-Jul-02	Mag dip:	17.70 deg.	

Bore hole record	Casing record
------------------	---------------

Hole size	from	to	Size	Density	from	to
9.875 in.	787.4 m	862.6 m				

[illegible]

Surface equipment	Software record
-------------------	-----------------

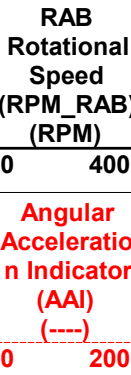
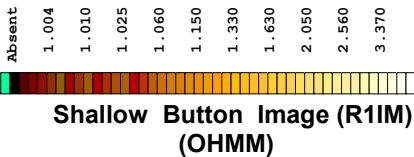
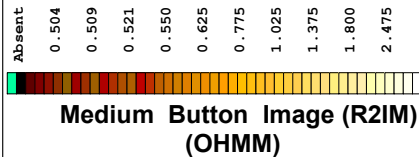
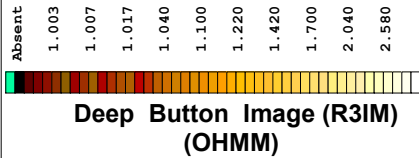
Unit	Downhole Lab	IDEAL Wis	7.0_c2		
Depth system	PDE	SPM	7_0c_09		

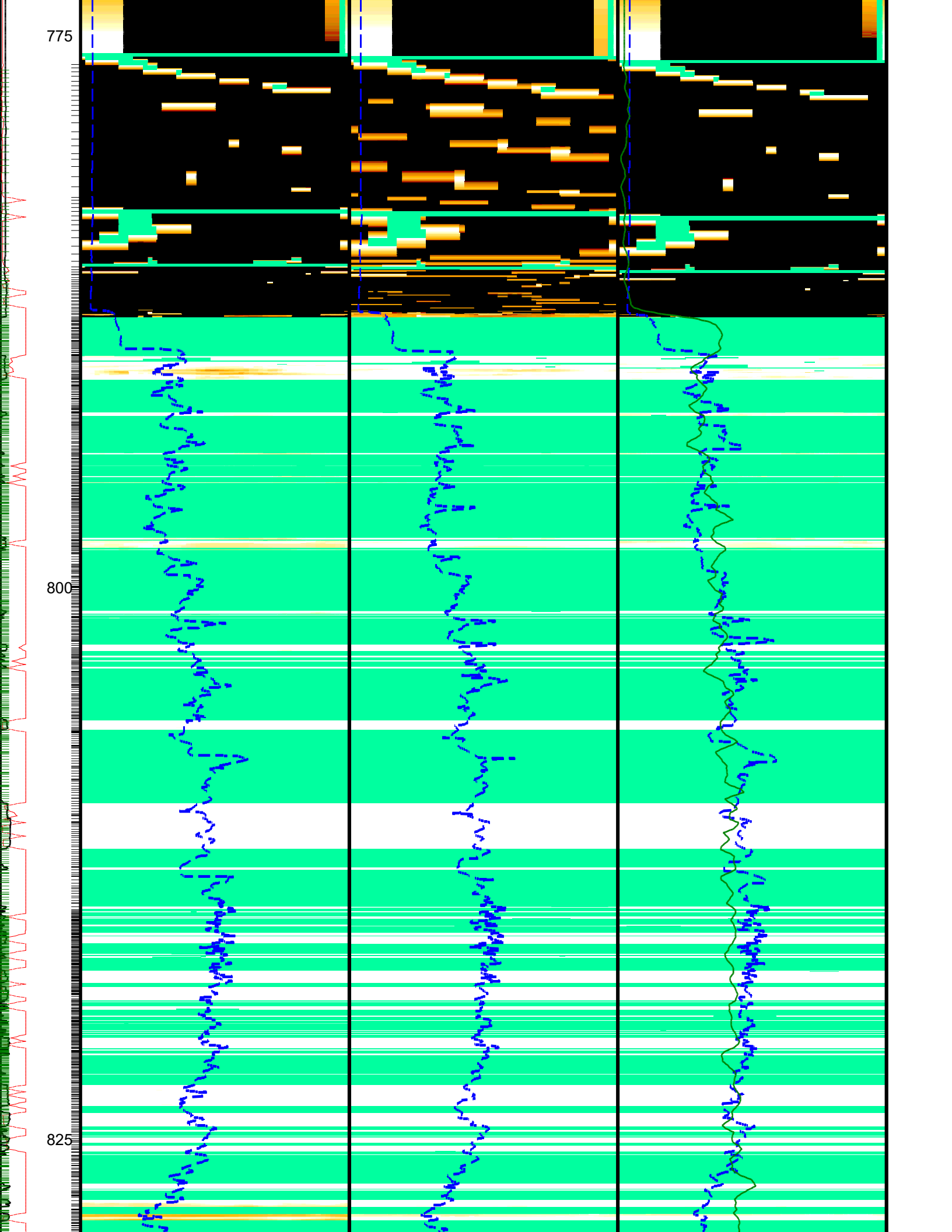
		LWD	5.1	
		MWD		

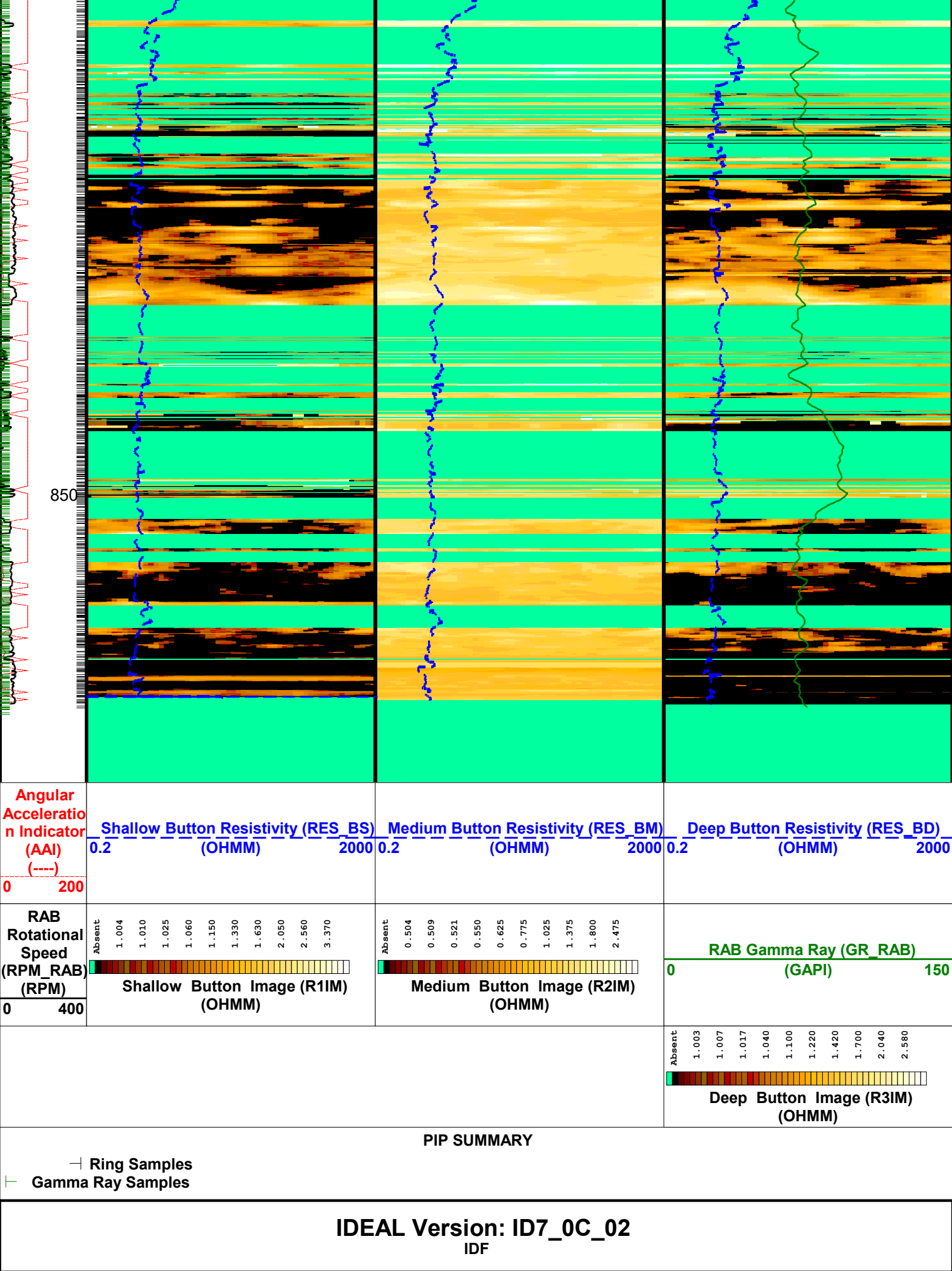
IDF

Format: GEOVIS_RES_IMAGE Vertical Scale: 1:200 Graphics File Created: 12-Oct-2002 20:06

- Ring Samples
- Gamma Ray Samples

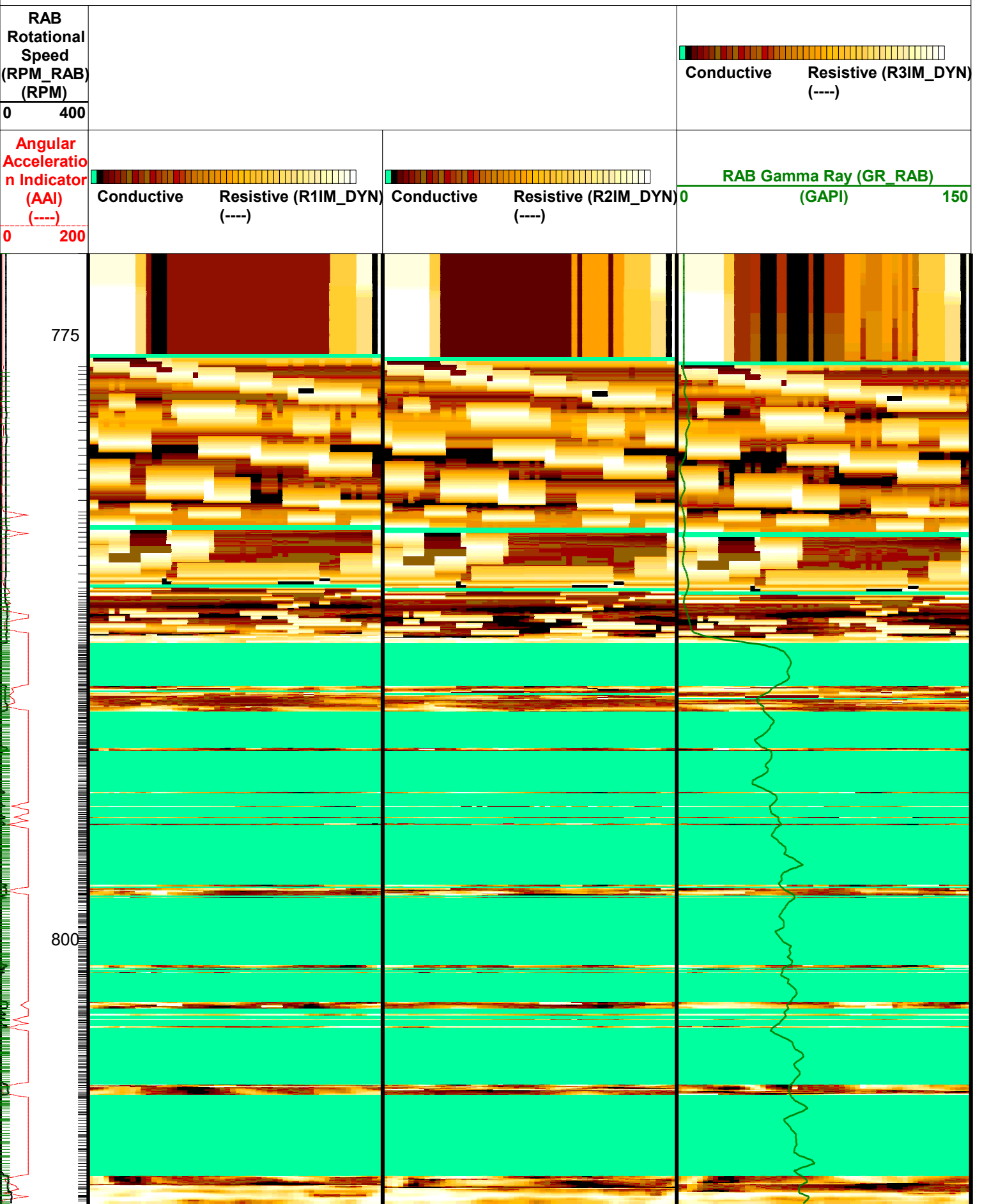


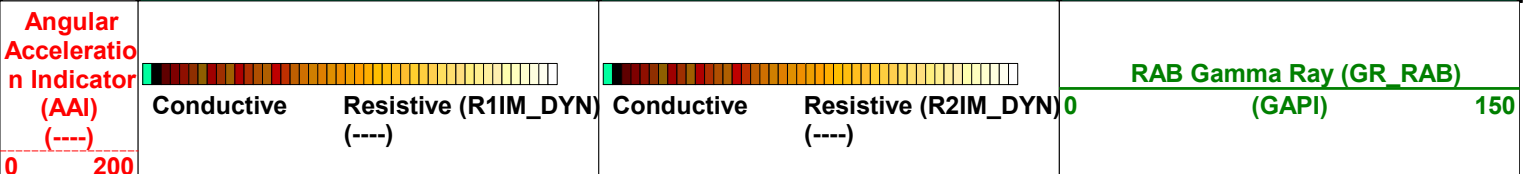
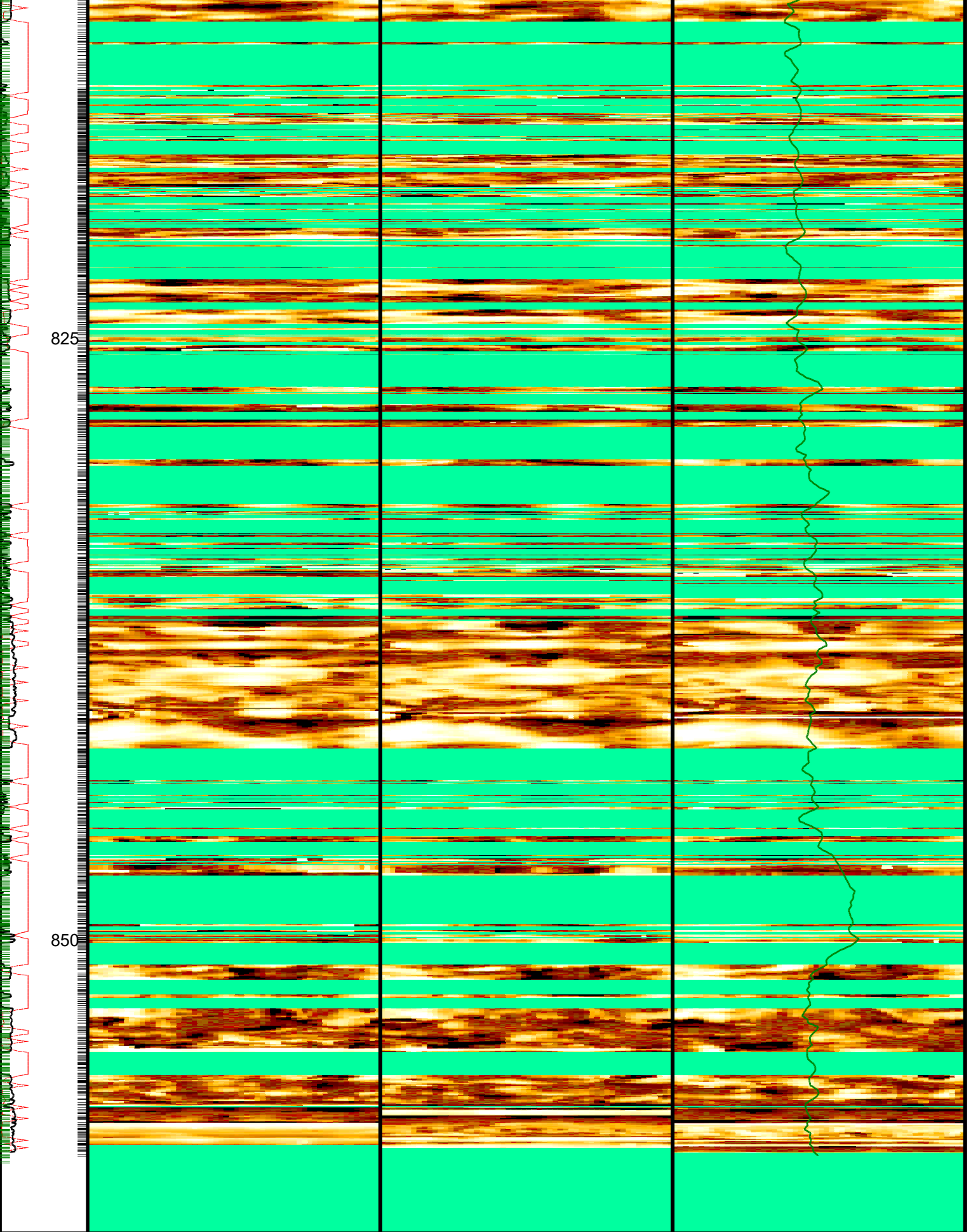




Graphics File Created: 12-Oct-2002 20:06

Gamma Ray Samples





Company:	Lamont Doherty	Schlumberger
Well:	ODP Leg 204 Site 1249B	
Field:	Hydrate Ridge	
Ocean:	Pacific	
State:	Oregon	
GeoVISION Resistivity Image 1 cm : 2 m Measured Depth		