

Well: ODP Leg 204 Site 1251A  
Field: Hydrate Ridge  
Ocean: Pacific  
State: Oregon

Ocean: Pacific			
Field: Hydrate Ridge			
Location: 44.57033 E ; 125.07421 W			
Well: ODP Leg 204 Site 1251A			
Company: Lamont Doherty			
VISION Azimuthal Density and Neutron - Image			
1 cm : 2 m			
Measured Depth			
Location			
Total depth:	1608.6 m		
Spud date:	22-Jul-02		
Runs:	1 To 1		
Permanent datum:	Mean Sea Level		
Log measured from:	Drill Floor		
Depth reference:	Driller's Pipe Tally		
Service Order no.	Longitude	Latitude	
40007682	-125.07421	+44.57033	

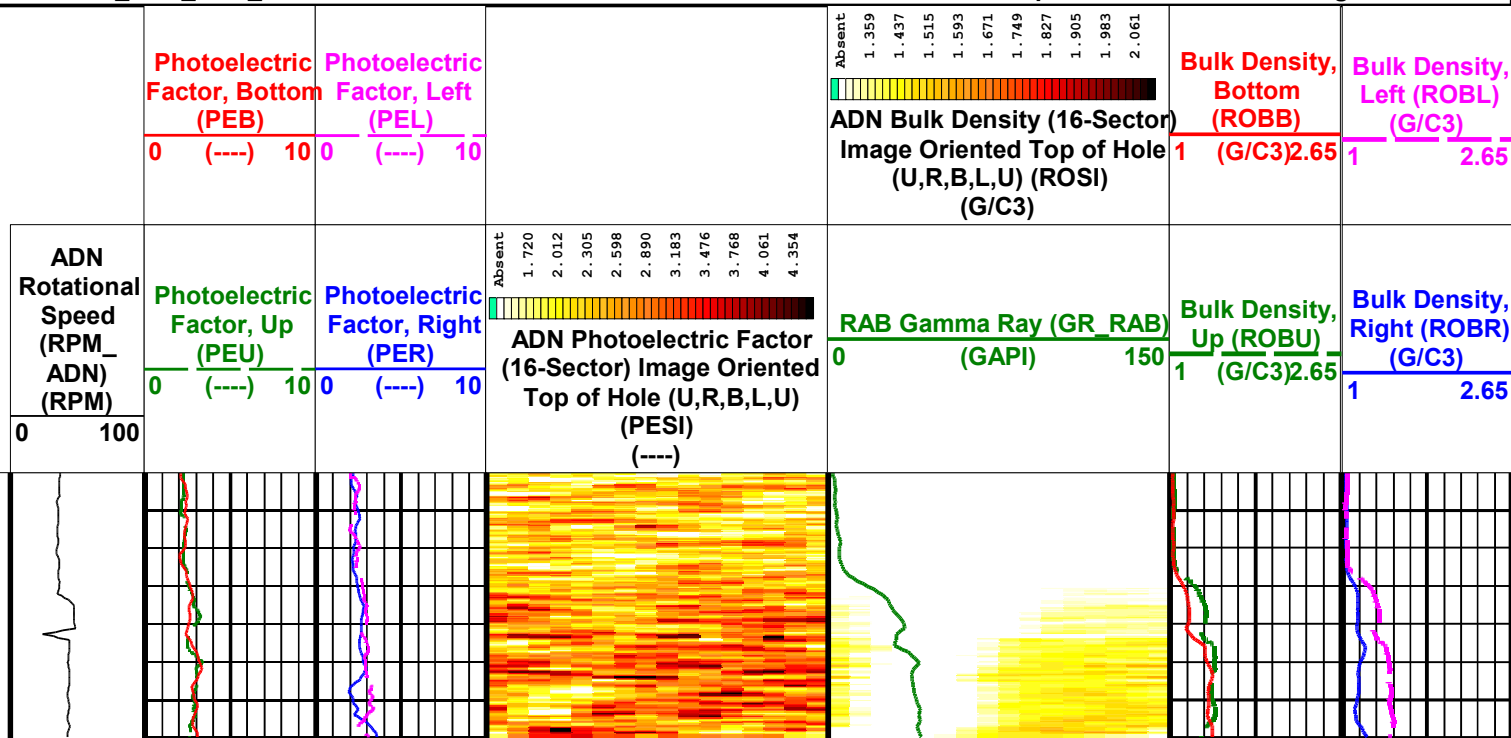
Depth logged:	1216.8 m	To 1582.0 m	Mag decl:	66.41 deg.	Other services:	
Date logged:	22-Jul-02	To 22-Jul-02	Mag dip:	17.70 deg.	DWOB, DTOR, MWC	
Bore hole record			Casing record			
Hole size	from	to	Size	Density	from	to
9.875 in.	1216.8 m	1608.6 m				
Type	Mud record		Borehole deviation record			
	from	to	Min	Max	from	to
Seawater	1216.8 m	1608.6 m	0 deg.	0 deg.	1216.8 m	1608.6 m
Surface equipment			Software record			
Unit	Downhole Lab	IDEAL Wis	7.0_c2			
Depth system	PDE	SPM	7_0c_09			
		LWD	6.1, 8.0, 6.9			
		MWD	6.1			

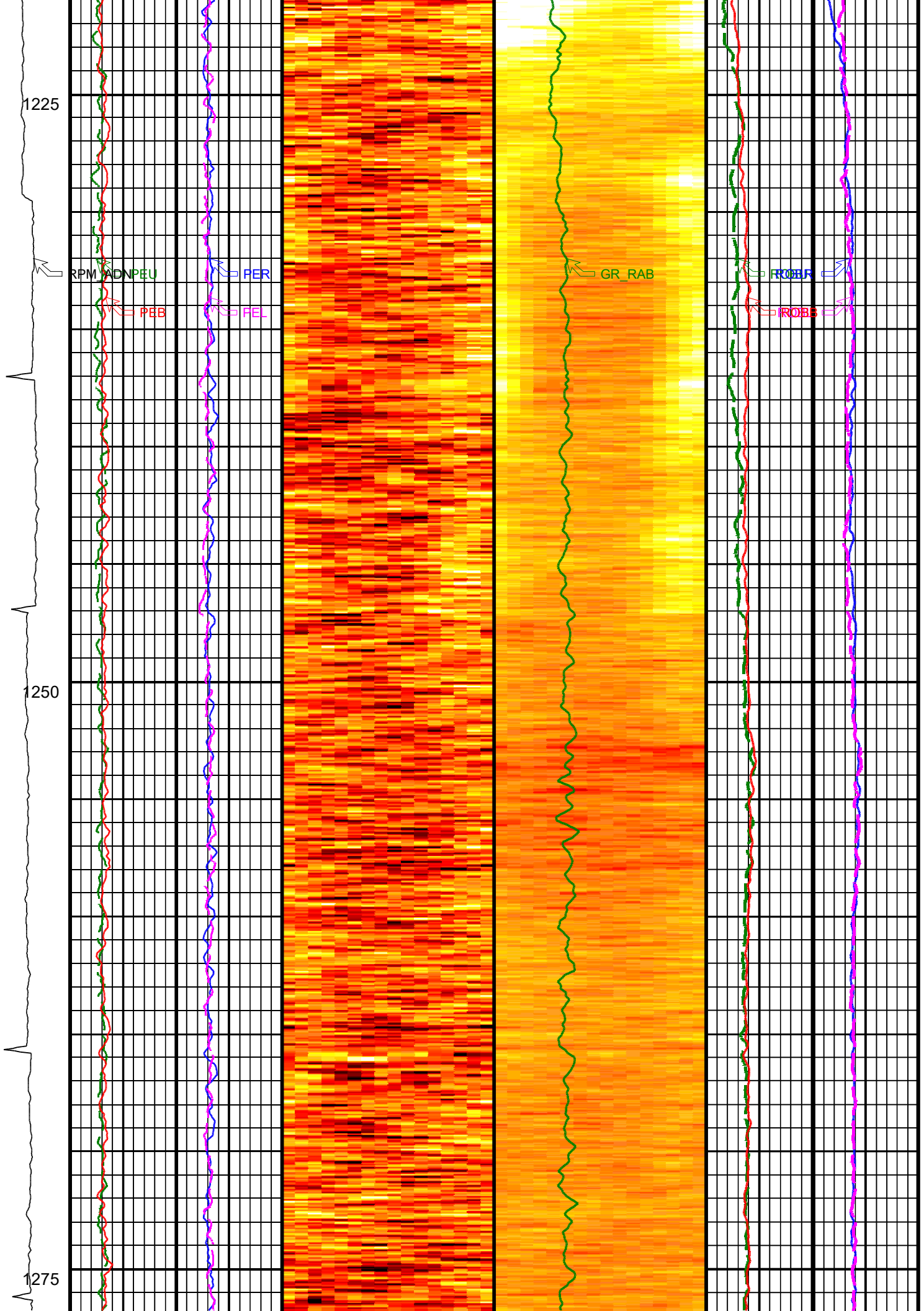
## IDF

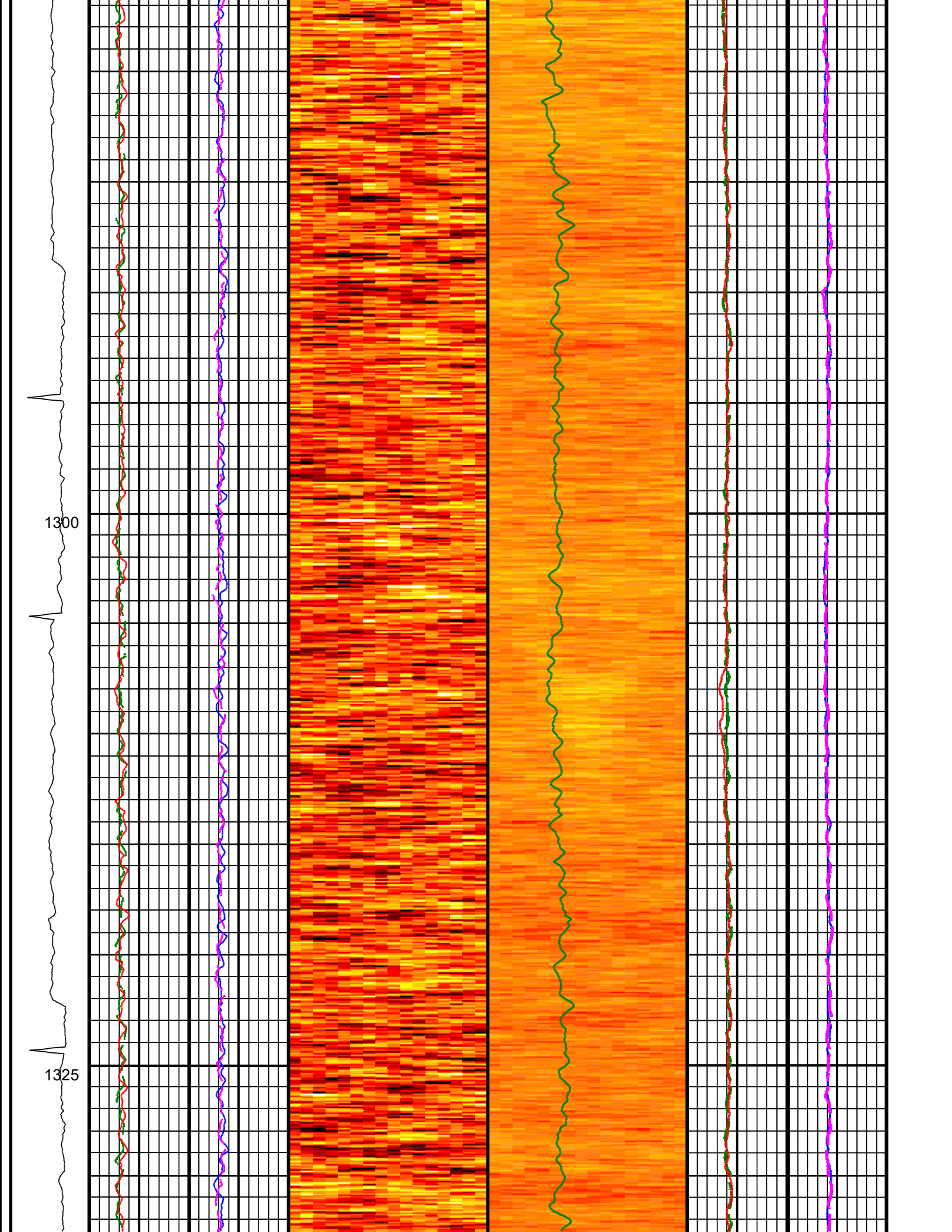
Graphics File Created: 13-Aug-2002 13:40

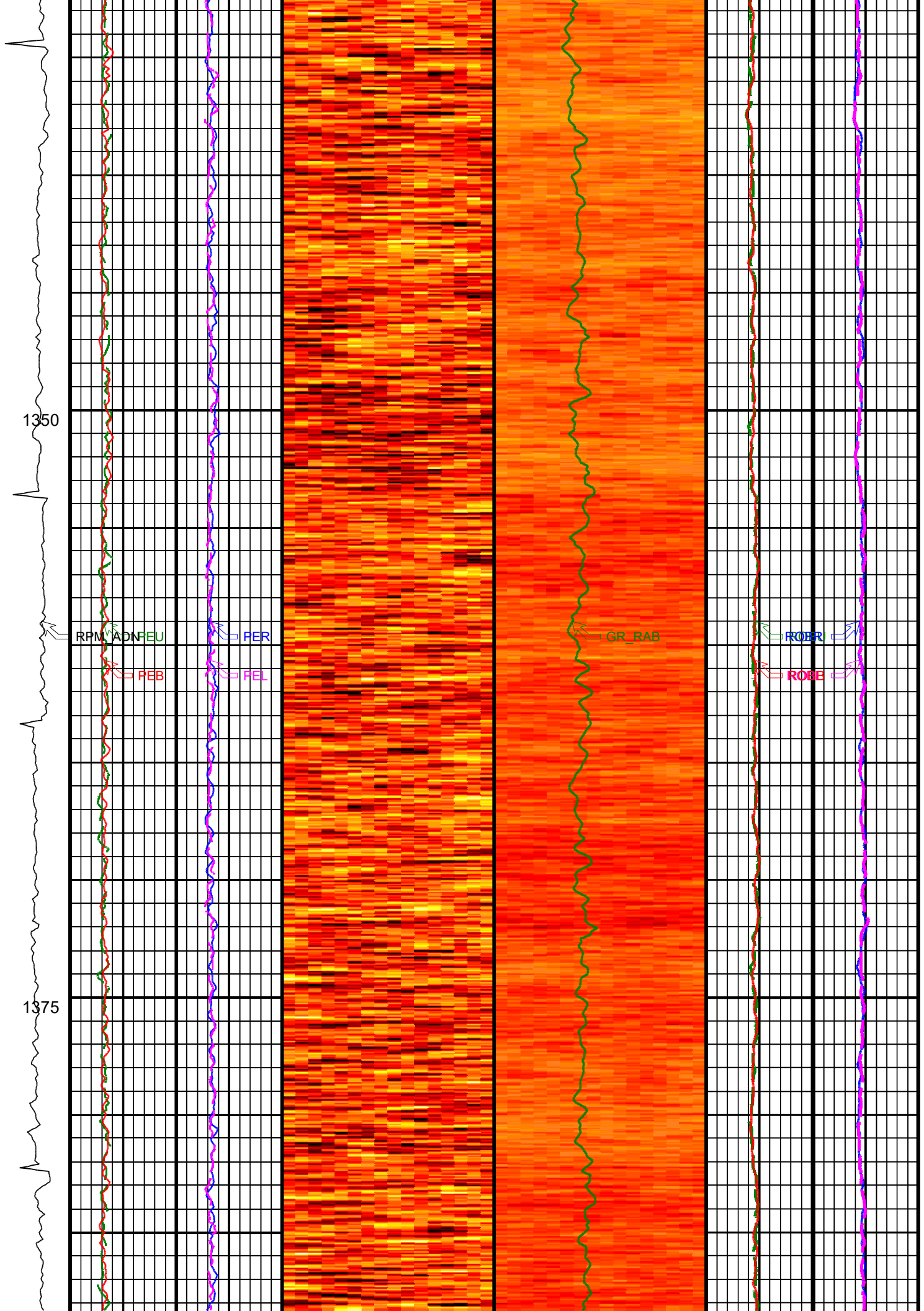
**Vertical Scale: 1:200**

**Format: V\_DEN\_NEU\_IMAGE**

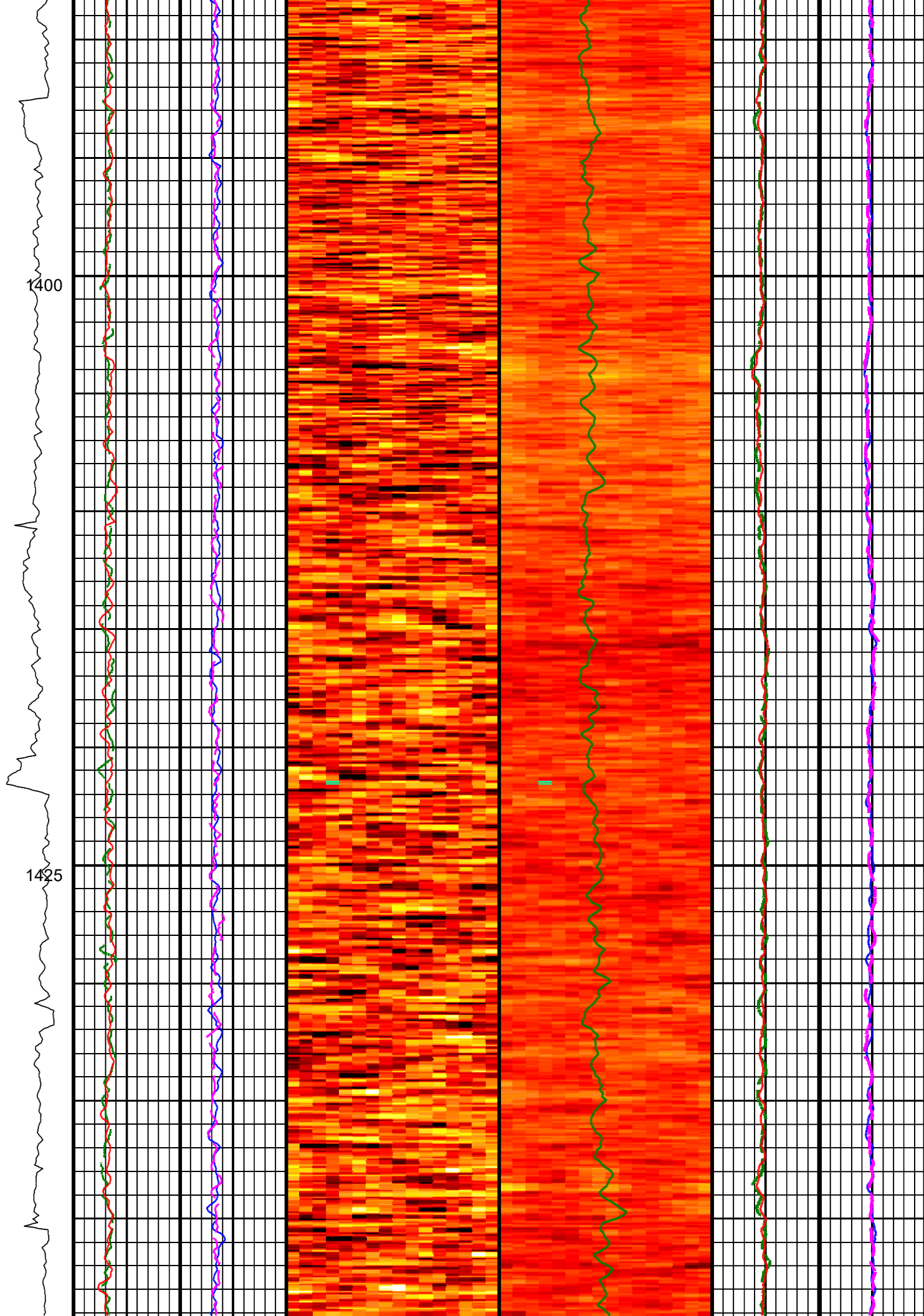


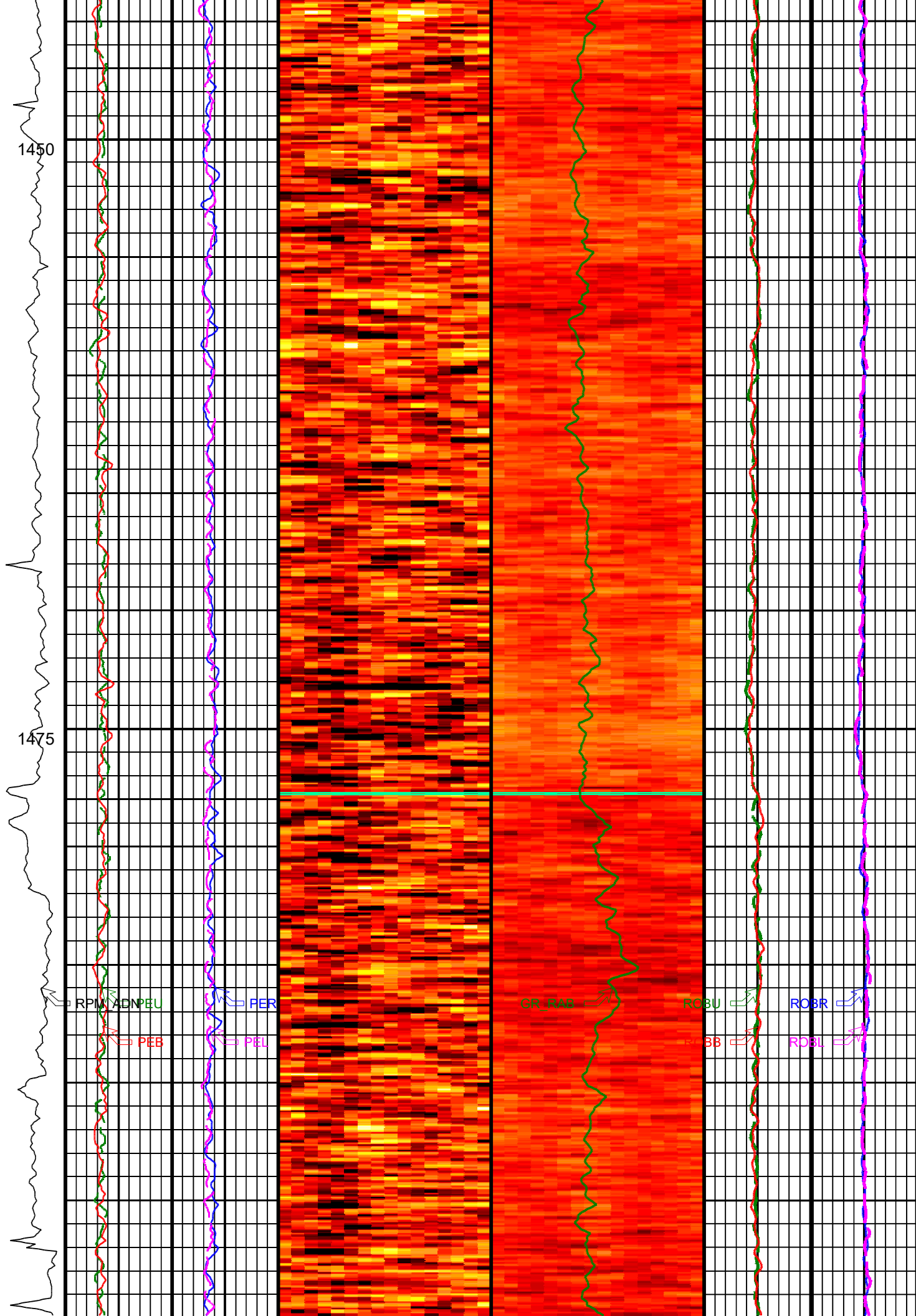


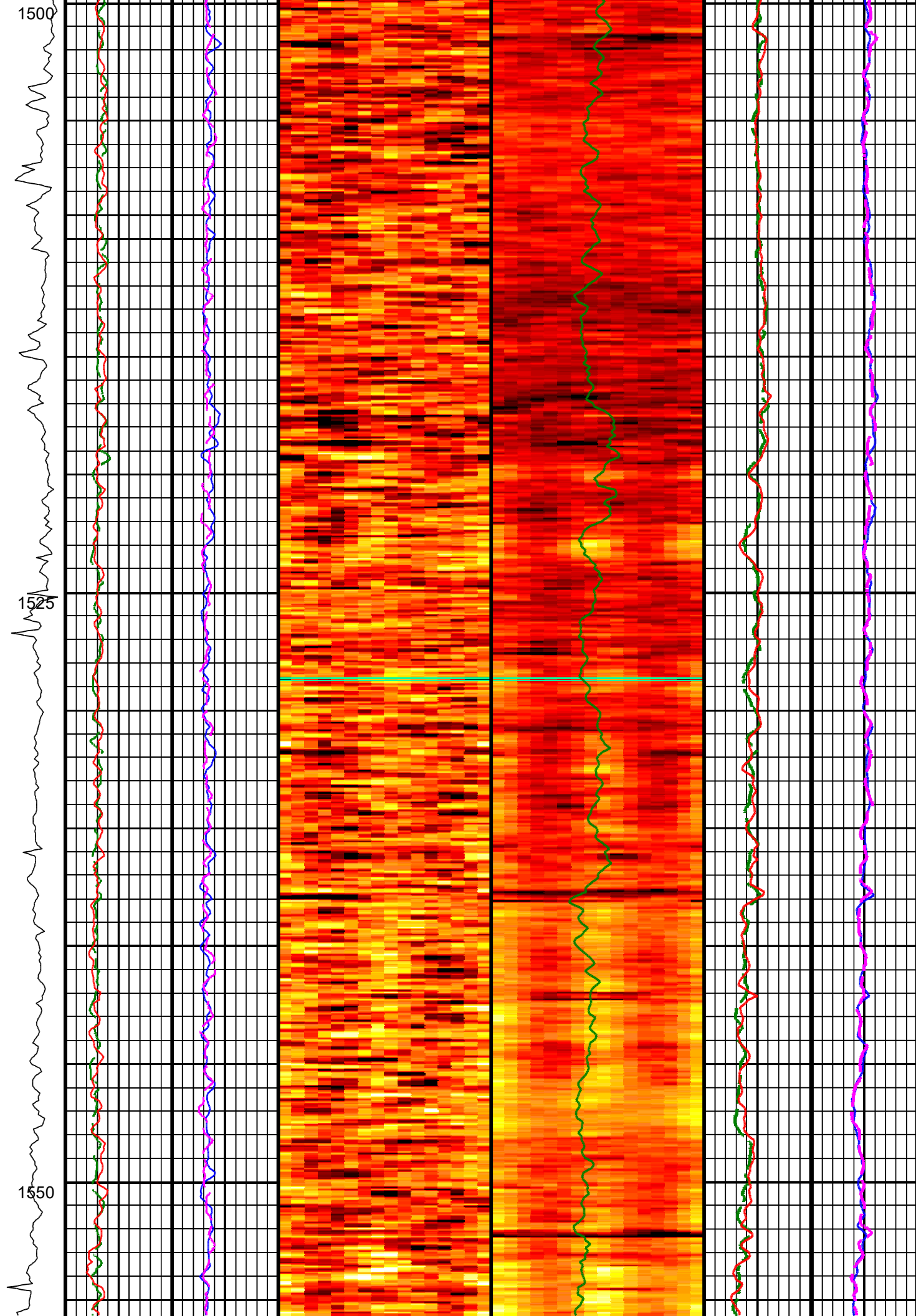


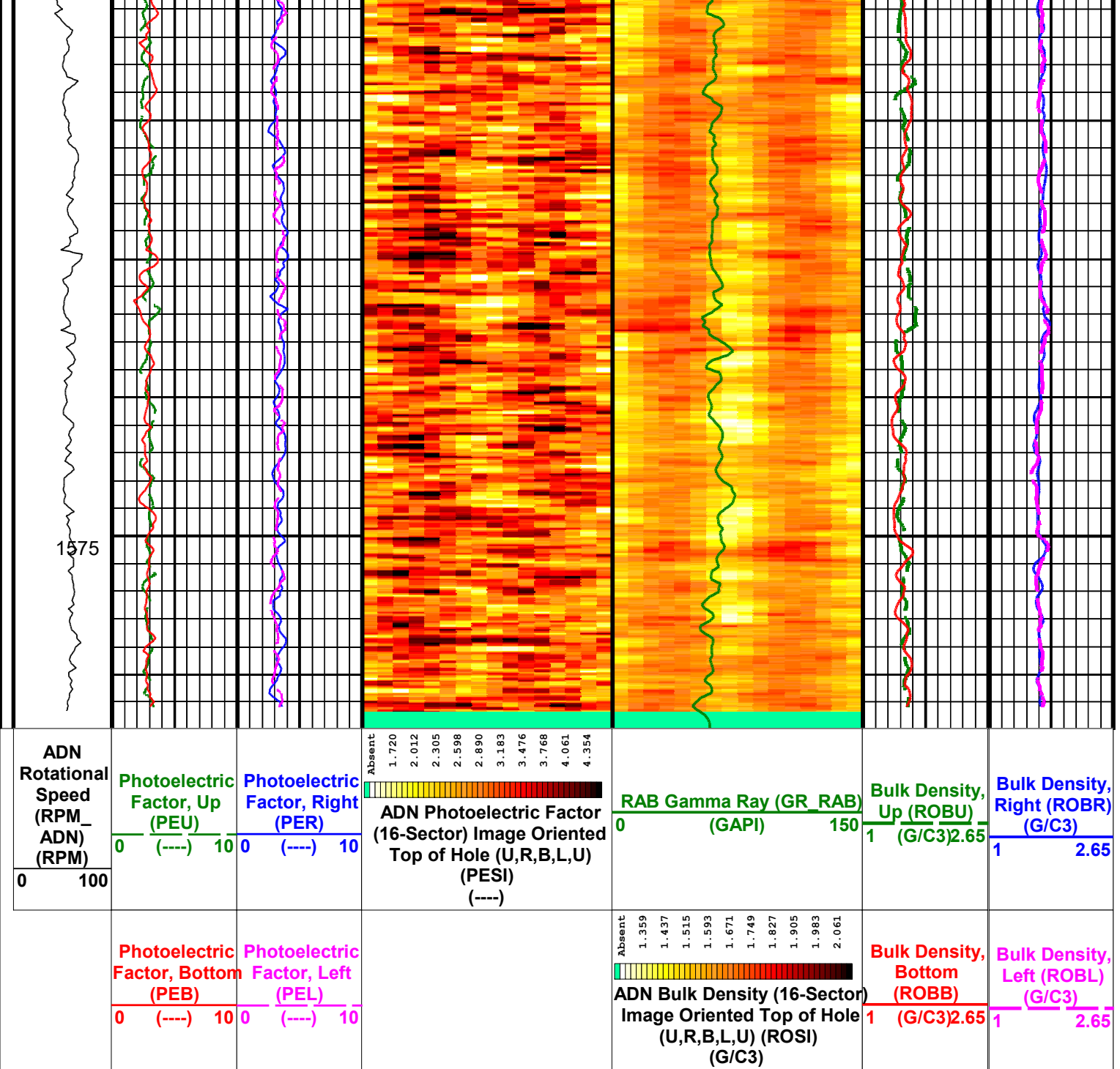












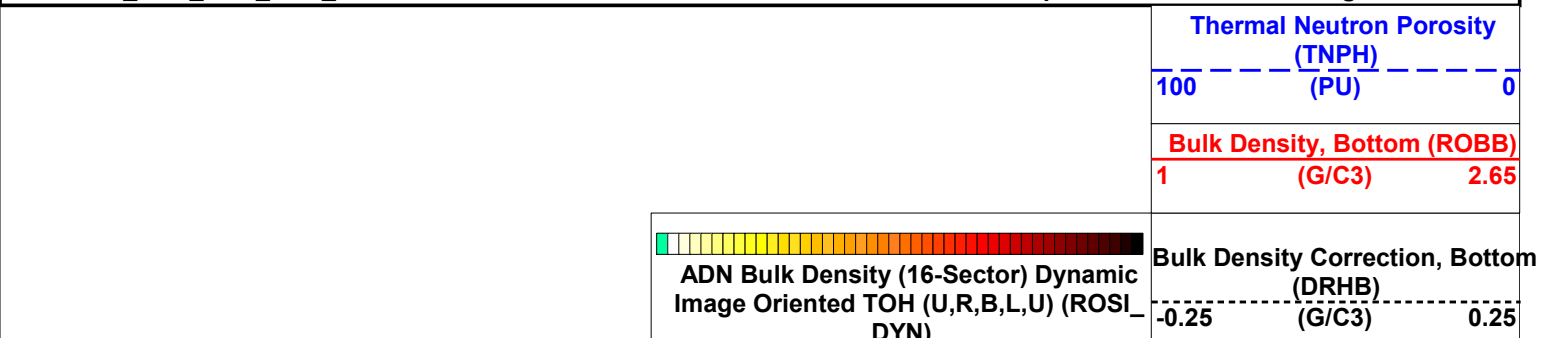
IDEAL Version: ID7\_0C\_02  
IDF

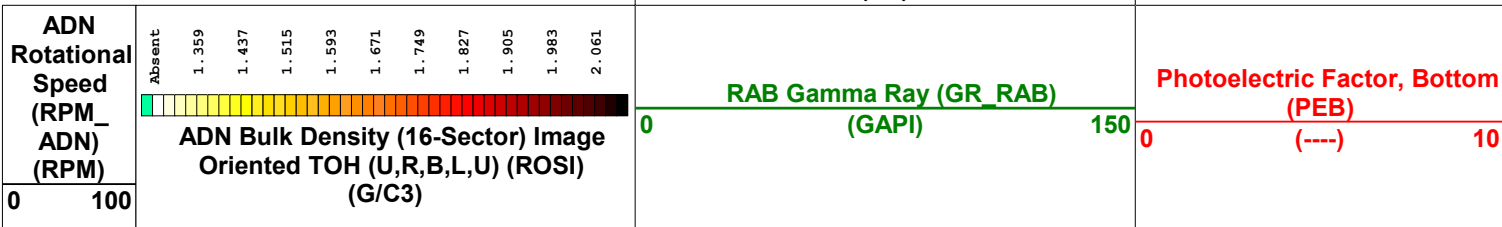
IDEAL Version: ID7\_0C\_02  
IDF

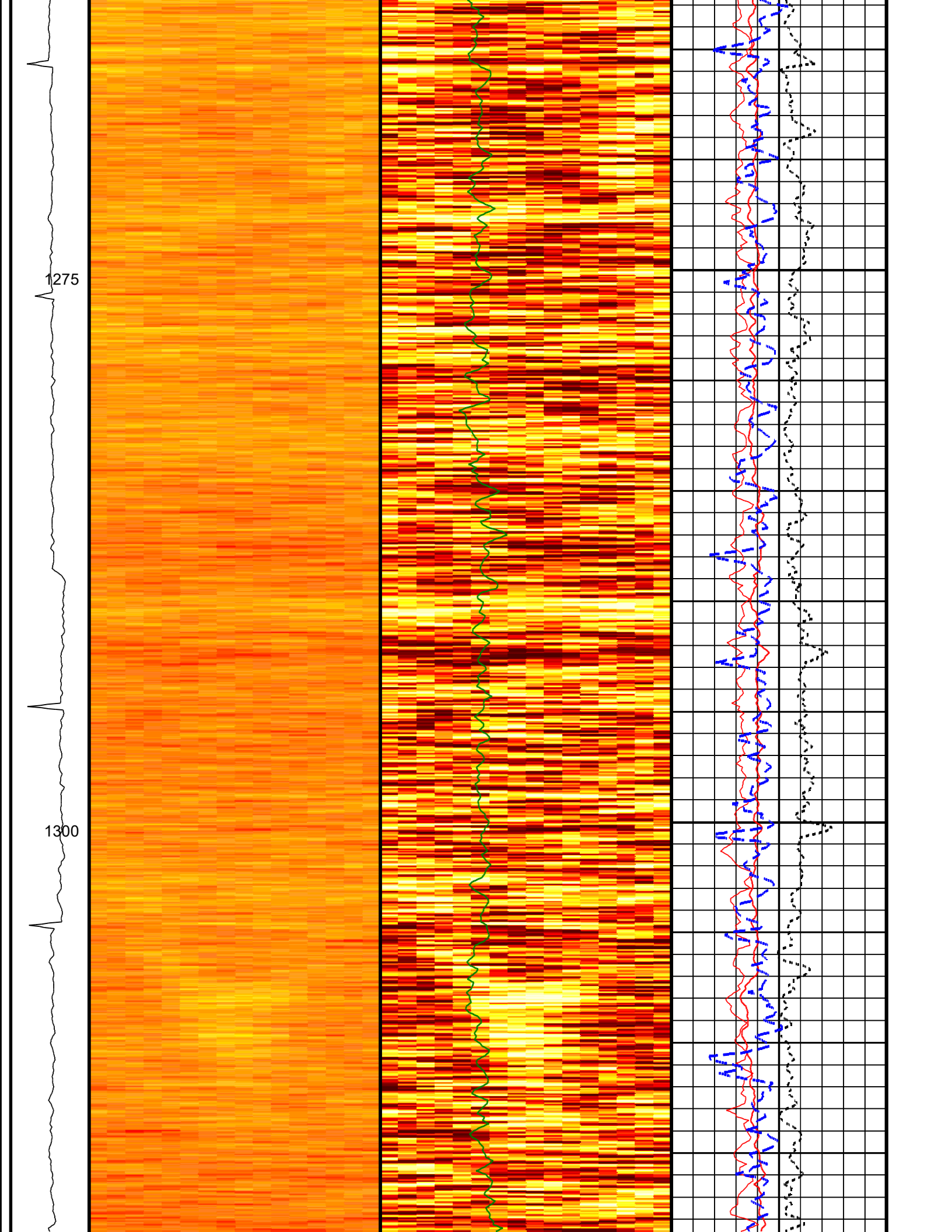
Format: V\_DEN\_NEU\_DYN\_IMAGE

Vertical Scale: 1:200

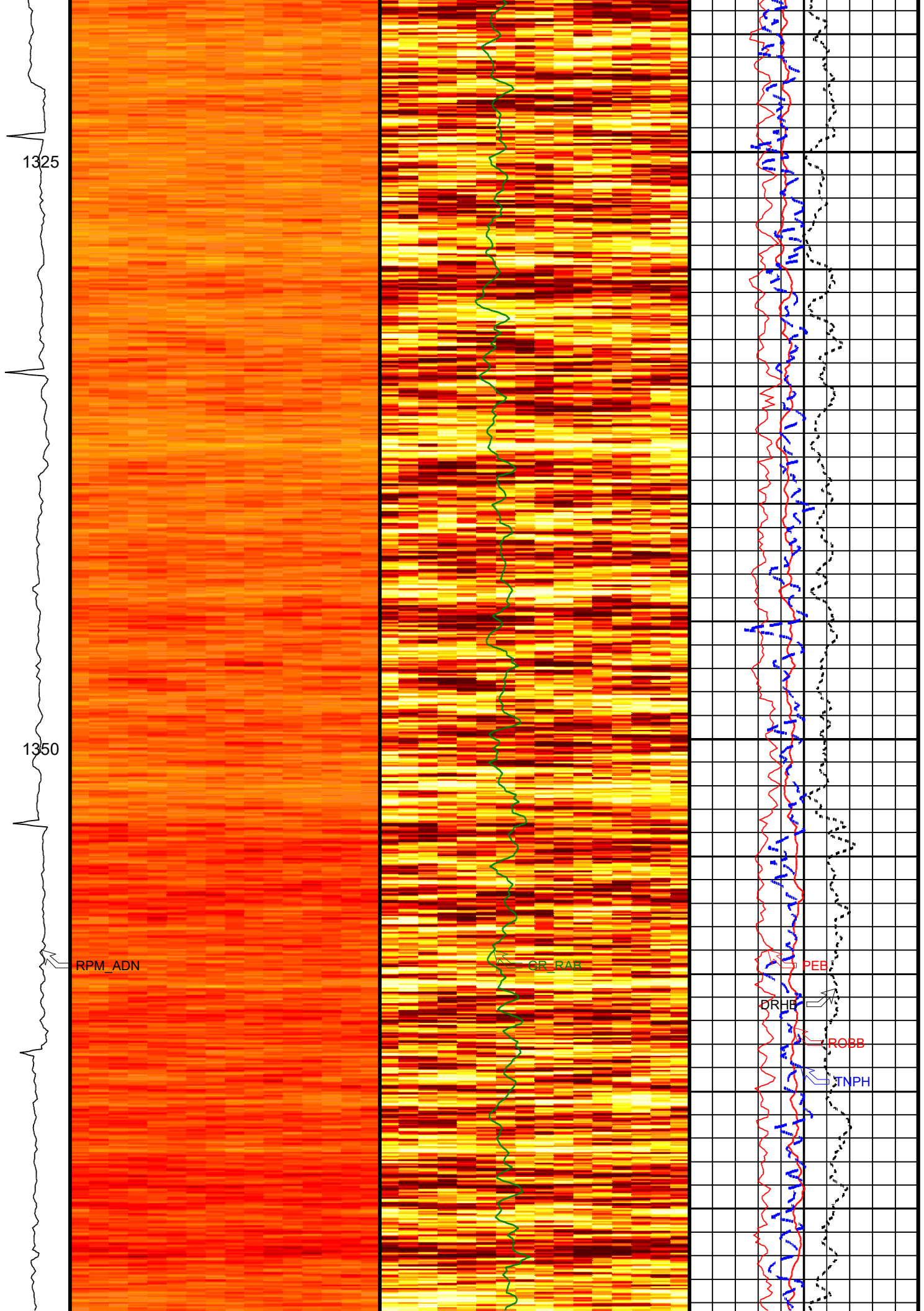
Graphics File Created: 13-Aug-2002 13:39

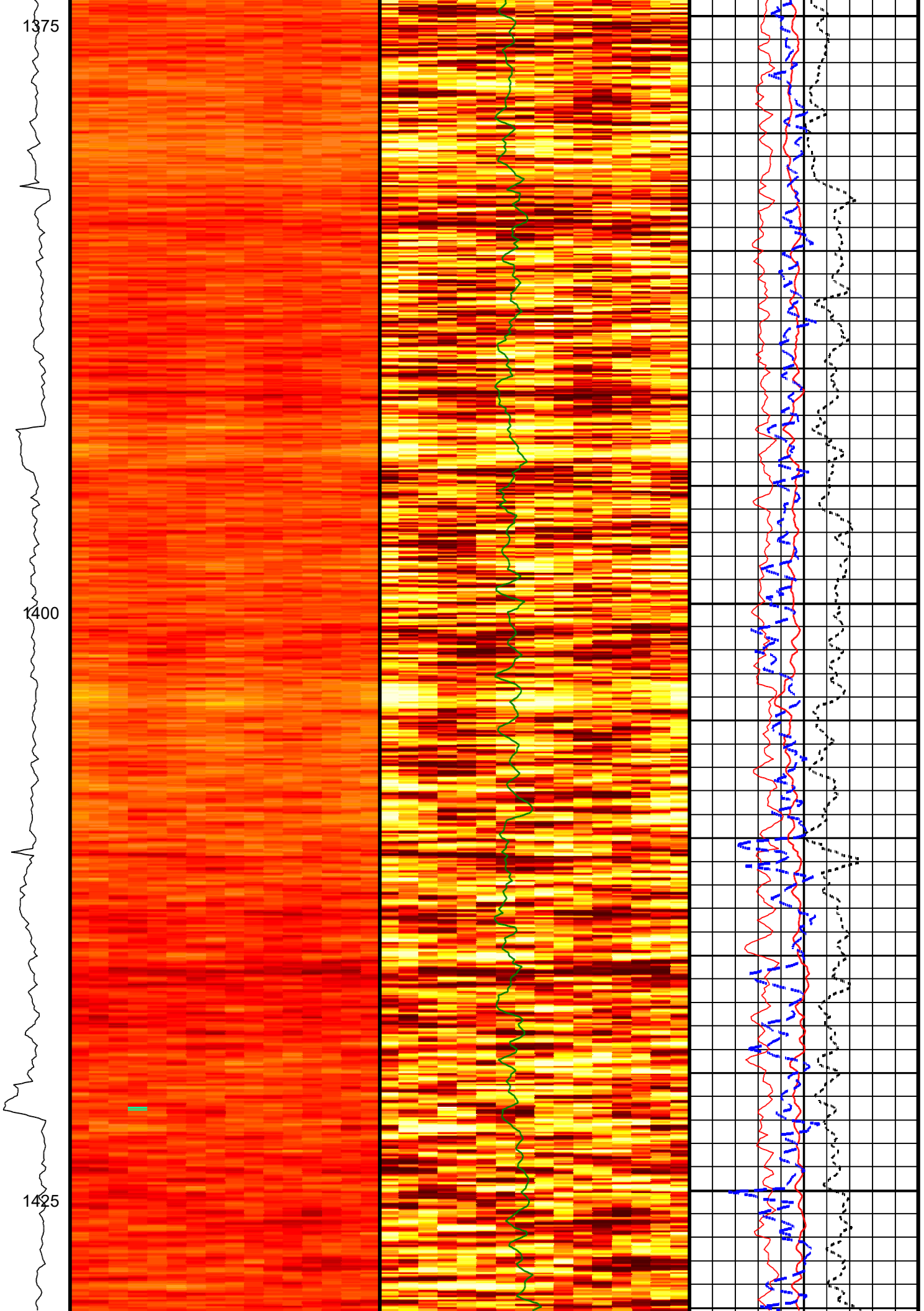


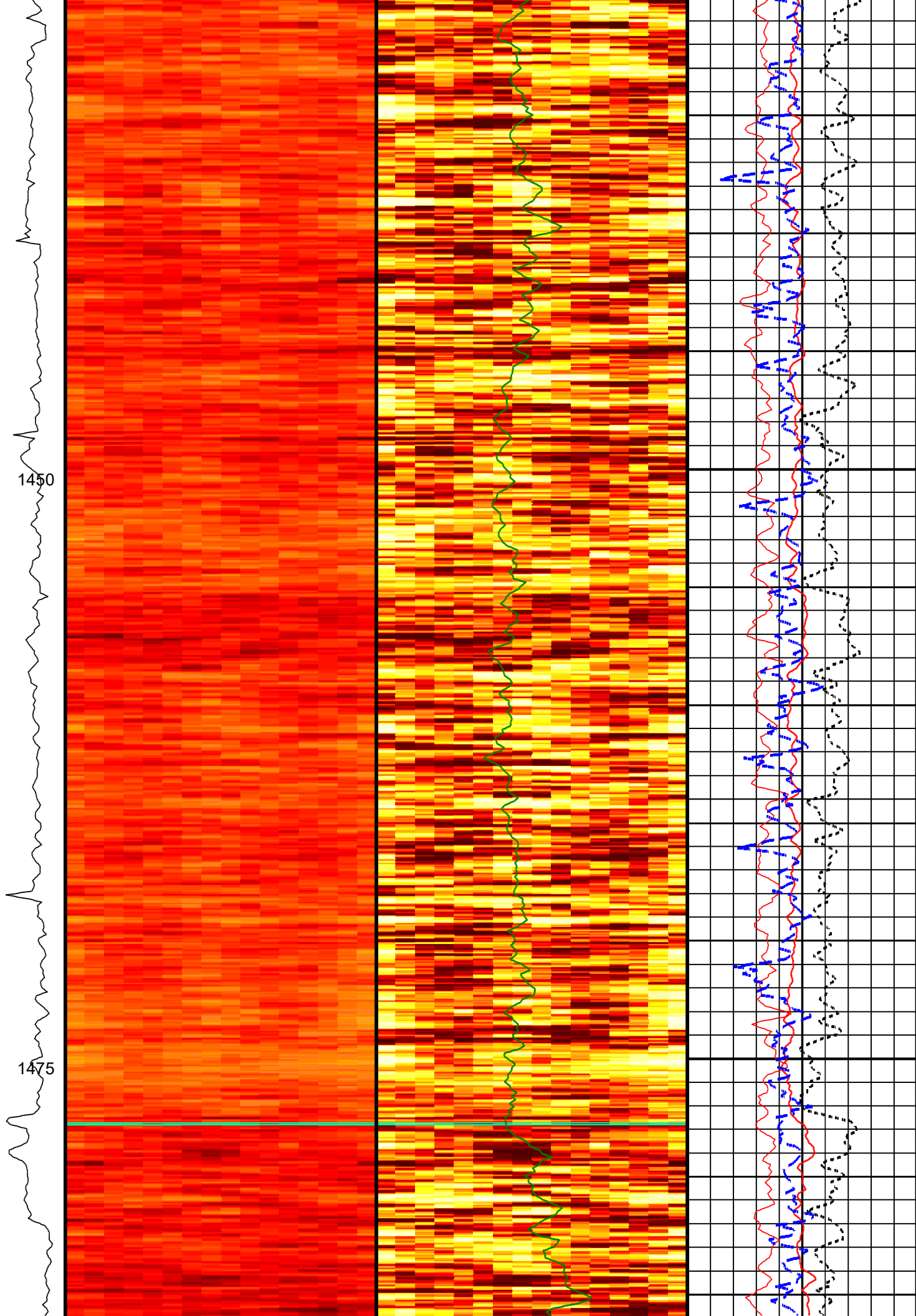


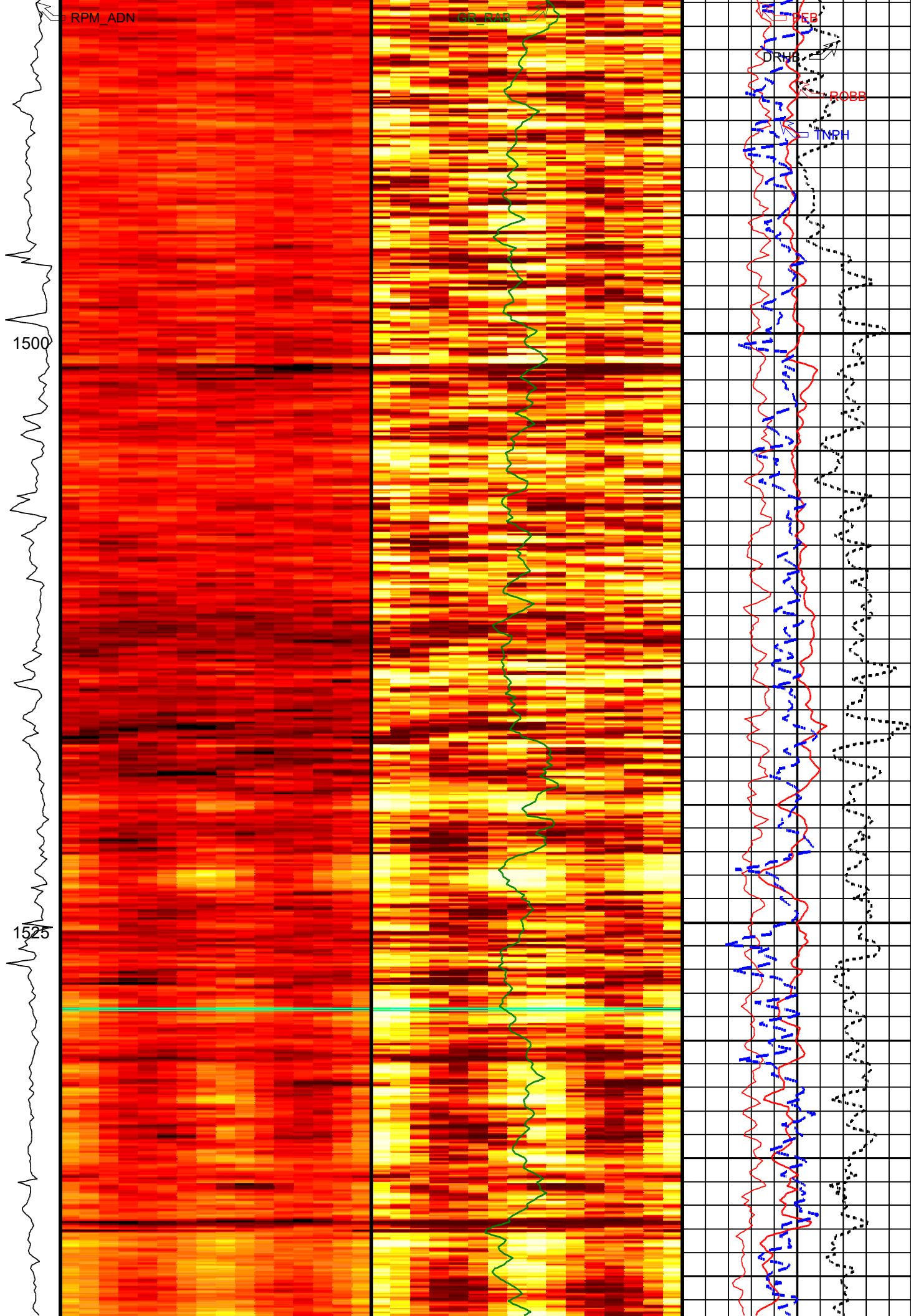


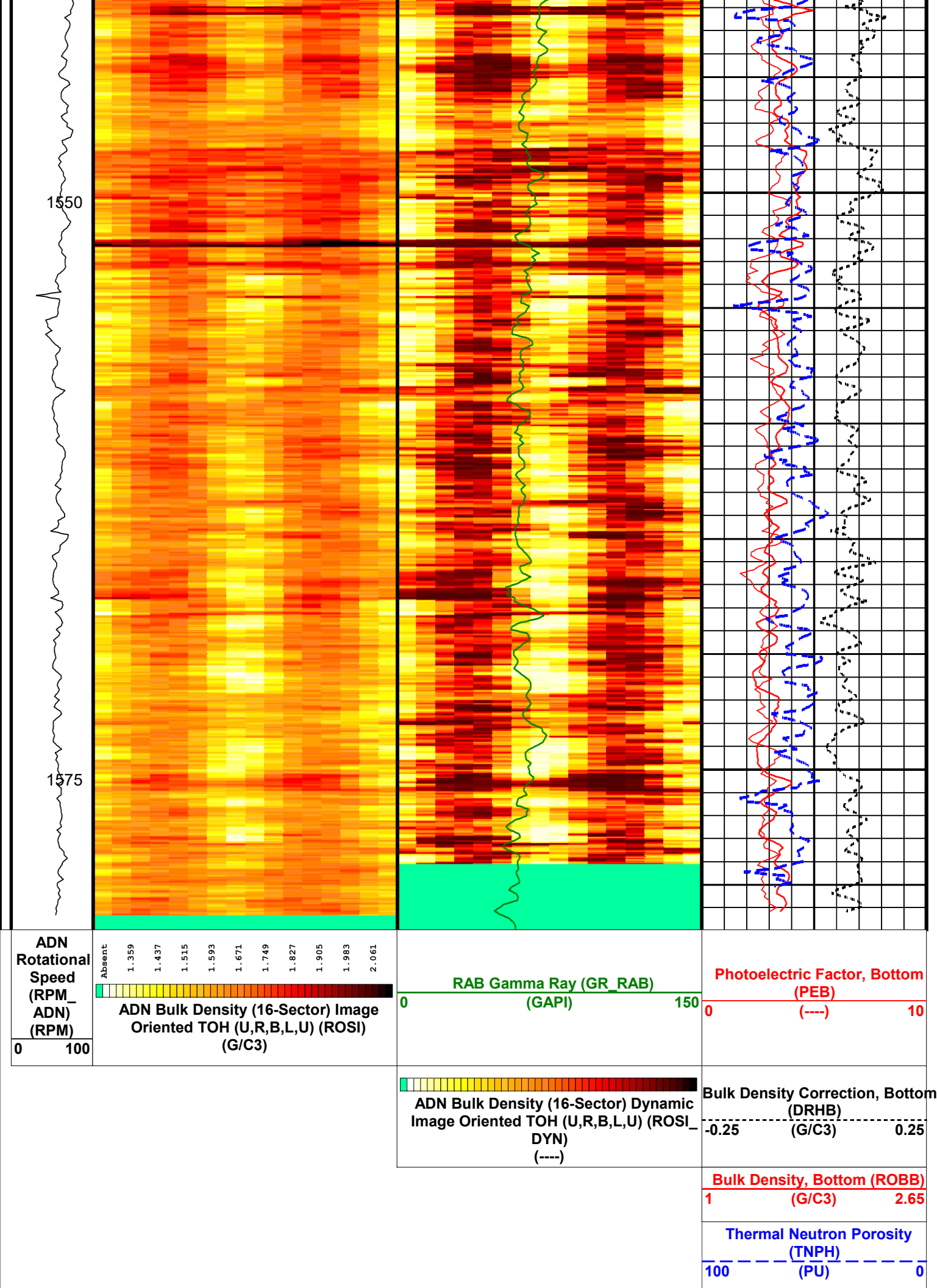












Company: **Lamont Doherty**

**Schlumberger**

Well: **ODP Leg 204 Site 1251A**

Field: **Hydrate Ridge**

Ocean: **Pacific**

State: **Oregon**

**VISION Azimuthal Density and Neutron - Image**

**1 cm : 2 m**

**Measured Depth**