

Well: ODP Leg 204 Site 1251A
Field: Hydrate Ridge
Ocean: Pacific
State: Oregon

Depth logged:	1216.8 m	To	1607.3 m	Mag decl:	66.41 deg.	Other services:
Date logged:	22-Jul-02	To	22-Jul-02	Mag dip:	17.70 deg.	DWOB, DTOR, MVC

Bore hole record

Casing record

Hole size	from	to	Size	Density	from	to
9.875 in.	1216.8 m	1608.6 m				

[illegible]

Surface equipment

Software record

Unit	Downhole Lab	IDEAL Wis	7.0_c2		
Depth system	PDE	SPM	7_0c_09		
		LWD	6.1, 8.0, 6.9		
		MWD	6.1		

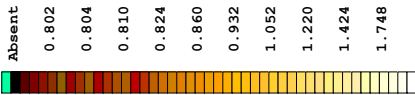
IDF

Graphics File Created: 13-Aug-2002 13:38

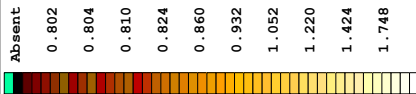
PIP SUMMARY

— Ring Samples

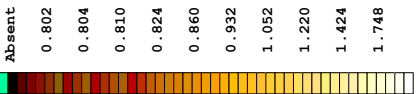
Gamma Ray Samples



Deep Button Image (R3IM) (OHMM)



**Medium Button Image (R2IM)
(OHMM)**

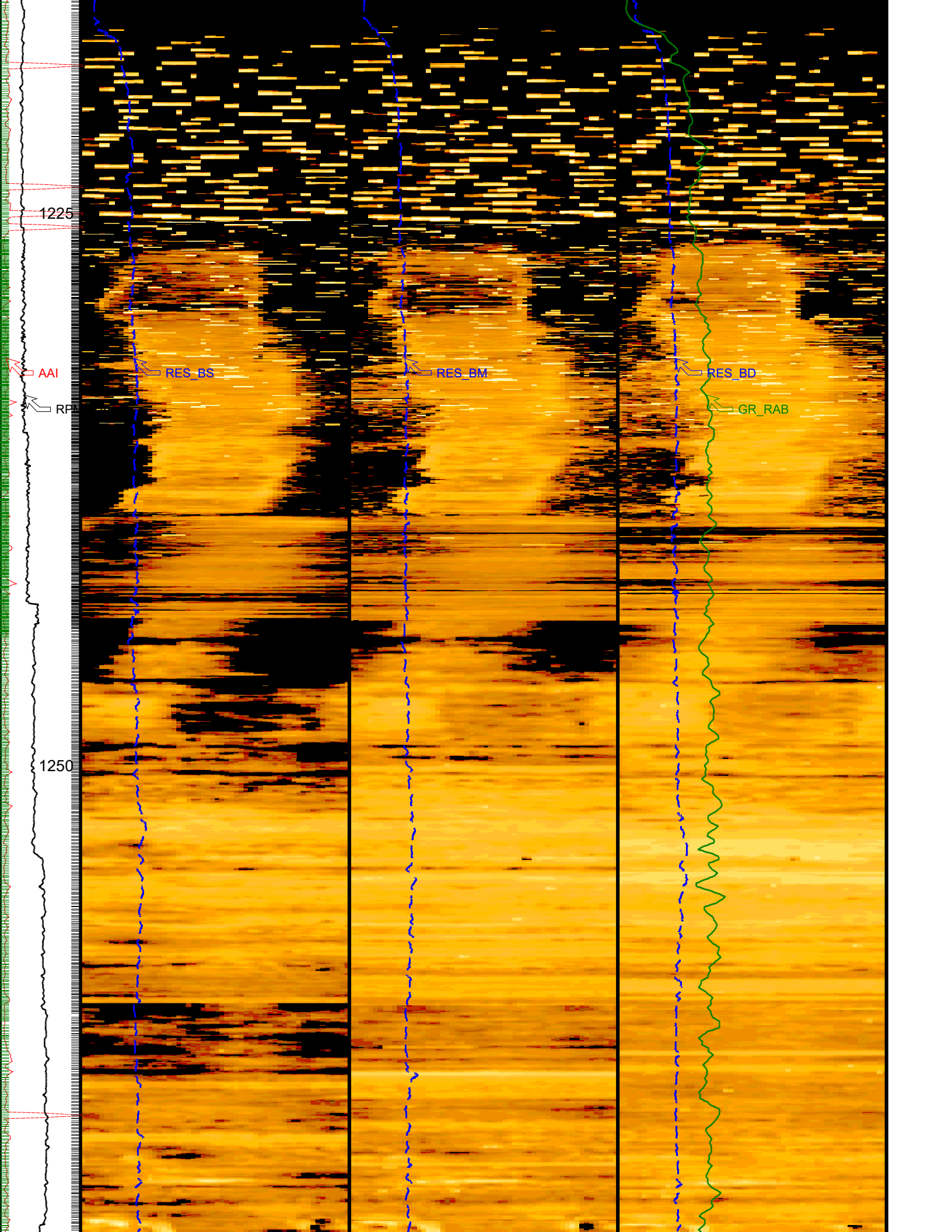


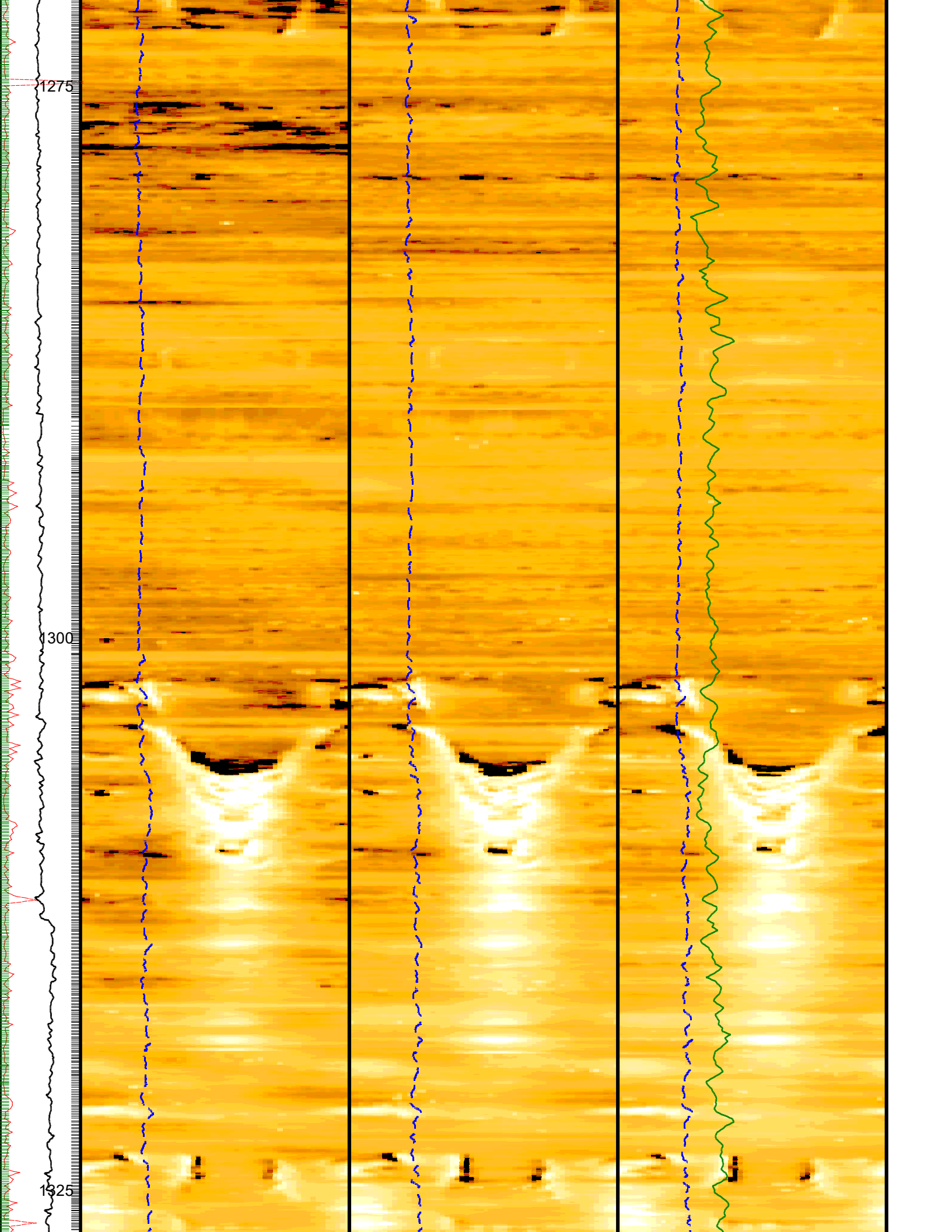
Shallow Button Image (R1IM) (OHMM)

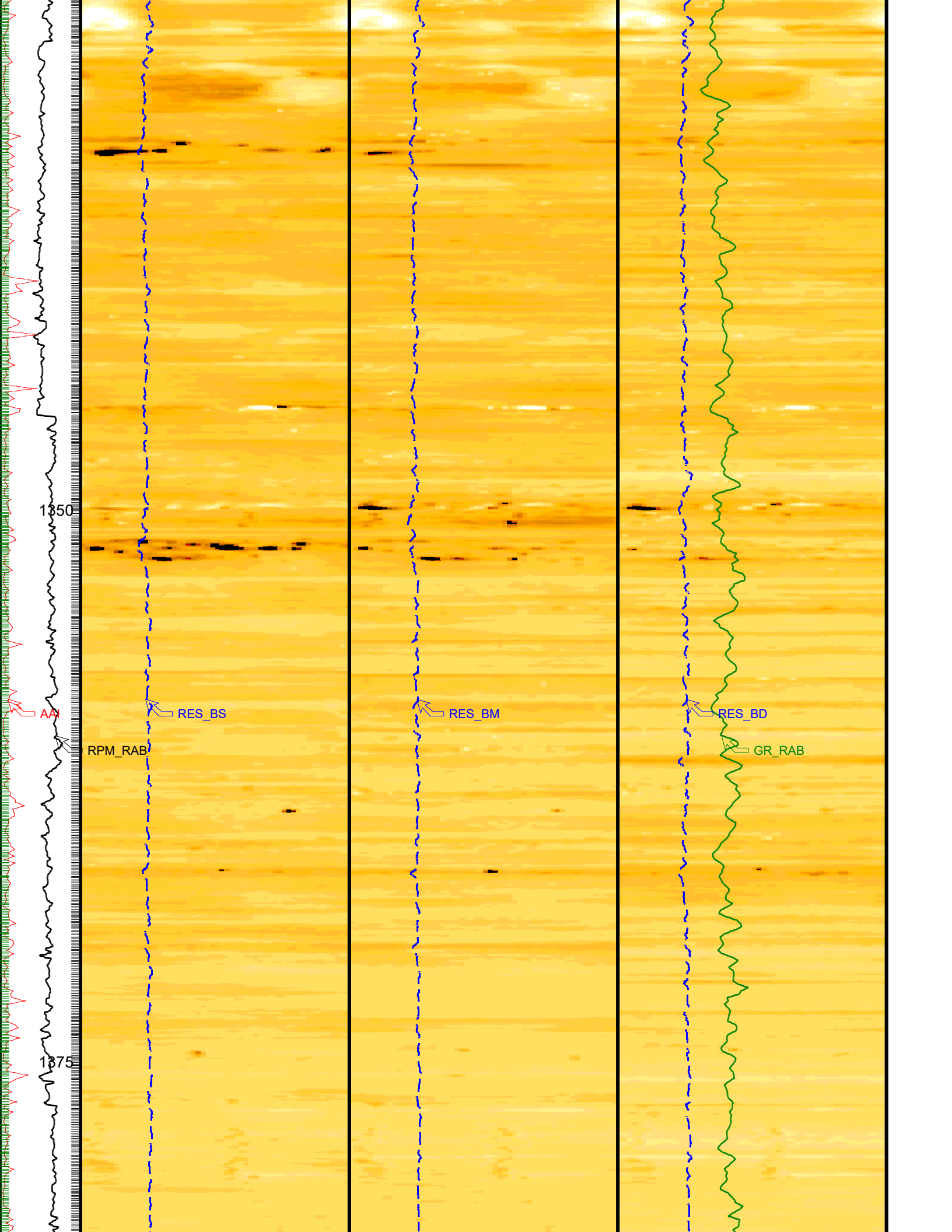


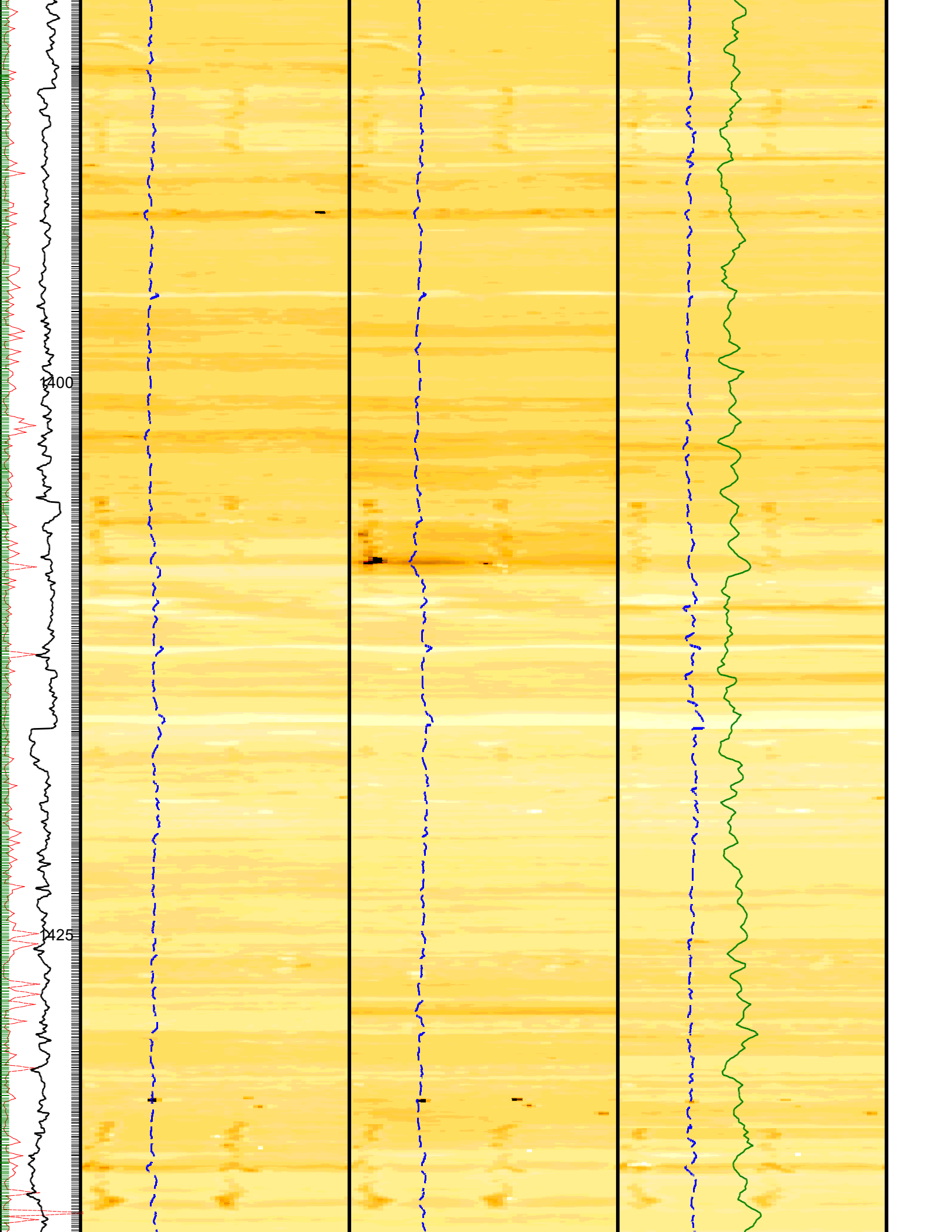
Angular Acceleration Indicator (AAI)

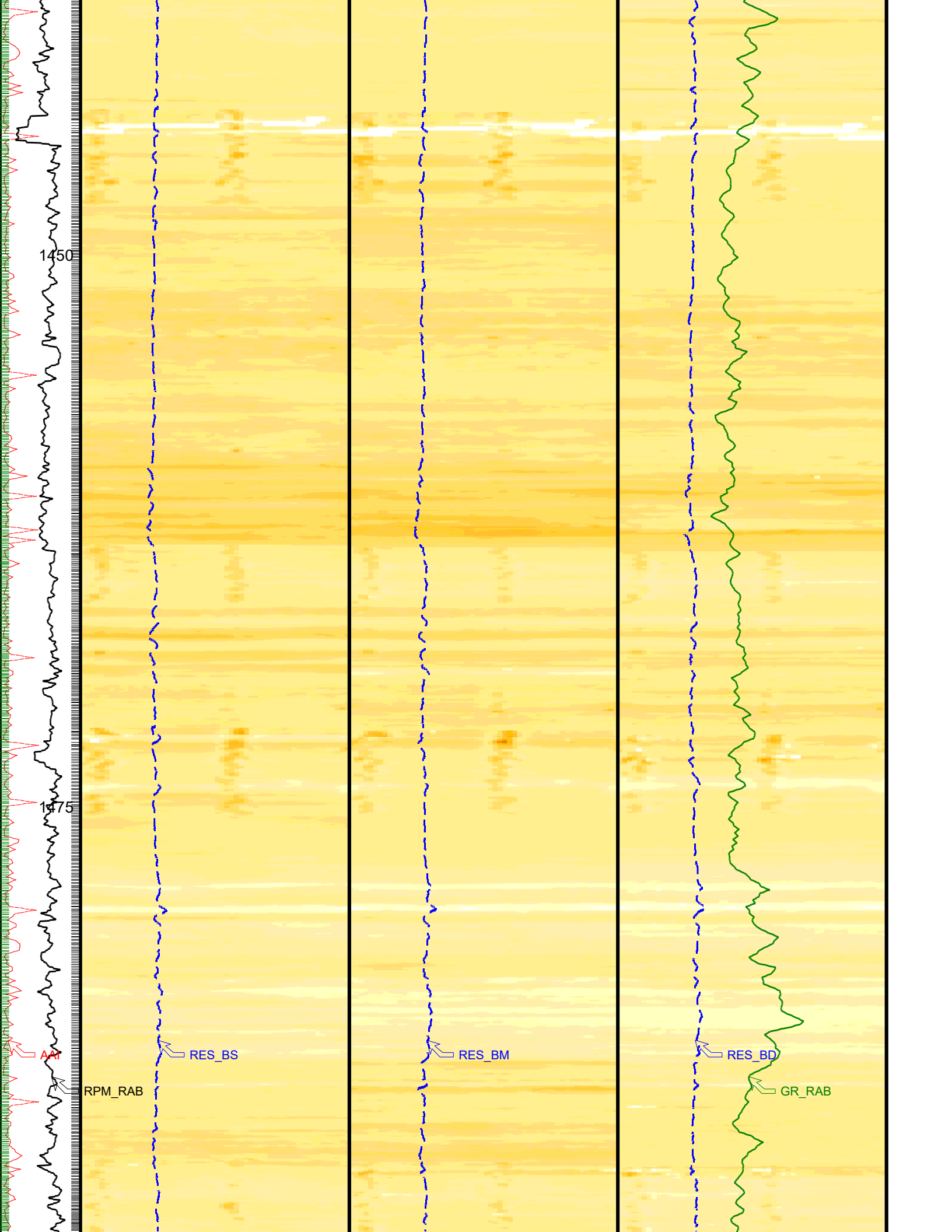


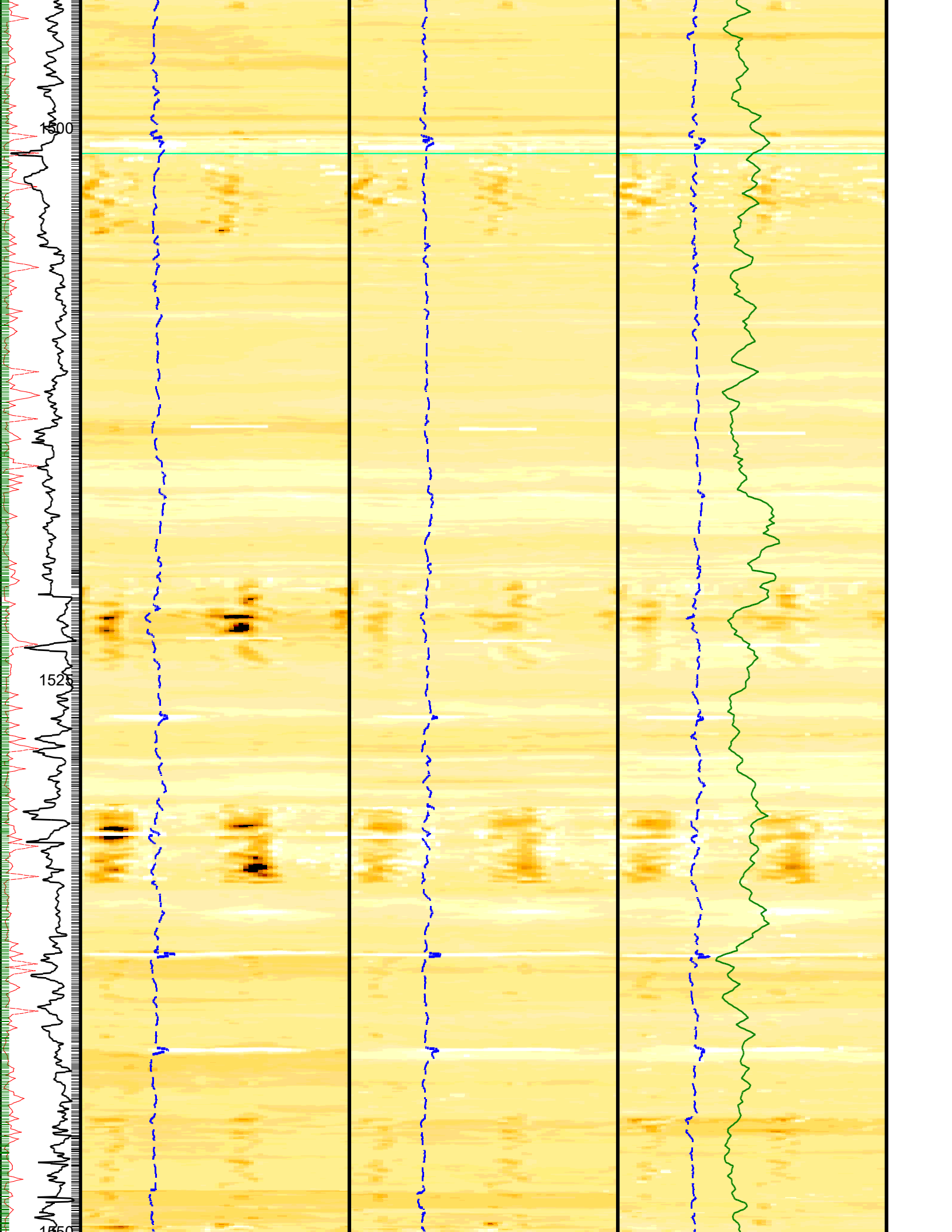


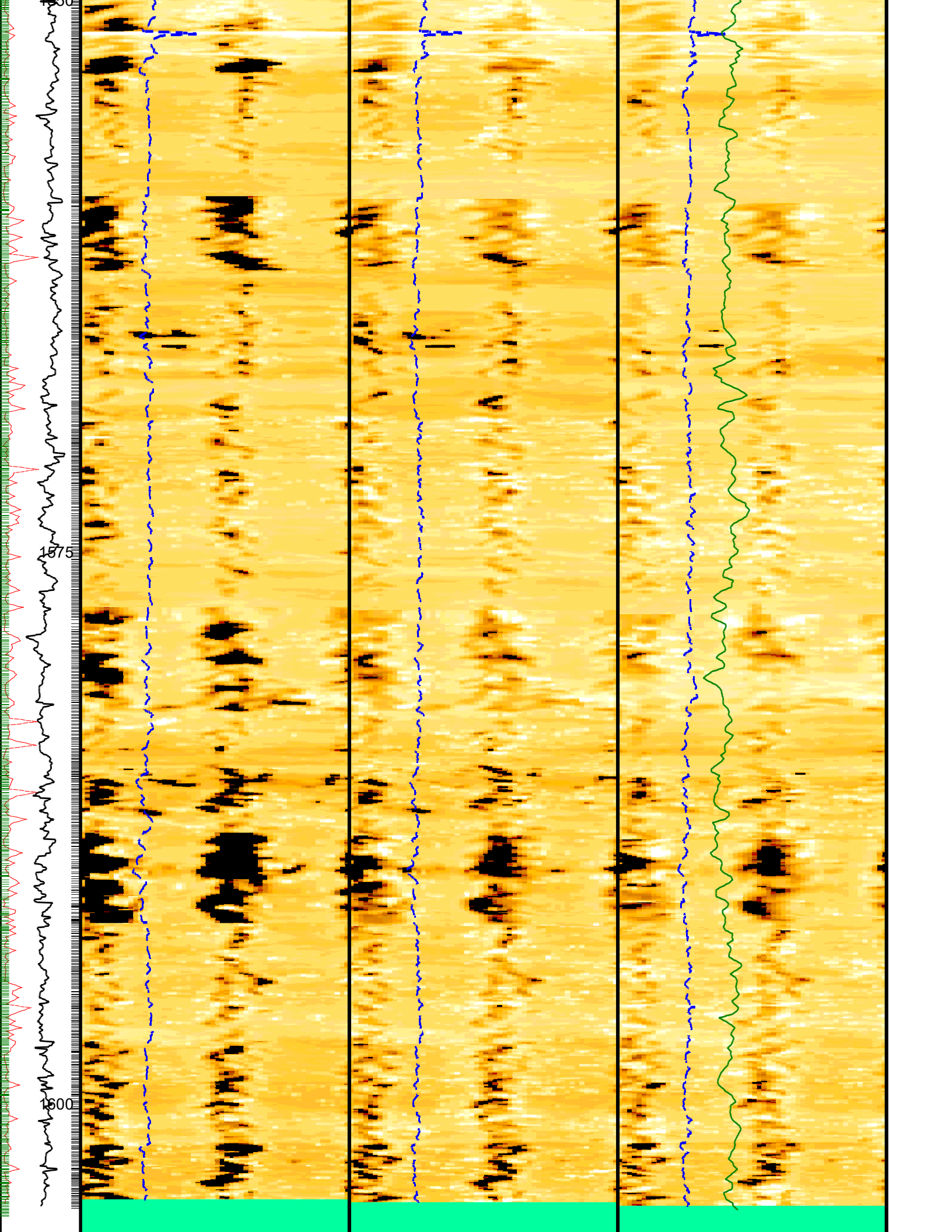


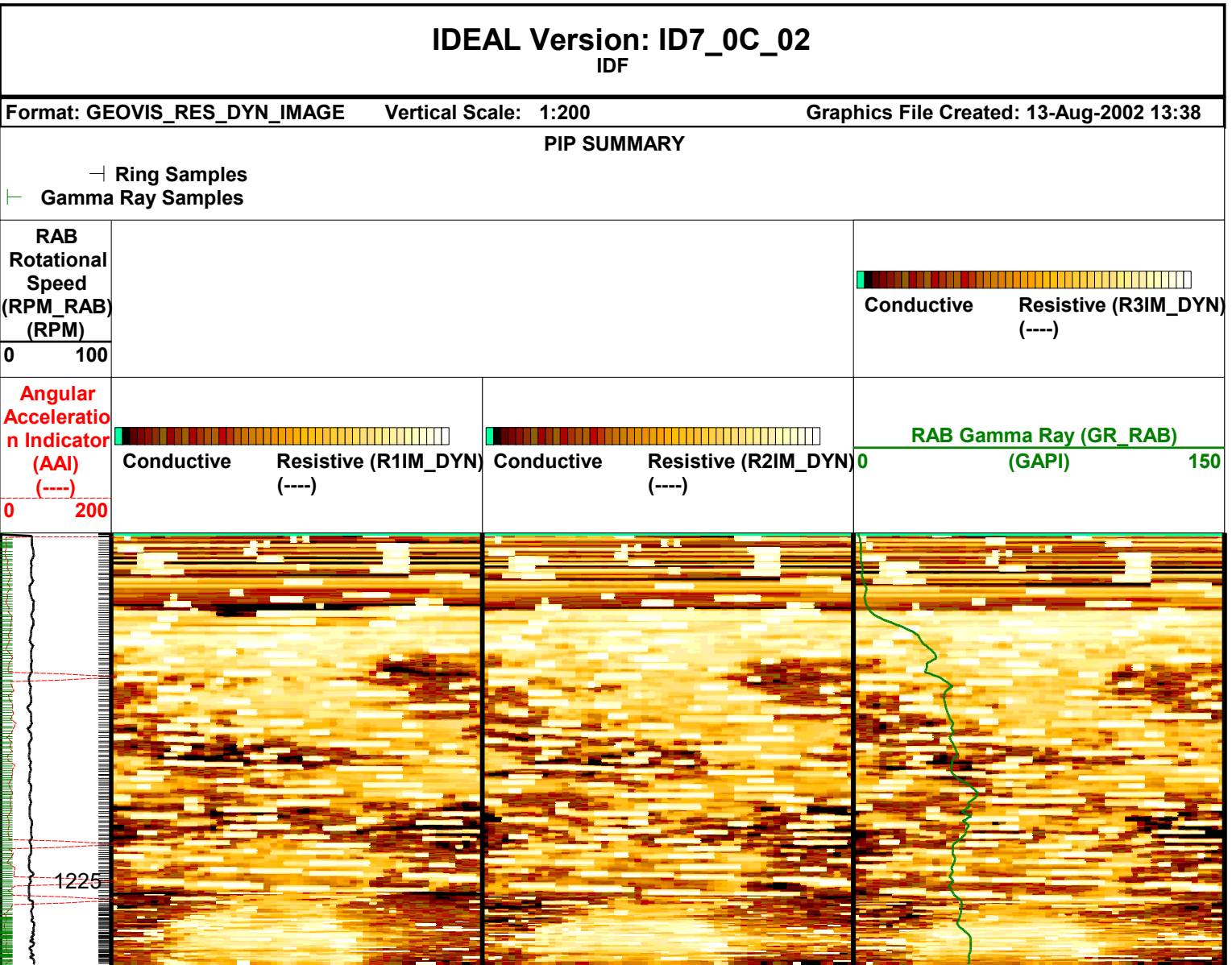
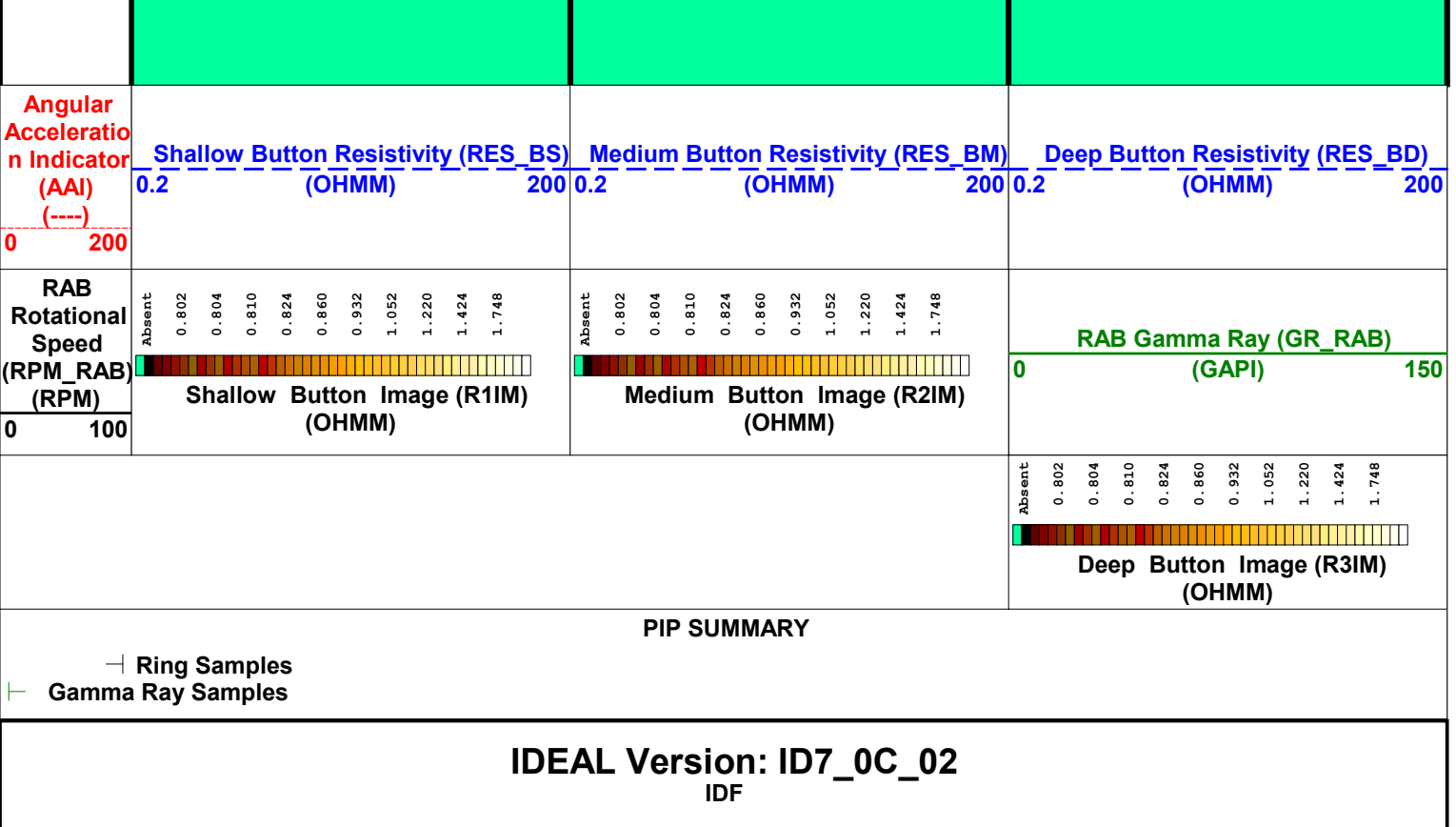


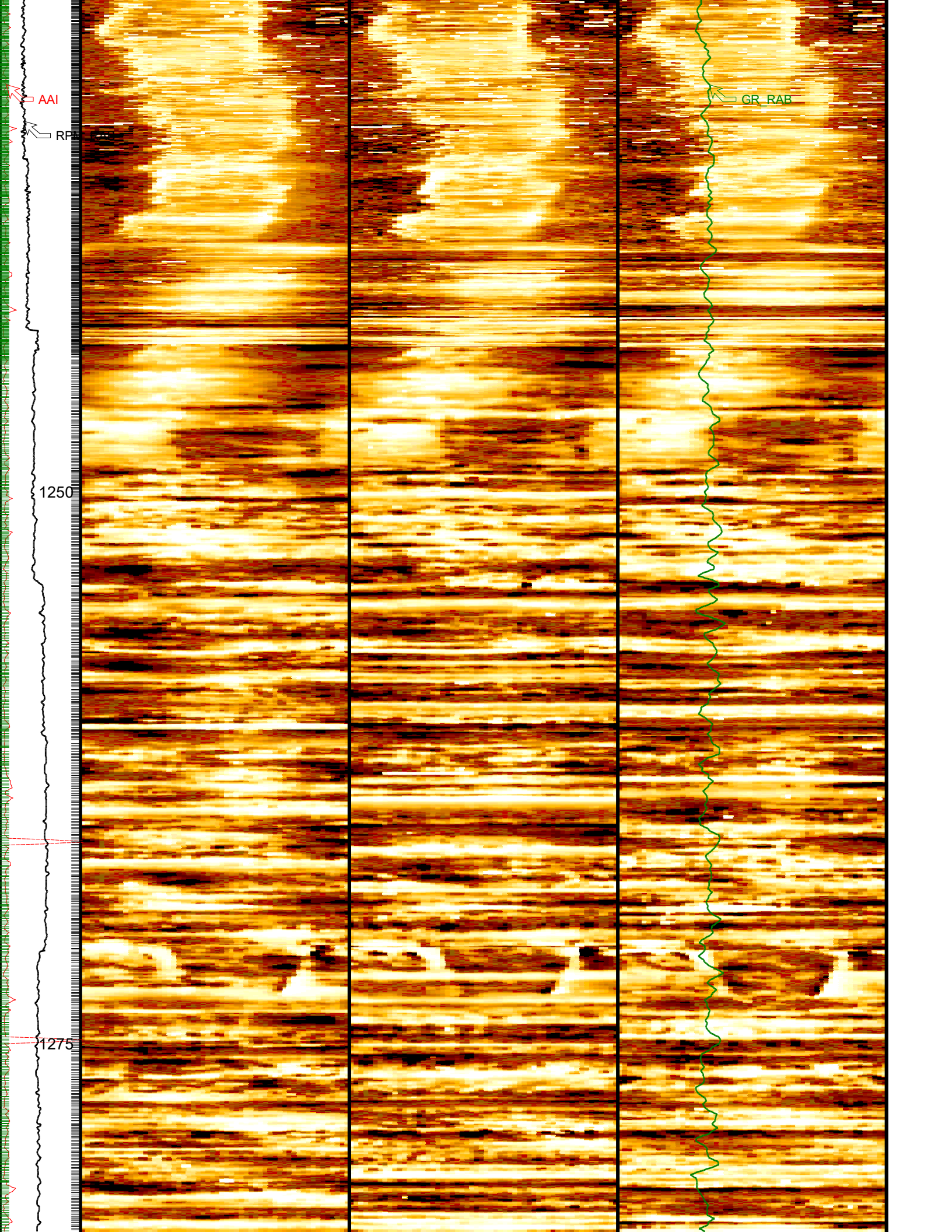


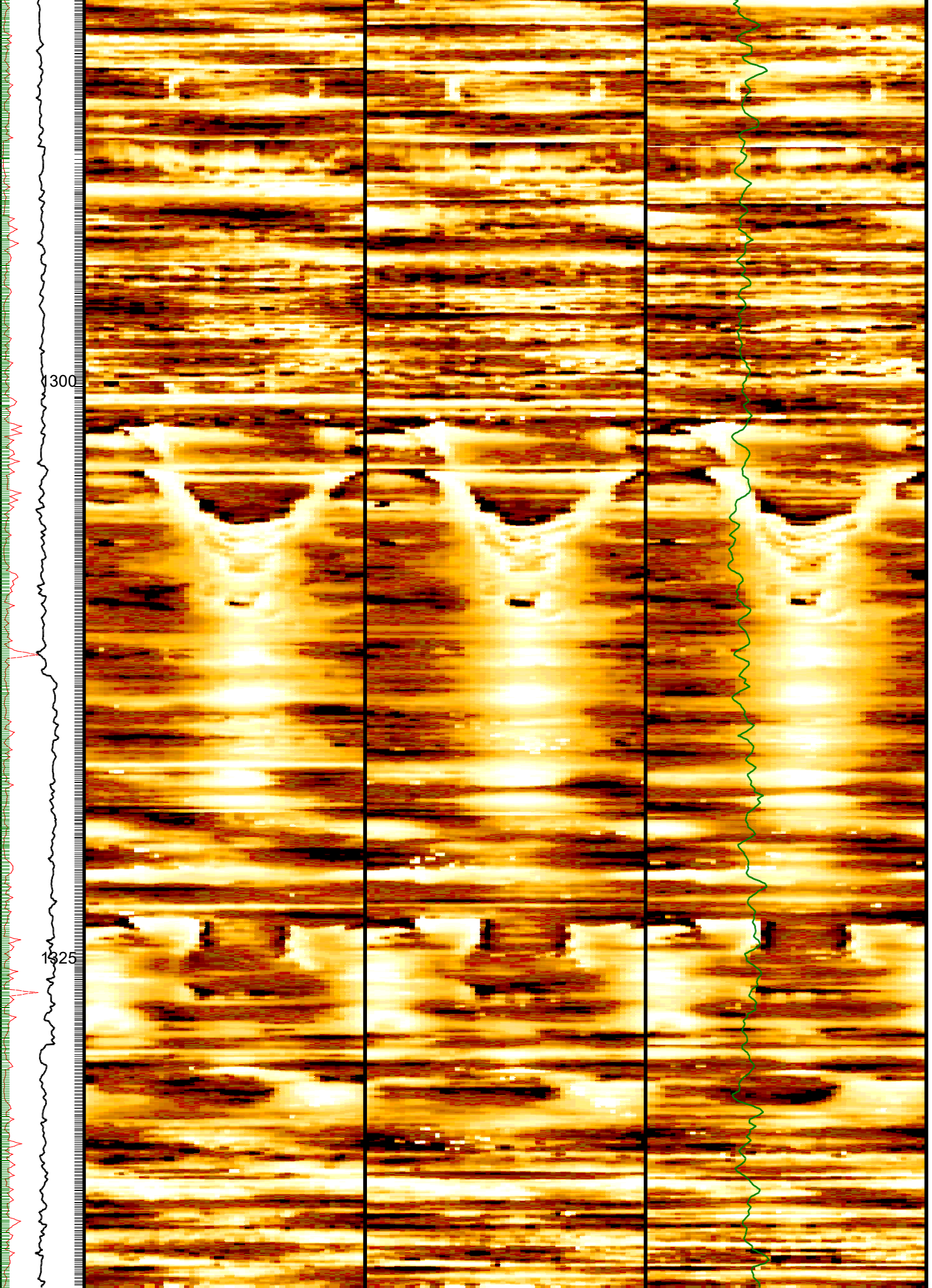


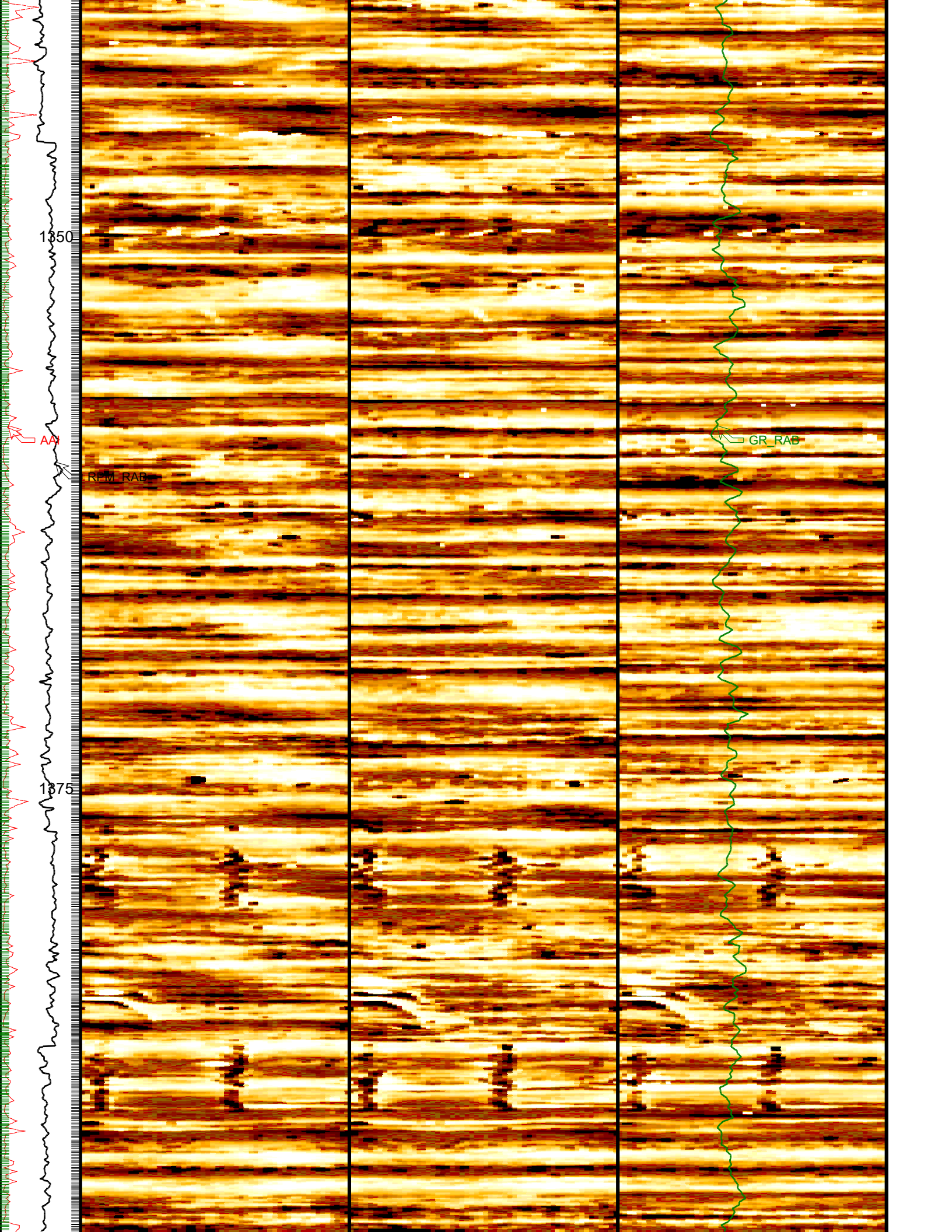


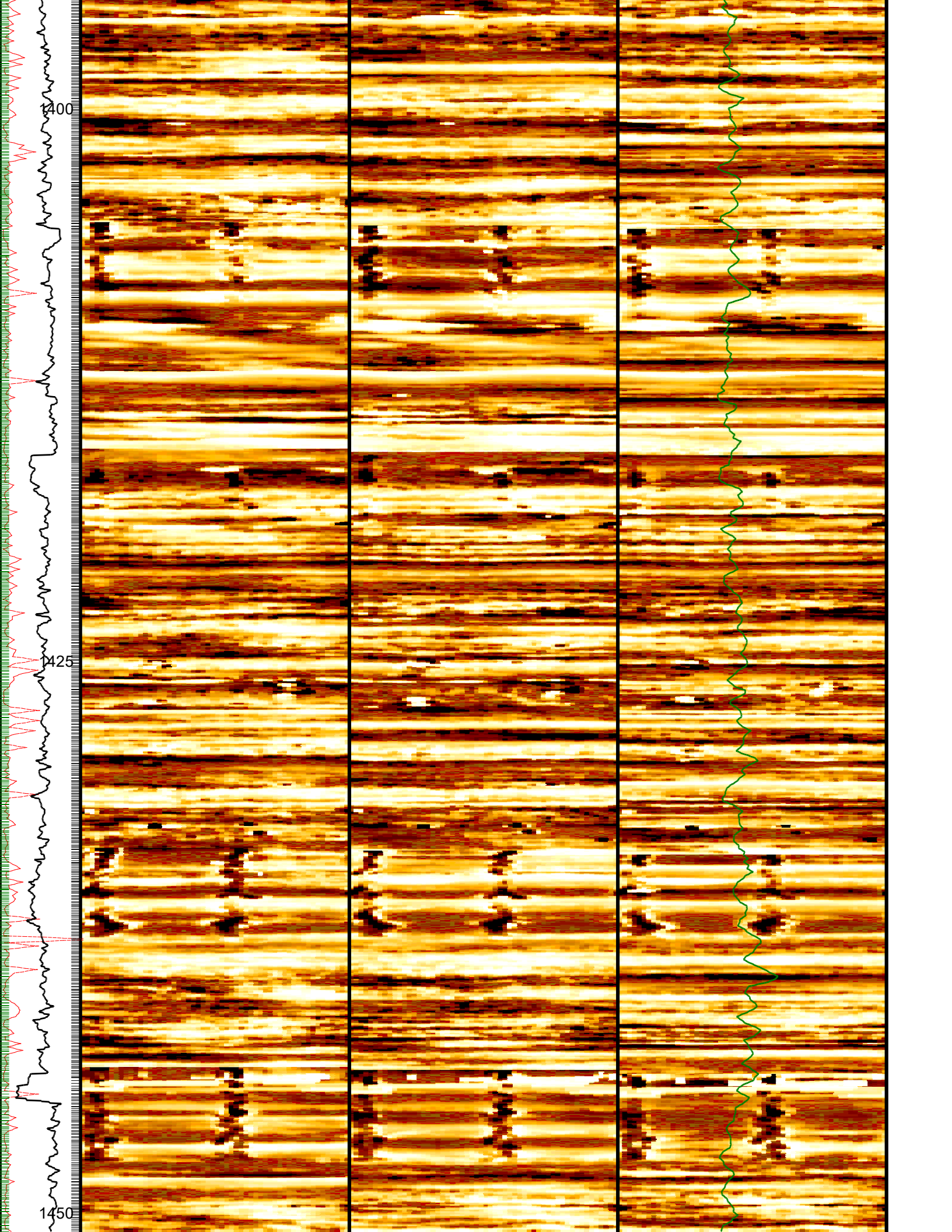


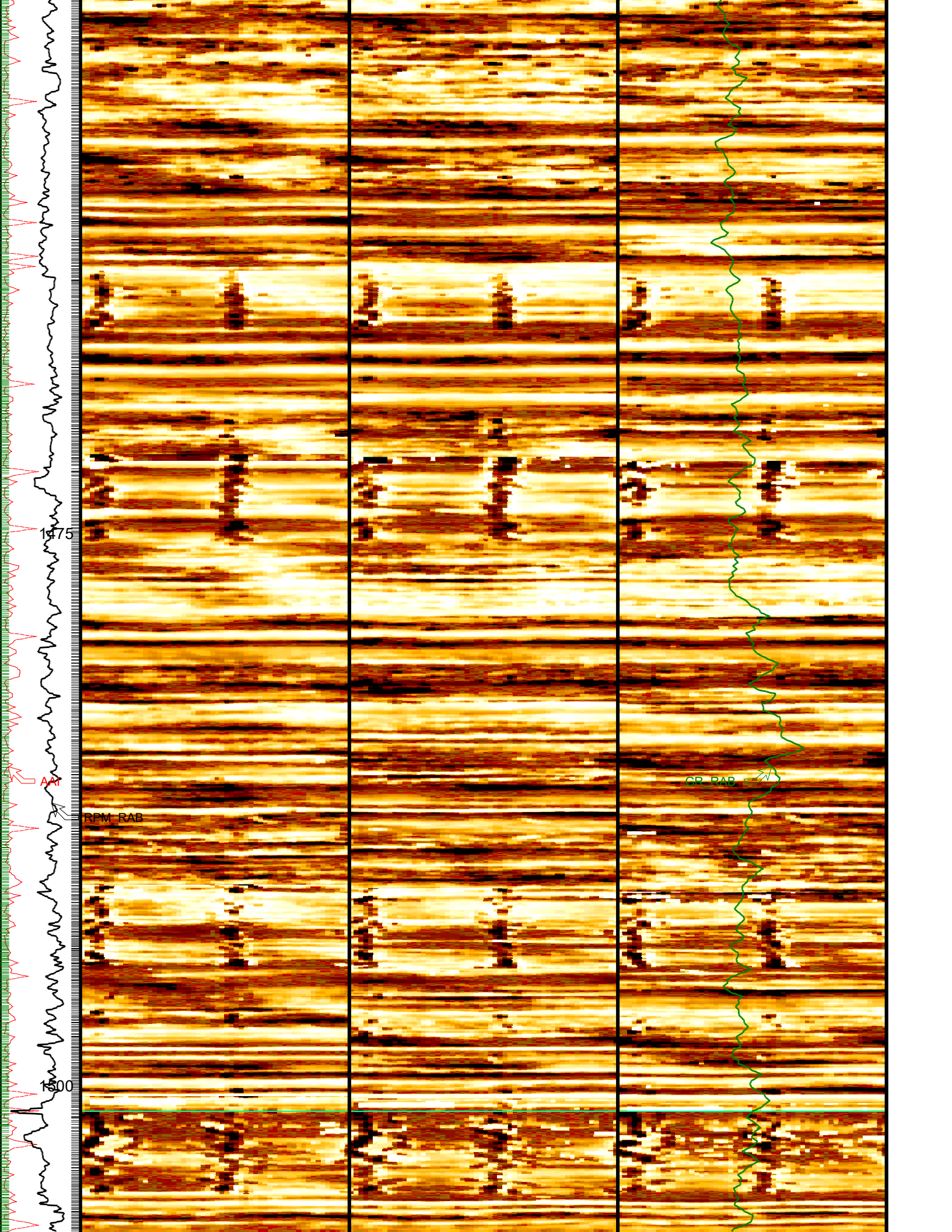


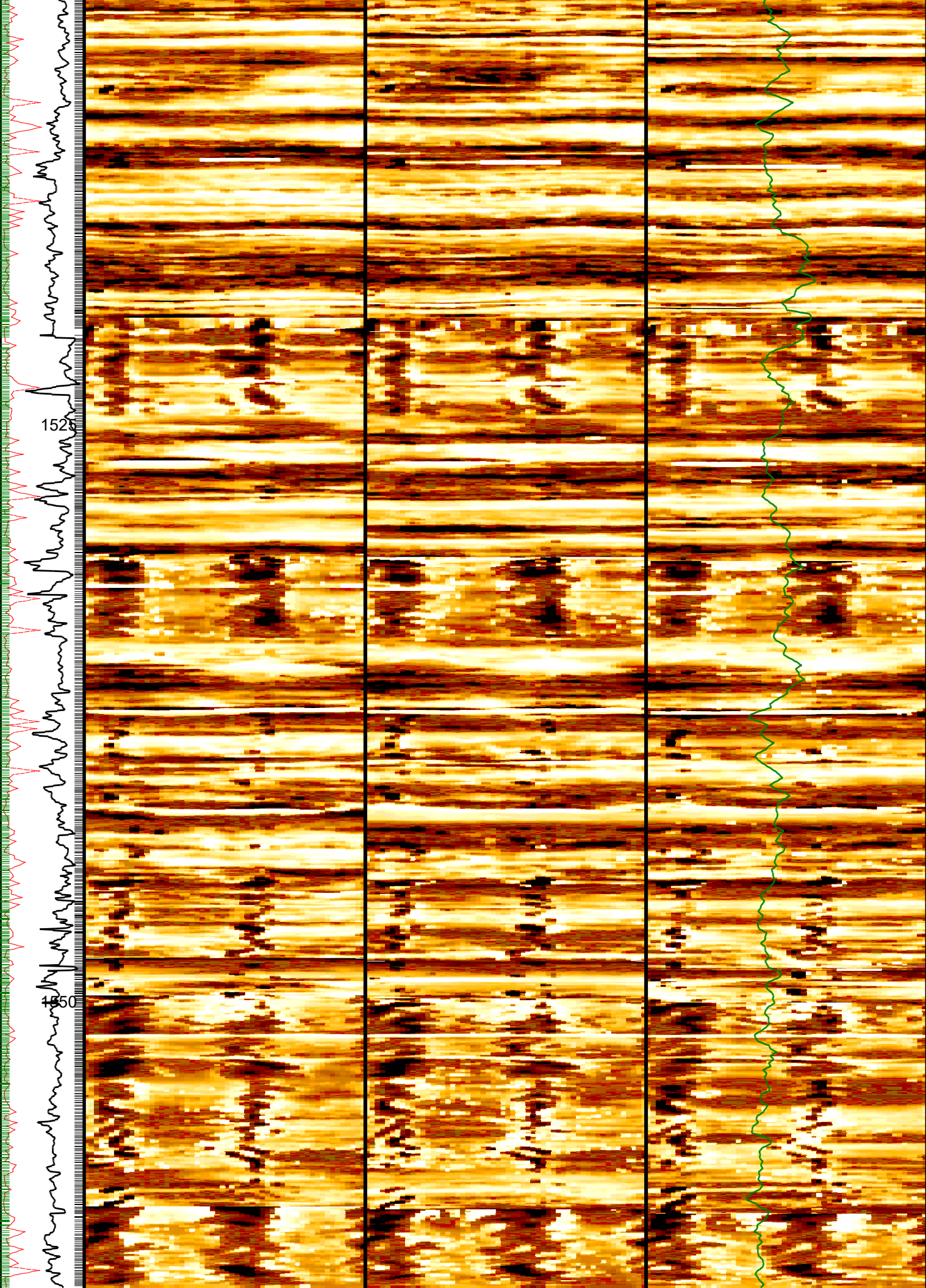






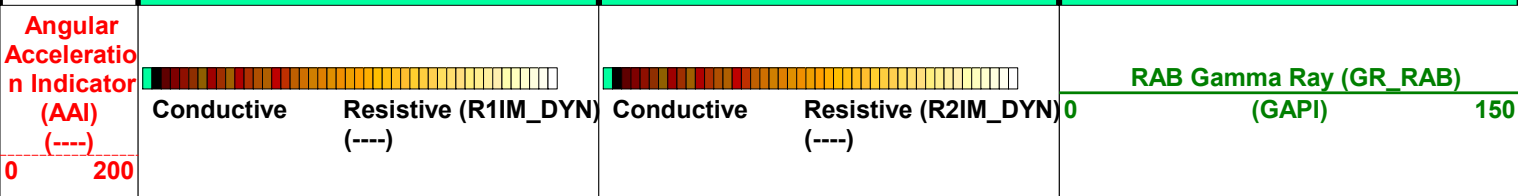
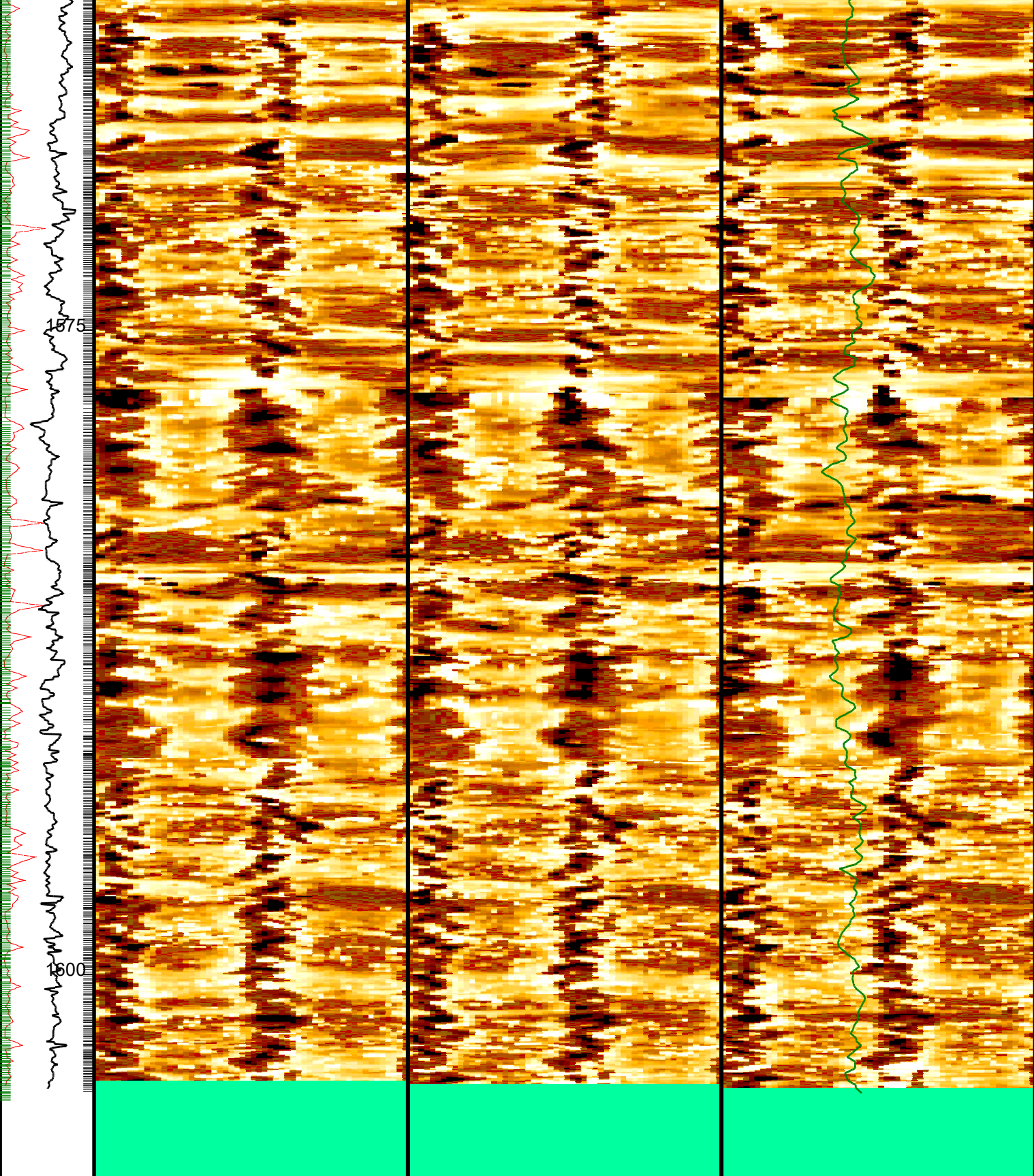






1528

50



PIP SUMMARY	
└ Ring Samples	
└ Gamma Ray Samples	
IDEAL Version: ID7_0C_02	
IDF	

Company:	Lamont Doherty	Schlumberger
Well:	ODP Leg 204 Site 1251A	
Field:	Hydrate Ridge	
Ocean:	Pacific	
State:	Oregon	
GeoVISION Resistivity Image 1 cm : 2 m Measured Depth		