

Company: Lamont Doherty Earth Observatory

Well: ODP Leg 205, Site 1253A

Field: Costa Rica

Country: Costa Rica Ocean: Pacific

**Accelerator Porosity Sonde
Hostile Litho Density
Gamma Ray**

Country: Costa Rica		Elev.: K.B. 11.3 m	
Field: Costa Rica		G.L. 0 m	
Location: Well: ODP Leg 205, Site 1253A		D.F. 11 m	
Company: Lamont Doherty Earth Observatory			
LOCATION			
Permanent Datum:	Mean Sea Level	Elev.: 0 m	
Log Measured From:	Rig Floor	11.3 m above Perm. Datum	
Drilling Measured From:	Rig Floor		
API Serial No.	Max. Hole Devi.	Longitude	Latitude
8-Oct-2002		86° 11.4' W	9° 38.9' N

Logging Date	8-Oct-2002
Run Number	One
Depth Driller	4987 m
Schlumberger Depth	4987 m
Bottom Log Interval	4917 m
Top Log Interval	4387 m
Casing Driller Size @ Depth	0.000 in @ 4800 m
Casing Schlumberger	4800 m
Bit Size	9.875 in
Type Fluid In Hole	Septicite Salt Water Base

MUD	
Density	Viscosity
Fluid Loss	PH
Source Of Sample	Mud Pit
RM @ Measured Temperature	0.322 ohm.m @ 27 degC
RMF @ Measured Temperature	@ @
RMC @ Measured Temperature	@ @
Source RMF	RMC
RM @ MRT	RMF @ MRT @ @
Maximum Recorded Temperatures	
Circulation Stopped	Time
Logger On Bottom	Time
Unit Number	Location
Recorded By	Javier Espinosa
Witnessed By	M. Kyaw, J. Morris, H. Villinger

Logging Date	8-Oct-2002	Run 1	Run 2	Run
Run Number	One			
Depth Driller	4987 m			
Schlumberger Depth	4987 m			
Bottom Log Interval	4917 m			
Top Log Interval	4387 m			
Casing Driller Size @ Depth	0.000 in @ 4800 m			
Casing Schlumberger	4800 m			
Bit Size	9.875 in			
Type Fluid In Hole	Septicite Salt Water Base			
MUD				
Density	Viscosity			
Fluid Loss	PH			
Source Of Sample	Mud Pit			
RM @ Measured Temperature	0.322 ohm.m @ 27 degC			
RMF @ Measured Temperature	@ @			
RMC @ Measured Temperature	@ @			
Source RMF	RMC			
RM @ MRT	RMF @ MRT @ @			
Maximum Recorded Temperatures				
Circulation Stopped	Time			
Logger On Bottom	Time			
Unit Number	Location			
Recorded By	Javier Espinosa			
Witnessed By	M. Kyaw, J. Morris, H. Villinger			

DISCLAIMER
 THE USE OF AND RELIANCE UPON THIS RECORDED-DATA BY THE HEREIN NAMED COMPANY (AND ANY OF ITS AFFILIATES, PARTNERS, REPRESENTATIVES, AGENTS, CONSULTANTS AND EMPLOYEES) IS SUBJECT TO THE TERMS AND CONDITIONS AGREED UPON BETWEEN SCHLUMBERGER AND THE COMPANY, INCLUDING: (a) RESTRICTIONS ON USE OF THE RECORDED-DATA; (b) DISCLAIMERS AND WAIVERS OF WARRANTIES AND REPRESENTATIONS REGARDING COMPANY'S USE OF AND RELIANCE UPON THE RECORDED-DATA; AND (c) CUSTOMER'S FULL AND SOLE RESPONSIBILITY FOR ANY INFERENCE DRAWN OR DECISION MADE IN CONNECTION WITH THE USE OF THIS RECORDED-DATA.

OTHER SERVICES1
 OS1:
 OS2: MEST
 OS3: DSST
 OS4: DIT
 OS5: HNGS

OTHER SERVICES2
 OS1:
 OS2:
 OS3:
 OS4:
 OS5:

REMARKS: RUN NUMBER 1
 Logs not depth corrected.
 Corrections applied as per parameter listing below main pass.
 Caliper wide open in some sections and data may be invalid

REMARKS: RUN NUMBER 2

RUN 1		
SERVICE ORDER #:		
PROGRAM VERSION:	10C0-306	
FLUID LEVEL:		
LOGGED INTERVAL	START	STOP

RUN 2		
SERVICE ORDER #:		
PROGRAM VERSION:		
FLUID LEVEL:		
LOGGED INTERVAL	START	STOP

EQUIPMENT DESCRIPTION


RUN 1

SURFACE EQUIPMENT

SFT-281 24
 SFT-178 4722
 GSR-U 135
 WITM (DTS)-A

RUN 2

DOWNHOLE EQUIPMENT

LEH-QT		33.47
LEH-QT		
DTC-H	CTEM	32.30
ECH-KC	TelStatus	32.58
	ToolStatu	31.66
HNGS-BA	Upper_1	30.96
HNGS-BA 77	Lower_2	30.75

DOWNHOLE EQUIPMENT

HNSH-BA 79

ILE-D 29.16
ILE-D

APS-BA 26.73
APS-BA 22
APH-AC 22
MNTR-F 4185
Status Minitron
Near TD
Near
Far Arr
Far
Far TD
24.28
24.20
24.08
23.98

NPLC-B 22.78
NPLC-B 79
NPH-B 82
Status 21.56

DTA-A 20.34
ECH-KE

HLDT-A 19.12
GSR-Z 1846
HLDC-AA 11
HLDV-A 10
HLDS-B 10
HLDP-B 10
HEH-G 11
HEH-H 12
LS
SS
Caliper
13.17
13.05
13.00

DIT-E 12.23
DIC-EB 438
MIH-ZA
DIS-HB 442

SP 5.86
Deep Ind 5.61
Aux Meas SFL 4.69
Med Ind 4.54
Status 2.71

AH-TAP 2.71
AH-TAP
DF
Tension HV 0.00
TOOL ZERO

MAXIMUM STRING DIAMETER 3.88 IN
MEASUREMENTS RELATIVE TO TOOL ZERO
ALL LENGTHS IN METERS

Input DLIS Files

DEFAULT PI_LDL_APS_NGS_031PUP FN:36 PRODUCER 08-Oct-2002 12:53 16140.0 FT 14108.0 FT

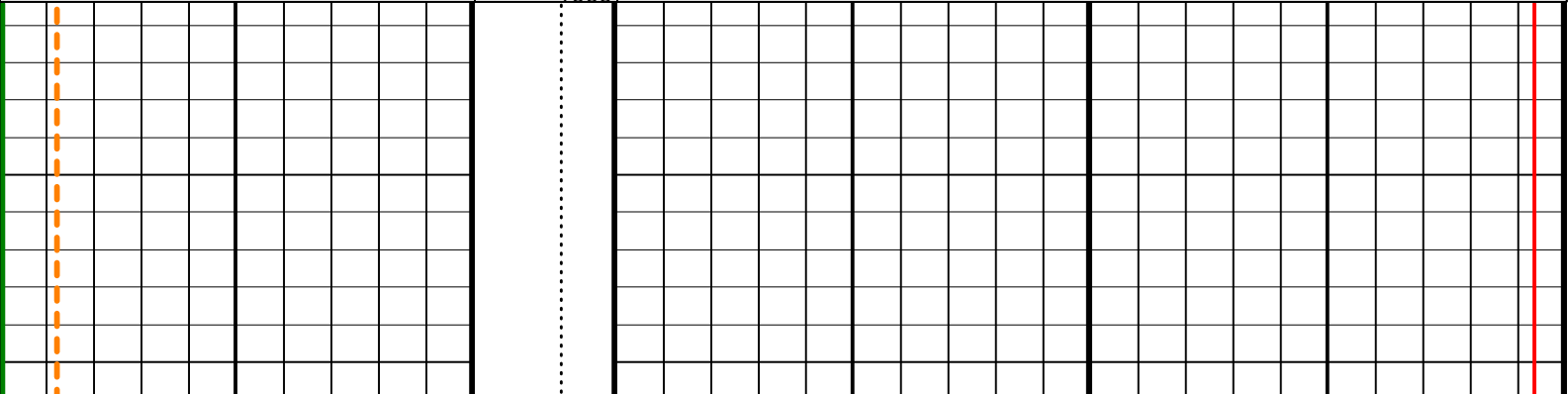
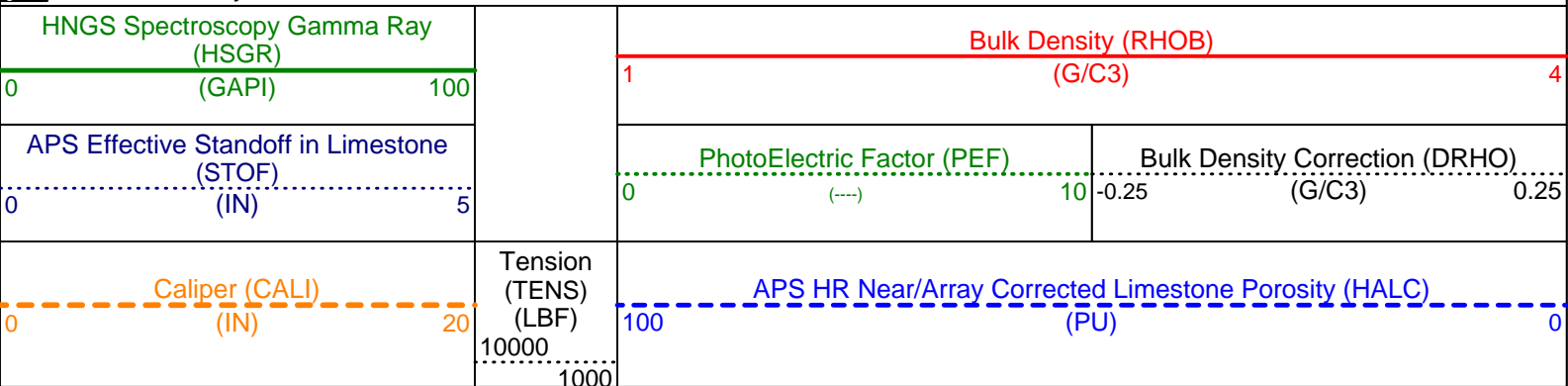
MAIN PASS

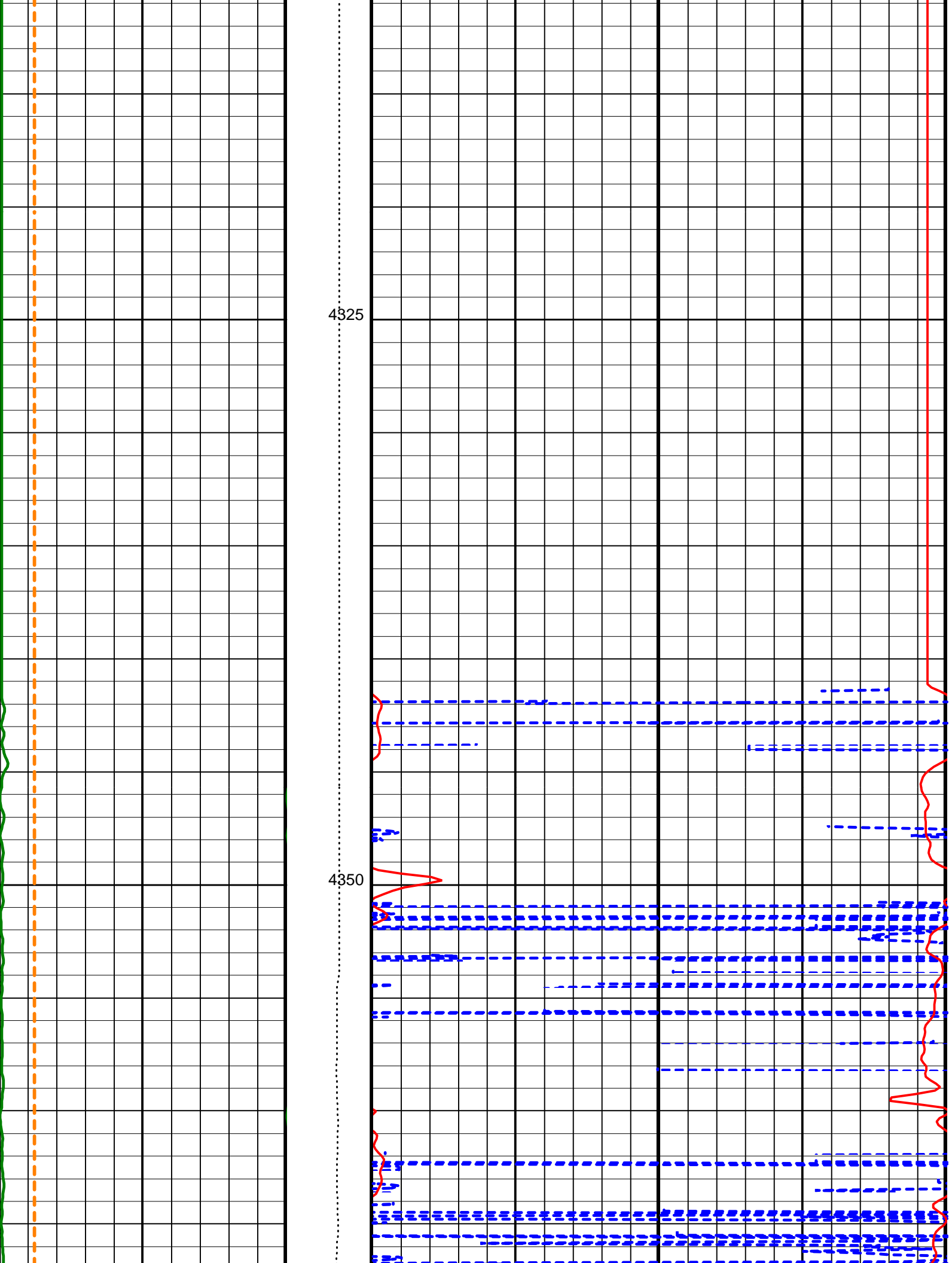
OP System Version: 10C0-306
MCM

DITE	10C0-306	HLDTA	10C0-306
DTAA	10C0-306	NPLC-BA	OP10-KP1
APS-BA	OP10-KP1	HNGS-BA	OP10-KP1
DTCH	10C0-306		

PIP SUMMARY

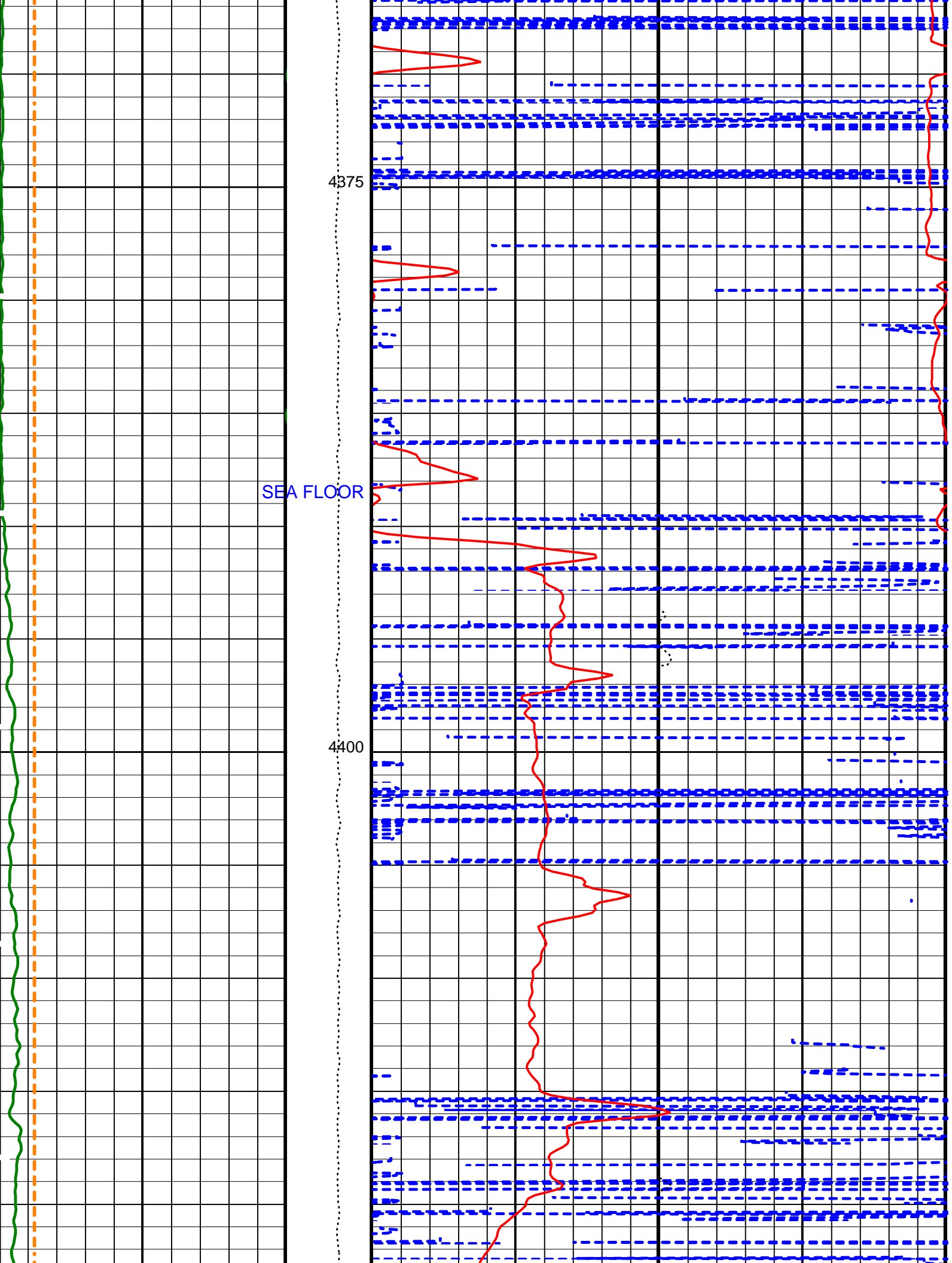
Time Mark Every 60 S





4325

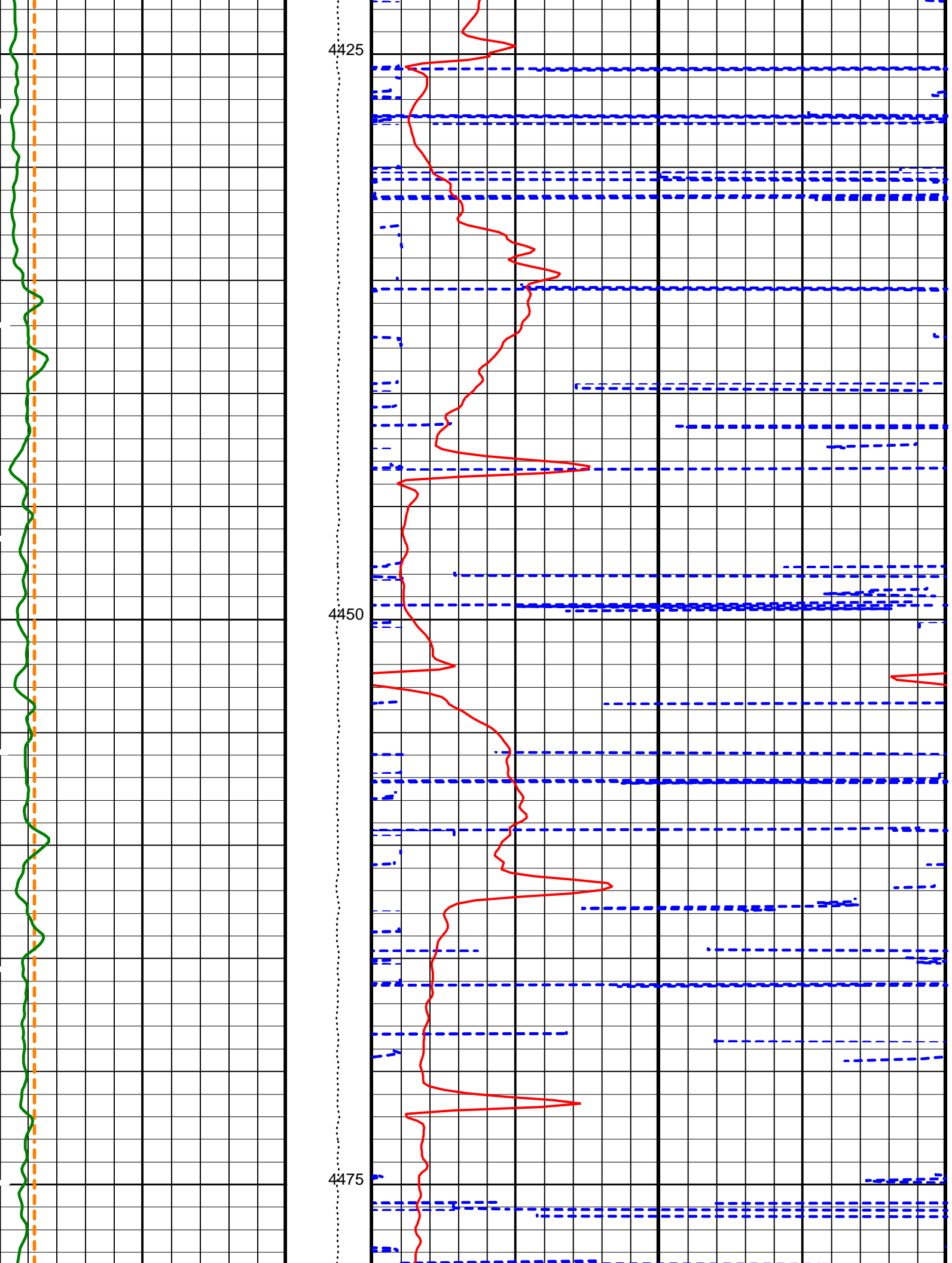
4350

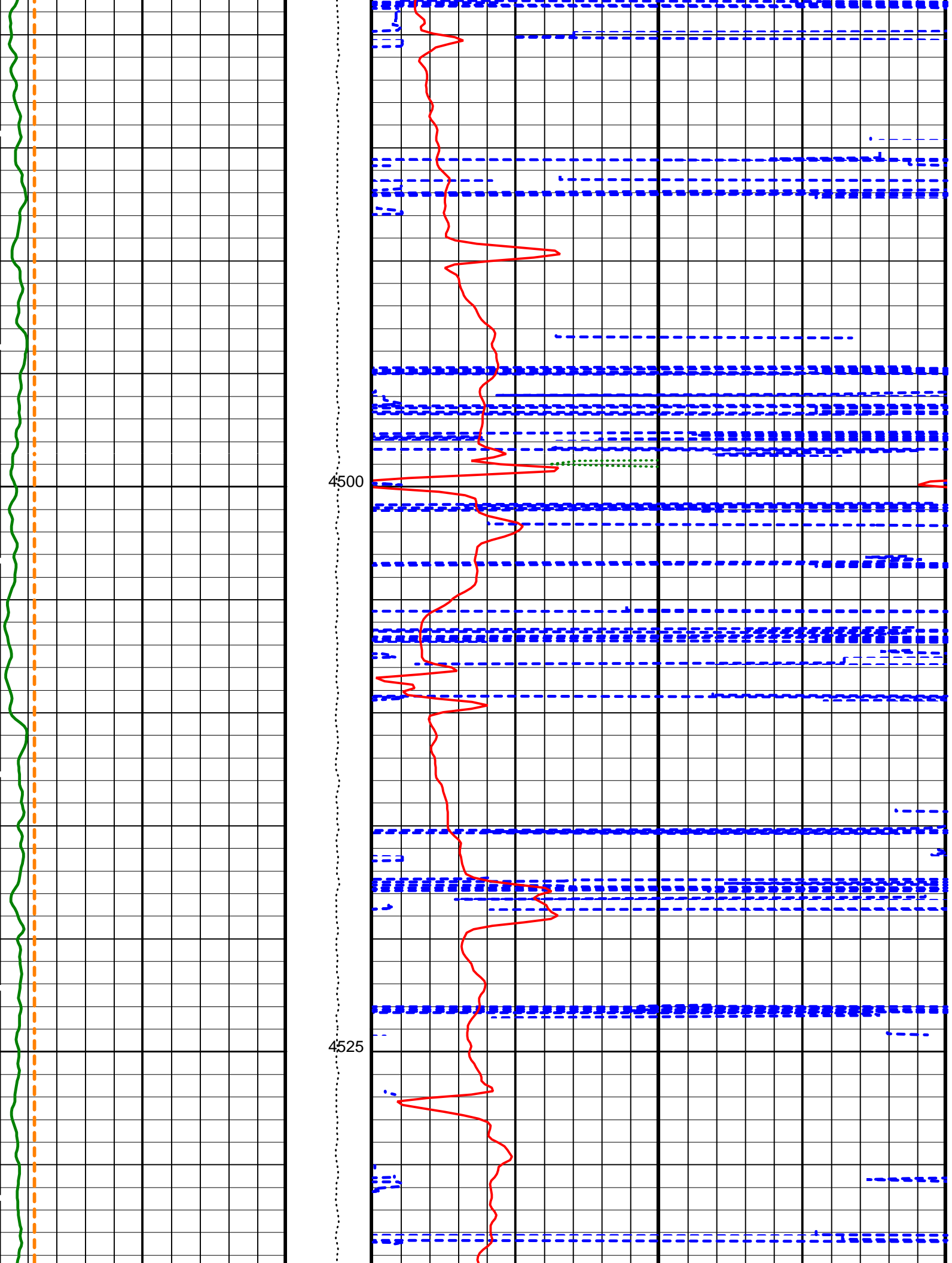


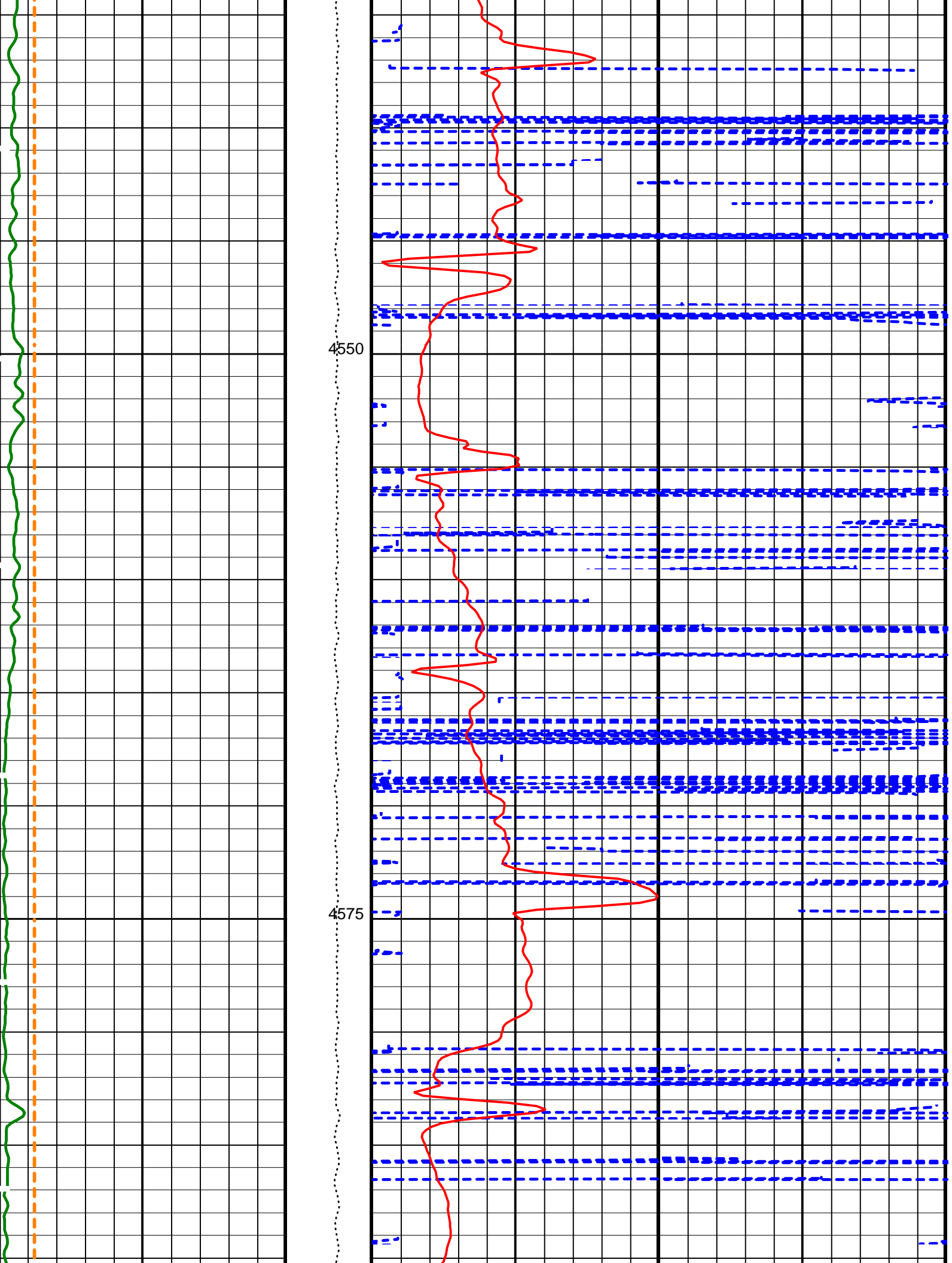
4375

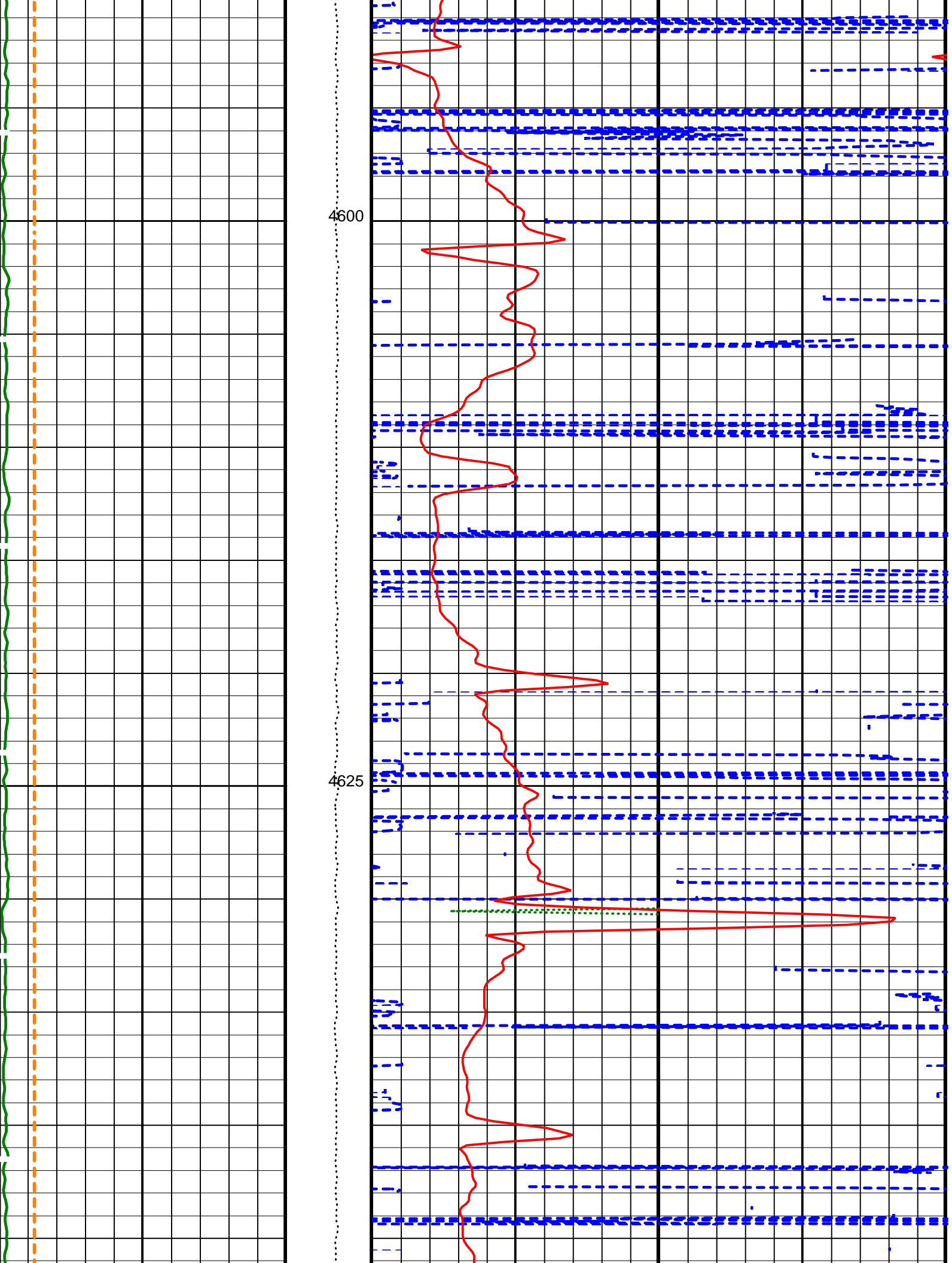
SEA FLOOR

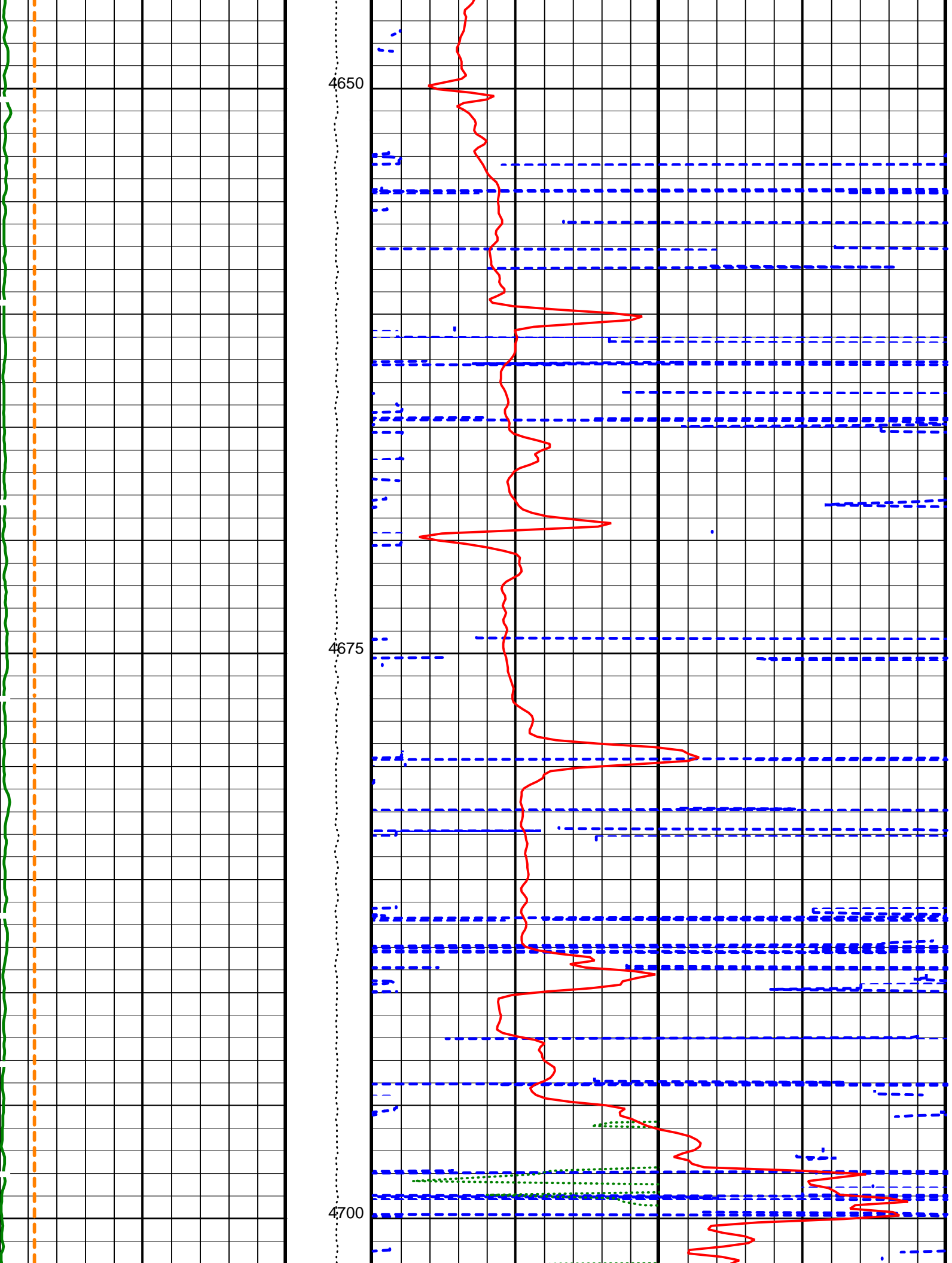
4400

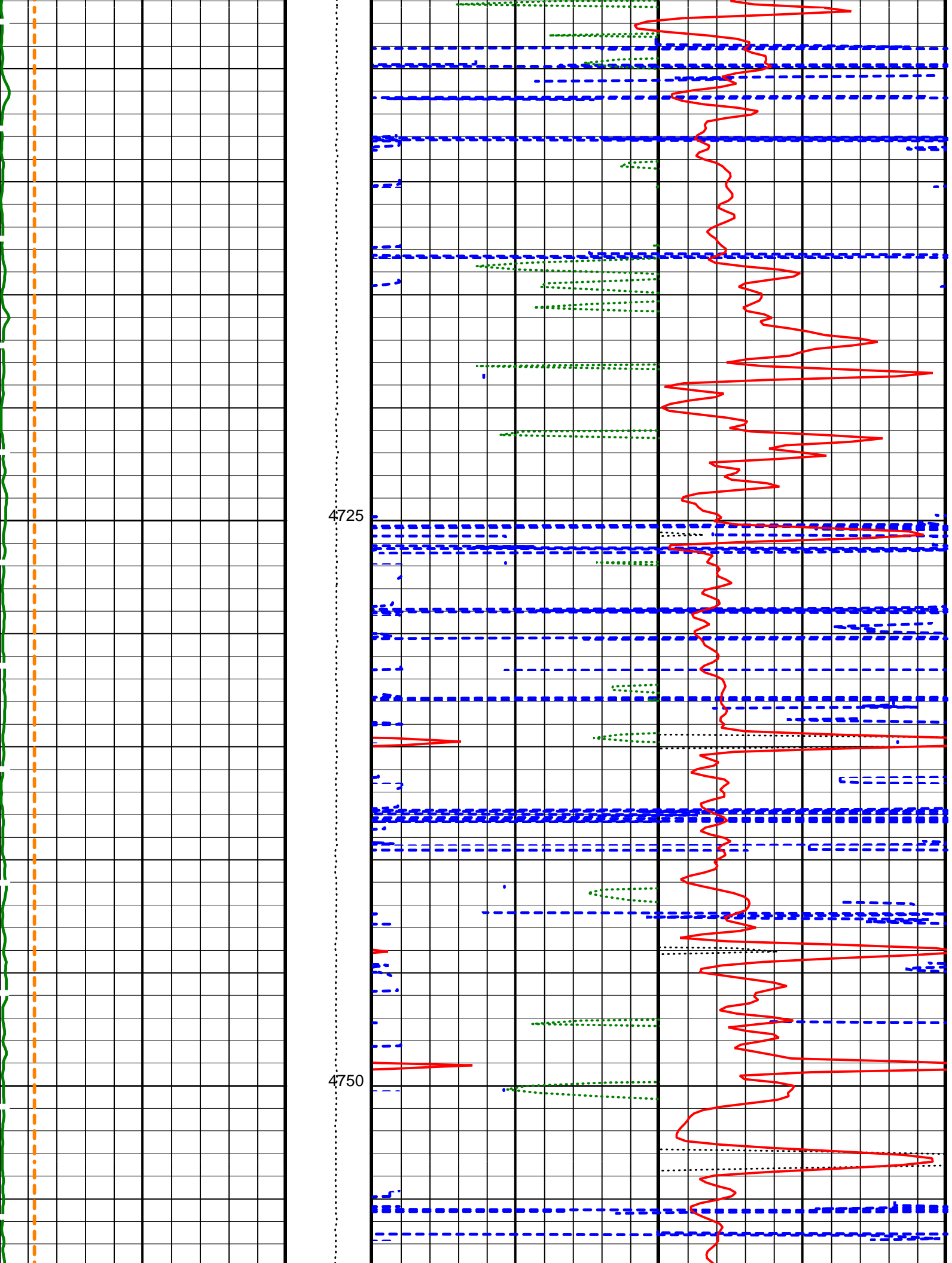


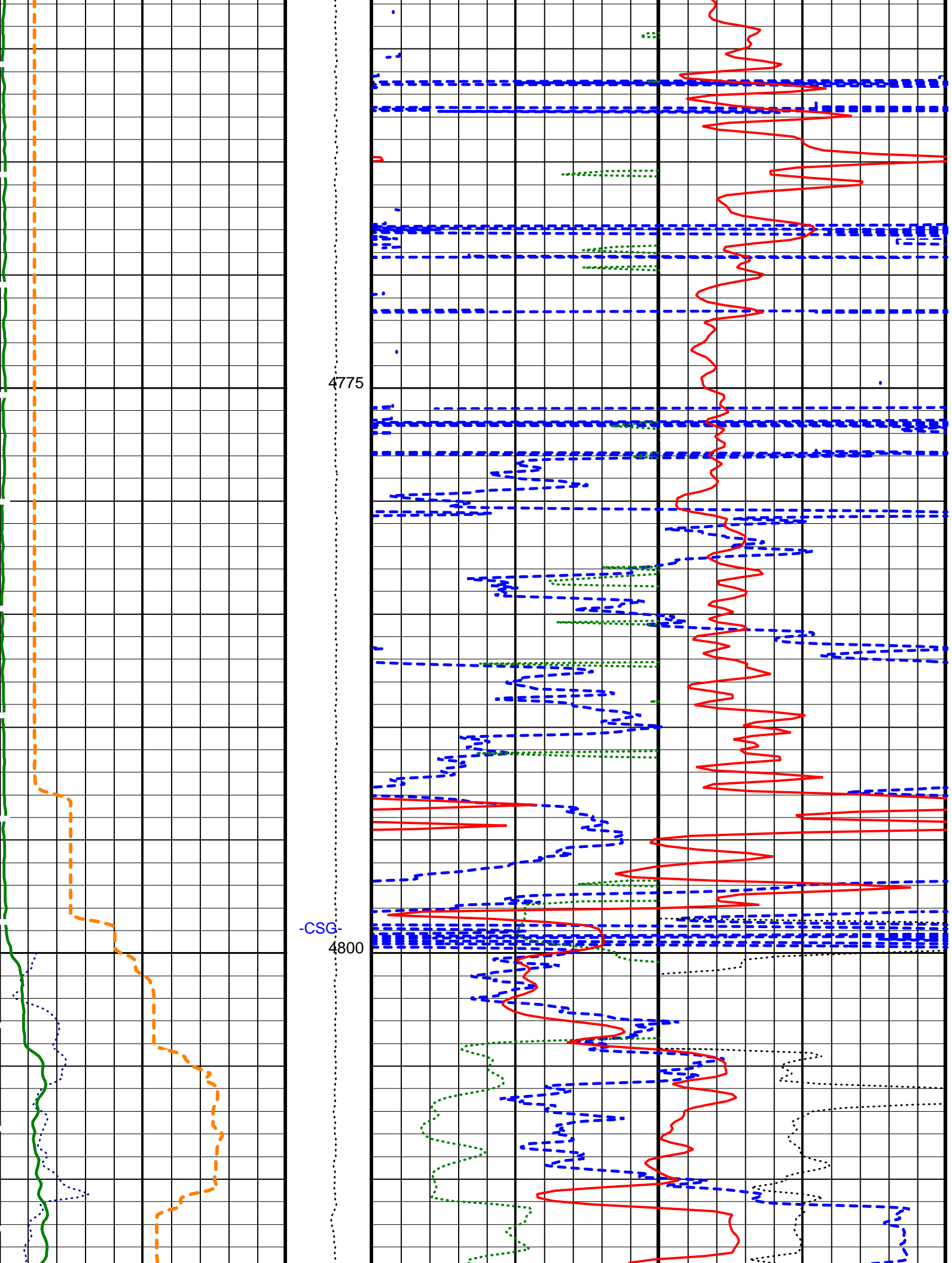


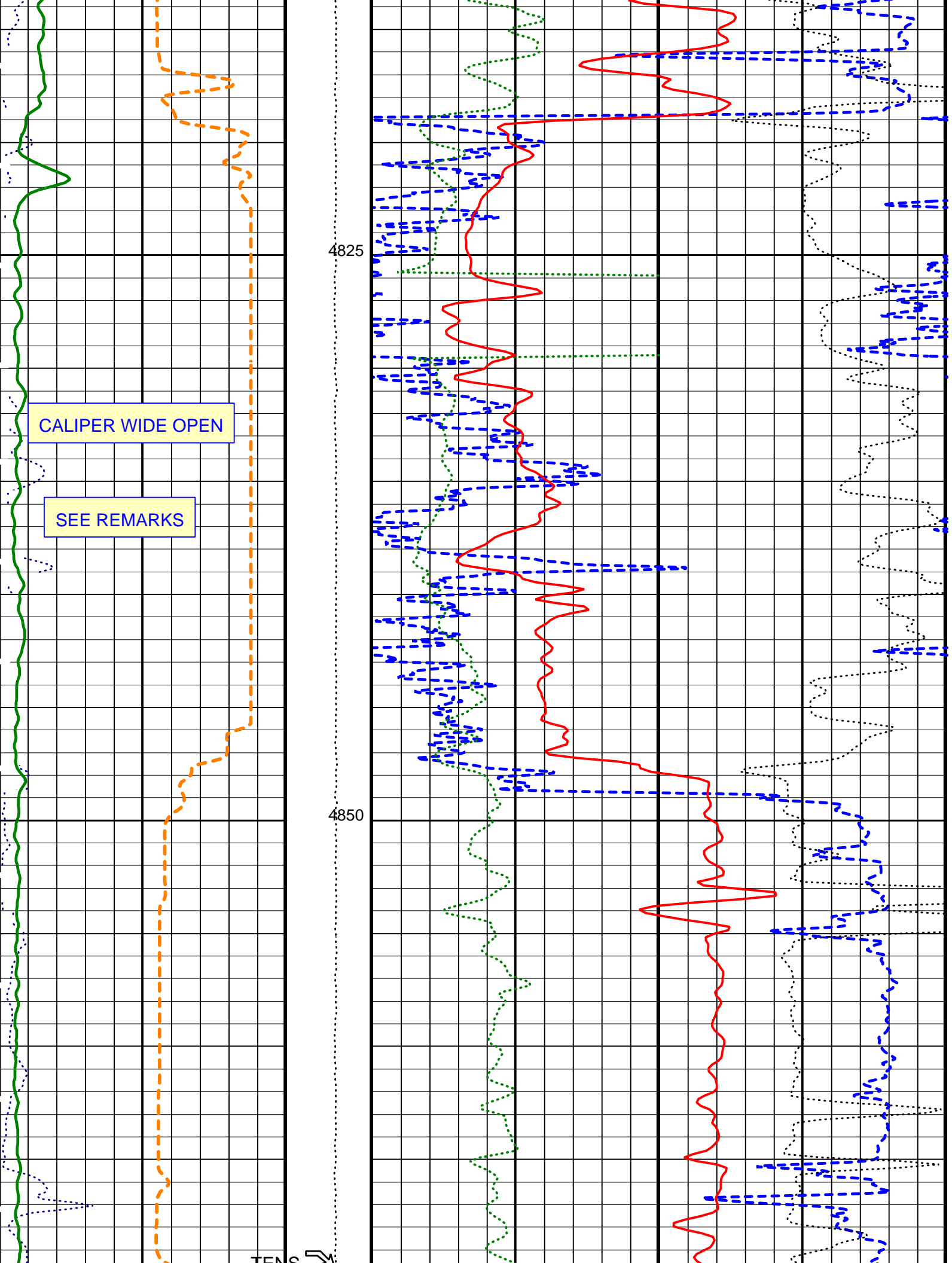


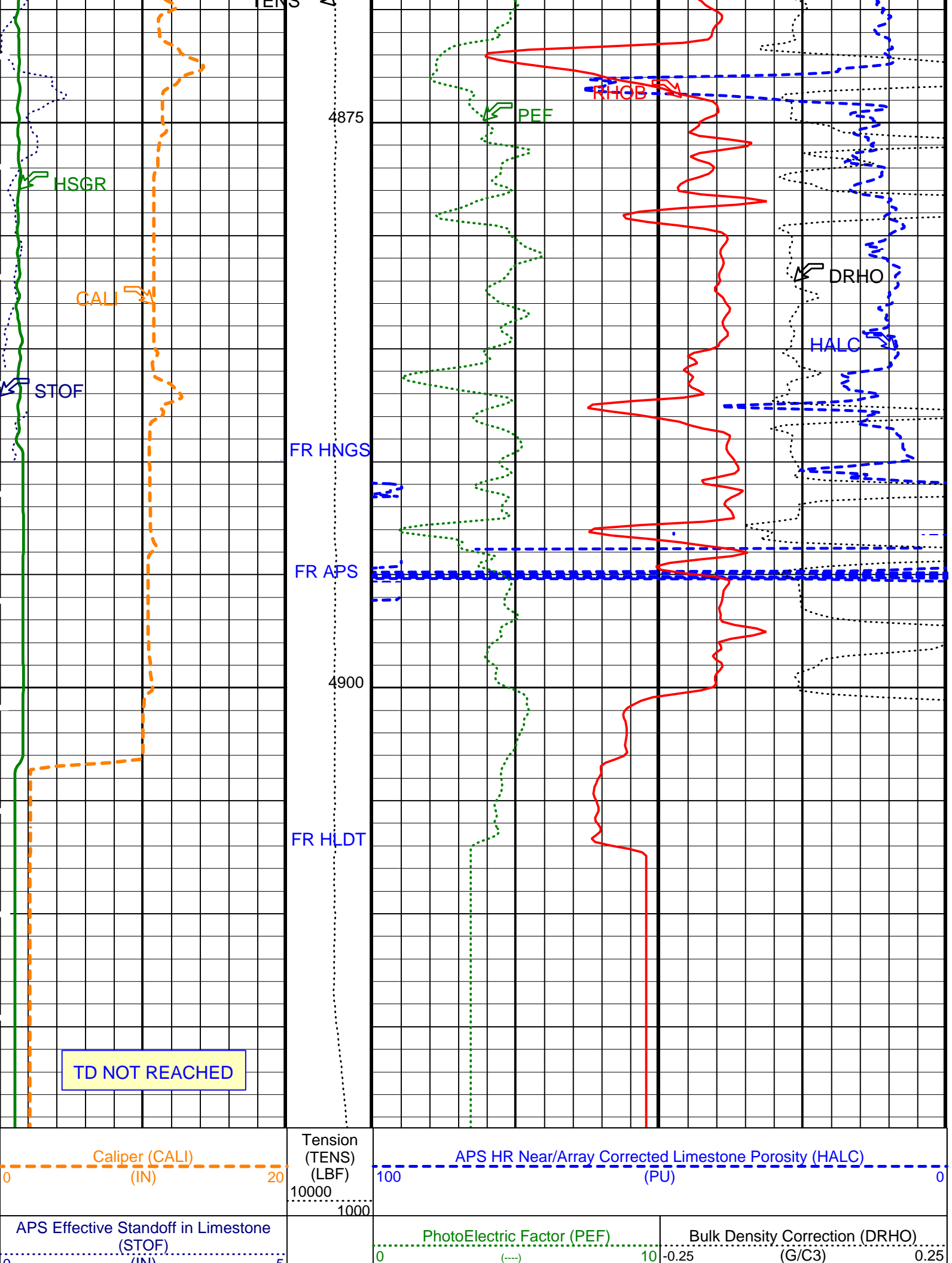












(IN)	5		
HNGS Spectroscopy Gamma Ray (HSGR)			Bulk Density (RHOB)
(GAPI)	100	1	(G/C3)

PIP SUMMARY

Time Mark Every 60 S

Parameters

DLIS Name	Description	Value
DIT-E: Dual Induction - E		
BHS	Borehole Status	OPEN
GCSE	Generalized Caliper Selection	CALI
HLDT-A: Hostile Environment Litho Density - A		
DHC	Density Hole Correction	BS
QPPS	Quicklook Processing Pe Select	PEFL
WMUD	Mud Weight	1.100 g/cm3
APS-BA: Accelerator-Porosity Tool		
BHS	Borehole Status	OPEN
GCSE	Generalized Caliper Selection	CALI
HNGS-BA: Hostile Natural Gamma Ray Sonde		
BAR1	HNGS Detector 1 Barite Constant	1.000
BAR2	HNGS Detector 2 Barite Constant	1.000
BHK	HNGS Borehole Potassium Correction Concentration	0.000
BHS	Borehole Status	OPEN
CSD1	Inner Casing Outer Diameter	0.000 in
CSD2	Outer Casing Outer Diameter	0.000 in
CSW1	Inner Casing Weight	0.000 lbm/ft
CSW2	Outer Casing Weight	0.000 lbm/ft
DBCC	HNGS Barite Constant Correction Flag	NONE
GCSE	Generalized Caliper Selection	CALI
H1P	HNGS Detector 1 Allow/Disallow In Processing	ALLOW
H2P	HNGS Detector 2 Allow/Disallow In Processing	ALLOW
HABK	HNGS Borehole Potassium Running Average	-0.024
HALF	HNGS Alpha Filter Length	60.000 in
HCRB	HNGS Apply Borehole Potassium Correction	NONE
HMWM	Mud Weighting Material	NATU
HNPE	HNGS Processing Enable	YES
S1BI	HNGS Detector 1 Calibration Bismuth Count Rate	1.300 1/s
S2BI	HNGS Detector 2 Calibration Bismuth Count Rate	1.300 1/s
SGRC	HNGS Standard Gamma-Ray Correction Flag	YES
TPOS	Tool Position	ECCE
VBA1	HNGS Detector 1 Variable Barite Factor Running Average	0.954
VBA2	HNGS Detector 2 Variable Barite Factor Running Average	1.043
System and Miscellaneous		
BS	Bit Size	9.875 in
DFD	Drilling Fluid Density	1.100 g/cm3

Format: APSLiquidPorosity_1 Vertical Scale: 1:200 Graphics File Created: 26-Oct-2002 07:06

OP System Version: 10C0-306
MCM

DITE	10C0-306	HLDTA	10C0-306
DTAA	10C0-306	NPLC-BA	OP10-KP1
APS-BA	OP10-KP1	HNGS-BA	OP10-KP1
DTCH	10C0-306		

Input DLIS Files

DEFAULT	PI_LDL_APS_NGS_031PUP	FN:36	PRODUCER	08-Oct-2002 12:53	16140.0 FT	14108.0 FT
---------	-----------------------	-------	----------	-------------------	------------	------------

Company: Lamont Doherty Earth Observatory

Schlumberger

Well: ODP Leg 205, Site 1253A

Field: Costa Rica

Country: Costa Rica

Ocean: Pacific

Accelerator Porosity Sonde

Hostile Litho Density

Positive Linear Density

Gamma Ray