

Company: Lamont Doherty

Well: ODP Leg 207 Site 1257A

Field: Demarara Rise

Country: Venezuela **Ocean:** Atlantic

Long Spaced Sonic Gamma Ray

Country: Venezuela		Field: Demarara Rise		Location: 9.4538 Deg North, 54.342 Deg West		Well: ODP Leg 207 Site 1257A		Company: Lamont Doherty	
LOCATION					9.4538 Deg North, 54.342 Deg West		Elev.: K.B. 11.3 m G.L. -2962 m D.F. 11 m		
Permanent Datum:		MSL		Elev.: 0 m					
Log Measured From:		DES		11.3 m		above Perm. Datum			
Drilling Measured From:		DES							
API Serial No.			Max. Hole Devi.			Longitude		Latitude	
18-Jan-2003									

Logging Date	18-Jan-2003				
Run Number	1				
Depth Driller	3246 m				
Schlumberger Depth	3249 m				
Bottom Log Interval	3232 m				
Top Log Interval	2962 m				
Casing Driller Size @ Depth	0.000 in @ 3032 m				
Casing Schlumberger	3036 m				
Bit Size	11.438 in				
Type Fluid In Hole	Sepiolite Salt Water				
Density	1.1 g/cm3				
Fluid Loss	PH				
Source Of Sample	Mudpit				
RM @ Measured Temperature	0.258 ohm.m @ 32 degC				
RMF @ Measured Temperature	@ @				
RMC @ Measured Temperature	@ @				
Source RMF	RMC				
RM @ MRT	0.415 @ 12 @ 12				
Maximum Recorded Temperatures	12 degC				
Circulation Stopped	Time				
Logger On Bottom	19-Jan-2003		7:12		
Unit Number	99		Houston, TX ODP		
Recorded By	K. Swain				
Witnessed By	B. Rea, F. Heidersdorf				

Logging Date						Run 1	Run 2	Run
Run Number								
Depth Driller								
Schlumberger Depth								
Bottom Log Interval								
Top Log Interval								
Casing Driller Size @ Depth								
Casing Schlumberger								
Bit Size								
Type Fluid In Hole								
Density								
Fluid Loss								
Source Of Sample								
RM @ Measured Temperature								
RMF @ Measured Temperature								
RMC @ Measured Temperature								
Source RMF								
RM @ MRT								
Maximum Recorded Temperatures								
Circulation Stopped								
Logger On Bottom								
Unit Number								
Recorded By								
Witnessed By								

DISCLAIMER

THE USE OF AND RELIANCE UPON THIS RECORDED-DATA BY THE HEREIN NAMED COMPANY (AND ANY OF ITS AFFILIATES, PARTNERS, REPRESENTATIVES, AGENTS, CONSULTANTS AND EMPLOYEES) IS SUBJECT TO THE TERMS AND CONDITIONS AGREED UPON BETWEEN SCHLUMBERGER AND THE COMPANY, INCLUDING: (a) RESTRICTIONS ON USE OF THE RECORDED-DATA; (b) DISCLAIMERS AND WAIVERS OF WARRANTIES AND REPRESENTATIONS REGARDING COMPANY'S USE OF AND RELIANCE UPON THE RECORDED-DATA; AND (c) CUSTOMER'S FULL AND SOLE RESPONSIBILITY FOR ANY INFERENCE DRAWN OR DECISION MADE IN CONNECTION WITH THE USE OF THIS RECORDED-DATA.



OTHER SERVICES1 OS1: FMS/LSS OS2: DITE/HLDS/APS/HNGS OS3: WST OS4: OS5:	OTHER SERVICES2 OS1: OS2: OS3: OS4: OS5:
--	---

REMARKS: RUN NUMBER 1 Hole cored with APS/XCB, 11 7/16 bit. Sea Floor at:2962 mbrf. Log measured in meters below rig floor. Lamont TAP tool run at bottom of DITE for temperature/pressure data. Wireline heave compensator used on all runs. Sepiolite mud was used to displace the hole. Driller TD= 3246 mbrf. Schlumberger TD= 3249 mbrf. Drill pipe Schlumberger= 3036mbrf. See Lamont TAP tool for bottom hole temperature.	REMARKS: RUN NUMBER 2
---	-----------------------

RUN 1			RUN 2		
SERVICE ORDER #:	10C0-306		SERVICE ORDER #:		
PROGRAM VERSION:			PROGRAM VERSION:		
FLUID LEVEL:			FLUID LEVEL:		
LOGGED INTERVAL	START	STOP	LOGGED INTERVAL	START	STOP

EQUIPMENT DESCRIPTION

RUN 1		RUN 2	
SURFACE EQUIPMENT			
GSR-U/Y WITM (DTS)-A			

DOWNHOLE EQUIPMENT			
LEH-QT		24.81	
LEH-QT			
DTC-H	CTEM TelStatus ToolStatu	23.65	23.93
ECH-KC 9841		23.01	
AH-MCD-Upper		23.01	

AH-MCD-Upper 2

DSLTT-FTB
DSLCT-B 8200
ECH-KH 8251
SLS-ZA 674

20.73

ULF 17.20
LLF ULN 16.90
LLN 16.59

DSLTT Aux. 13.47

SGT-N
SGH-K 2450
SGC-TB 9585
SGD-TAA

Gamma Ray 13.19 13.47

AH-MCD-Lower
AH-MCD-Lower 1

11.79

DTA-A
ECH-KE 8455
DTA-A 8261

9.66

MEST-B
MEAH-B 701
MEAC-A 833
MEPH-A 702
GPIC-A 719
MEPC-AB
MEDS-B 771

8.45

MEDR MEAC
MEPC MEDS-B 1.22

AH-GDVL
AH-GDVL

HV DF
Tension GPIT 0.00

0.76

TOOL ZERO

MAXIMUM STRING DIAMETER 4.50 IN
MEASUREMENTS RELATIVE TO TOOL ZERO
ALL LENGTHS IN METERS

Input DLIS Files

DEFAULT
 FMS_SONIC_021LUP
 FN:29
 PRODUCER
 19-Jan-2003 08:30
 3250.7 M
 3025.1 M

OP System Version: 10C0-306

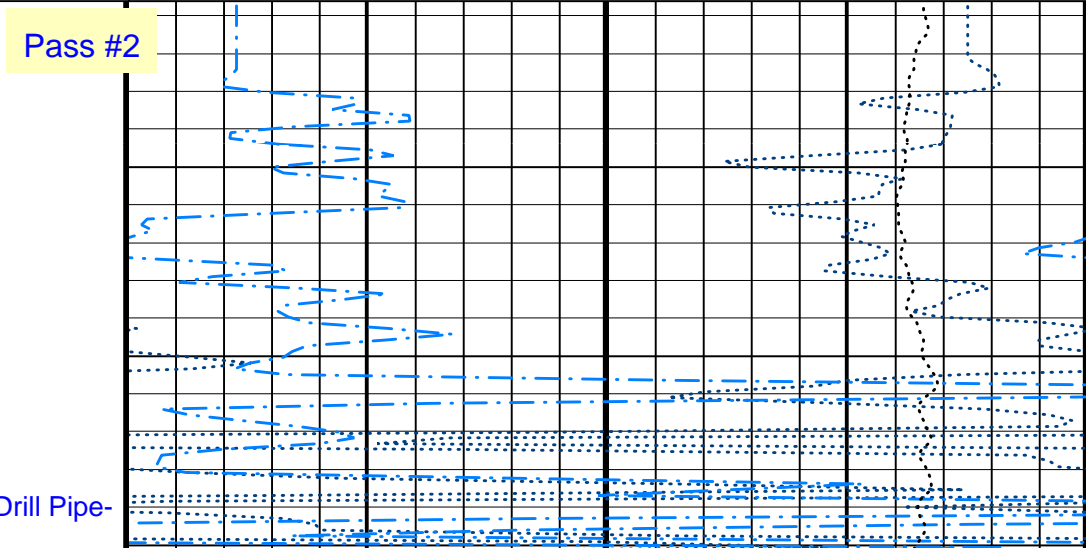
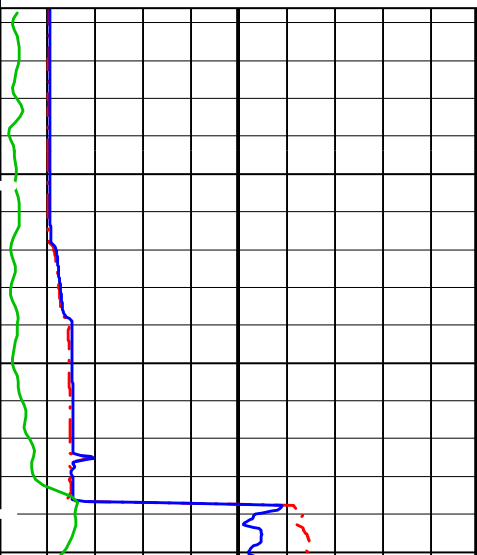
MCM

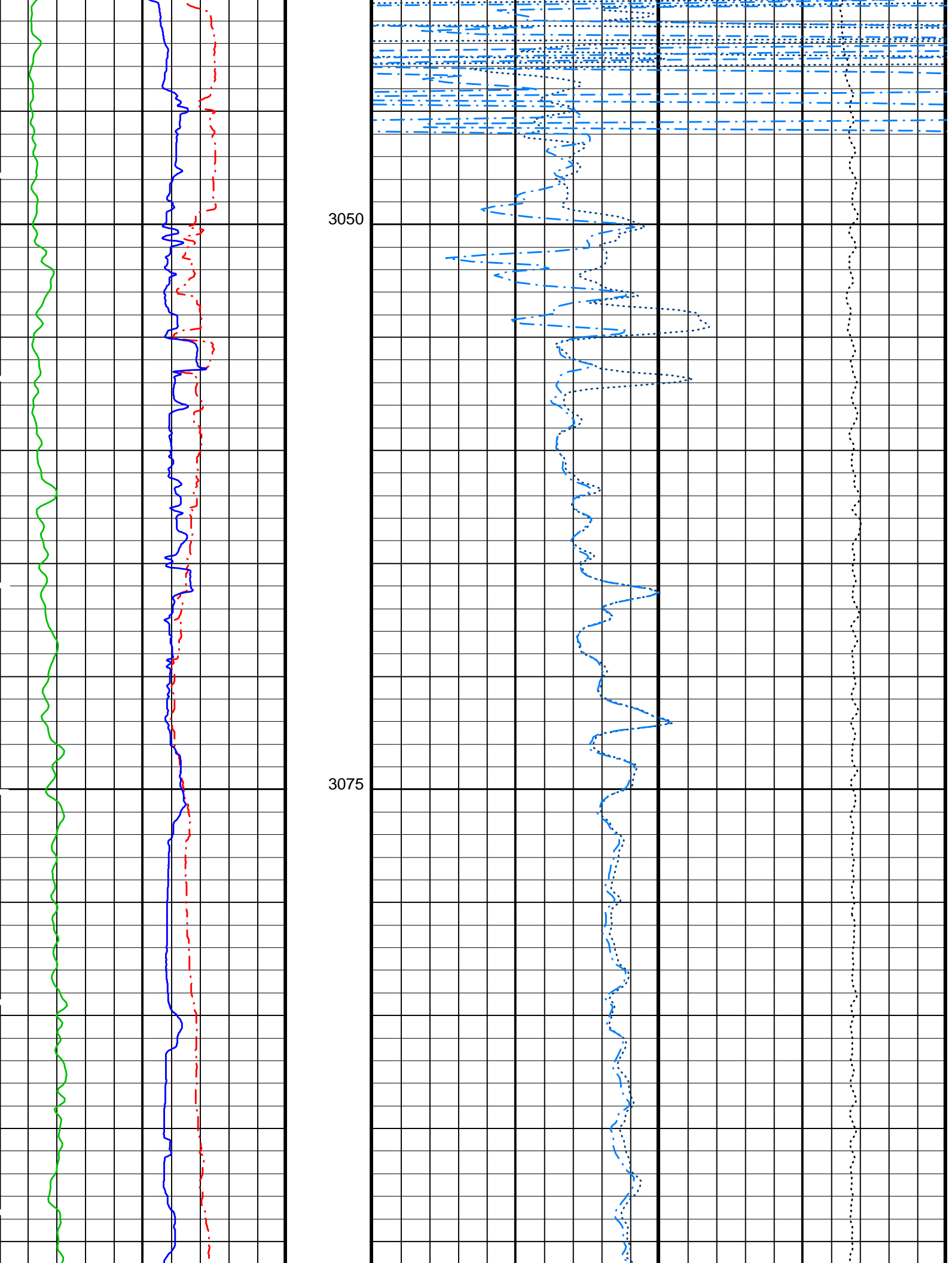
MEST-B	10C0-306	DTA-A	10C0-306
SGT-N	10C0-306	DSL-FTB	OP10-KP1
DTC-H	10C0-306		

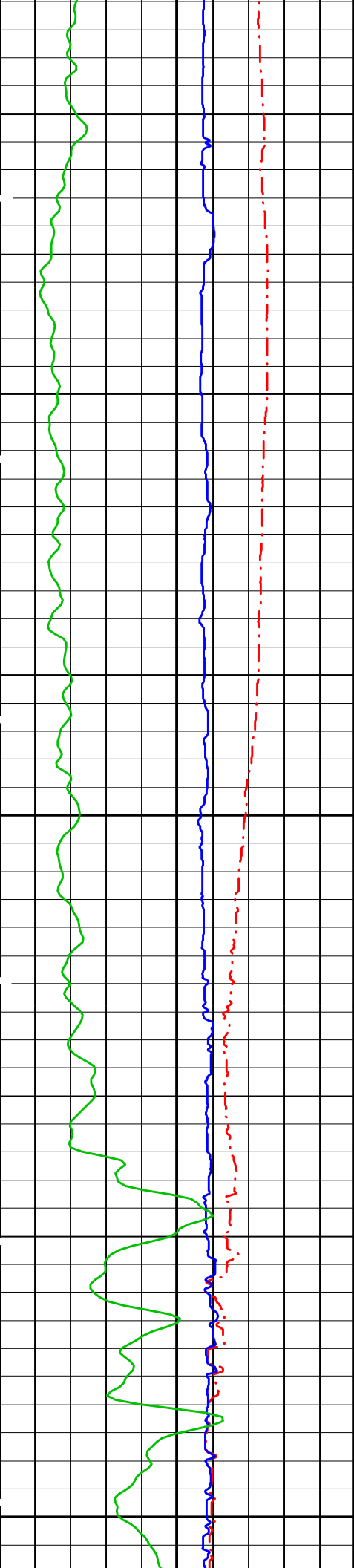
PIP SUMMARY

Time Mark Every 60 S

Gamma Ray (GR) (GAPI) 0 150	Tension (TENS) (LBF) 10000 0
Caliper 2 (C2) (IN) 0 20	Delta-T Long Spacing Far (DTLF) (US/F) 250 50
Caliper 1 (C1) (IN) 0 20	Delta-T Long Spacing Near (DTLN) (US/F) 250 50



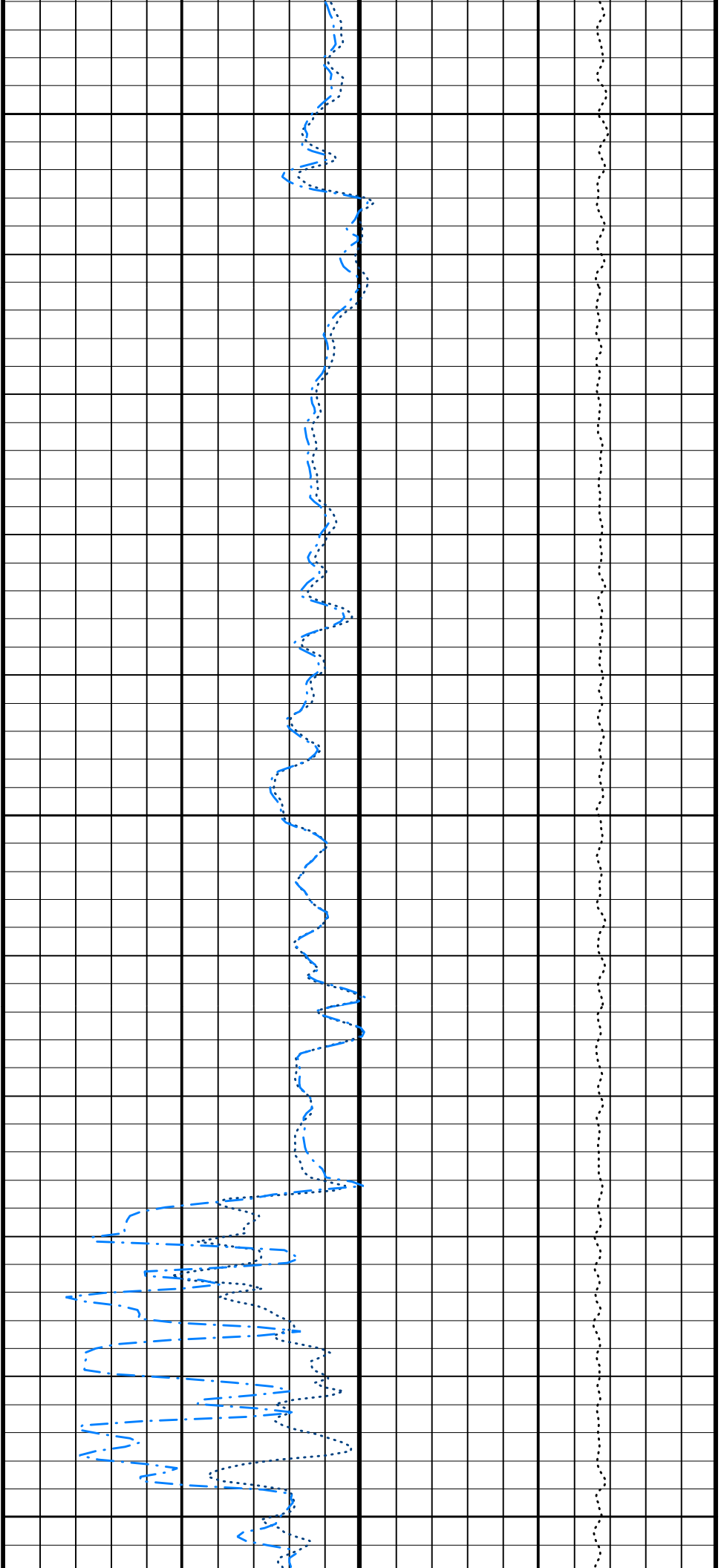


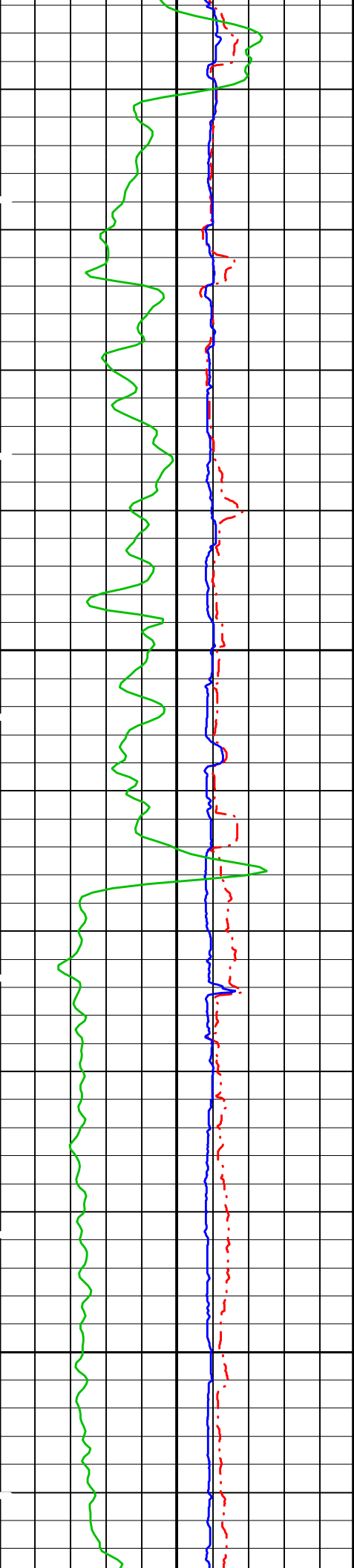


3100

3125

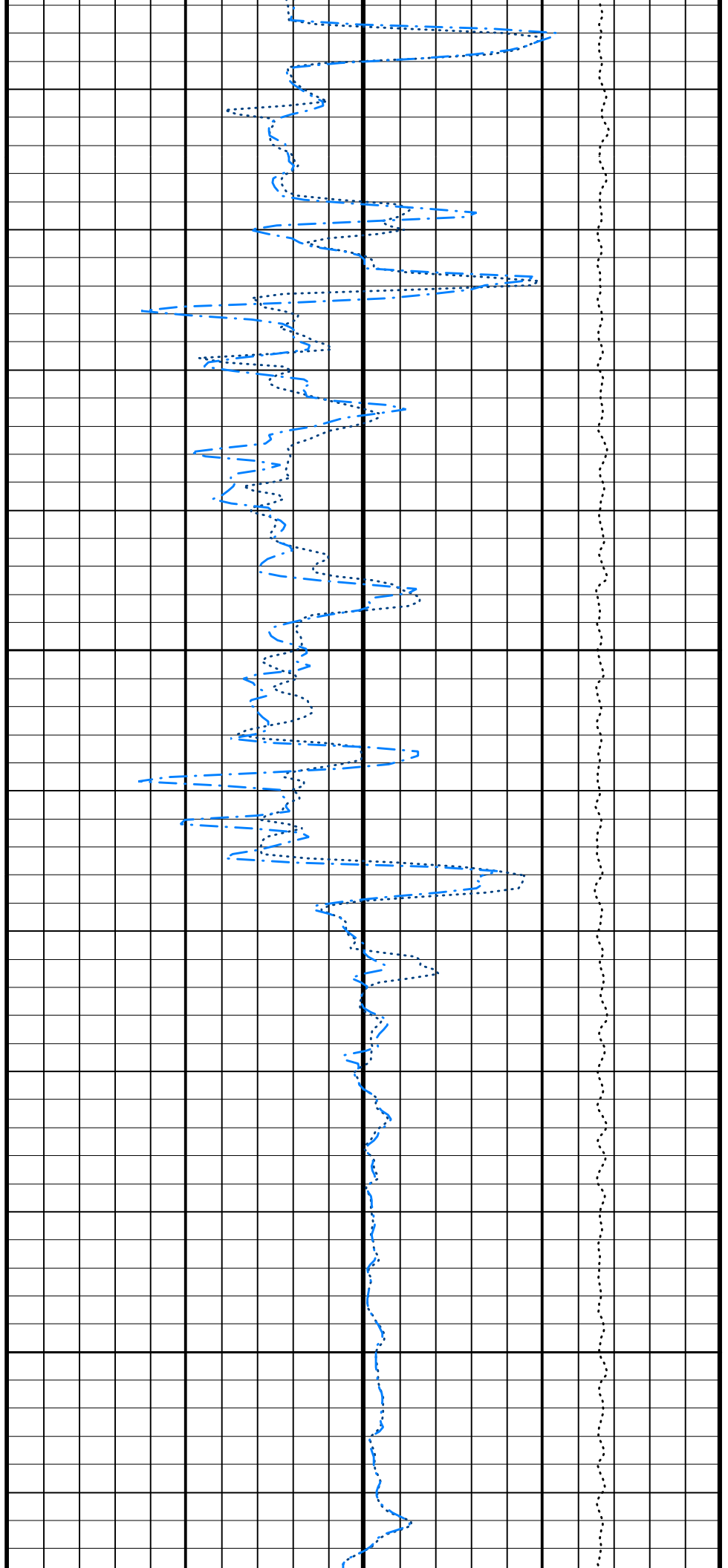
3150

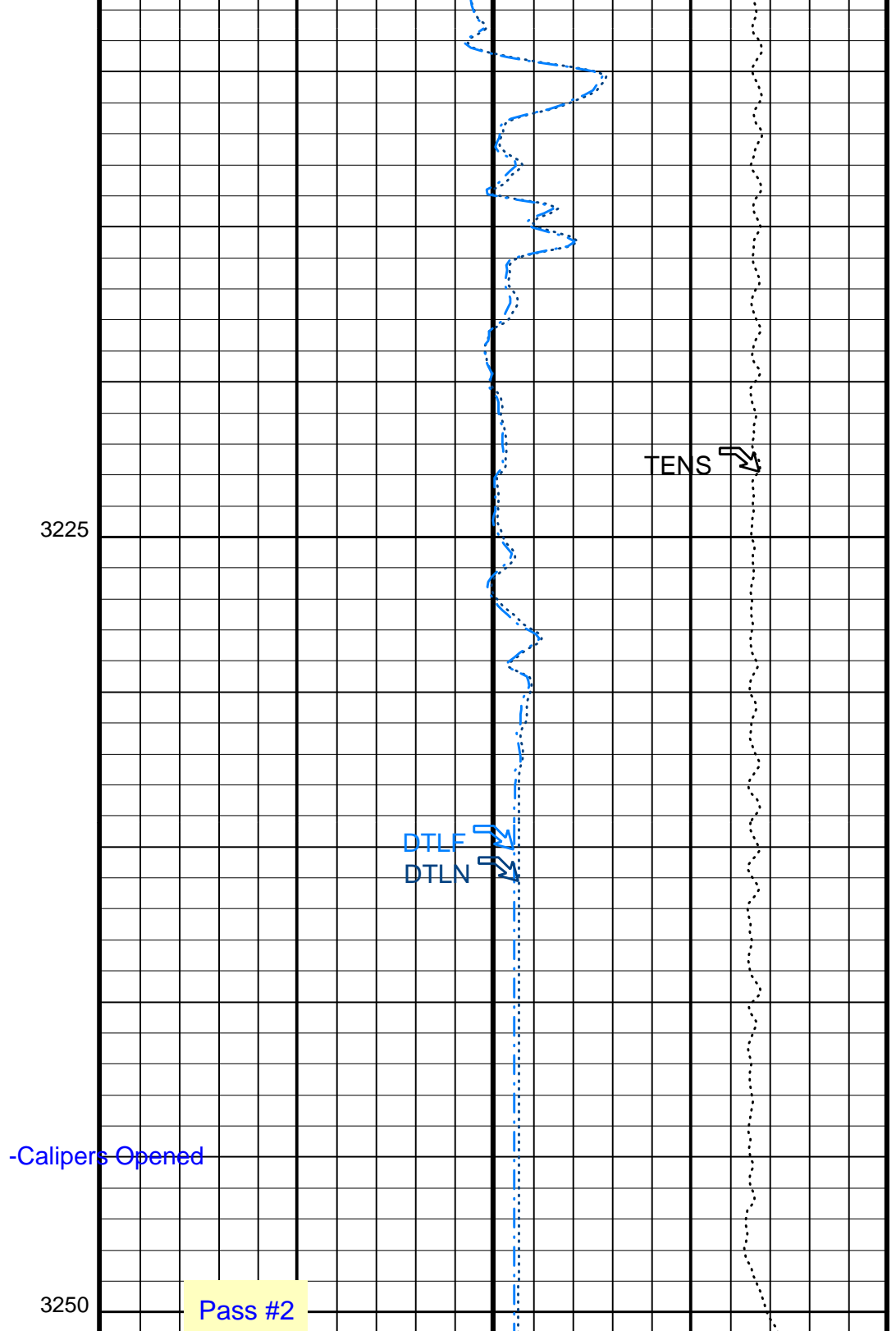
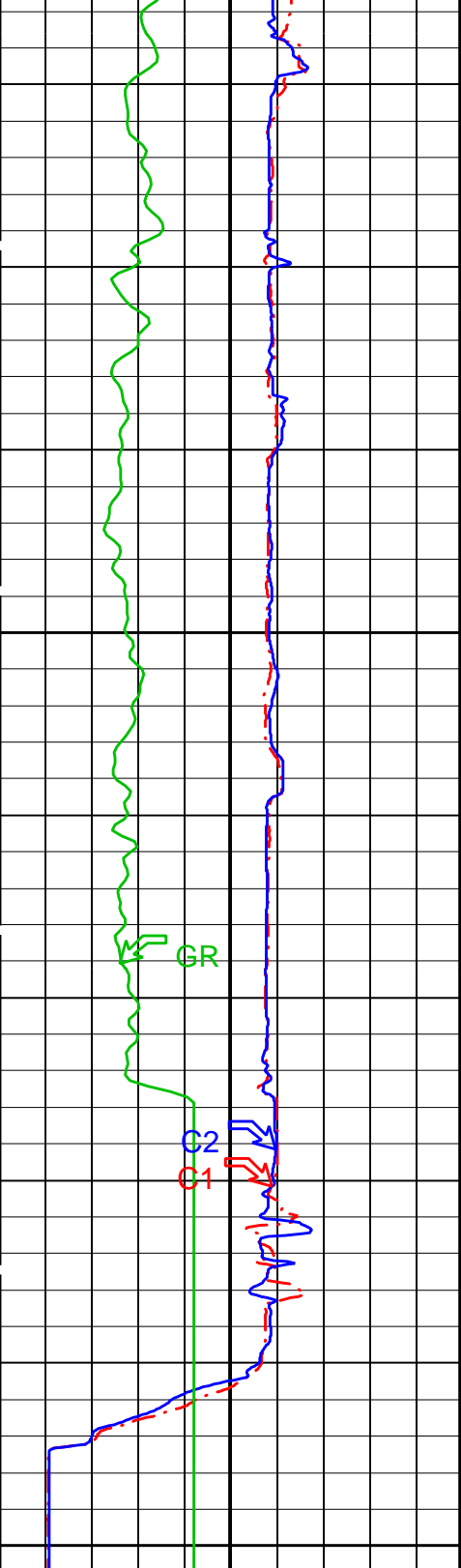




3175

3200





0	Caliper 1 (C1) (IN)	20
0	Caliper 2 (C2) (IN)	20
0	Gamma Ray (GR) (GAPI)	150

250	Delta-T Long Spacing Near (DTLN) (US/F)	50
250	Delta-T Long Spacing Far (DTLF) (US/F)	50
10000	Tension (TENS) (LBF)	0

-TD- PIP SUMMARY

DLIS Name	Description	Value
-----------	-------------	-------

Pass #2

-Calipers Opened

DTLF
DTLN

TENS

3225

3250

DDEL	Telemetry Mode	DSLTL-FTB	
DFAD_TYPE	DSLTL Firing Mode	BHC	
DIVL	Digitizing Delay	0	US
DRCS	DFAD type	DFAD2	
DSIN	DSLTL Depth Sampling Interval	20	
DTFS	DSLTL DLIS Recording Size	250	
DWCO	Digitizing Sample Interval	10	
GAI	DSLTL Telemetry Frame Size	536	
MAHTR	Digitizing Word Count	250	
MGAI	Manual Gain	40	
MNHTR	Manual High Threshold Reference	40	
NMSG	Maximum Gain	60	
NMXG	Minimum High Threshold Reference	30	
RATE	Near Minimum Sliding Gate	372	US
SFAF	Near Maximum Sliding Gate	2220	US
SGCL	Firing Rate	R15	
SGDT	Sonic Formation Attenuation Factor	3	DB/M
SGW	Sliding Gate Closing Delta-T	200	US/F
SLEV	Sliding Gate Delta-T	75	US/F
WMOD	Sliding Gate Width	140	US
	Signal Level for AGC	4000	
	Waveform Firing Mode	FULL	
	System and Miscellaneous		
DO	Depth Offset for Playback	0.0	M
PP	Playback Processing	NORMAL	

Format: SONI Vertical Scale: 1:200 Graphics File Created: 20-Jan-2003 16:12

OP System Version: 10C0-306

MCM

MEST-B	10C0-306	DTA-A	10C0-306
SGT-N	10C0-306	DSLTL-FTB	OP10-KP1
DTC-H	10C0-306		

Input DLIS Files

DEFAULT	FMS_SONIC_021LUP	FN:29	PRODUCER	19-Jan-2003 08:30	3250.7 M	3025.1 M
---------	------------------	-------	----------	-------------------	----------	----------

Input DLIS Files

DEFAULT	FMS_SONIC_020LUP	FN:27	PRODUCER	19-Jan-2003 07:12	3251.3 M	3022.5 M
---------	------------------	-------	----------	-------------------	----------	----------

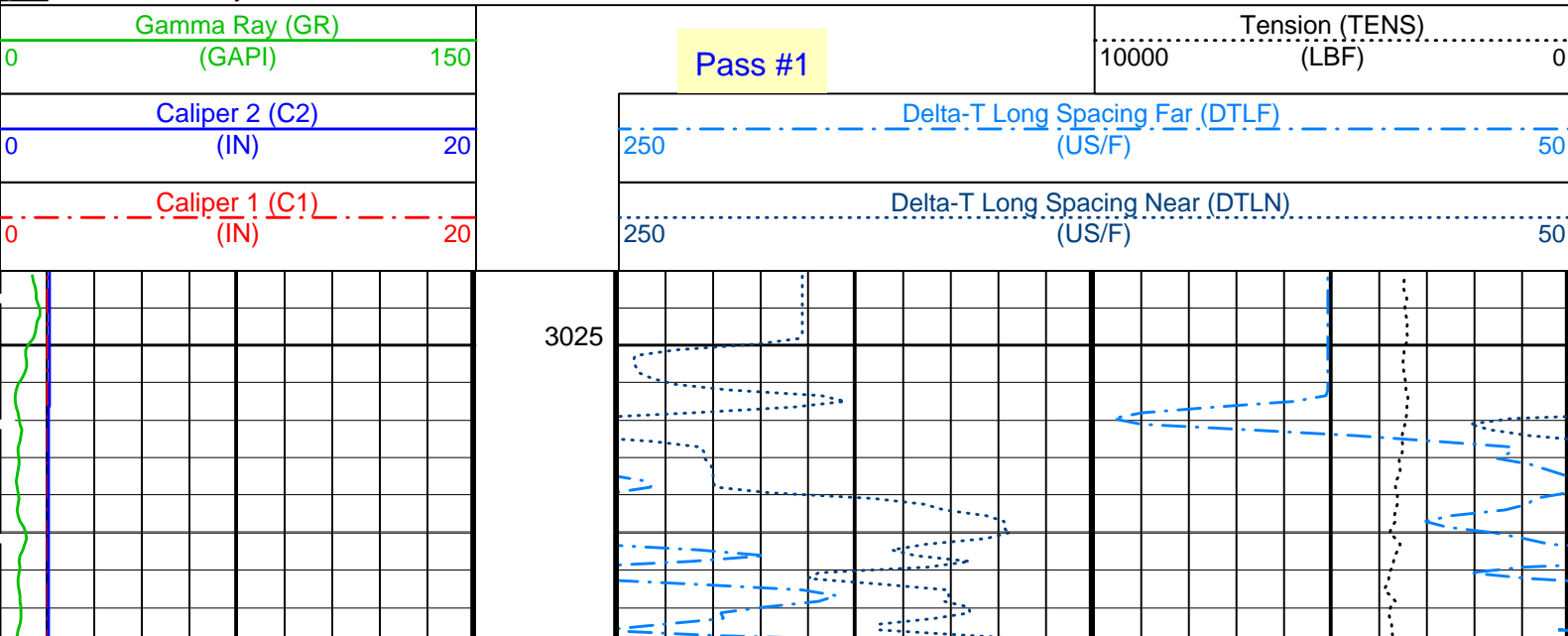
OP System Version: 10C0-306

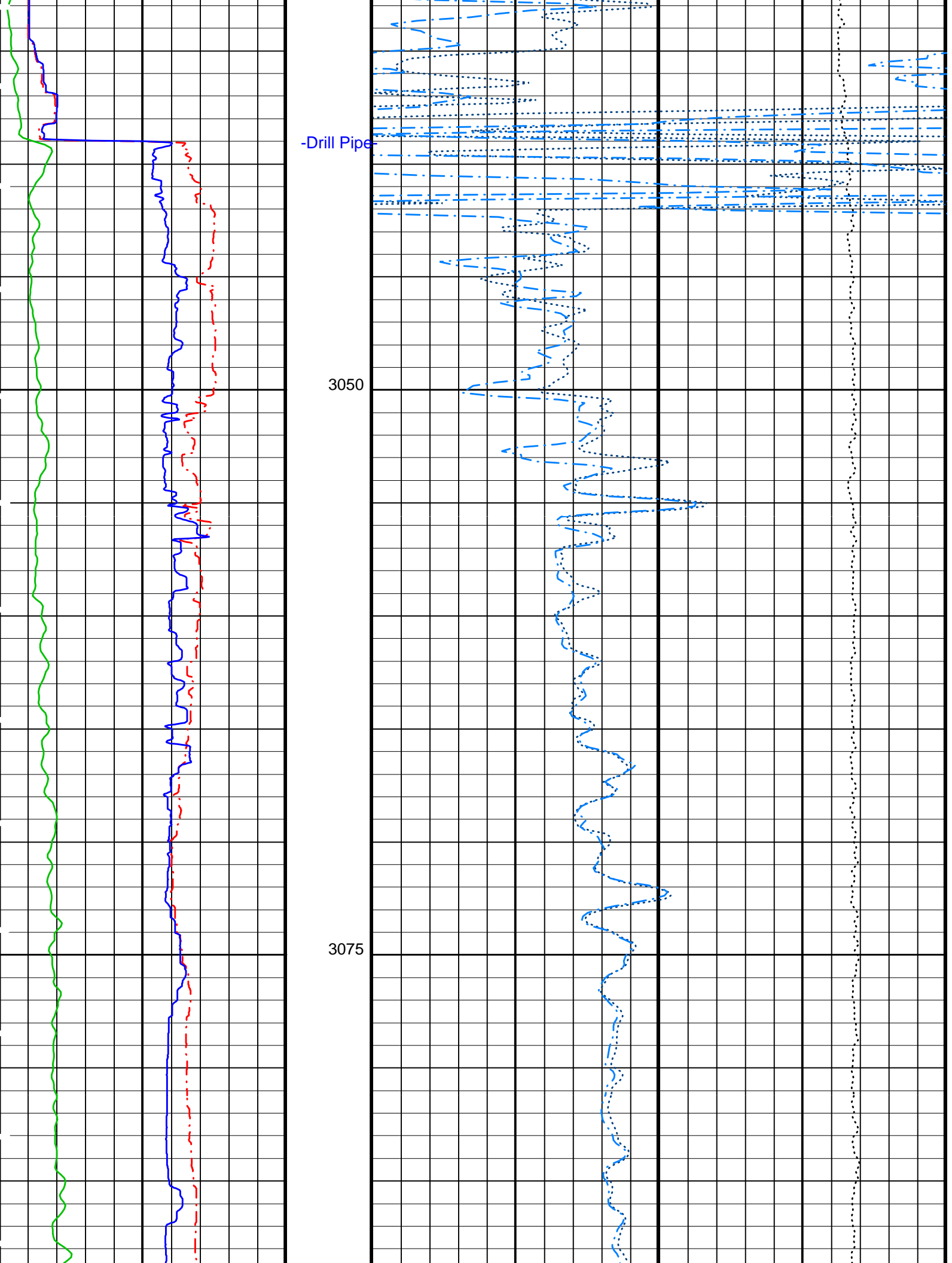
MCM

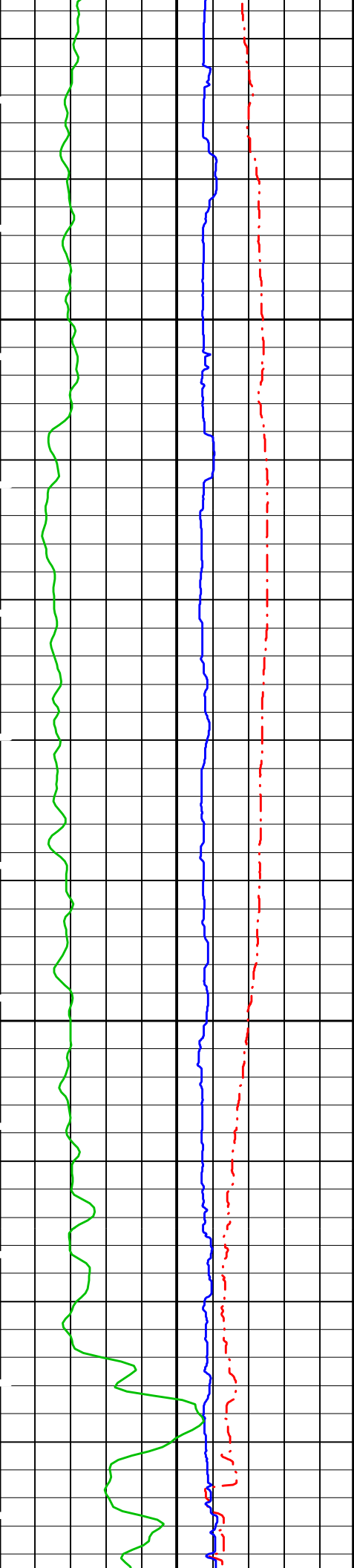
MEST-B	10C0-306	DTA-A	10C0-306
SGT-N	10C0-306	DSLTL-FTB	OP10-KP1
DTC-H	10C0-306		

PIP SUMMARY

Time Mark Every 60 S

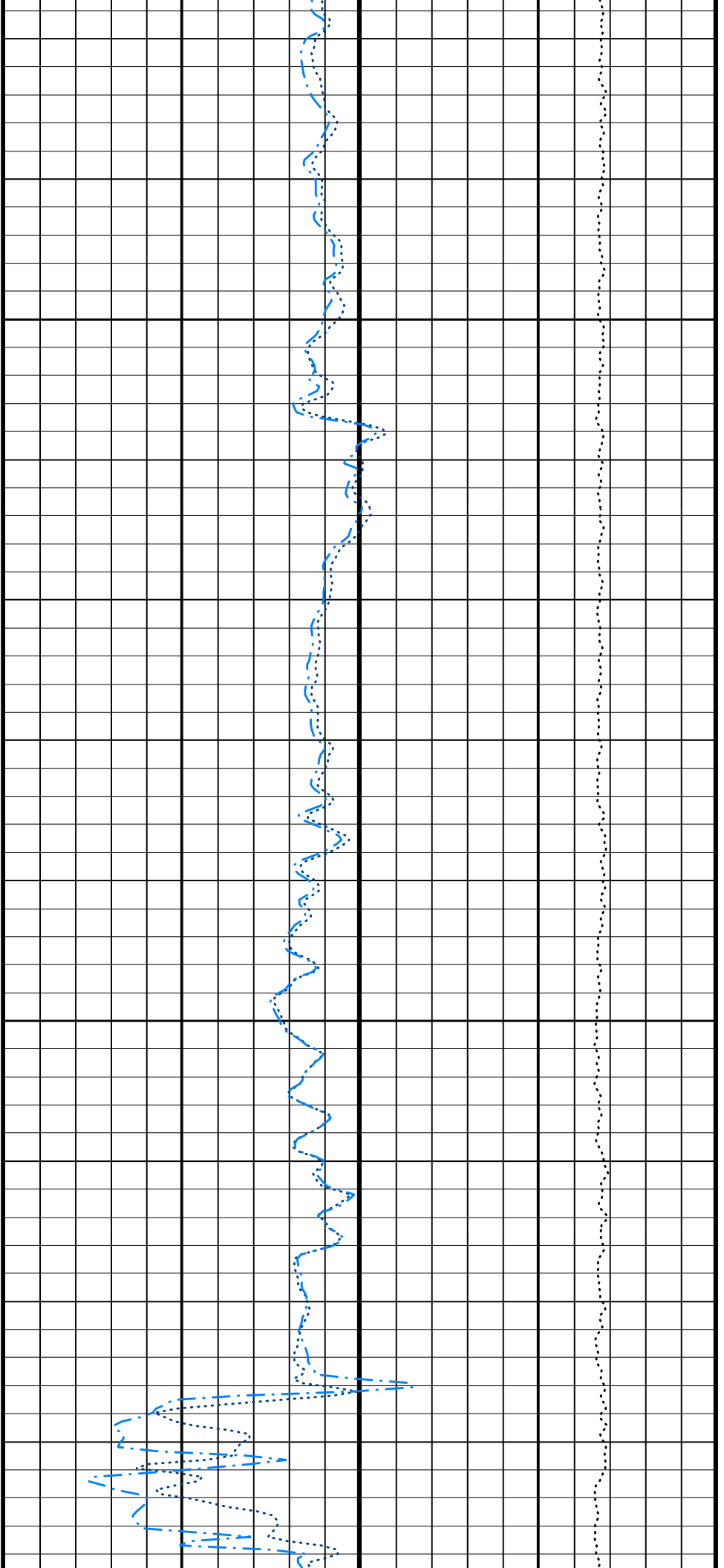


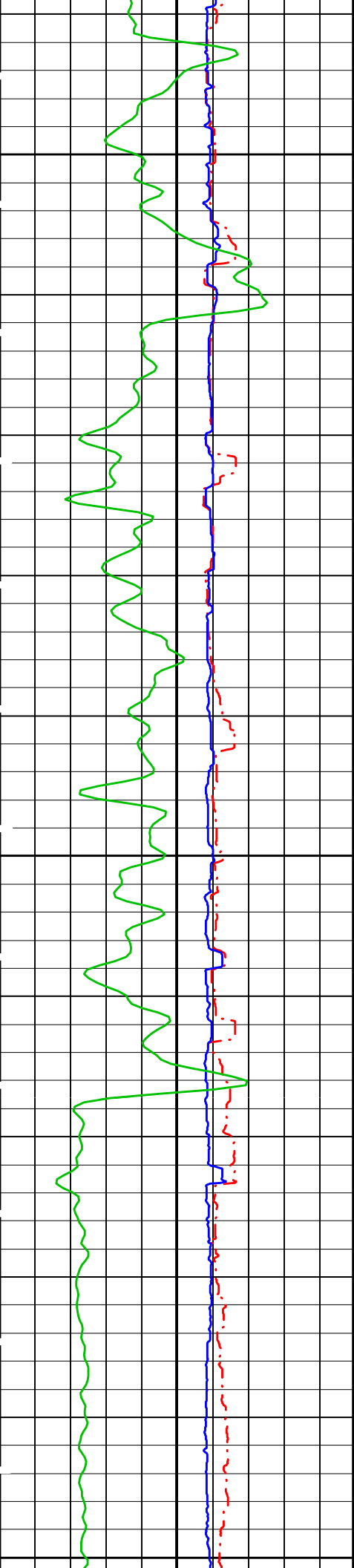




3100

3125

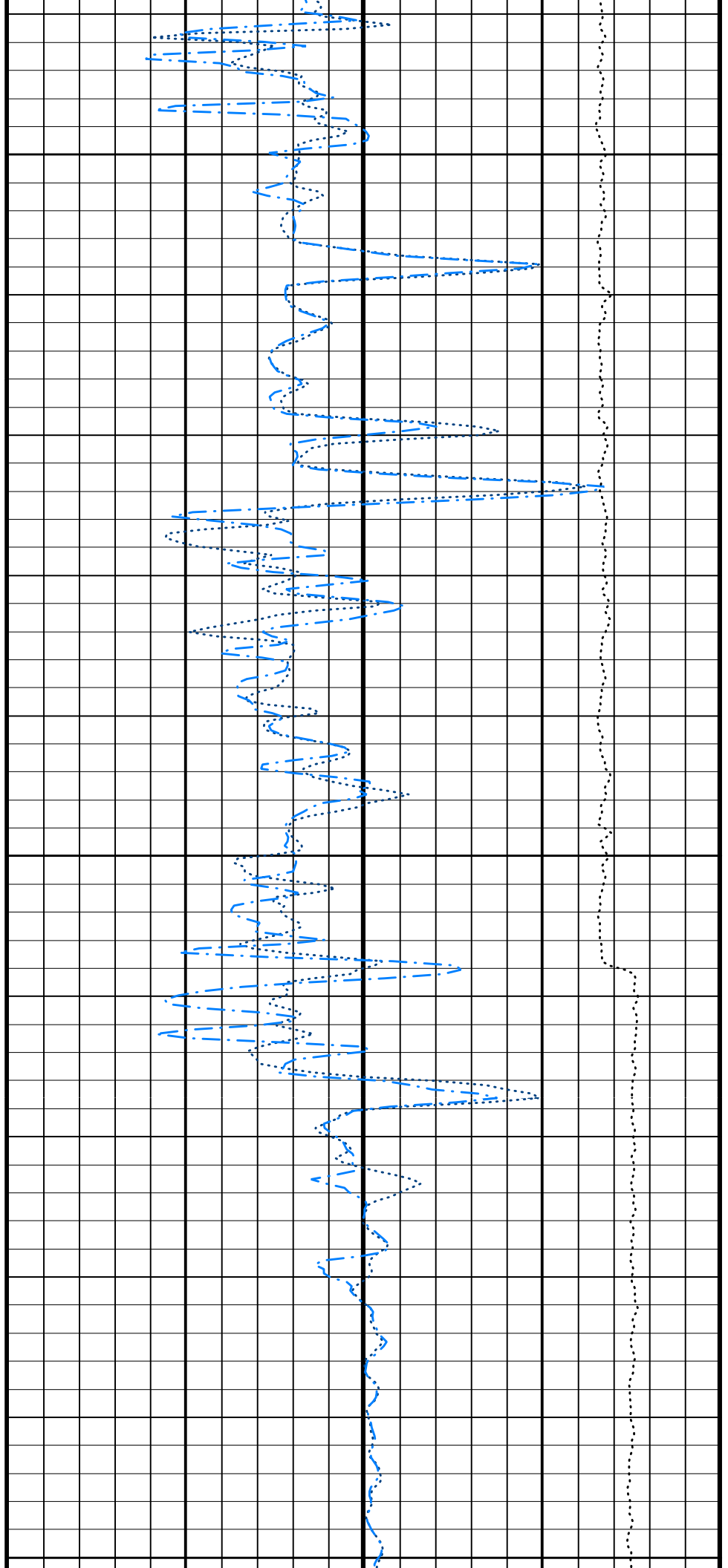


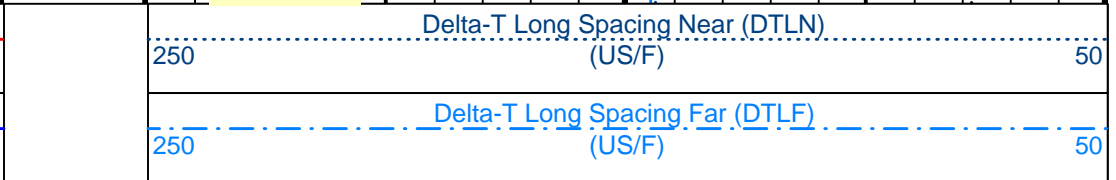
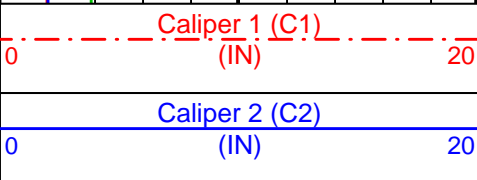
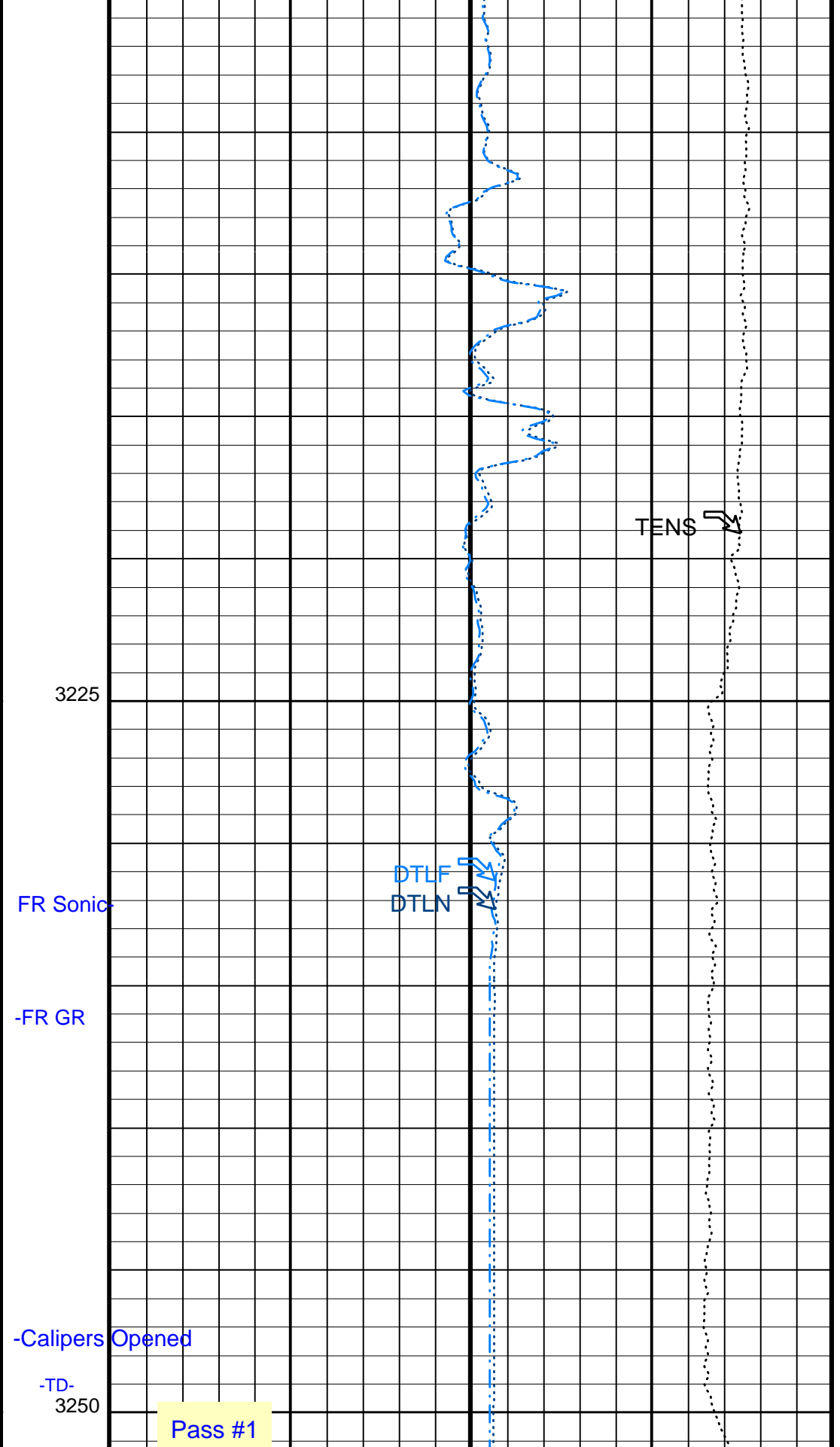
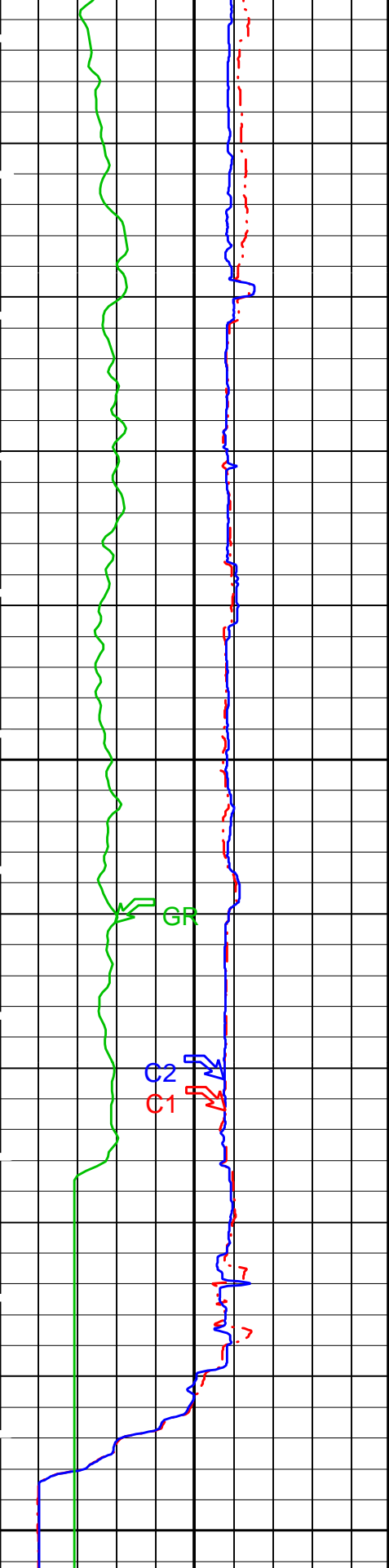


3150

3175

3200





Pass #1

PIP SUMMARY

Time Mark Every 60 S

Parameters

DLIS Name	Description	Value
DSLTL-FTB:	Digitizing Sonic Logging Tool	
	Telemetry Mode	DSLCL_FTB
	DSLTL Firing Mode	BHC
DDEL	Digitizing Delay	0 US
DFAD_TYPE	DFAD type	DFAD2
DIVL	DSLTL Depth Sampling Interval	20
DRCS	DSLTL DLIS Recording Size	250
DSIN	Digitizing Sample Interval	10
DTFS	DSLCL Telemetry Frame Size	536
DWCO	Digitizing Word Count	250
GAI	Manual Gain	40
MAHTR	Manual High Threshold Reference	40
MGAI	Maximum Gain	60
MNHTR	Minimum High Threshold Reference	30
NMSG	Near Minimum Sliding Gate	372 US
NMXG	Near Maximum Sliding Gate	2220 US
RATE	Firing Rate	R15
SFAF	Sonic Formation Attenuation Factor	3 DB/M
SGCL	Sliding Gate Closing Delta-T	200 US/F
SGDT	Sliding Gate Delta-T	75 US/F
SGW	Sliding Gate Width	140 US
SLEV	Signal Level for AGC	4000
WMOD	Waveform Firing Mode	FULL
System and Miscellaneous		
DO	Depth Offset for Playback	0.0 M
PP	Playback Processing	NORMAL

Format: SONI Vertical Scale: 1:200 Graphics File Created: 20-Jan-2003 16:05

OP System Version: 10C0-306

MCM

MEST-B	10C0-306	DTA-A	10C0-306
SGT-N	10C0-306	DSLTL-FTB	OP10-KP1
DTC-H	10C0-306		

Input DLIS Files

DEFAULT	FMS_SONIC_020LUP	FN:27	PRODUCER	19-Jan-2003 07:12	3251.3 M	3022.5 M
---------	------------------	-------	----------	-------------------	----------	----------

Calibration and Check Summary

Measurement	Nominal	Master	Before	After	Change	Limit	Units
Micro Electrical Scanner - B (Slim) Wellsite Calibration - Caliper Calibration							
Before: 13-Jan-2003 8:27							
Caliper 1 Zero Measurement	12.00	N/A	12.79	N/A	N/A	N/A	IN
Caliper 2 Zero Measurement	12.00	N/A	12.83	N/A	N/A	N/A	IN
Caliper 1 Plus Measurement	15.00	N/A	15.78	N/A	N/A	N/A	IN
Caliper 2 Plus Measurement	15.00	N/A	15.84	N/A	N/A	N/A	IN
Micro Electrical Scanner - B (Slim) Wellsite Calibration - CROUZET ACCELEROMETER PROM HAS BEEN READ CORRECTLY							
Before: 14-Jan-2003 22:29							
TEMPERATURE REFERENCE :	N/A	N/A	20	N/A	N/A	N/A	DEGC
YEAR OF CALIBRATION :	N/A	N/A	92	N/A	N/A	N/A	
MONTH OF CALIBRATION :	N/A	N/A	10	N/A	N/A	N/A	
SERIAL NUMBER :	N/A	N/A	448	N/A	N/A	N/A	
Micro Electrical Scanner - B (Slim) Wellsite Calibration - CROUZET MAGNETOMETER PROM HAS BEEN READ CORRECTLY							
Before: 14-Jan-2003 22:29							
TEMPERATURE REFERENCE :	N/A	N/A	19	N/A	N/A	N/A	DEGC
YEAR OF CALIBRATION :	N/A	N/A	99	N/A	N/A	N/A	
MONTH OF CALIBRATION :	N/A	N/A	12	N/A	N/A	N/A	
SERIAL NUMBER :	N/A	N/A	428	N/A	N/A	N/A	

Scintillation Gamma-Ray - N Wellsite Calibration - Detector Calibration

Before: 14-Jan-2003 17:22

Gamma Ray (Jig - Bkg)	163.9	N/A	163.9	N/A	N/A	14.90	GAPI
Gamma Ray (Calibrated)	165.0	N/A	165.0	N/A	N/A	15.00	GAPI

Micro Electrical Scanner - B (Slim) / Equipment Identification

Primary Equipment:

MEST Sonde - B	MEDS - B	771
MEST Preamplifier Cartridge - AB	MEPC - AB	
GPIT Cartridge - A	GPIC - A	719
MEST Acquisition Cartridge - A	MEAC - A	833

Auxiliary Equipment:

MEST-B Preamplifier Cartridge Housing	MEPH - A	702
MEST Acquisition Cartridge Housing (Slim)	MEAH - B	701

Scintillation Gamma-Ray - N / Equipment Identification

Primary Equipment:

Scintillation Gamma Cartridge	SGC - TB	9585
Scintillation Gamma Detector	SGD - TAA	

Auxiliary Equipment:

Scintillation Gamma Housing	SGH - K	2450
Gamma Source Radioactive	GSR - U/Y	

Scintillation Gamma-Ray - N Wellsite Calibration

Detector Calibration

Phase	Gamma Ray Background	GAPI	Value	Phase	Gamma Ray (Jig - Bkg)	GAPI	Value	Phase	Gamma Ray (Calibrated)	GAPI	Value
Before			4.177	Before			163.9	Before			165.0
	0 (Minimum)				149.0 (Minimum)				150.0 (Minimum)		
	30.00 (Nominal)				163.9 (Nominal)				165.0 (Nominal)		
	120.0 (Maximum)				178.8 (Maximum)				180.0 (Maximum)		

Before: 14-Jan-2003 17:22

Company: Lamont Doherty

Schlumberger

Well: ODP Leg 207 Site 1257A

Field: Demarara Rise

Country: Venezuela

Ocean: Atlantic

Long Spaced Sonic
Gamma Ray