

Company: Lamont Doherty

Well: ODP Leg 208, Site 1263A

Field: Walvis Ridge

Country: Africa

Ocean: Atlantic Ocean

Dipole Sonic/GR

Country: Africa		Location: Rig- Joides Resolution		Well: ODP Leg 208, Site 1263A		Company: Lamont Doherty	
LOCATION				Permanent Datum: _____		GROUND LEVEL	
				Log Measured From: <u>DES</u>		Elev.: 0 m	
API Serial No. _____				Max. Hole Devi. _____		Longitude 2.7795 E	
						Latitude 28.5329 S	

Logging Date			
Run Number	1		
Depth Driller	3073.84 m		
Schlumberger Depth	2900.5 m		
Bottom Log Interval	2900 m		
Top Log Interval	2802 m		
Casing Driller Size @ Depth	0.000 in @ 2810.35 m		
Casing Schlumberger	2814 m		
Bit Size	9.875 in		

Type Fluid In Hole		Septolite			
Density	Viscosity	1.066 g/cm3			
Fluid Loss	PH				
Source Of Sample					
RM @ Measured Temperature		0.322 ohm.m @		23 degC @	
RMF @ Measured Temperature				@	
RMC @ Measured Temperature				@	
Source RMF	RMC				
RM @ MRT	RMF @ MRT	0.362 @ 18		@ 18	@
Maximum Recorded Temperatures		18 degC			
Circulation Stopped	Time	4/1/03		0100	
Logger On Bottom	Time	4/1/03		See Log	
Unit Number	Location	99	Houston		
Recorded By			Steve Kittredge		
Witnessed By			Philippe Galliot		

	Run 1	Run 2	Run 3

Logging Date			
Run Number			
Depth Driller			
Schlumberger Depth			
Bottom Log Interval			
Top Log Interval			
Casing Driller Size @ Depth			@
Casing Schlumberger			
Bit Size			
Type Fluid In Hole			
Density	Viscosity		
Fluid Loss	PH		
Source Of Sample			
RM @ Measured Temperature			@
RMF @ Measured Temperature			@
RMC @ Measured Temperature			@
Source RMF	RMC		
RM @ MRT	RMF @ MRT		@
Maximum Recorded Temperatures			
Circulation Stopped	Time		
Logger On Bottom	Time		
Unit Number	Location		
Recorded By			
Witnessed By			

DISCLAIMER

THE USE OF AND RELIANCE UPON THIS RECORDED-DATA BY THE HEREIN NAMED COMPANY (AND ANY OF ITS AFFILIATES, PARTNERS, REPRESENTATIVES, AGENTS, CONSULTANTS AND EMPLOYEES) IS SUBJECT TO THE TERMS AND CONDITIONS AGREED UPON BETWEEN SCHLUMBERGER AND THE COMPANY, INCLUDING: (a) RESTRICTIONS ON USE OF THE RECORDED-DATA; (b) DISCLAIMERS AND WAIVERS OF WARRANTIES AND REPRESENTATIONS REGARDING COMPANY'S USE OF AND RELIANCE UPON THE RECORDED-DATA; AND (c) CUSTOMER'S FULL AND SOLE RESPONSIBILITY FOR ANY INFERENCE DRAWN OR DECISION MADE IN CONNECTION WITH THE USE OF THIS RECORDED-DATA.





OTHER SERVICES1 OS1: DITE/HLDS/APS/HNGS OS2: OS3: OS4: OS5:	OTHER SERVICES2 OS1: OS2: OS3: OS4: OS5:
--	---

REMARKS: RUN NUMBER 1 Hole cored with APC/XCB All depths in Meters Below Rig Floor (MBRF). Hole flushed with Sepiolite Sea Floor Driller- 2728.2 MBRF. Sea Floor Logger- 2727 MBRF. Total Depth Driller- 3073.84 MBRF. Total Depth Logger- 2900.5 MBRF. Casing Bottom Driller- 2810 MBRF. Casing Bottom Logger- 2814 MBRF. Could not get to TD due to hole problems.	REMARKS: RUN NUMBER 2
--	-----------------------

RUN 1			RUN 2		
SERVICE ORDER #:			SERVICE ORDER #:		
PROGRAM VERSION:		10C0-306	PROGRAM VERSION:		
FLUID LEVEL:			FLUID LEVEL:		
LOGGED INTERVAL	START	STOP	LOGGED INTERVAL	START	STOP

EQUIPMENT DESCRIPTION

RUN 1		RUN 2	
SURFACE EQUIPMENT			
GSR-U/Y			
DTM-B			

DOWNHOLE EQUIPMENT			
LEH-QT			31.27
LEH-QT			
DTC-H	CTEM		30.10
ECH-KC 9841	TelStatus		30.38
	ToolStatu		29.46
SGT-N	Gamma Ray		29.18
SGH-K 2450			29.46

SGC-TB 9585
SGD-TAA

AH-MCDU
AH-MCDU

27.79

DSST-B
SPAC-B 8128
ECH-SD 8127
SMDR-BD 8076
SMDX-AA 66

25.67

PWF 11.19

AH-MCDL
AH-MCDL

11.19

DTA-A
ECH-KE 8455
DTA-A 8261

8.90

MEST-B
MEAH-B 497
MEAC-A 875
MEPH-A 769
GPIC-A 719
MEPC-AB 877
MEDS-B 702

7.68

MEDR MEAC
MEPC MEDS-B
HV DF
Tension GPIT
TOOL ZERO

0.46

0.00

MAXIMUM STRING DIAMETER 4.50 IN
MEASUREMENTS RELATIVE TO TOOL ZERO
ALL LENGTHS IN METERS

Output DLIS Files

DEFAULT	FMS_DSI_039LUP	FN:26	PRODUCER	01-Apr-2003 22:28	2900.5 M	2802.0 M
FMS_CUST	FMS_DSI_039LUP	FN:27	PRODUCER	01-Apr-2003 22:28	2900.5 M	2802.0 M

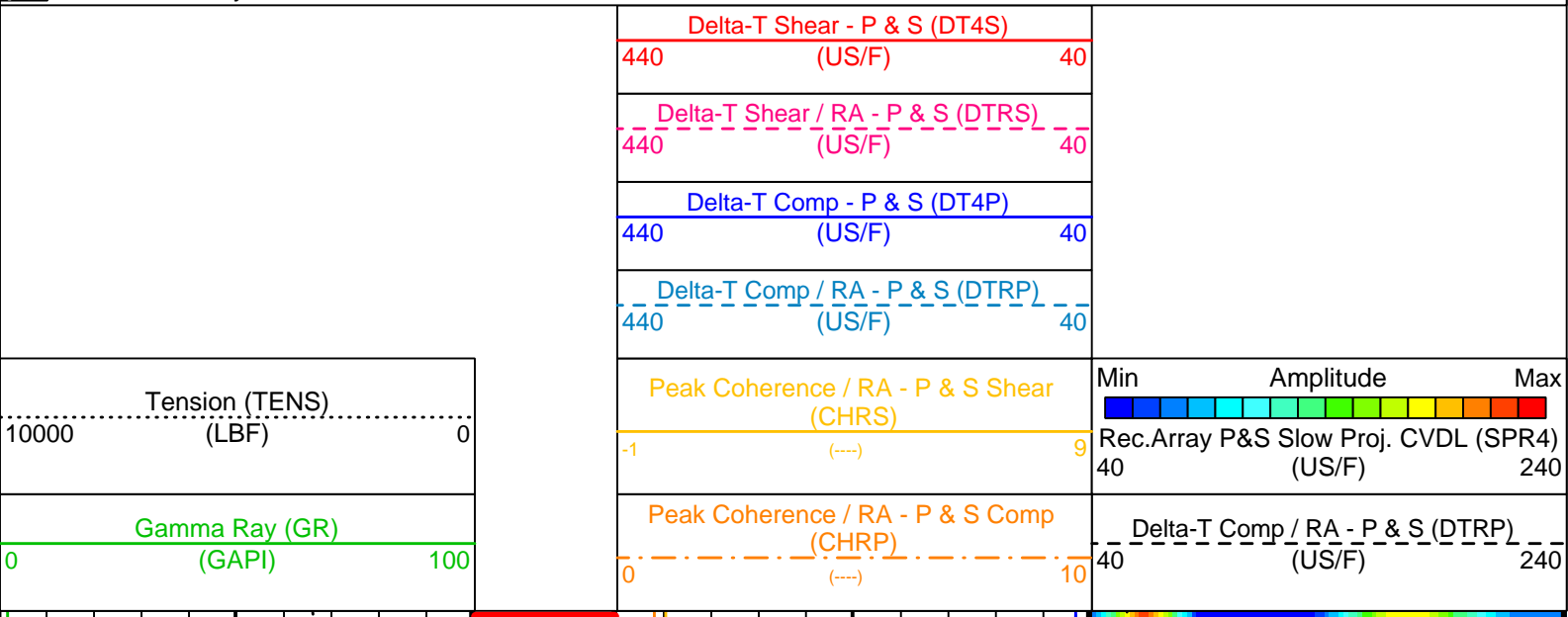
OP System Version: 10C0-306
MCM

MAIN UP LOG

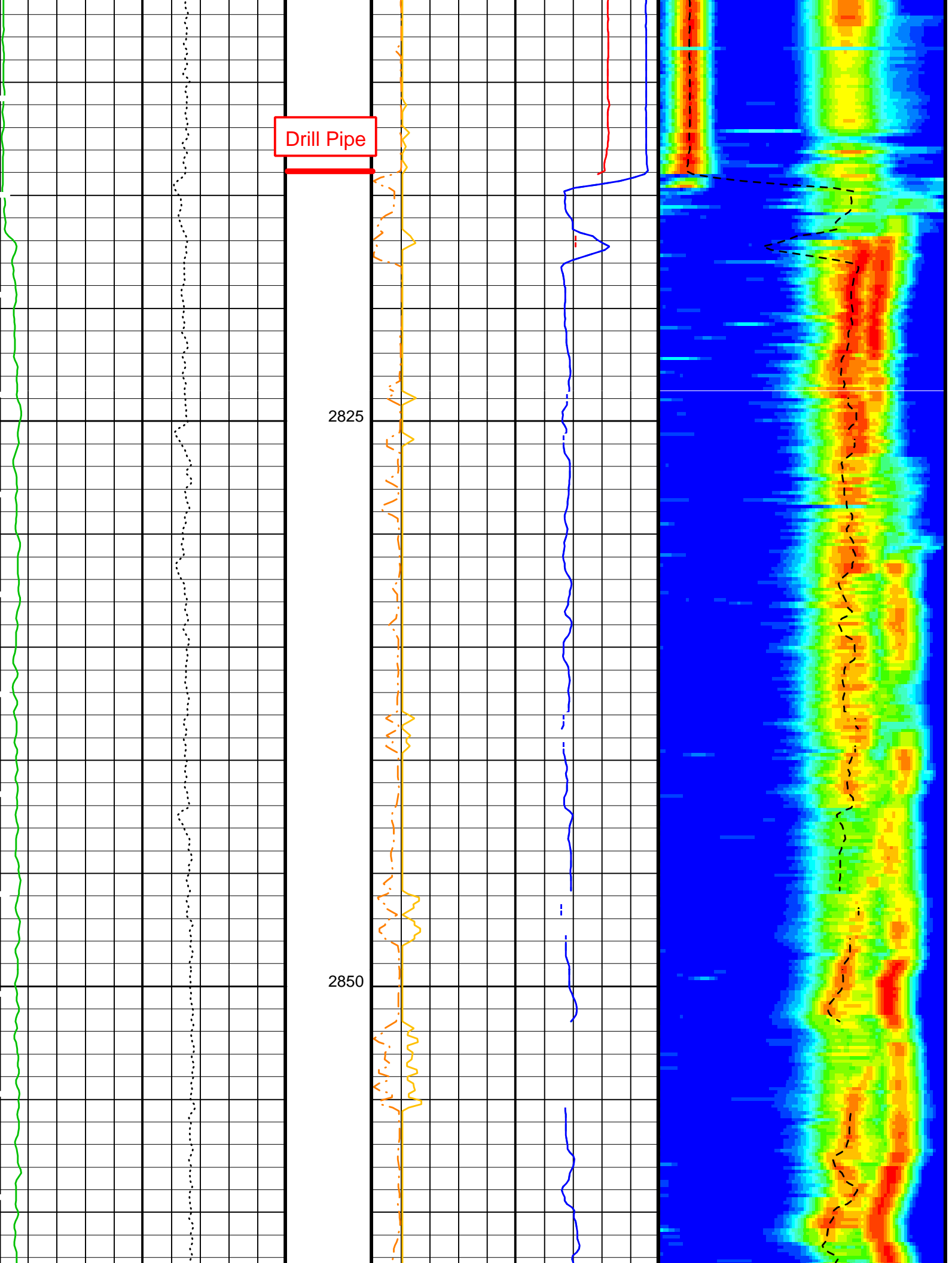
MEST-B	10C0-306	DTA-A	10C0-306
DSST-B	SPC-2277-NUCL_b	SGT-N	10C0-306
DTC-H	10C0-306		

PIP SUMMARY

Time Mark Every 60 S



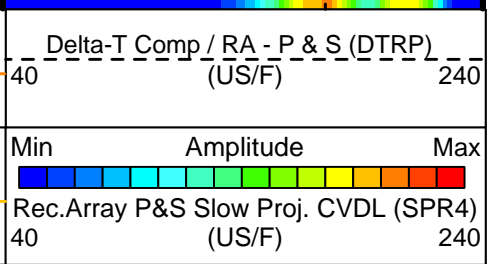
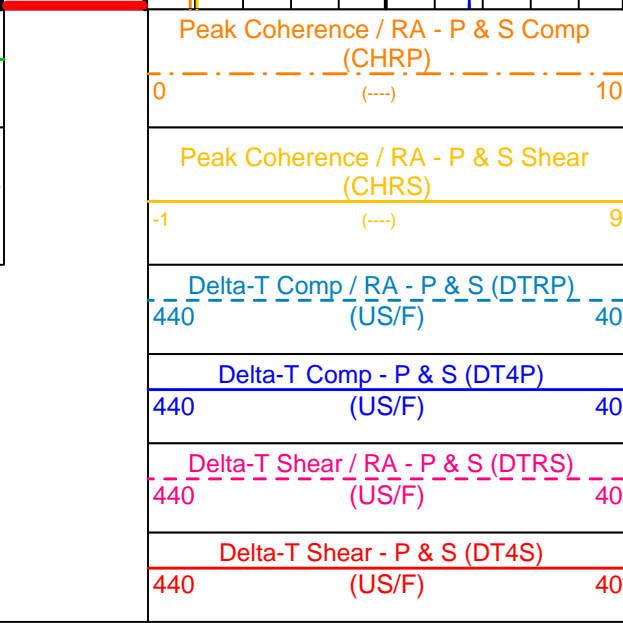
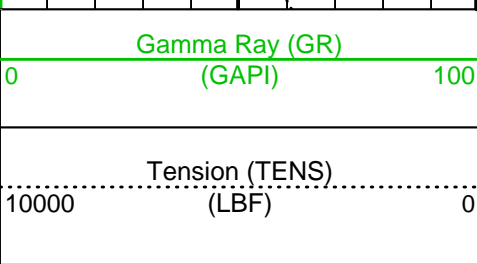
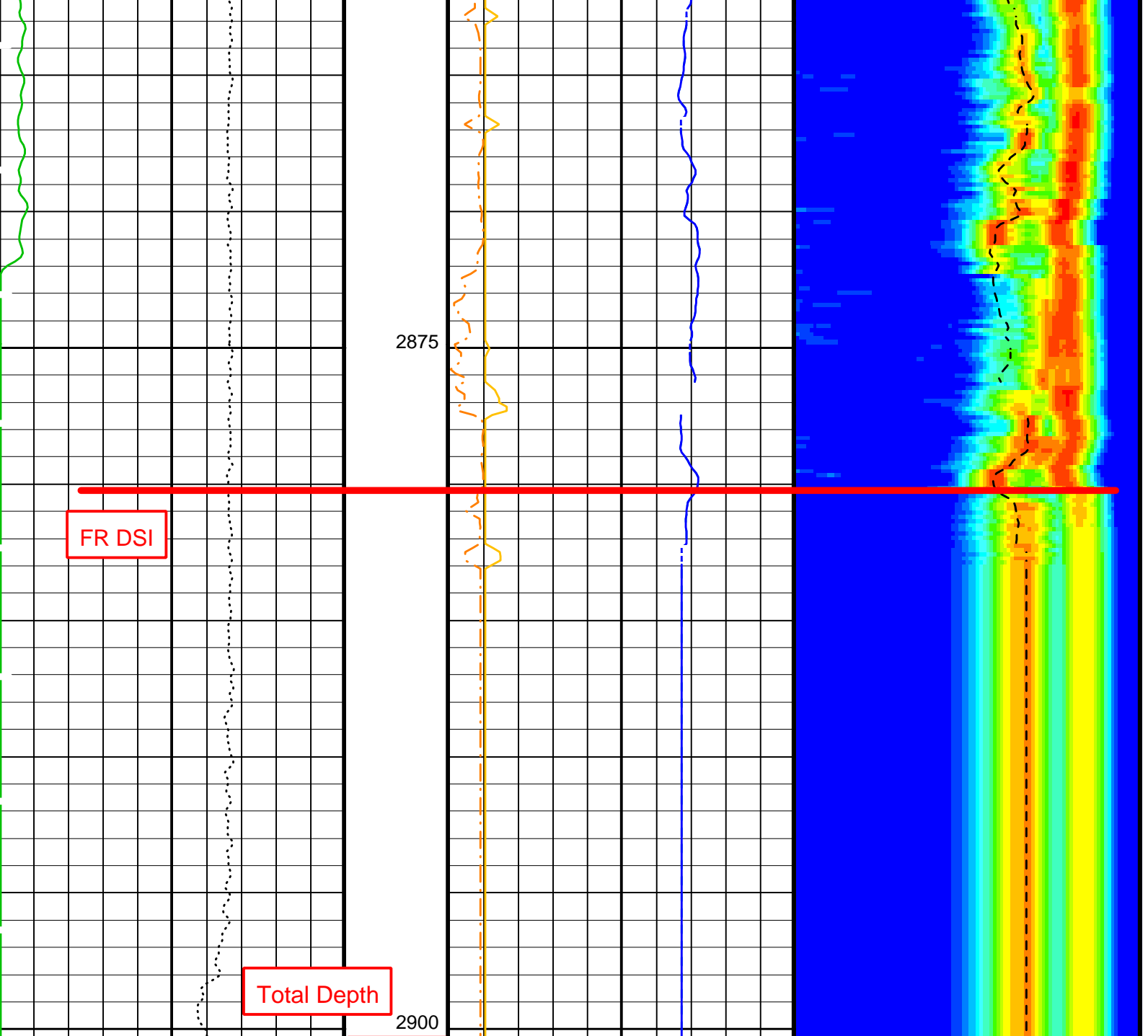
Last Reading



Drill Pipe

2825

2850



PIP SUMMARY

Parameters

DLIS Name	Description	Value	
	DSST-B: Dipole Shear Imager - B		
BHS	Borehole Status	OPEN	
CASF	Label Casing Function - Monopole P&S	50	
COLL	Label Slowness Lower Limit - Monopole P&S Compressional	40	US/F
COUL	Label Slowness Upper Limit - Monopole P&S Compressional	180	US/F
DDE4	Digitizing Delay 4	0	US
DDEX	Digitizing Delay X	0	US
DSI4	Digitizer Sample Interval 4	10	US
DSIX	Digitizer Sample Interval X	10	US
DTF	Delta-T Fluid	189	US/F
DWC4	Digitizer Word Count 4	512	
DWCX	Digitizer Word Count X	512	
FILG	Label Fill Gap Control - Monopole P&S	COMP_SHEAR	
LFC	Label Formation Character - Monopole P&S	COMP_FIRST	
MCS	Mean Casing Slowness	57	US/F
MTXG	Monopole Transmitter Geometry	186	IN
NWI4	Number Waveform Items 4	8	
RSMN	Label Shear/Compressional Minimum Ratio - Monopole P&S	1.4	
RSMX	Label Shear/Compressional Maximum Ratio - Monopole P&S	2.12	
RX1G	Receiver 1 Geometry	252	IN
RX2G	Receiver 2 Geometry	258	IN
RX3G	Receiver 3 Geometry	264	IN
RX4G	Receiver 4 Geometry	270	IN
RX5G	Receiver 5 Geometry	276	IN
RX6G	Receiver 6 Geometry	282	IN
RX7G	Receiver 7 Geometry	288	IN
RX8G	Receiver 8 Geometry	294	IN
SAM4	DSST Sonic Acquisition Mode 4 - High Frequency Monopole Mode for P&S	MFD_ODD	
SAMX	DSST Sonic Acquisition Mode X - Both Dipoles or Monopole Mode for Expert	OFF	
SAS4	STC Sonic Array Status - Monopole P&S	255	
SBO4	STC Search Band Offset - Monopole P&S	500	US
SBR4	STC Baseline Removal - Monopole P&S	ON	
SBW4	STC Search Bandwidth - Monopole P&S	2000	US
SFC4	STC Formation Character - Monopole P&S	SELECTABLE	
SFM4	STC Filter - Monopole P&S	B3-12K	
SHLL	Label Slowness Lower Limit - Monopole P&S Shear	75	US/F
SHUL	Label Slowness Upper Limit - Monopole P&S Shear	180	US/F
SLL4	STC Slowness Lower Limit - Monopole P&S	40	US/F
SST4	STC Slowness Step - Monopole P&S	2	US/F
SSW4	STC Source Waveform - Monopole P&S	WF_SAM4	
STLL	Label Slowness Lower Limit - Monopole Stoneley	180	US/F
STUL	Label Slowness Upper Limit - Monopole Stoneley	780	US/F
SUL4	STC Slowness Upper Limit - Monopole P&S	240	US/F
SWD4	STC Slowness Width - Monopole P&S	10	US/F
TBF4	STC Time for Baseline Fill - Monopole P&S	300	US
TLL4	STC Time Lower Limit - Monopole P&S	150	US
TST4	STC Time Step - Monopole P&S	50	US
TUL4	STC Time Upper Limit - Monopole P&S	2820	US
TWD4	STC Time Width - Monopole P&S	1000	US
TWI4	STC Integration Time Window - Monopole P&S	500	US
TWSX	Transmitter Waveform Select X	0	
	SGT-N: Scintillation Gamma-Ray - N		
BHS	Borehole Status	OPEN	
	HOLEV: Integrated Hole/Cement Volume		
BHS	Borehole Status	OPEN	

Format: DSST_P_S_VDL_COLOR Vertical Scale: 1:200 Graphics File Created: 01-Apr-2003 22:28

OP System Version: 10C0-306 MCM

MEST-B	10C0-306	DTA-A	10C0-306
DSST-B	SPC-2277-NUCL_b	SGT-N	10C0-306
DTC-H	10C0-306		

Output DLIS Files

DEFAULT	FMS_DSI_039LUP	FN:26	PRODUCER	01-Apr-2003 22:28
FMS_CUST	FMS_DSI_039LUP	FN:27	PRODUCER	01-Apr-2003 22:28

Well: ODP Leg 208, Site 1263A

Field: Walvis Ridge

Country: Africa

Ocean: Atlantic Ocean

Dipole Sonic/GR