

DISCLAIMER

THE USE OF AND RELIANCE UPON THIS RECORDED-DATA BY THE HEREIN NAMED COMPANY (AND ANY OF ITS AFFILIATES, PARTNERS, REPRESENTATIVES, AGENTS, CONSULTANTS AND EMPLOYEES) IS SUBJECT TO THE TERMS AND CONDITIONS AGREED UPON BETWEEN SCHLUMBERGER AND THE COMPANY, INCLUDING: (a) RESTRICTIONS ON USE OF THE RECORDED-DATA; (b) DISCLAIMERS AND WAIVERS OF WARRANTIES AND REPRESENTATIONS REGARDING COMPANY'S USE OF AND RELIANCE UPON THE RECORDED-DATA; AND (c) CUSTOMER'S FULL AND SOLE RESPONSIBILITY FOR ANY INFERENCE DRAWN OR DECISION MADE IN CONNECTION WITH THE USE OF THIS RECORDED-DATA.


OTHER SERVICES1 OS1: DITE/HLDS/APS/HNGS OS2: OS3: OS4: OS5:	OTHER SERVICES2 OS1: OS2: OS3: OS4: OS5:
--	---

REMARKS: RUN NUMBER 1 Hole cored with APC/XCB All depths in Meters Below Rig Floor (MBRF). Hole flushed with Sepiolite Sea Floor Driller- 2728.2 MBRF. Sea Floor Logger- 2727 MBRF. Total Depth Driller- 3073.84 MBRF. Total Depth Logger- 2900.5 MBRF. Casing Bottom Driller- 2810 MBRF. Casing Bottom Logger- 2814 MBRF. Could not get to TD due to hole problems.	REMARKS: RUN NUMBER 2
--	-----------------------

RUN 1			RUN 2		
SERVICE ORDER #: PROGRAM VERSION: 10C0-306 FLUID LEVEL:			SERVICE ORDER #: PROGRAM VERSION: FLUID LEVEL:		
LOGGED INTERVAL	START	STOP	LOGGED INTERVAL	START	STOP

EQUIPMENT DESCRIPTION

RUN 1		RUN 2	
SURFACE EQUIPMENT			
GSR-U/Y DTM-B			

DOWNHOLE EQUIPMENT			
LEH-QT		31.27	
LEH-QT			
DTC-H	CTEM	30.10	30.38
ECH-KC 9841	TelStatus ToolStatu	29.46	
SGT-N	Gamma Ray	29.18	29.46
SGH-K 2450			

SGC-TB 9585
SGD-TAA

AH-MCDU
AH-MCDU

27.79

DSST-B
SPAC-B 8128
ECH-SD 8127
SMDR-BD 8076
SMDX-AA 66

25.67

PWF 11.19

AH-MCDL
AH-MCDL

11.19

DTA-A
ECH-KE 8455
DTA-A 8261

8.90

MEST-B
MEAH-B 497
MEAC-A 875
MEPH-A 769
GPIC-A 719
MEPC-AB 877
MEDS-B 702

7.68

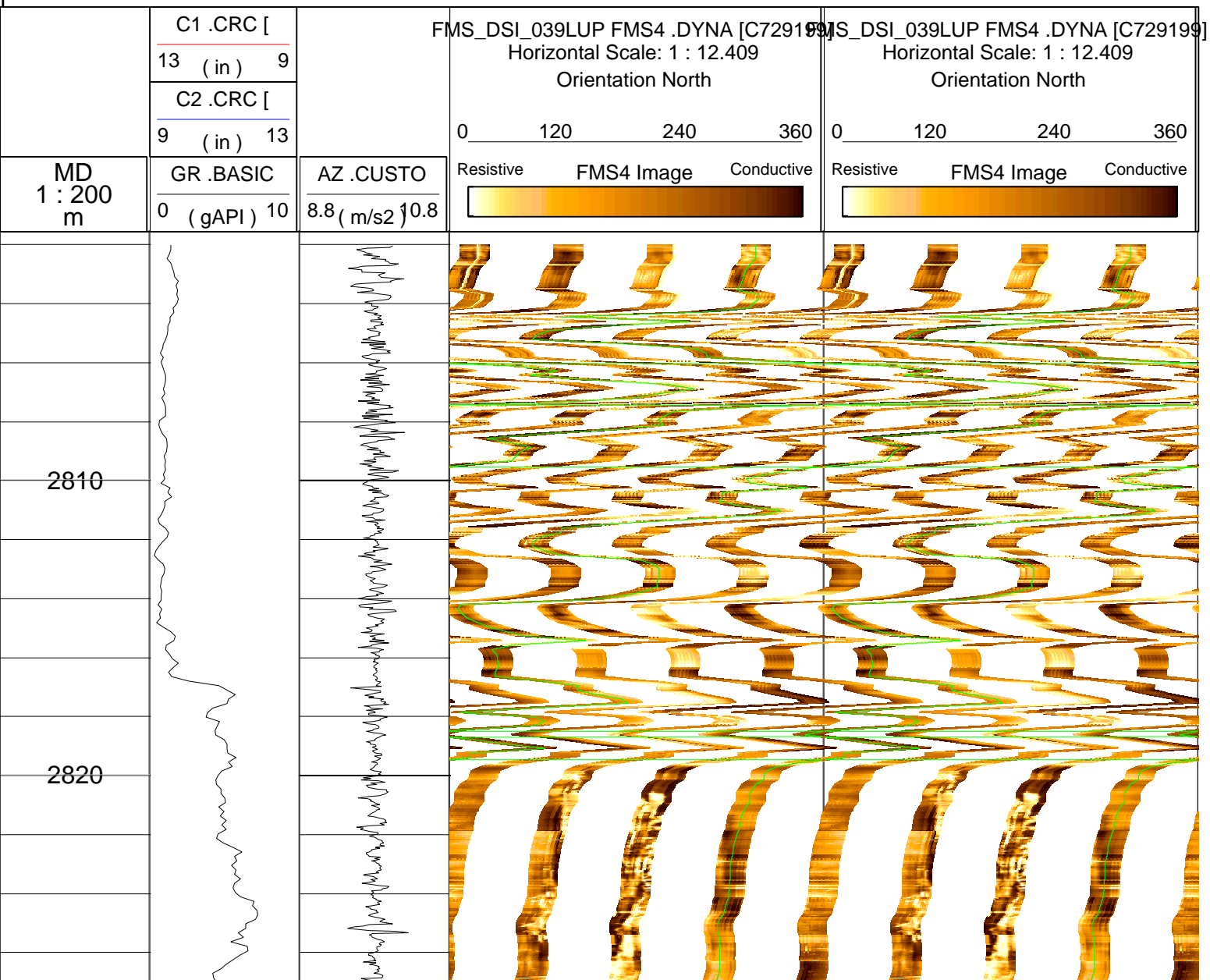
MEDR MEAC
MEPC MEDS-B
HV DF
Tension GPIT

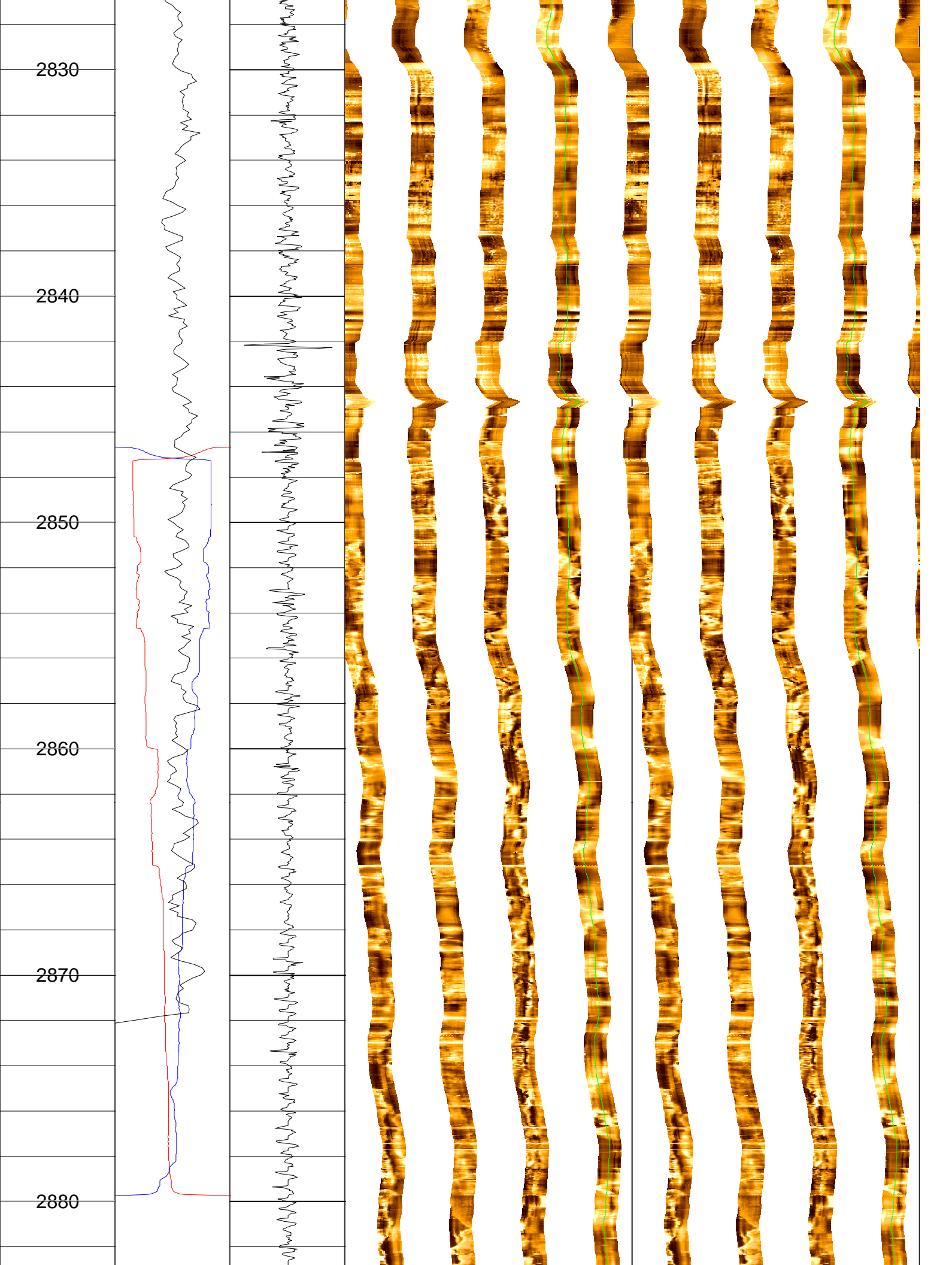
0.46

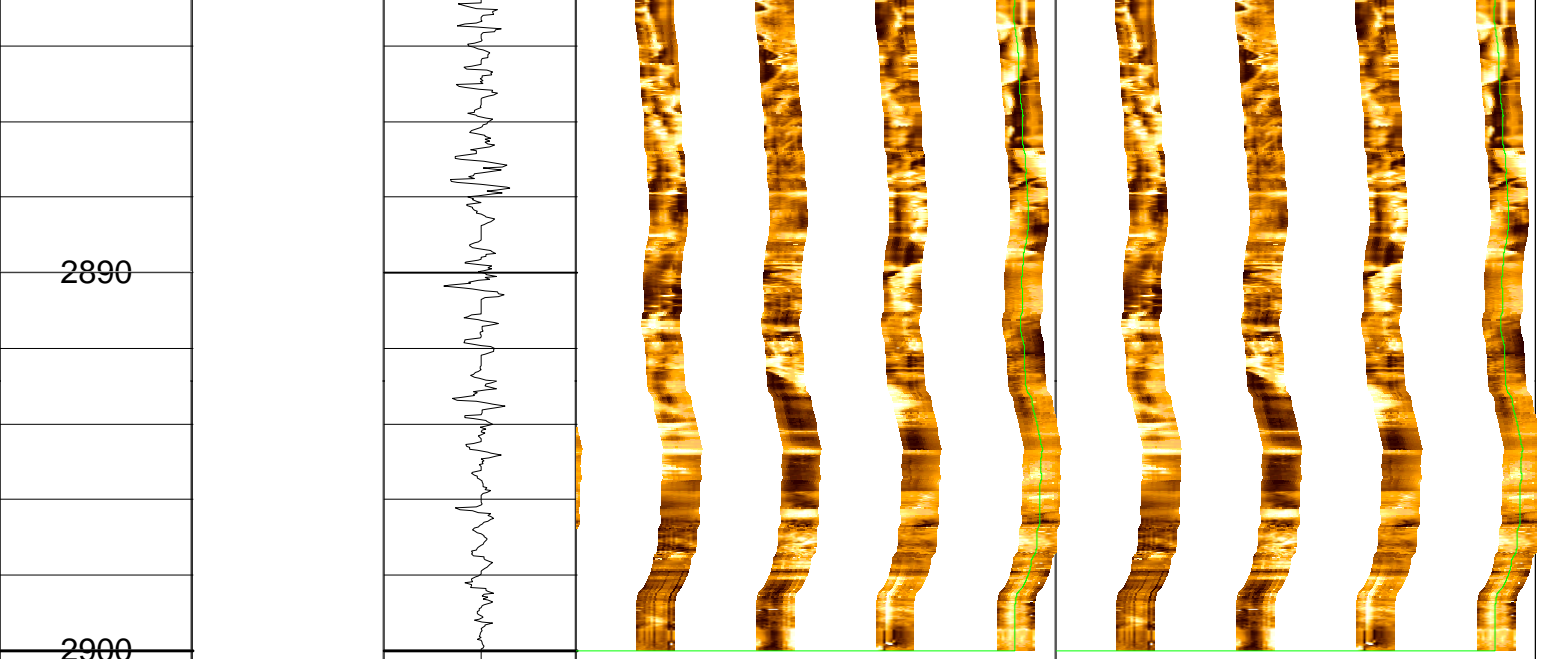
0.00

TOOL ZERO

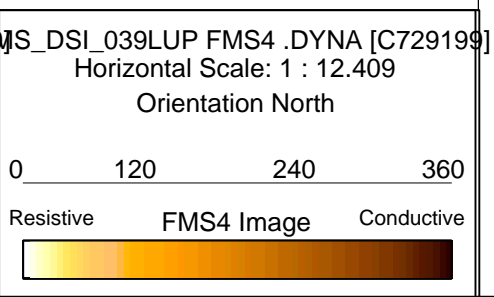
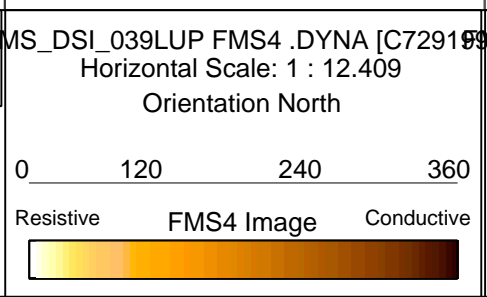
MAXIMUM STRING DIAMETER 4.50 IN
MEASUREMENTS RELATIVE TO TOOL ZERO
ALL LENGTHS IN METERS







MD 1 : 200 m	GR .BASIC 0 (gAPI) 10	AZ .CUSTO F 8.8 (m/s2) 10.8
	C2 .CRC [9 (in) 13	
	C1 .CRC [13 (in) 9	



Company: Lamont Doherty

Well: ODP Leg 208, Site 1263A

Field: Walvis Ridge

Country: Africa

Ocean: Atlantic Ocean

Schlumberger

Formation Micro-Scanner